

FROM FARM TO YOU™

Our Promise To You:
We Are Aromatherapy Experts

The GURUNANDA® brand was founded by Puneet Nanda, a successful entrepreneur turned yogi.



We Walk The Land

When he started his company and because of Nanda's passion for quality, he demanded that his aromatherapy products be the best in the world. Most products are sold in bulk, so you may never know where they come from. That didn't work for him, so he personally visited farms across the globe, tilled the soil, all to make sure he sources only the best quality.

Nanda is personally involved with the entire process of distillation and testing and its for this reason that we can ensure the purity and quality of each and every bottle that is delivered. That's why we call our products "From Farm to You". No compromises, only 100% pure and natural directly from the farm.



TROUBLESHOOTING

Symptom	Possible Cause	Solution
Unit not working/ No Mist or Mist has Diminished.	Power supply is not connected.	Plug in the power and press the button.
	Insufficient water.	Refill the water tank.
	Water exceeds the Max. water level line.	Dump the excess water.
	Ceramic disc may be dirty.	Clean ceramic disc and water tank.
	Top Cover is unsecured.	Secure the top cover.
	Air inlet is blocked or dirty.	Make sure air inlet is clear.
Main Unit is leaking water.	The atomization mouth is blocked.	Clean the mouth and keep it ventilated
	Top Cover is unsecured.	Secure the top cover.



www.GuruNanda.com

MAINTENANCE & WARNING

Maintenance

To ensure the diffuser works properly, we recommend cleaning the diffuser while changing oils, or every three days.

- Disconnect the diffuser unit from power before cleaning.
- Use a cloth to clean exterior part of the unit with water.
- Use a cotton swab or cloth to clean the water tank.
- Keep water from entering the vent.
- Do not use detergents, solvents or abrasive agents to clean the diffuser unit.
- Use the diffuser unit on a dry and even surface.

Warning

In case of abnormal situations such as smoke, peculiar smells or sounds, any further use may result in an accident such as fire or electric shock. You should unplug the adapter immediately.

- Never wrap the adapter with cloth or paper as it could disrupt the proper dissipation of heat, causing fire.
- Never attempt to disassemble or repair the product.
- Please keep the product out of the reach of children to avoid injury or electric shock.
- Corrosive oils such as Citronella or Cinnamon may cause damage to the unit if left in the reservoir.



GURUNANDA®

THE TOWER™ ULTRASONIC ESSENTIAL OIL DIFFUSER



EXPERIENCE NATURE AT HOME®

WHAT IS AROMATHERAPY?

Our modern lifestyles are often filled with stress. GURUNANDA® brings the serenity of aromatherapy directly into your home. The result is an aromatic paradise where you can reap the endless benefits by simply breathing in. Aromatherapy utilizes naturally extracted aromatic essences from flowers, trees or seeds.

GURUNANDA® aromatherapy uses silent, ultrasonic waves to diffuse water with your choice of essential oil or essential oil blend without generating heat so that the quality of the oil properties is neither damaged nor compromised.

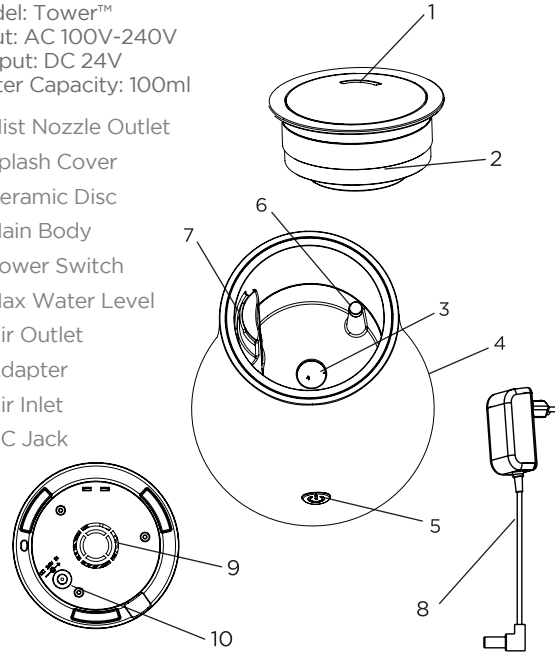
GURUNANDA® aromatherapy doesn't just fill your space with incredible fragrances; it awakens your senses and provides balance to your life. That balance creates the perfect environment to help our bodies heal and remain healthy. Allow GURUNANDA® aromatherapy to provide a unique experience that is restorative, gently clarifying and meditative.



SPECIFICATIONS

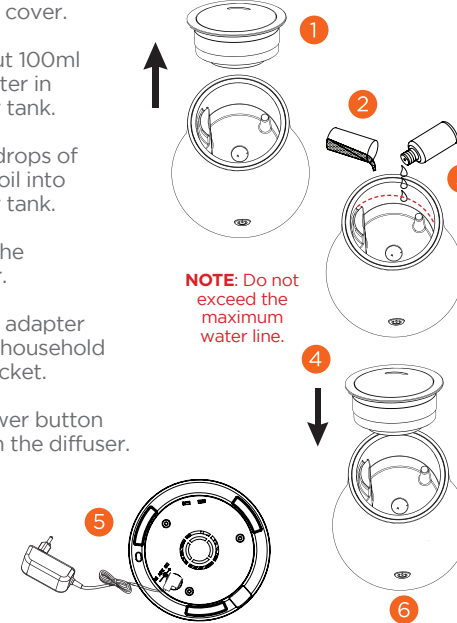
Model: Tower™
Input: AC 100V-240V
Output: DC 24V
Water Capacity: 100ml

1. Mist Nozzle Outlet
2. Splash Cover
3. Ceramic Disc
4. Main Body
5. Power Switch
6. Max Water Level
7. Air Outlet
8. Adapter
9. Air Inlet
10. DC Jack



OPERATION PROCEDURE

1. Open top cover.
2. Add about 100ml of tap water in the water tank.
3. Add 2-3 drops of essential oil into the water tank.
4. Replace the top cover.
5. Insert the adapter plug into household power socket.
6. Press power button to turn on the diffuser.



MODES OF OPERATIONS



Power Button, Mist/Light

1st Press: To turn on the unit and Red, Green, Blue alternating LED light. Mist-continuous mode.

2nd Press: To turn the light off. Mist remains continuous mode.

3rd Press: To change the mist in intermittent mode without light.

4th Press: To turn the unit off.



NOTE: Do not lean or move or attempt to empty or refill it during operation.

INSTRUCTION VIDEO

For a complete instruction video visit:
www.GuruNanda.com/howitworks

©2017 Distributed by GURUNANDA® • 560 W. Lambert Rd., Suite B, Brea, CA 92821
For more information on our products visit GuruNanda.com. Questions: 866-421-0309.