

# Windows Vista®/Windows® 7 Installation Guide

---

Before you can use the machine, you must set up the hardware and install the driver. Please read the 'Quick Setup Guide' and this 'Windows Vista®/Windows® 7 Installation Guide' for set up and installation instructions.

## STEP 1

### Setting Up the Machine

First, please follow STEP 1 Setting Up the Machine in the Quick Setup Guide. Then return to STEP 2 Installing the driver & software in this installation guide.



## STEP 2



### Installing the Driver & Software

Please follow the steps in this Windows Vista®/Windows® 7 Installation Guide for driver & software installation instructions.



## Setup is Complete!

Keep the 'Quick Setup Guide', 'Windows Vista®/Windows® 7 Installation Guide' and the supplied CD-ROM in a convenient place for quick and easy reference at all times.



## Before Starting

---

Before using this manual.....	2
Supplied CD-ROM for Windows Vista®/Windows® 7.....	2
Symbols used in this guide .....	2

## Installing the Driver & Software

---

For USB Interface Users .....	4
How to connect the machine to your computer.....	6
For Network Interface Users (MFC-7225N only) .....	8

## For Network Users

---

BRAdmin Light utility .....	11
Installing the BRAdmin Light configuration utility .....	11
Setting your IP address, Subnet Mask and Gateway using BRAdmin Light.....	12

## Other Information

---

ScanSoft™ PaperPort™ 11SE with OCR by NUANCE™ .....	13
Computer requirements .....	14
About Status Monitor for Windows® 7 users .....	14

## Before using this manual

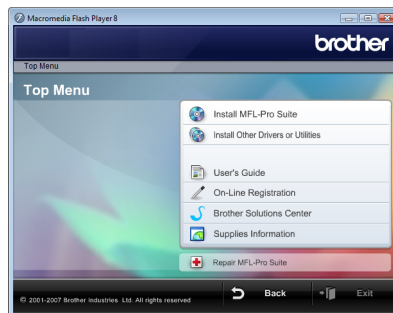
This manual is for Windows Vista®/Windows® 7 users only. This installation guide explains how to install the MFC-Pro Suite software and multifunction drivers for Windows Vista®/Windows® 7 and other information about Windows Vista®/Windows® 7. Before installing the driver and software, please follow the steps in the **Getting Started** section and **STEP 1 Setting Up the Machine** in the Quick Setup Guide. After you complete the initial setup, follow the steps in this guide for installing the MFL-Pro Suite and drivers. You can also find other information about the machine in the Quick Setup Guide.



See the Quick Setup Guide first.

## Supplied CD-ROM for Windows Vista®/Windows® 7

You can find the information listed below on the Windows Vista®/Windows® 7 CD-ROM. The menu may differ depending on your machine and operating systems.



### Install MFL-Pro Suite

You can install the MFL-Pro Suite software and multifunction drivers.



### Install Other Drivers or Utilities

You can install additional MFL-Pro Suite software utilities, install without ScanSoft™ PaperPort™ 11SE with OCR by NUANCE™, install the printer driver only.



### User's Guide

View the Software User's Guide and Network User's Guide (only available for models with built-in network). The Software User's Guide includes instructions for features available when connected to a computer. (eg. Printing and scanning details)



### On-Line Registration

Register your machine from the Brother Product Registration page.



### Brother Solutions Center

Access the Brother Solutions Center for FAQs, User's Guide, driver updates and tips for using your machine. (Internet access required)



### Supplies Information




Visit our web site for original/genuine Brother supplies at <http://www.brother.com/original/>



### Repair MFL-Pro Suite (USB only)


If an error occurred during the installation of the MFL-Pro Suite, use this selection to automatically repair and re-install the MFL-Pro Suite.


## Symbols used in this guide

 Improper Setup	 Note	 Quick Setup Guide
Improper Setup icons alert you to devices and operations that are not compatible with the machine.	Notes tell you how you should respond to a situation that may arise or give tips about how the current operation works with other features.	Indicates reference to the Quick Setup Guide.

Follow the instructions on this page for the interface you are going to use.  
For the latest drivers, documentation, and to find the best solution for your problem, access the Brother Solutions Center directly from the CD-ROM / Driver or visit <http://solutions.brother.com/>.

## Windows®

	<b>For USB Interface Users</b> ..... 4
	■ How to connect the machine to your computer.....6

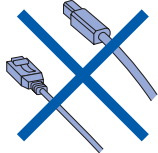
	<b>For Network Interface Users (MFC-7225N only)</b> ..... 8
---	---

For USB Interface Users

Windows®  
USB

**Improper Setup**

**DO NOT** connect the interface cable. Connecting the interface cable is done when installing the driver.



**Important**

Make sure that you have finished the instructions from **STEP 1 Setting Up the Machine** in the Quick Setup Guide.

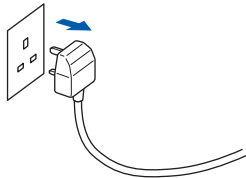


**Note**

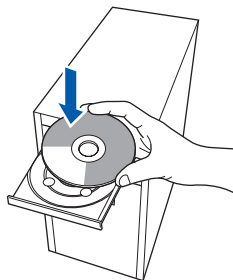
Please close any applications running before installing MFL-Pro Suite.

**Installing the driver and connecting the machine to your computer**

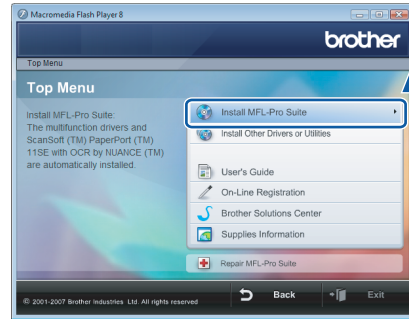
- 1 Disconnect the machine from the power socket and from your computer, if you already connected an interface cable.



- 2 Turn on your computer. (You must be logged on with Administrator rights.)
- 3 Put the supplied CD-ROM for Windows Vista®/ Windows® 7 into your CD-ROM drive. If the model name screen appears, choose your machine. If the language screen appears, choose your language.



- 4 The CD-ROM main menu will appear. Click **Install MFL-Pro Suite**.

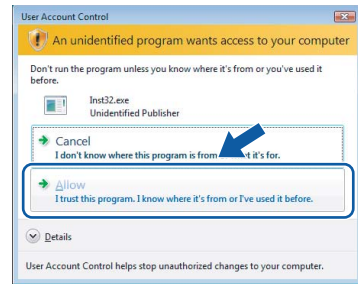


If this window does not appear, use Windows® Explorer to run the **start.exe** program from the root folder of the Brother CD-ROM.

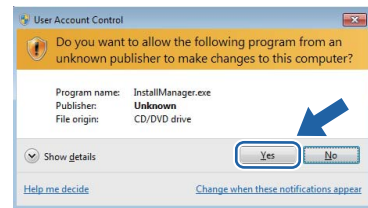


**Note**

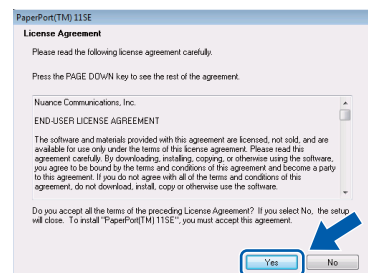
For Windows Vista® users:  
If the **User Account Control** screen appears, click **Allow**.



For Windows® 7 users:  
If the **User Account Control** screen appears, click **Yes**.

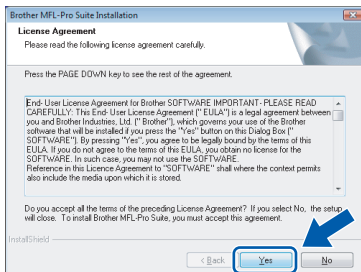


- 5 After reading and accepting the ScanSoft™ PaperPort™ 11SE License Agreement, click **Yes**.

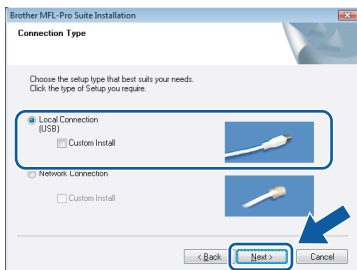


**6** The installation of ScanSoft™ PaperPort™ 11SE will automatically start and is followed by the installation of MFL-Pro Suite.

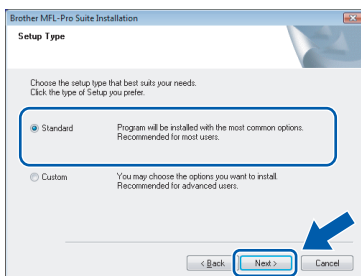
**7** When the Brother MFL-Pro Suite Software License Agreement window appears, click **Yes** if you agree to the Software License Agreement.



**8** If this screen appears, choose **Local Connection**, and then click **Next**. The installation continues.

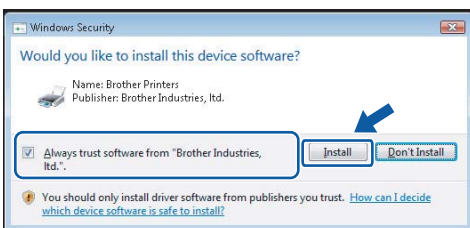


If this screen appears, choose **Standard**, and then click **Next**. The installation continues.

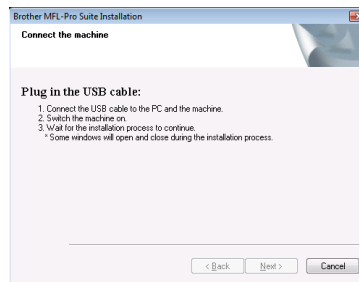


**Note**

If this screen appears, click the check box and click **Install** to complete the installation properly.



**9** When this screen appears, go to the next step.



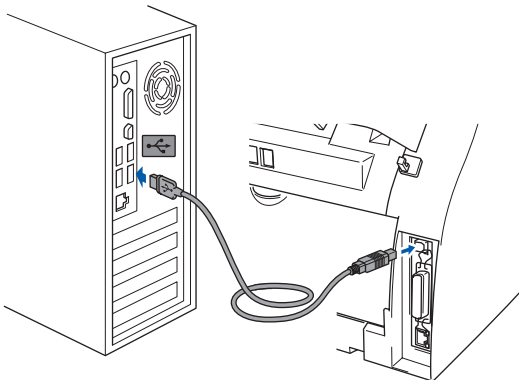
**10** Go to the “How to connect the machine to your computer” steps for your model.

Model Number	Page Number
MFC-7220, MFC-7225N	page 6
MFC-3360C	page 7

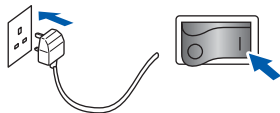
## How to connect the machine to your computer

**For MFC-7220 and MFC-7225N users  
(The illustrations are based on MFC-7225N.)**

- 1 Connect the USB interface cable to your PC, and then connect it to the machine.



- 2 Plug in the power cord and turn on the machine.

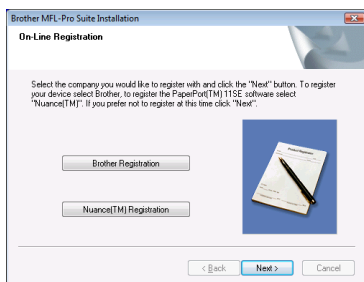


The installation of the Brother drivers will automatically start. **The installation screens appear one after another, please wait for a while.**

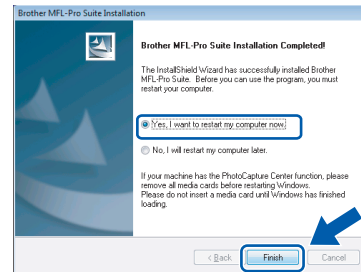
### ⊘ Improper Setup

**DO NOT try to cancel any of the screens during this installation.**

- 3 When the **On-Line Registration** screen is displayed, make your selection and follow the on-screen instructions. Once you have completed the registration process, close your web browser to return to this window. Then click **Next**.



- 4 Click **Finish** to restart your computer. After restarting the computer, you must be logged on with Administrator rights.




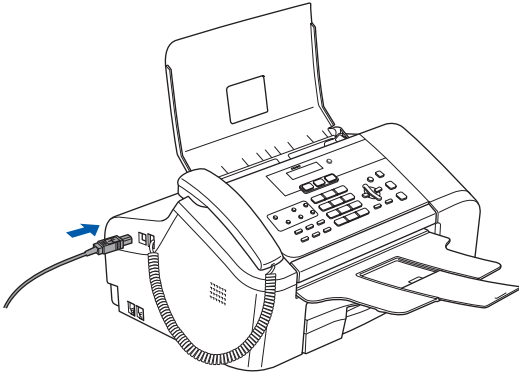
**OK!** The MFL-Pro Suite has been installed completely.

### 📝 Note

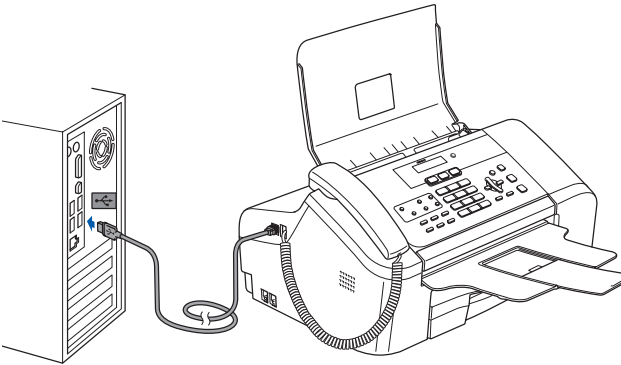
*MFL-Pro Suite includes the Printer Driver, Scanner Driver, Brother ControlCenter3, ScanSoft™ PaperPort™ 11SE. ScanSoft™ PaperPort™ 11SE is a document management application for scanning and viewing documents.*

## For MFC-3360C users

- 1 Connect the USB cable to the USB socket marked with a  symbol. You will find the USB socket next to the handset cord socket as shown below.



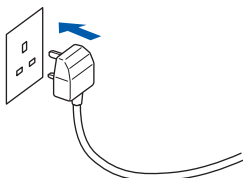
- 2 Connect the USB cable to your computer.



### Improper Setup

- **DO NOT** connect the machine to a USB port on a keyboard or a non-powered USB hub. Brother recommends that you connect the machine directly to your computer.
- Make sure that the cable does not restrict the cover from closing, or an error may occur.
- Make sure you use a USB 2.0 cable that is no longer than 2 metres.

- 3 Turn on the machine by connecting the power cord.

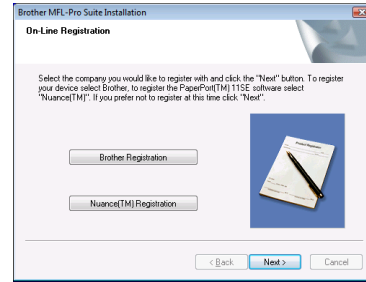


The installation of the Brother drivers will automatically start. **The installation screens appear one after another, please wait for a while.**

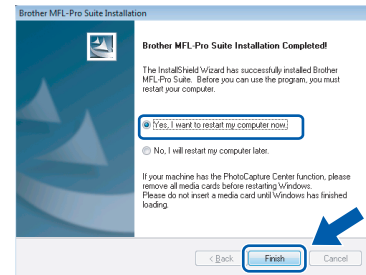
### Improper Setup

**DO NOT** try to cancel any of the screens during this installation.

- 4 When the **On-Line Registration** screen is displayed, make your selection and follow the on-screen instructions. Once you have completed the registration process, close your web browser to return to this window. Then click **Next**.



- 5 Click **Finish** to restart your computer. After restarting the computer, you must be logged on with Administrator rights.



 **The MFL-Pro Suite has been installed completely.**

### Note

*MFL-Pro Suite includes the Printer Driver, Scanner Driver, Brother ControlCenter3, ScanSoft™ PaperPort™ 11SE. ScanSoft™ PaperPort™ 11SE is a document management application for scanning and viewing documents.*



## For Network Interface Users (MFC-7225N only)

### Important

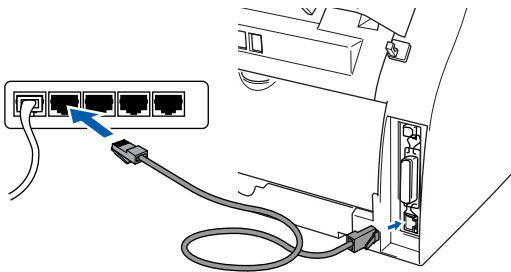
Make sure that you have finished the instructions from *STEP 1 Setting Up the Machine* in the Quick Setup Guide.



#### Note

Please close any applications running before installing MFL-Pro Suite.

- 1 Switch off and disconnect the machine from the power socket.
- 2 Connect the network interface cable to the machine, and then connect it to your network.



- 3 Plug the AC power cord into an AC outlet. Turn the power switch on.



- 4 Turn on your computer. (You must be logged on with Administrator rights.) Close any applications running before installing the MFL-Pro Suite.

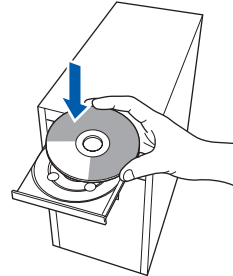


#### Note

Before installation, if you are using personal firewall software, disable it. After the installation, restart your personal firewall software.

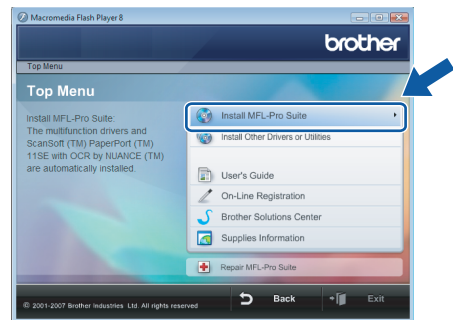
### 5

Put the supplied CD-ROM into your CD-ROM drive. If the model name screen appears, choose your machine. If the language screen appears, choose your language.



### 6

The CD-ROM main menu will appear. Click **Install MFL-Pro Suite**.



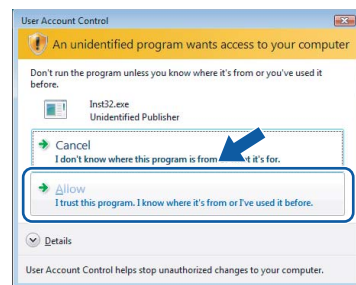
If this window does not appear, use Windows® Explorer to run the **start.exe** program from the root folder of the Brother CD-ROM.



#### Note

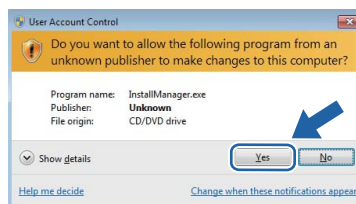
For Windows Vista® users:

When the **User Account Control** screen appears, click **Allow**.

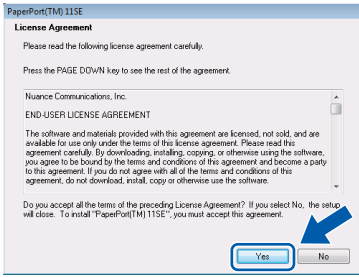


For Windows® 7 users:

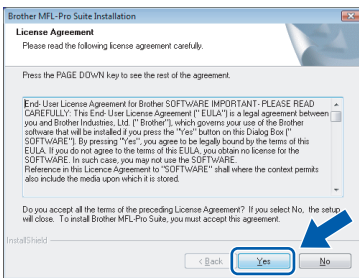
If the **User Account Control** screen appears, click **Yes**.



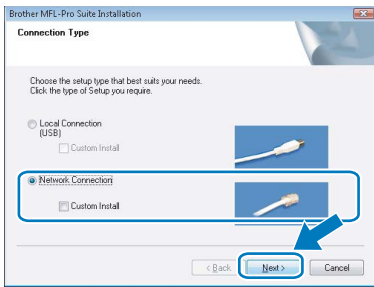
**7** After reading and accepting the ScanSoft™ PaperPort™ 11SE License Agreement, click **Yes**.



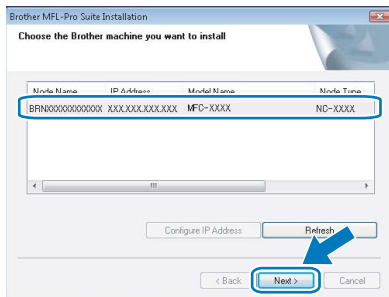
**8** When the Brother MFL-Pro Suite Software License Agreement window appears, click **Yes** if you agree to the Software License Agreement.



**9** Choose **Network Connection**, and then click **Next**.



**10** If the machine is configured for your network, choose the machine from the list, and then click **Next**. This window will not appear if there is only one machine connected on the network, it will be chosen automatically.



If your machine shows **APIPA** in the **IP Address** field, click **Configure IP Address** and enter an IP address for your machine that is suitable for your network.

**Note**

If the machine is not yet configured for use on your network, the following screen appears.



Click **OK**. The **Configure IP Address** window will appear. Enter an IP address for your machine that is suitable for your network by following the on-screen instructions.

**11** The installation of the Brother drivers will automatically start. The installation screens appear one after another. **Please wait, it will take a few seconds for all the screens to appear.**

**Improper Setup**

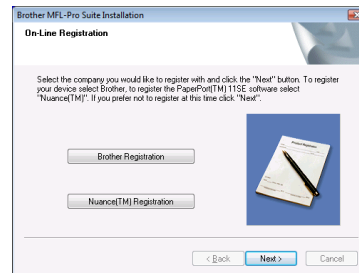
**DO NOT try to cancel any of the screens during this installation.**

**Note**

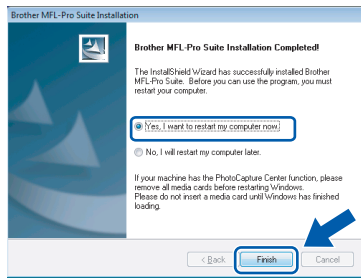
When this screen appears, click the check box and click **Install** to complete the installation properly.



**12** When the Brother and ScanSoft **On-Line Registration** screen is displayed, make your selection and follow the on-screen instructions. Once you have completed the registration process, close your web browser to return to this window. Then click **Next**.



- 13** Click **Finish** to restart your computer.  
After restarting the computer, you must be logged on with Administrator rights.



**The MFL-Pro Suite has been installed completely.**



#### Note

*MFL-Pro Suite includes the Printer Driver, Scanner Driver, Brother ControlCenter3, ScanSoft™ PaperPort™ 11SE. ScanSoft™ PaperPort™ 11SE is a document management application for scanning and viewing documents.*

## BRAdmin Light utility

BRAdmin Light is a utility for initial setup of Brother network connected devices. It can also search for Brother products on your network, view the status and configure basic network settings, such as IP address. For more information on BRAdmin Light, visit us at <http://solutions.brother.com/>.

### Note

If you require more advanced printer management, use the latest Brother BRAdmin Professional utility version that is available as a download from <http://solutions.brother.com/>.

## Installing the BRAdmin Light configuration utility

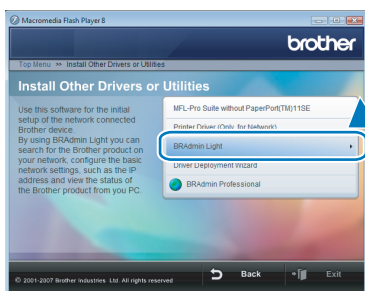
### Note

The default password for the print server is 'access'. You can use BRAdmin Light to change this password.

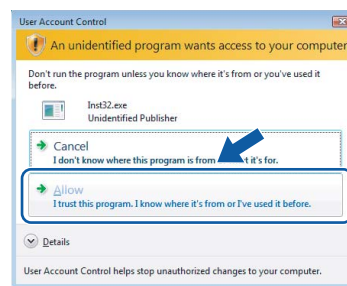
- 1 Click **Install Other Drivers or Utilities** on the menu screen.



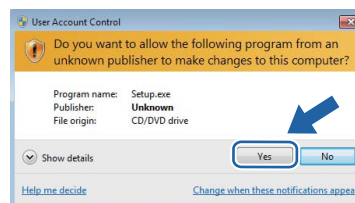
- 2 Click **BRAdmin Light** and follow the on-screen instructions.



- 3 For Windows Vista® users:  
When the **User Account Control** screen appears, click **Allow**.



- For Windows® 7 users:  
When the **User Account Control** screen appears, click **Yes**.

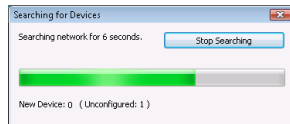


## Setting your IP address, Subnet Mask and Gateway using BRAdmin Light

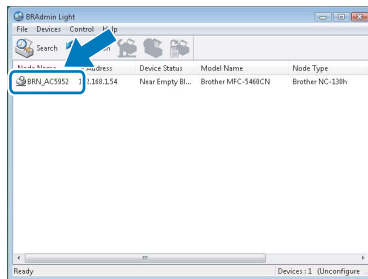
### Note

If you have a DHCP/BOOTP/RARP server in your network, you don't have to do the following operation. The machine will automatically obtain its own IP address.

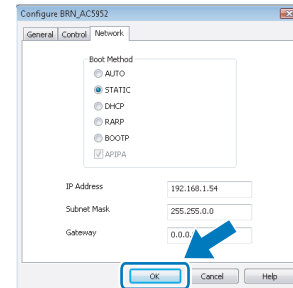
- 1 Start BRAdmin Light. It will search for new devices automatically.



- 2 Double-click the unconfigured device.



- 3 Choose **STATIC** for the **Boot Method**. Enter the **IP Address**, **Subnet Mask** and **Gateway**, and then click **OK**.

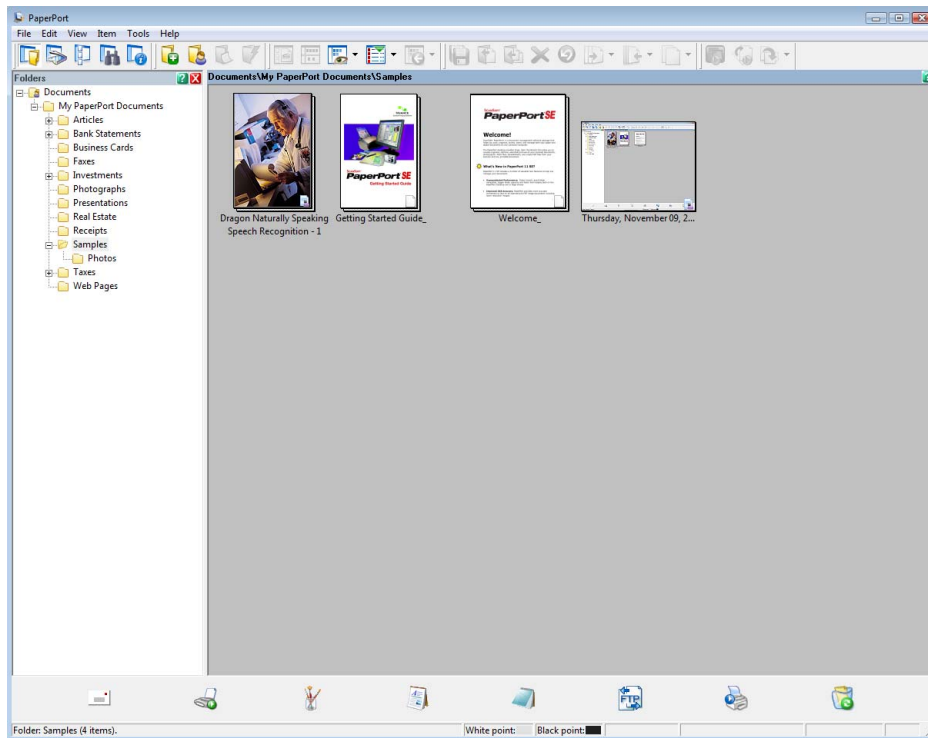


- 4 The address information will be saved to the machine.

## ScanSoft™ PaperPort™ 11SE with OCR by NUANCE™

ScanSoft™ PaperPort™ 11SE for Brother is a document management application. You can use PaperPort™ 11SE to view scanned documents.

PaperPort™ 11SE has a sophisticated, yet easy-to-use filing system that will help you organize your graphics and text documents. It allows you to mix or 'stack' documents of different formats for printing, faxing or filing.



To view the complete **ScanSoft™ PaperPort™ 11SE User's Guide**, choose **Help** from **PaperPort™ 11SE** menu bar and click **Getting Started Guide**.

When you install MFL-Pro Suite, ScanSoft™ PaperPort™ 11SE for Brother is installed automatically.

You can access ScanSoft™ PaperPort™ 11SE through the **ScanSoft™ PaperPort™ 11SE** program group located in **Start/All Programs/ScanSoft PaperPort 11SE** on your PC.

## Computer requirements

Minimum System Requirements and Supported PC Software Functions						
Operating Systems <sup>1</sup>	Supported Functions	Minimum Processor	Minimum RAM	Recommended RAM	Required Hard Disk Space	
					For Drivers	For Applications
Windows Vista <sup>®</sup>	Printing, Scanning, PC-FAX <sup>2</sup>	Intel <sup>®</sup> Pentium <sup>®</sup> 4 or equivalent 64-bit (Intel <sup>®</sup> 64 or AMD64) supported CPU	512 MB	1 GB	500 MB	500 MB
Windows <sup>®</sup> 7	Printing, Scanning, PC-FAX <sup>2</sup>	Intel <sup>®</sup> Pentium <sup>®</sup> 4 or equivalent 64-bit (Intel <sup>®</sup> 64 or AMD64) supported CPU	1 GB (32-bit) 2 GB (64-bit)	1 GB (32-bit) 2 GB (64-bit)	650 MB	530 MB


<sup>1</sup> Microsoft<sup>®</sup> Internet Explorer<sup>®</sup> 5.5 or greater.  
<sup>2</sup> PC FAX supports black and white faxing only.


For the latest driver updates, visit us at <http://solutions.brother.com/>.  
 All trademarks, brand and product names are property of their respective companies.

## About Status Monitor for Windows<sup>®</sup> 7 users

### Status Monitor display

If the **Status Monitor** is ON you may find the  button on the taskbar.

To show the **Status Monitor** icon on your taskbar, click the  button.

The **Status Monitor** icon will appear in the small window. Then drag the  icon to the taskbar.



### **Trademarks**

The Brother logo is a registered trademark of Brother Industries, Ltd.

Microsoft and Windows are registered trademarks of Microsoft Corporation in the United States and/or other countries.

Windows Vista is either a registered trademark or trademark of Microsoft Corporation in the United States and/or other countries.

Nuance, the Nuance logo, PaperPort and ScanSoft are trademarks or registered trademarks of Nuance Communications, Inc. or its affiliates in the United States and/or other countries.

Each company whose software title is mentioned in this manual has a Software License Agreement specific to its proprietary programs.

All other trademarks are the property of their respective owners.

### **Compilation and Publication**

This manual has been compiled and published, under the supervision of Brother Industries Ltd., covering the latest product descriptions and specifications.

The contents of this manual and the specifications of this product are subject to change without notice.

Brother reserves the right to make changes without notice in the specifications and materials contained herein and shall not be responsible for any damages (including consequential) caused by reliance on the materials presented, including but not limited to typographical and other errors relating to the publication.

This product is designed for use in a professional environment.

### **Copyright and License**

© 2009 Brother Industries, Ltd. © 1998-2007 TROY Group, Inc. © 1983-1998 PACIFIC SOFTWARES INC. This product includes the "KASAGO TCP/IP" software developed by ELMIC WESCOM, Inc. © 2007 Devicescape Software, Inc. ALL RIGHTS RESERVED.



**brother**®