





Brinno Command Center Instructions

Please note that this is the beta version of the Brinno Command Center and you are getting early access to our testing site. Some functions are still under development and if you run into any issues or have feedback please send us an email at customerservice@brinno.com

Official Site <https://www.brinno.com>



Contents

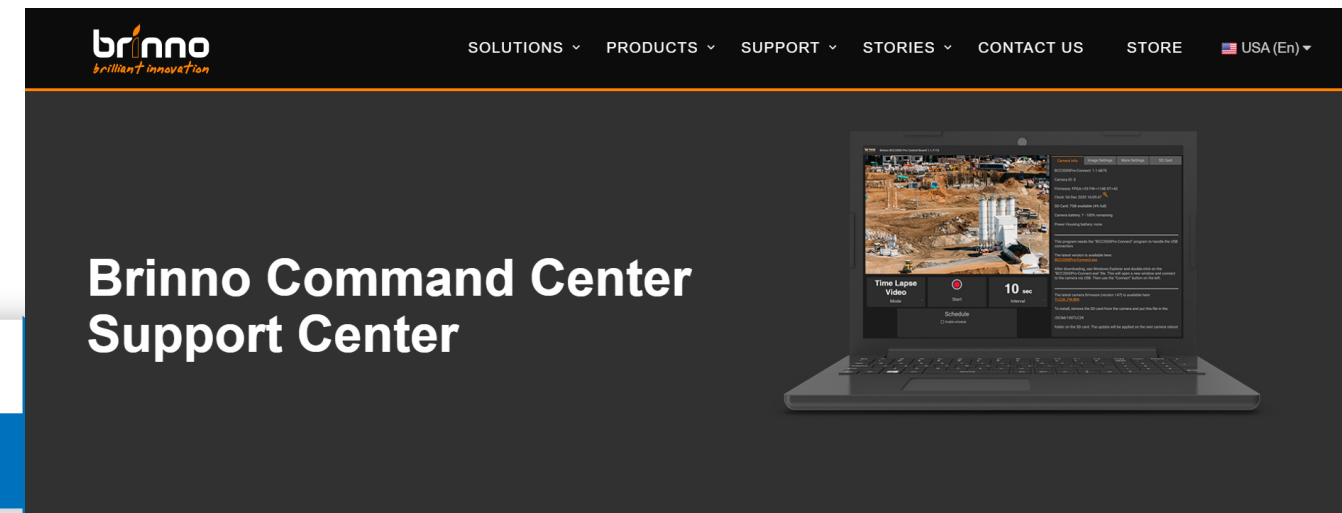
-  **Upgrade Camera Firmware**
-  **Download Software to Computer**
-  **Brinno Command Center**
-  **Appendix & Support**

Upgrade Camera Firmware

1 Using a Windows computer go to :

Brinno Command Center

<https://www.brinno.com/support/support-center/Command-Center>



1.2 Go to TLC2000/TLC2020 support page to download firmware in your desired language. Follow the PDF instructions or video tutorial to complete firmware upgrade.

Firmware Upgrade Procedure

Procedure can be found here :

Video Tutorial



PDF Instructions



Download Steps

Please make sure you follow the steps and don't miss anything

STEP 1 - Follow Manual Instructions

IMPORTANT :

Follow the instructions in the Command Center Manual before downloading or using the program.

download



STEP 2 - Upgrade Firmware

IMPORTANT :

- I. Go to the TLC2000/TLC2020 support page and download firmware in your desired language.
- II. Must download firmware with Windows only (not compatible with macOS).
- III. Follow the PDF instructions or video tutorial to complete firmware upgrade.

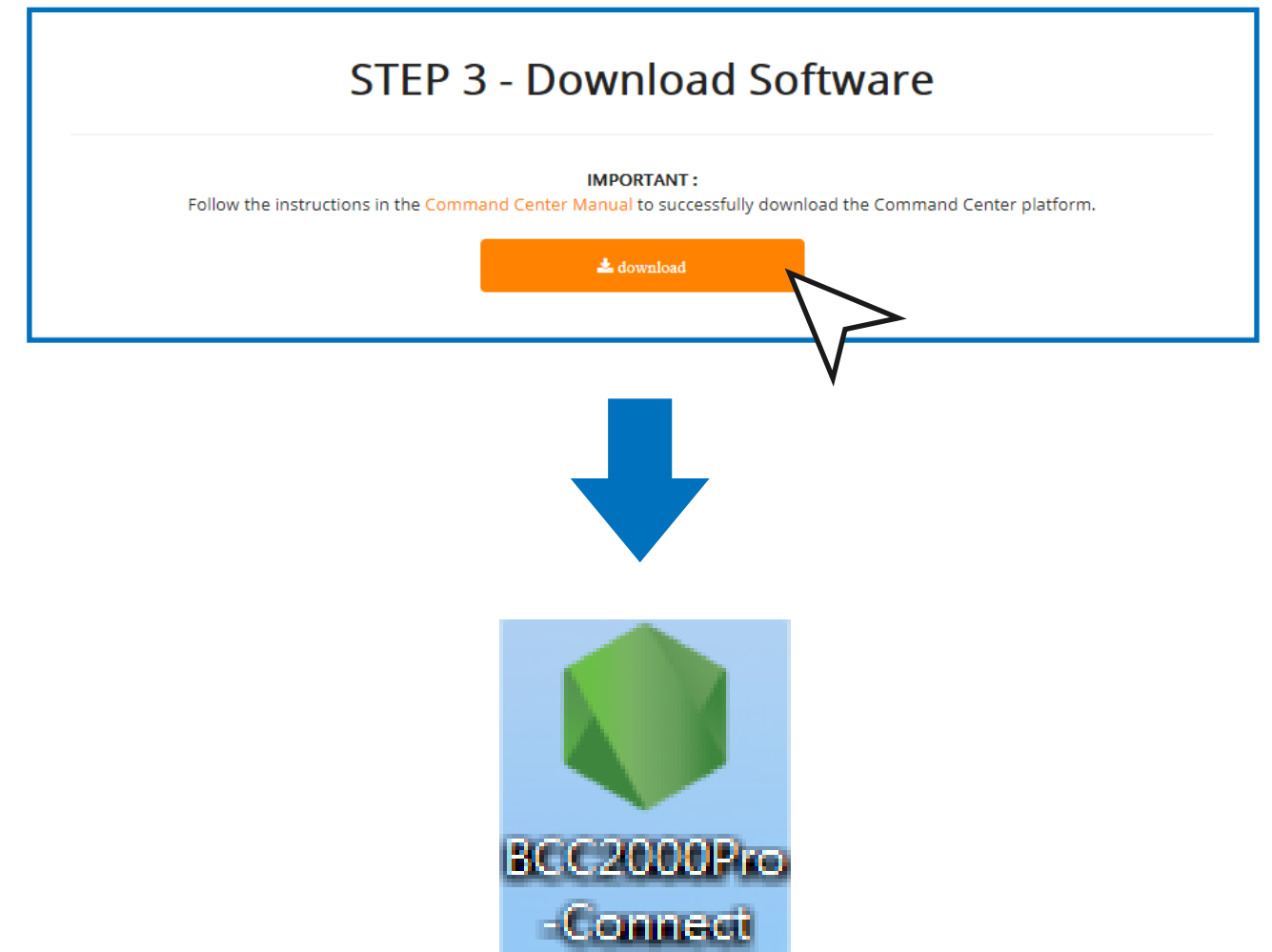
go to support page



Download Software to Computer

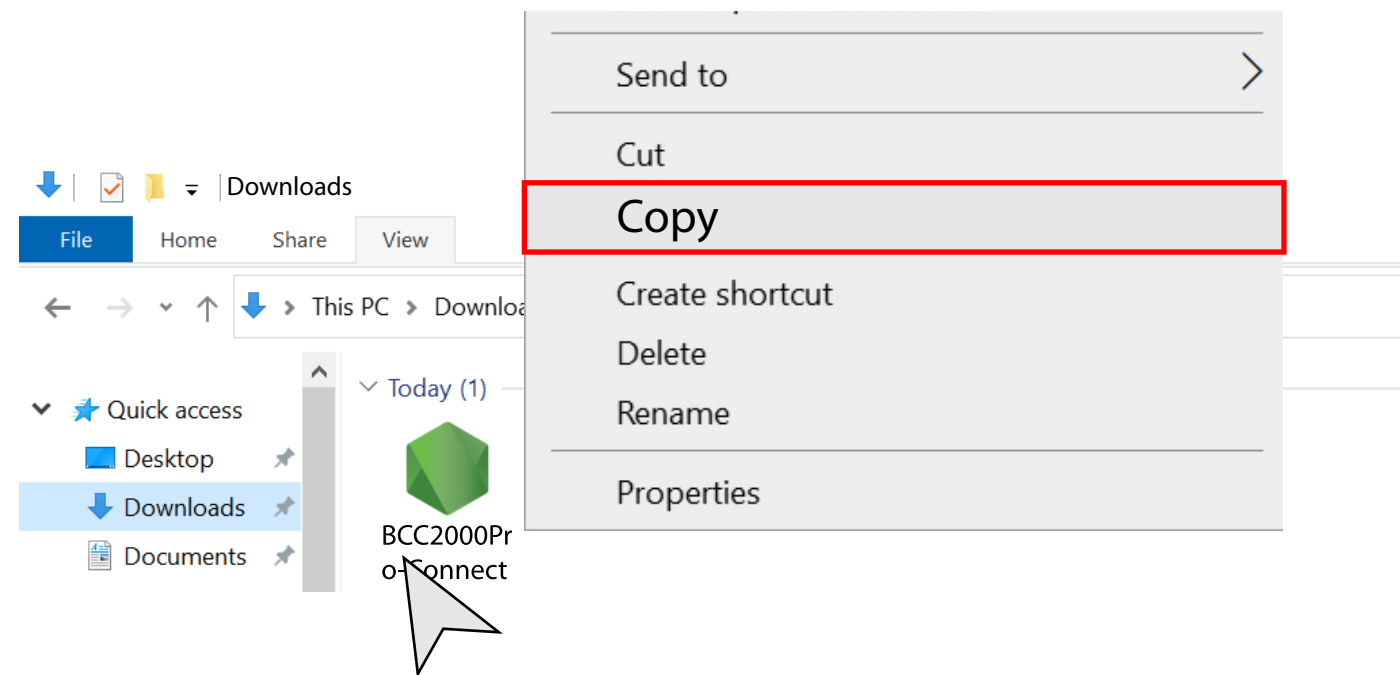
2.1 Download the Brinno Command Center Software.

*If your download is blocked go to the Appendix on page 15 for detailed instructions on how to download the software.



2.2 Create Shortcut

After software is downloaded copy the shortcut to a convenient location like your desktop.





Brinno Command Center

3.1 Connect to Camera

Plug the Cable into your computer.
Your camera should be recognized in less than **5 seconds**.

> Error

If you don't receive an alert that your camera is plugged in then unplug the cable and try again.

Plug the Cable



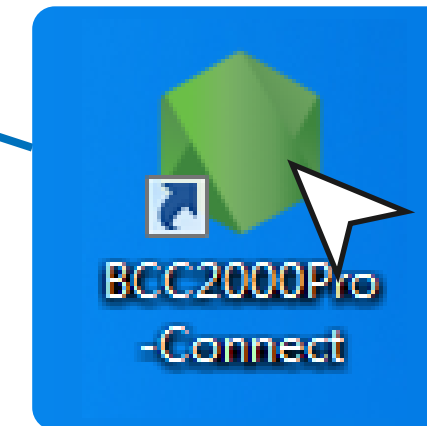
Brinno Command Center

3.2 Go to the folder you saved the command center file, double click to open the **Brinno Command Center software**.

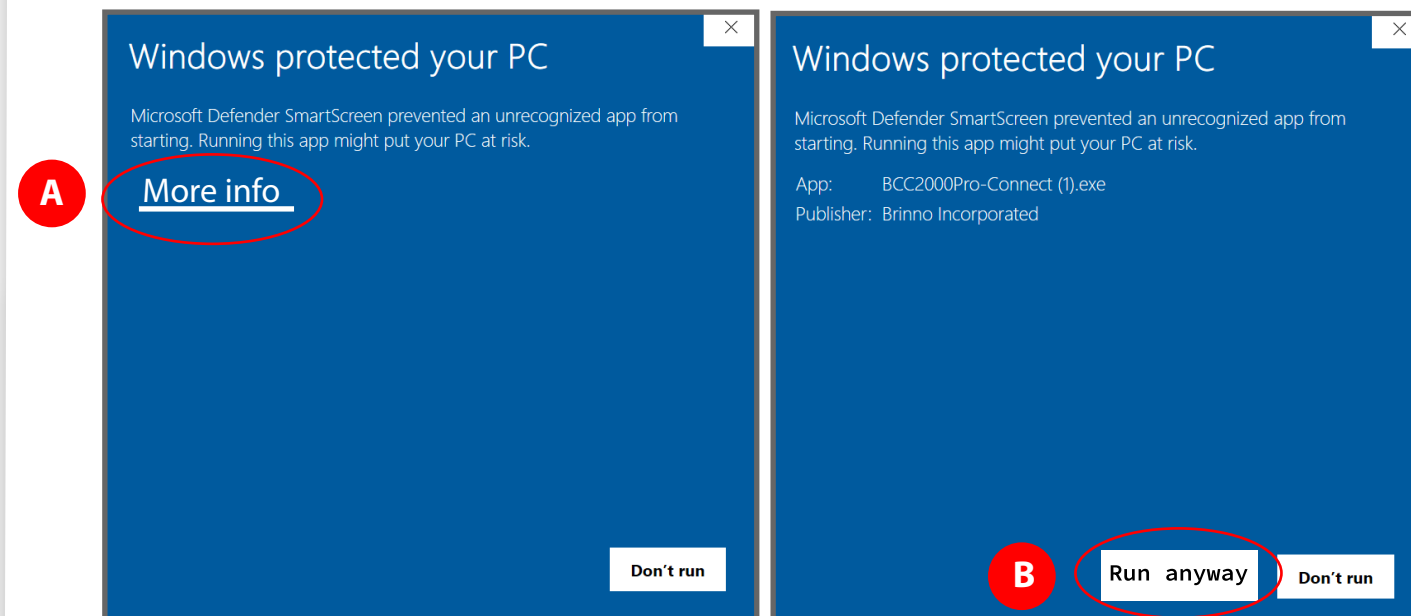
NOTE Before opening the Command Center please make sure your camera is already connected to your computer.

3.3 If opening the software is blocked.

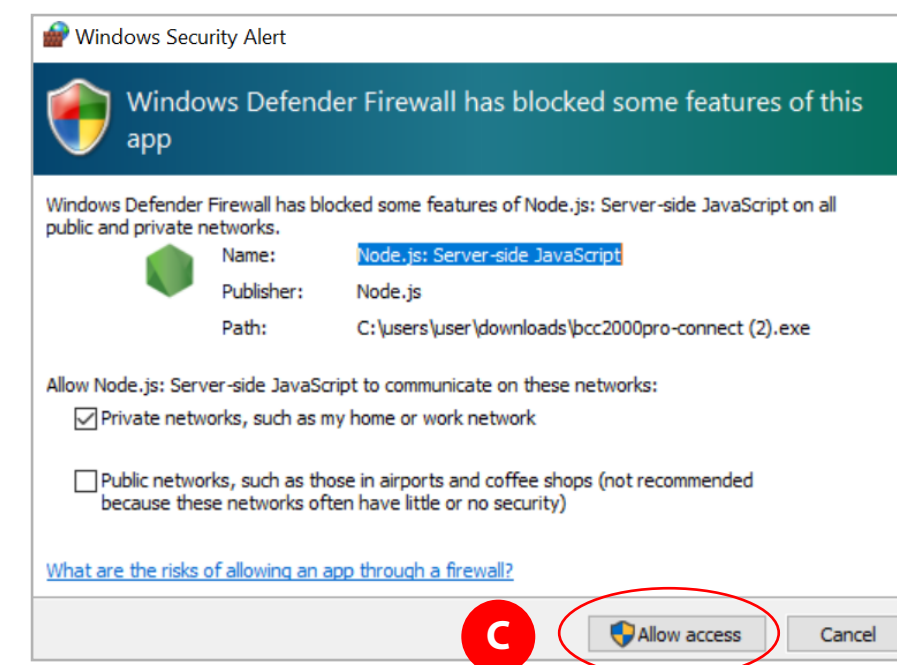
1 **Double Click**



You may have another pop-up warning message, click **“more info”** and then **“run anyway”**.



There may be an additional pop up from Windows Defender or your anti-virus software, click **“Allow Access”** to finish the software download.



3.4 When the software starts an operational screen will pop-up followed by your web browser popping up with the Brinno Command Center page.

Warning

- The operational screen will need to continue running in the background while you are using the Brinno Command Center.
- Keep the operational screen minimized, if you close the page then you will disrupt your camera connection.
- The text you will see is the camera connecting and transferring its internal data to the Command Center.

2 POP-UP

The image shows a Windows desktop environment. At the top, a terminal window titled "C:\Users\User\Downloads\BCC2000Pro-Connect (2).exe" is open, displaying the following text:

```
Windows detected
Windows 10 needINF false
App directory C:\Users\User\Downloads\
Data directory: C:\Users\User\AppData\Roaming\TLC2000\
Log directory: C:\Users\User\AppData\Roaming\TLC2000_LOG\
=====
{"address": "192.168.0.155", "netmask": "255.255.255.0", "family": "IPv4", "mac": "d4
192.168.0.155/24"}
=====
Found C:\Users\User\Downloads\bindings.node skipping
Found C:\Users\User\Downloads\xdg-open skipping
Found C:\Users\User\Downloads\drivelist.node skipping
theEngine( false )
Waiting 10 seconds before attempting communication...
```

An orange callout bubble with the text "minimize it" points to the terminal window. Below the terminal window, a web browser displays the Brinno Command Center interface. The interface features a camera feed of a construction site with cranes. To the right of the feed, there is a "Camera Info" section with the following text:

Please use the "Connect" button.

This program needs the "BCC2000Pro-Connect" program to handle the USB connection.

The latest version is available here:
[BCC2000Pro-Connect.exe](#)

After downloading, use Windows Explorer and double-click on the "BCC2000Pro-Connect.exe" file. This will open a new window and connect to the camera via USB. Then use the "Connect" button on the left.

The latest camera firmware (version 147) is available here:
[TLC2K_FW.BIN](#)

To install, remove the SD card from the camera and put this file in the /DCIM/100TLC2K folder on the SD card. The update will be applied on the next camera reboot.

At the bottom of the web interface, there is a prominent orange "Connect" button.

The text "operational screen" is written in white at the top right of the blue background area. At the bottom right, the text "Brinno Command Center" is written in white.



Brinno Command Center

3.5 Click **Connect** on the bottom left corner to complete the camera connection.

brinno
Brinno BCC2000 Pro Control Board 1.1.7112

Camera Info

Please use the "Connect" button.

This program needs the "BCC2000Pro-Connect" program to handle the USB connection.

The latest version is available here:
[BCC2000Pro-Connect.exe](#)

After downloading, use Windows Explorer and double-click on the "BCC2000Pro-Connect.exe" file. This will open a new window and connect to the camera via USB. Then use the "Connect" button on the left.

The latest camera firmware (version 147) is available here:
[TLC2K_FW.BIN](#)

To install, remove the SD card from the camera and put this file in the /DCIM/100TLC2K folder on the SD card. The update will be applied on the next camera reboot

Connect



Brinno Command Center

3.6 Once connected you will be able to check camera information, change settings and access your camera live view.

Note

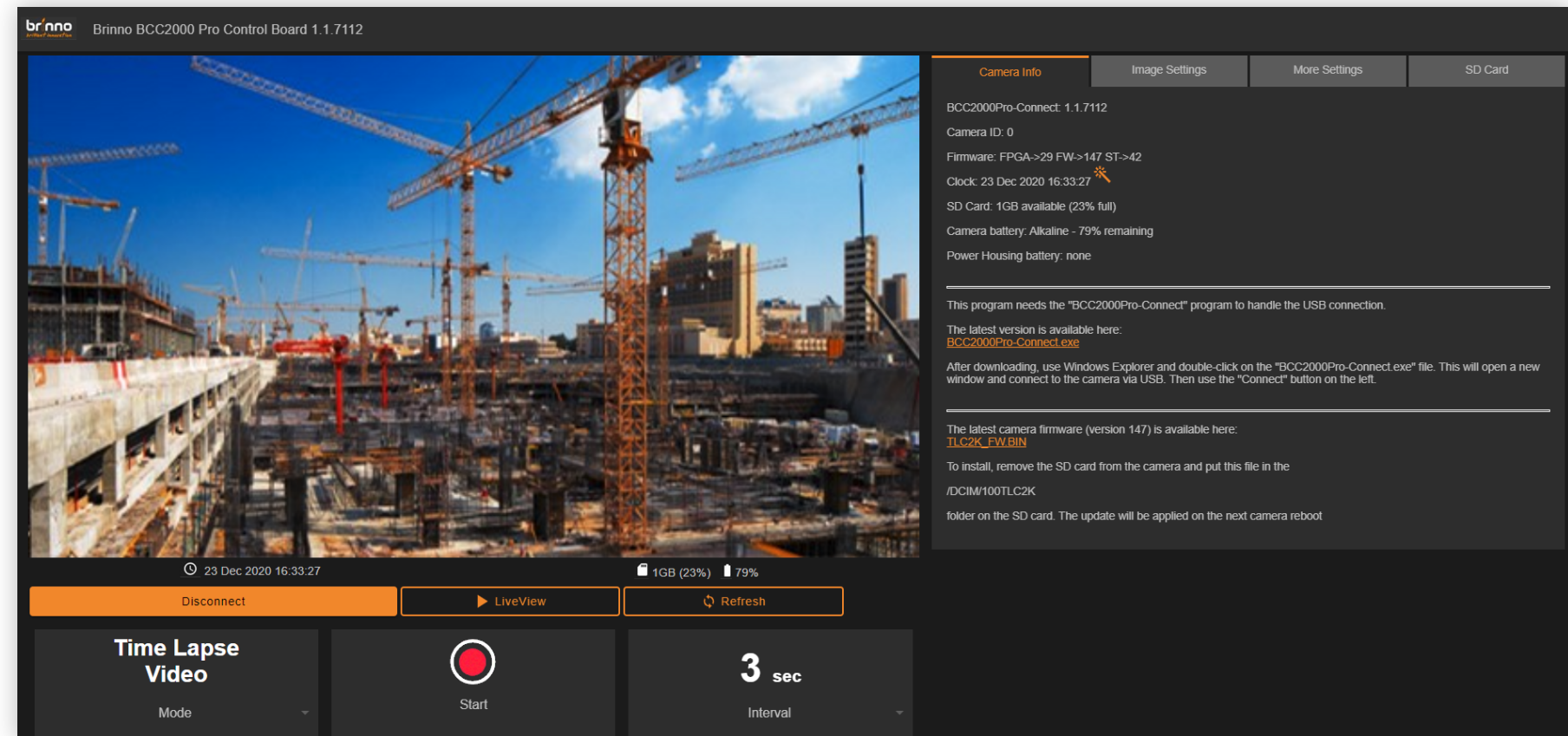
■ If you are a long time Brinno user

The functions found in the Command Center will be familiar because they mirror your TLC2000 camera functions.

Warning

■ If your camera is already recording

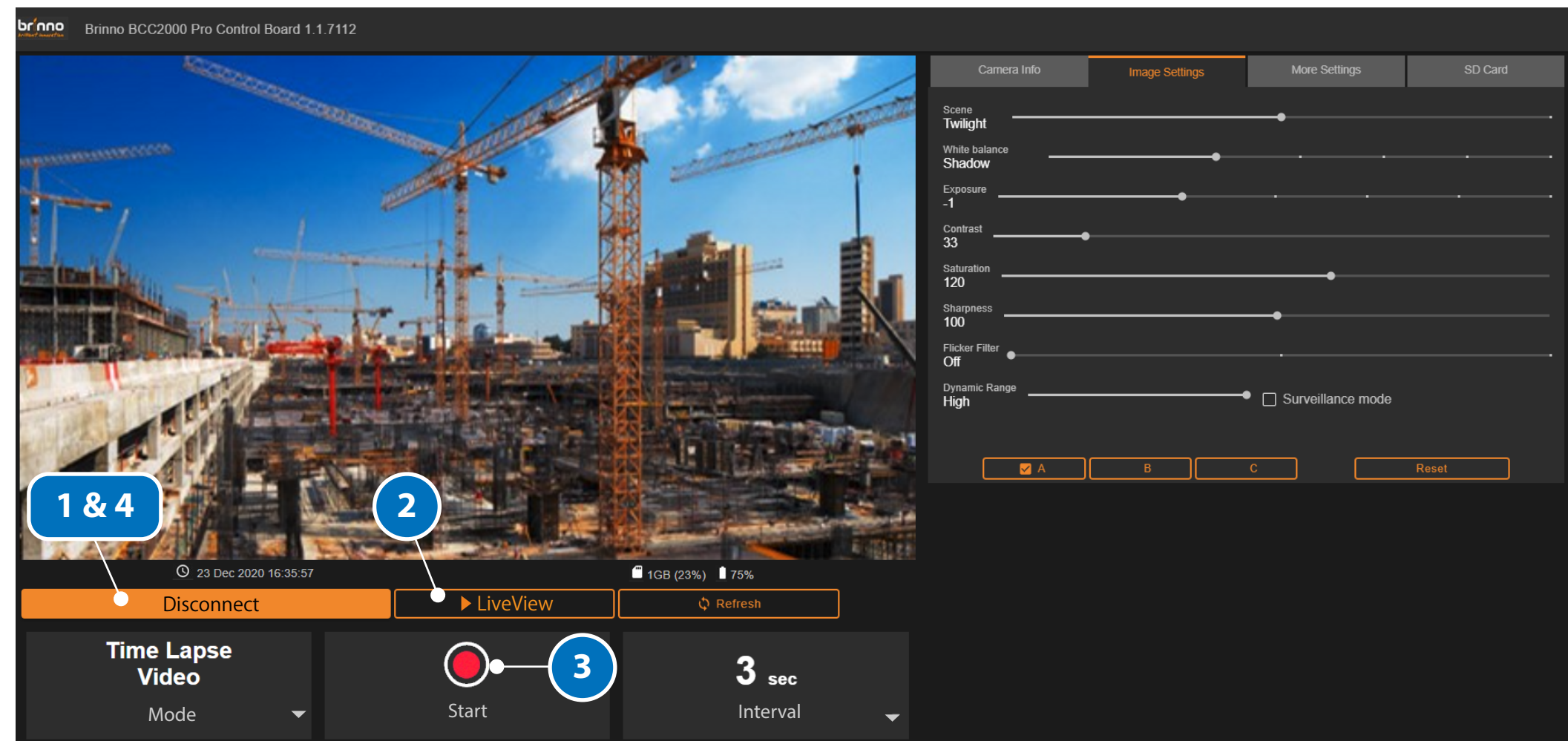
you will not be able to access the live view or change settings - stop recording in order to gain access to all platform capabilities.



Brinno Command Center

Connecting steps

- 1 **Connect your camera** – click **“connect”** to connect your camera to the platform and access camera live view and files on SD card
- 2 **Live view** – click to access camera live view **when camera is not recording**
- 3 **Start/ Stop recording**
- 4 **Disconnect** – click when finished using the platform to disconnect your camera from the platform



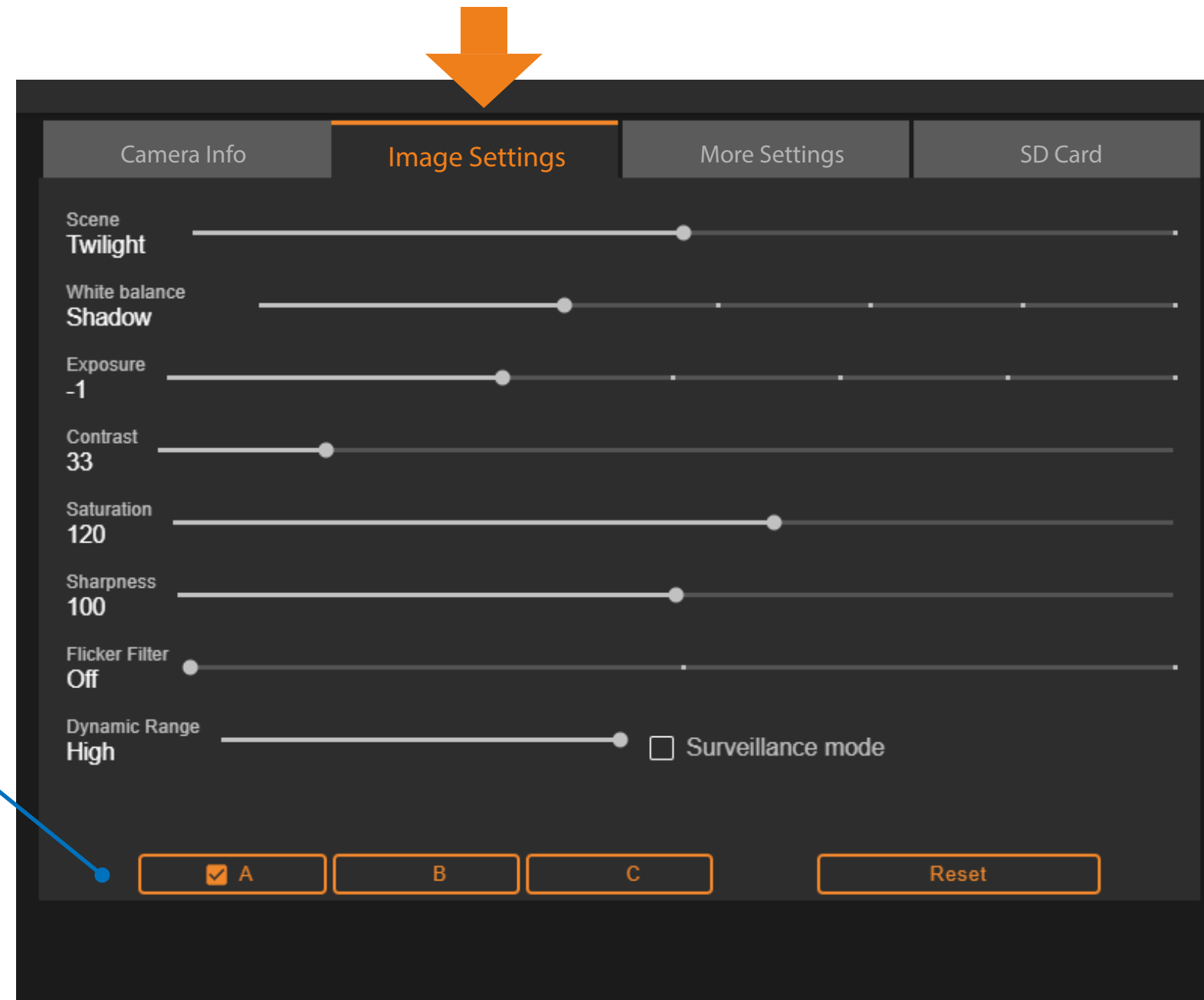


Brinno Command Center

Image Setting Tab

› New feature

Through the **Settings tab**, create and save up to **three setting combinations** that address different locations and environmental conditions.





Brinno Command Center

SD Card Tab

- › Use the SD Card tab to access time lapse files saved on your SD card.

SD Card

Camera Info | Image Settings | More Settings | **SD Card**

BCC2000Pro-Connect: 1.1.7112
Camera ID: 0
Firmware: FPGA->29 FW->147 ST->42
Clock: 23 Dec 2020 16:33:27
SD Card: 1GB available (23% full)
Camera battery: Alkaline - 79% remaining
Power Housing battery: none

This program needs the "BCC2000Pro-Connect" program to handle the USB connection.
The latest version is available here: [BCC2000Pro-Connect.exe](#)
After downloading, use Windows Explorer and double-click on the "BCC2000Pro-Connect.exe" file. This will open a new window and connect to the camera via USB. Then use the "Connect" button on the left.

The latest camera firmware (version 147) is available here: [TLC2K_FW.BIN](#)
To install, remove the SD card from the camera and put this file in the /DCIM/100TLC2K folder on the SD card. The update will be applied on the next camera reboot



Videos | Images | Settings

Name	Size	Date
TLC00001	205592	2020/12/09 16:13
TLC00003	5410384	2020/12/11 11:13
TLC00004	359290680	2020/12/11 13:41
TLC00005	10695192	2020/12/11 14:18
TLC00006	0	2020/12/23 16:34

Reveal in Windows Explorer



Brinno Command Center

Videos Tab

Delete files



The trash can icon deletes files permanently off your SD card.

Download



The download symbol allows you to download files directly onto your computer.

Download Multiple Files

Reveal in Windows Explorer

Reveal in Windows Explorer button will open up your computer file manager and allow you to download multiple files at once.

Renew Camera Status

Refresh

Use the refresh button to renew camera status including SD card and battery. This can be done while the camera is recording.

Videos		Images	Settings
Name	Size	Date	
TLC00001	205592	2020/12/09	16:13
TLC00003	5410384	2020/12/11	11:13
TLC00004	359290680	2020/12/11	13:41
TLC00005	10695192	2020/12/11	14:18
TLC00006	0	2020/12/23	16:34

Reveal in Windows Explorer

23 Dec 2020 16:33:27 1GB (23%) 79%

Disconnect LiveView Refresh

Time Lapse Video **3 sec**

Mode Start Interval

Appendix I.



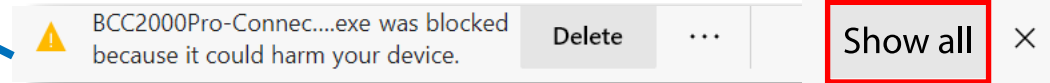
If Download is Blocked...

Microsoft Edge

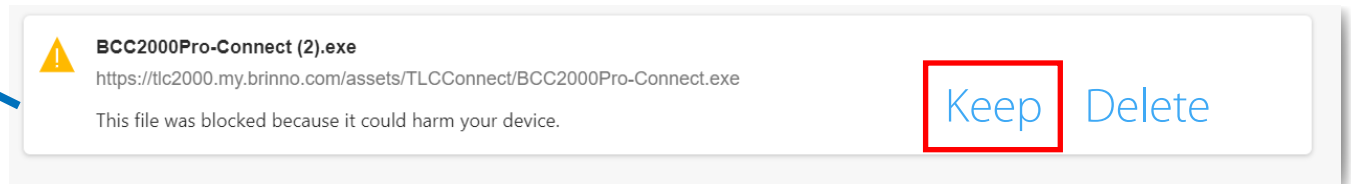
Depending on the browser you are using the download might be blocked, particularly if you are using Microsoft Edge.

You will need to click

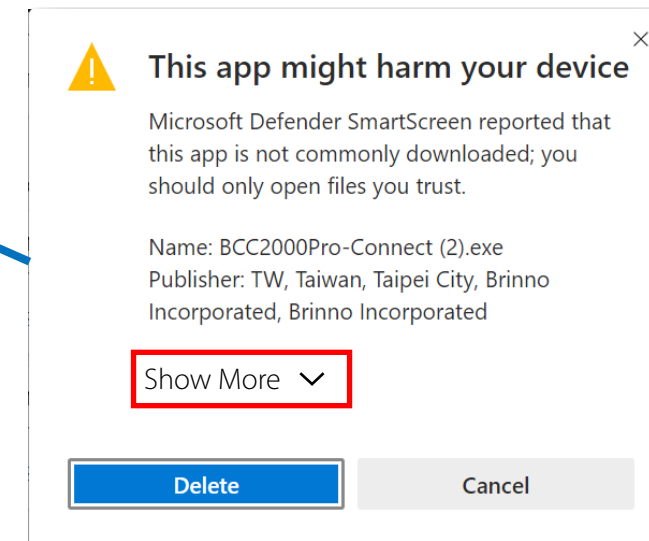
1 Show all



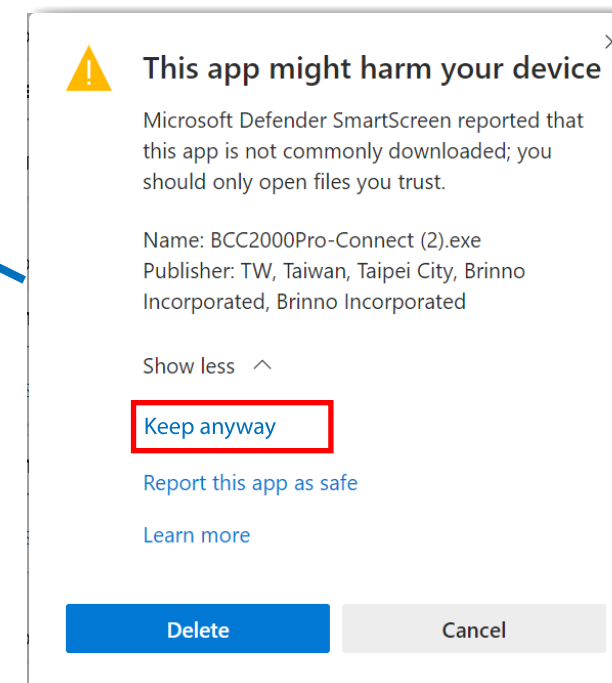
2 Keep



3 Show More



4 Keep Anyway



Support & Download

Brinno Command Center

 <https://www.brinno.com/support/support-center/Command-Center>

Firmware Update

 <https://www.brinno.com/support/support-center/TLC2020>

Firmware Update Tutorial

 <https://www.youtube.com/watch?v=4t7YbGTOuyU>

 www.brinno.com

