



# Harvesting Rainwater With Your Castilla Rain Barrel

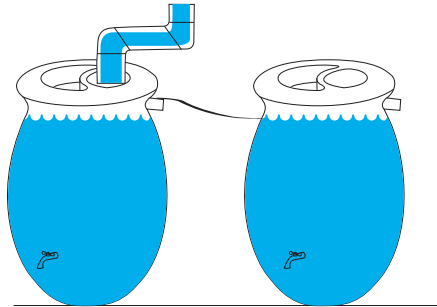
## USING THE PLANTER

The Castilla Rain Barrel has a built in planter to make it even more beautiful. To use the planter simply drill the dimpled areas (using a drill and 1/4" drill bit) on the bottom of the planter. Fill the planter with soil and place plants inside.

## CARE AND MAINTENANCE

The Castilla Rain Barrel is designed to fill a watering can. A Castilla Pump Upgrade Kit is available if you wish to use a pump-driven system to water your garden directly from up to 2 Castilla rain barrels.

To divert the water away from your foundation, simply clamp a 1.5" piece of tubing (pond tubing / sump pump tubing / vacuum tubing and hose clamp not included) to the overflow and run it away from the rain barrel. The second overflow is for linking rain barrels together. It is recommended that you build a platform (E.g. out of bricks) to raise Castilla, in order to improve the water flow out of the hose and the spigot.



During the winter months you should drain the water inside the Castilla Rain Barrel and leave the valve in the hose in the open position. You may want to bring your Rain Barrel inside to protect it from the elements, but this is not necessary. The unique design of the Castilla Rain Barrel allows it to withstand extreme weather.

## WARRANTY

The Castilla Rain Barrel carries a 20 Year Limited Warranty on the Barrel only. All accessories included with the Castilla Rain Barrel are NOT included in the Warranty. The Warranty covers manufacturers defects only. The Warranty does NOT cover neglect or owners misuse.

*If any parts are missing from your Castilla Rain Barrel please fax proof of purchase and shipping address to 519-623-7206 with the name or description of the missing part, so it can be sent out.*



## HOW YOUR PURCHASE IS IMPACTING THE ENVIRONMENT

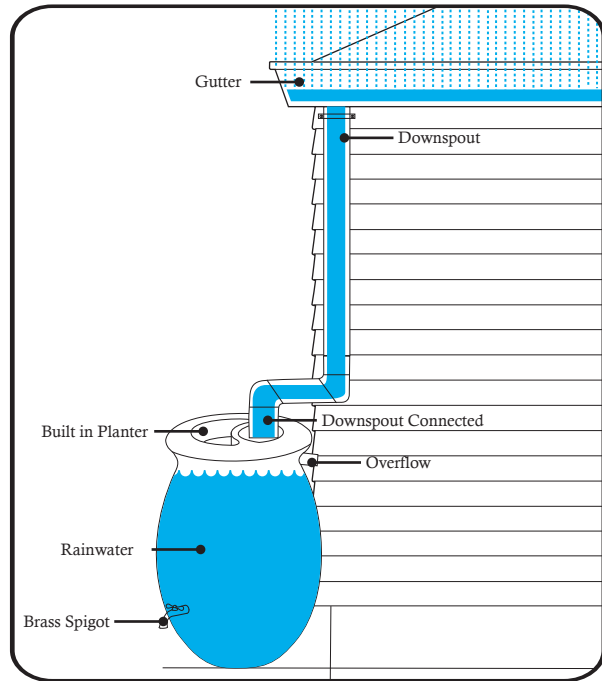
- More than 70% of the Earth's surface is covered in water yet only 2.5% of this supply is considered fresh water. The rest is found in the form of salt water in oceans.
- Of the freshwater that exists, most is locked up in glaciers and ice caps.
- Unfortunately, much of the small amount of freshwater is in danger of drying up through desertification or becoming so contaminated for human consumption.
- Changing our habits of water use can help abate this growing problem. Installing the Castilla Rain Barrel will help to reduce the amount of freshwater consumed for outdoor use.



100 Pinebush Road  
Cambridge Ontario Canada  
N1R 8J8  
1-800-984-9933

[www.algreenproducts.com](http://www.algreenproducts.com)

## Congratulations on the purchase of your new Castilla Rain Barrel.



The Castilla Rain Barrel system is an easy way to collect and store natural rainwater.

- Helps to save you money by reducing your water consumption
- Stores water for use during time of drought and water restrictions
- Rainwater is good for plants because it is naturally low in salt and chlorine
- Great for watering indoor and outdoor plants and washing cars and windows

### HOW MUCH CAN YOU HARVEST

To find out how much water your roof will collect you first need to calculate the catchment area.

L= total length of your house

W= total width of your house

$(L + eaves) \times (W + eaves) = \text{Catchment}$

**Example:  $(36 + 4) \times (46 + 4) = 2000 \text{ sq ft.}$**

1 inch of rainfall can provide an average of 600 gallons per 1000 sq ft. catchment area

$(\text{Catchment area} / 1000) \times 600 \text{ gallons} = \text{total gallons of water collected per 1 inch of rainfall}$

**Example:  $(2000/1000) \times 600 \text{ gallons} = 1200 \text{ gallons}$**

To find out how much you will collect in a year:

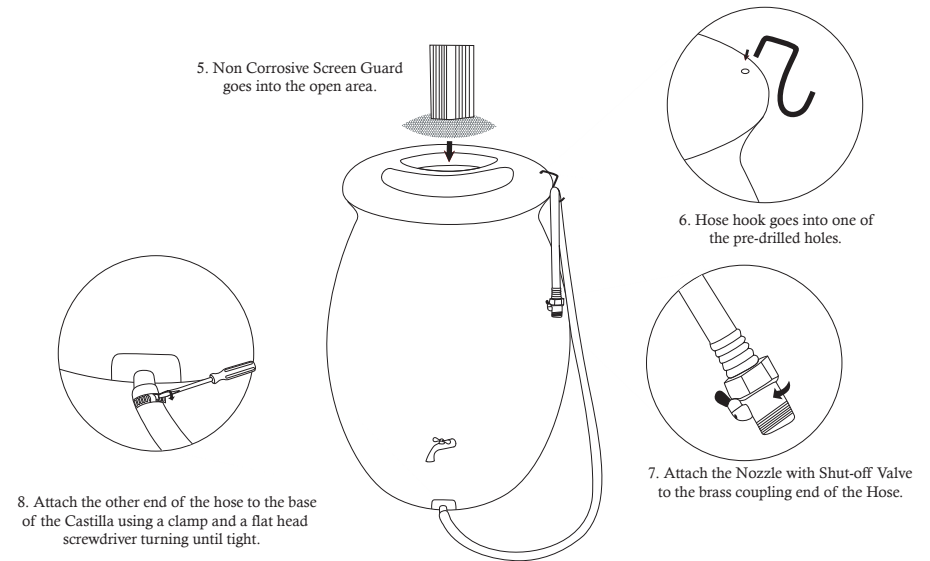
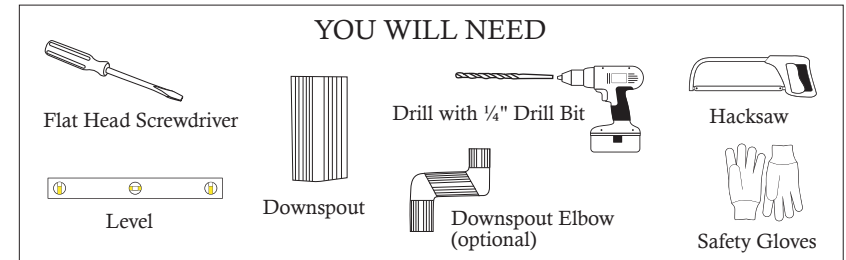
Total gallons of rainwater per sq. inch x average rainfall per year in inches = total gallons per year

**Example:  $1200 \text{ gallons of water per sq. inch} \times 20 \text{ inches of rainfall a year} = 24\,000 \text{ gallons}$**

To find out rainfall in your area visit:

<http://countrystudies.us/united-states/weather/>

## Castilla Rain Barrel Instruction and Care Manual



*The Castilla is an excellent way to conserve water. The water kept in the Castilla Rain Barrel is for gardening purposes only and should not be consumed by humans or animals.*

### TO START

Start by choosing a location for the Castilla Rain Barrel where there is a downspout near by.

1. Place the Downspout Elbow on the Castilla and hold it up to the Downspout and mark a line with a pencil.
2. Using the Hacksaw cut a straight line at the mark you just made.
3. Place the Screen Guard in the open area on the top of the Castilla Rain Barrel.
4. Attach a downspout elbow (optional) to the downspout and rest downspout above screen.
5. Using the Level ensure your Castilla Rain Barrel is level to avoid tipping when full.
6. Attach the Hook for the Hose to the Castilla Rain Barrel by putting it into the pre-drilled hole on the top of the Rain Barrel.
7. Attach the Nozzle with Shut-off Valve to the threaded end of the hose.
8. Screw in the hose to the outlet at the bottom of the rain barrel.
9. Attach the spigot by screwing it into the fitting on the front of the Castilla until snug.