

March 7, 2018

Version 1

Safety Recall: Second Row Outer Seat Striker Bracket (Seat Tipping)

AFFECTED VEHICLES

Year	Model	Trim	VIN Range
2011-17	Odyssey	ALL	Check the iN VIN status for eligibility.

BACKGROUND

The second row outboard (outer) seats can be placed in two positions, standard or wide. The rear outboard strikers have a collar to define the two set positions. If a second row outer seat is positioned over the collar while latching the seat to the floor, the seat will not properly latch. An unlatched second row outer seat may tip forward during moderate to heavy braking, increasing the risk of injury to an occupant, including a child seated in a LATCH (Lower Anchor and Tethers for Children) installed child seat. Parts to remedy this defect are now available for installation on affected vehicles.

CUSTOMER NOTIFICATION

Owners of affected vehicles will be sent a notification of this campaign.

Do an iN VIN status inquiry to make sure the vehicle is shown as eligible.

Some vehicles affected by this campaign may be in your new or used vehicle inventory.

Failure to repair a vehicle subject to a recall or campaign may subject your dealership to claims or lawsuits from the customer or anyone else harmed as a result of such failure. To see if a vehicle in inventory is affected by this safety recall, do a VIN status inquiry before selling it.

CORRECTIVE ACTION

Install a second row seat striker bracket and a warning label on both second row outer seats. Additionally, place a supplemental Owner's Manual/Owner's Guide information card in the glove box.

PARTS INFORMATION

Part Name	Part Number	Quantity
Second Row Striker Bracket (Mid Seat Function Service Kit)	81310-TK8-305	1

CUSTOMER INFORMATION: The information in this bulletin is intended for use only by skilled technicians who have the proper tools, equipment, and training to correctly and safely maintain your vehicle. These procedures should not be attempted by "do-it-yourselfers," and you should not assume this bulletin applies to your vehicle, or that your vehicle has the condition described. To determine whether this information applies, contact an authorized Honda automobile dealer.

SPECIAL TOOLS

Tool Name	Tool Number	Quantity
Trim Roller	MHLE54D	1
TORX®Plus Socket Driver, Tamper Resistant, 27IPR	FTXR27TPE (Commercially Available)	1

Each dealer was shipped two trim rollers and one Torx driver. If you need additional tools, they are available for ordering through the tool and equipment program.

WARRANTY CLAIM INFORMATION

Operation Number	Description	Flat Rate Time	Defect Code	Symptom Code	Template ID	Failed Part Number
8180A5	Install a striker bracket onto both outer second row seat strikers.	0.4 hr	6SS00	P0Q00	A18021A	04655-TK8-A60ZZ

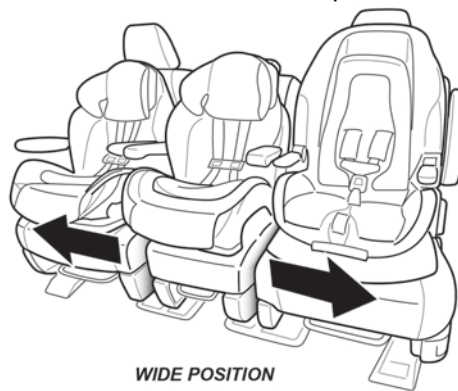
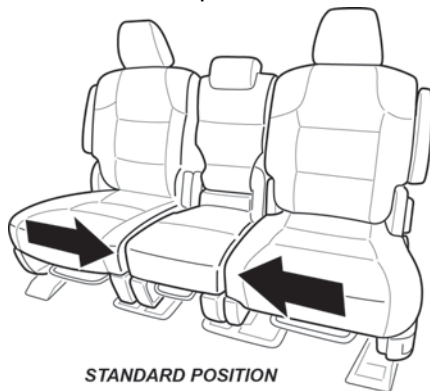
Skill Level: Repair Technician

REPAIR PROCEDURE

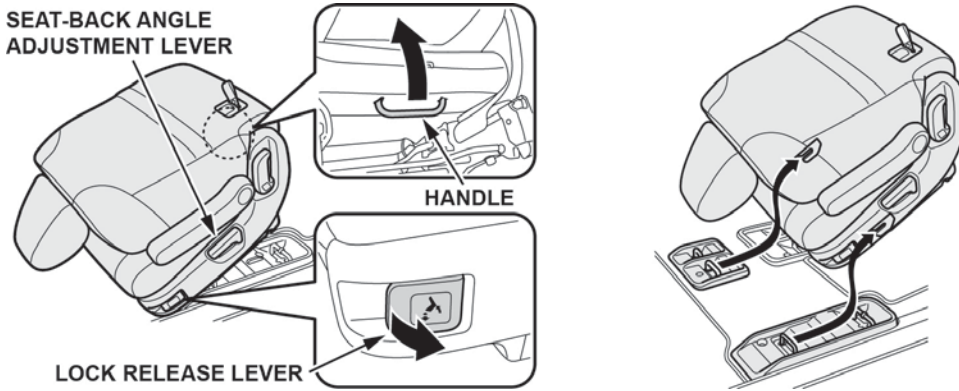
NOTE

Remove any child or booster seats that are installed in the second row seats and place them in the cargo area for the customer to reinstall.

- The second row seats can be installed in either the standard or wide position. Before you remove the seats, take note of the seat positions to make sure you reinstall them in the same positions after the repair.



- Lower the head restraint to its lowest position, and slide the seat to its rearmost position. Pull the recline lever to fold the seat-back down.



- Pull the lock release lever, and grab the handle under the rear side of the seat cushion to lift the rear of the seat. Move the seat out of the way by pulling it back slightly, then pivoting it up to unhook the front of the seat from the floor.

- Install the bracket.

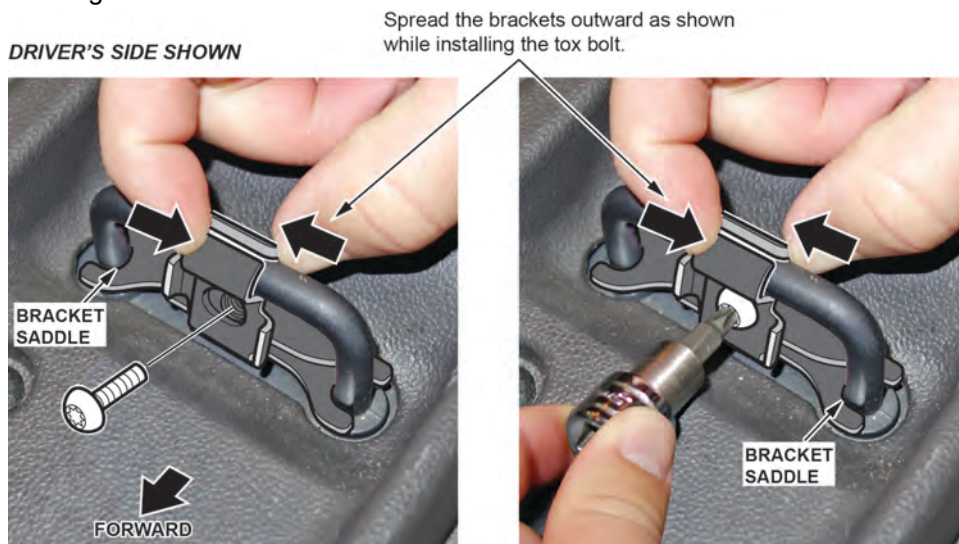
- Make sure both tabs face forward (as shown) when installing the two-piece bracket on the front seat striker closest to the sliding door.



- Place the front half and rear half of the bracket between the seat striker (driver's side) as shown.



- 4.3. Spread the brackets outward until the bracket saddles contact the inside of the front outboard floor striker and hand tighten the Torx bolt.



- 4.4. Continue spreading the brackets outward and hold the bracket saddles tightly against the inside of the front outboard floor striker and torque the bolt to **13 N·m (9 lb-ft, 108 lb-in.)**.



- 4.5. Repeat steps 2-4 for the other second row seat.

5. Attach the warning label.

NOTE

Follow the label attachment instructions exactly and use the trim roller. Do not use your hand as you won't apply enough pressure to set the adhesive and the label may lift or wrinkle around the edges.

- 5.1. Place the seat on its side as shown.



Thoroughly clean area with isopropyl alcohol.

- 5.2. Thoroughly clean the indicated area of the recline cover with isopropyl alcohol and a clean shop rag, and let the alcohol evaporate.

NOTE

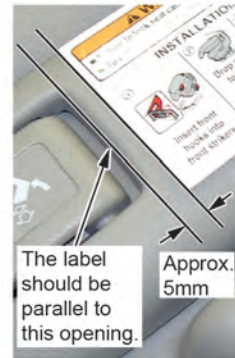
Do not touch the area that you cleaned.

- 5.3. Align the label as shown, and apply a strip of low-tack masking tape on the rear half to hold the label in place.

Center the label on the release lever.



Tape the label's rear edge.



The label should be parallel to this opening.

Approx. 5mm

- 5.4. Lift the label and begin removing the adhesive backing starting from the center of the label. Using the trim roller, apply firm pressure to the label, rolling from the center of the label to the outside edge as shown. This method helps prevent air bubbles and pockets from forming.



- 5.5. Remove the masking tape, lift the label, and begin removing the adhesive backing starting from the center of the label. Using the trim roller, apply firm pressure to the label, rolling from the center of the label to the outside edge as shown.



- 5.6. Use the rubber roller and apply firm pressure while rolling the entire surface of the label as shown to set the adhesive.

NOTE

Use the trim roller to set the adhesive. Do not use your hand as you won't apply enough pressure to set the adhesive and the label may lift or wrinkle around the edges.

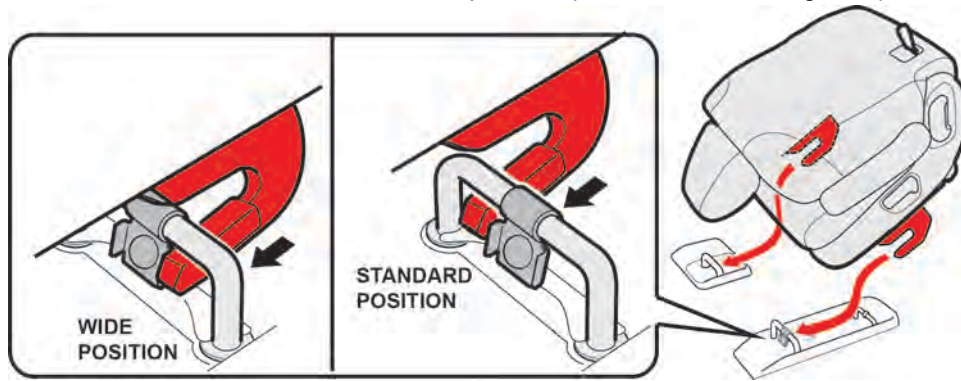


- 5.7. Repeat step 5 for the other second row seat.

6. Install and confirm seats securely latch in both the standard and wide positions.

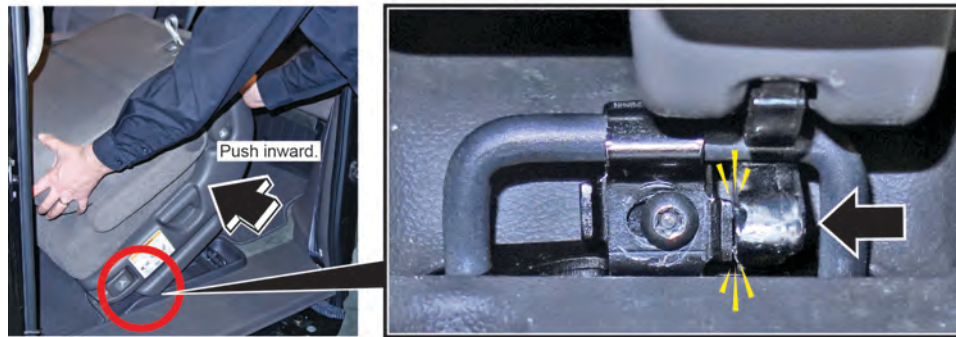
6.1. Check Wide Position

6.1.1. With the seat-back folded down and adjusted to the rearmost position, insert the hooks into the floor strikers with the outer hook in the wide position (closest to the sliding door).

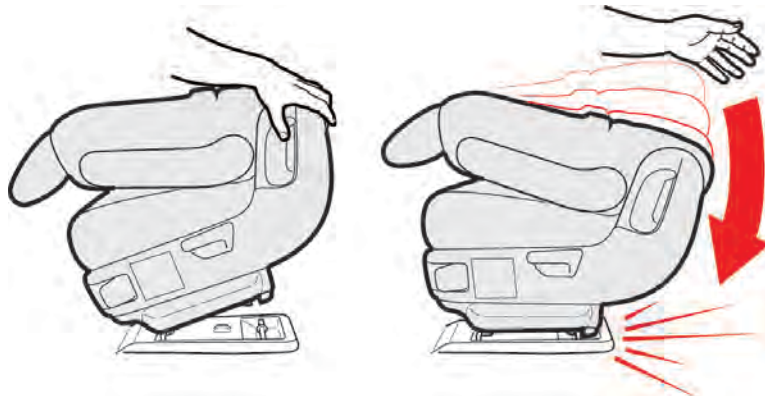


6.1.2. Next, push the seat in toward the center of the vehicle until the front outer hook contacts the countermeasure bracket as shown.

WIDE POSITION (Driver's side shown)



6.1.3. After confirming both front hooks are fully inserted into the front strikers, begin to lower the seat then allow it to drop and lock to the rear floor strikers.

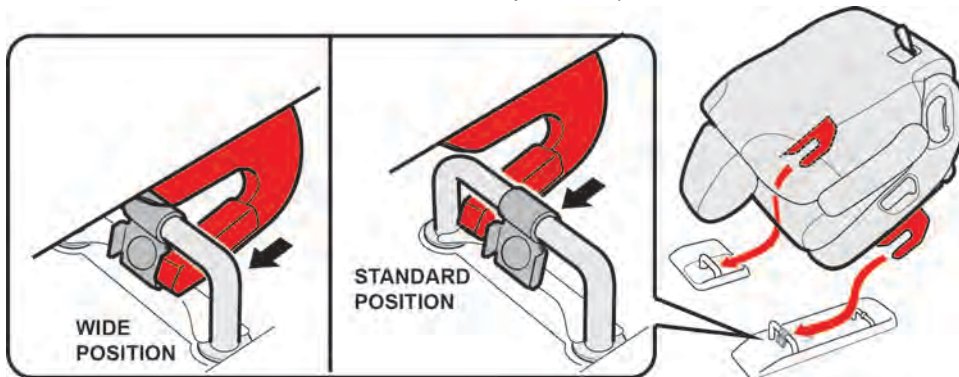


- 6.1.4. Raise the seat-back to an upright position, then rock the seat back and forth to confirm both the inner and outer latches are securely locked into position.



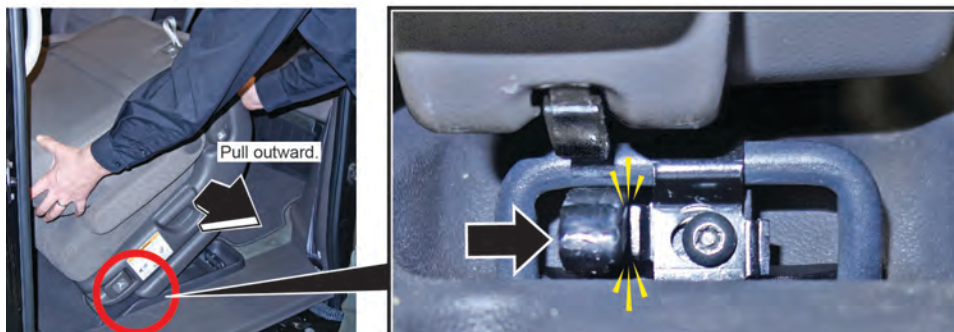
6.2. Check Standard Position

- 6.2.1. With the seat-back folded down and adjusted to the rearmost position, pull the lock release lever, and grab the handle under the rear side of the seat cushion to lift the rear of the seat. Pull the seat-back slightly; then pivot it upward to unhook the front of the seat from the floor. Reposition the seat and insert the front seat hook into the standard position (closest to the center of the vehicle).

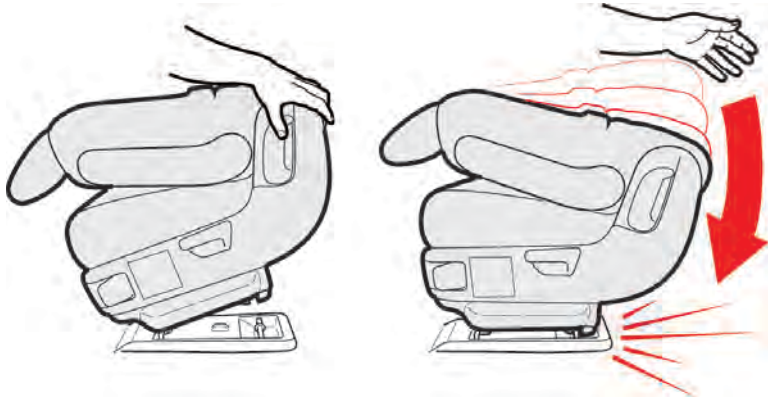


- 6.2.2. Next, pull the seat outward until the front outer hook contacts the countermeasure bracket as shown.

STANDARD POSITION (Driver's side shown)



- 6.2.3. After confirming both front hooks are fully inserted into the front strikers, begin to lower the seat then allow it to drop and lock to the rear floor strikers.



- 6.2.4. Raise the seat-back to an upright position, then rock the seat back and forth to confirm both the inner and outer latches are securely locked into position.



7. If the seat was installed in the wide position when the vehicle arrived (see step 1), move the seat to the wide position for the owner's convenience. Make sure both front seat hooks are fully inserted in the floor strikers and rock the seat back and forth to confirm both the inner and outer latches are securely locked into position.

8. Place the Owner's Manual Supplemental Information Card in the glove box.

2011-2017 Second-Row Outer Seat Removal/Installation/Adjustment

Removing the 2nd Row Outer Seats

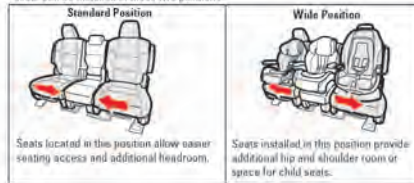
Use the following steps to properly remove a 2nd row outer seat:

1. Lower the head restraint to its lowest position.
2. Move the seat to its rearmost position.
3. Pull the Seat-Back Angle Adjustment Lever to fold the seat-back down.
4. Pull the lock release lever, and grab the handle under the rear side of the seat cushion to lift the rear of the seat.
5. Pull the seat-back slightly; then pivot it upward to unhook the front of the seat from the floor.
6. Remove the seat.



Installing the 2nd Row Outer Seats

Use the following steps to properly install a 2nd row outer seat. The 2nd row outer seats can be installed in these two positions:



1. With the seat-back folded down, insert the front seat hooks into the front floor strikers making sure the hook closest to the sliding door is inserted into the desired standard or wide position as shown.

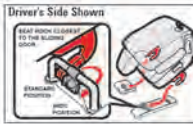


Fig 1 of 2

END