



# FujiFilm FinePix A340 Motherboard Replacement

"How to remove and replace the logic board."

Written By: Cody



---

## INTRODUCTION

*How to remove and replace the logic board.*

---

### TOOLS:

- [Phillips #0 Screwdriver](#) (1)
  - [Spudger](#) (1)
-

## Step 1 — Outer Case



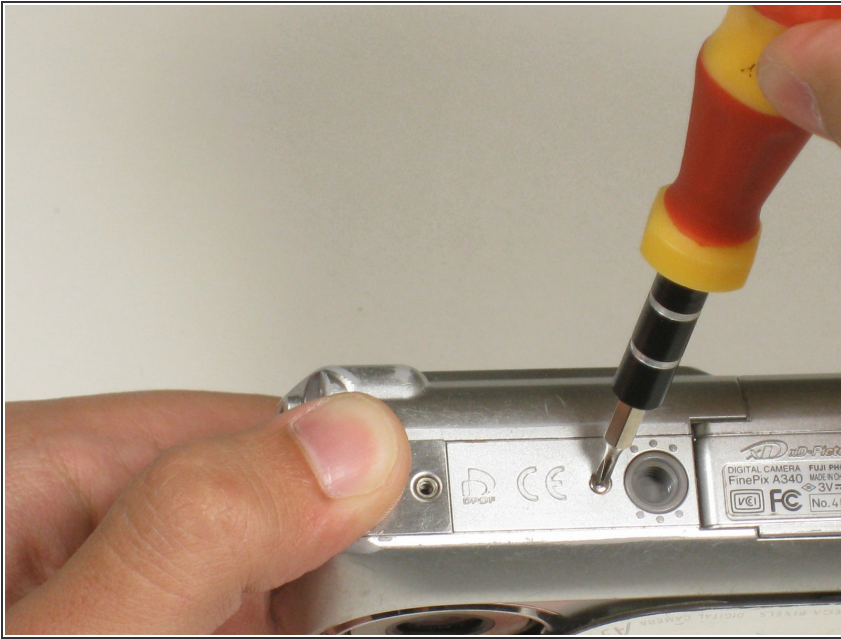
- Remove the batteries from the camera to prevent danger of electric shock.

## Step 2



- Locate all five screws on the camera. Then proceed to remove all the screws.

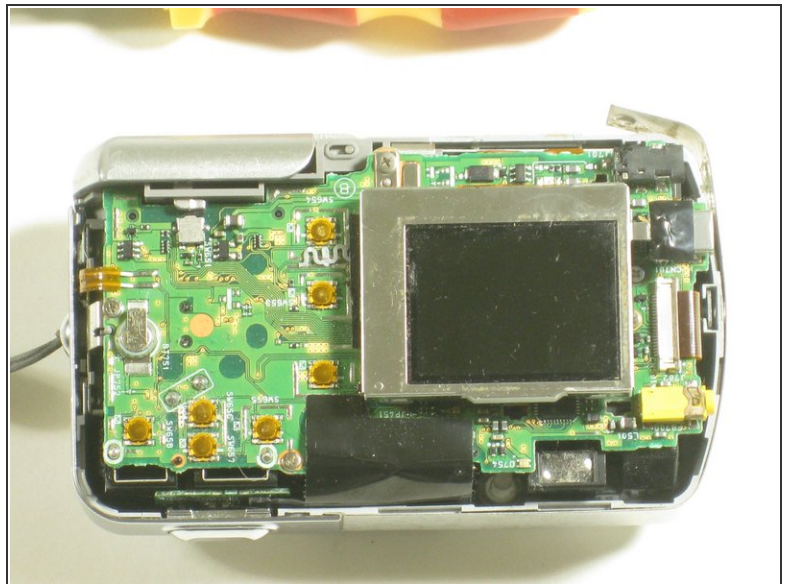
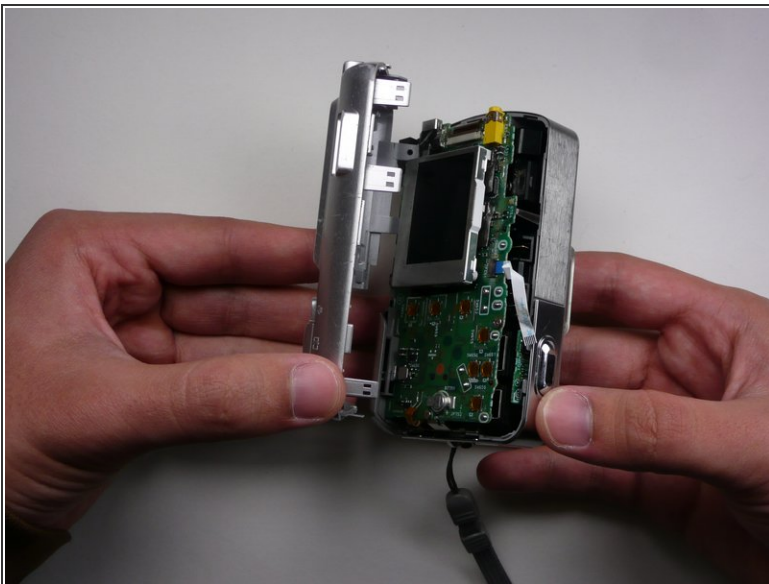
### Step 3



**⚠** Beware, if your screwdriver does not fit properly, you may damage the screws' heads.

- If your screwdriver does not fit, or you do not have the proper one, you can use a hot glue gun to fix the screwdriver to the head of the screw. Wait for it to harden slightly, and then try to remove the screws.

### Step 4



- Remove outer case. Pull the back away from the main body of the camera.

## Step 5 — LCD Screen



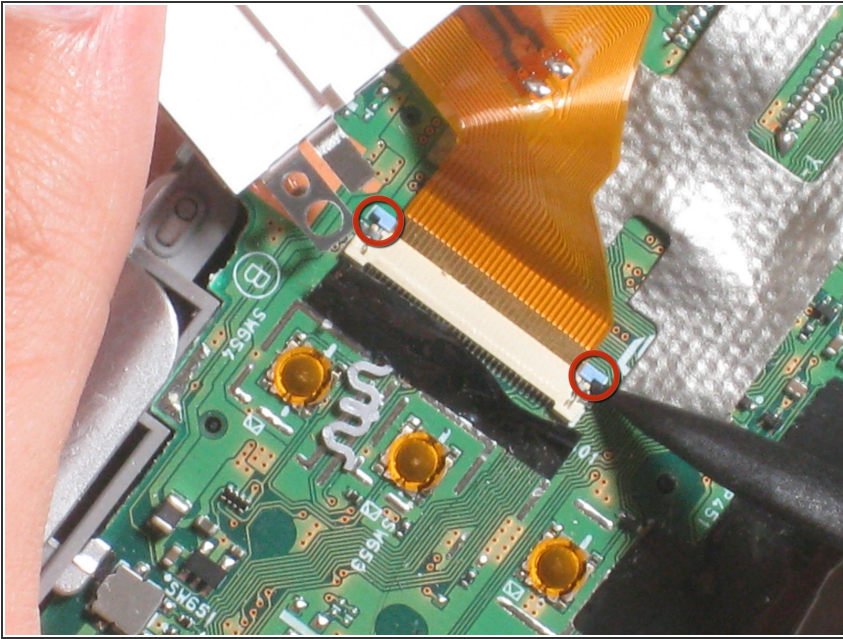
- Locate the LCD screen and anchoring screw.
- Remove screw.

## Step 6



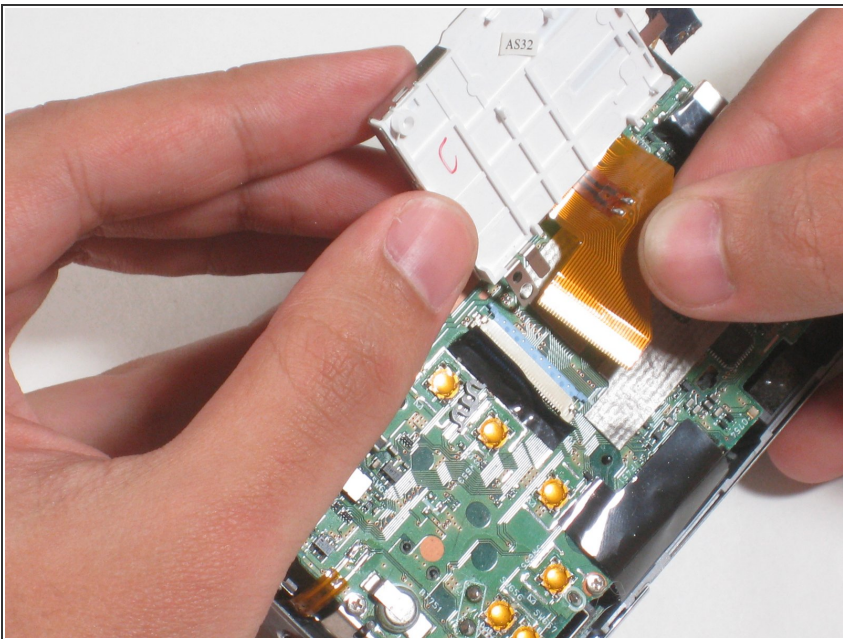
- Carefully pull the LCD screen away from the board it is connected to.

## Step 7



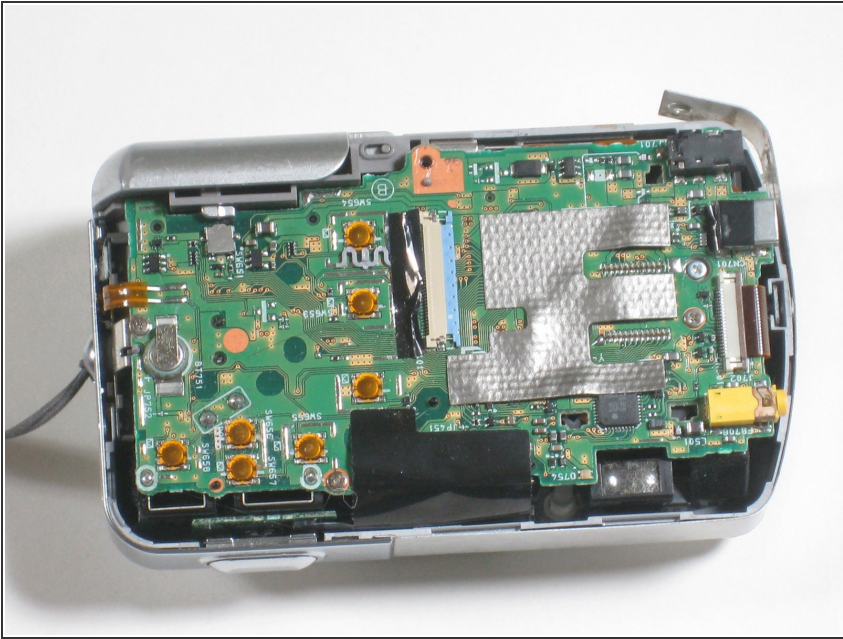
- Push both blue switches away from the holding device to unlash lcd ribbon.
- ⚠ Be careful when removing ribbon. If you damage it, you will need to replace it as well.

## Step 8



- Carefully detach the ribbon from where it was connected by the blue pins.

## Step 9



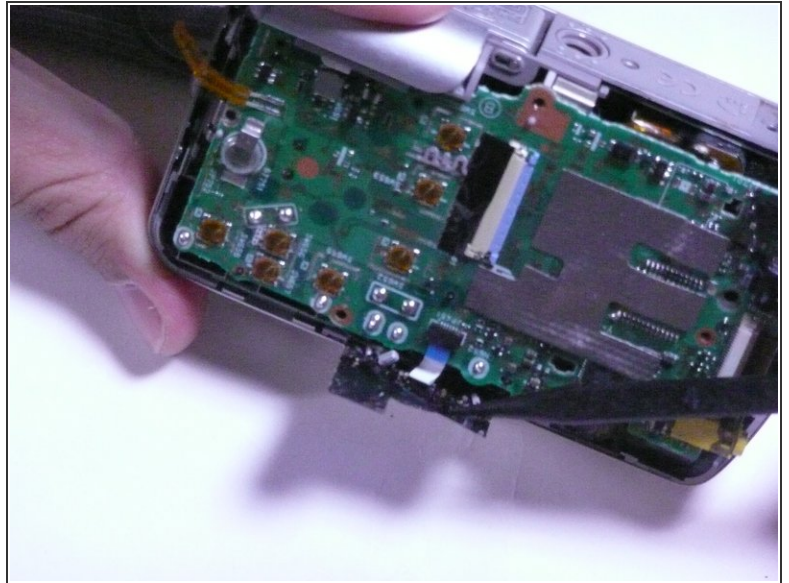
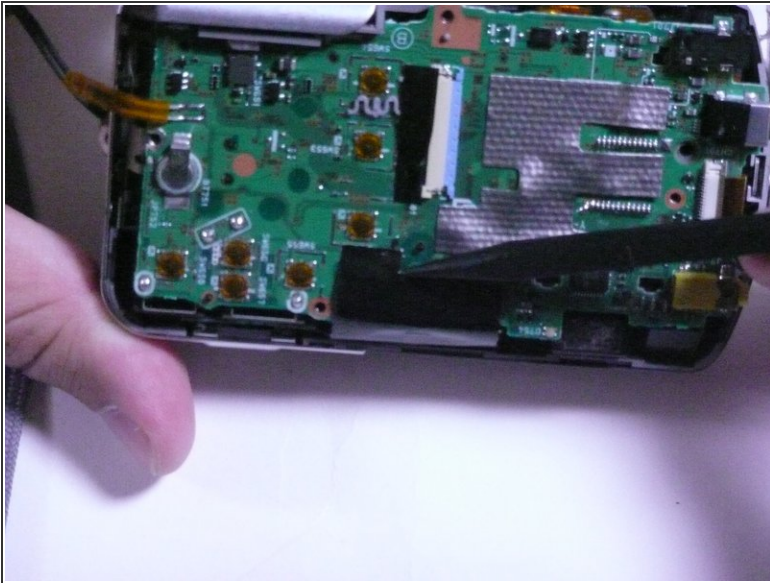
- Now that everything has been disconnected from the board, remove LCD screen.

## Step 10 — Motherboard



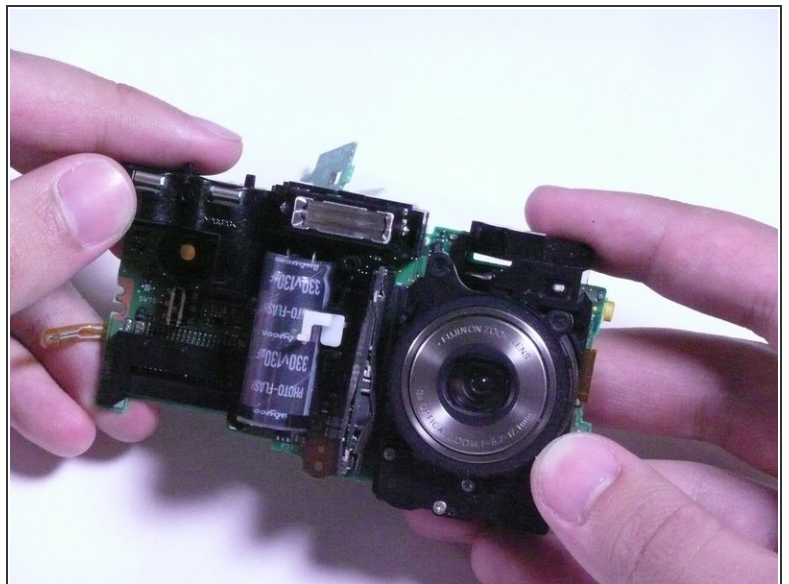
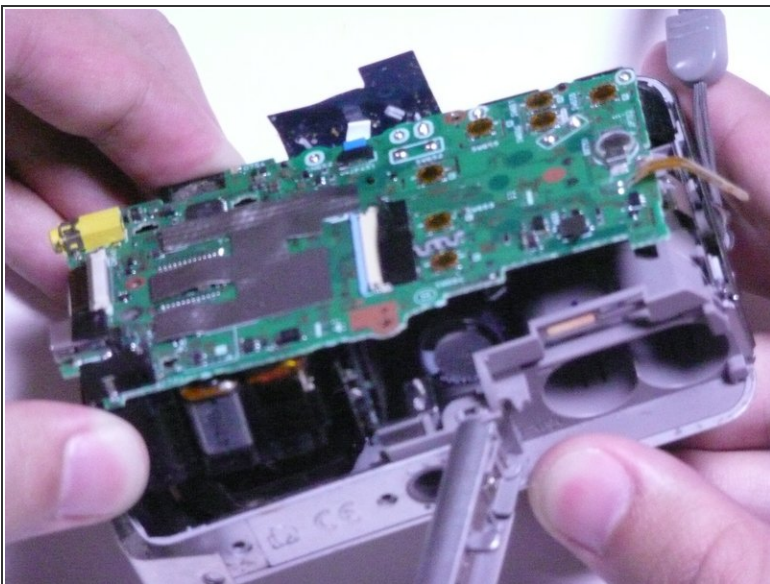
- Remove the two screws holding the circuit board down.

## Step 11



- Remove black sticky tape from circuit board and camera case.

## Step 12

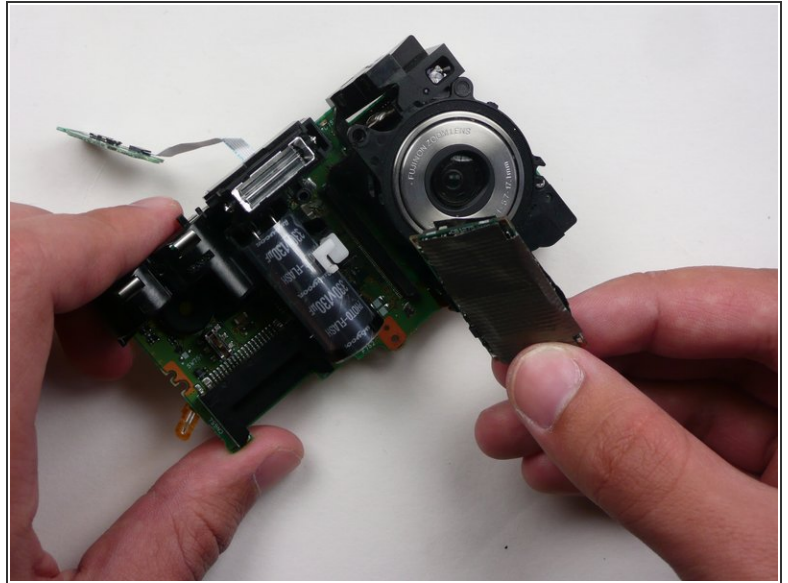
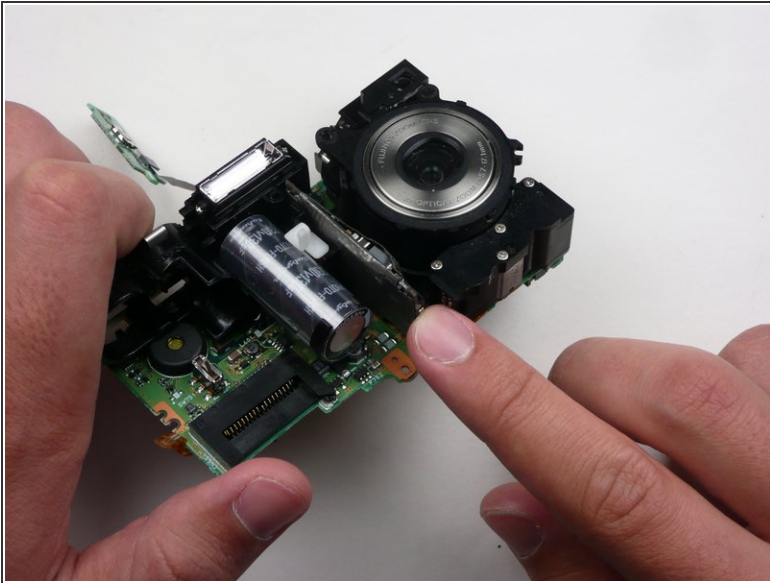


- Gently pull the circuit board away from the front side of the camera.

⚠ Be careful when removing assembly as to not break any solder leads or damage lens assembly.



## Step 13



- Remove the logic board by pulling straight away from assembly.

To reassemble your device, follow these instructions in reverse order.