

# ControlLogix Enhanced Redundancy System, Revision 16.081\_kit5

## Redundancy Module Catalog Numbers

1756-RM, 1756-RMXT, 1756-RM2, 1756-RM2XT

## Controller Catalog Numbers

1756-L61, 1756-L62, 1756-L63, 1756-L63XT, 1756-L64

## Communication Module Catalog Numbers

1756-CN2/B, 1756-CN2R/B, 1756-CN2RXT/B, 1756-CN2/C, 1756-CN2R/C, 1756-CN2RXT/C, 1756-CN2RK/C, 1756-EN2T/C, 1756-EN2T/D, 1756-EN2TXT/C, 1756-EN2TXT/D

These release notes describe enhancements, corrected anomalies, and known anomalies specific to redundancy system firmware revision 16.081\_kit5 or earlier.

Topic	Page
Product Release Notes	2
About This Redundancy Firmware Bundle	2
Compatible Software Versions	5
About the Redundancy Module Configuration Tool	5
Enhancements	7
Corrected Anomalies	10
Known Anomalies	15
Restrictions	17
Application Notes	18
Using a Redundant System with a FactoryTalk Batch Server	22
Using a Redundant System and CIP Equipment Phases	23
Upgrade from an Enhanced Redundancy Revision	28
Update IP Address Set Via Software to Address Set Via Rotary Switches	47
Replace 1756-RM/B (or earlier) Modules with 1756-RM2 Modules	51
Replace the 1756-EN2T Modules	52
Replace the 1756-CN2 Modules	63
Upgrade Ethernet Modules when Rotary Switches are Set between 2...254	67
Store a Project to Nonvolatile Memory while Your Process is Running	73
Access Product Release Notes	75
Additional Resources	76

---

**IMPORTANT** Throughout this publication, the following applies:

**ControlNet Communication Modules**

- References to the 1756-CN2/B modules also apply to the 1756-CN2R/B, and 1756-CN2RXT/B modules.
  - References to the 1756-CN2/C modules also apply to the 1756-CN2R/C, 1756-CN2RXT/C, and 1756-CN2RK/C, modules.
  - Catalog numbers 1756-RM, 1756-RM2 and 1756-RM2XT refer any series modules.
- 

## Product Release Notes

Product release notes for the individual products that are part of this ControlLogix Enhanced Redundancy bundle are available online within the Product Compatibility and Download Center.

For example, you can access release note information specific to the 1756-EN2T ControlLogix EtherNet/IP bridge module.

For more information on product release notes, see [page 75](#).

## About This Redundancy Firmware Bundle

This enhanced redundancy firmware bundle, identified as revision 16.081\_kit5, contains series and firmware revisions for each of the modules listed in [Table 1, Required Series and Firmware Revisions for Components Used in an Enhanced Redundancy System, Revision 16.081\\_kit5 on page 3](#).

You can download the firmware bundle at the Product Compatibility and Download Center:

<http://www.rockwellautomation.com/rockwellautomation/support/pcdc.page?>

Information that has been added or changed since the last revision of this publication is indicated by a change bar as shown next to this paragraph. In addition to information specific to the most recent firmware revision, the information from previous minor revisions is retained in these release notes.

We strongly recommend that you review the information provided regarding previous firmware revisions. We recommend that you do so because if you are upgrading your firmware through multiple previous revisions, all of the information specific to all of the revisions is applicable.

**IMPORTANT** When designing, installing, and operating the redundant chassis pair for this enhanced redundancy system revision, you can use only the modules specified in [Table 1, Required Series and Firmware Revisions for Components Used in an Enhanced Redundancy System, Revision 16.081\\_kit5 on page 3](#).

Also, keep in mind the series and firmware revision requirements listed **apply only to components used in the redundant chassis pair**, not to components used with the redundancy system outside the redundant chassis pair.

This enhanced redundancy system revision includes support using the 1756-CN2/C, 1756-CN2R/C, 1756-CN2RXT/C, 1756-CN2RK/C modules with firmware revision 25.005

**Table 1 - Required Series and Firmware Revisions for Components Used in an Enhanced Redundancy System, Revision 16.081\_kit5**

Cat. No.	Module Description	Series	Firmware Revision
1756-CN2	ControlLogix® ControlNet bridge module	B	20.011
1756-CN2R	ControlLogix redundant ControlNet bridge module	B	
1756-CN2RXT	ControlLogix-XT™ redundant ControlNet bridge module	B	
1756-CN2 <sup>(1)</sup>	ControlLogix® ControlNet bridge module	C	25.005
1756-CN2R <sup>(1)</sup>	ControlLogix redundant ControlNet bridge module	C	
1756-CN2RXT <sup>(1)</sup>	ControlLogix-XT™ redundant ControlNet bridge module	C	
1756-CN2RK <sup>(1)</sup>	ControlLogix redundant ControlNet bridge (conformal coated) module	C	
1756-EN2T	ControlLogix EtherNet/IP bridge module	D	10.007 <sup>(2) (3)</sup>
		C or earlier	2.007 <sup>(4)</sup>
1756-EN2TXT	ControlLogix-XT EtherNet/IP bridge module	D	10.007 <sup>(2) (3)</sup>
		C or earlier	2.007 <sup>(4)</sup>
1756-EN2TK	ControlLogix EtherNet/IP conformal coated communication bridge module	D	10.007 <sup>(2) (3)</sup>
1756-L61	ControlLogix5561 controller	Any	16.081
1756-L62	ControlLogix5562 controller		
1756-L63	ControlLogix5563 controller		
1756-L63XT	ControlLogix-XT controller		
1756-L64	ControlLogix5564 controller		

**Table 1 - Required Series and Firmware Revisions for Components Used in an Enhanced Redundancy System, Revision 16.081\_kit5**

Cat. No.	Module Description	Series	Firmware Revision
1756-RM2	ControlLogix redundancy module	Any	20.005
1756-RM2XT	ControlLogix-XT redundancy module		
1756-RM	ControlLogix redundancy module	Any	2.005
1756-RMXT	ControlLogix-XT redundancy module		

- (1) **IMPORTANT:** The 1756-CN2/C, 1756-CN2R/C, 1756-CN2RXT/C, 1756-CN2RK/C modules do not support firmware revisions previous to revision 25.004. Do not attempt to flash the firmware to earlier revisions. The 1756-CN2/C, 1756-CN2R/C, 1756-CN2RXT/C, and 1756-CN2RK/C modules are digitally-signed.
- (2) **IMPORTANT:** The 1756-EN2T/D modules do not support firmware revisions previous to revision 10.006. Do not attempt to flash the firmware to earlier revisions.
- (3) Firmware revision 10.006 and later is digitally-signed. For more information on digitally-signed firmware, see [page 4](#).
- (4) **IMPORTANT:** The 1756-EN2T/C (or earlier) modules do not support firmware revision 10.006 or greater. Do not attempt to flash the firmware to revision 10.006 or greater.

## 1756-EN2T Modules Digitally-signed Firmware

Digitally-signed firmware provides additional security over the unsigned firmware. This firmware is different based on the EtherNet/IP modules you use.

- 1756-EN2T/D modules - Support only firmware revision 10.007 in this enhanced redundancy system bundle. This firmware revision is digitally-signed.
- 1756-EN2T/C (or earlier) modules - Support only firmware revision 2.007 in this enhanced redundancy system bundle. This firmware revision is unsigned.

---

**IMPORTANT** When you install the digitally-signed firmware, that is, firmware revision 5.028, into a 1756-EN2T/C (or earlier), the installation makes the module incompatible with some firmware revisions.

For example, after upgrading firmware, the module supports use of only digitally-signed firmware. Any unsigned firmware updates are rejected by the module.

---

You can download the enhanced redundancy system, revision 16.081\_kit5 firmware bundle at the Product Compatibility and Download Center: <http://www.rockwellautomation.com/rockwellautomation/support/pcdc.page>.

The firmware bundle is identified as V16.081\_kit5.

## Compatible Software Versions

Use these versions of software with this redundancy firmware bundle.

**Table 2 - Required Software Versions for Enhanced Redundancy System, Revision 16.081\_kit5**

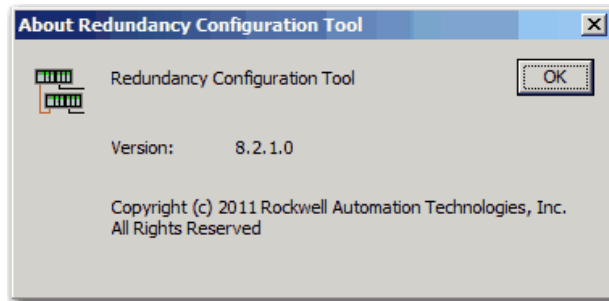
Software	Version
ControlFLASH™	12.00.01
FactoryTalk® Services Platform	2.10.01 (CPR 9, SR1) <sup>(1)</sup>
FactoryTalk Alarms and Events	2.10.00 (CPR 9)
FactoryTalk Batch	10.00.26
FactoryTalk View Site Edition	5.00.00 (CPR 9)
Redundancy Module Configuration Tool	8.02.01
RSLinx® Enterprise	5.17 (CPR 9, SR1)
RSLinx Classic	2.54 <sup>(2)</sup>
RSLogix™ 5000	16.04
RSNetWorx™ for ControlNet	9.00

- (1) Use the most recent FactoryTalk Services Platform Patch Roll-up with this redundancy firmware revision. For the most recent patch roll-up, see Rockwell Automation Knowledgebase Answer ID 56184, accessible at: <http://www.rockwellautomation.com/knowledgebase/>.
- (2) If your redundant system is comprised of ControlLogix-XT modules placed in a 1756-ASXT chassis, RSLinx Classic software, version 2.55, or later, is required.

## About the Redundancy Module Configuration Tool

You can use 1756-RM redundancy modules to commission a redundant system. These modules operate in a plug-and-play manner, that is, they can commission a system without any additional programming. However, there is additional functionality available if you use the modules with the Redundancy Module Configuration Tool (RMCT).

This enhanced redundancy system revision requires the RMCT, version 8.02.01. The About screen for the RMCT displays 8.2.1.0 but it's the correct version.



You can use the RMCT with the redundancy modules to complete these tasks:

- View error diagnostics
- View partnered modules' qualification and compatibility status
- Set Auto-Synchronization parameters

- View and set Chassis ID parameters (Chassis A, Chassis B)
- Identify noncompliant modules for removal
- Configure redundancy system parameters

---

**IMPORTANT** This publication documents [Corrected Anomalies](#) and [Known Anomalies](#) associated with the RMCT. We recommend that you read these anomaly descriptions before using the RMCT, version 8.02.01.

Also, if you need to upgrade your RMCT separately from downloading this enhanced redundancy system revision or by using RSLinx Classic software, version 2.59.00, see [Upgrade the Redundancy Module Configuration Tool \(RMCT\) on page 30](#).

---

RSLinx Classic software includes the RMCT, however, it is not likely to be the version that is compatible with this firmware revision. Complete these steps to obtain the compatible version of the RMCT.

1. Access Knowledgebase Answer ID 29511 (available at: <http://www.rockwellautomation.com/knowledgebase/>).
2. Download the version listed for this redundancy firmware revision.

You can find this information at the Product Compatibility and Download Center at <http://www.rockwellautomation.com/support/downloads.html>.

3. Open the executable file and use the Installation Wizard to install the tool.

For information about checking the version of your RMCT, see [Upgrade the Redundancy Module Configuration Tool \(RMCT\) on page 30](#).

## Enhancements

These enhancements are provided with enhanced redundancy system, revision 16.081\_kit5.

**Table 3 - Enhancements Provided with Enhanced Redundancy System, Revision 16.081\_kit5**

System Component	Enhancement
1756-CN2, 1756-CN2R, 1756-CN2RXT, 1756-CN2RK	The 1756-CN2, 1756-CN2R, 1756-CN2RXT, and 1756-CN2RK modules are available with firmware revision 25.005 in this enhanced redundancy bundle.

These enhancements have been made in previous firmware revisions.

**Table 4 - Enhancements Provided with Enhanced Redundancy System, Revision 16.081\_kit4 (or earlier)**

System Component	Enhancement
1756-CN2/C support	The 1756-CN2, 1756-CN2R, 1756-CN2RXT, and 1756-CN2RK modules are available with firmware revision 25.004 in this enhanced redundancy bundle.
1756-RM2 firmware	Upgraded Firmware Revision The 1756-RM2 and 1756-RM2XT modules use firmware to revision 20.005 in this enhanced redundancy bundle.
Redundancy Module Configuration Tool	The RMCT has been revised to version 8.02.01.
ControlLogix EtherNet/IP module, 1756-EN2T/D	Upgraded Firmware Revision The 1756-EN2T/D module uses firmware revision 10.007 in this enhanced redundancy bundle.  Product Resiliency Improvement This release includes enhancements intended to improve product resiliency to potentially disruptive activities. These enhancements have been verified to not affect product safety, performance, expected life, configuration, or operation of the product. Rockwell Automation advises customers to follow good Industrial Control System (ICS) security practices that include regular product updates. To ensure authenticity, obtain product updates and new releases directly from Rockwell Automation.
ControlLogix EtherNet/IP module, 1756-EN2T/D	The 1756-EN2T/D modules, firmware revision 10.006, are available. <b>IMPORTANT:</b> The 1756-EN2T/D modules do not support firmware revisions previous to revision 10.006. Do not attempt to flash the firmware to previous revisions.  With the 1756-EN2T/D module, firmware revision 10.006, message performance is improved over earlier revisions.
Redundancy Module Configuration Tool (RMCT), 1756-RM2, 1756-RM2XT	Automatic Export The Export All button on the Event Log tab lets all of the event log records and internal diagnostic data from both redundancy modules in the chassis pair to be collected automatically.  Major Fault Recovery The redundancy module can now communicate on the backplane for most of its major fault conditions. When the redundancy module is in Major Fault state but communicating on the backplane, the OK status indicator flashes red and the module display shows the 4-character error code. The Clear Fault button on the Event Log tab automatically becomes active as soon as a major fault occurs on the redundancy module. The Module Info tab shows the fault code and associated information. You can click the Clear Fault button to clear the fault without removing and reinserting the module. Once the fault is cleared, the redundancy module automatically restarts and enters a primary or secondary state.  Redundant fiber ports for the 1756-RM2 module for crossloading; no single point of failure of a fiber cable.  Addition of the 1756-RM2 and 1756-RM2XT redundancy modules.  The 1756-RM2 module is interference-free with regard to safety functions and can be used in ControlLogix SIL2 applications.  During a switchover of the fiber channels on the 1756-RM2 module, the chassis remains synched at all times. (Scan time can encounter a delay of ~10 ms or less during this fiber channel switchover.)
1756-L61, 1756-L62, 1756-L63, 1756-L63XT, 1756-L64	The false execution time of Add-On Instructions have been improved. With previous revisions, the false execution time of an Add-On Instruction was dependent on the number of parameters (input, output, and inout) configured for the instruction. The more parameters configured, the longer the false execution time of the Add-On Instruction. With this revision, the false execution time of an Add-On Instruction is now constant if a scan false routine is not created. To determine the false execution time of Add-On Instructions based on your controller, reference the values published in the Logix5000™ Controllers Execution Time and Memory Use Reference Manual, publication <a href="#">1756-RM087</a> .

Lgx00106477

**Table 4 - Enhancements Provided with Enhanced Redundancy System, Revision 16.081\_kit4 (or earlier) (Continued)**

System Component	Enhancement																
1756-L61, 1756-L62, 1756-L63, 1756-L63XT, 1756-L64	<p>Support for redundant controller use with alarm features of FactoryTalk Alarms and Events software.</p> <p>This redundancy firmware revision provides support for alarms as supported by FactoryTalk Alarms and Events software. Alarms can now be embedded in the controller with two new instructions, ALMD and ALMA, available in RSLogix 5000 software. These digital and analog alarm instructions are fully self-contained.</p> <hr/> <p>Support for redundant controller use with equipment phases.</p> <p>This redundancy firmware revision provides support for equipment phases that can be implemented by using FactoryTalk Batch software and the RSLogix 5000 PhaseManager™ feature. See the <a href="#">Application Notes on page 18</a> for more information about using a redundant system and equipment phases.</p>																
1756-RM, 1756-RMXT	<p>Auto-qualification and synchronization processes of the 1756-RM module are stopped after a chassis pair first fails to synchronize.</p> <p>In previous firmware revisions, if the Auto-Qualification parameter is set to Always and the controller in the secondary chassis faulted, or a communication module was removed from the chassis, the 1756-RM module continuously attempted to qualify the redundant chassis. As a result of the continuous attempts to qualify, the event logs became filled with synchronization failure events, thus making the originating fault more difficult to troubleshoot. With this firmware enhancement, the 1756-RM module stops auto-qualification and synchronization attempts after the first fault occurs. This makes troubleshooting the original fault easier.</p> <p style="text-align: right;">Lgx00080574</p> <hr/> <p>Synchronization failure reports enhanced by adding 'Partner Module not Found' cause.</p> <p>In previous revisions, if synchronization failed due to partner modules being at incompatible firmware revisions or a secondary module was not installed or powered, then failure was indicated by the same cause statement in the synchronization log of the RMCT. For both types of failures, 'Module Pair Incompatible' was indicated as the cause.</p> <p>With this firmware revision, the 1756-RM module can differentiate between partner incompatibilities and a missing secondary module. The RMCT indicates a missing secondary module by stating 'Partner Module not Found' in the Cause column of the Recent Synchronization Attempts log.</p> <div data-bbox="415 940 1360 1188" style="border: 1px solid gray; padding: 5px;"> <p>Recent Synchronization Attempts:</p> <table border="1" style="width: 100%; border-collapse: collapse;"> <thead> <tr> <th>Order</th> <th>Result</th> <th>Cause</th> </tr> </thead> <tbody> <tr> <td>N</td> <td>Abort</td> <td>Partner Module not Found</td> </tr> <tr> <td>N-1</td> <td>Success</td> <td>—</td> </tr> <tr> <td>N-2</td> <td>Abort</td> <td>Module Pair Incompatible</td> </tr> <tr> <td>N-3</td> <td>Abort</td> <td>Module Pair Incompatible</td> </tr> </tbody> </table> <p style="margin-left: 150px;"> <span style="font-size: small;">Module is not installed or powered in chassis.</span>  <span style="font-size: small;">Modules are at different firmware revisions.</span> </p> </div> <p style="text-align: right;">Lgx00083165</p>	Order	Result	Cause	N	Abort	Partner Module not Found	N-1	Success	—	N-2	Abort	Module Pair Incompatible	N-3	Abort	Module Pair Incompatible	
Order	Result	Cause															
N	Abort	Partner Module not Found															
N-1	Success	—															
N-2	Abort	Module Pair Incompatible															
N-3	Abort	Module Pair Incompatible															
1756-RM, 1756-RMXT	<p>The timestamps of Lock for Update and Initiate Locked Switchover commands are more precise.</p> <p>In previous firmware revisions, when the redundant system was locked for an update or a locked switchover was initiated, the 1756-RM module indicated the same time for the both the initiation and completion of those commands.</p> <p>With this revision, the initiation and completion of each these commands is timestamped accordingly and the difference in time between initiation and completion can be observed.</p> <div data-bbox="370 1415 1461 1692" style="border: 1px solid gray; padding: 5px;"> <p>System Update Lock Attempts</p> <table border="1" style="width: 100%; border-collapse: collapse;"> <thead> <tr> <th>System Lock History</th> <th>Initiation Time</th> <th>Status</th> <th>Result</th> </tr> </thead> <tbody> <tr> <td>N</td> <td>6/3/2009 08:11:18:989</td> <td>In Progress</td> <td>Lock for update initiated at :6/3/2009 08:11:18:989</td> </tr> </tbody> </table> <p style="text-align: center; margin: 5px 0;">↓</p> <p>System Update Lock Attempts</p> <table border="1" style="width: 100%; border-collapse: collapse;"> <thead> <tr> <th>System Lock History</th> <th>Initiation Time</th> <th>Status</th> <th>Result</th> </tr> </thead> <tbody> <tr> <td>N</td> <td>6/3/2009 08:11:18:989</td> <td>Locked</td> <td>System locked at :6/3/2009 08:11:50:680</td> </tr> </tbody> </table> </div> <p style="text-align: right;">Lgx00083167</p>	System Lock History	Initiation Time	Status	Result	N	6/3/2009 08:11:18:989	In Progress	Lock for update initiated at :6/3/2009 08:11:18:989	System Lock History	Initiation Time	Status	Result	N	6/3/2009 08:11:18:989	Locked	System locked at :6/3/2009 08:11:50:680
System Lock History	Initiation Time	Status	Result														
N	6/3/2009 08:11:18:989	In Progress	Lock for update initiated at :6/3/2009 08:11:18:989														
System Lock History	Initiation Time	Status	Result														
N	6/3/2009 08:11:18:989	Locked	System locked at :6/3/2009 08:11:50:680														



**Table 4 - Enhancements Provided with Enhanced Redundancy System, Revision 16.081\_kit4 (or earlier) (Continued)**

System Component	Enhancement
1756-L61, 1756-L62, 1756-L63, 1756-L63XT, 1756-L64	<p>Firmware revision 16.054 provides redundancy support for controller programming with Add-On Instructions.</p> <p>Synchronization points for programs within the RSLogix 5000 project can be configured.</p> <p>Redundancy firmware revision 16.054 provides the ability to limit the programs that are followed by synchronization and data crossloading. In many applications, changing this can reduce the overall impact to the task scan time by reducing the number of times a data area is synchronized. Removing a synchronization point results in 1 ms of overhead time saved.</p> <p>However, reducing the number of synchronization points can delay the switchover time because more programs may need to be re-scanned by the new primary controller as it starts at the last synchronization point.</p> <p>Synchronization is performed at the end of the last program in the task's program list, regardless of the program's Synchronize Data after Execution setting. To change the synchronization setting of a program, access the program's Program Properties dialog box and check or uncheck Synchronize Data after Execution.</p>
1756-L64	The ControlLogix5564 controller is supported for use in the redundant system with this firmware revision.
Redundancy Module Configuration Tool (RMCT)	<p>System Event History accessible via the Redundancy Module Configuration Tool (RMCT).</p> <p>A System Event History tab is available in the RMCT and is visible only when the session is launched while online with the 1756-RM module. This feature automatically captures key events occurring in the redundant system that explain why a switchover occurred or why redundancy was lost.</p> <p>Certain events also indicate what caused the chassis pair to become synchronized. There are 10 most recent entries available for viewing. Each entry has a user comment attached to it that can be used to enter system maintenance information.</p> <p>For more details, see the online help of the RMCT.</p> <p style="text-align: right;">Lgx00073250</p>
	<p>Event Log provides additional module information.</p> <p>The 1756-RM module is able to report any changes in the application firmware revision and the backplane serial number via entries posted to the Event Log. This information indicates that a firmware upgrade took place and whether the chassis location of the 1756-RM module was changed.</p> <p style="text-align: right;">Lgx00073278</p>
	<p>The Synchronization Status tab provides module type and firmware revision data.</p> <p>Within the RMCT, the Synchronization Status tab displays the product-name string and firmware revision of redundancy-compliant modules in the chassis.</p> <p style="text-align: right;">Lgx00073729</p>
1756-RM, 1756-RMXT	<p>User-identity parameters are retained through a power-cycle.</p> <p>The user identity parameters are now 64 characters in length and are stored in nonvolatile memory of the 1756-RM modules. The parameters are saved to nonvolatile memory whenever a change is made.</p> <p style="text-align: right;">Lgx00073247</p>
	<p>The qualification state of the redundant chassis pair is indicated on the module status display.</p> <p>The 1756-RM module in the secondary chassis displays a 'QFNG' 4-character code when the redundant chassis pair is qualifying for synchronization.</p> <p style="text-align: right;">Lgx00073276</p>
	<p>The primary 1756-RM module is the Wall Clock Time (WCT) master for the secondary 1756-RM module.</p> <p>The 1756-RM module in the primary chassis is the master of the currentTime attribute of the WCT object. When a secondary 1756-RM module is connected, the currentTime attribute in the primary 1756-RM module is copied over to the secondary 1756-RM module to make them the same. The currentTime attribute on the secondary 1756-RM module is synchronized every second.</p> <p style="text-align: right;">Lgx00073248</p>
	<p>The 1756-RM module can be accessed when in a major fault state.</p> <p>In some applications, it is possible to communicate with the 1756-RM module even if it has already experienced a major nonrecoverable fault. This lets the fault code to be read remotely and facilitates the retrieval of event logs while in the faulted state.</p> <p style="text-align: right;">Lgx00073258</p>

## Corrected Anomalies

The following sections describe anomalies that are corrected in enhanced redundancy system revisions.

### Corrected Anomalies with Revision 16.081\_kit5

These anomalies have been corrected in enhanced redundancy system, revision 16.081\_kit5.

**Table 5 - Corrected Anomalies in Enhanced Redundancy System, Revision 16.081\_kit5**

Cat. No./System Component	Enhanced Redundancy System Revision	Description
1756-CN2/C 1756-CN2R/C 1756-CN2RXT/C 1756-CN2RK	16.081_kit5	<p><b>CORRECTED:</b> When the second power supply of a redundant power supply pair powers up, ControlNet interface modules that reside in the same chassis experience an overvoltage condition. The 5V power rail on the interface module briefly exceeds the maximum voltage setting in the Voltage Monitoring System (VMS). Lgx00158735</p> <p><b>CORRECTED:</b> The Redundancy System Update feature takes several minutes to report that a secondary module with an earlier firmware revision is paired with a primary module that has more recent firmware. Lgx00155142</p>

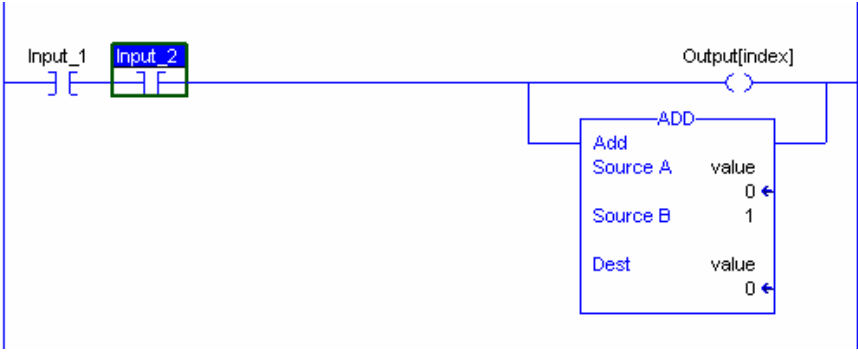
### Corrected Anomalies with Revision 16.081\_kit4 (or earlier)

These anomalies have been corrected with enhanced redundancy system, revision 16.081\_kit4 (or earlier).

**Table 6 - Corrected Anomalies with Enhanced Redundancy System, Revision 16.081\_kit4 (or earlier)**

System Component	Description
1756-L61, 1756-L62, 1756-L63, 1756-L63XT, 1756-L64	<p>A Digital Alarm (ALMD) configured to trigger when the input condition of the alarm is false, does not trigger if the alarm condition is false when you conduct a download or return to run mode.</p> <p>When the Condition parameter of the ALMD instruction is not set (that is, Input = 0) <b>and</b> either the program has recently been downloaded to the controller, or the controller has been changed from Run to Program and back to Run mode, the alarm is not activated (that is, the InAlarm bit is not set).</p> <p>These behaviors can result, depending on your application:</p> <ul style="list-style-type: none"> <li>• Programming designed to respond to the activated alarm is not executed.</li> <li>• Messages designed to be indicated at the operator station in response to the activated alarm are not indicated.</li> <li>• The alarm's history log does not indicate that the alarm was activated.</li> </ul> <p>If you do not upgrade to this revision, you must toggle the Condition parameter from set (that is, Input = 1) to not set (that is, Input = 0) to activate the alarm.</p> <p>If your Condition parameter is set, then the alarm activates as expected after a download or change to the controller mode.</p> <p style="text-align: right;">Lgx000103444</p>

**Table 6 - Corrected Anomalies with Enhanced Redundancy System, Revision 16.081\_kit4 (or earlier) (Continued)**

System Component	Description
1756-L61, 1756-L62, 1756-L63, 1756-L63XT, 1756-L64	<p>Fault handlers can be defined at the controller and program scope levels. These fault handlers are typically used to handle major recoverable faults that can occur during runtime execution of an application due to programming errors. A typical example of this is handling indirect addressing that has gone out of range; MyTag[index], where index is larger than the size of the array.</p> <p>Faults can also be handled by the controller during pre-scan of the controller program on the transition to Run mode. Again, for example, the handling of indirect addressing that has gone out of range.</p> <p>There is an anomaly when these methods attempt to handle a fault.</p> <p>These are the possible ways the anomaly can manifest itself:</p> <ul style="list-style-type: none"> <li>• The controller experiences a major non-recoverable fault. I/O goes to their configured safe state, and the user application is cleared from memory. At this point, a Code 1 Type 60 or 61 major recoverable fault is logged in the controller. This requires you to redownload the application.</li> <li>• Tag data corruption.</li> <li>• Online saving or uploading failures.</li> <li>• Anomalous program execution.</li> </ul> <p>For example, if a rung is being scanned false and there is an instruction that has false execution, the fault handler executes so the remainder of the rung scans true. In the example below, the OTE instruction has an index out of range. After returning from the fault handler, the ADD instruction executes, even though the rung input conditions are false.</p>  <p>Only on redundancy systems, when the fault handler or power-up handler contains an Add-On Instruction, the new primary controller can fault with a major non-recoverable fault on the second switch-over. These fault conditions can leave the redundancy system without a running primary controller.</p> <p>Lgx00106481, Lgx00107423, Lgx00100766, Lgx00106478</p>
1756-CN2, 1756-CN2R, 1756-CN2RXT	<p>The 1756-CN2/B module cannot use a ControlNet network address of 96, or greater, in a redundant chassis pair. If you set the switches on the 1756-CN2/B module to 96 or greater, and place it in a secondary chassis, the module faults.</p> <p>With this firmware revision, the node address switches of the ControlNet module in the secondary chassis can be set at an address of 98, or less.</p> <p>Lgx00082110</p> <p>A connection closing during phase two of redundant chassis qualification results in a synchronization failure.</p> <p>With this firmware revision, a connection closing during qualification does not cause a synchronization failure.</p> <p>Lgx00092857</p> <p>Attempts to use the ControlNet bridge modules on an unconfigured ControlNet network results in a failure to qualify and synchronize the redundant chassis.</p> <p>With this firmware revision, ControlNet modules in a redundant chassis can qualify and synchronize when the ControlNet network is not scheduled.</p> <p>Lgx00091856</p> <p>After an event on a 1756-CN2 or 1756-CN2R module causes disqualification of the redundant chassis pair, the secondary chassis continues to appear to be synchronized for up to 30 seconds after the disqualifying event. Even though the redundant chassis pair does not indicate disqualification immediately, the PartnerChassisRedundancyState attribute immediately indicates that no partner is present.</p> <p>During the delayed disqualification, a switchover cannot successfully occur.</p> <p>With this firmware revision, the secondary chassis disqualifies without delay.</p> <p>Lgx00090120</p>
1756-CN2, 1756-CN2R, 1756-CN2RXT	<p>Upon powerup, the OK status indicator of the 1756-CN2 or 1756-CN2R modules can be red and the module status display indicates either:</p> <ul style="list-style-type: none"> <li>• CmdConnOpen.cpp Line 630.</li> <li>• RMEventLog.cpp Line 841.</li> </ul> <p>This is a result of the ControlNet module inaccurately detecting the size of the redundant chassis.</p> <p>With this firmware revision, the correct chassis size is accurately detected.</p> <p>Lgx00082907</p>

**Table 6 - Corrected Anomalies with Enhanced Redundancy System, Revision 16.081\_kit4 (or earlier) (Continued)**

System Component	Description
1756-EN2T	<p>After a power cycle switchover and HMI loading, CIP Sync functions of the 1756-EN2T module fail when used in a redundancy system. Rarely, the 1756-EN2T module can powerup and not synchronize CIP Sync time to the grandmaster or can synchronize with an incorrect time. With this firmware revision, the CIP Synch time of the 1756-EN2T module synchronizes with the grandmaster on powerup.</p> <p style="text-align: right;">Lgx00083465, Lgx00082870</p>
	<p>As a result of a delayed 1756-EN2T module-response, the 1756-RM module failed and indicated communication error EAE8 after power to the redundant chassis was cycled. With this firmware revision, no delayed response of the 1756-EN2T module occurs.</p> <p style="text-align: right;">Lgx00079052</p>
	<p>The 1756-EN2T module refuses all outbound connections via the Ethernet port. After cycling power on the Ethernet switch or router that the 1756-EN2T module is connected to, the 1756-EN2T module can become unresponsive. The affected module does not respond to Ethernet network, backplane, or USB traffic, even though the status indicators remain green and the status display shows no errors. With this revision, the 1756-EN2T module maintains outbound connections.</p> <p style="text-align: right;">Lgx00081018</p>
	<p>After a switchover, the new primary 1756-EN2T module resets if the partnered 1756-EN2T module that was the primary is faulted. This can result in a slight delay of the new primary chassis taking control. With this firmware revision, if the primary 1756-EN2T module is faulted, the partnered 1756-EN2T module becomes the new primary without resetting and the delay in the new primary chassis taking control cannot occur.</p> <p style="text-align: right;">Lgx00082818</p>

**Table 6 - Corrected Anomalies with Enhanced Redundancy System, Revision 16.081\_kit4 (or earlier) (Continued)**

System Component	Description
1756-L61, 1756-L62, 1756-L63, 1756-L63XT, 1756-L64	After a redundant system is synchronized, if the secondary controller is removed or is faulted, the primary 1756-RM module faults with an E054 error code. Removing and reinserting the primary 1756-RM module re-initiates qualification and resolves the error. <span style="float: right;">Lgx00083316</span>
	When an Add-On Instruction is used in the Power-Up Handler or Controller Fault Handler routines, a major nonrecoverable fault (MNRf) occurs on the new primary after two switchovers. <span style="float: right;">Lgx00088390</span>
	When redundant controllers are used to produce data communicated on a ControlNet network, at a switchover the produced data reverts to an earlier value until the next requested-packet interval (RPI) after an output scan occurs. <span style="float: right;">Lgx00090100</span>
	Redundant chassis synchronization fails when ControlLogix controllers are used in a redundant system where the redundant controller is consuming data produced by a GuardLogix controller. <span style="float: right;">Lgx00091317</span>
	After a switchover, an Add-On Instruction stack overflow error occurs on the new primary controller. This anomaly can occur when: <ul style="list-style-type: none"> <li>• Add-On Instructions are used in the continuous task.</li> <li>• The 'During unused System Overhead Time Slice' parameter (specified in the Controller Properties dialog box, Advanced tab) is set to 'Reserve for System Tasks, eg Communications'.</li> </ul> <span style="float: right;">Lgx00093699</span>
	If a redundant controller is producing data to a consuming controller in the same redundant chassis, when a switchover or a locked switchover occurs, the produced data reverts to an earlier value until the next requested-packet interval (RPI) <b>after</b> an output scan occurs. <span style="float: right;">Lgx00090167, Lgx00091180</span>
	A block-transfer message error 16#301 occurs for an extended time period after a successful switchover. This anomaly occurs when the 1756-L6x controller is programmed with a block transfer of data to analog I/O via a 1756-DHRIO module. <span style="float: right;">Lgx00092774</span>
1756-RM, 1756-RMXT	At times, the 1756-RM module status display can go blank soon after power is applied to the chassis. In addition, the OK status indicator stays solid red. Attempts to access the 1756-RM module via the backplane are unsuccessful and communication via the fiber-optic cable does not occur. Other modules in the chassis powerup as though in a nonredundant chassis. <span style="float: right;">Lgx00082630</span>
	The 1756-RM module can log minor faults E8AC and E2WZ after the chassis pair is already synchronized. This minor fault codes occur rarely and are logged solely for information purposes - they do not indicate noteworthy problems with the system. <span style="float: right;">Lgx00080482, Lgx00097734</span>
	While synchronized, 1756-RM module can fault with an error EA84 or EA28 on switchover. If the Ethernet cable to a synchronized and primary 1756-EN2T module is broken or damaged, the 1756-RM module can fault with an error EA84 or EA28 fault code. However, a switchover successfully executes. <span style="float: right;">Lgx00084385</span>
	Repeatedly disconnecting and connecting the fiber-optic cable while the redundant chassis pair is qualifying causes the 1756-RM modules to fault. Fault codes that can be indicated are E0Ix fault codes. <span style="float: right;">Lgx00084595</span>
	Comments cannot be added to older events in the System Event History tab. In the System Event History tab, commented entries already saved to nonvolatile memory cannot be edited. However, new events generated (after the last attempt to save to nonvolatile memory) can be edited. <span style="float: right;">Lgx00084176</span>
	After completing a firmware upgrade to either the 1756-CN2 or 1756-EN2T modules, an error EK24 is indicated by the redundancy module and the redundant chassis fails to qualify. <span style="float: right;">Lgx00076384</span>
	After a power cycle, the 1756-RM module occasionally remains in Test mode as indicated by the module status display continuously indicating THG1. In addition to THG1 indicated on the module status display, the controller reports a '(Type 03) I/O Fault (Code 20) Unable to read ControlBus chassis' error. Also, if the 1756-RM module that remains in Test mode is in the secondary chassis, then the communication modules in both chassis indicate a duplicate node. <span style="float: right;">Lgx00080649</span>

**Table 6 - Corrected Anomalies with Enhanced Redundancy System, Revision 16.081\_kit4 (or earlier) (Continued)**

<b>System Component</b>	<b>Description</b>
1756-RM, 1756-RMXT	<p>After applying power to the redundancy module, the OK indicator is steady red and the module status display does not provide any indication of the module status (that is, the module status display is blank). Power-up processes of the redundancy module are not carried out and the module's Event Log does not indicate that power-up processes have been initiated.</p> <p style="text-align: right;">Lgx00081559</p>
	<p>Repeated attempts to automatically synchronize redundant chassis after certain qualification checkpoints can cause the primary 1756-RM module to fault as indicated by the:</p> <ul style="list-style-type: none"> <li>• Steadily red OK indicator.</li> <li>• Blank module status display.</li> <li>• Major faults EG1G and EG1a indicated in the Event Log.</li> </ul> <p style="text-align: right;">Lgx00087889</p>
	<p>The 1756-RM module indicates that the primary modules are not compatible with secondary modules and the redundant chassis fail to qualify. This occurs after multiple modules within the primary chassis received firmware upgrades at the same time, or nearly the same time.</p> <p style="text-align: right;">Lgx00083164</p>
	<p>The 1756-RM module indicates error code E010 after attempts to complete online edits while synchronized. This anomaly can occur when multiple programs are used and:</p> <ul style="list-style-type: none"> <li>• Inhibited programs are uninhibited.</li> <li>• Synchronization and crossloading is not carried out at the end of each of the inhibited programs.</li> </ul> <p style="text-align: right;">Lgx00090176</p>
	<p>Editing any parameters of the User-Defined Identity within a few seconds of disqualification or a switchover results in the synchronization status changing to incompatible.</p> <p style="text-align: right;">Lgx00091144</p>
	<p>After running in the synchronized state for several days, a 1756-RM module of the pair can fault and indicate error code E8A0. The system-response to the fault depends on the location of the 1756-RM module. If the faulted 1756-RM module is in the:</p> <ul style="list-style-type: none"> <li>• Primary chassis, a switchover occurs</li> <li>• Secondary chassis, disqualification occurs</li> </ul> <p>To restore redundancy, remove and reinsert the faulted 1756-RM module. Then, synchronize the chassis.</p>

## Known Anomalies

This table lists the known anomalies applicable to the enhanced redundancy system, revision 16.081\_kit5 (or earlier).

**Table 7 - Known Anomalies with Enhanced Redundancy System, Firmware Revision 16.081\_kit5 (or earlier)**

System Component	Description
1756-EN2T, 1756-EN2TR, 1756-EN2TXT	<p>You cannot have kits with firmware revisions 10.006 and 10.007 installed on the same computer. If you have firmware revision 10.006 installed and you attempt to install firmware revision 10.007, 10.007 generates an error directing to an incorrect .nvs file. Reinstall the desired firmware revision and ignore the error. We recommend using Firmware revision 10.007 because it has corrected anomalies from firmware revision 10.006.</p> <p style="text-align: right;">Lgx00155450</p>
1756-L61, 1756-L62, 1756-L63, 1756-L63XT, 1756-L64	<p>Redundant chassis synchronization fails when a large number of controller connections are used.</p> <p>Chassis synchronization can fail if the controller is near its connection limits. To reduce the likelihood of this anomaly, verify that you use controller connections within the limits of the controller and that at least eight controller connections are reserved for the redundant system. Try to limit the number of controllers connections used to 243 connections, or less.</p> <p>Alarms scanned during the continuous task can be published to the alarm server twice after a switchover.</p> <p>If a switchover occurs and a continuous task that contains alarm instructions is scanned twice as a result, a duplicate 'out of scope' alarm entry can be indicated in the alarm summary object. To clear 'out of scope' entries, click Refresh alarm list.</p> <p>Alarm status messages can be duplicated in the Alarm History Log in the event of a switchover.</p> <p>To make troubleshooting duplicate alarm states easier, consider programming alarms to indicate when a redundant system switchover occurs.</p> <p>Alarms that are acknowledged just before or during a switchover can be indicated as active and unacknowledged after a switchover. If this occurs, acknowledge the alarm a second time.</p> <p>If an alarm is active, then inactive, and a switchover occurs before change in the alarm state is updated to the FactoryTalk server, the FactoryTalk alarm history log may not indicate the change in alarm state.</p> <p>The alarm parameters can be lost when a switchover occurs.</p> <p>When a switchover occurs in a redundant system that uses alarms, certain alarm parameters may not be transferred to the new primary controller if the parameters have changed since the last crossload of data. Alarm parameters that may not transfer include:</p> <ul style="list-style-type: none"> <li>• DeliveryER</li> <li>• DeliveryEN</li> <li>• NoSubscriber</li> <li>• NoConnection</li> <li>• CommError</li> <li>• AlarmBuffered</li> <li>• SubscNotified</li> </ul> <p>Once the alarm data is buffered, the parameters are updated.</p> <p style="text-align: right;">Lgx00093529</p> <p>Alarms can fail to be acknowledged when the attempt to acknowledge the alarm occurs during a switchover.</p> <p>If you attempt to acknowledge an alarm while a switchover occurs, a failure to acknowledge the alarm is indicated. Attempting to acknowledge the alarm a second time is successful.</p> <p style="text-align: right;">Lgx00093826</p>
1756-EN2T, 1756-EN2TXT	<p>You cannot have firmware revisions 10.006 and 10.007 installed on the same computer. If you have firmware revision 10.006 installed and you attempt to install firmware revision 10.007, 10.007 generates an error directing to an incorrect .nvs file.</p> <p>Uninstall firmware revision 10.006 before installing 10.007 or reinstall the desired firmware revision and ignore the error.</p> <p>We recommend using Firmware revision 10.007 because it has corrected anomalies from firmware revision 10.006.</p> <p style="text-align: right;">Lgx00155450</p>

**Table 7 - Known Anomalies with Enhanced Redundancy System, Firmware Revision 16.081\_kit5 (or earlier)**

System Component	Description
1756-RM, 1756-RMXT	<p>The redundancy module fails to detect a controller in the chassis.</p> <p>Rarely, after powering the redundant chassis, the 1756-RM module is unable to detect all of the controllers placed in the chassis. When the controller fails to be detected, it goes into Run mode, even if it is in the secondary chassis. In addition, the Synchronization Status tab of the RMCT does not indicate that the missing controller is present.</p> <p>If the controller that fails to be detected is in the secondary chassis, the chassis pair fails to synchronize.</p> <p style="text-align: right;">Lgx00079417</p>
	<p>Repeated connection and disconnection of the 1756-RM modules' fiber-optic cable results in various fault codes indicated on the module status display.</p> <p>If the 1756-RM modules' fiber-optic cable is disconnected and connected repeatedly within short periods of time, the redundancy module faults and indicates error codes such as E0XX or EAXX.</p> <p>To avoid experiencing these faults, wait 5 . . . 10 seconds between disconnecting and connecting the 1756-RM modules' fiber-optic cable.</p> <p style="text-align: right;">Lgx00084595, Lgx00091960</p>
	<p>Cycling power to, or, updating the firmware of the 1756-RM module or other modules in the chassis can cause the 1756-RM module to fault and indicate error code EAM3 on the module status display.</p> <p>Rarely, after updating the firmware the 1756-RM module or any other modules in the chassis, the 1756-RM module begins logging E750 faults and eventually an EAM3 fault occurs. To recover, uninstall both the 1756-RM modules from the chassis and re-install them in the same chassis slots. Uninstalling and reinstalling only one of the modules can result in the fault appearing again.</p> <p style="text-align: right;">Lgx00094986, Lgx00099560</p>



## Restrictions

This table lists the restrictions applicable to the enhanced redundancy system, revision 16.081\_kit5 (or earlier).

**Table 8 - Restrictions with Enhanced Redundancy System, Firmware Revision 16.081\_kit5 (or earlier)**

System Component	Description
1756-CN2, 1756-CN2R, 1756-CN2RXT, 1756-CN2RK	<p>1756-CN2/B and 1756-CN2R/B module firmware is not compatible with 1756-CN2/A and 1756-CN2R/A, hardware. Do not attempt to upgrade an 1756-CN2/A or 1756-CN2R/A, module with 1756-CN2/B or 1756-CN2R/B firmware. Attempting to do so results in ControlFlash software displaying a severe incompatibility warning. Series A modules are not supported in redundancy.</p> <p>1756-CN2/C, 1756-CN2R/C, 1756-CN2RXT/C, 1756-CN2RK/C module firmware is not compatible with series A and B hardware. You cannot flash series A or B firmware on series C hardware or vice versa.</p> <p>The 1756-CN2x communication modules provide a maximum of 128 CIP connections for standard (non redundancy) application use. The 1756-CN2x communication modules provide 131 total CIP connections. However, three of the 131 CIP connections are always reserved for redundant control. These 3 redundant-system CIP connections always appear to be in use, even when no connections are open. Because 3 of the 131 CIP connections are reserved for redundancy, 128 CIP connections are available for nonredundant use.</p> <p>1756-CN2/B and 1756-CN2R/B module firmware is not compatible with 1756-CN2/A and 1756-CN2R/A, hardware. You cannot flash series A or B firmware on series C hardware or vice versa.</p> <p>1756-CN2/C, 1756-CN2R/C, 1756-CN2RXT/C, 1756-CN2RK/C module firmware is not compatible with series A and B hardware. The 1756-CN2/B and 1756-CN2R/B module firmware is not compatible with the 1756-CN2/A or 1756-CN2R/A hardware. Do not attempt to upgrade an 1756-CN2/A or 1756-CN2R/A, module with 1756-CN2/B or 1756-CN2R/B firmware. Attempting to do so results in ControlFlash software displaying a severe incompatibility warning. Series A modules are not supported in redundancy.</p>
1756-CN2	The 1756-CN2/A, module cannot be used in any redundant chassis. The 1756-CN2/A module is not redundancy compliant in either a standard or enhanced redundancy system.
1756-CN2, 1756-CN2R, 1756-CN2RXT, 1756-CN2RK, 1756-EN2T	<p>System Event Entry contains a module failure event when an enhanced communication module is inserted. The System Event History displays a `Module Failure` entry when you insert a 1756-CN2/B, or 1756-CN2/C module, or a 1756-EN2T module in the chassis while the redundant chassis pair is synchronized. This is not indicative of any module failure, instead it only indicates that an enhanced communication module was inserted in the chassis.</p> <p style="text-align: right;">Lgx00078874</p>
1756-EN2T	<p>Do not use 1756-EN2T modules at firmware revision 1.004, or lower, in redundant chassis. 1756-EN2T module firmware revision 1.004 is not redundancy-compliant either in standard or enhanced redundancy systems. 1756-EN2T modules at firmware revision 1.004 must be upgraded to revision 2.003, or later. Once upgraded, the 1756-EN2T module is redundant-system compliant.</p> <p>The 1756-EN2T module provides a maximum of 256 CIP connections for standard (non redundant) application use. The 1756-EN2T module provides 259 total CIP connections, however, 3 of the 259 CIP connections are always reserved for redundant control. These 3 redundant-system CIP connections always appear to be in use, even when no connections are open. Because 3 of the 259 CIP connections are reserved for redundancy, 256 CIP connections are available for non redundancy use.</p> <p>The 1756-EN2T module used in the enhanced system does not provide features such as socket services, web services, or the Simple Time Network Protocol (SNTP) client.</p>
1756-L61, 1756-L62, 1756-L63, 1756-L63XT, 1756-L64	<p>Inhibiting or removing an inhibition from a redundant controller program can cause the secondary chassis to disqualify, then to qualify again. When changing the Inhibit Program setting, plan for secondary chassis disqualification according to potential implications that are specific to your application. Or, unschedule the program rather than inhibiting it.</p> <p style="text-align: right;">Lgx00090432</p> <p>Do not use Match Project to Controller property with redundant controllers. If you use the Match Project to Controller property available in the Advanced tab of the Controller Properties dialog box, you cannot go online with, download to, or upload from the new primary controller after a switchover. This is because the serial number of the new primary controller is not the same as the serial number of the old primary controller and the project cannot be matched to the newly-switched-to controller.</p> <p style="text-align: right;">Lgx00063573</p> <p>Deleting I/O modules from a project while online with the controller can cause a major nonrecoverable fault (MNRF) on the secondary controller. If your application requires that you delete I/O modules from the project while online with the controller, disqualify the secondary chassis before deleting the I/O modules.</p> <p style="text-align: right;">Lgx00095282</p> <p>Disqualify redundant chassis before running the Data Preserved Download Tool. If you attempt to run the Data Preserved Download Tool with a ControlLogix redundancy-enabled controller while the controllers are synchronized, the Data Preserved Download Tool begins to run, but then becomes inoperable and must be terminated.</p> <p style="text-align: right;">Lgx00099382</p>

**Table 8 - Restrictions with Enhanced Redundancy System, Firmware Revision 16.081\_kit5 (or earlier)**

System Component	Description
1756-L61, 1756-L62, 1756-L63, 1756-L63XT, 1756-L64	<p>If you have either a:</p> <ul style="list-style-type: none"> <li>• 1756-L64 controller at firmware revision 1.10 (boot firmware)</li> <li>• 1756-L61, 1756-L62, 1756-L63 at firmware revision 1.7 (boot firmware)</li> </ul> <p>then you need to update the controller firmware with the controller placed in a nonredundant chassis.</p> <p>If you install the controller in a redundant chassis, a major nonrecoverable fault (MNRf) can occur, or, it can remain in a faulted state. The controller indicates this fault by the OK status indicator being solid red.</p> <p>The label on the side of the controller indicates the series controller and the boot firmware revision as shown in the following example.</p> <div data-bbox="488 556 868 724" style="text-align: center;"> </div> <p>Complete these steps to upgrade from the boot firmware revision.</p> <ol style="list-style-type: none"> <li>1. Put the controller in a nonredundant chassis.</li> <li>2. Update the controller.</li> <li>3. Put the controller in the redundant chassis.</li> </ol> <p>After you have updated the controller from the boot firmware <b>revision</b>, any further updates can be made while the controller is in the redundant chassis.</p> <p><b>Exception</b></p> <p>If your controller is already running in a redundant system and you want to update it to a later revision, you can leave it in the existing redundancy system during the firmware update.</p>

## Application Notes

Consider these application notes when configuring, programming, and using your ControlLogix enhanced redundancy system revision 16.081\_kit5.

### Gateway Address Setting When Using Switches

When you use rotary switches to set an IP address, modules with firmware revision 2.007 default to gateway address 0.0.0.0. When you use the 1756-EN2T/D module, firmware revision 10.006 or later, the default gateway address is 192.168.1.1. This change impacts the upgrading of EtherNet/IP modules in enhanced redundancy systems.

For more information, refer to ControlLogix Enhanced Redundancy System User Manual, publication [1756-UM535](#).

## Out-of-box Switch (888) Behavior Change

With the 1756-EN2T/D modules, firmware 10.006 or later, when the switches are set to 888 to perform an out-of-box reset and the module is installed in a chassis, remember the following:

- 1 The module does not become active on the backplane.
- 2 Other modules do not recognize the module.
- 3 RSLinx Classic software does not recognize the module.
- 4 If the module is installed in the primary chassis of a qualified redundant chassis pair, a switchover does not occur. This item does not apply to 1756-EN2T/A/B/C.

---

**IMPORTANT** The behavior that is described in 1...3 applies to all 1756-EN2T modules. The fourth does not apply to 1756-EN2T/A/B/C.

---

## EtherNet/IP Networks and Redundant Systems

In Enhanced Redundancy systems, revision 16.081\_kit5 (or earlier), use only an EtherNet/IP network for HMI/workstation communication and messaging. Some connections to an enhanced redundancy chassis pair can briefly drop if the connection path between the device and the redundant chassis pair is made exclusively over an EtherNet/IP network.

Do not use an EtherNet/IP network for:

- Communication with I/O modules.

---

**IMPORTANT** The 1756-EN2T/D modules can control remote I/O modules over an EtherNet/IP network. This functionality is not tested in Enhanced Redundancy systems, revision 16.081\_kit5 (or earlier).  
We recommend that you do not use the 1756-EN2T modules/D modules to control remote I/O modules over an EtherNet/IP network.

---

- Communication between devices via produced/consumed tags.

### *Produced/Consumed Tags between Primary Controllers and Nonredundant Controllers*

If controllers in the redundant chassis pair produce tags over an EtherNet/IP network that controllers in remote chassis consume, the connection from the remote controller to the redundant controller can briefly drop during a switchover if the remote chassis' EtherNet/IP communication modules do not use specific firmware revisions.

Use these firmware revisions for EtherNet/IP communication modules in the remote chassis to maintain connections during a switchover.

**Table 9 - Minimum Firmware Revision for Communication Modules**

EtherNet/IP Communication Module in Remote Chassis	Minimum Firmware Revision
1756-EN2F	4.003
1756-EN2T	4.002
1756-ENBT	6.001
1768-ENBT	4.001
1769-L2x	19.011
1769-L3xE	
1788-ENBT	3.001

**IMPORTANT** The minimum firmware revisions listed above apply only to EtherNet/IP communication modules in the remote chassis.  
In a redundant chassis pair, you can use only the ControlLogix modules listed in [Table 1](#).

## Minimum Value for the Watchdog Time

Use this table to determine the equation to use to calculate the watchdog time for each task in your program.

If	Then use this equation
Switchover time is critical to system performance	$(2 * \text{maximum\_scan\_time}) + 150 \text{ ms}$
Module firmware is updated in the field	$(\text{maximum\_scan\_time}) + 245 \text{ ms}$
You need to safeguard against the removal of a intermodule fiber-optic cable	$(\text{maximum\_scan\_time}) + 390 \text{ ms}$

The *maximum\_scan\_time* is the maximum scan time for the entire task when the secondary controller is synchronized.

## Synchronizing after Disqualification

If your secondary chassis becomes disqualified, or you manually disqualify it, take these actions before you try to synchronize the chassis:

- Verify that the synchronization status of the primary module is full compatibility.
- Wait at least 15 seconds after the redundant chassis are disqualified before you try to synchronize them.

## Using Different 1756-RM2, 1756-RM2XT, 1756-RM, or 1756-RMXT Redundancy Module Firmware Revisions

The firmware bundle available for enhanced redundancy system, revision 16.081\_kit1, includes a new electronic data sheet (EDS) file for the 1756-RM2 and 1756-RM2XT redundancy modules.

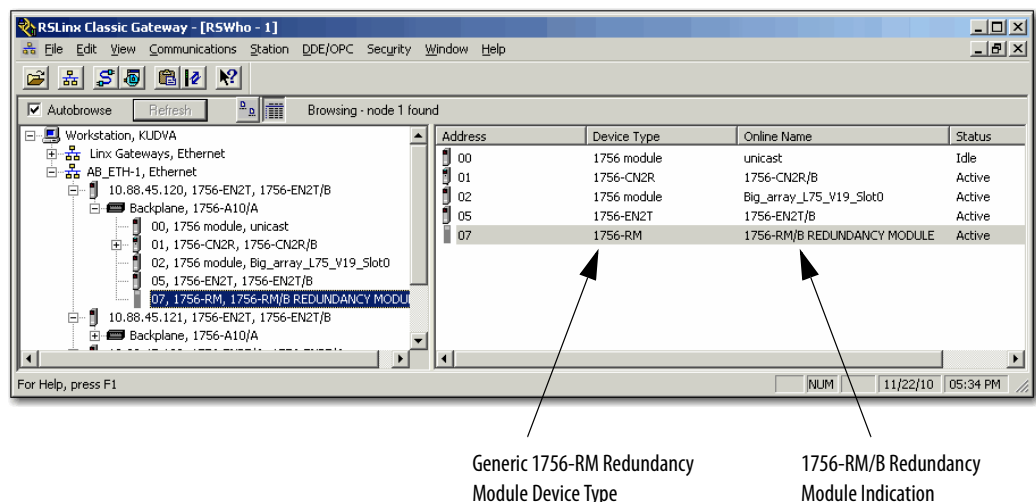
You must install the EDS files available with the enhanced redundancy system, revision 16.081\_kit1 firmware bundle or you cannot launch or, consequently, use the RMCT, version 8.01.05 in an enhanced redundancy system, revision 16.081\_kit1 application.

When using the 1756-RM or 1756-RMXT, and you continue to use the EDS file made available with enhanced redundancy system, revision 16.081 and earlier, series B redundancy modules, used in revision 16.081\_kit1 appear as series A redundancy modules in the Device Type column of an RSWho browse screen.

In this case, that is, using the EDS file made available with enhanced redundancy system, revision 16.081 or earlier, use the information in the Online Name column to identify your redundancy modules' series level. The information in the Online Name column is accurate.

We recommend that you use the EDS file for redundancy modules that is included with the enhanced redundancy system, revision 16.081\_kit1 firmware bundle. With the new EDS file, the RSWho software Device Type column shows a generic 1756-RM device type, as shown in this graphic.

Failure to install the new EDS files available in enhanced redundancy system, revisions 16.081\_kit1 (or later), firmware bundles prevents the use of RMCT, version 8.02.01.

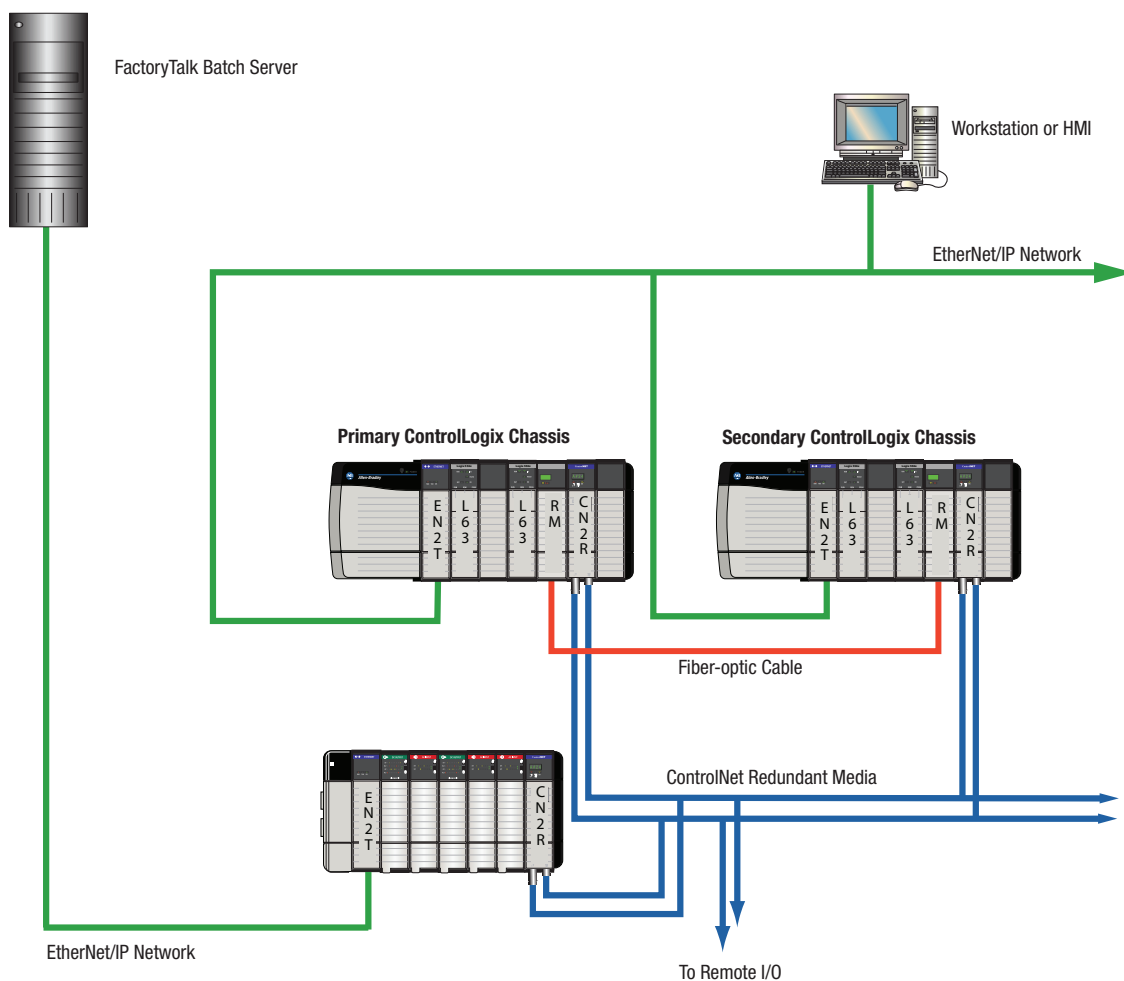


## Using a Redundant System with a FactoryTalk Batch Server

To connect a ControlLogix redundancy system to a FactoryTalk Batch Server, you must bridge from the ControlNet network of the redundant system to the EtherNet/IP network, and then connect to the FactoryTalk Batch Server.

You cannot connect to the FactoryTalk Batch Server directly from an EtherNet/IP module placed in the redundant chassis.

This illustration demonstrates one method of bridging the ControlNet network of the redundant system to the EtherNet/IP network that the FactoryTalk Batch Server is running on.



## Using a Redundant System and CIP Equipment Phases

When implementing a redundant system that uses Common Industrial Protocol (CIP) equipment phases, we recommend certain programming considerations to help avoid potential issues with your redundant system.

### Using the *EquipmentPhase.StepIndex* Tag

Each CIP equipment phase that you have in your project has a status tag of a PHASE data type. One of the members of the PHASE data type is *EquipmentPhase.StepIndex*. The *.StepIndex* tag stores data that indicates the step currently in progress. This tag can also be used to advance through steps if the next step value is moved into the *.StepIndex* tag on completion of a step.

Controller Tags - MyPhaseManager(controller)

Scope: MyPhaseManager Show... PHASE

Name	Value	Data Type
- Drain_Tank	{...}	PHASE
+ Drain_Tank.State	64	DINT
- Drain_Tank.Running	0	BOOL
- Drain_Tank.Holding	0	BOOL
- Drain_Tank.Restarting	0	BOOL
- Drain_Tank.Stopping	0	BOOL
- Drain_Tank.Aborting	0	BOOL
- Drain_Tank.Resetting	0	BOOL
- Drain_Tank.Idle	1	BOOL
- Drain_Tank.Held	0	BOOL
- Drain_Tank.Complete	0	BOOL
- Drain_Tank.Stopped	0	BOOL
- Drain_Tank.Aborted	0	BOOL
+ Drain_Tank.Substate	0	DINT
- Drain_Tank.Pausing	0	BOOL
- Drain_Tank.Paused	0	BOOL
- Drain_Tank.AutoPause	0	BOOL
+ Drain_Tank.StepIndex	0	DINT
+ Drain_Tank.Failure	102	DINT
+ Drain_Tank.UnitID	0	DINT

PHASE Data Type

.StepIndex Member

Monitor Tags Edit Tags

Verify that the current `EquipmentPhase.StepIndex` tag value is crossloaded to the secondary controller by:

- Using a buffer to hold the target step value (that is, the value of the next step) and update that value when a step transition occurs.
- Creating logic to move the target step value into the `EquipmentPhase.StepIndex` tag once the current step is completed.

If those programming considerations are made, after a switchover, the new primary controller begins executing according to the `EquipmentPhase.StepIndex` tag value, where if:

- The switchover occurs just **after** the tag value is updated, the step newly-transitioned to executes as expected without duplication.
- The switchover occurs just **before** the tag value is updated, the current step executes again before transitionally to the next step.

Because of the small possibility of steps being executed twice upon a switchover, we recommend that you organize steps and phase logic into groups that is not affected if a step is executed twice as a result of a switchover.

For more information about programming for step execution after a switchover, see Knowledgebase Answer ID 62193 available at:

<http://rockwellautomation.com/support>

For more information about the PHASE data type, see the PhaseManager User Manual, publication [LOGIX-UM001](#).



## Using Unit Tags

Batch Projects containing CIP equipment phases that require the use of Unit Tags also require that a non-CIP data server be used to service the Unit Tags. Either of these data servers can be used:

- OPC data server, available with RSLinx Classic software
- LiveData data server, available with RSLinx Enterprise software

However, when a redundant system is used, communication through an OPC or LiveData data server can be interrupted when a switchover or qualification occurs.

We recommend that, if possible, you use the LiveData data server to service Unit Tags. This is because communication interruptions that can result from a switchover or qualification are less likely to occur when the LiveData data server is used.

For more information about communication interruptions with both the OPC and LiveData servers, see Knowledgebase Answer ID 62192 available at: <http://www.rockwellautomation.com/support>.

## Multiple CIP Data Servers with One FactoryTalk Batch Server

If you take a controller offline and download its project while the same FactoryTalk Batch Server is communicating with other ControlLogix controllers in the system that are running CIP equipment phases, you can experience a range of conversation statuses on the CIP data servers associated with the other controllers. If the other CIP data servers encounter the status changes, the FactoryTalk Batch Server can issue a hold command (HOLD) to any recipes that are currently running.

You can experience this if your redundant or nonredundant ControlLogix system is configured and running with these components:

- A single FactoryTalk Batch Server that is running CIP equipment phases
- The CIP equipment phases are running in more than one ControlLogix controller
- The FactoryTalk Batch Server is configured with a separate CIP data server for each ControlLogix controller
- The FactoryTalk Batch system is patched with patch 10.00.00.26 or later. (Patch 10.00.00.26 is required for use with redundancy firmware revision 16.080.)

If your system is configured as described above, and you take one of the ControlLogix controllers offline and download the project, these changes in conversation statuses can occur.

- a. The other CIP data servers that the FactoryTalk Batch Server is communicating with can temporarily indicate a SUSPECT or LOST conversation status.
- b. As a result of the LOST state on the CIP data servers, the FactoryTalk Batch Server issues a HOLD command and phases or recipes that are running go to a held state.
- c. The conversation statuses of the CIP data servers eventually transition back to GOOD after a few minutes.
- d. When the CIP data servers return to the GOOD conversation status, you can manually click Clear Failures and Restart from the Batch View to resume recipe execution.

The potential for you to experience this issue with your CIP data servers depends upon:

- The size of the project being downloaded from the offline controller.
- The configuration of Timeout and Retry settings for the CIP data servers in the Area Model. These settings are used by the Batch server to determine how long to wait before changing the CIP data server conversation status to SUSPECT or LOST.

For more information about using multiple CIP data servers with one FactoryTalk Batch Server, see Knowledgebase Answer ID 62369 available at:

<http://rockwellautomation.com/support>

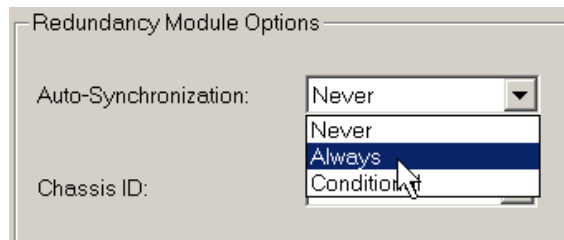
## Replace a Module in the Secondary Chassis that has the Same Catalog Number and Firmware Revision

These steps only apply when the primary chassis is at revision 16.081\_kit4 and 16.081\_kit5. These steps are used when performing a direct communication module replacement, for example, when replacing a communication module in the secondary chassis with a module that has the same:

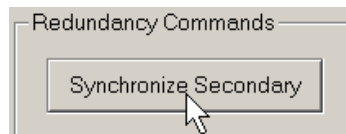
- Catalog number
- Series
- Firmware (after updating the firmware, if necessary)

When you replace communication modules, make sure that the node address (for ControlNet modules), rotary switches, and Port Configuration (for Ethernet modules) match the existing modules.

1. Using the Redundancy Module Configuration Tool (RMCT):
  - a. Set Auto-qualification to Never.
  - b. Disqualify the redundant chassis pair (if not already disqualified).
2. Remove the module from the secondary chassis and replace it with the new module.
3. If applicable, update the module firmware by using ControlFLASH software.
4. In the RMCT, from the Auto-Synchronization pull-down menu, choose your preferred method.



5. Manually synchronize the chassis, if needed.



## Upgrade from an Enhanced Redundancy Revision

Complete the tasks listed in this table to upgrade your redundancy system from one **enhanced** redundancy system revision to another **enhanced** redundancy system revision while your process continues to run.

---

**IMPORTANT** These steps also apply to the 1756-RM2 modules.

---

Task	Page
Before You Begin	28
Upgrade Workstation Software	29
Upgrade the Redundancy Module Configuration Tool (RMCT)	30
Download and Install Redundancy Firmware Bundle	31
Update EDS Files	31
Prepare the Redundant Chassis for the Firmware Upgrade	32
Update Primary 1756-RM Redundancy Module Firmware	33
Update the Secondary 1756-RM2 Redundancy Module Firmware and All Other Module Firmware in the Secondary Chassis	35
Prepare the RSLogix 5000 Project for the Upgrade	39
Lock and Switchover the System for Update	41
Update the New Secondary Chassis Firmware	43
Synchronize the Redundant Chassis	45

### Before You Begin

---

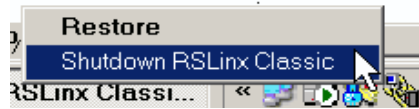
**IMPORTANT**

- During the upgrade procedures, you are not able to use RSLogix 5000 software to change the mode of the controller. Instead, use the keyswitch on the front of the controller.
  - Leave RSNetWorx for ControlNet software closed or offline throughout this procedure. Otherwise, you see errors in the RSNetWorx software during the update process.
  - While completing these tasks to upgrade your redundancy firmware, remember the following:
    - Do not make any changes to the RSLogix 5000 project other than those identified in these tasks.
    - Verify that no one will be, or, is making, changes to the project.
-

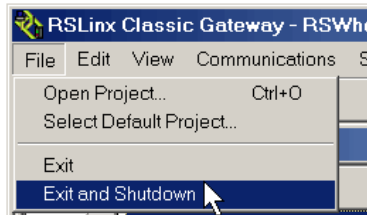
## Upgrade Workstation Software

Before you download and upgrade software for use with your redundant system, use one of these methods to fully shutdown RSLinx Classic software.

- Right-click the RSLinx Classic icon in the notification area of the screen and choose Shutdown RSLinx Classic.



- With RSLinx Classic software open, from the File menu choose Exit and Shutdown.



Obtain and install the software required for your enhanced redundancy system configuration.

The 1756-EN2T/C (or earlier) modules must use firmware revision 2.007 with enhanced redundancy systems, revision 16.081\_kit3 (or earlier). Firmware revision 2.007 is unsigned firmware.

You cannot use digitally-signed firmware on 1756-EN2T/C (or earlier) modules. For more information on, see [1756-EN2T Modules Digitally-signed Firmware on page 4](#).

Use the installation instructions or release notes provided with each software version for installation procedures and requirements.

## Upgrade the Redundancy Module Configuration Tool (RMCT)

Obtain and install the compatible version of the RMCT. For more information, see [About the Redundancy Module Configuration Tool on page 5](#).

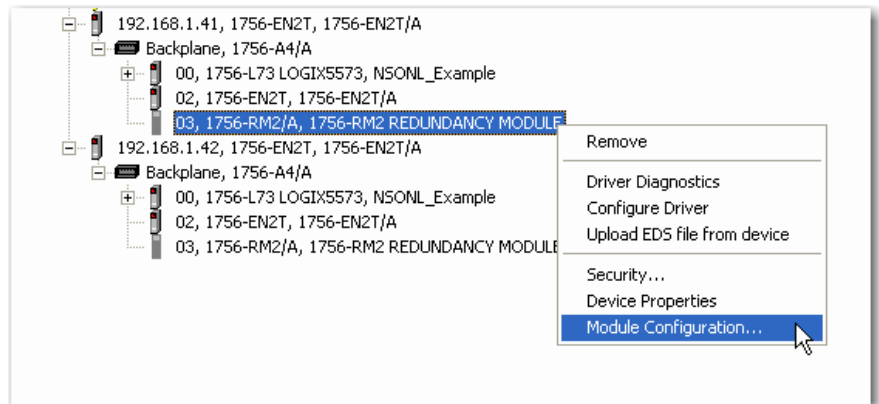
### Verify Your RMCT Version

Complete these steps to check or verify the version of the Redundancy Module Configuration Tool (RMCT) you have installed.

**TIP** The RMCT launches at the version that is compatible with the 1756-RM module firmware that is currently installed.

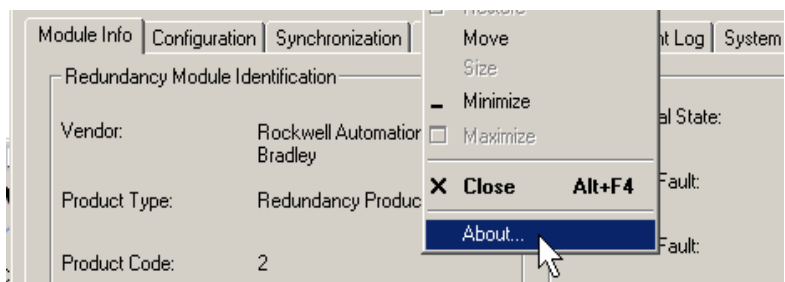
If you have not upgraded your 1756-RM module firmware after upgrading your RMCT version, the RMCT version that is indicated may not reflect the version you upgraded to.

1. In the RSLogix Classic software, start the RMCT for the 1756-RM module in the primary chassis

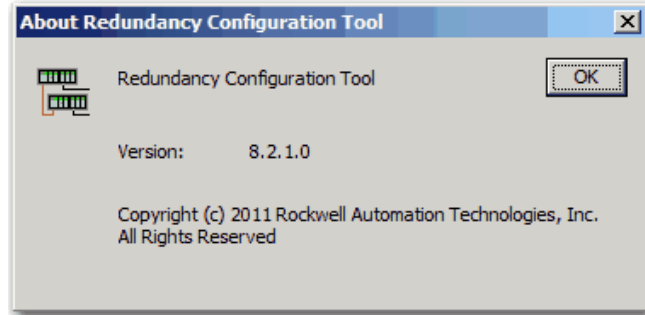


The Module Configuration dialog box opens.

2. Right-click the title bar and choose About.



This enhanced redundancy system revision requires the RMCT, version 8.02.01 that is packaged with this enhanced redundancy system revision bundle. The About screen for the RMCT displays 8.2.1.0 but it's the correct version.



## Download and Install Redundancy Firmware Bundle

Download and install the redundancy firmware revision bundle from the Rockwell Automation Support website at:

<http://rockwellautomation.com/support>

The redundancy firmware bundles are posted in the Downloads section and are classified in the Control Hardware category.

## Update EDS Files

EDS files for the 1756-EN2T/D modules, firmware version 10.007 or later, and 1756-CN2/C firmware revision 25.005 may not be available when you install RSLinx software. You can use RSLinx software to upload EDS files from the module or download EDS files from the Product Compatibility and Download Center web site.

If needed, obtain EDS files for modules in your system from the Rockwell Automation Support website at:

<http://www.rockwellautomation.com/resources/eds/>.

Once you have downloaded the required EDS file, launch the EDS Hardware Configuration Tool by choosing Start > Programs > Rockwell Software > RSLinx Tools > EDS Hardware Installation Tool.

The tool prompts you to Add or Remove EDS files.

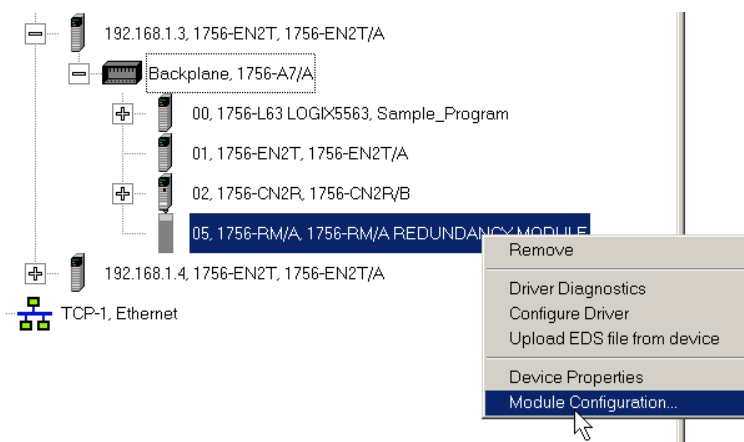
## Prepare the Redundant Chassis for the Firmware Upgrade

Complete these steps to prepare both the primary and secondary redundant chassis for redundancy firmware upgrades.

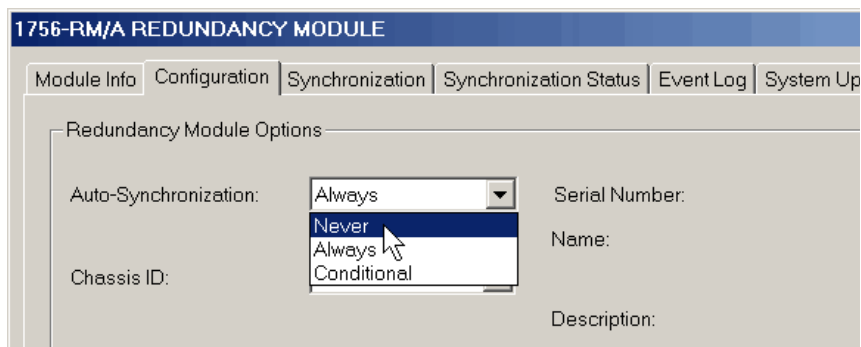
1. Set the mode switch of the primary and secondary controllers to REM.

If the redundant controllers in both chassis of the redundant chassis pair are not in Remote Program (REM) mode, the redundancy firmware upgrade cannot be completed.

2. In RSLinx Classic software, start the RMCT for the 1756-RM module in the primary chassis



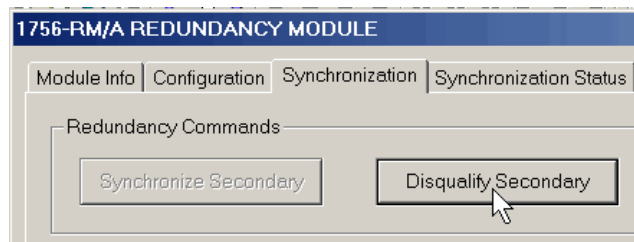
3. Click the Configuration tab in RMCT.
4. From the Auto-Synchronization pull-down menu, choose Never.



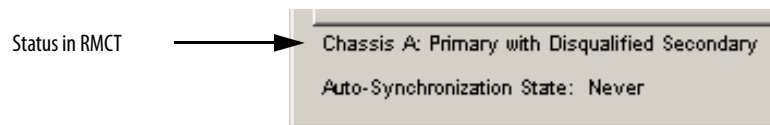
5. Click Apply, then click Yes.



- On the Synchronization tab, click Disqualify Secondary, then click Yes.



The secondary chassis is disqualified as indicated by the RMCT at the bottom-left of the RMCT and on the redundancy module's status display.



- Click OK and close the RMCT.

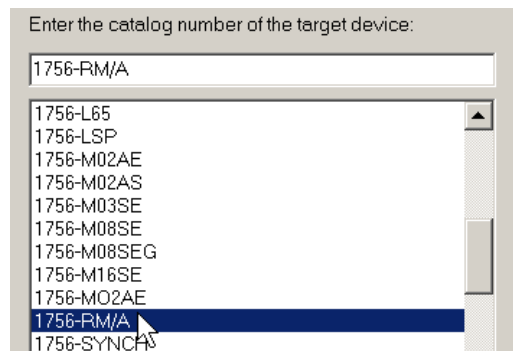
Closing the RMCT helps prevent a timeout from occurring when the redundancy module's firmware is upgraded.

## Update Primary 1756-RM Redundancy Module Firmware

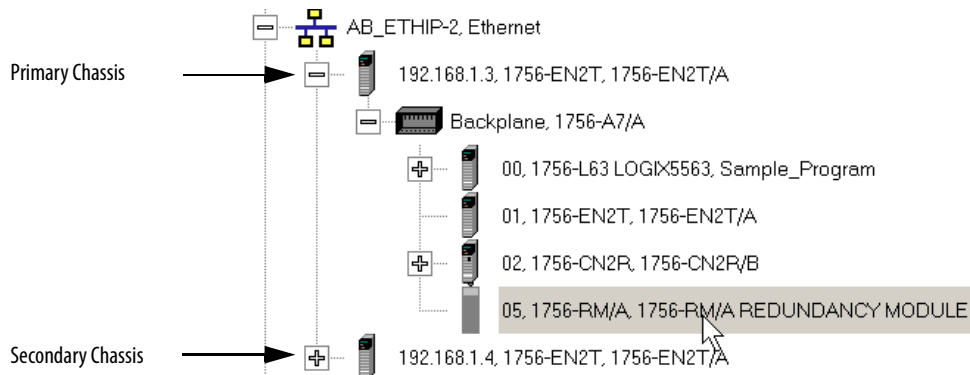
Wait 45 seconds before you begin updating the 1756-RM firmware. During this time, the redundancy module conducts internal operations to prepare for an upgrade.

Complete these steps to upgrade the firmware of modules in the primary chassis.

- Launch ControlFlash software and click Next.
- Select the redundancy module catalog number and click Next.



3. Browse to the redundancy module and select it.

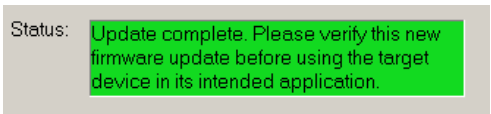


4. Click OK.

5. Select the firmware revision to upgrade to and click Next.

6. Click Finish.

The firmware begins to update. When the upgrade is complete, the Update status dialog box indicates completion.

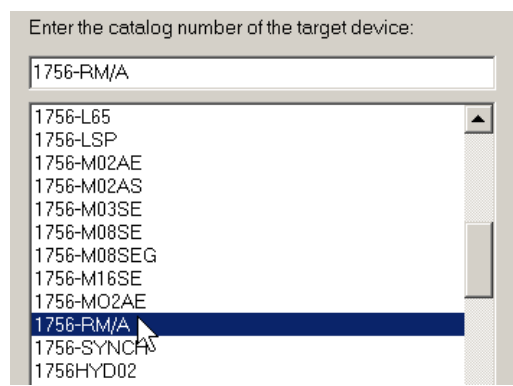


## Update the Secondary 1756-RM2 Redundancy Module Firmware and All Other Module Firmware in the Secondary Chassis

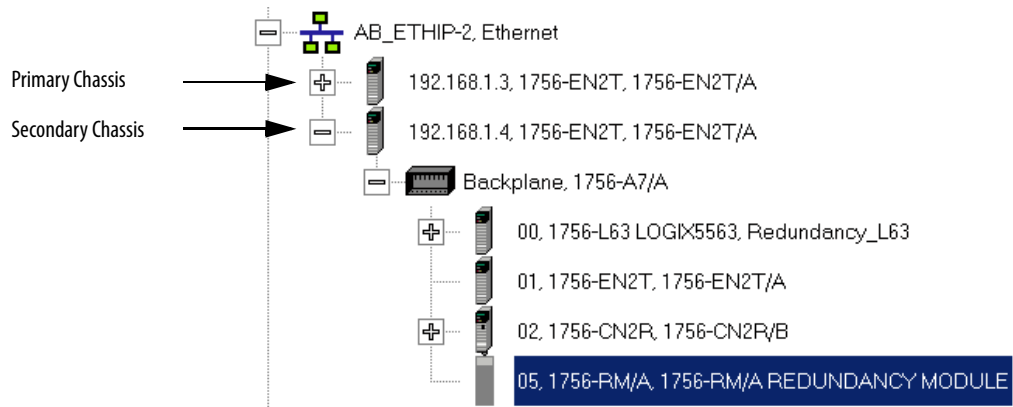
Apply power to the secondary chassis. Wait 45 seconds before you begin updating the secondary chassis firmware. During this time, the redundancy module conducts internal operations to prepare for an upgrade.

Complete these steps to upgrade the firmware in the secondary chassis.

1. Launch ControlFlash software and click Next.
2. Select the redundancy module catalog number and click Next.



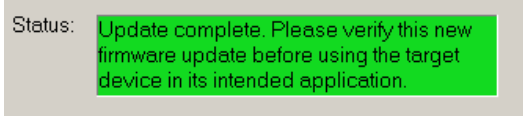
3. Browse to the redundancy module and select it.



4. Click OK.

5. Select the firmware revision to upgrade to and click Next.
6. Click Finish.

The firmware begins to update. When the upgrade is complete, the Update status dialog box indicates completion.



7. If you are replacing and upgrading your module hardware, remove the module from the secondary chassis and replace it with the new module.

---

**IMPORTANT** If you are replacing and upgrading your redundant controllers, verify that the planned secondary controller provides the same, or greater, memory as the primary controller.

---

**IMPORTANT** This is applicable only to the controllers. If replacing communications modules or the Redundancy modules, refer to those specific sections.

When replacing communications modules, make sure that the node address (for Controlnet modules), rotary switches, and Port Configuration (for Ethernet modules) match the existing modules.

---

Use this table to determine if your planned primary and secondary controllers can be used together in the redundant chassis.

**Table 10 - Controller Compatibility**

Primary Controller	Compatible Secondary Controller
1756-L61	1756-L61, 1756-L62, 1756-L63, 1756-L64
1756-L62	1756-L62, 1756-L63, 1756-L64
1756-L63	1756-L63, 1756-L64
1756-L64	1756-L64

8. Complete steps [2...7](#) for each module in the secondary chassis, including the new controller, if applicable.

---

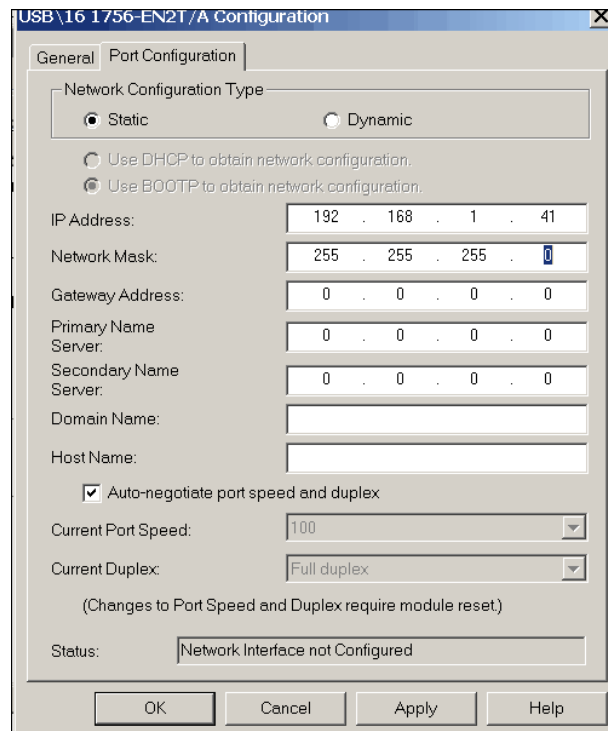
**IMPORTANT** Continue with following steps, if the system upgrade is from any of the revisions 16.054 or 16.080, 16.081 to revision 16.081\_kit5 and is replacing 1756-EN2T/C (or earlier) modules with 1756-EN2T/D modules, and the modules being replaced have rotary switches set to 2...254.

---

9. Make a note of the **primary** Ethernet module's Port Configuration including the following:

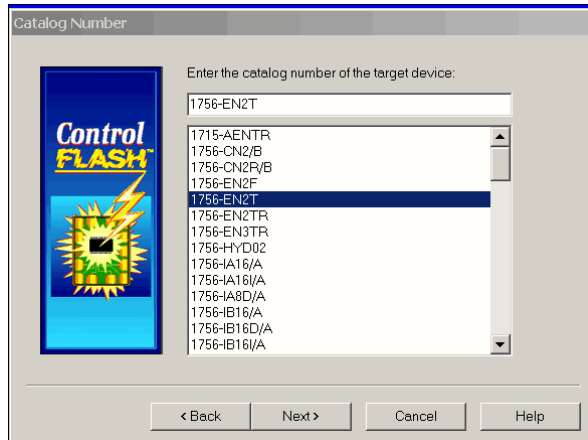
- IP Address
- Network Mask

- Gateway Address

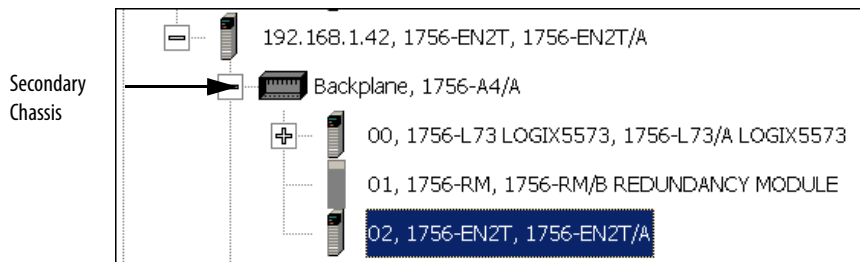


10. Disconnect the Ethernet cables from the secondary Ethernet module.
11. In the 1756-EN2T/D replacement module, set the 1756-EN2T/D module switches to 888 and insert it in the secondary chassis.
12. After the reset is complete, remove the module from the secondary chassis.
13. If a 1756-EN2T/C module is being updated, remove the 1756-EN2T/C from the secondary chassis.
14. Set the switches to 999 and reinsert the module into the secondary chassis.

15. Bridging across the backplane (or via the Ethernet module's USB port), configure the newly added 1756-EN2T/D module's Port Configuration to match the **primary** Ethernet module's Port Configuration from [step 9](#).
16. Confirm the **secondary** 1756-EN2T/D module is at firmware revision 10.007 or that the EN2T/C (or earlier) module is at firmware version 2.007 or that the EN2T/C (or earlier) module is at firmware version 2.007.
  - a. Launch ControlFLASH software and click Next.
  - b. Select the Ethernet module catalog number and click Next.

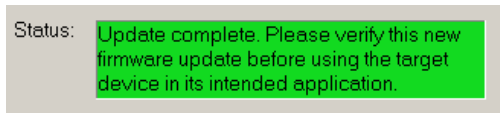


- c. Browse to the module and select it.



- d. Click OK.
- e. Select the firmware revision to upgrade to and click Next.
- f. Click Finish.

The firmware begins to update. When the update is complete, the Update status dialog box indicates completion.



Wait for the update to complete.

17. After the update completes, connect the Ethernet cable to the secondary Ethernet module, cycle power on the secondary chassis, and wait for communication to resume on the network.
18. Check the Synchronization tab in the RMCT to verify that compatibility is Full for all communication modules in the chassis.
19. Repeat [step 9...step 18](#) for all Ethernet modules that have their rotary switches set between 2...254.

Once you have either replaced or upgraded the firmware for each module in the secondary chassis, prepare the RSLogix 5000 project for the upgrade.

### Prepare the RSLogix 5000 Project for the Upgrade

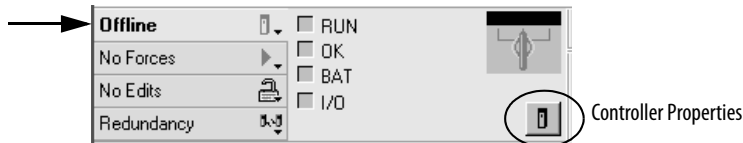
Complete these steps to prepare the RSLogix 5000 program and controllers for the upgrade.

1. Launch RSLogix 5000 programming software and go online with the controller.
2. Verify that the watchdog time is set to a value that corresponds with the requirements of the redundancy firmware revision and your application.  
See the section [Minimum Value for the Watchdog Time on page 20](#) for information about calculating the minimum watchdog time.
3. Cancel or assemble any pending test edits.
4. Remove all SFC forces from the project.
5. Verify that no changes need to be made to the following:
  - I/O forces
  - I/O configuration

After this step, changes to I/O cannot be made until after the redundancy firmware upgrade is complete and both chassis are synchronized.

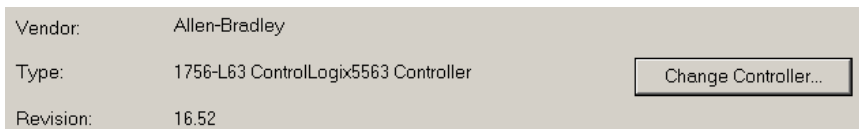
6. Save the project.

7. Go offline.



8. Click Controller Properties.

9. Click Change Controller.

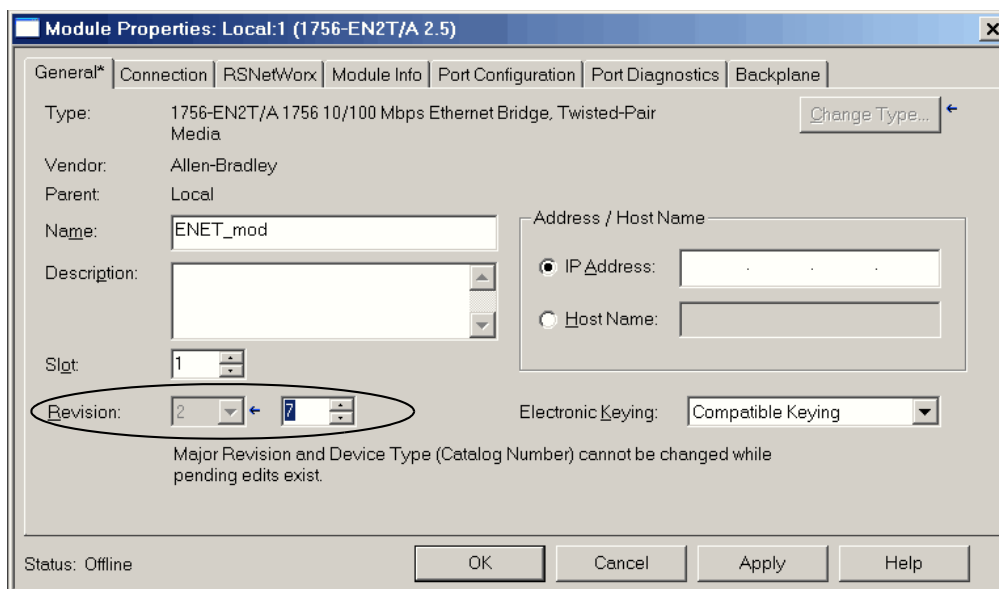


10. Specify the controller revision you are updating to.

11. If you installed a new controller while upgrading the primary chassis firmware, specify the new controller catalog number.

12. Click OK.

13. Access the Module Properties for each communication module in the chassis and specify the module firmware revision you are upgrading to.



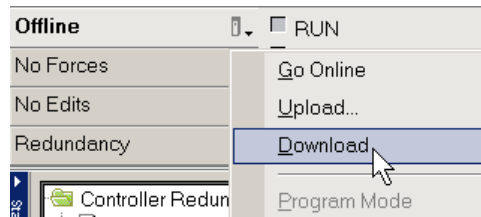
**TIP**

If you are unable to specify the new revision, you may need to change the Electronic Keying parameter to Compatible Keying (recommended) or Disable Keying.



14. Save the project.
15. Download the project to the secondary controller.

The secondary controller is at the higher network address of the two available for the redundant chassis.



16. After the download is complete, go offline.

You are now ready to lock the system and initiate a locked switchover to update the primary chassis. Continue with [Lock and Switchover the System for Update](#).

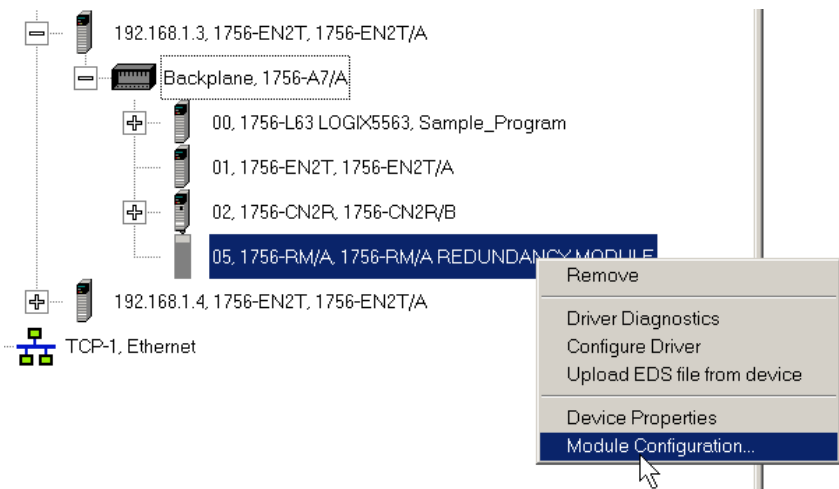
## Lock and Switchover the System for Update

Once you have downloaded the RSLogix 5000 project you prepared, complete these steps to lock your system and initiate a switchover.

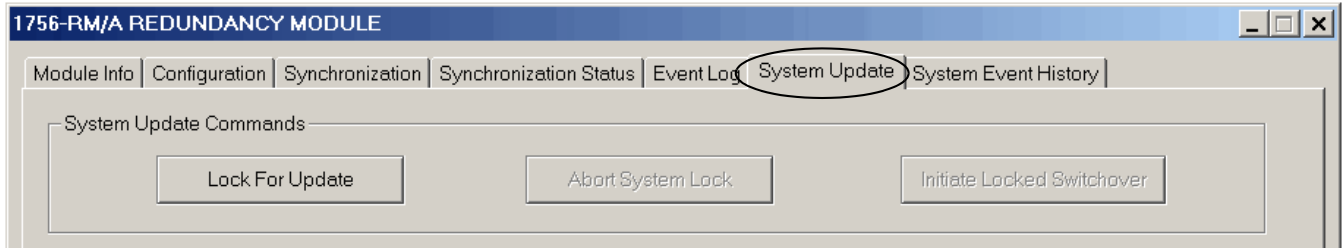
### IMPORTANT

- Remain offline while completing these steps.
- Once you have locked the system, do not abort the system lock. Aborting the system lock during this procedure clears the project from the secondary controller.
- Do not disconnect any communication cables while completing these steps.
- Completing a locked switchover causes SFC instructions to be reset to their initial state. This can result in SFC instructions executing twice.

1. In the RSLinx Classic software, start the RMCT for the 1756-RM module in the primary chassis.



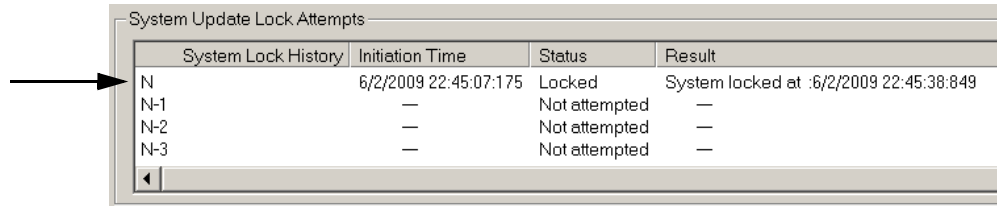
2. Click the System Update tab.



3. Click Lock for Update, then click Yes.

4. Wait for the system to lock.

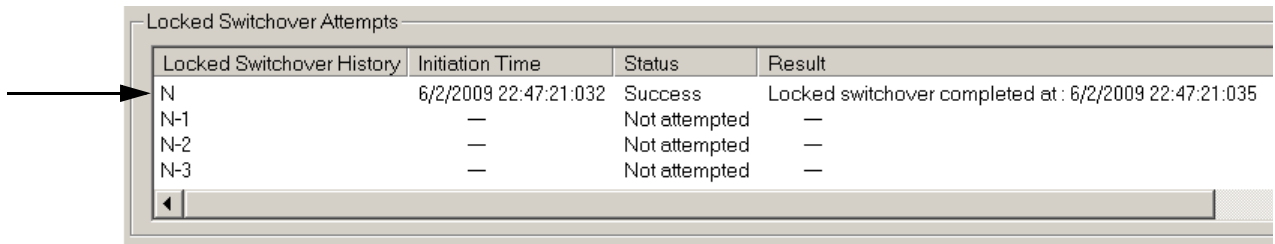
The System Update Lock Attempts log indicates when the system lock is complete.



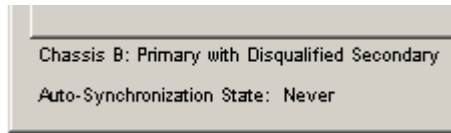
5. Click Initiate Locked Switchover, then click Yes.



This step results in your secondary chassis assuming control and becoming the primary chassis. When the switchover is complete, the Locked Switchover Attempts log indicates success.



In addition to the log, the chassis status indicated in the bottom of the RMCT updates to reflect the switchover.



Once your locked switchover is complete, continue by updating the firmware of the modules in the new secondary chassis.

## Update the New Secondary Chassis Firmware

**IMPORTANT** Using RSLinx, update the Gateway address of the primary chassis ethernet module to 192.168.1.1, if the system upgrade is from revision 16.054 or 16.080, 16.081 to revision 16.081\_kit5 and replacing 1756-EN2T/C (or earlier) modules with EN2T/D modules, and the modules being replaced have rotary switches set to 2...254.

Verify that your chassis have been locked for update and that the locked switchover has completed successfully.

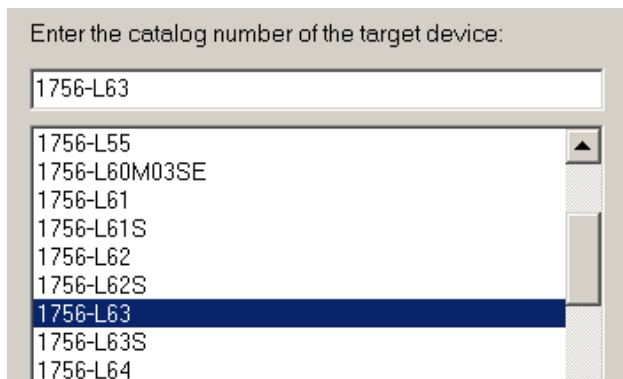
Then complete these steps to upgrade the firmware of all of the modules the new secondary chassis, except for the 1756-RM module that has already been updated.

See section [Update Primary 1756-RM Redundancy Module Firmware on page 33](#).

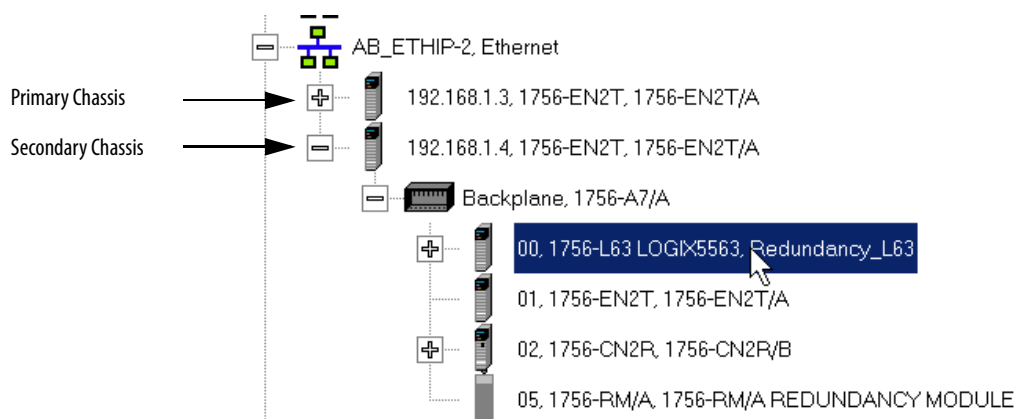
1. If you are replacing and upgrading your module hardware, remove the module from the secondary chassis and replace it with the new module.
 

**TIP** When replacing communications modules, make sure that the node address (for Control net modules), rotary switches, and Port Configuration (for Ethernet modules) match the existing modules.
2. If it is an Ethernet module:
  - a. Make a note of the rotary switch setting on the modules that you are replacing.
  - b. Set rotary switches on the replacement module to 888 and insert the module into the chassis.
  - c. After reset completed, remove the module.
  - d. Set the rotary switches to original values that you noted in step a.
  - e. Insert the module.
  - f. Go into the module properties and restore the values that you noted in [step 9 on page 36](#).
3. Launch ControlFlash software and click Next.

4. Select the module catalog number and click Next.

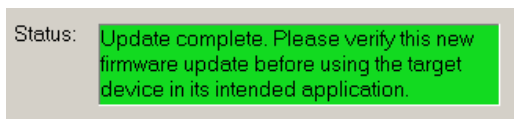


5. Browse to the module and select it.



6. Click OK.
7. Select the firmware revision to upgrade to and click Next.
8. Click Finish.

The firmware begins to update. When the upgrade is complete, the Update status dialog box indicates completion.



9. If you are replacing and upgrading your modules, remove the module from the secondary chassis and replace it with the new module.

---

**IMPORTANT** If you are replacing and upgrading your redundant controllers, verify that the planned secondary controller provides the same, or greater, memory as the primary controller.

---

- Complete steps 2...2 for each module in the new secondary chassis, including the new controller, if applicable.

---

**IMPORTANT** If you are replacing 1756-EN2T/C (or earlier) modules with 1756-EN2T/D modules, make sure the configuration for the new modules in the new secondary chassis match that of the partners in the new primary chassis.

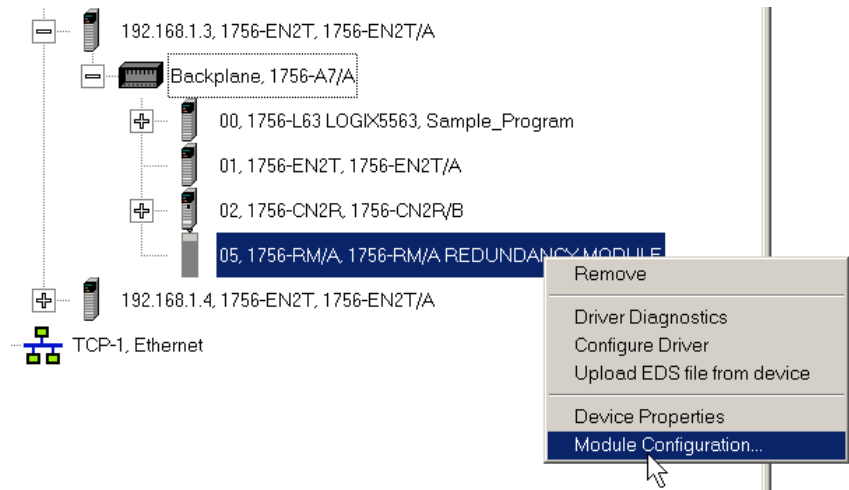
---

Once you have upgraded the firmware for each of the modules in the new secondary chassis, continue by synchronizing the redundant chassis.

## Synchronize the Redundant Chassis

Complete these steps to synchronize the redundant chassis after firmware in both chassis have been upgraded to the same revision.

- In the RSLinx Classic software, start the RMCT for the 1756-RM module in the primary chassis



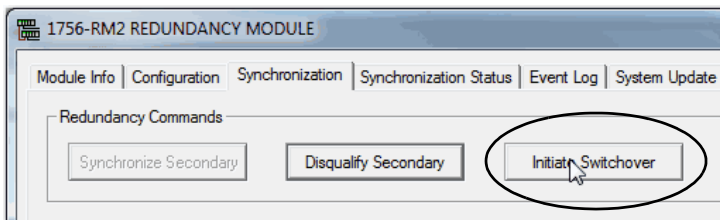

---

**IMPORTANT** You only have to do steps 3...7 if the system upgrade is from revision 16.054 or 16.080, 16.081 to revision 16.081\_kit5 and replacing 1756-EN2T/C (or earlier) modules with EN2T/D modules, and the modules being replaced have rotary switches set to 2...254.

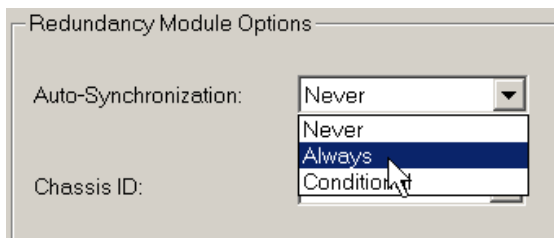
---

- Click the Configuration tab.

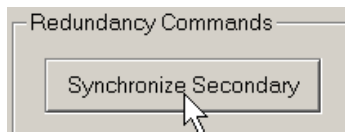
3. Initiate a switchover.



4. In the new secondary, set the rotary switches back to the original configuration.
5. Repeat this for all Ethernet modules that need the rotary switches set back to 2...254.
6. From the Auto-Synchronization pull-down menu, choose the frequency that suits your application.



7. Manually synchronize the chassis, if needed.



8. Set the redundancy module date and time according to your preference.
9. Click OK.
10. Close the RMCT.

Your redundant system firmware upgrade is now complete.

## Update IP Address Set Via Software to Address Set Via Rotary Switches

This section describes how to change Ethernet IP address settings set by software to IP addresses set by rotary switches when your system must continue to operate during the update.

One reason to change IP address settings to the rotary switch option is if your system is experiencing a Duplicate IP address condition and IP address swapping is disabled.

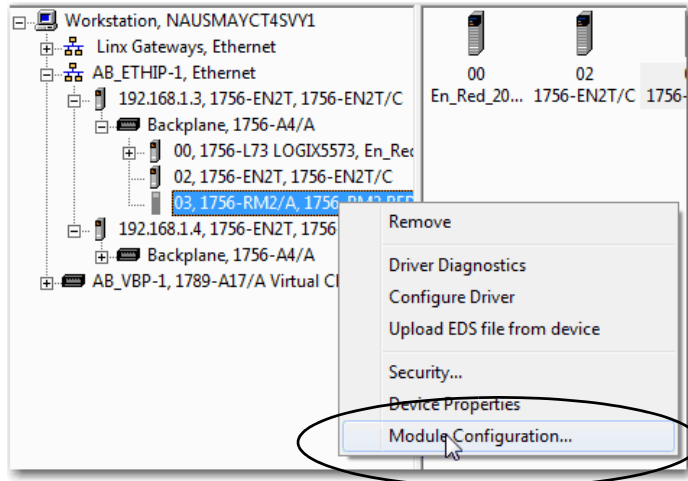
---

**IMPORTANT** Remember the following before using this section:

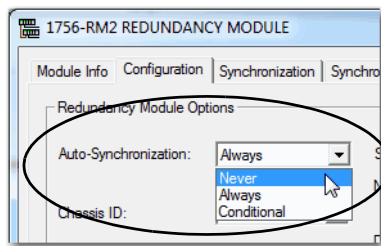
- If you are replacing 1756-EN2T/D modules, ignore this section.
  - You must execute this procedure before the Redundancy System Update procedure.
  - **You must physically be present** at the location of the redundant chassis to do this upgrade.
  - The term 1756-RM is synonymous with 1756-RM2 in the text and graphics throughout this section.
- 

Complete the following steps.

1. Open RSLinx Classic software and browse to the redundancy module.
2. Right-click the redundancy module in the primary chassis and choose Module Configuration.



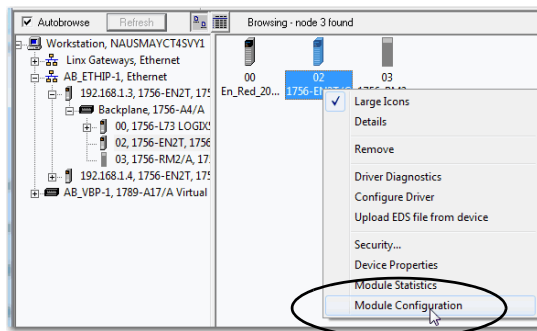
3. Verify that the chassis are synchronized.
4. On the Configuration, choose Never from the Auto-Synchronization pull-down menu.



5. Click Apply, and then click Yes.
6. Remove the secondary 1756-EN2T module from its chassis and disconnect the Ethernet cables from the module.
7. Configure the IP address on the primary 1756-EN2T module.

The following steps use RSLinx Classic software.

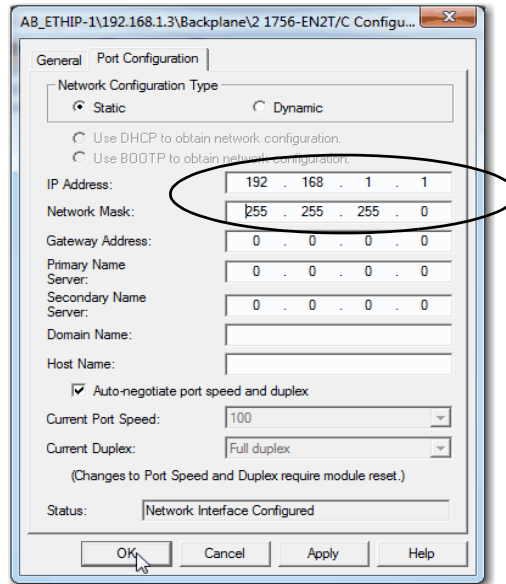
- a. Right-click the module icon and choose Module Configuration.





- b. On the Port Configuration tab, enter the desired IP address, Network Mask (if not entered automatically), and click OK.

This example uses the values in the following screen capture.



8. Set the rotary switches on the removed secondary module to 888.
9. Reinstall the module into the secondary chassis.

---

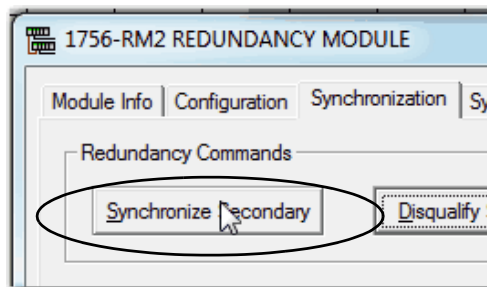
**IMPORTANT** Make sure the module is not physically connected to the network before reinstalling it.

---

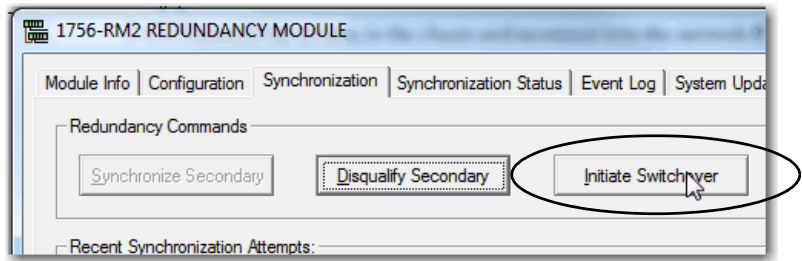
10. After the module resets, remove it again.
11. Set the rotary switches on the secondary module to the desired IP address.
12. Reinstall the module in the chassis and reconnect it to the network.

Any Duplicate IP address errors that existed previously are no longer present.

13. On the Synchronization tab in the RMCT, click Synchronize Secondary to synchronize the chassis.



14. On the same tab, click Initiate Switchover to switch the primary and secondary chassis in the system.



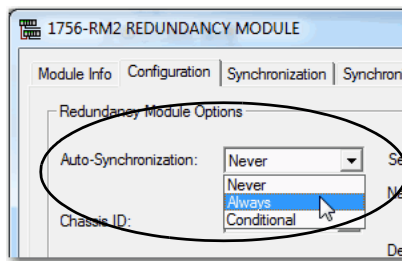
15. Remove the new secondary 1756-EN2T module from its chassis and disconnect the Ethernet cables from the module.
16. Set the rotary switches on the removed secondary module to 888.
17. Reinstall the module into the secondary chassis.

---

**IMPORTANT** Make sure the module is not physically connected to the network before reinstalling it.

---

18. After the module resets, remove it again.
19. Set the rotary switches on the secondary module to the desired IP address.
20. Reinstall the module in the chassis and reconnect it to the network.  
Any Duplicate IP address errors that existed previously are no longer present.
21. On the Configuration, choose Always from the Auto-Synchronization pull-down menu.



22. Verify that the chassis are synchronized.
23. Click Apply, and then click Yes.

## Replace 1756-RM/B (or earlier) Modules with 1756-RM2 Modules

You can replace your current redundancy modules with 1756-RM2 modules without initiating a switchover.

**TIP** For the following steps, 'redundancy modules' refers to 1756-RM or 1756-RM/B modules.

Before executing these steps, review [Table 1](#) and [Table 2](#).

- [Required Series and Firmware Revisions for Components Used in an Enhanced Redundancy System, Revision 16.081\\_kit5 on page 3](#)
- [Required Software Versions for Enhanced Redundancy System, Revision 16.081\\_kit5 on page 5](#).

1. Install the compatible version of the RMCT software.  
You must shut down RSLinx Classic software to perform the installation, and then restart RSLinx Classic software after the installation is complete.
2. On the RMCT Configuration tab, from the Auto-Synchronization pull-down menu, choose Never.
3. Disqualify the redundant chassis pair (if not already disqualified) by using the RMCT.
4. Unplug the fiber cable on both of the redundancy modules.
5. Close any open RMCT sessions connected to the current redundancy modules that are being replaced.
6. Remove the redundancy module pair (in any order) from the redundant chassis.
7. Insert the 1756-RM2 redundancy module pair (in any order) in the redundant chassis into the same slots as the redundancy modules.
8. If not already installed, use RSLinx Classic software to upload the EDS file for the 1756-RM2 module.

If needed, obtain the EDS file for the 1756-RM2 module. Right-click the module in RSWho and choose 'Upload EDS file from device'.

9. Update the primary and secondary 1756-RM2 modules to the to the appropriate firmware revision.
10. Reconnect the fiber cable on either CH1 or CH2 of the 1756-RM2 redundancy module.
11. Optional: Connect a second fiber cable on the remaining channel for fiber redundancy.
12. Wait for at least 45 seconds after connecting the fiber cables.
13. Launch the RMCT again for the newly-installed 1756-RM2 modules.
14. On the RMCT Configuration tab, from the Auto Synchronization pull-down menu, choose your original value.
15. Synchronize the system again (if it is not already qualified) by using the RMCT.

## Replace the 1756-EN2T Modules

This section describes how to replace ControlLogix EtherNet/IP communication modules in a ControlLogix enhanced redundancy system.

You can replace EtherNet/IP communication modules in this enhanced redundancy system as follows:

- Replace 1756-EN2T/C (or earlier) modules with 1756-EN2T/D modules.

---

### IMPORTANT

The following section describes the requirements and tasks used to replace 1756-EN2T modules with 1756-EN2T/D modules.

For example, before replacing 1756-EN2T modules, make sure you have installed the correct firmware on all 1756-EN2T/D modules.

---

You can replace 1756-EN2T modules with 1756-EN2T/D using the following methods:

- [Synchronization and Switchover - Method 1](#) - Use this method if either of the following conditions exist:
  - The module being replaced is a 1756-EN2T/D module in the primary chassis of a system using revision 16.081\_kit2 (10.006 firmware).
  - The module being replaced is a 1756-EN2T/C (or earlier) module in the primary chassis of a system using revision 16.081 or later and its IP address is not set via rotary switches and Electronic keying is set to Disabled or Compatible keying.

For more information on this method, see [page 53](#).
- [Synchronization and Switchover - Method 2](#) - Use this method if the following conditions exist:
  - The enhanced redundancy system is revision 16.081, 16.081\_kit1, 16.081\_kit2, 16.081\_kit3, 16.081\_kit4, or 16.081\_kit5.
  - The 1756-EN2T/C (or earlier) module is installed in a primary chassis.
  - The 1756-EN2T/C (or earlier) module's IP address was set via the rotary switches.
  - Electronic keying is set to Disabled or Compatible keying only.
  - For more information on this method, see [page 56](#).
- [Upgrade from an Enhanced Redundancy Revision](#) You must use this method if either of the following condition occurs:
  - If you are upgrading for an enhanced redundancy system, revisions 16.054Enh or 16.80.
  - If you are upgrading an enhanced redundancy system, revisions 16.081 to 16.081\_kit5 with Electronic keying is set to Exact Match.

For more information on this method, see [page 28](#).

---

**IMPORTANT**

Consider the following:

- Before replacing 1756-EN2T/C (or earlier) modules, make sure you have installed the correct firmware on all 1756-EN2T/D modules.
  - When you upgrade 1756-EN2T/C (or earlier) modules to 1756-EN2T/D modules, you must do so in pairs. If not the system cannot synchronize after a switchover.
- 

## Synchronization and Switchover - Method 1

You can replace 1756-EN2T/C (or earlier) modules with 1756-EN2T/D modules, or you can upgrade or replace 1756-EN2T/D modules which have 10.006 firmware using synchronization and switchover if the following conditions exist:

- The RSLogix 5000 software project allows 1756-EN2T modules Electronic Keying = Compatible Module or Disable Keying.
- The 1756-EN2T/D modules in the primary chassis that have IP addresses that was set via any method.
- The 1756-EN2T/C (or earlier) modules in the primary chassis of an enhanced redundancy system prior to revision 16.081\_kit3 have IP addresses that were set via software, that is, RSLogix 5000 or RSLinx Classic software. For example, IP addresses set via rotary switches.

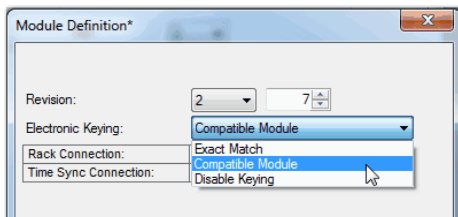
Complete these steps to replace 1756-EN2T/C (or earlier, or 1756-EN2T/D modules with 10.006 firmware) modules with 1756-EN2T/D modules.

1. Make sure the existing and replacement modules use the same IP address, Network Mask, and Gateway addresses.
2. If necessary, upgrade the recent Redundancy Module Configuration tool (RMCT) version 8.02.01.

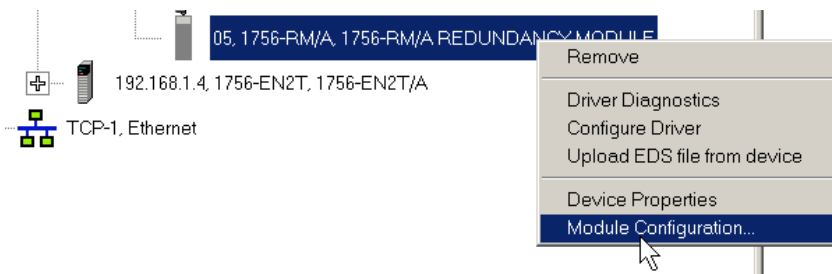
See [Upgrade the Redundancy Module Configuration Tool \(RMCT\) on page 30](#) for instructions,

3. In the RSLogix 5000 software, go online with the primary controller.

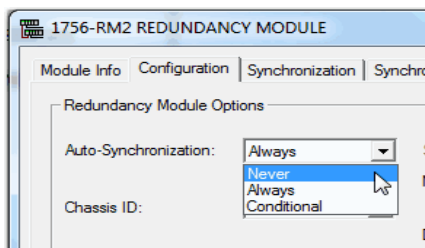
- Verify Electronic Keying is set to Compatible Module or Disable Keying.



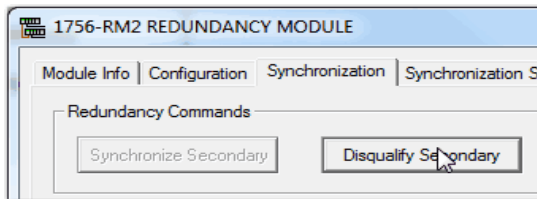
In the RSLinx Classic software, start the RMCT for the 1756-RM module in the primary chassis



- On the Configuration tab, from the Auto-Synchronization pull-down menu, choose Never.



- Click Apply.
- On the Synchronization tab, click Disqualify Secondary.

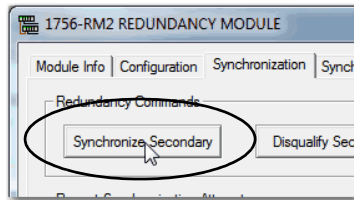


- Turn off power to the secondary chassis.
- Remove the 1756-EN2T module from the secondary chassis.
- If necessary, configure the 1756-EN2T/D module with the correct IP address before inserting it into the disqualified secondary chassis.
- Insert the 1756-EN2T/D module into the secondary chassis and turn on power to the chassis.

12. Verify that the Synchronization Status tab indicates the modules are fully compatible.

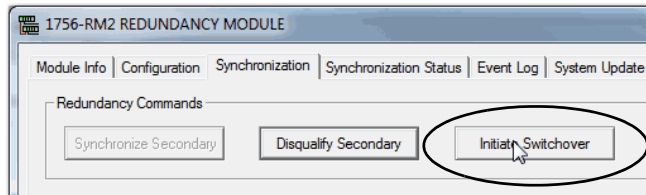
	Module Revision	Secondary Readiness	State	Compatibility
3	20.55	Disqualified	Primary	Full
	5.8	Disqualified	Primary	Full

13. On the Synchronization tab, synchronize the secondary chassis.

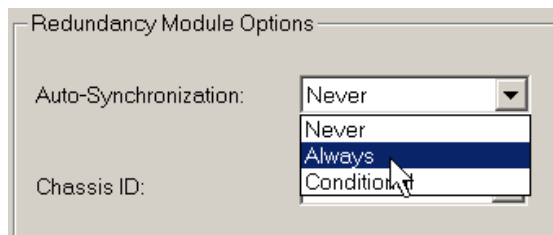


Wait for synchronization to complete.

14. Initiate a switchover.



15. Turn off power to the secondary chassis.
16. Remove the 1756-EN2T module from the secondary chassis.
17. If necessary, configure the 1756-EN2T/D module with the correct IP address before inserting it into the secondary chassis.
18. Insert the 1756-EN2T/D module into the secondary chassis and turn on power to the chassis.
19. On the Configuration tab, from the Auto-Synchronization pull-down menu, choose Always.



20. Click Apply, Yes, and OK.
21. Verify that the secondary chassis has qualified.

## Synchronization and Switchover - Method 2

Complete the tasks listed in the following table to replace an existing 1756-EN2T module with a 1756-EN2T/D module.

Task	Page
Before You Begin	57
Upgrade Workstation Software	57
Upgrade the Redundancy Module Configuration Tool (RMCT)	57
Verify Your RMCT Version	57
Download and Install Redundancy Firmware Bundle	58
Update EDS Files	59
Prepare the Redundant Chassis for the Firmware Upgrade	59
Update the RSLogix 5000 Software Project	59
Replace the 1756-EN2T Module in Secondary Chassis	59

Use this method if the following conditions exist:

- The enhanced redundancy system is revision 16.081, 16.081\_kit1, 16.081\_kit2, 16.081\_kit3, 16.081\_kit4, or 16.081\_kit5
- The 1756-EN2T/C (or earlier) module is installed in a primary chassis.
- The 1756-EN2T/C (or earlier) module's IP address was set via the rotary switches.

---

**IMPORTANT** If the enhanced redundancy system is revision 16.054 Enhanced or 16.080, you must use the procedures described in [Upgrade from an Enhanced Redundancy Revision on page 28](#) to upgrade to enhanced redundancy system, revision 16.081\_kit2 or later.

---



### Before You Begin

Complete the tasks described on [page 28](#) before proceeding.

### Upgrade Workstation Software

---

**IMPORTANT** Skip this step if you are replacing 1756-EN2T modules in a system of revision 16.081, 16.081\_kit1, 16.081\_kit2, or 16.081\_kit3.

---

Complete the tasks described on [page 29](#) before proceeding.

### Upgrade the Redundancy Module Configuration Tool (RMCT)

Complete the steps described on [page 30](#).

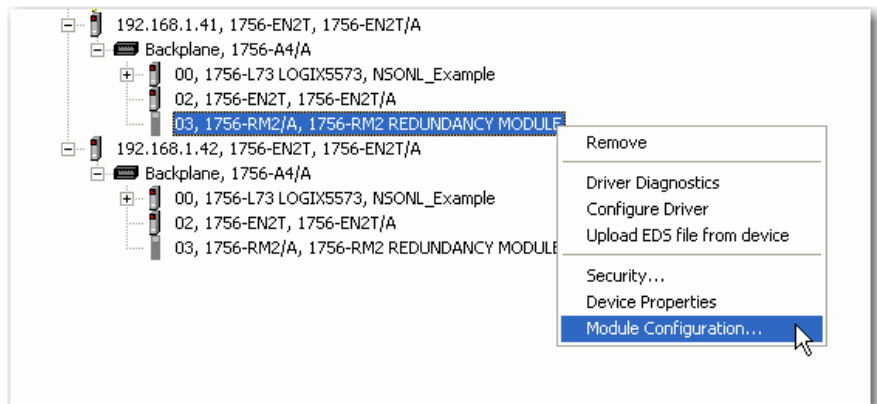
### Verify Your RMCT Version

Complete these steps to check or verify the version of the Redundancy Module Configuration Tool (RMCT) you have installed.

**TIP** The RMCT launches at the version that is compatible with the 1756-RM module firmware that is currently installed.

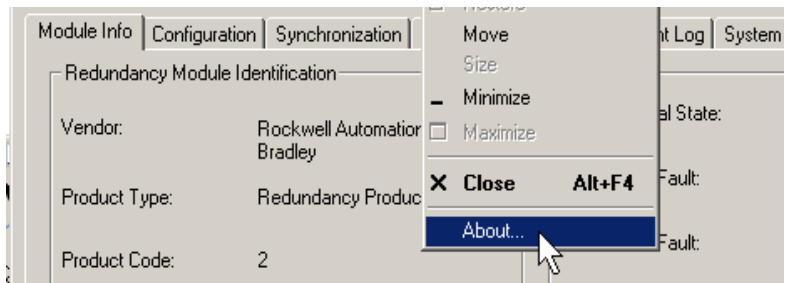
If you have not upgraded your 1756-RM module firmware after upgrading your RMCT version, the RMCT version that is indicated may not reflect the version you upgraded to.

1. In the RSLinx Classic software, start the RMCT for the 1756-RM module in the primary chassis.

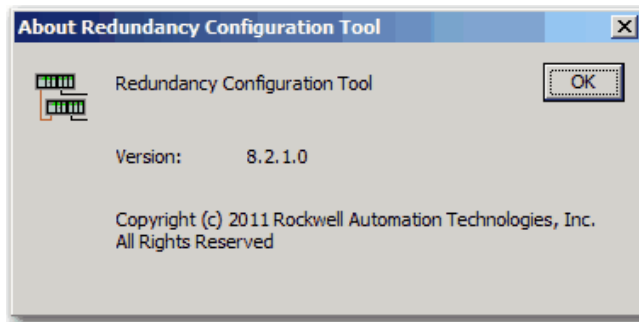


The Module Configuration dialog box opens.

2. Right-click the title bar and choose About.



The About dialog box opens and indicates the RMCT version.



*Download and Install Redundancy Firmware Bundle*

Download and install the redundancy firmware revision bundle from the Rockwell Automation Support website at:

<http://rockwellautomation.com/support>

The redundancy firmware bundles are posted in the Downloads section and are classified in the Control Hardware category.

### *Update EDS Files*

If needed, update the EDS files as described on [page 31](#).

### *Prepare the Redundant Chassis for the Firmware Upgrade*

Complete the steps described on [page 32](#).

### *Update the RSLogix 5000 Software Project*

1. Make sure the controller in the secondary chassis is in REM RUN mode.
2. Change your RSLogix 5000 software project as necessary to account for the newly-installed 1756-EN2T/D module in your system.

For example, verify that the module configuration for each new 1756-EN2T module is Electronic Keying = Compatible Module.

---

**IMPORTANT** When electronic keying is changed in module configuration the connection to that module is interrupted.

---

### *Replace the 1756-EN2T Module in Secondary Chassis*

Complete the following steps.

1. Verify that the new 1756-EN2T/D module uses the correct IP address before inserting it into the disqualified secondary chassis.

We recommend that you set the IP address on the new 1756-EN2T/D module in a remote chassis outside the RCP.

Use one of the following methods to set a static IP address:

- Module switches
- BOOTP/DHCP server - With this method, after setting the address, click Disable BOOTP/DHCP so the IP address remains the same after future power cycles to the module.
- RSLinx Classic software

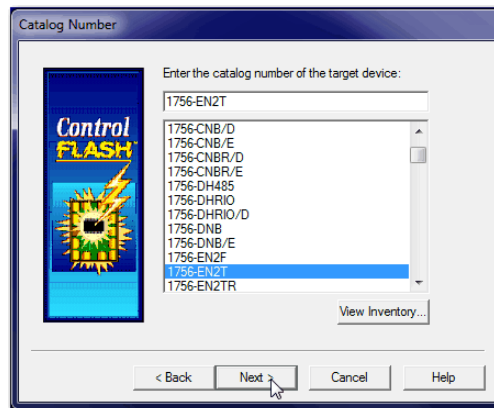
---

**IMPORTANT** Use the same method to set the IP address for the new 1756-EN2T module as was used to set the IP address on the 1756-EN2T module it is replacing. For example, if you used rotary switches to set the IP address, use rotary switches again.

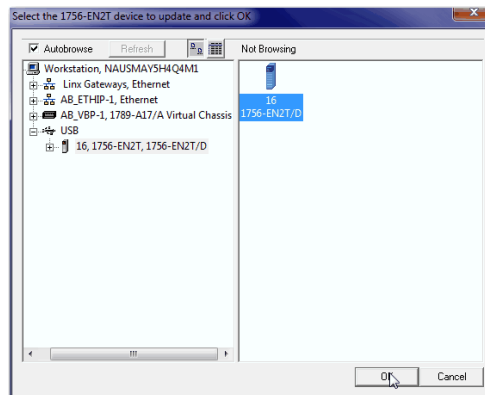
---

For more information on how to set the IP address for an EtherNet/IP communication module, see the EtherNet/IP Network Configuration User Manual, publication [ENET-UM001](#).

2. Verify that the new secondary 1756-EN2T/D module uses the correct firmware revision.
3. If the module firmware revision needs to be updated, we recommend that you complete the following steps in a chassis outside the RCP:
  - a. Launch ControlFLASH software and click Next.
  - b. Select 1756-EN2T and click Next.



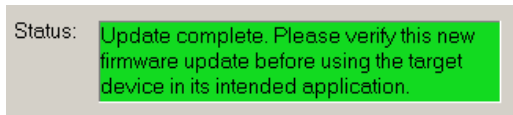
- c. Browse to the 1756-EN2T/D module.



- d. Click OK.
- e. Select the firmware revision and click Next.
- f. Click Finish.

The firmware update process begins.

When the update is complete, the Update status dialog box indicates completion.



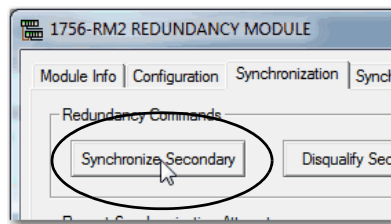
4. Insert the new 1756-EN2T/D module into the secondary chassis.

After the 1756-EN2T/D module powers up, the configured IP address increments by one.

5. Connect the new 1756-EN2T/D module to the EtherNet/IP network.
6. Verify that the Synchronization Status tab indicates the modules are fully compatible.

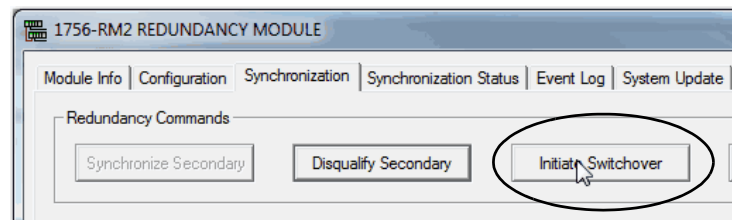
Slot	% Complete	Module Name	Module Revision	Secondary Readiness	State	Compatibility
0	0	1756-L73/A LOGIX5573	20.55	Disqualified	Primary	Full
1	--	<empty>	--	--	--	--
2	0	1756-EN2T/C	5.8	Disqualified	Primary	Full

7. On the Synchronization tab, synchronize the secondary chassis.



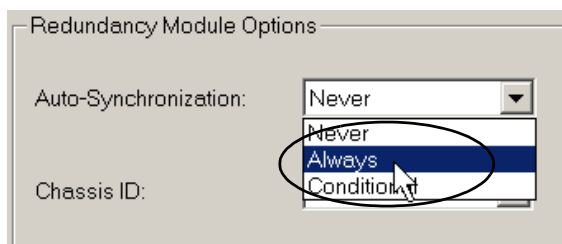
Wait for synchronization to complete.

8. Initiate a switchover.



9. Turn off power to the secondary chassis.
10. Remove the 1756-EN2T module from the secondary chassis.
11. If necessary, configure the 1756-EN2T/D module with the correct IP address before inserting it into the secondary chassis.
12. Insert the 1756-EN2T/D module into the secondary chassis and turn on power to the chassis.

13. On the Configuration tab, from the Auto-Synchronization pull-down menu, choose Always.



14. Click Apply, Yes, and OK.
15. Verify that the secondary chassis has qualified.

## Replace the 1756-CN2 Modules

This section describes how to replace ControlLogix ControlNet communication modules in a ControlLogix enhanced redundancy system. You can replace ControlNet communication modules 1756-CN2/B and 1756-CN2R/B modules with 1756-CN2/C, 1756-CN2R/C, 1756-CN2RXT/C, or 1 1756-CN2RK/C modules.

---

### IMPORTANT

#### ControlNet Communication Modules

- References to the 1756-CN2/B modules also apply to the 1756-CN2R/B, and 1756-CN2RXT/B modules.
  - References to the 1756-CN2/C modules also apply to the 1756-CN2R/C, 1756-CN2RXT/C, and 1756-CN2RK/C, modules.
  - Catalog numbers 1756-RM, 1756-RM2 and 1756-RM2XT refer any series modules.
- 

---

### IMPORTANT

The following section describes the requirements and tasks used to replace 1756-CN2 modules with 1756-CN2/C modules.

The same requirements and tasks apply when you replace 1756-CN2R modules with 1756-CN2R/C modules with the only differences being between specific catalog numbers and series levels.

For example, before replacing 1756-CN2/B modules, make sure you have installed the correct firmware on all 1756-CN2/C modules.

---

You can replace the 1756-CN2 modules with 1756-CN2/C by using the following methods:

- [Synchronization and Switchover for the 1756-CN2 Modules](#) - Use this method if the module being replaced is a 1756-CN2 module that is in a system revision 16.081, 16.081\_kit1, 16.081\_kit2, 16.081\_kit3, 16.081\_kit4, or 16.081\_kit5. Electronic keying is set to Disabled or Compatible keying.  
For more information on this method, see [page 64](#).
- [Upgrade from an Enhanced Redundancy Revision](#) - You must use this method
  - if you are upgrading for an enhanced redundancy system, revision 16.054Enh to revision 16.081\_kit4 or 16.081\_kit5.
  - if you are upgrading for an enhanced redundancy system, revisions 16.054Enh or 16.80.
  - if you are upgrading an enhanced redundancy system, revisions 16.081 to 16.081\_kit5 with Electronic keying is set to Exact Match.

For more information on this method, see [page 28](#).

## Synchronization and Switchover for the 1756-CN2 Modules

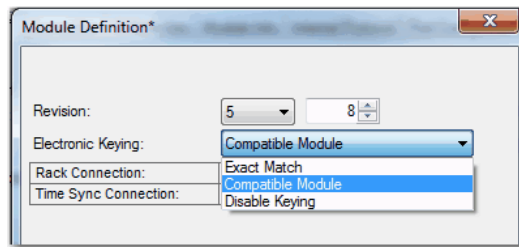
**IMPORTANT** When you upgrade 1756-CN2/B modules to 1756-CN2/C modules, you must do so in pairs. If not the system cannot synchronize after a switchover.

You can replace 1756-CN2 modules with 1756-CN2/C modules without using the redundancy system update (RSU) feature if the following conditions exist:

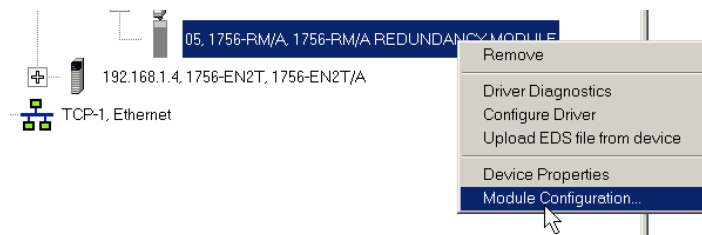
- The module being replaced is a 1756-CN2 module that is in a system revision 16.081, 16.081\_kit1, 16.081\_kit2, 16.081\_kit3, 16.081\_kit4, or 16.081\_kit5.

Complete these steps to replace 1756-CN2 modules with 1756-CN2/C modules.

1. Make sure the existing module and replacement module use the same ControlNet node address.
2. If necessary, upgrade the recent Redundancy Module Configuration tool (RMCT).
3. If you are using a 1756-RM2, upgrade the firmware to 20.005.
4. In the RSLogix 5000 software, go online with the primary controller.
5. Verify Electronic Keying is set to Compatible Module or Disable Keying.



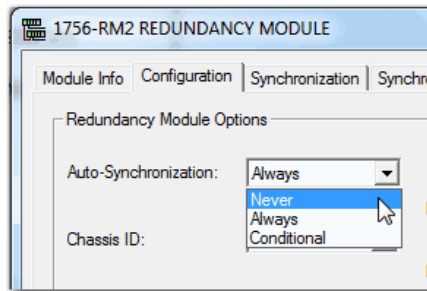
6. In the RSLinx Classic software, start the RMCT for the 1756-RM module in the primary chassis



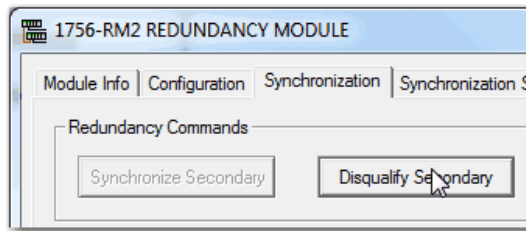
7. On the Configuration tab, from the Auto-Synchronization pull-down menu, choose Never.
  - a. Start RSLinx Classic Software.
  - b. Select Communications and choose RSWho.



- c. Open the branches of your network until you find the 1756-RM or 1756-RM2 module in the primary chassis.
  - d. Right-click the 1756-RM or -RM2, and choose Module Configuration.
8. On the Configuration tab, from the Auto-Synchronization pull-down menu, choose Never.



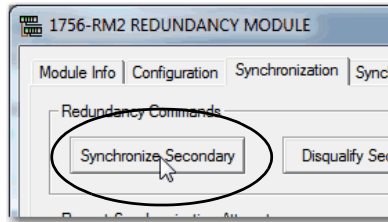
9. Click Apply.
10. On the Synchronization tab, click Disqualify Secondary.



11. Turn off power to the secondary chassis.
12. Remove the 1756-CN2/B modules from the secondary chassis.
13. Make sure that the node addresses of the replacement ControlNet modules match the existing modules.
14. Insert each 1756-CN2/C module into the secondary chassis, reconnect the module to the network, and turn on power to the chassis.
15. If you have not already updated the firmware of the 1756-CN2/C modules, use the ControlFlash software to update the firmware of each 1756-CN2/C module in secondary chassis.
16. Verify that the Synchronization Status tab indicates the modules are fully compatible.

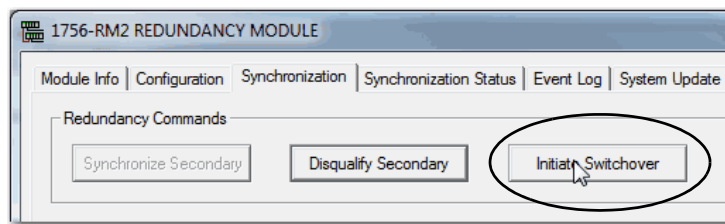
Slot	% Complete	Module Name	Module Revision	Secondary Readiness	State	Compatibility
0	100	1756-L75/B LOGIX5575	20.54	Synchronized	Primary	Full
1	100	1756-L75/B LOGIX5575	20.54	Synchronized	Primary	Full
2	100	1756-CN2R/C	25.4	Synchronized	Primary	Full
3	100	1756-CN2R/C	25.4	Synchronized	Primary	Full
4	100	1756-CN2R/B	20.20	Synchronized	Primary	Full
5	100	1756-CN2R/B	20.20	Synchronized	Primary	Full
6	100	1756-CN2R/C	25.4	Synchronized	Primary	Full
7	100	1756-CN2R/C	25.4	Synchronized	Primary	Full
8	--	<empty>	--	--	--	--
9	100	1756-EN2T/B	5.8	Synchronized	Primary	Full
10	--	<empty>	--	--	--	--
11	--	<empty>	--	--	--	--
12	100	1756-RM2/A REDUNDAN...	20.5	Synchronized	Primary	Full

- On the Synchronization tab, synchronize the secondary chassis.

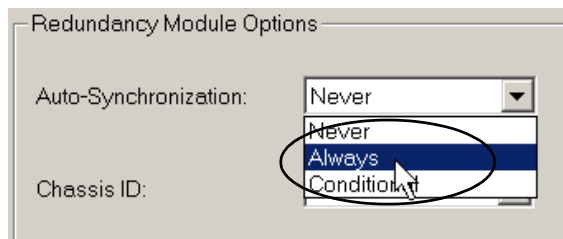


Wait for synchronization to complete.

- Initiate a switchover.



- Turn off power to the secondary chassis.
- Remove the 1756-CN2 modules from the secondary chassis.
- Make sure to match the node address of replacing the ControlNet module with existing module.
- Insert each 1756-CN2/C module into the secondary chassis, reconnect the module to the network, and turn on power to the chassis.
- If you have not already updated the firmware of the 1756-CN2/C modules, use ControlFLASH software to update the firmware of each 1756-CN2/C module in secondary chassis.
- On the Configuration tab, from the Auto-Synchronization pull-down menu, choose Always.



- Click Apply, Yes, and OK.
- Verify that the secondary chassis has qualified.

## Upgrade Ethernet Modules when Rotary Switches are Set between 2...254

This section includes the procedure to upgrade 1756-EN2T/C (or earlier) modules when the modules' rotary switches are set between 2...254 and you are unable to interrupt the primary.

### IMPORTANT

Remember the following before using this section:

- This procedure must be executed before the Redundancy System Update procedure.
- This is a change from prior releases' upgrade procedures.
- **You must physically be present** at the location of the redundant chassis to do this upgrade.
- The term 1756-RM is synonymous with 1756-RM2 in the text and graphics throughout this section.

Before beginning the steps in this section, download and install the redundancy firmware revision bundle from the Rockwell Automation Support website at:

<http://rockwellautomation.com/support>

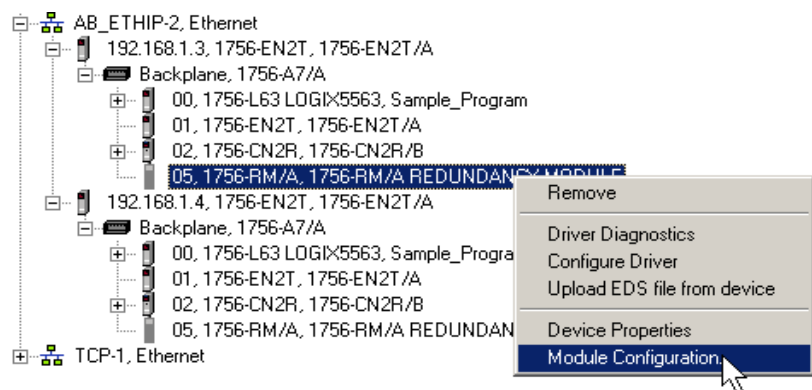
The redundancy firmware bundles are posted in the Downloads section and are classified in the Control Hardware category.

If your system is controlling a process and by using rotary switches, follow these steps.

1. Set the mode switch of the primary and secondary controllers to REM.

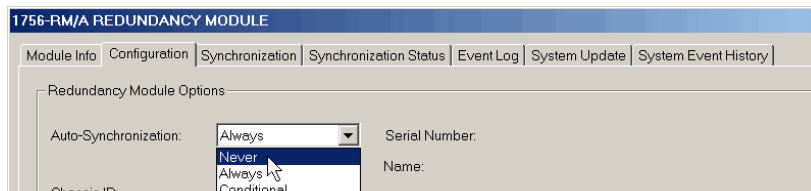
If the redundant controllers in both chassis of the redundant chassis pair are not in Remote Program (REM) mode, the redundancy firmware upgrade cannot be completed.

2. In the RSLinx Classic software, start the RMCT for the 1756-RM module in the primary chassis.

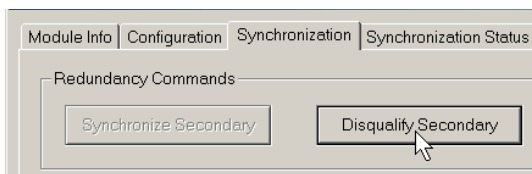


3. Click the Configuration tab.

- 4. From the Auto-Synchronization pull-down menu, choose Never.

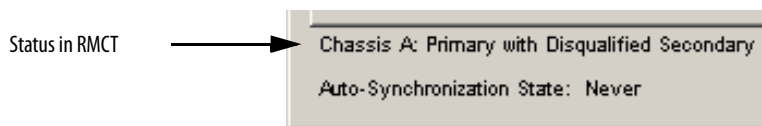


- 5. Click Apply, and then click Yes.
- 6. Click the Synchronization tab.



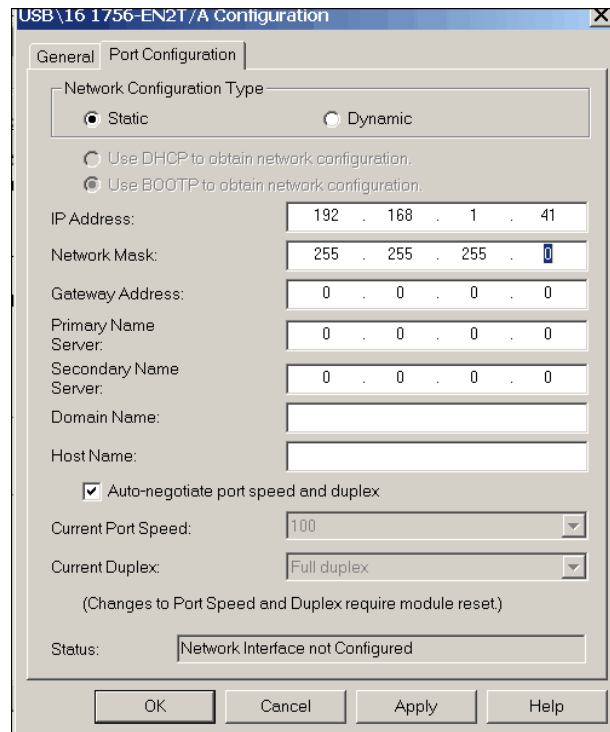
- 7. Click Disqualify Secondary, and then click Yes.

The secondary chassis is disqualified as indicated by the RMCT at the bottom-left of the RMCT and on the redundancy module's status display.



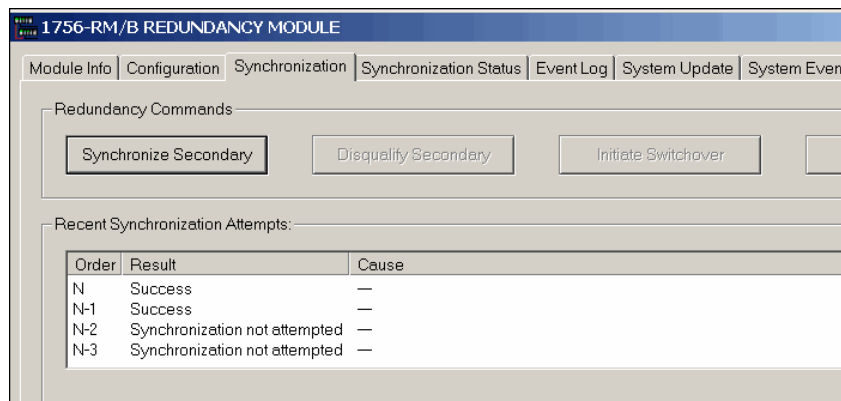
- 8. Click OK.

9. Make a note of the primary Ethernet module's Port Configuration including the following:
- IP Address
  - Network Mask
  - Gateway Address

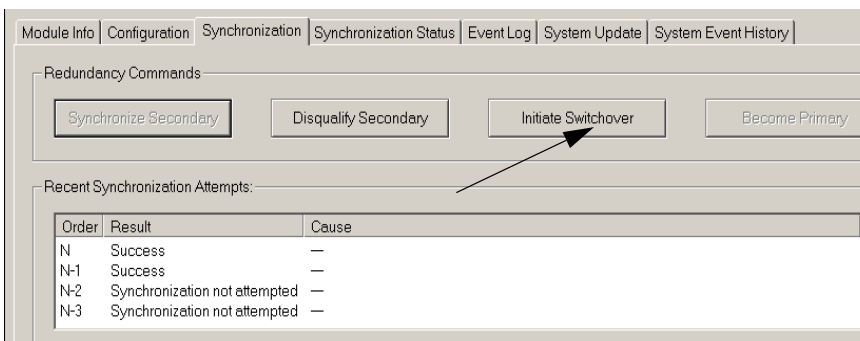


10. Disconnect the Ethernet cables from the secondary Ethernet module.
11. Remove the secondary Ethernet module from the secondary chassis.
12. Record the original rotary switch settings.
13. Set the module switches to 888 and reinsert it into the secondary chassis.
14. Remove the module from the secondary chassis.
15. Set the switches to 999 and reinsert the module into the secondary chassis.

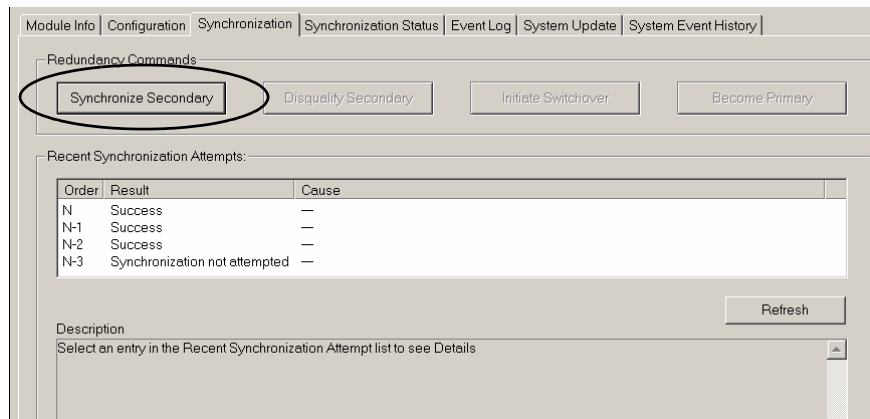
16. Bridging across the backplane (or via the Ethernet module's USB port), configure the newly added 1756-EN2T/D module's Port Configuration to match the primary Ethernet module's Port Configuration from [step 9](#).
17. After the update completes, connect the Ethernet cable to the secondary Ethernet module, cycle power to the chassis, and wait for communication to resume on the network.
18. Check the Synchronization tab to verify that compatibility is Full for all modules in the chassis.
19. Repeat [steps 9...17](#) for all Ethernet modules that have their rotary switches set between 2...254.
20. In RSLinx Classic software, browse this chassis to the primary 1756-RM module.
21. Right-click to select Module Configuration to open the RMCT.
22. Click the Synchronization tab in the RMCT.



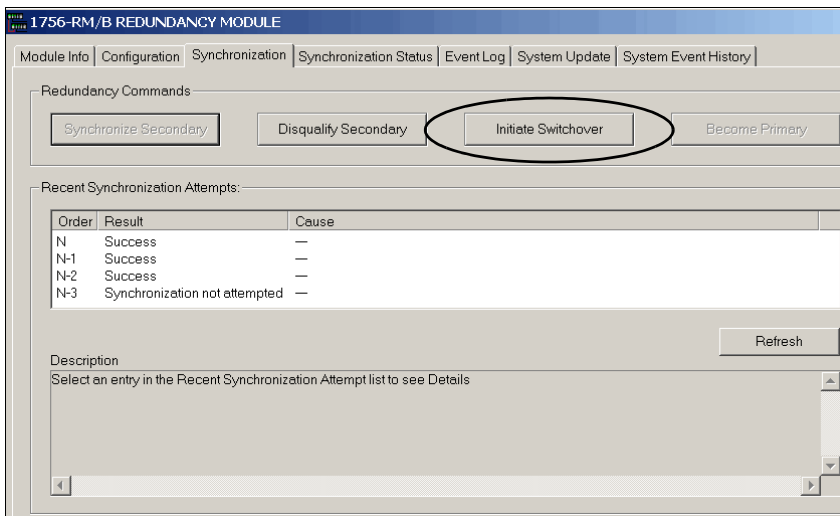
23. Click Synchronize Secondary, and then click Yes.
24. After the redundant chassis pair synchronizes, click the Synchronization tab.
25. Click Initiate Switchover, and then click Yes.



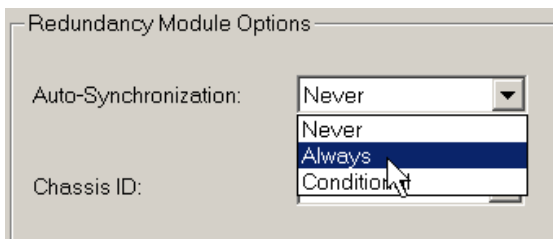
26. In the RSLinx Classic software, select Module Configuration on the new primary Ethernet communication module.
27. Click the Port Configuration tab and change the Gateway address from 0.0.0.0 to 192.168.1.1.
28. Click Apply, and then click OK.
29. Disconnect the Ethernet cable(s) from the secondary Ethernet module.
30. Reconnect the Ethernet cable(s) to the secondary Ethernet module and wait for communication to resume on the network.
31. Repeat [steps 26...30](#) for all Ethernet modules that have their rotary switches set between 2...254.
32. In RSLinx Classic software, browse to the primary 1756-RM module.
33. Right-click the primary 1756-RM module and choose Module Configuration to open the RMCT.
34. Check the Synchronization tab to verify that compatibility is Full for all modules in the chassis.
35. Click Synchronize Secondary, and then click Yes.



36. On the Synchronization tab click Initiate Switchover, and then click Yes.



37. Remove the new secondary Ethernet module from the chassis and reset the rotary switches back to their original setting from 999.
38. Reinsert the secondary Ethernet module back in the chassis and wait until network communication resumes.
39. Check the Synchronization tab to verify that compatibility is Full for all modules in the chassis.
40. Repeat [steps 37...38](#) for all Ethernet modules that have their rotary switches set between 2...254.
41. Wait 45 seconds.
42. On the Configuration tab, from the Auto-Synchronization pull-down menu, choose Always.



43. Click Apply, Yes, and OK.

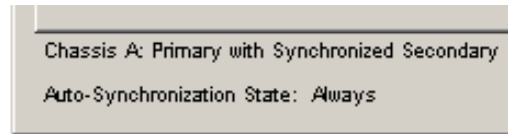


## Store a Project to Nonvolatile Memory while Your Process is Running

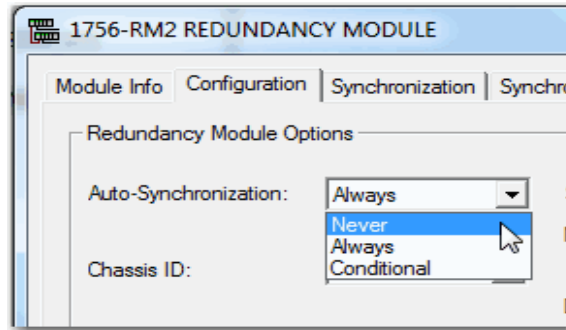
Use this procedure to store an updated project and firmware to the nonvolatile memory of the controller while your process is running.

1. Verify that the redundant chassis are synchronized.

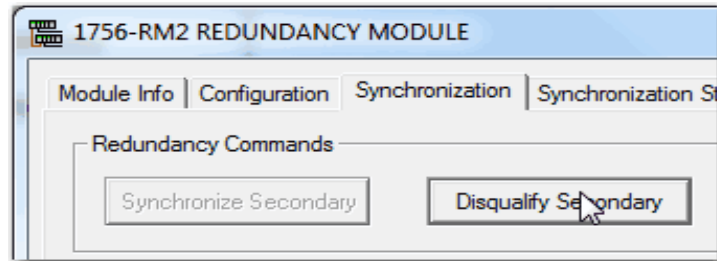
If the redundant chassis are not synchronized, synchronize them before continuing with the next step.



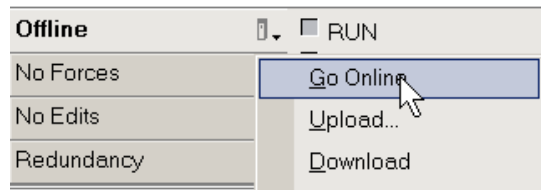
2. In the RMCT, click the Configuration tab and choose Never from the Auto-Qualification pull-down.



3. In the Synchronization tab, click Disqualify Secondary.



4. In RSLogix 5000 programming software, go online with the secondary controller.



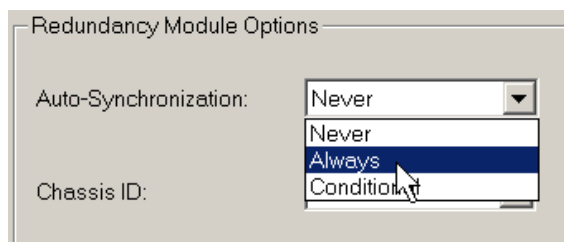
5. Use the steps described in the Logix5000 Controllers Nonvolatile Memory Programming Manual, publication [1756-PM017](#) to store the project.

---

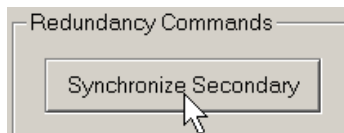
**IMPORTANT** Remain offline after you have stored the project to nonvolatile memory. You must stay offline through the remainder of this procedure.

---

6. In the RMCT, set the Auto-Qualification parameter according to your preference.



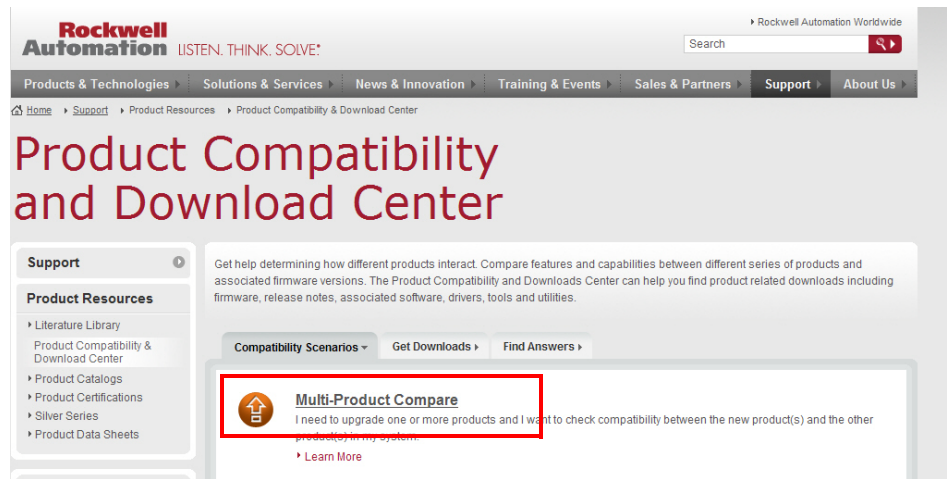
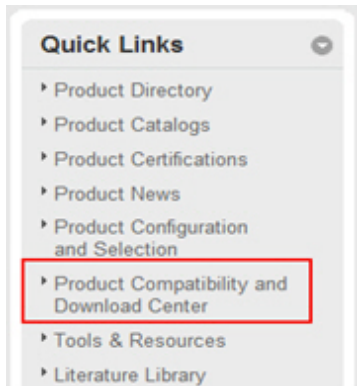
7. Synchronize the chassis.



## Access Product Release Notes

Product release notes for the products used with this enhanced redundancy firmware bundle are available online within the Product Compatibility and Download Center.

1. From the Quick Links list on <http://www.ab.com>, choose Product Compatibility and Download Center.



2. From the Compatibility Scenarios tab or the Get Downloads tab, search for and choose your product.

### Start by selecting products

Product Search:

*Example: 1756-L61, L65, Logix, Ethernet*

*You can also filter by product category or family.*

3. Click the download icon  to access product release notes.

## Additional Resources

These documents contain additional information concerning related products from Rockwell Automation.

Resource	Description
ControlLogix Redundancy System User Manual, publication <a href="#">1756-UM523</a>	Provides design, installation, and troubleshooting information specific to the standard redundancy system.
FactoryTalk Batch PhaseManager User's Guide, publication <a href="#">BATCHX-UM010</a>	This a guide for those using PhaseManager, FactoryTalk Batch, and RSLogix 5000 software to develop a batch automation system using phase logic for Logix5000 controllers.
PhaseManager User Manual, publication <a href="#">LOGIX-UM001</a>	This manual provides details about using PhaseManager software and includes details about tags associated with the PHASE data type.
Rockwell Automation Technical Support Knowledgebase, available at <a href="http://www.rockwellautomation.com/knowledgebase/">http://www.rockwellautomation.com/knowledgebase/</a>	Provides details about how to assemble and mount the controller, how to upgrade firmware, and controller technical specifications.
ProcessLogix and ControlLogix System Redundancy Module Installation Instructions, publication <a href="#">1757-IN092</a>	Contains information on how to install the 1757-SRM, Series B ProcessLogix™ and ControlLogix System Redundancy Module into the ProcessLogix or ControlLogix Redundant chassis pair.
ControlFLASH Firmware Upgrade Kit Quick Start, publication <a href="#">1756-QS105</a>	Contains information on how to upgrade module firmware.
ControlLogix Controllers User Manual, publication <a href="#">1756-UM001</a>	Contains information on how to install, configure, program, and operate a ControlLogix system.
Product Certifications website, <a href="http://www.ab.com">http://www.ab.com</a>	Provides declarations of conformity, certificates, and other certification details.
ProcessLogix and ControlLogix System Redundancy Module Installation Instructions, publication <a href="#">1757-IN092</a>	Contains information on how to install the 1757-SRM, Series B ProcessLogix and ControlLogix System Redundancy Module into the ProcessLogix or ControlLogix Redundant chassis pair.
ControlLogix Redundancy System User Manual, publication <a href="#">1756-UM523</a>	Contains information about ControlLogix redundancy systems and media.

You can view or download publications at <http://www.rockwellautomation.com/literature>. To order paper copies of technical documentation, contact your local Allen-Bradley distributor or Rockwell Automation sales representative.

**Notes:**

# Rockwell Automation Support

Rockwell Automation provides technical information on the Web to assist you in using its products.

At <http://www.rockwellautomation.com/support> you can find technical and application notes, sample code, and links to software service packs. You can also visit our Support Center at <https://rockwellautomation.custhelp.com/> for software updates, support chats and forums, technical information, FAQs, and to sign up for product notification updates.

In addition, we offer multiple support programs for installation, configuration, and troubleshooting. For more information, contact your local distributor or Rockwell Automation representative, or visit <http://www.rockwellautomation.com/services/online-phone>.

## Installation Assistance

If you experience a problem within the first 24 hours of installation, review the information that is contained in this manual. You can contact Customer Support for initial help in getting your product up and running.

United States or Canada	1.440.646.3434
Outside United States or Canada	Use the <a href="#">Worldwide Locator</a> at <a href="http://www.rockwellautomation.com/rockwellautomation/support/overview.page">http://www.rockwellautomation.com/rockwellautomation/support/overview.page</a> , or contact your local Rockwell Automation representative.

## New Product Satisfaction Return

Rockwell Automation tests all of its products to help ensure that they are fully operational when shipped from the manufacturing facility. However, if your product is not functioning and needs to be returned, follow these procedures.

United States	Contact your distributor. You must provide a Customer Support case number (call the phone number above to obtain one) to your distributor to complete the return process.
Outside United States	Please contact your local Rockwell Automation representative for the return procedure.

## Documentation Feedback

Your comments will help us serve your documentation needs better. If you have any suggestions on how to improve this document, complete this form, publication [RA-DU002](#), available at <http://www.rockwellautomation.com/literature/>.

Rockwell Automation maintains current product environmental information on its website at <http://www.rockwellautomation.com/rockwellautomation/about-us/sustainability-ethics/product-environmental-compliance.page>.

Allen-Bradley, Rockwell Software, Rockwell Automation, ControlLogix-XI, VersaView, ControlLogix, PhaseManager, PanelView, ProcessLogix, RSView, RSLinx, RSLogix, RSNetWorx, FactoryTalk, and Logix5000 are trademarks of Rockwell Automation, Inc. Trademarks not belonging to Rockwell Automation are property of their respective companies.

Rockwell Otomasyon Ticaret A.Ş., Kar Plaza İş Merkezi E Blok Kat:6 34752 İçerenköy, İstanbul, Tel: +90 (216) 5698400

**[www.rockwellautomation.com](http://www.rockwellautomation.com)**

### Power, Control and Information Solutions Headquarters

Americas: Rockwell Automation, 1201 South Second Street, Milwaukee, WI 53204-2496 USA, Tel: (1) 414.382.2000, Fax: (1) 414.382.4444

Europe/Middle East/Africa: Rockwell Automation NV, Pegasus Park, De Kleetlaan 12a, 1831 Diegem, Belgium, Tel: (32) 2 663 0600, Fax: (32) 2 663 0640

Asia Pacific: Rockwell Automation, Level 14, Core F, Cyberport 3, 100 Cyberport Road, Hong Kong, Tel: (852) 2887 4788, Fax: (852) 2508 1846

Publication 1756-RN650I-EN-E - July 2015

Supersedes Publication 1756-RN650H-EN-E - October 2014

PN-309246

Copyright © 2015 Rockwell Automation, Inc. All rights reserved. Printed in the U.S.A.