

# Quick User Guide DS



## Real-time 960H Digital Video Recorder DS

Rev. 11/08/2012

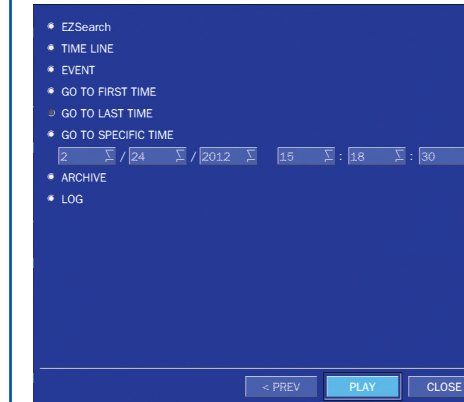
### OSD Main Menu

- To enter the main menu, right click on the mouse and select setup from the submenu or press the setup button on the remote control.
- Enter username and password. The default username is admin and password is 1111.

	Description
EZ SETUP	EZ Setup button. Click this button to go to the EZ Record and EZ Network setup.
SETUP	Setup button. Click this button to go to the setup menu.
AUDIO	Audio button. Click this button to set an audio reception type; (Channel 1 through 16, Audio Mute).
SEARCH	Search button. Click this button to enter the search menu.
SNAPSHOT	Snapshot button. Click this button to create a snapshot. (JPEG STILL IMAGE)
CAMERA PTZ	Pop up the PTZ user interface.
ENABLE MAIN MONITOR SEQUENCE ON/OFF	Sequence button. Click this button to enable sequence function.
ENABLE MANUAL RECORD ON/OFF	Manual Record button. Click this button to enable manual recording.
DISABLE ALARM OUT	Click this button to enable/disable Alarm outputs.
MANUAL DIGITAL DETERRENT	Manually triggers the digital deterrent audio file.
SITE INFORMATION	Press the button to view the record setting of a selected channel.
SYSTEM INFORMATION	Press the button to view the system information.
EXPORT HELP	Displays quick instructions for exporting video.
SYSTEM LOCK	Lock the DVR from user access.
SYSTEM SHUTDOWN	Click this button to shutdown the system.

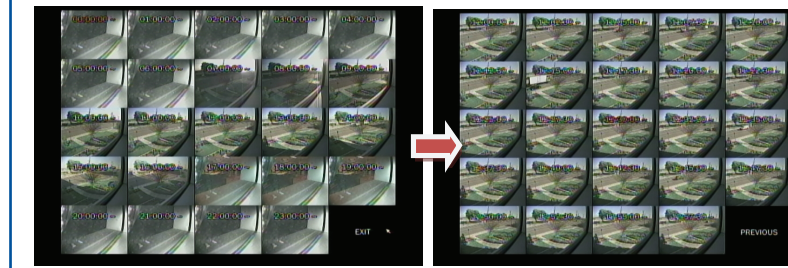
### Playback

- Select SEARCH from the sub-menu



#### EZSearch

- Select EZSEARCH and click NEXT.
- Select the specific MONTH, DATE and click NEXT.
- Select the specific CHANNEL and click NEXT. Thumbnail view of each hour will be shown.
- Double click on the hour of interest. Thumbnail view of each 2.5 minutes within the hour will be shown.
- Double click on the minute thumbnail to begin playback.



### Time Line

- Select TIME LINE and click NEXT.
- Select the specific MONTH, DATE, and click NEXT.
- Select the specific HOUR, MINUTE, and CHANNEL and click PLAY. Playback will begin.

### Event

- Select EVENT and click NEXT.
- Select the specific MONTH, DATE and click NEXT.
- Select the specific EVENT and click PLAY. Playback will begin.

### Specific Time

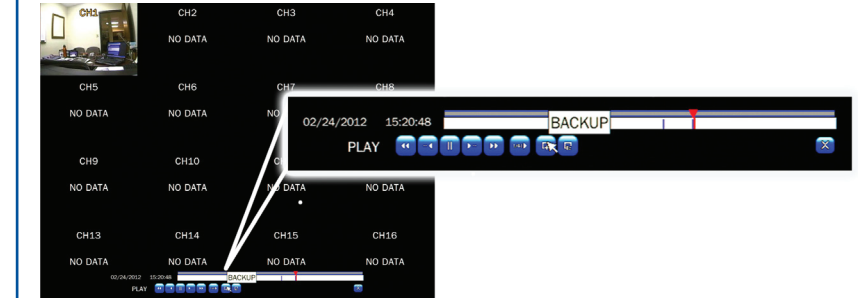
- Select GO TO SPECIFIC TIME and select the specific time to begin playback.
- Click on PLAY to begin playback.

### Export

- Go into playback mode as described in the previous section.

### Backup

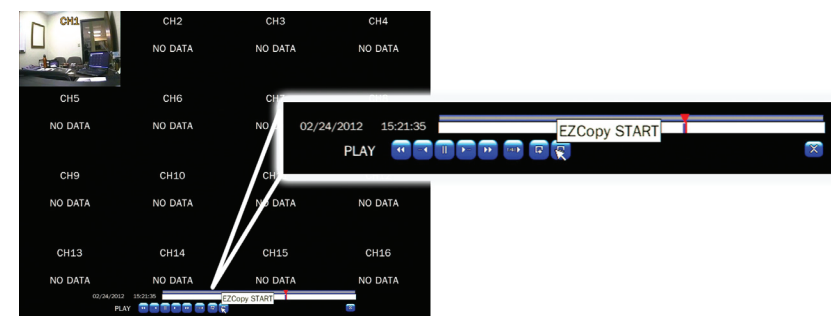
- Click on BACKUP near the bottom of the playback screen.



- Select the ARCHIVE MEDIA TYPE and click NEXT.
  - STILL IMAGE: snapshots
  - NSF: proprietary \*.nsf video format
  - AVI: \*.avi video format, Integrated Subtitle
  - AVI: \*.avi video format, Separated Subtitle, MAC compatible
- Select the MEDIA TYPE (USB DRIVE) and click NEXT.
- Select the specific CHANNEL and DURATION and click START to begin export.

### EZCopy

- Click on EZCOPY START near the bottom of the playback screen. This will begin the start time of the recorded data to be exported.



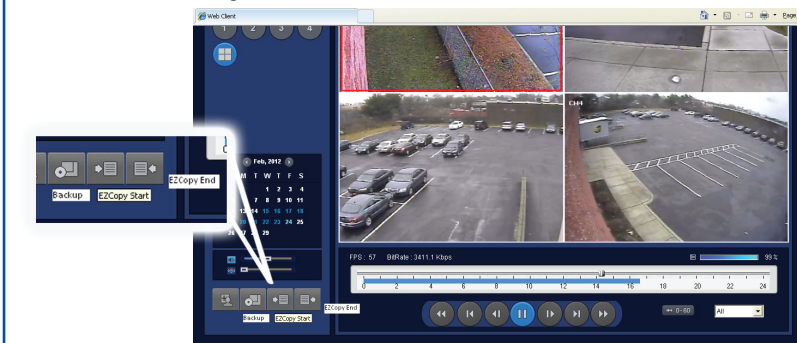
- The DVR will continue to play the recorded video.
- Move time cursor to go to the time to end backup.
- Click on EZCOPY STOP and this will end the data export.
- Select the FILE FORMAT and click NEXT.
- Select the specific CHANNEL and click start to begin export.

### Event

- To export an event, go into Live mode and go to SEARCH from the sub-menu.
- Select EVENT and click NEXT.
- Select the specific MONTH, DATE and click NEXT. The list of events will be shown.
- Select the specific EVENT and click BACKUP.
- Select the MEDIA TYPE (USB DRIVE) and click BACKUP to begin export of event.

### Export via Web-Browser Viewer

- Start Internet Explorer and enter the IP address and port of the DVR.
  - For example [http://\[ip address\] : \[port\]](http://[ip address] : [port]) → <http://192.168.80.6.80>
- The ActiveX controls and plug-ins dialog will be prompted for installation.
- Install the plug-ins.
- Click on CONNECT and enter the IP, port number, username and password of the DVR.
  - The default usernames and passwords are admin / 1111 and user / 1111.
- Click on SEARCH to go into PLAYBACK.



- Click on EZCOPY START near the bottom of the playback screen. This will indicate the start time of the recorded data to be exported.
- The DVR will continue to play the recorded video.
- Move time bar cursor to go to the time to end backup.
- Click on EZCOPY END and this will indicate the end time of the data export.
- Select AVI BACKUP button.
- Select the CHANNEL and FILE PATH and click OK to begin export.

### Viewing DVR via Mobile Devices

The DS provides mobile surveillance software for both the iPhone® and the Android™.

#### iPhone®

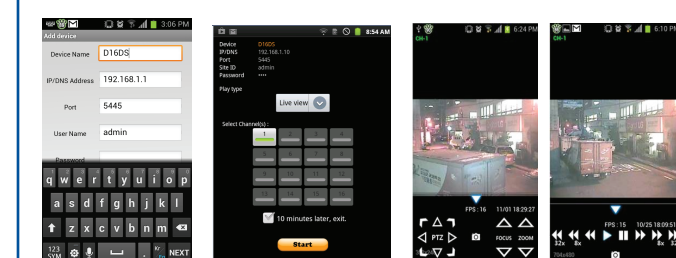
- Search for 'Speco Player' in the Apple App Store and install the app.



- Select the ADD menu and enter site information. Click ADD to save the site information.
- Select the saved site from "Devices"
- Select Playback/Live then click CONNECT.

#### Android™

- Search for 'Speco Player' in the Android™ Market and install the app.



- Select the ADD menu and enter site information. Click ADD to save the site information.
- Select the saved site from "Devices" and select LIVE VIEW or PLAYBACK.
- Select 4 channels to view and click "Start" button.

### SpecoTech Multi-Client Viewer

SpecoTech Multi-Client Viewer Software is a multiple site monitoring client software that allows streaming of video and audio, and transmission of alarm signals from the DVRs over the network. The SpecoTech Multi-Client can display up to 16 DVRs and supports dual monitors. PTZ camera control is also supported by this software.

By attaching a microphone and speaker system to devices on site, the user may make bi-directional audio communication over the network.

Refer to the complete manual for more information.

The SpecoTech Multi-Client Viewer Software and manual are included on the CD.