

Quick-Start Guide

007-SE01-001



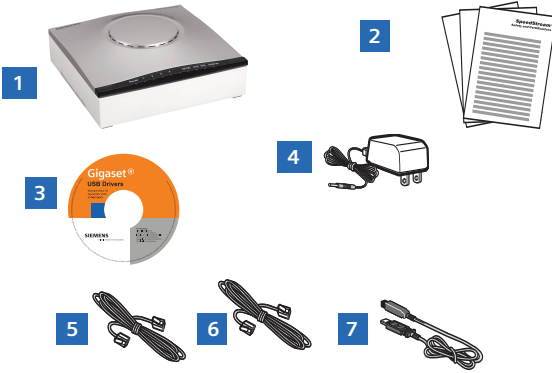
Gigaset[®]

Residential Wireless Gateway

SE567/SE568

Before you begin...

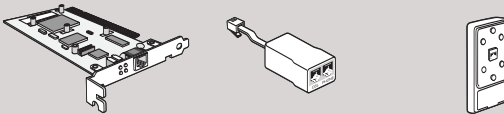
Verify that the following items came with your DSL kit:



- 1 Gigaset® Device
- 2 Documentation
- 3 Software Manual/USB Drivers CD-ROM
- 4 Power Supply
- 5 RJ-45 Ethernet cable
- 6 RJ-11 DSL cable
- 7 USB cable (SE568 only)

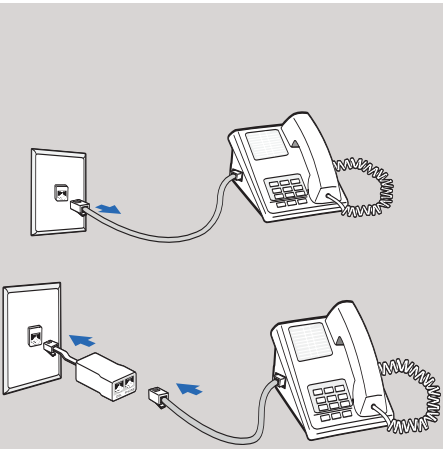
Your service provider may include an Ethernet Adapter, a line filter, and a wall-mount filter in your DSL kit. If you received any of these items, follow the instructions provided in this guide for basic installation. For further assistance installing these items, contact your service provider.

- A PCI Ethernet Adapter
- B Line filter(s)
- C Wall-mount filter



Step 1 > Install Line Filters

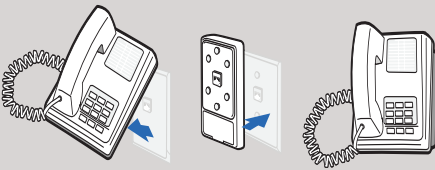
Devices such as fax machines, caller ID boxes, or phones or phones that share the same phone line as your DSL account require a line filter. The line filter prevents noise from disrupting the DSL signal on the phone line. Filters can be in the form of a stand-alone line filter or a wall-mount filter.



Stand-alone Line Filter

For each device that shares the DSL phone line:

1. Unplug the device's cord from the phone jack.
2. Plug the filter into the phone jack.
3. Plug the phone cord (or other device cord) into the filter.



Wall-mount Filter

For a wall-mounted phone, use a wall-mount filter:

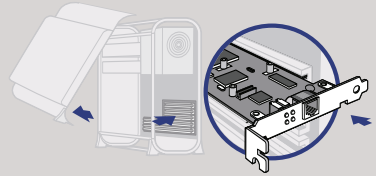
1. Remove the phone from the wall.
2. Connect the wall-mount filter to the wall plate.
3. Reconnect the phone.

Step 2 > Choose an Installation Method

The Gigaset SE567 device can only be connected to an Ethernet port; the Gigaset SE568 can be connected to an Ethernet or a USB port. To connect using an Ethernet port, complete the steps in Option A. To connect to a USB port, complete the steps in Option B.

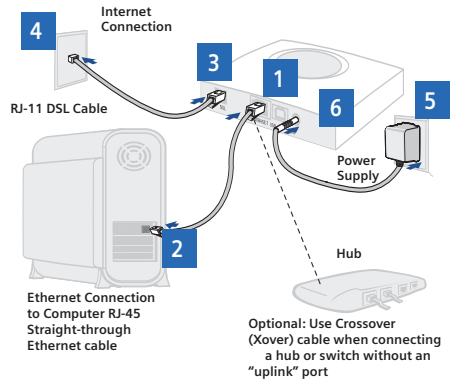
Option A > Ethernet Installation Method

If your computer does not have an Ethernet Adapter installed, install it now. Refer to your Ethernet Adapter manufacturers documentation for complete installation instructions.



Connect the Gigaset® Device

1. Connect the Ethernet cable (RJ-45) to the Ethernet port on the Gigaset device (yellow port).
2. Connect the other end to the Ethernet port on your computer.
3. Plug the DSL cable (RJ-11) into the DSL port on the Gigaset device (gray port).
4. Plug the other end of the DSL cable (RJ-11) into the phone jack.
5. Plug the power adapter into the power outlet and the Gigaset device (black port).
6. Ensure that the Gigaset device is powered on. The power switch is on the right side of the back panel.

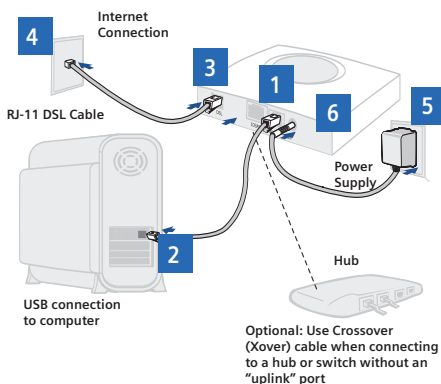


You have completed the installation of your Gigaset hardware. There is no software installation required when using an Ethernet connection. If you have the router model, proceed to Step 3 to configure your router and connect to the Internet.

Option B > USB Installation Method

Connect the Gigaset® Device

1. Connect the USB cable to the USB port on the Gigaset device (blue port).
2. Connect the other end to the USB port on your computer.
3. Plug the DSL cable (RJ-11) into the DSL port on the Gigaset device (gray port).
4. Plug the other end of the DSL cable (RJ-11) into the phone jack.
5. Plug the power adapter into the power outlet and Gigaset device (black port).
6. Ensure the Gigaset device is powered on (power switch located on the right side of back panel).



Windows USB Driver Installation

Software Installation

If you are using connecting the Gigaset device via the USB port, you must install USB drivers. Before installing the software make sure your PC is equipped with Windows® 98, Windows® 98 Second Edition (SE), Windows® 2000 Professional, Windows® Millennium Edition (ME), or Windows® XP; 32MB RAM; Pentium-compatible 166MHz or faster processor; 12MB available hard disk space.

1. Insert the Gigaset® Installation CD in to your CD-ROM drive to automatically start the software installation program. Follow the on-screen directions to complete the installation.
2. After the USB driver is installed, continue with the PC Configuration procedures described on the next page.



If the software installation program does not start automatically, start it manually:

1. Click Start > Run.
2. Browse to setup.exe on the CD and double-click it to start the program.

Macintosh USB Driver Installation

Software Installation

Before installing the software, make sure your system is running OS 8.6 or above. This procedure will restart your computer to complete the installation.

1. Insert the Gigaset® Installation CD into your CD-ROM drive.
2. Open the Gigaset® icon from the desktop.
3. Click Readme.txt. Follow the directions in Read me.txt to complete the software installation.
4. After the USB driver is installed, continue with the PC Configuration procedures described on the next page.

Step 3 > Choose a Configuration Method

The steps required to setup your system for using the Gigaset® depend on whether you use a PC or a Macintosh. Select the appropriate option for your system.

Option A > Configure the PC

1: Configuring Windows®

To setup the Gigaset® device, you must first configure your PC to obtain an IP address from a DHCP server. Follow the procedure below:

Note: The following procedures are for a PC running Windows XP. Please refer to the User Guide on the CD-ROM for help configuring other operating systems.

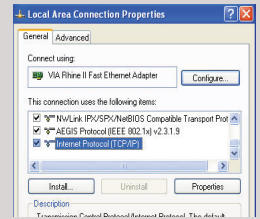
1. Click *Start > Control Panel*.
2. Double-click the *Network Connections* icon.
3. Double-click your *Network Card*.
4. Click *Properties*.
5. Select *Internet Protocol (TCP/IP)*.
6. Click *Properties*.
7. Select *Obtain an IP address automatically*.
8. Select *Obtain DNS server address automatically*.
9. Click *OK* and exit out of the Control Panel.
10. Configure Internet Access using the procedure that follows.

2: Configuring Internet Access

Next, use the procedure below to make sure your PC will use the Gigaset device (and not Dial-up Networking) when connecting to the Internet.

1. Click *Start > Control Panel*.
2. Double-click the *Internet Options* icon.
3. Click the *Connections* tab.

4. Click *Setup*.
5. Click *Next*.
6. Click *Connect to the Internet*.



7. Click *Next*.
8. Click *Setup my connection manually*.
9. Click *Next*.
10. Select *Connect using a broadband connection that is always on*.
11. Click *Next*.
12. Click *Finish*.
13. Configure the Gateway using the procedure *Configuring the Gateway*.

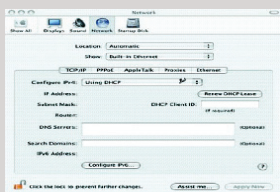


Option B > Configure the Macintosh

To setup the Gigaset® device, you must first configure your computer to obtain an IP address from a DHCP server. Use the procedure below that corresponds to your system's operating system.

Configuring OSX

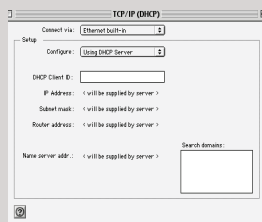
1. Click *Apple > Preferences*.
2. Select the *Network* icon under the *Internet & Network* section.



3. Select *Built-in Ethernet* from the *Show* drop-down menu.
4. Select *Using DHCP Server* from the *Configure IPv4* drop-down menu.
5. Click *Apply Now* and exit the *System Preferences* window.
6. Configure the Gateway using the steps that follow.

Configuring OS9

1. Click *Apple > Control Panels > TCP/IP*.



2. Select *Ethernet* from the *Connect via* drop-down menu.
3. Select *Using DHCP Server* from the *Configure* drop-down menu.
4. Close the window and save the changes.
5. Configure the Gateway using the steps that follow.

Step 4 > Configure the Gateway

Windows ME and XP users: If you have Universal Plug and Play (UPnP) enabled, Windows may detect the Gigaset device upon startup and provide a shortcut to the device on the desktop. The icon will be labeled *Residential Gateway*. Double-click the icon and skip to step 3.

If your PC has not been connected to a broadband modem or other network device, perform the PC configuration procedure below. Remember to restart each PC when finished.

1. Start your Web Browser.
2. In the address bar, type <http://gigaset>, then press Enter. The Gateway Setup Wizard appears to guide you through the setup process.
3. When you have completed the Gateway Setup Wizard, you can connect to the Internet or configure additional options on the Gateway.

Congratulations!

You have completed installing your Gigaset device.

Troubleshooting

LED	Off	Green	Blinking Green	Blinking Red/Green	Red
Power	Power is off.	Power is on.	N/A	Flash write in progress.	- POST in progress. - POST error occurred (if persistent).
Ethernet 1-4	- Power not applied. - No link.	Normal operation, Link okay.	User traffic flowing in either direction.	N/A	N/A
Wireless	- Power not applied. - No link.	Normal operation, Link okay.	Wireless user traffic flowing in either direction.	N/A	N/A
DSL	- Power not applied. - DSL Signal not detected.	DSL line is trained and ready for traffic.	Steady blinking-DSL line is attempting to train.	N/A	N/A
Internet	- Power not applied. - No LAN data activity.	- DSL link and WAN interface are up. - WAN interface has IP Address.	N/A	N/A	N/A
Activity	- Power not applied. - No WAN or LAN activity.	N/A	LAN user traffic flowing in either direction.	N/A	N/A
USB (model SE568 only)	- Power not applied. - No link.	USB connected.	USB user traffic flowing in either direction.	N/A	

Siemens Subscriber Networks, Inc.
 4849 Alpha Road
 Dallas, Texas 75244
 (972) 852-1000
 Fax (972) 852-1001
 usa.800siemens.us@siemens.com
<http://www.siemens.com/subscriber>

Copyright©2006, Siemens Home and Office Communications Devices LLC. All rights reserved. Siemens and the Siemens logo are trademarks of Siemens AG, Germany. All other trademarks are held by their respective companies. Siemens reserves the right to make changes to product specifications at any time without notice.

SIEMENS

Global network of innovation