

D6 XE

TRACK-TYPE TRACTOR



Net Power (1,700 rpm)

ISO 9249:2007/SAE J1349:2011 161 kW (215 hp)

ISO 9249:2007/SAE J1349:2011 (DIN) 219 mhp

Operating Weight Ranges

VPAT 22 548 - 23 820 kg (49,708 - 52,512 lb)

Push Arm 22 403 - 24 184 kg (49,388 - 53,315 lb)

Cat® C9.3B engine meets U.S. EPA Tier 4 Final/EU Stage V/Korea Tier 4 Final emission standards with an aftertreatment system that is designed to be transparent to the operator.



The **Cat® D6 XE** is the world's first high drive Electric Drive dozer, offering you the highest level of productivity, fuel efficiency and ease of operation. With next-generation Electric Drive technology there are no gears to shift, so you experience constant power to the ground, greater agility and faster cycle times.

THE CAT® D6 XE

NEXT LEVEL VERSATILITY,
UNPRECEDENTED EFFICIENCY



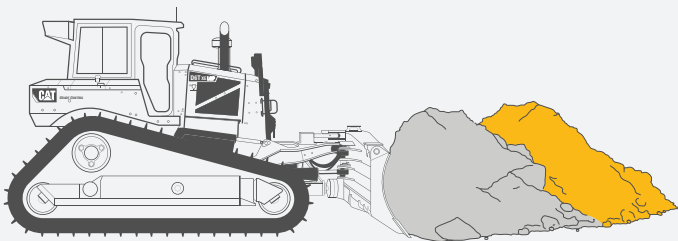
PUSHING YOUR PROFITABILITY FORWARD

Whether your work demands maximum productivity, or the lowest operating cost to move material, the fully redesigned Cat D6 XE dozer is the right machine for the job.

- + DESIGNED TO SAVE YOU FUEL, CUT YOUR SERVICE/MAINTENANCE COSTS AND HELP YOU REACH YOUR JOBSITE SAFETY GOALS
- + MAXIMIZE VERSATILITY WITH OPTIMIZED UNDERCARRIAGE AND BLADE CONFIGURATIONS THAT DELIVER BETTER BALANCE FOR GRADING, CAPACITY TO MOVE MORE MATERIAL AND LOW GROUND PRESSURE
- + AN UNPRECEDENTED CHOICE OF TECHNOLOGY FEATURES WORKS TOGETHER SEAMLESSLY TO HELP MAKE YOUR JOB EASIER



MOVE MORE MATERIAL WITH EVERY LITER/GALLON OF FUEL



THE D6 XE GIVES YOU UP TO 35% BETTER FUEL EFFICIENCY COMPARED TO THE D6T DOZER

NOTE: COMPARISON IS BASED ON 2014-2016 3-SPEED D6T DOZER

UP TO 12% LOWER MAINTENANCE COST

Designed specifically to reduce your service and maintenance costs with updated components, longer service intervals and fewer scheduled maintenance tasks.

UP TO 35% MORE FUEL EFFICIENT

Electric Drive gives you the highest level of productivity **and** significantly lower fuel consumption.

UP TO 50% MORE PRODUCTIVITY WITH CAT TECHNOLOGY

A broad range of Grade technology choices and new operator assist features help boost productivity so you get the most from your machine. Remote Flash and Remote Troubleshoot help improve jobsite efficiency by saving you time.



ELECTRIC DRIVE ELEVATED

NEXT GENERATION PERFORMANCE

Meet the world's first high drive Electric Drive dozer, delivering cost and productivity benefits to your business in a refined package that is more simple, efficient and robust.

TOP EFFICIENCY

Get the highest level of productivity and up to 35% better fuel efficiency – do more work done in less time, and with significantly lower fuel consumption.

GREATER AGILITY

Harness the constant power to the ground and added steering capability of this tractor for faster cycle times. Make lock-track pivot turns and counter rotate in gear for the agility needed in tight spaces.

EASY TO OPERATE

With Electric Drive, there are no gears to shift. Just set the ground speed and the dozer automatically optimizes for the application. Best-in-class operator sound levels give you added comfort and safety.

SIMPLE, EFFICIENT, ROBUST

More than a decade of experience brings you the next generation in Electric Drive systems.

Electric drive motor works at peak efficiency at a wide range of ground speeds. The whole system performs reliably in the most demanding dozer applications.

Simplified system uses Switched Reluctance technology with a simple rotor design. Today's Electric Drive is more robust, generates less heat and is more power dense.

Well over 50,000 hours of pre-production field testing, along with proprietary advances in lab testing at the component level, are behind this updated Electric Drive power train.

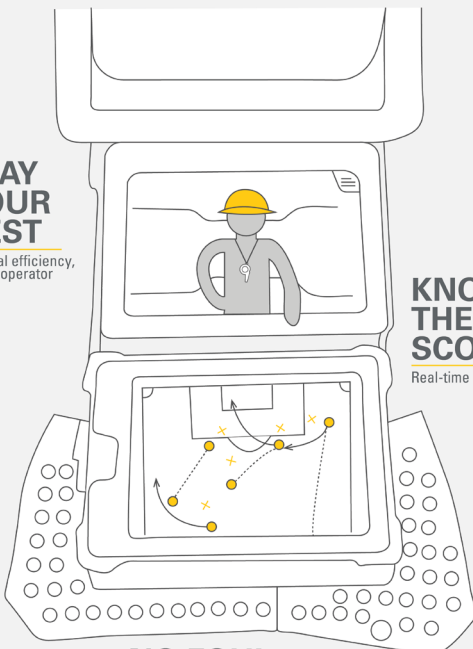


OUTPACE THE COMPETITION
WORK SMARTER. WORK SAFER.

CAT® TECHNOLOGY IS LIKE HAVING A
COACH IN THE CAB

PLAY YOUR BEST

Optimal efficiency,
 fewer operator
 inputs



KNOW THE SCORE

Real-time Feedback

NO FOUL

Save rework, time, materials

An unprecedented selection of technology choices help you make the most of your equipment investment.

- + Grade technologies help operators of varied skill levels hit target grade faster and more accurately.
- + New operator assist features work together behind the scenes to help make machine operation easier.
- + Cab offers optimal interior mounting locations that make it simple to install the grade control system of your choice.
- + All Cat Grade systems are compatible with radios and base stations from Trimble, Topcon and Leica.
- + Link technologies, remote services and tools like the Cat App help connect you to your equipment to help save time and money on service and maintenance.
- + Machine Security System gives you the option to unlock your dozer using a display Passcode or Bluetooth® key.
- + Cat Command for Dozing offers remote control operation for enhanced safety and greater productivity.

CAT GRADE TECHNOLOGY

BOOST YOUR PRODUCTIVITY

FIRST PASS TO FINISH GRADE

Factory integrated Cat Grade with 3D uses a GPS signal to automatically adjust blade movements – both lift and tilt – as you follow the design. Save time, labor and materials on all phases of the job. The friendly 10-inch (254 mm) touchscreen grade display works like a smart phone, so it is easy for operators to pick up quickly. Antennas are integrated into the cab roof for even better protection.



NO GPS SIGNAL? NO PROBLEM

Cat Grade with Slope Assist automatically maintains operator's pre-established blade position without a GPS signal. Put it to work building pads, creating simple design plans on-the-go or working where GPS is unavailable. Slope Assist works seamlessly alongside 3D GPS systems.

READY WHEN YOU ARE

With Attachment Ready Option (ARO), your dozer comes from the factory ready for simple installation of a grade control system. You will also find a mounting location and connections in the cab to make it easier to utilize your technology systems. ARO with Assist bundles the grade-ready option with features that work in the background to help operators get more done in less time.

Already invested in a grade infrastructure? You can install grade systems from Trimble, Topcon and Leica onto the machine.

READY TO HELP

OPERATOR ASSIST FEATURES



SMOOTH OPERATOR

Stable Blade has been improved to make it even easier to get smoother surfaces faster when operating manually. Works seamlessly with operator blade inputs to help reduce imperfections and produce a smoother surface.

MAKE THE MOST OF EVERY PASS

AutoCarry automates blade lift to help you get more consistent blade loads with each pass and reduce track slip. Works seamlessly with Grade with 3D but can now also be utilized when the dozer is not running in automatics.

OPTIMAL BLADE LOADS

Blade Load Monitor gives you real-time feedback on current load versus the optimal blade load based on your ground conditions. Actively monitors machine load and track slip to help you reach optimal pushing capacity.

KEEP PUSHING FORWARD

Save time, effort, fuel and track wear. If high track slip is detected, Traction Control temporarily reduces track power so the operator can adjust blade load and limit the track slip.

COME ON IN AND MAKE YOURSELF COMFORTABLE

Step into a spacious cab that resets the industry standard for operator comfort, visibility and ease of operation. Integrated Rollover Protective Structure (ROPS) leaves plenty of glass area for all-around visibility. Cleaner sight lines along the hood give you an excellent view to the blade.



STAY IN TOUCH

10-inch (254 mm) touchscreen main display is easy to use, with a great view of machine settings and features. The standard high-definition rearview camera shows prominently in the display and includes backup lines to guide you.

WORK SPACE

A wider air-suspension seat gives you plenty of adjustments. Enjoy more storage space, along with updated heating/cooling to help keep you more comfortable and reduce window fogging/frosting too. New powered precleaner option improves cabin pressurization to help keep more dirt out.

ON-BOARD HELP

Key Features button in the display gives you a machine overview, along with helpful operating tips. Learn more about technology and machine features that help you get the most from your dozer.

POWER TO MOVE DIRT

FINESSE FOR BETTER GRADING



BETTER BALANCE

Stronger, lighter VPAT structure is redesigned to give you better balance for grading. No need for a rear implement or counterweight.

BLADE VERSATILITY

Pick a beefed-up push arm bulldozer with plenty of dirt moving power or a purpose-built 6-way VPAT blade. Cat VPAT blades give you class-leading range of motion so you can handle challenging jobs like trenching and backfilling. The VPAT blade stays level when angled so you get a smoother grade.

LOWER GROUND PRESSURE

A new wide-gauge LGP VPAT is purpose-built and equipped with 915 mm (36 in) centered shoes. This adds up to 34 kPa (5 psi) ground pressure to help you take on soft footing.

GRADE FASTER

Grade faster – in the 2.5-3.0 speed range – without sacrificing quality. Wider LGP blade means fewer passes. New finish grading undercarriage option (10-roller) gives you smoother grades, at higher speeds, even in difficult surfaces like sand and gravel.

CUTTING EDGE PERFORMANCE

Optional Performance Cutting Edges for SU blades help you move material faster, especially in hard ground. Patented design moves more material per pass – increases blade payload by up to 35%*.

- + Easier blade penetration in hard/frozen ground, moderate rock
- + Digs deeper – aids blade control, load retention, traction – reduces track slip, improves undercarriage life
- + Equal wear life/life cycle cost* – no mid-life edge flip or end bit replacement required, reducing down time for maintenance
- + Built-in wear indicators, drilled and tapped holes for safer installation, interchangeable with traditional edges
- + Versatility – on-plane cutting system allows finish grading

*Compared to standard cutting edges

EFFICIENT AND SIMPLE

The D6 XE's Electric Drive Power Train has

90%
FEWER

moving parts than a traditional powershift transmission

FEWER MOVING PARTS MEANS A SIMPLER SYSTEM
AND REDUCED MAINTENANCE COSTS FOR YOU

SIMPLE SERVICE ACCESS

High drive allows Electric Drive power train to slide out the back of the dozer like traditional machines. Get to the power electronics through a panel in the cab. If you ever need to access the generator, the cab can be removed in about 30 minutes.

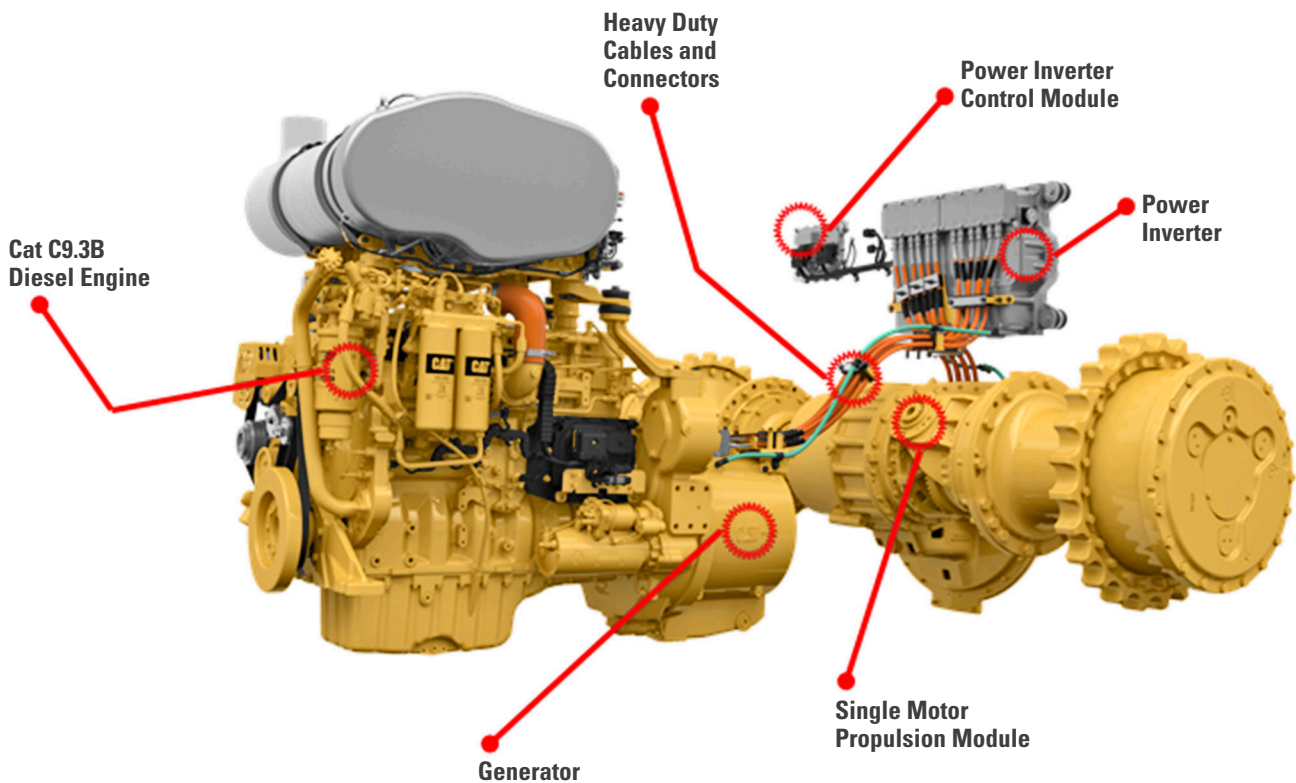
EASY DIAGNOSTICS

Next generation Electric Drive features simplified diagnostics via Electronic Technician. Power electronics are serviceable for lower cost. Plus, Electric Drive has fewer moving parts, fewer components to replace and a longer design life to rebuild than a standard powershift transmission.

DOZE WITH CONFIDENCE

D6 XE Assurance Plan* covers parts and labor on everything related to the Electric Drive Power Train – generator, motor, power inverter and cables – should there be a defect or failure of those components for 7-years/20,000 hours. Fully transferable.

**Coverage is after standard warranty and EPP are over. Customer must perform reseat and rebearing as preventive maintenance.*



LOWER MAINTENANCE COST

LESS MAINTENANCE TIME



SPEND LESS

Fewer filters and service points, along with longer service intervals, save you time and money on routine maintenance. Standard reversing fan extends time between core clean-outs and helps reduce debris for less system wear and tear.

GAIN DURABILITY

Cat C9.3B engine boosts durability with a simplified emissions reduction system and a redesigned fuel system.

GET BACK TO WORK

Grouped service points, modular component design and easy access to routine maintenance points save you time every day. Quick access floor plate option gives you tool-less access for easier belly pan clean out. If needed, the cab can be removed in about 30 minutes, compared to 4 hours on previous models. Standard rear ladder puts fueling, filter changes and rear window cleaning in easy reach. Ground-level access to optional fast fuel fill and maintenance points. Grab rail on both sides of cab roof and tie offs add to your safety.

REDUCE UNDERCARRIAGE COSTS

Choose the ideal undercarriage to match your jobsite conditions to help save money and maximize service life.

- + Heavy Duty Extended Life undercarriage - HDXL DuraLink™ - offers up to 20% more seal life in high impact conditions.
- + New Cat Abrasion undercarriage for high abrasion, low impact jobsites. New design offers double the seal life and eliminates bushing turns, reducing your costs up to 50% per hour compared to traditional undercarriage.
- + Common structures for Heavy Duty and Cat Abrasion undercarriage enable changes from one to the other.

CAT LINK TECHNOLOGY

TAKES THE GUESSWORK OUT OF MANAGING YOUR EQUIPMENT

Cat Link telematics technology helps take the complexity out of managing your jobsites by gathering data generated by your equipment, materials and people and serving it up to you in customizable formats.

CAT PRODUCT LINK™/VISIONLINK®

Product Link collects data automatically from your assets – any type and any brand. Access information anytime, anywhere with VisionLink – and use it to make informed decisions that boost productivity, lower costs, simplify maintenance and more. Satellite and/or cellular subscriptions are available.



REMOTE SERVICES

The Cat App helps you manage your assets – at any time – right from your smartphone. See fleet location and hours, get critical required maintenance alerts and even request service from your local Cat dealer.

- + **Remote Flash** – get software updates remotely.
- + **Remote Troubleshoot** – remote diagnostic testing helps pinpoint potential issues, saving time and money.
- + **Operator ID** lets you track machine operation by individual operator using the main display and Product Link.



REMOTE CONTROL READY

When dozers work in hazardous mining and earthmoving applications, the Command for Dozing option helps improve safety and efficiency. Operators control the machine using a line-of-sight console or a remote operator station. Deep integration with machine systems enables smooth, precise control for maximum efficiency and productivity.

With the line-of-sight console, take advantage of the dozer's built-in operator assist features. The remote operator station also allows full use of technology features like Grade with 3D and Slope Assist for even greater productivity.



Please consult your Cat dealer for regional availability.

SPECIAL ARRANGEMENTS

PURPOSE-BUILT FOR TOUGH TASKS

EQUIPPED FOR THE JOB

Factory guarding, seals and cab features help protect your machine and operator in especially harsh conditions. Insulated Clean Emissions Module and thermal shields add protection. High debris cooling system, automatic reversing fan help with cleanout.



FORESTRY AND LAND CLEARING

Updated sweeps lead the list of features designed to help protect your dozer from damage and debris build-up. Specialized track shoes plus woodchip and coal blades are matched to the job. Precleaner and roof-mounted filter help protect against dust and debris.

WASTE HANDLER

Take on landfill and transfer station work with confidence. Robust guarding, striker bars and seals help protect against impact, airborne debris and wrapping. Components are designed for easy cleanout, and air handling systems deliver cleaner air to the machine and to the operator. Specialized blades, track shoes and screens add to your productivity.



TECHNICAL SPECIFICATIONS

See cat.com for complete specifications.

TECHNICAL SPECIFICATIONS	
Power Train	Electric Drive
Engine	Cat C9.3B
Emissions	U.S. EPA Tier 4 Final, EU Stage V, Korea Tier 4 Final
Build Number	20B
Net Power (1,700 rpm)	
ISO 9249:2007/SAE J1349:2011	161 kW 215 hp
ISO 9249:2007/SAE J1349:2011 (DIN)	219 mhp
Fuel Tank	341 L 90 gal
DEF Tank	28 L 7.4 gal

BLADE	CAPACITY	WIDTH
SU	5.7 m ³ 7.5 yd ³	3312 mm 10.9 ft
LGP SU	5.8 m ³ 7.6 yd ³	3613 mm 11.9 ft
LGP S	3.8 m ³ 5.0 yd ³	4063 mm 13.3 ft
VPAT	4.1 m ³ 5.4 yd ³	3680 mm 12.1 ft
LGP VPAT (30-in)	4.5 m ³ 5.9 yd ³	4000 mm 13.1 ft
LGP VPAT (36-in)	4.9 m ³ 6.5 yd ³	4340 mm 14.2 ft

- Net power available at the flywheel when the engine is equipped with fan, air cleaner, aftertreatment, and alternator with engine speed at 1,700 rpm.
- Advertised power is tested per the specified standard in effect at the time of manufacture.
- All non-road Tier 4 Interim and Final, Stage IIIB, IV and V, and Korea Tier 4 Final diesel engines are required to use only Ultra Low Sulfur Diesel (ULSD) fuels containing 15 ppm EPA/10 ppm EU (mg/kg) sulfur or less. Biodiesel blends up to B20 (20% blend by volume) are acceptable when blended with 15 ppm (mg/kg) sulfur or less ULSD. B20 should meet ASTM D7467 specification (biodiesel blend stock should meet Cat biodiesel spec, ASTM D6751 or EN 14214). Cat DEO-ULS™ or oils that meet the Cat ECF-3, API CJ-4, and ACEA E9 specification are required. Consult your OMM for further machine specific fuel recommendations.
- Diesel Exhaust Fluid (DEF) used in Cat Selective Catalytic Reduction (SCR) systems must meet the requirements outlined in the International Organization for Standardization (ISO) standard 22241-1:2006.
- The air conditioning system on this machine contains the fluorinated greenhouse gas refrigerant R134a (Global Warming Potential = 1430). The system contains 1.36 kg of refrigerant which has a CO₂ equivalent of 1.946 metric tonnes.

CONFIGURATION	D6 XE	D6 XE LGP (30 IN)	D6 XE LGP (36 IN)
Operating Weight¹	22 403 kg (49,388 lb)	23 143 kg (51,020 lb)	24 184 kg (53,315 lb)
Ground Pressure	55 kPa (8.0 psi)	45 kPa (6.6 psi)	37 kPa (5.3 psi)
Machine Height	3.17 m (124.9 in)	3.17 m (124.9 in)	3.22 m (126.9 in)
Length of Machine without Blade	4.73 m (186.2 in)	4.73 m (186.2 in)	5.04 m (198.4 in)
Ground Clearance	361 mm (14.2 in)	361 mm (14.2 in)	395 mm (15.6 in)
Track Gauge	1.93 m (76 in)	2.08 mm (82 in)	2.29 m (90 in)
Width over Trunnions	2.69 mm (106 in)	2.99 m (118 in)	3.49 m (137.4 in)
Width across End Bits	3.30 m (10.83 ft)	3.61 m (11.84 ft)	4.06 m (13.32 ft)
Width across End Bits, Angled	—	—	—
Width of Standard Track Shoe	610 mm (24 in)	760 mm (30 in)	915 mm (36 in)
Length of Track on Ground	2.96 m (116.7 in)	2.96 m (116.7 in)	3.25 m (127.8 in)
CONFIGURATION	D6 XE VPAT	D6 XE LGP (30 IN) VPAT	D6 XE LGP (36 IN) VPAT
Operating Weight¹	22 548 kg (49,708 lb)	23 285 kg (51,333 lb)	23 820 kg (52,512 lb)
Ground Pressure	49 kPa (7.2 psi)	41 kPa (5.9 psi)	35 kPa (5.1 psi)
Machine Height	3.22 m (126.9 in)	3.22 m (126.9 in)	3.22 m (126.9 in)
Length of Machine without Blade	5.13 m (202.1 in)	5.13 m (202.1 in)	5.13 m (202.1 in)
Ground Clearance	422 mm (16.6 in)	395 mm (15.6 in)	383 mm (15.1 in)
Track Gauge	2.08 mm (82 in)	2.29 m (90 in)	2.39 m (94 in)
Width over Trunnions	—	—	—
Width across End Bits	3.68 m (12.07 ft)	4.00 m (13.12 ft)	4.34 m (14.24 ft)
Width across End Bits, Angled	3.36 m (11.02 ft)	3.65 m (11.99 ft)	3.97 m (13.02 ft)
Width of Standard Track Shoe	610 mm (24 in)	760 mm (30 in)	915 mm (36 in)
Length of Track on Ground	3.25 m (127.8 in)	3.36 m (132.1 in)	3.36 m (132.1 in)

¹With Multi-Shank Ripper (three shanks) add 1696 kg (3,739 lb).

For complete specifications and offerings, please reference the Technical Specifications document at www.cat.com or consult your local Cat dealer.

STANDARD & OPTIONAL EQUIPMENT

Standard and optional equipment may vary. Consult your Cat dealer for details.

POWER TRAIN	STANDARD	OPTIONAL
Electric Drive	•	
Cat C9.3B diesel engine	•	
Double reduction planetary final drives	•	
Hydraulic reversing fan	•	
OPERATOR ENVIRONMENT	STANDARD	OPTIONAL
Fully redesigned cab, sound suppressed, with Integrated Roll Over Protective Structure (IROPS)	•	
Full-color 10-inch (254 mm) liquid crystal touchscreen display	•	
Integrated rearview camera	•	
Adjustable operator controls/armrests	•	
Added storage areas	•	
Cloth seat	•	
Deluxe leather heated/ventilated seat		•
Communication radio ready	•	
Lights – 6 LED	•	
Premium lights – 12 LED		•
Integrated warning lights		•
Powered precleaner		•
CAT TECHNOLOGY	STANDARD	OPTIONAL
Slope Indicate	•	
ARO with Assist - Slope Assist - Traction Control - Stable Blade - Blade Load Monitor - AutoCarry - Third-party Grade Control Ready		•
Cat Grade with 3D - Full-color 10-inch (254 mm) touchscreen grade display - Grade receivers and antennas - Grade Software Enabled Attachment (SEA) - ARO with Assist features		•
Compatibility with radios and base stations from Trimble, Topcon and Leica	•	
Capability to install 3D grade systems from Trimble, Topcon and Leica	•	
Product Link – Cellular	•	
Product Link – Dual Cellular/Satellite		•
Remote Flash/Troubleshoot	•	
Grade Connectivity		•
Operator ID	•	
Machine Security – Passcode	•	
Machine Security – Bluetooth		•
Remote Control Ready	•	
Cat Command for Dozing		•

BLADES	STANDARD	OPTIONAL
Semi-Universal		•
VPAT		•
Straight blade		•
Angle blade		•
Foldable VPAT – under 3 m (9.9 ft) transport width (not available in all regions)		•
Waste/Landfill		•
UNDERCARRIAGE	STANDARD	OPTIONAL
Heavy Duty (HDXL with DuraLink) or Cat Abrasion		•
10-Roller Fine Grading undercarriage		•
SERVICE AND MAINTENANCE	STANDARD	OPTIONAL
Fast fuel fill ready	•	
Fast fuel pump		•
Refilling fuel pump (<i>EU only</i>)		•
Rear access ladder	•	
Shovel holder	•	
Ground level service center	•	
30-minute cab removal	•	
High-speed oil change		•
Underhood work light	•	
HYDRAULICS	STANDARD	OPTIONAL
Independent steering and implement pumps	•	
Load sensing hydraulics	•	
ATTACHMENTS	STANDARD	OPTIONAL
Ripper-ready rear hydraulics	•	
Ripper and winch-ready rear hydraulics	•	
High lift ripper with straight or curved shanks		•
Winch		•
Drawbar		•
Counterweights		•
Side screens		•
Rear screen – hinged or fixed		•
Sweeps		•
Forestry and Waste Special Arrangements		•

Not all features are available in all regions. Please check with your local Cat dealer for specific offering availability in your area.

For additional information, refer to the Technical Specifications brochure available at www.cat.com or your Cat dealer.

For more complete information on Cat products, dealer services and industry solutions, visit us on the web at www.cat.com.

VisionLink is a trademark of Trimble Navigation Limited, registered in the United States and in other countries.

Materials and specifications are subject to change without notice. Featured machines in photos may include additional equipment. See your Cat dealer for available options.

©2021 Caterpillar. All Rights Reserved. CAT, CATERPILLAR, LET'S DO THE WORK, their respective logos, Product Link, DEO-ULS, DuraLink, "Caterpillar Corporate Yellow", the "Power Edge" and Cat "Modern Hex" trade dress as well as corporate and product identity used herein, are trademarks of Caterpillar and may not be used without permission.

www.cat.com www.caterpillar.com

AEXQ2481-03
Build Number: 20B
(Aus-NZ, Europe, N Am,
S. Korea, Turkey)

