

CRANE-M3 SE

EN - Quick start guide

1. Getting Started



Download "ZY Play" App

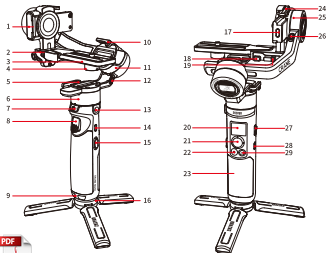


Read Full-version
User Guide



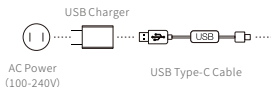
Watch Video
Tutorials

2. Get to Know CRANE-M3 SE



1. Fill Light
2. Level Mount Lock Screw
3. Quick Release Plate
4. 1/4" Camera Lock Screw
5. Pan Axis Latch
6. Pan Axis Motor
7. Pan Axis Lock Switch
8. Trigger Button
9. Wrist Strap Hole
10. Roll Axis Latch
11. Roll Axis Motor
12. Roll Axis Lock Switch
13. 1/4" Expansion Port
14. Type-C Charging/
Firmware Upgrade Port
15. Fill Light Switch
16. Tripod
17. Camera Control/
Charging Port
18. Quick Release Plate
Release Button
19. Quick Release Plate
Safety Lock
20. Display Screen
21. Joystick
22. Video Filming
Button
23. Handle
24. Tilt Axis Latch
25. Tilt Axis Motor
26. Tilt Axis Lock Switch
27. Power Button
28. Menu Button
29. M Button

3. Charging



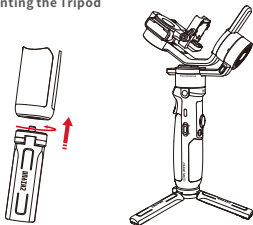
CRANE-M3 SE

CRANE-M3 SE supports PD Fast Charge Protocol.



4. Installation

Mounting the Tripod

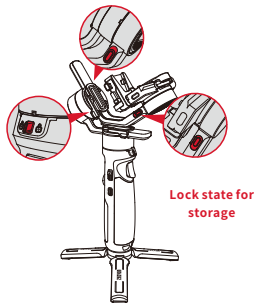


Lock state for installation



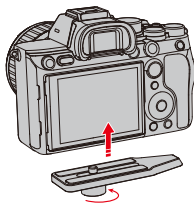
Mounting the Camera

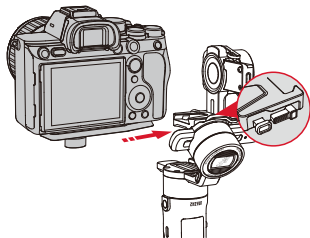
1. Expand CRANE-M3 SE.



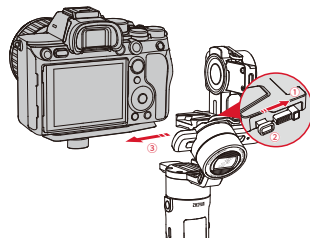
Lock state for storage

2. Mount the camera to the CRANE-M3 SE.

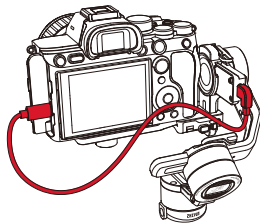




- ⚠ When detaching, toggle the quick release plate safety lock to unlock ①, press the quick release plate release button ② to push the whole quick release plate out ③.



3. Connect the camera control/charging port of the gimbal to the USB port of the camera.

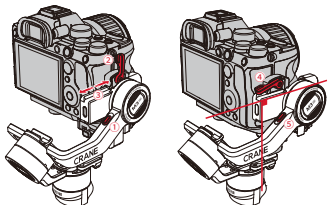


- ⚠ Please select the correct cable corresponding to the USB port type of the camera to connect. For details of supported camera models for CRANE-M3 SE, please visit the official website of ZHIYUN (www.zhiyun-tech.com) and check the "CRANE-M3 SE Camera Compatibility List".

5. Balancing

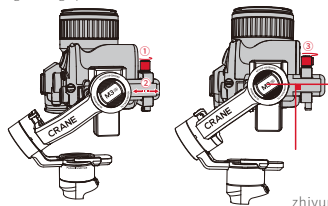
Horizontal Balance of the Tilt Axis

Unlock the tilt axis arm ① and loosen the tilt axis latch ②. Push the camera to move forward or backward ③ until the camera is steady and is at almost level with the ground ④. Tighten the latch ⑤.



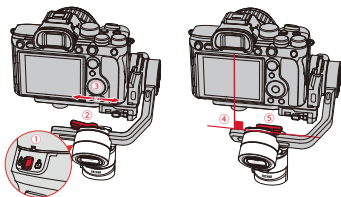
Vertical Balance of the Tilt Axis

Unlock the tilt axis arm, make the lens face up, loosen the level mount lock screw ①. Push the whole level mount to move forward or backward ②. Push until the camera can stay still with the lens facing up (i.e. the camera stays still and vertical to the ground) ③. Complete this step by tightening up the screw ④.



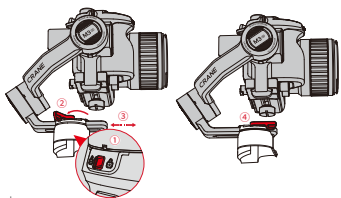
Roll Axis Balance

Unlock the roll axis ①, loosen the roll axis latch ②, push the roll axis arm to move left or right ③ until the camera can stay still and horizontal to the ground (as shown below) ④. Complete this step by tightening up the latch ⑤.



Pan Axis Balance

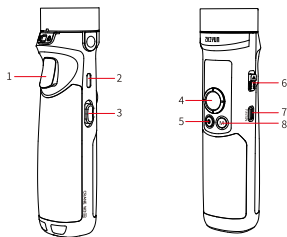
Unlock the pan axis ①, loosen the pan axis latch ②, hold and slightly tilt the handle, push the pan axis to move left or right ③ until the pan axis can stay still in any position. Complete this step by tightening up the pan axis latch ④.



- 💡 After balancing CRANE-M3 SE, the motor torque needs to be adjusted for proper function. It is recommended to use "Auto Calibration" in the touch screen menu "Motor" - "Auto".

6. How to Use CRANE-M3 SE

Buttons Description



- 1 Trigger Button**
 Double press: Reposition.
 Triple press:
 180° rotation for the pan axis motor.
 Press and hold: Enter Go Mode. Release to return to the previous mode.
- 2 Type-C Charging/
 Firmware Upgrade Port**
 Charge the gimbal/connect to computer for firmware upgrade via this port.

- 3 Fill Light Switch**
 Toggle the switch up/down and hold for 2 secs to turn on/off the fill light.
 Toggle the switch up once to increase the fill light brightness, toggle down once to decrease the fill light brightness
- 4 Joystick**
 Control the gimbal to rotate.
 In the menu interface, push the joystick up/down to scroll up/down the menu, push left to return to the previous menu, push right to the next menu.
- 5 Filming Button**
 Single press: Start/stop the filming.
- 6 Power Button**
 Push up and hold for 2s to power on/off the gimbal.
- 7 Menu Button**
 Single press: Enter/exit display screen main menu interface.
 Double press: Enable/disable gimbal joystick lock
- 8 M Button**
 Single press:
 Switch gimbal modes (PF-L-F)
 Double press:
 Switch gimbal modes (POV-V), single press to return to PF mode.
 Press and hold:
 Gimbal enter/exit standby mode.

Display Screen Interface



Main Page
(Default Page)



Standby Mode



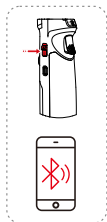
Axis Locked



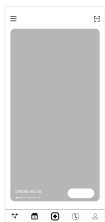
Menu

7. Connect to "ZY Play" App

1. Power on CRANE-M3 SE and turn on Bluetooth on the mobile phone.
2. Launch the "ZY Play" app. Select the CRANE-M3 SE page and tap to connect. Select the Bluetooth name of your CRANE-M3 SE to connect (the CRANE-M3 SE Bluetooth name can be found on the side of the tilt axis USER ID: XXXX).
3. If the CRANE-M3 SE is being used for the first time, you need to activate the gimbal via "ZY Play". Internet connection is required. After the activation succeeds, you can enter the camera interface of ZY Play App.



1



2



3



4

- ① "ZY Play" is an app dedicated to CRANE-M3 SE. When activated CRANE-M3 SE via ZY Play, you can also use it for firmware upgrade, virtual joystick control, six-side calibration, etc.
- ② ZY Play is subject to updates without notice. Please always refer to the latest version.

Disclaimer and Warning

Thank you for purchasing CRANE-M3 SE. The information contains herein affects your safety, legitimate rights and obligation. Please read this instruction carefully to ensure proper configuration before use. Failure to read and follow this instruction and warnings herein may result in serious injury to you or bystanders, or damage to your device or property. Guilin Zhishen Information Technology Co., Ltd (hereinafter referred to as "ZHIYUN") reserves all rights for final explanation on this instruction and other documents related to CRANE-M3 SE. The information is subject to update without notice. Please visit www.zhiyun-tech.com to obtain the latest product information.

By using this product, you hereby signify that you have read this document carefully and that you understand and agree to abide by the terms and conditions herein. You agree that you are solely responsible for your own conduct while using this product, and

for any consequences thereof. You agree to use this product only for purposes that are proper and in accordance with all terms, precautions, practices, policies and guidelines ZHIYUN has made and may make available.

ZHIYUN accepts no liability for damage, injury or any legal responsibility incurred directly or indirectly from the use of this product. Users shall observe safe and lawful practices including, but not limited to, those set forth herein.

ZHIYUN™, TransMount™ are the trademark of Guilin Zhishen Information Technology Co., Ltd and its affiliates. All product names or trademarks referred to herein are trademarks or registered trademarks of their respective holders.

Reading Tips

Legends:  Hints and Tips  Important

Warnings

Read the ENTIRE User Guide to become familiar with the features of this product before operating. Failure to operate the product correctly can result in damage to the product or personal property and cause serious injury. This is a sophisticated product. It must be operated with caution and common sense and requires some basic mechanical ability. Failure to operate this product in a safe and responsible manner could result in injury or damage to the product or other property. This product is not intended for use by children without direct adult supervision. DO NOT use with incompatible components or in any way otherwise as mentioned or instructed in the product documents provided by ZHIYUN. The safety guidelines herein contain instructions for safety, operation and maintenance. It is essential to read and follow all of the instructions and warnings in the User Guide, prior to assembly, setup or use, in order to operate the product correctly and avoid damage or serious injury.

Safe Operation Guidelines

CAUTION:

1. CRANE-M3 SE is a high-precision control device. Damage may be caused to CRANE-M3 SE if dropped or subject to external force, and this may result in malfunction.

2. Make sure the rotation of the gimbal axes is not blocked by external force when CRANE-M3 SE is turned on.
3. CRANE-M3 SE is not waterproof. Prevent contacts of any kind of liquid or cleaner with the CRANE-M3 SE. It is recommended to use dry cloth for cleaning.
4. Protect CRANE-M3 SE from dust and sand during use.

WARNING : To avoid fire, serious injury, and property damage, observe the following safety guidelines when using, charging, or storing your batteries.

1. Prevent the batteries from coming into contact with any kind of liquid. Do not leave batteries out in the rain or near a source of moisture. Do not drop the battery into water. If the inside of the battery comes into contact with water, chemical decomposition may occur, potentially resulting in the battery catching on fire, and may even lead to an explosion.
2. If the battery catches fire, use sand or dry powder fire extinguisher immediately to put out the fire..
3. Never use non-ZHIYUN batteries. If replacement or backup is needed, please purchase new batteries from ZHIYUN's official website or authorized channels. ZHIYUN takes no responsibility for any damage caused by non-ZHIYUN batteries.
4. Never use or charge swollen, leaky, or damaged batteries. Never use or charge if the battery smells, or overheats (exceeding the maximum temperature of 160 ° F/71 ° C). If your batteries are abnormal, contact ZHIYUN or a ZHIYUN a authorized dealer for further assistance.
5. The battery should be used within the temperature range from -10° C to 60° C. Use of battery in environments above 60° C may lead to a fire or explosion. Use of battery below -10° C may lead to serious battery damage.
6. Do not use the battery in strong electrostatic or electromagnetic environments. Otherwise, the battery protection board may malfunction.
7. Do not disassemble or use any sharp object to puncture the battery in any way. Otherwise, the battery may leak, catch fire or explode.
8. Do not mechanically strike, crush, or throw the battery. Do not place heavy objects on the battery or charger.