

Thank you for purchasing our ink-jet printer JV400-LX.
This "Print Guide" explains the printing method using JV400-LX and the attached software RIP [RasterLink] and items to be checked/set before printing.

First, confirm the following items:

Before printing, the preparation for JV400-LX and the software RIP [RasterLink] is required.
First, prepare the followings:

About system configuration (Refer to P. 2)

The explanation of the system configuration to print is described.

Prepare JV400-LX (Refer to P. 3)

To use JV400, the items below are explained:

- Connect the PC in which the software RIP [RasterLink] has been installed with JV400-LX.
- Turn on the power supply.
- Depending on the media to be set, adjust the print head height etc.
- Set the media.
- Perform test printing to check whether there is no nozzle clogging etc.
- Correct the feeding rate of media.
- Correct the ink drop position.

Prepare the RasterLink (Refer to P. 4)

The preparation of the software RIP [RasterLink] is explained.
For the installation method, refer to the manual of the RasterLink.

The printing method using a sample is explained.

Here, the printing method using a sample image included in the attached CD.

Perform printing (Refer to P. 5)

Download the profile suitable for the using condition. (Refer to P. 7)

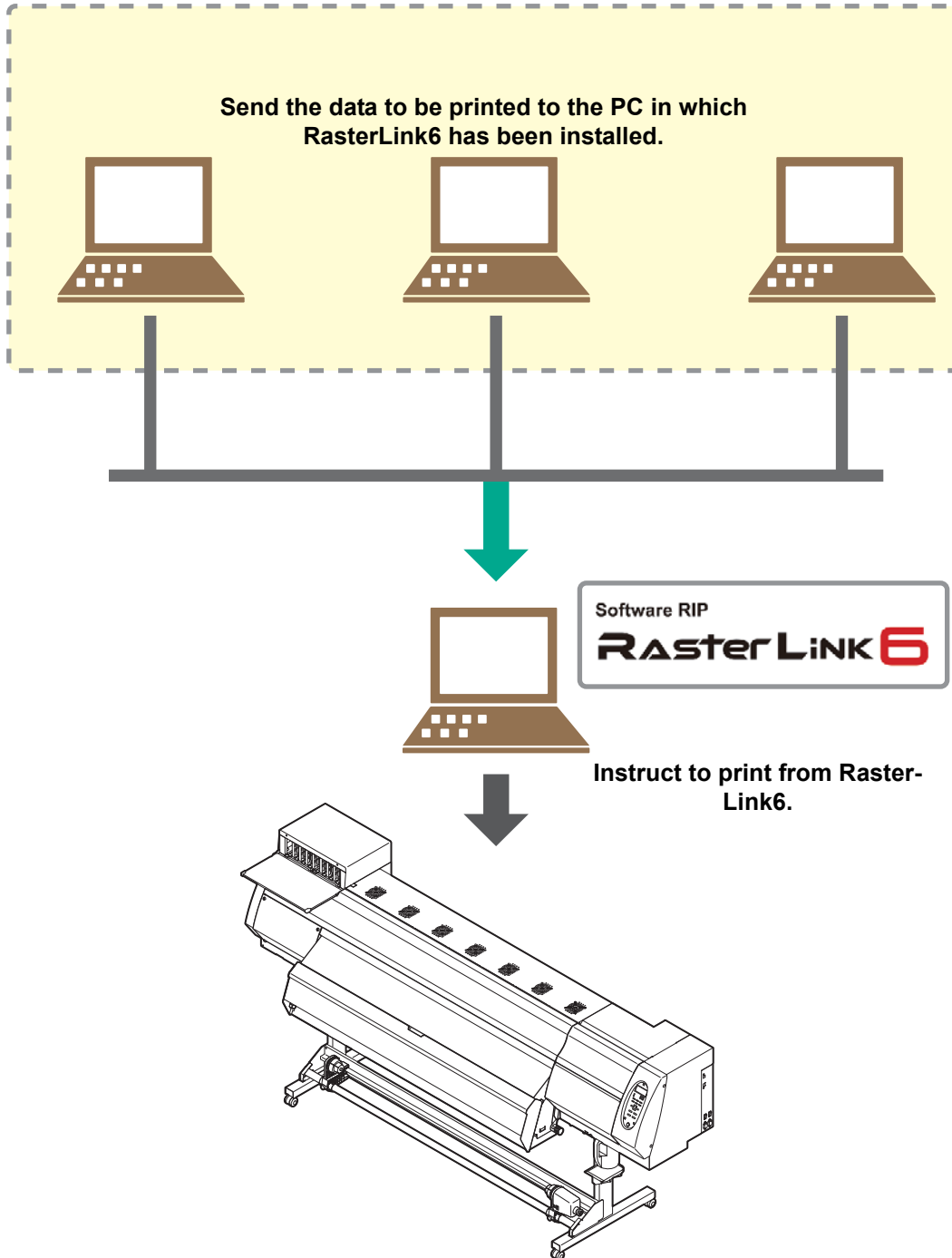
Some typical questions are described.

Typical questions (Refer to P. 9)

First, confirm the following items:

About system configuration

Instruct to print the printing data created with the application such as Illustrator or Photoshop etc. from the PC in which the attached RasterLink has been installed.

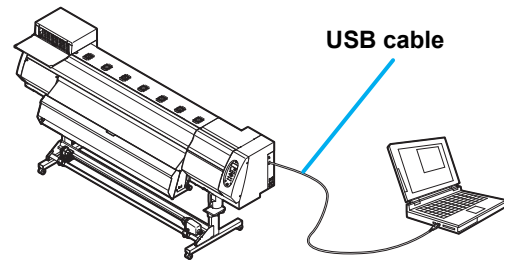


Prepare JV400-LX

Following the procedures below, prepare JV400-LX.

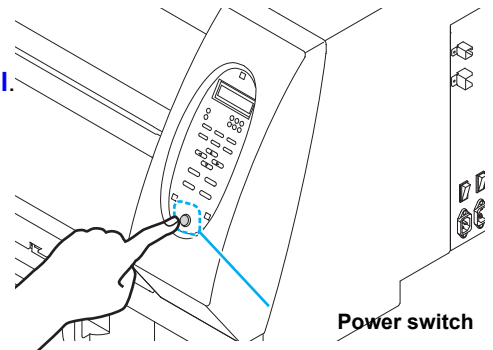
1. Connect a PC in which the attached RasterLink is installed with JV400.

- For details, refer to [P.1-10 of JV400 Operation Manual](#).



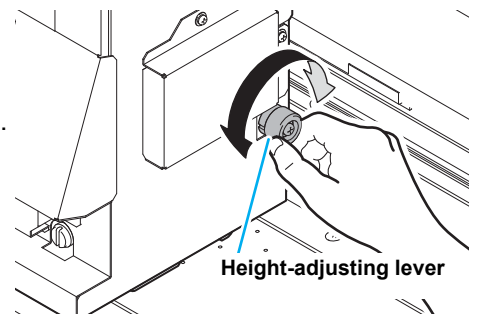
2. Turn on the power supply of JV400.

- For details, refer to [P.2-3 of JV400 Operation Manual](#).



3. Before setting a media, check the height of print head.

- For details, refer to [P.2-5 of JV400 Operation Manual](#).
- Adjust the Height-adjusting lever depending on the media to be used.



4. Set the media.

- When setting the roll media : [P.2-8 to 12 of JV400 Operation Manual](#)
- When setting the leaf media : [P.2-13 to 14 of JV400 Operation Manual](#)

5. Perform a test printing.

- Check if discharging defect such as nozzle clogging exists or not.
- For details, refer to [P.2-19 to 20 of JV400 Operation Manual](#).

6. Perform a feed correction.

- Correct the feeding rate of media.
- For details, refer to [P.2-22 to 23 of JV400 Operation Manual](#).

7. Perform a test dot position correction.

- Correct the ink drop position.
- For details, refer to [P.2-24 to 25 of JV400 Operation Manual](#).

Prepare the RasterLink

Check that the attached software RIP [RasterLink] is prepared.

1. Check if the attached RasterLink is installed.

- If it is installed, the icon on the right is displayed on the PC desktop.
- For the installation, refer to [Installation Guide of the attached RasterLink](#).



2. Check the connection with JV400.

- (1) Is the power supply of JV400 turned ON?
- (2) Is the PC in which the attached RasterLink is installed connected with JV400?

3. Register the printer in the attached RasterLink.

- For print in JV400, the registration of the printer into the attached RasterLink is required.
- If the printer has already been registered, this operation can be skipped.

- (1) Double click  to start the RasterLink.

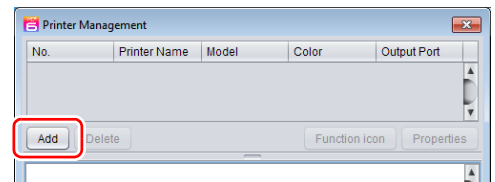
- The main window of the RasterLink is displayed.
- If no printer is registered, the [Printer Management...] window appears. In this case, proceed to step (3).

- (1) From the menu, select [Environments], and then [Printer Management...].

- The [Printer Management...] window appears.

- (2) Click [Add].

- The [Printer setting] window appears.



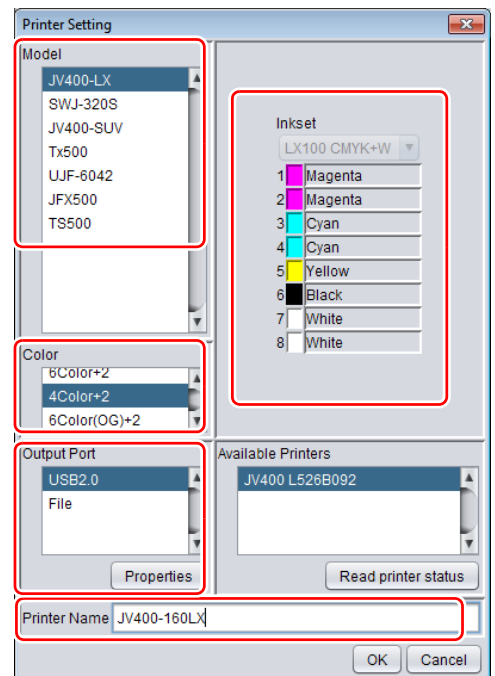
- (3) Set the printer information.

(The setup procedure described below assumes that JV400-160LX is connected. Set the printer information in the following order:)

- Output Port : USB2.0
- Available Printers : Select JV400 L526B092.
- Model : JV400-LX
- Color : Select depending on the device.
- Printer Name : Enter "JV400-160LX".
(For an ink set, the information retrieved from the printer is displayed.)

- (4) Click [OK].

- The confirmation screen is displayed. Clicking [OK] starts the registration of the printer.
- The [Do you create the hot folder and printer driver?] confirmation window appears. If you want to create them, click [Yes]. (You can also create them at a later time.)



Perform printing

Here, the printing method using a sample image included in the CD of the JV400-LX Operation Manual.



- Check **P. 2 to P. 4** “**First, confirm the following items:**” without fail before creating a seal/a sticker.

1. Double-click to start the attached RasterLink.

- The main window of the attached RasterLink is displayed.

2. Set the CD of JV400-LX Operation Manual into the disk drive.

3. Click [Print Guide / Sample data].

- The “Print Guide and Sample Data” dialog is displayed.

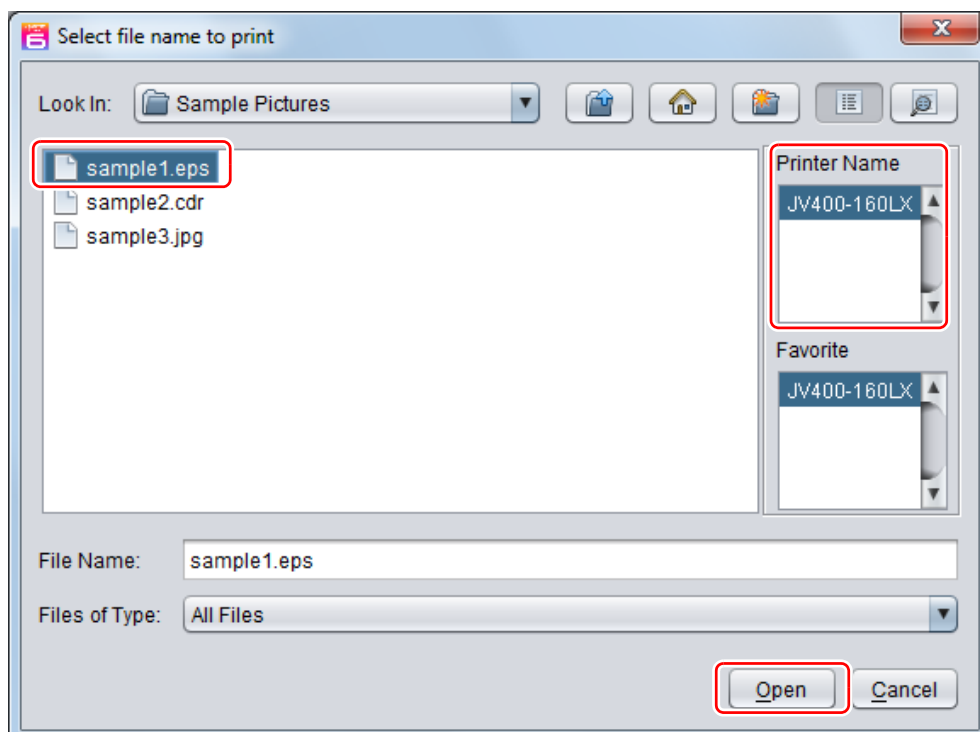


4. To select the data you want to print from the RasterLink, select [File], and then [Open] from the menu.

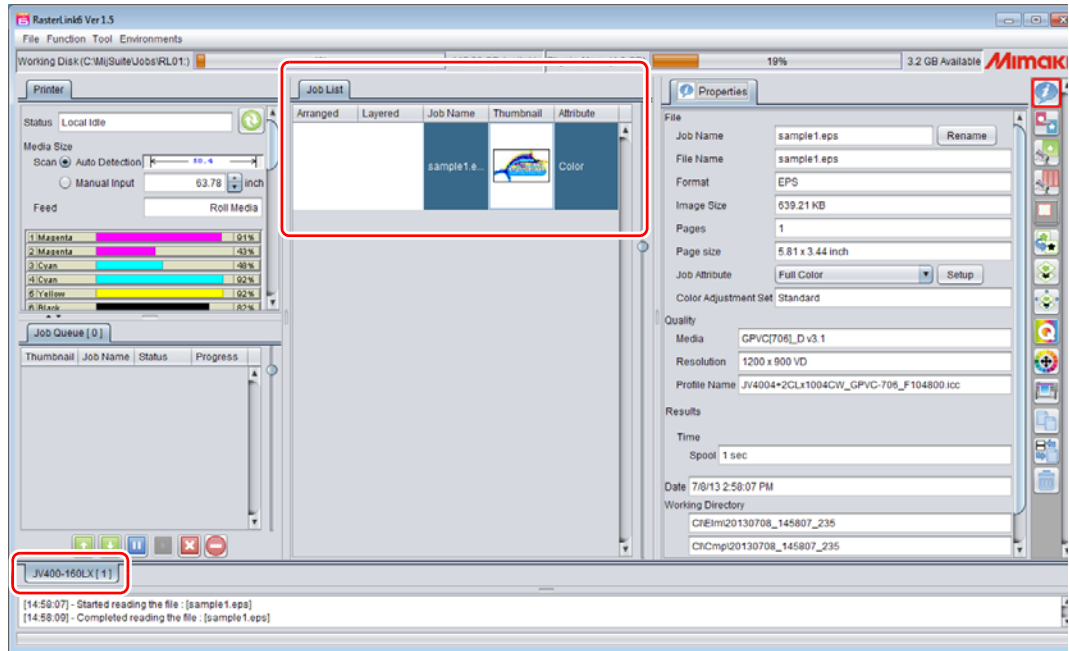
- The “Select file name to print” window appears.

5. Select the file to be printed, and click [Open].

- If more than one printer is registered, select [JV400-LX] from [Printer Name].
- For details on the Favorites setting, see the Raster Link Reference Guide.
- The file is loaded. The loaded file is displayed on the [JV400-LX] tab in the main window.





6. Select the file loaded into the [JV400-160LX] tab.



7. To check or edit the settings, from [Function icons] displayed in the right side of the window, select the icons shown below.

- For details about each function icon, see the attached RasterLink Reference Guide.

(1) To specify the enlargement, reduction, or copy setting, select  (General Print).

(2) To select a profile that matches the medium or ink set installed in JV400-SUV, select  (Quality).

8. To print a file, select (Execution) from the [Function icons] displayed in the right side of the window.

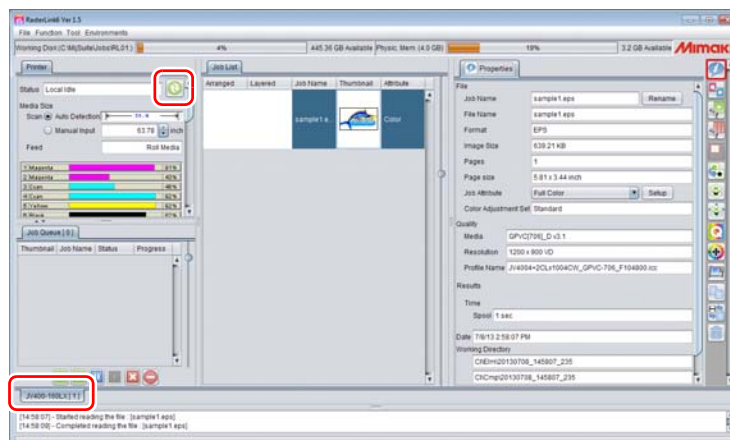
- (1) Select [RIP & Print] or [Immediate Print].
- (2) Click [Start].



- If you have replaced a medium in JV400-SUV, perform the following steps to acquire the width of the medium from the printer.

1. In the media window, select the [JV400-160LX] tab.

2. In the [Printer] section, click .



Download the profile suitable for the using condition.

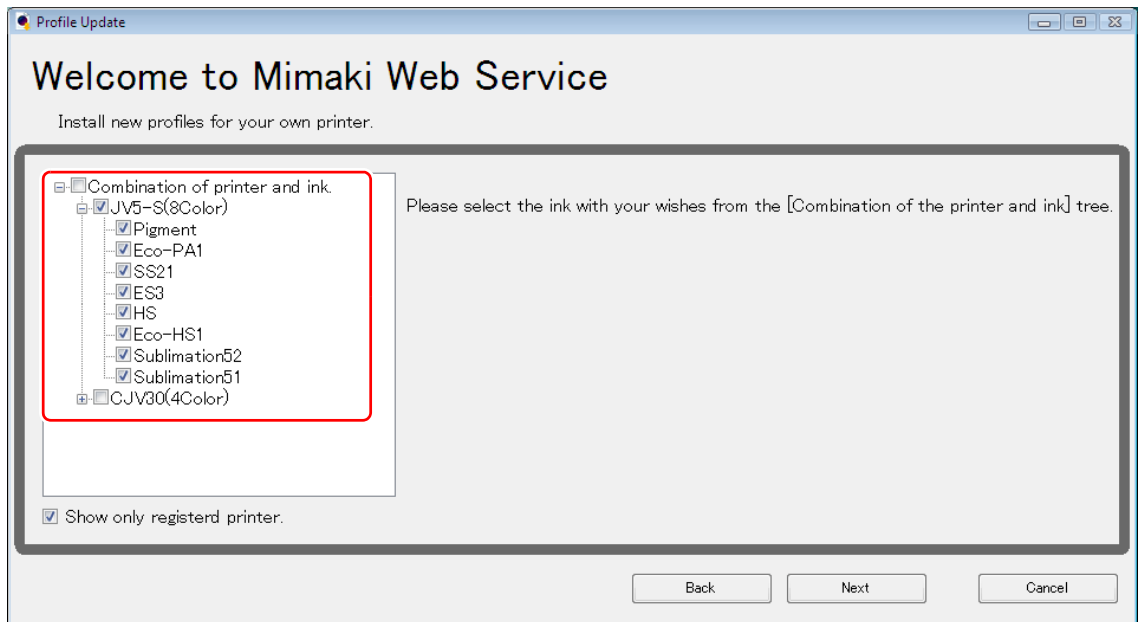
Here, the download method of the profile suitable for the ink set to use is explained.
Read this by replacing the printer/ the profile with the one you use.

1. Start the Profile Update.

- (1) Select [RasterLinkPro5] - [Update] - [Profile Update] from the Start menu.
- (2) Click [Next].

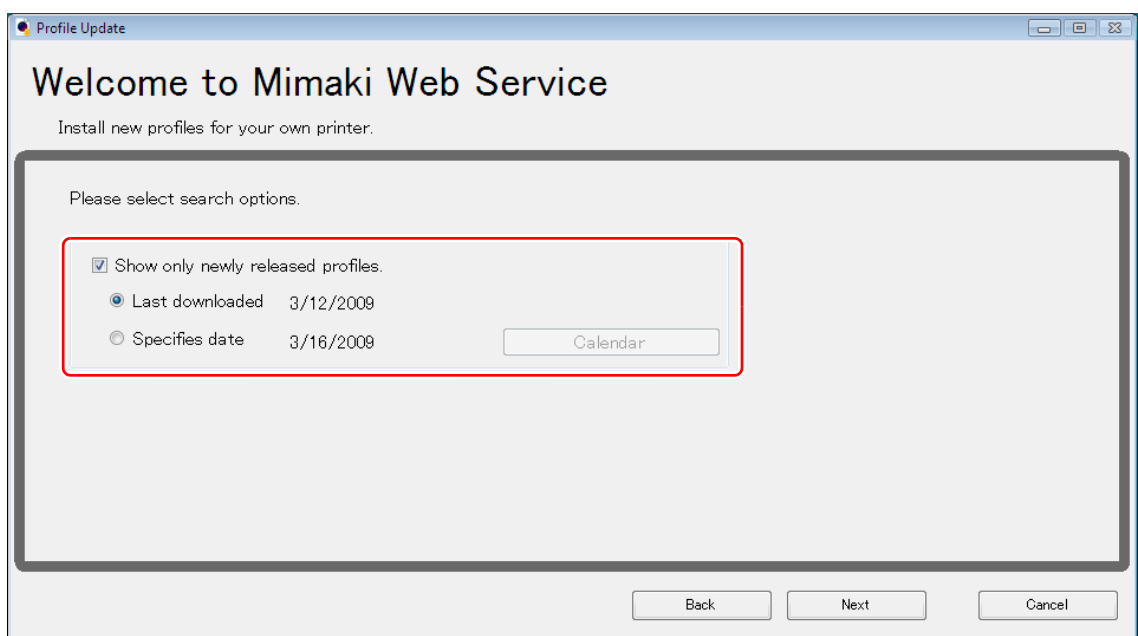
2. Specify the printer and ink to install a profile.

- (1) After selecting, click [Next].



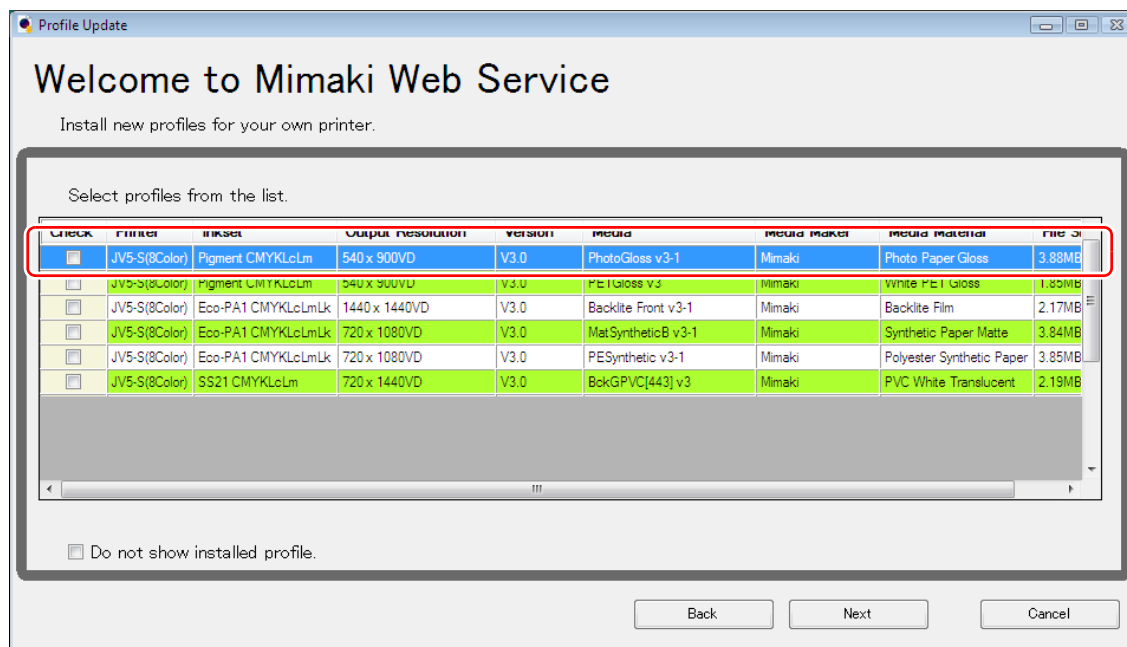
3. Specify the option.

- (1) After selecting, click [Next].
- (2) Connect the Internet and check the profile.



4. Download the profile.

- (1) If there are profiles that meet the settings, the list appears.
- (2) Select the profile to install, and click [Next]
- (3) Click [Finish] to end the download procedure.



- The profile is installed when RasterLinkPro5 is started next. Refer to [Installation Guide of the attached RasterLink](#) for details.
- You can also download the profile from our website. (<http://www.mimaki.co.jp/>)

Typical questions

The answers to the questions/ the troubles frequently asked by the customer are provided.

About errors

● “Replace a WIPER” is displayed

Check the wiper and if there are any scratches at the apical end of the wiper film, replace the wiper by following the [Chapter 4 “Replacing the wiper” of the OPERATION MANUAL](#).

● “WASTE TANK” is displayed

The waste ink tank is nearly full. Replace the waste ink tank by following the procedures in [Chapter4 “If a Waste Ink Tank Confirmation Message Appears” of the OPERATION MANUAL](#). (Even if you replace the waste ink tank, the display does not disappear.)

Supplied items

Purchase them in a distributor in your district or our office.

Name of part	Specifications	Part codes	Remarks
Wiper Kit 400	Including 10	SPA-0184	
Waste Ink Tank 2L	One	SPA-0117	
Cutter blade Assy	One	SPA-0107	
C absorber kit	3 set	SP-0185	
Flushing liquid 01 cartridge	220ml	FL001-Z-22	Dedicated for rear surface set of main body
Maintenance washing Liquid LX kit	200ml	ML001-Z-K1	
W filter kit		SPA-0187	
Kim wipe		SPA-0207	

