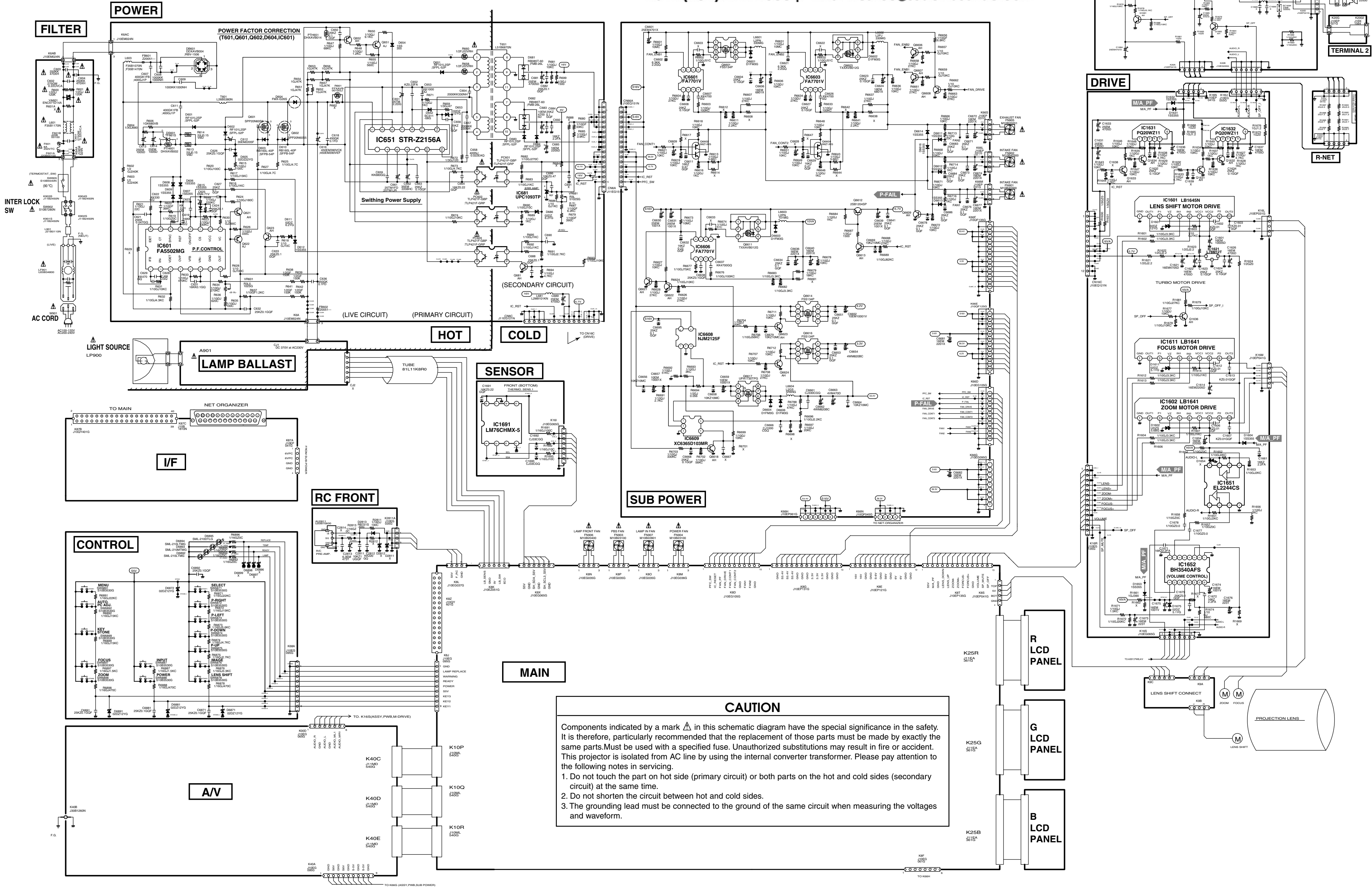


Schematic Diagrams

CAUTION
 Fuse of the specified parts number must be used.
 Unauthorized substitutions may result in fire or accident.



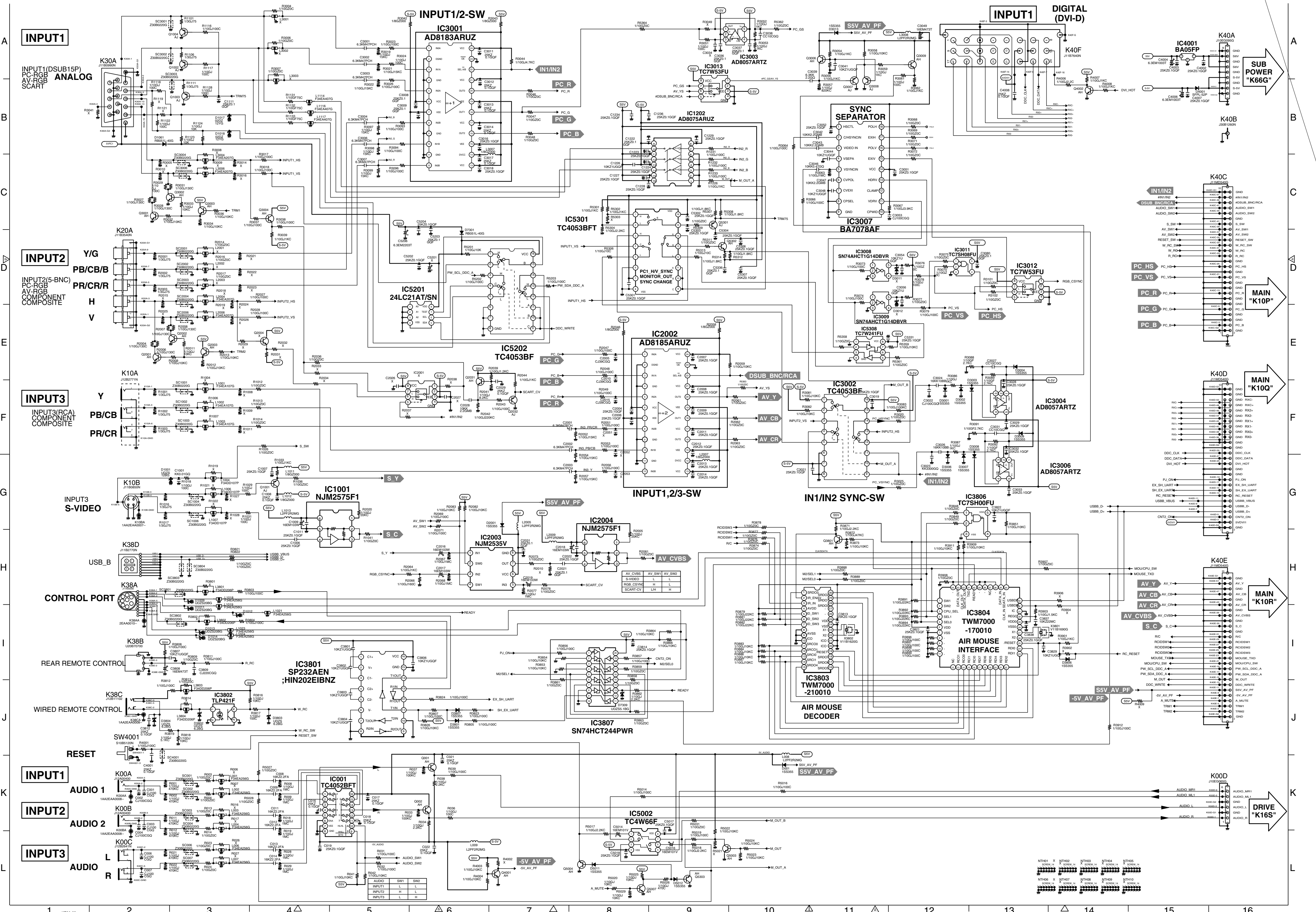
CAUTION

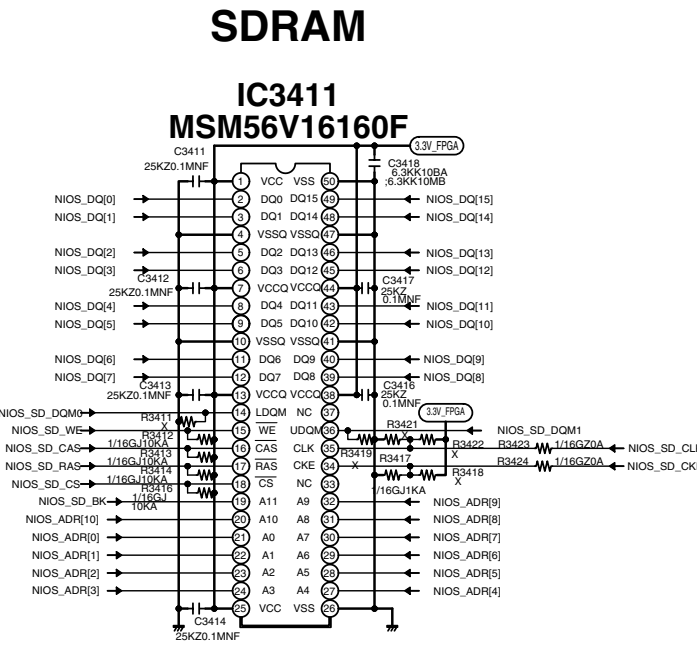
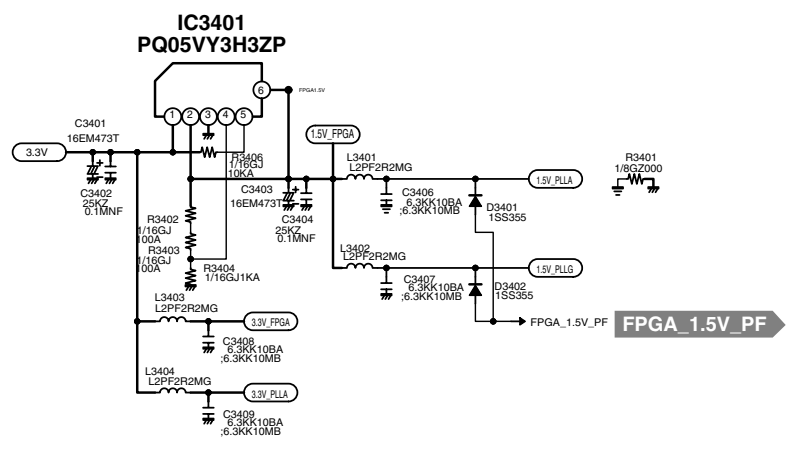
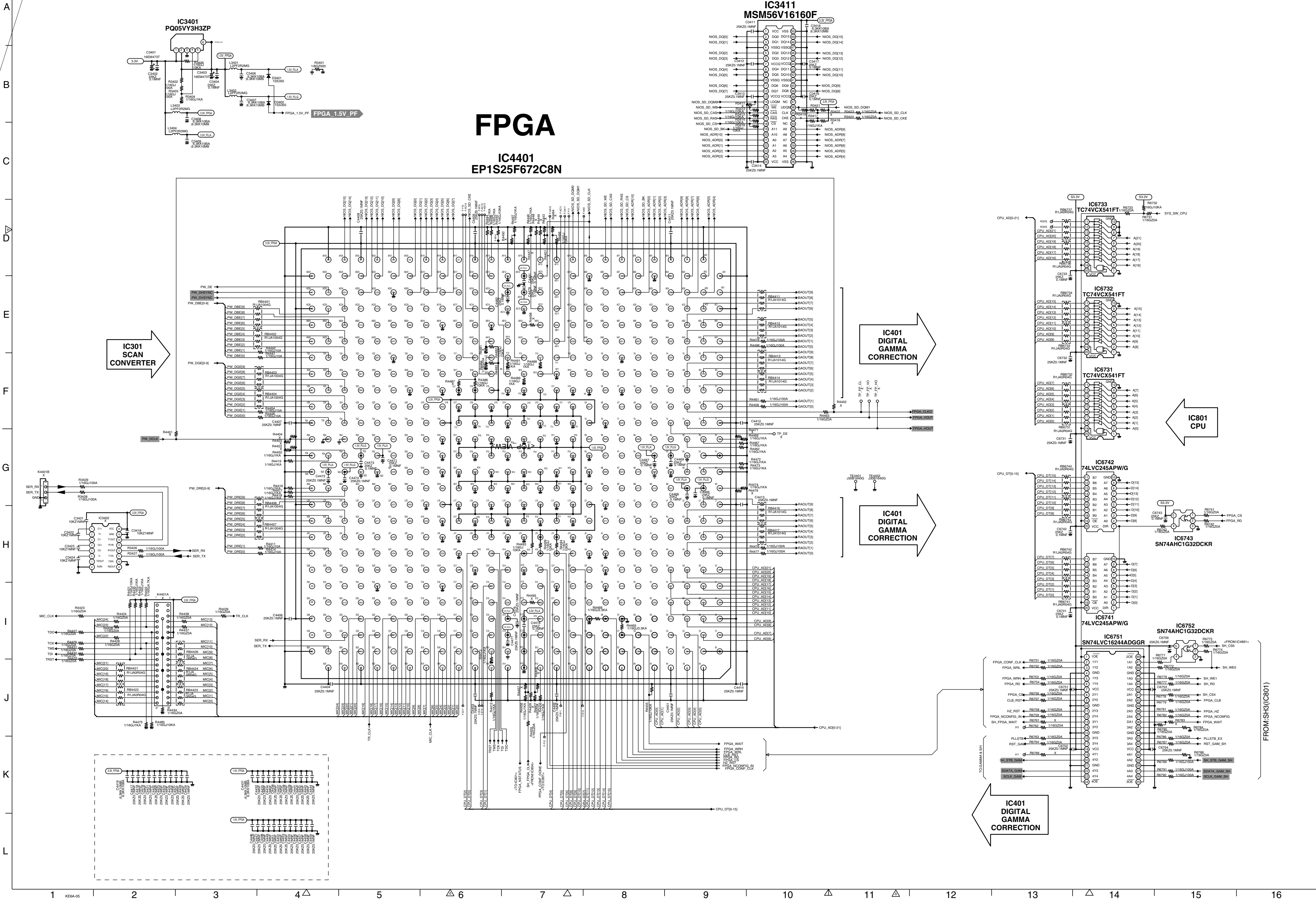
Components indicated by a mark Δ in this schematic diagram have the special significance in the safety. It is therefore, particularly recommended that the replacement of those parts must be made by exactly the same parts. Must be used with a specified fuse. Unauthorized substitutions may result in fire or accident. This projector is isolated from AC line by using the internal converter transformer. Please pay attention to the following notes in servicing.

1. Do not touch the part on hot side (primary circuit) or both parts on the hot and cold sides (secondary circuit) at the same time.
2. Do not shorten the circuit between hot and cold sides.
3. The grounding lead must be connected to the ground of the same circuit when measuring the voltages and waveform.

A
B
C
D
E
F
G
H
I
J
K
L

A
B
C
D
E
F
G
H
I
J
K
L





FPGA

IC4401
EP1S25F672C8N

IC301
SCAN
CONVERTER

IC401
DIGITAL
GAMMA
CORRECTION

IC801
CPU

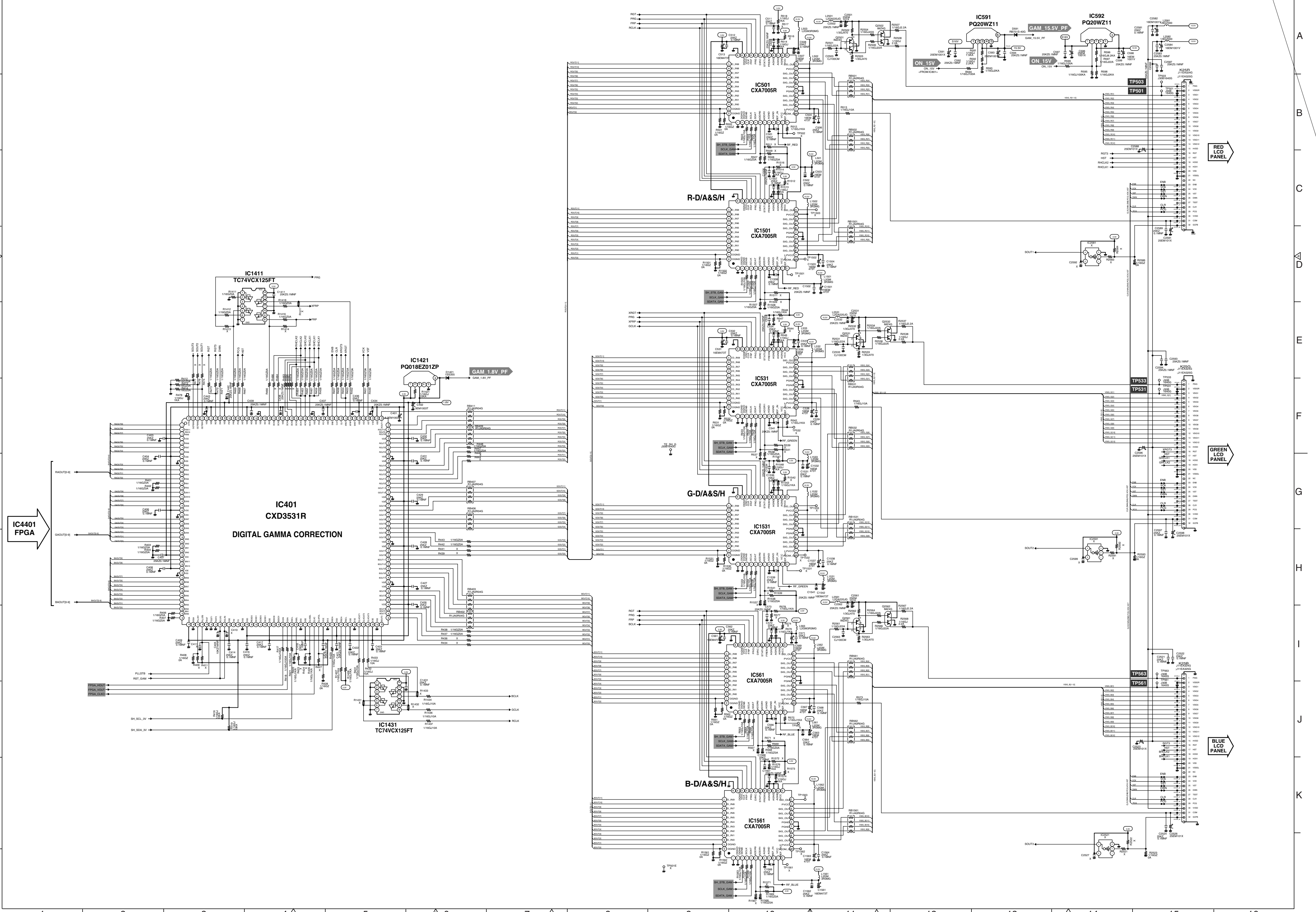
IC401
DIGITAL
GAMMA
CORRECTION

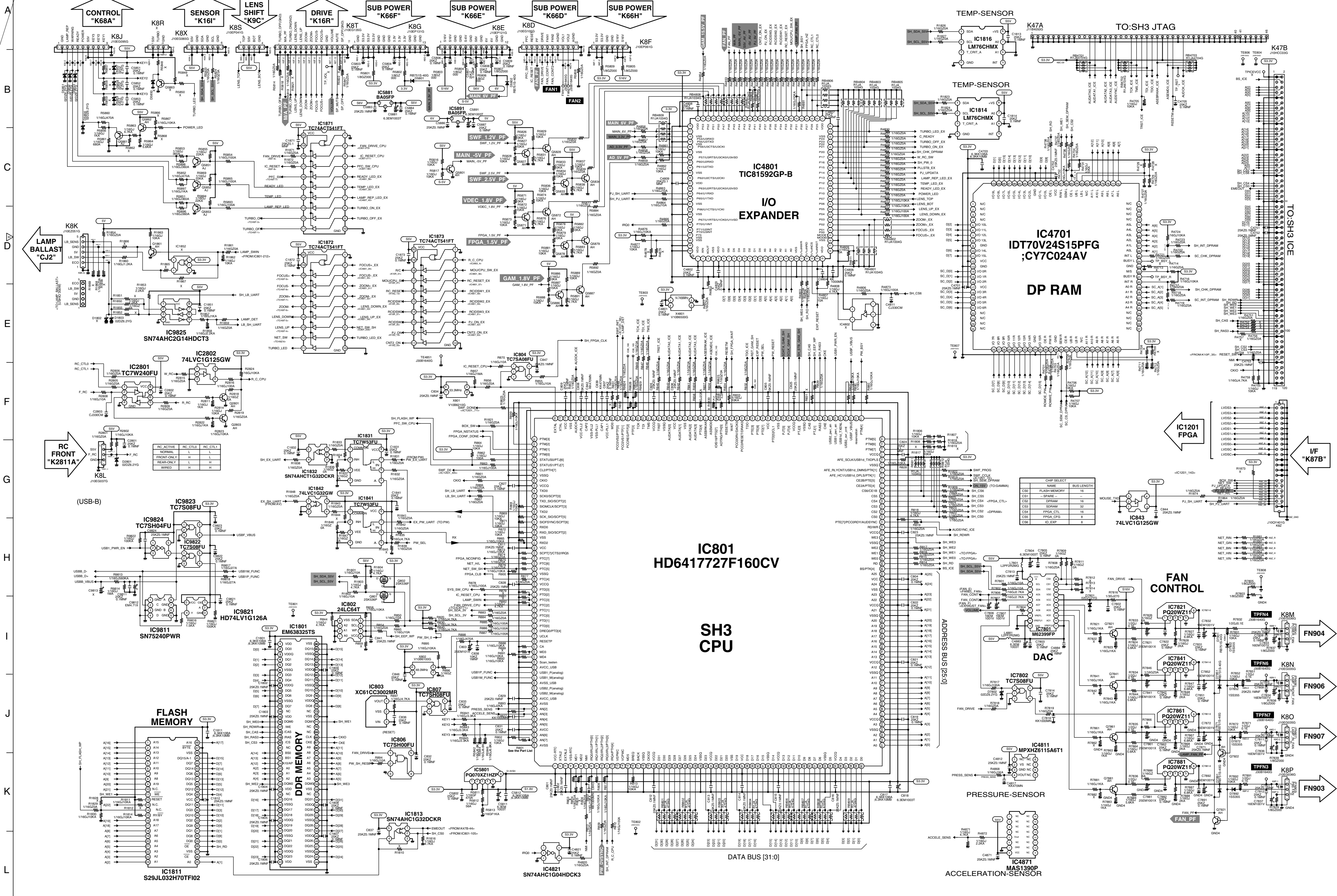
IC401
DIGITAL
GAMMA
CORRECTION

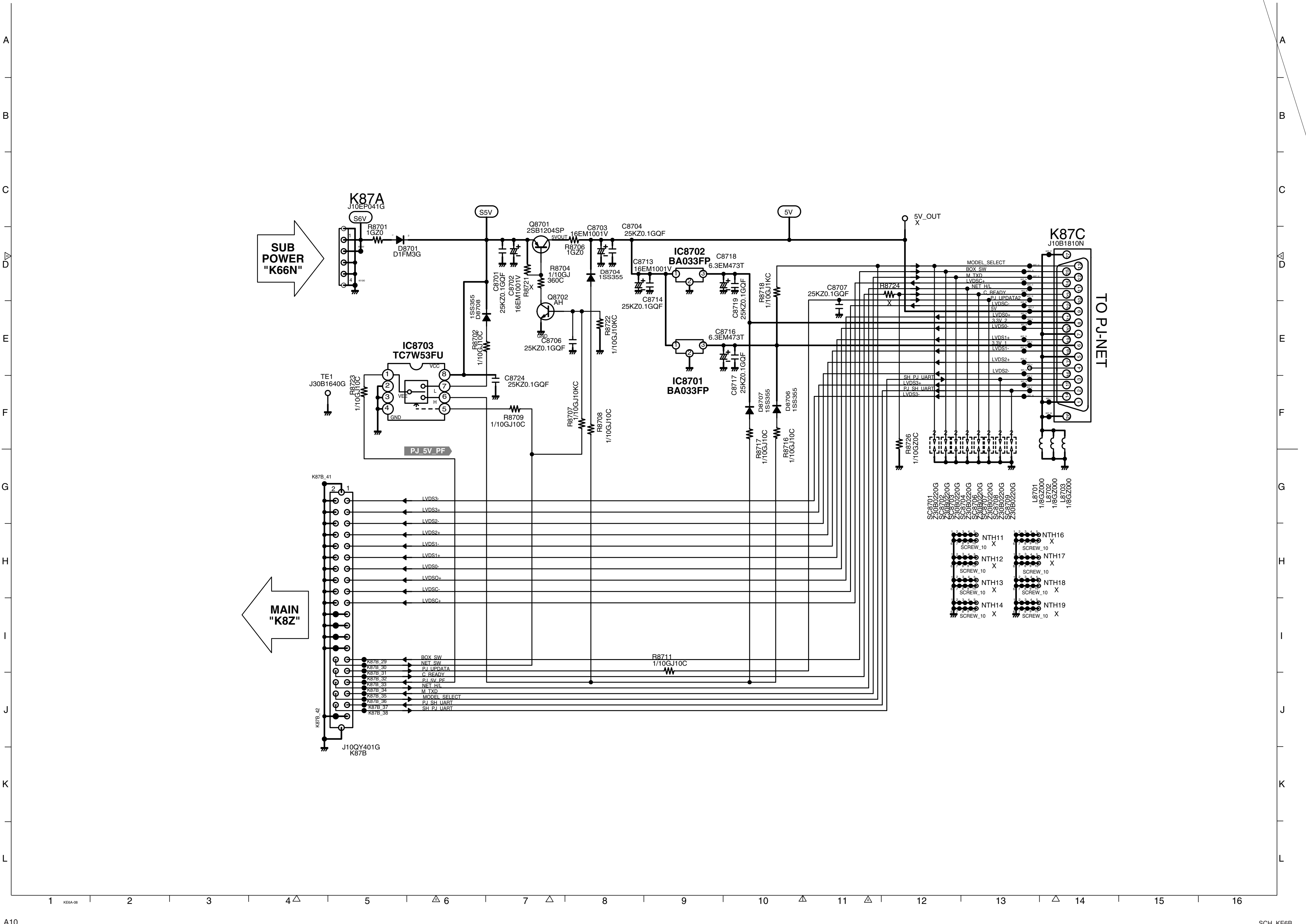
A
B
C
D
E
F
G
H
I
J
K
L

A
B
C
D
E
F
G
H
I
J
K
L

1 2 3 4 5 6 7 8 9 10 11 12 13 14 15 16







SUB
POWER
"K66N"

MAIN
"K8Z"

TO-PJ-NET

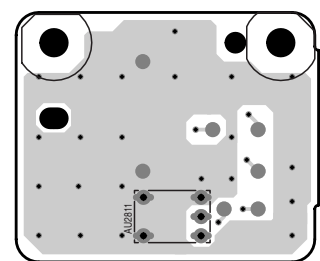
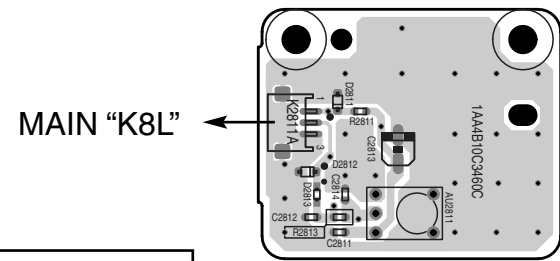
- SC8701 230B0220G
- SC8702 230B0220G
- SC8703 230B0220G
- SC8704 230B0220G
- SC8705 230B0220G
- SC8706 230B0220G
- SC8707 230B0220G
- SC8708 230B0220G
- SC8709 230B0220G
- SC8710 230B0220G
- SC8711 230B0220G
- L8701 1/8GZ000
- L8702 1/8GZ000
- L8703 1/8GZ000

- NTH11 SCREW_10 X
- NTH12 SCREW_10 X
- NTH13 SCREW_10 X
- NTH14 SCREW_10 X
- NTH16 SCREW_10 X
- NTH17 SCREW_10 X
- NTH18 SCREW_10 X
- NTH19 SCREW_10 X

Printed Wiring Board Diagrams

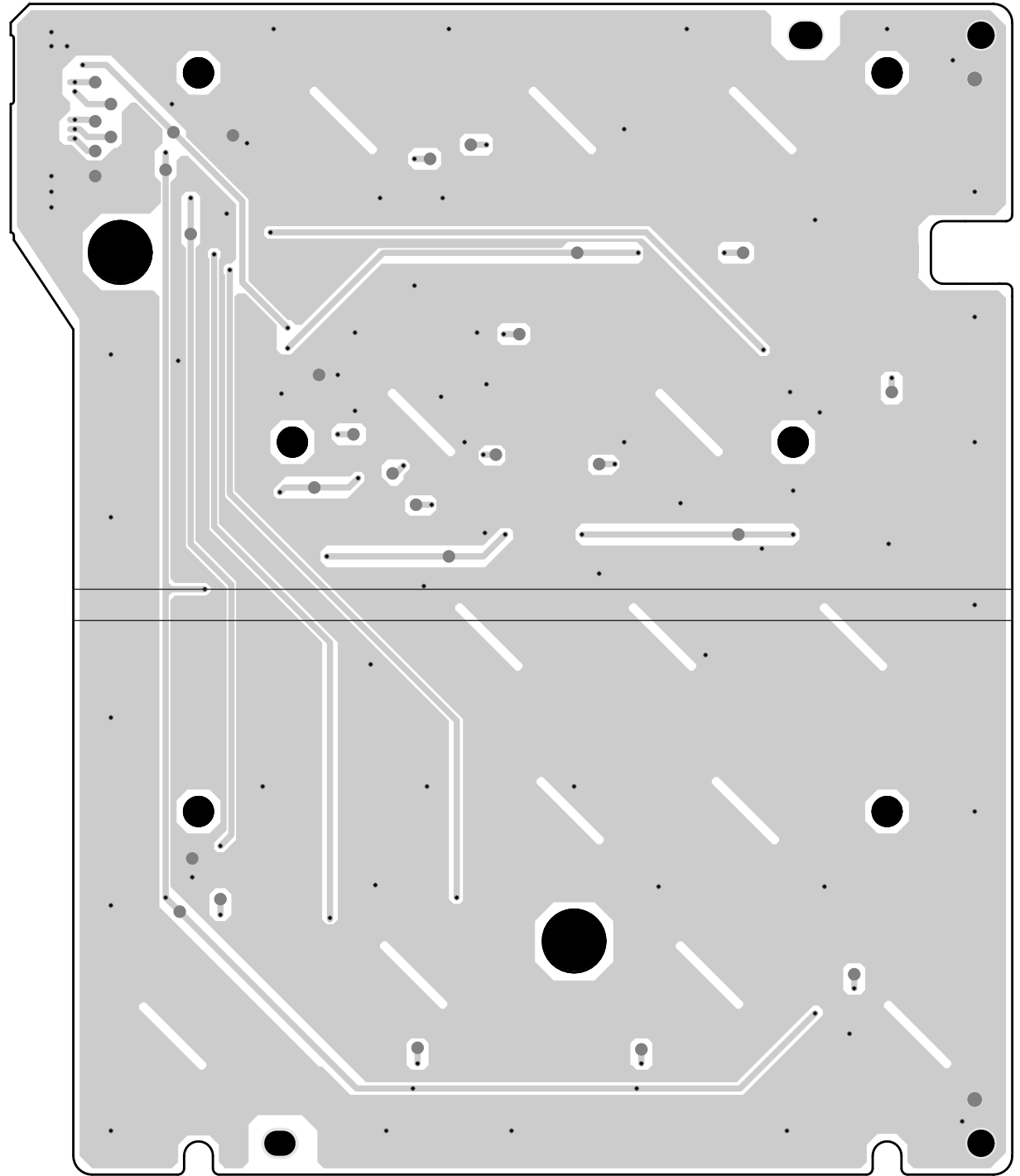
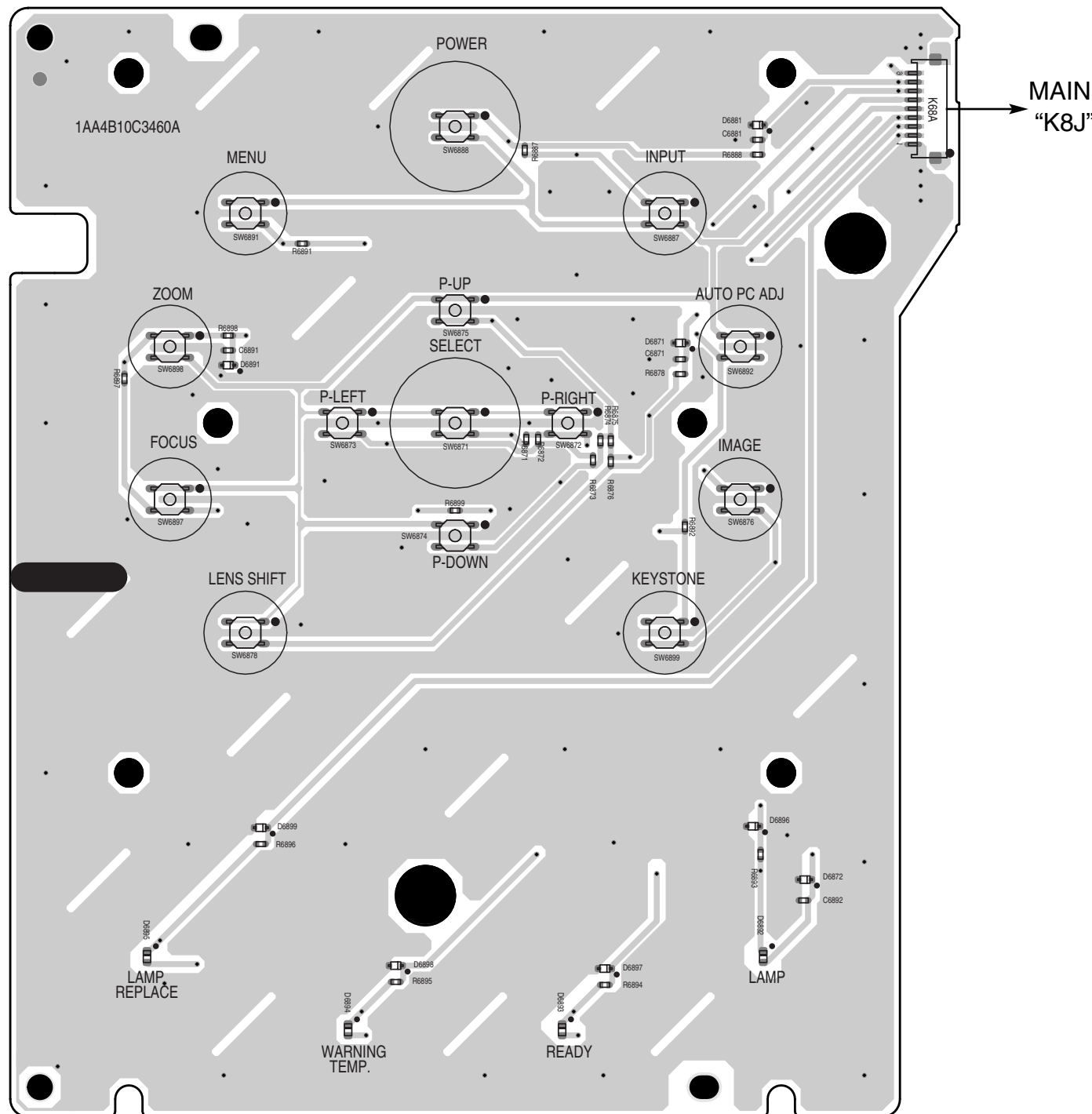
RC FRONT (SIDE:A)

RC FRONT (SIDE:B)



CONTROL (SIDE:A)

CONTROL (SIDE:B)



CAUTION

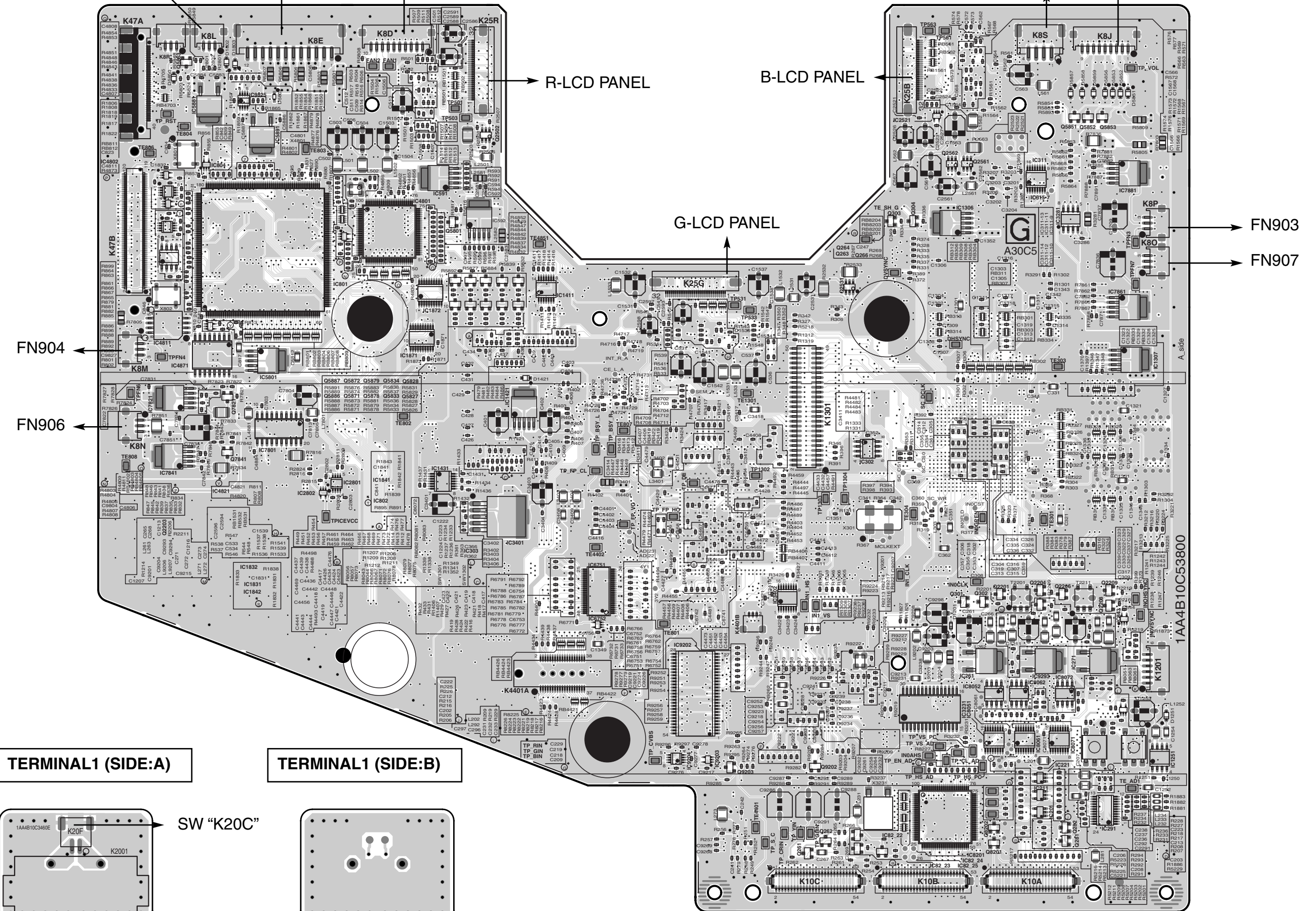
- This projector is isolated from AC line by using the internal converter transformer. Please pay attention to the following notes in servicing
1. Do not touch the part on hot side (primary circuit) or both parts on hot and cold sides (secondary circuit) at the same time.
 2. Do not shorten the circuit between hot and cold sides.
 3. The grounding lead must be connected to the ground of the same circuit when measuring of voltages and waveforms.

MAIN (SIDE:A)

RC FRONT "K2811A" SUB POWER "K66E" SUB POWER "K66D"

LENS SHIFT CONNECT "K9C"

CONTROL "K68A"



MAIN (SIDE:B)

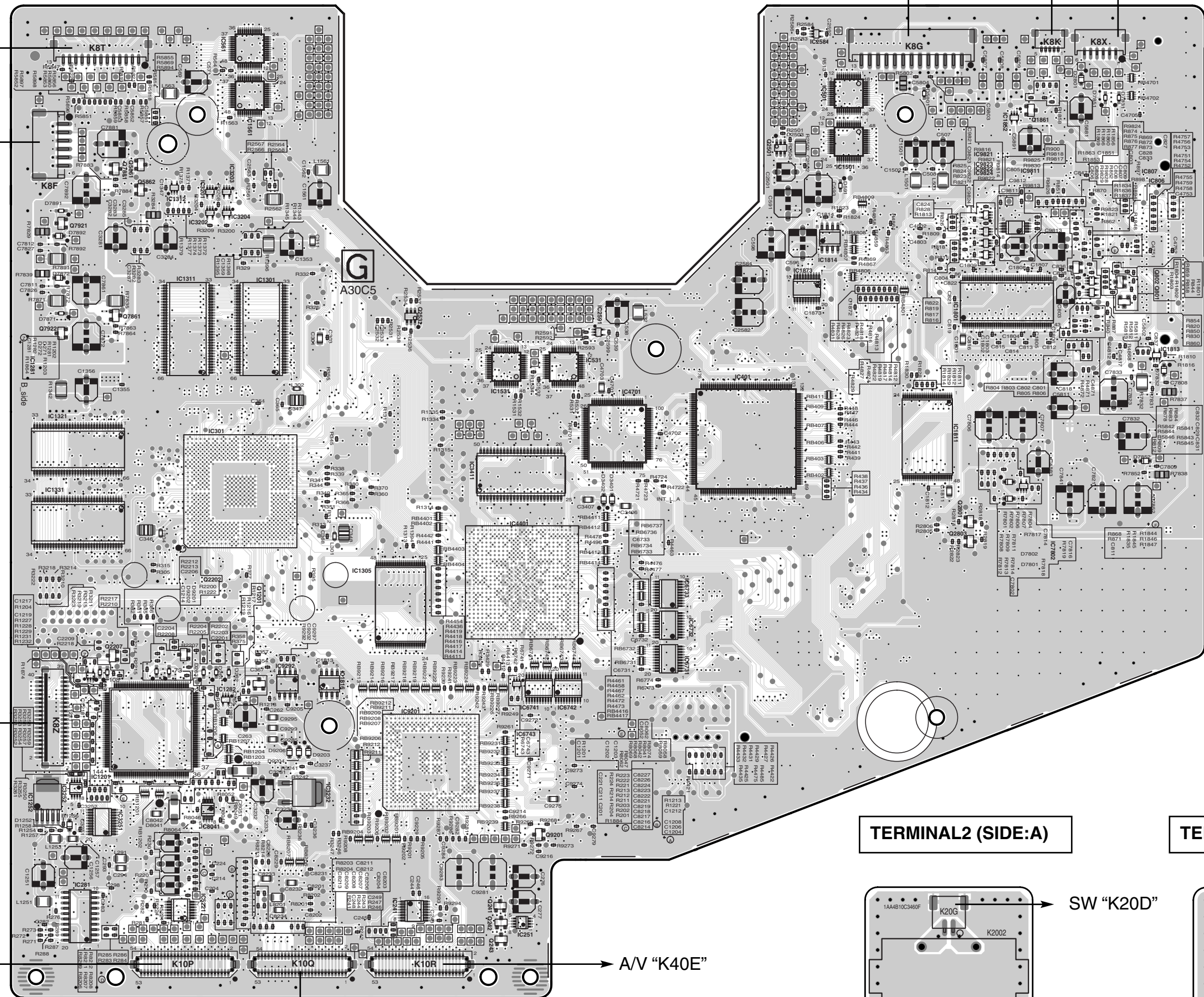
SUB POWER
"K66F"

LAMP BALLAST
"CJ2"

SENSOR "K16I"

DRIVE "K16R"

SUB POWER
"K66H"



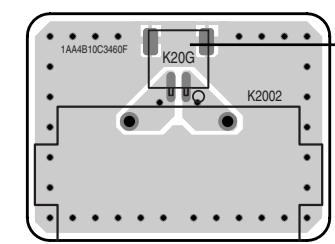
G

A30C5

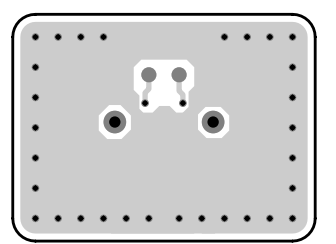
I/F "K87B"

TERMINAL2 (SIDE:A)

TERMINAL2 (SIDE:B)



SW "K20D"

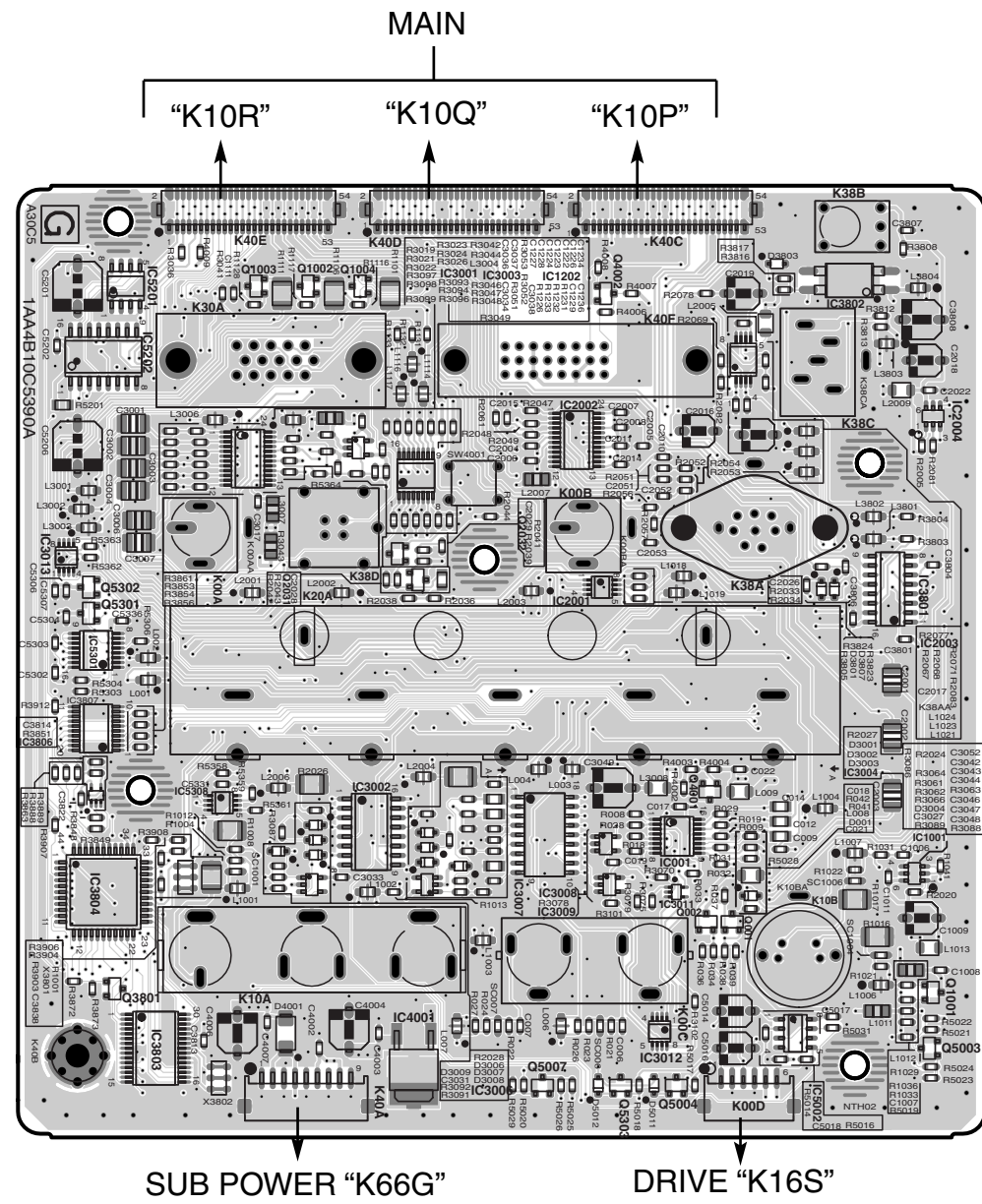


A/V "K40C"

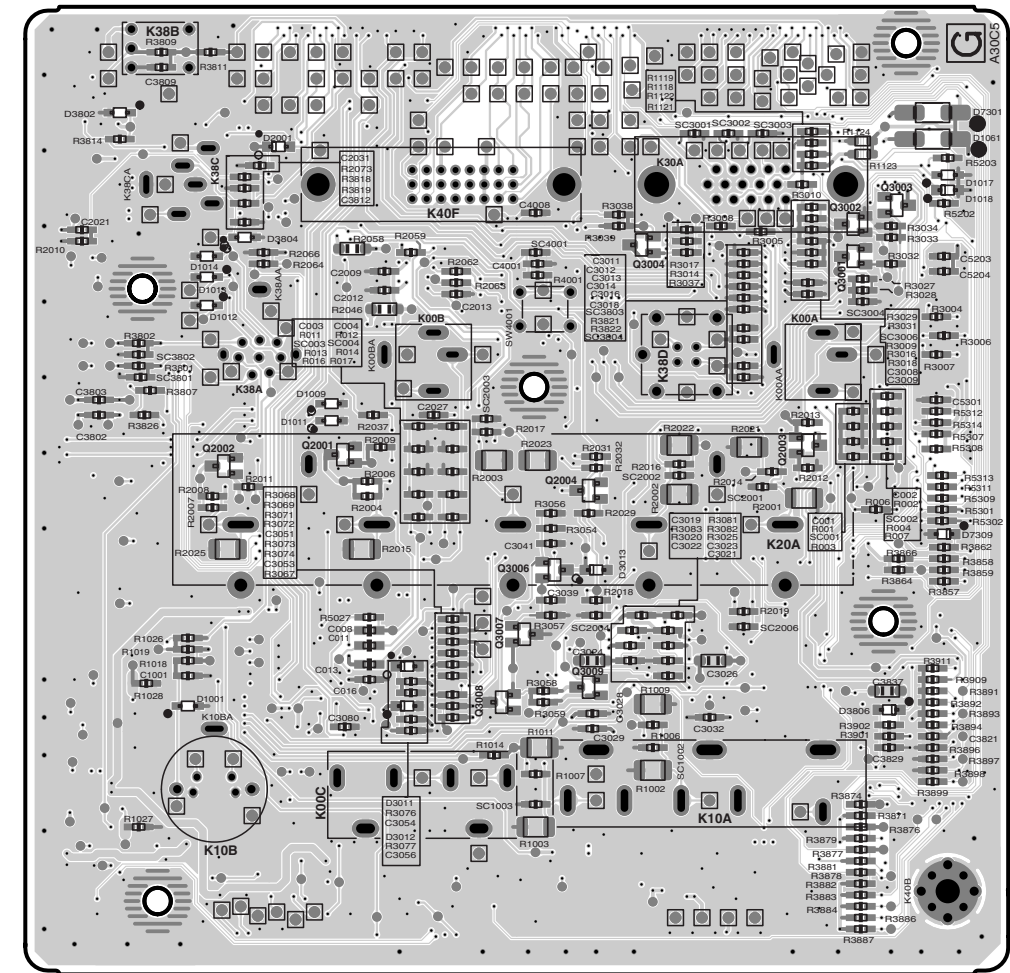
A/V "K40E"

A/V "K40D"

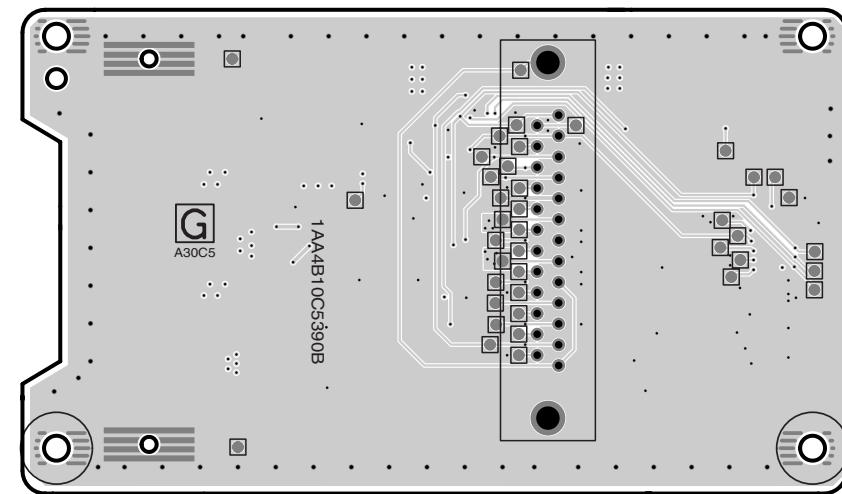
AV (SIDE:A)



AV (SIDE:B)



I/F (SIDE:B)



I/F (SIDE:A)

