

nord®

STAGE PIANOS • SYNTHESIZERS • COMBO ORGAN

Handmade in Sweden by Clavia DMI AB



PRODUCT CATALOG 2017

The Original Red Keyboards

The Nord factory is located in the creative area of Stockholm also known as SoFo, in the district of Södermalm. With everything located in the same building, communication between development and production is only a matter of walking a few meters. We are proud to say all our Nord products are assembled by hand and they all go through a series of tough tests to ensure they'll be ready for a long and happy life 'on the road'.



nord®

## CONTENTS

STAGE PIANOS	NORD STAGE 3	6	NEW
	NORD PIANO 3	16	
	NORD ELECTRO 5	22	
SYNTHESIZERS	NORD LEAD A1	30	
	NORD LEAD 4	38	
	NORD DRUM 3P	46	
COMBO ORGAN	NORD C2D	50	
SOUND LIBRARIES		58	

# IT ALL STARTED BACK IN 1983...

In 1983 founder Hans Nordelius created the Digital Percussion Plate 1 – the first drum pad allowing for dynamic playing using sampled sounds. The **DPP1** was an instant success and soon thereafter the brand name ddrum was introduced. The innovative **ddrum** pads featured real heads and hoops and gained huge popularity – many people still regard them as the best digital drum triggering system around!

In 1995 Clavia released its first synthesizer, the **Nord Lead**. Its unique take on emulation of analog synthesis, combining a distinctive sound with an intuitive user interface made it an instant classic. Magnus Kjellander joined Clavia in '96 and brought with him a new approach to the company in terms of software design. The **Nord Modular**, released in 1997 was the first digital modular synthesizer, possibly the most flexible, innovative synthesizer that has ever been on the market. In 2001 the first **Nord Electro** was released,

introducing stunning emulations of classic vintage electro-mechanical instruments with a level of portability generally not associated with the original instruments...

The **Nord Stage** surfaced in 2005, combining many of Clavia's new areas of expertise in one – acoustic and electric piano sounds, organ emulations, effects and even a synthesizer!

The **Nord C1 Combo Organ** saw the light in 2005, incorporating our 2nd generation tone wheel modeling, rotating speaker simulation, dual manuals and surprisingly lightweight (15kg). **Nord Wave** took the Nord Lead-concept to a new level in 2007 with its capability to use any audio file as an oscillator source in a virtual analog environment, combined with the compact, user friendly interface of a Nord product. In 2008 we released the **Nord Electro 3** and the exclusively licensed sounds from the Mellotron and

Chamberlin. The Electro 3 became one of the most successful products we've ever made.

In 2010 the streamlined Nord Piano was introduced, a lightweight stage piano that featured advanced String Resonance and the unique Nord Triple Pedal with pedal noise.

We let the **Nord Stage 2** out of the bag at NAMM 2011, sporting a new synth section with sample playback support, more memory, the C2 organ simulation and the **Nord Piano** Pedal Noise. Nord Stage 2 raised the bar for how a Stage piano should sound and behave. 2012 was an adventurous year for us, with the launch of the **Nord C2D**, our first organ with physical draw bars as well as the virtual analog drum synthesizer **Nord Drum**. On top of that we also released the **Nord Electro 4** family with the acclaimed Nord C2D tone wheel simulation and introduced the **Nord Piano 2** that allowed splitting and layering sounds from the Nord Sample Library.

In 2013 we celebrated our 30th anniversary as a musical instrument company by releasing the **Nord Lead 4**, **Nord Drum 2**, **Nord Pad** and the **Nord Piano 2 HP!** At NAMM 2014 we announced the **Nord Lead A1** – our award-winning analog modeling synthesizer. 2015 began with the release of the **Nord Electro 5** – a redefined classic and the first Nord instrument ever with a large OLED display. We also updated our flagship model in the **Nord Stage 2 EX** including doubled memory for Nord Piano Library and a new HP76 model. At NAMM 2016 we released the **Nord Piano 3** with Nord's new Virtual Hammer Action Technology, and at Frankfurt Musikmesse the **Nord Drum 3P** was introduced, combining powerful sound design possibilities with a compact form factor, with integrated multipads and added effects. At NAMM 2017 our new flagship instrument was introduced, the **Nord Stage 3**...

We've come a long way from the little basement workshop we started out in back in 1983 – a journey fueled by curiosity, persistence, dedication and love for music!

*The Nord Crew with one of the first Nord Electro 5D units to come off the assembly line, March 2015.*





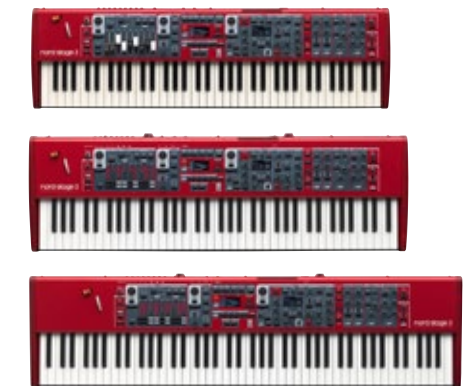
# nord stage 3



## THE ULTIMATE PERFORMANCE KEYBOARD

The Nord Stage 3 is the fifth generation of our successful Stage series continuing our vision of the ultimate instrument for the performing musician.

Our outstanding new flagship instrument features our latest award-winning technologies including the Nord Lead A1 Synth Engine with sample playback, our acclaimed Nord C2D organ, a greatly enhanced Piano Section and extensive hands-on Effects - all in one exceptional performance keyboard.



### SOUND DEMOS

Listen to sound demos of the Nord Stage 3:  
[nordkeyboards.com/nordstage3](http://nordkeyboards.com/nordstage3)



## PERFORMANCE



Two super-clear OLED displays for on-stage clarity, Seamless Transitions when changing programs/sounds, extended Split functionality with optional crossfade, and the addition of the new Song List Mode makes the Nord Stage 3 more intuitive and flexible than ever before for the live performer.



## MASSIVE SONIC FLEXIBILITY

The Nord Stage 3 has three sound generating sections; Piano, Organ and Synthesizer, all of which can be used simultaneously. Furthermore, the Nord Stage 3 has 2 separate slots allowing you to have 2 Pianos, 2 Organs and 2 Synths plus Effects at the same time for massive sonic flexibility.



## SEAMLESS TRANSITIONS

The Nord Stage 3 features automatically seamless transitions when changing sounds or programs while playing.

## SONG MODE

A new Song Mode let's you easily organize a group of Programs for each specific song in the list. Each song can consist of up to 5 different Programs, freely assignable from your existing Programs. You can create unique Song Lists for different bands or situations and the names and order can be easily customized on the fly without connecting it to a computer. The super clear new OLED display offers excellent overview when selecting sounds and editing programs.

## ADVANCED SPLIT FUNCTIONALITY WITH OPTIONAL CROSSFADE

The Nord Stage 3 also features 3 Split Points and a new Split Point Crossfade functionality. Choose among 3 different crossfade widths (Small, Large or Off) indicated by different LED colors.

A new Split Point Editor Mode lets you easily organize and set up Split Points using the OLED display giving you a great overview of the assigned sound sources for each Split zone.

## SUPPORT FOR PROGRAM CHANGE VIA PEDAL

The Nord Stage 3 also supports Program change via pedal allowing for flexible program changes (up/down) while keeping your hands on the keyboard.

## ORGAN SECTION



The Nord Stage 3 features our latest award-winning C2D Organ simulations of B3 Tonewheel and Vintage Transistor Organs plus two brand new Principal Pipe Organs. Two different Organ models can be used simultaneously and the updated vintage 122 Rotary Speaker simulation is also available for each slot independently.

## B3 TONE-WHEEL SIMULATION

The Nord Stage 3 Organ section features our award winning Nord C2D organ including the extremely authentic B3 Tone-Wheel simulation with four different tone wheel settings, ranging from factory new clean to leaky old vintage.

## VINTAGE ROTARY SPEAKER

The Nord Stage 3 features the latest generation of our vintage 122 Rotary Speaker simulation adding an essential character to a live organ performance and features Slow, Fast and Stop mode as well as a Drive control. The 122 Rotary Speaker simulation is available on each slot and can also be used with the Piano or Synth section

## CLASSIC TRANSISTOR ORGANS

The Organ section also features impeccable simulations of the classic 1960's Transistor Organs, Vox Continental and Farfisa Compact with all the classic settings.

## PIPE ORGANS

The Organ section also contains two different new Pipe Organ models. Pipe 1 is a pure Organ with few harmonics. Pipe 2 is a recreation of metal pipes that commonly make up the backbone of a pipe or church organ, with a special detune mode when enabling Vibrato/Chorus.

## PHYSICAL DRAWBARS FOR STAGE 3 COMPACT



The Nord Stage 3 Compact now features Physical Drawbars offering ultimate hands-on experience for the dedicated organ players. This model also supports the Nord Half-moon Switch.

The Nord Stage 3 88 and HP76 features Digital LED Drawbars, offering excellent overview over current settings.



## PIANO SECTION

The greatly enhanced Piano section features doubled memory (2 GB) for the exclusive Nord Piano Library, 120 voice polyphony and creative new Piano Filters.



### THE NORD PIANO EXPERIENCE

The Nord Stage 3 features a wide selection of Grands, Uprights, Electric Pianos, Digital Pianos, Clavinets and Harpsichord from our exclusive Nord Piano Library - all handpicked for their unique characters! The Nord Stage 3 Piano section also features a brand new "Layer" category with rich dynamic layered patches.



Nord's state-of-the-art sampling techniques capture the extraordinary nuances and real character of the source instruments. Our unique 'Advanced String Resonance' and Dynamic Pedal Noise features deliver breathtaking realism and an unsurpassed level of expressiveness.

### PIANO FILTERS

Stage 3 introduces 3 creative new filters for shaping piano sounds, with three settings, Soft, Mid and Bright.

### REPLACEABLE SOUNDS

The Nord Stage 3 Factory Bank features a very extensive selection of the Nord Piano Library but you can easily add or replace any of these sounds using the Nord Sound Manager. Our exclusive Nord Piano Library is constantly updated with new exclusive world class sounds, and always free of charge.

### LONG RELEASE

A Long Release-mode adds a slightly longer release, more suitable for legato playing, emulating a looser damper tension in an acoustic or an electromechanical instrument.

### NORD TRIPLE PEDAL

The Nord Triple Pedal (optional accessory) features our unique dynamic sustain pedal that enables the use of half-pedaling and "release and catch" techniques and also Sostenuto and Soft Pedals. The Nord Triple Pedal also recreates the mechanical sounds of lifting and releasing the damper mechanism, producing the characteristic thomp and sizzle sounds. The Pedal Noise feature responds dynamically to the force/momentum used when pressing or releasing the sustain pedal on the Nord Triple Pedal.



## SYNTH SECTION

The Nord Stage 3 Synth section features the acclaimed Nord Lead A1 Synth Engine combined with Sample Playback and a brilliant OLED display for all Oscillator functions.

### POWERFUL SMART OSCILLATOR

The Lead A1 Synth Engine is renowned for its analog-modelling warmth, and utilises brilliant Smart Oscillator Configurations to deliver stunning results with little programming. There are both Single oscillator setups including Pitch and Shape modes, and Dual oscillator setups including Detune, Sync, Waveform, Bell and Noise Mix modes, FM and Ring Mod. The Synth section also provides 3 Unison modes, without reducing voice polyphony. The Nord Stage 3's new Oscillator section features 5 oscillator categories: Classic, Wave, Formant, Sample and brand new Super Wave (S-wave).

### FLEXIBLE FILTERS

The Synth section features 6 Filter types: Classic Transistor Ladder Filter (LP M), Low Pass 12 and 24, Band Pass, High Pass and a powerful new combined Low Pass and Band Pass (LP+BP) Filter. The Filter section also includes a dedicated Filter Drive with 3 amount settings, as well as selectable keyboard tracking amount (1/3, 2/3 and full).

### SAMPLE PLAYBACK

The Nord Stage 3 Synth section has powerful sample playback capabilities and comes with an outstanding selection of samples from our Nord Sample Library. All samples can be tweaked creatively inside the Lead A1 Synth Engine and it is even possible to create and transfer your own samples using the Nord Sample Editor.



### SYNCRONIZABLE LFO AND ARPEGGIATOR

The Synth section features an Arpeggiator and LFO that can be easily synced to the Stage 3 Master Clock for perfect timing with other elements of the Stage 3, including its effects.



## EFFECT SECTION

The Nord Stage 3 Effect section features a brand new Filter Effect, extended morphable parameters, an enhanced Delay effect and a separate Reverb and Compressor for each slot.

The powerful Effect section features a wide range of instantly tweakable high quality effects all modeled after classic stomp boxes, all available for each slot.

### EFFECT 1

Here you can choose from Tremolo, two Wahs, an Auto-Wah, and an AutoPan. Use the AutoWah with a Clavinet for raw funk licks, create a psychedelic vibe with an Electric Piano on AutoPan, or give a Wurlitzer some body using the Tremolo. There is also a Ring Modulator on board, an effect used by many experimental and electronic musicians.

### EFFECT 2

The two Phasers, two Choruses, the Flanger and a Vibe effect are modeled from the classic analog stomp boxes that define the sound of popular music. These swirling Phasers, metallic Flangers, and thick Choruses that are used by uncompromising professionals everywhere are crystal clear and faithfully simulated on the Nord Stage 3.

### AMP SIM/EQ/FILTER

Features authentic JC, Twin and Small speaker simulations with adjustable Drive, plus a separate Tube Drive simulation. This section also features a 3-band Equalizer with sweepable mid. A powerful addition is the new Filter (LP24/HP24), with Cut-off, Resonance and Mix controls that apply to the entire selected sound source (Organ, Piano or Synth).

### DELAY

The enhanced Delay effect features morphable controls for Tempo, Feedback and Mix (Dry/Wet), as well as controls for Ping-Pong mode and Tap Tempo. New additions include 3 feedback filters (HP/LP/BP) and a dedicated control for enabling the Analog mode.

### COMPRESSOR

The Compressor helps you keep the overall mix tight and under control, and now also features a new Fast mode and is separate for each Slot.

### REVERB

The Nord Stage 3 features six different Reverb types (Hall 1+2, Stage 1+2, and Room 1+2) for adding some ambience to your sounds, and the amount is now morphable. The Reverb effect is now separate per Slot and also features a new Bright mode.

### MASTER CLOCK

The Master Clock function makes it easy to sync effects to other elements, like the arpeggiator, LFO or even one of the other effects. You can easily lock the effect rate to a range of note values – make the delay do quarter note triplets of what arpeggiator is playing, while the LFO gently sweeps the filter up and down in half notes, all perfectly interlocked. The Master Clock can also be controlled by an external MIDI clock – perfect for syncing your parts to a backing track, including tempo changes!



## EXTERN SECTION

The Nord Stage 3 wouldn't be a master keyboard if it couldn't control external devices with ease. The Extern section is designed solely for this purpose, so that any MIDI-connected gear gets seamlessly integrated with the Nord Stage 3's built-in instruments. Zones, splits and layers are handled exactly as if the external equipment was a part of the Stage 3 itself. All settings are saved together with a Program so advanced setups can be immediately recalled in real-time during a performance. You can even use the Extern Section to automatically transmit Bank Select and Program Change messages to your external units.

## KEYBEDS



## HAMMER ACTION

The 3 88 keybed uses our top-of-the-line fully weighted hammer action piano keys. Perfect for electric and acoustic piano sounds, but also works great for organ playing. Key range A-C.



## HAMMER ACTION PORTABLE (HP)

The Stage 3 HP76 keybed uses amazingly portable weighted hammer action piano keys. Perfect for electric and acoustic piano sounds, but also works great for organ playing. Key range E-G.



## SEMI WEIGHTED WATERFALL

The Stage 3 Compact keybed type uses semi weighted organ type keys with a rounded "waterfall" tip, brilliant for rapid organ shredding and synthesizer licks, but also plays nice with piano sounds. Key range E-E.

## OPTIONAL ACCESSORIES

## KEYBOARD STAND EX

The Nord Stage 3 88/HP76 can be fitted with legs reminiscent of a classic electric piano. They are very easy to assemble and disassemble for transport. The stand has two selectable heights.

## WOOD KEYBOARD STAND

Elegant matte laquered Keyboard Stand in a partially solid wood construction for excellent stability. Bottom metal plate accommodates the Nord Triple Pedal. Fixed at standard Grand Piano height.

## SOFT CASE

A semi-hard, padded, custom sized soft case is available for safe and comfortable transportation. The soft case for the Stage 3 88/HP76 models also features wheels.

## MUSIC STAND EX

An easily attachable music stand is also available for the 88/HP76 models.

## SUSTAIN PEDAL

Sustain pedal. Included with Stage 3 88/HP76.

## NORD TRIPLE PEDAL

The Nord Triple Pedal features a unique dynamic Sustain pedal enabling the Pedal Noise-feature, a sostenuto pedal for sustaining selected notes and a Soft Pedal.

## DUST COVER

Cover and protect your Nord unit with the matching Dust Cover. Included with Stage 3 88/HP76.



Half Moon Switch (Compact)

Sustain Pedal

Dust Cover

Soft Case 76/88

## TECHNICAL SPECIFICATIONS

## GENERAL

- Master Level Control
- Wooden Pitch Stick
- Modulation Wheel
- 400 Programs - 8 Banks with 10 Pages each. Each Page has 5 Program locations
- Song Mode - 8 Banks with 50 Songs, 5 Programs per Song
- 5 Live Buffers
- 2 Individual Slot Setups
- 3 Morph sources (Modulation Wheel, Control Pedal, Aftertouch)
- Global Mono output
- Programmable Transpose +/- 6 semitones
- Master Clock functionality with manual, external and tap-tempo rate control
- Internal and MIDI clock source
- MIDI over USB functionality
- Level control
- Aftertouch
- Up to 3 Split Points (4 Keyboard Zones) with visual LED indication between zones
- 3 Split Points with crossfade options: Lrg, Sml or Off
- Keyboard Zones editor mode

## ORGAN SECTION

- Nord C2D B3 Tone wheel Organ simulation
- Vox Continental and Farfisa models
- 2 Digital Pipe Organ models
- 9 digitally controlled Drawbars
- Physical Drawbars (Compact model only)
- Drawbar Live mode (Compact model only)
- Percussion controls
- Vibrato / Chorus control
- Two Drawbar Presets per Slot
- 2-Part Multitimbral (2 manuals)

## SYNTH SECTION

- Nord Lead A1 Synth Engine with Sample Playback
- Dedicated OLED Display for Oscillator section
- 480 MB Memory for Nord Sample Library
- All samples can be replaced using Nord Sound Manager (Mac/Win)
- 34 Voice polyphony
- Oscillator Types: Classic, Wavetable (Wave), Formant, Super Wave (S-Wave) and Sample
- Oscillator Configurations: Pitch, Detune\*, Shape\*, Sync\*, Sine, Triangle, Square, Saw, Bell and Noise Mix, FM\* and Ring Mod
- \*=Not available for Sample/Superwave

## PIANO SECTION

- 2 GB memory for Piano sounds
- All sounds can be replaced using Nord Sound Manager (Mac/Win)
- 120 Voice Polyphony
- Categories: Grand, Upright, Electric, Digital, Layer and Clav/Harpsichord
- 4 Selectable Velocity Curves
- Dedicated Piano filters
- Clavinet EQ controls
- String Resonance (Generation 2) on acoustic Grand Pianos and Uprights
- Selectable Soft Piano Release
- Pedal Noise when used with Nord Triple Pedal (optional accessory) on selected acoustic and electric pianos
- Layer (Slot) Detune functionality
- 2-Part Multitimbral

## EFFECTS

- Effect 1: Ring Modulator, Tremolo, Auto Pan, Wah-Wah, AutoWah 1, AutoWah 2
- Effect 2: Flanger, Vibe, 2 Phasers, 2 Choruses
- Delay with Tempo, Feedback and Mix (Dry/Wet) controls, Ping Pong (stereo taps), Tap-Tempo, Feedback Filter (HP/LP/BP) and panel selectable Analog mode.
- 3 types of Speaker simulations, JC, Twin and Small
- Filter Mode (HP24/LP24) with Cut-off, Resonance and Mix controls
- Tube amp simulation with adjustable overdrive
- 3-band Equalizer with sweepable mid. EQ ranges: 100 Hz, 200 Hz - 8 kHz and 4 kHz
- Rotary Speaker: selectable speed (Stop, Slow and Fast) and separate overdrive
- Extended Morphable Parameters - (Filter Resonance, Reverb Dry/Wet, Delay Feedback, Amp Drive)
- Effect rates/tempo can be synchronized to the Master Clock
- Compressor with Fast Mode
- Reverb - 6 algorithms with Bright Mode

## KEYBOARD

- Nord Stage 3 88: 88-key Velocity sensitive Hammer Action keyboard. Range: A-C.
- Nord Stage 3 HP76: 76-key Velocity sensitive Hammer Action Portable keyboard. Range: E-G
- Nord Stage 3 Compact: 73-key Velocity sensitive Semi Weighted Waterfall keyboard. Range: E-E

## CONNECTIONS

- 4 Assignable Audio Outputs - 1/4", 6,35 mm jacks, unbalanced
- Stereo Headphone output - 1/4", 6,35 mm stereo jack
- 1 Monitor input - 1/8", 3,5 mm stereo jack
- Sustain Pedal - 1/4", 6,35 mm jack. Use a momentary pedal, like e.g. Roland DP-2, DP-6, Yamaha FC-4, FC-5, Fatar VFP1-25 etc.
- Sustain input compatible with Nord Triple Pedal (sold separately)
- Rotor Pedal - 1/4", 6,35 mm jack. Use a momentary pedal or a switch type pedal
- Organ Swell Pedal - 1/4", 6,35 mm TRS stereo jack. Use a Control/Expression pedal like e.g. Yamaha FC-7, Roland EV-5 etc.
- Control Pedal - 1/4", 6,35 mm TRS stereo jack. Use a Control/Expression pedal like e.g. Yamaha FC-7, Roland EV-5 etc.
- Program Change Pedal input - 1/4", 6,35 mm jack. Use a momentary two-button pedal like e.g. Boss FS-6, Boss FS-7 etc.
- MIDI In - 5 pin DIN connectors
- MIDI Out - 5 pin DIN connectors
- USB - type B connector for USB MIDI, Software Update and Sound Transfer
- Power Cord with IEC C14 connector

## INCLUDED ACCESSORIES

- User Manual
- Dust cover (88 and HP76 only)
- Sustain pedal (88 and HP76 only)
- Power cord
- Nord Sample and Piano DVDs
- USB cord

## DIMENSIONS

- Nord Stage 3 88: 1287 x 118 x 334 mm (50.7 x 4.7 x 13")
- Nord Stage 3 HP76: 1122 x 127 x 347 mm (44 x 5 x 13.6")
- Nord Stage 3 Compact: 1070 x 104 x 302 mm (42 x 4 x 12")

## WEIGHT

- Nord Stage 3 88: 19 kg (41.8 lbs)
- Nord Stage 3 HP76: 12,5 kg (27,5 lbs)
- Nord Stage 3 Compact: 10 kg (22 lbs)

Specifications subject to change without notice.







NORD PIANO 3

nord piano 3  
VIRTUAL HAMMER ACTION TECHNOLOGY

# nord piano 3

VIRTUAL HAMMER ACTION TECHNOLOGY

## TAKING PIANO REALISM TO A NEW LEVEL

The new Nord Piano 3 features our Virtual Hammer Action Technology that simulates the movement of the hammers in a Grand Piano, capturing its characteristics with exceptional dynamics and breathtaking level of authenticity.



Winner of Best Stage Keyboard at MIPA Award 2016 & 2017



SOUND DEMOS  
Listen to sound demos of the Nord Piano 3:  
[nordkeyboards.com/piano3](http://nordkeyboards.com/piano3)





## HIGHLIGHTS

- Nord Virtual Hammer Action Technology for greatly improved key response
- 88-note Triple Sensor keybed with improved grand weighted action
- 2-part multitimbral (Piano/Sample)
- Layer/Split functionality
- Nord Piano Library support
- Nord Sample Library support
- Advanced String Resonance (Gen 2)
- Pedal Noise
- Long Release
- Effects section
- USB MIDI

## THE NORD PIANO 3 EXPERIENCE



By adding a third sensor to the keybed, key movements can be determined with stunning precision. The result is a keyboard action that handles dynamic playing with amazing control, at any velocity level. The Nord exclusive Virtual Hammer Action

Technology simulates the hammer movements in a Grand Piano, delivering outstanding authenticity and dynamic response.

### REPETITIONS

The Nord Virtual Hammer Action Technology enables you to produce a new note without lifting the key completely, allowing for smoother repetitions as the tone is not completely dampened between the strokes. Just like the fluent transitions of an acoustic grand piano action.

### EXTENDED TRIGGERING RANGE

The new keyboard technology makes both top and bottom triggering possible, resulting in amazing control when playing percussively as well as pianissimo with the keys pressed down almost all the way.

### GRAND WEIGHTED ACTION

The keybed has added weight for improved dynamic control providing authentic Piano touch and feel. Each keybed in every Nord Piano 3 is calibrated at the Nord factory to ensure an even response by every individual key.



## PIANO SECTION

The Nord Piano 3 features 1 GB of memory dedicated to the exclusive sounds from the Nord Piano Library, doubled capacity from the Nord Piano 2, filled with uniquely sampled acoustic and electric instruments, with lots of velocity levels and dynamic control - all of them carefully selected for their specific and individual character.

Our stunning Factory Bank features 7 Grand Pianos, 5 Upright Pianos, 11 Electric Pianos, Clavinet and Harp-sichords. Replacing the sounds in your Nord Piano 3 is simply a matter of dragging and dropping files in the Nord Sound Manager for Mac and Windows, included with every instrument.

See [nordkeyboards.com/nordpianolibrary](http://nordkeyboards.com/nordpianolibrary) for a guided video tour on how to transfer sounds!

## SAMPLE SYNTH

The Sample Synth section in the Nord Piano 3 supports the Nord Sample Library 2.0 - our essential selection of high quality sampled sounds from a wide range of genres including the exclusively licensed sounds of the Mellotron and Chamberlin.

The Nord Sample Library 2.0 is constantly updated and new additions can be downloaded for free!

Visit [nordkeyboards.com/nordsamplelibrary](http://nordkeyboards.com/nordsamplelibrary) to learn more and to listen to the sounds available!

## EFFECT SECTION

The Nord Piano 3 Effect section features great, tweakable effects for instantly adding some dirt, glimmer or atmosphere to your sound. All effects are in Stereo.

Effect 1 - Pan, Tremolo, Wah-wah and Ring Modulator. All effects can be controlled with a Control Pedal.  
 Effect 2 - Phaser, Flanger, Chorus, a new Vibe effect and two selectable depths for each effect.  
 Delay - Stereo delay effect with Tap Tempo button  
 Three band EQ, with sweepable mid  
 Compressor/Amp - Twin, JC, Small, Compressor and a new Tube Overdrive effect.

Each of the effects sections can be assigned to either the Piano or Sample Synth section.

Master Effects  
 Reverb with six modes - Room, Stage, Hall each with a Bright option.

## TECHNICAL SPECIFICATIONS

### GLOBAL

- OLED Display
- 4 banks with 50 programs - 200 locations
- Organize functionality for programs
- Live Mode - 5 Live programs
- Global Transpose: +/- 6 semitones
- Program Transpose: +/- 6 semitones
- Fine-tune: +/- 50 Cents
- Kbd Touch: 4 velocity response curves
- Triple Sensor keybed with Virtual Hammer Action Technology
- Split functionality with selectable split point and LED indication
- Layer functionality
- Mono Output option
- Dynamic Sustain Pedal action with the included Nord Triple Pedal
- USB-MIDI
- Free OS updates

### PIANO SECTION

- 6 types - Grand, Upright, Electric Piano 1, Electric Piano 2, Clavinet and Harpsichord.
- Each category can contain up to 9 different models.
- Organize functionality for piano sounds
- 40/60 Voices Polyphony (stereo/mono pianos)
- Advanced String Resonance (Generation 2) - adjustable amount
- Selectable Soft Release for Grand, Upright, Electric Pianos and Harpsichord
- Selectable Pedal Noise for Grand, Upright and Electric Pianos 1 - adjustable amount
- Octave Transpose: -1/+1

### SAMPLE SYNTH SECTION

- 15 Voices Polyphony
- Organize functionality for samples
- Amp envelope with Attack and Decay/Release
- Selectable velocity sensitive low pass filter and dynamic range
- Octave Transpose: -1/+3
- Sustain pedal can be set as sustain or latch pedal for the Sample Synth section.
- Volume controllable with Volume Pedal (not included)

### MEMORY

- Approx. 1 GB dedicated to the Nord Piano Library
- Approx. 256 MB dedicated to the Nord Sample Library 2.0

### EFFECTS SECTION

- Effect 1
- Pan, Tremolo, Wah and Ring Modulator
  - Three selectable depths for the Pan and Tremolo, rate controlled with the Effect 1 Rate knob
  - Tremolo, Pan, Ring-Mod and Wah can be controlled with Control Pedal
- Effect 2
- Phaser 1, Phaser 2, Flanger, Chorus 1, Chorus 2 and Vibe
  - Two selectable depths for each effect
  - Amp Simulations, Comp and EQ
  - Comp/Amp - three amp/speaker simulations, Tube Overdrive
  - Drive/Compression amount controlled with the Drive knob
  - Three band EQ, with sweepable mid. +/- 15 dB gain/attenuation
- Master Effects
- Dedicated Reverb with Room, Stage and Hall algorithms, each with an additional Bright mode
  - Dedicated Delay Effect - Rate, Amount and Tap-tempo function

### CONNECTIONS

- 2 Audio outputs L & R - 1/4", 6,35 mm jacks, unbalanced
- 1 Monitor input - 1/8", 3,5 mm stereo jack
- 1 Headphone output - 1/4", 6,35 mm stereo jack
- 1 Piano pedal input - 1/4", 6,35 mm jack. Use the included Nord Triple Pedal or a momentary pedal, like e.g. Roland DP-2, DP-6, Yamaha FC-4, FC-5, Fatar VFP1-25 etc
- 1 Volume Pedal input - 1/4", 6,35 mm TRS stereo jack. Use a Control/Expression pedal like e.g. Yamaha FC-7, Roland EV-5 etc.
- MIDI In, MIDI Out - 5 pin DIN connectors
- USB - type B connector - for transferring sounds and USB-MIDI
- IEC C14 power connector

### DIMENSIONS

- Nord Piano 3: 1287 mm (50.7"), 121 mm (4.8"), 340 mm (13.4")
- Pedal: 264 mm (10.4"), 224 mm (8.8"), 70 mm (2.8")

### WEIGHT

- Nord Piano 3: 18,2 kg (40.3 lbs)
- Pedal: 2 kg (4.4 lbs)

### INCLUDED ACCESSORIES

- Nord Triple Pedal
- User Manual
- Power cord
- Nord Piano Library v5 DVD-ROM
- Nord Sample Library 2.0 DVD-ROM

## OPTIONAL ACCESSORIES



Wood Keyboard Stand

### WOOD KEYBOARD STAND

Elegant matte laquered Keyboard Stand in a partially solid wood construction for excellent stability. Bottom metal plate accommodates the Nord Triple Pedal. Fixed at standard Grand Piano height.



Keyboard Stand EX

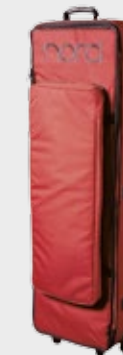
### KEYBOARD STAND EX

The Nord Piano 3 can be fitted with legs reminiscent of a classic electric piano. They are very easy to assemble and disassemble for transport. The stand has two selectable heights.

### SOFT CASE

Keep your Nord instrument in perfect shape with the ultimate soft case, featuring a plush interior, thick padding, and the distinctive Nord red color. The large-sized pocket can hold all your cables and accessories, including the Keyboard Stand EX and Music Stand.

The Soft Case 88 features mid-level carrying handles and wheels.



Soft Case Piano 88



Dust Cover

### DUST COVER

Cover and protect your Nord unit with the matching Dust Cover.



Music Stand EX

### MUSIC STAND EX

The strong, metal Music Stand EX attaches to mounts included on the back of your instrument, and can accommodate four sheets of music. The stand is easily mounted without the use of any tools, and can be fitted in the soft case for transport. Dimensions: 70 x 25 cm (27.6 x 9.8").

### FREE UPGRADES

OS upgrades, pianos and samples can be downloaded free of charge from [www.nordkeyboards.com](http://www.nordkeyboards.com)



The crystal clear OLED display provides an excellent overview when selecting or editing Sounds, Effects and Programs on stage.



# nord electro 5

## REDEFINED CLASSIC

With greatly expanded memory, the added ability to split and layer and a live focused program section, the new Nord Electro 5 is a highly refined, focused yet flexible stage keyboard.



**SOUND DEMOS**  
Listen to sound demos of the Nord Electro 5:  
[nordkeyboards.com/nordelectro5](http://nordkeyboards.com/nordelectro5)



## HIGHLIGHTS

- Split and Layer
- Big OLED Display
- 1 GB for Piano Library
- 256 MB for Sample Library
- Dedicated Sample Synth section
- Nord C2D Organ Engine
- Improved Click Modeling
- Rotary Speaker Simulation
- Long Release
- Advanced String Resonance (Gen 2)
- Upper Split MIDI Split for external MIDI keyboard
- Effects section
- USB MIDI
- Three models SW73, SW61 and HP



The entire Nord Piano Library and Nord Sample Library is included on DVDs and new additions can be downloaded free from nordkeyboards.com.

## AUTHENTIC SOUNDS

### NORD PIANO LIBRARY

The new Electro 5 series all feature 1GB of Piano Sample memory, allowing you to bring even more of our unique sampled acoustic and electric pianos on stage.



The subtle but effective Sympathetic String Resonance technology derived from the Nord Piano is now implemented in the Electro 5 delivering an unprecedented degree of realism to your performance when using our Grand or Upright pianos.

The piano section of the Electro 5 contains acoustic and electric pianos from the ever-expanding, and freely downloadable Nord Piano Library. Expertly sampled and brimming with unique character, the Grand and Upright Acoustic Pianos, legendary Electric Pianos, Clavinet and Harpsichord, provide a stunning sound palette.

The entire Nord Piano Library is included on DVDs and new additions can be downloaded free on the Nord Piano Library page. Replacing the sounds is simply a matter of dragging and dropping files in the Nord Sound Manager for Mac and Windows.

The Long Release feature is suitable for legato playing styles and the Advanced String Resonance feature on Grand and Upright Pianos can be turned off when desired. 4 Dynamic Response Curves are available for customizing the keyboard response to your playing style, including a new softer curve.

Read more about the Nord Piano Library in the Sound Libraries section.

### NORD SAMPLE LIBRARY

The Electro 5 features a dedicated Sample Synth section with expanded memory for the Nord Sample Library (256 MB) and additional controls for attack, decay/release and dynamics (filter/velocity). The Nord Sample Library features a broad selection of free sounds from acclaimed sample producers as well as exclusively licensed sounds of the legendary Mellotron and Chamberlin.



The Nord Electro 5 has 256 MB of memory dedicated to the Nord Sample Library. Our efficient, lossless compression algorithm makes it possible for us to fit samples up to three times the size compared to standard linear sample players.

### NORD SAMPLE EDITOR

The included Nord Sample Editor makes it possible to add any sound you want to your Electro 5. The Sample Editor can use audio files in the .wav format and has great tools to assist you in getting the results you want. Mapping several samples across the keyboard or creating seamless loops has never been easier.

Read more about the Nord Sample Library in the Sound Libraries section.



The Nord Electro 5D 61 and 73 feature physical drawbars, while the Nord Electro 5 HP features our Digital LED drawbars.

## ORGAN SECTION

### TONE WHEEL ORGAN

The Electro 5 Organ section features a new additional Principal Pipe Organ mode as well as the Tone Wheel simulation and the highly acclaimed Rotary Speaker simulation of a vintage 122 unit from the award winning Nord C2D Combo Organ.



The C2D B3 Tone Wheel engine is the result of over a decade of perfecting our tone wheel simulations, a journey that started with the original Nord Electro and followed by the award winning Nord C1 and Nord C2 Combo Organs. Not only have we analyzed the signals from each of the 91 spinning tone wheels inside several original instruments - we have also paid years of attention to each and every one of the intricate details that make up the characteristics of the actual sound in a vintage organ.

A new B3 Tone Wheel Bass feature gives you the classic 16' and 8' bass drawbars in the left hand and can even be used with the Piano and Sample section for a thick and meaty bottom.

Both the Electro 5D 61/5D 73 feature physical Drawbars and can accommodate the Nord Half-Moon switch with stop/slow/fast modes (optional accessory).

### VOX AND FARFISA

The Farfisa\* and Vox\* models are just as impressive as the B3, simulating the behavior and unique response of the original instruments. The Farfisa Compact Deluxe, considered by many to be the mother of transistor organs, involves routing matrixes and complex filter combinations that offer a tailored sound with massive energy and high-end.

The Vox\* Continental's brute design brings you a more hollow tone, but with a very intense character. Both these transistor organs have their own unique, irreplaceable personalities. Combine them with any of the Amp simulations, add some distortion, adjust the EQ and they will definitely get you through any organ gig with flying colors.



The Nord Electro 5 series includes the same Rotary Speaker simulation of a vintage 122 unit as the Nord C2D.

## PERFORMANCE

### SPLIT AND LAYERS

The Nord Electro 5 has two sound slots that can be combined in a layer or split over the keyboard (Organ/Piano, Piano/Sample Synth or Sample Synth/Organ). Each of the sound slots can have specific effects, Control Pedal and/or Sustain Pedal assigned to them – for example chorus and Sustain Pedal on the Piano and some Delay and a Control Pedal on the Sample Synth. The split function includes 6 split points, indicated with LED lights.

Each of the effects sections can be assigned freely to either Upper or Lower parts. An Upper Split MIDI feature allows you to play the Upper Part section from an external MIDI keyboard.

### SET LIST FEATURE

The Electro 5 features a new Set List mode that lets you easily organize a group of Programs for each specific song in the list. Each song can consist of up to 4 different Programs, freely assignable from your existing Programs. You can create unique Set Lists for different bands or situations and the names and order can be easily customized on the fly without connecting it to a computer.

The super clear new OLED display offers excellent overview when selecting sounds and editing programs.

### ORGANIZE FUNCTION

A new Organize function allows you to effortlessly rearrange the order of Programs and Samples without affecting your Programs or any Setlists that use them. A smart placeholder feature lets you create customized dividers in the Program and Sample lists, perfect for grouping different types of sounds according to your own taste.



## KEYBEDS



### HAMMER ACTION PORTABLE (HP)

The Nord Electro 5 HP features an amazingly portable weighted hammer action piano keybed. Perfect for electric and acoustic piano sounds, but also works great for organ playing.

Key range E-E.



### SEMI WEIGHTED WATERFALL (SW)

The Nord Electro 5D 61 and Nord Electro 5D 73 features semi weighted organ type keys with a rounded "waterfall" tip, brilliant for rapid organ shredding and synthesizer licks, but also plays nice with piano sounds.

Key range C-C on Electro 5D 61 and E-E on Electro 5D 73.



## EFFECTS

The Nord Electro 5 Effects section features great, tweakable effects for instantly adding some dirt, glimmer or atmosphere to your sound, and all effects are now in Stereo.

The Amp/Speaker simulation now features the same Vintage 122 Rotary Speaker simulations as found in our flagship organ, Nord C2D. Also, there's a flexible Stereo Delay effect with Tap-Tempo and Ping-Pong mode.

### EFFECT 1

Pan, Tremolo, Wah-wah and Ring Modulator. All effects can be controlled with a Control Pedal.

### EFFECT 2

Phaser, Flanger, Chorus, a new Vibe effect and two selectable depths for each effect.

### DELAY

Stereo delay effect with Tap Tempo button and Ping-Pong mode.

### EQUALIZER

Three band EQ, with sweepable mid.

### AMP/COMPRESSOR

Twin, JC, Small, Rotary, Compressor and a new Tube Overdrive effect.

### MASTER EFFECTS

Reverb with five algorithms - Room, Stage Soft, Stage, Hall, Hall Soft

## OPTIONAL ACCESSORIES

### SOFT CASE

Keep your Nord instrument in perfect shape with the ultimate soft case, featuring a plush interior, thick padding, and the distinctive Nord red color. The mid-sized pocket on the lid will hold all your cables and accessories. Carrying handles, shoulder strap, and two backpack straps allows you to carry your instrument any way you want. The soft case for the Nord Electro 5 HP also features wheels.



Soft Case  
(5D 61/73)



Soft Case (5 HP)



Keyboard Stand EX / Music Stand EX (5 HP)



Dust Cover



Half Moon Switch  
(5D 61/73)



Sustain Pedal

### DUST COVER

Cover and protect your Nord unit with the matching Dust Cover.

### KEYBOARD STAND EX

Nord Electro 5 HP only.

### SUSTAIN PEDAL

Sustain pedal.

## COMPARISON CHART

	nord electro 5 <sup>D</sup> SEMI WEIGHTED WATERFALL 61	nord electro 5 <sup>D</sup> SEMI WEIGHTED WATERFALL 73	nord electro 5 <sup>HP</sup> HAMMER ACTION PORTABLE 73
<b>PERFORMANCE</b>			
Keyboard	61-key (C-C) velocity sensitive Semi Weighted Waterfall keyboard	73-key (E-E) velocity sensitive Semi Weighted Waterfall keyboard	73-key (E-E) Hammer Action Portable Fully Weighted keyboard
Drawbars	Physical Drawbars	Physical Drawbars	Digital LED Drawbars
<b>DIMENSIONS</b>	900 x 97 x 296 mm (35.4 x 3.8 x 11.7")	1066 x 97 x 296 mm (42" x 3.8" x 11.7")	1074 x 121 x 344 mm (42.3.4 x 4.8 x 13.5")
<b>WEIGHT</b>	8.1 kg (17.85 lbs)	9.2 kg (20.28 lbs)	11.4 kg (25.13 lbs)

For additional specifications, see the Nord Electro 5 specification page.

## TECHNICAL SPECIFICATIONS (ALL MODELS)

### PERFORMANCE FEATURES

- Use 2 sound engines in parallel, set up as a layer or a split.
- 6 Keyboard Split points (C3-F5)
- Set List mode lets you easily organize a group of Programs for each specific song in the list. Each song can consist of up to 4 different Programs, freely assignable from your existing Programs.
- 3 Live Slots
- MIDI Upper Split enables control of the entire range of a sound engine selected for Part Upper from an external MIDI keyboard, while utilizing the keyboard of the Nord Electro 5 for the selected sound of Part Lower.
- MIDI features for individual control of Part Lower and Part Upper, and for controlling external sound modules from the upper part of a split.

### ORGAN SECTION

- Nord C2D Tone wheel engine
- 4 distinct organ models: B3, Principal Pipe, Vox Continental, and Farfisa with full polyphony.
- B3+Bass mode provides the traditional B3 Pedal tone wheels.
- 9 physical drawbars (Nord Electro 5D 61 / 5D 73).
- 9 digitally controlled drawbars (Nord Electro 5 HP)
- Two complete organ registrations for every program
- Percussion with 2nd, 3rd, normal/soft, fast/slow for the B3 model.
- User adjustable percussion levels, percussion decays and keyclick level.
- Vibrato / Chorus Control with separate functionality for each model (the classic C1, C2, C3, V1, V2, V3 options for the B3, Vibrato for the Farfisa).
- 4 Tonewheel modes: select the level of "vintage" you wish to have in your B3 sound.
- Mount for Half-Moon switch (5D 61/73 only)

### PIANO SECTION

- All of the sounds in the Piano and Sample section can be replaced using the Nord Sound Manager (Win/Mac).
- 6 selectable types of pianos - Grand, Upright, EP1, EP2, Clav and Harpsichord. Each type can contain several different models.

- 1 GB allocated to the Piano Library
- Stereo pianos can be played back in mono.
- String Resonance (Gen 2)
- Long Release
- 4 Dynamic Curves
- 40-60 Voices polyphony.

### SAMPLE SYNTH SECTION

- 256 MB memory dedicated to the Nord Sample Library
- All samples can be replaced using the Nord Sound Manager application
- The Sample Synth section comes shipped with a selection of 100+ samples from the Nord Sample Library
- Attack and Decay/Release control
- Dynamics control (Filter/Velocity)
- 15 Voice polyphony for Sample Library sounds.

### EFFECTS SECTION

- Effect 1 – Tremolo 1, Tremolo 2, Pan 1, Pan 2, Wah, and Ring Modulator. All controllable using a Control Pedal.
- Rate controlled with the Effect 1 Rate knob.
- Effect 2 – Phaser 1, Phaser 2, Flanger, Chorus 1, Chorus 2 and Vibe effect.
- Deep mode, for more pronounced impact. Rate controlled with the Effect 2 Rate knob.
- Spkr/Comp - three amp/speaker simulations, compressor and rotary speaker.
- Drive/Compression amount controlled with the Drive knob.
- Rotary speed controls - Slow, Fast and Stopped.
- User adjustable rotary treble and bass rotor speeds and acceleration rates.
- Close or Normal microphone placement for 122 Rotary Speaker simulation.
- Dedicated Delay Effect with 4 feedback modes, stereo Ping-Pong option, Tap-tempo and Dry/Wet control.
- Dedicated global Reverb with five algorithms - Room, Stage Soft, Stage, Hall, Hall Soft - and Dry/Wet control.
- Three band EQ with sweepable mid. +/- 15 dB gain/attenuation.

### GLOBAL FEATURES

- 400 (8x50) Program positions.
- Output Routing option for sending Part Lower to left output and Part Upper to right Output.
- Nord Electro 5D 61: 61-key (5 octaves, C-C) Velocity sensitive Semi Weighted Waterfall keyboard
- Nord Electro 5D 73: 73-key (6 octaves, E-E) Velocity sensitive Semi Weighted Waterfall keyboard
- Nord Electro 5 HP: 73-key (6 octaves, E-E) Velocity sensitive Hammer Action Portable keyboard

### CONNECTIONS

- 2 Audio outputs L & R - ¼", 6,35 mm jacks, unbalanced
- 1 Monitor input - 1/8", 3,5 mm stereo jack
- 1 Headphone output - ¼", 6,35 mm stereo jack
- 1 Control pedal input - ¼", 6,35 mm TRS stereo jack, like Yamaha FC7, Roland EV-7, Roland EV-5, Korg EXP2 and Korg XVP10.
- 1 Sustain pedal input - ¼", 6,35 mm jack. Use a momentary pedal, like e.g. Roland DP-2, DP-6, Yamaha FC-4, FC-5, Fatar VFP1-25 etc.
- 1 Rotary Speaker speed switch pedal input - ¼", 6,35 mm jack. Use a momentary pedal or a switch



# nord lead A1

analog modeling synthesizer

## THE NEED FOR SPEED

This is the new Nord Lead A1 analog modeling synthesizer – a stunning sounding synthesizer with a simplified yet hugely powerful front panel interface.

Producing stand-out sounds for live or for the studio, the Lead A1 is ideal for all musical genres. Thanks to its carefully thought-out user interface, the Lead A1 encourages experimentation, allows for far speedier programming than would otherwise be possible, and ultimately delivers sensational sonic results.



TEC Award 2015  
"Best Musical Instrument Hardware"



### SOUND DEMOS

Listen to sound demos of the Nord Lead A1:  
[nordkeyboards.com/a1](http://nordkeyboards.com/a1)





## HIGHLIGHTS

### OSCILLATORS

- 8 Oscillator Configurations
- Pitch, Detune, Shape, Sync, AM, Noise, Sub Mix, FM
- Traditional Analog and Digital Waveforms

### MODULATION

- LFO with 5 waveforms
- Mod Envelope

### FILTER

- 12, 24 dB low-pass filters
- High-pass and Band-pass filters
- Transistor and diode ladder filter simulations of Mini and TB-303

### EFFECTS

- Ensemble, Chorus, Phaser, Flanger, Ring Modulator, Drive

### PERFORMANCE

- 4-part multi-timbral
- Master Clock Sync of Arpeggiator, LFO and Delay
- Velocity and Mod Wheel Morph
- USB MIDI

### SPECIAL FEATURES

- Like Button
- Mutator
- Extra Fat Unison mode



## OUR BEST-EVER ANALOG MODELING...

At the heart of the Lead A1 is our new analog modeling engine. Taking our virtual analog synthesis to the next level, this modeling recreates a total analog signal path with uncanny realism, and is capable of immense sonic variety. With 26-voice polyphony and four simultaneous synthesizer parts, the Lead A1 is a true synthesizer powerhouse that goes far beyond the current trend for limited capability analog reissues.

## ...COMBINED WITH OUR MOST INTUITIVE INTERFACE

Fundamental to the design of the Lead A1 is a brand new simple yet sophisticated front panel interface. The design is in fact the result of requests from professional players – even the most experienced programmers - who need to create the perfect sound as quickly as possible for today's live or studio time demands. The Lead A1 allows easy patch creation and experimentation thanks to a new and unique oscillator section, pre-programmed modulation matrix, and simplified ADR envelopes. Dive in and create incredible patches far quicker than would normally be possible with a synthesizer of such power.

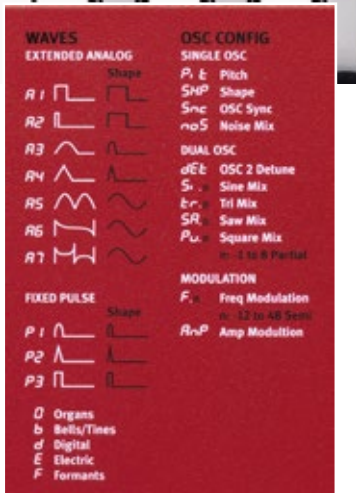


## OSCILLATOR SECTION

The Lead A1's new Oscillator section generates 47 different waveforms from classic analog to digital harmonic and inharmonic waves, whilst unique Oscillator Configuration Shortcuts make programming more immediate than ever. Start with a single Oscillator waveform select an Oscillator Configuration Shortcut - Pitch, Detune, Shape, Sync, Sub Mix, FM, AM or Noise - and use the

Adjust knob to adjust the settings of the configuration.

The end result is high speed programming without the need for the usual complexity of routing and patching, and with the opportunity for ready experimentation. A fast track to stunning sound design for both advanced and less experienced programmers.



## OSCILLATOR CONFIGURATIONS

**PITCH** Adjusts the pitch of the original oscillator.

**DETUNE** Adds a second oscillator, with control over its pitch.

**SUB MIX** Adds a second oscillator, with a choice of waveform shapes and pitches.

**SHAPE** The shaping of the Panel Analog, Extended Analog and Fixed Pulse waveforms uses a traditional waveshaping method, the other waveforms are changed with a spectral shaping process.

**SYNC** Emulates Hard sync by adding an additional oscillator that is the sync reference.

**FM** Oscillator 1 will be modulated by a sine wave from oscillator 2 at high frequencies. There are several different pitch offsets for oscillator 2 (-12 to +48 semitones).

**AM** Uses a second oscillator to create Amplitude Modulation.

**NOISE** Adds a Noise element to the original oscillator, Osc Control sets the mix.



### FILTER SECTION

The Lead A1's filter section features classic 12 and 24 dB Low Pass, a High Pass and a Band Pass filter, together with stunning emulations of the diode and ladder filters from the legendary Mini and the TB-303 synthesizers as used in the Lead 4. The Lead A1's modeling of these filters capture the true character and response of the originals, allowing supremely flexible and precise sound design. The filters are super-smooth with a warm analog character.



### EFFECT SECTION

The Lead A1's effects section features two stunning brand new analog models of an Ensemble and Chorus, modeled on specific vintage synths and adding classic warmth and analog feel. Alongside these, choose from great-sounding Ring Modulation, Phaser, Flanger, or Drive per slot, and in addition a separate Delay and Reverb for each slot.



### LFO & MODULATION SECTION

The Lead A1 features an LFO with a choice of waveforms and a three-stage ADR/ASR Modulation Envelope. The LFO rate can be sync'd to the Lead A1's master clock. The Mod Envelope has its own velocity setting and also includes an Invert function. Thanks to the intuitive design of the front panel it is very easy to see what modulations have been applied and to design incredible sounding patches.



### SPECIAL FEATURES

#### LIKE BUTTON

Unique to the Nord Lead A1 is the new 'Like' function, a simple and brilliant practical feature to use during patch creation. When programming a patch it's often not clear if it's yet perfect. Now with the Lead A1 you can simply 'Like' what you've done into a temporary location and continue editing. You can Like up to 50 variations, with the ability to scroll between them to compare your favourites or go back to a specific Liked version to edit in a different way. When you're ready, save your favourite patch or patches to the Lead A1's memory.

#### MUTATOR FUNCTION

A popular feature of the Lead 4, the Mutator function allows variations of a patch to be created by adjusting one, some, or all elements of a patch by set percentages. There's also a wild Randomize mode to create an entirely new patch with all parameters randomized.

#### FAT UNISON MODE

A newly designed "Fat-As-Fat-Can-Be" Unison Mode let's the Lead A1 challenge any vintage analog instrument.



## ARPEGGIATOR

The Lead A1 features four separate Arpeggiators with Up/Down and Random modes and a 4-octave range. Any or all can be sync'd to the Lead A1's master clock.

## MASTER CLOCK

The Master Clock function of the Lead A1 allows the LFO, Arpeggiator and Delay to be synchronized, either internally or slaved to external MIDI clock. A Tap Tempo button allows you to easily tap to the tempo of a drummer or to playback tracks.

## SPLITS AND LAYERS

Having four identical, equally powerful synthesizers at once opens breathtaking layering possibilities. The Split-mode gives you two 2 slots on each side of the split. A flexible Hold functionality lets you latch and hold slots independently in the background while playing something else on top.

## MULTI FOCUS MODE

New in the Lead A1 is the Multi-Focus Mode that allows editing and control of all four slots simultaneously. Save this mode as part of a Performance and you have live realtime control over all four slots of the Lead A1.

## MOD WHEEL AND VELOCITY MORPH

A classic Nord feature, the Morph function via Mod Wheel, Velocity or pedal, allows you to control multiple parameters of the Lead A1 simultaneously. Morph is exceptionally easy to set-up and use - just hold the Morph button and adjust any desired knob.

## FOUR OUTPUTS

The Lead A1 features four independent audio outputs with the ability to route each slot to a different output. Plus control of Pan via the front panel knob is a welcome new addition in the Lead A1.

## SOUND MANAGER

The Lead A1 includes the Nord Sound Manager software for OS X and Windows. Sound Manager is a dedicated librarian app which allows easy reorganizing, back-up and transfer of programs.

## MIDI CONTROL

The Lead A1 features the convenience of MIDI over USB for use with a sequencer or with the included Sound Manager software. All of the Lead A1's knobs transmit MIDI Control data.

## OPTIONAL ACCESSORIES

### SOFT CASE

Keep your Nord instrument in perfect shape with the ultimate soft case, featuring a plush interior, thick padding, and the distinctive Nord red color. The mid-sized pocket will hold all your cables and accessories. Carrying handles, shoulder strap, and two backpack straps lets you carry your instrument any way you want.

### SUSTAIN PEDAL

Sustain pedal.

### DUST COVER

Cover and protect your Nord unit with the matching Dust Cover.



Sustain Pedal

Soft Case



Dust Cover



The control pedal support has been extended and now includes Yamaha FC7, Roland EV-7, Roland EV-5, Korg EXP2 and Korg XVP10.

## TECHNICAL SPECIFICATIONS

### GENERAL FEATURES

- 26 voices, 4 part multitimbral.
- 3 part effects section (FX, delay and reverb) for each part
- 49-key velocity sensitive keyboard with octave shift buttons, +/-2 octaves.
- Keyboard Split with 2 slots for the upper and lower sections.
- Modulation Wheel
- Pitch Stick with no dead zone at zero crossing (keyboard version only).
- Programmable Pitch bend range, up to +/- 4 octaves
- Separate up/down bend range: -12 or -24 semitones, + 2 semitones
- 1 pedal input for sustain.
- 1 pedal input for expression pedal.

### USER INTERFACE

- 3 LED displays, 23 knobs, 3 encoders and 20+ buttons for program and performance editing.

### OSCILLATOR SECTION

- Oscillator models of multiple waveforms (traditional analog, extended analog, pulse waveforms, real-time algorithmical waveforms with additive-, FM- and formant- synthesis)
- OSC config knob 11 categories (Pitch, Shape, Osc Sync, Noise Mix, Osc 2 Detune, Sine Mix, Tri Mix, Saw Mix, Square Mix, Freq Modulation, Amp Modulation)

### FILTER SECTION

- Multi-mode filter with 12 dB (2-pole) low pass, 24 dB (4-pole) lowpass and band pass, high pass, Ladder M and Ladder TB characteristics.
- Cut off, Resonance, envelope amount, envelope amount controlled by velocity.
- ADR/ASR envelope.
- Filter keyboard tracking can be set to off, 1/3, 2/3 or full.
- Adjustable Filter Distortion.

### MODULATION SECTION

- LFO generates a triangle, square, sawtooth, inverted sawtooth or sample and hold waveforms. LFO can be routed to Filter Frequency and Osc mod. The LFO rate can be synchronized to the Master Clock.
- LFO can be switched to polyphonic Env mode with four different characteristics and sample and hold is manually triggered by keyboard (polyphonic S/H).
- Arpeggiator: Range: 1 - 4 octave. Modes: up, down, up/down and random. The Arpeggio rate can be synchronized to the Master Clock.
- ADR/ASR envelope, velocity control on/off, inverse envelope on/off.

### AMPLIFIER SECTION

- ADR/ASR envelope, velocity control on/off, gain control.
- Individual Pan-control per program

### PERFORMANCE SECTION

- Voice modes: Poly, Legato and Mono with portamento, True Unison 1, 2 & 3.
- Four program slots for layering possibilities and multitimbrality.

### EFFECTS

- FX section with Flanger, Phaser, Ring Modulation, Chorus, Ensemble and Drive.
- Delay section with tap tempo, four stages of feedback, stereo ping-pong, dry/wet mix. The Delay speed can be synchronized to the Master Clock.
- Reverb section with five algorithms (Room, Stage 1, Stage 2, Hall 1, Hall 2).

### MEMORY

- Programs (single sounds): 8 x 50 (400) locations
- Performances (multi sounds): 4 x 50 (200) locations

### AUDIO OUT

- 4 outputs. Each slot can be assigned to its own output.
- Headphones output.
- High resolution low noise 24 bit DACs.

### MIDI FEATURES

- All control knobs and switches send control change messages.
- System exclusive bulk dumps. One program or all programs.
- Master Clock will sync to incoming MIDI clock.
- Soft Thru

### CONNECTION

- 4 Line Level Audio Outputs - 1/4", 6,35 mm jacks, unbalanced
- Stereo Headphone Output - 1/4", 6,35 mm stereo jack
- Sustain Pedal - 1/4", 6,35 mm jack. Use a momentary pedal, like e.g., Roland DP-2, DP-6, Yamaha FC-4, FC-5, Fatar VFP1-25 etc.
- Control Pedal - 1/4", 6,35 mm TRS stereo jack. Use a Yamaha FC-7, Roland EV-7, Roland EV-5, Korg EXP2 or Korg XVP10.
- USB connector with MIDI capabilities
- MIDI In & Out - 5 pin DIN connectors

### INCLUDED ACCESSORIES

- User Manual
- Power Cord with IEC C14 connector

### DIMENSIONS

- Nord Lead A1: 802 x 92 x 260 mm (31.5 x 3.6 x 10.2")

### WEIGHT

- Nord Lead A1: 4.85 kg (10.7 lbs)

*Specifications subject to change without notice.*





# nord lead 4



## A GROUNDBREAKING CLASSIC, REBORN.

When the first Nord Lead was released in 1995 it started the Virtual Analog revolution, offering a very distinctive sound combined with the tweakability otherwise reserved for vintage analog synthesizers.

The new Nord Lead 4 takes what made the Nord Lead a success and adds a whole bunch of innovative new features justifying the name - performance synthesizer.



### SOUND DEMOS

Listen to sound demos of the Nord Lead 4:  
[nordkeyboards.com/nordlead4](http://nordkeyboards.com/nordlead4)



## HIGHLIGHTS

- 2-Oscillator Subtractive synthesis, with powerful Frequency Modulation, Hard and Soft Sync and True Unison
- Wavetable synthesis, including unique Formant Wavetables
- 12/24 dB Low-pass, High-pass, Band-pass filter section plus stunning simulations of classic 18 dB and 24 dB transistor ladder filters
- 2 LFO sections and Mod Env section with flexible routing possibilities
- LFO, Arpeggiator and Delay can be synchronized to the Master Clock (or external MIDI-Clock)
- LFO and Arpeggiator Patterns
- Morph and Impulse Morph performance controls
- Crush, Talk and Distortion, Reverb, Delay
- 4 slots = 4-part multi-timbral, 4 separate outs
- 2x oversampled sound engine
- USB MIDI



Combining an advanced Virtual Analog synthesizer engine with 4 slots, the innovative Impulse Morphs & Morph performance controls and Master Clock sync, the Nord Lead 4 is a synthesizer dream come true.

## OSCILLATOR SECTION

The Nord Lead 4 is a subtractive synthesizer with 2 oscillators per voice. All the classic waveforms are present, Saw, Square, Sine, Triangle, Pulse and PWM.

The Nord Lead 4 also features Frequency (FM) controls for adding spectral complexity and occasionally, nastiness.

## TRUE UNISON

The true Voice Unison mode lets you stack up to four voices on top of each other per note (including the complete signal path of the Nord Lead 4) for really thick, wide leads and basses.

## HARD & SOFT SYNC

Hard Sync generates an irregularly shaped waveform resulting in a harsh, dirty effect rich with harmonics, first made famous by the Prophet 5. Soft Sync is a bit smoother, but by no means subtle.

## WAVETABLE SYNTHESIS

The Nord Lead 4's Oscillator 1 section features a wide selection of wavetables including a unique type called Formant Wavetables with resonant qualities that are independent of pitch. Frequency Modulating the Formant Wavetables can produce some truly magic results with distinctive acoustic qualities.



## MODULATION

### LOW FREQUENCY OSCILLATION

Nord Lead 4 features two very flexible LFO-sections per slot. A wide selection of LFO-shapes is available from sines and pulses to ramping saws perfect for creating wobbling basses or pulsing pads.

Each LFO can easily be synchronized to the Master Clock and assigned a desired time division. The LFO can be re-triggered manually with an Impulse Morph button or a key. The LFO destinations include the option to modulate the FX section.

### MODULATION ENVELOPE

Nord Lead 4 offers a very capable Modulation Envelope section with an expanded choice of modulation destinations. The Modulation Envelope can also be triggered manually with an Impulse Morph button!

## FILTER

The filter section of the Nord Lead 4 features 12/24 and 48 dB Low Pass filters plus a High Pass filter with dedicated ADSR filter envelope and selectable filter tracking.

### LADDER FILTER EMULATION

The filter section also features two stunning emulations of the transistor ladder filters from a certain legendary Mini and the 303. The emulations capture the dirty, squeaky resonance of the originals and combined with the new unison mode you'll have plenty of opportunities for making fat, squelchy basses and leads.

### DRIVE

A new overdrive that operates separately per voice can distort the waveform before it passes through the effects sections.

## MUTATOR

The Nord Lead 4 Mutator feature is an automatic program generator with adjustable style and strength that can either warp an existing program or create new totally randomized programs.



## PERFORMANCE

### IMPULSE MORPHS

The Impulse Morph buttons are extremely powerful and let you alter your sound instantaneously – brilliant for creating spontaneous, synchronized rhythmic and tonal mayhem. Doubling the LFO rate, changing the oscillator from Saw to Square, enabling Glide, cranking up the resonance and muting the Reverb - all at once - for 2 seconds in the middle of your lead solo is now as easy as 1-2-3. Doing wobbly bass lines and complex choppy pads live, in perfect sync is a breeze! Impulse Morphs is a simple, yet universal concept that offers almost limitless flexibility.

Assigning a Impulse Morph is simple – just hold down an Impulse Morph button and turn the desired knob(s) to the new value! Nearly every parameter can be controlled with an Impulse Morph and LED-lights indicate which parameters have been altered. By pressing different combinations of the 3 Impulse Morph buttons up to 7 Impulse Morphs are available.

### MORPHS

The Morph is a classic Nord feature that lets you control any “knob-type” parameters with the modulation wheel, control pedal or velocity. The possibilities are endless – like changing arpeggiator range or adjusting the Sample rate reduction with the modulation wheel.

### LAYERING

Having 4 identical, equally powerful synthesizers at once at your disposal opens breathtaking layering possibilities, both rhythmically and sonically. The Split-mode gives you two 2 slots on each side of the split. A flexible Hold functionality lets you latch and hold slots independently in the background while playing something else on top.

### PITCH STICK

The unique Pitch Stick can be used for bending notes as well as creating subtle vibrato effects, much like a guitarist or violinist as there is no dead zone in the middle position. The bend range can range from zero to 48 notes up/down and can be unique to each program.

### CHORD MEMORY

The handy Chord Memory function memorizes combination of notes so you can play a fifth or a chord with one finger, brilliant for leads and quirky themes.

### ARPEGGIATOR

The Nord Lead 4 includes a classic Arpeggiator with Up/Down and Random modes and a 4-octave range. The Arpeggiator can be synced to the LFO and Delay using the Master Clock. A new Poly mode pulses all the notes you're holding as a chord instead of cycling through the individual



notes, great for choppy chord stabs when combined with the new Patterns and Impulse Morph buttons. The Arpeggiator can be re-triggered both by the keyboard and using the Impulse Morph buttons, and with 4 slots you can have 4 arpeggios running at once!

### PATTERNS

The new Patterns feature contains a selection of simple rhythmic figures that can be assigned to the Arpeggiator or control the LFO.

### MASTER CLOCK

At the heart of the Nord Lead 4 is the Master Clock controlling the global tempo. The LFO, Arpeggiator and Delay can all be synchronized to the Master Clock. The tempo is easily changed globally with a Tap-tempo button so you can tap in to the beat of your drummer and play intricate rhythmically interlocked parts in perfect sync. The Master Clock can also be slaved to an external MIDI clock.



*The control pedal support has been extended and now includes Yamaha FC7, Roland EV-7, Roland EV-5, Korg EXP2 and Korg XVP10.*



## EFFECTS

Each of the 4 slots has its own dedicated effects section: FX and Delay/Reverb.

## DRIVE

An overdrive effect modelled after a vintage tube amp is available. Make your lead sound a little “furry” or crank it up for a truly authentic overdrive that distorts increasingly the more signal you shove through it.

## CRUSH

The Crush effect lets you reduce the sound’s sample rate radically. Give your bass line a subtle lo-fi touch or pulverize it into crackling, digital star dust.

## TALK

The Talk effect creates a voice-like talk box effect, with two different simulations of a vocal tract.

## COMB FILTER

The Comb filter effect can create chorus-like effects when controlled from an LFO or static spectral changes in your sound.

## COMPRESSOR

The compressor effect offers Threshold adjustment and can also be modulated to obtain side-chain effects and more.

## REVERB & DELAY

The Delay effect has 3 feedback levels, a Dry/Wet control and can be synchronized to the Master Clock. The Delay

has an optional analog mode that behaves like an old school delay when changing the delay rate on the fly...

A great sounding reverb effect is available when not using the Delay, with dry/wet controls, 3 reverb types and a brightness control for rolling off the treble when desired.

## USB-MIDI

With USB-MIDI, 29+ rotary knobs and 20+ buttons that all send CC-data, the Nord Lead 4 can also serve as a brilliant master keyboard for controlling soft synths.

## KEYBED

The 49 velocity sensitive synth keys are very responsive and great for quick leads, basses and percussive sounds.

## OPTIONAL ACCESSORIES

### SOFT CASE

Keep your Nord instrument in perfect shape with the ultimate soft case, featuring a plush interior, thick padding, and the distinctive Nord red color. The mid-sized pocket will hold all your cables and accessories. Carrying handles, shoulder strap, and two backpack straps lets you carry your instrument any way you want.

### SUSTAIN PEDAL

Sustain pedal.

### DUST COVER

Cover and protect your Nord unit with the matching Dust Cover.



Sustain Pedal

Soft Case



Dust Cover

## TECHNICAL SPECIFICATIONS

### POLYPHONY

- 20 voices. 4 part multi-timbral.

### SPECIAL FEATURES

- Morph: One or more continuous (knob-type) parameters can be controlled by keyboard velocity and/or the Modulation Wheel/Control Pedal.
- Impulse Morphs: Both continuous (knob-type) and button-type parameters can have alternate value settings activated by Impulse Morph buttons. 7 unique Impulse Morphs possible by pressing a combination of the 3 buttons.
- Master Clock: The LFO rates, Arpeggio rate and Delay time can be synchronized to an internal or external (via MIDI) clock, with selectable rhythmic divisions.
- Mutator: Automatic program generator with adjustable style and strength.

### PERFORMANCE CONTROLLERS

- 4 octave velocity sensitive keyboard with octave shift buttons (+/-2 octaves).
- 3 momentary Impulse Morph Buttons, 7 Impulse Morphs.
- Keyboard Split with 2 slots each for the upper and lower sections.
- Modulation Wheel.
- Pitch Stick (with no dead zone at zero crossing).
- Flexible Pitch bend range, up to +/- 4 octaves.
- 1 pedal input for sustain.
- 1 pedal input for expression pedal.

### USER INTERFACE

- 3 digit display, 29 knobs and 20+ buttons for program and performance editing.

### OSCILLATOR SECTION

- OSC 1 generating sine, triangle, sawtooth, fixed and modulateable pulse waveforms and wavetables.
- OSC 2 generating triangle, sawtooth or fixed and modulateable pulse waveforms or noise.
- OSC MOD section with Hard- and Soft sync plus Frequency Modulation of OSC 1 from OSC 2.

### FILTER SECTION

- Multi-mode filter with 12 dB (2-pole) low pass, 24 dB (4-pole) and 48 dB (6 pole) low pass, band pass, high pass, Ladder M and Ladder 303 characteristics. Cut off, Resonance, envelope amount, envelope amount controlled by velocity. ADSR envelope. Filter keyboard tracking can be set to off, 1/3, 2/3 or full. Adjustable Filter Distortion.

### AMPLIFIER SECTION

- ADSR envelope, velocity control on/off, gain control.

### MODULATION SECTION

- LFO 1 generates a square, triangle or any of 4 different types of saw- and inverted sawtooth waveforms. LFO 1 can be routed to Filter Frequency, Osc Mod, Osc Mix, Osc 2 Pitch, Amplitude and FX section. The modulation amount can be set as positive or negative/inverted. The LFO 1 rate can be synchronized to the Master Clock.
- The LFO 1 section is used to control the rate, range and directions for the arpeggiator. Arpeggiator: Range: 1 - 4 octave. Modes: up, down, up/down, random, Poly. The Arpeggio rate can be synchronized to the Master Clock.
- LFO 2 generates a square, a regular and inverted sawtooth, LF filtered noise and random staircase waveforms. LFO 2 can be routed to Filter Frequency, Osc Mod, Osc 1 and/or Osc 2 Pitch, Pan

and Pulse width. The modulation amount can be set as positive or negative/inverted. The LFO 2 rate can be synchronized to the Master Clock.

- Modulation Envelope (Attack, Decay/Release) for Osc Mix, Osc Mod, Osc 1 and/or 2 Pitch, FX section and LFO 2 amount. The modulation amount can be set as positive or negative/inverted. The Modulation Envelope can be manually triggered by the Impulse Morph buttons.
- Patterns: the cyclic waveforms of the LFOs can be replaced by a pattern behavior. There are 128 different patterns, grouped in 6 different styles.

### PERFORMANCE SECTION

- Voice modes: Poly, Legato with portamento, Mono, True Unison 1, 2 & 3.
- Four program slots for layering possibilities.

### EFFECTS

- FX section with continuous Drive/Modulation control. Crush, Drive, 2 different Talk effects, Compressor and Comb Filter.
- Selectable Delay or Reverb. Delay times at up to 1400 ms can be manually set or synchronized to the Master Clock. Reverb has three algorithms, Room, Stage and Hall with adjustable brightness.

### MEMORY

- Programs (single sounds): 4 x 99 locations.
- Performances (multi sounds): 99 locations.

### AUDIO OUT

- 4 outputs. Each slot has its own output.
- Headphones output.
- High resolution low noise 24 bit DACs.

### MIDI FEATURES

- All control knobs and switches send and receive control change messages.
- System exclusive bulk dumps. One program or all programs.
- Master Clock will sync to incoming MIDI clock.

### CONNECTIONS

- 4 Line Level Audio Outputs - ¼", 6,35 mm jacks, unbalanced.
- Stereo Headphone Output - ¼", 6,35 mm stereo jack.
- Sustain Pedal - ¼", 6,35 mm jack. Use a momentary pedal, like e.g., Roland DP-2, DP-6, Yamaha FC-4, FC-5, Fatar VFP1-25 etc.
- Control Pedal - ¼", 6,35 mm TRS stereo jack. Use a Yamaha FC-7, Roland EV-7, Roland EV-5, Korg EXP2 or Korg XVP10.
- USB connector with MIDI capabilities.
- MIDI In & Out - 5 pin DIN connectors.

### INCLUDED ACCESSORIES

- User Manual.
- Power Cord with IEC C14 connector.
- Nord CD/DVD-ROM with Nord Sound Manager.

### DIMENSIONS

- Nord Lead 4: 864 x 94 x 273 mm (34.0 x 3.7 x 10.7")

### WEIGHT

- Nord Lead 4: 5.3 kg (11.7 lbs)

*Specifications subject to change without notice.*





# nord drum 3P

modeling percussion synthesizer



## THE SYNTHESIZER DREAM DRUM

The super compact new Nord Drum 3P combines stunning playability with unlimited sound design possibilities from the innovative Nord Drum 2. New features include integrated multi-pad, Reverb and Delay effects, a simplified sound selection mode and new Sound Banks for quickly creating custom kits on the fly.



### SOUND DEMOS

Listen to sound demos of the Nord Drum 3P:  
[nordkeyboards.com/drum3p](http://nordkeyboards.com/drum3p)

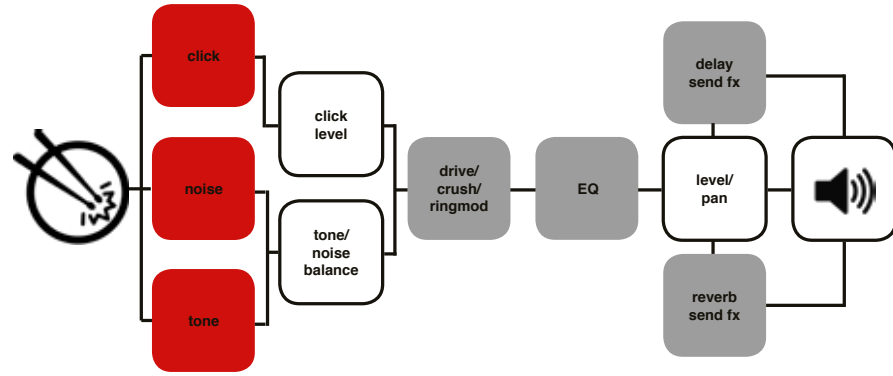


Nord Drum 3P



## HIGHLIGHTS

- Integrated super responsive multi-pad and kick input
- Reverb and Delay effects
- New “Sound Select” function for quickly creating custom kits from the preset sound library.
- Improved powerful headphone preamp
- Simplified user interface



Signal flow in the Nord Drum 3P sound engine

## SOUND CREATION

### tone section

The Tone Section is specialized for creating tonal and harmonically complex sound spectras and has four synthesis modes – Resonant synthesis, Subtractive Synthesis, Frequency Modulation and Ring Modulation synthesis.

The **Resonant synthesis** mode offers a wide range of complex spectras inspired by materials like drum heads, marimba, vibraphone, tines and cymbals. A unique feature includes the possibility to tune harmonic spectra.

The **Subtractive Wave** types include Sine, Saw, Square, Pulse waveforms and T-Bridge Oscillators and are brilliant for creating classic synth-type drum sounds and effects.

The **FM Synthesis** mode features 6 different FM algorithms where the Frequency parameter controls modulation amount and Spectra controls modulation frequency.

The **Ring Modulation** mode features 2 different types of Ring Modulation.

### Noise section

The Noise section is all about producing noise and is very powerful. Create anything from silky smooth hiss to gritty gravel to give the Tone part of the sound more texture.

The Noise can be sculpted with Low-Pass, High-Pass or Band-Pass filters with Cut-Off and Resonance controls. Once you've found the noise of your choice, it can be adjusted to respond dynamically to velocity in the same manner as with the Tone section with the Dyn Filter control.

The Decay control is just as powerful, with a choice of Linear, Exponential and Gated decay types. A Dynamic Decay mode lets you set different Decay lengths for soft and hard strokes.

Combine this with the equally powerful dynamic controls of the Tone Section and it won't take long before realizing the potential for creating complex sounds with fascinating material-like behaviors!

### Click section

The Click-section is a specialized section for an ultra-short attack to the sound. A wide range of different click types are available as well as a level control for finding the sweet spot where the Click merges with the other elements and becomes one coherent sound.

### Distortion & EQ

The Distort parameter lets you roughen up your sounds with a sample rate reducing Crush effect, non-linear distortion or with Ring Modulation. Each channel also features a dedicated EQ with Gain and sweepable Q-range.

### Delay and Reverb Effects

The great sounding global Stereo Reverb and Delay effects lets you add a whole new dimension to your drum sounds and the effect amount is easily adjusted for each drum channel.

## NEW FACTORY BANK

The new factory bank features 8 categories of great preset sounds that can be easily assigned to any of the six pads/channels - and is a great starting point in rehearsal situations when you need to find the right sounds in a matter of seconds. The categories include Kicks, Snares, Toms, Claps, Cymbals and Hi-hats Melodic, Effects, Materials, Synth

## FLEXIBLE CONNECTIVITY

The **Nord Drum 3P** with integrated super responsive multipads can also be played via MIDI in/out and features a dedicated input for 1 kick drum pad or trigger.



## TECHNICAL SPECIFICATIONS

### SOUND GENERATION

- 6-channel Percussion Modeling Synthesizer.
- Tone section - Subtractive and FM-synthesis, Resonance modeling, Ring-modulation.
- Noise section - Low Pass, High Pass and Band Pass filter. Adjustable resonance and dynamic filter response. Attack and Decay controls.
- Click section - Several click models with adjustable level.
- Global Reverb and Delay Effects with adjustable amount per channel.
- Drive/Crush distortion and EQ-effects per channel.

### CONNECTIONS

- 2 Audio Outputs ¼", 6,35 mm (unbalanced)
- Stereo Headphones Output - 1/8", 3,5 mm
- MIDI in & out - 5 pin DIN connectors
- 1 trigger input - ¼", 6,35 mm
- DC input - 12V, 250mA

### MIDI

- MIDI Note ON/OFF
- MIDI Channel Learn
- MIDI Note Learn
- MIDI Program Change
- MIDI CC parameter control

### INCLUDED ACCESSORIES

- User Manual
- Universal Mount
- Universal Power Adapter

### DIMENSIONS

- 298 x 35 x 281 mm (11.7" x 1.37 x 11.0")

### WEIGHT

- 1.90kg (4,18 lbs)

*Specifications subject to change without notice.*



# nordc2d

## THE COMPLETE ORGAN SOLUTION

With 2 sets of physical drawbars per manual, extremely realistic simulations of a B3 tone wheel organ, Vox and Farfisa transistor organs and a beautiful sampled baroque pipe organ the new Nord C2D is the ultimate portable organ solution.



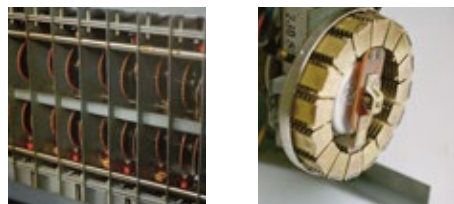
### SOUND DEMOS

Listen to sound demos of the Nord C2D:  
[nordkeyboards.com/nordc2d](http://nordkeyboards.com/nordc2d)



## HIGHLIGHTS

- B3 tone wheel organ simulation
- 122 Rotary Speaker simulation with overdrive
- Farfisa and Vox transistor organ simulations
- Sampled Baroque Pipe Organ
- Dual manual, 61 key waterfall keys
- Two sets of physical drawbars per manual
- Left hand drawbar preset panel
- 11-pin Leslie Output



Miniature images show the original vintage components.

## TONE WHEEL ORGAN

The Nord C2D B3 simulation is the result of over a decade of perfecting our tone wheel simulations, a journey that started with the original Nord Electro, followed by the award winning Nord C1 and Nord C2 Combo Organs. Not only did we analyze the signals from each of the 91 spinning tone wheels inside several original instruments, we have also paid years of attention to each and every one of the intricate details that make up the characteristics of the actual sound in a vintage organ.

Our simulation not only reacts to the panel settings but also adapts to the real time performance and will faithfully reproduce the important fold back and energy robbing characteristics; the latter produces the gentle compression effect that makes those lovely smears absolutely wonderful. There are 4 tone wheel modes available, ranging from the default vintage battered workhorse with plenty of leakage to a clean factory spec'd instrument.

## CLICK, PERCUSSION AND VIBRATO

The Nord C2D features a greatly improved simulation of the characteristic mechanical key clicks that are a crucial

component of the classic tone wheel experience and the amount can be adjusted to your taste.

The vibrato and chorus with the rotating scanner and its analog circuitry are also carefully modeled to be just as alive as the tone wheels and the Nord C2D features a redesigned percussion model that offers increased control over the percussion levels when playing near-legato.

## FULL HANDS ON CONTROL

Having two sets of drawbars per manual and the new left hand drawbar preset panel makes using drawbars actively while playing a joy. The Nord C2D 61-key waterfall keyboard offers an ultra-fast response and has a firm mechanical action to provide you with the rock solid feel of an original vintage instrument... For increased ergonomics the panel and upper manual has been tilted slightly towards the player and the panel between the manuals have a smooth surface that's easy on the hands when doing smears.

## AMP SIMULATION

The mesmerizing sound of an accelerating Rotary Speaker spreading the sound around the room is an essential component of the tone wheel organ experience. The Nord C2D features 2 different Rotary Speaker simulations, one based on a 145 unit and a brand new simulation of a vintage 122-unit. There are three modes - Stop, Slow and Fast mode that can be controlled either with the onboard panel buttons, an optional foot pedal or the Nord Half-Moon Switch (accessory). The rotary speaker overdrive simulation has also been redesigned and adds an incredibly meaty roar to your sound. Naturally, the Nord C2D can also be connected to an external rotary speaker cabinet using the 11-pin Leslie® high voltage output or the high level ¼" jack output.

In addition to the Rotary Speaker model the Nord C2D also features great Twin and JC guitar amp models with a powerful overdrive, freely assignable to the B3, Farfisa or Vox organs. Add the 3-band equalizer, a feedback-delay with tap-tempo functionality, and several types of reverberation and you truly have an all-in-one effect section with stunning sound right out of the box.

## VOX & FARFISA

The Nord C2D includes accurate models of the two most popular transistor organs of the 1960's, offering you that massive savage sound created by their 12-top oscillator frequency-divider designs. With the C2D, you get the same dynamic behavior and unique response as in the original instruments.

The Farfisa® Compact Deluxe, considered by many to be the mother of transistor organs, involves routing matrixes and complex filter combinations that offer a tailored sound with massive energy and high-end. The Vox® Continental's brute design brings you a more hollow tone, but still with a very intense character.

As with the tone wheel organ, both transistor organs have their own unique, irreplaceable personalities. Combine them with any of the Nord C2D's speaker simulations, add some distortion, adjust EQ and they will definitely light your fire.



## THE PIPE ORGAN



From the golden age of organ building we have carefully chosen a baroque organ with a devastatingly beautiful sound and wide range of expression for the C2D pipe organ part. Using cutting edge sampling technique, no efforts have been spared in producing the richest and most varied sound palette for the pipe organ player.

The Nord C2D pipe organ is built upon two basic types of organ pipes; flue pipes and reed pipes. The flue pipes have a softer timbre and the reed pipes a more nasal tone quality. For each keyboard division the player can choose from different sets of pipes and stops to produce different timbres. The C2D's setup of stops make up a well-balanced blend of tonal qualities capable of expressing the most dramatic music to conveying the subtlest of organ pieces.

### STOPS & COUPLERS

In the pipe organ each manual has its own sound; the Great division being the part of the organ with the majestic sound, whereas the Swell has a more mellow tonal quality. The Couplers are used to activate combinations of different stops from both manuals, so that pressing keys on one manual also connects stops from the other manual or pedal, making them sound as well.

### DISPOSITION

Swell (Manual II)	Great (Manual I)	Pedal	Couplers
Fugara 8	Principal 8	Subbas 16	SW/GR
Rohrflöte 8	Gamba 8	Fagot 16	SW/PED
Principal 4	Gedackt 8	Gedackt 8	GR/PED
Spitzflöte 4	Octava 4		SWELL 16
Nasat 3	Rohrflöte 4		SWELL 4
Flöte 2	Qvinta 3		SW 16/GR
Vox Celeste	Octava 2		PED/GR. LOW
Scharf II-III	Mixtur III-IV		
Oboe 8	Trumpet 8		

The disposition has the fundamental tonal character of a baroque organ. The total number of stops is 21; 9 stops for every manual and 3 pedal stops (of which one is a combined Subbas 16 and Fagot 16). In addition to the three unison couplers usually found in two manual organs, the Nord C2D features three octave couplers and a special coupler that adds the Pedal to the left most note played on the Great manual.

### SWELL PEDAL AND TREMULANT

One of the crucial ingredients for creating a vivid sound is the swell pedal. In the Nord C2D this functions exactly as in the real-life models, giving the player intimate control over volume and dynamics of the swell manual. Another indispensable aid to make the pipe organ sound even a bit more vibrant is the tremulant. This is a function that basically gives small and very rapid variations in volume, thereby causing the sound to "tremulate". The C2D provides two speeds, each with three variable depths.

### IT'S NOT ONLY ABOUT THE MUSIC, IT'S ABOUT THE PLAYER

Not only does the C2D provide an extremely well balanced set of pipes, stops and couplers, but we have kept the setup close to reality for the pipe organ player to easily find his way around. The controls are exactly where you expect to find them.



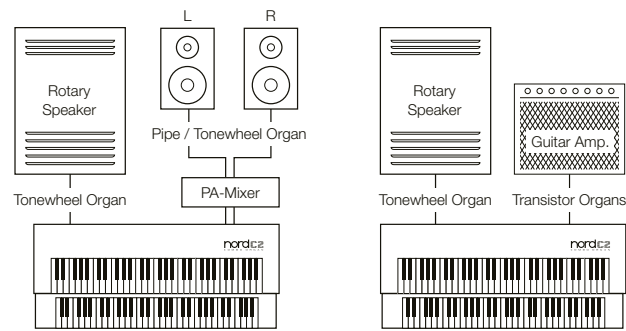
## PERFORMANCE AND CONNECTIVITY

With so many organ types at your disposal, it is vital to be able to route these to appropriate amplifier- and sound systems. The Nord C2D is equipped with a stereo output pair (L and R on 1/4" jacks) and a set of high level outputs (a 1/4" jack and a 11-pin Leslie\* connector). This provides you with the flexibility to e.g. route the tone wheel to a rotary speaker and the pipe organ to a PA.

A swell pedal is a crucial tool for expressiveness with any organ and the Nord C2D is of course capable of using any good quality expression pedal.

A dual manual organ would not be complete without the ability to play bass notes on a pedal board. The Nord C2D includes two additional bass register drawbars with selectable timbre from vintage tone wheels, pipe organ bass stops or a synth bass, modeled after a famous vintage add-on unit. The bass section can be played with any MIDI-equipped bass pedal board connected to the dedicated Bass Pedal MIDI input, or by splitting the lower manual.

MIDI connectors allow you to use the Nord C2D to control other MIDI equipment or to use it together with a computer or sequencer, and the two manuals and the optional pedal can all be set to transmit on separate MIDI channels.



Multi Channel out



### LIGHTWEIGHT

The Nord C2D is lightweight and portable, yet sturdy enough to cope with the rigors of the touring life. The total weight is merely 15 kg (33 lb).

## OPTIONAL ACCESSORIES

### KEYBOARD STAND ALU

The Nord C2D can be used with the Keyboard Stand ALU, a very sturdy but lightweight stand made of aluminum. This stand is specifically designed to make room for a large set of pedals underneath.

### MUSIC STAND EX

The strong, metal Music Stand EX attaches to mounts included on the back of your instrument, and can accommodate four sheets of music. The stand is easily mounted without the use of any tools, and can be fitted in the gig bag for transport. Dimensions: 70 x 25 cm (27.6" x 9.8").

### SOFT CASE

Having three vintage organs and a baroque pipe organ in your studio is fun, but it's even better when you can easily carry them with you to a gig. That is why the Nord C2D is lightweight and portable. With the optional soft case, you can carry the massive power of these monster organs in one hand; weighing in at merely 15.5 kg (34 lbs).

### HALF MOON SWITCH

With the Half Moon Switch you can control the speed of the built-in rotating speaker simulation as well as an external rotary speaker connected via the 11-pin Leslie\* connection. The Half Moon Switch offers 3 speed settings (slow - stop - fast) and is easily attached without the use of any tools at various locations along the left side of the lower manual.



### PEDAL KEYS 27

This MIDI pedal board has 27 keys and an integrated Swell pedal, with a sturdy chassis of aluminum. The long keys have a wooden finish and a length of 350 mms, to facilitate the use of a proper toe-heel technique when playing. Just connect it to the C2D's Bass Pedal MIDI Input and you are ready to perform. It is very portable weighing in at only 15.5 kgs, 34 lbs.(Optional accessory).



Pedal Keys 27 (optional accessory)



Music Stand EX



Half Moon Switch



Keyboard Stand ALU



Soft Case

## TECHNICAL SPECIFICATIONS

### GENERAL

- LCD Display
- Master Level Control
- 2 Drawbar sets per manual
- Pedal drawbars
- 126 Program Locations
- 2 Live Buffers

### ORGAN SECTION

- 4 Organ Models:
  - Pipe Organ
  - Classic Tone wheel Organ
  - Vox\* Continental Transistor Organ
  - Farfisa\* Compact Deluxe Transistor Organ
- Percussion Controls
- Vibrato / Chorus / Tremulant Control
- 6 Drawbar Presets per Program Location

### EFFECT SECTION

- 3-band Equalizer
- Overdrive
- 3 types of Speaker Simulations including two Rotary Speaker models (122, 122 Close and 145) with selectable speed (slow - stop - fast)
- Delay - with feedback and tap-tempo function
- Reverb - 6 algorithms

### KEYBOARD

- 2 x 61 Semi-Weighted Waterfall Keys

### CONNECTIONS

- Stereo Headphone Output
- 2 Line Level Audio Outputs
- Monitor In
- 14V RMS High Level Outputs: 11-pin Leslie\* Standard Connector Quarter Inch Connector
- Sustain Pedal Input
- Rotary Control Input
- Swell Pedal Input
- MIDI In
- MIDI Out
- Bass Pedal MIDI In
- USB - type B connector

### INCLUDED ACCESSORIES

- Dust Cover
- User Manual
- Power Cord
- Nord CD-ROM

### DIMENSIONS

- C2D: 966 x 163 x 445 mm (38.0 x 6.4 x 11)
- Pedal keys 27: 1055 x 320 x 620 mm (41.5 x 12.6 x 24.4") with the swell pedal mounted in place.

### WEIGHT

- C2D: 15.5 kg (34 lbs)
- Pedal keys 27: 15.5 kg (34 lbs)

Specifications subject to change without notice.



## GREAT SOUNDS DON'T COME CHEAP, THEY'RE FREE

We spend lots of time and tons of money to keep our two sound libraries, Nord Piano Library and Nord Sample Library constantly expanding... Then we give them away as free downloads at nordkeyboards.com



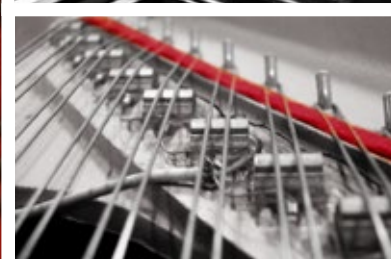
ORIGINAL SOUNDS FOR FREE

### Nord Piano Library

The Nord Piano Library is our premium library of exclusively sampled uprights, grand pianos, vintage electric pianos, harpsichords and clavichets – all carefully selected for their unique characters.

Nord's state-of-the-art sampling techniques capture the extraordinary nuances and real character of the source instruments. Our unique 'Advanced String Resonance' and Dynamic Pedal Noise deliver breathtaking realism and an unsurpassed level of expressiveness.

The Nord Piano Library is compatible with:  
Nord Electro 3, 4 and 5, Nord Piano 1/2/3 and Nord Stage Classic/EX/2/2 EX/3.



## GRAND PIANOS

### ROYAL GRAND 3D

The Royal Grand 3D is our first piano recorded using a dummy head microphone and is a premium concert piano with an elegant, natural and well-balanced tone.

### VELVET GRAND

The Velvet Grand is a large concert Grand (280 cm - 9'2") of German heritage with a remarkably rich, soft and soulful tone.

### SILVER GRAND

The Silver Grand is a medium sized concert Grand Piano with a brilliant, expressive and crystal clear timbre.

### ITALIAN GRAND

The Italian Grand is medium sized Grand Piano brimful with character. It can be described as slightly ambient, brilliant and boasts an amazing dynamic range.

### BRIGHT GRAND

Concert Grand Piano with a transparent character and an expressive dynamic range. We chose to record a factory new unit and this further adds to a crisp, rich tone.

### GRAND IMPERIAL

An Austrian giant with a powerful sound board and a high proportion of mountain spruce from the Alps. The sound of this Grand Piano is almost orchestral, with an exquisite full tone that is somewhat dark in character.

## UPRIGHTS

### BAMBINO UPRIGHT

The Bambino Upright is a charming spinet piano from the US with a warm and shimmering sound. This piano type has graced many a living room and is perfect for the Sunday coffee concert.

### MELLOW UPRIGHT

This Upright was fitted with extra soft felt hammers to accommodate a more mellow, dampened tone. With its gentle dynamic response the Mellow Upright is a unique addition to our Nord Piano Library, and a real gem if you have a preference for a calm, dreamy and rich feel.

### GRAND UPRIGHT

The Grand Upright offers a remarkably full and even sound. It has a rich, woody tone that gets a brilliant glassy bite when you lay some force into the keys.

### BLUE SWEDE UPRIGHT

The Blue Swede is a tall upright from a Swedish piano manufacturer with a reputation for building great instruments.

### QUEEN UPRIGHT

The clear, sustaining sound is typical for this upright, reflecting the selected materials and excellent finishing of the original instrument.



### GRAND LADY D

This German 9-foot beast captures the full sound from the tapered, double crowned sound board and every nuance resonating in the huge maple body.

### STUDIO GRAND 1

The recording of the Studio Grand was done with a close-up microphone positioning to provide you with a very projective character.

### STUDIO GRAND 2

The Studio Grand 2 is a meticulously prepared grand with a sonic response from the very softest pp passages to a strong FF presence.

### CONCERT GRAND 1 CLOSE

This mighty grand was captured with the microphones positioned close to the strings providing the ideal sound when you wish to add your own choice of ambience or performing live.

### CONCERT GRAND 1 AMBIENT

A grand piano with the preferred placement of the microphones, for a classical performance. The ambience is the grand piano itself interacting with the acoustics of the concert hall.

### ROMANTIC UPRIGHT

The touch and tone of the Romantic Upright are harmonized perfectly from the powerful bass notes up to the sparkling treble register.

### HONKYTONK UPRIGHT

With nails replacing the traditional felt hammers, this piano most certainly has a sound of its own.

### BLACK UPRIGHT

The hammers on the original piano are voiced for a soft tone; a characteristic for these upright pianos that the Nord Piano Library version truly reproduces in great detail.

### RAIN PIANO UPRIGHT

Upright piano manufactured by the Swedish Piano Factory, carefully tuned to sound like a typical "parlour" piano. The recording was done with a close-up microphone positioning.

### SALOON UPRIGHT

Look no further for a great, ragtime and boogie'ing personality. The Saloon Upright is heavily de-tuned, do not sit with your back towards the door..



ORIGINAL SOUNDS FOR FREE  
**Nord Piano Library**

**ELECTRIC PIANOS & CLAVINET**



**ELECTRIC GRAND CP80**

The touring and recording Electric Grand from the 80's, with a very characteristic sound. The leather hammers, short strings and the lack of a resonant body helped to produce a unique sound.

**ELECTRIC GRAND MODEL G**

This is a one of a kind custom modified Gärbstedt acoustic grand piano fitted with CP-80 pick-ups.

**ELECTRIC GRAND AMPED**

This Electric Grand was recorded through a magic mix of custom built pre-amps, tube amps and vintage outboard. Available in two sizes. A small mono version and a medium in stereo.

**EP 1 MK I DEEP, LOW DEEP**

Manufactured in May 1978 and adjusted to "deep timbre adjustment" which gives the piano a warm sound with a rich fundamental.

**EP 2 MK I SUITCASE, CLOSE**

Manufactured in January 1975. We fine-tuned the mechanics and adjusted the tines according to the "ideal" timbre adjustment.

**EP 3 MK II SHALLOW CLOSE**

Manufactured in April 1981 and adjusted to "shallow" timbre.

**EP 4 MK V CLOSE**

Manufactured in June 1984 and adjusted to "ideal" timbre. The sound of the Mark V offers improved clarity in the upper range, better consistency of tone in the low range and increased sustain.

**EP 5 MK I BRIGHT TINES**

We prepared our magnificent 1975 mk I Suitcase with a special selection of hard hammer tips in certain ranges, an adjustment of the striking line and re-voicing of the harp, in order to get "that" bell sound.

**EP 6 SPARKLETOP '67**

All the tine based electric pianos manufactured during the period of the late sixties featured wooden piano hammers (felt-covered, teardrop shape) and non-tapered Raymac tines. This combination produced the raw, bell-like sound heard on many famous recordings.

**EP 7 TINES AMPED**

This MK1 was recorded through a magic mix of custom built pre-amps, tube amps and vintage outboard.

**EP8 NEFERTITI MKI**

The Nefertiti MKI is a funky old workhorse that has spent most of its days in the darkest corners of the legendary Nefertiti jazz club in Gothenburg.

**WURLITZER 200 A**

Some say that this fat reed-sound of the Wurlitzer 200 A fits better in a pop- or guitar-oriented setting than the tine based electric pianos.

**WURLITZER AMPED**

Recorded through a custom built tube amp and some magical vintage outboard, this Wuriy has a nice crunchy bite in the top as well as rougher barky personality.

**CLAVINET**

The Clavinet includes all 4 possible pick-up selections from the original instrument.



**CHRIS MAENE COLLECTION**

**MOZART FORTEPIANO BY CHRIS MAENE**

This replica, made by Chris Maene Workshop, is identical in every detail to the original Mozart forte-piano and captures all the characteristics of the original instrument from the late 1700's.

**BROADWOOD FORTEPIANO**

Original fortepiano from 1847 with 6 octaves C-C and Grand Piano-like character.



**HARPSICHORDS**

**FRENCH HARPSICHORD**

This is a triple stringed French harpsichord, recorded in various settings at the Swedish National Radio.

**ITALIAN HARPSICHORD**

This instrument is a beautiful Italian double stringed harpsichord, recorded at the Swedish National Radio.



**SYNTH PIANOS**

**DX FULL TINES**

This FM-based Electric Piano sound was sampled from the legendary DX synthesizer. It has a brilliant, rich character and was one of the defining sounds in popular music during the 80's and 90's.

**DX RUBBA ROADS**

This FM-based Electric Piano sound was sampled from the legendary DX synthesizer, and emulates the sound of a vintage electric piano.

**4 SIZES FOR PIANOS**

No matter which size you decide to use, you will have the same great sounding and very expressive acoustic piano at your fingers.

**XL VERSIONS**

- Fully mapped keyboard
- String Resonance: pedal-down samples for entire keyboard range
- Detailed velocity mapping
- Stereo sampled

**L VERSIONS**

- String Resonance: pedal-down samples for entire keyboard range
- Detailed velocity mapping
- Stereo sampled

**M VERSIONS**

- String Resonance: pedal-down samples in the important middle region of the range
- Detailed velocity mapping
- Stereo sampled

**S VERSIONS**

- Detailed velocity mapping
- Stereo sampled



ORIGINAL SOUNDS FOR FREE

# Nord Sample Library

## ORIGINAL SOUNDS

The Nord Sample Library offer quality sampled sounds from a wide range of genres including Strings, Brass, Guitars, Accordions, Synths, Choirs and much more. The Nord Sample Library also includes the exclusively licensed original sounds from the legendary vintage tape-samplers Mellotron and Chamberlin!

New Samples are added to the Library on a regular basis and are made available as free downloads on [www.nordkeyboards.com](http://www.nordkeyboards.com).

## CATEGORIES

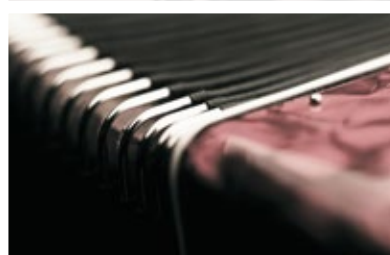
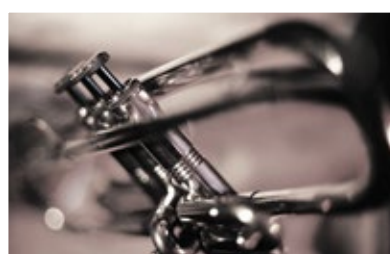
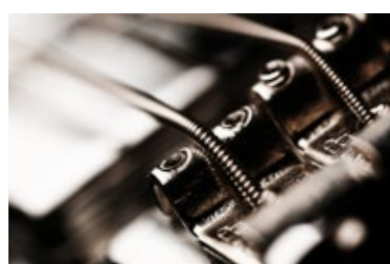
SOLO STRINGS • ENSEMBLE STRINGS • ANALOG STRINGS

SOLO WIND AND BRASS • ENSEMBLE WIND AND BRASS

ORCHESTRAL • BASS • ACCORDION HARMONIUM • TUNED PERCUSSION

GUITARS ETHNIC STRING • ORGAN • PIANOS • SYNTH • VOICE

The Nord Sample Library is compatible with:  
 Nord Electro 3, 4 and 5, Nord Piano 2/3 and Nord Stage 2/2 EX and Stage 3.



# Mellotron



# Chamberlin



## Exclusively licenced: THE MELLOTRON COLLECTION

Our Mellotron Collection contains all the famous original sounds as well as unique Master Tape versions and exclusive unreleased artist sounds from Roxy Music, Yes, Genesis and more.

The Mellotron made its mark in music history when it was used on the song "Strawberry Fields Forever" by the Beatles (Flute) and Nights in White Satin by the Moody Blues (3 Violins) in 1967.

Mellotrons were used on the road and in the studio during the 1970's by Led Zeppelin, Pink Floyd, Genesis, Yes, Deep Purple, Aerosmith, Wings, David Bowie, Kraftwerk and many others. Through the extremely successful music of these groups and artists the Mellotron sound has been widely spread, and even though most people don't know that it's a Mellotron, they've surely heard the sound.

The Mellotron experienced a renaissance during the 1990's when numerous bands and artists like Red Hot Chili Peppers, Lenny Kravitz, Oasis, Radiohead, Air, Monster Magnet, REM and Manic Street Preachers began reusing it. In the new millennium the Mellotron has already gained even more popularity and has been used on hits by Dido, Nelly Furtado, Daniel Powter, Robyn, The Black Eyed Peas and The Strokes to name a few.



## Exclusively licenced: THE CHAMBERLIN COLLECTION

The Chamberlin was the original tape replay instrument, developed and patented by US inventor Harry Chamberlin from 1949 to 1956, when the first commercially available model was introduced. Various models and versions of these extraordinary music instruments were manufactured until 1981. During the years of production the much-respected Chamberlin sound library grew, and the licensing deal with Clavia includes 60 sounds from the original Master Tapes.

The Chamberlin was a constructional beast with magnetic tapes (also used in recording studios) containing analog recorded sounds, triggered by the keyboard. One tape per key! Once reaching the tape end which was normally after about 8 seconds of playing, the sound would stop and tapes would need to mechanically rewind.

Sounds from the Chamberlin can be heard on countless songs by artists like David Bowie, The Moody Blues, Crowded House, Richard Thompson, Beck, Mitchell Froom, Tom Petty, Elvis Costello, Neil Finn, XTC and Tom Waits.







## NORD AWARD WINNING PRODUCTS



2000	MIPA	Nord Modular
2002	MIPA	Nord Lead 3
2003	MIPA	Nord Electro 2
2004	MIPA	Nord Electro 2
2005	MIPA	Nord Electro 2
2006	MIPA	Nord Stage
2007	MIPA	Nord Stage
2008	MIPA	Nord Stage
2008	MIPA	Nord C1
2009	MIPA	Nord Wave
2009	Tastenwelt	Nord Stage EX
2009	Future Music Platinum Award	Nord Wave
2010	Future Music Platinum Award	Nord C2
2011	MIPA	Nord Stage 2
2011	TEC Award	Nord Electro 3
2012	Future Music Platinum Award	Nord Stage 2
2012	Future Music Platinum Award	Nord Electro 4D
2012	Future Music Platinum Award	Nord C2D
2012	MIPA	Nord C2D
2012	Tastenwelt	Nord Stage 2
2012	MIPA	Nord Piano 2
2013	Future Music Award	Nord Electro 4
2014	Future Music Platinum Award	Nord Lead A1
2015	TEC Award	Nord Lead A1
2015	MIPA Award	Nord Electro 5
2015	Future Music Platinum Award	Nord Electro 5
2015	Keys Mag	Nord Lead A1
2016	MIPA	Nord Piano 3
2017	MIPA	Nord Piano 3
2017	Future Music Platinum Award	Nord Piano 3

## WORLD WIDE NORD DISTRIBUTORS

Visit [www.nordkeyboards.com](http://www.nordkeyboards.com) for a detailed world wide distributor list.

Disclaimer: \* Wurlitzer, Hohner, Clavinet, Farfisa and Vox are trademarks of their respective owners and are not affiliated or associated with Clavia. These trademarks are mentioned here as a reference to a sound only. Leslie is mentioned to describe a connector standard.



**Follow us!**  
#iseenord



nord<sup>®</sup>

