

# Mistbox User Guide



# TABLE OF CONTENTS

Introduction .....	1
Setup and Installation .....	2
Connecting Mistbox to Wi-Fi .....	5
Mistbox Operation .....	6
Mistbox Maintenance .....	8
Mistbox Support .....	9

## YOUR MISTBOX'S SERIAL NUMBER

You will need to refer to Mistbox's serial number when creating an account in the Mistbox app or when contacting customer service. Use the area below to fill in Mistbox's serial number for your records.

Serial #:

# INTRODUCTION

Congratulations on your purchase of Mistbox! It uses a gentle filtered mist to cool the air entering your unit, improving system efficiency and cooling capacity. This reduces your electric bills and helps make your home more comfortable.

## REQUIREMENTS

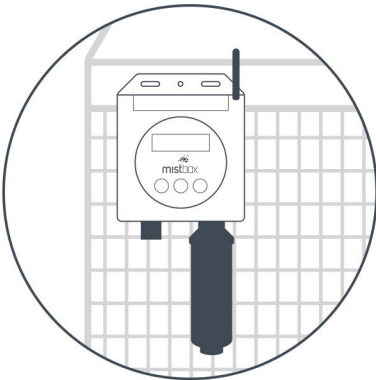
Mistbox is completely solar powered, so it is important to mount Mistbox in a location on your AC unit that receives the most sunlight. If you don't believe Mistbox will receive at least two hours of sunlight per day on average, an additional solar panel is available for purchase on our website.

The Mistbox filtration system is designed for municipal water supplies that follow FDA guidelines. If your water supply has a total dissolved solids (TDS) count over 500 PPM, it is recommended that you use a more robust water filtration system in addition to the supplied Mistbox filter.

*(Please refer to the support section of our website to find more information.)*

You will need Wi-Fi and an iOS or Android phone in order to use the Mistbox app and receive energy usage information.

## WHAT'S IN THE BOX



Control Unit with Attached Filter

Includes:

- (1) Misting Manifold
- (1) Wi-Fi Antenna
- (1) 12-Volt DC Charger
- (1) User Manual
- (1) Tax Credit Certificate
- (1) Garden Hose Adapter
- (1) Self-Tapping Screw
- (8) Clips
- (15) Zip Ties

# SETUP AND INSTALLATION

## 1. Download the Mistbox App

Before you install Mistbox on your AC unit, download the Mistbox app from the Apple App Store™ or Google Play™. You can use a smartphone or tablet for setup.



## 2. Record Your Mistbox's Serial Number

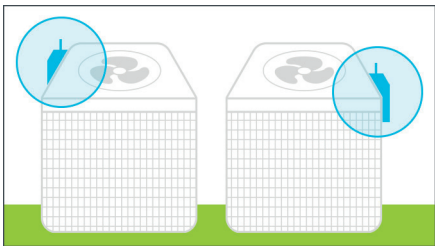
You can find your Mistbox's serial number located on the back of the control unit. Record this number in the space allocated on the inside front cover of this manual.

## 3. Choosing a Location

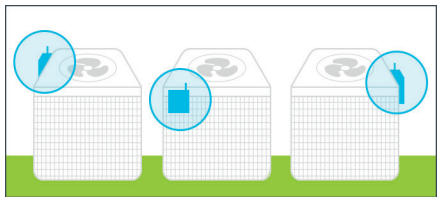
When installing a Mistbox control unit, choose the side of the AC unit that has maximum exposure to sunlight.

If installing multiple Mistbox control units on AC units in close proximity to each other, use the illustrations below to determine mounting locations.

Installing 2 Mistbox Units:

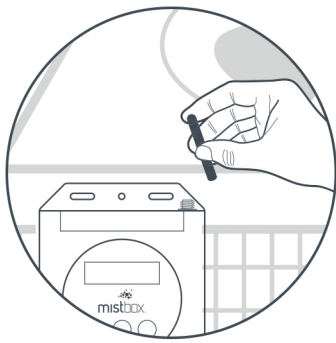
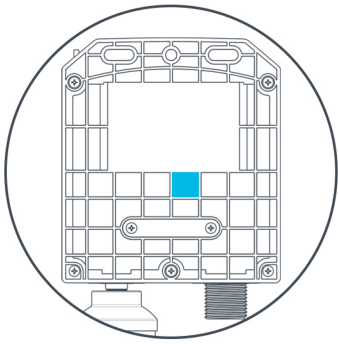


Installing 3 Mistbox Units:



# 4. Attaching Mistbox to Your AC Unit

To activate Mistbox, remove the magnet from the back of the control unit. See the illustration to the right to note placement.

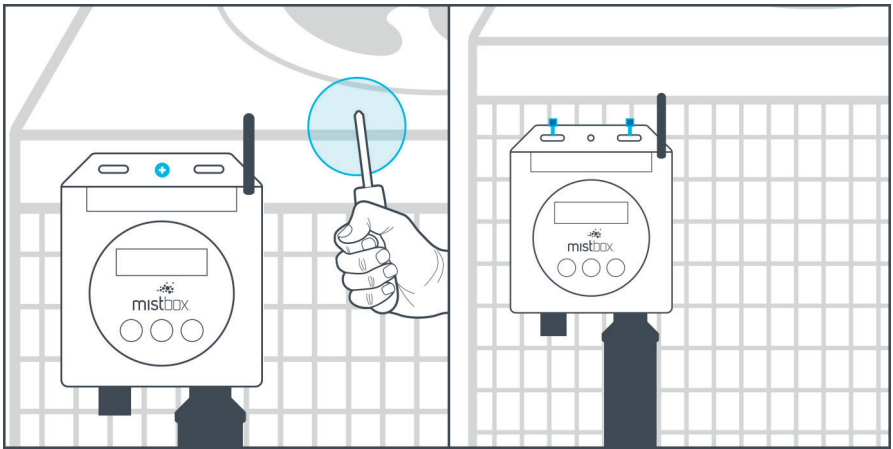


Screw the Wi-Fi antenna on the antenna jack located on the top right of the control unit.

Then attach the Mistbox control unit on your AC unit using one of the two methods below. When mounting Mistbox, the control unit should be mounted as far to the left as possible on the chosen side of the AC unit to allow room for the spray bar on that side.

Mounting Screw

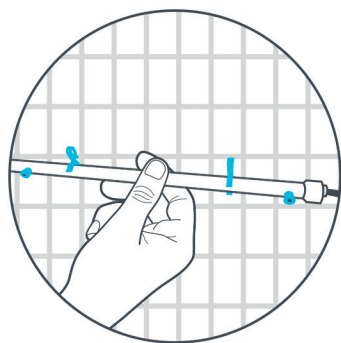
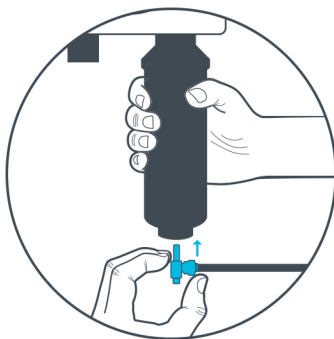
Zip Ties



**Tip:** If using the provided screw, it might be easier to back out an existing screw from your AC unit and reuse the hole.

## 5. Mounting the Mistbox Spray Bars

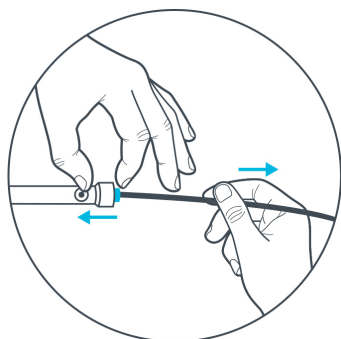
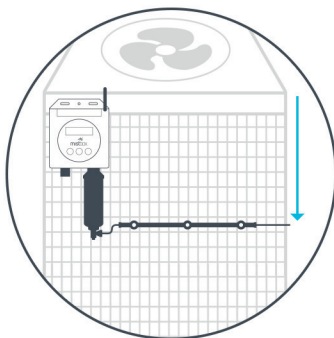
Insert the valve on the end of the spray manifold into the bottom of the Mistbox filter.



Mistbox spray bars can easily be attached using the provided clips or zip ties.

Start by mounting the spray bar closest to the Mistbox control unit. The length of the tubing that runs between each spray bar can be adjusted to fit your AC unit.

Mount the spray bars 1/3 down the side of the AC unit. Make sure the nozzles are oriented to spray away from your AC unit.



### To Extend the Tubing

Push in the collet while simultaneously pulling out the tubing. (See illustration.)


### To Retract the Tubing

Simply push the tubing into the spray bar.

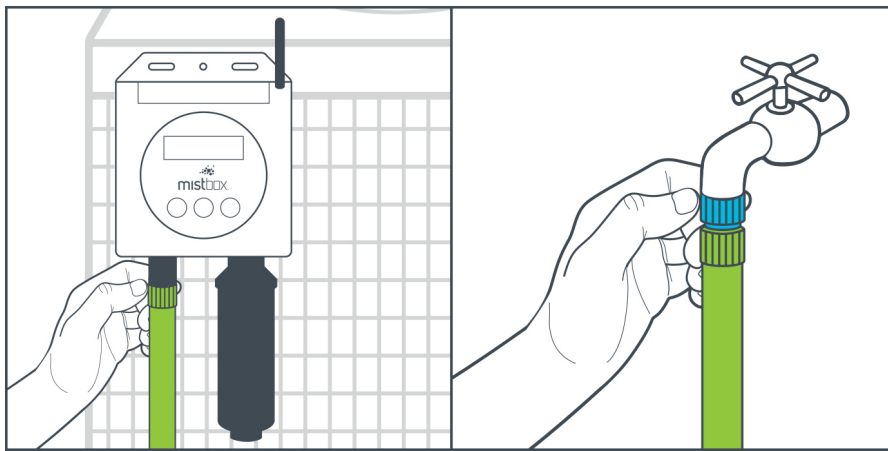
The tubing can be adjusted on the left side of each spray bar.

## 6. Connecting to Water

Attach a hose from your faucet to Mistbox.

Turn on the water to check for leaks and confirm proper operation. To run a 10 second test, hold  for 3 seconds.

**Tip:** Utilizing a splitter will allow your faucet to be used for other purposes.



## CONNECTING MISTBOX TO WI-FI

Ensure the Wi-Fi antenna has been installed on the Mistbox control unit.

To connect Mistbox to Wi-Fi, simply follow the Wi-Fi setup tutorial on the Mistbox app on your smartphone or tablet. You'll be prompted to set up Wi-Fi when creating your account in the app, but the Wi-Fi setup tutorial can also be found in the support tab.

**Note:** Mistbox will operate effectively without being connected to Wi-Fi. However, W-Fi connection is needed in order to track your savings.

## MISTBOX OPERATION

Mistbox monitors filter and battery life and will alert you with an audible beep if attention is required.

For the manual interface, Mistbox uses a simple LCD display with 3 buttons.



### Wake Button

Press this button to wake the LCD from sleep mode. This will allow you to see the current status of the system. Holding this button for 3 seconds will initiate a 10 second test.





### Filter Button

When replacing the Mistbox filter, use this button to reset the filter life. Press the button once to wake the LCD, then press it again and hold for 3 seconds. Mistbox will beep to let you know the reset is complete.



### Water Button

This button is used to enter water saver mode. Press  briefly to wake the LCD, then press again and hold for 3 seconds.  will illuminate to let you know you've successfully entered water saver mode.



# LCD DISPLAY



### Battery Life

Indicates how much battery life is remaining.



### Valve Status

Indicates if valve is open or closed.



### Wi-Fi Setup

If this icon is solid, Wi-Fi is not set up. If blinking, Mistbox is in Wi-Fi setup mode. If not present, Wi-Fi is set up correctly.



### Water Saver Mode

Indicates if Mistbox is in water saver mode.



### All Systems Go

This icon will display if Mistbox passes all internal diagnostic tests and is functioning properly.



### Problem Indicator

Mistbox automatically runs diagnostic checks to ensure proper operation. If any of these tests fail, Mistbox will shut down and this icon will display.



### Thermometer

A full thermometer indicates the temperature threshold has been met. The temperature threshold can be adjusted in the Mistbox app.



### Sound

Sound waves indicate the sound threshold has been met.



### Electro-Magnetic Field



Waves present indicate the EMF threshold has been met.



### Filter Life

Indicates how much filter life is remaining.

## WATER SAVER MODE

If you live in an area where water use is occasionally restricted, use this mode to limit water consumption. To enter this mode, press  briefly to wake the LCD, then press it again and hold for 3 seconds.  will illuminate to let you know you've successfully entered water saver mode.

## MISTBOX MAINTENANCE



### Mistbox Water Filter

The Mistbox filter must be replaced before each season. When the filter life has reached 15%, Mistbox will alert you with occasional beeps and you'll receive an alert in the Mistbox app.

When the filter life is completely depleted, Mistbox will shut down to protect your AC system from corrosion.

### Replacing the Mistbox Filter

Replacement filters will arrive to you ready to use and are easily installed.

1. Disconnect the tubing from the old filter by pushing in on the collet while simultaneously pulling the tubing out of the water check valve located at the bottom of the old filter.
2. Remove the blue cap from the new filter.
3. Remove the old filter from the Mistbox control unit and attach the new one.
4. Reconnect the tubing to the new filter's water check valve. Tubing should be pushed in at least 1/4".
5. Press  to wake the LCD display.
6. Press  and hold for 3 seconds.

Mistbox will make a beeping sound to notify you that the filter life has been successfully reset. The filter life icon should show full life.

### Occasional Inspection

We recommend you occasionally verify the system is in proper working order.

### Mistbox Spray Nozzle Cleaning

If the spray nozzles become clogged or lose spray pattern, you can clean them by soaking them overnight in a simple solution of white vinegar and clean water. Mix 1 part white vinegar to 2 parts clean water and soak the nozzles for 6-12 hours, rinse and reinstall onto the spray bars.

**Note:** If you remove any nozzles, make sure the water supply is turned off at the faucet.

## AC Condenser Cleaning

In areas with hard water (TDS > 300 PPM), a film may occur on the surfaces on or around your AC unit. While the filter prevents hard scale deposits from forming and harming the unit, customers with very hard water may notice scale precipitating out as a loose film. Due to treatment of the water by the Mistbox filter, this film can usually be washed away with a garden hose. You should also occasionally spray down your AC unit to keep it clean, as recommended by AC manufacturers.

## Winterization

While the spray bars can be left outside during winter, the Mistbox control unit should be stored in freezing conditions.

To maximize the lifespan of your battery, we highly recommend you store Mistbox on the charger during the off-season.

## MISTBOX SUPPORT



[www.mistbox.com/support](http://www.mistbox.com/support)



800.481.MIST (6478)

