

MOOSE LAKE AREA

Chamber OF Commerce

Small Town Fun!
Community Driven

2020 VISITOR'S GUIDE

AGATE CAPITAL OF THE WORLD | WWW.MOOSELAKECHAMBER.COM





Caring for you and your family.

Convenient, quality walk-in care you can trust.

Gateway Clinic walk-in care provides fast, friendly, health care in three convenient locations. Walk-in care provides for your urgent needs such as: sore throat, cough, earache, bug bites, fever, rashes and minor infections. You have access to health care from one of our board certified physicians, nurse practitioners or physician-assistants — without needing an appointment.



Moose Lake: 218.485.4491
Walk-in: M-F, 8am-5pm

Sandstone: 320.245.2250
Walk-in: M-F, 8:30am-5:30pm

Hinckley: 320.384.6618
Walk-in: M-F, 8:30am-5:00pm

www.gatewayclinic.com

WELCOME TO
MOOSE LAKE
 MINNESOTA

*A City
 For All
 Seasons*

*Scenic
 Arrowhead
 Region*

*Cross Country
 Snowmobiling
 Ice-Fishing*

*Gem, Mineral
 And Agate
 Interpretive
 Center*

*Agate Days
 July 18-19*

*Biking
 Boating
 Fishing*

*Nemadji
 State
 Forest*

*Hunting
 Hiking
 4Wheeling*

*Business
 Expo And
 Job Fair
 May 9*

*Amenities Of
 A Big City,
 Appeal Of A
 Small Town*

COPYRIGHT® 2020, ALL RIGHTS RESERVED. PRINTED IN THE U.S.A.
 The Publisher had made every effort to ensure the accuracy of the material in the Moose Lake Visitor's Guide. However, as unpredictable changes and errors do occur, the publisher can assume no responsibility or liability for errors, changes or emissions.

TABLE OF CONTENTS

A BRIEF HISTORY 4
 MODERN MOOSE LAKE 4
 RECREATION 8-9
 AREA ACTIVITES/EVENTS 10
 SERVICE DIRECTORY 12-15
 AREA MAP 16



LAND OF THE AGATES



ACKNOWLEDGEMENTS

MOOSE LAKE AREA CHAMBER OF COMMERCE
 4524 SOUTH ARROWHEAD LANE
 P.O. BOX 110 • MOOSE LAKE, MN 55767
 (800) 635-3680 • (218) 485-4145
 WEBSITE: MOOSELAKECHAMBER.COM
 E-MAIL: MOOSELAKECHAMBER@GMAIL.COM

PUBLISHED BY:
 MOOSE LAKE AREA CHAMBER OF COMMERCE

PRINTED BY:
 JS PRINT GROUP

A BRIEF HISTORY



Transportation routes were the main reason people originally settled in the Moose Lake area. The Old Indian Trail joined the Mille Lacs trail near Moose Lake. In 1856, Military Road was constructed 4 miles east of Moose Lake at the stage stop then called Elkton.

Later, with the development of railroads, more people and business made it to the area. The Northern Pacific Railroad, completed in 1870, brought settlers nearer to Moosehead Lake and Moose Lake, which was incorporated on February 15th, 1889. With the railroad, the logging industry in the area thrived, but near the turn of the 19th century a shift toward farming and recruiting more skilled people took place.

As time went by more transportation routes were built, including the first state highway in the early 1900's, and a second railroad, the Soo Line, which was completed in 1909.

One of the defining events in the history of the area is the fires that swept through northeastern MN on October 12, 1918. To memorialize the 453 people that died in the fire a 27-foot monument is erected just north of town. The Fires of 1918 are annually commemorated by the Moose Lake Area Historical Society at the Soo Line Depot on Folz Boulevard, opened as a fire and railroad museum in 1995.

The years of rebuilding after the fire saw changes in the economy with dairy farming becoming a main industry, followed by building of the state hospital in 1937, which over the years developed into a medium security prison.

Today some of those trails and tracks that originally brought settlers and visitors to the Moose Lake area are now very busy recreational trails, like the Willard Munger and Soo Line trails. With our many rivers and lakes finding activities to fill your time are easy to do and make us "A Community For All Seasons."

MODERN DAY MOOSE LAKE

The City of Moose Lake welcomes many visitors year-round looking to enjoy the nature, beauty, and adventure that abound in the area. The city, nestled on the shores of Moosehead Lake hosts many events throughout the year, including the Agate Days celebration, which is the third weekend of July each year. Moose Lake is known as the "Agate Capital" and is home to the world's largest agate, weighing in at 108 pounds. Go take a look at the agate on display at First National Bank on Elm Avenue or visit the Agate and Geological Center at Moose Lake State Park.

Moose Lake is a great stop for anyone passing through on Interstate 35, or Highways 27, 73, or the famous Old Highway 61. The city also operates as a municipality, operating its own water, sewer and power companies and is part of the Moose Lake Fire Protection District that provides fire and rescue services, including first responders who can aid in emergency calls.

With many new businesses popping up, the new Mercy Hospital, a busy Gateway Family Clinic, and a new K-12 Community school, Moose Lake is poised to welcome new families looking to move here, and provide state of the art facilities to everyone in the area.

Known as a "Community For All Seasons" the Moose Lake area welcomes you to visit any time of year and enjoy what we have to offer!



ONLY AT DQ
BLIZZARD OF THE MONTH
Upside down right
THICK

DQ FanFood
not fast food™

91 Arrowhead Lane
Moose Lake, MN
(218) 485-4317

Timber Ghost Realty

Vern C. Anderson II
REALTOR
Sturgeon Lake, MN
218-522-0301
Land • Homes • Cabins • Waterfront
sturgeonlakerealestate.com

KWIKTRIP *Open 24/7*

4694 Opportunity Dr • Moose Lake, MN

HOT FOOD Available ANY TIME

KITCHEN CRAVINGS®
Take and bake or baked to go!
THIN CRUST • TRADITIONAL SPECIALTY

ANY SIZE! \$1 MONDAYS

karuba GOLD
Americanos, Mochas, Macchiatos, Cold Brew, Lattes, & More!

plus Fresh Meat, Healthy Food, & So Much MORE!

kwiktrip.com

No Fee **ATM*** *No service fees are charged by our stores. Individual cardholder fee may still apply.



Sports Bar and Grill

Everything from Deluxe Burgers to Prime Rib

Featuring Award Winning
BBQ Platters Thursday and Sundays!

- Great Bloody Marys
- Happy Hour
- Live Music
- Trailer Parking



(218) 372-3040



34427 Majestic Pine Dr., Sturgeon Lake, MN 55783
And 6369 Kobmagergade, Askov, MN 55704

Vibrant
senior living
with the assurance of
specialized care.



 Augustana Care
Moose Lake

Assisted Living
Enhanced Assisted Living
Memory Care
Short-Term Rehab
Skilled Nursing
Long-Term Care

by  CASSIA
AN AUGUSTANA | ELIM AFFILIATION
CassiaLife.org

710 S. Kenwood Ave.
Moose Lake, MN 55767
218-351-9441



CARLTON COUNTY

Abstract & Title Company

www.carltoncoabstract.com

2 LOCATIONS TO SERVE YOU

CLOQUET

817 Cloquet Ave, Cloquet, MN 55720
(218) 879-3454 Fax (218) 879-3254

MOOSE LAKE

408 4th St, Moose Lake, MN 55767
(218) 485-8713 Fax (218) 389-9893

- ✓ CLOSINGS
- ✓ DISBURSEMENTS
- ✓ TITLE INSURANCE
- ✓ EXAMINATIONS
- ✓ ABSTRACTS

Moose Lake's
Full Service Grocery Store

MARKET *place*
FOODS

COMING SPRING 2020!

- Caribou Coffee With Drive Thru •
- Bait and Tackle Shop •
- Expanded Deli With Seating •
- Expanded Bakery, Dairy, and Produce •

HOURS: 6AM TO 10PM • CALL (218) 485-4336

70 Arrowhead Lane, Moose Lake



**Loans Given.
Dreams Realized.**



Northwoods
CREDIT UNION

Cloquet • Floodwood • Moose Lake
Serving our members since 1936

1.888.458.0975 | www.northwoodscu.org

Membership Eligibility Required. Federally insured by NCUA



THINKING OF
**BUYING OR
SELLING**
YOUR HOME?

We Offer **FREE** Local and National Advertising, and Premium Placement on the Top Searched Realty Sites! Our team of experienced Full-Time Realtors are ready to help you with your Real Estate needs!



Amy Perrine

Owner/Broker

218-522-0323 | 218-372-3767

nexthomewithamy@gmail.com

www.NextHomePAR.com

NextHome
PERRINE & ASSOCIATES
REALTY



9002 Main Street
Sturgeon Lake, MN 55783
Office: 218.372.3767

Stop in today!



EACH OFFICE IS INDEPENDENTLY OWNED AND OPERATED

RECREATION

PARKS

Art Ohlgren Recreational Area

Located on Highway 61 and Sand Lake Road, three miles south of Moose Lake, the park features two lighted tennis courts and one pickleball court, a full basketball court, softball field and covered pavilion.

Ervid T. Clemons Memorial Rest Area

Arrowhead Lane and Lakeshore Drive, this park features a 100-foot fishing pier and picnic area. It is situated where the Moosehead Lake feeds into the Moosehorn River.

Earl Ellens Park and Recreation Area

Located centrally in Moose Lake off of Highway 73, this park has plans for expansion. It currently features a large parking area with grass area and a skate board park.

Halverson Little League Field

Found behind Moose Lake Schools, Halverson Field offers a regulation softball/baseball field with team dugouts and equipment storage.

Moose Lake City Park

Set on Birch Avenue and Third Street, this park features supervised public swimming, renovated playground, picnic areas, band shell, bathrooms, changing rooms, open pavilion, boat landing and enclosed pavilion with full kitchen and party room available with reservations. For information call (218) 485-4761.

Moose Lake State Park

Located on majestic Echo Lake, this park offers a well maintained public swimming beach, picnic area, hiking and skiing trails, volleyball, camping and boat landing. On July 19, 2003, the Moose Lake Agate and Geological Interpretive Center opened its doors. State Park pass required.

Riverside Arena

This facility is equipped with artificial ice allowing for skating from October to March. The arena building houses locker rooms, a heated viewing area, concession stand and restrooms as well as abundant seating. During the summer months, this arena is converted to a multi-use community center including farmers and flea market.

Roy Peterson Memorial Park

Updated in 2012, this park is located on Folz Boulevard. As a former bowling alley, this lot made a great location for a playground and basketball court. New equipment was installed in the summer 2012 as well as a new basketball area with underlayment and beautiful retaining wall.

Town Square

Located in the center of Moose Lake's downtown area, this park's gazebo and gorgeous flowers offer a nice, shady place to sit and rest during a busy day.

Twilight Field

This is a great location and a great field. Twilight Field can be found adjacent to the Moose Lake Fire Hall on Highway 73. Proudly hosting the area youth softball/baseball, this field boasts a great concession stand, dug out areas and viewer seating.

Veterans' Memorial Park

Found at the corner of Seventh Street and Birch Avenue, Veterans' Memorial Park honors the men and women who have bravely served our country. Two benches are set to allow for a restful remembrance.



TRAILS

Willard Munger

The nation's longest paved multiple-use trail stretches 72 miles from Hinckley to Duluth. While hiking, bicycling, in-line skating or snowmobiling, you'll have many opportunities to see wildlife and enjoy our scenic rivers, streams and lakes from the many benches along the way. You'll also find plenty of opportunity for shopping, camping and picnicking along the trail. This railroad grade provided escape routes for the Moose Lake victims of the 1918 fires. You will encounter several monuments and museums along the route. In our town, a scenic loop takes you right past the Moose Lake Railroad Depot and Fires of 1918 Museum.

The Moose and Soo Line Trails are also available for year round recreation.

WATERWAYS

Fishing

That great Minnesota fish, the walleye, is found in abundance in area lakes. Whether you prefer the warm summer breeze or the cold arctic air you'll find sunfish, crappies, bass and northern pike, as well as Sturgeon during the annual run in May.

Canoeing

The many rivers that surround the area provide for some spectacular sites not seen by any other means. From Moose Lake's public canoe landing on the Moosehorn River to the various landings on the Kettle River, the quiet exploration of our wilderness is an adventure.

Boating

Recreational boating and water skiing is available on all area lakes, most of which are equipped with public landings.



Our Wurst is Best

OPEN EVERYDAY 7AM-8PM
218-389-6257 • ourwurstisbest.com

A classic General Store featuring homemade sausages, jerky and hand-cut meat. Located in the village of Mahtowa on Old Hwy. 61 in an updated 1930's building with award-winning hot bratwurst-to-go! Rediscover that small-town charm! Join us for an authentic experience through yesteryear heritage!

"Our Wurst is Best!" Since 1977

R & R

LANDSCAPING

INSURED

- Driveways
- Gravel Leveling
- Black Dirt
- Lawn/Sod Work
- Yard Cleanup
- Brush Cutting
- Retaining Walls
- Boulder Walls
- Patio
- Light Backhoe Work

Call Ron Zuk
for your complete landscaping services

STURGEON LAKE
HOME: 218-658-4467
CELL: 218-380-9062
Email: rrlandscaping@live.com



AREA ACTIVITIES/EVENTS

(BOLD TEXT INDICATES ACTIVITIES TAKE PLACE IN MOOSE LAKE)

JANUARY

- JAN. 11 **CHAMBER OF COMMERCE ANNUAL DINNER,**
FIRES OF 1918 MUSEUM & DEPOT @ 6 PM
- JAN. 25 **DESIGNER BAG BINGO,** YMCA CAMP MILLER
- JAN. 11 **MEMORIAL BLOOD CENTER BLOOD DRIVE,**
MERCY HOSPITAL

FEBRUARY

- FEB. 3 **RECYCLE, REPURPOSE, AND RESTYLE EVENT,**
MOOSE LAKE PUBLIC LIBRARY
- FEB. 8 **ICE BOCCE EVENT,**
MOOSE LAKE CITY PARK @ 10 AM
- FEB. 16 **ICE FISHING CONTEST,** 1 – 4PM
MOOSEHEAD LAKE, MOOSE LAKE BREWING CO.

MARCH

- MARCH 15 **AGATE ENCORES,**
RING OF KERRY WITH RINCE NUA IRISH DANCERS,
ML COMMUNITY SCHOOL AUDITORIUM @ 2PM

APRIL

- APRIL 11 **EASTER EGG HUNT,**
MOOSE LAKE COMMUNITY SCHOOL @ 10AM

MAY

- MAY 2 **MOOSE RUN,**
CITY PARK, MOOSE LAKE 5K/10K WALK/RUN
- MAY 9 **COMMUNITY BUSINESS EXPO,**
RIVERSIDE ARENA @9AM – 1PM
- MAY 23 **FIRES OF 1918 MUSEUM & DEPOT**
OPENS FOR THE SEASON
- MAY 27 **MEMORIAL DAY SERVICES,** MOOSE LAKE HIGH
SCHOOL @ 10 AM, AUXILIARY COFFEE
SOCIAL TO FOLLOW @ 11 AM AT THE FIRES OF
1918 MUSEUM & DEPOT

JUNE

- JUNE 5 **FIRST NATIONAL BANK OPEN HOUSE,**
@ 11 AM – 2 PM, BOTH LOCATIONS
- JUNE 6 **FIRES OF 1918 MUSEUM AND DEPOT FESTIVAL,**
MUSIC, FOOD, VENDORS, PLANT SALE
- JUNE 11-15 **"SPRING FEVER DAYS",** BARNUM
- JUNE 19 **MERCY HOSPITAL FOUNDATION GOLF**
TOURNAMENT, MOOSE LAKE GOLF COURSE, 12PM
- JUNE 20 **FLY-IN BREAKFAST,** MOOSE LAKE CARLTON CO.
AIRPORT @ 7:30AM – 11AM
- JUNE 25-27 **MOOSE LAKE PUBLIC LIBRARY BOOK SALE**
@ 9AM – 3PM THU/FRI, 9AM – 1PM SAT

JULY

4TH OF JULY ACTIVITIES

- JULY 3 **MOOSE LAKE KIDDIE PARADE,**
DOWNTOWN STARTS NEAR H&R BLOCK @ 10 AM
- JULY 4 **4TH OF JULY ACTIVITIES,**
MOOSE LAKE CITY PARK – ALL DAY
- JULY 4 **4TH OF JULY PARADE @ 10 AM**
- JULY 4 **FIREWORKS AT DUSK,** MOOSE LAKE CITY PARK
- AGATE DAYS ACTIVITIES, 18 -19**
- JULY 18 **THE FIVE SISTERS 5K,** 7AM REGISTER, 8AM RACE
- JULY 18 **ART IN THE PARK,**
MOOSE LAKE CITY PARK @ 9AM – 5PM
- JULY 18 **CLARK-OLSEN AGATE STAMPEDE,**
ELM AVENUE @ 3PM
- JULY 18 **FIREMAN'S STEAK FRY,**
MOOSE LAKE FIRE HALL @ 4PM
- JULY 18-19 **GEM & MINERAL SHOW,**
RIVERSIDE ARENA @ 9AM – 4PM
- JULY 25 **CHAMBER OF COMMERCE MOOSE TRIATHLON**
MOOSE LAKE CITY PARK
- JULY 31 **CHAMBER OF COMMERCE NINE & DINE GOLF**
OUTING, MOOSE LAKE GOLF COURSE @ 2PM

AUGUST

- AUG. 14-15 **"MA & PA KETTLE DAYS",** KETTLE RIVER
- AUG. 20-24 **CARLTON COUNTY FAIR,** BARNUM FAIRGROUNDS

SEPTEMBER

- SEPT. 12 **CHAMBER BREWFEST GAMPERS @ 5PM – 8PM**
- SEPT. 26 **OKTOBERFEST FESTIVITIES,**
RIVERSIDE ARENA – ALL DAY

OCTOBER

- OCT. 3 **MERCY FOUNDATION AUTUMN GALA**
- OCT. 10 **102ND ANNIVERSARY OF THE FIRES OF 1918**
9AM – 3PM THU/FRI, 9AM – 1PM SAT
- OCT. 22-24 **MOOSE LAKE PUBLIC LIBRARY BOOK SALE,**
MUSEUM & DEPOT
- OCT. 31 **TRUNK-OR-TREAT & SPOOK HOUSE,** CITY PARK

NOVEMBER

- NOV. 22-23 **CHRISTMAS OPEN HOUSE/CRAFT & BAKE SALE,**
FIRES OF 1918 MUSEUM & DEPOT

DECEMBER

- DEC. 5 **SANTA VISITS MOOSE LAKE,**
COMMUNITY CENTER 12PM



**THE DEPOT & FIRES OF 1918 MUSEUM
EVENT CENTER RENTALS AVAILABLE**

SUMMER HOURS

Memorial Day to Labor Day
Tuesday – Saturday 10 am – 4 pm
Sunday Noon – 4 pm

FALL HOURS

Weekends Only
Friday & Saturday 10 am – 4 pm
Sunday Noon – 4 pm

We Are Closed Mondays, Thank You!

FOR GUIDED TOURS PLEASE CALL:

(218) 485-4234

900 Folz Blvd. PO Box 235 | Moose Lake, MN 55767

Joe Jitters
COFFEEHOUSE.COM



Moose Lake, MN

308 Elm Avenue

218.485.0660



**Banning Junction
Real Estate, Inc.**

Serving Pine & Carlton Counties for 35 years!

Banning Jct Office (320) 245-2502
Northwest corner of I-35 & Exit 195

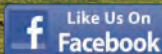
Moose Lake Office (218) 485-0229
Downtown Moose Lake, across from Marketplace

Contact us for a
FREE
Real Estate
Catalog!



Find us online at UCMinnesota.com

National Exposure. Local Expertise.®



REALTREE
UNITED COUNTRY
HUNTING PROPERTIES

Call a Realtree Land Pro today to get your
Pine County or Carlton County acreage

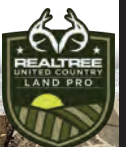
SOLD!



Tom Jensen, Land Pro
218-380-HUNT
TommyRealEstate@msn.com



Natalie Jensen, Land Pro
612-390-3945
NatalieUnitedCountry@gmail.com



SERVICE DIRECTORY

ACCOMMODATIONS

BREMEN WOODS RESORT LLC
76721 SCOTCH PINE ROAD
(218) 348-2534
WWW.BREMENWOODSRESORT.COM

FINE HOLDINGS, INC RENTALS
(612) 644 8202

LAKESHORE MANOR APARTMENTS
LAKESHORE DR MOOSE LAKE
218-878-0703 900

MOOSE LAKE LODGE AND SUITES
400 PARK PLACE DRIVE
(218) 485-8885

MOOSE LAKE STATE PARK
4252 COUNTY ROAD 137
(218) 485-5420
WWW.DNR.STATE.MN.US

NICKERSON CAMPGROUND
2154 CO. LINE RD, NICKERSON
(218) 496-0520

**OAK LAKE CAMPGROUND
AND RV SALES**
52777 HOFFMAN DRIVE
(218) 496-5678
(218) 485-9900
WWW.OAKLAKERV.COM

PATHFINDER VILLAGE-ST. CROIX
49200 STATE HWY48, HINKLEY
(320) 384-7726
WWW.PATHFINDERVILLAGE.NET

RED FOX CAMPGROUND AND RV PARK
1000 PARK PLACE
(218) 485-0341
WWW.REDFOXCAMPGROUNDANDRV.COM

SAND LAKE RESORT
94154 COUNTY HIGHWAY 61
(218) 485-8164
WWW.SANDLAKERESORT.COM

ST. CROIX RIVER RESORT
(800) 231-0425
WWW.MIDWESTOUTDOORRESORTS.COM

STURGEON LAKE MOTEL
(218) 372-3194

**SUNBAY MOBILE HOME PARK AND
CAMPGROUND**
93672 SUN BAY LANE
(218) 485-4869
WWW.SUNBAYCAMPGROUND.COM

ART, ENTERTAINMENT & CULTURE

AGATE ENCORES COMMUNITY CONCERTS
(218) 485-4882
WWW.AGATEENCORESCONCERTSERIES.ORG

ART IN THE PARK
(218) 485-4882
MLARTINTHEPARK@GMAIL.COM

COUNTY SEAT THEATER COMPANY
2035 HIGHWAY 33 SOUTH
(218) 878-0071
WWW.COUNTYSEATTHEATER.COM

LAKE THEATER
318 ELM AVE, MOOSE LAKE
(218) 485-8060
WWW.MOOSELAKETHEATER.COM

**NORTHERN PINE RIDERS
SNOWMOBILE CLUB**
(218) 372-3684
MWJ@FRONTIERNET.NET

UNCLE LUCKY
RJOKIMAKI@LIVE.COM

BUILDING & CONSTRUCTION

**A BETTER FLOORS
AND HANDMAN SERVICES**
(612) 839-9121
ABETTERFLOORSMN@GMAIL.COM

BEAVER ROOFING
4836 OHLGREN ROAD
(218) 485-8604
WWW.BEAVERROOFING.COM

BOLDT CONSTRUCTION
1001 TALL PINE LANE, CLOQUET
(218) 879-1293
WWW.THEBOLDTCOMPANY.COM

BUETOW TRUCKING & EXCAVATING LLC
4465 RED HILL ROAD
(218) 380-0135
MWBUEW@YAHOO.COM

**COUSINS CONSTRUCTION/
WAUSAU HOMES**
(218) 485-8078
WWW.COUSINSML.COM

GOBEL EXCAVATING & AGGREGATE, INC.
4189 NORTH RD, MOOSE LAKE
(218) 485-4357
WWW.GOBELXCAVATINGANDAGGREGATE.COM

IDEAL HOMES
(218) 389-3335
WWW.NEWIDEALHOMES.COM

KENT WELL DRILLING
(218) 384-9778

L&L GRANITE
(320) 216-5363
WWW.L-LGRANITE.COM

NORTHWOODS GRANITE, LLC.
(612)-770-8810
WWW.NORTHWOODSGRANITE.COM

**NORTHWOODS HYDRAULIC
& EQUIPMENT**
(218) 485-4850
WWW.NORTHWOODSEQUIP.COM

R & R LANDSCAPING BY RON ZUK
(218) 380-9062

**REGION AIR, LIGHT, POWER &
HEATING**
(218) 485-0551
WWW.REGIONCONTRACTING.COM

SMITTY'S READY-MIX
(218) 389 3276
WWW.SMITTYSCONCRETE.COM

**WILLOW RIVER LUMBER & SUPPLY,
INC. (RIBICH LUMBER)**
8147 CO HWY 61, WILLOW RIVER
(218) 372-3442

BUSINESS & PROFESSIONAL SERVICES

AGATE FINANCIAL SERVICES
20 HARTMAN DRIVE
(218) 485-5725
WWW.AGATEFINS.COM

BOLTON & MENK
2035 COUNTY RD. D EAST, SUITE B
(651) 704-9970
WWW.BOLTON-MENK.COM

**CARLTON COUNTY ABSTRACT
AND TITLE, INC**
(218) 485-8713
WWW.CARLTONCOABSTRACT.COM

**CRESENT AUCTIONEERING
BY STEVE WESELY**
(218) 485-8778

DAVIDSON INSURANCE AGENCY
309 ELM AVE, MOOSE LAKE
(218) 485-8735

EDWARD JONES INVESTMENTS
(218) 485-4497
WWW.EDWARDJONES.COM

FIRST NATIONAL BANK OF MOOSE LAKE
(218) 485-4441
WWW.FIRSTMOOSELAKE.COM

H & R BLOCK
(218) 485-4461
WWW.HRBLOCK.COM

**HANSEN HOUSE COMPANY
GREG HANSEN**
(218) 722-1161
WWW.HANSENHOUSECO.COM

JOHN M. WARP, PA, ATTORNEY AT LAW
(218) 485-4489
WARPLAW@GMAIL.COM

**MEMBER'S COOPERATIVE
CREDIT UNION**
(218) 485-4444
WWW.MEMBERSCCU.ORG

NORTHVIEW BANK
(218) 372-3155
WWW.NORTHVIEWBANK.COM

SERVICE DIRECTORY

NORTHWOODS CREDIT UNION

(218) 879-4181
WWW.NORTHWOODSSCU.ORG

RELIABLE INSURANCE AGENCY

(218) 879-4663
WWW.RELIABLEMN.COM

WOODLANDS NATIONAL BANK

(218) 372-3105
WWW.WOODLANDSNATIONALBANK.COM

EDUCATION

BARNUM PUBLIC SCHOOLS

3675 CO. RD. 140, BARNUM
(218) 389-6978

LITTLE B'S LEARNING CENTER

3690 COUNTY ROAD 140
BARNUM, MN 55707
(218) 389-9807

MOOSE LAKE COMMUNITY SCHOOL

PO BOX 489
(218) 485-4435
WWW.MOOSELAKE.K12.MN.US

OSPREY WILDS

ENVIRONMENTAL LEARNING CENTER
54165 AUDUBON DR, SANDSTONE
(320) 245-2648
WWW.OSPREYWILDS.ORG

WILLOW RIVER SCHOOL DISTRICT

(218) 347-3131
WWW.WILLOWRIVER.K12.MN.US

EMERGENCY SERVICES

GATEWAY FAMILY CLINIC

HIGHWAY 61
(218) 485-4491
WWW.GATEWAYCLINIC.COM

MERCY HOSPITAL

4572 COUNTY RD 61
(218) 485-4481
WWW.MERCYMOOSELAKE.COM

SERVPRO FIRE & WATER CLEAN-UP & RESTORATION

(218) 879-6141
WWW.SERVPROAITKINCARLTONWEST
STLOUISCOUNTIES.COM

FARM, GARDEN & PET SERVICES

ARROWHEAD LANE PET CLINIC

61 ARROWHEAD LANE, MOOSE LAKE
(218) 485-4539
WWW.ARROWHEADLANEPET.COM

FEDERATED CO-OPS INC.

PO BOX 38
(218) 273-4850
WWW.FEDERATEDCOOPS.COM

KENNELZ & BITZ

(218) 485-8233
WWW.KENNELZANDBITZ.COM

GOVERNMENT

CITY OF KETTLE RIVER

PO BOX 145 KETTLE RIVER
(218) 273-4662
WWW.CI.KETTLE-RIVER.MN.US

CITY OF MOOSE LAKE

PO BOX 870
(218) 485-4010
WWW.CITYOFMOOSELAKE.COM

HEALTH & WELLNESS

AUGUSTANA CARE MOOSE LAKE

**BY CASSIA AN AFFILIATION OF
AUGUSTANA & ELM**
710 SOUTH KENWOOD AVE, MOOSE LAKE
(218) 351-9400

CATCH AND RELEASE TUMBLE AND CHEER CLUB

461 ARROWHEAD LN, MOOSE LAKE
(218) 409-1649

LISA GAFKJEN-DOTERRA ESSENTIAL OILS & AROMATHERAPY JEWELRY

(719) 246-2582

REIKI SERVICES, CANDY ADAMCZAK

(218) 380-4923

ROTH CHIROPRACTIC

300 ELM AVE, MOOSE LAKE
(612) 916-3506
WWW.ROTHCHIROPRACTIC.NET

WHITE BEAR FOOT & ANKLE CLINIC

(651) 426-3995
WWW.WHITEBEARFOOTAND
ANKLECLINIC.COM

NON-PROFITS

BOYS AND GIRL SCOUTS

(218) 485-46454

HOLY ANGELS CHURCH - MEN'S CLUB

PO BOX 131
(218) 485-8214
WWW.HOLYANGELSML.ORG

KIWANIS CLUB OF MOOSE LAKE

(218) 485-5520
WWW.MOOSELAKEKIWANIS.ORG

LAKES & PINES COMMUNITY ACTION COUNCIL

1700 MAPLE AVE. EAST, MORA
(800) 832-6082

MERCY FOUNDATION, THE

710 SOUTH KENWOOD AVENUE
(218) 485-5586
WWW.MERCYMOOSELAKE.COM

MOOSE LAKE AREA CHAMBER OF COMMERCE

PO BOX 110
(218) 485-4145
WWW.MOOSELAKECHAMBER.COM

MOOSE LAKE AREA HISTORICAL SOCIETY/DEPOT

900 FOLZ BLVD, MOOSE LAKE
(218) 485-4234
WWW.MOOSELAKEEAHISTORY.COM

MOOSE LAKE AREA HOCKEY ASSOCIATION

PO BOX 104
(218) 485-5700
WWW.MLAHAREBELS.COM

MOOSE LAKE-WINDEMERE SANITARY SEWER DISTRICT

PO BOX 588
(218) 485-8276
MLWSSD@MCHSI.COM

UNITED WAY OF CARLTON COUNTY

PO BOX 250
(218) 879-8404
WWW.UWCARLTONCOUNTY.ORG

REAL ESTATE

EAST WEST REALTY

PO BOX 483
(218) 485-0316
WWW.EASTWESTREALTYML.COM

EDINA REALTY - HUGH GRIFFIN

1515 LONDON RD, DULUTH
(218) 214-9977

JEFF DOTSETH & ASSOCIATES REALTY, INC.

(218) 485-1117
WWW.JEFFDOTSETH.COM

MAJESTIC PINE REALTY INC.

34381 MAJESTIC PINE DR, STURGEON LAKE
(218) 372-8366

NEXT HOME, PERRINE & ASSOCIATES REALTY

9002 MAIN ST, STURGEON LAKE
(218) 522-0323
WWW.NEXTHOMEPAR.COM

UNITED COUNTRY REAL ESTATE

67 ARROWHEAD LANE, MOOSE LAKE
(218) 485-0229
WWW.UNITEDCOUNTRY.COM

RESTAURANTS, FOOD & BEVERAGE

ART'S CAFE

200 ARROWHEAD LN, MOOSE LAKE
(218) 485-4602
ARTSCAFE6@HOTMAIL.COM

CHICKADEE COFFEEHOUSE & DELI

3691 ALAN SYVERSON DR, BARNUM
(218) 389-4444
WWW.THECHICKADEECOFFEEHOUSE.COM

DAIRY QUEEN, DANBY INC.

91 ARROWHEAD LN, MOOSE LAKE
(218) 485-4317
WWW.DAIRYQUEEN.COM

DOC'S SPORTS BAR & GRILL

34427 MAJESTIC PINE DR, STURGEON LAKE
(218) 372-3040
WWW.DOCSSPORTSBARANDGRILL.COM

GAMPER'S, FOOD, LIQUOR & BOWLING

4654 CO HWY 61, MOOSE LAKE
(218) 485-8272
WWW.GAMPERSRESTAURANT.COM

SERVICE DIRECTORY

JOE JITTERS COFFEE HOUSE

308 ELM AVE, MOOSE LAKE
(218) 485-0660
WWW.JOEJITTERS.COM

LAZY BEAR GRILL

3696 MAIN ST, BARNUM
(218) 389-6991

LAZY MOOSE GRILLE AND COFFEE HOUSE

300 ARROWHEAD LN, MOOSE LAKE
(218) 485-8712

MCDONALD'S

400 PARK PLACE DRIVE
(218) 485-5785

MOOSE LAKE BREWING COMPANY

244 LAKESHORE DRIVE, MOOSE LAKE
(218) 485-4585
WWW.MOOSELAKEBREWING.COM

MOOSE LAKE MUNICIPAL LIQUOR STORE & BAR

201 ARROWHEAD LANE, MOOSE LAKE
(218) 485 8877

RUSTIC DINER

3742 FRONT STREET BARNUM
(218) 389-6084

POOR GARY'S PIZZA

401 ELM AVE, MOOSE LAKE
(218) 485-8020

SQUIRREL CAGE BAR & MOTEL

HWY 61 IN WILLOW RIVER
(218) 372-3181

SUBWAY MOOSE LAKE

(218) 485-8977
WWW.SUBWAY.COM

SWEET DREAMS BAKERY

(218) 372-3956
K_RENTZ@HOTMAIL.COM

WINKY DINKY DONUTS

PO BOX 111
(218)310-9069

RETAIL, SHOPPING & CONVENIENCE

THE CARGO SLIDE

THECARGOSLIDE@GMAIL.COM
THECARGOSLIDE.COM

CLASSIC 61 SALES, LLC

3767 FRONT ST, BARNUM
(218) 3915-9169
LOTS4BID.COM

THE FIVE SISTERS

732 NORTH ARROWHEAD LN, MOOSE LAKE
(218) 310-8036

HOLIDAY STATION STORES

PO BOX 428
(218) 485-8827
WWW.HOLIDAYSTATIONSTORES.COM

KWIK TRIP STORES

4694 OPPORTUNITY DRIVE
(218) 485-5782
WWW.KWIKTRIP.COM

LAKESIDE TRADERS

31 ARROWHEAD LN, MOOSE LAKE
(218) 485-4454

MINIT MART

1050 MN-73
(218) 485-0200
WWW.BESTOILCOMPANY.COM

MARKETPLACE FOODS

70 ARROWHEAD LANE
(218) 485-4336
WWW.MARKETPLACEFOODS.COM

MOOSE LAKE FLORISTS

310 ELM AVE, MOOSE LAKE
(218) 485-4676

TJ'S COUNTRY CORNER IN MAHTOWA

2751 MARKET ST, MAHTOWA
(218) 389-6257
WWW.OURWURSTISBEST.COM

YOUNG'S GREENHOUSE

94037 PARTRIDGE ROAD N
(218) 485-5961

SERVICES

AUGUSTANA CARE MOOSE LAKE:

OAKVIEW ASSISTED LIVING
(218) 380-3182
WWW.OAKVIEWRESIDENTIALCARE.COM

BACKGROUND REVIEW GROUP, LLC

PO BOX 386, MOOSE LAKE
(218) 485-5923
WWW.BACKGROUNDREVIEWGROUP.COM

BLUE SKY ELECTROLYSIS

(218) 355-8892
WWW.BLUESKYELECTROLYSIS.COM

C & C APIARIES

(952) 239-6687
WWW.CCAPIARIES.COM

COPPER COIN

99 ARROWHEAD LN, MOOSE LAKE
(218) 485-9970

DOWNTOWN DENTAL CARE

PO BOX 587
(218) 485-4455
WWW.DTDENTALCARE.COM

EBEL/AARDVARK SEPTIC PUMPING & PORTABLE TOILET RENTALS

4355 SOLDIER ROAD
(218) 879-0121

ESCAPE BY TRAVEL

PENNY GELLATLY
(218) 591-3058
WWW.BOOKEscapeBYTRAVEL.COM

FRIEBERG CLEANING SERVICE

4739 LINDEN ROAD
(218) 485-0449
WWW.FREIBERGCLEANING.COM

GATEWAY FAMILY HEALTH CLINIC LTD.

4570 COUNTY HIGHWAY 61
(218) 485-4491
WWW.GATEWAYCLINIC.COM

HAMLIN-HANSEN-KOSLOSKI FUNERAL HOME

PO BOX 338
(218) 485-4429
WWW.HHKFUNERALHOME.COM

HAVEN HAIR DESIGN AND SPA

516 3RD STREET, MOOSE LAKE
(218) 485-5763

IMAGE DESIGN

750 ARROWHEAD LANE
(218) 485-8770
IMDESIGN1@QWESTOFFICE.NET

LAKE AREA THERAPY SERVICES, LLC

4570 CO HWY 61, MOOSE LAKE
(218) 485-2020
LATS@FRONTIERNET.NET

LAKE COUNTRY POWER

4065 HIGHWAY 73 SOUTH
(800) 421-9959
WWW.LCP.COOP

MARY KAY CONSULTANT

ELLEN COFFEY
(612) 396-6178
WWW.MARYKAY.COM/ECOFFEY1

MEL'S CUTS

407 ELM AVENUE, MOOSE LAKE
(218) 606 2058

MINNESOTA ENERGY RESOURCES

2665 145TH STREET WEST
(651) 322-8907
WWW.MINNESOTAENERGYRESOURCES.COM

MOOSE LAKE DENTAL CARE

75 ARROWHEAD LANE, MOOSE LAKE
(218) 485-4615
MDGUNNARSON@HOTMAIL.COM

MOOSE LAKE INSURANCE AGENCY

41 ARROWHEAD LANE, MOOSE LAKE
(218) 485-4198
WWW.MOOSELAKEAGENCY.COM

NEW PERSPECTIVE-BARNUM & CLOQUET

3725 HORIZON DR, BARNUM
(218) 522-0056
WWW.NPSENIORLIVING.COM

NORDSTROM'S SANITATION SERVICE

4045 E AGATE RD, MOOSE LAKE
PO BOX 249
(218) 485-4637

SERVICE DIRECTORY

NORTHERN MN EYE CARE

312 ELM AVE, MOOSE LAKE
(218) 485-8495
WWW.NORTHERNMNEYECARE.COM

NORTHSTAR HEATING & COOLING

429 N. ARROWHEAD LANE, MOOSE LAKE
(218) 485-1367
WWW.NORTHERNMNEYECARE.COM

RAVEN & RUBY HAIR SALON

140 ARROWHEAD LANE, MOOSE LAKE
(218) 485-4233

SAFE TRANSITIONS

(218) 389-3291
WWW.SAFETRANSITIONS.ORG

SHAFFER PROFESSIONAL SERVICES

501 ARROWHEAD LN, MOOSE LAKE
(218) 380-0175
SHAFFERPROFESSIONALSERVICES.COM

STAR GAZETTE/EVERGREEN

PO BOX 449
(218) 485-4406
WWW.MLSTARGAZETTE.COM

STATE FARM INSURANCE - DENISE BURGRAFF AGENCY, INC.

341 ARROWHEAD LANE, MOOSE LAKE
(218) 485-8001
WWW.STATEFARM.COM

STOR-MOR MOBILE STORAGE INC.

4103 COUNTY ROAD 8
(218) 389-3499
WWW.STORMORINC.COM

STRAIGHTLINE SURVEYING

BEN ANDERSON
(218) 485-4811
WWW.STRAIGHTLINESURVEYING.COM

THRIFTY WHITE PHARMACY

60 ARROWHEAD LANE, MOOSE LAKE
(218) 485-2111
WWW.THRIFTYWHITE.COM

TOWN & COUNTRY INSURANCE

PO BOX 339
(320) 384-7423
WWW.TOWNANDCOUNTRY-INS.COM

VALLEY PRINTING

30 HARTMAN DRIVE
(218) 485-5736

VISION PRO OPTICAL

125 W ARROWHEAD LANE
(218) 485-8888
WWW.VISIONPRO-OPTICAL.COM

VISIONARY HOME CARE / SAFE TRANSITIONS

1501 HWY 33 S.
(218) 878-1364
WWW.VISIONARYHOMES.ORG

WIPFLI, LLP ACCOUNTANTS

807 CLOQUET AVENUE, SUITE 1
(218) 879-1503
WWW.WIPFLI.COM

TECHNOLOGY & WHOLESALE

BERNICK'S VENDING

(320) 252-6441
WWW.BERNICKS.COM

CLOSED CIRCUIT SPECIALISTS

(888) 949-2288

NEMADJI RESEARCH CORPORATION

(320) 838-3838
WWW.NEMADJIRESEARCH.COM

TOURISM & ADVENTURE

29 PINES GOLF COURSE

2871 SUNDBERG RD. MAHTOWA
(218) 389-3136

BLACK BEAR CASINO RESORT

1785 HIGHWAY 210
(888) 771-0777
WWW.BLACKBEARCASINORESORT.COM

CARLTON BIKE RENTAL AND REPAIR

505 3RD STREET, SUITE B, MOOSE LAKE
(218) 384-4696

GRAND CASINO HINCKLEY

777 LADY LUCK DRIVE
(800) 472-6321
WWW.GRANDCASINO.COM

HINCKLEY CONVENTION & VISITORS BUREAU

PO BOX 197
(320) 384-0126
WWW.HINCKLEYMN.COM

MOOSE LAKE AREA PICKLEBALL CLUB

MLAPBCLUB@GMAIL.COM
MLAPBCLUB.WIXSITE.COM/MLAPB

MOOSE LAKE GOLF CLUB

35311 PARKVIEW DR, MOOSE LAKE
(218) 485-4886
WWW.MOOSELAKEGOLFCLUB.COM

MOOSE LAKE IMPLEMENT & SPORT

504 INDUSTRIAL RD, MOOSE LAKE
(218) 485-4486
WWW.MOOSELAKEIMPLEMENT.COM

SANDSTONE AREA GOLF COURSE

343 LARK STREET, SANDSTONE
(320) 245-0471
WWW.SANDSTONEGOLF.COM

YMCA CAMP MILLER

89382 FRONTAGE ROAD STURGEON LAKE
(218) 372-3188
WWW.YMCACAMPMILLER.ORG

TRANSPORTATION & AUTOMOTIVE

ABC 1 STOP

4174 COUNTY ROAD 8, MOOSE LAKE
(218) 485-4509
WWW.ABC1STOP.COM

ALBERG AUTO

STURGEON LAKE
(218) 372-3682
WWW.ALBERGAUTO.COM

ARROWHEAD TRANSIT

1630 CO. ROAD 61
CARLTON, MN 55718
(800) 862-0175 OPT 3

AUTO VALUE OF MOOSE LAKE

540 ARROWHEAD LANE
(218) 485-4464

BARNUM AUTOMOTIVE

4144 COUNTY ROAD 6
(218) 389-3187
WWW.BARNUMAUTO.COM

COMPLETE AUTO DIAGNOSTICS AND REPAIR

581 ARROWHEAD LN
MOOSE LAKE, MN 55767
(218) 485-8270

GATEWAY TIRE & SERVICE

135 ARROWHEAD LANE, MOOSE LAKE
(218) 485-8600
WWW.JUNCTIONTIREINC.COM

GRIMM'S COLLISION

101 ARROWHEAD LANE, MOOSE LAKE
(218) 485-4500

H & P EXPRESS, INC.

(320) 838-3103

OSSIE'S INCORPORATED

3761 FRONT STREET
BARNUM, MN 55707
(218) 389-6288

TONY STEWART MOTORS

730 ARROWHEAD LANE
(218) 485-9062

OTHER

MN DEER HUNTERS ASSOCIATION QUAD RIVERS CHAPTER

(218) 380-2461
QUADRIVERS@MNDEERHUNTERS.COM

MINNESOTA DEPARTMENT OF CORRECTIONS WR/ML

1000 LAKESHORE DRIVE
(218) 485-5000
WWW.DOC.STATE.MN.US

MOOSE LAKE WATER & LIGHT

PO BOX 418
(218) 485-4100
WWW.MOOSELAKEPOWER.COM

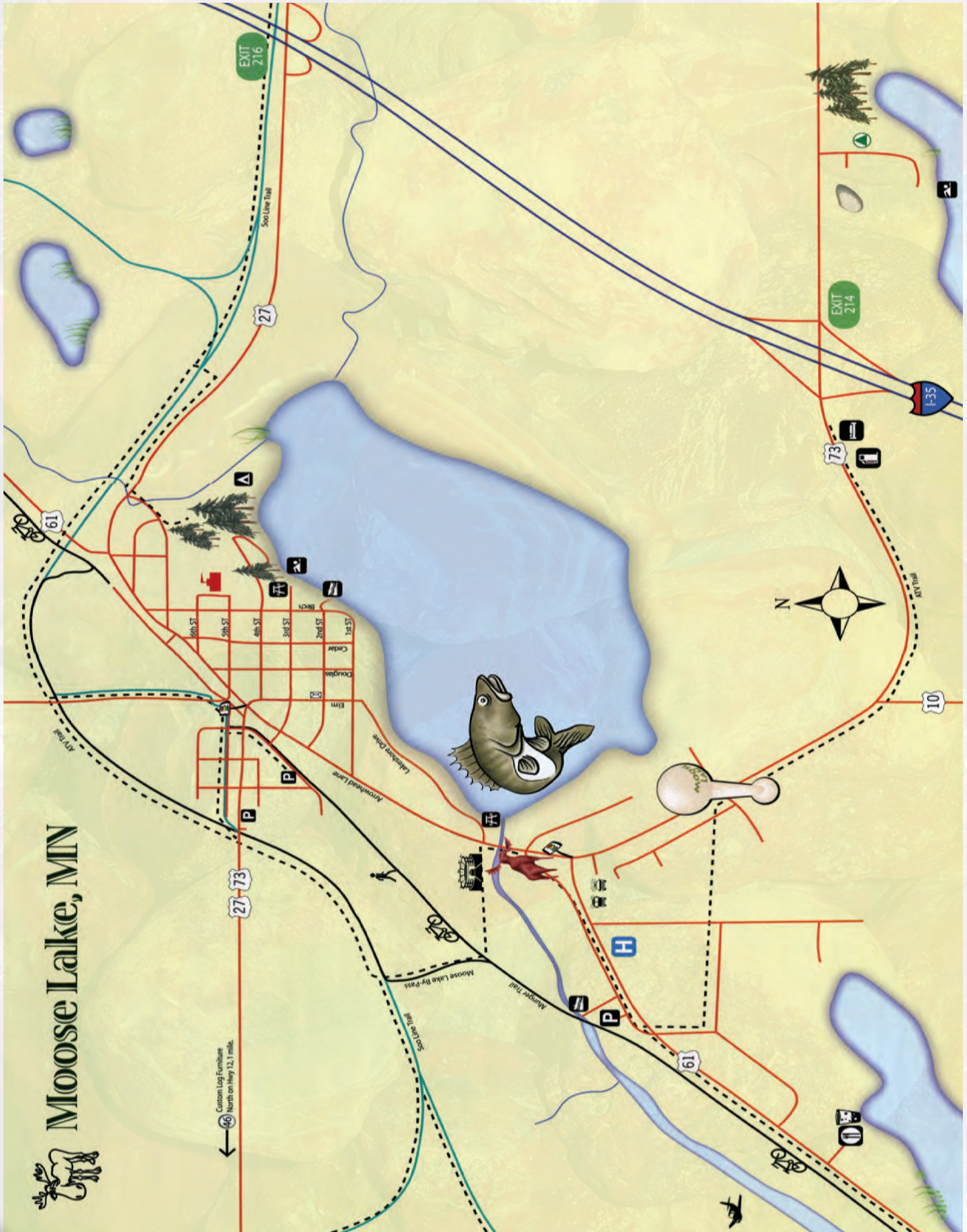
THE CARGO SLIDE

(218) 565-2019
THECARGOSLIDE.COM

WKLK/WMOZ RADIO

1104 CLOQUET AVENUE
(218) 879-4534

AREA MAP



The Chickadee

Coffeehouse & Deli

Live MUSIC 
EVERY FRIDAY

Awesome Daily Specials

**Call Ahead For
 TAKE OUT**

**Catering Services Available
 218-389-4444**



Osprey Wilds

Environmental Learning Center

formerly Audubon Center of the North Woods

- ★ Year-round meeting, lodging & dining for 160+ people
- ★ Center rentals and retreat & conference facilities
- ★ Beautiful 780-acre lakeside setting with 7 miles of trails
- ★ Programs and events for youth, families, adults

Experience Your Environment™



- Outdoor Skills
- High Ropes
- Ecology
- Wildlife
- Energy
- Archery
- Canoeing
- Climbing Wall
- Team-building
- Off-site programs



320-245-2648

info@ospreywilds.org

Located 5 miles west of Sandstone, MN on the east side of Grindstone Lake
 Check out our website for info about upcoming programs & events

www.ospreywilds.org



Moose Lake LODGE *and* SUITES

We are located just minutes from Walking, Biking
 Four Wheeling, and Snowmobile Trails.
 We offer a Pool, Whirlpool, and Sauna
 Along with our Daybreak Breakfast
 For reservations please call 218-485-8885
 Or email at mooselakelodgeandsuites@gmail.com





WINTER RENTALS:

• SEPTEMBER TO APRIL •

- Fully Furnished
- Free internet & cable
- Water, sewer & garbage included
- Lawn care & snow removal provided

SUMMER RENTALS:

• BOOK 5 NIGHTS, GET 2 FREE! •

- Grills
- Kayaks
- Paddle-boats
- Patio Terrace
- Great Fishing
- Close to trails
- Volley Ball courts
- Large beach area

CALL TODAY:
218.485.8164

SandLakeResort.com

94154 Co Hwy 61
Sturgeon Lake, MN 55783



PHYSICAL THERAPY

AT LAKE AREA THERAPY, WE PROVIDE PERSONALIZED, PATIENT CENTERED CARE TO HELP YOU MEET AND EXCEED YOUR GOALS IN PHYSICAL THERAPY.

- SPACIOUS NEW CLINIC. WITH THREE TREATMENT AREAS
- LOCATED IN FRONT SECTION OF THE GATEWAY BUILDING
- NOW OFFEREING MASSAGE THERAPY



Monday - Friday: 7:00am - 7:00pm

For appointments in Moose Lake, call: (218) 485-2020

For appointments in Cromwell, call (218) 644-0910

WWW.LATSPT.COM

NORDSTROM'S

Sanitation, LLC.

218-485-4637

nordstromsanitation.com



*Moving forward
to better serve YOU!*



Art's Cafe

Family Restaurant

218-485-4602

Right On The Trail at 200 Arrowhead Lane
Trucks & Buses Welcome • Ample Parking

*Serving Breakfast All Day • Lunch • Dinner
Daily Specials • Good Old Home Cooking*

Still serving bottomless coffee

OPEN 7 DAYS A WEEK



ABC 1 STOP



We are a full-service
Automotive
Repair Shop.

We work on most makes and models, offering the same quality service and attention to detail for every car or truck.

At ABC 1 STOP, there's nothing routine about routine maintenance.

•Customer satisfaction is our top priority!•

We offer a full range of services and maintenance to keep your car performing at its best.

Give us a call today so that we can help with any questions you may have or to set up an appointment for you to bring your vehicle in to be serviced.

We look forward to servicing your vehicle!

4174 Co Rd 8, Moose Lake Mn 55767

218-879-5591 Or 218-485-4509



GO WHERE THE WINNING IS!

What's your idea of the perfect day? Does it include your favorite games, winning meals, delicious cocktails, and exciting entertainment? Look no further than Grand Casino — **we've got it all!** The only thing you need to decide is when you'll visit.

Check out grandcasinomn.com to plan your adventure.

Let your story begin.™

GRANDCASINOMN.COM



MILLE LACS BAND OF OJIBWE
PLEASE PLAY RESPONSIBLY
MN STATE GAMBLING HELPLINE 800-333-4673



GRAND CASINO

HINCKLEY®

Small-animal veterinary clinic.
Caring for the region's pets with a full range of
professional services.



Arrowhead Lane Pet Clinic

Dr. Angela Urban
218
485-4539



CHECK US OUT & SEE WHAT WE'RE UP TO!

www.ISD91.org; [f](#) [i](#) [t](#) barnumschools; 218-389-6978



ISD 91
Barnum Public Schools

INSPIRING A LIFE LONG CELEBRATION OF LEARNING!

3675 County Road 13, Barnum, MN 55707

Penny Gellatly
218-591-3058



Escape by Travel

Discover the world, one culture at a time.

- All - Inclusive
- Escorted Tours
- Scuba Diving
- Honeymoons
- Destination Weddings
- Ocean/River Cruises



Penny@bookescapebytravel.com
www.bookescapebytravel.com

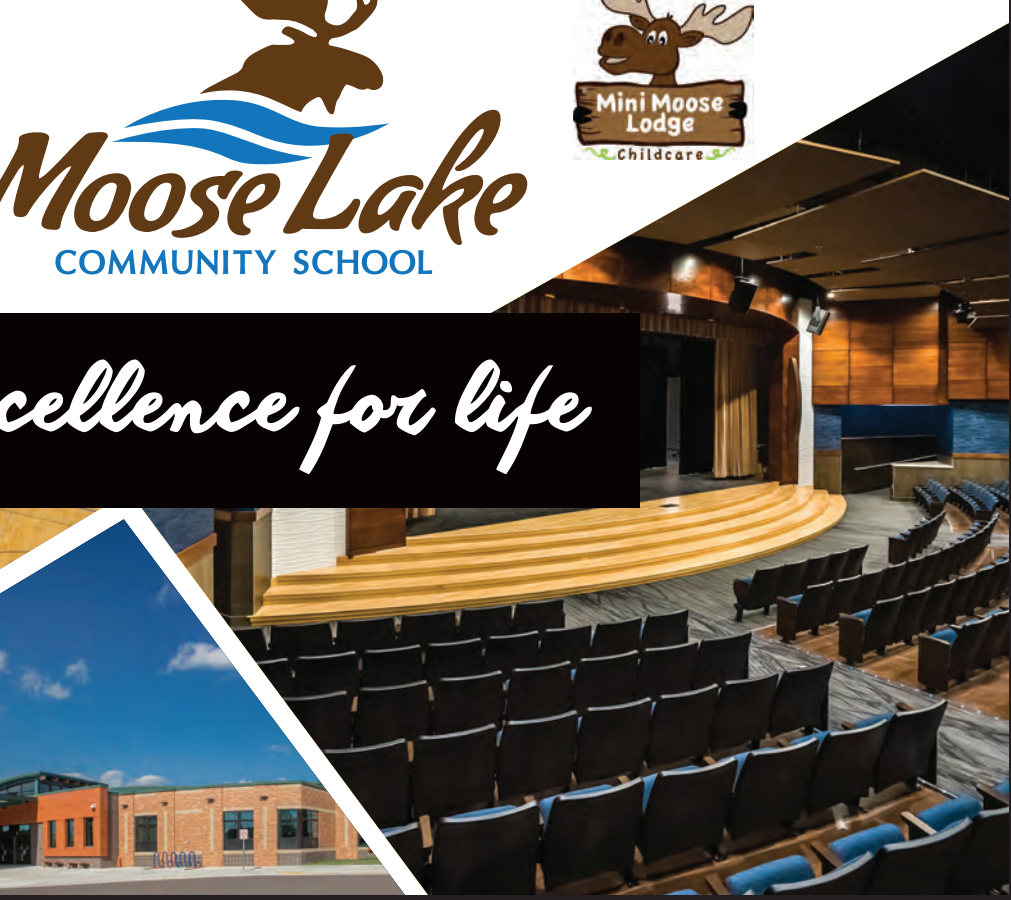
Raven & Ruby

Salon and Spa

Menu of Services

- Cuts | Color
- Foils and Dimensional Color
- Perms | Waxing
- Tanning | Airbrush Tanning
- Manicures | Pedicures
- Massage | Eyelash Extensions
- Wedding Parties

140 Arrowhead Lane | Moose Lake, MN
218-485-4233



Excellence for life

The Five Sisters



Unique Gift Shop
 732 N Arrowhead Lane, Moose Lake, MN 55767
 Store Hours: T&Th 0-4; W, F, Sat 10-5
 218-310-8036
www.thefivesisters.com
Follow us on Facebook!



Early Childhood Education

- All-day, everyday Pre-K
- ECFE classes (birth to 4)
 - 3s Are Fun classes
- Learning Through Play, Everyday!

Elementary School


- Low student/teacher ratio
- Current Technology
- School-wide Title One
- Outstanding Staff

High School


- Small classroom sizes
- Honors online courses
- College in the School classes
- Driver's Education

WORKING ON BECOMING A TOP 20 SCHOOL WHERE:


All Students Matter




We Honor the Absent



We See a Problem, And We Own The Problem



We Help Others Succeed



Willow River Area School, ISD 577
 8142 Pine St., Willow River, MN 55795
 218-372-3131 • Visit us online at www.isd577.org

TAXES | BOOKKEEPING | PAYROLL
AUDIT ASSISTANCE | TAX PLANNING
YEAR-ROUND EXPERTISE

H&R BLOCK®

Moose Lake Office
400 4th St. | Moose Lake
218-485-4461

Sandstone Office
202 Main St. | Sandstone
320-245-2943

HRBLOCK.COM

OBTP# B13696 ©2014 HRB Tax Group, Inc.

From the great
classics to jazz and
pop, experience
live professional
music locally.



The Mission of Agate Encores Community Concerts is to present professional entertainment to the greater Moose Lake community.

Visit agateencores.org for our season schedule

The advertisement for Gampers restaurant features a collage of images. On the left is the coat of arms of the state of Minnesota, showing a Native American figure holding a bow and arrow, with a star above. In the center is a clear plastic food tray filled with various condiments and toppings like ketchup, mustard, pickles, and onions. On the right is a close-up of a roasted chicken. The word "Gampers" is written in a large, stylized, white font with a red outline, slanted across the center. At the bottom right, there is contact information and social media icons for Facebook and Instagram.

Gampers

Mon-Thur: 11AM-12AM
Fri-Sat: 11AM-1AM
Sun: 11AM-12AM

4654 County Road 61
Moose Lake, MN 55767

Call Us: (218) 485-8272
Or Visit Us Online!
www.gampersrestaurant.com



Hair Services • Lashes • Spa Manicures & Pedicures • Therapeutic Massage

Welcome
to you



HAVEN

Hair Design and Spa

218-485-5763

At HAVEN we love helping people look their best and feel their best!
516 Third Street Moose Lake MN 55767 Follow us on Facebook!



Wyndtree

LAKESIDE TRADERS

HOME - GIFTS - SOUVENIRS
VINTAGE - COFFEE - ICE CREAM

31 Arrowhead Lane
Moose Lake, MN 55767
218-485-4454

Facebook: @lakesidetraders
Instagram: @wyndtreelakesidetraders

REAL FOOD
MADE FROM SCRATCH

LAZY
MOOSE
GRILLE



300 ARROWHEAD LANE
MOOSE LAKE, MN 55767
218-485-8712

Breakfast served all day!

AGATE DAYS



AGATE DAYS JULY 18-19, 2020



WHY CHOOSE TOWN & COUNTRY INSURANCE?

- We are **committed to giving back** to our communities.
- We work with over 20 top-rated carriers to find you the **best value** for your needs.
- We treat you like **friends, family and neighbors**... because you are.
- We have over **40 years of experience** & our agents stay current with continued education & licensing.
- **We work for you**, and can assist you with claims, coverages, notary services & more!



320.233.6684

TOWNANDCOUNTRY-INS.COM



We go the extra mile to finance your turf!



- Home Purchase
- New Construction
- Vacation Home
- Land



www.firstmooselake.com
PH. 218-485-4441
400 Elm Avenue
Moose Lake MN 55767



Located at 581 Arrowhead Lane, Moose Lake, MN 55767. Call now to schedule an appointment at 218-485-8270. Open 8-5 Mon-Fri

WE WELCOME WALK-INS!

Automotive Services Include

- **Tires** for purchase, balancing, rotation and mounting
- **Diagnostic equipment** to troubleshoot those difficult issues
- Servicing of **domestic** and **foreign vehicles**

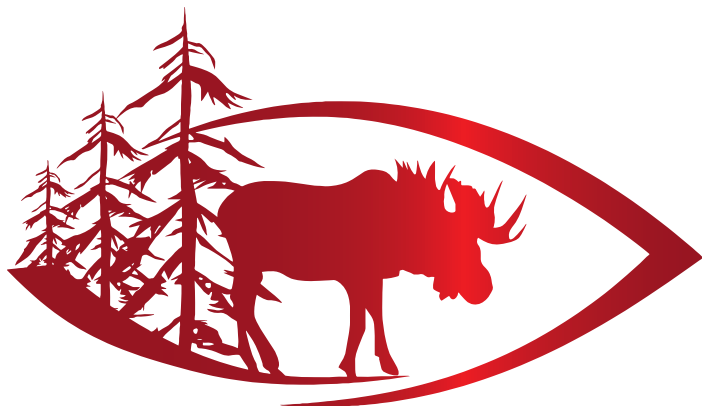
Brakes, emissions, electrical, cooling, muffler, diagnostics, preventive maintenance, oil changes and much more!



TRAIL SPONSORS



- Trails are rocky and possibly muddy. Use them at your own risk.
- If injured, dial 911 and provide your location (trail map).
- Practice tick bite protection.
- Trails are for NON-MOTORIZED USE ONLY.



**NORTHERN MINNESOTA
EYE CARE**

Doctors of Optometry
www.northernmneyecare.com

Christopher A. McDowell, O.D.
Sasha N. Narayan, O.D.
Ashley L. Hamblin, O.D.

1001 Cloquet Avenue Cloquet, MN 55720 218-879-1558
 312 Elm Avenue Moose Lake, MN 55767 218-485-8495
 45 Lady Luck Drive Hinckley, MN 55037 320-384-6361

**HOME OR AWAY we can connect you
to your home or cabin 24 HOURS A DAY!**



11 E. Hwy. 61 Esko, MN 55733
 218-628-9276 • www.northstarservices.com

**Purchase Nest items through us to
extend your warranty from 1 to 5 years!**



**Caring
for our
communities,
one person
at a time**

Emergency Services

Level IV Trauma Center
Stroke Ready Hospital

Urgent Care

Weekdays, 5 to 9 pm;
Weekends/Holidays, 9 am to 3 pm

A Baby-Friendly® Hospital

Designated 2018-2023

MERCY 
HOSPITAL

4572 County Road 61, Moose Lake
218.485.4481

mercymooselake.org 

MERCY 
WELLNESS CENTER

30 Arrowhead Lane, Moose Lake
218.485.5557

- ▶ Fitness Center
- ▶ Exercise Classes
- ▶ Membership Options
- ▶ Personal Training