

APEX

LIGHTWEIGHT • EASY TO TOW



TERA



NANO



ULTRALITE



Coachmen[®]
Recreational Vehicles

A division of Forest River, Inc.



The Apex full line of Ultralites are ideal for towing with half ton trucks and most smaller SUVs, with weights ranging from under 3000 lbs. up to 6500 lbs. All Apex floor plans are designed with rich, warm interiors, full-sized bathrooms, contemporary cabinetry, fabrics and flooring. These lightweight, durable, travel trailers are constructed with double laminated Azdel composite sidewalls, a vacuum-bonded, aluminum framed roof, an Azdel composite laminated back wall, and a laminated, insulated floor.

The 208 BHS is standard equipped with a 60" x 80" queen bed, or an optional Murphy Bed with Jack Knife sofa, shown at right.

HIT THE ROAD TO
ADVENTURE WITH
APEX'S ULTRALITE
TOWABLE RVS



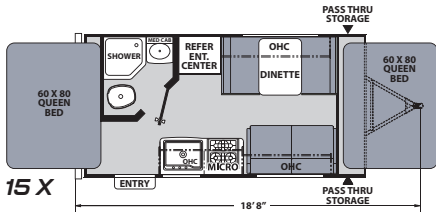
APEX
NANO



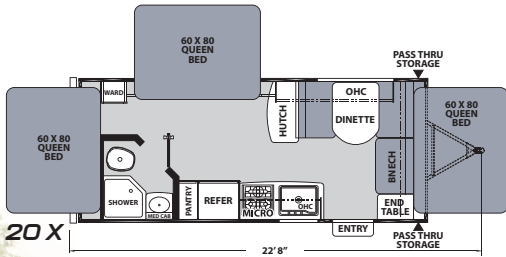
The lower double bunk in 208 BHS flips up to access a large storage area.

NANO EXPANDABLES

These expandable travel trailers offer the advantages of a hard wall camper with the fresh air sleeping of a pop-up tent camper.



15 X



20 X

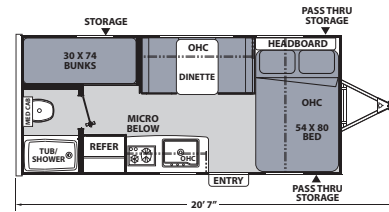
EXTENDED CAMPING
HEATED & ENCLOSED UNDERBELLY

Double axle floor plans only.

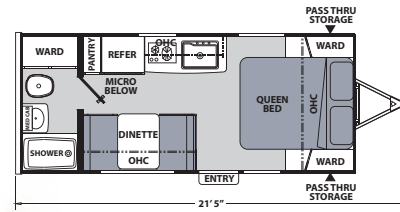
NANO TRAVEL TRAILERS

LIGHTWEIGHT EASY TO TOW

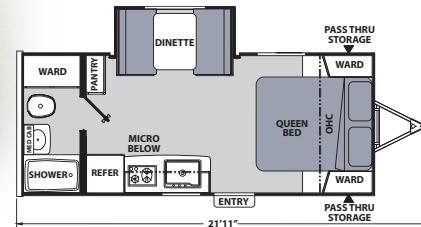
These smaller, easy to tow models deliver many of the amenities of a larger travel trailer.



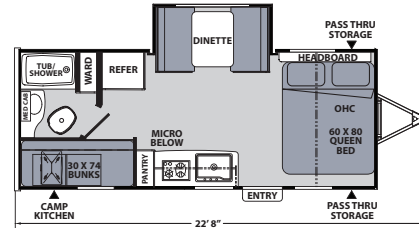
185 BH



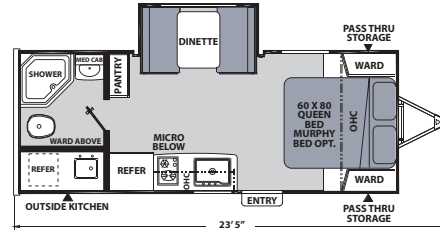
187 RB



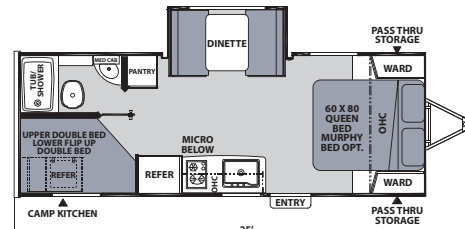
191 RBS



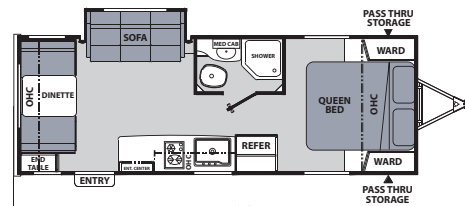
194 BHS



203 RBK



208 BHS



213 RDS

Mandatory option
Nano models only

Dual LP Tanks with Cover

- (2) 20 lb. Tanks with Cover for Longer Camping Time



12 Volt Outlets

- Pass-thru and Outside Kitchen



High Volume Power Roof Vent

- 3-Speeds
- Quiet Operation
- 9.3 CFM Air Circulation



100 Watt Solar Panel with 10 AMP Control Charger to Battery

- High Efficiency Solar Cells
- 10 AMP Solar Charge Controller



Optional 12V Tank Heater Pads Available on all Apex Nano models



Nano Expandables	15 X	20 X	Apex Nano	185 BH	187 RB	191 RBS	194 BHS	203 RBK	208 BHS	213 RDS
Hitch Weight	360	464	Hitch Weight	400	462	406	428	478	596	467
Carrying Capacity	860	1,244	Carrying Capacity	1,294	1,342	1,234	1,166	2,084	1,740	2,174
UVW	2,940	3,456	UVW	3,406	3,358	3,466	3,634	3,916	4,260	3,826
GVWR	3,800	4,700	GVWR	4,700	4,700	4,700	4,800	6,000	6,000	6,000
Ext. Length (Incl. Bumper to Hitch)	18' 8"	22' 8"	Ext. Length (Incl. Bumper to Hitch)	20' 7"	21' 5"	21' 11"	22' 8"	23' 5"	25'	25' 1"
Ext. Height (Incl. A/C)	9' 9"	10'	Ext. Height (Incl. A/C)	9' 10"	9' 9"	9' 10"	9' 10"	9' 9"	9' 9"	9' 11"
Int. Height (Coach)	77"	77"	Int. Height (Coach)	77"	77"	77"	77"	77"	77"	77"
Awning Length	12'	14'	Awning Length	12'	12'	12'	14'	15'	14'	15'
Fresh Water Capacity (gal.)	30	30	Fresh Water Capacity (gal.)	50	50	50	50	50	50	50
Grey Water Capacity (gal.)	30	30	Grey Water Capacity (gal.)	30	30	30	30	35	35	35
Waste Water Capacity (gal.)	30	30	Waste Water Capacity (gal.)	30	30	30	30	35	35	35

Refer to chart descriptions on back cover

NANO STANDARD FEATURES AND OPTIONS

Nano Package (Mandatory)

- Vacuum-bonded Laminated Azdel/Fiberglass Side Walls
- Vacuum-bonded Laminated Azdel/Fiberglass Rear Wall
- Vacuum-bonded Laminated Crowned Roof
- Laminated Aluminum Framed Floor
- Fiberglass Front Cap w/LED Lighting and Window (N/A Tera)
- Alumina-cage Construction
- Two-Tone White and Grey Fiberglass Exterior Sidewalls
- Dark Grey Exterior Rear Wall (N/A 15X, 20X)
- Front Stone Guard
- Schwintek Slide System (N/A 15X, 20X, 185BH, 187RB)
- Enclosed Underbelly w/Forced Air Heat (Double axle models) (N/A Tera)

- Spare Tire
- Slide Topper Prep
- Outside Speakers
- Stabilizer Jacks (4)
- Regulated LP Port
- DSI Gas/Electric Water Heater
- Hot/Cold Outside Shower
- Black Tank Flush
- Swing Away Assist Handle
- Friction Hinge Entrance Door
- Solid Step
- Magnetic Baggage Door Catches
- Hard Valances w/Night Shades Throughout
- LED Interior Lighting Throughout
- Microwave
- Flush-mount 2-Burner Cooktop
- 6 Cu. Ft. Gas/Electric Refrigerator
- Stainless Steel Single Bowl Sink w/Flush-mount Cover

- Access Doors Under Dinette
 - AM/FM Stereo w/Bluetooth
 - Digital TV Antenna w/Cable Hook-ups and WiFi Capability
 - Tub Surround
 - Skylight in Bath
 - Mattress
- ### Interior and Décor
- Prestige Poplar Cabinetry
 - Shaker Cabinet Door Frames
 - Stile and Rail Cabinet Front Construction
 - One-Piece Seamless Edge Countertops
 - Congoleum DiamondFlor Flooring
 - Overhead Bedroom Cabinets w/Side Wardrobes
 - Residential Comforter (Select models)
 - Hard Valances w/Night Shades Throughout
 - Pedestal Dinette Table

- Large Oversized Booth Dinette
 - LP Leak Alarm
 - Fire Extinguisher
 - Smoke Alarm
 - Carbon Monoxide Detector
- ### Electrical/Heating/AC
- Direct Vent Furnace
 - 13.5K BTU A/C
 - 55 Amp Power Center
 - Outside Receptacle GFI
 - Detachable Marine Style Power Cord
 - USB Chargers
- ### Galley
- 6 Cu. Ft. Gas/Electric Refrigerator
 - Flush-mount 2- Burner Cooktop
 - Microwave
 - Stainless Steel Single Bowl Sink w/Flush-mount Cover
 - One-Piece Seamless Edge Countertops
 - Matte Black Hardware

Bath and Water

- 6 Gal. Gas/Electric DSI Hot Water Heater
- Power Bath Vent
- Water Heater Bypass Valve
- On-demand Water Pump
- Below Floor Low Point Drains
- Foot Flush Toilet
- Tub Surround
- Hand-crafted Wood Medicine Cabinet

Exterior/Construction

- Alumina-Cage Construction
- Vacuum-bonded, Aluminum Trussed Roof w/Dicor Crossflex Roof Membrane
- Vacuum-bonded Azdel Fiberglass Sidewalls (R-9)
- Vacuum-bonded Azdel Fiberglass Rear Wall
- Laminated Aluminum Framed Floor (R-11)

- Corrosion Resistant Powder Coated Frame
- I-beam Chassis Construction
- Heated and Enclosed Underbelly w/Forced Air (Double Axle Only)
- Gutter Rail
- 20 Lb. LP Tank
- Dual Battery Tray
- Solid Step
- Tinted Safety Glass Radius Windows
- Radius Entrance Door w/Window
- Deadbolt Lock
- Radius Thumb Latch Baggage Doors
- Break Away Switch
- Dexter® E-Z Lube® Axles
- Nitrogen Filled Radial Tires
- Schwintek Slide Room System

COMFORT PACKAGE

(Mandatory)

- Direct Vent Furnace
- Power Awning w/LED Lighting
- 13.5k BTU A/C
- Spare Tire and Carrier

OFF-GRID PACKAGE

(Mandatory)

- Dual LP Tank w/Cover
- High Velocity 10" Power Roof Vent
- 100 Watt Solar Panel w/10 Amp Control Charger
- 12V Outlets (Pass-thru and Outside Kitchen)

OPTIONS

- Murphy Bed (203RBK, 208BHS Only)
- 12V Tank Heater Pads
- 15K BTU A/C Upgrade
- 15" All-Terrain Tires w/Aluminum Rims



Tera comes fully loaded with the Wilderness Package (Shown)



DESIGNED TO LEAVE THE WORLD BEHIND

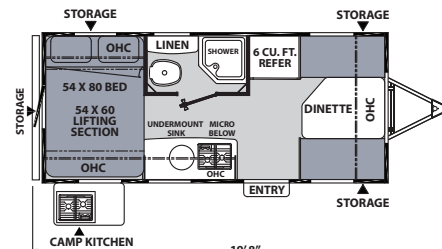
Adventure awaits in this 7' wide, easy to tow trailer with big amenities. This mighty little camper boasts the same solid construction as other Apex models, and includes a full bath with shower and toilet, a 6 cu. ft. refrigerator and a 54" x 80" bed.

TRAVEL TRAILER



TERA Wilderness Package (Mandatory)

- 15" All-Terrain Tires
- Aluminum Rims
- Front Bike Rack
- Toy Lock
- Dual LP Tanks w/Cover
- 100 Watt Solar Panel w/10 AMP Control Charger
- 13.5 BTU A/C
- 12V Heat Pads for Black, Grey and Fresh Water Tanks



16 T

Tera	16 T
Hitch Weight	330
Carrying Capacity	940
UVW	2,860
GVWR	3,800
Ext. Length (Bumper to Hitch)	19' 8"
Ext. Height (Incl. A/C)	9' 10"
Int. Height (Coach)	77"
Awning Length	12'
Fresh Water Capacity (gal.)	50
Grey Water Capacity (gal.)	35
Waste Water Capacity (gal.)	35

Refer to chart descriptions on back cover



**STYLISH, CONTEMPORARY LIVING
LOADED WITH STORAGE**



Super Bed Storage in the 211 RBS keeps gear and extras organized for easy access, creating a walk-in storage area under the queen bed.





The 211 RBS is perfect for couples who like to kick back and relax with all the amenities of home. It's open concept living at it's finest, with comfortable seating located directly across from the TV for a great view, and a free-standing table to pull up for convenience (not shown). 211 RBS is standard equipped with a Hide-A-Bed sofa, optional theater seats are shown above.



This spacious U-dinette is great for game night and comfortable breakfast dining. The hide-a-bed sofa comes standard – theater seating is an available option.

ULTRALITE STANDARD FEATURES AND OPTIONS

Value Package (Mandatory)

- Vacuum-bonded Laminated Azdel/Fiberglass Side Walls
- Vacuum-bonded Laminated Azdel/Fiberglass Rear Wall
- Vacuum-bonded Laminated Crowned Roof
- Laminated Aluminum Framed Floor
- Fiberglass Front Cap w/LED Lighting and Window
- Alumacage Construction
- Two-Tone White and Grey Fiberglass Exterior Sidewalls
- Dark Grey Exterior Rear Wall
- Front Stone Guard
- Enclosed Underbelly w/Forced Air Heat
- Aluminum Wheels
- Spare Tire
- Slide Topper Prep
- Back-up Camera Mount
- Power Tongue Jack
- Outside Speakers
- Stabilizer Jacks (4)
- Regulated LP Port
- 100 Watt Solar Panel w/10 AMP Control Charger

- 14.5 BTU A/C (13.5 BTU A/C – 215 RBK, 245 BHS)
- Ducted/Direct Vent Furnace (Floor Plan Specific)
- DSI Gas/Electric Water Heater
- Hot/Cold Outside Shower
- Black Tank Flush Kit
- Power Awning w/Lighting
- Swing Away Assist Handle
- Friction Hinge Entrance Door
- Solid Step
- Slam Latch Baggage Door Catches
- LED Motion Sensor Light in Exterior Storage Area
- Hard Valances w/Night Shades Throughout
- LED Interior Lighting Throughout
- Microwave
- Lighted, Flush-mount, 3-Burner High Output Range w/Oven
- 8 Cu. Ft. 12V Refrigerator (N/A 215 RBK, 245 BHS, 293 RLDS)
- Stainless Steel Single Bowl Sink w/Flush-mount Cover
- Access Doors Under Dinette (Some models)
- Interior Convenience Center

- AM/FM Stereo w/Bluetooth
- Digital TV Antenna w/Cable Hook-ups and WiFi Capability
- USB Charging Station
- LED TV
- Hide-A-Bed Sofa (Deep slides only)
- Tub Surround
- Skylight in Bath
- Mattress

Interior and Décor

- Prestige Poplar Cabinetry
- Shaker Cabinet Door Frames
- Stile and Rail Cabinet Front Construction
- One-Piece Seamless Edge Countertops
- Congoleum DiamondFlor Flooring
- Overhead Bedroom Cabinets w/Side Wardrobes
- Residential Comforter
- Hard Valances w/Night Shades Throughout
- Pedestal Dinette Table
- Large Oversized Booth or U-shaped Dinette w/Sliding Door Storage Access
- 68" Residential Sofa (Most models)

- 32" LED TV (40" – 256 BHS, 265 RBSS, 284 BHSS, 290 BHS, 293 RLDS)
- LP Leak Alarm
- Fire Extinguisher
- Smoke Alarm
- Carbon Monoxide Detector

Electrical/Heating/A/C

- Furnace – Forced Air/Ducts Per Floorplan
- 14.5K BTU Ducted A/C (8' Wides)
- 55 Amp Power Center
- Outside Receptacle GFI
- 100 Watt Solar Panel w/10 AMP Control Charger
- Detachable Marine Style Power Cord
- USB Chargers

Galley

- 8 Cu. Ft. 12V Refrigerator (N/A 215 RBK, 245 BHS, 293 RLDS)
- Flush-mount 3-Burner Stovetop w/Oven
- Power LED Lighted Range Hood
- Microwave
- Stainless Steel Single Bowl Sink w/Flush-mount Cover
- One-Piece Seamless Edge Countertops

Bath and Water

- 6 Gal. Gas/Electric DSI Hot Water Heater
- Power Bath Vent
- Water Heater Bypass Valve
- On-Demand Water Pump
- Below Floor Low Point Drains
- Foot Flush Toilet
- Tub Surround
- Glass Shower Door – 34" Neo-angle Showers
- Hand-crafted Wood Medicine Cabinet

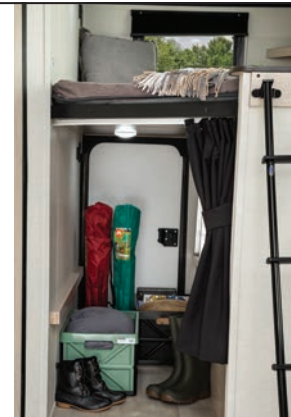
Exterior/Construction

- Alumacage Construction
- Vacuum-bonded, Aluminum Trussed Roof w/Dicor Crossflex Roof Membrane (R-11 – 7½" wide, R-14 – 8" wide)
- Vacuum-bonded Azdel Fiberglass Sidewalls (R-9)
- Vacuum-bonded Azdel Fiberglass Rear Wall
- Laminated Aluminum Framed Floor (R-11)
- Corrosion Resistant Powder Coated Frame
- I-beam Chassis Construction

- Heated and Enclosed Underbelly w/Forced Air
- Gutter Rail
- Dual 20 Lb. LP Tanks w/Cover
- Dual Battery Tray
- Solid Step
- Tinted Safety Glass Radius Windows
- Radius Entrance Door w/Window
- Dead Bolt Lock
- Radius Slam Latch Baggage Doors
- Break Away Switch
- Dexter® E-Z Lube® Axles
- Nitrogen Filled Radial Tires
- Schwintek/Rack and Pinon Slide Room System (per floor plan)

OPTIONS

- Frameless Dark Tint Windows
- 15K BTU A/C Upgrade (215 RBK, 245 BHS only)
- 50 Amp Service w/Second (Forced) 14.5K BTU A/C
- 6 Cu. Ft. Gas/Electric Refrigerator
- Theater Seating
- Recliners (2)



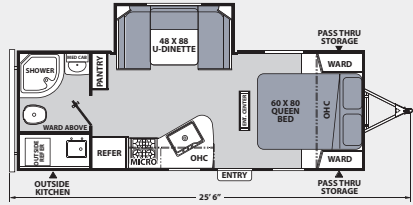
Flip-up double bunk provides easy access to the rear wall storage door.



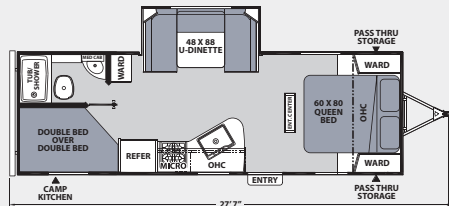
Private bedroom models offer plenty of storage, and are prepped for a TV.

Apex Ultralites are ideal for towing with half ton trucks and most smaller SUVs. Weights range from just over 4000 lbs. up to 6500 lbs. Apex floor plans have rich, warm interiors, full-sized bathrooms, contemporary cabinetry, fabrics and flooring. These lightweight, durable, travel trailers are constructed with a vacuum-bonded, aluminum framed roof, double laminated Azdel composite sidewalls, laminated rear wall, and a laminated, insulated floor.

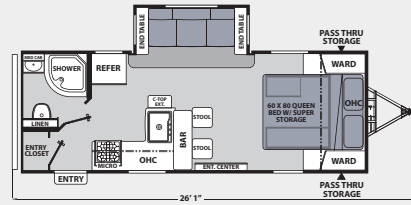
7-1/2' WIDE ULTRALITES 8' WIDE ULTRALITES



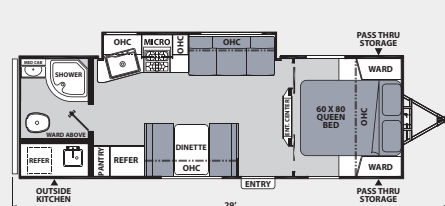
215 RBK



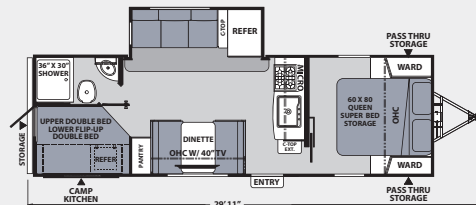
245 BHS



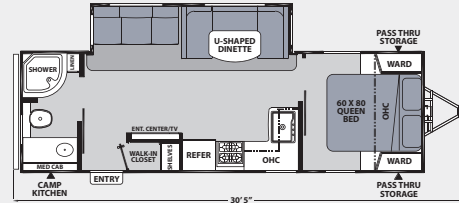
211 RBS



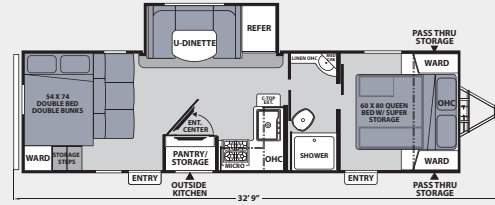
251 RBK



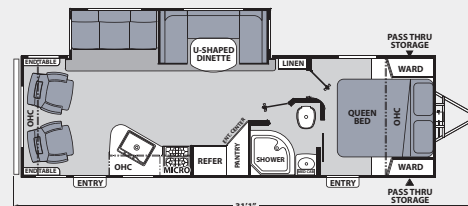
256 BHS



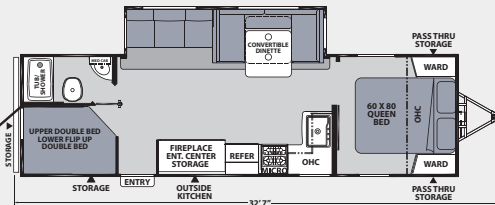
265 RBSS



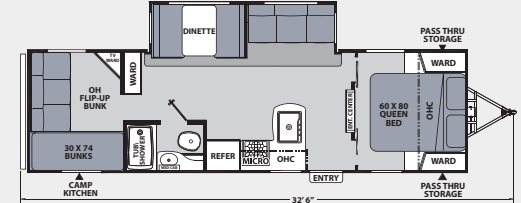
266 BHS



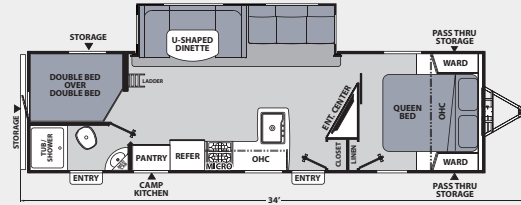
279 RLSS



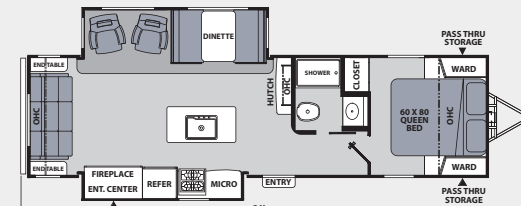
284 BHSS



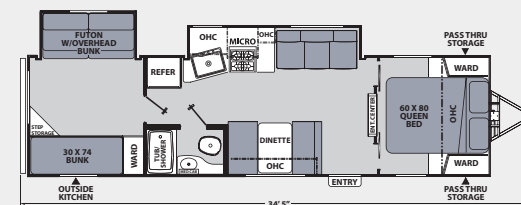
289 TBSS



290 BHS



293 RLDS



300 BHS

EXTENDED CAMPING
HEATED & ENCLOSED UNDERBELLY

Double axle floor plans only.

Apex 7.5' Wides	215 RBK	245 BHS	Apex 8' Wides	211 RBS	251 RBK	256 BHS	265 RBSS	266 BHS	279 RLSS	284 BHSS	289 TBSS	290 BHS	293 RLDS	300 BHS
Hitch Weight	446	578	Hitch Weight	788	570	694	734	TBD	620	810	715	758	832	672
Carrying Capacity	2,135	1,914	Carrying Capacity	2,040	2,016	2,128	1,948	TBD	2,110	1,578	1,880	1,432	1,360	1,623
UVW	4,365	4,586	UVW	4,960	4,984	5,472	5,652	TBD	5,490	6,022	5,720	6,168	6,440	5,977
GVWR	6,500	6,500	GVWR	7,000	7,000	7,600	7,600	TBD	7,600	7,600	7,600	7,600	7,800	7,600
Ext. Length (Incl. Bumper to Hitch)	25' 6"	27' 7"	Ext. Length (Incl. Bumper to Hitch)	26' 1"	29'	29' 11"	30' 5"	32' 9"	31' 1"	32' 7"	32' 6"	34'	34'	34' 5"
Ext. Height (Incl. A/C)	9' 11"	9' 10"	Ext. Height (Incl. A/C)	10' 5"	10' 1"	10' 5"	10' 6"	TBD	10' 6"	10' 7"	10' 6"	10' 7"	10' 7"	10' 1"
Int. Height (Coach)	78"	78"	Int. Height (Coach)	78"	78"	78"	78"	78"	78"	78"	78"	78"	78"	78"
Awning Length	13'	18'	Awning Length	16'	16'	16'	18'	TBD	18'	18'	18'	20'	18'	18'
Fresh Water Capacity (gal.)	50	50	Fresh Water Capacity (gal.)	50	50	50	50	50	50	50	50	50	50	50
Grey Water Capacity (gal.)	35	35	Grey Water Capacity (gal.)	35	35	70	70	TBD	35	70	35	35	70	35
Waste Water Capacity (gal.)	35	35	Waste Water Capacity (gal.)	35	35	35	35	35	35	35	35	35	35	35

APEX CONSTRUCTION

Apex features the combination of environmentally friendly Azdel Onboard RV composite panels and Alumaticage Construction to maximize towability.

These Ultralite Travel Trailers are designed for towing by today's half-ton trucks, minivans and SUVs. From 18' to 34'. All units are available under 6,500 lbs.

Construction Features

1. 3M Breathable graphics
2. Tinted, safety glass windows
3. Welded aluminum structure, vacuum-bonded sidewalls and rear wall, laminated floor
4. Aluminum reinforced vacuum-bonded roof
5. Dicor Crossflex roofing membrane
6. Azdel composite sidewall and rear wall panels
7. Aerodynamic front profile with fiberglass front cap and integrated window
8. Dual 20 lb. LP tanks (Nanos have a single 20 lb. LP tank)
9. Insulated slam latch doors with magnetic hold-ups (N/A Nanos)
10. Smooth exterior fiberglass skin
11. Aluminum framed openings
12. Fully enclosed, heated underbelly (Double axle models)
13. Fully welded tubular aluminum floor structure
14. Schwintek™ and rack and pinion slide systems (Deep slides)
15. Congoleum® DiamondFlor flooring
16. Powder E-coated, welded I-beam frame with full-depth crossmembers
17. Dexter® E-Z Lube® axle hubs
18. Nitrogen filled radial tires

Dicor Crossflex Synthetic Thermoplastic Roofing System

- Extreme tear and puncture resistance
- Flexible
- Lightweight
- High solar reflectance
- High thermal emissivity



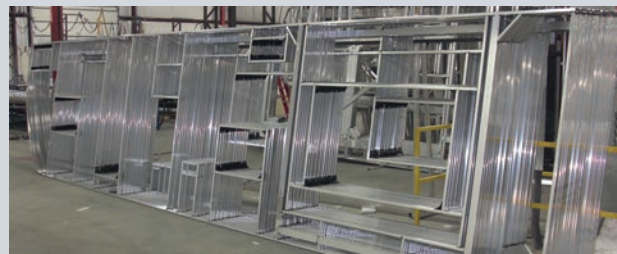
Double axle floor plans only.

Lower Center of Gravity for Better Towability

LIGHTWEIGHT DURABILITY

Welded Aluminum Framing

Durable, lightweight aluminum cage – individually framed cut-outs to make for stronger sidewalls and reduce water leaks.



Aluminum Reinforced Vacuum-bonded Roof

Evenly distributed insulation enhances structural integrity.

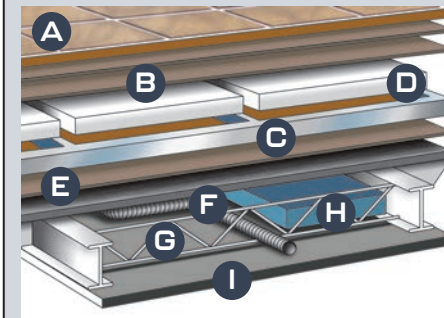


Fiberglass Front Cap

- ¾ Front fiberglass cap for superior strength
- Automotive glass front window with superior UV protection
- Diamond plate lower stone guard
- Integrated LED accent lights

Vacuum Bonded Sidewalls and Roof

- Stronger construction
- Lighter weight



Six Layer Laminated Floor

- A Residential durable insulated floor covering
- B Double layer Luan plywood top decking
- C Welded aluminum frame
- D Block foam structural insulation
- E Luan plywood bottom decking
- F Darco waterproof floor wrap
- G Cross member support
- H Holding tanks
- I Heated and enclosed underbelly (Double axle models)

Apex Is Certified Green TRA Gold Level Rated

As a Certified Green RV, APEX utilizes effective production techniques in combination with healthy materials, plus efficient usage of energy and water to produce a high quality RV with less environmental impact.



Check us out at:
coachmenrv.com/travel-trailers/apex-ultra-lite



Azdel composite panels are produced using a patented blend of polypropylene and fiberglass to create a durable, lightweight, water and temperature resistant, odorless and environmentally friendly wall that will increase the life of your RV.



Weight matters
50% Lighter than wood



Let it rain – no mold, rot, mildew, warping or delamination



Unaffected by changes in temperature & humidity



Twice the thermal insulation of plywood



Free of formaldehyde, toxic odors and chemicals



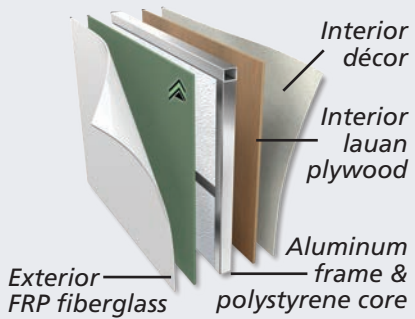
Longer RV life



Quieter RVs



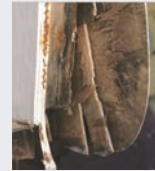
No deforestation



Knock on Wood

Traditional Lauan Sidewall Panels:

- Absorb and retain water
- Affected by humidity and temperature changes
- Susceptible to mold, rot, warpage and delamination
- Imported
- Heavier
- Inferior thermal insulation and noise blocking



Avoid Costly Water Damage

- Water and wood don't mix
- Water can cause rot, mold and delamination of wood sidewall panels causing thousands of dollars in damage



Soak Test

- 60 Day soak test
- Wood has visible mold and decay requiring wall repair
- AZDEL was 100% unaffected

APEX STANDARD FEATURES



Entertainment Center

Includes an AM/FM stereo with Bluetooth, LED TV and upgraded stereo speakers. (Available on 284 BHSS, 290 BHS and 293 RLDS.)



Stainless Steel Sink

Farm style sink for easy clean up of large pots and pans.



LED Interior Lighting

is energy efficient, bright and long lasting



Camp Kitchen

Camp kitchens are equipped with either a grill or a 2-burner cooktop, and a refrigerator. (Available on 194 BH, 208 BHS, 245 BHS, 256 BHS, 265 RBSS, 289 TBSS, 290 BHS, 293 RLDS – floorplan specific.)



Outside Kitchen

Includes a grill or two-burner cooktop, large refrigerator, plumbed sink, gooseneck faucet and additional storage. (Available on 203 RBK, 215 RBK, 251 RBK, 266 BHS, 284 BHSS and 300 BHS – floorplan specific.)



Dual LP Tanks with Cover

(2) 20 lb. tanks with cover for longer camping trips



Exterior Steps

Sturdy, solid step adjusts to terrain for enhanced stability and safety



One-Piece Seamless Countertop

Stain resistant, lighter weight countertop, no T-mold edge. (Helps prevent water damage.)

Kitchen Backsplash

Easy to clean. (N/A Nano)

Magnetic Door Closures

Hold door up and out of the way while accessing storage. Ultralite insulated slam-latch door shown.



EXPERIENCE YOUR OWN ULTRALITE ADVENTURE

Versatile Apex Travel Trailers provide a perfect home base, wherever the road leads.



APEX'S FULL LINE OF ULTRALITES ARE PERFECT FOR SMALLER TOW VEHICLES



423 N. Main Street • P.O. Box 30 • Middlebury, IN 46540

To learn more about Coachmen RV and our products and see how Coachmen is making the easy life easier, visit <https://coachmenrv.com/travel-trailers/apex-ultra-lite>.

Coachmen Interactive Mobile Manuals

Download your Coachmen mobile app or visit our dynamic online manual to enhance your ownership experience. These interactive options provide incredible ease and insight into use, maintenance and enjoyment of your Coachmen product. Ranging from "How-To" videos, pictures and illustrations of various components, systems and features to fully searchable content and downloadable PDFs for individual component owner's manuals, answers are always just a click away.



YOUR APEX DEALER

Each Forest River RV is weighed at the manufacturing facility prior to shipping. A label identifying the unloaded vehicle weight of the actual unit and the cargo carrying capacity is applied to every Forest River RV prior to leaving our facilities. The load capacity of your unit is designated by weight, not by volume, so you cannot necessarily use all available space when loading your unit. All information contained in this brochure is believed to be accurate at the time of publication. However, during the model year, it may be necessary to make revisions and Forest River, Inc., reserves the right to make all such changes without notice, including prices, colors, materials, equipment and specifications as well as the addition of new models and the discontinuance of models shown in this brochure. Therefore, please consult with your Forest River dealer and confirm the existence of any materials, design or specifications that are material to your purchase decision. ©2021 Apex by Coachmen RV, a Division of Forest River, Inc., a Berkshire Hathaway company. All rights reserved. 5/21

**24/7 EMERGENCY
ROADSIDE ASSISTANCE
WITH VEHICLE PURCHASE***

<p>TOWING JUMP-STARTS TIRE CHANGES FLUID DELIVERY LOCKOUT SERVICE</p>	<p>WINCH-OUT MOBILE MECHANIC TECHNICAL SUPPORT DEALER LOCATOR SERVICES</p>
---	--

VALID FOR 1 YEAR FROM DATE OF PURCHASE

WWW.KOACARECAMPS.ORG

Fighting + Making
Cancer + Memories

GVWR (Gross Vehicle Weight Rating) - is the maximum permissible weight of the unit when fully loaded. It includes all weights, inclusive of all fluids, cargo, optional equipment and accessories. For safety and product performance do NOT exceed the GVWR.

GAWR (Gross Axle Weight Rating) - is the maximum permissible weight, including cargo, fluids, optional equipment and accessories that can be safely supported by a combination of all axles.

UVW (Unloaded Vehicle Weight)* - is the typical weight of the unit as manufactured at the factory. It includes all weight at the unit's axle(s) and tongue or pin and LP Gas. The UVW does not include cargo, fresh potable water, additional optional equipment or dealer installed accessories.

*Estimated average based on standard build optional equipment.

CCC (Cargo Carrying Capacity)** - is the amount of weight available for fresh potable water, cargo, additional optional equipment and accessories. CCC is equal to GVWR minus UVW. Available CCC should accommodate fresh potable water (8.3 lbs per gallon). Before filling the fresh water tank, empty the black and grey tanks to provide for more cargo capacity.

**Estimated average based on standard build optional equipment.

COACHMEN OWNERS ASSOCIATION

FREE MEMBERSHIP

www.coachmenowners.com

CUSTOMER SATISFACTION

FOREST RIVER
encourages you to

BUY LOCAL

PREFERENTIAL SERVICE

PRODUCT INFORMATION

www.ForestRiverBuyLocal.com

Learn More

Scan this barcode using a QR Reader on your smart phone to learn more about Forest River.

A Berkshire Hathaway company.

