

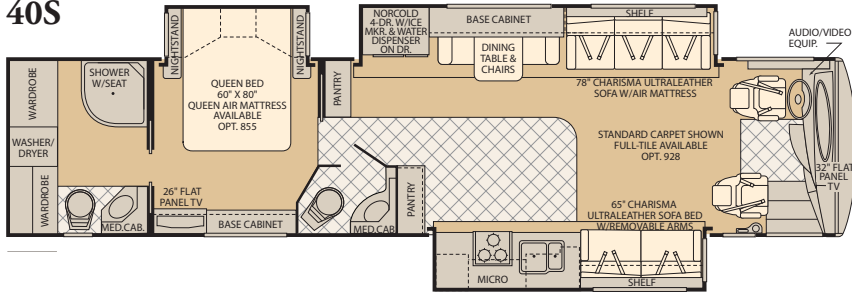


*American Coach*®

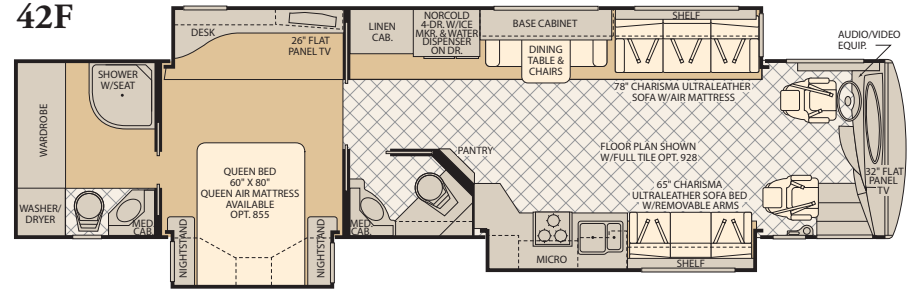
THE OFFICIAL LUXURY COACH OF THE AMERICAN ROAD

**2009 AMERICAN TRADITION**

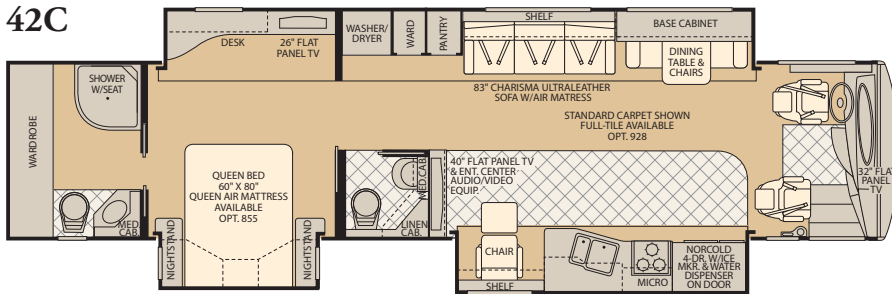
40S



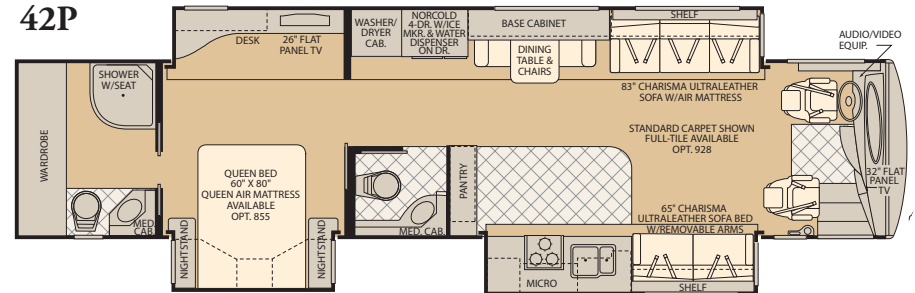
42F



42C



42P



Not all available options are shown. See your American Coach dealer or visit our website at [www.AmericanCoach.com](http://www.AmericanCoach.com) to see all available options. Seatbelt configuration may vary depending on options chosen.

## FEATURES - INTERIOR

### GENERAL AMENITIES

- Decorative Wood Window Treatments
- Solid Wood Face Framed Cabinetry
- Decorative Ceiling and Air Plenum
- Matte Finish Porcelain Tile Floor at Entry, Galley
- Accent Rope Lighting
- Fan-Tastic® Fan Rain Sensor Vents (3)
- Interior Multi-Plex Switches
- Mystera Solid Surface Window Shelves

### DRIVER CONVENIENCE

- Navion®/R5000 Information and Entertainment Center; AM, FM, Single CD, MP3, Camera Monitor w/One Way Audio
- Dash Storage with Corian® Top
- 6-Way Power Driver Seat (UltraLeather™)
- 6-Way Power Passenger Seat (UltraLeather™)
- Sirius Satellite Radio (6 Month Subscription)
- Smart Wheel w/Leather and Burl Wood Trim
- Top Mounted Intermittent Windshield Wipers
- Power Driver Window
- One-Piece Windshield Bonded to Steel
- Denso® Dash Climate Control System
- Adjustable Brake & Throttle Pedals
- Low Profile Automotive Style Dash
- Keyless Entry Door Access w/Key Fob
- "Day/Night" Double Roller Power Shade

## FEATURES - EXTERIOR

### CHASSIS/ENGINE

- Liberty Chassis w/E-Coated Platform
- Spartan® MMGT, Modular Chassis System w/Cummins ISL 425HP (40' - 42' Models)
- Allison® 3000 MH, 6-Speed Transmission
- Independent Front Suspension
- 295/80R LRH 22.5" Michelin Radial Tires – 40' Model
- 315/80R LRH 22.5" Michelin Radial tires – 42' Models
- Automatic 4-Point Hydraulic Leveling System
- Trailer Hitch Receiver 15,000 lbs.
- Aluminum Wheels
- Engine Brake On-Off (Lo-Hi) (Cummins 425 HP)
- (2) 12V Group 31 Chassis Batteries
- Air Ride Suspension
- Chassis Filter Service Center

### CONSTRUCTION

- Electro-Coated Heavy Duty Steel Framing
- Aluminum Framed Wall Construction
- Interlocking Aluminum Framing Connections
- Vacu-bond® Walls, Roof, and Floor
- 5 Layer Flooring with 3" Insulation
- 6 Layer Roof with 5 ¼" Bead Foam Insulation (at Centerline)
- Dupont® Automotive Paint (Cut and Buff)

## LIVING ROOM

- Electric Step Well Cover
- Centralized Audio-Electronics
- Automatic Generator Start System
- 30" Deep Living Room Slides (Select Models)

## GALLEY

- Mystera Solid Surface Counter, Range, Sink Covers
- Countertop "Non Drip" Edge Treatment
- Stainless Steel Sink, Large 60/40
- Kohler High Rise Galley Faucet w/Pullout Sprayer
- Porcelain and Ceramic Tile Backsplash
- Solid Hardwood Drawer Fronts
- Roller Bearing Drawer Guides, Full Extension
- Cabinet Storage for Sink & Range Covers
- Task Halogen Lighting

## BEDROOM

- Recessed Bedroom Ceiling Fan
- Solid Wood 6 Panel Bath and Bedroom Doors
- 30" Deep Bedroom Slides
- Solid Wood Framed Headboard w/Suede Accent
- Queen Innerspring Pillow Top Mattress
- Day/Night Pleated Shades

- One-Piece Fiberglass Roof
- Tuff-PEX® Plumbing System

### GENERAL AMENITIES

- Diamond Shield Protective Front Mask
- 2000-Watt Pure Sine Wave Inverter/Charger
- (4) Absorbed Glass Mat, 6 Volt Batteries
- Electrical System Protection
- Energy Management System (50 Amp)
- Chrome "Bus Style" Heated Mirrors w/Integrated Side View Cameras
- Sensa Tank Level Monitoring System
- Full Width Rear Rock Guard
- Roof Mounted Engine Air Intake
- Two Piece Aluminum Rear Ladder
- Power Double Entry Step
- Boxed End Slide-Out Topper Awnings
- Multi-Plex Power Management Plus

### APPLIANCES

- Onan® 8.0kW Quiet Diesel Generator (40')
- Onan® 10.0kW Quiet Diesel Generator (42')

### WINDOWS/AWNINGS/DOORS

- 30" Avionics Entry Door w/Air Latches
- Carefree Awning Package
- Powered Entry Door Awning
- Color Coded Awnings & Awning Arms
- Tinted Dual Pane Windows with Screens

- Cedar Lined Wardrobe
- Full Length Rear Wardrobe

## BATHROOM

- Polished Mystera Solid Surface Lavvy Countertop w/Porcelain Bowl
- Kohler Faucet Hardware
- Color Coordinated Fiberglass Shower, w/ Molded Seat-Shelf (Select Models)
- Obscure Decorative Shower Glass Enclosure
- Residential China Bowl Flush Toilet
- Residential China Bowl Vacuum Flush Toilet (Rear Bath, Select Models)

## FURNITURE

- Exclusive Design, Charisma Furniture
- Charisma UltraLeather™ Sofa Hide-a-Bed
- Charisma UltraLeather™ Sofa Bed w/Removable Arms
- Solid Surface Extending Dinette Table, 2 Decorative Chairs, 2 Folding Chairs
- Extra Deep Dinette w/ Base Cabinet Storage, Laptop Tray and Plug-ins
- Decorative Chairs and Folding Chairs Not Available with Face to Face Dinette

## APPLIANCES

### GENERAL

- Vented Washer/Dryer

## OPTIONS - INTERIOR

- Sony® 32" LCD TV at Mid Ship (40S, 42P)
- Digital Video Recorder
- 6-Way "Spacious" Seat (UltraLeather™)
- Pressure Pro®, Tire Pressure Monitor
- Garmin® Navigation System
- 5 Premium Wood and 4 Fabric Décors
- Charisma UltraLeather Sofa Bed w/Air Mattress (Select Models)
- Dinette Face to Face Wrap Around Ensemble (Charisma w/UltraLeather™)
- Dometic® 14 cu. ft., SideWise Refrigerator
- Dishwasher w/Wood Cabinet Front
- Central Vacuum System w/Accessory Kit
- Full Tile Flooring
- Heated Full Tile Floor
- Residential Refrigerator (Select Floor Plans)
- 3 Burner Range with Oven
- Stacking Washer/Dryer (Select Models)
- Washer/Dryer Ready (Deletes Washer/Dryer)
- King Bed with Pillow Top (N/A 40S)
- Select Comfort Queen Air Mattress
- Select Comfort King Air Mattress (N/A 40S)
- Custom Interior Request
- Factory V.I.P. Delivery
- Canadian Standards Build (Select Models)

## BEDROOM

- Sony® 26" LCD HDTV
  - Sony® Home Entertainment System
  - Direct TV® HD, Digital Satellite Receiver Galley
- ### GALLEY
- Norcold® 12 cu. ft. 4 Door Refrigerator
  - GE® Convection Microwave Oven
  - Recessed 3 Burner Cook Top

### LIVING ROOM

- Sony® 32" LCD HDTV
- Sony® 40" LCD HDTV (42C)
- Sony® DVD Dream System, Home Theater
- Direct TV® HD, Digital Satellite Receiver
- TracVision® R5 Series "In Motion" HD-DSS

### HEATING/PLUMBING

- Aqua Hot Hydronic Heating System
- Dual 15.0M Low Profile Roof Air Conditioners, (3) AC's on 42' Models
- Heat Pump on Rear AC Unit

### SAFETY

- Smoke Detector/Alarm
- Carbon (CO) Monoxide Detector/Alarm
- Fire Extinguisher
- Propane (LP) Leak Detector/Alarm
- Momentary Courtesy Lighting at Entry
- Lighted Exterior Grab Handle with Logo

## OPTIONS – EXTERIOR

- 2 Exterior Graphic Design Choices
- Custom Exterior Paint Color Request
- Automatic 4-Point Leveling, Air and Hydraulic
- Exterior Spotlight
- Exterior Entertainment Center
- Girard Awning Package
- Power Water Hose Reel
- Power Cord Reel, 50 AMP (Std on 42')
- Solar Charging Panel (63w)
- Power Luggage Door Locks w/Key Fob
- 1st Full Bay 90" Slide Tray
- 1st Full Bay 36" and 54" Slide Tray
- 2nd Full Bay 90" Slide Tray
- 2nd Full Bay 36" and 54" Slide Tray
- 2nd Full Bay 54" Slide Tray w/Aqua Hot System
- Waste Management System (Macerator)
- Norcold 100# Capacity Freezer
- Additional Inverter and Batteries (Select Floor Plans)

# WEIGHTS AND MEASUREMENTS

AMERICAN TRADITION

WEIGHTS	40S	42C	42F	42P
GVWR (lbs) <sup>1</sup>	34,600	46,600	46,600	46,600
Front GAWR (lbs) <sup>2</sup>	14,600	16,600	16,600	16,600
Rear GAWR (lbs) <sup>2</sup>	20,000	20,000	20,000	20,000
Tag Axle GAWR (lbs) <sup>2</sup>	N/A	10,000	10,000	10,000
GCWR (lbs) <sup>3</sup>	49,600	61,600	61,600	61,600
Hitch Rating Weight (lbs) <sup>†</sup>	15,000	15,000	15,000	15,000
Tongue Weight (lbs) <sup>†</sup>	1,500	1,500	1,500	1,500
DIMENSIONS AND CAPACITIES				
Wheelbase	278"	302"	302"	302"
Overall Length <sup>4</sup>	40' 11.5"	42' 11.5"	42' 11.5"	44' 11.5"
Overall Height (w/ Sat Dome)	13' ¾"	13' 2¼"	13' 2¼"	13' 2¼"
Overall Width (maximum) <sup>5,6</sup>	102"	102"	102"	102"
Interior Height (maximum)	84"	84"	84"	84"
Interior Width (maximum)	96"	96"	96"	96"
Fresh Water Holding Tank (gal)	90	90	120	90
Grey Water Holding Tank (gal)	70	70	70	70
Black Water Holding Tank (gal)	40	40	40	40
Appliance Propane Tank (gal) (WC) <sup>7</sup>	30.6	30.6	38	30.6
Fuel Capacity (gal)	125	150	150	150
Std. Carefree Patio Awnings Front/Rear	17' 6"	19' 6"	17' 6"	17' 6"
Opt. Girard Driver Side Awnings Front/Rear	12' 5"	13' 4"	12' 5"	12' 5"

Liquid Weight Reference: Water (gal) = (8.3 lbs/3.8 kgs) Fuel (gal) = (7.1 lbs/3.2 kgs) Propane (gal) = (4.2 lbs/1.9 kgs)

Metric Conversion: Multiply pounds x 0.453 to obtain kilograms. Multiply gallons x 3.785 to obtain liters.  
Multiply liters x 61 to obtain cubic inches.

## CHASSIS

Frame: Liberty Chassis

Engine: ISL 425 HP, 8.8L

Torque: 1200 lb-ft @ 1300 RPM

Transmission: Allison® 3000 MH, 6 Speed w/Electronic Shifter

Alternator Amps: 200 Amp, Leece Neville

Tires: 315/80R 22.5 Michelin® Radial / 295/80R 22.5 Michelin® Radial (40S only)

©2008. Fleetwood Enterprises, Inc.  
Printed in the USA. Inventory Control Number AT09F1, 7/08.  
Model Year 2009, First Edition.

- GVWR (Gross Vehicle Weight Rating) is the maximum permissible weight of this fully loaded motor home. The GVWR is equal to or greater than the sum of the (UVW) unloaded vehicle weight plus the (OCCC) occupant cargo carrying capacity\*.
- GAWR (Gross Axle Weight Rating) is the maximum permissible loaded weight a specific axle is designed to carry.
- GCWR (Gross Combined Weight Rating) is the value specified by the motor home manufacturer as the maximum allowable loaded weight of this motor home with its towed vehicle. Towing and braking capacities may be different. Refer to American Coach and chassis manufacturer's manuals for complete information.
- Length measured from front bumper to rear bumper (excludes accessories).
- Excludes safety equipment and awnings.
- Motor homes feature a body-width over 96" which will restrict your access to certain roads. Before purchasing, you should research any state and/or province road laws which may affect your usage.
- Tank manufacturer's listed water capacity (WC). Actual propane capacity is 80% of water listing as required by the safety code.

N/A = Not Applicable

\* UVW and OCCC are found on the label containing the federal certification tag in each RV.

† The chassis manufacturer recommends the installation of a supplemental brake control system to activate the brakes on the vehicle or trailer you are towing. Hitch receiver ratings expressed are maximum for the hitch receiver installed and may require the purchase of additional equipment that is dependant on the weight of the towed load. Consult with hitch receiver manufacturer for further information.

IMPORTANT — PLEASE READ: Product information, photography and illustrations included in this publication were as accurate as possible at the time of printing. For further product information and changes, please visit our website at [www.AmericanCoach.com](http://www.AmericanCoach.com) or contact your local American Coach dealer. Prices, materials, design and specifications are subject to change without notice. All weights, fuel, liquid capacities and dimensions are approximate. American Coach has designed its recreational vehicles to provide a variety of uses for its customers. Each vehicle features optimal seating, sleeping, storage and fluid capacities. The user is responsible for selecting the proper combination of loads (i.e. occupants, equipment, fluids, cargo, etc.) to ensure that the vehicle's capacities are not exceeded.



*American Coach*®

THE OFFICIAL LUXURY COACH OF THE AMERICAN ROAD

For more information, visit us at  
[www.AmericanCoach.com](http://www.AmericanCoach.com) or call us toll free at 800.854.1344