

# **AVer PTZ Management**

## **User Manual**



## **COPYRIGHT**

©2020 AVer Information Inc. All rights reserved.

All rights of this object belong to AVer Information Inc. Reproduced or transmitted in any form or by any means without the prior written permission of AVer Information Inc. is prohibited. All information or specifications are subject to change without prior notice.

## **TRADEMARKS**

“AVer” is a trademark owned by AVer Information Inc. Other trademarks used herein for description purpose only belong to each of their companies.

## **DISCLAIMER**

No warranty or representation, either expressed or implied, is made with respect to the contents of this documentation, its quality, performance, merchantability, or fitness for a particular purpose. Information presented in this documentation has been carefully checked for reliability; however, no responsibility is assumed for inaccuracies. The information contained in this documentation is subject to change without notice.

In no event will AVer Information Inc. be liable for direct, indirect, special, incidental, or consequential damages arising out of the use or inability to use this product or documentation, even if advised of the possibility of such damages.

## **Help**

### **Global**

Download Center: <https://www.aver.com/download-center>

Technical Support: <https://www.aver.com/technical-support>

### **USA**

Download Center: <https://www.averusa.com/pro-av/support/>

Technical Support: <https://averusa.force.com/support/s/contactsupport>

### **European Headquarters**

Download Center: <https://www.aver.com/download-center>

Technical Support: <https://www.avereurope.com/technical-support>

## **Contact Information**

### **Global**

AVer Information Inc.

<https://www.aver.com>

8F, No.157, Da-An Rd., Tucheng Dist., New Taipei City 23673, Taiwan

Tel: +886 (2) 2269 8535

### **USA**

AVer Information Inc.

<https://www.averusa.com>

668 Mission Ct., Fremont, CA 94539, USA

Tel: +1 (408) 263 3828

Toll-free: +1 (877) 528 7824

Technical support: [support.usa@aver.com](mailto:support.usa@aver.com)

### **European Headquarters**

AVer Information Europe B.V.

<https://www.avereurope.com>

Westblaak 140, 3012KM, Rotterdam, Netherlands

Tel: +31 (0) 10 7600 550

Technical support: [eu.rma@aver.com](mailto:eu.rma@aver.com)

# Contents

<b>PREFACE</b>	1
<b>MINIMUM SYSTEM REQUIREMENT</b>	1
<b>DOWNLOADING THE APPLICATION</b>	2
<b>CONNECTION</b>	3
<b>INSTALLATION</b>	4
Install AVer PTZ Management	4
<b>USING AVER PTZ MANAGEMENT</b>	5
Start	5
Forget Password	6
Main Functions Introduction	7
Camera	7
Setup	8
Management	9
Search and Add Camera	10
Make a Group	14
Change the Camera Name	16
Configure System	17
Set Selection	18
Pan/Tilt Buttons	19
Snapshot	20
Pan/Tilt Speed	21
Zoom In/Zoom Out	21
Focus Far/Near	22
Preset Point	23
Tracking Control	25
Factory Default	27

Reboot ..... 28

Firmware Update ..... 29

Import Profile ..... 30

Export Profile ..... 31

Delete Camera..... 32

Edit User ..... 33

Select System Language..... 35

Logout AVer PTZ Management ..... 36

Troubleshooting ..... 37

# PREFACE

---

AVer PTZ Management is a software to control AVer cameras through the network. This allows user to update and setup camera anywhere as long as network is available.

# MINIMUM SYSTEM REQUIREMENT

---

## **PC hardware and software requirement:**

- CPU: Intel® Core™ i5 CPU or above
- RAM: 4G
- HDD: 10G (Free Space)
- Network card: 100M bps
- OS: Windows® 7, 8, 10 (64 bits)

## DOWNLOADING THE APPLICATION

---

Through the AVer PTZ Management, user can find and manage the AVer cameras. Therefore, user needs to install the AVer PTZ Management at client (PC/laptop) site.

**To get this software, please visit our download center (see below URL) to download.**

**Global:** <https://www.aver.com/download-center>

**USA:** <https://www.averusa.com/pro-av/support/>

**European headquarters:** <https://www.aver.com/download-center>



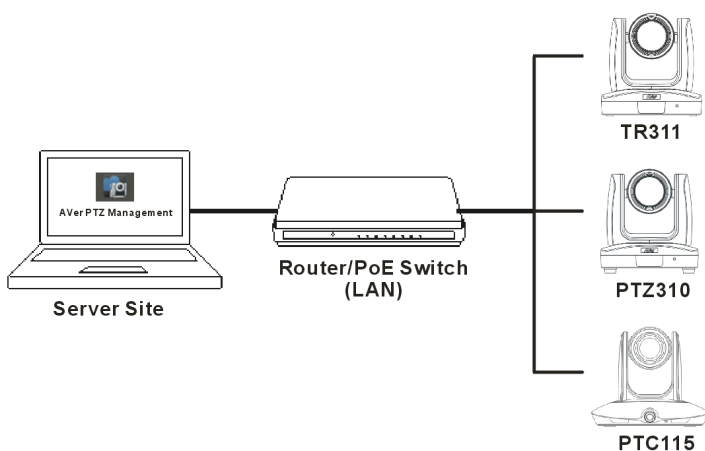
**AVer PTZ Management.exe**

**[Note]** AVer IPCam Utility application will be installed along with AVer PTZ Management. The user can set camera IP via this utility.

# CONNECTION

---

- Please make sure all devices are well-connected and power on.
- Needs to install “**AVer PTZ Management**” application.
- The server site IP needs a public IP address, if client site and server site are not an internal connection (different location).




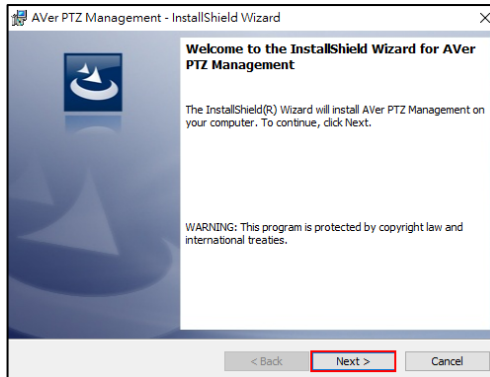
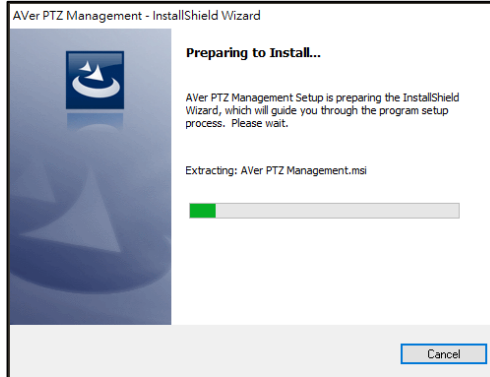


# INSTALLATION

---

## Install AVer PTZ Management

1. After downloading, double-click  to start installation. Follow the on-screen instructions to complete the installation.




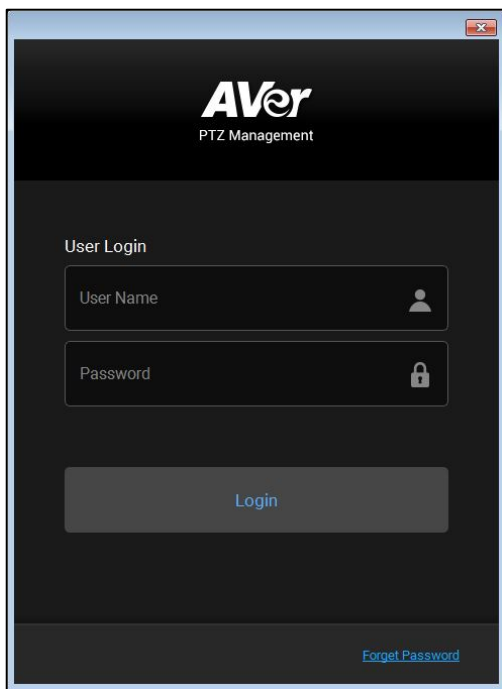
2. After installation, the AVer PTZ Management icon  is displayed.

# USING AVER PTZ MANAGEMENT

---

## Start

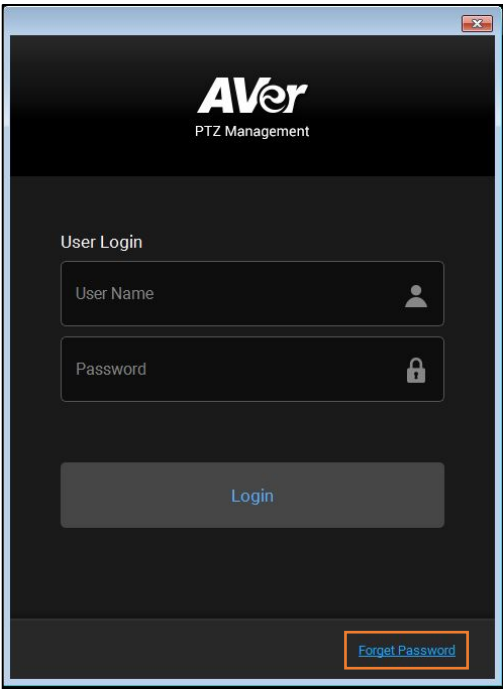
1. Double-click  to launch AVer PTZ Management.
2. Enter User Name and Password (both default values are admin). Then, click “Login.”



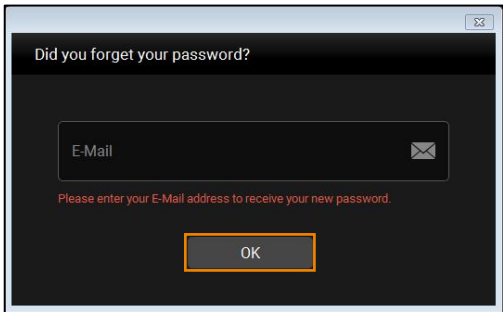
The screenshot shows a window titled "AVer PTZ Management". The window has a dark background. At the top, the "AVer" logo is displayed in white, with "PTZ Management" written below it. Below the logo, the text "User Login" is centered. There are two input fields: "User Name" with a user icon on the right, and "Password" with a lock icon on the right. Below these fields is a large "Login" button. At the bottom right of the window, there is a link that says "Forget Password".

**Forget Password**

If the login password of AVer PTZ Management is forgotten, click [Forget Password](#) hyper link on the login dialog.



Enter the E-mail address and then click [OK](#) button to receive your new password.



# Main Functions Introduction

AVer PTZ Management supplies three main functions, including Camera, Setup, and Management.

## Camera

In the Camera screen, the left section mainly shows the camera view and right section is for camera control panel.



# Setup

Setup screen includes Device, User and System configurations. You can collect the connected camera as a group here.

Configure user including add, edit, and delete.

Search, add and delete camera, create group.

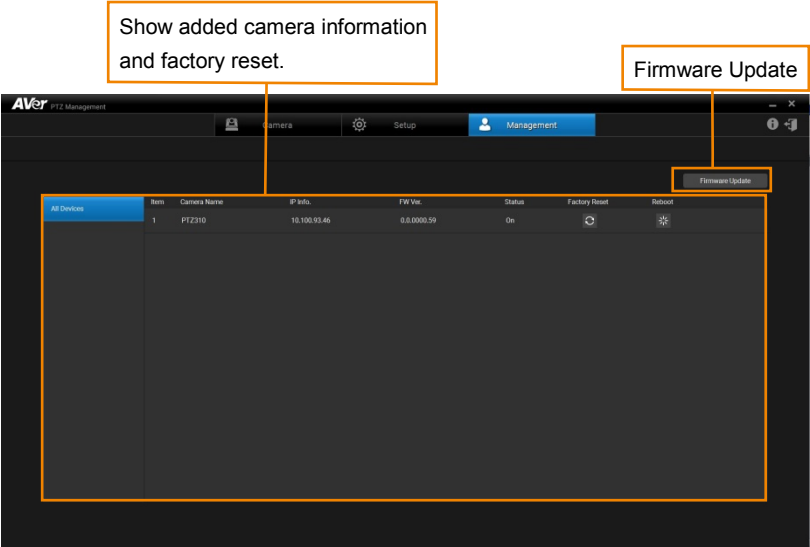
Specify Snapshot folder and Language selection.

The screenshot shows the AVer Management Setup interface. The top navigation bar includes 'Camera', 'Setup' (highlighted), and 'Management'. Below this, there are three tabs: 'Device', 'User', and 'System'. The 'Device' tab is active, showing a table of connected cameras. The table has columns for 'Item', 'Camera Name', 'IP Info', 'Camera Model', 'Status', and 'Remarks'. A single camera is listed with Item 1, Camera Name PTZ310, IP Info 10.100.93.46, Camera Model PTZ310, and Status On. The interface also includes buttons for 'Add', 'Delete', 'Import', and 'Export'.

Item	Camera Name	IP Info	Camera Model	Status	Remarks
1	PTZ310	10.100.93.46	PTZ310	On	

# Management

In the Management screen, you can view the connected camera information such as the number of cameras connected, camera name, IP information, firmware version, camera status, etc. You can update firmware and reset all the values to factory default here.

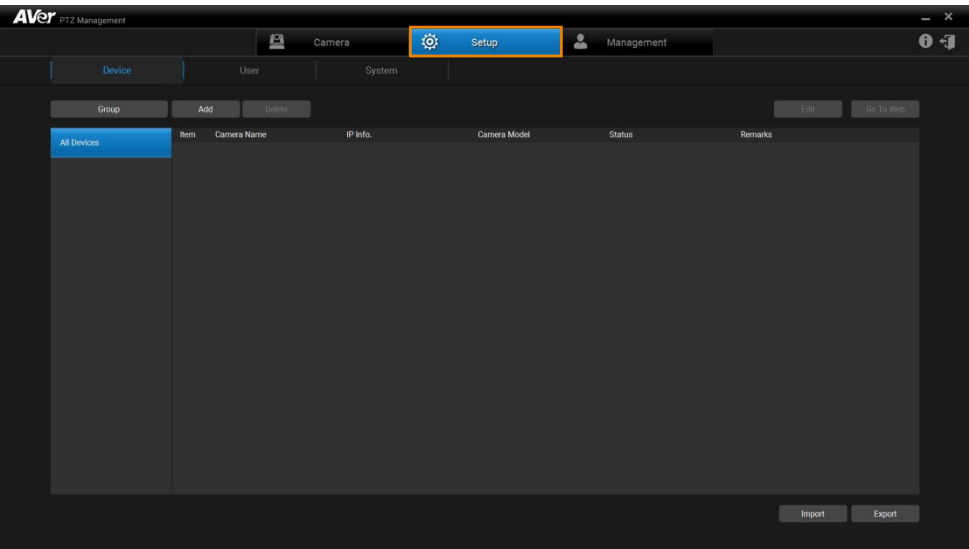


# Search and Add Camera

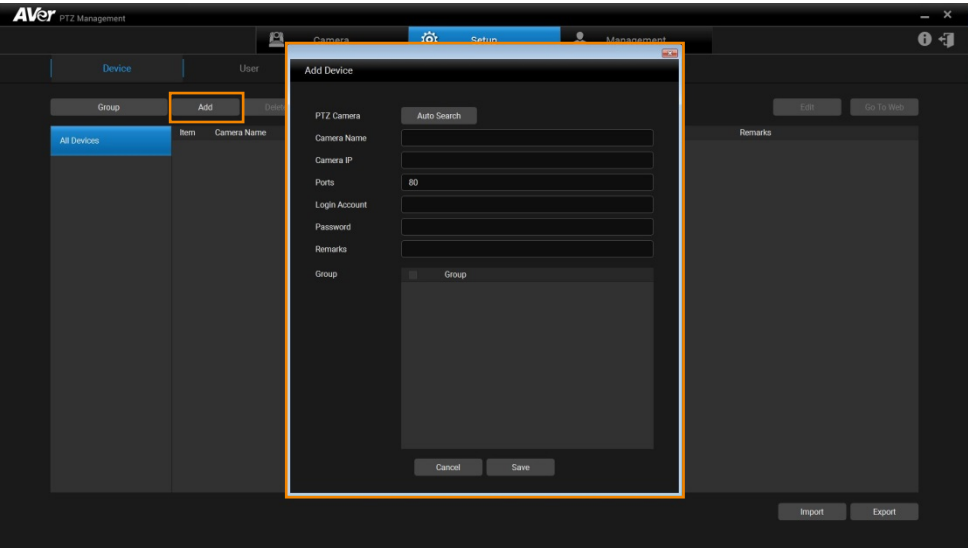
To find the camera and add.

**[Note]** The search function only supports for server site and client site that are at the same LAN network.

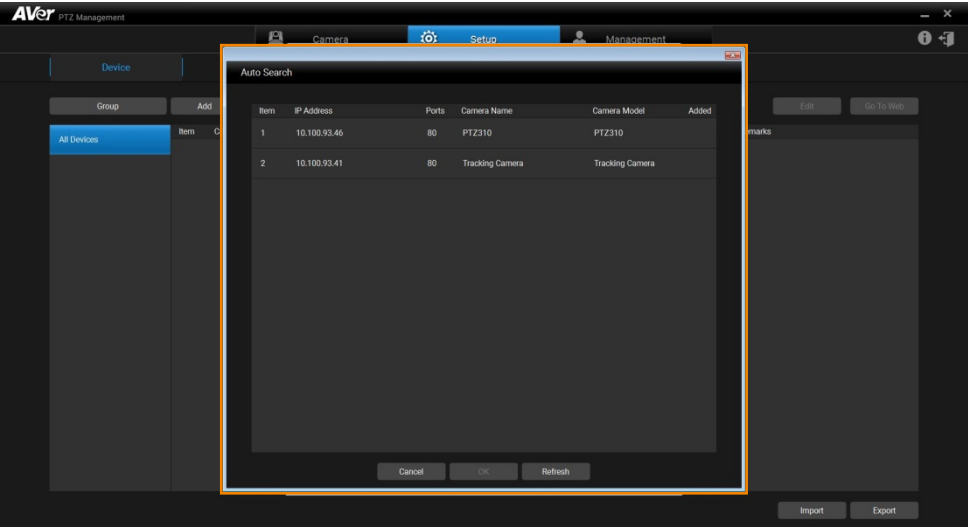
- 1. Click  button to configure connected camera.



2. Click **Add** button to pop up **Add Device** dialog.

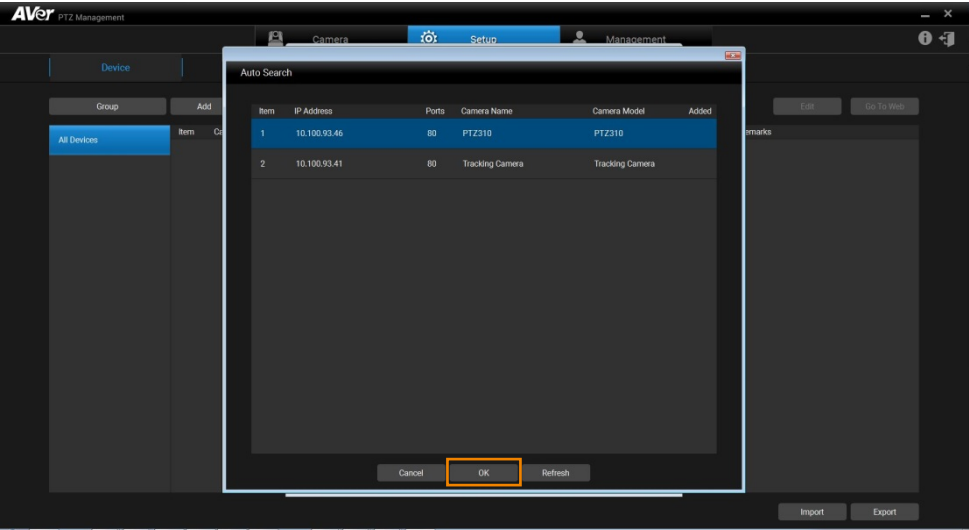


3. Click **Auto Search** button to search camera that can be connected.

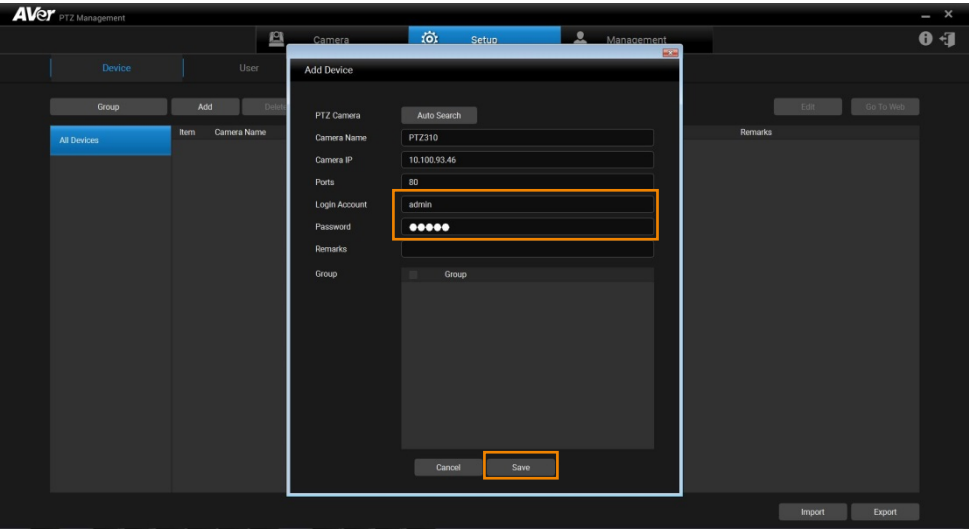




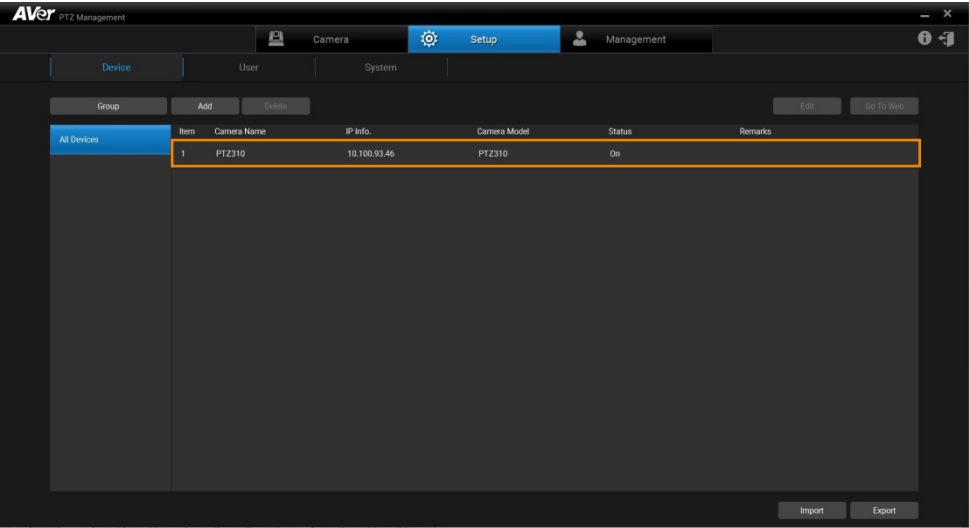
4. Select the camera and then click **OK** button.



5. Input the connected Camera Login Account and Password. Click **Save** button.

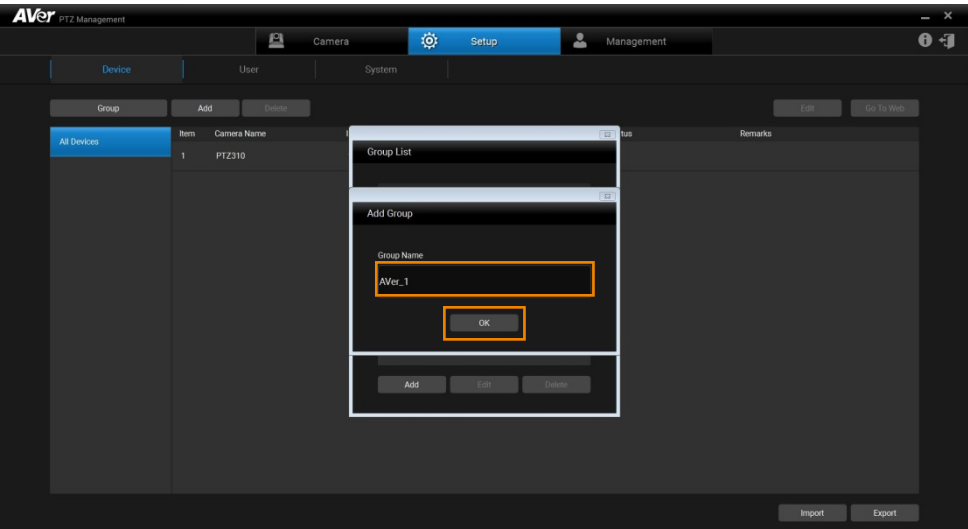
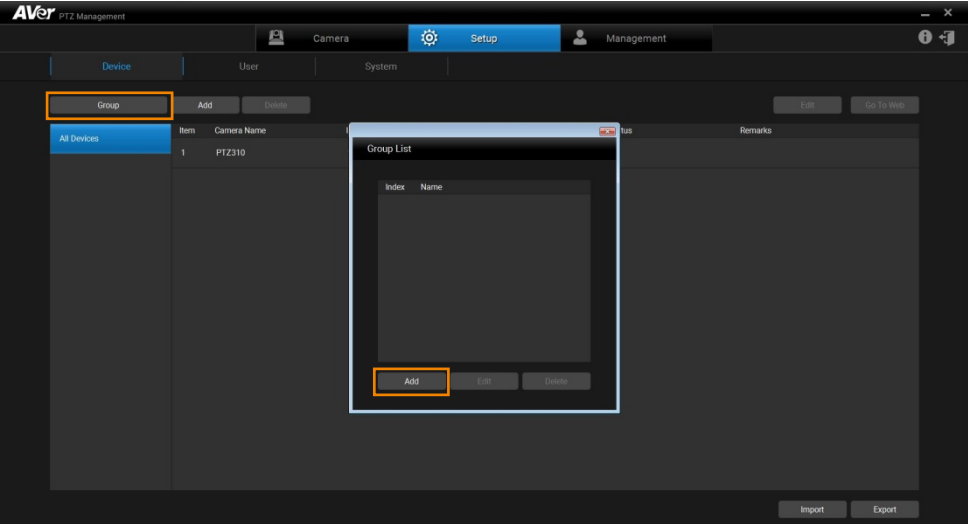


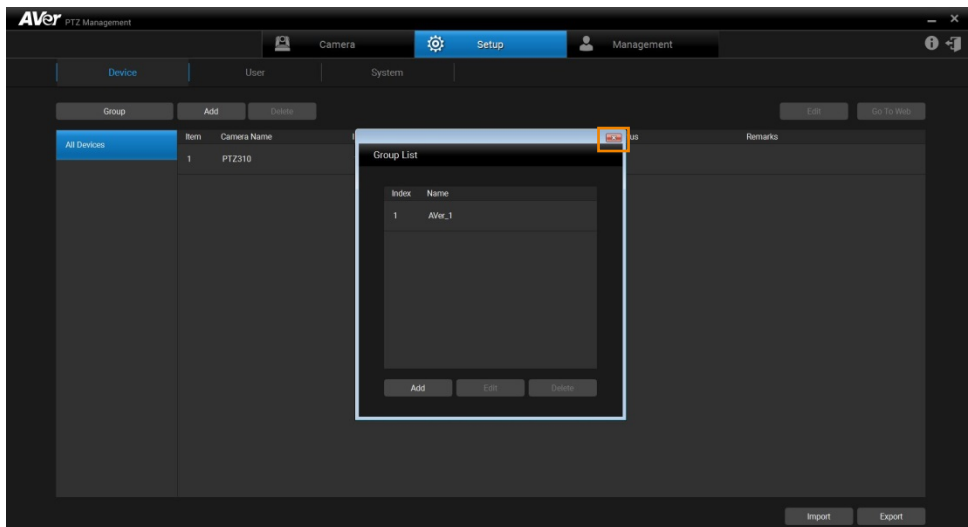
6. Then, the camera will be listed on the screen.



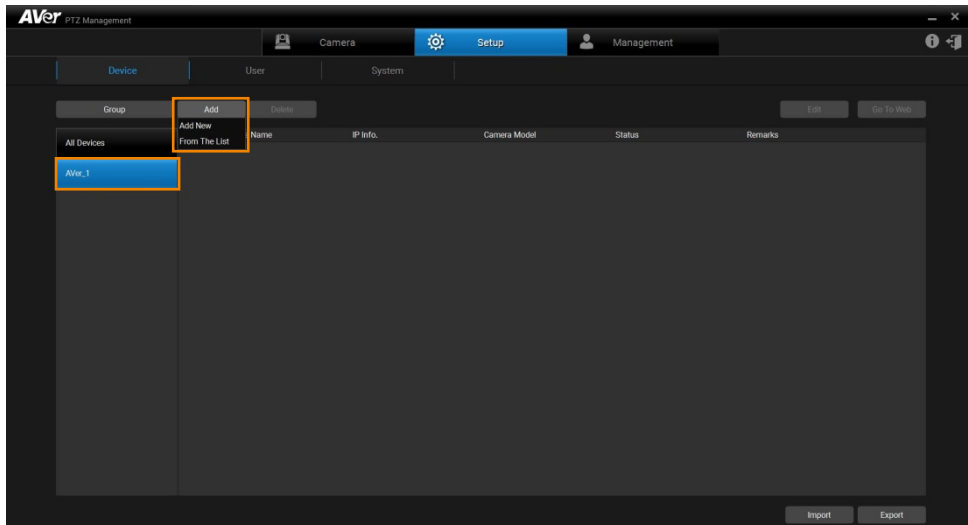
# Make a Group

Click **Group** button to pop up **Group List** dialog and click **Add** button to enter a Group Name. Click **OK** button and **X** button to add the Group under the **All Devices** button.



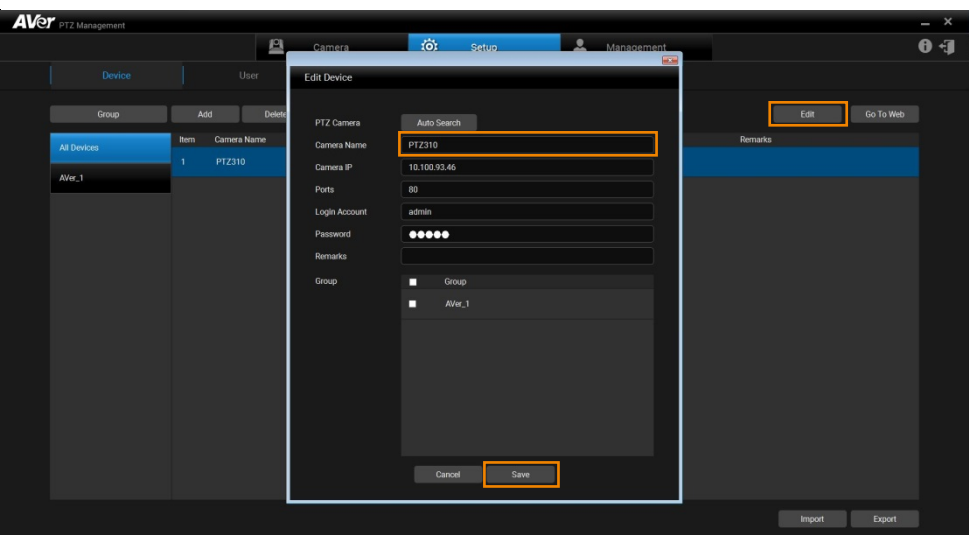


Select the group. Click **Add** button to select to add a new camera or a specified group from the list (default value: up to 16 Groups). The **Add Device** dialog or **Add existing device** dialog will pop up respectively.




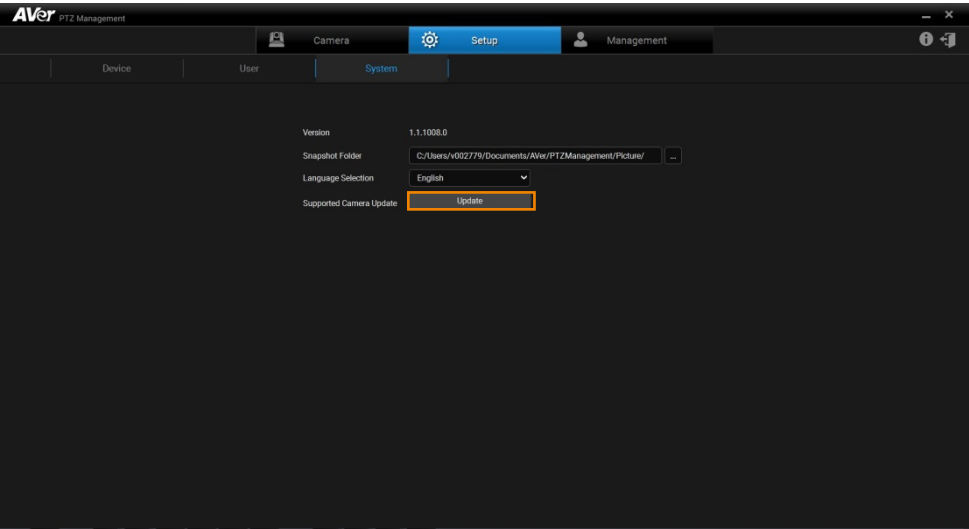
# Change the Camera Name

Select the camera and click **Edit** button to pop up **Edit Device** dialog, enter new name for the camera, and click **Save** button.





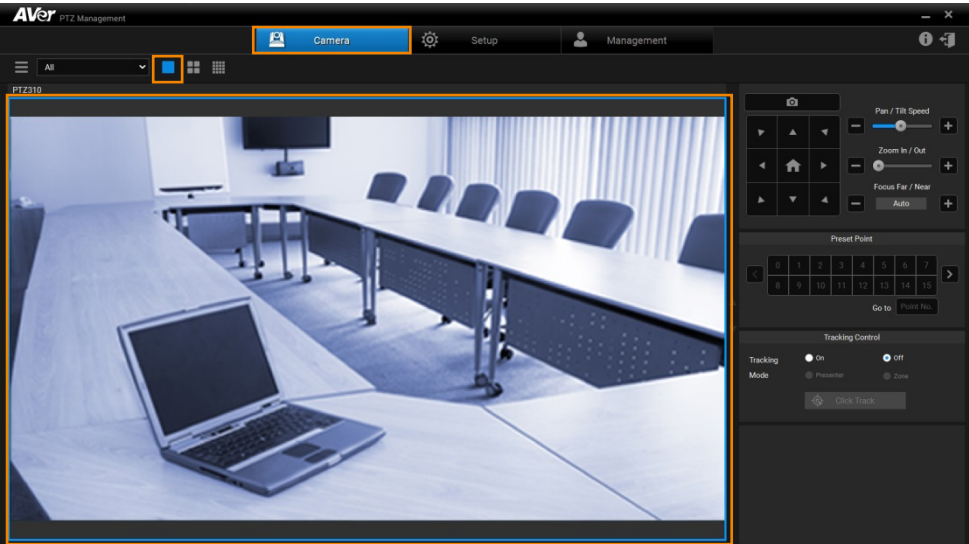
# Configure System

The user can view camera version and configure snapshot folder (refer [Snapshot](#) section) and language (refer [Select System Language](#) section). To update the latest supported camera list, click  button.

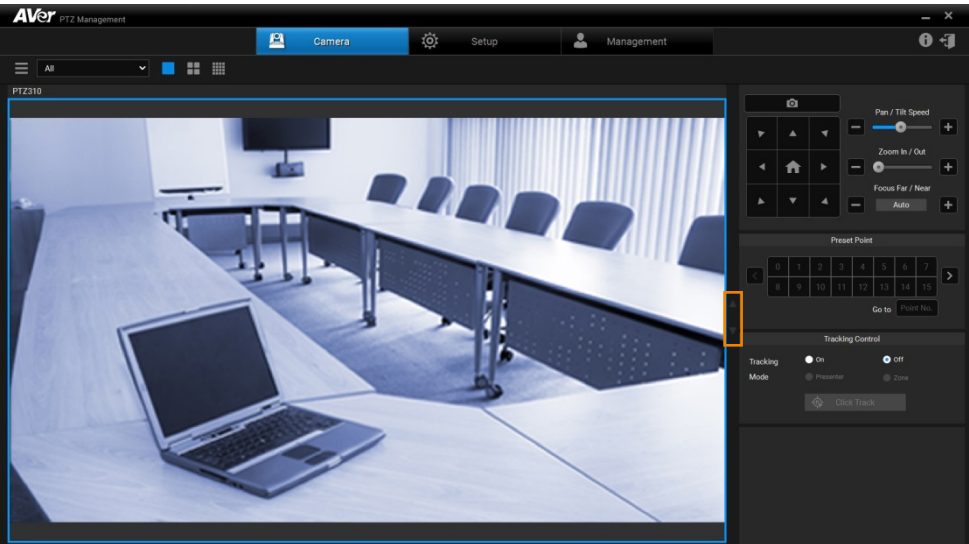


# Set Selection


Click  Camera button and select  full screen button. The camera view is displayed on the screen. Click the camera view and then AVer PTZ Management allows you to configure the camera.

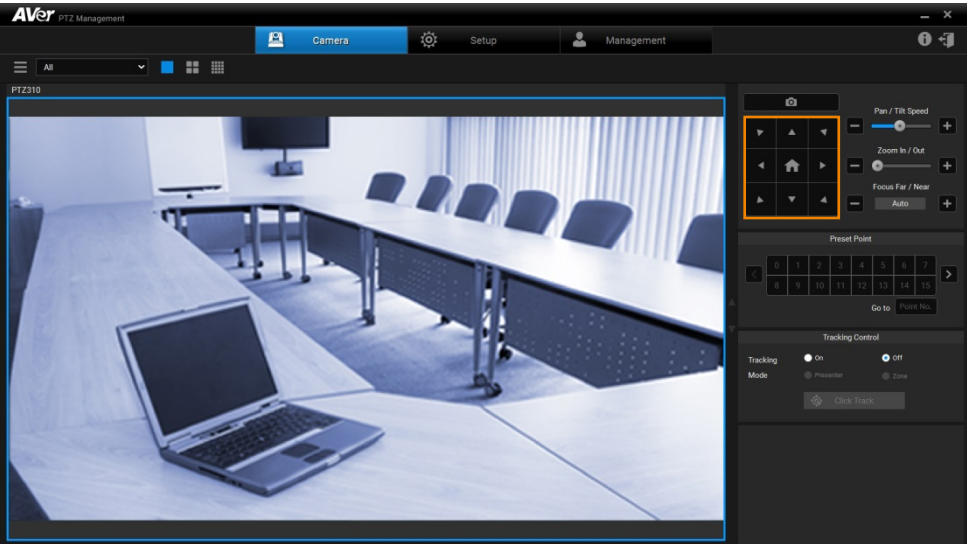


Click the “**paging bar**” to switch the camera view.




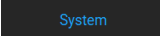
# Pan/Tilt Buttons

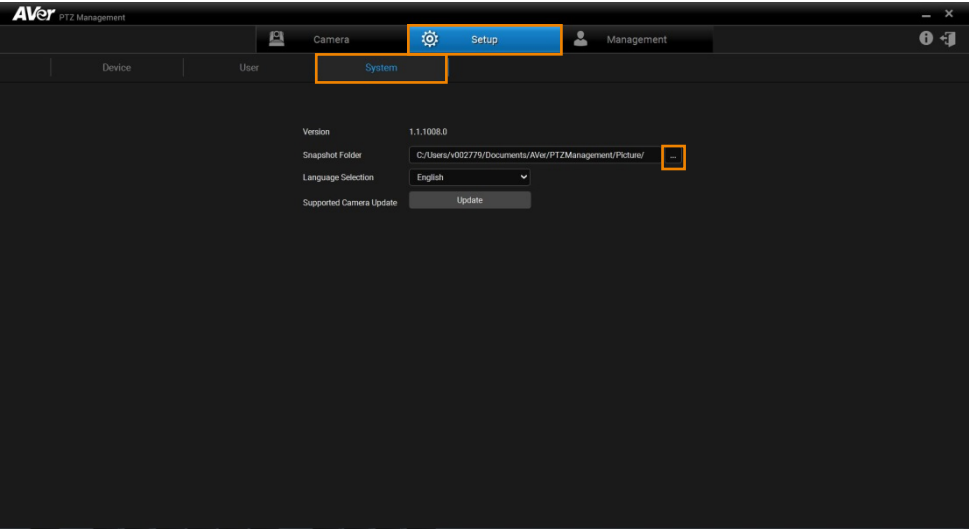
Use the navigation buttons to control the camera directions. Click  button to go back to Home position.







# Snapshot

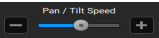
Click  button and select  to specify the folder to save snapshot file.



Click  button and  button to make a snapshot and save it to memory.



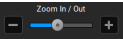
# Pan/Tilt Speed



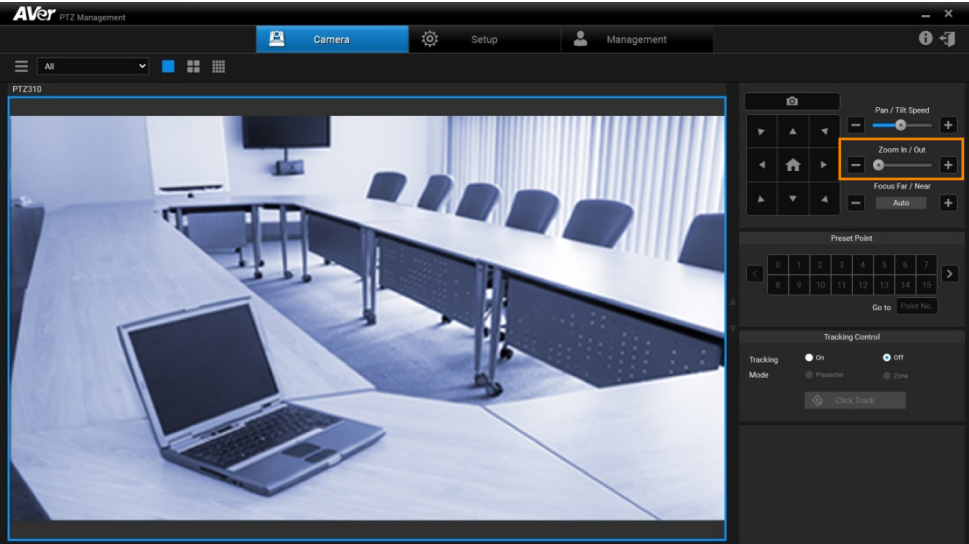
Adjust the moving speed of camera including pan and tilt.



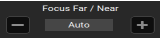
# Zoom In/Zoom Out



To zoom in or zoom out the view of the camera.



# Focus Far/Near



To focus far or near. Also allow user to auto or manual focus.

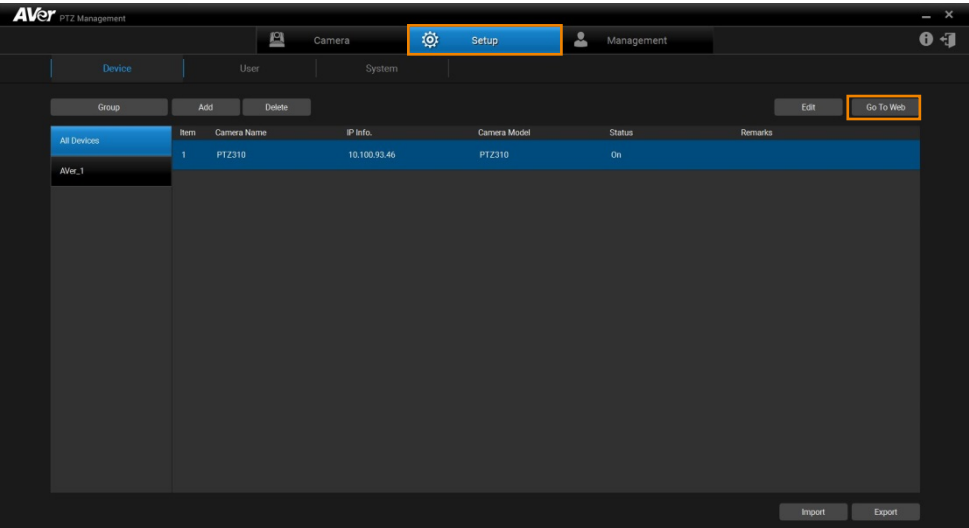
Click **Auto** button to make the camera adjust itself to establish the best focus when shooting.



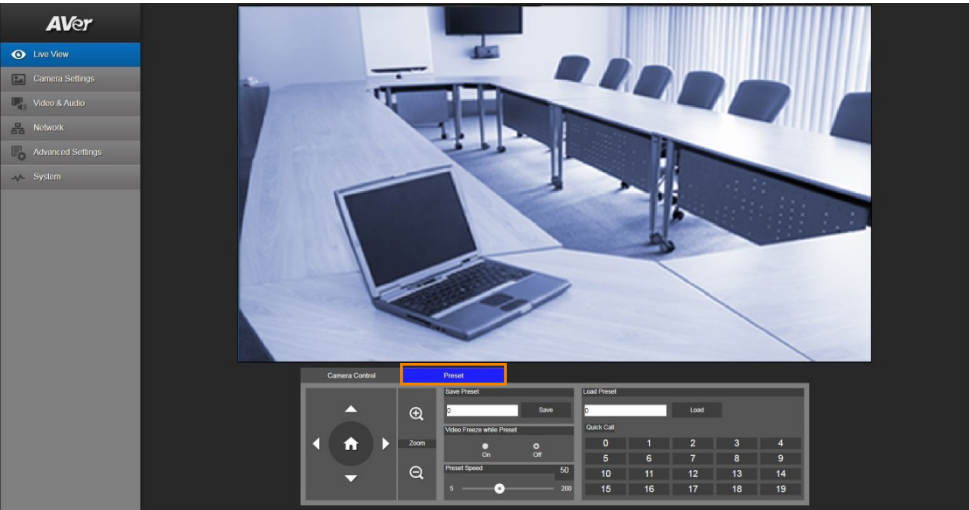
# Preset Point

AVer PTZ Management supports up to 256 preset positions.

To set up preset position, click  Setup button and  button to pop up a setting dialog.



Click  button to start configuration.




To view preset position, click the number. You can also enter preset position number (0~255) in **Go to** field directly for a quickly calling section.

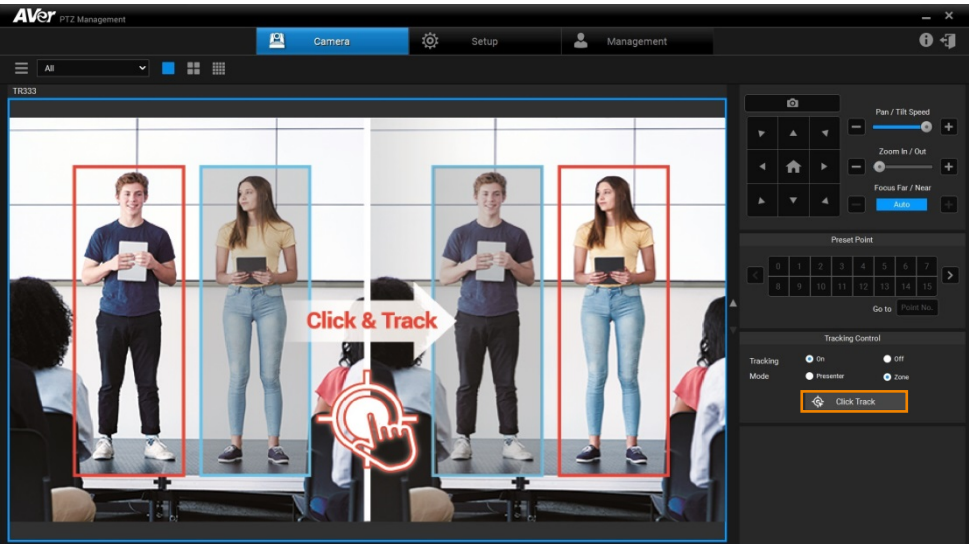


# Tracking Control

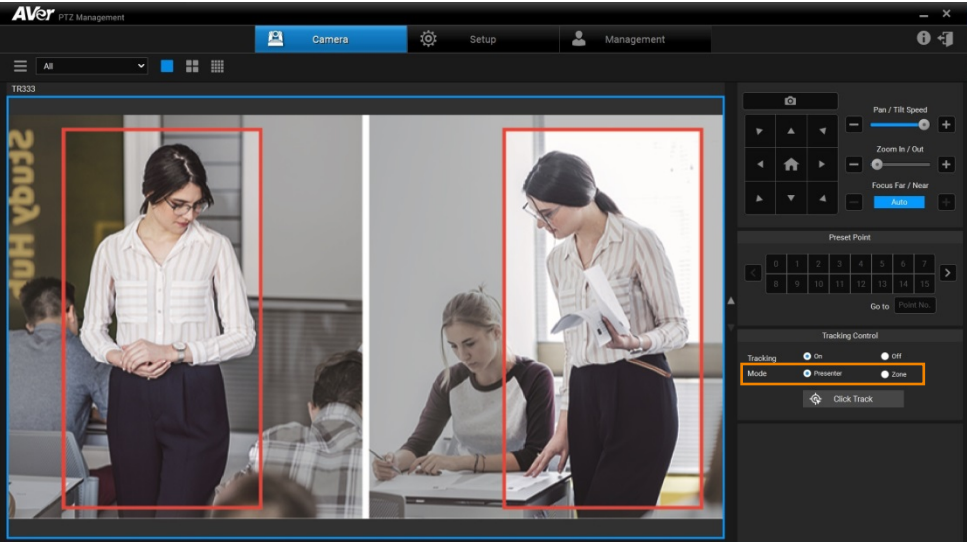
AVer PTZ Management allows user to lock a target and track with lens. Enable **Tracking** feature to lock the target with a red frame. Other tracking targets will be tracked with blue frames.



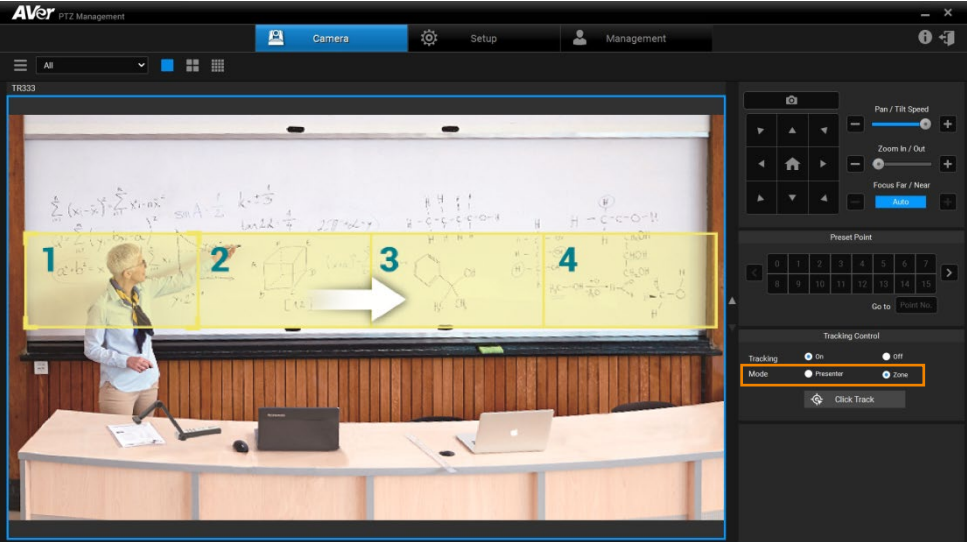
If user wants to select a new target, just simply click  Click Track button and click the target in the camera view.



Select **Presenter** mode to focus on locked aim with less background images.


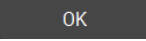


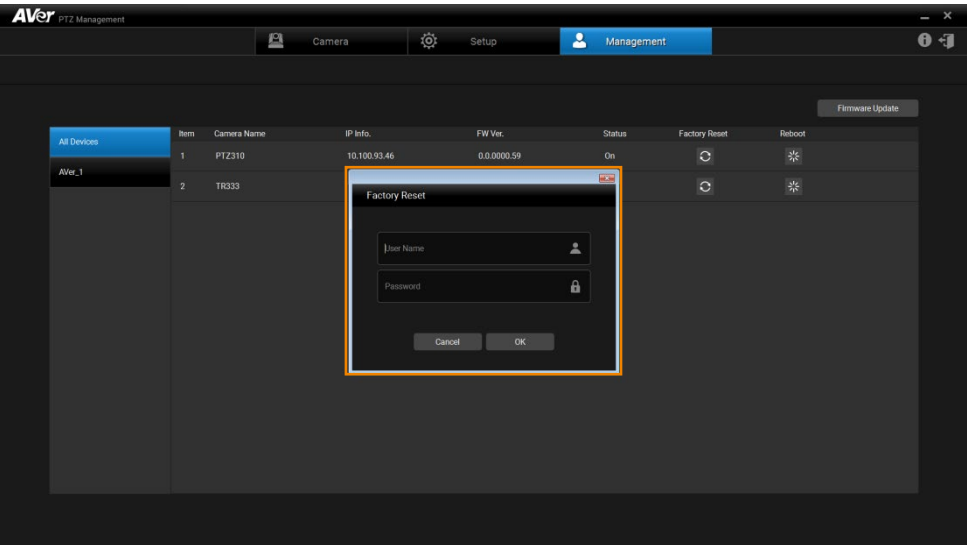
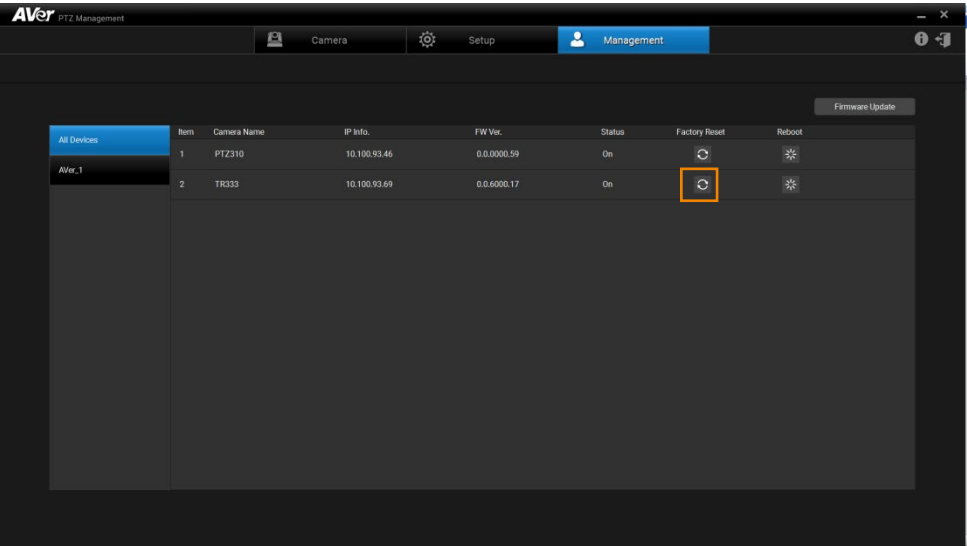
For a wider image with a long distance from the camera lens, select **Zone** mode to see more background images.






# Factory Default

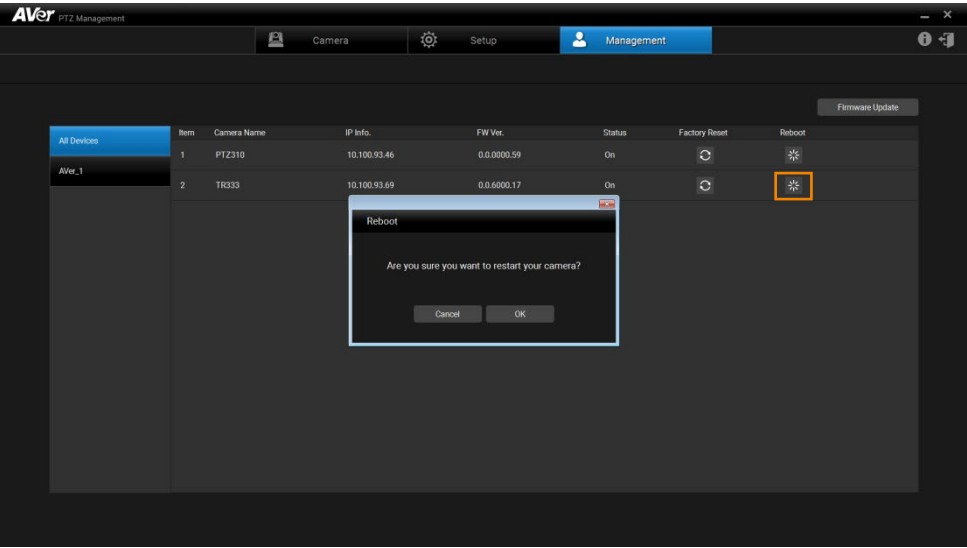
If necessary, reset the camera back to factory default. If AVer PTZ Management lost the connection with the camera, please reconnect with the camera. Click  button to pop up **Factory Reset** dialog. Enter the User Name and Password and click  button to reset all values to factory default values.





# Reboot

The user can restart the camera by clicking  button.

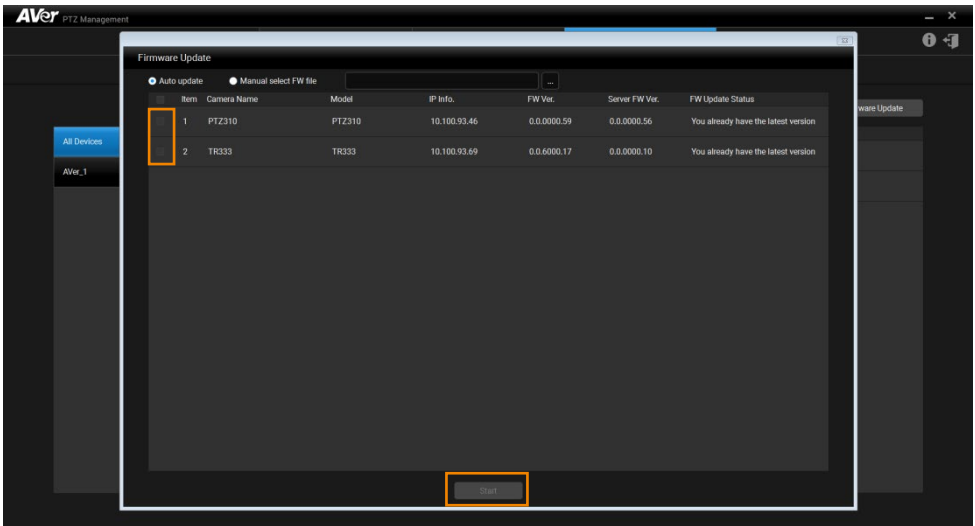


# Firmware Update

Updating the firmware of selected cameras.

While the camera is operating, the software update is not allowed. Please make sure the camera is idling before update.

1. Click **Firmware Update** button to pop up the **Firmware Update** dialog.
2. The user can choose to update firmware automatically or manually (default setting is Auto). Also, firmware of multiple cameras can be updated simultaneously by ticking the cameras and clicking **Start** button.

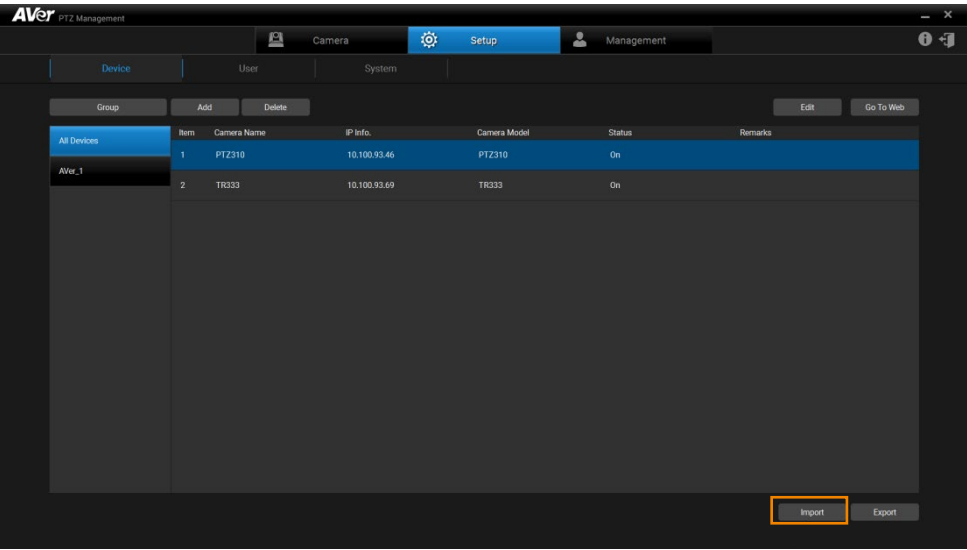


**[Note]** After updating, the camera restarts. The AVer PTZ Management will lose connection with the camera. Please wait for AVer PTZ Management to reconnect to the camera.

# Import Profile

Import camera setting profile, such as camera name, IP address, MAC address, etc., from local hard disk/external storage device.

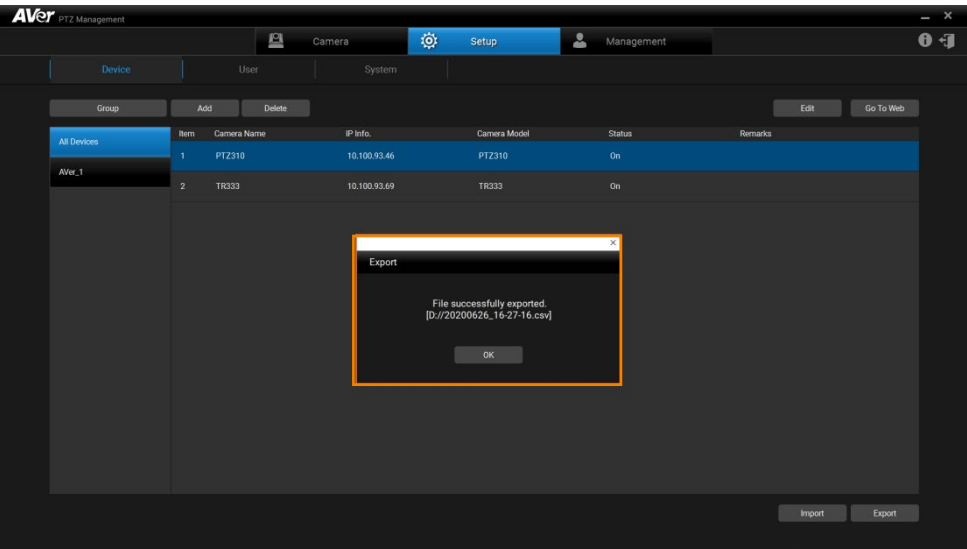
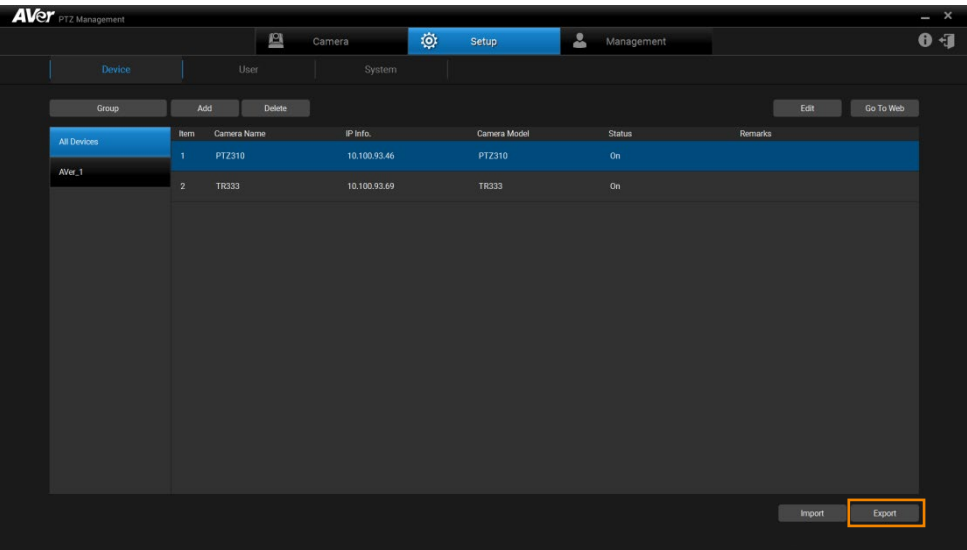
- 1. Select the camera from list.
- 2. Click **Import** button and select the file from hard disk/external saved direction.



# Export Profile

Export the connected camera setting profile to local hard disk/external storage device.

- 1. Select the camera from list.
- 2. Click **Export** button and select the folder to save directly.



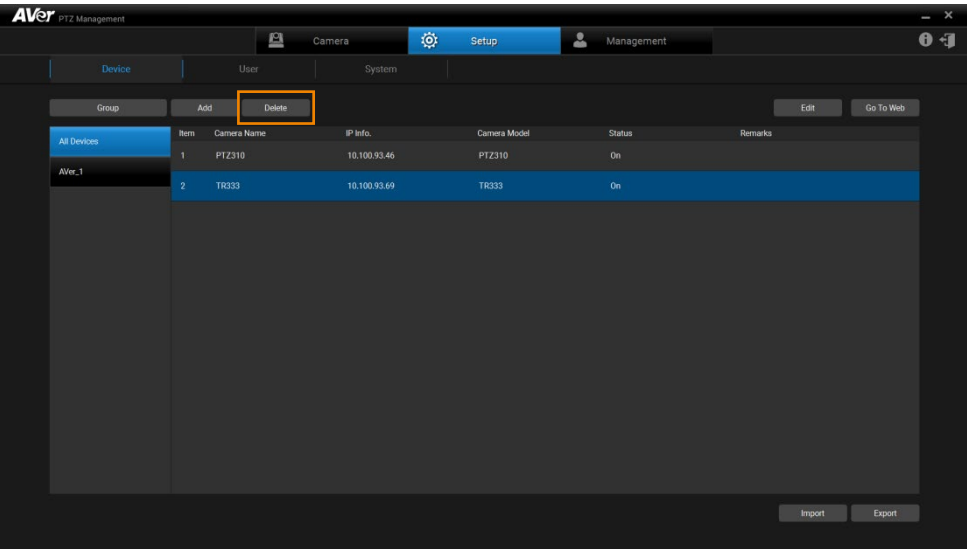
# Delete Camera

To remove the selected cameras from the list.

Select the camera from the list and click 


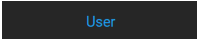
Delete

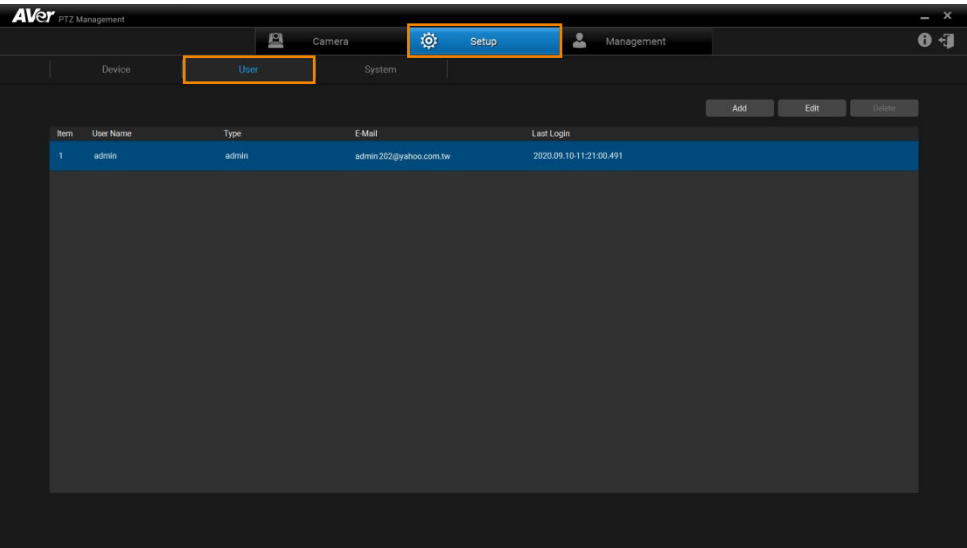
 button to delete the camera.



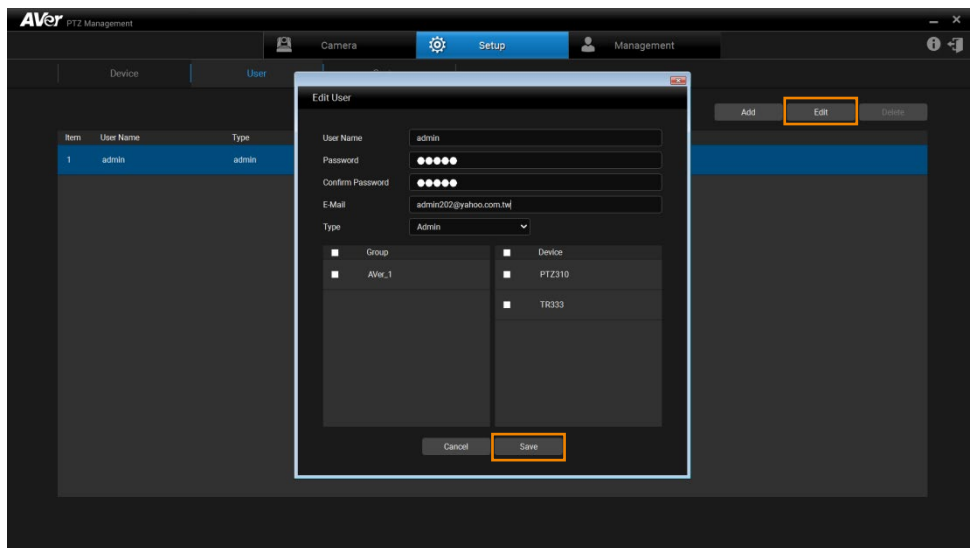
# Edit User

Change the login password of the AVer PTZ Management.


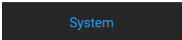
- 1. Click  button and then click  button.
- 2. Select the user that wants to change password.

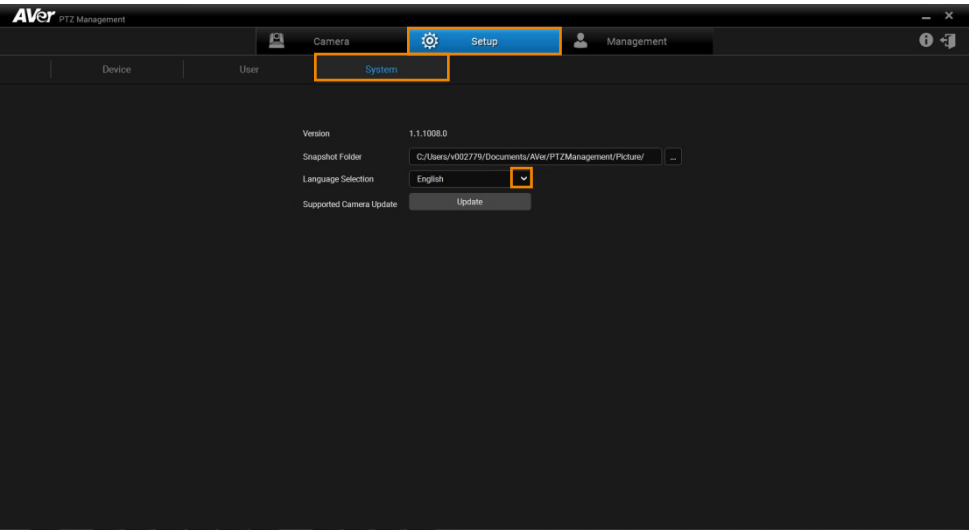


3. Click **Edit** button to pop up **Edit User** dialog. The dialog allows user to change user name, password and E-mail.
4. Click **Save** button to save the changed values.



# Select System Language

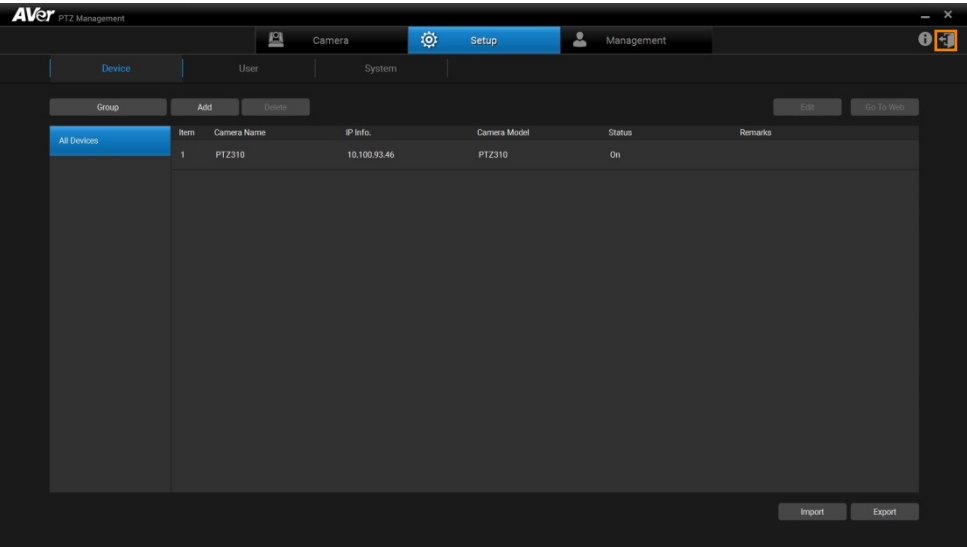
Click  button and select  button. From the drop-down list of Language Selection, user can configure system language. The AVer PTZ Management system languages currently have English and Traditional Chinese. It will display the corresponding language based on user's OS language setting.





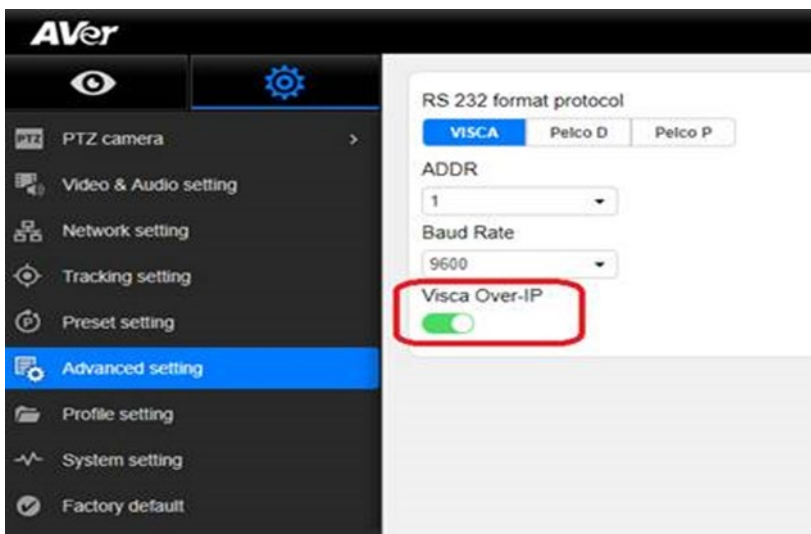
# Logout AVer PTZ Management

Click  to Logout the AVer PTZ Management.



# Troubleshooting

1. How many cameras can I connect?
  - Currently, we can connect up to 128 cameras with AVer PTZ Management.
2. Why is there no camera shown after auto-search?
  - Please make sure AVer PTZ Management and camera are at the same LAN segment.
3. Why is the camera status always in off status?
  - Please make sure AVer PTZ Management and camera are at the same LAN segment.
  - For the PTC500S series models, please check **VISCA Over-IP** is enabled.



- If AVer PTZ Management and camera are not at the same LAN segment, please check UDP port is not blocked by the firewall.
  - ✓ VISCA Control port: 52381
  - ✓ RTSP port: 554