



Precision Plumbing Products
"Specify with Confidence - Install with Pride"

LEAD FREE

PO-500 PRESSURE DROP ACTIVATED TRAP PRIMER SUBMITTAL

www.pppinc.net

The PO-500 Oregon #1 automatic pressure drop activated trap primer valve will prime up to 4 floors drains with our patented distribution DU-U unit.

This valve requires no adjustment and will compensate for pressure fluctuations without going out of adjustment with automatic activation.

System operating range is 20 psi minimum to 80 psi (138 to 552 kpa) maximum.

The valve requires a 10 psi (70 kpa) pressure drop across the valve to activate and will deliver a metered amount of water to the floor drain. Trap primer is to be connect to a cold water supply only.

Constructed Composite body, Sarlink 4145B diaphragm, #60 stainless steel mesh screen.

PROJECT SUBMITTAL MODEL # _____

Project: _____

Contractor: _____

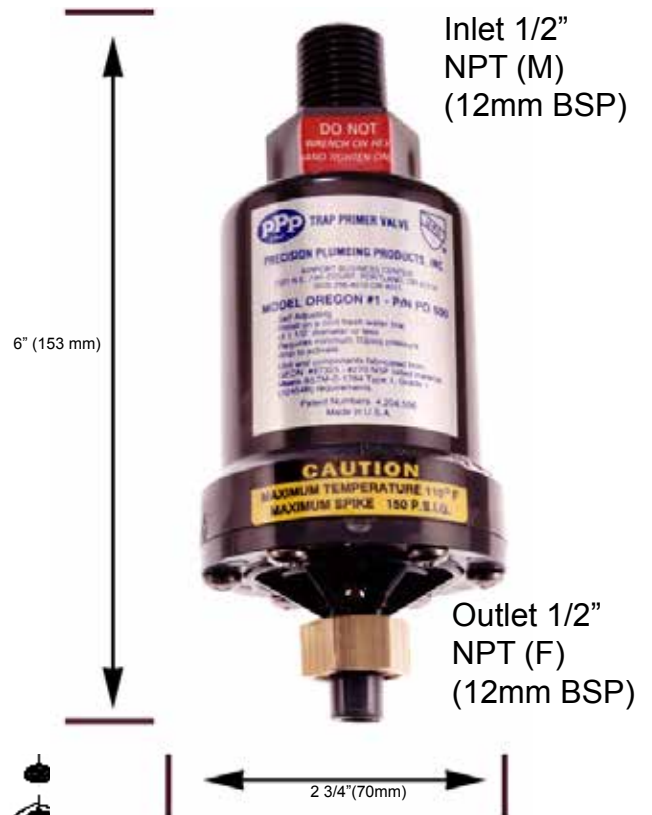
Engineer: _____

Date Submitted: _____

Prepared By: _____

NO Adjustment Required!

PART NO: PO-500



- "OREGON #1"**
 Floor Drain Trap Primer Valve Components
SPECIFICATIONS
 Body, Check Valve Retainer Plate,
 Float (Polypropylene), cover
 Material Specification
 Geon PVC M-1000 Type 1, Grade 1 molding
 compound. NSF listed material #270
 Check Valve Ball
 #316 - Stainless Steel
 Check Valve Ball Retainer
 Monel Metal
 Cover Screws (6)
 5/8" x 10/24" Stainless Steel
 Slip Joint Nut - 1/2" NPT
 Chrome Plated Brass
 Slip Joint Nut Washer - Neoprene Strainer
 40 Mesh - Stainless Steel Wire Cloth

INSTALLATION REQUIREMENTS

This valve is designed to be installed on 1/2" to 1 1/2" cold water line, feeding a flush valve or other open and closing valve supply line that is frequently used.

Trap Primer valve makeup line to floor drain is recommended to be a minimum of 12" off the finished floor before a 90° elbow can be installed.

The furthest recommended distance of makeup line is 20' to the floor drain.

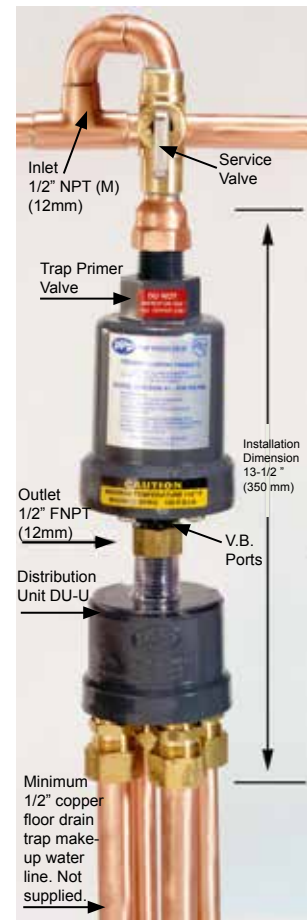
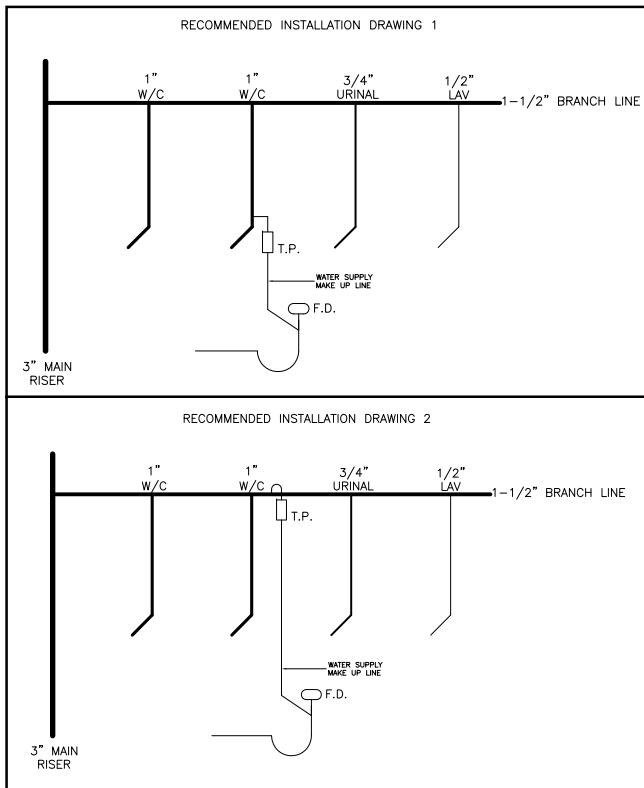
Trap primer make up line must have continuous slope to the floor drain (consult local code requirements).

Install with a shut off valve for servicing on the inlet side and a union connection on the outlet side.

The valve must be installed level.

If using the distribution unit the clear plastic cover must be used.

Do not subject the valve to rough in pressure test.



NOTE: Consult plumbing inspector prior to installing distribution units.

Precision Plumbing Products

Division of JL Industries, Inc.

802 SE 199th Ave
Portland, Oregon 97233

T (503) 256-4010
F (503) 253-8165

www.pppinc.net



JL Industries, Inc.

