

TRANSFORM THE CAMPUS NETWORK EXPERIENCE



Today's students require a great network experience more than ever before. Whether they are on campus or in a distance learning environment, students expect to connect with their teachers, collaborate in study groups, and securely access online resources over a fast and reliable network. The transformation of the underlying network is critical to every stage of education. The AI-driven network leverages rich device and network insights from client to cloud to deliver a predictable and measurable campus network with unparalleled user experience for the next decade.

EVOLVED CAMPUS NETWORKING

- Best-in-class Wi-Fi experience for students, faculty, and visitors
- Superior network access for all students to support online learning and testing
- Minimized class disruptions with automated identification and issue resolution through the Self-Driving Network™
- Location services to enable on-campus turn-by-turn navigation, asset tracking, and proximity tracing
- IT initiatives aligned with the institute or school's mission and strategic plan

NETWORK INNOVATION OUTCOMES

- Enhance students' learning experience with a secure, pervasive, and reliable network
- Deliver consistently excellent indoor/outdoor network connectivity for campus users
- Enable high accuracy (1-3 meter) location services for campus navigation, push notification, and contact tracing
- Prepare the campus with a strong network foundation for future innovations

For IT and Network Teams

- Quickly implement new services and applications to enhance the campus network experience
- Simplify cloud network infrastructure with microservices and enhanced security
- Streamline troubleshooting and automate network operations with AIOps
- Reduce trouble tickets with AI-driven support

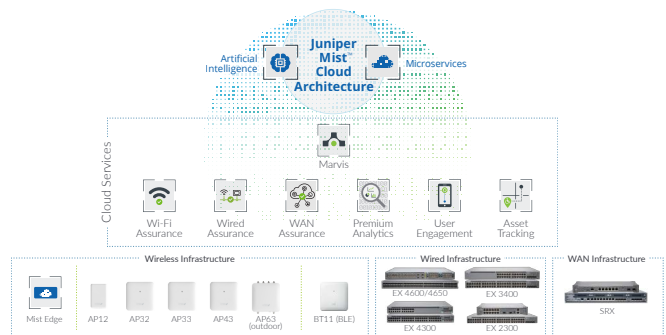
For Business Teams

- Enable digital classroom, distance learning, and remote access with secure and scalable networks
- Ensure a safe campus with virtual BLE (vBLE)-based contact tracing services
- Provide security for data, applications, and end users whether they are on campus or at home
- Optimize resource allocation, improve workforce efficiency, and reduce campus operating costs

AI-DRIVEN EDUCATION SOLUTION

Juniper, driven by Mist AI™, delivers:

- Superior experiences across a variety of domains
- Simplified networks using AIOps
- A robust portfolio of cloud-ready switches, APs, and SD-WAN edge devices
- The Self-Driving Network with proactive troubleshooting issue resolution
- A microservices cloud natively integrated with AI and data science tools, bringing agility to support influx of devices
- Strategic business value from location services without needing overlay software or physical beacons
- 100% open and programmable APIs for full automation and integration with third-party workflows



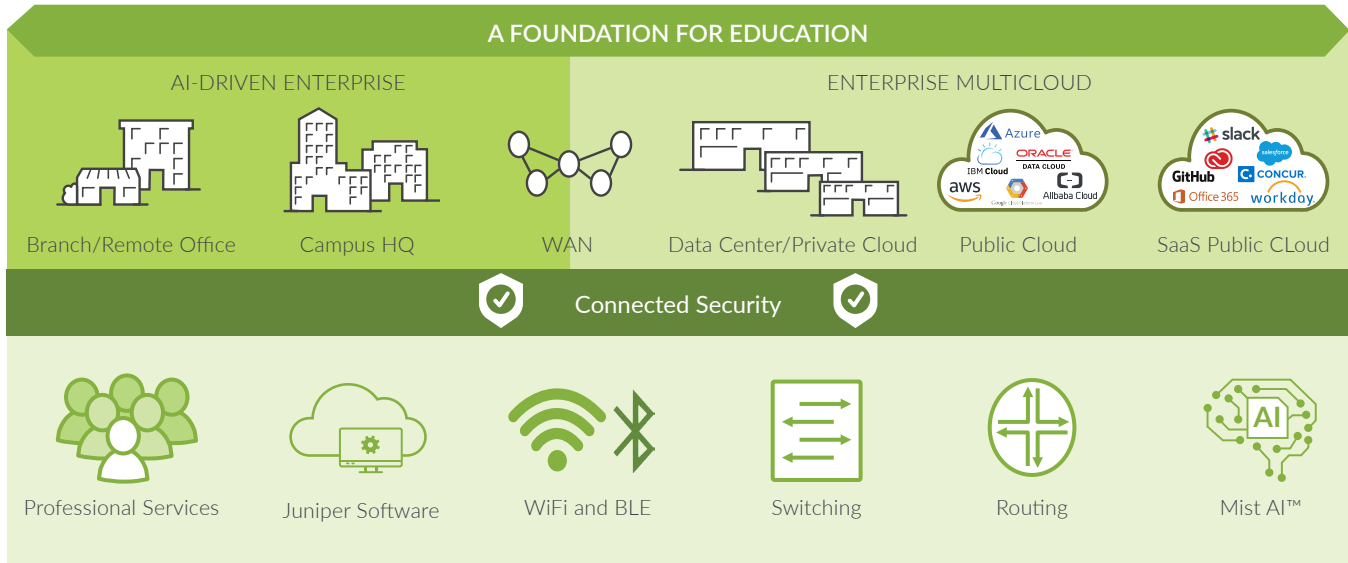
HIGHER EDUCATION




PRIMARY EDUCATION





Juniper, driven by Mist AI, is the first vendor to deliver a network experience that is predictable, reliable, and measurable along with added benefits of wayfinding, asset visibility, and contact tracing. Setup is easy, with automated operations that let you focus on boosting educational outcomes instead of manual troubleshooting.





JUNIPER MIST CLOUD SERVICES QUICK VIEW


- 
WI-FI ASSURANCE: Make Wi-Fi predictable, reliable, and measurable. Automate operations, save time and money, and get unprecedented visibility into the Wi-Fi user experience.


- 
WIRED ASSURANCE: Deliver better experiences for connected devices with AI-powered automation and service level. Leverage rich Junos telemetry from EX Switches to enable simpler operations, shorter mean time to repair, and improved visibility.

- 
WAN ASSURANCE: Bring AI-driven insights for the WAN and branch into your Juniper secure SD-WAN solution. Shift the focus from network and application behavior to actual user experiences.

- 
MARVIS VIRTUAL NETWORK ASSISTANT: Mist AI comes to life with the industry's first virtual network assistant. Marvis helps IT teams get to answers with streamlined operations and simplified troubleshooting—helping to boost user experiences.

- 
PREMIUM ANALYTICS: Get network visibility and business insights to drive your digital transformation journey. Really understand business operations while overcoming the complex challenges associated with the influx of big data from network and client endpoints.

- 
USER ENGAGEMENT: Use patented vBLE antenna array technology and Mist AI to drive down deployment costs and improve the accuracy of indoor location services, from wayfinding to location-based proximity notifications.

- 
ASSET VISIBILITY: Make it easy to find critical assets and resources, with detailed location analytics at your fingertips. Our vBLE technology leverages the same infrastructure for engaging with mobile users, reducing the need for overlay sensors or physical beacons.

INDUSTRY RECOGNITION OF JUNIPER

Gartner¹

- [Leader in Gartner 2020 Wired and Wireless LAN Access Infrastructure](#)
- [Leader in Gartner 2020 Magic Quadrant for Data Center and Cloud Networking](#)
- [Gartner Peer Insights 2020 Customers' Choice for Wired and Wireless LAN Access Infrastructure²](#)
- [Visionary in Gartner 2020 Magic Quadrant for WAN Edge Infrastructure](#)
- [Challenger in Gartner 2020 Enterprise Network Firewalls](#)

Forrester³

- [Leader in The Forrester Wave: Open, Programmable Switches for a Businesswide SDN, Q3 2020](#)

¹ Gartner does not endorse any vendor, product or service depicted in its research publications, and does not advise technology users to select only those vendors with the highest ratings or other designation. Gartner research publications consist of the opinions of Gartner's research organization and should not be construed as statements of fact. Gartner disclaims all warranties, expressed or implied, with respect to this research, including any warranties of merchantability or fitness for a particular purpose.

² Gartner Peer Insights Customers' Choice constitute the subjective opinions of individual end-user reviews, ratings, and data applied against a documented methodology; they neither represent the views of, nor constitute an endorsement by, Gartner or its affiliates.

³ The Forrester [Industry] Wave™ is copyrighted by Forrester Research, Inc. Forrester and Forrester Wave™ are trademarks of Forrester Research, Inc. The Forrester [Industry] Wave™ is a graphical representation of Forrester's call on a market. Forrester does not endorse any company, product, or service depicted in the Forrester [Industry] Wave™. Information is based on best available resources. Opinions reflect judgment at the time and are subject to change.