

Quick Instruction for ERISAN AnyCast

Any questions, please email: support@erisanhome.com



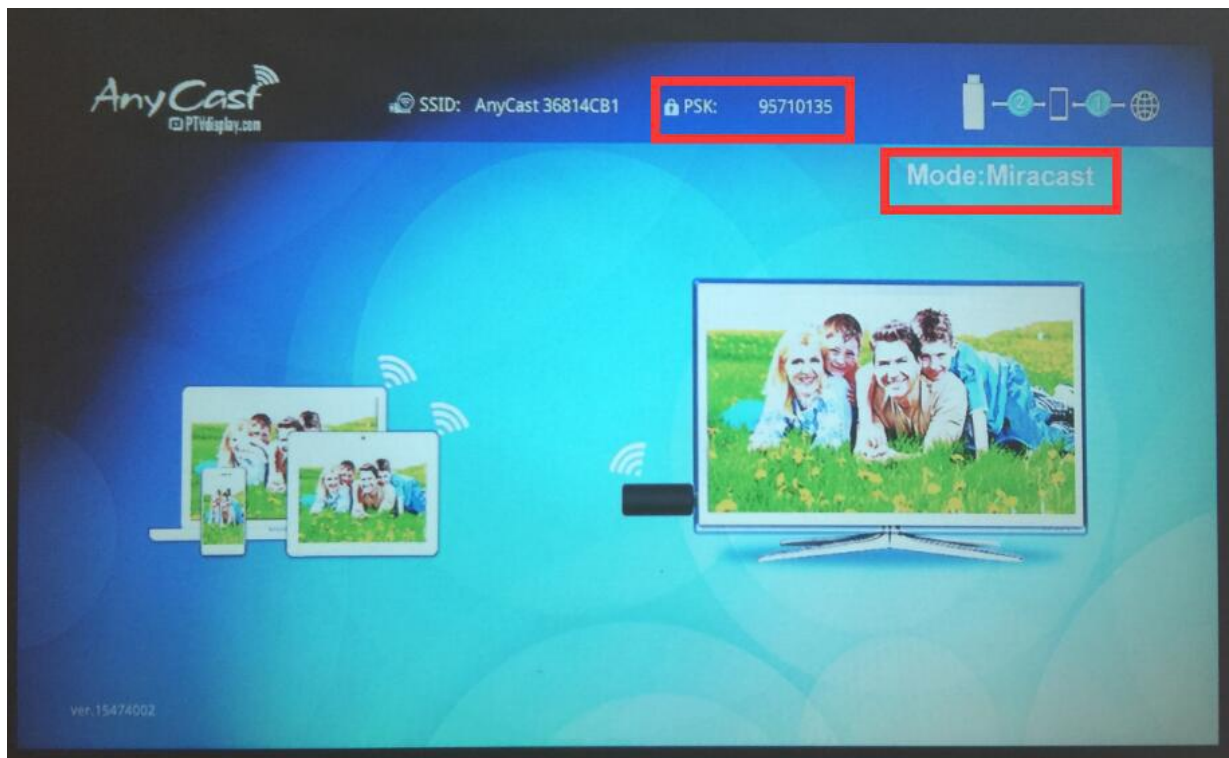
Fn Button

Apple, Android mode switch button

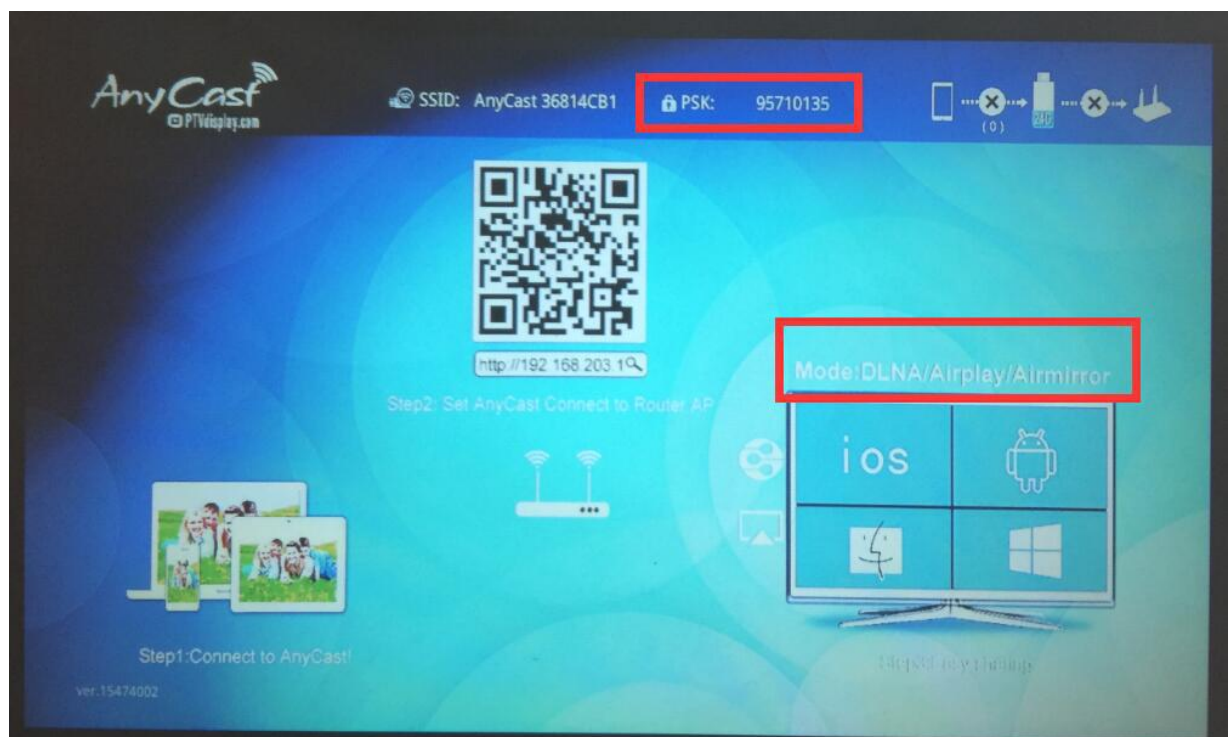
The EZM2 has two modes for Wi-Fi connection, one is the Miracast for Android, the other is the DLNA for iOS (like iPhone, iPad or Macbook)

Please press the "Fn" button to enter in the correct mode.

Miracast: for Android (**PSK : xxxxxxxx, the numbers "xxxxxxx" is the password**)



DLNA: for iOS devices. (**PSK : xxxxxxxx, the numbers "xxxxxxx" is the password**)

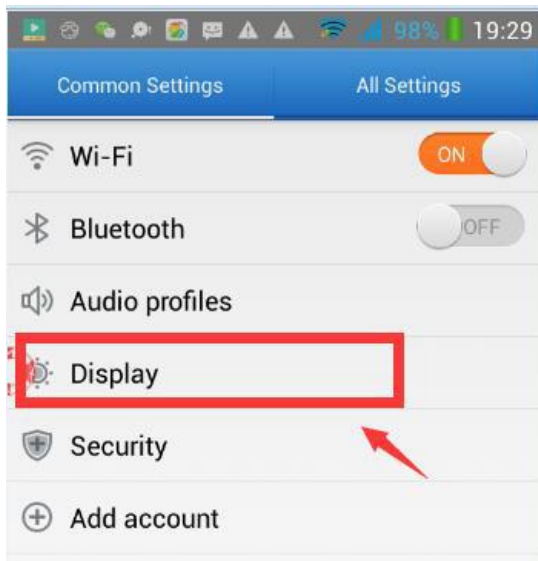


Part 1. Instruction For android device(Press the FN button to enter in the Miracast mode):

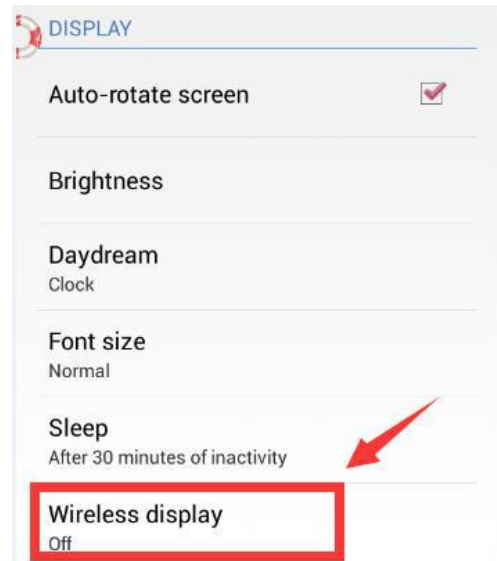
Please plug the EZM2 Wi-Fi device in the HDMI port & 5V USB ports of the projector/TV, then power on the projector/TV and select the input signal as HDMI, it will show the booting screen.

Notice: Android device Must support Miracast, please check the settings of android phone/tablet to use "Smart View" / "Wireless Display" / "Screen Mirroring" to connect.

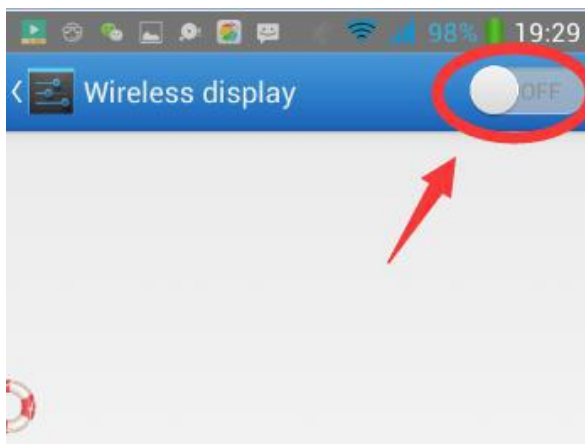
Not sure? Please consult the device manufacturer for assistance.



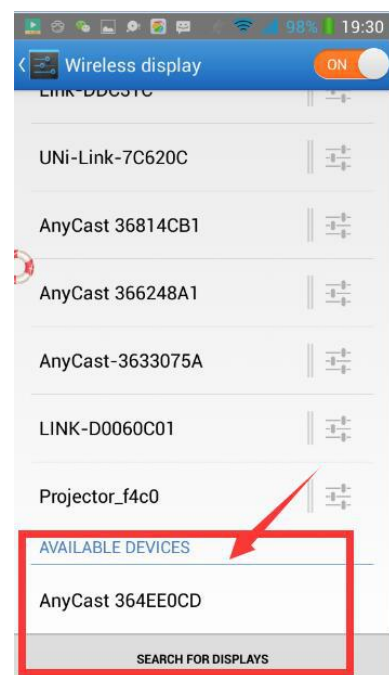
(1)



(2)



(3)



(4)

Part 2. Instruction For iOS device(Press the FN button to enter in the DLNA mode):

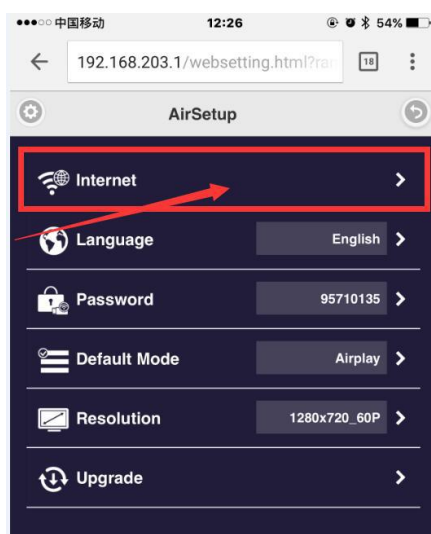
Please plug the EZM2 Wi-Fi device in the HDMI port & 5V USB ports of the projector/TV, then power on the projector/TV and select the input signal as HDMI, it will show the booting screen.

Mode: DLNA, PSK : xxxxxxxx, the numbers "xxxxxxx" is the password



(1)

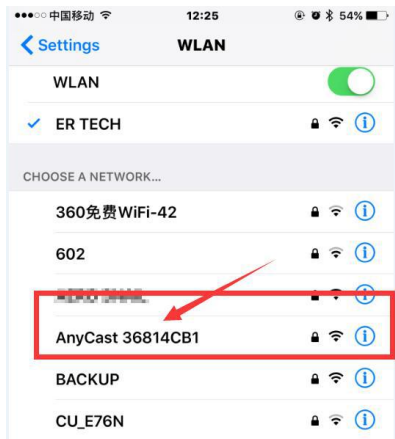
Go to Setting of your iPhone/iPad, In the WLAN, please connect to the WiFi named like "Anycast-xxxxxx", input the Password (**PSK : xxxxxxxx, the numbers "xxxxxxx" is the password**) .



(2)

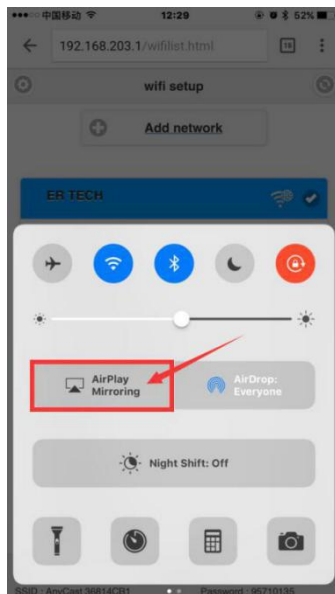
Open the web browser of your iPhone/iPad, like Safari or Chrome, input the IP: "192.168.203.1", please click the first option "Internet", then you can find your home's WiFi and please connect to it.

Please wait about 3-5 seconds after you input the Password of your WiFi password.



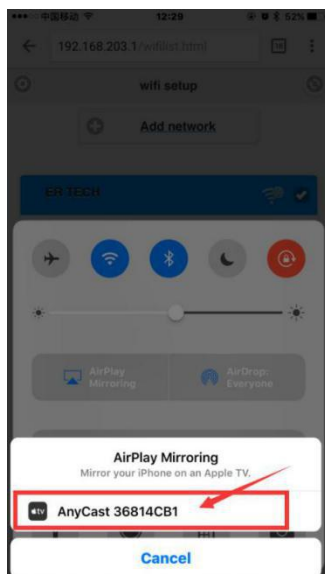
(3)

Go back to Setting of your iPhone/iPad, In the WLAN, please click the WiFi named like "Anycast-xxxxxx" again.



(4)

Slide upward from the bottom of iPhone/iPad to display the hidden menu, please click "Airplay Mirroring".



(5)

Then please click "Anycast-xxxxxx".

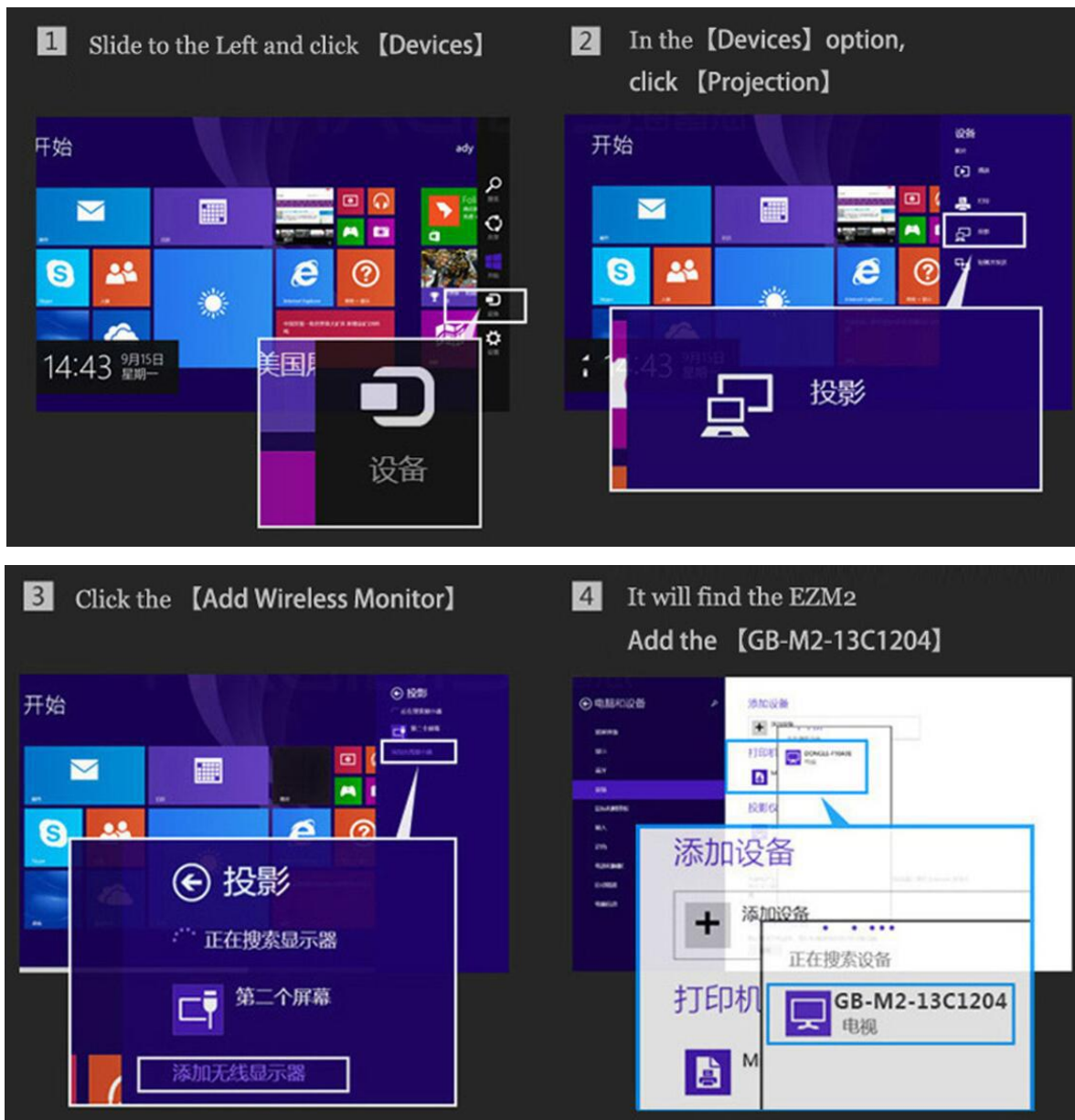
Part 3. Instruction For Windows(Press the FN button to enter in the Miracast mode)

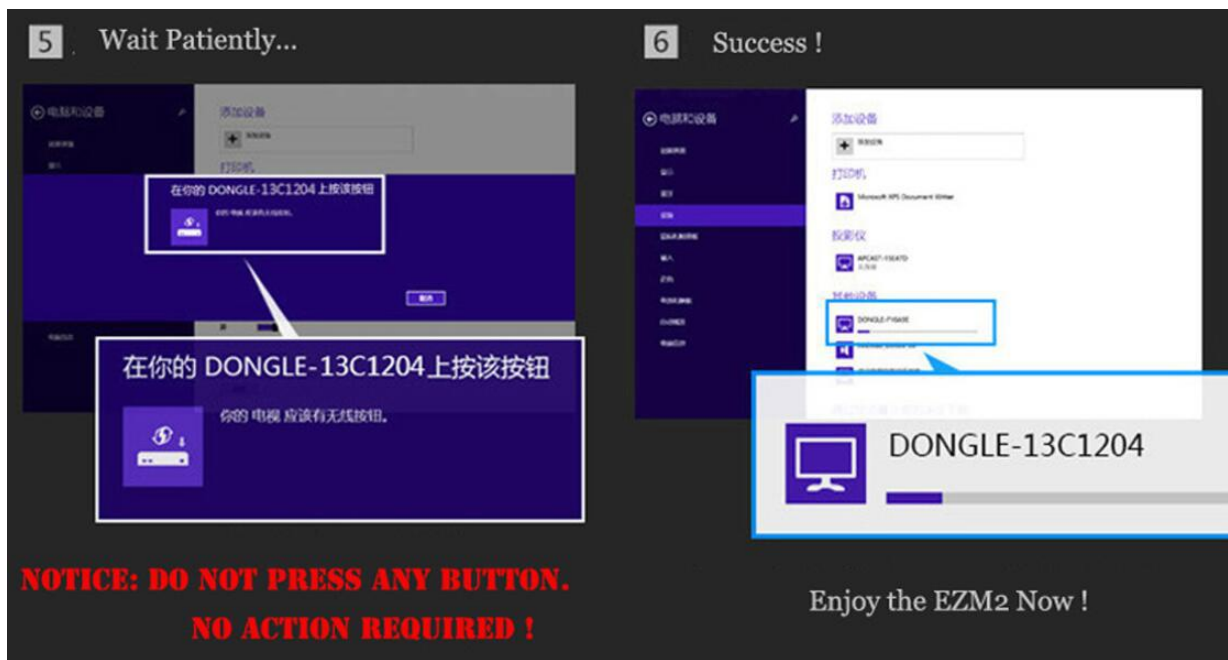
Notice: Only support Windows® 10 Operating system with a 4th Generation (or newer) processor.

Does Not support Windows 7 and Windows 8.

For Windows, Please check the Compatibility, GO to www.intel.com & Search 000021494

If Windows PC/Laptop/Tablet does not have the Inter WIDI feature, please use the third-party Software "AirParrot" to connect.





You can set the Default Booting Mode in AirSetup, here is how:

1. Press Fn button to enter in DLNA mode.
2. In Wi-Fi of Android/iOS, connect to "Anycast-xxxxxx", (PSK : xxxxxxxx, the numbers "xxxxxxx" is the password) .
3. After connected, open the web browser of your iOS/Android (like Safari or Chrome), input the IP: "192.168.203.1" , you can set the default booting mode by clicking the option "Default Mode".
4. Default Booting Mode can be switched to selected.

Any questions, please email: support@erisanhome.com