



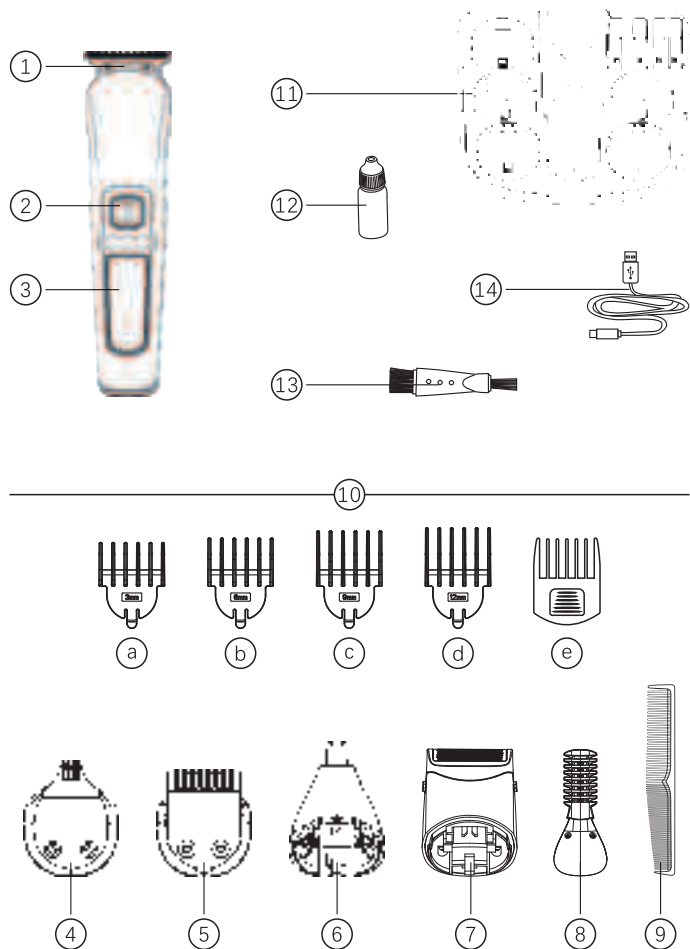
MULTI GROOMING KIT BEARD TRIMMER

All in 1 SUPER WASHABLE GROOMING KIT

FK-8688T



INSTRUCTION MANUAL



— 01 —

We aim to provide you with cost-effective products and services. This product is specially designed for families, and it can be used to trim children's hair as well as adult's. But please do not use it to cut artificial hair or otherwise.

Thank you for purchasing our product. We hope you enjoy your new appliance! Please read the manual carefully to familiarise yourself with your new appliance before using it, and save these instructions for further reference.

PRECAUTIONS

◆ Please use this appliance only for the intended purposes described in this manual.

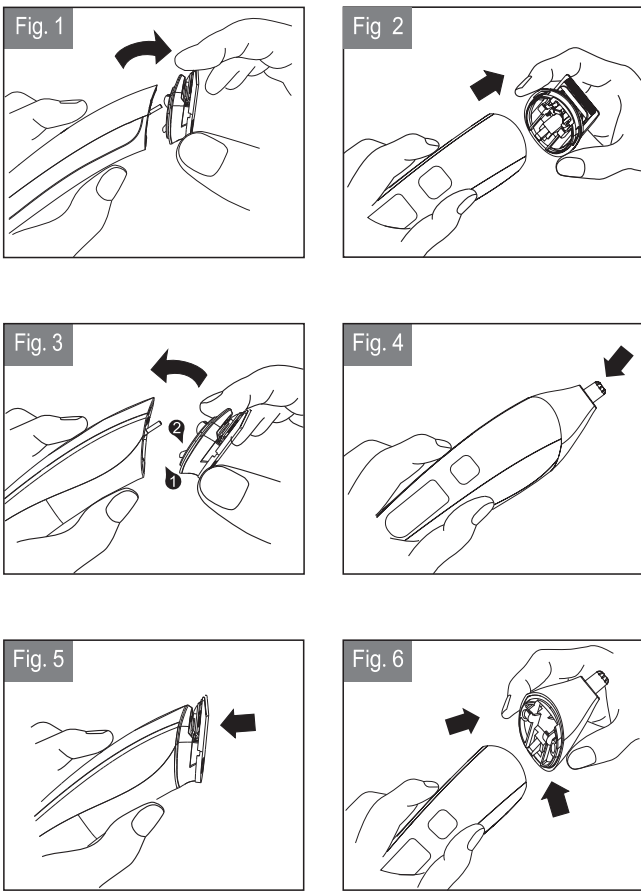
DESCRIPTION

1. Full-size trimmer
2. On/ Off switch
3. Intelligent digital display screen
4. Design trimmer
5. Precision trimmer
6. Nose/ ear trimmer
7. Micro shaver
8. Body trimmer
9. Comb
10. Five guide combs (a to e)
11. Stand base
12. Lubricating oil
13. Cleaning brush
14. USB cable (for 5A 1A charger)

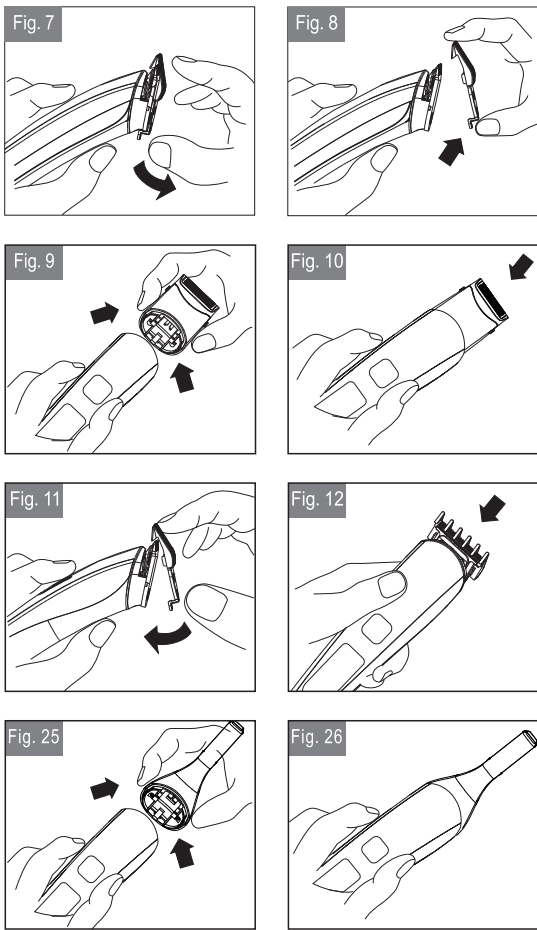
SPECIFICATION

Product: MULTI GROOMING KIT BEARD KIMMER
Model: FK- 8688T
Battery type: Lithium battery
Charging time: 1.5 hours
Battery life: 90 minutes
Rated voltage: 110 - 240V
Rated frequency: 50 / 60 Hz
Rated power: 5W
Production date: please see it on the appliance
Standards: GB4706.1-2005 GB4706.9- 2008

— 02 —



— 03 —



— 04 —

GETTING STARTED

- When using the clipper for the first time, please charge it for 2 hours to activate the battery.
- Make sure the product is turned off before charging.
- Connect one end of the charging adapter to the appliance, and the other end to the USD port. The charging indicator will be on, indicating successful connection.
- The clipper cannot be charged for too long. If you don't use it for a long time (2-3 months), please unplug the power cord. Please fully charge your clipper before using it.
- To extend battery life, charge them at least once every six months after the battery is fully discharged.

INSTALLATION AND REMOVAL OF THE ATTACHMENTS

- How to use
- When replacing an attachment, first place it in the right position with your fingers, and then align the clipper with the slot of the attachment and snap it on (Fig. 3-4).
- Please remove the cutting heads according to the illustrations (Fig. 1-2)
- Align the slots on the comb and the clipper, snap the precision trimming comb on to install it (Fig. 3,5).
- There are four guide combs with specification as follows.

■ Combs for full-size trimmer

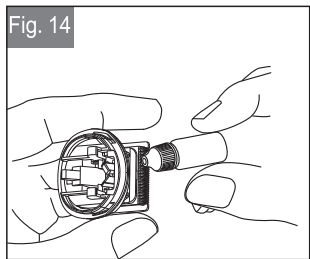
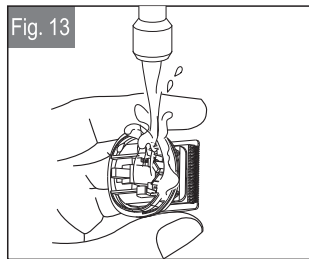
No.	Grade	Length (mm)
1	1	3
2	2	6
3	3	9
4	4	12

■ Ways to match combs for the precision trimming blade

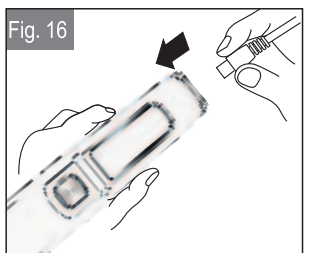
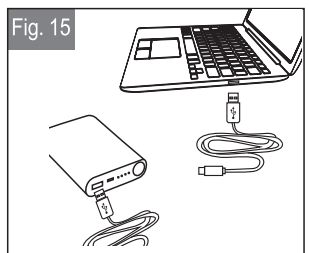
No.	Grade	Length (mm)
1	1	1
2	2	2
3	3	3
4	4	4

— 05 —

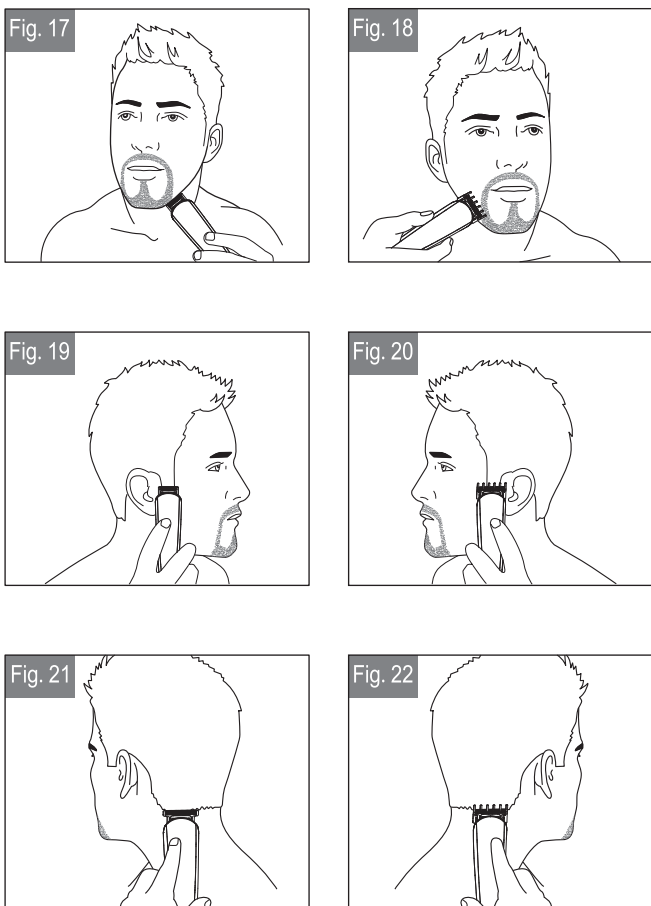
- Remove the guide comb from the back to the front as shown in Fig. 7-8.
- Press the attachment downwards to separate it from the appliance (Fig. 9).
- Align the attachment with the slot on the appliance and snap it on (Fig. 10).
- Align the attachment comb with the front slot and snap it on in the direction of the arrow to install the clipper guide comb (Fig. 11).
- Different guide combs can be selected according to different needs (Fig. 12).
- Way to clean the appliance
- Remove the cutting heads from the appliance before cleaning them in the water as shown in the Fig. 13. And then clean the internal parts with a cleaning brush to remove dust and apply lubricant (Fig. 13-14).



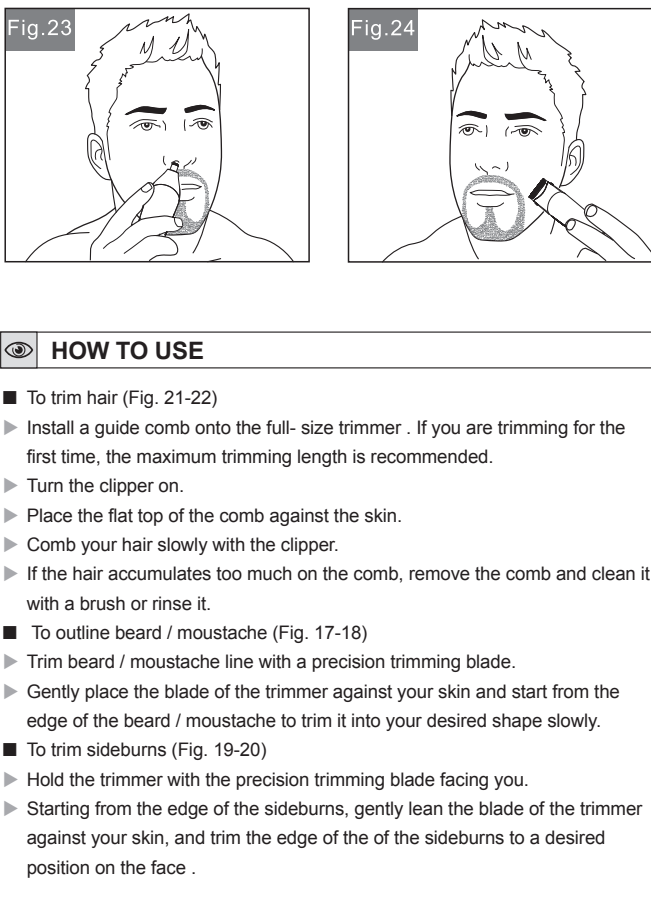
- Ways to charge
- Charging through USB port is available, and it is very convenient (Fig. 15).
- Insert the plug of the charger directly into the appliance (Fig. 16).



— 06 —



— 07 —



— 08 —

■ To use a micro shaver (Fig. 24)

- Install the micro shaver.
- Hold the appliance with the micro shaver gently against your face at an angle of 45 degrees.
- Shave with short and controlled movements. Stretch your skin with your free hand, which makes the hair stand upright to make it easier to shave.
- Note: the micro shaver is designed to deal with the details surrounding the beard / sideburns.
- It's not designed to be clean-shaven.
- For better shaving effect, it is recommended to use professional shaving tools.

■ Nose or ear trimmer (Fig. 23)

- Install the nose trimmer.
- Gently insert the trimmer into the nostrils or ears.
- Gently move the trimmer in and out of the nostrils or ears, while rotating.
- Avoid inserting the blade more than 6 mm into the nostrils or ears.
- Attach and remove combs from the clipper
- Note: make sure the clipper is turned off before replacing the combs.
- Tips for desired results
- Keep the beard, moustache and sideburns dry, while trimming them.
- Avoid using lotion before using the clipper. And comb your hair in the direction it grows.

— 09 —

CLEANING AND MAINTENANCE

Clean and maintain your clipper.

- After use
- 1 Turn off the clipper.
- 2 Gently brush off the remaining hair. It is recommended to wash the comb and blade with warm water.
- Cleaning precautions
- Only soft brush is used for cleaning, such as the brush provided in the package.
- It is recommended to use the lubricating oil attached in the kit or that for professional sewing machines.
- Do not clean the unit or blade with irritant or corrosive detergent.
- The clipper can be washed in water all over, but please dry the charging port before charging to avoid accidents.
- Storage
- Please put the appliance and adapter in a dry and ventilated place. And Keep the temperature under 140 ° F (60 ° C).
- Do not wrap the cord of the charging adapter around the appliance.

SAFETY INSTRUCTIONS

Warnings - to reduce the risks of burns, electric shock, fire or personal injury:

- When the appliance is plugged into the power socket, it must be watched out.
- Keep the plug and electrical cord away from heated surfaces.
- Make sure that the plug and cord are free from moisture.
- Do not plug or unplug the appliance with wet hands.
- Please don't use the appliance with a broken cord. Please contact the seller to purchase a new cord.
- Please charge it, use it and keep it stored at 15-35°C.
- Remember to unplug the appliance when cleaning it.
- Only the attachments provided with the appliance should be used.

— 10 —

- Keep the clipper out of the reach of children. People with reduced physical, sensory or mental capabilities or lack of experience are not recommended to use it. Otherwise it may lead to a dangerous situation.

ENVIRONMENTAL PROTECTION

Please handle the battery properly when discarding the clipper. Otherwise it may cause environmental pollution. You can seek advice from our service center or from your local solid waste management department.

◆ Note: Do not put the battery into the fire, otherwise it may burst or be damaged to release toxic substances.

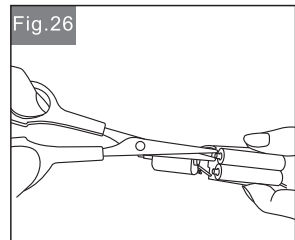
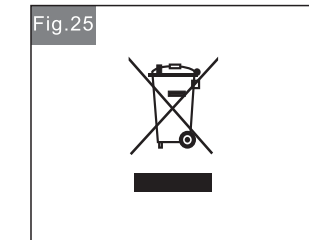
⚠ Do not discard electrical appliances together with general household waste. Please send them to official recycling facilities for the sake of environmental protection (Fig.25).

BATTERY DISPOSAL

Take the battery out of the shell with scissors and disconnect the battery and the appliance by cutting the connecting wires (Fig. 26).

Batteries must be removed from the appliance before discarding.

1. Unplug the clipper from the socket to avoid the risk of electric shock.
2. Screw out the back screws with a screwdriver; pry open the shell; screw out the screws on the circuit board; find the connecting wires on the battery, and cut them.
3. Clamp the wire connecting the battery with steel wire pliers.
4. Batteries removed from the appliance should be disposed of properly as per local regulations.



— 11 —