



EASILY UPGRADE TO

G E N O S

Tyros > Genos

CONT

INTRODUCTION	3
COMPARISON OF TYROS AND GENOS	4
1. PART SELECT / VOICE SELECT – SELECTING A VOICE	6
2. REGISTRATION MEMORY – SAVING REGISTRATIONS	8
3. ONE TOUCH SETTINGS	10
4. MULTI PAD CONTROL	12
5. STYLE CONTROL	14
6. SELECTING STYLES	14
7. THE MUSIC FINDER / THE PLAYLIST	16
8. LIVE CONTROLS	18
9. DSP EFFECTS	18
ADVANTAGES OF GENOS	22
THE GATEWAY BUTTONS	22
THE ASSIGNABLE BUTTONS	23
ROTARY SP / ASSIGNABLE	24
HOME SHORTCUTS	24
THE SEARCH FUNCTION	25
FAVOURITES	26
THE LIVE CONTROLS	27
COMPATIBILITY OF TYROS AND GENOS	29
ENTIRE CONTENT OF THE TYROS HARD DRIVE (HD)	29
EXPORT USER DATA FROM TYROS	30
IMPORT USER DATA INTO GENOS	35
THE NEW GENOS WORLD OF STYLES	38
CONCLUSION	43

INTRO

INTRODUCTION

DEAR TYROS USERS,
DEAR KEYBOARD PLAYERS,

The Genos heralds the start of a new era of top-class keyboards. Countless keyboard players are already enjoying making music on their Genos keyboards, impressed by the superior sound and the various advancements that have been made.

Yamaha has spent a lot of time developing the Genos in order to make it easier to use without straying too far from the tried-and-tested Tyros models. For this reason, many of the components have been retained and improved. The large touch display makes the control elements significantly easier to use, and also means far fewer buttons are required on the panel. Some of the buttons can be assigned specific functions too, allowing users to select the most important functions for them and keep these within easy reach.

This transition handbook provides a comprehensive guide to the similarities between the Tyros and Genos models as well as the new features that are available.

The chapter 'Comparison of Tyros and Genos' provides a step-by-step guide for using the most important functions. The chapter 'Advantages of Genos' contains various solutions that will make this keyboard easier to use, and which many players felt were missing from the Tyros models. The Genos developers have also worked hard to ensure compatibility with old Tyros data. In the chapter 'Compatibility of Tyros and Genos', we show you how easy it is to copy your data to your Genos so you can begin playing right away.

Take a few minutes and dive into the world of Genos with us.

COMPARISON OF TYROS AND GENOS

The Genos design incorporates proven Tyros control elements to simplify and speed up the transition process. The following section presents the most important of these elements.

TYROS



Panel Tyros5 / Tyros4

GENOS



Panel Genos

1. Part Select / Voice Select – Selecting a voice
2. Registration Memory – Saving Registration
3. One Touch Settings
4. Multi Pad Control
5. Style Control
6. Selecting Styles
7. The Music Finder / The PLAYLIST
8. Live Controls
9. DSP Effects

1. PART SELECT – SELECTING A VOICE



» In PART SELECT,



» or using the selection keys in the main display, click on one of the groups 'RIGHT1' to '3' or on 'LEFT'.



» Press one of the VOICE buttons.



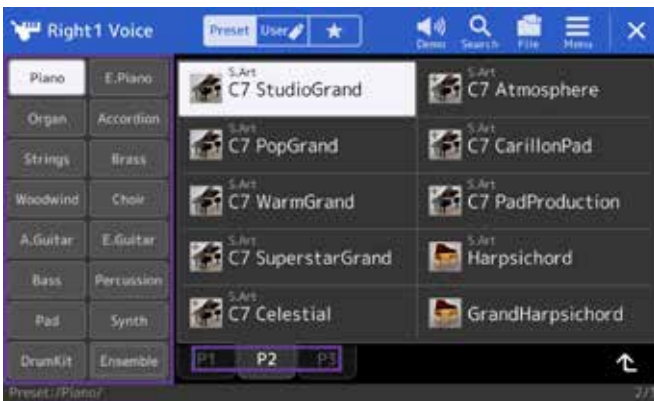
» Select one of the Voices using the 10 selection keys 'A' to 'J'. You can scroll through the pages using the corresponding buttons 'P1', 'P2', etc.

» Press 'EXIT' to leave the Voice selection.

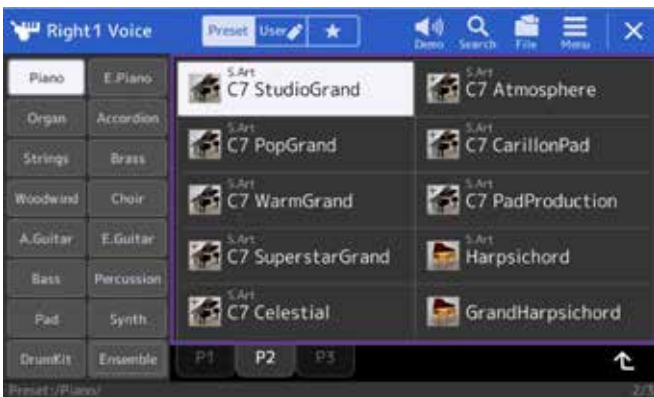
1. VOICE SELECT – SELECTING A VOICE



» In VOICE SELECT or in the main display, click on one of the groups 'RIGHT1' TO '3' or on 'LEFT'.



» Select one of the VOICE categories directly on the left-hand side of the display. You can scroll through the individual pages (P1, P2, etc.) directly in the display.



» Press on the Voice you wish to select.

» Press 'EXIT' to leave the Voice selection.



Summary: With Genos, you can select a Voice directly in the display. You therefore no longer need to skip through the control panel as with the Tyros models.

TIP!

With Genos, the additional GATEWAY button 'VOICE' allows you to view all the relevant information for each sound through parameters that can be changed on this page. This eliminates the need to switch between multiple menu pages and saves time.

2. REGISTRATION MEMORY – SAVING REGISTRATIONS

Various Tyros settings can be stored in the Registration Memories and can be accessed quickly at any time.



» To save a Registration Memory, click the 'MEMORY' button



» and use the arrow keys '2' to '7' and '8' to select the data to be saved.



» Click on the desired Registration Memory '1' to '8'.



Registration Information:

On this page you will find all the information you need on the content saved in Registration Memories 1 to 4 or 5 to 8.

» Click on 'DIRECT ACCESS' and then on one of the Registration Memories '1' to '8'.

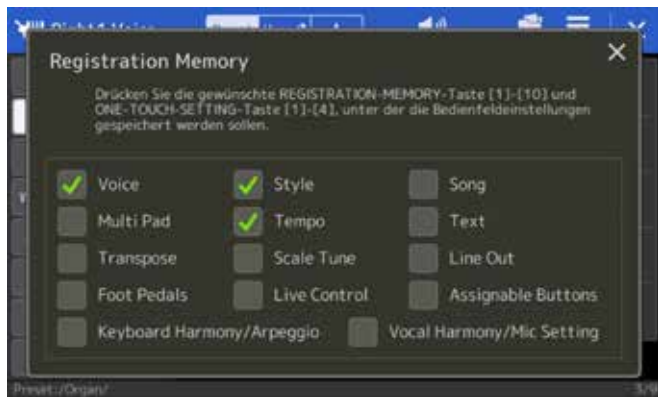
» Click 'EXIT' to leave the page.

2. REGISTRATION MEMORY – SAVING REGISTRATIONS

With Genos, Registration Memories are saved in the same way as with the Tyros models.



» To save a Registration Memory, click the 'MEMORY' button



» and select the data to be saved directly in the display. Changes can be made more quickly.

To avoid accidentally confusing 'FREEZE' and 'MEMORY', the keys have been designed to look different from one another on the Genos.



» Click on the desired Registration Memory '1' to '10'.



Registration Information:

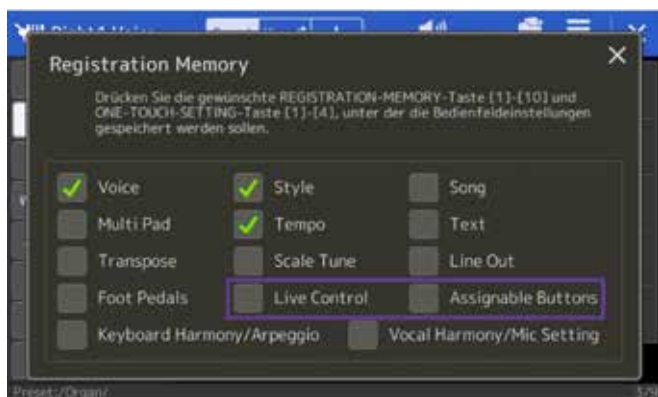
Genos also displays all information saved in the Registration Memories '1' to '10'.

» Click on 'DIRECT ACCESS' and then on one of the Registration Memories '1' to '10'.

This page displays an overview of the Voices and Styles stored in the Registration Memories '1' to '10'.

» Click on the cross in the top right-hand corner to exit the page.

Summary: With Genos, you can save 10 Registration Memories per Bank instead of just 8. This provides more space for increased creativity.



TIP!

Two Registration Memory improvements allow 'Live Control' and 'Assignable Buttons' settings to be saved too.

3. ONE TOUCH SETTINGS

The One Touch Settings contain Registration suggestions created to complement the chosen Style.



» Select a Style.



» Play a melody, and while you play select the One Touch Settings '1' to '4'.



» You can also link the Style Variations 'A' to 'D' to the One Touch Settings '1' to '4' by switching on the 'OTS LINK' function.



OTS Information:

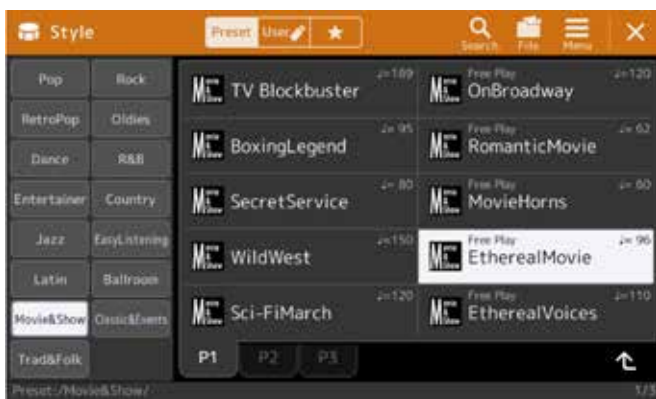
» Click on 'DIRECT ACCESS' and then on one of the four 'ONE TOUCH SETTINGS'.

» The OTS INFORMATION page shows the contents saved to each of the One Touch Settings '1' to '4'.



3. ONE TOUCH SETTINGS

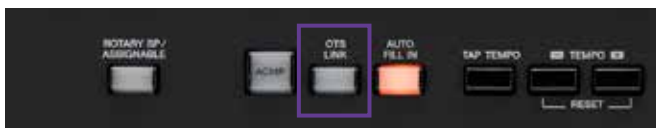
Genos also offers a suggested Registration for each Style Variation in One Touch Settings. The One Touch Settings are used and function in exactly the same way as with the Tyros models.



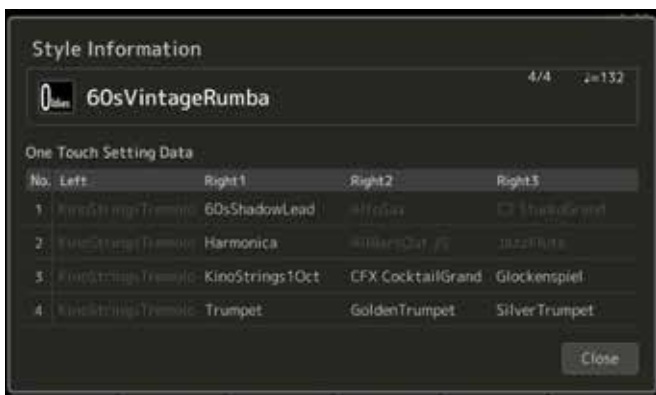
» Select a Style.



» Play a melody, and while you play select the One Touch Settings '1' to '4'.



» With Genos, you can also link the Style Variations 'A' to 'D' with the One Touch Settings '1' to '4' by switching on the 'OTS LINK' function.



OTS Information:

» Click on 'DIRECT ACCESS' and then on one of the four 'ONE TOUCH SETTINGS'.

Genos also provides a clear overview of all contents saved to the four OTS options.

Summary: Genos allows you to choose from 2200 One Touch Settings. This is the largest selection of any keyboard.

4. MULTI PAD CONTROL

The Multi Pads contain harmonic accompanying phrases, percussion loops, one shots, etc. that can be used to enhance your musical performance.



» Click on 'SELECT'.



» Choose your desired Multi Pad Bank.



» Click on one of the Multi Pad Banks '1' to '4'.

If a Style is playing, the Multi Pad Bank options are synchronised to the tempo of the Style (except one shots). Many options are also harmonically adapted to the chosen chords.

4. MULTI PAD CONTROL

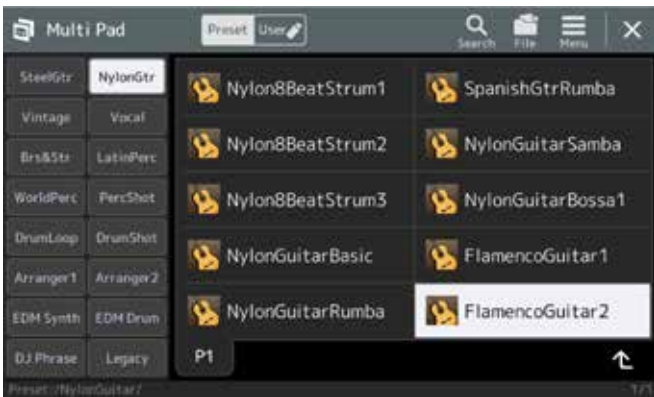
The MULTI PAD CONTROL is used in exactly the same way with Genos as with Tyros. However, the concept has been expanded to offer more musical freedom. Many Banks have both harmonic accompanying phrases and percussion loops. This means the MULTI PAD CONTROL can be used like an additional 'small' automatic accompaniment.



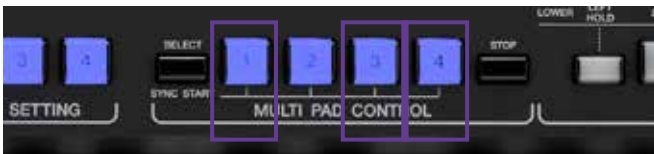
» Click on 'SELECT'.



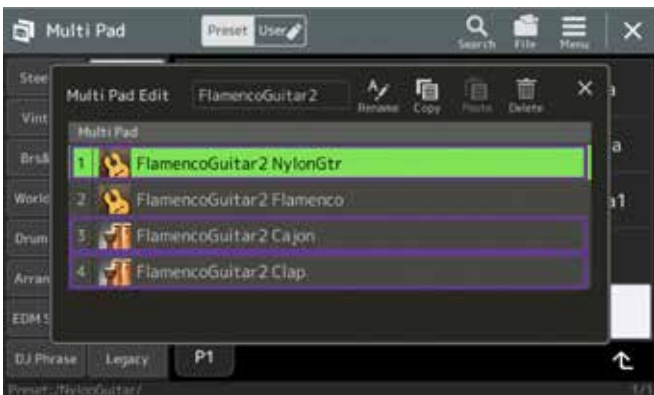
» Selected the desired Multi Pad Bank (e.g. 'FlamencoGuitar2' from the category 'NylonGtr').



» Click on the Multi Pad Banks '1', '3' and '4'.



» Switch on 'ACMP' and play some chords. The three Multi Pad Banks with a guitar accompaniment (1), a rhythmic cajon pattern (3) and hand claps (4) now function as an additional automatic accompaniment.



Summary: With 460 Multi Pad Banks, Genos offers much more content than the Tyros models. The new design means that as well as the Genos automatic accompaniment, there is an additional 'small' automatic accompaniment in the form of the MULTI PAD CONTROL, which can be used in combination too.

TIP!

Different USER MULTI PAD BANKS can also be freely combined if desired. With both Genos and Tyros5, audio files can also be incorporated using the 'Audio Link Multi Pad' function.

5. STYLE CONTROL

When playing with Styles, there are four Variations available as well as three Intros and three Endings. In addition to the 'BREAK' button, Fill Ins are played when the Variation is changed if the 'AUTO FILL IN' button is activated.



6. SELECTING STYLES



» On the left-hand control panel, select a Style category



» or open the previously selected category using the selection key 'D' in the main display.



» Select the desired Style by clicking the buttons 'A' to 'J'.

» Press 'EXIT' to leave the Style selection.



5. STYLE CONTROL

This step is exactly the same for the Genos, so you can continue to use this function in the same way.



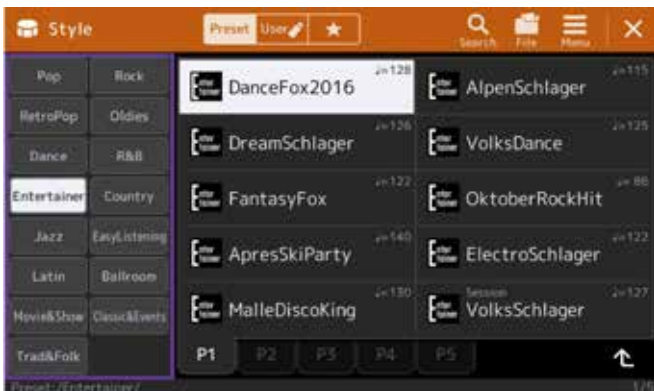
6. SELECTING STYLES



» Click on the GATEWAY button 'STYLE'



» or click on the selection field for Styles in the main display.



» Click on one of the 15 categories.

» Click directly on the Style you wish to select.

» Click 'EXIT' to leave the Style selection.

Summary: With Genos, you can select a Style directly via the display. You therefore no longer need to skip through the control panel as with the Tyros models.

With 550 Styles, Genos offers more Styles than any other keyboard. The new categories 'RetroPop', 'Easy Listening' and 'Oldies' add a large number of Styles to the range.

7. THE MUSIC FINDER

In Tyros models, the Music Finder offers fast selection of a Record, which is often named after a song.



» Click on 'MUSIC FINDER'.



The Music Finder entry can save information on the Style, Variation and Tempo. It is also possible to link a MIDI file.

You can search for entries using the above information and save these under FAVOURITE. The Music Finder entry is always based on a Style with a selected Intro and the Variation, which is then assigned to the corresponding OTS. (Pressing the 'MUSIC FINDER' button automatically activates the 'OTS LINK' function.)

7. THE PLAYLIST

The Tyros Music Finder has been replaced by the PLAYLIST function on Genos.



» Click on the GATEWAY button 'PLAYLIST'.



The PLAYLIST is based on entries from the REGISTRATION MEMORY, which makes it vastly more powerful than Music Finder and significantly easier to create new entries.



Specific Registration Memories can be selected with the PLAYLIST. In addition to the existing information found in the Registration Memory, links to MIDI and AUDIO files as well as opening LYRICS and SCORE pages can be saved in the PLAYLIST.



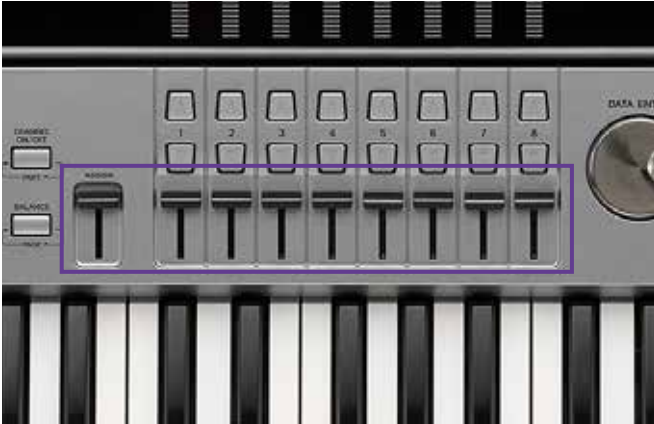
You can create an unlimited number of Playlists. All entries can be copied and reordered as desired. The integrated search function will take you directly to a desired entry if you want to find a specific song.

Genos can create Playlists from your existing Tyros MUSIC FINDER files. This means no data is lost during the transition!

Summary: The Playlist function ensures complete flexibility and easy operation when managing Registrations, Songs and Texts.

8. LIVE CONTROLS

The eight Live Controls underneath the display ensure quick access to the functions shown on the display. Each ASSIGN control can be assigned a small selection of functions.



9. DSP EFFECTS

With the Tyros models, there are between five and nine available DSP Insertion options. From Tyros5 onwards, there is also a new graphical DSP interface for improved operation.



» Press the button 'MIXING CONSOLE'

Continued on page 20

8. LIVE CONTROLS

In Genos, there are nine sliders and six knobs to the left of the display for optimal control. All Live Controls can be assigned their own functions and these can be saved in the Registration Memories. The functions of the six knobs are grouped together and you can create 3 groups of knob settings which can be scrolled through using the Knob Assign button. The sliders can have up to 5 groups of settings which can be crolled through using the Slider Assign button.



Summary: The size of the slider and above all the longer track (the distance between the minimum and maximum values) allows for greater control over parameters. With the Drawbar Organ, each slider corresponds exactly to one footage.

9. DSP EFFECTS

Voices in Right 1 - 3 and Left, the 8 backing tracks of the auto-accompaniment Style, a MIDI file with up to 16 backing tracks and the effect path for the microphone - all require DSP effects to achieve the optimal sound. The Tyros models only had between five and nine Insertion Effects, meaning that many functions were simply not possible.

With 28 Insertion Effects, Genos exceeds the possibilities of other top keyboards and workstations.



» Press the GATEWAY button 'MENU'

Continued on page 21



» and use the 'TAB' button to navigate to the 'EFFECT' entry.



» Press the selection key 'A'.



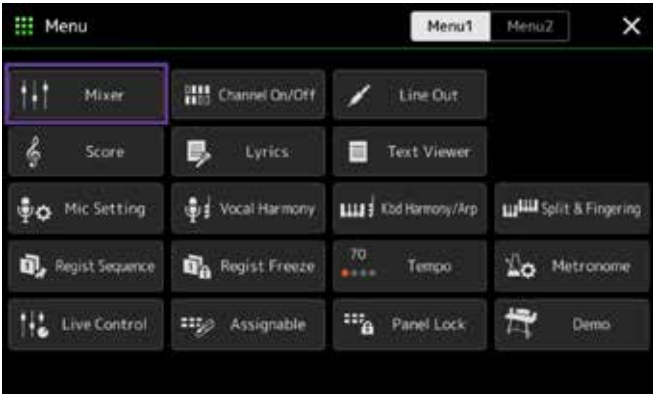
» Use the arrow keys '1' and '2' to select the DSP option, and the arrow keys '3' and '4' to assign these to the corresponding channel.



» The selection key 'B' opens the category for the Effect. Use the arrow keys '1' to '4' to select an Effect.



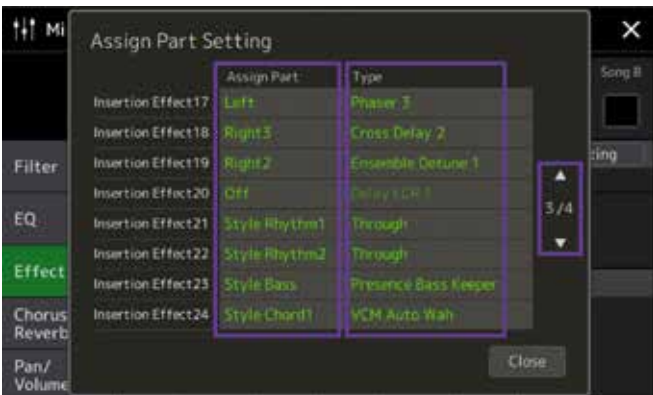
» Click on 'EXIT' to leave the Effect page.



» and then click on 'Mixer'.



» Press 'Effect' and then on 'Assign Part Setting'.



» Use the up and down arrows to navigate through the 28 Insertion Effects. 'Assign Part' assigns the Effect to the corresponding track.

» Click on an Effect type on the right-hand side.



» You can change all parameters of the displayed Effect, using the Control shown, by touching the display. Save these as a new Effect at the bottom left.

» Click the GATEWAY button 'HOME' to leave the Effect page.

Summary: The range of Insertion Effects offers plenty of choice when working with MIDI files and when playing with Styles alike. The Genos offers more Effects than any Tyros model, and the quality is higher too. Effects can be assigned quickly and easily using the touch display.

ADVANTAGES OF GENOS

Do you play your keyboard with automatic accompaniments, or do you only use Voices? Do you tend to use MIDI files, do you even create your own arrangements?

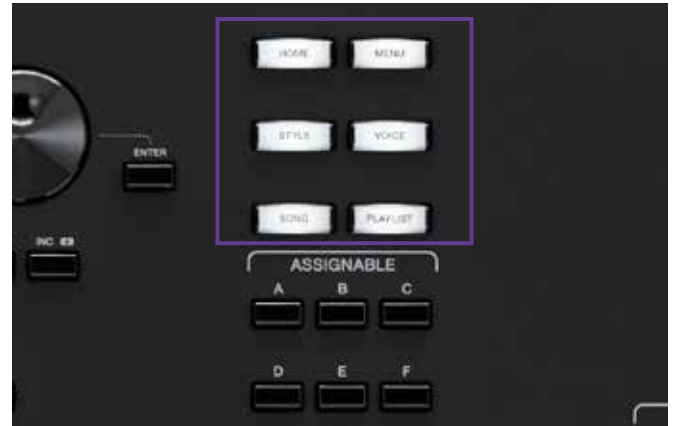
Keyboards are designed for all kinds of musicians. With previous models, this had the disadvantage that some functions could only be accessed through numerous steps.

For the first time, Genos allows you to adapt your instrument to suit your own needs. Musicians playing on stage might need direct access to the Lyrics, Mixer and Mic Setting functions. On the other hand, those playing at home might prefer to have quick access to the Note Display function and to be able to keep their Playlists to hand at all times.

In this chapter, we will show you how easy it is to adapt your Genos to suit your own needs.

THE GATEWAY BUTTONS

The GATEWAY buttons take you directly to an overview of the most frequently used menus with just one click.



VOICE displays the most important information for the Parts 'Right1' to '3' and 'Left' on one page.

STYLE takes you directly to the Style selection.

SONG displays all key functions for MIDI and AUDIO files for both players.

PLAYLIST provides access to all Playlist functions.

The **MENU** button takes you directly to the full list of Genos settings, the **HOME** button takes you directly back to the home screen.

» Press each GATEWAY button and view the pages on the display.

GENOS

THE ASSIGNABLE BUTTONS

The ASSIGNABLE buttons 'A' to 'F' can be linked to pages that you use frequently, for example the menu pages or special functions (e.g. TRANSPOSE).

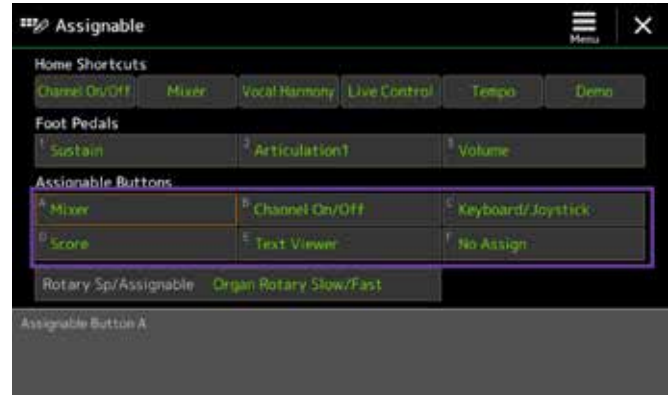


As a default, these buttons are assigned as follows

- A: MIXER
- B: CHANNEL ON/OFF
- C: KEYBOARD/JOYSTICK
- D: SCORE
- E: TEXT
- F: no assignment

Reassigning the buttons

- » Click on 'DIRECT ACCESS' and then on one of the 'ASSIGNABLE buttons'.



The lower part of the display shows the current assignment of the ASSIGNABLE buttons.

- » Click on the field of the ASSIGNABLE button 'A' to 'F' that you wish to change.



- » Use the arrow keys to select one of the 80+ menu options and functions on 12 pages.
- » Click the GATEWAY button 'HOME' to leave the selection page.

You can now use the ASSIGNABLE button to access your chosen selection with just one click.

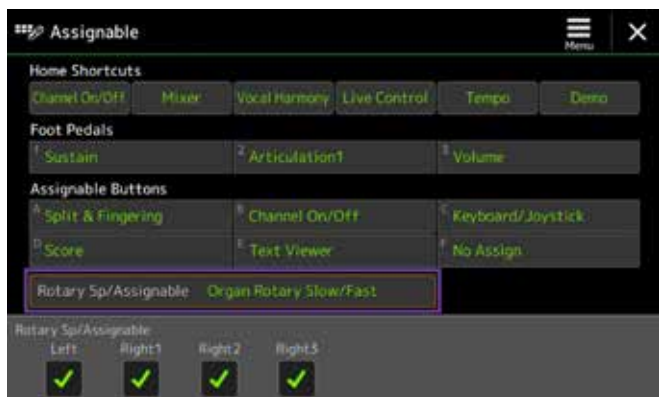
Your assignment can also be saved in one of the Registration Memories. This allows you to create different interfaces for each purpose.

ROTARY SP/ASSIGNABLE

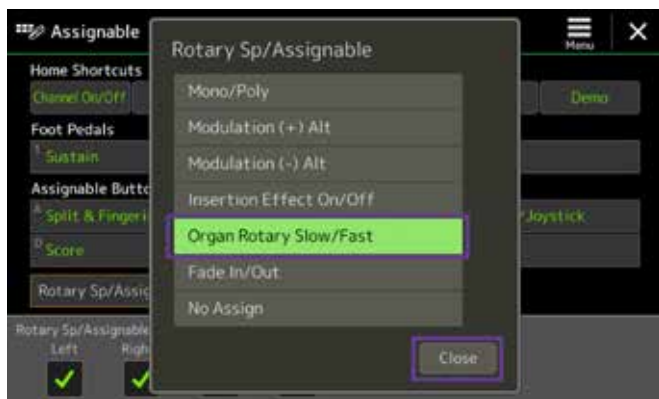
A further button on the left-hand side, called 'ROTARY SP/ ASSIGNABLE', can also be assigned various functions.



- » Press the button 'DIRECT ACCESS' and then press the 'ROTARY SP/ASSIGNABLE' button.
- » Press the 'ROTARY SP/ASSIGNABLE' field in the display.



- » Select one of the six functions.



- » Press 'Close' to exit the selection.

This assignment can also be saved in one of the Registration Memories.

HOME SHORTCUTS

The HOME SHORTCUTS can be found in the lower part of the Home main display.



The six fields can be assigned one of 33 functions, as before.



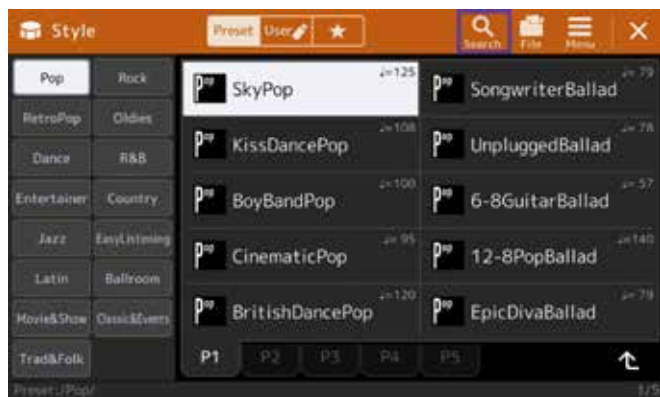
- » Click the GATEWAY button 'HOME' to leave the selection page.



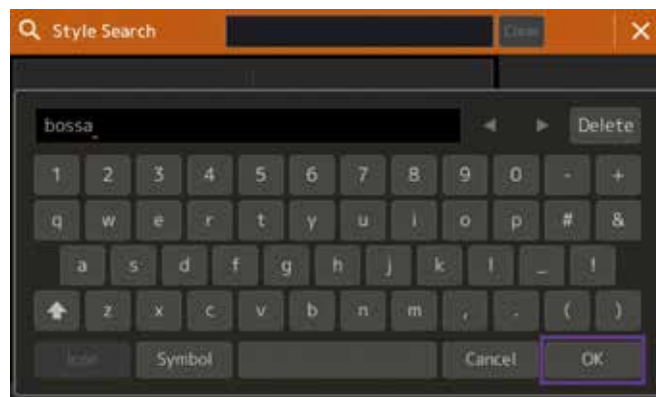
THE SEARCH FUNCTION

Genos allows you to search by Registration Memory, Voices, Styles, Playlist entries, MIDI and AUDIO files. To perform a search, use the magnifying glass icon on the individual selection pages.

- » Press the GATEWAY button 'STYLE' and then press the 'search' magnifying glass icon.



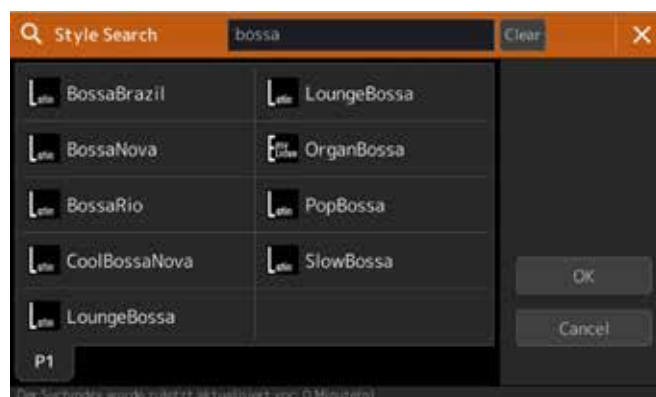
- » Enter the term for which Genos should search (e.g. 'bossa') and then click 'OK'.



- » Click in the search field at the top.



Genos now lists the Styles from all categories that include the word 'bossa' in the name.



- » Click the GATEWAY button 'HOME' to leave the selection page.
- » Test the search function in the REGISTRATION MEMORY, VOICE, PLAYLIST and SONG areas too.

TIP!

If you include numbers in your song names (e.g. 072 MyWay), you can also search for them by number!



FAVOURITES

Do you always use the same Voices and Styles, and would you like to have these to hand at the click of a button, regardless of the Registration? Genos provides a favourites list for this purpose.

» Click on the Voice area on the main display.



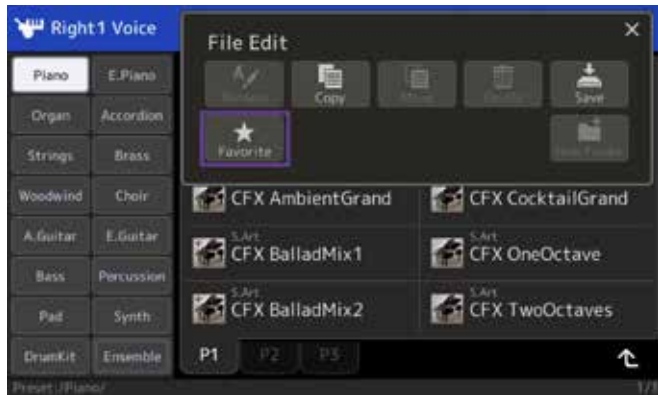
» Select the Voices that you wish to save in your Favourites list and finish the task by clicking 'Favourite' in the top right-hand corner.



» Select a Voice category and click on 'File'.

» Click on 'Favourite'.

» Repeat this step by adding more Voices from other Voice categories.





THE LIVE CONTROLS

It is often important to adjust the volume or change the Effects, etc. during a performance. Most keyboards do not offer enough options for carrying this out quickly and efficiently.

However, Genos has six controllers and nine sliders on the left-hand side, all of which can also be assigned their own functions.

- » At the top of the display, click the star symbol to access the Favourites list. All selected Voices will be listed here in the order in which they were selected.



- » Voices added to the Favourites list will now display a yellow bar in the icon



- » Click the GATEWAY button 'MENU' to leave the selection page.

TIP!

If you click and hold on a Voice or Style, a yellow bar will appear in the icon. You can delete the yellow bar again by clicking and holding down once more.



The six knobs

The six knobs have three Knob Assign Types and are assigned various functions as default.

- » Repeatedly press the button 'KNOB ASSIGN' to access Knob Assign Type 1 to 3.
- » Turn the knobs to change the corresponding parameters.



The functions and values are shown on the display above the knobs.

Assigning your own functions:

- » Press the 'DIRECT ACCESS' button and then turn one of the knobs.
- » Click in one of the 18 fields to which you wish to assign a function.



- » Select one of the 33 functions and exit by pressing 'Close'.



You can also rename the function in the lower part of the display. This name will then be displayed above the knobs when making a selection.

The assignment can also be saved in one of the Registration Memories.

- » To exit, press the GATEWAY button 'HOME'.

The nine sliders

The sliders also have three levels and are assigned various functions as default. The upper Slider Assign Types 'B' cannot be changed.

- » Repeatedly press the button 'SLIDER ASSIGN' to access levels B to 2.
- » Move the sliders to change the corresponding parameters.



The functions and values are also shown at the top of the display.

The specific functions are assigned in the same way as with the knobs, as described above.

If you have selected the Organ Flutes Voice, the sliders in two further levels will be coupled with the Drawbar and Organ Flutes Effects. The corresponding assignment is shown in the display above.



Summary: Genos offers numerous options for tailoring the instrument to your needs. Create 'your' Genos to ensure direct and simple operation. Convolved skipping through menu pages is now a thing of the past.

The new control options allow you to expand your musical output and give you many more options for making music.

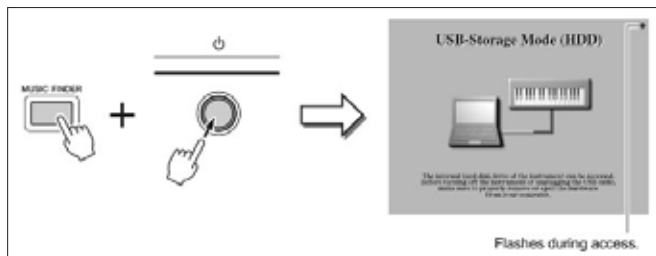
COMPATIBILITY OF TYROS AND GENOS

In order to make the transition from Tyros to Genos as smooth as possible, Yamaha has worked hard to ensure that as much USER data as possible can be transferred directly to a Genos. Transfer your personal data quickly and easily from your Tyros model to your new Genos, without relying on anyone else for help. You can transfer your Registrations, USER Styles, MIDI files, USER Multi Pads, and much more. The transfer process is simple and takes only a few minutes. You can also save your MIDI, USER EFFECT and MUSIC FINDER settings in your Tyros and transfer these to your Genos.

ENTIRE CONTENT OF THE TYROS HARD DRIVE (HD)

Tyros:

1. Connect your Tyros to a computer using a USB cable.
2. Hold down the MUSIC FINDER button and then switch on your Tyros without releasing the button. Your Tyros will start up in USB storage mode.



A moment later, your Tyros hard drive will appear on your computer as an external drive.

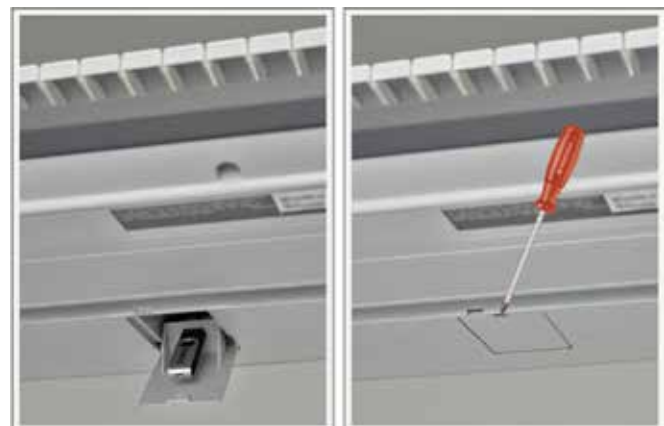


3. Move the entire contents of the Tyros HD to your computer's hard drive.



4. Then transfer the entire saved contents to an empty USB stick. Do not change any file names or alter the folder structure in any way.
5. Insert the USB stick into the USB slot in the bottom of the Genos casing and then switch on your Genos.
6. As long as no other USB storage devices are connected to the Genos, the stick will appear as USB1. Here you can select your Registrations on the Genos. Links to the data on your Tyros hard drive will correspond here to USB1.

If you have saved all USER data from your Tyros directly to one USB stick, you can insert this directly into the USB slot in the bottom of the Genos casing and switch on the Genos.



EXPORT USER DATA FROM TYROS

Save the MIDI, USER EFFECT and Music Finder settings on the Tyros:

- » Insert an empty USB stick into your Tyros (versions Tyros2 onwards).
- » Select the 'FUNCTION' button on the Tyros.
- » Use the 'H' selection key to select the 'UTILITY' entry.



- » Use the 'TAB' key to navigate to SYSTEM RESET.

Save MIDI Setup Files

- » Use the selection key 'G' to save the 'MIDI SETUP FILES'.



- » Use the 'TAB' key again to navigate to USB1.
- » Start the saving process using the down arrow key '6'.



- » Press the up arrow key '8' to confirm the entry 'OK'.



Your 'MIDI SETUP FILES' are now saved.



- » Click 'EXIT' to return to the MENU page.

Save User Effect Setup Files

- » Use the selection key 'H' to save the 'USER EFFECT FILES'.



- » Use the 'TAB' key to navigate to USB1.
- » Start the saving process using the down arrow key '6'.



- » Press the up arrow key '8' to confirm the entry 'OK'.



Your 'USER EFFECT FILES' are now saved.



- » Click 'EXIT' to return to the MENU page.

Save Music Finder Files

- » To finish, click the selection key 'I' to save your 'MUSIC FINDER FILES'.



- » Use the 'TAB' key to navigate to USB1.
- » Start the saving process using the down arrow key '6'.



- » Press the up arrow key '8' to confirm the entry 'OK'.



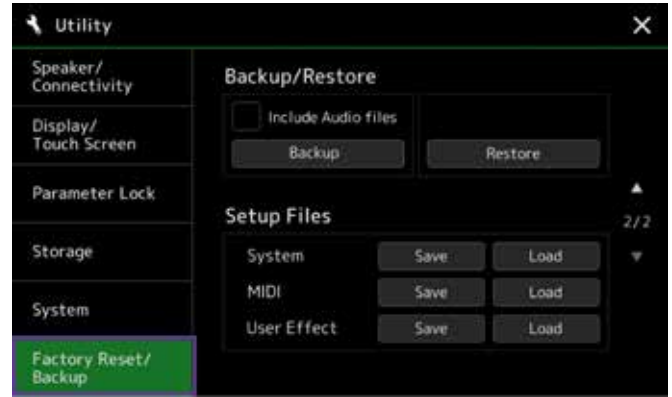
- » You now have three files on your USB stick that can be imported one by one into your Genos.



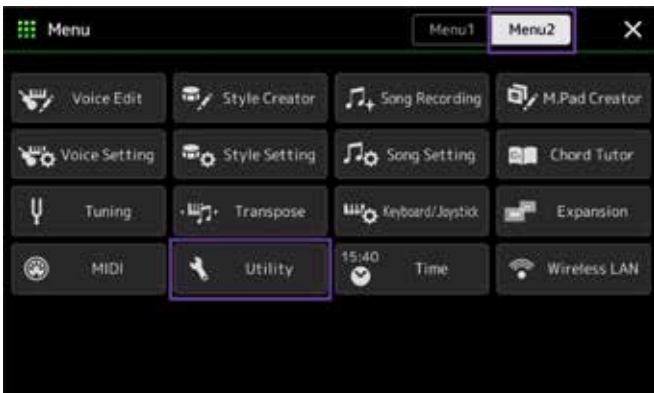
- » Click on 'DIRECT ACCESS' and 'EXIT' to return to the home page.

IMPORT USER DATA INTO GENOS

- » Insert your USB stick with the saved system files from your Tyros into your Genos.
- » Click on the GATEWAY button 'MENU' on your Genos.
- » Select the menu 'Factory Reset/Backup' in the left-hand list.



- » In 'MENU2' select the entry 'Utility'.



Import MIDI Setup Files

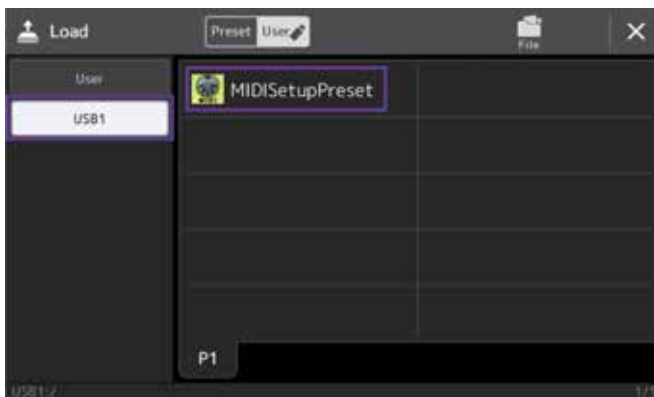
» Tap the entry 'Load' for MIDI.



» Confirm the notification with the entry 'Yes'.



» Tap the entry 'USB1' and then the entry 'MIDISetupPreset'.



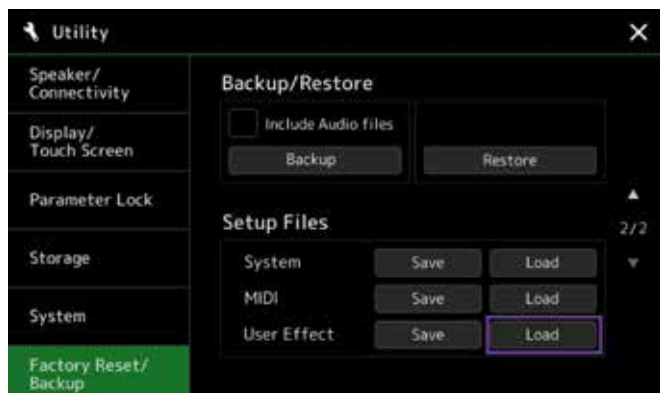
» Click on the 'X' at the top right to return to the selection.

Overview of compatible files Tyros > Genos

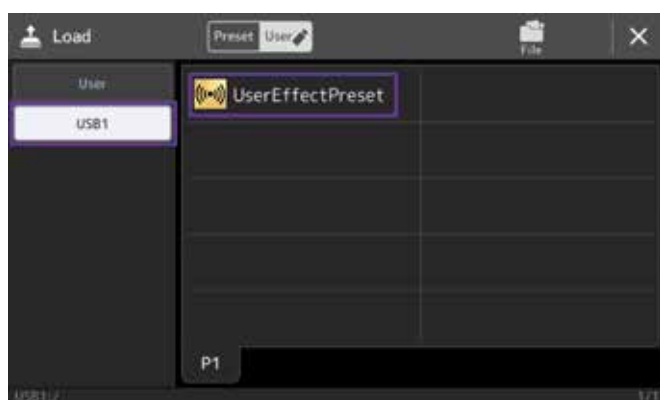
Compatibility	Song	Style	User Voice	Multi Pads	Registration	MIDI Setup Filues	User Effects
Tyros5	+	+	+	+	+	+	+
Tyros4	+	+	+	+	+	+	-
Tyros3	+	+	+	+	+	+	-
Tyros2	+	+	+	+	+	+	-
Tyros	+	+	+	+	-	-	-

Import User Effect Setup Files

- » Tap the entry 'Load' for User Effect.



- » Tap the entry 'USB1' and then the entry 'UserEffectPreset'.



- » Confirm the notification with the entry 'Yes'.



- » Click on the 'X' at the top right to return to the selection.

Particular features of the MUSIC FINDER file

With the Genos, you can quickly convert the MUSIC FINDER files into a PLAYLIST (see 'The Playlist', Page 17).

This completes the transfer of all files from your Tyros to your Genos. Note that all USER data from your Tyros can now be used on your Genos. In order to ensure compatibility, all sounds and effects from the entire Tyros range are available on the Genos. We recommend that you gradually replace these 'old' files with the new, better sounds and effects that come with the Genos. The key point, however, is that your entire repertoire can now be played on your Genos without the need for any further work.

Summary: It has never been so easy to transfer existing data from an older to a newer keyboard in the same range as with the Tyros and Genos. The complete integration of all Voices and Effects from the entire Tyros range to the Genos ensures that the existing USER data can be used immediately. Data can be transferred quickly and easily to the Genos without relying on others for help. You can therefore immediately begin playing on your Genos where you left off on your Tyros. All USER data can continue to be used directly on the Genos. No new programs are required, for example on your computer.

TIP!

The free program MEGA Enhancer V2.0.0 for PC enhances older MIDI files with the right sounds from your Genos. You can download this from <https://uk.yamaha.com> in the download area on the Genos product webpage.

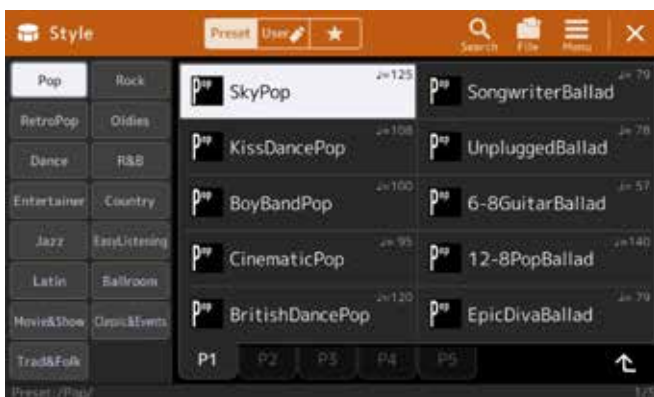
THE NEW GENOS WORLD OF STYLES

Tyros5 significantly raised the bar in terms of accompanying Styles and impressed users with sophisticated arrangements and diverse possibilities for expression. The Audio Drums were used for the first time in some Styles. In Genos, the Styles have once again been taken to a new level. As well as the high technical quality of programming in all genres, the Genos features the new Revo Drums. This is the most realistic and nuanced of all percussion sounds. You may recognise some Styles from the Tyros, but with the Genos they will sound new and more expressive, and they have all been completely revamped. The enormous Effect power means that each accompaniment track, including both drum tracks, can be used with its own Insertion Effect, with a total of eight Insertion Effects reserved for each Style. New categories, such as Oldies, Retro Pop and EasyListening are full of musical treats.

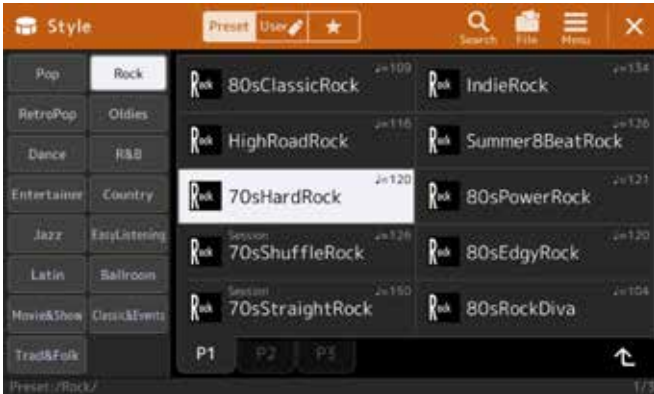


Try out some of the breathtaking new Styles for yourself with the Genos.

- » Switch on your Genos and tap the field with a red frame in the display.



The Style selection window opens.



Rock category: 70sHardRock – realistic rock guitars with seven different Insertion Effects.

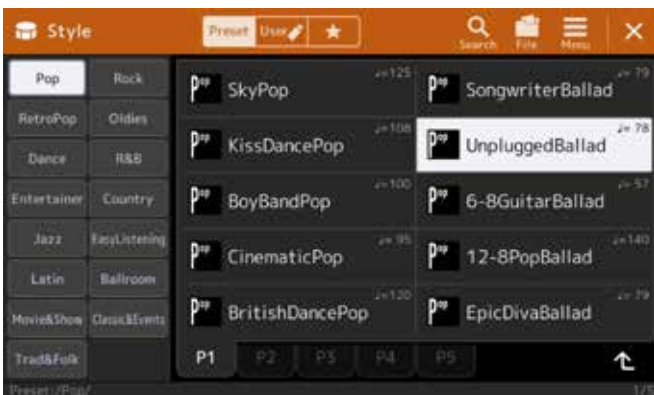
- » Start by selecting the Style.
- » Then click on the ASSIGNABLE button 'A'.



The Mixer page opens.

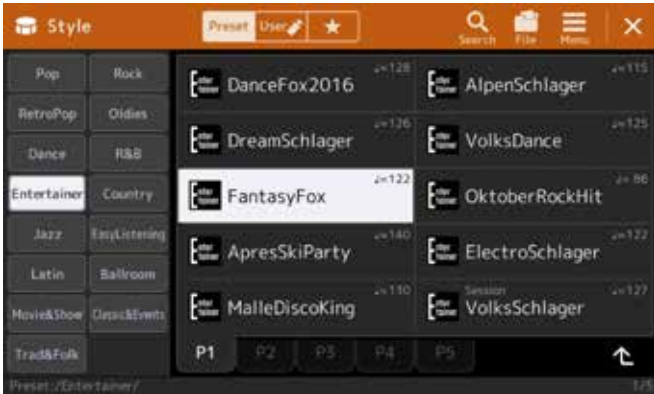
- » Tap 'Style1' in the top display.

The Mixer view for the Style is displayed.

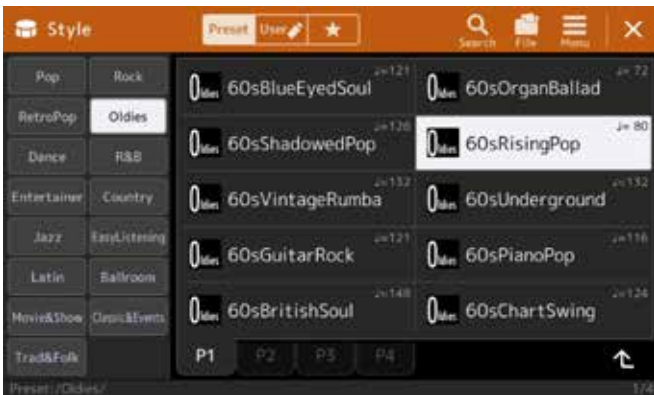


Pop category: UnpluggedBallad – acoustic guitar accompaniments with the new Revo Drums JazzBrushExpanded.



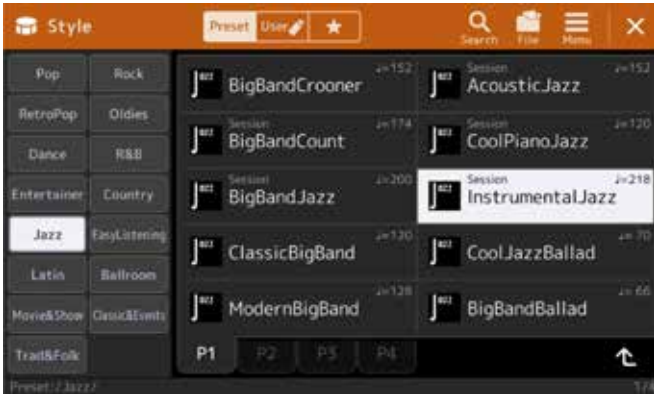


Entertainer category: FantasyFox – perfect pop hits (Schlager) sound with the new EDM Drums.



Oldies category: 60sRisingPop – Oldie sound with Revo Drums VintageOpenKit.

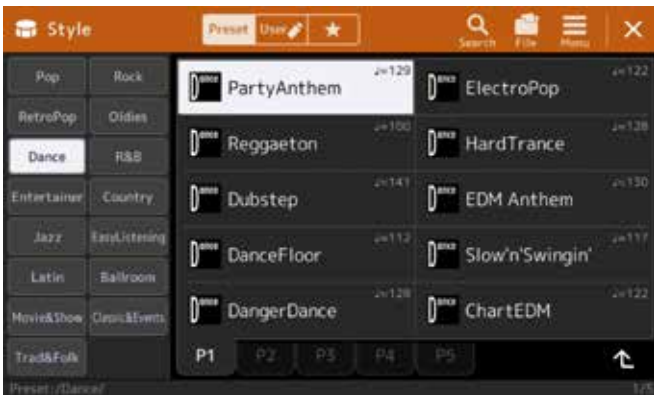




Jazz category: Session Instrumental Jazz – natural brush sound with the new Revo Drums JazzBrushExpanded.



Dance category: Party Anthem – contemporary Dance Party Sound.



Summary: Compromises sometimes had to be made on the Tyros when it came to Drum Sets and Effects, but with the Genos, the sky's the limit. For each genre you will find the right Revo Drums sound that takes quality to the next level, and that can even be individually adapted and combined for each Style using the integrated Drum Editor. The new One Touch Settings complete the Style selection process, as these settings can also use a specifically reserved Insertion Effect for each tone. Try it out!

CONCLUSION

Thank you for taking the time to explore just a few of the countless opportunities presented by Genos.

Your Genos uses many of the well-known Tyros tools, allowing a swift transition to the new generation of top-class keyboards. You will immediately feel the benefits of the touch display and you'll never want to go back. Use all the options for tailoring your Genos to your precise needs, keeping selected tools to hand at just one press of a button. Copy all your Tyros data to Genos and start playing your new instrument exactly where you left off. The new options will fill you with inspiration and new ideas for your musical repertoire.

Also benefit from future firmware updates for Genos, which will continue to open new possibilities for you. Visit yamahamusicsoft.com to find a range of possibilities for enhancing your Genos musical experience.

If you have any questions, your specialist dealer and the support team at your local Yamaha branch will be able to help you. There are also plenty of third-party providers who offer additional support, such as manuals or tutorials.

We hope you enjoy your Genos!

Musical regards,
Your Authors

Manni Pichler and Roman Sterzik

