



Welcome

Thank you for your purchase. Your new thermostat will provide uniform and comfortable temperature control throughout every room in your peoperty. We bring together technology, craftsmanship and the highest quality materials to provide you with a safe, reliable product combined with sleek, contemporary design. Please read this installation/ programming manual for comprehensive instructions on installing and operating your thermostat. Please also ensure a suitably qualified person installs your thermostat and complies with all local regulations.

In the box you will find

Thermostat	1pc	Screws	2pc
User Guide	1pc	QC Passed	1pc

SYSTEM TYPE

- 1. Warm air, hot water, high efficiency furnaces, heat pumps, steam, gravity.
- 2. Heat only—including power to open and close zone valves, and normally open zone valves.
- 3. Heat only with fan.
- 4. Cool only.

FEATURES

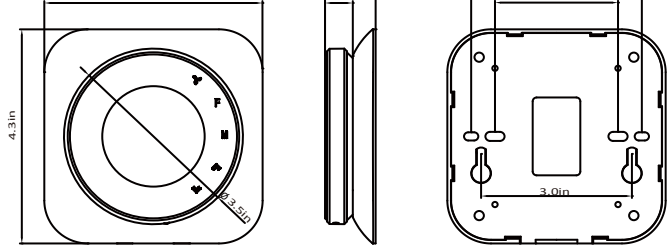
On Appearance

- 1. Negative black sceen will bring you to a secret world.
- 2. 51mm round display area helps to protect your eyes.
- 3. Touch buttons to make simple operation.
- 4. Amazing Silver Frame opens your modern life.
- 5. The visiable thickness above the wall is only 11mm.
- 6. Rotation to connect gives you easy installation.
- 7. Wall mounted or suitable for the installation of Europe, China, Japan, USA and Italy.
- 8. White, black or brushless stainless steel housing creates your colorful life.

On Functionality

- 1. Powerful functions are available such as WIFI etc.,
- 2. 0.5℃ accuracy keeps temperature within the level you set.
- 3. ℃ & ℉ is changeable.(On thermostat)
- 4. 5+1+1 four periods programmable.
- 5. Temporary programmable.
- 6. Holiday mode.
- 7. All setting languages sunchronize your time zone, address and language.
- 8. No limit to add thermostats in App.
- 9. Support Smart Scene.
- 10. Support to make group and two stage groups.
- 11. Support device sharing.

DIMENSION



TECHNICAL DATA

Power Supply: AC/DC24V ±10%
Current Load: 1A (Inductive) 3A (Resistance)
Sensor: NTC3950, 10K
Set Temp. Range: 42-122 ℉ (5~50 ℃)
Accuracy: ±1 ℉
Display Temp. Range: 41~210 ℉ (5~99 ℃)
Ambient Temp: 32~113 ℉ (0~45 ℃)
Ambient Humidity: 5~95%RH(Non Condensing)
Storage Temp: 23~113 ℉ (-5~45 ℃)
Timing Error: <1%
Power Consumption: <1.5W
Shell Material: PC+ABS(Fireproof)
Available Installation 1: Wall mounted
Available Installation 2: Hole Distance of 62±5mm (Europe, China and Japan)
Available Installation 3: Hole Distance of 86±3mm (USA and Italy etc.,)
Wire Terminals: Wire 2×1.5mm2 or 1×2.5mm2
Protection Class: IP20
Buttons: Capacitive Touch Buttons

BEFORE WIRING AND INSTALLING

- 1. Read these instructions carefully. Failure to follow them could damage the product or cause a hazardous condition.
- 2. Check the rathings given in the instructions and on the product to make sure the product is suitable for your application.
- 3. installer must be a trained, experienced service technician.
- 4. After installation is complete, check out product operation as provided in these instructions.

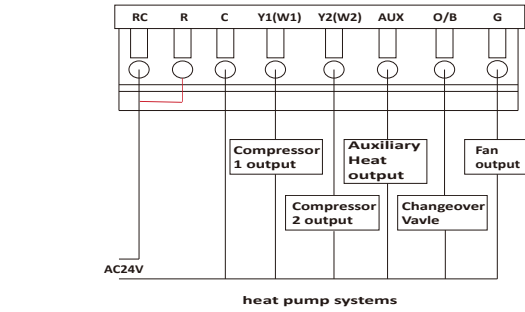
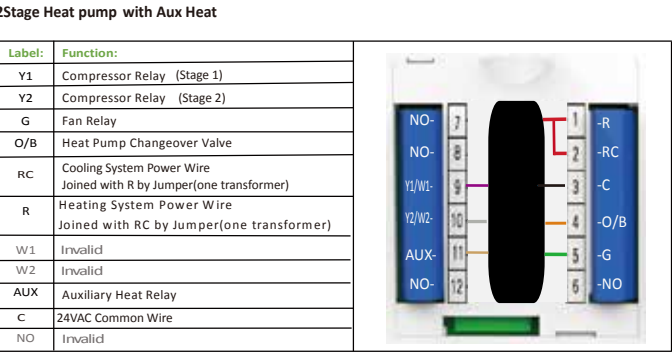
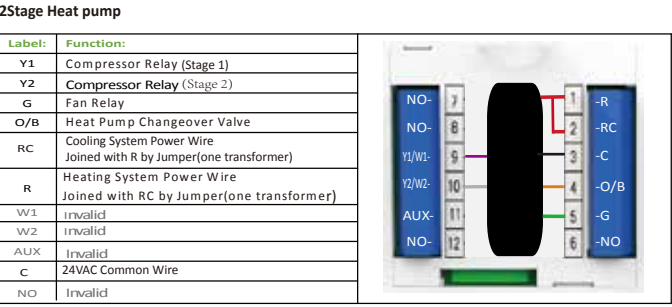
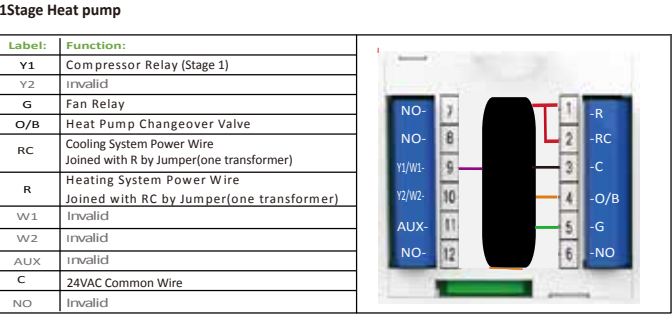
CAUTION

Electrical Shock or Equipment Damage Hazard. Can shock individuals or short equipment circuitry. Disconnect power supply before installation.

WIRING

All wiring must comply with local electrical codes and ordinances. This thermostat works with 24V heating and cooling systems. There Y1, W1 share one terminal, Y2, W2 share one terminal.

For Example:



No.	Type	Terminals	Wiring	Compressor delay
0.0	1H/1C (conventional)	R. G. W1. Y1	Diagram	none
1.0	1H/2C (conventional)	R. G. W1. Y1. Y2	conventional systems	none
2.0	2H/2C (conventional)	R. G. W1. Y1. W2. Y2		none
3.0	2H/1C (conventional)	R. G. W1. Y1. W2		none
4.0	1H/1C (heat pump)	R. G. O/B. Y1(W1).	Diagram heat pump systems	1 min (default)
5.0	2H/1C (heat pump)	R. G. O/B. Y1(W1). Y2(W2)		1 min (default)
6.0	2H/2C (heat pump)	R. G. O/B. Y1(W1). Y2(W2)		1 min (default)
7.0	3H/2C (heat pump)	R. G. O/B. Y1(W1). AUX. Y2(W2)		1 min (default)

INSTALLATION

Your thermostat is suitable for three different kinds of installation.

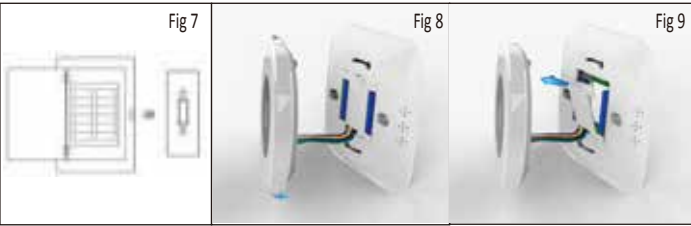
- 1. For wall mounted.
- Step 1. Keep the electricity off. See Fig 1.
- Step 2. Remove the mounting plate by rotating the LCD part. See Fig 2.
- Step 3. Open the insulating cover. See Fig 3.



- Step 4. Connect power supply and load into the appropriate terminals. (see“Wiring your thermostat” for details and Fig 4).
- Step 5. Close the insulating cover and fasten body of thermostat and the mounting plate by rotating. See Fig 5.
- Step 6. Measure the position you want to place and lock the two screws in the box into the wall. Fix the head of screws into the slot of the back of thermostat. See Fig 6.



- 2. For the distance 62±5mm (Europe, China and Japan.)
- Step 1. Keep the electricity off. See Fig 7.
- Step 2. Remove the mounting plate by rotating the LCD part. See Fig 8.
- Step 3. Open the insulating cover. See Fig 9.



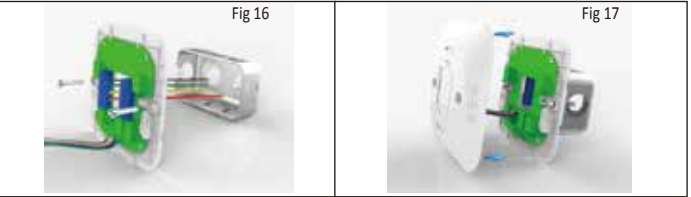
- Step 4. Connect power supply and load into the appropriate terminals. (see“Wiring your thermostat” for details and Fig 10).
- Step 5. Close the insulating cover and fix the mounting plate (the two holes inside) into the wall with screws in the box. See Fig 11.
- Step 6. Fasten body of thermostat and the mounting plate by rotating. See Fig 12.



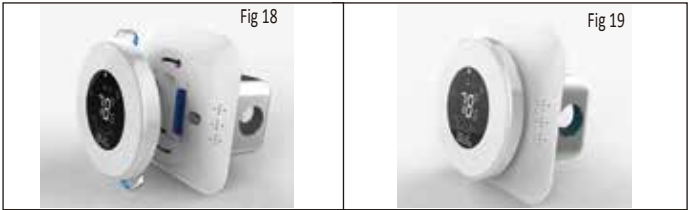
- 3. For the distance 86±3mm (USA and Italy etc.,)
- Step 1. Keep the electricity off. See Fig 13.
- Step 2. Remove the mounting plate by rotating the LCD part. See Fig 14.
- Step 3. Open the mounting plate by a slot screwdriver. See Fig 15.



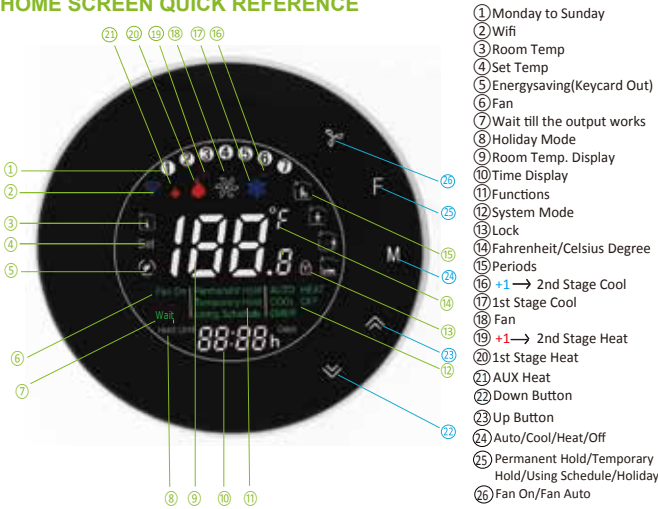
- Step 4. Connect power supply and load into the appropriate terminals.(see“Wiring your thermostat”for details and Fig 16).
- Step 5. Fix the mounting plate(the two holes outside) into the wall with screws in the box. See Fig 17.



- Step 6. Connect the front plate and mounting plate. See Fig 18.
- Step 7. Fasten body of thermostat and the whole mounting plate by rotating. See Fig 19.



HOME SCREEN QUICK REFERENCE



OPERATION

- 1. Setting the Fan**
Press to select the Fan Auto, Fan ON. Auto indicates fan is running its schedule; On indicates fan schedule is set to On.
- 2. Function and Programmable**
Press and hold to set the Permanent Hold, Using Schedule, Temporary Hold. These functions will appear on the screen.
Permanent Hold - Manual. In this mode, press to set temperature.
Temporary Hold. During Using Schedule or in this mode, press to set the temporary temp. It will be invalid till the start time of the next scheduled period.
Using Schedule. 5+1+1 four periods programmable.
Holiday Mode. Changes temperature setting for a designated number of days.
How to set your time?
Press and hold for 5 sec. till the min of time will flash;
Touch the icon to set your minute.
Then press , the hour of time will flash; Touch the icon to set your hour.
Then press , the week of time will flash; Touch the icon to set your week.
How to adjust your schedule?
After the above time setting, touch the icon appear(1 2 3 4 5 will show along the top of the screen). Use the and arrows to adjust the time for the 1st period(Get Up). Press the icon use the and arrows to set the temp. for the 1st period. Repeat this process for periods 2-4.
Get Up — Period when you awaken and want your home at a comfortable temperature.
Go Out — Period when you are away from home and want an energy-saving temperature.
Go Home — Period when you return home and want your home back to a comfortable temperature.
Sleep — Period when you are asleep and want an energy saving temperature.

Schedule Period	Time	Setpoints	
		Heat	Cool
Get Up	6:00 AM	72 ℉ (22 ℃)	72 ℉ (22 ℃)
		72 ℉ (22 ℃)	72 ℉ (22 ℃)
Go Out	8:00 AM	72 ℉ (22 ℃)	72 ℉ (22 ℃)
		72 ℉ (22 ℃)	72 ℉ (22 ℃)
Go Home	11:30 AM	72 ℉ (22 ℃)	72 ℉ (22 ℃)
		72 ℉ (22 ℃)	72 ℉ (22 ℃)
Sleep	01:30 AM	72 ℉ (22 ℃)	72 ℉ (22 ℃)
		72 ℉ (22 ℃)	72 ℉ (22 ℃)

- How to adjust your holiday?**
Press till the letters **Hold Until** displays and **days** flash on the screen then click and arrows to set the days of holiday. When the flashing of days stops, you can press and arrows to set the temp.. Holiday mode will be valid immediately.
- 3. Selecting System Mode**
Press to select the mode AUTO, COOL, HEAT, OFF, EMER.
HEAT — Thermostat controls the heating system.
OFF — Both heating and cooling systems are off.
COOL — Thermostat controls the cooling system.
AUTO — Thermostat automatically changes between heating and cooling operation, depending on indoor temperature.
EMER — Emergency heat cycles to maintain temperature.
- 4. Advanced Options**
Press and hold until 5 seconds in order to reach system functions. Then press to change the different items.

User Setup Number	Function	Setting and options	Default
1	Temperature calibration	-7 to -1℃ (-13 to -2 ℉)	-5
2	Temp. Difference for the change of system in auto mode	0 to 5℃ (0 to -9℉)	03
3	℉ or ℃	0:℃ setting 1:℉ setting	1
4	Filter change reminder	0~5 (month)	03
5	Min. Set Temp.	5 to 15℃ (41 to 59℉)	05
6	Max. Set Temp.	15 to 45℃ (59 to 113℉)	45
7	12/24 hours	0: 12h 1: 24h	1
8	O/B	0—changeover valve—O/B terminal is energized in cooling (factory setting) 1—changeover valve—O/B terminal is energized in heating	1
9	Date (year)	Select number of current calendar year (1-99)	19
A	Date (month)	Select number of current calendar month (1-12)	01
B	Date (day)	Select number of current calendar date (1-31)	1
C	Deadband Temp.	1 to 5℃ (2 to 9℉)	1
D	Backlight adjustment	3 ~ 99 (Brightness)	10
E	Delay setting for output	1~5 minute	01
F	Fan output (Heat)	0: Without Fan 1: With Fan	01

ABOUT WIFI

WI-FI CONNECTION

Before using your Wi-Fi thermostat for the first time, you must configure the Wi-Fi signal and srtings through your smartphone or tablet. This will allow communication between your connected devices.

Step 1 Download your APP (Fig 1-1)



For IOS devices, search for My BecaSmart in Apple Store and download. Alternatively, scan the relevent QR code here (Fig 1-2)
For Android devices, search for My BecaSmart in Google play and download. Alternatively, scan the relevent QR code here (Fig 1-3)

Step 2 Register your account

Open your BecaSmart, you will get a piece of notification (Fig 2-1)
Click Allow to go into your page of register (Fig 2-2). Press register and enter your phone no. or email (Fig 2-3) then you can get a verification code. Input your password and confirm (Fig 2-4) to complete your registration. If you have account, please log in.



Fig 2-1

Fig 2-2

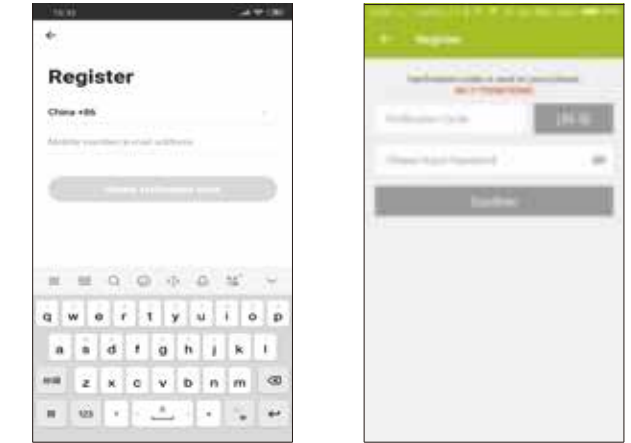


Fig 2-3

Fig 2-4

Step 3 Connect your Wi-Fi signal

On your thermostat
Press and hold the ⇩ arrow for eight (8) seconds. The backlight will be on and the icon 📶 will flash one time per sec..
The backlight will be on and the icon 📶 will flash one time per sec..

Then, go back to the home page of your app
Press the + on the upper right corner of the page (see Fig 3-1) to add your device. Click Confirm indicator rapidly blink (Fig 3-2) then select your network and back to your app to enter the password of your wireless router (Fig 3-3) and confirm. The app will connect automatically (Fig 3-4). This may typically take up to 5~90 seconds to complete. Your room name could be edited when the device is connected (Fig 4-4).

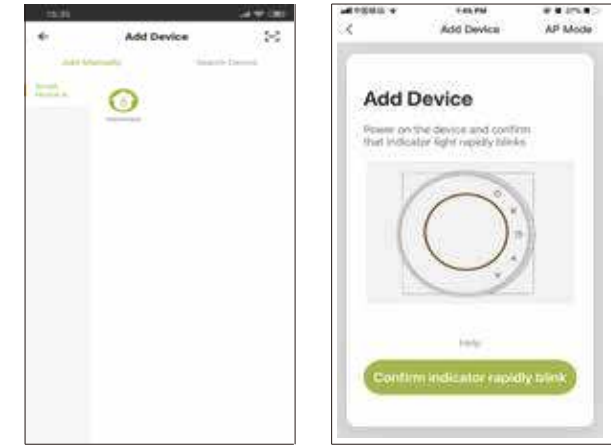


Fig 3-1

Fig 3-2

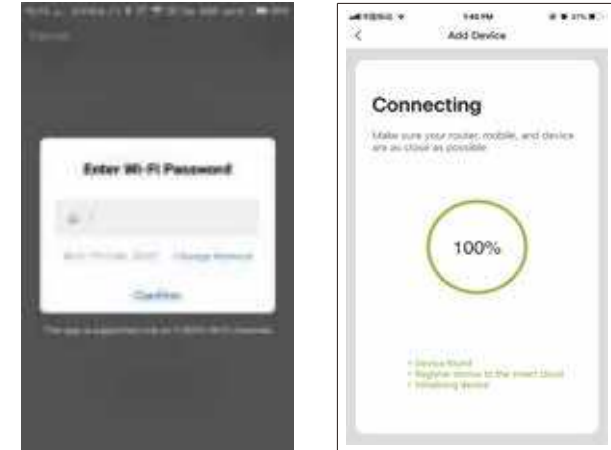


Fig 3-3

Fig 3-4

This is EZ mode which provides fast network connection between your app and your device. If your router doesn't support it or your wifi signal is weak or you can not connect by EZ mode, press the AP Mode on the upper right corner in Fig 3-2.
If you have connected your thermostat successfully, please ignore the AP setting as below.

On your thermostat
Press and hold the ⇩ arrow for eight (8) seconds. The backlight will be on and the icon 📶 will flash one time per sec..
Press and hold the ⇩ arrow for eight (8) seconds agian.
The icon 📶 will flash one time every (3) seconds.

Then, go back to the home page of your app
Click Confirm indicator slowly blink (Fig 4-1) then select your network and back to your app to enter the password of your wireless router (Fig 3-3) and confirm. The app will go into the page in Fig 4-2.
Press *Connect now* to select the wifi signal Smartlife-CE4A of your thermostat (Fig 4-3).
Go back to your app and click *Connect now* then the app will connect automatically (Fig 3-4)
This may typically take up to 5~90 seconds to complete.
Your room name could be edited when the device is connected (Fig 4-4).

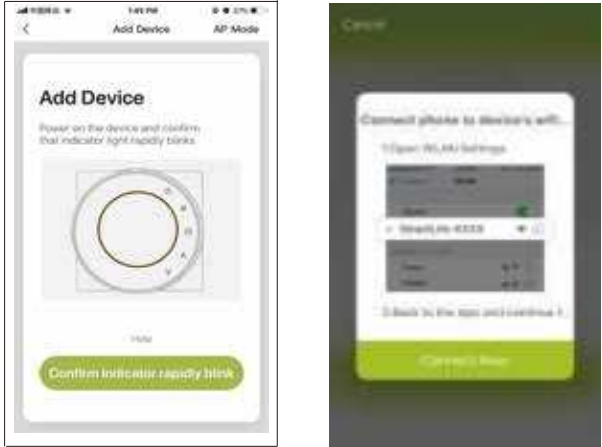


Fig 4-1

Fig 4-2

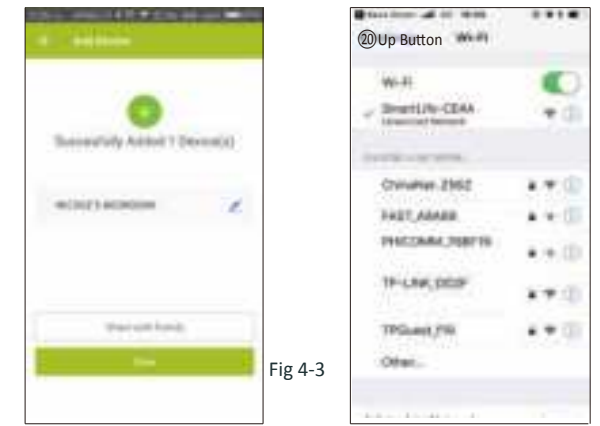


Fig 4-3

Fig 4-4

PROGRAMMING YOUR THERMOSTAT

When your room is established successfully, it will display on the home screen (Fig 5-1).Click the line into begining programming our thermostat.

- 🔌 Power on/off bution. When the screen is bright, it is power on; when the screen is dark, it is power off.
- ⚙️ This symbol represents function and you can choose Permanent Hold/Temporary Hold/Using Schedule/Holiday Hold.
- 📅 Mode,press it you can choose Auto/ Cool/Heat/Emەر/Off.
- ⚙️ This is the setting symbol. You can set the device name, location, greate group and so on.

- * Press - + to adjust the temperature. The adjusted temperature will be displayed at the application center interface.
- * When in Program mode, click on the setting symbol (at the bottom of the page) to be taken to the schedule page. (See Fig 5-2)
- * You can set the temperature for a week and for different periods of the day. (Fig 5-3)
- * Once your schedule has been set, click on SAVE and the app will send the programming to your thermostat and confirm the schedule has been saved.



Fig 5-1

Fig 5-2

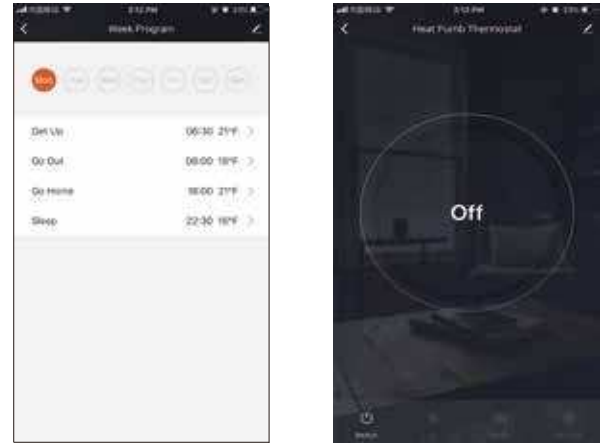


Fig 5-3

Fig 5-4

How to create a group?

Press 🏠 (5-4) then click Create Group (Fig 6-1).
Select all the rooms you want and confirm.

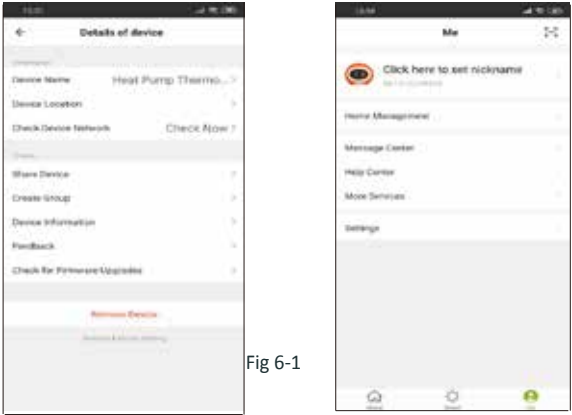


Fig 6-1

Fig 6-2

The one who create this group can control all the rooms at the same time.

Note
Except create the group, in this menu page, you can also modify your device name, share your device, get the information of your device.

How to share your device with your family member?
Way 1: Mentioned in the above.
Way 2: Click your Profile at the right bottom of your main page (Fig 6-2). Select Device Sharing then add the account you want to share. You can see the sharing account you have sent and the device you have shared in this sharing page. You don't need to do anything if you are the one shared. You can add as many as rooms you want.

How to connect your device to Amazon Echo or Google Home?
In your profile, click Intergration into the using page. Press *Use Now* > (Fig 7-1) for your Amazon Echo or Google Home or Tmall Genie or IFTTT then you can see the operation steps.

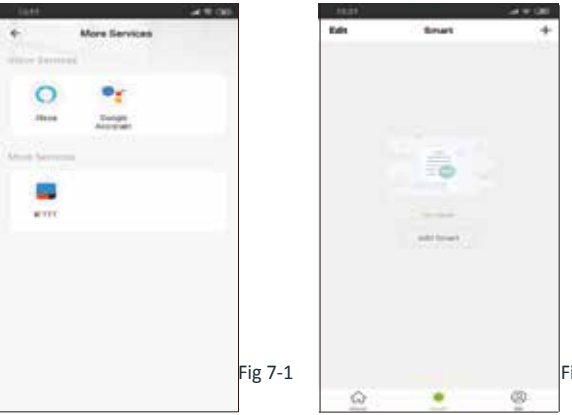


Fig 7-1

Fig 7-2

Scan the following QR code to see user guide of Amazon Echo, Google Home and IFTTT.



What is your Smart Scene and How to use it?
Customize your own personal scenes to suit your needs.For example, set your home to automatically turn on thermostat on when you back home (Fig 7-2).Press + button into the setting.
Step 1: You can set a condition for Task like Temperature below 20 degree,then click Save.(Condition:Temp.,Humidity,Wether,PM2.5, Air Quality,Sunrise/Sunset,Device)
Step 2: Add a task. Press + to Select Device (Power,Set Temp,Lock Mode) to act, then Save.If you want to delete the scene,you can press Delete in the end.
NOTE: The room sound could be turned on/off in PROFILE-SETTING-SOUND. The sound is matched with the default of your system .

SIMPLE EXCEPTION HANDLING

No.	Phenomenons	Handling
1	Power is on but without display.	* Check if the terminals between LCD panel and Power Unit Box is loosen.
2	Without output but display works.	* Use a new LCD panel or new Power Unit Box to replace the old one.
3	Room Temp. Is a little different from the actual.	* Do temperature calibration in item 1 of high senior options

SERVICE
Your thermostat carries an 24 months warranty from date of purchase. Service outwith the warranty period may incur a charge. More detail please contact with us directly.