



With your inspiring rating, COSTWAY will be more consistent to offer you EASY SHOPPING EXPERIENCE, GOOD PRODUCTS and EFFICIENT SERVICE!

Mit Ihrer inspirierenden Bewertung wird COSTWAY konsistenter sein, um Ihnen EIN SCHÖNES EINKAUFSERLEBNIS, GUTE PRODUKTE und EFFIZIENTEN SERVICE zu bieten!

Avec votre évaluation inspirante, COSTWAY continuera à fournir une EXPÉRIENCE D'ACHAT PRATIQUE, des PRODUITS DE QUALITÉ et un SERVICE EFFICACE !

Con su calificación i nspiradora, COSTWAY será más consistente para ofrecerle EXPERIENCIA DE C OMPRA F ÁCIL, BUENOS PRODUCTOS y SER VICIO EFICIENTE.

Con la tua v alutazione incoraggiante, COSTWAY s arà più coerente per o ffrirti ESPERIENZA DI ACQUISTO FACILE, BUONI PRODOTTI e SERVIZIO EFFICIENTE!

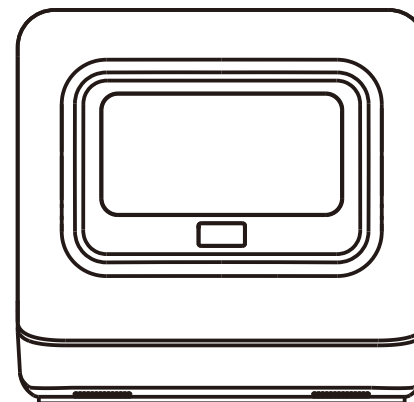
Dzięki twojej opinii COSTWAY będzie mógł oferować jeszcze WYGODNIEJSZE ZAKUPY, LEPSZE PRODUKTY i SPRAWNIEJSZĄ OBSŁUGĘ KLIENTA.

US office: Fontana

UK office: Ipswich

DE office: FDS GmbH, Neuer Hölthbaum 36, 22143 Hamburg, Deutschland

FR office : 26 RUE DU VERTUQUET, 59960 NEUVILLE EN FERRAIN, FRANCE



USER'S MANUAL

DISH WASHER
FP10015



Every appliance have passed the water test in factory.
It is normal if you found some water left in appliance.
Please feel free to use it

Please read this instruction carefully before using and keep it safe.

CONTENTS

Important Safety Instructions

Product Overview

- Parts of Dishwasher
- Technical Information
- Package List

Installation Instructions

- Installation diagram
- Installation steps
- Installation of water tank

Operating Instructions

- Control panel
- Overview of programmes
- Adding detergent
- Utensils selection
- Tableware placement attention
- The use of basket

User–Maintenance Instructions

- Clean the filter assembly
- Clean the spray arms
- Clean dishwasher interior

Service Information

- Error code list
- Common fault approach
- Circuit diagram
- After sales service

IMPORTANT SAFETY INSTRUCTIONS

WARNING – When using your dishwasher, follow basic precautions, including the following:

- Read all instructions before using the dishwasher.
- Use the dishwasher only for its intended function.
- Use only detergents or wetting agents recommended for use in a dishwasher and keep them out of the reach of children.
- When loading items to be washed:
 - 1) Locate sharp items so that they are not likely to damage the door seal; and
 - 2) Load sharp knives with the handles up to reduce the risk of cut-type injuries.
- Do not wash plastic items unless they are marked "dishwasher safe" or the equivalent. For plastic items not so marked, check the manufacturer's recommendations.
- Do not touch the heating element during or immediately after use.
- Do not operate your dishwasher unless all enclosure panels are properly in place.
- Do not tamper with controls.
- Do not abuse, sit on, or stand on the door or dish rack of the dishwasher.
- To reduce the risk of injury, do not allow children to play in or on a dishwasher.
- Under certain conditions, hydrogen gas might be produced in a hot-water system that has not been used for two weeks or more. HYDROGEN GAS IS EXPLOSIVE. If the hot-water system has not been used for such a period, before using the dishwasher turn on all hot-water faucets and let the water flow from each for several minutes. This will release any accumulated hydrogen gas. As the gas is flammable, do not smoke or use an open flame during this time.
- Remove the door to the washing compartment when removing an old dishwasher from service or discarding it.
- Do not run the appliance in a humid environment in case of triggering electricity leakage or getting rusty.
- Tableware may be hot after washing in the appliance, please remove them around 30 minutes after procedure ends.
- The appliance runs automatically. Do not inject or pour water into the appliance during working in case of overflowing and causing malfunctions.
- Do not move or tilt the appliance during working in case of triggering water or electricity leakage.
- Do not open the door of dishwasher in case hot steam in it may get you injured. For putting in or taking out tableware, please press stop button, open a gap to let out steam and wait for 10 seconds.
- Children should not play with the dishwasher. Keep them away from the appliance especially when the door of it is open.
- Unplug the plug from wall socket and disconnect the water pipes for not using in a long time.

- Do not clean the dishwasher with corrosive detergent in case of damaging it.
- Do not use detergents other than exclusive ones for dishwasher.
- Cut the ribbon on the power cord and the water pipe with flat scissors when unpacking the package in case of hurting the pipes and cords.
- Use warm/cold water as water source. Please use the rated water temperature of 120 F.
- Protective plastic bags should be kept from children and cut them into pieces for dispose.
- Do not disassemble the appliance by yourself.
- Plug the appliance into a grounded socket. A grounded socket can reduce the current at most when there is a accidental electricity leakage which it can protect the user at most.
- Do not use the appliance during thunderstorm.
- The drain pipe should not be hung more than 40cm (15.7") over the appliance. Doing so may cause drain pipe blockage, water or electricity leakage.
- Check if the appliance is installed well before running the appliance, please check if the water pipes and power cord is connected properly.
- Tableware with sharp end should be placed downward to avoid hurting users when taking them out.
- Do not operate the appliance if its power cord is damaged, please contact customer service for help.
- Do not keep the door of appliance open in case of it falling due to the imbalance.
- Do not cover the wall socket with any foreign objects. Do not connect the appliance to a outer timer, plug it into a multi-slot socket or a socket that is not grounded.
Doing so may cause damage or injuries.
- Dishwasher detergent and polishing detergent should be placed beyond children's reach due to the danger of children playing or accidentally eating these acidic/alkaline detergent.

GROUNDING INSTRUCTIONS

This appliance must be grounded. In the event of a malfunction or breakdown, grounding will reduce the risk of electric shock by providing a path of least resistance for electric current. This appliance is equipped with a cord having an equipment-grounding conductor and a grounding plug. The plug must be plugged into an appropriate outlet that is installed and grounded in accordance with all local codes and ordinances.

WARNING – Improper connection of the equipment-grounding conductor can result in a risk of electric shock. Check with a qualified electrician or service representative if you are in doubt whether the appliance is properly grounded. Do not modify the plug provided with the appliance, if it will not fit the outlet, have a proper outlet installed by a qualified electrician.

Please do not use power strip

SAVE THESE INSTRUCTIONS

CONSIGNE DE SÉCURITÉ IMPORTANTES

Veuillez lire attentivement avant l'installation et la première utilisation,

Cet appareil est destiné à être utilisé dans des applications domestiques et similaires telles que:

- les cuisines du personnel dans les magasins, les bureaux et autres environnements de travail;
- maisons de ferme;
- par les clients des hôtels, motels et autres environnements de type résidentiel;
- environnements de type chambre d'hôtes.

Et le lave-vaisselle ne peut être utilisé que pour laver les ustensiles ménagers.

Le lave-vaisselle sera endommagé ou l'utilisateur sera blessé si l'opération est incorrecte.

- Veuillez contacter immédiatement le service après-vente en cas de panne de l'appareil. Ne remontez pas et ne fixez pas l'appareil vous-même.
- Veuillez contacter le service après-vente ou le service de maintenance désigné par le vendeur pour la réparation ou le déplacement si le cordon d'alimentation est endommagé.
- La source d'alimentation du lave-vaisselle doit adopter une ligne de terre pour plus de sécurité.
- Cette adoption protégera au maximum la personne qui est choquée par une fuite.
- Débranchez le cordon d'alimentation par temps d'orage.
- Après l'installation, veuillez-vous assurer que la connexion de l'eau et de l'électricité est bien connectée avant de l'utiliser.
- La position d'installation du tuyau de drainage ne peut pas dépasser 40 cm plus haut que le haut de l'appareil, ce qui entraînera un mauvais drainage, des fuites électriques et des fuites d'eau.
- Les couteaux et autres ustensiles pointus doivent être chargés dans le panier avec leur pointe vers le bas ou placés en position horizontale.
- Ce lave-vaisselle est un appareil automatique, n'ajoutez pas d'eau manuellement lorsque l'appareil fonctionne. Cela entraînera un débordement et un danger.
- Ne déplacez pas et ne nettoyez pas l'appareil lorsqu'il fonctionne. Cela pourrait provoquer des fuites d'électricité ou d'eau.
- N'ouvrez pas la porte pendant le fonctionnement car la vapeur vous blesserait. S'il est nécessaire de charger ou de décharger certains ustensiles, veuillez appuyer sur le bouton de pause et attendre 10 secondes, puis ouvrez légèrement la porte et attendez que la vapeur se dissipe complètement, puis ouvrez la porte et déplacez vos ustensiles.
- Veuillez utiliser des détergents spécialisés. N'utilisez pas de liquide vaisselle, de lessive, de savon pour les mains ou d'autres détergents non spécialisés pour lave-vaisselle.
- N'essayez pas d'utiliser cet appareil dans un endroit humide. Une humidité élevée fera rouiller l'appareil et favorisera les fuites.

- Le détergent doit être placé à un endroit que les enfants ne peuvent pas atteindre puisque les détergents contiennent des acides et des alcalins, qui sont vraiment dangereux pour les enfants.
- Les ustensiles seront chauds après le lavage, veuillez les retirer après 30 minutes.
- Veuillez conserver l'appareil à température ambiante pendant 8 heures après avoir reçu le produit en hiver, pour éviter que des gouttelettes n'apparaissent sur la surface du verre et endommagent l'appareil.
- L'appareil doit être raccordé au réseau d'eau à l'aide de nouveaux ensembles de tuyaux. Les anciens ensembles de tuyaux ne doivent pas être réutilisés.
- Lors de l'installation, l'alimentation électrique ne doit pas être pliée ou aplatie excessivement ou dangereusement.
- Veuillez utiliser des ciseaux plats pour couper le lien des conduites d'eau et des lignes électriques lors du déballage des boîtes.
- Placez l'appareil à l'emplacement souhaité. Vérifiez que la machine a été mise à niveau.
- Veuillez ne rien mettre d'autre de chaque côté, les ouvertures ne doivent pas être obstruées par un tapis.
- Utilisez de l'eau froide ou de l'eau tiède ne dépassant pas 49°C
- Cet appareil n'est pas destiné à être utilisé par des personnes (y compris des enfants) ayant des capacités physiques, sensorielles ou mentales réduites, ou un manque d'expérience et de connaissances, à moins qu'elles n'aient reçu une supervision ou des instructions concernant l'utilisation de l'appareil par une personne responsable de leur sécurité. Les enfants doivent être surveillés pour s'assurer qu'ils ne jouent pas avec l'appareil.
- Si le cordon d'alimentation est endommagé, il doit être remplacé par le fabricant, son agent de service ou des personnes de qualification similaire afin d'éviter tout danger.
- La porte ne doit pas être laissée en position ouverte car cela pourrait présenter un risque de trébuchement
- Veuillez garder les enfants à l'écart du lave-vaisselle, surtout lorsque la porte est ouverte.
- Après avoir utilisé l'appareil, veuillez couper l'eau.

AVERTISSEMENT : Lors de l'utilisation du lave-vaisselle, suivez les précautions suivantes :

- a) Lisez toutes les instructions avant d'utiliser le lave-vaisselle.
 - b) N'utilisez que des détergents recommandés pour une utilisation dans un lave-vaisselle et gardez-les hors de portée des enfants.
 - 1) Localisez les objets pointus pour qu'ils ne risquent pas d'endommager le joint de la porte ;
 - 2) Chargez les couteaux tranchants avec les poignées vers le haut pour réduire le risque de blessures de type coupure.
 - c) Ne lavez pas d'articles en plastique à moins qu'ils ne portent la mention «Va au lave-vaisselle» ou l'équivalent. Pour les articles en plastique non marqués, consultez les recommandations du fabricant.
 - d) Ne touchez pas l'élément chauffant pendant ou immédiatement après l'utilisation.
 - e) Ne déplacez pas votre lave-vaisselle en cours d'utilisation.
 - f) Ne modifiez pas les commandes.
 - g) Ne pas s'asseoir ou se tenir debout sur la porte ou le panier à vaisselle du lave-vaisselle.
 - h) Pour réduire le risque de blessure, ne laissez pas les enfants jouer dans ou sur un lave-vaisselle.
 - i) Dans certaines conditions, de l'hydrogène gazeux peut être produit dans un système d'eau chaude qui n'a pas été utilisé pendant deux semaines ou plus. **LE GAZ HYDROGÈNE EST EXPLOSIF.**
- Si le système d'eau chaude n'a pas été utilisé pendant une telle période, avant d'utiliser le lave-vaisselle, ouvrez tous les robinets d'eau chaude et laissez l'eau s'écouler de chacun pendant plusieurs minutes. Cela libèrera tout l'hydrogène gazeux accumulé. Le gaz étant inflammable, ne fumez pas et n'utilisez pas de flamme nue pendant ce temps.
- j) Retirez la porte du compartiment de lavage lors de la mise hors service d'un ancien lave-vaisselle ou de sa mise au rebut.

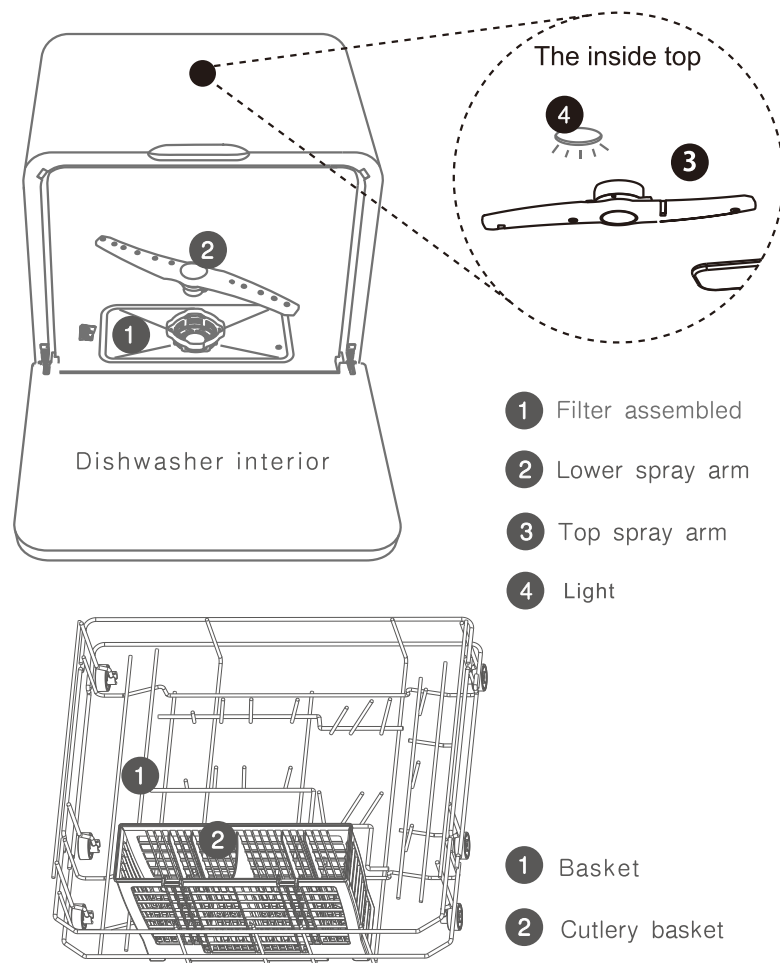


Prise de terre

- Cet appareil doit être mis à la terre. En cas de dysfonctionnement ou de panne, la mise à la terre réduira le risque de choc électrique en fournissant un chemin de moindre résistance au courant électrique. Cet appareil est équipé d'un cordon avec un conducteur de mise à la terre de l'équipement et une fiche de mise à la terre.
- La fiche doit être branchée dans une prise appropriée installée et mise à la terre conformément à tous les codes et règlements locaux.
- Une mauvaise connexion du conducteur de mise à la terre de l'équipement peut engendrer un choc électrique
- Vérifiez auprès d'un électricien qualifié ou d'un représentant de service si vous n'êtes pas sûr que l'appareil soit correctement mis à la terre. Ne modifiez pas la fiche fournie avec l'appareil ; S'il ne rentre pas dans la prise. Faites installer une prise appropriée par un électricien qualifié.
- Veuillez ne pas utiliser de multiprise.

Product Overview

● Parts of Dishwasher



(Pictures for reference only, The actual product shall govern.)

● Technical Information

Capacity	2 Place settings + 6 Serving pieces		
Waterproof	IPX1	Nominal voltage	AC120V
Rated power	785W	Frequency	60Hz
Water pressure	5.8–145PSI	Inlet water temperature	≤ 120°F
Outline size	17.8"W x 16.2"D x 19.3"H		
Implementation standards	UL749		

*Due to the continuous improvement of products, such as the technical parameters in this manual are modified without prior notice.

● Package List

*Please check the accessories one by one after you open the box. Please contact the seller if there is any shortage or damage.

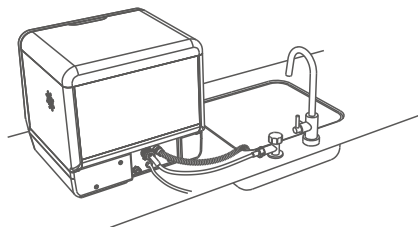
Name	Quantity	Name	Quantity
Complete appliance	1	Inlet hose	1
Basket	1	Clamping band	1
Cutlery basket	1	Drain hose	1
User instruction	1	Water tank accessory	1

*NOTICE:

Please use flat scissors to cut the tie of water pipes and power lines.

INSTALLATION INSTRUCTIONS

● Installation diagram



Running water inlet

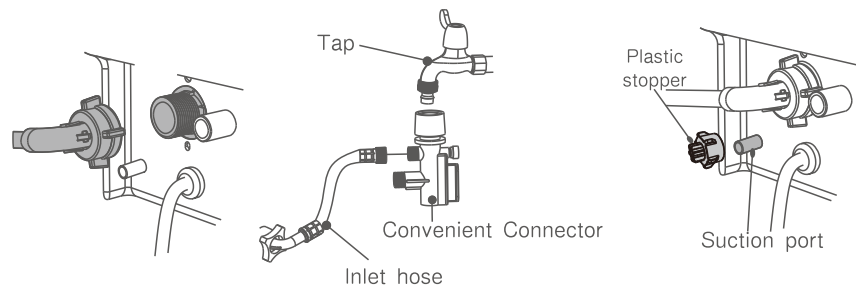
This method is applicable for the kitchen with great condition that hoses and cords are placed well. Detail steps **1** and **2** are listed below.

NOTICE:

A hose that attaches to a sink spray can burst if it is installed on the same water line as the dishwasher. If your sink has one, it is recommended that the hose be disconnected and the hole plugged.

Installation steps

1 Installation of inlet pipe

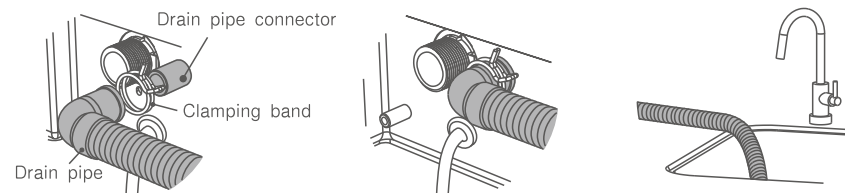


1. Connect inlet pipe to inlet valve.

2. Please connect the narrower end of the hose on the tap.

3. For this way of injecting water please tighten the stopper on the suction port to avoid leakage from it.

2 Installation of drain pipe



1. Connect the drain and drain port

2. The drain pipe should be fixed by the clamping band

3. Please put the free end of the drain pipe into the sink or sewer.

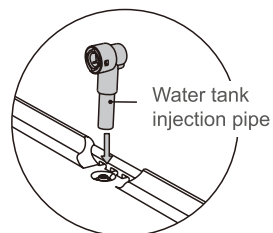
Notes:

1. Water injected into the dishwasher should be at temperature lower than 120° F.
2. A hose that attaches to a sink spray can burst if it is installed on the same water line as the dishwasher. If your sink has one, it is recommended that the hose be disconnected and the hole plugged.
3. The inlet pipe and drain pipe can not be folded, otherwise may affect the washing effect.
4. Ensure that the appliance is situated securely on the floor; otherwise it will cause overflow and electric leakage. Take the package out from appliance.
5. After installation, please retain all documents and components for later use or for the subsequent owner.

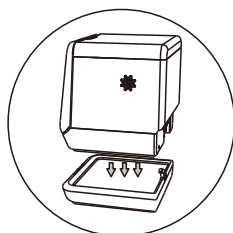
WARNING: Certain internal parts are intentionally not grounded and may shock only during servicing. Service Personnel-Do not contact the following parts while the appliance is energized: drain pump, PTC heater.

● Installation of water tank

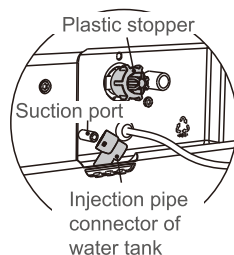
In addition to the previous installation mode of suctioning water, you can also choose this installation mode of water tank, as shown in the following steps.



1. Insert the injection pipe of water tank into injection of the water tank as showed above.



2. After placing the water tank on the table horizontally, put the dishwasher onto it aligned with the groove.

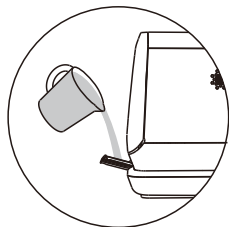


3. Put the injection pipe connector of water tank onto the suction port of dishwasher, put the plastic stopper on the injection port in case of leaking of water.

● Water tank use

Notes:

- Before pouring water into the water tank, Please check if the appliance is on, both the drain and inlet hose is connected well.



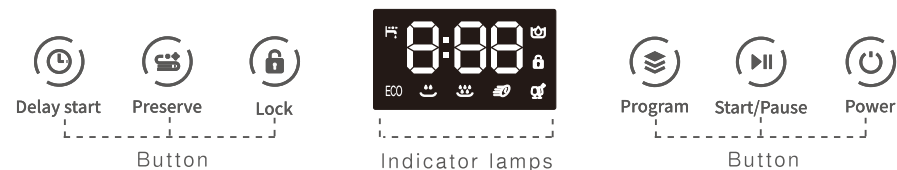
1. Open the drawer of the water tank and pour water into it. Pay attention to control the speed of pouring water in case of spilling.



2. When pouring water into the tank, the appliance will beep and the icon marked above will light up if the water tank is full. Stop adding water and push the drawer back to the appliance.

OPERATING INSTRUCTIONS

● Control panel instruction



1 Operate the dishwasher

Close the door of the dishwasher and start the appliance by pressing (Power) for one second.



Power



Program

Change wash programme with (Program) button. Please select a suitable programme.

The indicator lamps flash, it means the dishwasher is working.



Indicator lamps



Start/Pause

Start wash programme by pressing (Start/Pause) button.

2 Overview of programmes



Delay start

You can delay the start of the programme by up to 24 hours.



Power



Program



Delay start



Cyclic display



Start/Pause

Start the appliance → Select suitable programme → Press (Delay start) button, the display repeatedly shows H:00 H:01...H:24. Select delay start time. If press (Delay start) for 3 seconds, the screen will be reset to H:00, which means no preselection.



Lock

It means button lock. You can protect the appliance from unexpected termination of the programme (e.g. improper operation by children).

Activating the button lock: Hold down the button (Lock) for 3 seconds until the icon (Lock) is indicated on the digital display.

Deactivating the button lock: Hold down the button (Lock) for 3 seconds until the icon (Lock) goes out.



Preserve

The Preserve program is able to preserve tableware with great air ventilating conditions which can prevent tableware from getting mildewed, damp or bad smell. After finishing washing procedure, "on" shows on the screen and it means that the dishwasher is working at Preserve program which will last for 24 hours. To stop the Preserve program, press the "Preserve" button until "OFF" shows on the screen.

The indicator lamp (Water shortage icon) means water shortage. The icon (Water tank full icon) means that water in the water tank is full.

● Overview of programmes

Special dishwasher detergent will remove oil and food residues. It is a must every time you use the appliance. Detergent dosage depends on the amount of and type of soiling.

Programme	Type of soiling	Consumption of detergent		Time cycle
		washing powder	washing tablet	
ECO	Part dried, common household food remnants	9g	1pc	2:25
Normal	Little dried, normal household food remnants	9g	1pc	1:00
Intensive	Very adhesive burned-in or dried-on food remnants	9g	1pc	2:00
Rapid	Fresh food remnants, Light and less oil.	—	—	0:35
Glass	Slightly adhesive, temperature-sensitive plastic and glasses	9g	1pc	1:30

*Notes: Please don't overuse the detergent. Excessive detergent will not only produce a lot of bubbles, but also affect the cleaning effect.

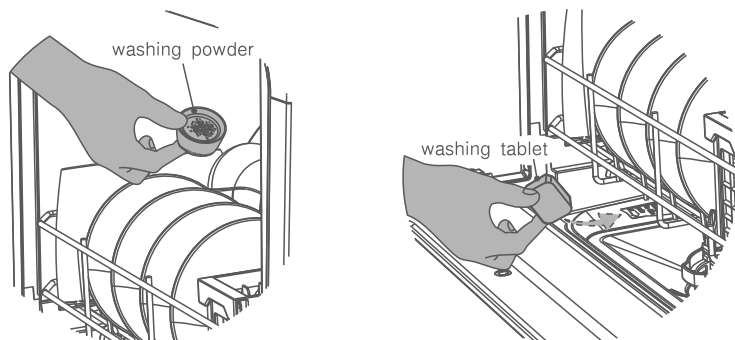
Please choose the suitable washing tablet, you should use the small one for this appliance.

The actual runtime of each program is possibly different from the preset time cycle due to the water temperature, the amount of utensils, the type of soiling and the recovery of water softening. It is a normal condition, please use it with confidence.

● Adding detergent

Add the required amount of detergent **after the basket is pushed in**.

Please put the detergent in the designated place.



● Utensils selection

Dishwasher-proof utensils:



Ceramic tableware



Glassware



Stainless steel tableware

Utensils notes:

1. Precious metal, aluminium and colored glaze utensils may turn cloudy after being washed in a dishwasher.
2. Cutlery made of bamboo or wood: It may come loose or crack at high temperatures.
3. Plastic items: Please see manufacturer's instructions for plastic cutlery or items with plastic parts, because these items may come loose or crack at high temperature.
4. Cleaning cloth: Cleaning cloth may cause dishwasher fault.
5. Cast iron items: Cast iron items may rust after being washed in a dishwasher.

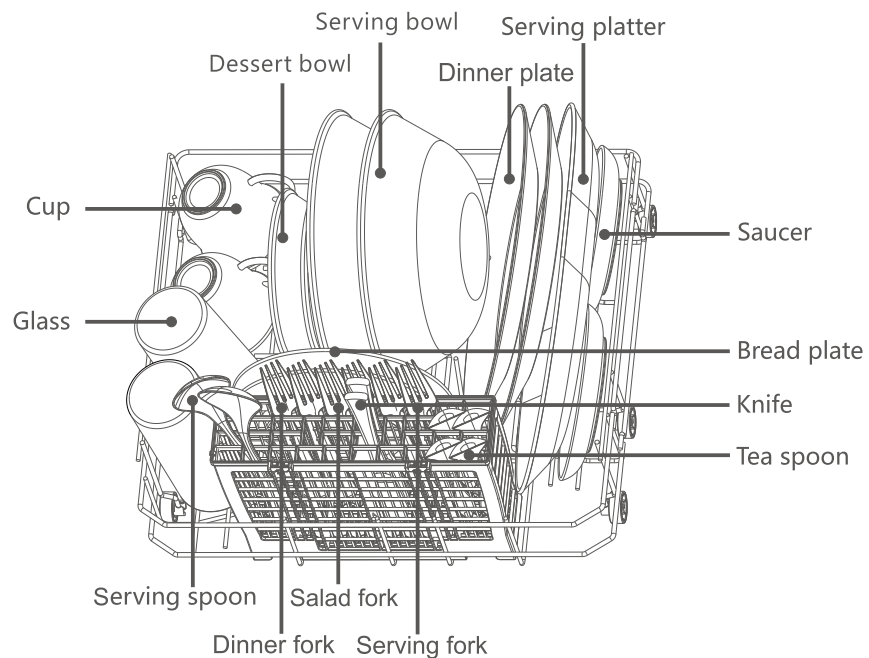
● Tableware placement attention

1. Remove large food remnants such as bones or leaves;
2. All utensils with dirt should be face down. If their opening face or closing face down will leave the water on the top.
3. Utensils are secure and cannot tip over, one place for one utensil.
4. Do not let the utensils out of basket to obstruct rotation of spray arms.
5. The small size of utensils might drop out from the basket and obstruct the spray arms rotation. Please do not put these small items in the appliance.
6. When pushing basket back, do not let the sharp parts of utensils cut the seal.
7. The top coat of basket can not be scratched, or it will be rusted.
8. Place cutlery, always unsorted with the tips face down, in the cutlery basket.

TIPS:

Flip the spray arm after the basket is pushed in. to check if the spray arm still can be rotated.

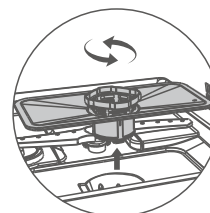
● Loading the basket



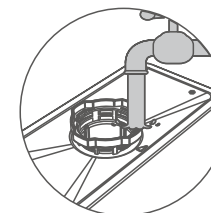
USER-MAINTENANCE INSTRUCTIONS

● Clean the filter assembly

After appliance ran a while, there will be some residue and other things left in it. Please clean it when you see the residue and things, also clean the appliance immediately.

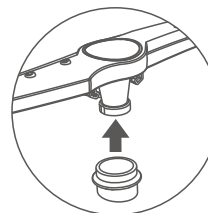


A Make sure that the power is turned off. Rotate the filter assembly counterclockwise to remove it for cleaning. And turn it clockwise to put the filter assembly back in place.

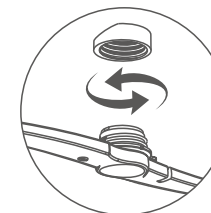


B Rinse the filter assembly with running water, do not use steel wool or iron brush, otherwise it will scratch the filter and cause it to rust.

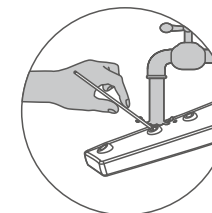
● Clean the spray arms



A Pull out the main basket from the appliance, and then slightly raise the lower spray arm to prevent the clip from falling.



B Rotate the upper sprayer counterclockwise to remove. And turn the spray arm clockwise to put it back.



C Check whether the spray arm is blocked. If so, use a thin wire to pull out the blockage or flush the hole with water.

● Clean dishwasher interior

Leaking seals and door seals should be cleaned with a damp cloth. To clean the dead corners inside the dishwasher, please clean it with citric acid and a damp cloth. Please use a special detergent to clean the liner and internal pipes of the dishwasher according to the instructions.

Service Information

● Error code list

Error code	Cause	Remedy
E01	Thermistor short circuit	Please contact the after-sales service department
E02	Thermistor open circuit	Please contact the after-sales service department
E03	The machine is not heated	1. Please make sure the utensils be placed correctly. If the utensils are facing up and there is water in the plates/bowls, the dishwasher indicates a lack of water. 2. Please contact the after-sales service department
E04	Inlet valve failure	Please contact the after-sales service department
E05	Overflow	1. Lean the appliance about 30 to 45 to pour out the water in the bottom plate, 2. Check if the drainage pipe is placed too high, 3. Check if the pipe is knotted blocked or pressed, 4. Check if the appliance is placed correctly 5. Exclude above cause, try to restart the appliance Please contact the after-sales service department.
E06	Heating function abnormal	Please contact the after-sales service department
E10	Water inflow abnormal	1. The tap was not fully opened. 2. Small inflow and low water pressure. 3. Start-up multiple times in case of water shortage. 4. Please contact the after-sales service department.

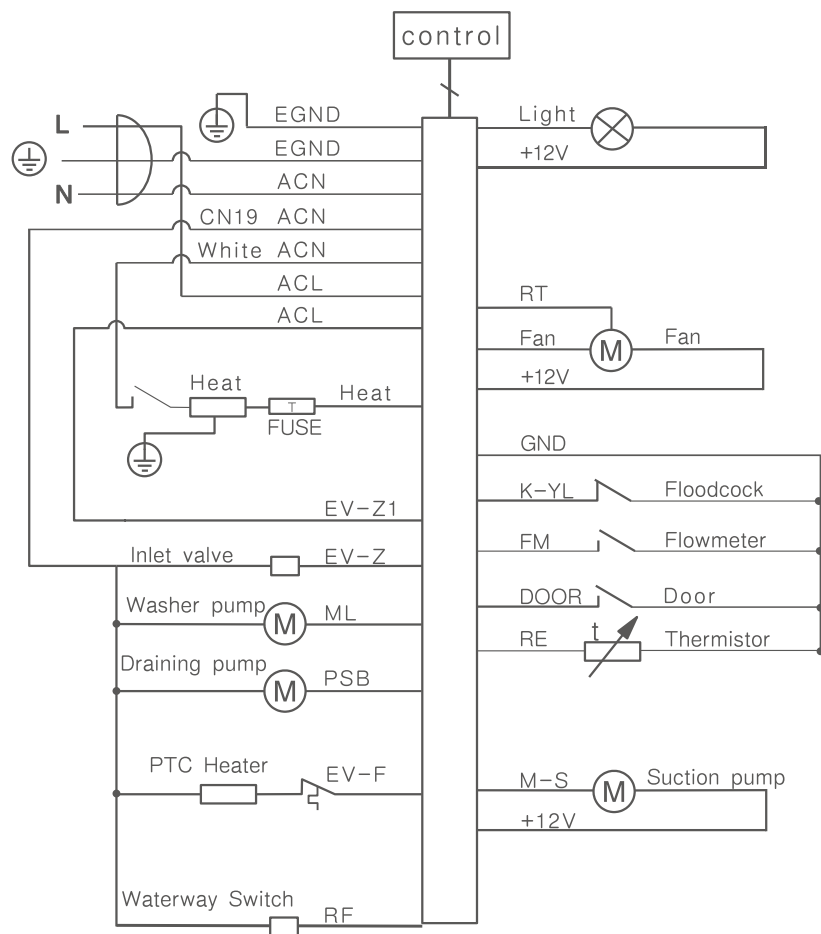
● Common fault approach

Problem	Cause	Remedy
The washing powder and washing tablet have not been cleaned up	1. The holes of spray arm has been blocked, the washing powder can not be flushed out.	Clean the holes of spray arms and run the quick wash mode again to clean the utensil.
	2. Put too much washing power.	Run the quick wash mode again and put mode rate washing powder as instructed next time.
	3. Used low-quality washing power	Use specialized washing powder and washing tablet with quick wash mode to wash the utensil again
	4. Improper placement of detergent	Refer to section "Adding detergent"
Some drops in the inner of liner	It's normal and it won't impact the utensil	
Some foam in the liner	Didn't use specialized washing powder or put too much washing powder in it	If there is not too much foam, you can open the door to make the foam less and less, if there is too much foam, you can use a tool to remove it. Finally, restart any program for about 3 minutes, and then execute it again until the bubbles disappear.
Utensils is wet	1. Utensils be piled up and without lean	Refer to utensils place rule
	2. The washing process is still running	Wait until process finished
	3. Programme selected without drying	Select programme with drying (See overview of programmes.)

Problem	Cause	Remedy
Appliance makes the noise as blowing something when is plugging. And the display shows "FAN".	The air renewal system is working	It's normal situation
No reaction after turning on the power	1. If all the lights were off and no reflection when you press the button, there are possibilities that you didn't plug in the power or the power was blackout.	Please plug the power in and make sure the power has no issue.
	2. Power is cut off	Clean the power plug and make sure it's dry
	3. All the lights are on, it might be on the childproof locking mode.	Unlock the childproof lock
	4. The time that touch power icon is too short.	Press the power icon for 1 second
Have no reaction when pressing any button except the power button.	1. Have not closed the door.	Close the door.
	2. There are greasy dirt or water on the glass and hand.	Clean the power plug and make sure it's dry.
	3. All the lights are on, it might be on the childproof locking mode.	Unlock the childproof lock
	4. PCB lock of door is broken	Please contact the after sales service department.
The water light in control panel is lighting when water comes in.	1. Check if the water supply have problem	Make sure the water supply have no problem
	2. The flowmeter is broken	Please contact the after sales service department.
	3. The filling valve is broken	Please contact the after sales service department.
The water light in control panel is lighting when water comes in from the Suction pump.	1. There is no water in the container or the suction pipe is not in the water.	Please add water to the container and make sure the suction pipe is in the water
	2. Dirty clogging of suction pipe filter	Clean the filter screen of the suction pipe
	3. The filling valve is broken	Please contact the after sales service department.
The water intake time is longer when water comes in from the suction pump	It's normal and be free to use	/
Have crashing noise when it is working	Place the utensil in improper way, some utensils are obstructing the spray arms; or some utensils are crashing each other.	Unload the dishwasher and replace the utensils in proper way
The utensil was not cleaned up	1. Utensils be piled up and without lean	Refer to utensils place rule
	2. Do not choose the right programme of washing	Please choose the right programme of washing
	3. Do not use specialized washing powder or put too little of washing power.	Use specialized washing powder and put enough of it before washing
	4. Do not install the filter in right position and the food remnants get in it	Re-install the filter in right position
	5. The spray arms were blocked	Clean the inner part of spray arms
	6. The spray arms are stuck	Check if the spray arm is stuck by the utensil
	7. Some food remnants are sticking on the utensil	Soak the utensil for a while before washing
	8. Black out when the appliance is working	Restart the washing programme
	9. Some food remnants are too hard to wash	Suggest wash utensil with steel wool before put it in appliance to wash
A lot of water was left in appliance when is not working	1. The position of drainage pipe is too high	Refer to drainage pipe installation
	2. The drainage pipe is tied, blocked or pressed by something heavy	Untie the pipe and remove the heavy thing
	3. Drainage pump is broken	Please contact the after sales service department.
	4. The filling valve is broken	Please contact the after sales service department.

If the solutions above can not fix the problems, please stop to use appliance immediately and cut off the power and water supply. Please contact the after-sales department.

● Circuit diagram



STATEMENT :

With the innovation and improvement of product technology, the product specifications of the same model as this product may be changed, and the change part will be notified without further notice.

The pictures of the products in the instruction are all borrowed from the appearance of the dishwasher, and the pictures are only used as an example. The actual appearance should be based on the purchased products.

As a result of product improvement, the execution standards of product manufacturing may be changed, and the revised standards of execution will be changed.

There is no retroactive effect on the sold product.