



PUBLIC

SAP Analysis for Microsoft Office

Document Version: 2.8 SP11 – 2021-10-21

What's New Guide

Content

- 1 About this guide 3**
- 2 About the documentation set. 4**
- 3 What's New in Administration. 6**
 - 3.1 Installing Analysis 2.8. 6
 - 3.2 Connections. 7
- 4 What's New in Analysis Plug-in. 8**
 - 4.1 Working with the design panel. 8
 - 4.2 Working in formula-optimized mode. 10
 - 4.3 Prompting. 11
 - 4.4 Customizing the user interface. 12
 - 4.5 Online Help. 13
- 5 What's New in Analysis 2.8 SP1. 17**
- 6 What's New in Analysis 2.8 SP2. 19**
- 7 What's New in Analysis 2.8 SP3. 20**
- 8 What's New in Analysis 2.8 SP4. 23**
- 9 What's New in Analysis 2.8 SP5. 24**
- 10 What's New in Analysis 2.8 SP6. 25**
- 11 What's New in Analysis 2.8 SP7. 26**
- 12 What's New in Analysis 2.8 SP8. 28**
- 13 What's New in Analysis 2.8 SP9. 29**
- 14 What's New in Analysis 2.8 SP10. 30**
- 15 What's New in Analysis 2.8 SP11. 31**

1 About this guide

The What's New guide for SAP Analysis for Microsoft Office provides a complete list of the new and modified features for SAP Analysis since the previous release. It also comprises a list of all new and changed administration tasks for SAP Analysis.

2 About the documentation set

The documentation set for SAP Analysis for Microsoft Office, comprises the following guides and online help products:

→ Tip

The guides and tutorials are regularly updated and enhanced. Make sure that you have the latest version by checking the SAP Help Portal and SAP Community Network on a regular basis.

Administrator Guide

The Administrator Guide contains detailed information that a user needs to install, configure and administer Analysis for Microsoft Office. The guide is available on the SAP Help Portal.

User Guide

The User Guide contains the conceptual information, procedures and reference material that a user needs to create and analyze Microsoft Excel workbooks and Microsoft PowerPoint slides with Analysis for Microsoft Office. There are three user guides for Analysis: the Analysis Plug-in User Guide, the BPC Plug-in User Guide and the EPM Add-in User Guide. The guides are available on the SAP Help Portal.

Online Help

The online help contains the same information as the User Guides. It links directly to the documents on the SAP Help Portal.

What's New Guide

The What's New guide for SAP Analysis for Microsoft Office, provides a complete list of the new and modified features for SAP Analysis since the previous release. The guide is available on the SAP Help Portal.

eLearning Tutorials

The tutorials show you how to use SAP Analysis. They give you a quick introduction to different features so that you can learn the basics of working with the Add-In. They also give you a first impression of the look and feel. The tutorials are available in the SAP Community Network at <http://scn.sap.com/docs/DOC-7679?refer=product-help>.

3 What's New in Administration

3.1 Installing Analysis 2.8

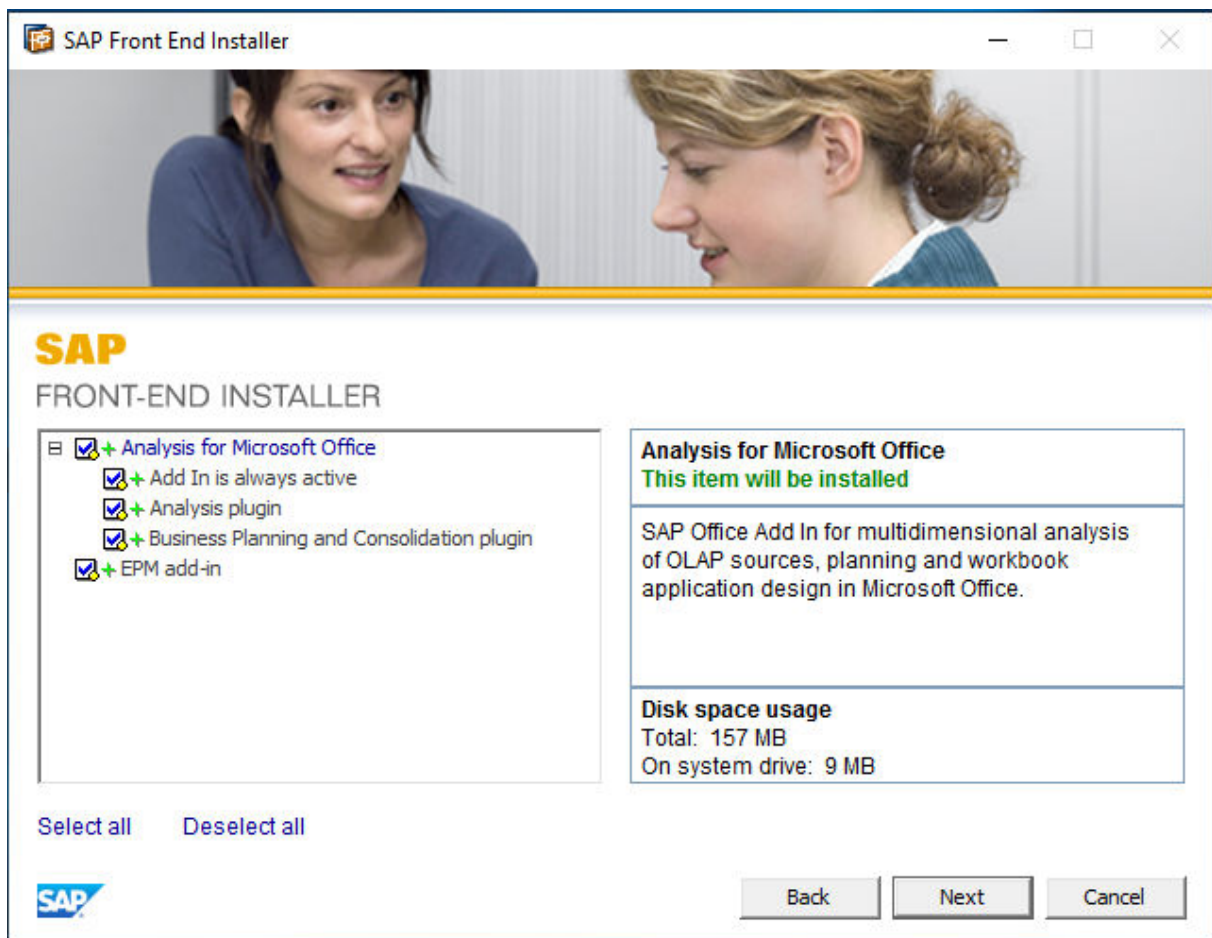
Installation

SAP Analysis for Microsoft Office is now available for Microsoft Office 2010, Microsoft Office 2013, Microsoft Office 2016, Microsoft Office 2019 and Office 365.

It consists of the following installable components:

- Analysis Add-in including the Analysis plug-in and the Business Planning and Consolidation plug-in
- Enterprise Performance Management Add-in (EPM add-in)

In the component list of the *SAP Front End Installer*, you have the following options:



3.2 Connections

Insecure connections

Users get now a warning when they try to connect to an insecure connection. The default behavior is that they can continue with the logon if they want.

As an administrator, you can use the setting `AllowInsecureConnection` to specify if the warning should be displayed but the user can continue (default), if the warning should be displayed and the user can't continue, or if the user is connected without getting a warning

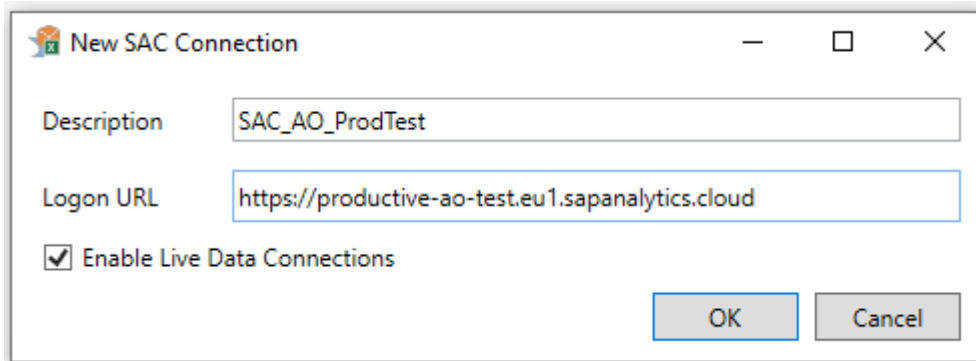
Using SAP Analytics Cloud live data connections

You can now use live data connections with SAP Analytics Cloud.

Live Data connection means that you're directly connected to an SAP BW or SAP HANA system via your SAP Analytics Cloud.

For Analysis 2.8 SP0, using Live Data connections with SAP BW requires the BW release 7.50 SP 16 or a higher version. As of Analysis 2.8 SP2, you can also use earlier BW releases for live data connections.

To use live data connections, select the option *Enable Live Data Connections* in the *New SAC Connection* dialog:



The screenshot shows a dialog box titled "New SAC Connection". It has a title bar with a SAP logo and standard window controls (minimize, maximize, close). The dialog contains three input fields: "Description" with the value "SAC_AO_ProdTest", "Logon URL" with the value "https://productive-ao-test.eu1.sapanalytics.cloud", and a checked checkbox labeled "Enable Live Data Connections". At the bottom right, there are "OK" and "Cancel" buttons.

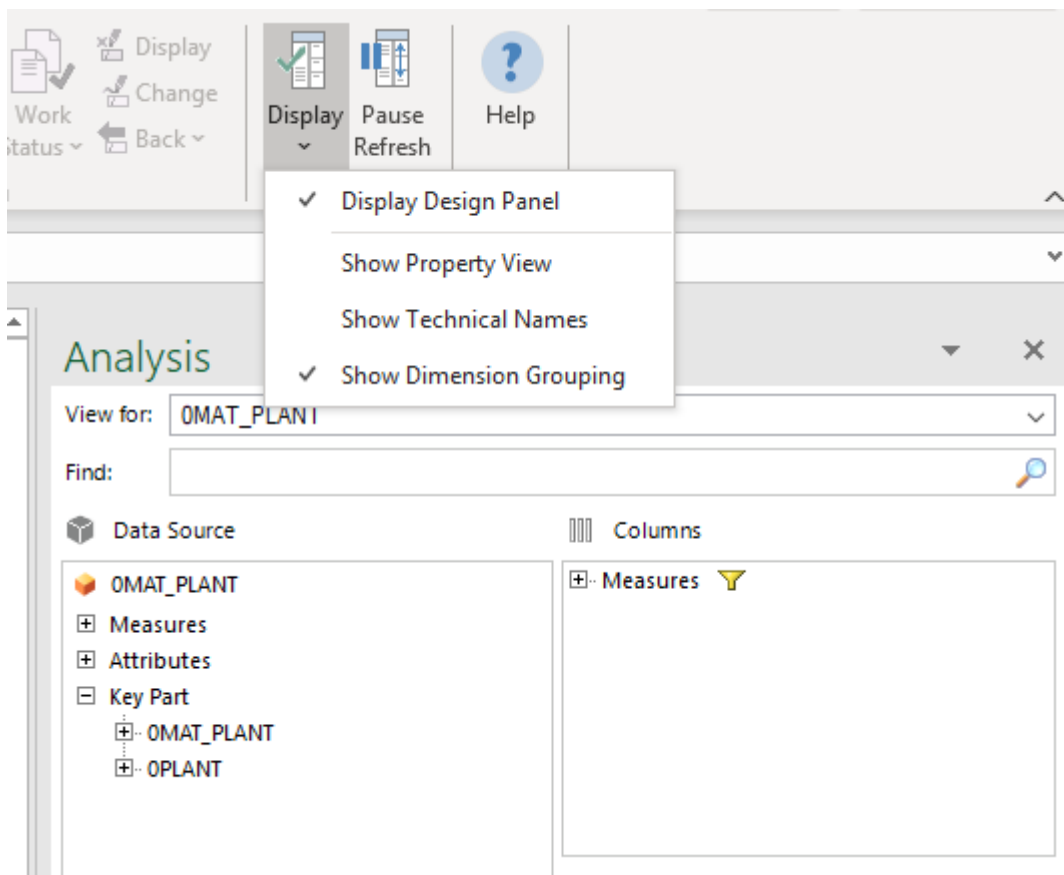
4 What's New in Analysis Plug-in

4.1 Working with the design panel

Displaying grouped dimensions in the design panel

You can now display grouped dimensions on the Analysis tab in the design panel.

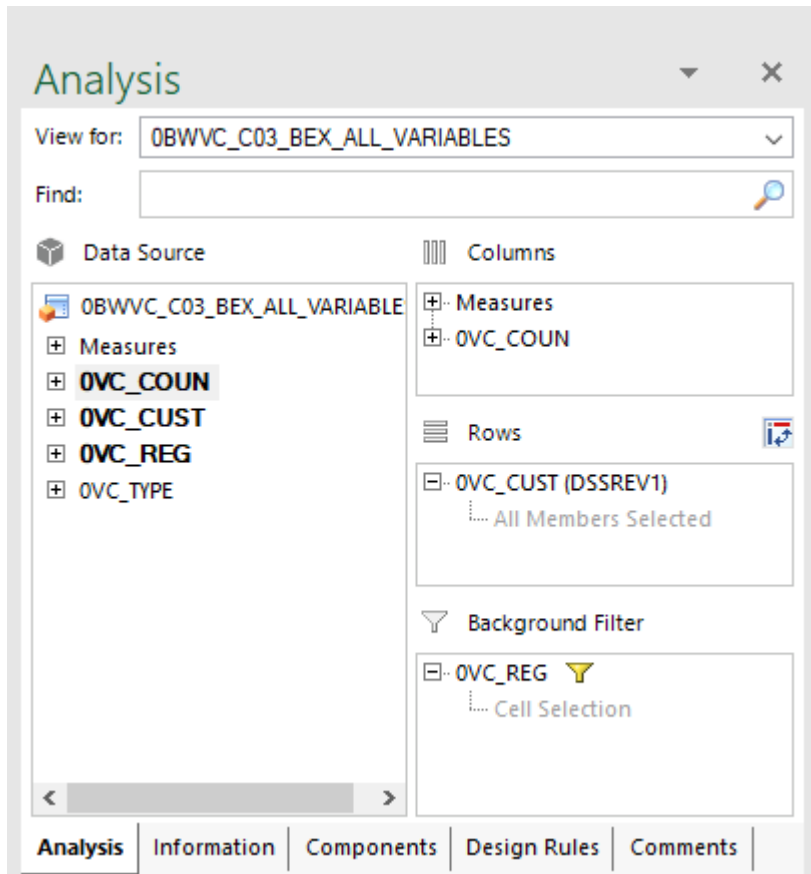
You can group dimensions for data sources in SAP BW and SAP HANA systems. In Analysis, you can decide if the dimensions of a data source are displayed as a flat list or as grouped dimensions. You can change the display by choosing **Display > Show Dimension Grouping** Design Panel group in the ribbon:



Highlighting used dimensions in the design panel

Dimensions used in the analysis are now highlighted in the design panel.

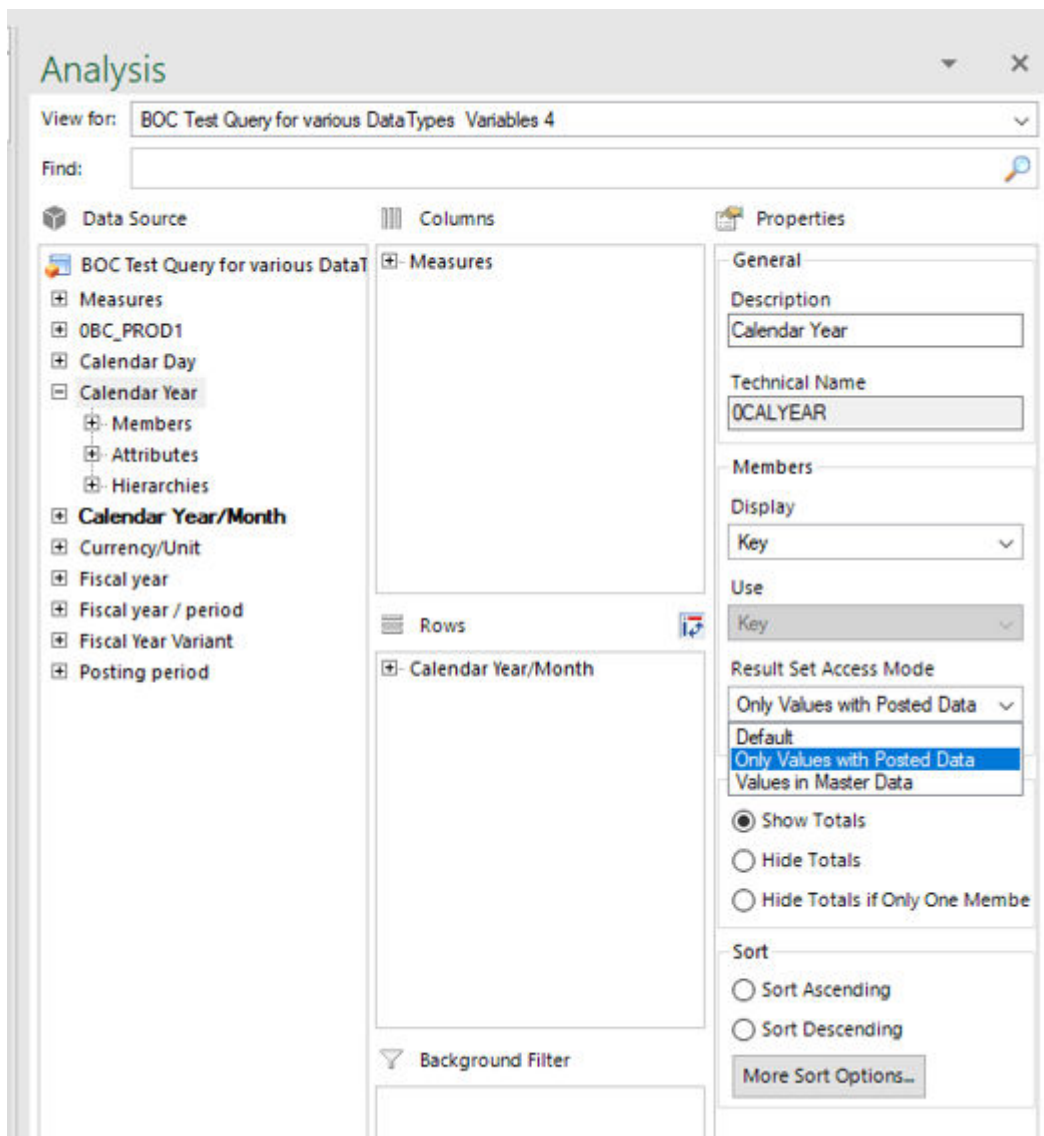
Dimensions that you add to the crosstab by moving them from the data source section to another section in the design panel, are displayed in bold letters in the data source section:



Selecting the Access Mode in the Property View

You can now select an access mode to define the member display in the Property View in the design panel. You can select an access mode for SAP BW and SAP HANA data sources.

The option Result Set Access Mode is only available in the Property View if the setting AllowChangingAccessMode is set to true. You can do this in the Advanced options dialog or the Technical Configuration in the Analysis backstage area.



4.2 Working in formula-optimized mode

You can now use all data sources in a formula-optimized mode in Analysis. The data sources can be located in SAP BW, SAP HANA or SAP Analytics Cloud.

The data sources must have at least one key figure structure. They can contain restrictions, restricted key figures, calculated key figures and hierarchies.

4.3 Prompting

Using variants

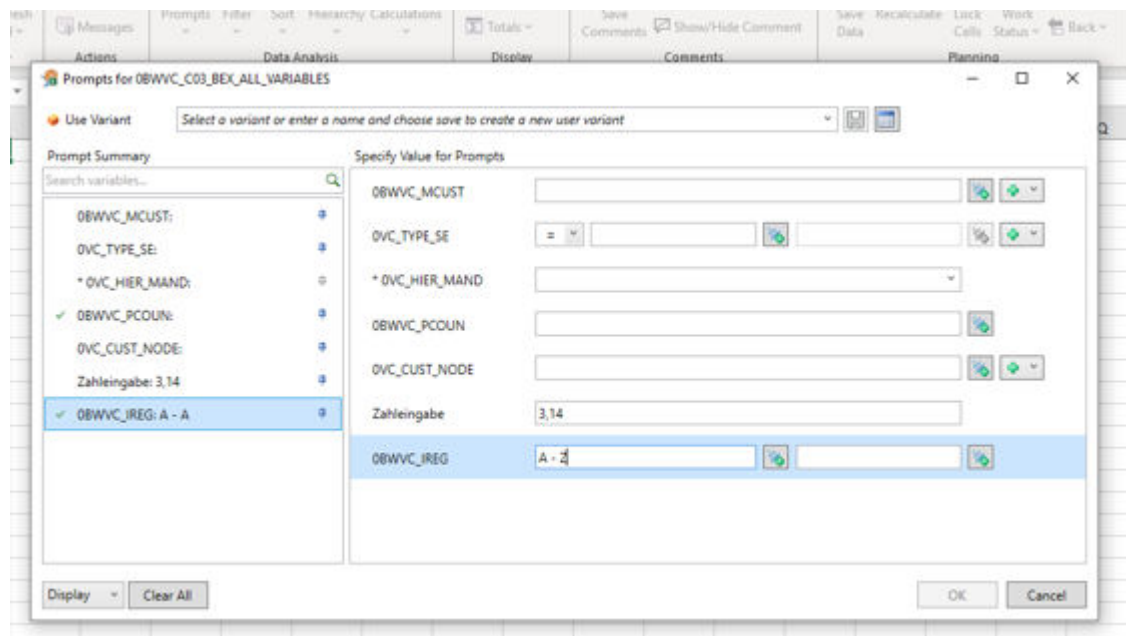
The variants are now listed in alphabetical order in the Prompts dialog.

Also new is the following behavior: After selecting a variant from the list, the first prompt in the *Prompts Summary* area is selected and the corresponding entry in the *Specify Value for Prompts* area.

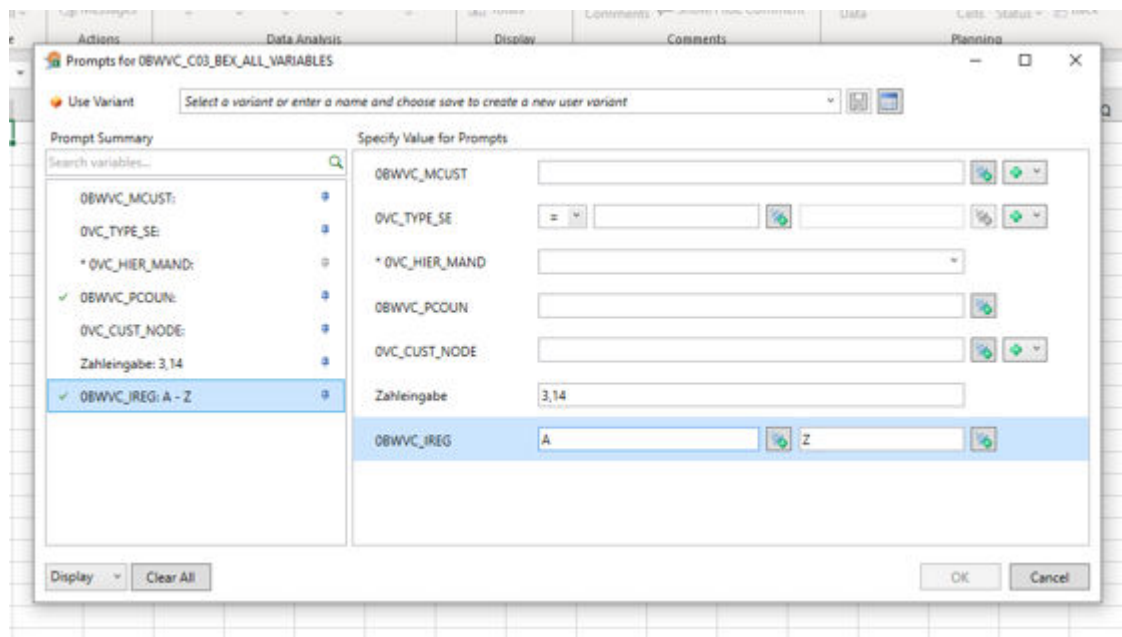
Entering value ranges for variables

You can now enter the start and end member for value ranges manually in one field. The values need to be separated with space-minus-space (-). When applying the values, Analysis moves the end member automatically to the second field. You can apply the values with selecting the tab key or selecting another field in the dialog.

Entering the intervall A - Z:



After applying the interval:



Using SAP HANA data sources with hierarchies

When using SAP HANA data sources, the cached hierarchy level information is now cleared when you switch to a different hierarchy.

In previous Analysis versions, the behavior is different. Here is an example: A user initially runs a report for Hierarchy A (6 hierarchy levels), then changes the prompt and runs it for Hierarchy B (10 hierarchy levels). The capability to expand the hierarchy remains based on the Hierarchy A levels (6), not the Hierarchy B levels (10). The behavior is that the user can only expand Hierarchy B for 6 levels in this scenario.

As the cached hierarchy level information is now cleared when switching to a different hierarchy, the user can now expand Hierarchy B for 10 levels in this example.

Clear all defined values

If you need to define new prompt values for a data source, you can now select *Clear All* in the *Prompts* dialog to remove the defined values for all prompts and define new values.

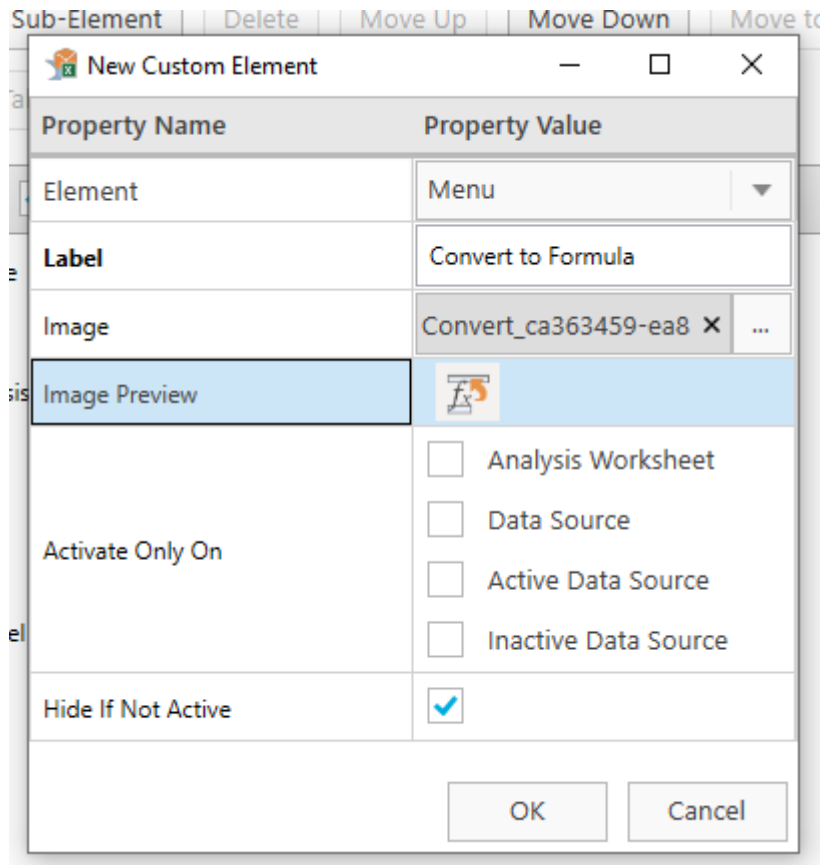
4.4 Customizing the user interface

Images in profiles are now stored within the profile xml.

In former releases, the profile XML stored references (file paths) to images that are to be displayed on UI elements. This required to distribute the profile xml and the images.

With the new version, image data is stored in the profile xml. Existing profiles with referenced images can still be used in Analysis.

You can add a label for the Image. After uploading the image, a preview is shown in the field Image Preview:

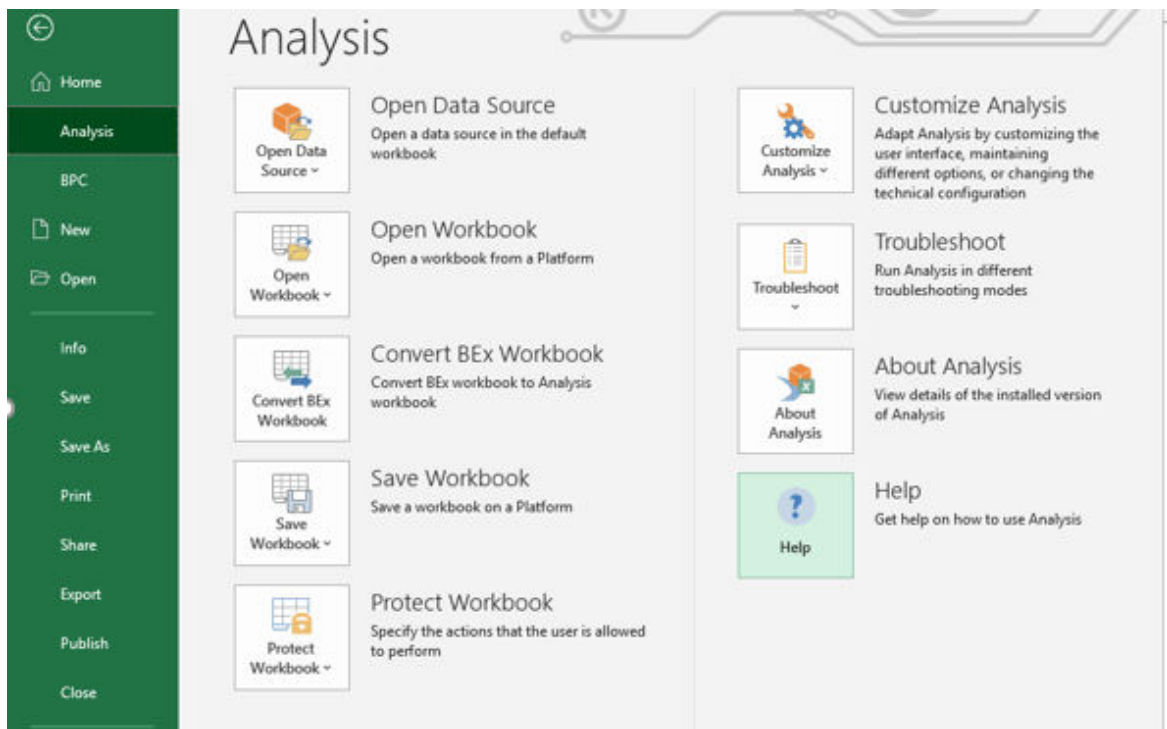


4.5 Online Help

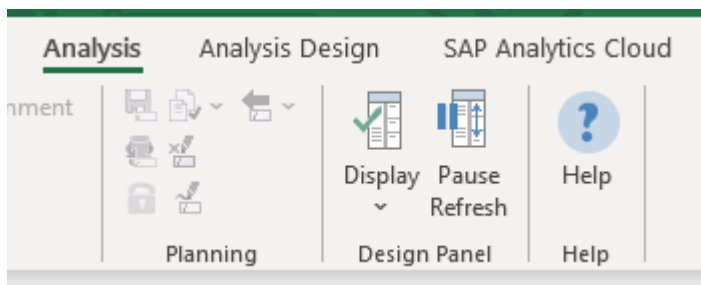
The online help in Analysis is now directly linked to the SAP Help Portal.

You have the following options:

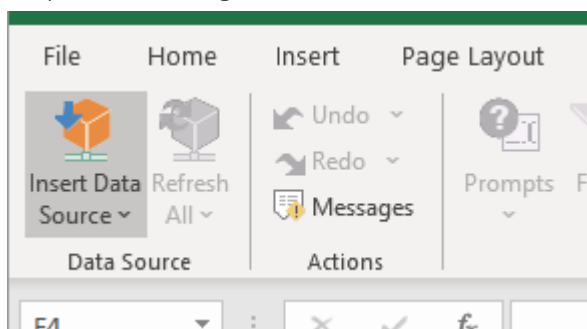
- You can select [Help](#) in the Analysis backstage menu to access the SAP Analysis for Microsoft Office product page on the SAP Help Portal:



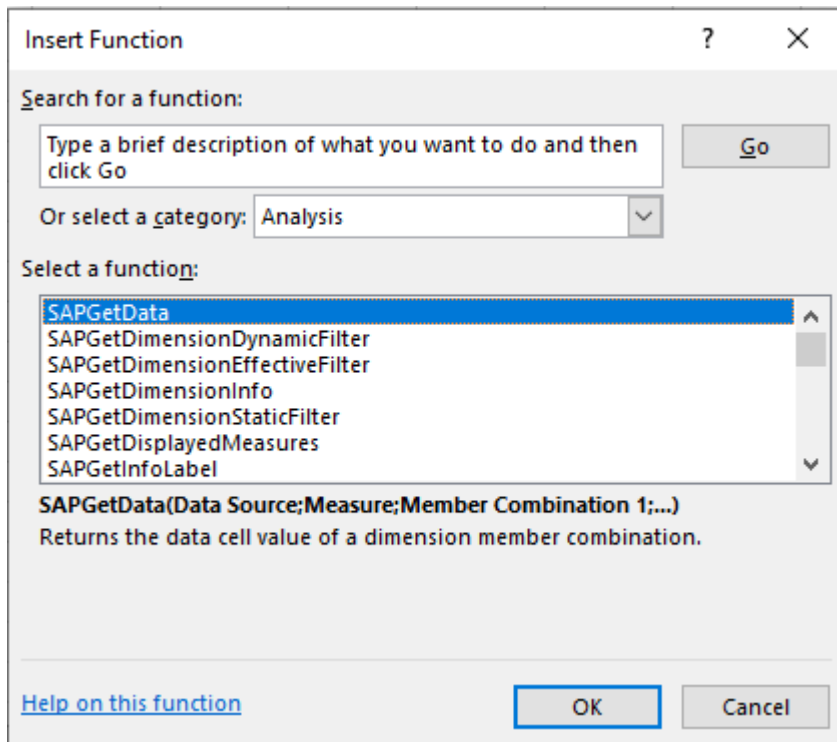
- You can jump to the corresponding chapters in the user guide using the [Help](#) buttons on the [Analysis](#) and [Analysis Design](#) ribbon tabs:



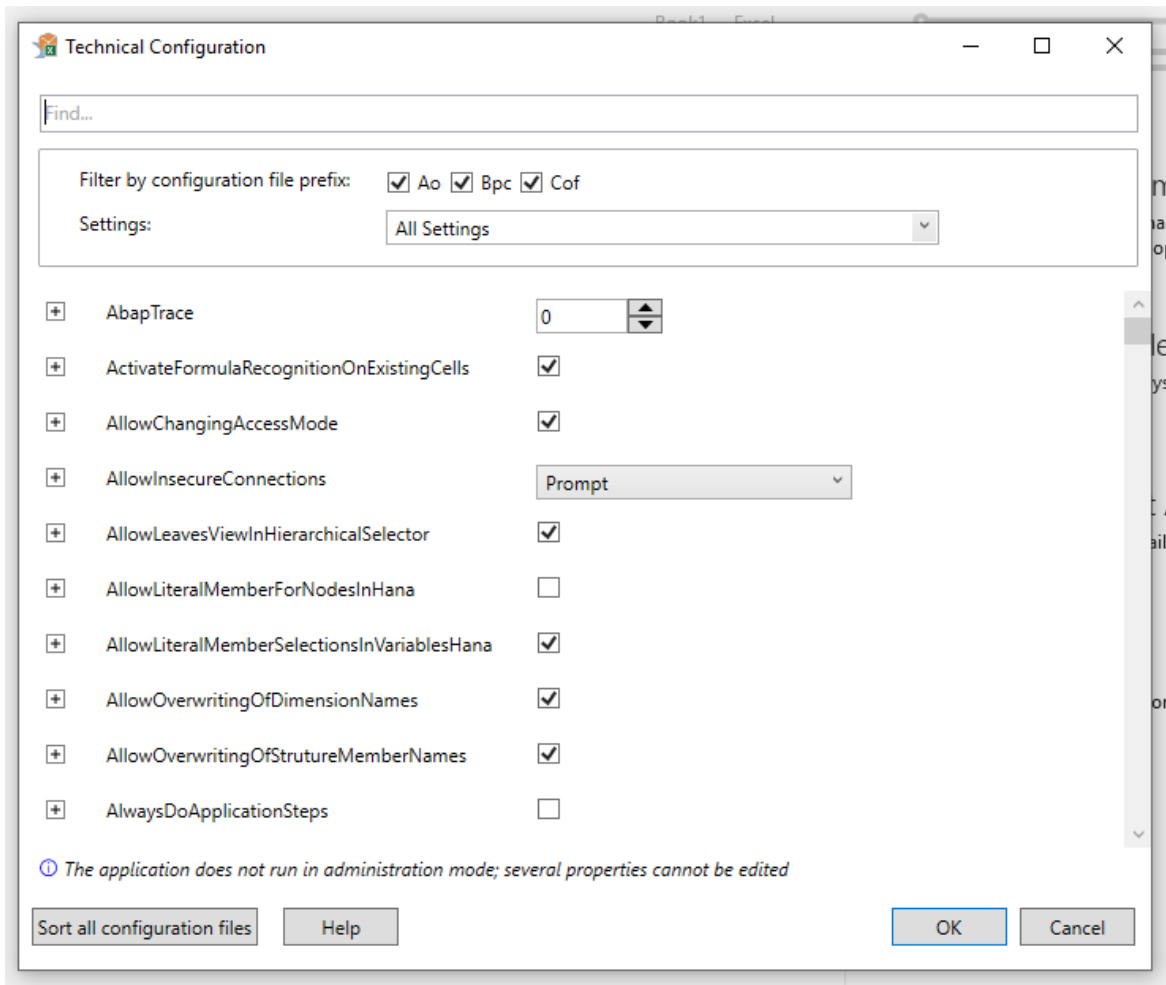
- You can set the cursor on a ribbon button or a design panel tab and press [F1](#) to jump to the corresponding chapter in the user guide:



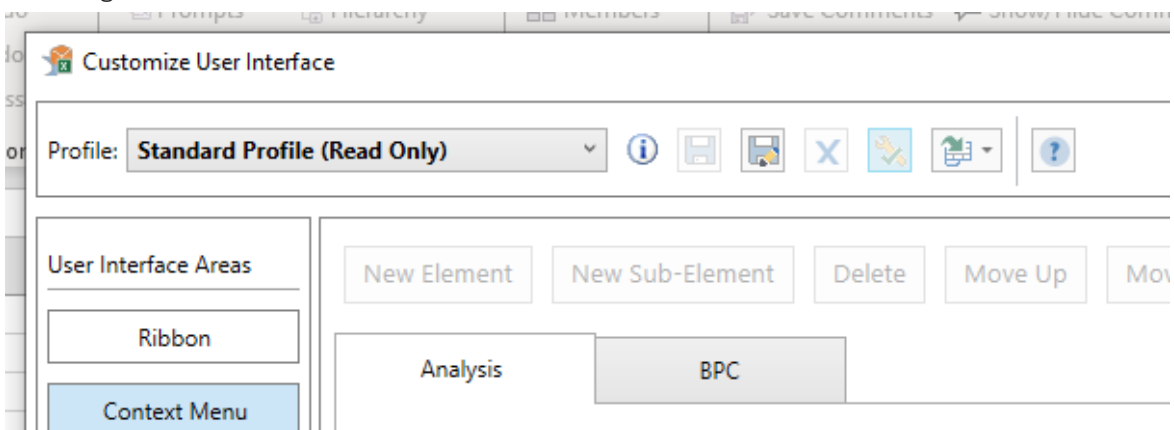
- You can select [Help on this function](#) in the [Insert Function](#) dialog to jump to the corresponding topic in the user guide:



- You can select *Help* in the *Technical Configuration* dialog to jump to the settings documentation in the user guide:



- You can select  in the *Customize User Interface* dialog to open the corresponding documentation in the user guide:



5 What's New in Analysis 2.8 SP1

The following features are new in 2.8 SP1.

For corrections and updates released with 2.8 SP1, please see SAP Note [2679485](#).

Using SAP Analytics Cloud live data connections

Analysis now supports the following live data connections, objects and connection types:

- SAP HANA to access SAP HANA views (Type: Direct Connection)
- SAP BW to access SAP BW objects (Type: Direct Connection)
- SAP BW/4HANA to access SAP BW/4HANA objects (Type: Direct Connection)
- SAP BPC to access SAP BPC objects (Type: Direct Connection)
- SAP S/4HANA to access SAP S/4HANA ABAP CDS views (Type: Direct Connection)

For more information on the required system versions, please see the SAP Analytics Cloud help for System Requirements and Prerequisites at [Data Connectivity - Live](#).

Displaying grouped dimensions in the design panel

You can now use drag&drop for hierarchies on the Analysis tab if the dimensions are displayed as grouped dimensions.

Technical Configuration

There are two new settings:

- `PlanningFunctionUploadFolder`
You can use this setting to define a default folder to select a file when executing planning objects.
- `UseLegacyModeForFormulaContext`
You can use this setting to specify the mode for creating formulas with Table Design.

Working with formulas

The Analysis Help includes examples for formulas. These examples use a semicolon as list separator. If you use these examples in your Analysis installation, they'll only work properly if you use the same default list separator on your machine.

The help now contains information how you can check which default list separator you use.

6 What's New in Analysis 2.8 SP2

The following features are new in 2.8 SP2.

For corrections and updates released with 2.8 SP2, please see SAP Note [2679436](#) and SAP Note [2919308](#) (for 2.8 SP2 patch 1).

Commenting data cells

Analysis now uses its own buttons and texts for adding comments to a data cell.

To create a new or edit an existing comment, select the cell and choose *Create/Edit Comment* in the ribbon.

Also, in the context menu, you find now the corresponding options for comments, for example, *Delete Comment*.

In former versions, Analysis reused the texts of Microsoft Excel for comments. As Microsoft Excel renamed the Comments to Notes, the wording for comments was inconsistent in the ribbon and the context menu. With this update, the term Comment is now used consistently for comments in Analysis.

7 What's New in Analysis 2.8 SP3

The following features are new in 2.8 SP3.

For corrections and updates released with 2.8 SP3, please see SAP Note [2917177](#) and SAP Note [2948273](#) (for 2.8 SP3 patch 1).

Using BI platform 4.3

Please note that using the BI platform 4.3 with Analysis will be enabled later this year.

Launching Analysis from the web

You can now define launching files to start Analysis with an established connection or open a workbook saved on a platform, for example. To publish a launching file, you can directly share it with other users or make it public via a link on a web page.

Analysis offers the XML schema that helps you to create your own launching file. The XML schema is delivered as .xsd file (XSD = XML Schema Definition). The Analysis launching file that you create is an XML with extension .sapaox, which adheres to the format specified by the Analysis launcher XML schema.

The following scenarios are supported by the Analysis launcher XML schema:

Scenario	Platform/Backend
Start Analysis with an established connection	<ul style="list-style-type: none">• SAP BI platform• SAP BW• SAP HANA• SAP Analytics Cloud
Start Analysis with an established connection and an open data source	<ul style="list-style-type: none">• SAP BW• SAP HANA• SAP Analytics Cloud
Open a workbook saved on a platform	<ul style="list-style-type: none">• SAP BI platform• SAP NetWeaver
Open a data source from a platform	<ul style="list-style-type: none">• SAP BI platform
Get connection information from a platform	<ul style="list-style-type: none">• SAP BI platform• SAP Analytics Cloud (live connections)

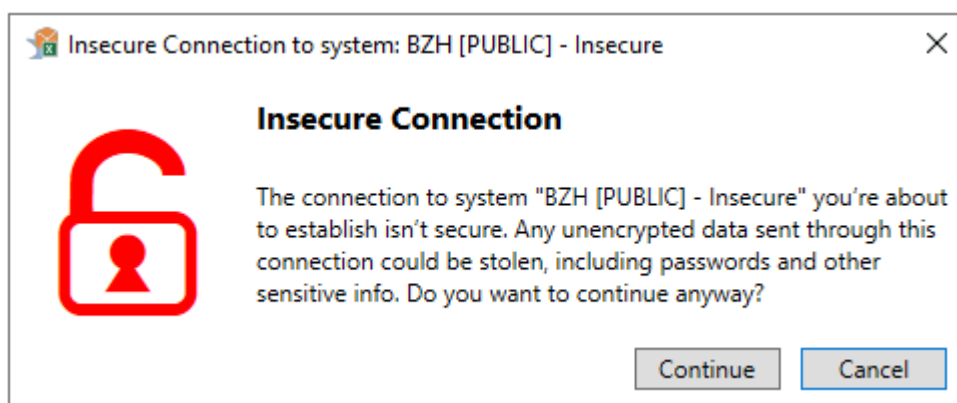
Scenario	Platform/Backend
Open a data source with the connection information (BIP) or Live Data Connection information (SAC) from a platform	<ul style="list-style-type: none"> • SAP BI platform • SAP Analytics Cloud (live connections)

Handling insecure connections

Analysis now checks the security of a connection to a backend system when you start to establish the connection.

An insecure connection could be a connection to a BW system without SNC (Secure Network Communication) or below SNC quality 3 or a connection without HTTPS to a BI platform, SAP HANA or SAP Analytics Cloud.

When you're trying to establish an insecure connection, Analysis shows a warning:



As an administrator, you can use the setting `AllowInsecureConnections` to define the options users should have when trying to establish an insecure connection.

If Analysis can't establish a secure connection (SNC) to a selected BW system, another dialog can be displayed where you can choose one of the following options:

- Try again with SNC to establish a secure connection
- Try without SNC to establish an insecure connection
- Cancel without establishing a connection

With the setting `EnableWarningForFailedSnc`, you can specify whether the dialog that a secure connection couldn't be established should be displayed.

Using SAP Analytics Cloud connections

The URL of your SAP Analytics Cloud tenant now needs to start with `https://`.

Technical Configuration

The setting `IncludeInstancesInInfoObjectSearchResult` is new.

When you search for a workbook stored on the BI platform in Analysis (in the Excel Backstage -> Analysis -> Open Workbook -> Open Workbook from the SAP BusinessObjects BI Platform), the search results might include more than one instance of the same workbook. But the additional instances might have different file sizes.

However, when you search for the same workbook in the Central Management Console (CMC) in the BI platform, only the original workbook is included in the search results.

You can use the new setting to specify whether the additional instances should be part of the search result for workbooks on the BI platform in Analysis.

8 What's New in Analysis 2.8 SP4

The following features are new in 2.8 SP4.

For corrections and updates released with 2.8 SP4, please see SAP Note [2924387](#) and SAP Note [2959437](#) (for 2.8 SP4 patch 1).

Using the BI platform

You can now use the BI platform 4.3 as a platform and for scheduling workbooks.

Creating and managing BW system connections in the BI platform

You create connections to BW systems in the module *OLAP Connections* in the BI platform. In this module, you can't maintain Secure Network Communication (SNC) information. But you can now reuse the SNC information from SAPUIandscape for your connection on the BI platform if the same system is maintained in the OLAP connection on the BI platform and in the SAPUIandscape.

To enable the reuse, the new setting `UseLocalSncInfoForRemoteConnections` must be set to true. This is the default value for this setting.

Saving query views

You can now save query views to roles. Therefore, the Save Query View dialog has the new tab *Role*. The roles are created in the BW system.

Documentation Update

The chapter *To filter out members directly on the crosstab* was updated. Please note that you can filter out members directly only for dimensions without hierarchies.

9 What's New in Analysis 2.8 SP5

The following features are new in 2.8 SP5.

For corrections and updates released with 2.8 SP5, please see SAP Note [2924400](#) .

Filtering Members

To select and deselect members in the filter dialog, you can now click the checkbox or the text next to the checkbox in the members list.

To filter out members directly on the crosstab

You can now filter out directly members for dimensions without hierarchies and for flat and hierarchical structures.

Analysis Settings

The setting `TraceLogLevel` is new. You can use it to define the amount of log and trace information that should be stored in the `log.config` file.

10 What's New in Analysis 2.8 SP6

The following features are new in 2.8 SP6.

For corrections and updates released with 2.8 SP6, please see SAP Note [2927196](#).

Analysis Settings

The setting `RouterStringCopyOption` is new. You can use it to specify whether Analysis should copy SAP router strings from the SAP GUI landscape's respective system entries.

11 What's New in Analysis 2.8 SP7

The following features are new in 2.8 SP7.

For corrections and updates released with 2.8 SP7, please see SAP Note [2993485](#).

Specify a logon language for SAP Analytics Cloud Live Data connections

If you enable the Analysis advanced option *Allow Client and Language Selection for SSO Logon*, you can now select a language when logging on to an SAP Analytics Cloud Live Data connection. This selection overwrites the language configurations specified in SAP Analytics Cloud.

Help Update: Working in formula-optimized mode

The help for Working in formula-optimized mode was enhanced. You can now find more information about the use cases and the syntax for the SAPGetData formula.

Help Update: Analysis Settings

The following settings are now documented:

- AlwaysCallSheetIdUsingXlIntl
- AppBuilderWindowHeight
- AppBuilderWindowWidth
- ChangeNumberFormatToTextForFilterComponent
- EnableAdvancedFormulaReferences
- EnableIncludesInSapUiLandscapeXml
- EnableNodeTextClickInFilterDialog
- ForceFullyCompoundedKeys
- ForceHttpsScheme
- GatewayServiceNo
- HierarchyLevelHideAutoOffset
- InsertCopiedProfilingResultsToNewSheet
- MatchDimensionsByText
- NwbcTicketIssuerPath
- ReadOnlyBoeSystemsList
- ReassignPFLinkFilterOnInitialRefresh

- RememberSearchObjectType
- ReResolveDependentHierarchyNodeVariables
- SapWebGuiPath
- SearchObjectTypeBw
- SearchObjectTypeHana
- SidePanelWidth
- TextKeyDisplayForPrompts
- TimerDialogDisplayTime
- TimerSetPlanQueriesToDisplayMode
- UseOlapHanaCubeAsHanaInstance
- UseSacLiveHostnameInBwConnection

12 What's New in Analysis 2.8 SP8

The following features are new in 2.8 SP8.

For corrections and updates released with 2.8 SP8, please see SAP Note [2993475](#).

SAP Analytics Cloud Live Data connections

When you choose *Insert Data Source* in the ribbon, the recently used SAP Analytics Cloud Live Data connections are now listed for quick selection.

SAP Analytics Cloud models

Analysis does currently not support the new model type *Model with Measures*. Therefore, these models are not shown in the *Select Data Source* dialog.

Analysis Settings

The setting `DisableBWDirectSearch` is new. You can use it to specify whether the direct search or the classic search should be used for searching data sources in BW systems.

13 What's New in Analysis 2.8 SP9

The following features are new in 2.8 SP9.

For corrections and updates released with 2.8 SP9, please see SAP Note [2993498](#).

New version of SAP Analysis for Microsoft Office, edition for SAP Analytics Cloud

Analysis, edition for SAP Analytics Cloud, does now allow you to store and use workbooks on the BI platform and BW repositories.

You can use the new edition for SAP Analytics Cloud like the Analysis full version: connecting directly to BW (or BI platform) without using the live connections defined in SAP Analytics Cloud. This function provides the full integration with your existing repositories or the basis for building your new repository if you are not using Analysis yet. You can also open and analyze workbooks created with the Analysis full version.

As a SAP Analytics Cloud subscription is required for this edition, a connection to one SAP Analytics Cloud tenant must still be configured. However, this connection is only used to verify the subscription, and you can configure it to save the connection so that the check is done without any user interaction.

There are two new settings related to the edition for SAP Analytics Cloud:

- `AutoConnectToLastSelectedSacSystem`
You can use this setting to automatically connect to a defined SAP Analytics Cloud tenant without getting a log-on dialog again.
- `LastSelectedSacSystem`
Analysis uses this setting to remember the last connection you used for the next session. This connection is then preselected when you use Analysis the next time.

For more information about this new Analysis version, please see the SAP Help Portal at [SAP Analysis for Microsoft Office, edition for SAP Analytics Cloud](#)

Working with SAP Analytics Cloud models

When filtering dimensions with hierarchies applied, you can now use the search field in the filter dialog to search for members.

14 What's New in Analysis 2.8 SP10

There are no new features in 2.8 SP10.

For corrections and updates released with 2.8 SP10, please see SAP Note [3051755](#).

15 What's New in Analysis 2.8 SP11

The following features are new in 2.8 SP11.

For corrections and updates released with 2.8 SP11, please see SAP Note [3051741](#).

System Requirements

The Microsoft .NET Framework version 4.7.2 is now a prerequisite for using Analysis.

Handling Insecure Connections

Before establishing a new connection, Analysis evaluates the status of the connection. The check now also detects not reachable or undefined connections. Connections could be not reachable because of timeout exceptions, proxy issues, or the 404 http status code. And undefined connections are unauthorized or have other exceptions.

The setting `AllowInsecureConnections` was enhanced. It now has the additional parameter values `NoInsecure` and `PromptInsecure`.

For getting an overview of making secure connections between Analysis and its targets, you can also see the new SAP Knowledge Base Article [Analysis for Office Secure Connections](#).

Table Design

There are four new SAP Knowledge Base Articles for working with Table Design. You can access them from the respective chapter in the user guide or this What's New document:

- [Table Design formulas returning NA, #VALUE! or #NAME?](#)
- [Performance issues with Table Design formulas in Analysis](#)
- [Using Fill Handle for Table Design formulas in Analysis](#)
- [Analysis for Office Table Design does not save entered text as Design Rule](#)

Analysis Settings

The setting `PreferDirectAssertionTickets` is new. You can use it to define how a new re-entrance ticket is received.



Please note that the setting was available as a private setting with SP5 and is public now.

Important Disclaimers and Legal Information

Hyperlinks

Some links are classified by an icon and/or a mouseover text. These links provide additional information.

About the icons:

- Links with the icon : You are entering a Web site that is not hosted by SAP. By using such links, you agree (unless expressly stated otherwise in your agreements with SAP) to this:
 - The content of the linked-to site is not SAP documentation. You may not infer any product claims against SAP based on this information.
 - SAP does not agree or disagree with the content on the linked-to site, nor does SAP warrant the availability and correctness. SAP shall not be liable for any damages caused by the use of such content unless damages have been caused by SAP's gross negligence or willful misconduct.
- Links with the icon : You are leaving the documentation for that particular SAP product or service and are entering a SAP-hosted Web site. By using such links, you agree that (unless expressly stated otherwise in your agreements with SAP) you may not infer any product claims against SAP based on this information.

Videos Hosted on External Platforms

Some videos may point to third-party video hosting platforms. SAP cannot guarantee the future availability of videos stored on these platforms. Furthermore, any advertisements or other content hosted on these platforms (for example, suggested videos or by navigating to other videos hosted on the same site), are not within the control or responsibility of SAP.

Beta and Other Experimental Features

Experimental features are not part of the officially delivered scope that SAP guarantees for future releases. This means that experimental features may be changed by SAP at any time for any reason without notice. Experimental features are not for productive use. You may not demonstrate, test, examine, evaluate or otherwise use the experimental features in a live operating environment or with data that has not been sufficiently backed up.

The purpose of experimental features is to get feedback early on, allowing customers and partners to influence the future product accordingly. By providing your feedback (e.g. in the SAP Community), you accept that intellectual property rights of the contributions or derivative works shall remain the exclusive property of SAP.

Example Code

Any software coding and/or code snippets are examples. They are not for productive use. The example code is only intended to better explain and visualize the syntax and phrasing rules. SAP does not warrant the correctness and completeness of the example code. SAP shall not be liable for errors or damages caused by the use of example code unless damages have been caused by SAP's gross negligence or willful misconduct.

Bias-Free Language

SAP supports a culture of diversity and inclusion. Whenever possible, we use unbiased language in our documentation to refer to people of all cultures, ethnicities, genders, and abilities.

© 2021 SAP SE or an SAP affiliate company. All rights reserved.

No part of this publication may be reproduced or transmitted in any form or for any purpose without the express permission of SAP SE or an SAP affiliate company. The information contained herein may be changed without prior notice.

Some software products marketed by SAP SE and its distributors contain proprietary software components of other software vendors. National product specifications may vary.

These materials are provided by SAP SE or an SAP affiliate company for informational purposes only, without representation or warranty of any kind, and SAP or its affiliated companies shall not be liable for errors or omissions with respect to the materials. The only warranties for SAP or SAP affiliate company products and services are those that are set forth in the express warranty statements accompanying such products and services, if any. Nothing herein should be construed as constituting an additional warranty.

SAP and other SAP products and services mentioned herein as well as their respective logos are trademarks or registered trademarks of SAP SE (or an SAP affiliate company) in Germany and other countries. All other product and service names mentioned are the trademarks of their respective companies.

Please see <https://www.sap.com/about/legal/trademark.html> for additional trademark information and notices.