

Penpower Jr. User Manual

Version: V7.1

Edition: Second edition released November, 2007

Penpower Technology Ltd.,

Software User License Agreement

You are licensed to legally use this software program (“the Software”) by Penpower Technology Ltd (“Penpower”) under this license agreement (“The Agreement”). If you do not agree with any of the provisions in this Agreement, please do not install, copy or use the Software. By using the Software, you are deemed to fully understand and accept the provisions of this Agreement.

1. Intellectual Property

All intellectual property rights in the Software, together with all information and documents included in the packaging for the Software (including but not limited to copyrights), are property of Penpower, and are protected by relevant laws and regulations.

2. License to Use

You are authorized to use the Software on one (1) single computer only. You may not use the Software on any other machines other than the said single computer.

3. Authority to Copy

The Software and all documents included with the Software, and copyright thereof, are property of Penpower. You are licensed to make one (1) copy of the Software for your personal backup purposes. All other acts of copying are strictly prohibited.

You may not sell, lease, disassemble, reverse engineer, copy, translate, adapt or derive the Software, or obtain the source code of the Software by any other means. You may not use the Software for any purposes other than those permitted under this Agreement.

4. Business Users

If you need to install or use the Software on more than one (1) computer, please contact Penpower or our local distributor to purchase a license for the additional use.

5. Liability

You agree to indemnify Penpower against all losses, costs, debts, settlement payments or other expenses (including but not limited to attorneys fees) arising from your breach of this Agreement, and you agree to compensate Penpower for all of the abovementioned damages.

6. No Warranty

Effectiveness of a packaged software in handling information is closely related to its software and hardware environment. The Software is published following careful development and product testing by Penpower, but Penpower is not able to conduct tests based on all possible combinations of software and hardware environment. Therefore, Penpower is unable to promise nor warrant that there will be absolutely no risk of loss or damage of information, or any other kind of loss, during installation and/or execution of the Software. You must be fully aware of your risks in using the Software.

Penpower will provide you with the Software and support services in respect of the Software to the maximum extent permitted by law. However, Penpower does not warrant that the Software and information included in the package of the Software contain no defects or errors. Penpower is not liable for any indirect, special or incidental loss arising from the Software, including but not limited to loss of profits, damage to business reputation, cessation of work, hardware malfunction or damage, or any other commercial damage or loss arising from commercial use of the Software.

7. Limitation of Liability and Damages

The maximum amount of compensation payable by Penpower, in respect of any damage incurred by you for any reason under this Agreement, is limited to the amount you have already paid to Penpower in respect of the Software.

Under no circumstances will Penpower be held liable for the possibility of loss, notwithstanding Penpower may be aware of the possibility of such loss.

8. Prohibition Against Sublicense

You are prohibited to assign the license in respect of the Software granted to you under this Agreement, or to grant a sublicense to another person.

9. Jurisdiction

With regards to any disputes arising from this Agreement, Penpower and you agree that the court having jurisdiction over the business location of Penpower will be the court in the first instance.

10. Miscellaneous

In the event that any provision of this Agreement is found to be invalid at law, such invalidity will not affect the validity of any other provisions, or the legal enforceability of such other provisions.

In the event that the Software cannot be executed under conditions of normal use, due to any damage to the original disk/s, Penpower will replace the disk/s free of charge.

Contents

Chapter 1 Introduction.....	1-1
Chapter 2 Installation.....	2-1
2.1 System Requirement.....	2-1
2.2 Handwriting Software Installation.....	2-1
2.3 USB Human Interface Device Installation.....	2-6
Chapter 3 Hardware Operation.....	3-1
3.1 Calibration.....	3-1
3.2 Touch Pad Operation.....	3-2
Chapter 4 New Handwriting/Mouse Mode.....	4-1
4.1 Run Penpower Jr. Handwriting System.....	4-1
4.2 Switching Modes.....	4-2
4.3 New Handwriting/Mouse Mode.....	4-3
4.3.1 Handwriting Mode Taskbar.....	4-3
4.3.2 Full Screen Handwriting Mode.....	4-4
4.3.3 How to Write.....	4-5
4.3.4 How to quickly fix errors, enter phrases and symbols.....	4-6
4.4 Balloon UI.....	4-7
4.5 Result Correction.....	4-8
4.5.1 By Artificial Intelligence.....	4-8
4.5.2 By related word.....	4-10
4.5.3 Merge.....	4-11
4.5.4 Split.....	4-12
4.5.5 Phrase Correction	4-13
4.6 Homophone.....	4-14
4.7 Related Phrase.....	4-15
4.7.1 Input words by Related Phrase.....	4-15
4.7.2 Update Phrase Database.....	4-16

4.8 Learning String.....	4-18
4.9 Gesture.....	4-20
4.10 Mix Traditional and Simplified Writing.....	4-20
4.11 Switch Version.....	4-21
4.12 Setting.....	4-22
4.12.1 Recognition Setting.....	4-21
4.12.2 General Setting.....	4-24
4.12.3 Writing Setting.....	4-25
4.13 Signature.....	4-26
4.14 On-Line Translator.....	4-28
4.15 Using Penpower Jr. in MSN Messenger.....	4-30

Chapter 5 Traditional Mode.....5-1

5.1 Run Penpower Jr. Handwriting System.....	5-1
5.2 Writing Mode.....	5-1
5.3 Full Screen Handwriting.....	5-2
5.3.1 Balloon UI.....	5-2
5.4 Writing-Pad.....	5-3
5.4.1 Write Input Tool.....	5-3
5.4.2 Phonetic Input Tool.....	5-4
5.4.3 Keyboard Input Tool.....	5-4
5.4.4 Dictionary Input Tool.....	5-5
5.4.5 Symbol Input Tool.....	5-5
5.5 Phrase.....	5-6
5.5.1 Use Phrase to input words.....	5-6
5.5.2 Update Phrase Database.....	5-7
5.6 Other Functions.....	5-8

Chapter 6 Assistant Tools.....6-1

6.1 Penpower VoiceReader.....	6-2
6.1.1 Use Penpower VoiceReader.....	6-2

6.1.2 Reading Setting.....	6-3
6.2 Penpower Translator.....	6-4
6.2.1 English Words.....	6-4
6.2.2 Chinese Characters.....	6-5
6.2.3 English Article Translator.....	6-6
6.2.4 Chinese Article Translator.....	6-6
6.3 Penpower E-mail Touchpad.....	6-9
6.3.1 Setting.....	6-9
6.3.2 Accounts Management.....	6-10
6.3.3 Email Address filter.....	6-10
6.3.4 Connection.....	6-11
6.3.5 Check email manually.....	6-11
6.3.6 Device Test.....	6-11
Chapter 7 Fast User Switching.....	7-1
Appendix FAQ.....	Q-1

Chapter 1 Product Overview

Penpower Junior is available in five models: Penpower Jr. Crystal Touch, Penpower Jr. Silver/Steel, Penpower Jr. Diamond, Penpower Jr. miniCard and Carefree Pen. You may choose the model most appropriate to your personal requirements.

1.1 Penpower Junior Series Overview

1.1.1 Penpower Jr. Crystal Touch

Equipped with a message alert function it flashes and plays music to notify the user that there is an incoming message. The cute design makes it suitable for young MSN users.

Active Pad Area: 2x1.5"

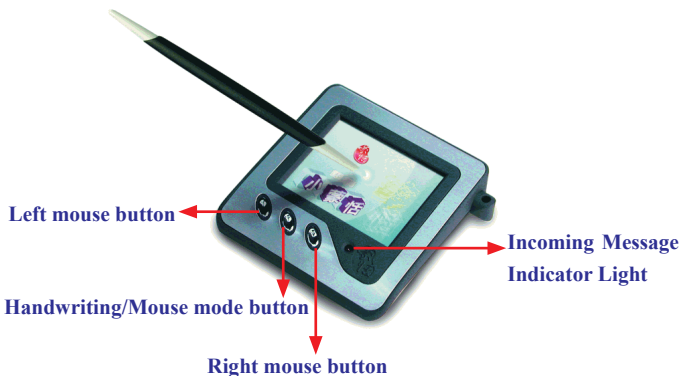




1.1.2 Penpower Junior Silver/Steel

This innovative touch pad is not only light and compact but also combines a metallic pad with the texture of leather. Supports incoming message alerts so when an e-mail is received it flashes.

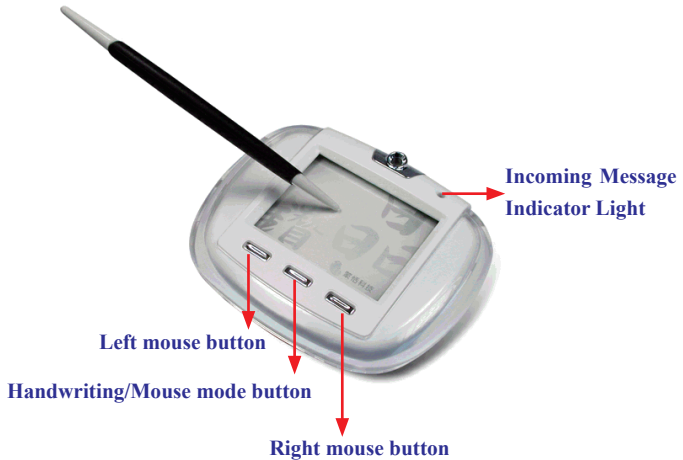
Active Pad Area: 2x1.5"



1.1.3 Penpower Junior Diamond

The eye-catching appearance makes this the new choice for the young and trendy. Available in diamond white and diamond black. Supports incoming message alerts so when an e-mail is received it plays music and flashes.

Active Pad Area: 2x1.5"

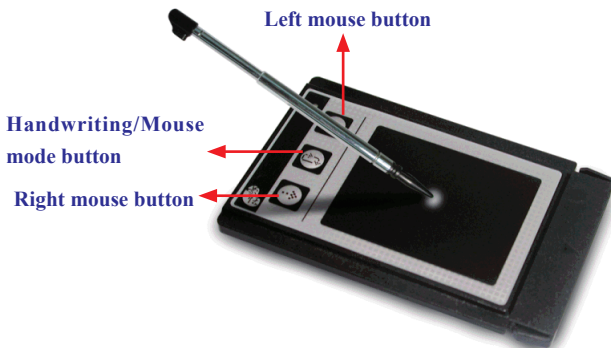




1.1.4 Penpower Junior miniCard

This mini touch pad is designed for use with notebooks. The size of a standard PC card (PCMCIA), it can be stored away in the notebook computer's PCMICA slot when not in use.

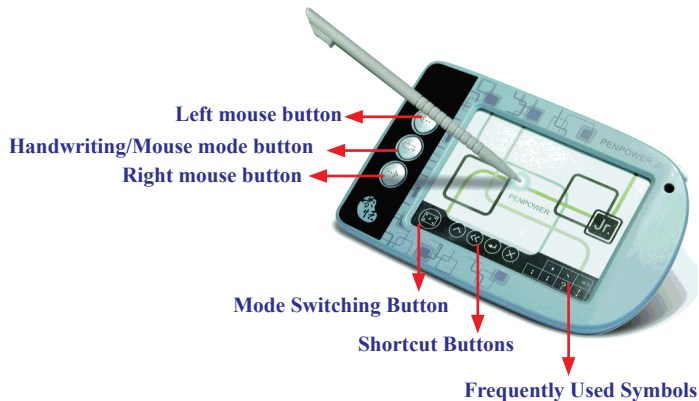
Active Pad Area: 1.7x1.3"



1.1.5 Carefree Pen

The user can change the picture card under the touch pad surface at any time.

Active Pad Area: 3x2"



Mode Switching Button:

Under new handwriting/mouse mode clicking on this button switches between the handwriting and mouse mode; in traditional mode, clicking on this button switches between full-screen and writing pad handwriting modes.

Shortcut Buttons:

From left to right, these are used for Insert Space, Delete Previous Character, New Line and Delete Next Character.



Introduction

Unicode recognition kernel

Supports the Unicode system to input Traditional and Simplified Chinese easily.

All-in-one recognition kernel of Big5 and GB

The characters that can be recognized includes more than 23,000 Chinese words, 4941 words unique to Hong Kong, alphabet, numeric, symbols, Hiragana and Katakana.

Artificial Intelligence recognition kernel

After you correct the recognition result from the candidate or AI dialog, the system will modify its recognition database to adapt your personal writing style. This will improve your recognition rate.

Full screen multi-words free writing

You can write multiple words at one time before recognition based on the advanced character segmentation technology.

Free writing recognition kernel

Not only can you write strokes in any order but even careless or illegible continuous writing can be recognized correctly.

Smart handwriting/mouse mode

This brand-new Penpower mouse is more intuitive and easier to use. Additional symbols and symbol shortcuts are also provided for your convenience.

Other auxiliary functions

Other useful functions such as related phrase, related word, special symbol table, homophone, dictionary, learning string, color inking and sound effect. all make input easier.

Word learning wizard

An all-new word learning wizard makes it easy to set up and manage your learning dictionary.

Chinese-English translation

Online dictionary with real-time translation between Chinese and English with 139,000 English to Chinese and 76,000 Chinese to English entries.

Penpower VoiceReader

Integrate the Text-to-Speech technology to read aloud the Chinese article content within any window.

Transparent signature

Superimpose your signature directly into a Microsoft Word or Excel document without changing the document layout. Or insert your signature into IE, Netscape and Eudora e-mails and send it to other people.

Pop-up bar

The visual user interface is hidden but always available. The function tool bar pops up on the word where the cursor is.

Mail Alert (Only supported by Crystal Touch, Silver/Steel and Diamond)

Auto receive email from internet and announce the user by blink or music.



Mail account management (Only supported by Crystal Touch, Silver/Steel and Diamond)

Support account filter and multi-account management.

Inking on MSN Messenger

If you have MSN Messenger 6.1 or above installed, you can transmit hand-writing and hand-drawn graphics through MSN Messenger for that extra personal touch.

Fast User Switching

Windows XP/Vista Fast User Switching is supported so every user can have access to their personal settings.

Chapter 2 Installation

2.1 System Requirement

1. Intel Pentium processor or compatible
2. 64MB RAM
3. 150MB disk space
4. Windows 2000/XP/Vista
5. USB Port

2.2 Handwriting Software Installation

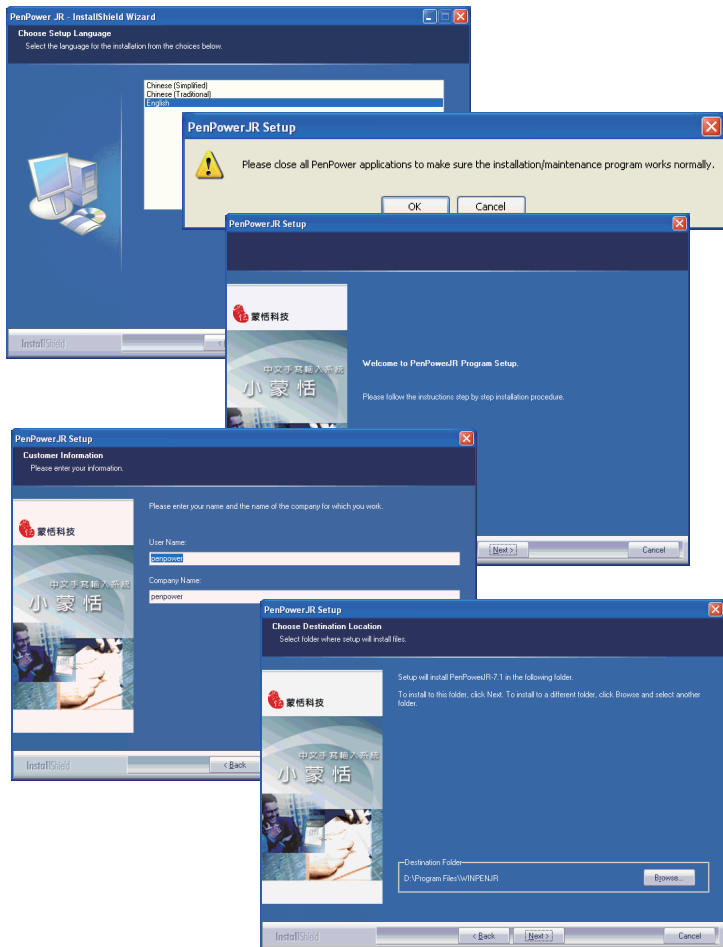
1. Please insert CD-ROM disc into the CD-ROM drive and the system will automatically launch setup.exe. Select the “Install Penpower Jr.” option.

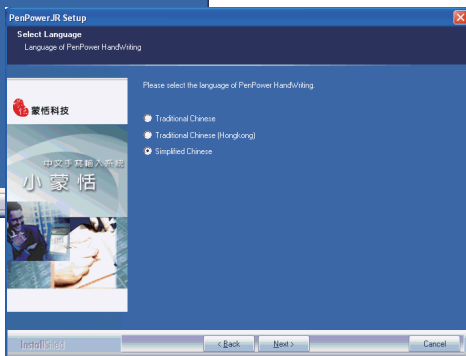
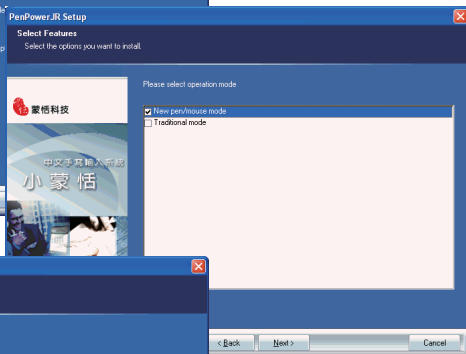
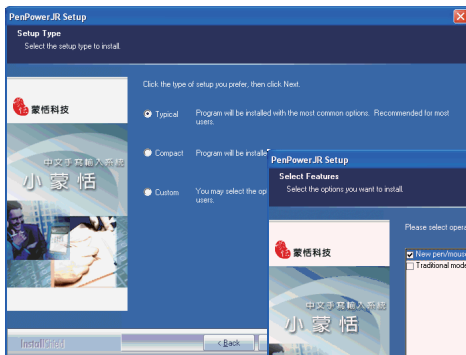


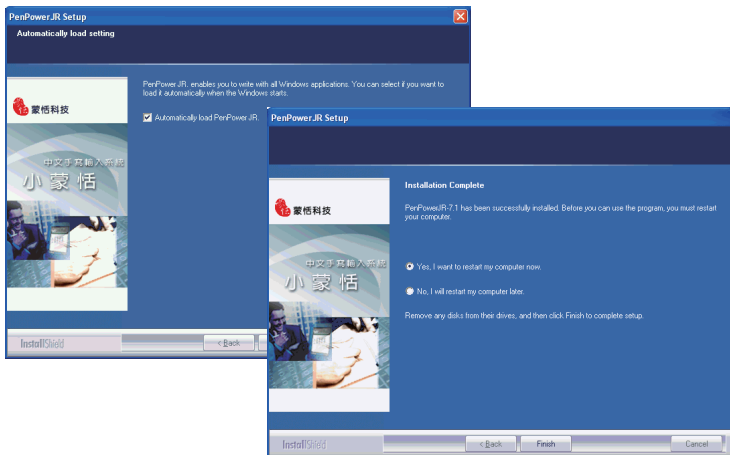
2. Please select your Penpower Junior model then press the “Confirm” button.



3. Please select the language version you wish to install then press “Confirm”. Please close all Penpower applications to ensure that the install/repair process will run properly. Follow the instructions on screen and carry out the installation process as directed. When installation is complete, please restart your computer.





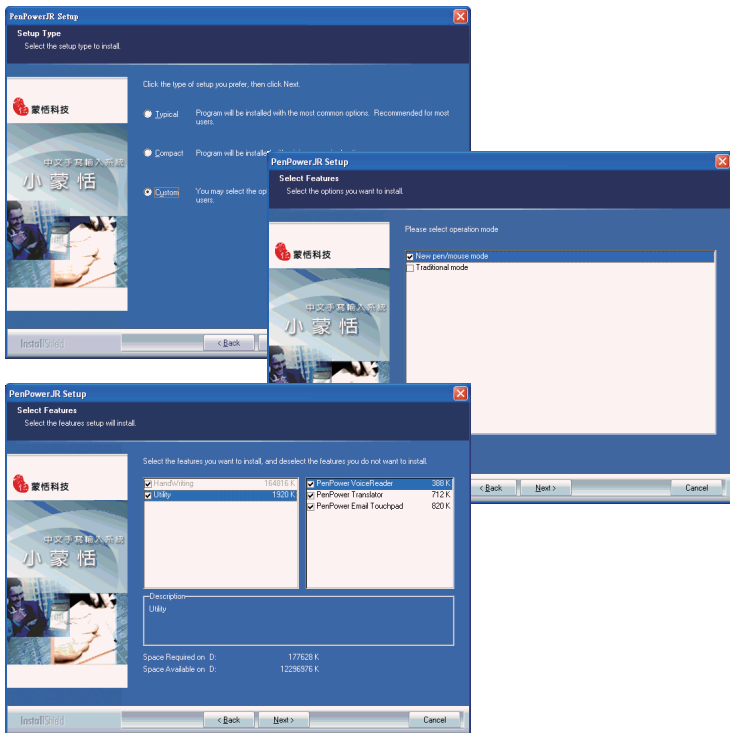


Note: You can select the setup type of typical, compact, or custom.

Note: You can select the language of handwriting recognition kernel.

Note: Enable to auto-load the handwriting software when the windows starts.

Note: Penpower Junior offers two handwriting modes: Traditional and New Handwriting/Mouse. We recommend that you choose to install the New Handwriting/Mouse mode. If you are an existing Penpower Junior user and prefer to use the Traditional mode then you may choose to install the Traditional mode instead. The two modes only differ in their interface but have the same set of functions.



2.3 USB Human Interface Device Installation

Connect the touch-pad with USB port on computer.

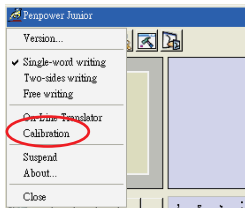


Chapter 3 Hardware Operation

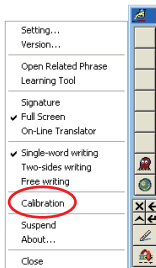
3.1 Calibration

After finishing installation, you can handwrite right away. If the inking you write is not centered on screen, you need to calibrate your touch pad to remap the active area.

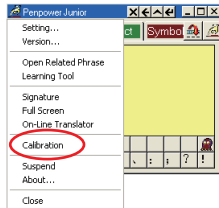
1. If you chose to install the New Handwriting/Mouse mode, please click the “Calibration” option from the Mouse menu to start the touch pad calibration program; if you chose to install the Traditional mode, please choose the “Calibration” option from the Full Screen or Writing Pad menu to launch the touch pad’s calibration program.



New Mouse mode

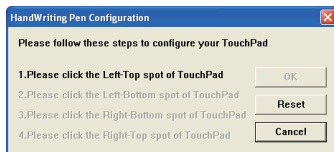


Traditional Full Screen mode



Traditional Writing Pad mode

2. Tap the four corners of the touch pad starting from the top-left in a counterclockwise direction.








TIP : After calibration, the new configuration would take effect immediately. You do not need reboot or reload Penpower Jr. handwriting system.

Note: When calibrating the Penpower miniCard please orient the touch pad so it's in landscape mode.

3.2 Touch Pad Operation

1. **Move:** Put the pen on the touch pad, and then move it on the panel gently.
2. **Click:** Press the pen to the surface of the touch pad and lift once. 
3. **Dragging:** Press the pen to the surface of the touch pad twice quickly; the second touch move the pen on surface of the touch pad. 
4. **Double click:** Press the pen to the surface of the touch pad twice quickly. 
5. There are three buttons on the touch pad. In Mouse mode the left and right buttons have normal mouse functionality and the middle button is defined to switch between pen mode and mouse mode. In Pen mode the left button is used for error correction. When you tap the left button, the latest recognized result is replaced with the next candidate word to let you correct the result quickly without switching to Mouse mode.

TIP : The three buttons are not on a line for some touch-pad.
The alone one is the middle button.

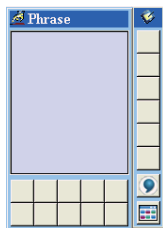
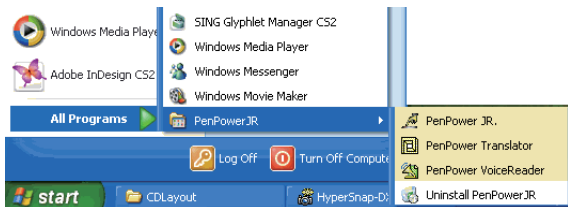
TIP : You can click the mode  button on the window to switch mouse mode and pen mode.



Chapter 4 New Handwriting/Mouse Mode




4.1 Run Penpower Jr. Handwriting System

Run “Start/All Programs/PenpowerJr/Penpower Jr.”

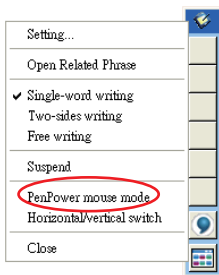


4.2 Switching Modes

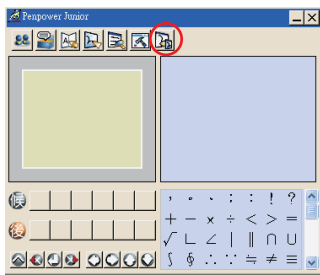
When Penpower Junior is started for the first time it will start in handwriting mode.

Left mouse click the Menu button  or right mouse click the toolbar  to display the options menu. Select Penpower mouse mode to switch to the mouse mode. In mouse mode, click on the Switch button  to switch back to handwriting mode.

TIP: The middle function button on the Penpower Junior touch pad allows fast switching between the handwriting and mouse modes.



Handwriting mode



Mouse mode

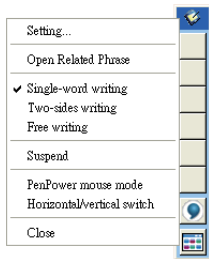
4.3 New Handwriting/Mouse Mode

4.3.1 Handwriting Mode Taskbar

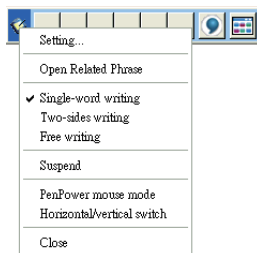
- * **Suspend:** Temporarily close the toolbar. To reopen the toolbar point to the Suspend and click Writing Mode.

TIP: You can also minimize the handwriting mode toolbar by double-clicking it.

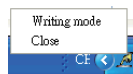
- * **Horizontal/Vertical Switch:** Switch between the horizontal and vertical layout of the toolbar.



Vertical Switch



Horizontal Switch



Suspend



4.3.2 Full Screen Handwriting Mode

There are three different options of full screen mode in the main menu.

Single-word writing

You can write one word only at one time. You can not handwrite the next word until the recognition of the current word has been completed.

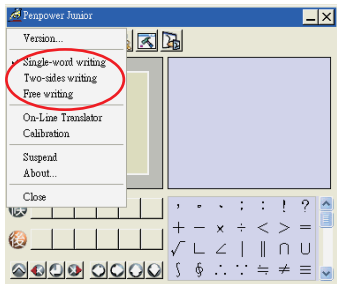
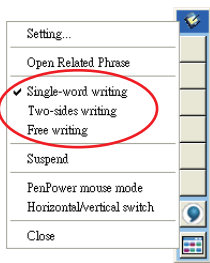
Two-sides writing

After the first stroke is written, a vertical line is displayed in the center of screen. All the strokes written on the one side of the line are considered part of one word.

Starting a new stroke on the other side means that the last word is finished and you've started to write the next word.

Free writing

You can handwrite multiple characters at one time before recognition. Forty one characters at most is allowed. You can write left-to-right or top-to-bottom. Remember to keep adequate distance between two contiguous words when you write. The amount of distance affects character segmentation.



4.3.3 How to Write

In Free writing mode, it's better to keep strokes of the same word closed, and not overlap words when you write. You need to finish writing every stroke of each word.

Correct:

Write three words 『明日月』.



Incorrect:

Overlap between two words. All the strokes may be recognized as one word.



Incorrect:

The two parts of one word are written far away from each other. The strokes may be segmented into two words.




Auto Phrase Correction:

Penpower Jr. automatically proofreads your writing content to improve the recognition rate. For example, if you continuously write 『天下太平』 (peace on the earth), but the character 『天』 is incorrectly written as 『夫』, so the characters are 『夫下太平』, Penpower uses its internal phrase dictionary to correctly recognize your intended result 『天下太平』.

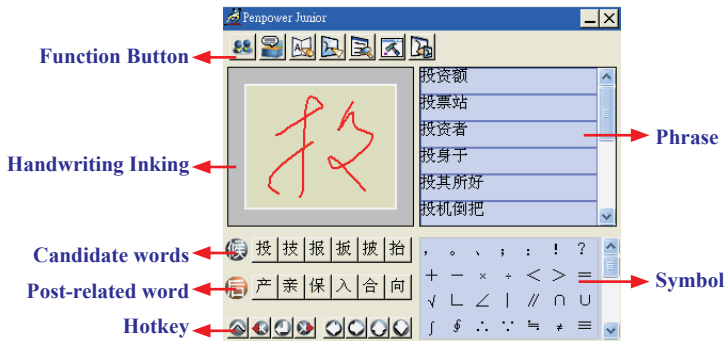


4.3.4 How to quickly fix errors, enter phrases and symbols

When writing, candidate words based on the previous input will be displayed on the handwriting toolbar. Each tap of the left function button on the touch pad will move the candidate words forward by one and also correct the results, allowing errors to be quickly fixed; the right function button allows the input of six habitual symbols. Alternatively, select a candidate word on the handwriting toolbar to correct it. Click the symbols table  button with the mouse to open the symbols table and enter the corresponding punctuation symbol.

You can also tap the middle function button on the touch pad to switch to the mouse mode. In mouse mode, select the candidate word for the candidate words, post-related word, phrase or select symbol input.

For example: in handwriting mode, the input 『蒙恬科技』 had the character 『技』 misread as 『投』. Here you can click the middle function button on the touch pad to switch to the mouse mode then choose from the candidate words field 『技』 to correct the mistake. Once fixed, tap the middle function button to switch back to the handwriting mode and continue writing.














4.4 Balloon UI

This unique user interface let you edit recognition result freely in any application. The visual user interface is hidden but always available. When you want to correct a word, just rest the cursor on this word for a moment. The function tool bar will be appear where the cursor is.

蒙恬气泡式介面



TIP: You do not need to click any button after the cursor is placed on the word.

In the function tool bar, click candidate words, AI button , homophone , pre-related word , post-related word  or phrase correction  to correct the result. click  button to see the raw inking. Click the  button to see the tutor. Click the  button to input punctuation symbol. Click the  button to split one word. Click the  button to merge the word with next word. The  button is for the Chinese-English translation function. Details are provided further on.


Note: In New Handwriting/Mouse mode the balloon interface commands can be used only with the mouse.

Note: The Balloon Interface can be used in Microsoft Office, IE, WordPad, but on 64-bit systems, it can not be used in some software, ext. note.

4.5 Result Correction

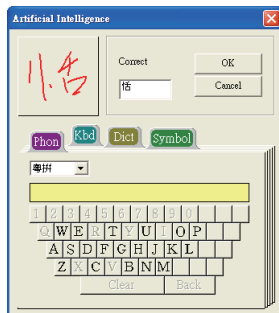
When you use candidate words or the AI button to correct result, Penpower Jr. will modify its recognition database to adapt your personal writing style. This may improve the recognition rate.

4.5.1 By Artificial Intelligence

1. Handwrite some words. The result would be sent in the caret.
2. For example, 『恬』 is wrongly recognized as 『恰』.
3. Rest the cursor on the word 『恰』 for a moment to display the command tool bar.
4. Click the candidate word if the correct word is there.
5. Otherwise click the AI button  to open the AI correction dialog.
6. Input the correct word 『恬』, and then click “OK”.
7. You'll see the wrong result 『恰』 is already updated as 『恬』. Your personal writing style of inking has also been learned.


蒙恰科技

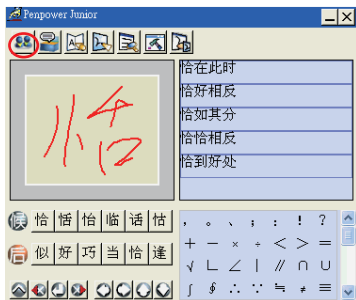
蒙恰科技



蒙恬科技

TIP: You can also click the touch pad's middle button to switch to the mouse mode.

If the correct word appears among the candidate words, simply click it to make the change. If the correct word is not among the candidate words, press the “Penpower AI”  button to open the AI dialog box to train the software.





4.5.2 By related word


For any two contiguous words, the first one is the pre-related word of the second one. The second one is the post-related word of the first one.

e.g. 『科技』, 『科』 is the pre-related word of 『技』, and 『技』 is the post-related word of 『科』.

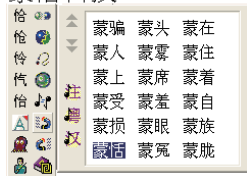
1. Handwrite some words. The result in the caret e.g. 『恬』 is wrongly recognized as 『恰』, and 『科』 is wrongly recognized as 『料』.

2. Rest the cursor on the word
『恰』 for a moment to display
the command toolbar.


蒙恰科技

3. Click the  button to open the
window of pre-related phrases.
If the correct phrase 『蒙恬』 is
in the list, click it to update the
result.

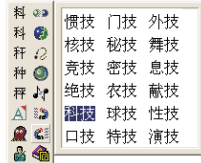
蒙恰科技



4. Rest the cursor on the word
『料』 for a while to display the
command toolbar.

5. Click the  button to open the
window of post-related phrases.
If the correct phrase 『科技』 is
in the list, click it to update the
result.

蒙恰科技




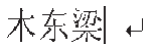
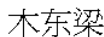
6. You'll see the wrong result 『蒙
恰科技』 is already updated as
『蒙恬科技』.

蒙恬科技

4.5.3 Merge

When some strokes of one word are written far away from each other, they may be recognized as several words. You can use the Merge command to combine them into one word.

1. Handwrite two words 『栋梁』 by free writing. The result is sent to the caret.
2. If 『木』 and 『东』 is written far away from each other, you may wrongly get three words of result 『木东梁』.
3. Rest the cursor on the first word 『木』 for a moment to display the command toolbar.
4. Click the  button to merge 『木』 and 『东』 into 『栋』.




Note : Only two continuous words can be merged at one time.



4.5.4 Split

When two words are written too close, they may be recognized as single word. You can use split function to separate it into two words.

1. Handwrite four words 『日月星辰』 by free writing. The result would be sent in the caret.
2. If 『日』 and 『月』 is written too close, you may wrongly get three words of result 『明星辰』.
3. Rest the cursor on the word 『明』 for a moment to display the command toolbar.
4. Click the  button to separate 『明』 into 『日』 and 『月』.

明星辰


明星辰|



明星辰



日月星辰|

4.5.5 Phrase Correction

In Full Screen mode if you wish to enter a common phrase such as an idiom and if you aren't sure of how to write one of the characters you can substitute a similar-sounding character instead. If you are not sure of the character's pronunciation either, choose any at random. When you have finished writing the phrase, select the uncertain character with the mouse then click the Phrase correction  button. Penpower Jr. will examine the four characters before or after this particular character to guess what you meant and make the change.

1. When entering an idiom in Full Screen mode such as 『拔苗助长』, if you are not sure of how to write the character 『拔』, you can enter the character 『一』 instead to input 『一苗助长』.
2. Rest the mouse on the character 『一』 for a moment to display the “Candidate Characters Window”. Click the Phrase correction button  and the 『一』 character will be changed to 『拔』.
3. If Phrase correction displays multiple candidate words, these will be shown as candidate words for you to choose from. For example, if the input was 『股份一限公司』 when you pause the mouse cursor over the 『一』 character, the “Candidate Characters Window” displays. Clicking the Phrase correction button  displays a list of all phrase correction candidate words for you to choose and make the correction with.

一苗助长

一苗助长



拔苗助长

股份一限公司






4.6 Homophone

If you forget how to write some words or they are too complicated to write, you can write down some other easy homophone to get the word that you would like to input. For example, If you want to input the word 『豫』:

1. Write any one homophone of 『豫』, for example. 『玉』. The result would be sent in the caret.

2. Rest the cursor on the first word 『玉』 for a moment to display the command toolbar.

3. Click the  button to display the window of homophone words.



4. You can Click the  /  /  button to toggle other BoPoMo homophone/Cantonese homophone/Beijing homophone.

5. Click 『豫』 to replace 『玉』.

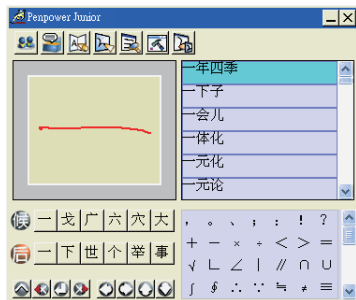
豫

4.7 Related Phrase

4.7.1 Input words by Related Phrase

1. Write the first word of one phrase. e.g. If you want to input the phrase 『一年四季』, just write the first word 『一』.
2. Tap the middle button on the touch pad to switch to Mouse mode. All the phrases beginning with this word 『一』 will be listed on the phrase area of the Mouse mode.
3. Click the phrase or memorized word that you want to send it into the caret. e.g. 『一年四季』.

一




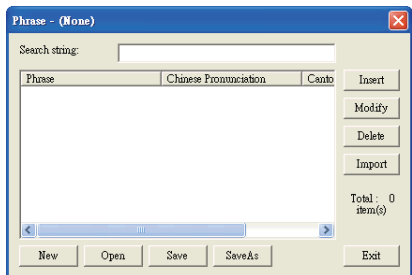
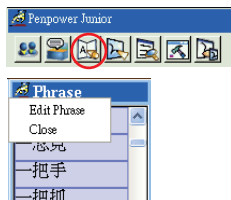
一年四季



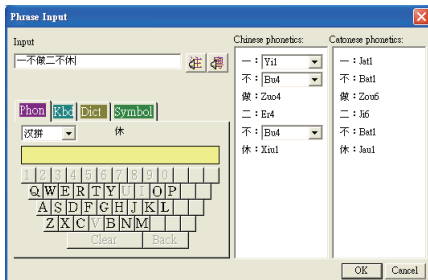
4.7.2 Update Phrase Database



There are thousands upon thousands default phrases that can be recognized by Penpower Jr. handwriting recognition. You can also customize the phrase database to meet your needs.

1. In Mouse mode press the “Phrase” button . Or in Handwriting mode, click “Associations Dictionary” and then click “Edit Phrase” to display the “Phrase” dialog box.



2. Click “insert”. The “Phrase Input” dialog displays. You can input a new phrase here. For example, if you want to insert 『一不做二不休』 as a phrase, input 『一不做二不休』.



Update the phonetics on the right side. Click the  /  buttons to hear the pronunciation and check if the one you chose is right.

Note : The maximum length of one phrase is 200 word. In fact, the phonetics is only for VoiceReader to read text with right sound of phonetics. Setting the phonetics for a phrase is optional.

Click “OK” to finish insertion. Afterward, if you write 『一』 , then 『一不做二不休』 is displayed in the phrase window. Just click it to input.

3. Select a phrase from the list, and then click “Modify” to update the phonetics of this phrase. Click “Delete” to delete this phrase from database.
4. In “Search string” field, you can only input part of a phrase to find this phrase quickly.
5. You can use the “New”, “Open”, “Save” and “Save As” commands to manage your phrase database (*.yib).

Note: Although you can create several phrase databases, you can choose only one at one time.

6. Import file

Click “Import” and select one phrase database (.yib) or text file to import it into current database.

The text file format must follow this rule - one phrase in each line. You can edit it with any text editor such as NotePad.

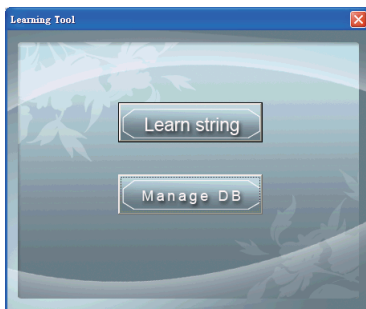
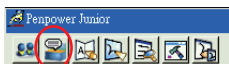
Note: Every imported phrase would have its own phonetics by default. The phonetics may be wrong. You can modify them from phrase dialog.



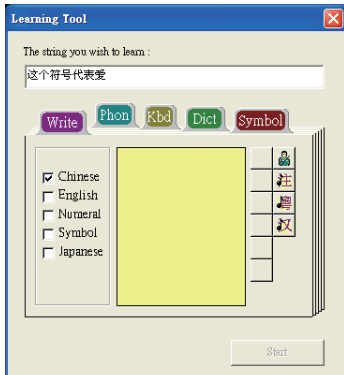
4.8 Learning String

A string is represented by an inking of symbol. So, you can handwrite the symbol anytime and the recognition engine will recognize it as the expanded string, helping you avoid redundant writing.

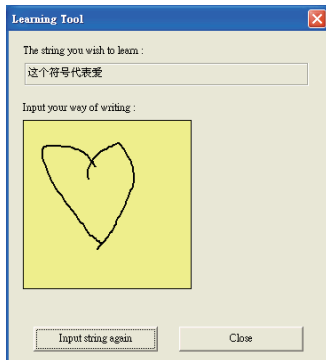
1. In Mouse mode, click the “Learning Tool” button and click “Learn String”. The “Learning Tool” dialog box displays.



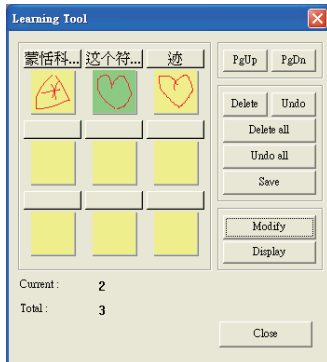
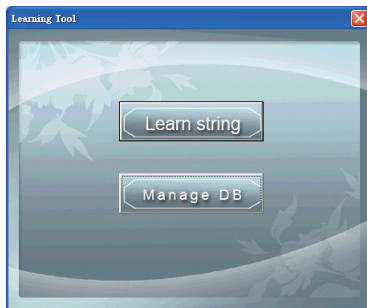
2. Enter the string you want to learn, then click “Start”.



3. Write down your inking twice according to the hint.



4. Click “Manage DB” tag, You can browse the animated inking or any the string you have ever learned here.





4.9 Gesture

Penpower Jr. supports four standard inking gesture. You can handwrite these gestures to simulate keyboard input.

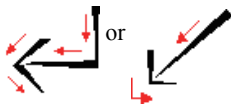
1. Delete : simulates the DELETE key.



2. Backspace : simulates the BACKSPACE key.



3. Enter : simulate the ENTER key.



4. Space : simulate the SPACE key.



4.10 Mix Traditional and Simplified Writing

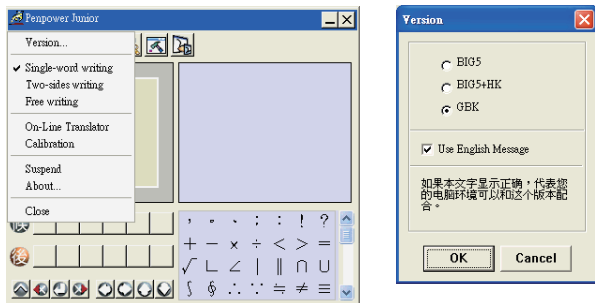
You can mix writing traditional and simplified Chinese words. For example, you can handwrite the two words 『書寫』.



Whatever you write, set the recognition engine to determine whether the output is shown as Traditional or Simplified Chinese. See 4.12.1 for more details.


4.11 Switch Version

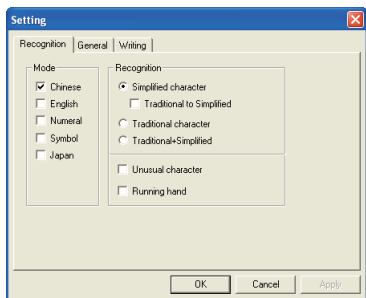
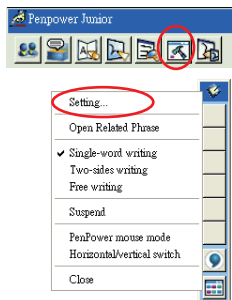
1. In Mouse mode, click Penpower Junior options, then click “Version...”.



2. Under the Win2000/XP/Vista operating systems for Traditional Chinese, Traditional Chinese (Hong Kong) or Simplified Chinese the output of the handwriting recognition is always encoded using Unicode. If, after switching versions, you cannot see the message displayed correctly at the bottom of the dialog box, your Windows operating system may not support the version you chose.
3. Select “Use English Message” to display all the messages of Penpower Jr. hand writing system in English.

4.12 Setting

In Mouse mode click the Setting button  or in Handwriting mode Setting. At the Setting dialog box you choose settings for the recognition engine, output format or writing inking.



4.12.1 Recognition Setting

Mode:

The recognition mode of Chinese, English, Numeral, Symbol and Japanese can be selected individually. You can select several modes at the same time.

Recognition:

- * **Simplified character:** All the results are in Simplified Chinese. If you do not know how to write traditional words, you can clear “Traditional to Simplified” so your writing is not recognized incorrectly as Traditional Chinese.

Note: The Traditional to Simplified option is available only when you switch to simplified version.

- * **Traditional character:** All the results are in Traditional Chinese.
- * **Traditional+Simplified:** You will get traditional words while using traditional writing, and get simplified words while using simplified writing.

Unusual character:

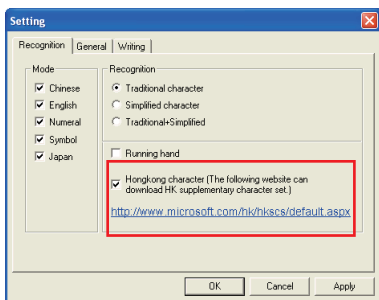
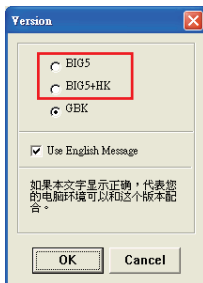
Penpower Jr. recognizes some unusual words when you select “Unusual character”.

Running Hand:

Select this option to recognize run-on cursive.

Hongkong Character:

This recognition mode is available only when the Penpower Jr. is set to BIG5 or BIG5+HK. You can connect to <http://www.microsoft.com/hk/hkscs/default.aspx> to download the Hong Kong characters list.





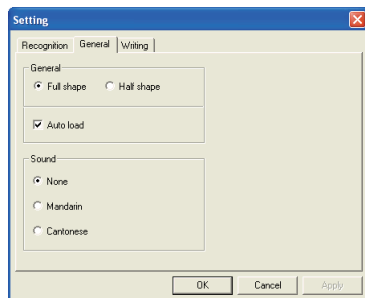
4.12.2 General Setting

Half shape/Full shape :

To decide whether the hand-writing result of alphanumeric is recognized as one-byte ASCII code or double-byte code.

Auto load:

Start Penpower Jr. when Windows starts.

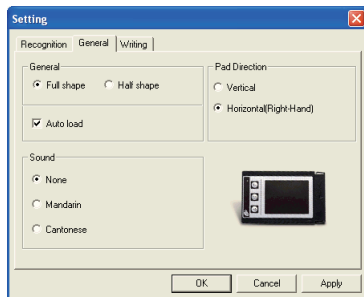


Sound:

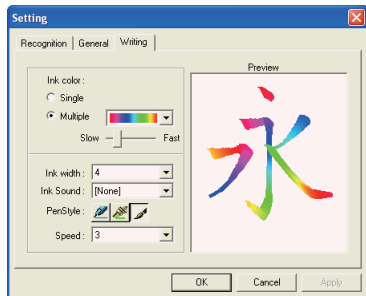
Pronounce the character in Mandarin or Cantonese immediately after recognition.

Touch Pad Direction:

If you are using Penpower Junior miniCard, you can use this feature to set the orientation of the touch pad as Horizontal or Vertical. By default the touch pad is set to Horizontal (Right-Hand) but you can use this setting to change it to portrait.



4.12.3 Writing Setting



Ink color:

Select the color of inking. You can adjust the smoothness of color gradation when selecting “Multiple”.

Ink width:

Select the thickness of inking.

Ink sound:

Select the sound effect while writing.

Pen style:


Select the pen style.

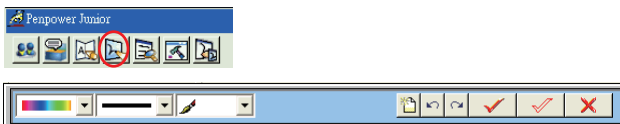
Speed:

Select the writing speed. The less the relative value is, the shorter the timeout for recognition after you’ve stopped writing.



4.13 Signature

1. Move the caret to where the signature will be.
2. Select the Mouse mode and click the “Signature” button . The “Welcome to Penpower Signature Tool” screen will be shown and you are now in the signature mode.



3. In Signature mode, the right button is defined to toggle pen mode and mouse mode. You must switch to Pen mode before signing your signature. The left button is defined to change color.



: Change the color of inking.



: Change the thickness of inking.



: There three kind of pen style to change.




: Clear all.




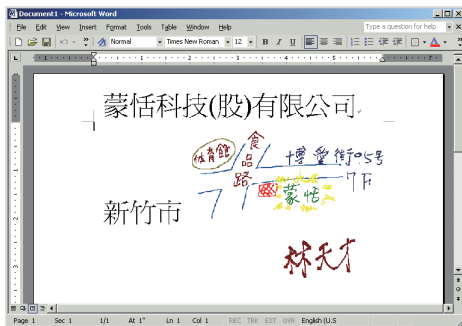
: Undo one stroke.




: redo one stroke.

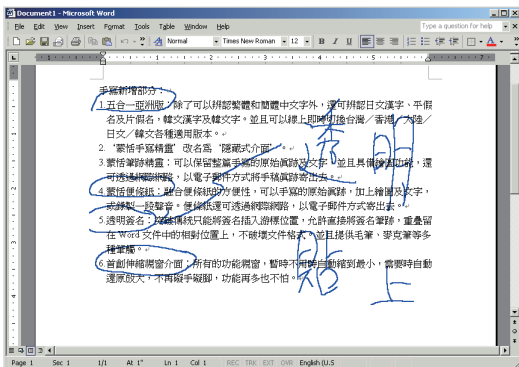
4. Click the  button to cancel signature.

5. Click the  button to insert your signature in the caret.




6. Click the  button to overlap your transparent signature in an MS Word or Excel document.

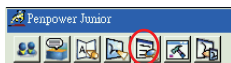
Note: You can use the transparent signature in the latest version of Word and Excel, but Office 2007 not support this function. You may make notes and commentary by using the transparent signature feature.



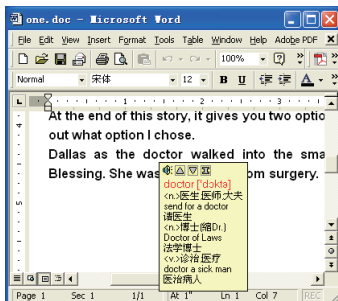
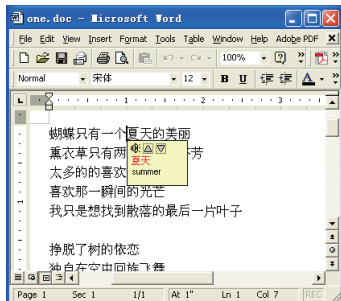






4.14 On-Line Translator

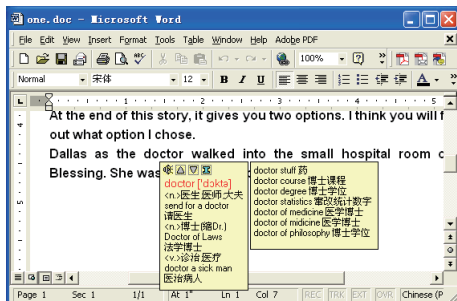
1. Select Mouse mode and click the “On-Line Translator” button  to activate the “On-Line Translator”. Press the button again to inactivate.




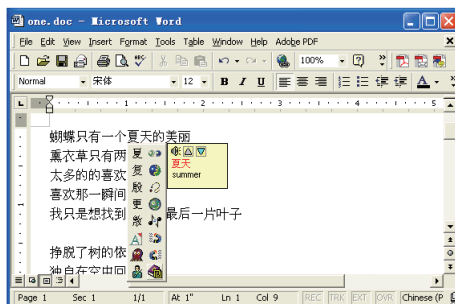
When reading English or Chinese articles, if you encounter unknown characters or phrases, rest the cursor over the characters, and a translation tip displays with additional information in English and Chinese.



When you move the cursor outside the interactive scope, the tip disappears. In the window, you can press the “Play”  button or “Character”  /  or “phrase explanation” buttons .





Online translation is used in the balloon interface. When you want to look up a character's translation, select the  button from the candidate window.



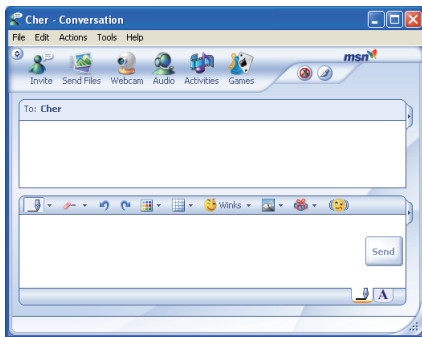


4.15 Using Penpower Jr. in MSN Messenger

Note: You have to install MSN Messenger version 6.1 or higher.

After you have signed in to the MSN Messenger, double-click the person's name to display the conversation box. Below this conversation box, there are two modes for you to select: "Handwrite"  and "Type" . You can switch between the input modes as you like.

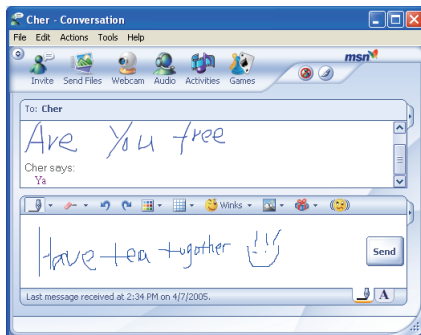
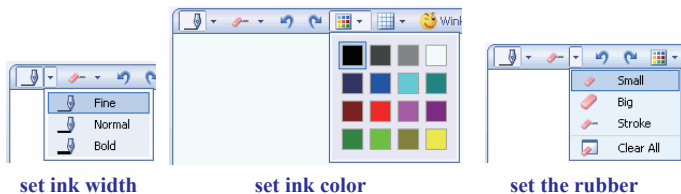
Note: If you can't activate the handwriting mode, please visit the Microsoft website and install the necessary handwriting components.



In the "Handwrite mode", you can set the font size and font color. When done, you can write on the tablet and the words will appear in the font size and color set.

If you want to clear the words you have written, you can use the eraser shown in the scroll bar.

After you have input your message, click "Send" to send your handwritten message.

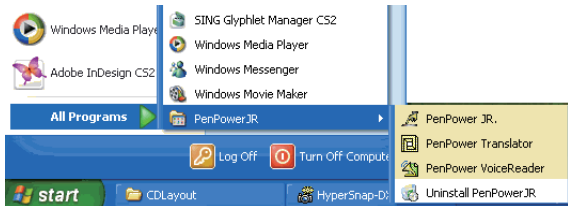





Chapter 5 Traditional Mode

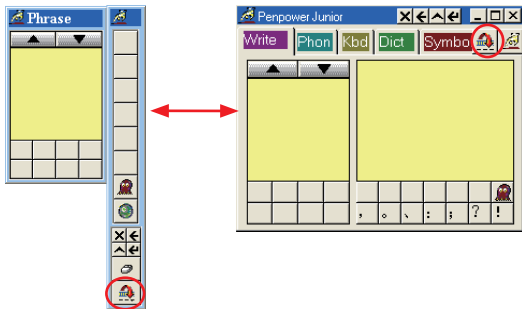
5.1 Run Penpower Jr. Handwriting System

Run “Start/All Programs/Penpower Jr/Penpower Jr.”.



5.2 Writing Mode

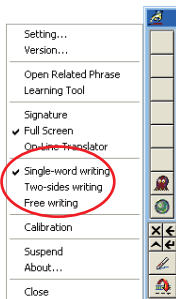
There are two kind of writing modes. One is “Full-Screen” mode, the other one is “Writing-Pad” mode. You can click the  button to toggle these two writing mode.



5.3 Full Screen Handwriting

There are three different options of full screen mode in the main menu, Single-word writing, Two-sides writing and Free writing.

Please see Chapter 4.3 for more details.



5.3.1 Balloon UI

This unique user interface let you edit recognition result freely in any application. The visual user interface is hidden transparently.

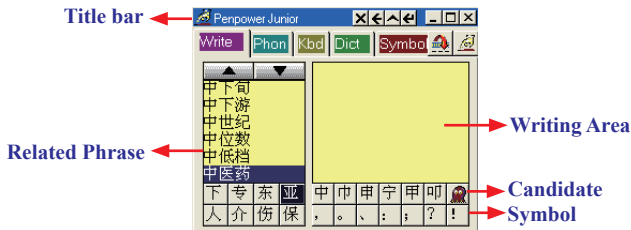
When you want to correct some word, just move the cursor position on this word for a while. The function tool bar will be popped up there where the cursor is.

Please refer to Chapter 4.4-4.6 for more details.

5.4 Writing-Pad

It contains four input methods such as Phonetic, Keyboard, Dictionary, and Symbol.

5.4.1 Write Input Tool



You need to click the middle button or click on the writing area switching into pen mode before you start writing. The color of writing area will change from gray into yellow.

The left button would be revised for error correction on pen mode. While you press the left button once each time, the latest recognized result would be replaced with the next candidate word. It lets you correct the result quickly without switching to mouse mode.

Click the middle button or click on the writing area again to switch into mouse mode. The color of writing area will change from yellow into gray.

Rest the cursor on Penpower Input Tools for normal size. Otherwise Penpower Input Tools appears as an small icon  to avoid taking up space on the screen.



5.4.2 Phonetic Input Tool

There are three types of phonetic input built in: Zhu yin, Yue Pin and Han pin. You can also create your own phonetic input.

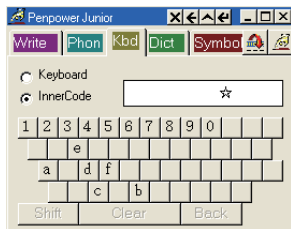
How to Use

1. Select one type of phonetic input: Han pin, Yue Pin or Zhu yin.
2. Click the screen keyboard buttons one by one in order.
3. The converted candidate character is listed in the text buffer.



5.4.3 Keyboard Input Tool

- * Keyboard : Simulated software keyboard.
- * Inner Code : e.g. The inner code of [☆] in hexadecimal is A1B8. Click A 1 B 8 on the screen keyboard in order in order to get [☆].



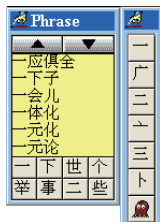


5.5 Phrase

5.5.1 Use Phrase to input words

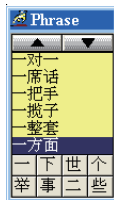
1. In both the Full Screen and Writing-Pad modes the Associations dictionary window will always be displayed.

Note: In Full Screen Handwriting mode, if the Associations dictionary is closed, select “Open Related Phrase” from the menu to reopen it.



2. Write down the first word of one phrase. e.g. If you want to input the phrase 『一方面』, just write the first word 『一』.
3. All the phrases beginning with this word 『一』 will be listed on the top.
4. All the memorized words you have ever written right following this word 『一』 will be listed on the bottom.
5. Click the phrase or memorized word that you want to send it into the caret. e.g. 『一方面』.

一

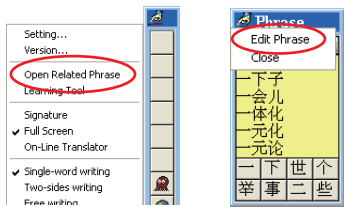


一方面

5.5.2 Update Phrase Database

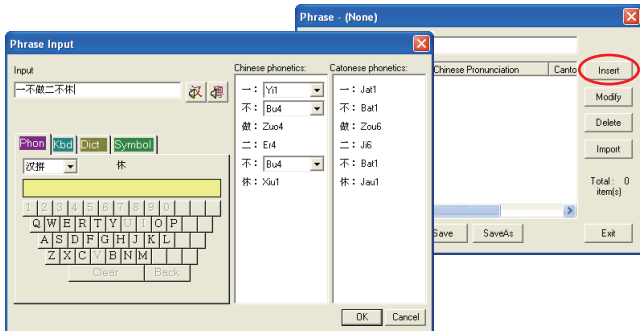
There are thousands upon thousands default phrases that you can use in the Penpower handwriting recognition. It also allows you to customize the phrase database to meet your needs.

1. Open the PenPower Junior main menu and select “Open Related Phrase”. Then select “Edit Phrase” from the Phrase menu to open the “Edit Phrase” dialogue to edit the dictionary.



2. Click “Insert” to open the phrase input dialog. You can input a new phrase here.

Please see Chapter 4.7.2 for more details.



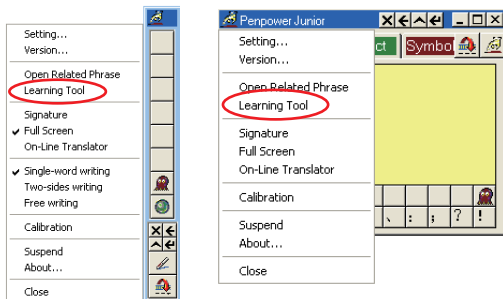


5.6 Other Functions

Learning Tool

Select the “Learning Tool” from the main menu to open the Learning Tool dialogue.

Please see Chapter 4.8 for more details.



Gesture

Penpower Jr. handwriting system support four standard inking gesture. You can handwriting these gestures to simulate keyboard input.

Please see Chapter 4.9 for more details.

Mix Traditional and Simplified Writing

You can mix writing traditional and simplified Chinese words. Whatever you wrote, choose different recognition engine to decide the results being traditional or simplified words.

Please see Chapter 4.10 for more details.

Switch Version


Open the main menu. Select “Version...”. There are three Versions for Choose. Please see Chapter 4.11 for more details.

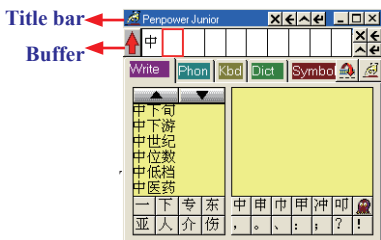
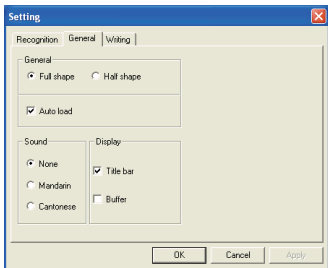
Setting

In PenPower Junior’s options menu select “Settings” to open the settings page. You can configure the recognition engine, output format or writing tracks here. For more details on PenPower settings please refer to the explanation provided in Chapter 4.12. The only difference is that in Traditional mode the writing pad display can be configured here.

Please switch to the “General” setting page and in the “Display” area you can choose whether to display the window title and the buffer area.

Title bar : Show/hide the caption of writing-pad.

Buffer: Show/hide the text buffer of Writing-pad. If the buffer is displayed, all the recognition result would be put here. After the buffer is full, the first word would be popped out into the caret. You can also click  button to force all the result popped out and clear the buffer anytime. If the buffer is hidden, the recognition result will be send to the caret directly.





Signature

Move the caret to where the signature will be. Then select “Signature” from the main menu to open the “Welcome to Penpower Signature Tool” screen, and enter in signature mode.

Please refer to Chapter 4.13 for more details.

On-Line Translator

Select “On-Line Translator” from the main menu to open the On-Line Translator function. Select again to close the function.

Please refer to Chapter 4.14 for more details.

Using Penpower Jr. in MSN Messenger

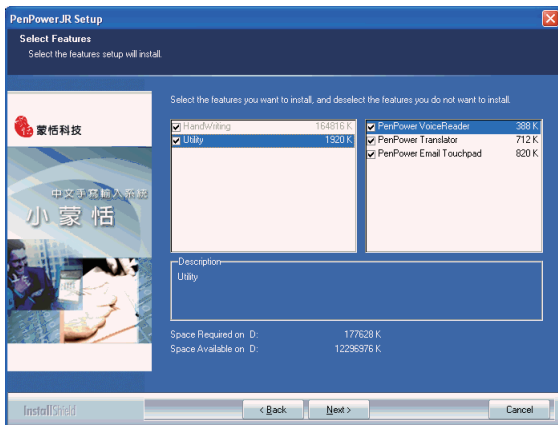
If you have to install MSN Messenger version 6.1 or higher and Penpower Jr., you can use Penpower Jr. touch pad to input or draw in MSN.

Please refer to Chapter 4.15 for more details.

Chapter 6 Assistant Tools

When you install Penpower Jr. handwriting software, you can choose custom installation to install the Assistant Tool: Penpower VoiceReader, Penpower Email Touchpad and Penpower Translator.

Note: The “Penpower E-mail Function” is only available with the Crystal Touch, Silver/Steel and Diamond models.






6.1 Penpower VoiceReader


Use the Text to Speech (TTS) technology to read aloud the content of Chinese articles in any window.

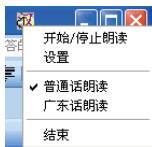
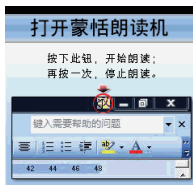
6.1.1 Use Penpower VoiceReader


1. Run “Start/All Programs/Penpower Jr/Penpower VoiceReader”.

Note: Before run Penpower VoiceReader, please launch Penpower Junior first or the system will prompt you to do so.


2. After Penpower VoiceReader starts, the small icon  is displayed on the right top corner of the application.


3. First select a paragraph of text, then click , and select “开始/停止朗读”. The selected text will be read aloud. You can choose Mandarin or Cantonese pronunciation from the menu.



4. If you click  without selecting first, and then select “开始/停止朗读”, the text is read aloud from caret location.



Note: The Windows Vista 64-bit edition does not support direct Text-to-Speech. You must select some text before you can use the Text-to-Speech.

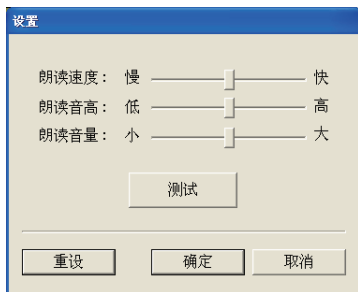
5. You can click , and click Start/Stop Text To Speech again to stop reading.

6. Click , and click Exit to exit the Penpower VoiceReader.



6.1.2 Reading Setting

1. Click , select “设置” to open the setting dialog.
 朗读速度 : Adjust the speed of reading.
 朗读音高 : Adjust the tone of reading.
 朗读音量 : Adjust the volume of reading.
1. Click , and click “设置”. The Setting dialog displays.
 朗读速度: Adjust the reading speed.
 朗读音高: Adjust the reading pitch.
 朗读音量: Adjust the reading volume.
 Click “测试” to preview the settings, if desired.

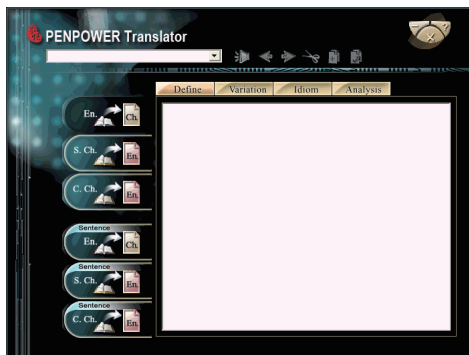


6.2 Penpower Translator

This is Chinese-English bi-directional translation software, which includes Chinese-English/English-Chinese dictionary lookup and Chinese-English/English-Chinese phrasal translation.

Run “Start/All Programs/Penpower Jr/Penpower Translator”.

Note: Before run Penpower Translator, please launch Penpower Junior first or the system will prompt you to do so.




6.2.1 English Words

1. Click the “En. Ch.” button on the left.
2. At the upper-left corner in the input box, type an English word and press Enter to see the Chinese translation.
3. Click different tabs to look up definitions, variations, idioms and analysis.




6.2.3 English Article Translator

1. Click the “Sentence En. Ch.” button on the left.
2. At the upper left-hand corner, input the text to be translated and explained in the pane and click  to translate.

Tip: When you translate a whole article, make sure there's a period at the end of each sentence. Having a period at the end of each sentence will increase the accuracy of translation.




6.2.4 Chinese Article Translator

1. Click the “Sentence S. Ch.En.” button translation on the left.
2. At the upper left-hand corner, input Chinese text, click the  button to start translation. The translation result is shown in the lower pane.

Tip: If the Chinese sentence you're looking up is Traditional Chinese, please select the “Sentence C. Ch. En.”.



Click the Speech  button. If looking up a single character or word, the Translator will provide its Chinese or English pronunciation. If translating the entire text, it will read all of the content in the current input window.

The other buttons on the translator interface have the following functions:



: Previous/Next: look up the definitions for nearby words.



: Cut: cut the selected content (only available when translating an entire sentence).



: Copy: copy the selected content.



: Paste: paste the cut or copied content. (Only available when translating an entire sentence)



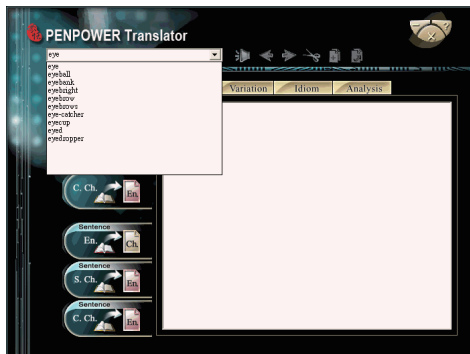
: Delete: delete all input and translation content (only available when translating an entire sentence).



: Save: click this button; the Save as dialog displays. This will save all of the input and translated content into a new .txt file (only available when translating an entire sentence).




When looking up a single word you do not need to enter the entire word. If the word you wish to look up shows up in the list, use the direction keys to select that word as the input, then press “Enter” to look up that word.

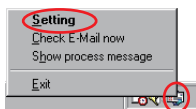


6.3 Penpower E-mail Touchpad

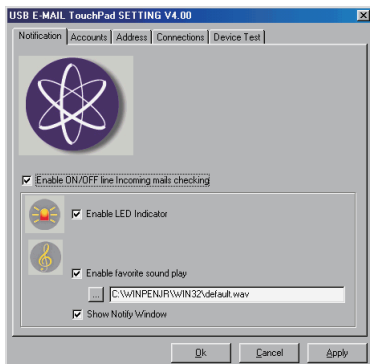
Note: The Penpower E-mail function is only supported for Penpower Junior Crystal Touch, Penpower Junior Silver/Steel and Penpower Junior Diamond.

6.3.1 Setting

If you have custom-installed the “Penpower Email Touchpad” component, the email icon  would be displayed on the task bar when the windows start-up. Double-click the icon or right-click the icon to open the menu, and then select “setting”. It will invoke the setting dialog.



Enable ON/OFF line incoming mails checking : Enable/disable the function of auto mails checking.



Enable LED Indicator : Blink the LED of touch-pad to hint the incoming emails.

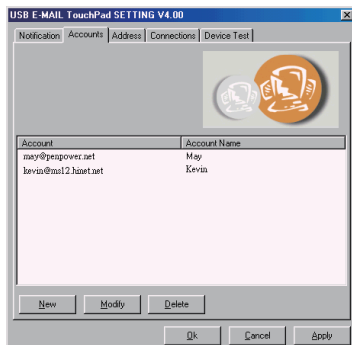
Enable Favorite Sound Play : Change the wav file of music to hint the incoming emails.

Show Notified Window: Show pop-up window to hint the incoming emails.



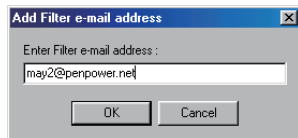
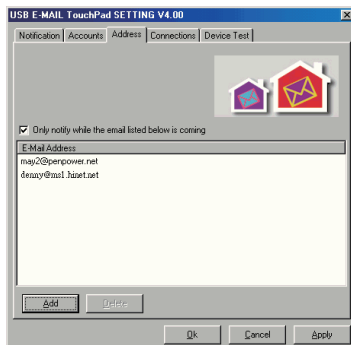
6.3.2 Accounts Management

You can manage multiple accounts to receive all the emails at once.



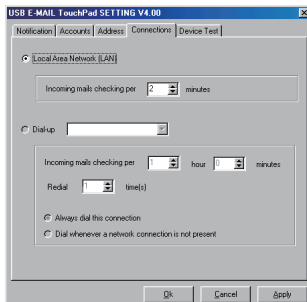
6.3.3 Email Address filter

You can filter your unnecessary emails. Check this option to notify you only when the listed email is coming.




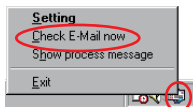
6.3.4 Connection

You can choose to check email through local area network (LAN) or dial-up internet. You can also set the period time to check email. If your system is offline, after dial-up and check email, it will be disconnected automatically.



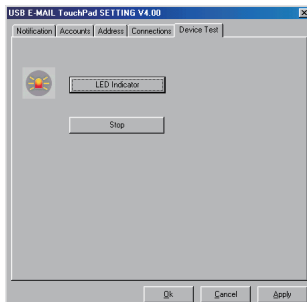
6.3.5 Check email manually

If you want to check email manually, right-click the email icon  to open the menu, and then select "Check Email now".



6.3.6 Device Test

You can click "LED Indicator" button to test if the LED of touch-pad is normal.



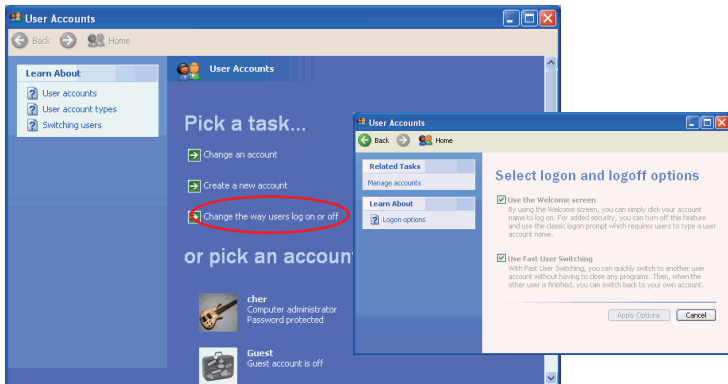


Chapter 7 Fast User Switching

Penpower Jr. supports “Fast User Switching” when you have more than one user account in Windows XP/Vista. Fast User Switching allows all users to use Penpower Jr. without reinstalling them on each account.

To activate “Fast User Switching” click the “Start” button, point to “Settings” and click “Control Panel”. Click “User Accounts” and then click “Change the way users log on or off”. Select “Use the Welcome screen and Use Fast User Switching” and then click “Apply Options”.

Penpower Jr. will work now no matter which account is used to log in.





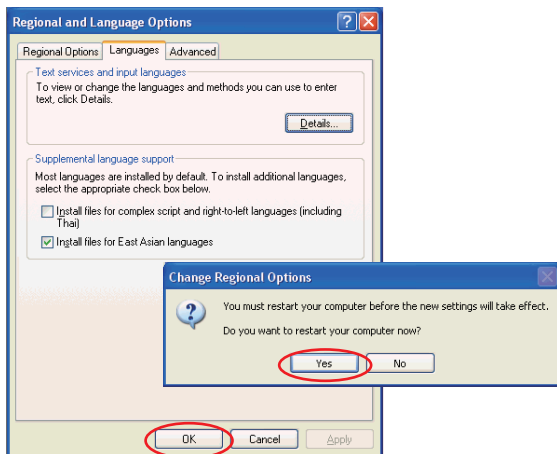
Appendix FAQ

Can the Penpower Jr. be installed under English environment?

Yes. If you use the Windows 2000/XP English operating system then the system may not properly display Chinese characters. We therefore recommend setting up your operating system environment's language encoding support before using Penpower Jr..

Setup Instructions for Windows XP English Operating Systems

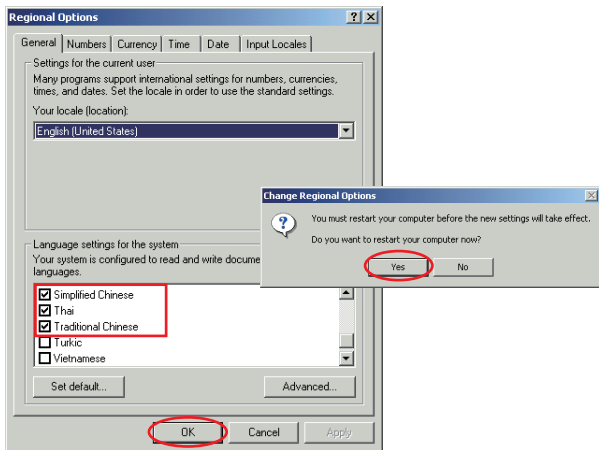
Click the “Start” button, and then point to “Settings”. Click “Control Panel”, then double-click “Regional and Language Options” and click the “Languages” tab. In the “Supplemental language support” area, select “Install files for East Asian Languages”, and then click “OK”. You must restart the computer before the settings will take effect. Click “Yes” to restart the computer.





Setup Instructions for Windows 2000 English Operating Systems

Click the “Start” button, and then point to “Settings”. Click “Control Panel”, then double-click “Regional Options” and click the “General” tab. In the “Language settings” for the system area, select “Simplified Chinese” and “Traditional Chinese”, and then click “OK”. You must restart the computer before the settings will take effect. Click “Yes” to restart the computer.



Penpower Jr. V7.1 User Manual

Penpower Technology LTD.

Edition: Second edition released November, 2007

