

Please read and save these instructions. Read carefully before attempting to assemble, install, operate or maintain the product described. Protect yourself and others by observing all safety information. Failure to comply with instructions could result in personal injury and/or property damage! Retain instructions for future reference.

Operating Instructions and Parts Manual

PC1

SPECIFICATIONS

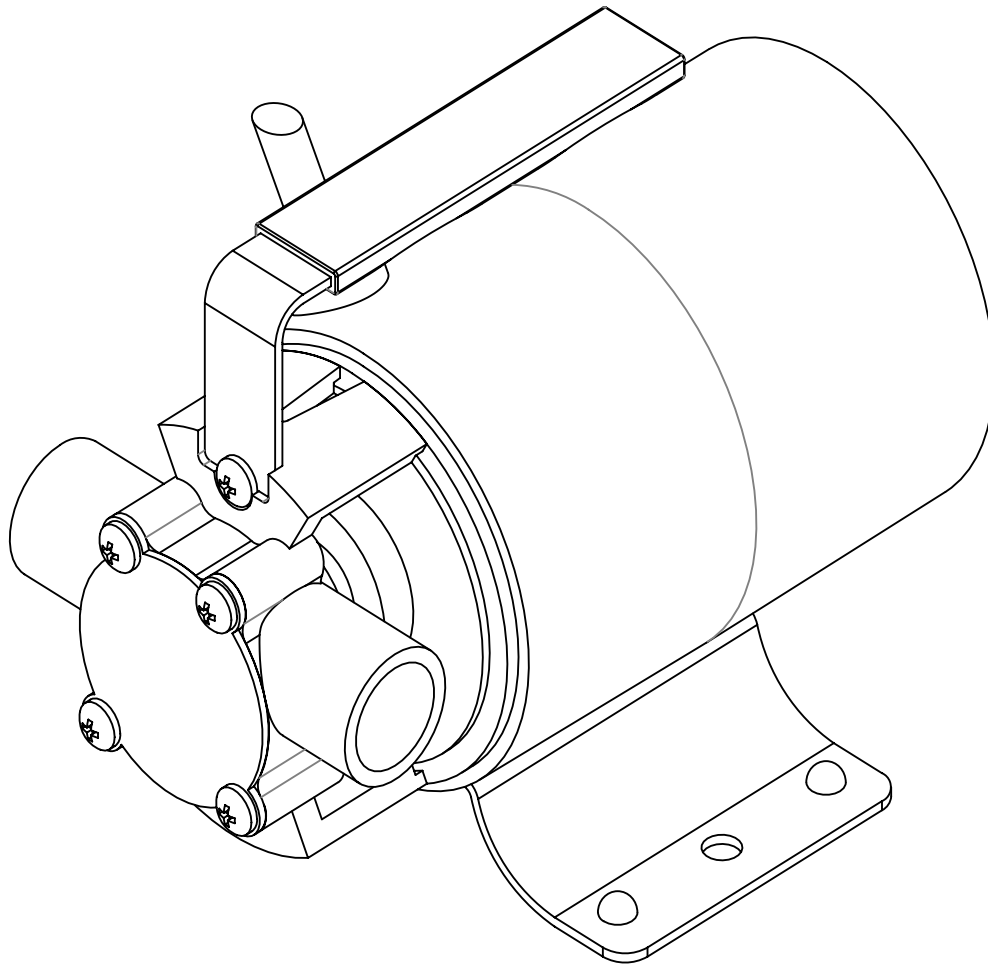
POWER SUPPLY REQUIREMENTS	12 V, DC
MOTOR	Brush Type
POWER	12 V
CIRCUIT REQUIREMENT	15 A (minimum)
LIQUID TEMPERATURE RANGE	40° F- 120° F

CONSTRUCTION

MOTOR HOUSE	Coated Steel
IMPELLER	Thermoplastic
VOLUTE	Plated Bronze
PUMP SUCTION	3/4 in. Plated Bronze Hose Fittings
PUMP DISCHARGE	3/4 in. Plated Bronze Hose Fittings

PERFORMANCE

Model	Volt	Discharge Head	0 ft.	5 ft.	10 ft.	15 ft.	20 ft.	25 ft.
PC1	12	Gal/hr	310	300	265	230	185	145



DESCRIPTION

This self-priming transfer pump is designed to easily transfer clear water from one point to another in a temporary application. This Transfer Pump is convenient when normal power is not readily available. Typical applications include removing water from pool covers, clogged drains, stock tanks, water basins, boats, cisterns, etc. Typical applications include removing water from waterbeds, clogged sinks, basements, etc. This model is non-submersible.

NOTE: This pump is not for drinking water, is not intended for permanent installation or long, extended periods of continuous operation.

UNPACKING

Inspect this unit before it is used. Occasionally, products are damaged during shipment. If the pump or components are damaged, return the unit to the place of purchase for replacement or call Customer Support (800-237-0987).

SAFETY SIGNAL WORDS

This manual contains information that is very important to know and understand. This information is provided for **SAFETY** and to **PREVENT EQUIPMENT PROBLEMS**. To help recognize this information, observe the following symbols.

⚠ DANGER Danger indicates an imminently hazardous situation which, if NOT avoided, WILL result in death or serious injury.

⚠ DANGER La mention Danger indique une situation dangereuse imminente qui, si elle n'est pas évitée, ENTRAÎNE la mort ou des blessures graves.

⚠ WARNING Warning indicates a potentially hazardous situation which, if NOT avoided, COULD result in death or serious injury.

⚠ AVERTISSEMENT La mention avertissement indique une situation potentiellement dangereuse qui, si elle n'est pas évitée, risque d'entraîner des lésions corporelles graves ou même la mort.

⚠ CAUTION Caution indicates a potentially hazardous situation which, if NOT avoided, MAY result in minor or moderate injury.

⚠ MISE EN GARDE La mention mise en garde indique une situation potentiellement dangereuse qui, si elle n'est pas évitée, pourrait entraîner des blessures mineures ou modérées.

NOTICE Notice indicates important information, that if NOT followed, MAY cause damage to equipment.

GENERAL SAFETY INFORMATION

⚠ WARNING

This product can expose you to chemicals, including DEHP, which is known to the State of California to cause cancer, birth defects and reproductive harm. For more information, go to www.P65Warnings.ca.gov.

⚠ AVERTISSEMENT

Ce produit peut vous exposer à des produits chimiques, notamment du DOP, reconnu par l'État de Californie comme étant cancérigènes et à l'origine d'anomalies congénitales et de problèmes de l'appareil reproductif. Pour plus de renseignements, visiter le site www.P65Warnings.ca.gov.

⚠ DANGER Do not submerge motor or allow motor to be exposed to water. Personal injury and/or death could result. Keep pump and power cords away from liquids.

⚠ DANGER Ne pas submerger le moteur ni laisser le moteur exposé à l'eau. Des blessures personnelles et/ou la mort pourraient en découler. Tenir la pompe et les cordons d'alimentation loin des liquides.



⚠ DANGER Do not pump gasoline or other explosive liquids. Do not operate pump where flammable or explosive fumes or gases are present as a fire or explosion could result. Pump should only be used to pump clear water. Do not run pump dry. This will void warranty.

⚠ DANGER Ne pas pomper de l'essence ou d'autres liquides explosifs. Ne pas faire fonctionner la pompe en présence de vapeurs ou gaz inflammables ou explosifs car cela risquerait de provoquer un incendie ou une explosion. La pompe doit être utilisée uniquement pour pomper de l'eau fraîche. Ne pas laisser la pompe fonctionner à sec, cela annulera la garantie.



REMINDER: Keep your dated proof of purchase for warranty purposes! Attach it to this manual or file it for safekeeping.

Operating Instructions and Parts Manual

GENERAL SAFETY INFORMATION CONTINUED

1. Read all manuals included with this product carefully. Be thoroughly familiar with the controls and the proper use of the equipment.
2. Protect electrical cord from sharp objects, hot surfaces, oil and chemicals. Avoid kinking the cord. Do not use if cord is damaged.



⚠ CAUTION *This pump has been evaluated for use with clear water only.*

⚠ MISE EN GARDE *Cette pompe a été évaluée pour être utilisée seulement avec de l'eau fraîche.*

INSTALLATION

This model includes a six foot long suction hose, a water suction attachment, and a replacement parts kit which includes: impeller, gasket, shaft seal and garden hose washer. A vegetable oil product for impeller lubrication is needed.

⚠ DANGER *Always disconnect power source before attempting to install, service, or maintain the pump. Never handle a pump with wet hands or when standing on wet or damp surface or in water. Fatal electrical shock could occur.*

⚠ DANGER *Toujours débrancher le cordon d'alimentation avant d'essayer d'installer, de réparer ou de faire l'entretien de la pompe. Ne pas manipuler de pompe avec les mains humides ou debout sur une surface humide ou mouillée, ou dans l'eau. Ceci pourrait occasionner un choc électrique mortel.*

1. PC1 operates on 12 V DC only. Voltage and current of power supply must match the requirements of the pump. This pump has color-coded battery clamps for 12 V operation. This pump requires 14 amps at 12 V DC (see Figure 1).

⚠ DANGER *Risk of fatal electrical shock. Cutting the cord or battery terminal clamps will void the warranty and make the pump inoperable.*

⚠ DANGER *Risque de choc électrique mortel. Couper le cordon ou les bornes de la batterie annulera la garantie et rendra la pompe inutilisable.*

2. Use a strainer when pumping from a creek, pond, or source where foreign objects may be sucked into the pump. The strainer should prevent solids from entering the inlet line.

3. A regular garden hose may be used as a discharge line.
4. The inlet or suction hose should not be longer than 15 feet; and the vertical distance between the pump and the water level should not be any higher than 10 feet. The maximum discharge height is 30 ft.
6. Motor should never be operated for more than 2 hours continuously. Critical heating can occur and might severely damage the pump and void warranty.

OPERATION

NOTE: Add 1 tablespoon of vegetable oil to both inlet and outlet to prime. Attach included 6 foot suction hose to inlet of pump. Attach garden hose to outlet of pump. There must be a gasket in place to insure that these connections are airtight, otherwise the pump will not prime.

1. Connect water suction attachment to the open end of inlet hose and place below water surface. (Water suction attachment is optional.)The water suction attachment is designed to fit the male end of a garden hose. Place the water suction attachment as near as possible to the middle of the water that is to be pumped.
2. Examine the inlet and outlet hoses to insure there are no blockages, kinks or bends.

⚠ WARNING *Place switch in "OFF" position before connecting or disconnecting battery terminal clamps.*

⚠ AVERTISSEMENT *Placer l'interrupteur en position « OFF » avant de connecter ou de déconnecter les pinces des bornes de la batterie.*

3. Connect pump to 12 V battery power source, with pump in a dry location. Motor must be connected to a fully charged automotive tractor or marine type battery to operate.
4. Connect the red clamp to the positive (+) type battery terminal. Connect the black clamp to the negative (-) type battery terminal. See 12V wiring diagram below (Figure 1).

IMPORTANT BATTERY INFORMATION

Be certain that the area around the batteries is well ventilated. Before servicing the batteries, blow away gasses by waving a piece of cardboard near the batteries.

⚠ WARNING *Not following these wiring directions will result in pump and/or property damage and void warranty.*

⚠ AVERTISSEMENT *Le non-respect de ces instructions de câblage entraînera des blessures corporelles et/ou des dégâts matériels, et annulera la garantie.*

⚠ DANGER *Dangerous hydrogen gas can be released from batteries while charging. Sparks can ignite the gas in an enclosed space. Wear safety goggles when connecting batteries. Battery connections should be made in a well-ventilated area.*

⚠ DANGER *De l'hydrogène dangereux peut s'échapper des batteries pendant le chargement. Les étincelles peuvent enflammer le gaz dans un espace clos. Porter des lunettes de sécurité pour brancher les batteries. Les connexions de la batterie doivent être effectuées dans un endroit bien ventilé.*

⚠ DANGER *Working in the vicinity of lead acid batteries can be dangerous. Before making connections or servicing the batteries, read and follow instructions in all applicable instruction manuals. To reduce the risk of battery explosion, follow the instructions in this manual and those published by the battery manufacturer, as well as those of any other equipment used in the surrounding area.*

⚠ DANGER *Travaillant à proximité des batteries au plomb peut être dangereux. Avant de faire les connexions ou l'entretien des batteries, lire et suivre les instructions dans tous les manuels d'instruction. Pour réduire le risque d'explosion de batterie, suivez les instructions dans ce manuel et celles publiées par le fabricant de la batterie, ainsi que ceux de tout autre équipement utilisé dans les environs.*

An assistant should be present or close enough to come to your aid in the event of an emergency. Have a reliable source of fresh water and soap nearby in case battery acid contacts clothing, skin or eyes.

Wear eye and clothing protection when working around lead acid batteries.

Avoid touching your eyes when working around lead acid batteries.

⚠ WARNING *If battery acid contacts your eye(s), flush with cold running water for 20 minutes and seek immediate medical attention. If acid contacts your skin or clothing, wash immediately with soap and water.*

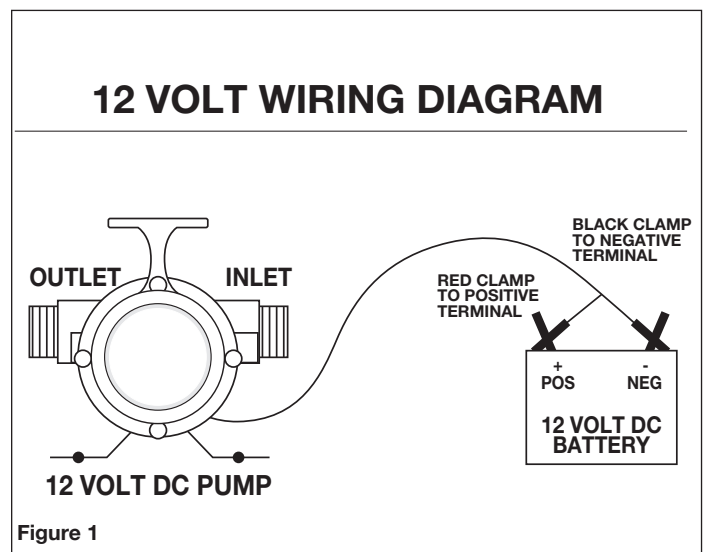
⚠ AVERTISSEMENT *Si l'acide de la batterie entre en contact avec les yeux, les rincer avec de l'eau froide pendant 20 minutes et consulter immédiatement un médecin. Si l'acide entre en contact avec la peau ou les vêtements, les laver immédiatement avec de l'eau et du savon.*

⚠ WARNING *Never smoke or allow a spark or flame in the vicinity of the battery.*

⚠ AVERTISSEMENT *Ne jamais fumer ou laisser une étincelle ou une flamme près de la batterie.*

⚠ WARNING *Avoid dropping metal tools on the battery posts because they may spark or short-circuit the system or battery, causing an explosion.*

⚠ AVERTISSEMENT *Éviter de faire tomber des objets en métal sur les bornes de la batterie : cela pourrait créer des étincelles ou des courts-circuits du système ou de la batterie, provoquant une explosion.*



MAINTENANCE

⚠ DANGER *Always disconnect power source before attempting to install, service, or maintain the pump.*

⚠ DANGER *Toujours débrancher le cordon d'alimentation avant d'essayer d'installer, de réparer ou de faire l'entretien de la pompe.*

IMPELLER REPLACEMENT

NOTE: These parts are designed to handle most clear, nonflammable liquids with slight amounts of abrasives. When impeller vanes become worn from use, or damaged due to pumping abrasive liquids or trash, pump performance will be reduced or prevented altogether and will void warranty.

1. Remove the four cover plate screws holding motor housing and pump housing together. Cover plate is now free and can be removed.
2. Inspect gasket and impeller for wear and damage. If there is any evidence of wear or damage, replace the part(s).
3. Lubricate new impeller with vegetable oil and reinstall by aligning flat on impeller hub with flat on motor shaft.
4. Reassemble gasket, cover plate, and cover plate screws.

SHAFT SEAL REPLACEMENT

Motor shafts are sealed with factory pre-lubricated lip-type seals which are good for the life of the pump. If the seal leaks, it is usually because the pump has handled abrasive liquids. If the motor shaft is scored (deep grooves), the complete pump must be replaced.

1. Remove and inspect impeller parts as specified in the impeller replacement instructions. Replace worn parts.
2. Remove two pump body mounting screws and slide pump body from motor. Pry out seal retaining ring and push worn shaft seal from inside of pump body.
3. Lubricate new seal with lightweight vegetable oil, push it into pump body with lip facing away from motor, and push in seal retaining ring.
4. Reassemble pump body onto motor with mounting screws. Follow steps 3 and 4 in Impeller Replacement.

NOTES

TROUBLESHOOTING CHART

Symptom	Possible Cause(s)	Corrective Action
Pump will not start or run	<ol style="list-style-type: none"> Blown fuse Low supply voltage Worn brushes Impeller blocked 	<ol style="list-style-type: none"> If blown, replace with proper sized fuse or reset breaker Voltage of battery must match the voltage of the 12 V pump Replace brushes (PC2 Only) Remove blockage
Pump will not prime or retain prime after operating	<ol style="list-style-type: none"> Air leak in suction line Impeller blocked Worn seal Suction lift too high Hose kinked or looped Fittings not tight Suction hose out of water Clogged inlet 	<ol style="list-style-type: none"> Repair suction line by tightening inlet connection or replace Remove blockage Replace seal Lower pump Straighten hose Tighten fittings Submerge suction hose end Clean inlet
Flow rate is too low	<ol style="list-style-type: none"> Inlet hose plugged or kinked Low supply voltage 	<ol style="list-style-type: none"> Clean or replace Voltage of battery must match the voltage of the 12 V pump
Shaft seal leaks	<ol style="list-style-type: none"> Worn seal Shaft grooved Pump head loose on motor 	<ol style="list-style-type: none"> Replace seal Replace pump Insure proper assembly and no obstruction, tighten bolts

LIMITED WARRANTY

For one year for PC1 model from the date of purchase, from an authorized dealer, Wayne Water Systems will repair or replace, at its option for the original purchaser, any part or parts of its Multi-Use Pumps or Water Pumps ("Product") found upon examination by Wayne Water Systems to be defective in materials or workmanship. Please call Wayne Water Systems (800-237-0987) for warranty instructions. Be prepared to provide the model number and the serial number when exercising this warranty. All transportation charges on Products or parts submitted for repair or replacement must be paid by purchaser. This Limited Warranty is not transferrable. This Limited Warranty does not cover Products which have been damaged as a result of accident, abuse, misuse, neglect, improper installation, improper maintenance, or failure to operate in accordance with WAYNE's written instructions.

This Limited Warranty does not cover Products which have been damaged as a result of accident, abuse, misuse, neglect, improper installation, improper maintenance, or failure to operate in accordance with Wayne Water Systems' written instructions.

THIS WARRANTY IS IN LIEU OF ANY AND ALL OTHER WARRANTIES, OBLIGATIONS OR AGREEMENTS, EXPRESSED OR IMPLIED, INCLUDING ANY IMPLIED WARRANTY OF MERCHANTABILITY OR FITNESS FOR ANY PARTICULAR PURPOSE, AND ANY RIGHTS OR REMEDIES AGAINST ANY PERSON OR ENTITY UNDER THE UNIFORM COMMERCIAL CODE OR OTHERWISE WITH RESPECT TO THE SALE OF THE PRODUCT. THE REMEDIES AND OBLIGATIONS STATED IN THIS WARRANTY ARE THE SOLE AND EXCLUSIVE REMEDIES OF AND OBLIGATIONS TO THE OWNER FOR ANY AND ALL MATTERS ARISING WITH RESPECT TO OR IN ANY WAY CONNECTED WITH THE PRODUCT, REGARDLESS OF THE SOURCE OR PROVIDER OF SUCH GOODS. IN NO EVENT, WHETHER AS A RESULT OF BREACH OF CONTRACT, WARRANTY TORT (INCLUDING NEGLIGENCE) OR OTHERWISE, SHALL WAYNE WATER SYSTEMS OR ANY AFFILIATE BE LIABLE FOR ANY SPECIAL, INCIDENTAL OR CONSEQUENTIAL DAMAGES.

You **MUST** retain your purchase receipt along with this form. In the event you need to exercise a warranty claim, you **MUST** send a **copy** of the purchase receipt along with the material or correspondence. Please call Wayne Water Systems (800-237-0987) for return authorization and instructions.

DO NOT MAIL THIS FORM TO Wayne Water Systems. Use this form only to maintain your records.

MODEL NO. _____ SERIAL NO. _____ INSTALLATION DATE _____

ATTACH YOUR RECEIPT HERE

For Replacement Parts or Customer Support, Call 1-800-237-0987

Please provide following information:

- Model number
- Serial number (if any)
- Part description and number as shown in parts list

Address parts correspondence to:

WAYNE Water Systems
101 Production Drive
Harrison, OH 45030 U.S.A.

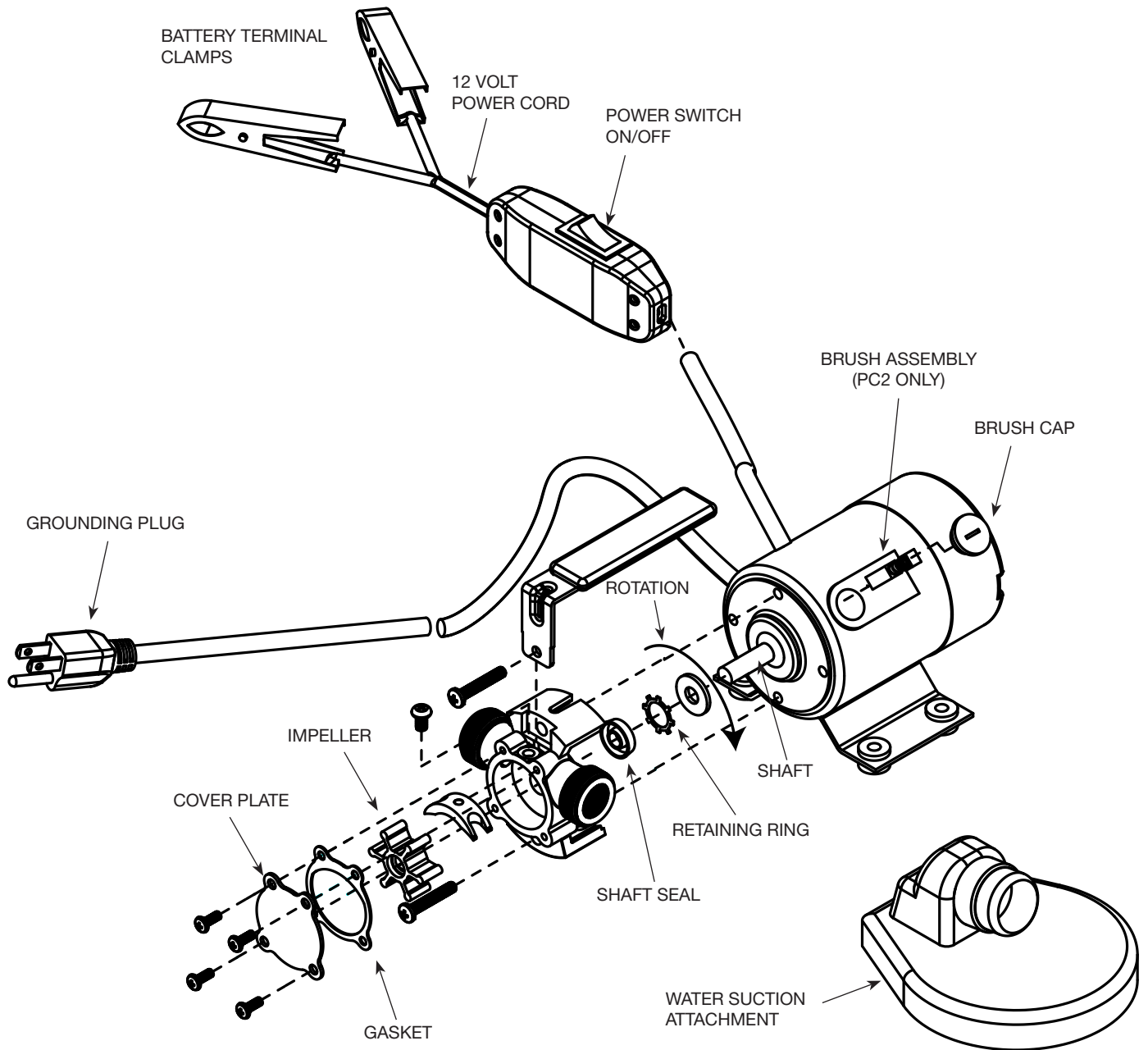


Figure 2 – Replacement Parts Illustration for Self-Priming Transfer Pumps

