



280 Machlin Court, City of Industry, CA 91789

(Tel) 800-790-1299 (Fax) 909-718-1949

NOTICE

Dear Customers:

Thank you for choosing our barbeque grill and hope that you enjoy our product.

Our gas valves and components are preset at the factory to operate on Liquid Propane (LP). If you wish to convert your grill from LP to Natural Gas (NG), we strongly recommend that you hire a professionally trained technician to convert the unit. Please understand that we will not be responsible for any liability, personal injury, or property damage resulting from an improperly converted grill.

We will provide warranty parts for this product after it is converted, however, we will not honor any warranty claims for parts damaged during the conversion of the original LP valves and orifices to NG configuration if the conversion is done improperly.

NG Conversion Kit for Item #: Model # 720-0582B

⚠ WARNING! FAILURE TO HEED THESE WARNINGS COULD RESULT IN A FIRE OR EXPLOSION THAT COULD CAUSE SERIOUS BODILY INJURY, DEATH OR PROPERTY DAMAGE.



Installation of this Natural Gas Conversion kit must be performed by a **QUALIFIED GAS TECHNICIAN ONLY**. DO NOT ATTEMPT TO INSTALL THIS KIT YOURSELF. Improper installation could result in a gas leak which could cause a fire or explosion and cause serious bodily injury, death or property damage. Leaks due to improper installation could occur immediately or slowly over time. If you hear any unusual noises or leaks, smell gas or unusual odors, or notice anything unusual with the operation of your gas appliance after the installation, immediately shut off the gas supply and discontinue use until the appliance is repaired by a **QUALIFIED GAS TECHNICIAN**.

If there are damaged or missing parts when you unpack this kit, call 1-800-790-1299. DO NOT have your **QUALIFIED GAS TECHNICIAN** attempt to install this kit until you receive replacement for any damaged or missing parts.

Orifice Chart

The different burner valves in this grill have different BTU ratings. This means that the amount of gas coming from each orifice varies in order to create the BTU's. The holes in the orifices themselves are drilled to different sizes so as to allow the proper amount of gas to flow through them. Please note the chart below as an easy reference for the various orifice opening sizes for the different valves in the grill.

720-0582B, 730-0582B orifice size

		Liquid Propane (LP)		Natural Gas (NG)	
		Orifice Size	BTU	Orifice Size	BTU
	Main Burner	1.02mm	12,000	1.70mm	12,000
	Searing Side Burner	1.15mm	15,000	1.90mm	15,000

Below tools are included in package:



Allen Key



6mm Wrench



6mm Nut Driver

Natural Gas Conversion for Item# /Model# 720-0582B

Warning: Make sure all grill components are completely cool and gas supply is turned off and removed from grill prior to performing the conversion.

NG Hose and Regulator Conversion

Tools required:

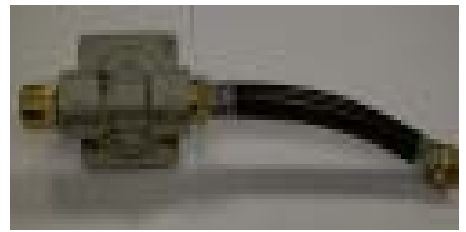
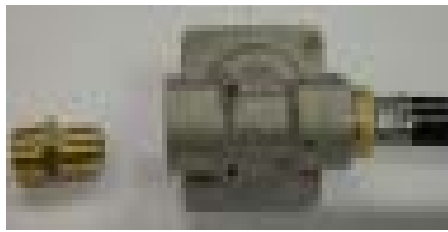


Phillips Head Screwdriver (+)



14mm wrench

1: Install the regulator hose (short hose) to the end of the regulator marked "OUT". Install the brass connector to the other end of the regulator marked "IN". (If regulator, hose, and brass connector are pre-assembled, you may disregard this step.)



2. Turn all knobs to OFF. Turn off LP gas supply and remove the LP cylinder from the grill cart. Remove the brass adapter of the LP regulator from the manifold with a wrench.



3. Install the NG regulator hose to the manifold and secure using a wrench. Tighten the NG regulator on the side panel with two 5/32*10mm screws that pre-assemble on the NG regulator.



Main Tube Burner Conversion

Tools required:



Phillips Head Screwdriver (+)



6 mm Nut Driver

Steps:

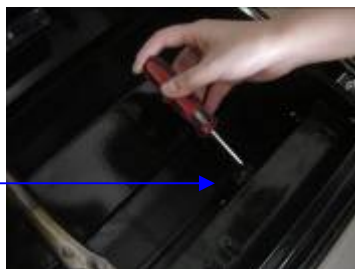
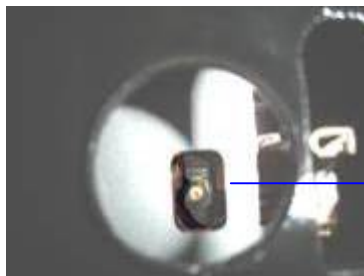
1. Remove the warming rack, cooking grids, and flame tamers.
2. Remove the main tube burners by removing the screws securing the burners near the back wall of the firebox and the screw near the front of the firebox that secures the igniter bracket to the burner. Gently lift the tube burners up and out.



3. Locate the orifice at the end of valve and remove by with adjustable Nut Driver.

The NG orifice is preassembled on the valve, behind the LP orifice.

Remove LP orifice for each of the main burners (total 4 tube burners).



4. Replace the tube burners and screw back into original position.



Searing Side Burner Conversion

Tools required:



Phillips Head Screwdriver (+)



6mm Wrench

The step-by-step instruction for converting the searing side burner's orifice are stated below.

1. Remove the screw under C bracket to take off the C bracket, then remove the searing side burner LP orifice with 6mm wrench.



2. Replace the NG orifice to the connector, then replace the C bracket to the original position.



For Main Tube Burner and Side Burner Conversion Only

(The 3 steps below are not necessary for the
Searing side burner)

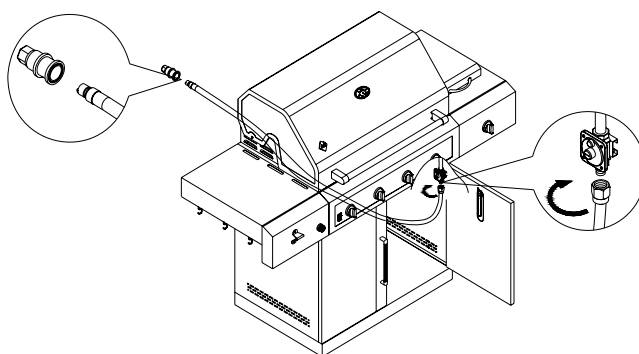
You will need to adjust the High Flame setting screw when converting the barbecue from Propane to Natural Gas. Please follow the steps as detailed below.

1. Remove each Control Knob of main tube burners and side burner by loosening the socket head grub screw with the Allen Key.
2. Use a screw driver to turn the High Flame Set Screw counterclockwise approximately 90 degree.
3. Check that burner operates at the new high fire setting - it may be necessary to adjust the screw setting slightly to get the ideal burner flame height.



Warning!! Gas Valves are preset at the factory to operate on LP gas or NG gas. If you wish to convert, be sure to consult your gas supplier or trained technician for the conversion.

- A. After the Natural Gas regulator has been installed, attach the PVC Gas hose to the regulator (See drawing below).
- B. Connect the other end of the PVC Gas Hose to the house gas line using the quick-connect fitting. To use the quick connect fitting, lift the head of the connector back. Insert the end of the PVC hose and release the head of the connector. Ensure connection is secure.



There is a brass adapter for natural gas lines that are pre-regulated. If the gas line is not pre-regulated, remove the brass adapter and connect the regulator directly to the PVC gas hose.



Once conversion is complete, please attach the NG CSA certification sticker to the grill.
If you should have any questions regarding natural gas conversion, please contact customer service at 1-800-790-1299.

NG Conversion Kit for Item # 881611/Model# 720-0584A

⚠ WARNING! FAILURE TO HEED THESE WARNINGS COULD RESULT IN A FIRE OR EXPLOSION THAT COULD CAUSE SERIOUS BODILY INJURY, DEATH OR PROPERTY DAMAGE.

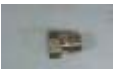



Installation of this Natural Gas Conversion kit must be performed by a **QUALIFIED GAS TECHNICIAN ONLY**. DO NOT ATTEMPT TO INSTALL THIS KIT YOURSELF. Improper installation could result in a gas leak which could cause a fire or explosion and cause serious bodily injury, death or property damage. Leaks due to improper installation could occur immediately or slowly over time. If you hear any unusual noises or leaks, smell gas or unusual odors, or notice anything unusual with the operation of your gas appliance after the installation, immediately shut off the gas supply and discontinue use until the appliance is repaired by a **QUALIFIED GAS TECHNICIAN**.

If there are damaged or missing parts when you unpack this kit, call 1-800-790-1299. DO NOT have your **QUALIFIED GAS TECHNICIAN** attempt to install this kit until you receive replacement for any damaged or missing parts.

Orifice Chart

The different burner valves in this grill have different BTU ratings. This means that the amount of gas coming from each orifice varies in order to create the BTU's. The holes in the orifices themselves are drilled to different sizes so as to allow the proper amount of gas to flow through them. Please note the chart below as an easy reference for the various orifice opening sizes for the different valves in the grill.

720/730-0584A

		Liquid Propane (LP)		Natural Gas (NG)	
		Orifice Size	BTU	Orifice Size	BTU
	Main Burner	1.12mm	14,000	1.87mm	14,000
	U-shape Burner	1.07mm	13,500	1.82mm	13,500
	Searing Side Burner	1.15mm	15,000	1.90mm	15,000
	Rear Burner	0.94mm	10,000	1.55mm	10,000

Below tools are included in package:



Allen Key



6mm Wrench



6mm Nut Driver

Warning: Make sure all grill components are completely cool and gas supply is turned off and removed from grill prior to performing the conversion.

NG Hose and Regulator Conversion

Tools required:



Phillips Head Screwdriver (+)



14mm wrench

1: Install the regulator hose (short hose) to the end of the regulator marked "OUT". Install the brass connector to the other end of the regulator marked "IN". (If regulator, hose, and brass connector are pre-assembled, you may disregard this step.)



2. Turn all knobs to OFF. Turn off LP gas supply and remove the LP cylinder from the grill cart. Remove the brass adapter of the LP regulator from the manifold with a wrench.



3. Install the NG regulator hose to the manifold and secure using a wrench. Tighten the NG regulator on the side panel with two 5/32*10mm screws that pre-assemble on the NG regulator.



Main Burner Conversion

Tools required:



Phillips Head Screwdriver (+)



6mm Nut Driver

Steps:

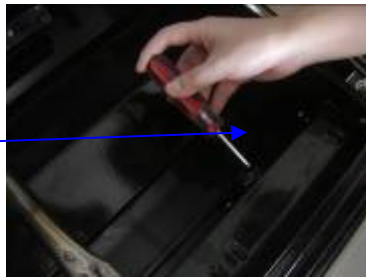
1. Remove the rotisserie kit, warming rack, cooking grids, flame tamers, tube burners and question mark burner from the two fireboxes.



2. Locate the orifice at the end of valve and remove by with adjustable Nut Driver.

The NG orifice is preassembled on the valve, behind the LP orifice.

Remove LP orifice for each of the main burners (total 3 tube burners + 1 question mark burner in small chamber).



3. Replace the tube burners and question mark burner and screw back into original position.



Searing Side Burner Conversion

Tools required:



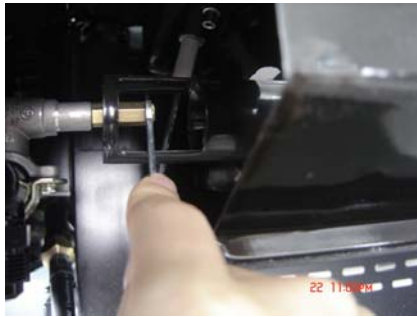
Phillips Head Screwdriver (+)



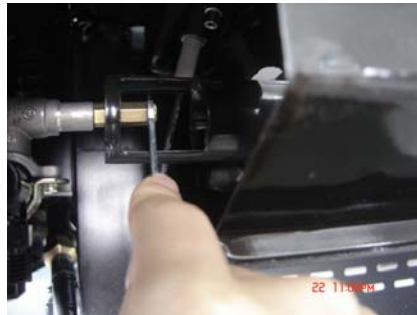
6mm Wrench

The step-by-step instruction for converting the searing side burner's orifice are stated below.

1. Remove the screw under C bracket to take off the C bracket, then remove the searing side burner LP orifice with 6mm wrench.



2. Replace the NG orifice to the connector, then replace the C bracket to the original position.



Natural Gas Conversion for Item# /Model# 720-0584

Rear Burner standing pilot Conversion

Tools required:



Phillips Head Screwdriver (+)



6mm nut driver

Standing pilot orifice steps

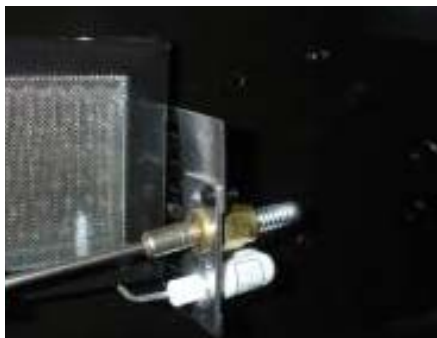
1. The standing pilot cover are secured by 3 screws and nuts. Remove the standing pilot cover located next to the burner.



2. The orifice is located behind the standing pilot tip. Remove the pilot tip by unscrewing the two screws securing the pilot tip to the bracket.



3. Unscrew the LP orifice from the standing pilot with a 6mm nut driver.
Install the Rear Burner NG orifice.
Replace the pilot tip and pilot cover to its original location.



Natural Gas Conversion for Item# /Model# 720-0584A

Rear Burner Conversion

Tools required:



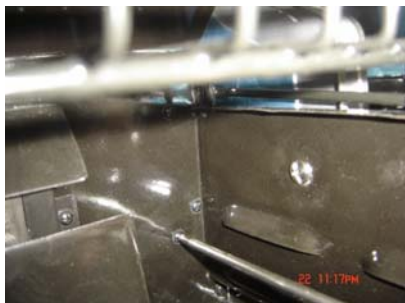
Phillips Head Screwdriver (+)



6mm Wrench

Steps:

1. Remove the screws securing the rear baffle from inside the firebox. Remove the Rear Baffle from the back of the grill.



2. Remove the LP orifice with 6mm wrench.



3. Replace the NG orifice with 6mm wrench. Then put rear baffle and screw back into original position.



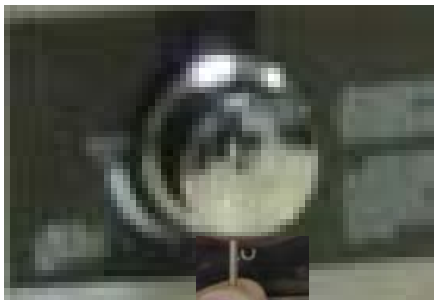
Natural Gas Conversion for Item# /Model# 720-0584A

For Main Tube Burner and Main Question Mark Burner Conversion Only

(The 3 steps below are not necessary for
the Searing Side Burner and Rotisserie Burner)

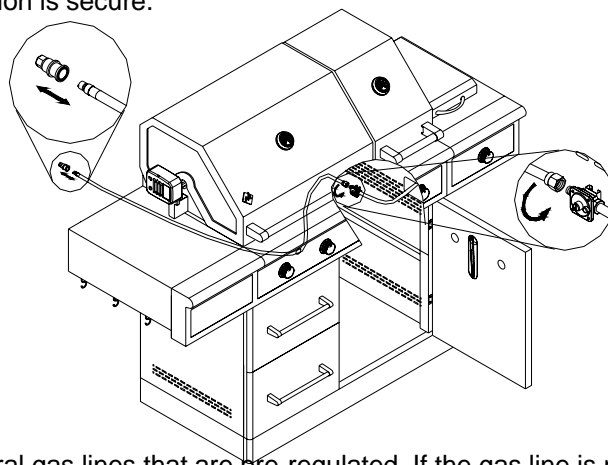
You will need to adjust the High Flame setting screw when converting the barbecue from Propane to Natural Gas.
Please follow the steps as detailed below.

1. Remove each Control Knob of main tube burners and question mark burner by loosening the socket head grub screw with the Allen Key.
2. Use a screwdriver to turn the High Flame Set Screw counterclockwise approximately 90 degree
3. Check that burner operates at the new high fire setting - it may be necessary to adjust the screw setting slightly to get the ideal burner flame height.



Warning!! Gas Valves are preset at the factory to operate on LP gas or NG gas. If you wish to convert, be sure to consult your gas supplier or trained technician for the conversion.

- A. After the Natural Gas regulator has been installed, attach the PVC Gas hose to the regulator (See drawing below).
- B. Connect the other end of the PVC Gas Hose to the house gas line using the quick-connect fitting. To use the quick connect fitting, lift the head of the connector back. Insert the end of the PVC hose and release the head of the connector. Ensure connection is secure.



There is a brass adapter for natural gas lines that are pre-regulated. If the gas line is not pre-regulated, remove the brass adapter and connect the regulator directly to the PVC gas hose.



Once conversion is complete, please attach the NG CSA certification sticker to the grill.
If you should have any questions regarding natural gas conversion, please contact customer service at 1-800-790-1299.

⚠ WARNING! FAILURE TO HEED THESE WARNINGS COULD RESULT IN A FIRE OR EXPLOSION THAT COULD CAUSE SERIOUS BODILY INJURY, DEATH OR PROPERTY DAMAGE.




Installation of this Natural Gas Conversion kit must be performed by a **QUALIFIED GAS TECHNICIAN ONLY**. DO NOT ATTEMPT TO INSTALL THIS KIT YOURSELF. Improper installation could result in a gas leak which could cause a fire or explosion and cause serious bodily injury, death or property damage. Leaks due to improper installation could occur immediately or slowly over time. If you hear any unusual noises or leaks, smell gas or unusual odors, or notice anything unusual with the operation of your gas appliance after the installation, immediately shut off the gas supply and discontinue use until the appliance is repaired by a **QUALIFIED GAS TECHNICIAN**.

If there are damaged or missing parts when you unpack this kit, call 1-800-790-1299. DO NOT have your **QUALIFIED GAS TECHNICIAN** attempt to install this kit until you receive replacement for any damaged or missing parts.

Orifice Chart

The different burner valves in this grill have different BTU ratings. This means that the amount of gas coming from each orifice varies in order to create the BTU's. The holes in the orifices themselves are drilled to different sizes so as to allow the proper amount of gas to flow through them. Please note the chart below to give an easy reference for the various orifice opening sizes for the different valves in the grill.

720/730-0586A

		Liquid Propane (LP)		Natural Gas (NG)	
		Orifice Size	BTU	Orifice Size	BTU
	Main Burner	1.07mm	13,000	1.84mm	13,000
	Searing Main Burner	1.32mm	21,000	2.35mm	21,000
	Rear Burner	1.07mm	13,000	1.84mm	13,000

Below tools are included in package:



Allen Key



6mm Wrench



6mm Nut Driver

Warning: Make sure all grill components are completely cool and gas supply is turned off and removed from grill prior to performing the conversion.

NG Hose and Regulator Conversion

Tools required:

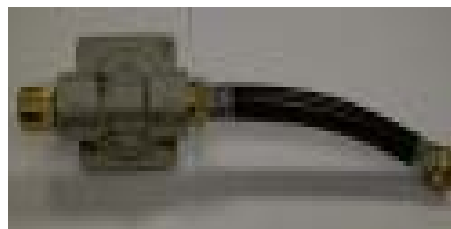
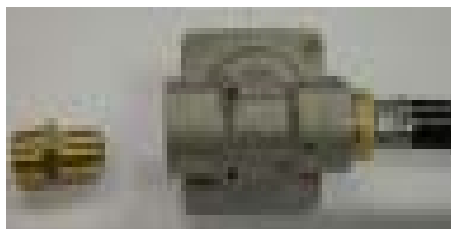


Phillips Head Screwdriver (+)



14mm wrench

1: Install the regulator hose (short hose) to the end of the regulator marked "OUT". Install the brass connector to the other end of the regulator marked "IN". (If regulator, hose, and brass connector are pre-assembled, you may disregard this step.)



2. Turn all knobs to OFF. Turn off LP gas supply and remove the LP cylinder from the grill cart. Remove the brass adapter of the LP regulator from the manifold with a wrench.



3. Install the NG regulator hose to the manifold and secure using a wrench. Tighten the NG regulator on the side panel with two 5/32*10mm screws that pre-assemble on the NG regulator.



Main Tube Burner Conversion

Tools required:



Phillips Head Screwdriver (+)



6mm Nut Driver

Steps

- 1 Remove the rotisserie kit, warming rack, cooking-grids & flame tamers.
- 2 Remove the main burners from the firebox by loosening the screws securing the burners near the back wall of the firebox. Lift the burners up and out.



3. Locate the orifice at the end of valve and remove by with adjustable Nut Driver.

The NG orifice is preassembled on the valve, behind the LP orifice.

Remove LP orifice for each of the main burners (total 4 question mark burnes).



4. Replace the question mark burners and screw back into original position.



Sear Main Burner Conversion

Tools required:



Phillips Head Screwdriver (+)



6mm Nut Driver

Step:

1. Unscrew and remove the bracket and counter pin located near the front wall of the firebox. Carefully remove the searing burner.



2. Locate the LP orifice (inside front wall of firebox) & use long nut driver to remove the orifice. Install the NG orifice and screw into place.



3. Replace & secure burners. Fasten cotter pin and screw bracket back into place.



Rear Burner Conversion

Tools required:



Phillips Head Screwdriver (+)



6mm Wrench

Steps:

1. Remove the screws securing the rear baffle from inside the firebox. Remove the Rear Baffle from the back of the grill.



2. Remove the LP orifice with 6mm wrench.



3. Replace the NG orifice with 6mm wrench. Then put rear baffle and screw back into original position.



For Main Burner Conversion Only

(The 3 steps below are not necessary for the
Sear Burner and Rotisserie Burner)

You will need to adjust the High Flame setting screw when converting the barbecue from Propane to Natural Gas.

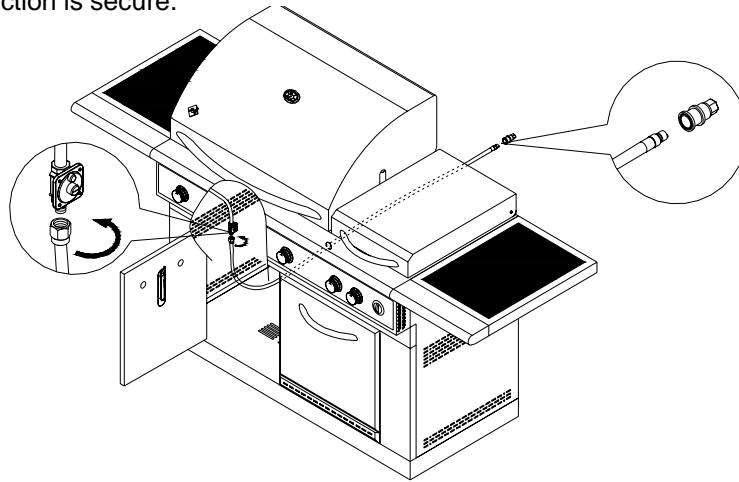
Please follow the steps as detailed below.

1. Remove each Control Knob of main tube burners and side burner by loosening the socket head grub screw with the Allen Key.
2. Use a screwdriver to turn the High Flame Set Screw counterclockwise approximately 90 degree
3. Check that burner operates at the new high fire setting - it may be necessary to adjust the screw setting slightly to get the ideal burner flame height.



Warning!! Gas Valves are preset at the factory to operate on LP gas or NG gas. If you wish to convert, be sure to consult your gas supplier or trained technician for the conversion.

- A. After the Natural Gas regulator has been installed, attach the PVC Gas hose to the regulator (See drawing below).
- B. Connect the other end of the PVC Gas Hose to the house gas line using the quick-connect fitting. To use the quick connect fitting, lift the head of the connector back. Insert the end of the PVC hose and release the head of the connector. Ensure connection is secure.



There is a brass adapter for natural gas lines that are pre-regulated. If the gas line is not pre-regulated, remove the brass adapter and connect the regulator directly to the PVC gas hose.



Once conversion is complete, please attach the NG CSA certification sticker to the grill.

If you should have any questions regarding natural gas conversion, please contact customer service at 1-800-790-1299.