

# Preferred Availability Program



Our comprehensive range of Preferred Allen-Bradley® Control Platforms, Automation Components and Motor Control Products are now immediately available to fulfill customers' needs!

We understand that time is of the essence to your business. The Preferred Availability Program ensures efficient, reliable and immediate availability of our most commonly ordered products. This helps you to speed up your project schedule and minimise downtime.

**Immediate  
Availability**

Select the preferred availability products to meet your needs.



## Product Selection Toolbox

The Product Selection Toolbox™ is a collection of Product Selection and System Design software tools that help you select Allen-Bradley products and design application solutions using those products.

Download and install the Product Selection Toolbox <http://raiseinstall.rockwellautomation.com/pst-lite.html>. In the 'Proposal Works' and 'Integrated Architecture Builder' software tools, preferred availability products are indicated as 'Preferred Availability'.

This program includes the most commonly ordered products within these product categories:

## Programmable Controllers



- ▶ 1756 ControlLogix® Controllers
- ▶ 1769 CompactLogix™ Controllers
- ▶ 5069 CompactLogix™ Controllers

## Network Security & Infrastructure

### EtherNet/IP™

- ▶ Stratix™ Switches



## Motion Control



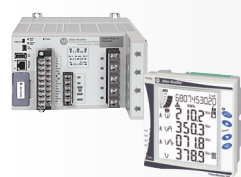
- ▶ Kinetix® 5500 & 5700 Drives

## Input/Output (I/O) Modules



- ▶ 1734 POINT I/O™
- ▶ 1756 ControlLogix I/O
- ▶ 1769 Compact I/O™
- ▶ 1794 Flex™ I/O
- ▶ 5069 Compact I/O™

## Energy Monitoring



- ▶ 1426-M5E PowerMonitor™ 5000
- ▶ 1426-V2-ENT PowerMonitor 500

## Connections Devices



- ▶ Network Media
- ▶ 1492-J Terminal Blocks

## Load Protection



- ▶ 140M-C2E and 140M-D8E Low Voltage Motor Protectors
- ▶ 1492-SPM and 1489-M1 Supplementary Motor Protectors

## Human Machine Interface



- ▶ 2711 PanelView™ Plus 7 Terminals

LISTEN.  
THINK.  
SOLVE.®

## Power Supplies



- ▶ 1606 XLE, XLP and XLS Switched Mode Power Supplies

## Motor Control



- ▶ 100C Low Voltage Contactors
- ▶ SMC™ Flex and SMC-3 Low Voltage Soft Starters

## Low Voltage Drives



- ▶ PowerFlex® 753 drives up to 250kW in IP00/20/54
- ▶ PowerFlex® 755 drives 250-450kW in IP20/54
- ▶ PowerFlex® 520 series drives up to 22kW in IP20
- ▶ PowerFlex drive accessories including keypads, comms I/O and feedback options

## Safety Products



- ▶ Micro 400, Safe 4 Safety Light Curtains
- ▶ CR30, MSR127, GSR Safety Relays
- ▶ Non-Contact, Interlock, GuardLock, Lifeline™ 4 Safety Switches

## Sensing



- ▶ Photoelectric
- ▶ Inductive
- ▶ Capacitive
- ▶ Limit Switch
- ▶ Ultrasonic

## Control & Signalling



- ▶ 800F (22.5mm), 800T/H (30mm) Pushbuttons, Rotary Switches & Indicators
- ▶ 855 Signalling Devices & Tower Lights

For other range of Allen-Bradley products not stipulated in this flyer and for more information on this program, please contact your respective Authorised Distributors.

### REXEL INDUSTRIAL AUTOMATION

Rexel Industrial Automation - Smithfield  
Head Office  
Suite 46/317-321 Woodpark Road  
Sydney, New South Wales 2164  
Australia  
Main Telephone Number: 02 9612 1200  
Fax: 02 9612 1250  
www.rexelautomation.com.au

#### Warabrook NSW

Main Telephone Number: 02 4968 2888  
Fax: 02 4968 1575

#### Wollongong NSW

Main Telephone Number: 61 02 4267 6000  
Fax: 61 02 4267 6050

#### Brisbane QLD

Main Telephone Number: 07 3841 1586  
Fax: 07 3841 1676

### NHP ELECTRICAL ENGINEERING PRODUCTS

NHP Electrical Engineering Products Pty Ltd -  
Melbourne Headquarters  
43-67 River Street  
Richmond, Victoria 3121  
Australia  
Main Telephone Number: 03 09 429 2999  
Fax Number: 03 09 429 1075  
www.nhp.com.au

#### Albury NSW

Main Telephone Number: 02 6049 0600  
Fax: 02 6025 0592

#### Rockhampton QLD

Main Telephone Number: 07 4927 2277  
Fax Number: 07 4922 2947

#### Perth WA

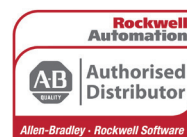
Main Telephone Number: 08 9277 1777  
Fax Number: 08 9277 1700

#### Adelaide SA

Main Telephone Number: 08 8297 9055  
Fax Number: 08 8371 0962

#### Darwin NT

Main Telephone Number: 08 8947 2666  
Fax: 08 8947 2049



Allen-Bradley, Compact I/O, CompactLogix, ControlLogix, Flex, Kinetix, Lifeline, LISTEN. THINK. SOLVE., PanelView, POINT I/O, PowerFlex, PowerMonitor, Production Selection Toolbox, Rockwell Software, SMC and Stratix are trademarks of Rockwell Automation, Inc.  
Trademarks not belonging to Rockwell Automation are property of their respective companies. EtherNet/IP is a trademark of the ODVA.

**www.rockwellautomation.com**

### Power, Control and Information Solutions Headquarters

Americas: Rockwell Automation, 1201 South Second Street, Milwaukee, WI 53204-2496 USA, Tel: (1) 414.382.2000, Fax: (1) 414.382.4444  
Europe/Middle East/Africa: Rockwell Automation NV, Pegasus Park, De Kleetlaan 12a, 1831 Diegem, Belgium, Tel: (32) 2 663 0600, Fax: (32) 2 663 0640  
Asia Pacific: Rockwell Automation, Level 14, Core F, Cyberport 3, 100 Cyberport Road, Hong Kong, Tel: (852) 2887 4788 Fax: (852) 2508 1846