

Excel 2013 Installation Instructions for ICP-MS MassHunter

Contents

1	Microsoft Excel 2013	2
2	Creating the Microsoft Account.....	2
3	Installing Excel 2013 - Unzip Files and Run setup.exe	4
4	Activate Excel 2013 (for a system without internet access)	8
5	Configure Excel 2013 for ICP-MS MassHunter Add-in	10
6	Installing Excel Add-in for LabQC.....	11

Excel 2013 Installation Instructions for ICP-MS MassHunter

1 Microsoft Excel 2013

1.1 The Excel 2013 package contains the following:

1.1.1 A green paper card showing a unique “product key”, aka **GREEN KEY**

1.1.2 A paper card containing instruction of how to download and activate

[Note] No installation media is included. The setup.exe is placed on the D drive of Agilent bundled PC with Excel.

2 Creating the Microsoft Account

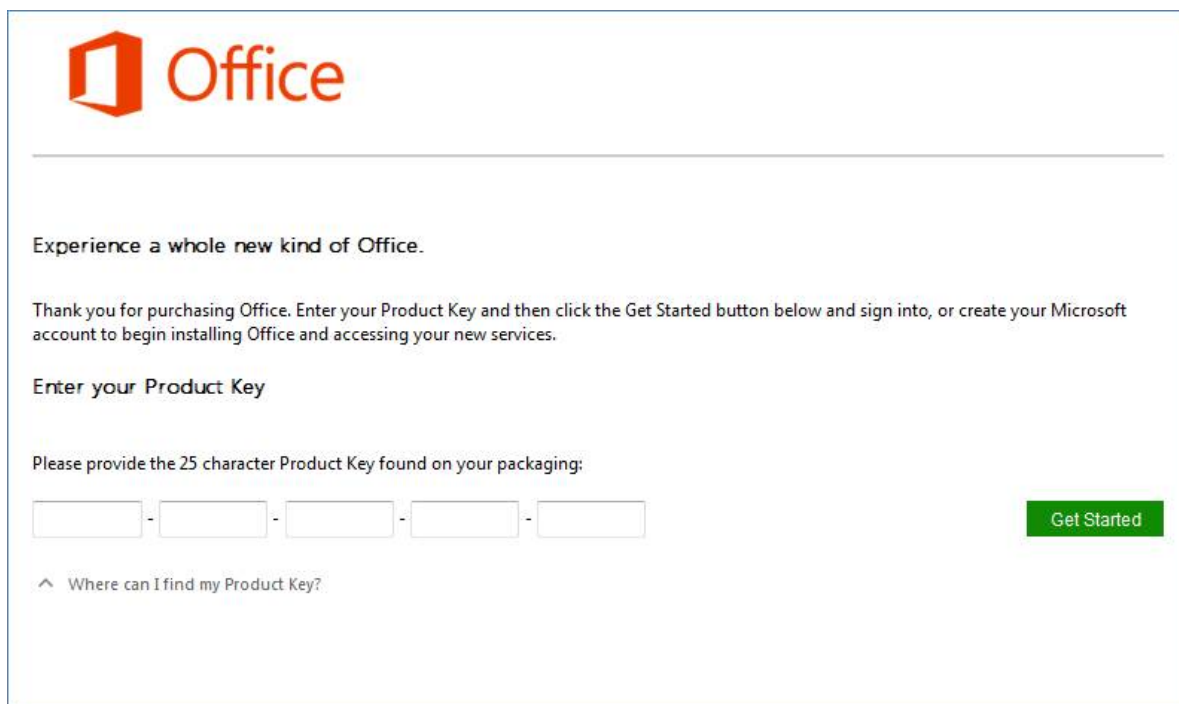
There are two types of product key. One is the **GREEN KEY** which comes with the Excel 2013 package. The other one is the **SECONDARY KEY** to activate Excel 2013. To obtain the **SECONDARY KEY**, the customer will need to create a Microsoft Account.

2.1 Requirements

2.1.1 Any PC with internet access.

2.1.2 The **GREEN KEY** which comes with the Excel 2013 package.

2.2 The customer goes to the Microsoft Office Website (www.office.com/setup).



2.3 Enter the **GREEN KEY** to the product key.

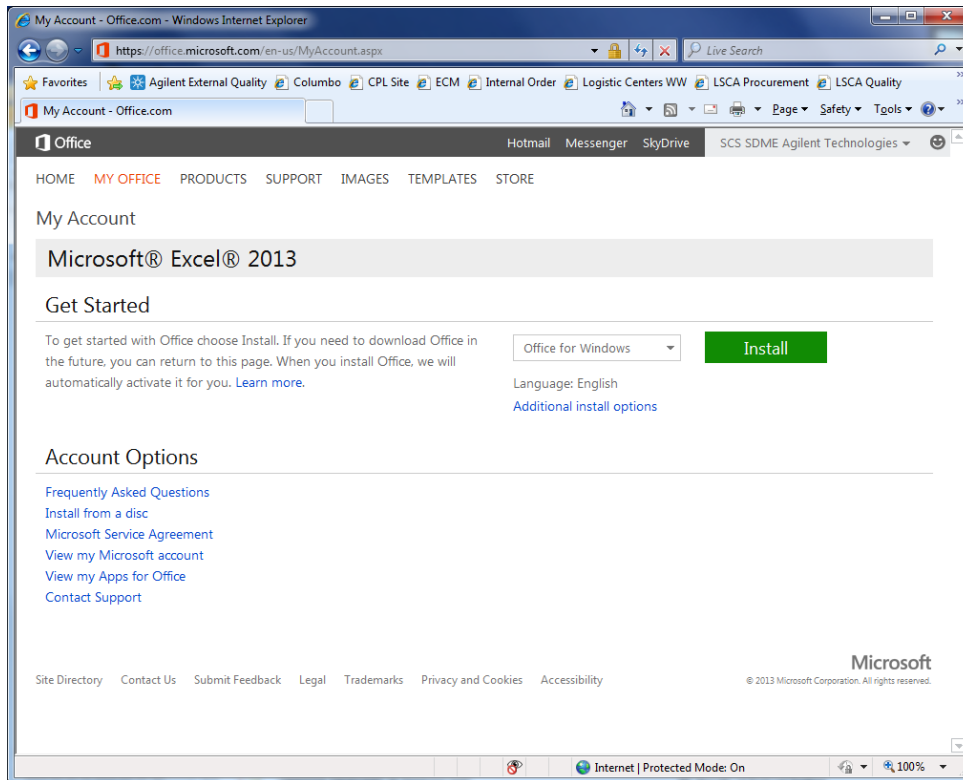
2.4 When creating the Microsoft Account, the following information is required.

2.4.1 Country, Language, First Name, Last Name, Birthdate, phone number, e-mail address, and password

2.5 An e-mail is sent to confirm. Click on the link in the e-mail to finish the account creation.

Excel 2013 Installation Instructions for ICP-MS MassHunter

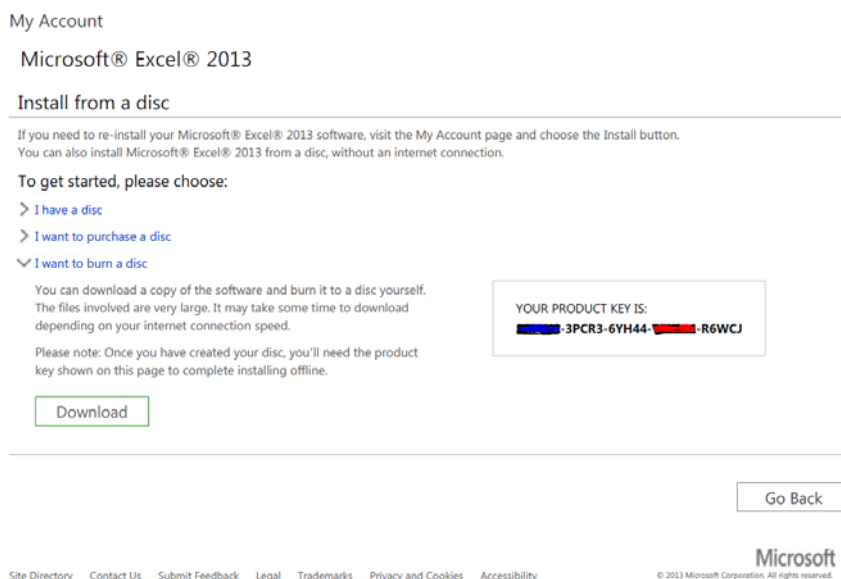
2.6 Click "Install".



2.7 Click [Install from a disk] > [I want to burn a disk (size of 2.04 GB)].

2.8 In the additional install options, then you can choose either 32-bit or 64-bit. MassHunter for ICP-MS requires Excel 2013 (32-bit), even though the OS is Windows 7 (64-bit).

2.9 Once "burn a disk" is selected, Microsoft provides the **SECONDARY KEY** (the other product key). Record it for the activation step later.

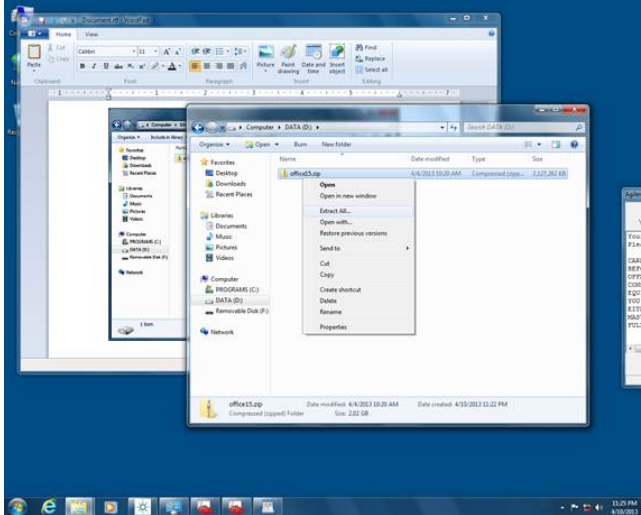


[Note] You will have a **5 day** window in which to activate Excel 2013.

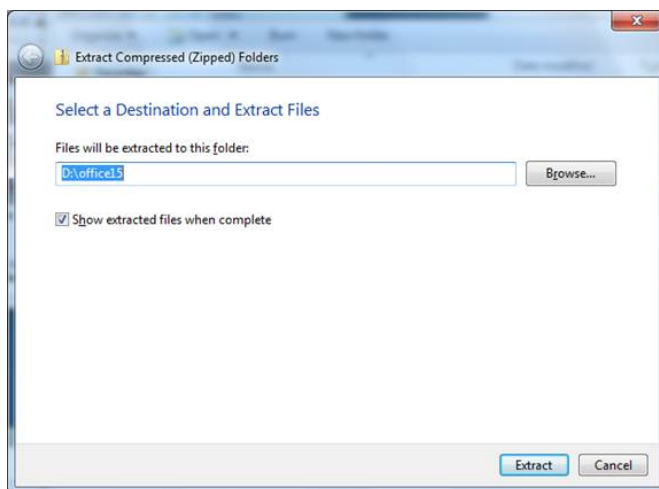
Excel 2013 Installation Instructions for ICP-MS MassHunter

3 Installing Excel 2013 - Unzip Files and Run setup.exe

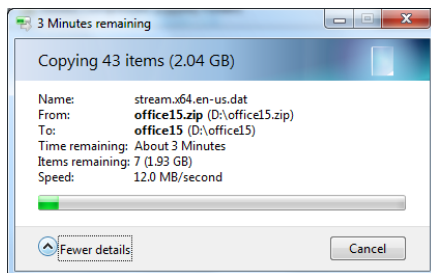
- 3.1 Go to D:\ForAgilentServiceProfessionalsOnly.
- 3.2 Right click the **office15.zip** file and click [Extract All...].



- 3.3 Enter D:\office15 in "Files will be extracted to this folder". Click on [Extract].



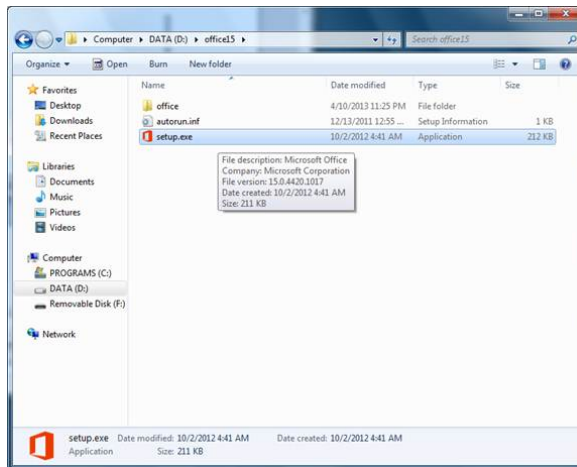
- 3.4 The extraction should take around 3 minutes.



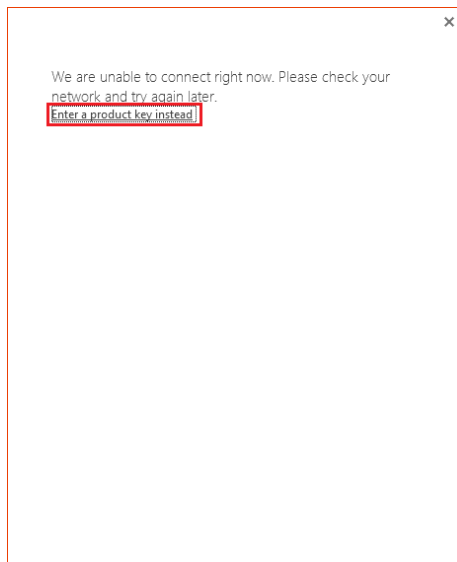


Excel 2013 Installation Instructions for ICP-MS MassHunter

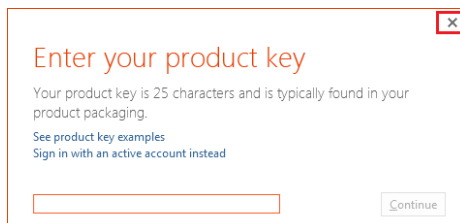
3.5 When extraction is complete, double click on **D:\office15\setup.exe**.



3.6 Click **[Enter a product key instead]**.



3.7 Click **[x]**.

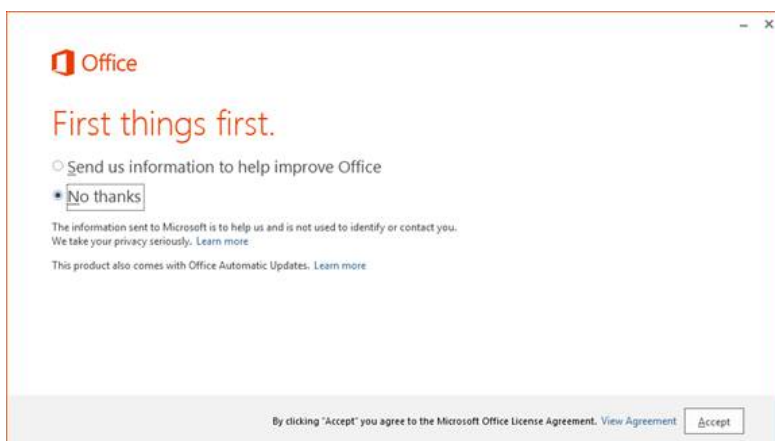


Excel 2013 Installation Instructions for ICP-MS MassHunter

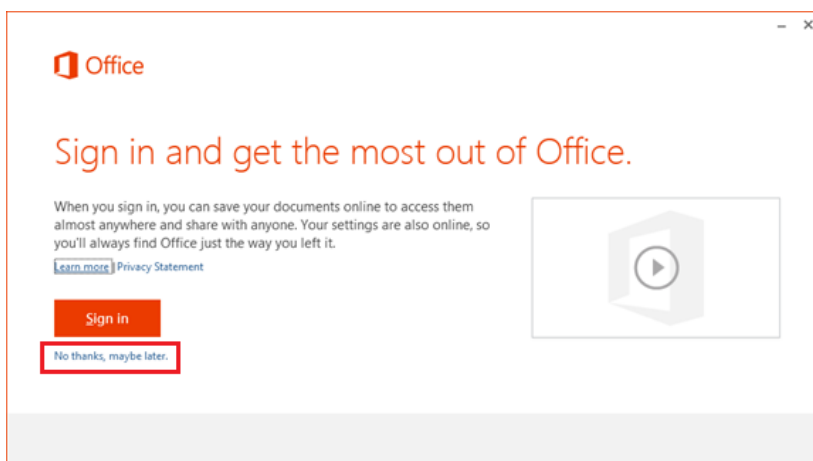
3.8 Click **[Next]**.



3.9 Click **[No thanks]**, then **[Accept]**.

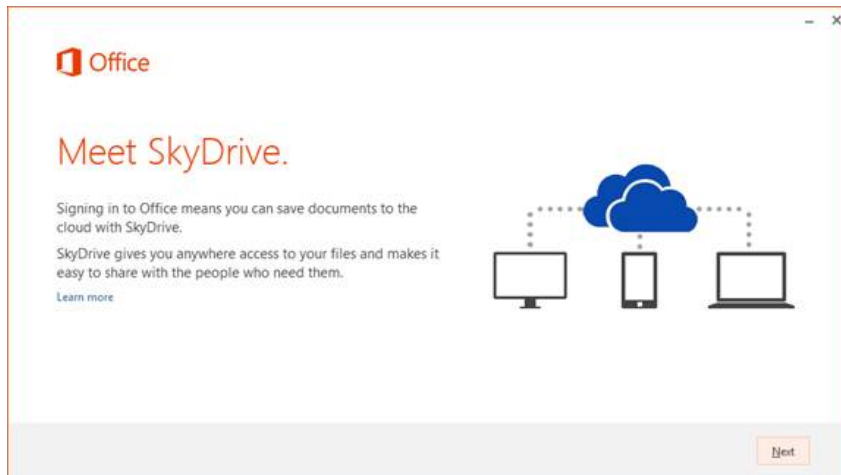


3.10 Click **[No thanks, maybe later]**.

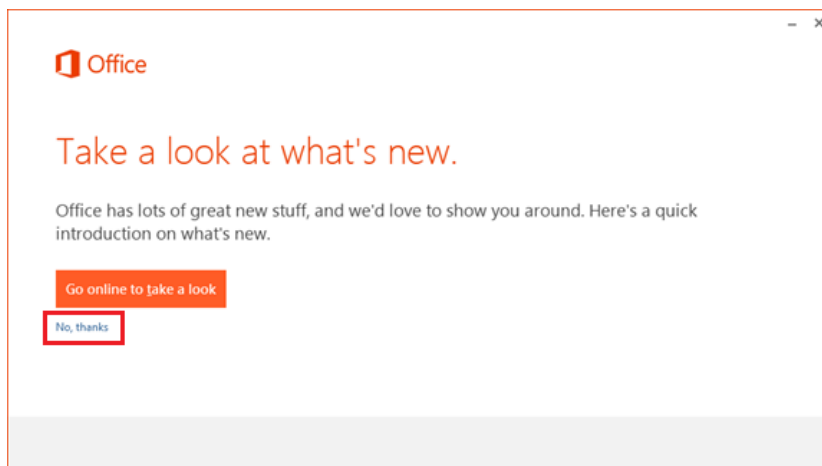


Excel 2013 Installation Instructions for ICP-MS MassHunter

3.11 Click **[Next]**.



3.12 Click **[No, thanks]**.



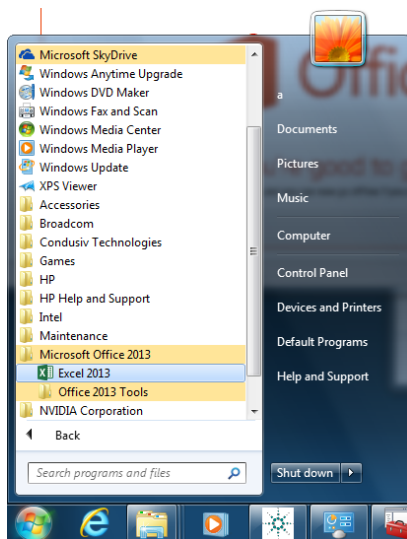
3.13 Click **[All done!]**.



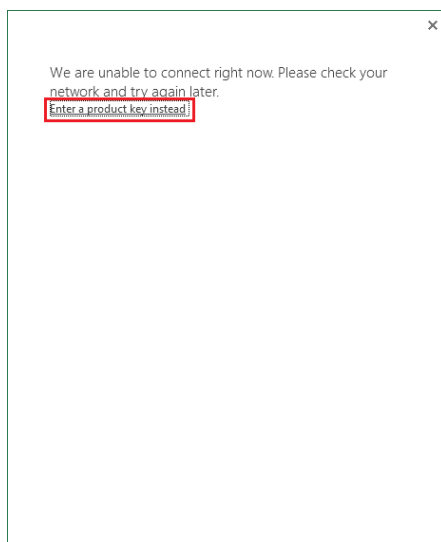
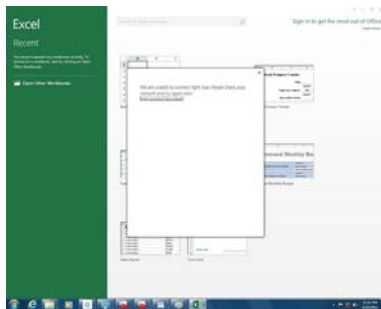
Excel 2013 Installation Instructions for ICP-MS MassHunter

4 Activate Excel 2013 (for a system without internet access)

4.1 Go to [Start] > [All Programs] > [Microsoft Office 2013] > [Excel 2013].

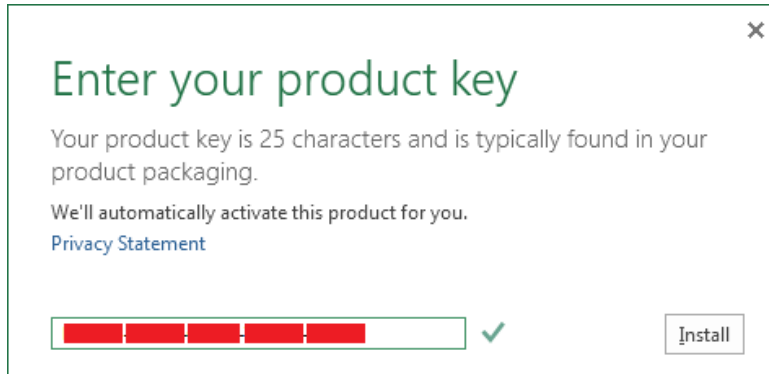


4.2 Click [Enter a product key instead].

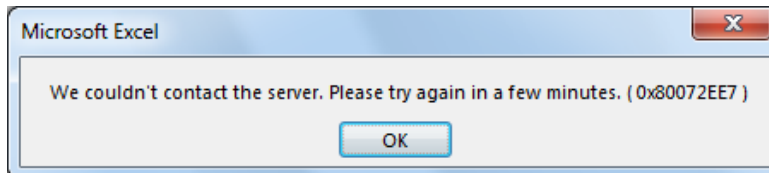


Excel 2013 Installation Instructions for ICP-MS MassHunter

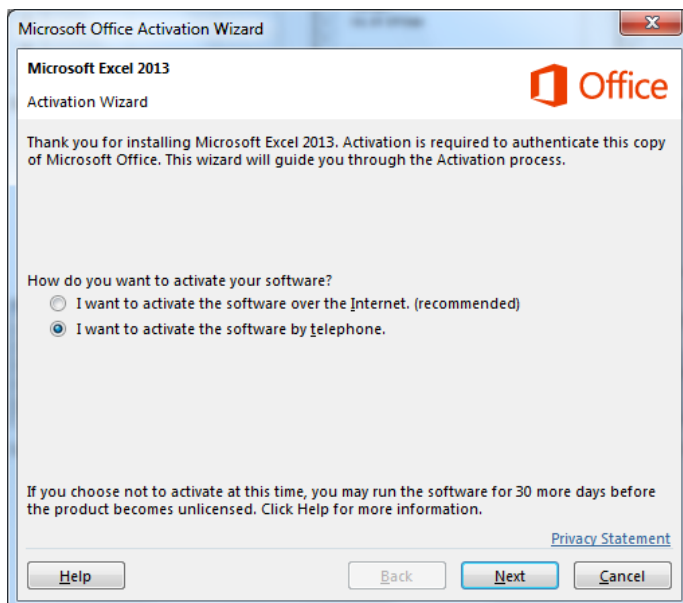
- 4.3 Enter the **SECONDARY KEY**, which is the 25 character Excel 2013 product key provided by Microsoft after the Customer creates their Microsoft account online (recorded in Step 2.9 above), and click on Install.



- 4.4 Click [OK].



- 4.5 Click [I want to activate the software by telephone], then click [Next].

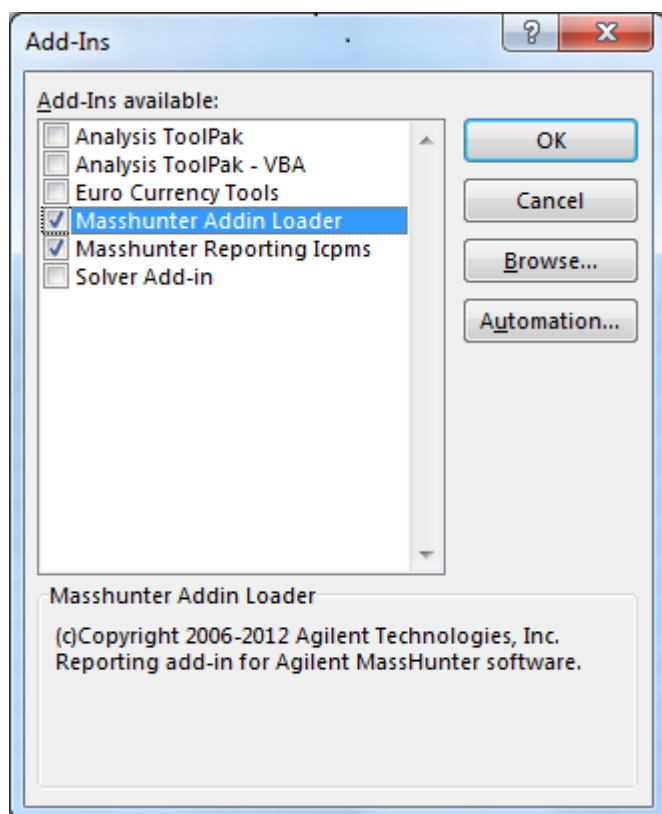


- 4.6 Follow the phone instruction to activate the Excel 2013.

Excel 2013 Installation Instructions for ICP-MS MassHunter

5 Configure Excel 2013 for ICP-MS MassHunter Add-in

- 5.1 Open Excel and select **[File] > [Options]**.
- 5.2 In the **Excel Options** dialog box, click **[Trust Center]** task, then click **[Trust Center Settings]**.
- 5.3 In the **Trust Center** dialog box, click **[Macro Settings]** and mark the **[Trust access to the VBA project object model]** check box.
- 5.4 Click **[OK]**.
- 5.5 Select **[Language]** on the **Excel Options** dialog box.
- 5.6 Please make sure the **Editing Language** (default) is English, depending on the language that is used in your MassHunter Workstation UI.
- 5.7 Click **[OK]**.
- 5.8 Click **[Add-Ins]** on the **Excel Options** dialog box.
- 5.9 Select **Excel Add-Ins** in the **Manage** list box. Click **[Go...]**. The **Add-Ins** dialog box appears.
- 5.10 Mark the **Masshunter Addin Loader** and the **Masshunter Reporting Icpms** check boxes.



- 5.11 Click **[OK]**.

6 Installing Excel Add-in for LabQC

- 6.1 On the Windows **[Start]** menu, select **[All Program] > [ICP-MS MassHunter Workstation] > [Configure] > [Install Excel Add-in for LabQC]**.
- 6.2 Follow the instructions on the screen to install the add-in.

This information is subject to change without notice

© Agilent Technologies, Inc. 2013

Published in Japan, 21-May-2013