

SIEMENS



3VA Enclosed Circuit Breaker Quick Reference

usa.siemens.com/3VA

125A TMTU Circuit Breaker Selection



125A, 3P \leq 25KAIC @ 480V				
Amperage	ED43	ED63	NGG	3VA51**4
15	ED43B015	ED63B015	NGG3B015	3VA5195-4EC31-0AA0
20	ED43B020	ED63B020	NGG3B020	3VA5120-4EC31-0AA0
25	ED43B025	ED63B025	NGG3B025	3VA5125-4EC31-0AA0
30	ED43B030	ED63B030	NGG3B030	3VA5130-4EC31-0AA0
35	ED43B035	ED63B035	NGG3B035	3VA5135-4EC31-0AA0
40	ED43B040	ED63B040	NGG3B040	3VA5140-4EC31-0AA0
45	ED43B045	ED63B045	NGG3B045	3VA5145-4EC31-0AA0
50	ED43B050	ED63B050	NGG3B050	3VA5150-4EC31-0AA0
60	ED43B060	ED63B060	NGG3B060	3VA5160-4EC31-0AA0
70	ED43B070	ED63B070	NGG3B070	3VA5170-4EC31-0AA0
80	ED43B080	ED63B080	NGG3B080	3VA5180-4EC31-0AA0
90	ED43B090	ED63B090	NGG3B090	3VA5190-4EC31-0AA0
100	ED43B100	ED63B100	NGG3B100	3VA5110-4EC31-0AA0
110	ED43B110	ED63B110	NGG3B110	3VA5111-4EC31-0AA0
125	ED43B125	ED63B125	NGG3B125	3VA5112-4EC31-0AA0

125A, 3P 35KAIC @ 480V			
Amperage	NDG	HGG	3VA51**5
15	N/A	HGG3B015	3VA5195-5EC31-0AA0
20	N/A	HGG3B020	3VA5120-5EC31-0AA0
25	N/A	HGG3B025	3VA5125-5EC31-0AA0
30	N/A	HGG3B030	3VA5130-5EC31-0AA0
35	N/A	HGG3B035	3VA5135-5EC31-0AA0
40	N/A	HGG3B040	3VA5140-5EC31-0AA0
45	N/A	HGG3B045	3VA5145-5EC31-0AA0
50	NDK3B050	HGG3B050	3VA5150-5EC31-0AA0
60	NDK3B060	HGG3B060	3VA5160-5EC31-0AA0
70	NDK3B070	HGG3B070	3VA5170-5EC31-0AA0
80	NDK3B080	HGG3B080	3VA5180-5EC31-0AA0
90	NDK3B090	HGG3B090	3VA5190-5EC31-0AA0
100	NDK3B100	HGG3B100	3VA5110-5EC31-0AA0
110	NDK3B110	HGG3B110	3VA5111-5EC31-0AA0
125	NDK3B125	HGG3B125	3VA5112-5EC31-0AA0

125A, 3P \leq 65KAIC @ 480V					
Amperage	HDG	HED4	HHED6	LGG	3VA51**6
15	N/A	HED43B015	HHED63B015	LGG3B015	3VA5195-6EC31-0AA0
20	N/A	HED43B020	HHED63B020	LGG3B020	3VA5120-6EC31-0AA0
25	N/A	HED43B025	HHED63B025	LGG3B025	3VA5125-6EC31-0AA0
30	N/A	HED43B030	HHED63B030	LGG3B030	3VA5130-6EC31-0AA0
35	N/A	HED43B035	HHED63B035	LGG3B035	3VA5135-6EC31-0AA0
40	N/A	HED43B040	HHED63B040	LGG3B040	3VA5140-6EC31-0AA0
45	N/A	HED43B045	HHED63B045	LGG3B045	3VA5145-6EC31-0AA0
50	HDK3B050	HED43B050	HHED63B050	LGG3B050	3VA5150-6EC31-0AA0
60	HDK3B060	HED43B060	N/A	LGG3B060	3VA5160-6EC31-0AA0
70	HDK3B070	HED43B070	N/A	LGG3B070	3VA5170-6EC31-0AA0
80	HDK3B080	HED43B080	N/A	LGG3B080	3VA5180-6EC31-0AA0
90	HDK3B090	HED43B090	N/A	LGG3B090	3VA5190-6EC31-0AA0
100	HDK3B100	HED43B100	N/A	LGG3B100	3VA5110-6EC31-0AA0
110	HDK3B110	HED43B110	N/A	LGG3B110	3VA5111-6EC31-0AA0
125	HDK3B125	HED43B125	N/A	LGG3B125	3VA5112-6EC31-0AA0

- 1.) Lugs are not included with 3VA circuit breakers, reference the table on next page for "standard" lug options.
- 2.) All 3VA circuit breakers are non-interchangeable trip units.
- 3.) In reference to 3VA, digits 9 and 10(-EC-) can be substituted for -ED-, this indicates non-adjustable instantaneous.
- 4.) Breakers cannot be installed in the enclosures at the factory.

250A TMTU Circuit Breaker Selection



400A TMTU Circuit Breaker Selection



250A, 3P 35KAIC @ 480V

Amperage	FD6/FXD6	NFG	3VA52**5
100	FD63B100	NFK3B100	3VA5210-5EC31-0AA0
110	FD63B110	NFK3B110	3VA5211-5EC31-0AA0
125	FD63B125	NFK3B125	3VA5212-5EC31-0AA0
150	FD63B150	NFK3B150	3VA5215-5EC31-0AA0
175	FD63B175	NFK3B175	3VA5217-5EC31-0AA0
200	FD63B200	NFK3B200	3VA5220-5EC31-0AA0
225	FD63B225	NFK3B225	3VA5222-5EC31-0AA0
250	FD63B250	NFK3B250	3VA5225-5EC31-0AA0

400A, 3P 35KAIC @ 480V

Amperage	JD6/JXD6	NJG/NJX	3VA53**5
200	JD63B200 JXD63B200	–	3VA5320-5EC31-0AA0
225	JD63B225 JXD63B225	–	3VA5322-5EC31-0AA0
250	JD63B250 JXD63B250	NJG3B250L NJX3B250L	3VA5325-5EC31-0AA0
300	JD63B300 JXD63B300	NJG3B300L NJX3B300L	3VA5330-5EC31-0AA0
350	JD63B350 JXD63B350	NJG3B350L NJX3B350L	3VA5335-5EC31-0AA0
400	JD63B400 JXD63B400	NJG3B400L NJX3B400L	3VA5340-5EC31-0AA0

250A, 3P 65KAIC @ 480V

Amperage	HFD6/HFXD6	HFG	3VA52**6
100	HFD63B100	HFK3B100	3VA5210-6EC31-0AA0
110	HFD63B110	HFK3B110	3VA5211-6EC31-0AA0
125	HFD63B125	HFK3B125	3VA5212-6EC31-0AA0
150	HFD63B150	HFK3B150	3VA5215-6EC31-0AA0
175	HFD63B175	HFK3B175	3VA5217-6EC31-0AA0
200	HFD63B200	HFK3B200	3VA5220-6EC31-0AA0
225	HFD63B225	HFK3B225	3VA5222-6EC31-0AA0
250	HFD63B250	HFK3B250	3VA5225-6EC31-0AA0

400A, 3P 65KAIC @ 480V

Amperage	HJD6/HJXD6	HJG/HJX	3VA53**6
200	HJD63B200 HJXD63B200	–	3VA5320-6EC31-0AA0
225	HJD63B225 HJXD63B225	–	3VA5322-6EC31-0AA0
250	HJD63B250 HJXD63B250	HJG3B250L HJX3B250L	3VA5325-6EC31-0AA0
300	HJD63B300 HJXD63B300	HJG3B300L HJX3B300L	3VA5330-6EC31-0AA0
350	HJD63B350 HJXD63B350	HJG3B350L HJX3B350L	3VA5335-6EC31-0AA0
400	HJD63B400 HJXD63B400	HJG3B400L HJX3B400L	3VA5340-6EC31-0AA0

250A, 3P 100KAIC @ 480V

Amperage	HHFD6/HHFXD6	LFG	3VA52**7
100	HHFD63B100	LFK3B100	3VA5210-7EC31-0AA0
110	HHFD63B110	LFK3B110	3VA5211-7EC31-0AA0
125	HHFD63B125	LFK3B125	3VA5212-7EC31-0AA0
150	HHFD63B150	LFK3B150	3VA5215-7EC31-0AA0
175	HHFD63B175	LFK3B175	3VA5217-7EC31-0AA0
200	HHFD63B200	LFK3B200	3VA5220-7EC31-0AA0
225	HHFD63B225	LFK3B225	3VA5222-7EC31-0AA0
250	HHFD63B250	LFK3B250	3VA5225-7EC31-0AA0

400A, 3P 100KAIC @ 480V

Amperage	HHJD6/HHJXD6	LJG/LJX	3VA53**7
200	HHJD63B200 HHJXD63B200	–	3VA5320-7EC31-0AA0
225	HHJD63B225 HHJXD63B225	–	3VA5322-7EC31-0AA0
250	HHJD63B250 HHJXD63B250	LJG3B250L LJX3B250L	3VA5325-7EC31-0AA0
300	HHJD63B300 HHJXD63B300	LJG3B300L LJX3B300L	3VA5330-7EC31-0AA0
350	HHJD63B350 HHJXD63B350	LJG3B350L LJX3B350L	3VA5335-7EC31-0AA0
400	HHJD63B400 HHJXD63B400	LJG3B400L LJX3B400L	3VA5340-7EC31-0AA0

600A TMTU Circuit Breaker Selection



600A, 3P 35KAIC @ 480V			
Amperage	LD6/LXD6	NLK	3VA54**5
450	LD63B450 LXD63B450	NLK3B450L NLX3B450L	3VA5445-5EC31-0AA0
500	LD63B500 LXD63B500	NLK3B500L NLX3B500L	3VA5450-5EC31-0AA0
600	LD63B600 LXD63B600	NLK3B600L NLX3B600L	3VA5460-5EC31-0AA0

600A, 3P 65KAIC @ 480V			
Amperage	HLD6/HLXD6	HLK	3VA54**6
450	HLD63B450 HLXD63B450	HLK3B450L HLX3B450L	3VA5445-6EC31-0AA0
500	HLD63B500 HLXD63B500	HLK3B500L HLX3B500L	3VA5450-6EC31-0AA0
600	HLD63B600 HLXD63B600	HLK3B600L HLX3B600L	3VA5460-6EC31-0AA0

600A, 3P 100KAIC @ 480V			
Amperage	HHL6/HHLXD6	LLX	3VA54**7
450	HHL63B450 HHLXD63B450	LLX3B450L LLX3B450L	3VA5445-7EC31-0AA0
500	HHL63B500 HHLXD63B500	LLX3B500L LLX3B500L	3VA5450-7EC31-0AA0
600	HHL63B600 HHLXD63B600	LLX3B600L LLX3B600L	3VA5460-7EC31-0AA0

800A TMTU Circuit Breaker Selection



800A, 3P 35KAIC @ 480V			
Amperage	MD6/MXD6 (50KAIC @ 480V)	NMG	3VA55**5
500	MD63B500 MXD63B500	NA	NA
600	MD63B600 MXD63B600	NMG3B600L	3VA5560-5EC32-0AA0
700	MD63B700 MXD63B700	NMG3B700L	3VA5570-5EC32-0AA0
800	MD63B800 MXD63B800	NMG3B800L	3VA5580-5EC32-0AA0

800A, 3P 65KAIC @ 480V			
Amperage	HMD6/HMXD6	HMG	3VA55**6
500	HMD63B500 HXMD63B500	NA	NA
600	HMD63B600 HXMD63B600	HMG3B600L	3VA5560-6EC32-0AA0
700	HMD63B700 HXMD63B700	HMG3B700L	3VA5570-6EC32-0AA0
800	HMD63B800 HXMD63B800	HMG3B800L	3VA5580-6EC32-0AA0

800A, 3P 100KAIC @ 480V			
Amperage	CMD6	LMG	3VA**7
500	NA	NA	NA
600	CMD63B600	LMG3B600L	3VA5560-7EC32-0AA0
700	CMD63B700	LMG3B700L	3VA5570-7EC32-0AA0
800	CMD63B800	LMG3B800L	3VA5580-7EC32-0AA0

Note: All 3VA 800A breakers come with nut keepers installed.

1000A TMTU Circuit Breaker Selection



1000A, 3P 35KAIC @ 480V			
Amperage	ND6/NXD6 (50KAIC @ 480V)	NNG	3VA66**5 (Electronic Trip)
1000	ND63B100 NXD63B100	NNG3B100L	3VA6610-5HL32-0AA0

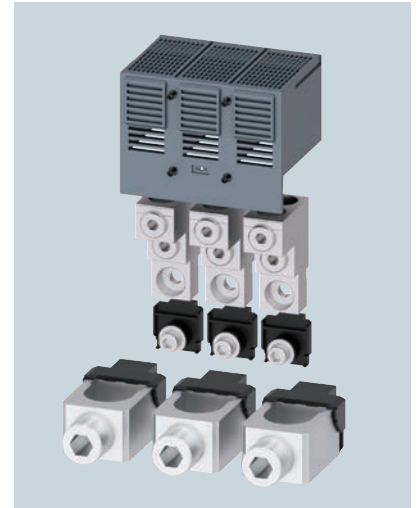
1000A, 3P 65KAIC @ 480V			
Amperage	HND6/HNXD6	HNG	3VA66**6 (Electronic Trip)
1000	HND63B100 HNXD63B100	HNG3B100L	3VA6610-6HL32-0AA0

1000A, 3P 100KAIC @ 480V			
Amperage	CND6	LNG	3VA66**7 (Electronic Trip)
1000	CND63B100	LNG3B100L	3VA6610-7HL32-0AA0

Lug Selection

	3VA "Standard" lugs	Description	Cables Per Phase
125A TMTU	3VA91330JB11	3-POLE #14-3/0	1
250A TMTU	3VA92330JB12	3-POLE #6-350KCMIL	1
150A ETU	3VA91430JB11	3-POLE #14-1/0	1
250A ETU	3VA92430JB12	3-POLE #6-350KCMIL	1
400/600A TMTU/ETU	3VA9473-0JJ23	3-POLE 2/0 - 600KCMIL	2
600/700A TMTU	3VA9573-0JB23	3-POLE 4/0 - 600KCMIL	2
800/1000A TMTU/ETU	3VA9673-0JJ43	3-POLE 4/0 - 500KCMIL	4

Note: For additional Lugs options reference section 7 of the online SpeedFax.



Internal Accessory Selection

Description	Catalog No.
Shunt Trip Flex 120V	3VA99780BA22
Shunt Trip Left 120V	3VA99780BL32
HQ Aux 1 Slot	3VA99780AA12
UVR 120V	3VA99780BB24

Note: For additional accessory options, reference section 4 of the 3VA UL Catalog.

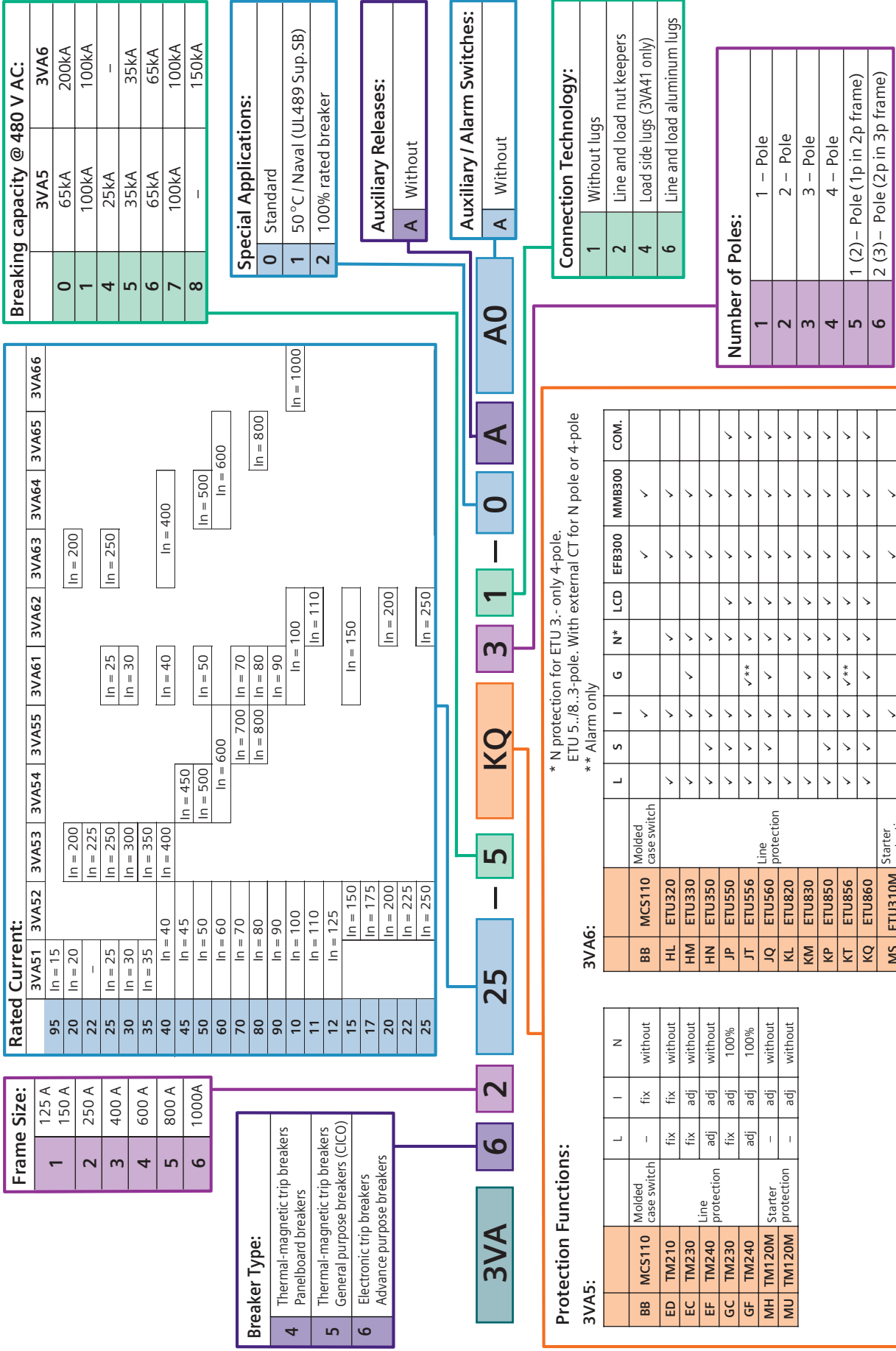


Enclosure Selection

NEMA Type Enclosure	125A Catalog No.	150A/250A Catalog No.	400/600A Catalog No.	800/1000A Catalog No.
3VA NEMA 1 Surface	3VAE125N1S	3VAE250N1S	3VAE6001S	3VAE8001S
3VA NEMA 1 Flush	3VAE125N1F	3VAE250N1F	3VAE6001F	3VAE8001F
3VA NEMA 3R	3VAE125N3R	3VAE250N3R	3VAE6003R	3VAE8003R
3VA NEMA 12	3VAE125N12	3VAE250N12	3VAE60012	3VAE80012
3VA NEMA 4X	3VAE125N4X	3VAE250N4X	3VAE6004X	3VAE8004X
3VA NEMA 4X 316 Stainless	3VAE125N4X316	3VAE250N4X316	3VAE6004X316	3VAE8004X316



3VA – UL molded case circuit breaker MLFB structure



Rated Current:

	3VA51	3VA52	3VA53	3VA54	3VA55	3VA61	3VA62	3VA63	3VA64	3VA65	3VA66
95	In = 15										
20	In = 20										
22	-										
25	In = 25					In = 25					
30	In = 30					In = 30					
35	In = 35					In = 35					
40	In = 40					In = 40					
45	In = 45					In = 45					
50	In = 50					In = 50					
60	In = 60					In = 60					
70	In = 70					In = 70					
80	In = 80					In = 80					
90	In = 90					In = 90					
10	In = 100					In = 100					
11	In = 110					In = 110					
12	In = 125					In = 125					
15	In = 150					In = 150					
17	In = 175					In = 175					
20	In = 200					In = 200					
22	In = 225					In = 225					
25	In = 250					In = 250					

Frame Size:

1	125 A
2	150 A
3	250 A
4	400 A
5	600 A
6	1000A

Breaker Type:

4	Thermal-magnetic trip breakers Panelboard breakers
5	Thermal-magnetic trip breakers General purpose breakers (CICO)
6	Electronic trip breakers Advance purpose breakers

Special Applications:

0	Standard
1	50 °C / Naval (UL489 Sup.SB)
2	100% rated breaker

Auxiliary Releases:

A	Without
---	---------

Auxiliary / Alarm Switches:

A	Without
---	---------

Protection Functions:

3VA5:		L	I	N
BB	MCS110	Molded case switch	fix	without
ED	TM210		fix	without
EC	TM230		adj	without
EF	TM240		fix	without
GC	TM230	Line protection	fix	100%
GF	TM240		adj	100%
MH	TM120M	Starter protection	adj	without
MU	TM120M		adj	without

* N protection for ETU 3.- only 4-pole.
ETU 5.,/8...3-pole. With external CT for N pole or 4-pole

** Alarm only

3VA6:

	L	S	I	G	N*	LCD	EFB300	MMB300	COM.
BB	MCS110		✓				✓	✓	
HL	ETU320	Molded case switch	✓		✓		✓	✓	
HM	ETU330		✓	✓	✓		✓	✓	
HN	ETU350		✓	✓	✓		✓	✓	
JP	ETU550		✓	✓	✓	✓	✓	✓	✓
JT	ETU556		✓	✓	✓	✓	✓	✓	✓
JQ	ETU560	Line protection	✓	✓	✓	✓	✓	✓	✓
KL	ETU820		✓	✓	✓	✓	✓	✓	✓
KM	ETU830		✓	✓	✓	✓	✓	✓	✓
KP	ETU850		✓	✓	✓	✓	✓	✓	✓
KT	ETU856		✓	✓	✓	✓	✓	✓	✓
KQ	ETU860		✓	✓	✓	✓	✓	✓	✓
MS	ETU310M	Starter protection	✓				✓	✓	

3VA5:

Connection Technology:

1	Without lugs
2	Line and load nut keepers
4	Load side lugs (3VA41 only)
6	Line and load aluminum lugs

Number of Poles:

1	1 – Pole
2	2 – Pole
3	3 – Pole
4	4 – Pole
5	1 (2)– Pole (1p in 2p frame)
6	2 (3)– Pole (2p in 3p frame)

**Published by
Siemens 2021**

Siemens Industry, Inc.
3617 Parkway Ln
Peachtree Corners, GA 30092

Siemens Technical Support: 1-800-333-7421
info.us@siemens.com

Printed in USA
Order No. CBFL-3ENCQ-0521
All Rights Reserved
© 2021, Siemens Industry, Inc.
usa.siemens.com/3VA

The technical data presented in this document is based on an actual case or on as-designed parameters, and therefore should not be relied upon for any specific application and does not constitute a performance guarantee for any projects. Actual results are dependent on variable conditions. Accordingly, Siemens does not make representations, warranties, or assurances as to the accuracy, currency or completeness of the content contained herein. If requested, we will provide specific technical data or specifications with respect to any customer's particular applications. Our company is constantly involved in engineering and development. For that reason, we reserve the right to modify, at any time, the technology and product specifications contained herein.