

WorldCard Team - Windows Server Edition

Administrator Manual

Versio: v1.2

Relesae: March, 2018

User Rights License Agreement

This is a License Agreement (“Agreement”) which is a legal agreement between you the user and PENPOWER TECHNOLOGY LTD.(“PenPower”) for your use of the (“Product”). If any term of this Agreement is not accepted by you, then no use of the Product shall be made nor should the Product software be installed or copied. When using the Product, such use shall be deemed to constitute full and knowing acceptance of the all the terms and conditions of this Agreement of License.

1. Intellectual Property Rights

The Product includes hardware devices, software, delivered and packaging included data and documentation related intellectual property rights in their entirety (including but not limited to copyrights) which belong to PenPower, and which are also further protected by law.

2. License of the Right to Use

You are solely authorized to use one single server and the number of the Product purchased for end users, and may not use the Product outside of the said server.

3. Copying limits

The Product software and appurtenant documentation are products of the PenPower, and their copyrights belong solely to PenPower. PenPower solely authorizes you to copy the Product software for back-up purposes only in one copy for storage, and any other act of copying is strictly forbidden.

The Product may not be sold, rented, dismantled, reverse engineered, copied, translated, modified, derivative work created, or by any other means obtains the source code, and the Product may not be used for any purpose outside the scope of the provisions of this Agreement

4. Additional Authorization of Use

In the event that the Product software is required by use by additional users, please contact PenPower or its local agent to purchase additional authorization of use.

5. Compensation Liability

You agree to be liable to PenPower for any breach of the terms and conditions of this Agreement resulting in any loss, overhead expenses, debts, ex gratia settlement amounts or expenses (including but not limited to legal expenses), and warrants and guarantees to compensate PenPower for any such aforementioned costs.

6. Disclaimer of Non-Warranty and Non-Liability

The Product has been developed by the PenPower through stringent development and strict testing prior to release, but PenPower is unable to test all possible modular software environment use circumstances, so PenPower disclaims and is unable to warranty your use of the Product or when installing or executing the Product software, any attendant information loss, damage, or

other similar risk of loss, and you are solely responsible for and appreciate all possible risks from use of the Product.

PenPower agrees in conformity with the maximum extent allowable by law, to provide you with the Product and all available support services for the Product. But PenPower does not warrant the product hardware, software, and any information in the packaging, as to any defects or errors.

PenPower does not bear any liability to compensate any indirect, special, sudden loss, including but not limited to any loss of profit, loss affecting goodwill, information or data loss, business stoppage, computer crash or malfunction, and any other commercial use of the Product resulting in business hazards or losses. PenPower disclaims any warranty or guarantee for the Product, including but not limited to suitability for any particular purpose, infringement of any third party rights, or concealment of or concealed defects. When you sign this Agreement, you shall consider your own experience, technical skills and evaluation to judge the Product, and confirm that the Product conforms to your needs.

The PenPower further disclaims any liability for the following: (1) for any normal wear and tear arising incident to the external parts of the Product, intentional damage thereto, damage, defects, failure or error resulting in any defect, including accident, abuse, improper use, power problem, negligence, abnormal working conditions, failure to comply with PenPower instructions, without PenPower approval engaging in any improper use, change, adjustment or repair, to the Product or software, or any maintenance not authorized by PenPower, use, storage or installation without following the instructions of the Product or software, without deploying the necessary preventive maintenance, or natural disasters, fires, floods, war, violence or any similar event; (2) lost or changed password or serial number of the Product; (3) anyone other than PenPower personnel or PenPower authorized persons attempting to adjust, repair or support the Product, or software or for any use of non-PenPower provided modules or spare parts resulting in any problem.

PenPower has not licensed the use of the Product in conjunction with any life saving equipment and parts or devices, and has not authorized use of the Product for any application which might result in any human injury or death as a result of a product malfunction or defect. PenPower disclaims any and all liability and responsibility for any death or injury of any person, or any damage to property or any use or application of the product (including but not limited to) in any military or military related equipment, transportation control equipment, hazard prevention systems or medical and medical related equipment.

7. Third party provided contents or interaction

The Product may permit you to obtain third party content, software applications programs and information services (including multifaceted internet or network application programs),

and allow for interactivity (with third party contents or interaction). You agree that for any third party provided contents or interaction (including any product, service or data/information) storage and use, and any third party provided content related agreement terms and conditions, that its country of nationality's copyright law shall be the governing law.

Any third party content or interaction is not deemed to be provided by PenPower As for any third party content or interaction, provision thereof may be modified or ceased at any time for any cause, and PenPower exercises no control thereover, nor accepts or claims any responsibility for such third party content or interactions. As for any agreement entered into by you and any third party content provider, including said party's privacy policies and any use of your personal information, delivery of any product and service and payment, and any other provision, term and condition, warranty/guarantee or explanation, relating to such transaction, all such matters are solely between you and the said third party. You shall solely bear the entire liability for any use of third party content or interactions.

8. Limitations on Liability and Compensation

Even in the event that you suffer any loss consequent any cause, PenPower shall only bear responsibility in accordance with this Agreement, and the limit thereof shall be deemed to be within the amount you shall have already paid for the Product.

In any circumstance, even if PenPower is aware of the possibility of risk of damage or loss, PenPower nevertheless disclaims any liability for compensation of any loss for said known risks.

9. No Right to Sublicense

You shall not assign or sublicense any rights granted under this Agreement to use the Product to any other person or party.

10. Jurisdiction

For any disputes arising out of or relating do this Agreement, PenPower and you both agree that the court where PenPower locates shall be the jurisdiction court of the first instance.

11. Others

In the event any term or condition of this Agreement is deemed legally void and ineffective, such determination shall not affect the validity of the remaining clauses, terms and conditions, and their continuing legal validity in effect.

In the event the Product's CD-Rom in consequence of normal use suffers any defacement or damage, and is unable to be used, then PenPower agrees to provide a free replacement at no cost to you.

Menu

Chapter 1 Server Build Requirements	1-1
1.1 Hardware Specifications.....	1-1
1.2 Operating System	1-1
1.3 Database Software	1-1
1.4 Essential Environment Kits	1-1
Chapter 2 Install Essential Environment Kits	2-1
Chapter 3 Database Settings (MSSQL or PostgreSQL)	3-1
3.1 Microsoft SQL Server Related Settings.....	3-1
3.1.1 Add Microsoft SQL Server Database Account for WorldCard Team.....	3-1
3.1.2 Confirm Microsoft SQL Server Database connection Parameters.....	3-3
3.2 PostgreSQL Distributed Architecture Service Settings	3-4
Chapter 4 Connect Database via WorldCard Team Control Tool	4-1
4.1 JRE Settings.....	4-1
4.2 Server Settings.....	4-1
4.3 Database Settings.....	4-2
4.3.1 Microsoft SQL Server	4-2
4.3.2 PostgreSQL.....	4-3
4.3.3 Run WorldCard Team Service	4-4
Chapter 5 Activate WorldCard Team Service	5-1
5.1 Register WorldCard Team.....	5-1
5.2 Create User Accounts	5-1
5.3 Start to Use	5-2
5.4 Firewall Settings	5-3
5.5 External Connection Settings	5-5
Chapter 6 WorldCard Team Settings	6-1
6.1 Basic Operations.....	6-1
6.1.1 Change Password / Display Name	6-1
6.1.2 Switch Interface Language.....	6-1
6.1.3 Back to Homepage / Sign Out.....	6-1
6.2 Admin Settings	6-1
6.2.1 Manage Accounts	6-1

6.2.2 Import Account from AD Server	6-2
6.2.3 Sharing Rules	6-3
6.2.4 CRM Settings	6-4
6.2.5 Custom Field	6-4
6.2.6 System Overview	6-4
6.2.7 Certificate Information	6-5
6.3 General Settings.....	6-5
6.3.1 Share Settings.....	6-5
6.3.2 Display Settings.....	6-5
6.3.3 CRM Settings	6-6
6.4 Notification.....	6-6
Chapter 7 WorldCard Team Applications Installation	7-1
Chapter 8 Database Backup / Restore	8-1
8.1 Back up Microsoft SQL Server Database.....	8-1
8.2 Restore Microsoft SQL Server Database.....	8-2
8.3 Back up PostgreSQL Database	8-5
8.4 Restore PostgreSQL Database	8-6
Appendix: Connecting Information of AD Server.....	A-1

There may be newer versions of the software that was released during or after this product's manufacturing date. If the content in the User Manual differs from the on-screen interface, please follow the instructions on the on-screen interface instead of the User Manual.

History

v1.2.0

- March, 2018

Add JRE download instructions.

Page.1-2

Revise JRE set up instructions.

Page.2-1

- Year 2017, first version.

Chapter 1 Server Build Requirements

1.1 Hardware Specifications

The following is the minimum required hardware specifications:

- Processor: 1.6GHz Quad-Core processor.
- Memory: 8GB.
- Hard Disk: 1TB capacity. It is recommended to build up RAID 1 type to protect data.

1.2 Operating System

Choose one of the following supported versions of operating system to use:

- Microsoft Windows Server 2012 (64 bit).
- Microsoft Windows Server 2012 R2 (64 bit), or later.
- Microsoft Windows 7 Service Pack 1 (64 bit), or later.

1.3 Database Software

Choose one of the following supported database software to use:

- Microsoft SQL Server 2012 (32/64 bit).
- Microsoft SQL Server 2014 (32/64 bit).
- Microsoft SQL Server 2016 (64 bit).
- Microsoft SQL Server 2017 (64 bit).
- PostgreSQL 9.2, 9.3, 9.4, 9.5, 9.6, 10.

Note: Microsoft SQL Server Express version is not supported.

1.4 Essential Environment Kits

Please install the following essential environment kits:

- Java SE Runtime Environment 8 (JRE)
- Microsoft .NET Framework 4.5 or later.

How to download JRE suite (The instructions below is only for reference, the real situation might be different.)

Please open the URL (<http://www.oracle.com/technetwork/java/javase/downloads/index.html>), find [Java SE 8u161/ 8u162] item, and click on [JRE] download button.

Java SE 8u161/ 8u162
 Java SE 8u161 includes important bug fixes. Oracle strongly recommends that all Java SE 8 users upgrade to this release. Java SE 8u162 is a patch-set update, including all of 8u161 plus additional bug fixes (described in the release notes).
[Learn more](#) ▶

- [Installation Instructions](#)
- [Release Notes](#)
- [Oracle License](#)
- [Java SE Licensing Information User Manual](#)
 - Includes Third Party Licenses
- [Certified System Configurations](#)
- [Readme Files](#)
 - [JDK ReadMe](#)
 - [JRE ReadMe](#)

JDK
[DOWNLOAD](#) ▾

Server JRE
[DOWNLOAD](#) ▾

JRE
[DOWNLOAD](#) ▾

Find the Java SE Runtime Environment 8u162 version, select [Accept License Agreement] option, and choose [Windows x64 Offline] JRE item to download.

Java SE Runtime Environment 8u162

You must accept the [Oracle Binary Code License Agreement for Java SE](#) to download this software.

Accept License Agreement
 Decline License Agreement

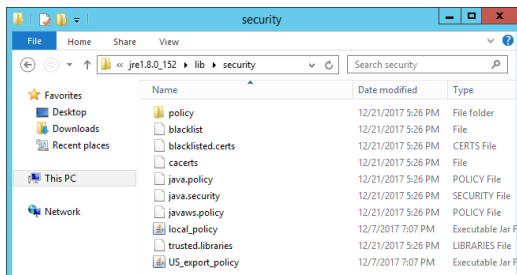
Product / File Description	File Size	Download
Linux x86	63.44 MB	jre-8u162-linux-i586.rpm
Linux x86	79.33 MB	jre-8u162-linux-i586.tar.gz
Linux x64	60.44 MB	jre-8u162-linux-x64.rpm
Linux x64	76.4 MB	jre-8u162-linux-x64.tar.gz
macOS	74.18 MB	jre-8u162-macosx-x64.dmg
macOS	65.86 MB	jre-8u162-macosx-x64.tar.gz
Solaris SPARC 64-bit	52.24 MB	jre-8u162-solaris-sparcv9.tar.gz
Solaris x64	50.01 MB	jre-8u162-solaris-x64.tar.gz
Windows x86 Online	1.78 MB	jre-8u162-windows-i586-iftw.exe
Windows x86 Offline	61.36 MB	jre-8u162-windows-i586.exe
Windows x86	64.58 MB	jre-8u162-windows-i586.tar.gz
Windows x64 Offline	68.27 MB	jre-8u162-windows-x64.exe
Windows x64	68.58 MB	jre-8u162-windows-x64.tar.gz

Chapter 2 Install Essential Environment Kits

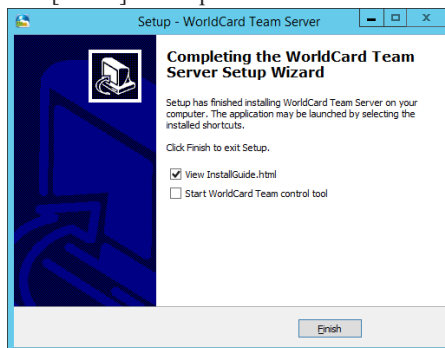
1. After installing the operating system and database software (In this manual, we take Microsoft Windows Server 2012 R2, 64bit, Microsoft SQL Server 2012 (64bit), and PostgreSQL v10 as example), please continue to complete the installations of Microsoft .NET Framework 4.5 or later version, and Java SE Runtime Environment 8 or later version.

Reminder: When installing Microsoft SQL Server, be sure you select to install the [SQL Server Management Studio] suite for creating a new database account for WorldCard Team.

2. After completing the previous installations, please navigate to C:\Program Files\Java\jre1.8.xxxxx\lib\security\policy\unlimited, and copy the [local_policy.jar] and [US_export_policy.jar] files to the C:\Program Files\Java\jre1.8.xxxxx\lib\security directory .



3. Next, please open the web browser, enter the URL (<http://download.worldcardteam.com/>) to open the download page, select the [Windows Server Edition Download] page, and download [WorldCard Team (Server)] software, and Double-click the file to install after downloading.
4. After the installation, please do not tick to run [WorldCard Team Server Control Tools], directly click [Finish] to complete the installation.

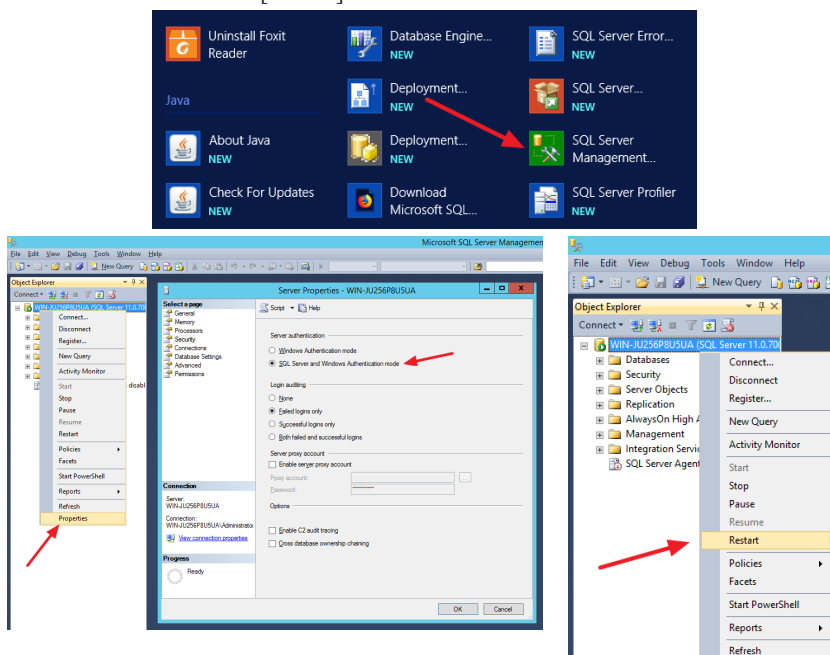


Chapter 3 Database Settings (MSSQL or PostgreSQL)

3.1 Microsoft SQL Server Related Settings

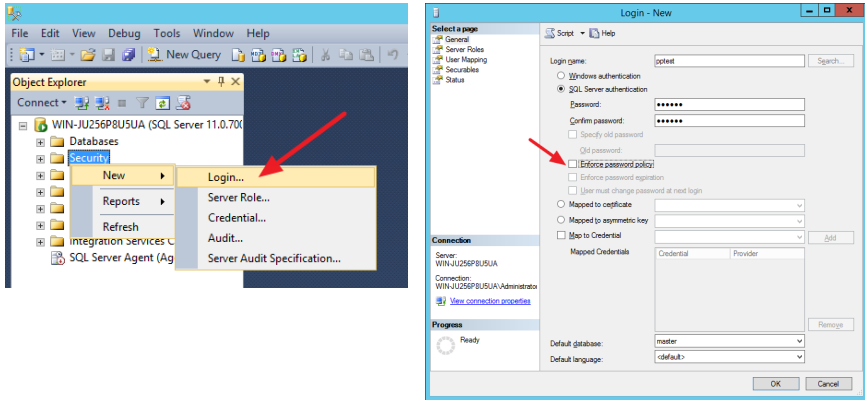
3.1.1 Add Microsoft SQL Server Database Account for WorldCard Team

If you are using Microsoft SQL Server, please open [SQL Server Management Studio] first and log in to access the database with Administrator or sa with the highest permissions. Then right click on the database server and select [Properties]. On the left side of the [Security] page, make sure you have set the server authentication as [SQL Server and Windows authentication mode]; if not, please make changes and right click on the database server and choose [Restart] to restart the database server.

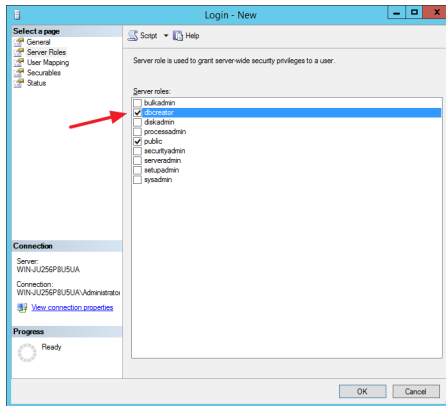


Next, we need to add a Microsoft SQL Server account for WorldCard Team to use, please expand the server folder, and right click on [Security] folder, then click [New \ Login]. Select [SQL Server authentication] in the [General] page, and enter the account / password you want to use (here we take “pptest” as example); Please note that the [Enforce

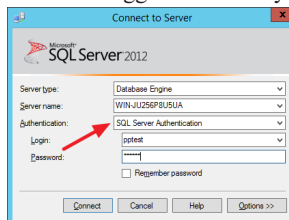
password policy] option below must be checked out.



Then click on the [Server Roles] on the left, and check [dbcreator] for this account, the others is not recommended to check to avoid security problems, and then click [OK] to complete.



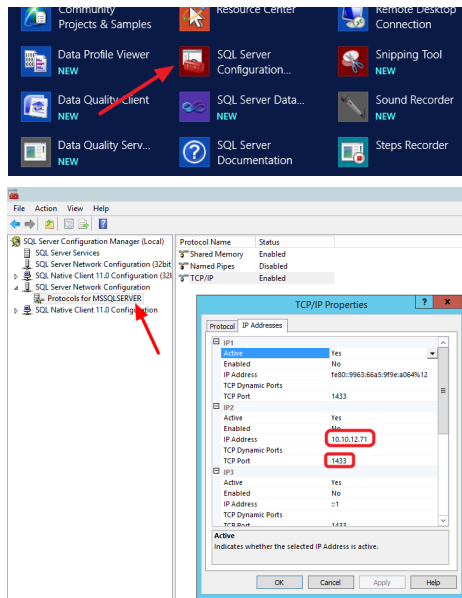
After creating the new account, it is recommended to close the SQL Server Management Studio and re-open it again, and select [SQL Server Authentication] in the [Authentication] field of login windows, then use the account / password you just created to log in to make sure the new account can be logged in correctly.



3.1.2 Confirm Microsoft SQL Server Database connection Parameters

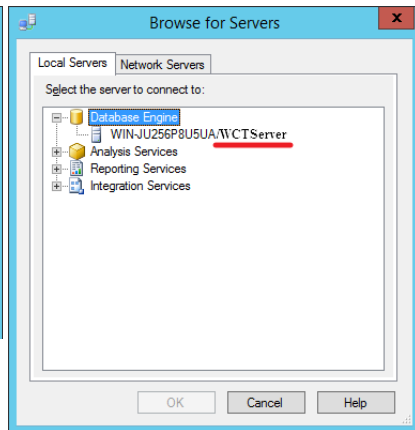
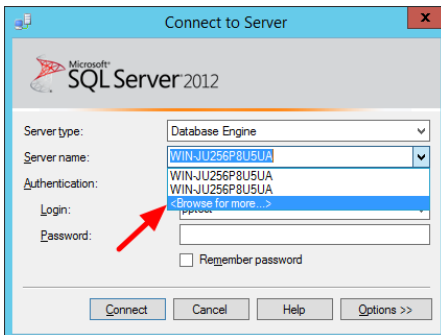
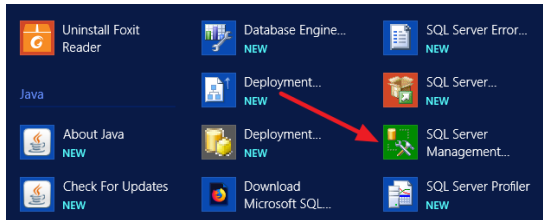
To connect the WorldCard Team Services to the database program, you need to create a dedicated database, and also obtain the necessary connection parameters: [SQL Server host], [SQL Server port] and [SQL Server instance name].

To confirm [SQL Server host] and [SQL Server port] information, please go to [Applications] and open [SQL Server Configuration Administrator]. Under [Server Network Configuration], select the protocol that your database uses, and then look at the [IP Addresses] page of [TCP/IP] item on the right to see the IP address and port information of the database server.



Reminder: The default setting of TCP/IP Network Protocol is enabled, if you found it is disable, please right click on it to enable, and then restart the SQL Server.

To confirm [Instance Name] information, open [SQL Server Management Studio], select [Browse] in the [Server name] field, and then expand the [Database Engine] folder, you can see the [Instance Name] right after the computer name and “/”. Please note that if you install Microsoft SQL Server without setting the Instance Name, there will be no name information here.



3.2 PostgreSQL Distributed Architecture Service Settings

If you are using PostgreSQL and PostgreSQL is not installed on the same server with WorldCard Team service, be aware that PostgreSQL needs to be set for WorldCard Team server to connect:

1. Go to C:\Program Files\PostgreSQL\10\data\ directory and find the [pg_hba.conf] file, and edit it by using Notepad or other software.
2. As shown below, please choose one connection parameter to add in the [IPv4 local connections] item: [host all all 10.10.12.0/24 password] or [host all all 0.0.0.0/0 trust], to enable the computers to connect to this PostgreSQL server.

The first kind of connection parameters:

- Type: host, provide connection.
- Database: all, all databases on PostgreSQL.
- User: all, all accounts on PostgreSQL.
- Address: 10.10.12.0/24, assuming WorldCard Team Server's IP section is

Chapter 3 Database Settings (MSSQL or Postgre)SQL

10.10.12.0~10.10.12.255 (the subnet mask is 255.255.255.0), 24 means the server only accept the computer in same network section to connect, which is the computer with IP 10.10.12.xx. Generally speaking, IP address split into 4 sections, the second section is 8bit, the third section is 16bit, the fourth section is 24bit, if you want to allow a computer in other network section to connect, for example, to enable a computer with IP 10.10.xx.xx to connect, you have to change 24 to 16, and also change the third IP section from 12 to 0 to make it become 10.xx.0.0.

- Method: password, use password verification.

```
# TYPE DATABASE USER ADDRESS METHOD
# IPv4 local connections:
host all all 127.0.0.1/32 md5
host all all 10.10.12.0/24 password
# IPv6 local connections:
host all all ::1/128 md5
# Allow replication connections from localhost, by a user with the
# replication privilege.
host replication all 127.0.0.1/32 md5
host replication all ::1/128 md5
```

The second kind of connection parameters:

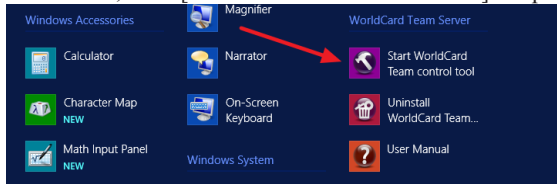
If you think you setting IP network section is troublesome for you, you can use the second parameter.

- Type: host, provide connection.
- Database: all, all databases on PostgreSQL.
- User: all, all accounts on PostgreSQL.
- Address: 0.0.0.0/0, no IP limitation.
- Method: trust, no password verification needed.

```
# TYPE DATABASE USER ADDRESS METHOD
# IPv4 local connections:
host all all 127.0.0.1/32 md5
host all all 0.0.0.0/0 trust
# IPv6 local connections:
host all all ::1/128 md5
# Allow replication connections from localhost, by a user with the
# replication privilege.
host replication all 127.0.0.1/32 md5
host replication all ::1/128 md5
```

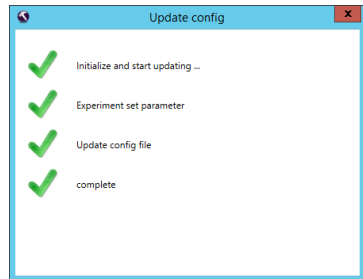
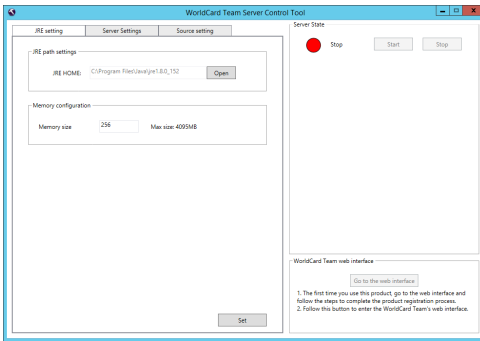
Chapter 4 Connect Database via WorldCard Team Control Tool

Next, we need to connect the WorldCard Team program with database software. In [Applications] of Windows, click [WorldCard Team Control Tool] to open.



4.1 JRE Settings

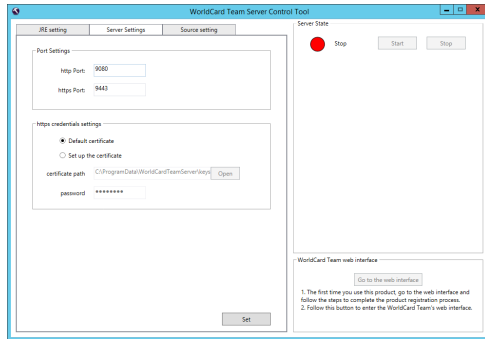
In the [JRE Settings] page, select the path of [JRE HOME], which is the JRE installation directory, for example: C: \ Program Files \ Java \ jre1.8.xxxxx \, then click [Set] button below, there will be a check procedure, if all set, the check procedure will close up itself.



4.2 Server Settings

In the [Server Settings] page, the default http and https ports of WorldCard Team services are 9080 and 9443, and you can change to other ports. If your company has its own SSL certificate, please assign the path to the certificate, otherwise, please use [Default

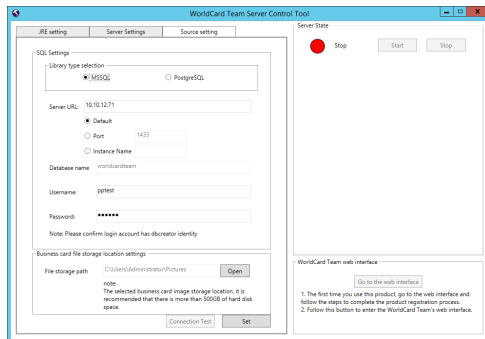
Certificate]. After setting, click [Set] button below, there will be a check procedure, if all set, the check procedure will close up itself.



4.3 Database Settings

The settings of this page is a little mor complicated, and different types of database have different settings.

4.3.1 Microsoft SQL Server



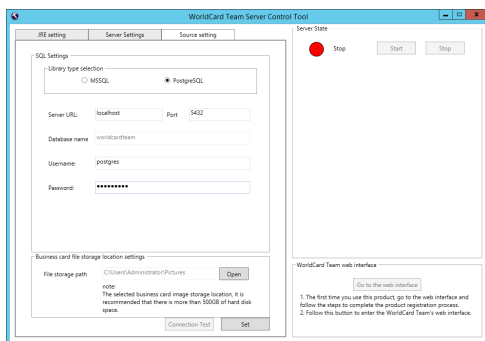
1. Database Type: Please select the database you use, for example, MSSQL.
2. Server URL: Please fill in the [SQL Server host] information described in the previous Chapter, it is recommended that you fill in the localhost IP for now to test, then refer to Chpter 5.5 for outbound network settings.
3. Connection Parameters: If you use the default settings to install Microsoft SQL

Chapter 4 Connect Database via WorldCard Team Control Tool

Server, please select [Default] here, if you have changed the port or Instance Name, please select [Port] or [Instance Name] and fill in the [SQL Server port] or [SQL Server Instance name] information described in the previous Chapter.

4. Database Name: Please note that it cannot be changed, always named [worldcardteam].
5. Database Account / Password: This is the pptest / pptest that created in the previous Chapter, for the WorlCard Team can read and write the database correctly.
6. File Storage Path: Please assign the location where you want to store all the business card images, it is recommended to assign to the location which at least has 500GB of hard disk space.

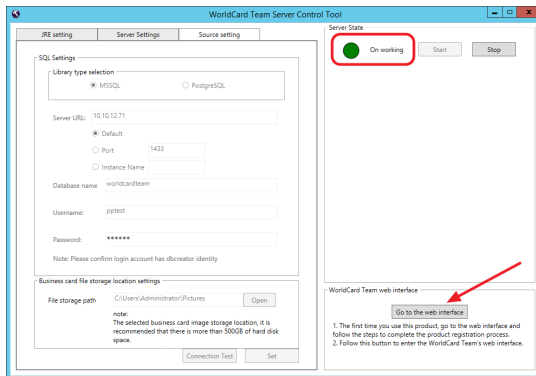
4.3.2 PostgreSQL



1. Database Type: Please select the database you use, for example, PostgreSQL.
2. If PostgreSQL is installed locally, use the default value of [localhost], otherwise enter the PostgreSQL server's IP or URL. If PostgreSQL is not installed locally, refer to Chapter 3.3 for distributed architecture configuration.
3. Port: Please enter PostgreSQL's port, the default will be 5432.
4. Database Name: Please note that it cannot be changed, always named [worldcardteam].
5. Database Account / Password: Please enter the default administrator account (postgres) and password when installing PostgreSQL.
6. File Storage Path: Please assign the location where you want to store all the business card images, it is recommended to assign to the location which at least has 500GB of hard disk space.

4.3.3 Run WorldCard Team Service

When all the above settings are all done, click the [Set] button below and then click the [Connection Test] button to test. After passing the connection test, start the WorldCard Team service by clicking the [Start] button at the upper right of the [WorldCard Team Control Tool] window, and access WorldCard Team service to activate it by clicking [Go to the web interface] button at the lower right after WorldCard Team service successfully ran.



Chapter 5 Activate WorldCard Team Service

5.1 Register WorldCard Team

Following the previous chapter, when clicking [Go to the web interface], the World-Card Team's initial registration page will open, please follow the instructions to fill in the Activation Code, the Email Address of administrator, and your Company's Information, and then continue to fill in the User Name and login password of Administrator.

The image shows two side-by-side screenshots of a web registration interface. The left screenshot, titled "Step1. Activate WorldCard Team Server.", contains several input fields: "Activation code:" (a 4-digit numeric keypad), "Admin Email:", "Confirm Email:", "Company name:", and "Phone:". Below these fields is a "Notes" section with two numbered instructions. The right screenshot, titled "Step2. Set admin password", contains input fields for "User name:", "Password:" (with a strength indicator), and "Confirm password:". Navigation arrows are visible between the two steps.

Step1. Activate WorldCard Team Server.

Activation code:

Admin Email:

Confirm Email:

Company name:

Phone:

Notes :

1. If you have purchased the WorldCardTeam product, please find the "Software Startup" card in the box and enter the activation code and related information to obtain authorization to get started.
2. If you do not have a WorldCardTeam product activation code, please contact us.

Step2. Set admin password


User name:


Password: Please enter password

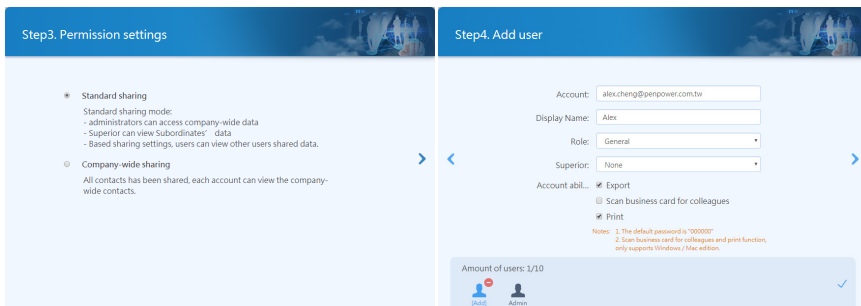
Confirm password: Please enter Password again

5.2 Create User Accounts

Before you create any user, you have to decide to either let different users has their own permissions to share specific information, or just let all users reach all the shared information. When you create a user, you can set the user as General account or Read-Only account, and connect this user with his supervisor if there is any. After setting up, the different users will have different access permissions.

Please enter the first account information that is to be established, and set the level of the account, as well as the permissions and functions the account can be used; If you allow a user to export the contact data, or allow a user to help others to scan business cards (special feature on PC version), please choose the related options to enable. After finishing adding the first user, click  to add more users to complete the whole activate process.

If you want to delete the account which is created by mistake, please click  on the account picture to delete.

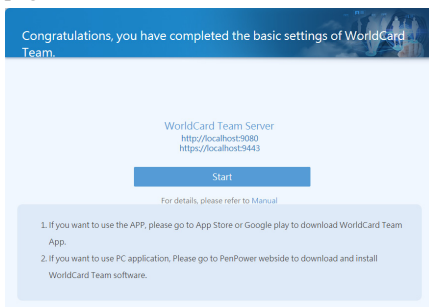


Note:

1. *The default password for the new user is "000000". When the user first logs in, the system will ask the user to reset the password.*
2. *All user settings can be modified in the [Manage Accounts] section of WorldCard Team settings, you may refer to Chapter 6.2.*
3. *Read-only users can add / edit their own contact data, but for [Shared Contacts] data, they can only view it, they cannot be download and edit it.*


5.3 Start to Use

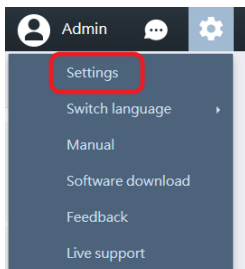
WorldCard Team settings can only be changed by administrator logging in on the web page. When the activation is complete, you will see the URL of the WorldCard Team server on the screen. Click [Start] button or enter the URL in the browser to launch WorldCard Team web page.



Note: *The port of the WorldCard Team service is 9080 (http) and 9443 (https). If you want to access manually or provide a URL for any user, please add [: 9080 or: 9443] after the URL to connect correctly.*



Chapter 5 Activate WorldCard Team Service

After opening, please enter administrator account / password to log in. After that, we recommend you to watch the tutorial to quickly understand the functions; Then please click the  icon on the upper-right corner of screen, and choose [Settings] to enter WorldCard Team Settings.



In the settings, you can use the user account management, or adjust the data sharing settings, or add some customized fields according to the whole company's needs, if you want WorldCard Team users to connect to your company CRM system like Salesforce, please set up here.

If you want to adjust any system-related settings for the WorldCard Team server, go to the System Settings section and click the [System Settings] tab. Click the [Go to WorldCard Team Server Management Interface] button to enter WorldCard Team server system. The login account is [admin], and the password is what you set in the initial step previously. For details, please refer to chapter 3.

If you want to expand the maximum number of user accounts, please click  button in the [System Overview] section to purchase more license, and then click  button to enter the activation code to update.

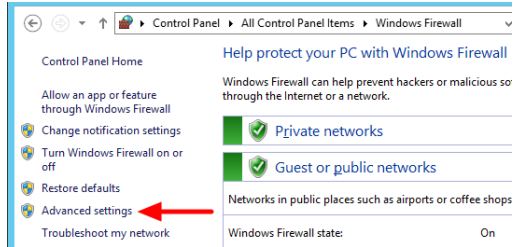
Please refer to the Chapter 6 for a variety of setup instructions for WorldCard Team.

5.4 Firewall Settings

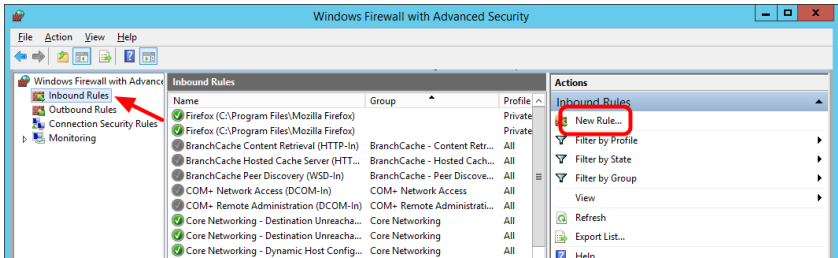
Because WorldCard Team Service uses special connection ports, you have to set up the firewall to open those ports for users to connect.

The following instruction is based on the system's firewall, please set up the system firewall, router firewall and so on according to your company's equipments.

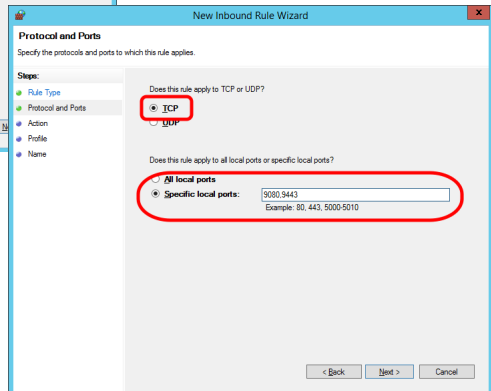
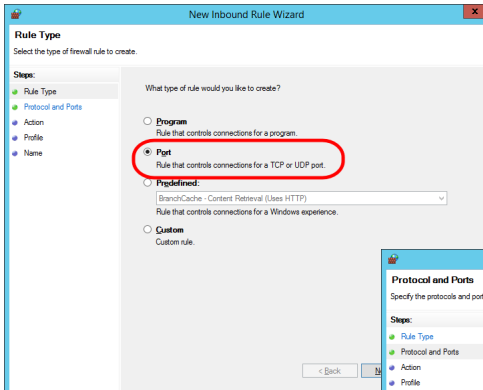
1. First of all, please open [Windows Firewall], and click [Advanced settings] on the left.



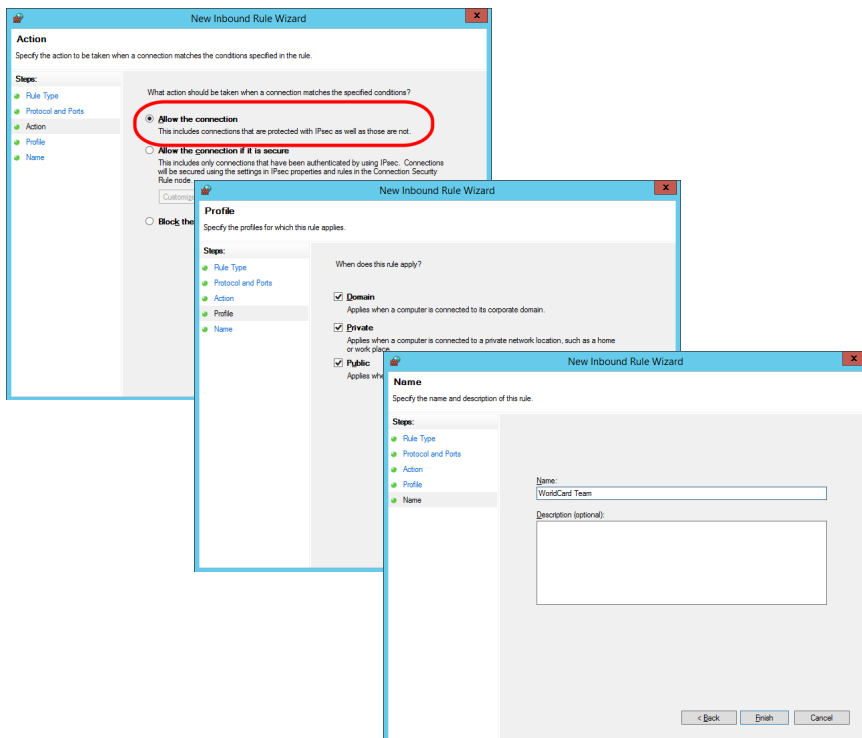
2. Click [Inbound Rules] on the left, then click [New Rules] on the right.



3. Select [Port], and select [TCP] option in the next step, then fill in the ports at [Specific local ports] that used by WorldCard Team, such as [9080, 9443].



- Then select [Allow the connection], and tick the types of connection that to be applied to this rule in the subsequent steps, and also the name for this rule for future identification.



- In the last, in the [Outbound Rules] section, add the same rule to open the WorldCard Team external connections, then the whole setup is complete.

5.5 External Connection Settings

If the users need to connect back to company to use WorldCard Team Service from any external network, please refer to the following instructions to set up:

Outbound Network Uses Fixed IP

- No matter using IP address or URL to login WorldCard Team service, please pay attention on the internal IP and external IP conversion issue. Make sure you have set the corresponding IP address of the internal WorldCard Team server on the NAT-



enabled device.

2. For the URL login, the MIS engineer can set the DNS to assign a URL for WorldCard Team server, but if the DNS setting is difficult to you, you can just using IP address to login.
3. Please note the connection ports (9080 and 9443) have to be opened in all the server and internet firewalls. For the related instructions, please refer to Chapter 5.4.



External Network Uses Floating IP

1. If your company's external network IP is floating IP, we recommend you to apply for a fixed IP, or obtain a fixed URL by applying DDNS service.
2. Please note the connection ports (9080 and 9443) have to be opened in all the server and internet firewalls. For the related instructions, please refer to Chapter 5.4.


Chapter 6 WorldCard Team Settings

6.1 Basic Operations


6.1.1 Change Password / Display Name

Click  on top right corner, and then click [Profile]. Click  on each field to make changes. If you forgot the password, click [Forgot Password] on the main screen to reset.


6.1.2 Switch Interface Language

Click  on top right corner, and then click [Switch Language] to choose interface language.




6.1.3 Back to Homepage / Sign Out

Click the word [WorldCard Team] on top left corner to go back to Homepage; to sign out, click  on top right corner, and then click [Sign Out].

6.2 Admin Settings

WorldCard Team settings can only be changed by administrator logging in on the web page, and then click  on the upper-right corner of screen, and choose [Settings].

6.2.1 Manage Accounts

Here you can click the icons on the toolbar to add  or edit  user account, if any user forgot the password, please click  to reset the password back to 000000 and inform the user to log in as soon as possible to reset the password, or you can tell the user to click [Forgot Password] button on the login page by themselves to reset password.

Reminder: When creating accounts, please make sure you enter the correct Email address, to prevent users can not be logged in properly.

Add user

Account:
Email

Display Name:
User name



Role:
General



Superior:
None

Account ability:
 Export
 Scan business card for colleagues
 Print

Notes:
1. The default password is "000000"
2. Scan business card for colleagues and print function, only supports Windows / Mac edition.

OK Cancel


If the user account is created by mistake, if this account has never logged in, you can easily click  to delete it. But if this account has already logged in before, it cannot be deleted, you can only click  to set this user account as inactive user. If the owner of this user account has no longer in the company, you can also set the account as inactive.

Once the user account is set as inactive, it cannot be activated again, and the contact data belongs to this user account cannot be deleted by this user account as well; If you need to transfer those contact data to new employee, please click [Inactive User] tab, and click  icon on the toolbar to inherit those contact data to the new user account (employee) who is going to take over this job, and the owner of those contact data will be changed immediately to that new employee; Or you can click  to change the data owner one by one, and the new user will be able to continue use the data.

Tips: All the shared contact data that shared by of the disabled user account can be continued use and be continuously used and updated by the users who get shared.

6.2.2 Import Account from AD Server

WorldCard Team also supports the quick import of accounts from an Active Directory Server, for you to quickly create accounts.

Click  on the quick toolbar, and then enter the AD server information that to be imported (server address, server account and password, Base DN), click OK, then you

can read the account information.

If you do not know the connecting information of the AD server you want to import, please refer to the Appendix of this manual.

After ticking the accounts you want to import, press the button to add the accounts to the import list. To remove accounts from the import list, just click on the account and press to remove it.

Import the AD server account(10.10.11.24)

Account: Search

<input type="checkbox"/>	Account	
<input checked="" type="checkbox"/>	wct1	
<input type="checkbox"/>	wct3	
<input type="checkbox"/>	wct4	
<input type="checkbox"/>	wct5	
<input type="checkbox"/>	wct6	
<input type="checkbox"/>	wct7	
<input type="checkbox"/>	wct8	
<input type="checkbox"/>	wct9	
<input type="checkbox"/>	wct10	

Account

When the import process is complete, please edit the imported accounts to set the account's role, level and which function can be allowed, then the whole importation is done. For these imported accounts, the password to login the WorldCard Team service is the same as that settings on AD server, it will not be reset to 000000.

Reminder: The number of AD accounts that can be imported is the remaining number of accounts that you have enabled. For example, if the number of enabled accounts is 30, and 10 accounts have been manually created or imported, then the maximum number of accounts that can be imported this time is 20.

6.2.3 Sharing Rules

You already set up this during the initialization, and you can change it again here.

Standard Sharing

- Administrators can access company-wide data.
- Superior can view Subordinates' data .

- Based on sharing settings, users can view the data that shared by other users.

Company-wide Sharing


- All contacts have been shared, each account can view the company-wide contacts.

6.2.4 CRM Settings

If you want WorldCard Team users to connect to your company CRM system like Salesforce, please click [Settings] to enable.

If the administrator enables the feature to connect CRM system, click CRM Settings under General Settings, and input log in information of your CRM system. You can manually export contacts to CRM systems, or have WorldCard Team synced with CRM. WorldCard Team will sync with CRM system every 10 minutes if the sync function is on.

6.2.5 Custom Field



WorldCard Team provides field customization feature, you can add up to 16 customized fields. Please click  to add new field. and then enter the field title and field property to complete.

There are 7 properties for custom fields:

1. Text: Can fill in texts and symbols.
2. Email: Can only fill in the data with Email format.
3. Picklist: Customize menu content to allow users to select, the menu item limitation are 10.
4. Number: You can only enter integer numbers.
5. Floating-point Number: You can enter a value that contains a decimal point.
6. Date: Add date.
7. Date Time: Add date and time.

Reminder: *In the contact edit screen, if the input box frame is displayed in red, it means that the input data format is not accepted, please check and correct.*

6.2.6 System Overview

Here you will see information about the current usage of the WorldCard Team server, including how many users and how many contacts, and more. To add more user licenses, please click  to purchase, and then click  to activate.


Reminder: If your administrator account is imported from the AD server, and the AD account does not have Email information, WorldCard Team will remind you to add Email information in [Personal Information] in order to increase the authorization when adding authorization.

6.2.7 Certificate Information

This page displays the SSL certificate information of the https protocol that WorldCard Team server uses. If you need to change it, please open [WorldCard Team Control Tool] to change.

6.3 General Settings

6.3.1 Share Settings

Here you can choose whether you want to automatically share the new added contacts with the specific users or not. When Share Settings function is turned on, newly added contacts will be shared with the specified users. Click  to remove users from the sharing list.

For detailed information regarding Share Settings, please refer to Chapter 2.2.4 of [Web User Manual].

In addition, you can click the [Clear the contacts never being downloaded by any user] button to delete the contacts that belong to you but never downloaded by anyone, and this can let you save more useful information.

6.3.2 Display Settings

Under [Display Map of Address], you can choose an online map to display the address of contacts.

- **Auto:** System selects map basing on contact country information. Baidu map for China; Google map for other countries.
- **Google Map:** To display address on Google Map


- **Baidu Map:** To display address on Baidu Map.

Under [Display Name Settings], you can decide the display order of first Name and last Name. Eastern names and western names can have different settings.


6.3.3 CRM Settings

WorldCard Team can work with CRM systems. If the administrator enable the feature to connect CRM system, click CRM Settings under General Settings, and input log in information of your CRM system. You can either manually export contacts to CRM systems, or have WorldCard Team synced with CRM. WorldCard Team will sync with CRM system every 10 minutes if the sync function is on.

6.4 Notification

You will receive notification when someone shares a contact with you, or WorldCard Team settings have been updated. Click  on the top right corner of the main screen to review messages.

Messages from the system or other users can't be deleted manually. The system has a limit of 500 messages to display. Once it reaches the limit, the oldest messages will be automatically deleted by the system.

If you are notified that someone shared a contact with you, you will see the key information of the contact in the notification, including name and company. You can select the contact and click  to download the contact to [My Contacts].

Note: You can click *Date / Sharer / Description on top of the screen to sort your notification messages.*


Chapter 7 WorldCard Team Applications Installation

© Windows

To install WorldCard Team application, please open web browser and access (<http://download.worldcardteam.com/>) to open download page, then click [WorldCard Team (Windows)] to download. When the download is finished, please double click it to start install.

After installing and launching the WorldCard Team application, please enter the WorldCard Team server URL and key in your account / password to log in.

© Mac

To install WorldCard Team application, please open App Store  in Mac system, and enter [WorldCard Team] in the upper-right search bar to search.

Click [Get] button, and enter your Apple account / password to start download. When the download is finished, you will be able to find WorldCard Team application in [Applications].

After launching the WorldCard Team application, please enter the WorldCard Team server URL and key in your account / password to log in.

© iOS / Android

To install WorldCard Team app, please open App Store / Google Play in your iOS / Android device, and search [WorldCard Team] to download and install.

Or you can read the QR code below to access the download page:

iOS



Android



After downloading and launching the WorldCard Team app, please enter the WorldCard Team server URL and your account / password to log in.

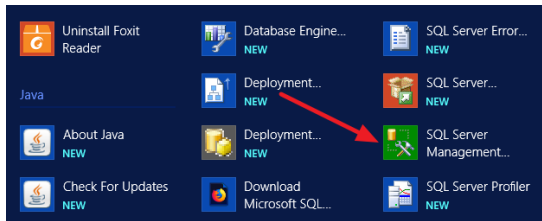
*** Reminder: You are advised to log out WorldCard Team to reduce server's loading if you are not accessing it.**

Chapter 8 Database Backup / Restore

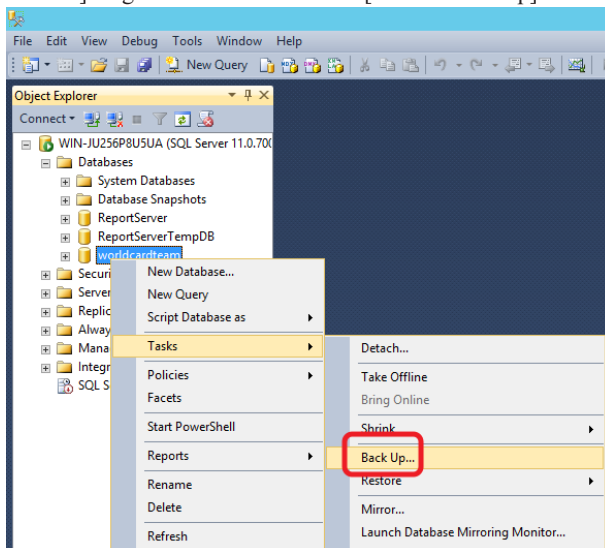
8.1 Back up Microsoft SQL Server Database

To back up WorldCard Team’s database of Microsoft SQL Server, please follow these steps:

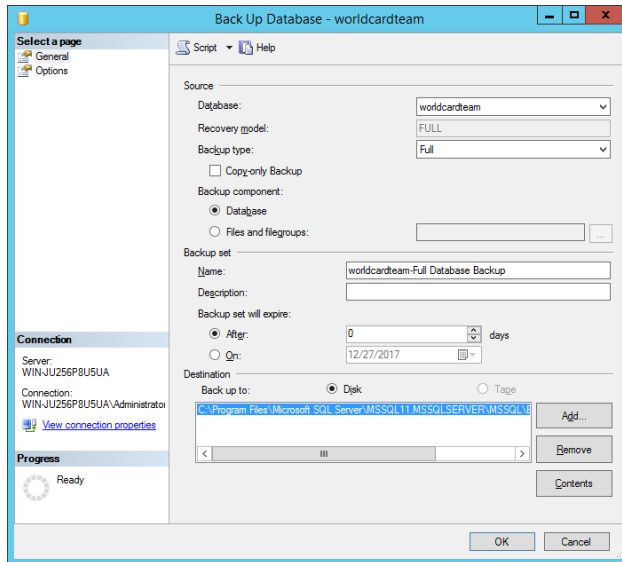
1. Please open [WorldCard Team Server Control Tool] and stop the WorldCard Team service.
2. Click [SQL Server Management Studio] in [Applications] to open the console and login with Administrator or sa account.



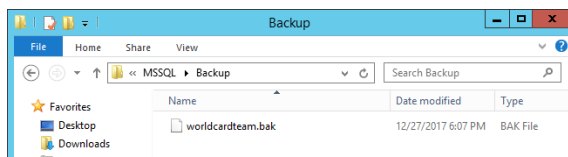
3. Expand [Databases] in the left pane and locate WorldCard Team's database [worldcardteam]. Right-click on it and select [Tasks \ Back Up].



4. After confirming the path to save the backup file, click the [OK] button to start the backup.



5. After the backup is complete, you can see the file appears in the destination folder your assigned.

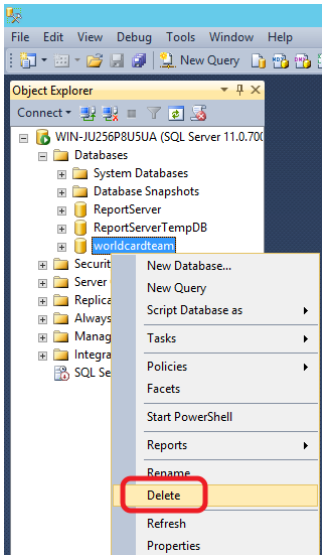


6. At last, remember to back up the business card images. The business card image's location is where you set in [WorldCard Team Control Tool] previously. Please note to back up the entire business card image folder, and do not change the folder name and structure of it, once any different from the current setting, the card images will not be loaded after restoration. For example, if the path for storing business card images at that time is set to: D:/Card Image, and the whole [Card Image] folder needs to be backed up with the database intact.

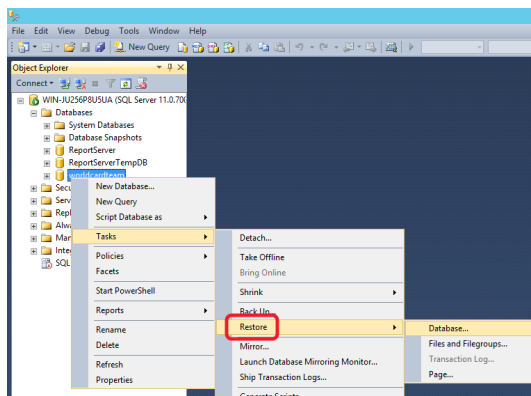
8.2 Restore Microsoft SQL Server Database

To restore WorldCard Team's database of Microsoft SQL Server, please follow these steps:

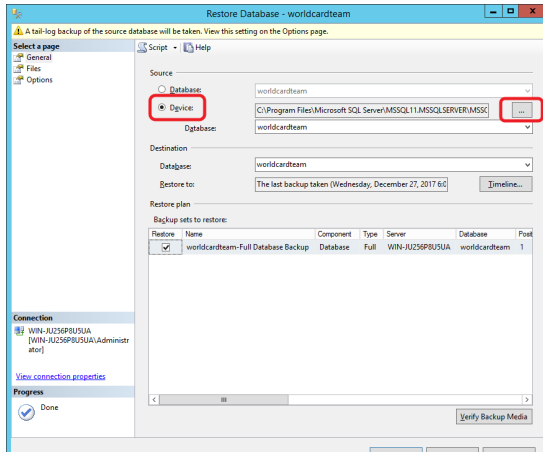
1. Click [SQL Server Management Studio] in [Applications] to open the console and login with Administrator or sa account.
2. Expand [Databases] in the left pane and locate WorldCard Team's database [worldcardteam]. Right-click on it and select [Delete] to delete the current database that you don't want to use anymore; If you are willing to restore on the new server, please skip this step.



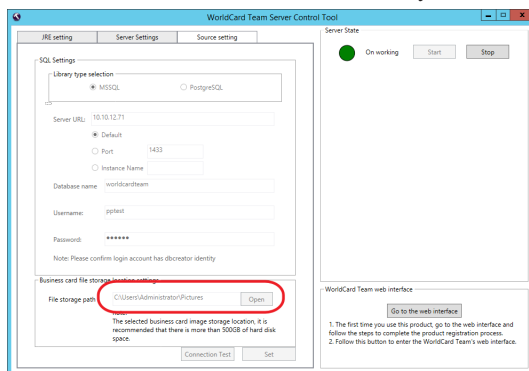
3. Right-click on [Database] in the left pane and select [Tasks \ Restore \ Database].



4. Select [Device] in [Source] section, and browse the database backup file in this computer, and click [OK] to restore.



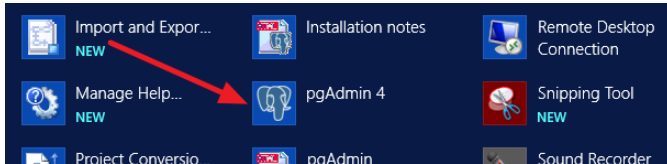
5. After the restore is complete, please copy the business card image folder which was backed up with the database, and paste to the new location on this server. Please note do not change the folder name and structure of the business card image folder, once any different from the original setting, the card images will not be loaded after restoration. For example, if the entire folder name you backed up is [Card Image], you have to move the entire [Card Image] folder to the new location.
6. Last step, please open the [WorldCard Team Control Tool], and select [File Path] under the [Source Setting] page, then assign the path to the business card image folder you just placed, and then run the WorldCard Team service to confirm that the business card information and user information are correctly loaded.



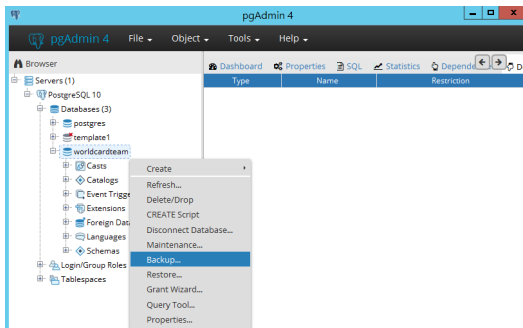
8.3 Back up PostgreSQL Database

To back up WorldCard Team’s database of PostgreSQL, please follow these steps:

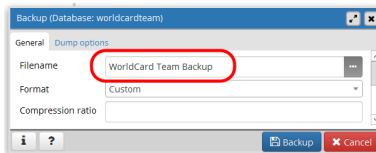
1. Please open [WorldCard Team Control Tool] and stop the WorldCard Team service.
2. Go to the PostgreSQL console by clicking [pgAdmin4] from [Applications].



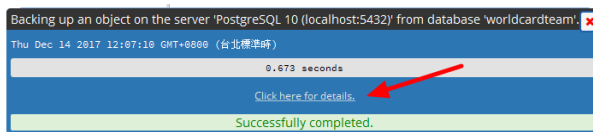
3. Expand [Server \ PostgreSQL 10 \ Databases] in the left pane and locate WorldCard Team's database [worldcardteam]. Right-click and it select [Backup].

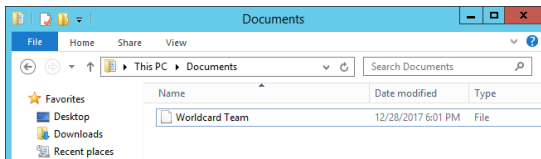
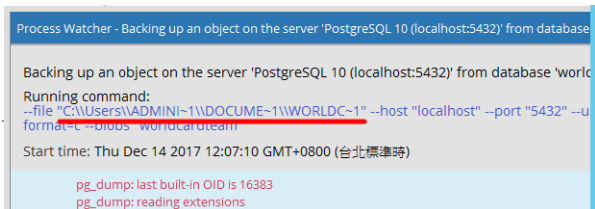


4. Enter the backup database file name for future to identify, and click the [Backup] button, it will start the backup.



5. After the backup is complete, the backed up database file will be stored in the [Documents], if you want to check the correct path, you can click [Click here for details] wording on the popped message.



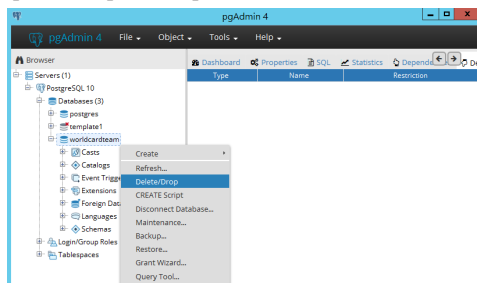


- At last, remember to back up the business card images. The business card image's location is where you set in [WorldCard Team Control Tool] previously. Please note to back up the entire business card image folder, and do not change the folder name and structure of it, once any different from the current setting, the card images will not be loaded after restoration. For example, if the path for storing business card images at that time is set to: D:/Card Image, and the whole [Card Image] folder needs to be backed up with the database intact.

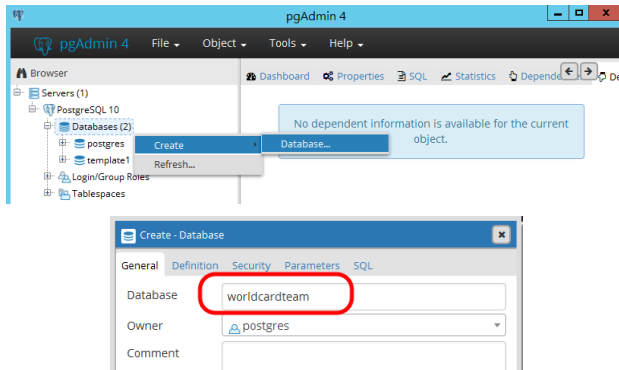
8.4 Restore PostgreSQL Database

To restore WorldCard Team's database of PostgreSQL, please follow these steps:

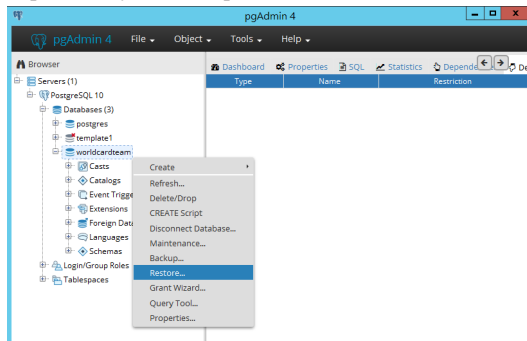
- Go to the PostgreSQL console by clicking [pgAdmin4] from [Applications].
- Expand [Server \ PostgreSQL 10 \ Databases] in the left pane and locate WorldCard Team's database [worldcardteam]. Right-click and it select [Delete] to delete the current database that you don't want to use anymore; If you are willing to restore on the new server, please skip this step.



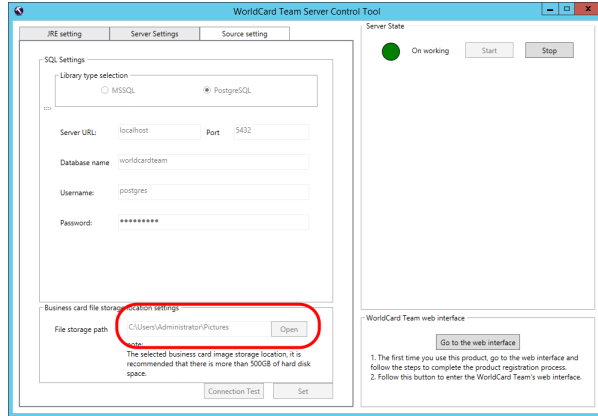
3. Right-click on [Databases] in the left pane, select [Create \ Database], and set the new database name to the same [worldcardteam].



4. Once created, right-click on the new worldcardteam database and select [Restore], then select the previously backed up database file to restore.



5. After the restore is complete, please copy the business card image folder which was backed up with the database, and paste to the new location on this server. Please note do not change the folder name and structure of the business card image folder, once any different from the original setting, the card images will not be loaded after restoration. For example, if the entire folder name you backed up is [Card Image], you have to move the entire [Card Image] folder to the new location.
6. Last step, please open the [WorldCard Team Control Tool], and select [File Path] under the [Source Setting] page, then assign the path to the business card image folder you just placed, and then run the WorldCard Team service to confirm that the business card information and user information are correctly loaded.

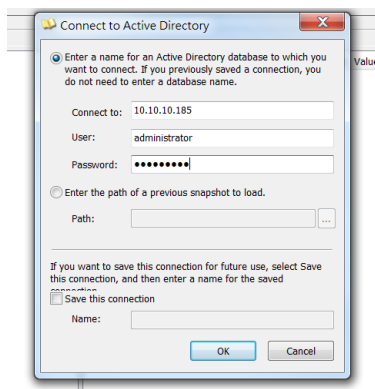
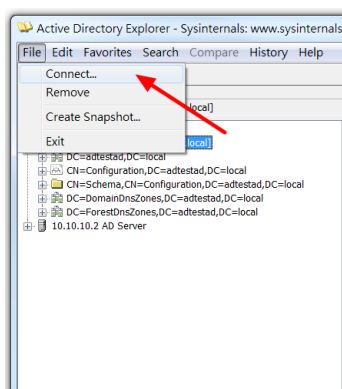


Appendix: Connecting Information of AD Server

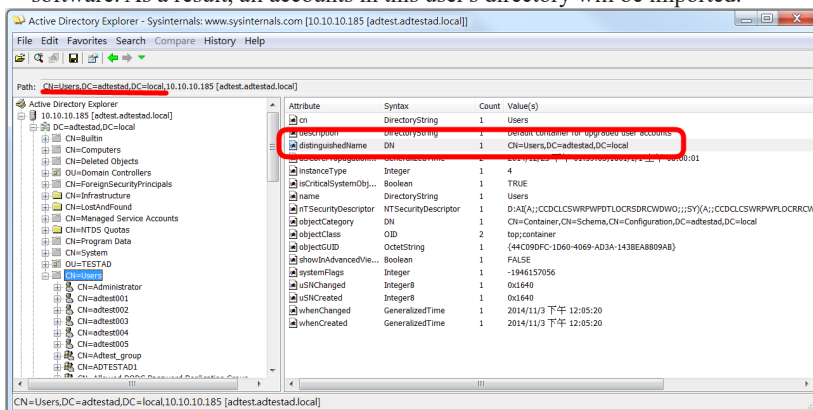
If you are not clear with the connecting information of AD server, please refer to the instructions below:

1. Access the URL below to download and install the free AD Explorer tool of Microsoft: <https://technet.microsoft.com/en-us/sysinternals/bb963907.aspx>
2. Execute "ADExplorer.exe", and Click [File] \ [Connect], and enter the IP address/ Account/password of your company's to connect.

Reminder: This IP address/Account/Password are the required information to fill in when you import the AD accounts to WorldCard Team.



3. Then in the left pane, expand the user directory under the server. As shown in the following image, find the [DistinguishedName] item in the user directory. The value of this item is [BaseDN], which is the information to be filled in WorldCard Team software. As a result, all accounts in this user's directory will be imported.



WorldCard Team - Windows Server Edition

v1.2 Administrator Manual

Manufacturer: PenPower Technology Ltd.

Release: March, 2018