

Google Cloud Print for iR ADVANCE, i-SENSYS, imagePRESS

Installation Guide

Version 3.0.0

Canon, the Canon logo, iR, iR ADVANCE, i-SENSYS, imagePRESS, MEAP and the MEAP logo are the property of Canon Europa N.V, Canon Inc or their licensors.

Google®, Google Cloud Print™ and Gmail™ are registered and unregistered trademarks of Google Inc.

Windows® is a registered trademark of Microsoft Corporation in the United States and other countries.

Other brand, company or product names used herein may be the trademarks or registered trademarks of their respective holders.

© 2016 by Canon Europa N.V. Bovenkerkerweg 59 1185 XB Amstelveen The Netherlands. All rights reserved.

No part of this publication may be reproduced, stored in a retrieval system, transmitted or communicated in any form, mechanical or electronic, including photocopying and recording, without the prior written permission of Canon Europa N.V.

Canon Europa N.V. shall not be liable for any direct, incidental or consequential damages of any nature, or losses or expenses resulting from the use of this material.

Canon Europa N.V.
Bovenkerkerweg 59
1185 XB
Amstelveen
The Netherlands

How This Manual is Organised

Chapter 1 Introduction

Chapter 2 Installation

Chapter 3 Google Cloud Print Registration

Glossary Glossary of Terms

Contents

How This Manual is Organised	iii
Contents	iv
Preface	v
How to Use This Manual	vi
Conventions Used in This Manual	vi
Chapter 1: Introduction.....	1
Overview of the installation process	2
System Requirements	2
Devices	2
Supported applications	3
MEAP Applications	3
Chapter 2: Installation.....	4
Installing the Google Cloud Print for iR ADVANCE, i-SENSYS, imagePRESS MEAP Application.....	4
Installation via Content Delivery System (CDS).....	5
Installation via Service Management Service (SMS).....	8
Setting the authentication details	12
Chapter 3: Google Cloud Print Registration	16
Google Cloud Print for iR ADVANCE, i-SENSYS, imagePRESS MEAP Application	17
Google Cloud Print Registration	17
Google Cloud Print Unregistration.....	19
Replenish the Google Certificate.....	20
Language Support	22
Frequently Asked Questions	23
Glossary of Terms	25

Preface

This manual is designed for use by Canon Implementation Teams for installing the Google Cloud Print for iR ADVANCE, i-SENSYS, imagePRESS MEAP application on customers' machines and in providing a customised solution to those customers. Please read this manual thoroughly before operating the product in order to familiarise yourself with its capabilities.

How to Use This Manual

This manual assumes the reader is part of a Canon Implementation Team with extensive knowledge of printer and Windows operations.

Conventions Used in This Manual

The following conventions are used throughout the manual:



Important

Indicates important items or precautions that should always be observed. These should always be read to avoid damage to the application due to improper operation.



NOTE

Indicates items for reference or supplementary information. Reading these notes is highly recommended.

Field Names

Field names are highlighted in bold and italic text.

Buttons

Buttons are highlighted in bold text.

[Screen Names]

The names of screens, windows and dialogs are within square brackets.

device-name

Any variable items that should be substituted by 'real' values are shown in italics.

Chapter 1: Introduction

This chapter provides a brief overview of the installation process for the Google Cloud Print for iR ADVANCE, i-SENSYS MEAP, imagePRESS application and outlines the system environment required for successful installation.

Chapter 1: Introduction..... 1

Overview of the installation process.....2

System Requirements2

- Devices2
- Supported applications3
- MEAP Applications3

Overview of the installation process

Installing the application consists of the following steps:

1. Install and license the Google Cloud Print for iR ADVANCE, i-SENSYS, imagePRESS MEAP application.
2. Register the device as a Google Cloud Print ready printer.

These steps are described in detail in the following chapters.

System Requirements

The following is the operational specifications for the Google Cloud Print for iR ADVANCE, i-SENSYS, imagePRESS MEAP application.

Devices

Google Cloud Print for iR ADVANCE, i-SENSYS, imagePRESS supports various iR ADVANCE, i-SENSYS, imagePRESS devices that are listed in the table below. The MEAP and Firmware version are shown; later versions are supported.

The Direct Printing Kit iR option is required in order to print files. For LBP devices, PCL should have already been pre-installed.

Table 1 - Supported Devices

Model	Controller Version	MEAP version
imageRUNNER ADVANCE C5051(i) / C5045(i) / C5035(i) / C5030(i)	8201.108.7101	v4.30
imageRUNNER ADVANCE C7055i / C7065i	6039.108.5901	v4.30
imageRUNNER ADVANCE 6075(i) / 6065(i) / 6055(i)	4602.0.3801	v4.30
imageRUNNER ADVANCE C2020i / C2030i /	2801.0.5301	v4.20
imageRUNNER ADVANCE 4025i / 4035i / 4045i / 4051i	1702.0.1202	v4.40
imageRUNNER ADVANCE C5255i / C5250i / C5240i / C5235i	3501.108.1501	v4.50
imageRUNNER ADVANCE C7270i / C7260i / C7280i	2420.108.1603	v4.50SP1
imageRUNNER ADVANCE 6275i / 6265i / 6255i	2001.0.1702	v4.50SP1
imageRUNNER ADVANCE c2230i / C2225i / C2220i /	57.0.101	v4.50SP2

Model	Controller Version	MEAP version
imageRUNNER ADVANCE 400 / 500 /	1502.0.701	V4.60
i-SENSYS LBP7680Cx	R4.98/H B27.72	v4.40
i-SENSYS LBP6680x	R4.98/H B28.48	v4.40Sp1
i-SENSYS LBP7780Cx	R2.05/H B30.32	v4.50Sp3
i-SENSYS LBP6780x	R0.50/P B31.20	v4.50Sp4
imageRUNNER ADVANCE 4251i / 4245i / 4235i / 4225i	1604.0.1501	v4.60SP1
imageRUNNER ADVANCE C250i / C350i / C350iF	1301.0.302	v4.60SP4
imagePRESS C600i	3052.108.3031	v4.60SP3
imageRUNNER ADVANCE C3320 / C3320i / C3325i / C3330i	804.0.1002	v4.70
imageRUNNER ADVANCE 6575i / 6565i / 6555i	1301.0.501	v4.80
imageRUNNER ADVANCE 8505 / 8595 / 8585	1301.0.501	v4.80

Supported applications

For the applications supporting Google Cloud Print according to Google, please refer to <http://www.google.com/cloudprint/learn/apps.html>.

MEAP Applications

Google Cloud Print for iR ADVANCE, i-SENSYS, imagePRESS MEAP application can co-exist with other MEAP applications and other USB enabled MEAP applications.

Chapter 2: Installation

This chapter describes how to install the Google Cloud Print for iR ADVANCE, i-SENSYS, imagePRESS MEAP application.

Chapter 2: Installation..... 4

Installing the Google Cloud Print for iR ADVANCE, i-SENSYS, imagePRESS MEAP Application.....4

- Installation via Content Delivery System (CDS).....5
- Installation via Service Management Service (SMS).....8
- Setting the authentication details12

Installing the Google Cloud Print for iR ADVANCE, i-SENSYS, imagePRESS MEAP Application

This section describes the procedure for installing the Google Cloud Print for iR ADVANCE, i-SENSYS, imagePRESS MEAP application on a MEAP device.



Important Give the End User License Agreement to the customer to read. The customer must agree with the End User License Agreement before you can install the software. If the customer does not agree with the End User License Agreement, the software cannot be installed. When you install the application via Service Management Service (SMS), the End User License Agreement (EULA) will be displayed and you will be prompted to accept it. If you do not accept it, the installation will abort.

The End User License Agreement is also available for download at the following site: <http://www.canon-europe.com/eula/>

Installation via Content Delivery System (CDS)

The CDS installation may only apply to MFP devices.

To install the Google Cloud Print for iR ADVANCE, i-SENSYS, imagePRESS MEAP application via CDS you will require the sixteen digit License Access Number (LAN).

From the MFP's touch panel:

1. Login in as System Manager (if required)
2. From the **Settings/Registration** menu select **Management Settings**

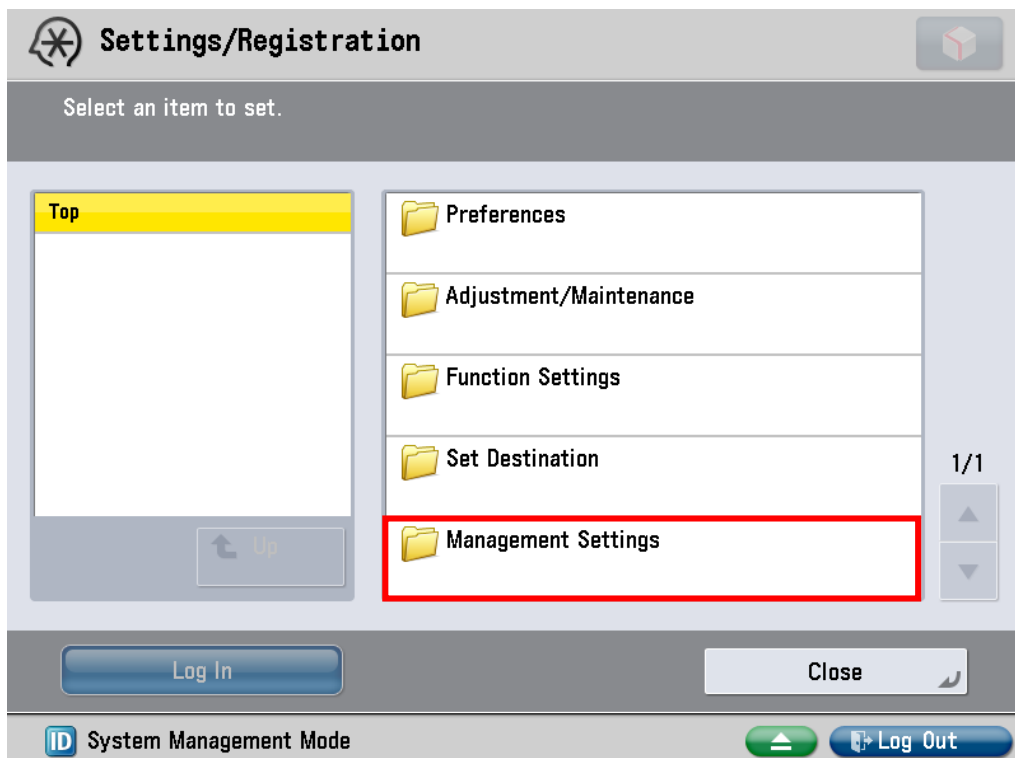


Figure 1 – Management Settings

3. Select **License/Other**

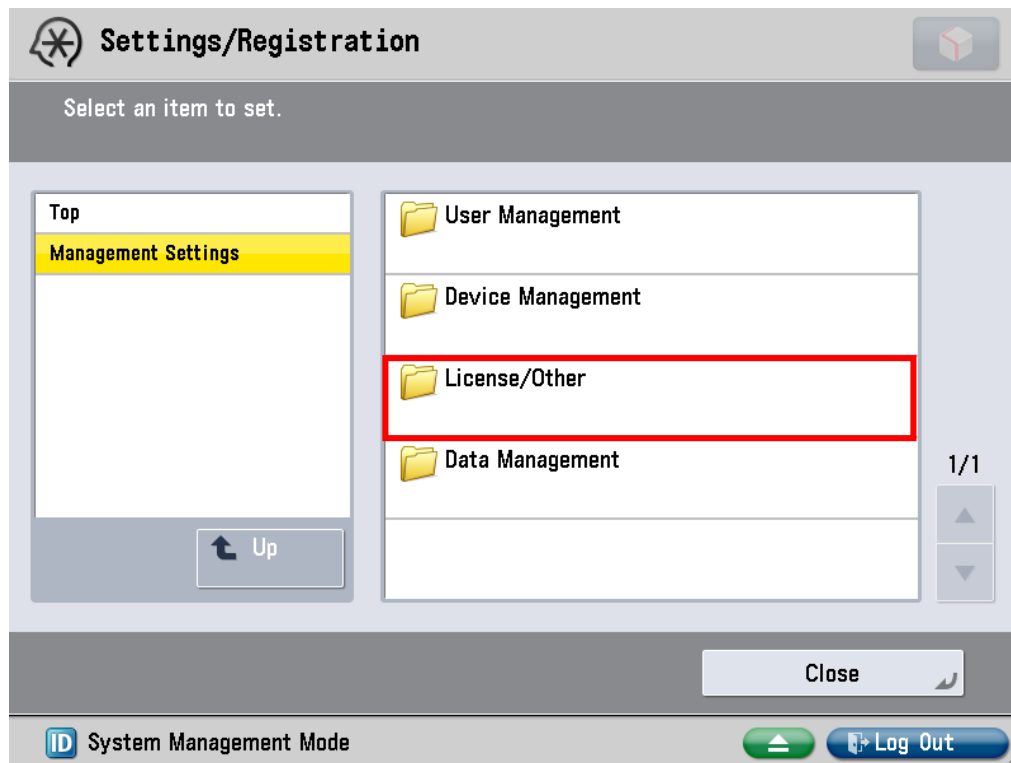


Figure 2 – License/Other

4. Select **Register/Update Software**

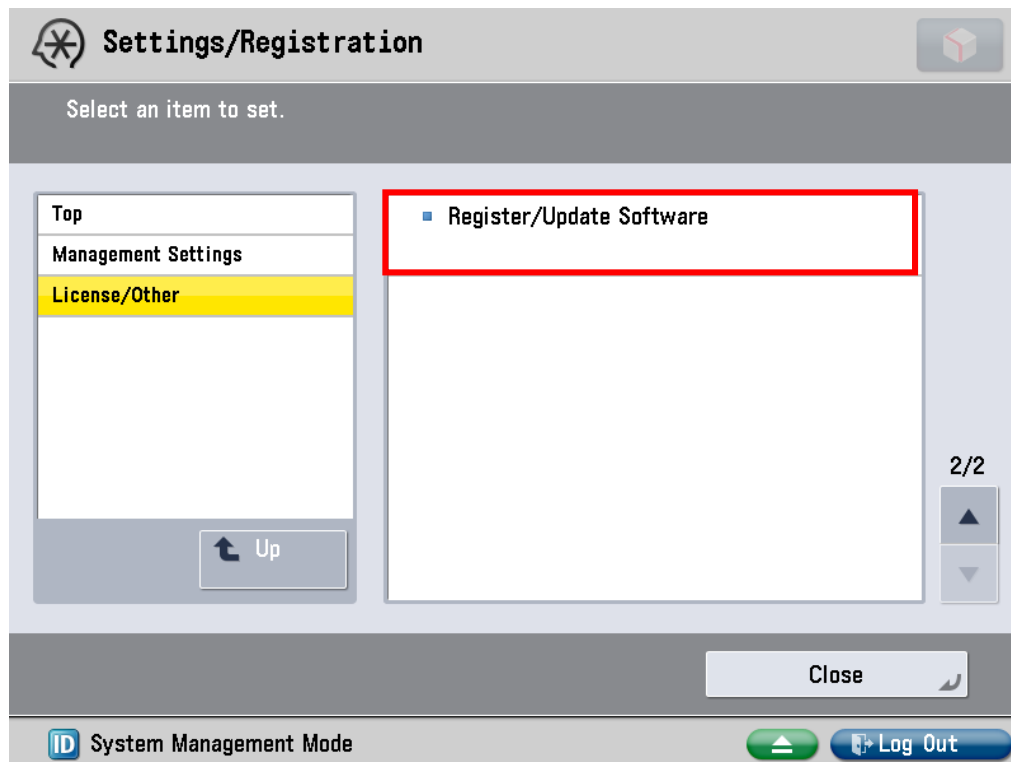


Figure 3 – Register/Update Software

5. Click **Install Applications/Options**

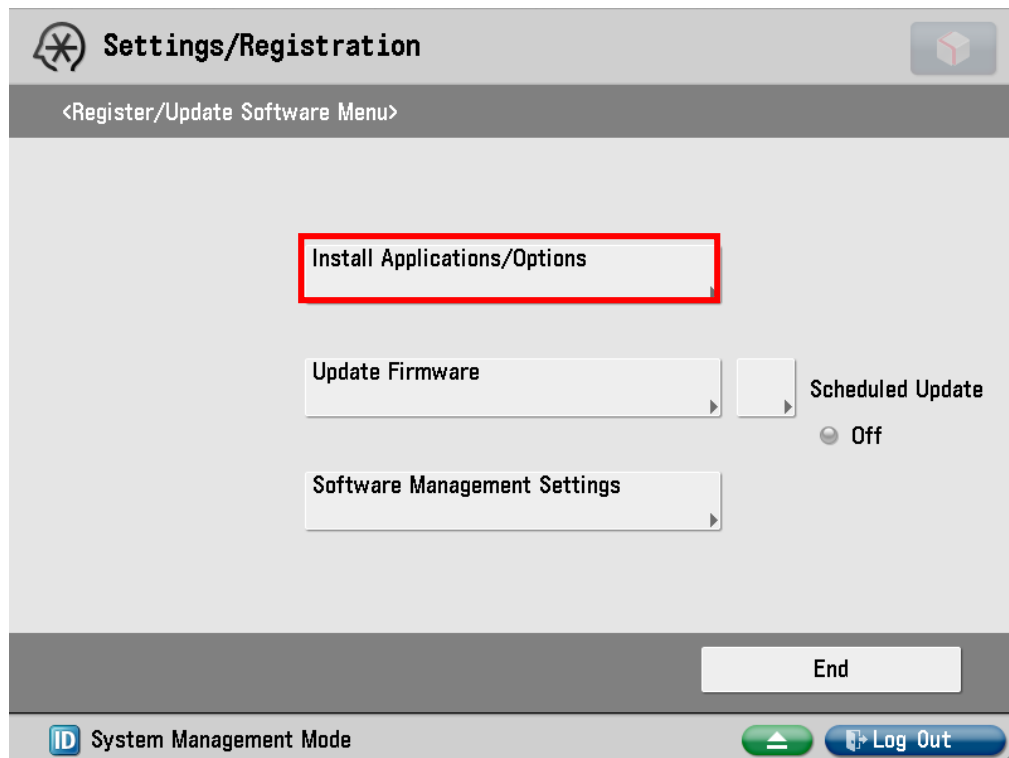


Figure 4 – Install Applications/Options

6. Enter the sixteen digit LAN shown below:
3XVE-F8N3-X7US-HEFQ
7. Click **Start** to start the installation process



Figure 5 – License Entry

Installation via Service Management Service (SMS)

Follow the instructions below to install the Google Cloud Print for iR ADVANCE, i-SENSYS, imagePRESS MEAP application via SMS.

1. Login to Service Management Service (SMS)

Open your web browser and login to SMS by entering the URL:

[https://\[device ip address\]:8443/sms](https://[device ip address]:8443/sms)

where [device ip address] is the IP address of the device on which you wish Google Cloud Print for iR ADVANCE, i-SENSYS, imagePRESS MEAP application to be installed.

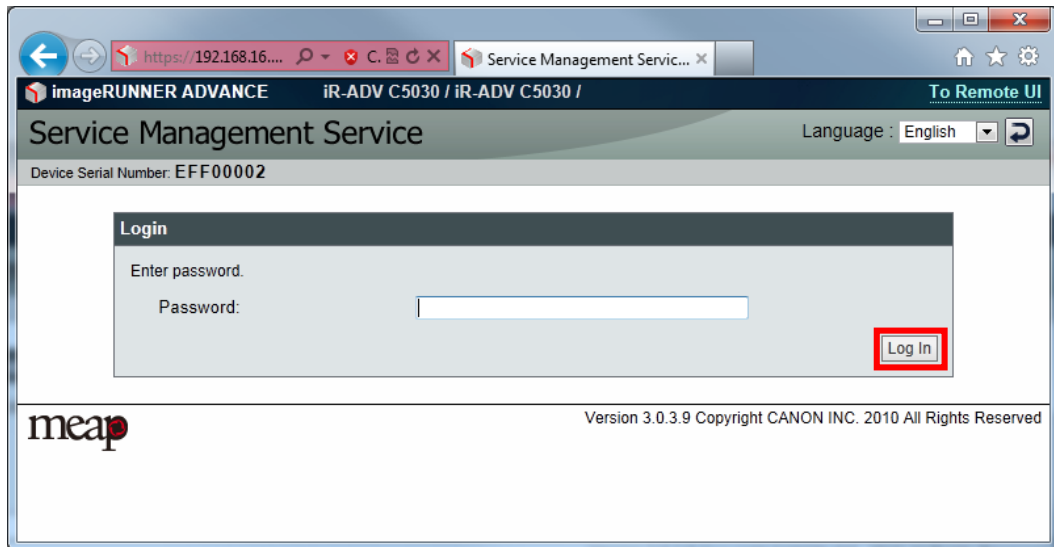


Figure 6 - Login screen

Enter the appropriate password in the **Password** field. The default password is:

MeapSmsLogin

Click the **Log In** button to login to SMS. If the password you entered is incorrect an error message will be displayed.

2. Commence the Installation

On successful login the SMS screen shown below is displayed showing a list of applications that are currently installed on the device.

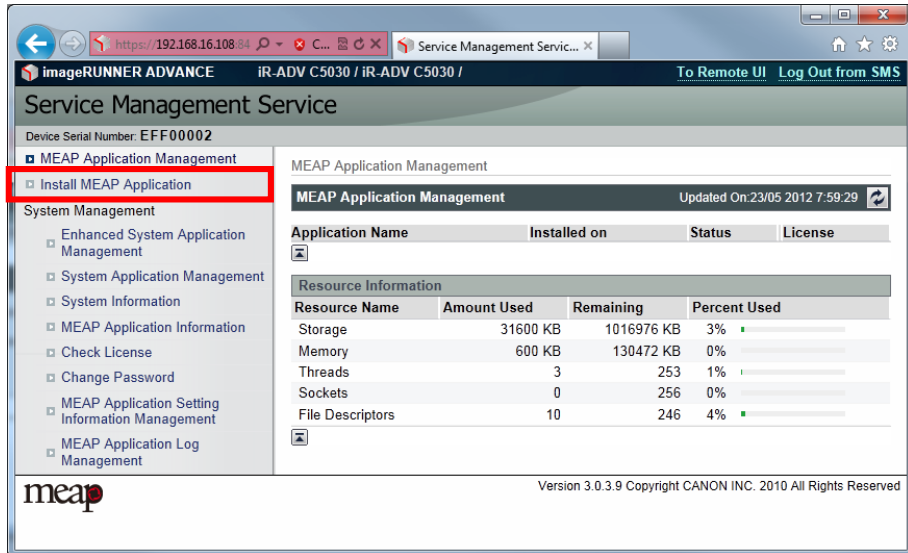


Figure 7 - MEAP Application Management screen

Click **Install MEAP Application** and the screen shown in Step 3 is displayed.

3. Browse to the Jar File

For imageRUNNER ADVANCE C3320 / C3320i / C3325i / C3330i ensure that the “**Only Install**” radio button is selected.

Click the **Browse** button to browse to the location where the Google Cloud Print for iR ADVANCE MEAP, i-SENSYS, imagePRESS application jar file can be found.

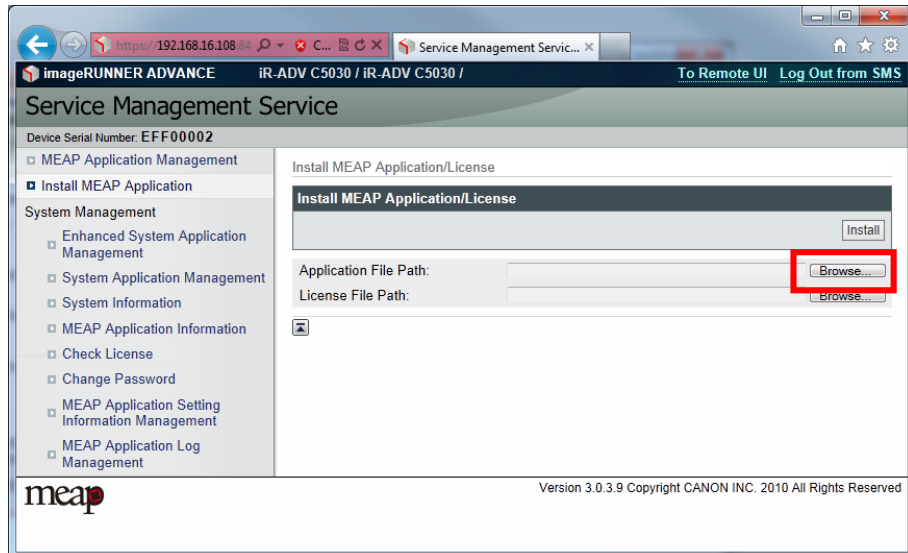


Figure 8 - Browse to the MEAP application

4. Enter the License Information

Before you can proceed with the installation you must provide the license file for Google Cloud Print for iR ADVANCE, i-SENSYS, imagePRESS MEAP application.

Click the **Browse** button next to the **License File** field to browse to the location where the Google Cloud Print for iR ADVANCE, i-SENSYS, imagePRESS MEAP application license file can be found.

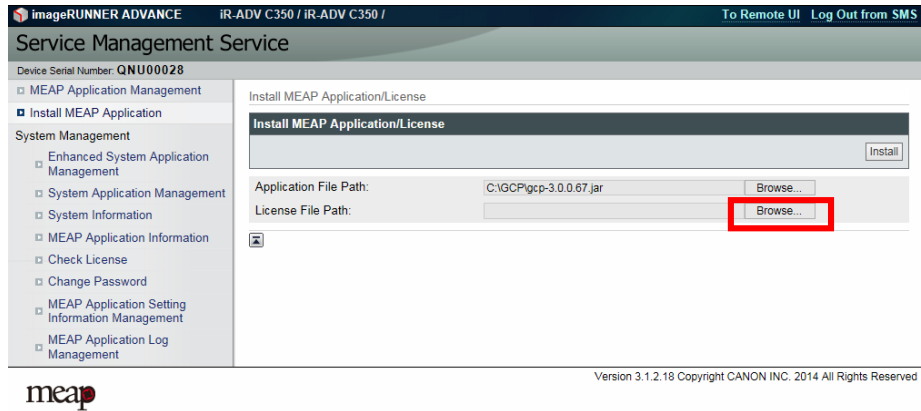


Figure 9 - Browse to the license file

Select the license file then proceed to Step 5 to continue with the installation.

5. Display Summary

Once you have entered the path names for both the Google Cloud Print for iR ADVANCE, i-SENSYS, imagePRESS MEAP application jar file and the license file, click the **Install** button to proceed with the installation.

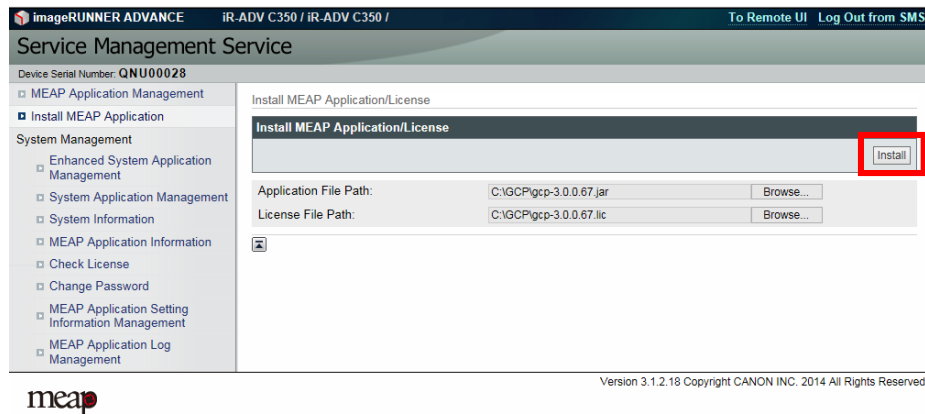


Figure 10 - Start the installation

This displays a summary, shown below, of the application you just selected for installation.



NOTE

An error message will be displayed if you failed to provide the name of a valid license file and/or jar file. You will not be able to proceed with the installation until you have provided both.

6. Confirm the Installation Details

If the summary details are correct, click the **Yes** button to proceed with the installation.

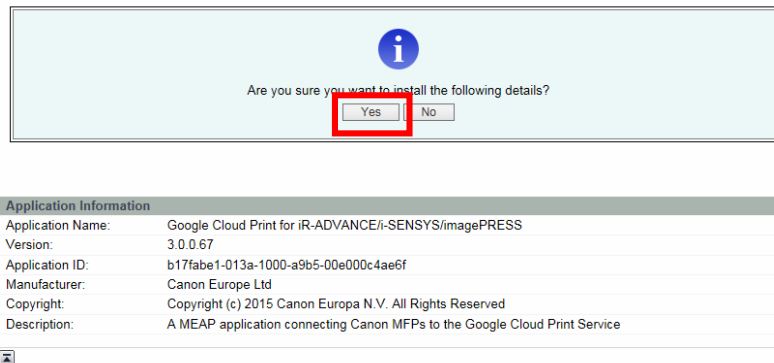


Figure 11 - Confirm the installation details

7. Accept the EULA

The End User License Agreement page is then displayed.



Figure 12 - Accept the EULA

Click the **I Accept** button, to accept End User Licence Agreement. This will continue the installation. If the **I Do Not Accept** button is clicked, the installation will be aborted. The EULA can be displayed in five languages – English, German, Spanish, French or Italian by changing the language in the language drop down list at the top right.



Important The terms of the End User License Agreement must read and accepted by the end user. If the end user does not agree with the End User License Agreement, the software cannot be installed.



Important If you are installing the software on behalf of the end user please give the End User License Agreement to the end user to read.
The End User License Agreement is available for download at the following location:

<http://www.canon-europe.com/eula/>

When the **I Accept** button is clicked, the Google Cloud Print for iR ADVANCE, i-SENSYS, imagePRESS MEAP application is displayed in the list of available applications, with the status 'Installed'.

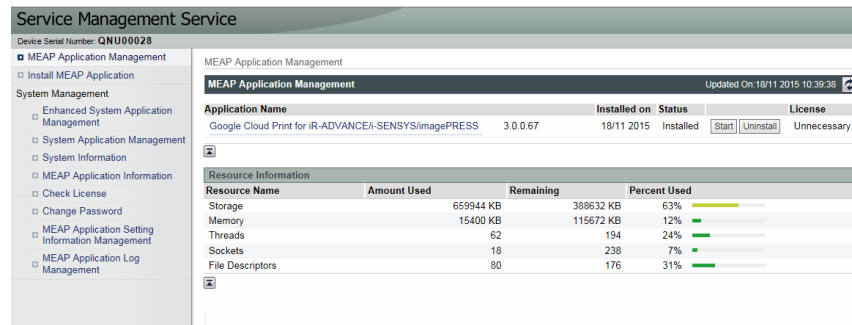


Figure 13 - Application installed

Once installation is complete you are now required to set the application's Authentication Details. Please proceed to **Setting the authentication details**.

Setting the authentication details

Before starting the Google Cloud Print for iR ADVANCE, i-SENSYS, imagePRESS MEAP application for the first time the authentication details must first be set.

1. Login to Service Management Service (SMS)

If you are already logged into SMS then please proceed to step 2.

Open your web browser and login to SMS by entering the URL:

[https://\[device ip address\]:8443/sms](https://[device ip address]:8443/sms)

where [device ip address] is the IP address of the device on which you wish Google Cloud Print for iR ADVANCE, i-SENSYS, imagePRESS MEAP application to be installed.

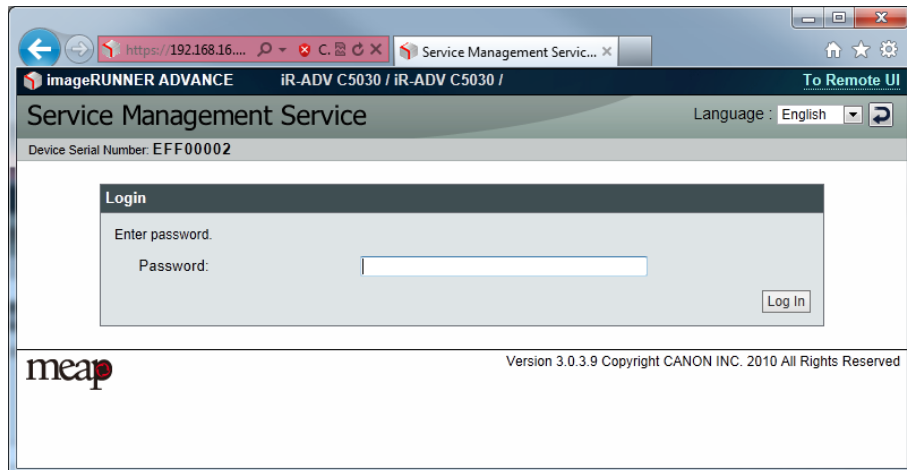


Figure 14 - Login screen

Enter the appropriate password in the **Password** field. The default password is:

MeapSmsLogin

Click the **Log In** button to login to SMS. If the password you entered is incorrect an error message will be displayed.

2. Select the Google Cloud Print for iR ADVANCE, i-SENSYS, imagePRESS MEAP application

Click the **Google Cloud Print for iR ADVANCE, i-SENSYS, imagePRESS** application link and the screen shown in Step 3 is displayed.

Service Management Service
Device Serial Number: QNU00028

MEAP Application Management

MEAP Application Management Updated On: 18/11 2015 10:39:38

Application Name	Version	Installed on	Status	License
Google Cloud Print for iR-ADVANCE/i-SENSYS/imagePRESS	3.0.0.67	18/11 2015	Installed	Start Uninstall Unnecessary

Resource Information

Resource Name	Amount Used	Remaining	Percent Used
Storage	65944 KB	388632 KB	63%
Memory	15400 KB	115672 KB	12%
Threads	62	194	24%
Sockets	18	238	7%
File Descriptors	80	176	31%

Figure 1 - Select Google Cloud Print for iR ADVANCE, i-SENSYS, imagePRESS MEAP application

3. Select Authentication Information Settings

A screen showing licensing details on the Google Cloud Print for iR ADVANCE, i-SENSYS, imagePRESS MEAP application is displayed. Click the **Authentication Information Settings** button to proceed to the [Authentication] screen where you can enter the required authentication details.

imageRUNNER ADVANCE iR-ADV C350 / iR-ADV C350 / To Remote UI Log Out from SMS

Service Management Service
Device Serial Number: QNU00028

MEAP Application Management > Application/License Information

Application/License Information Authentication Information Settings | Back

Application Information

Application Name: Google Cloud Print for iR-ADVANCE/i-SENSYS/imagePRESS
Version: 3.0.0.67
Application ID: b17fabe1-013a-1000-a9b5-00e00c4ae6f
Installed on: 18/11 2015
Description: A MEAP application connecting Canon MFPs to the Google Cloud Print Service
Manufacturer: Canon Europe Ltd
Copyright: Copyright (c) 2015 Canon Europa N.V. All Rights Reserved
URL: http://www.canon-europe.com/
Point of Contact: meap@canon-europe.com

Import Package:
com.canon.meap.service.http com.canon.meap.service.lms
com.canon.meap.service.lms.event com.canon.meap.service.login
com.canon.meap.service.sa com.canon.meap.service.storage javax.servlet
javax.servlet.http org.osgi.framework org.osgi.service.http org.osgi.service.log

Resources Used

Storage: 16000 KB
Memory: 5000 KB
Threads: 18
Sockets: 4
File Descriptors: 25

License Information

License Management

Status: Unnecessary

meap Version 3.1.2.18 Copyright CANON INC. 2014 All Rights Reserved

Figure 2 - Press the Authentication Information Settings button

4. Set Authentication Details

If a System Manager has been set then enter the system manager id and pin.

If no System Manager is set then any number can be entered (up to a maximum of seven digits) as the **Department ID PIN**. Then enter any number (up to a maximum of seven digits).

If a login application is installed different types of credentials may be required depending on the login application in use. It is important that the account used has administrator rights on the device.

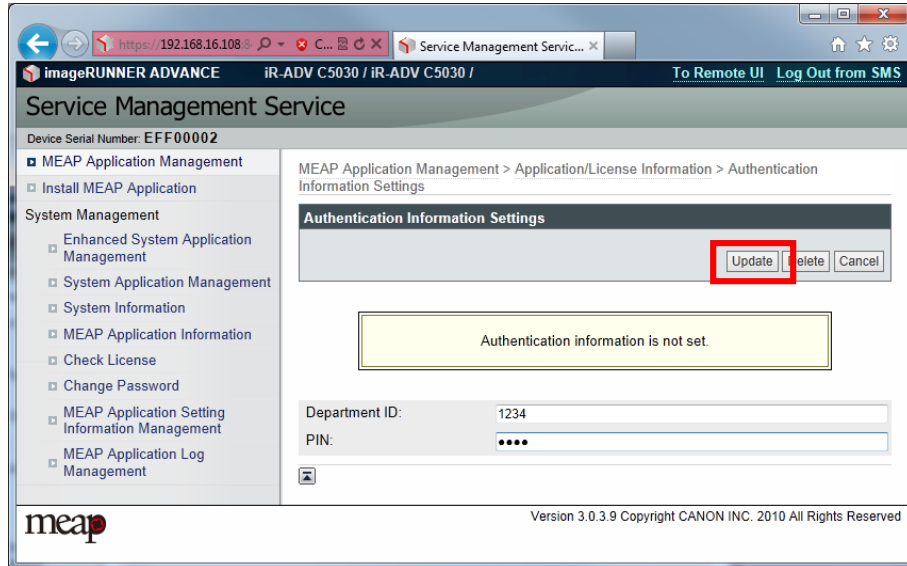


Figure 3 - Set Authentication Details

Click the **Update** button to apply the settings. The **Message** box will confirm that the authentication details are set correctly.

5. Select Application List Link

Click the **MEAP Application Management** link.

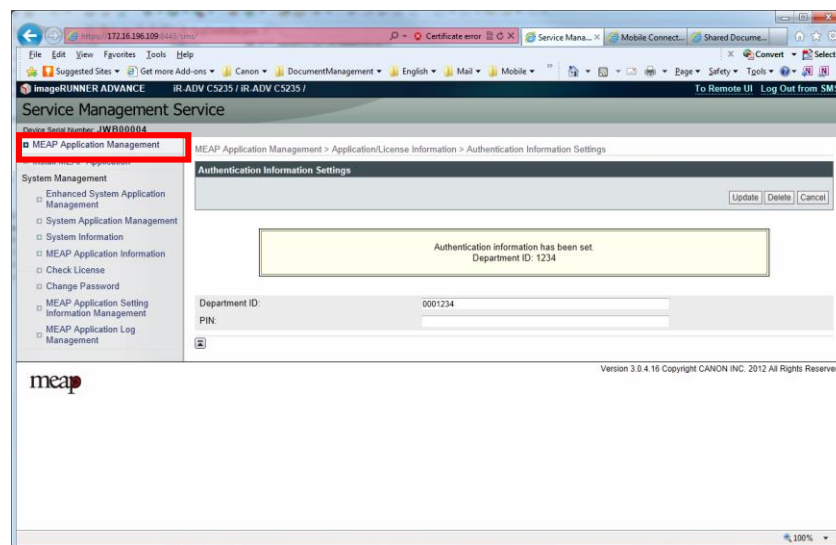


Figure 4 - Navigate to MEAP Application Management

6. Start Google Cloud Print for iR ADVANCE, i-SENSYS, imagePRESS MEAP application

The screenshot displays the 'Service Management Service' interface. On the left is a navigation menu with options like 'MEAP Application Management', 'System Management', and 'MEAP Application Information'. The main content area is titled 'MEAP Application Management' and shows a table of installed applications. The application 'Google Cloud Print for iR-ADVANCE-i-SENSYS/imagePRESS' is listed with a status of 'Installed'. A red box highlights the 'Start' button next to this application. Below the application table is a 'Resource Information' table showing system metrics.

Application Name	Installed on	Status	License
Google Cloud Print for iR-ADVANCE-i-SENSYS/imagePRESS	3 0 0 67	18/11 2015 Installed	Start Uninstall Unnecessary

Resource Name	Amount Used	Remaining	Percent Used
Storage	659944 KB	388632 KB	63%
Memory	15400 KB	115672 KB	12%
Threads	62	194	24%
Sockets	18	238	7%
File Descriptors	80	176	31%

Figure 5 - Click the Start button

Click the **Start** button next to Google Cloud Print for iR ADVANCE, i-SENSYS, imagePRESS MEAP application. Once it has successfully started the “Status” will change to “Started”.

Chapter 3: Google Cloud Print Registration

This chapter describes how to register the MEAP device as Google Cloud Print ready printer.

Chapter 3: Google Cloud Print Registration 16

Google Cloud Print for iR ADVANCE, i-SENSYS, imagePRESS MEAP Application	17
Google Cloud Print Registration.....	17
Google Cloud Print Unregistration.....	19
Replenish the Google Certificate.....	20
Language Support	22
Frequently Asked Questions	23

Google Cloud Print for iR ADVANCE, i-SENSYS, imagePRESS MEAP Application

The MEAP device can be registered as a Google Cloud Print ready printer using a web servlet interface provided by the Google Cloud Print for iR ADVANCE, i-SENSYS MEAP, imagePRESS application.

Google Cloud Print Registration

To register the MEAP device as Google Cloud Print ready printer, please take the following steps:

1. Install and start the Google Cloud Print for iR ADVANCE, i-SENSYS, imagePRESS MEAP application
2. Access the web servlet interface provided by the application via the URL shown below. The [device ip address] is the ip address of the host iR ADVANCE, i-SENSYS, imagePRESS device.

[https://\[device ip address\]:8443/gcp](https://[device ip address]:8443/gcp)

The servlet displays the Google Cloud Print printer service, with its registration status and a registration button.

Please note that the printer name is editable. The user can type a personal preferred name for it.

Please note that the application will gather anonymous usage data unless that option is unticked.



Figure 20 – Printer registration page

3. If the device is not registered as Google Cloud ready printer, then press the Register button. The Google Cloud Print for iR ADVANCE, i-SENSYS, imagePRESS servlet page will be automatically forwarded to the Google account page, and will require the user to input a valid Gmail address and password.

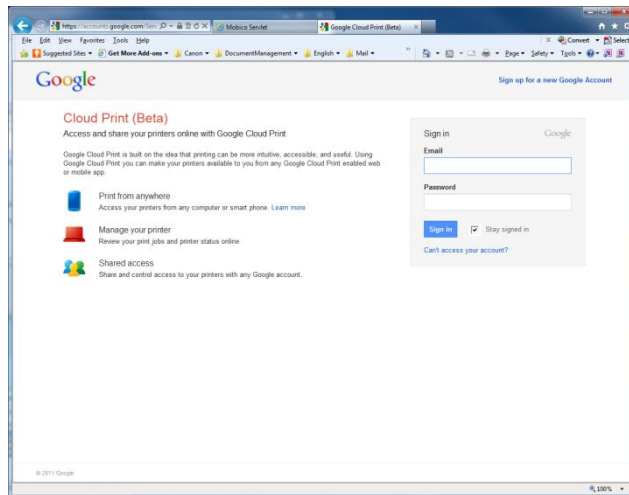


Figure 21 – Google user login

4. User inputs valid user information, which should be a valid Google account and clicks sign in.
5. User clicks “Finish printer registration” to complete the printer registration.

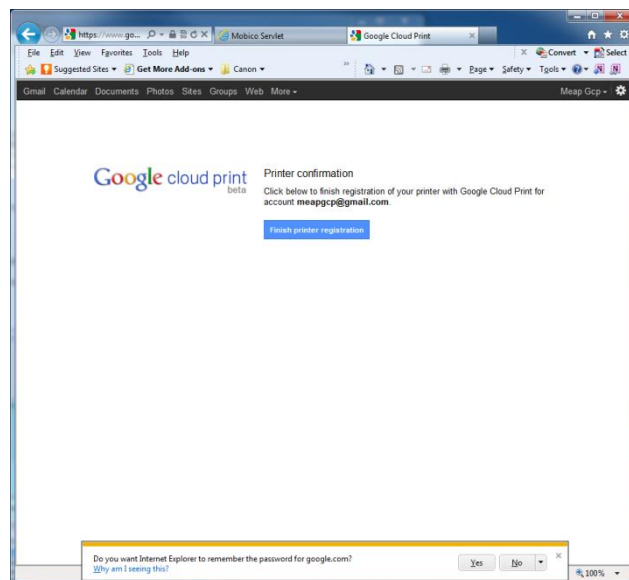


Figure 22 – Finish printer registration

After successful registration, Google Cloud Print management page will display the registered printer.

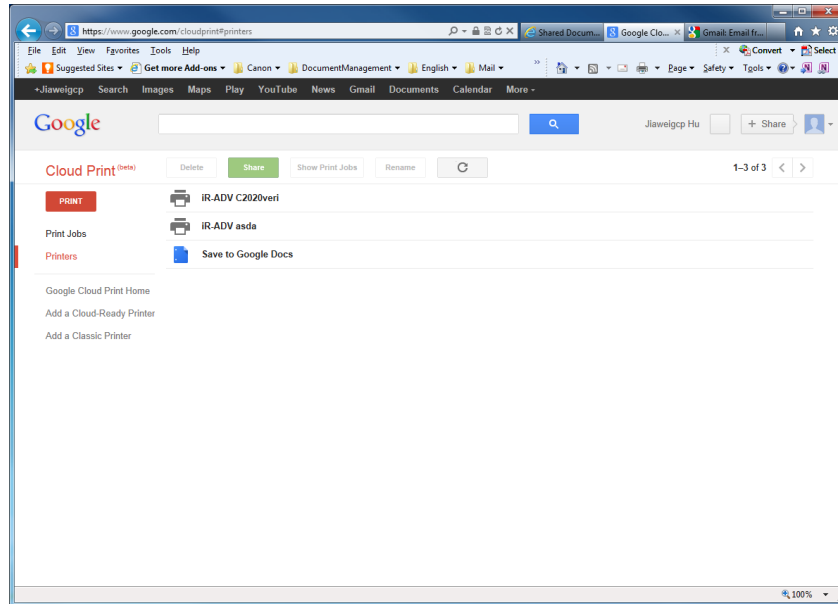


Figure 23 – Registered Google Cloud Ready printers

After successful registration, the service is started. The servlet page, [https://\[device ip address\]:8443/gcp](https://[device ip address]:8443/gcp), will be updated to reflect the service status and will display some service properties, including printer name and registered user email address.

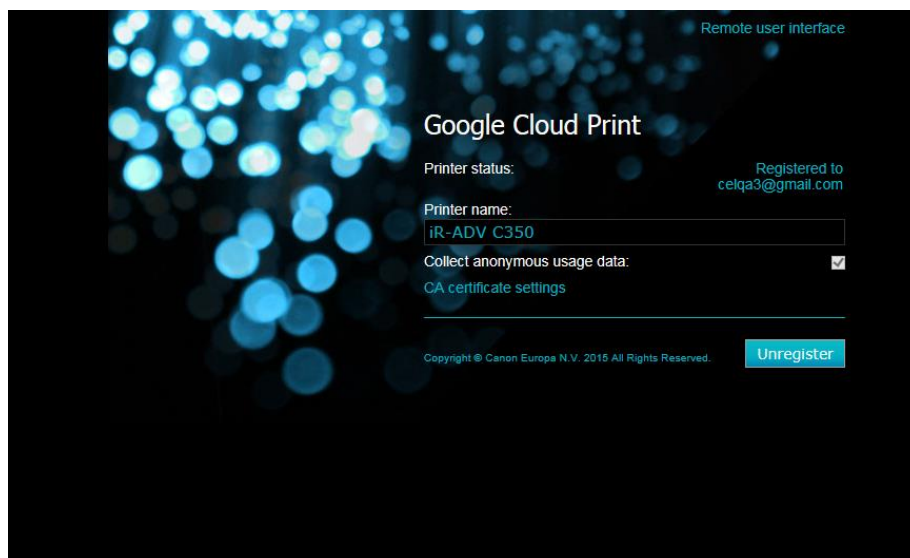


Figure 24 – Registration successful page

Google Cloud Print Unregistration

To un-register the MEAP device as Google Cloud Print ready printer, please take the following steps:

Access the web servlet interface provided by the application via the URL shown below. The [device ip address] is the ip address of the host iR ADVANCE, i-SENSYS, imagePRESS device.

[https://\[device ip address\]:8443/gcp](https://[device ip address]:8443/gcp)

1. Press the **Unregister** button.

Replenish the Google Certificate

The application is delivered with a valid Google Certificate. If Google issue a new certificate or the certificate expires then the following steps need to be followed.

Download a new Certificate:

1. To download a new certificate, go to the following web site:
<http://www.geotrust.com/resources/root-certificates/index.html>
2. Download the following certificate: Root 1 - Equifax Secure Certificate Authority and save it to the Desktop. The file name is **Equifax_Secure_Certificate_Authority.pem**

Convert the Certificate:

3. To convert the certificate to the .cer format, open the Certificates snap in the Microsoft Management Console (MMC). **Start > Run > MMC**
4. Go to **File > Add or Remove Snap-ins**
5. Choose Certificates and click **Add**
6. When prompted choose **Computer Account**, click **Next** and choose **Local Computer**. Click **Finish** and **OK** to close the **Add or Remove Snap-ins** dialog.
7. In the console, click **Certificates** under the Console Root tree. Choose **Trusted Root Certification Authorities**.
8. Right click on **Certificates** in the Object Type window and choose **All Tasks > Import**
9. Follow the **Certificate File Import Wizard**. Browse to the **Equifax_Secure_Certificate_Authority.pem** file downloaded previously and click **Next**
10. Ensure that the **“Place all certs in the following store”** radio button is selected and check that the **Certificate Store** is **“Trusted Root Certification Authorities”**. Click **Next** then **Finish**.
11. In the list of certificates, right click the certificate that was just imported (Equifax Secure Certificate Authority) and choose **All Tasks > Export**.
12. Follow the **Certificate File Export wizard**. Choose the **DER encoded binary X.509 (.CER)** format and click next
13. Specify Equifax as the filename. Click **Next > Finish**

Install the new Certificate:

14. Access the web servlet interface, [https://\[device ip address\]:8443/gcp](https://[device ip address]:8443/gcp), provided by the application. The [device ip address] is the ip address of the host iR ADVANCE, i-SENSYS, imagePRESS device.

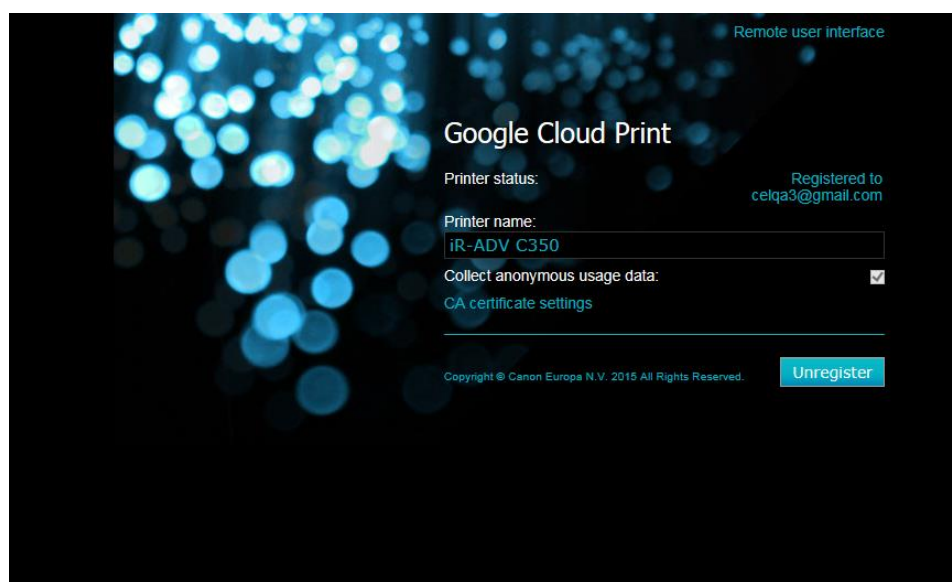


Figure 25 – GCP Interface page

15. Click on CA certificate settings. The following screen display will be shown.

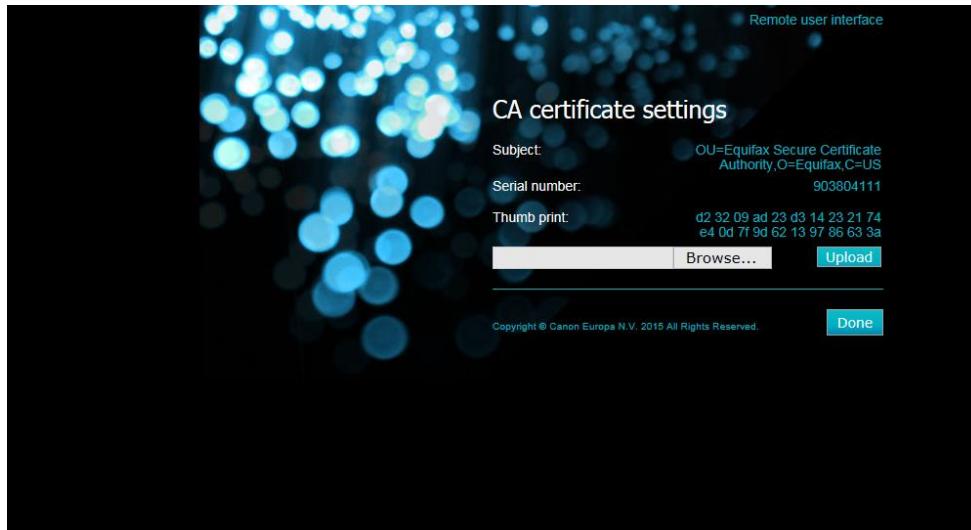


Figure 26 –Certificate settings page

16. Browse to the certificate exported above
17. Click **Upload**
18. Click **Done**

Language Support

The application includes the following languages:

- English
- French
- Italian
- German
- Spanish

Frequently Asked Questions

The device keeps asking me to choose a paper size when I print my documents. Why is this and how can I resolve it?

There are situations where the device default paper size is different to the paper size of the document you wish to print. For example, if the device default paper size is A4 and the document paper size is letter, the document will be held at printing and the device will ask the user to choose a paper tray for printing. To force the device to auto-select a paper size, do the following:

1. Enter the device RUI by accessing [http://\[device ip address\]:8000/](http://[device ip address]:8000/) where [device ip address] is the IP address of the device you wish to access.
2. Click **Settings/Registration**.
3. Under Function Settings, click **Printer**.
4. Click **Custom Settings**.
5. Make sure **Paper Size Override** is checked and click **OK**.

Why are my documents stuck in the print queue?

There may be a situation that once a document is in a print queue, further documents cannot be printed. This can be caused by the queued document not being valid anymore.

To solve this problem, one tip we can give here is

1. Enter google cloud print management page at <https://www.google.com/cloudprint/manage.html>
2. Login in as valid user
3. Click **Print Jobs** and delete all the queued jobs
4. Re-start the device

More tips are provided in the Google Cloud Print help page:
<https://support.google.com/cloudprint/?hl=en#2541858>

How can I print a document that has different paper sizes in it?

To be able to print a document with various sizes, **Enlarge/Reduce to Fit Size** and **Enlarge Print Area** need to be enabled. The following steps show how to enable them.

1. Enter the device RUI by accessing [http://\[device ip address\]:8000/](http://[device ip address]:8000/) where [device ip address] is the IP address of the device you wish to access.
2. Click **Settings/Registration**.
3. Under Function Settings, click **Printer**.
4. Click **PDF**.
5. Make sure **Enlarge/Reduce to Fit Size** and **Enlarge Print Area** are checked and click **OK**.

How can I share a Google Cloud Ready Printer?

After the printer is registered as Google Cloud Ready printer, the administrator can share the printer with other users through Google cloud print management page at <https://www.google.com/cloudprint/manage.html>, (Figure 23).

From the printer list, select the printer to share and click the share button. A dialog will appear for user to share the printer.

I want to replace my printer. How do I transfer my Google Cloud Print settings?

On devices that support it, the configuration of Google Cloud Print for iR ADVANCE, i-SENSYS, imagePRESS is held on the devices' MEAP setting information. MEAP setting information can be extracted from one device and imported into another using the DAM plugin 2.0.2 which runs on the Canon iWMC 3.4.0 web application and higher.

The plugin, the web application and their documentation are available on Canon's download site: <https://software.canon-europe.com>.

Assuming both devices are managed with iWMC and DAM, MEAP setting information can be transferred from one to another by carrying out the following steps:

1. Stop the Google Cloud Print for iR ADVANCE, i-SENSYS and imagePRESS MEAP application on the original device using iWMC or SMS, without stopping the Google Cloud Print service from the configuration page,
2. Export the MEAP setting information from the original device using DAM. The target for retrieval is **MEAP application setting information** only. Select Google Cloud Print for iR ADVANCE, i-SENSYS as the application,
3. Import the saved settings onto the replacement device, again using DAM,
4. Start the Google Cloud Print for iR ADVANCE, i-SENSYS and imagePRESS MEAP application using iWMC or SMS on the replacement device. There is no need to configure it as it will automatically use the settings you have just imported,
5. Delete the MEAP setting information on the original device using DAM,
6. Remove the Google Cloud Print for iR ADVANCE, i-SENSYS and imagePRESS MEAP application from the original device using iWMC or SMS.

They are several points worth noting:

1. Both devices must support MEAP application settings. This excludes the iR ADVANCE 20xx series,
2. Only the MEAP setting information of Google Cloud Print for iR ADVANCE, i-SENSYS, imagePRESS is copied across to the replacement device, so this procedure should have no impact on other MEAP applications on either of the devices,
3. This procedure should be used in order to transfer settings from one device to another, not to copy them.

Glossary of Terms

Term	Definition
CDS	Content Delivery System
CEL	Canon Europe Limited
DAM	Device Application Management
GCP	Google Cloud Print
iR ADVANCE	Brand name for Canon MFPs.
i-SENSYS	Brand name for Canon LBPs.
imagePRESS	Brand name for Canon MFPs.
iWMC	iW Management Console
LAN	License Access Number
LBP	Canon Laser Beam Printer.
EULA	End User License Agreement. The terms under which an end user agrees to use the software.
MEAP	Multifunctional Embedded Application Platform. A platform for running Java based application on a Canon MFP.
MFP	Multifunctional Peripheral. A device that offers printing, scanning and other document based services.
MMC	Microsoft Management Console
SMS	Service Management Service. A web portal for installing MEAP applications on an MFP/LBP.
SSL	Secure Sockets Layer
RUI	Remote User Interface
URL	Uniform Resource Locator