

ShareLink 200 N • Setup Guide

This guide provides instructions for installing and connecting the Extron ShareLink 200 N Collaboration Gateway – Network Version. The ShareLink 200 N allows anyone to present content wirelessly from a personal device—such as a PC, laptop, smartphone, or tablet—onto a display. It is compatible with Windows® and Mac® OS X® computers, as well as Android™ and Apple® smartphones and tablets.

The ShareLink 200 N includes a Gigabit Ethernet port for a high-speed network connection. It is designed to use an existing wireless network for simplified integration into the facility's IT infrastructure. Users connect to the room's wireless access point (WAP) through a Wi-Fi connection to access the ShareLink 200 N. This network-only version provides the same user experience as the wireless model.

Mounting

The ShareLink 200 N can be placed on a desktop or tabletop using the included rubber feet, or mounted to a wall using the included wall mount kit. Rack and furniture mounting options are also available. See the *ShareLink 200 N User Guide*, available at www.extron.com, for mounting options and instructions.

Cabling

Rear Panel Features and Cabling

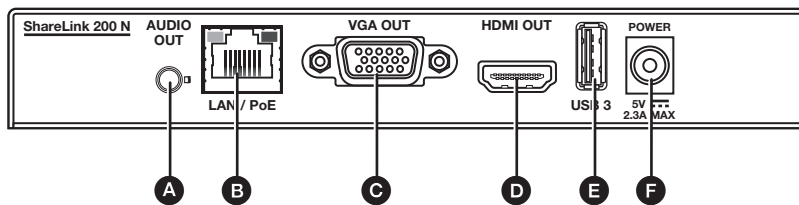


Figure 1. ShareLink 200 N Rear Panel

- A Audio output** — (Optional) Connect a 3.5 mm audio output cable between this female audio jack and the audio input of a display or audio amplifier.
- B RJ-45 connector** — Use an Ethernet cable to connect a network switch, hub, router, or PC to this female RJ-45 connector.
- C VGA output** — (Optional) Connect a VGA display device into this female VGA connector.
- D HDMI output** — Connect an HDMI display device into this female HDMI connector.
- E USB port** — (Optional) Connect a USB flash drive to present documents, photos, videos, or audio files using the ShareLink 200 USB Player feature (see [figure 3](#), ③, on the next page).
- F Power input** — Connect the included power supply to the power input.

Front Panel Features and Cabling

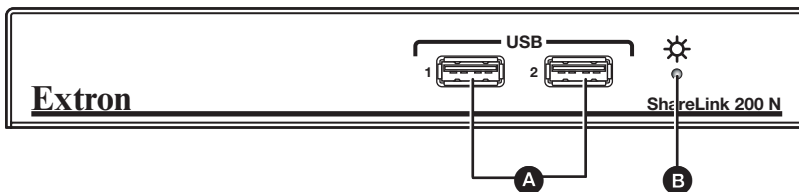


Figure 2. ShareLink 200 N Front Panel

- A USB ports** — Connect a USB keyboard or mouse to set up and control the ShareLink 200 N, and to use the Whiteboard feature (see [figure 3](#), ②, on the next page).
- B Power LED** — Lights when the unit is powered on.

ShareLink 200 N • Setup Guide (Continued)

Setting Up the Standby Screen

Once the ShareLink 200 N is connected and powered on, the default standby screen appears on the display:

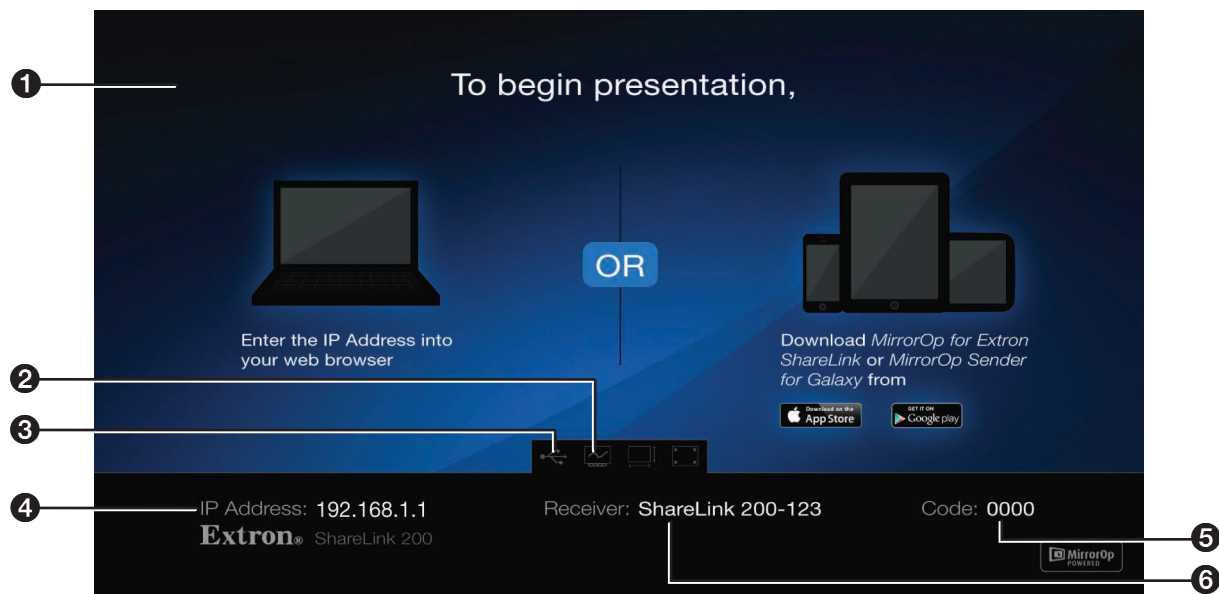


Figure 3. ShareLink 200 N Standby Screen

- 1 Instructional screen** — Provides instructions for starting a presentation. The background image of the instructional screen can be customized (see the *ShareLink 200 N User Guide* for instructions on changing the background image).
- 2 Whiteboard icon** — Click to use the display as a whiteboard. This feature allows the presenter to draw on a blank screen using a mouse or touchscreen (see the *ShareLink 200 N User Guide* for instructions).
- 3 USB Player icon** — Click to access the USB Player. This feature allows the presenter to access photos, videos, audio files, and documents directly from the connected USB flash drive (see the *ShareLink 200 N User Guide* for instructions).
- 4 IP Address** — Use this IP address to identify and access the ShareLink 200 N during connection.
- 5 Code** — Use this code to access the ShareLink 200 N through the software (see [Running the Software and Connecting to the ShareLink 200 N](#) on the next page). This code can be customized or disabled (see the *ShareLink 200 N User Guide* for instructions).
- 6 Receiver** — Use this hostname to identify and access the ShareLink 200 N during connection.

Operation Using a Computer

Connecting a Computer to the ShareLink 200 N

A computer can be connected to the ShareLink 200 N wirelessly through an external wireless access point (WAP), or wired through a network device. See the instructions below for your preferred connection method.

Connecting through an External WAP

1. Ensure that the external WAP and the ShareLink 200 N are wired to the same network.
2. Ensure that the ShareLink 200 N is powered on and that wireless network capability is enabled on your computer.
3. Open the wireless networks on your PC and connect to the external WAP.

Connecting through a Network Hub, Switch, or Router

1. Ensure that your computer is connected to the network through a hub, switch, or router.
2. Connect the RJ-45 connector of the ShareLink 200 N to the network device using an RJ-45 cable.

Using the ShareLink 200 Software

Running the Software and Connecting to the ShareLink 200 N

There are two versions of the ShareLink 200 software:

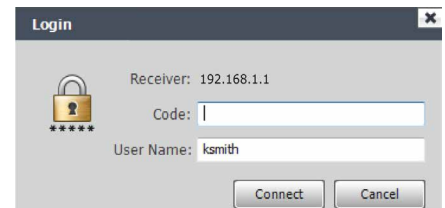
- **Lite software:** No installation required. Users can run the Lite software from the embedded Web pages without having to install the software on the PC. Since installation is not required, users do not need admin rights to run the Lite software.
- **Pro software:** Installation required. The executable software file can be downloaded from the embedded Web pages (see [figure 4](#), ④ and ⑤, on page 6) or from the Extron website (see the *ShareLink 200 N User Guide* for instructions).

NOTE: To see a list of the different Lite and Pro software features, see [figure 4](#), ④ on page 6.

The instructions below are for launching the Lite software.

1. Connect your computer to the ShareLink 200 N device, either through an external WAP or through a physical network connection. The computer and the ShareLink 200 N must be on the same network.
2. Launch your Web browser and enter the IP address of the ShareLink 200 N in the browser (see [figure 3](#), ④ on the previous page for the IP address). The ShareLink 200 landing page ([figure 4](#), page 6) appears.
3. Click **Windows** or **Mac** (depending on your operating system) to launch the software.
4. Follow the instructions on the Web browser to run the the executable ShareLink 200 software file. When the Lite software opens, it automatically attempts to connect to your ShareLink receiver.
5. If the Login dialog box opens (as shown at right), enter the login code into the **Code** field and click **Connect** (see [figure 3](#), ⑤, on the previous page for the login code).

When a connection is established, the software window opens. This window has two sections: **Share my Screen** tab (see Presenting the Computer Screen, below), and the **Software menu** (see Using the Software Menu, below).

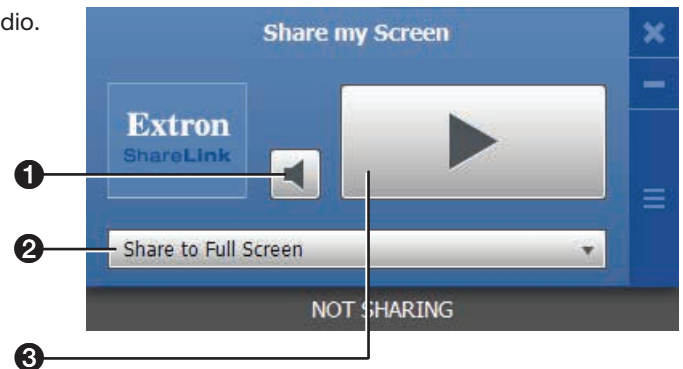
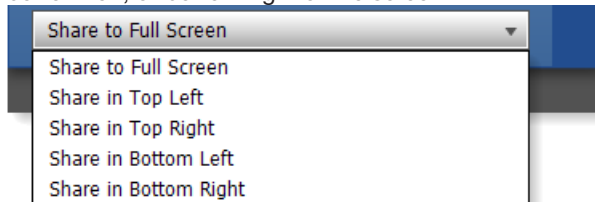


Presenting the Computer Screen (Share my Screen Tab)

Use the **Share my Screen** tab to present your computer screen on the display device.

- ① **Mute button** — Click to mute or unmute the source device audio.

- ② **Drop-down list** — Click to display the presentation options shown below. The computer screen can be displayed full screen (default), or in a quadrant on the top left, top right, bottom left, or bottom right of the screen.

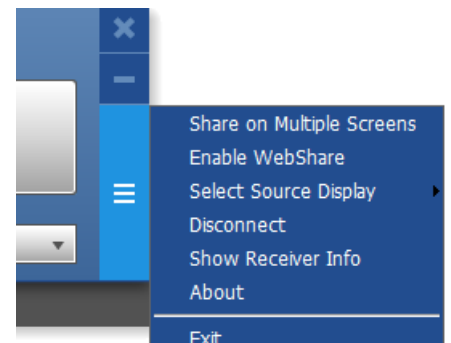


- ③ **Play button** — Click to display the screen as specified in the drop-down list. The button changes to a **Stop** button, which can be clicked to stop displaying the screen. "Not Sharing" changes to "Sharing" at the bottom of the control screen.

Using the Software Menu

Click the button on the bottom right side of the software window to open the **Software menu**. This menu includes the following options:

- **Share on Multiple Screens** — Allows the computer screen or media file to be shared on up to four displays connected to other ShareLink receivers (see the *ShareLink 200 N User Guide* for instructions).
- **Enable WebShare** — Click to enable WebShare, which allows your computer screen to be shared to connected devices during a presentation (see [Using Webshare to Watch a Presentation](#) on page 6 for instructions).
- **Select Source Display** — See the *ShareLink 200 N User Guide* for details.
- **Disconnect** — Click to disconnect from any connected receivers.
- **Show Receiver Info** — See the *ShareLink 200 N User Guide* for details.
- **About** — Click to see the ShareLink 200 software version number.
- **Exit** — Click to exit the software menu.



ShareLink 200 N • Setup Guide (Continued)

Operation Using a Mobile Device

Two mobile apps can be used with the ShareLink 200 N:

- **MirrorOp for Extron ShareLink** (compatible with Android and Apple devices) allows you to present photos, documents, Web pages, device screenshots, and the device camera (see instructions below).
- **MirrorOp Sender for Galaxy** (compatible with Samsung® Galaxy devices only) allows you to mirror your mobile device screen onto the display (see **MirrorOp Sender for Galaxy** on the next page).

MirrorOp for Extron ShareLink App

Downloading MirrorOp for Extron ShareLink App

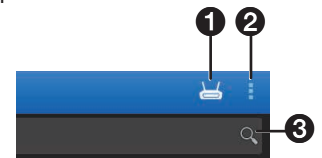
The MirrorOp mobile app is supported by Android phones and tablets, iPad®, and iPhone®. Follow these steps to download the app:


1. Open the Google Play™ app store on your Android device, or the App StoreSM on your Apple mobile device.
2. Search for MirrorOp for Extron ShareLink.
3. Install the app on your mobile device.

Connecting to a Receiver

Follow these steps to connect to the ShareLink 200 N using the app:

1. Ensure that the ShareLink is powered on and connected to the network.
2. Connect your mobile device to an external WAP that is on the same network as the ShareLink. Ensure that the external WAP and the ShareLink are wired to the same network.
3. Open MirrorOp and press the receiver icon on the top right (see ❶ at right) to open the receiver selection window.
4. Select your ShareLink receiver from the discovered receivers list. To refresh the list, drag down and release the list. You may also search for a receiver as follows:
 - If the ShareLink receiver is on the same network and subnet, you can search for it by entering the SSID or IP address in the search bar (❸).
 - If the ShareLink receiver is on a different subnet but on the same network, press the button next to the receiver icon (❷) and enter the IP address manually.



NOTE: The receiver icon turns green () and the main menu appears when the device is connected to a receiver.

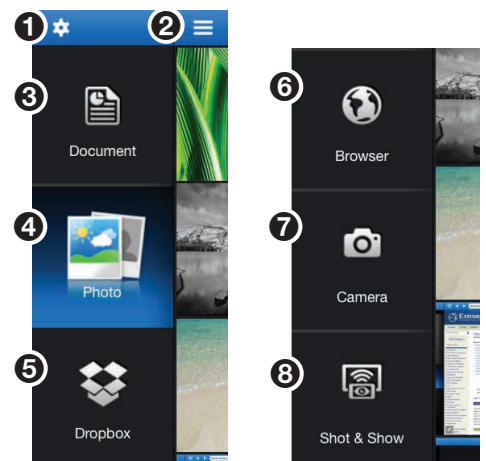
Main Menu Overview

NOTE: The image below shows the mobile app layout for tablets. The layout is arranged differently for smaller devices, such as phones.

The main menu displays the following options:

- ❶ **Settings button** – Configure app settings
- ❷ **Menu button** – Tap to hide or open the menu
- ❸ **Document button** – Present documents from the device storage (see **Presenting Documents** on the next page)
- ❹ **Photo button** – Present photos from the device storage
- ❺ **Dropbox button** – Present documents and photos from a Dropbox account
- ❻ **Browser button** – Present Web pages using this built-in internet browser
- ❼ **Camera button** – Present the mobile device camera
- ❽ **Shot & Show button** – Present mobile device screenshots

NOTE: Instructions for **Presenting Documents** are shown on the next page. See the *ShareLink 200 N User Guide* for details on all other features.



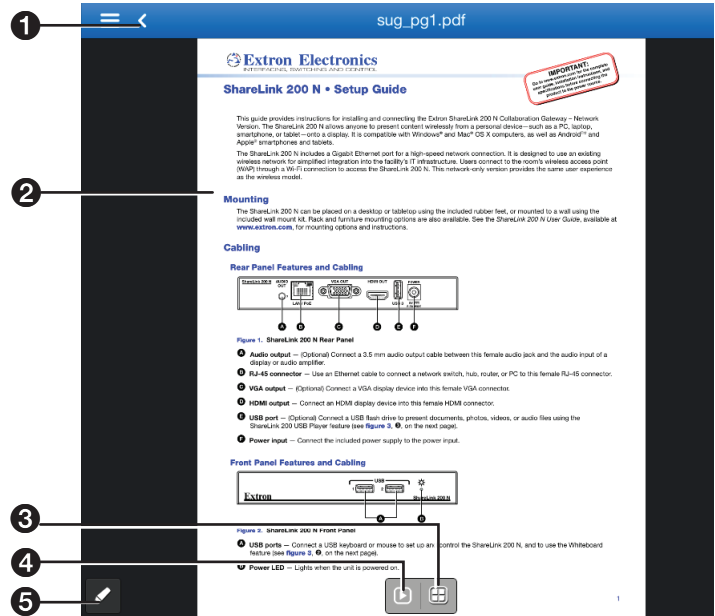
Presenting Documents

To present documents from the device storage:

1. Select **Document** on the main menu. A list of folders containing documents appears.
2. Select the folder containing the file you wish to present.
3. Select the desired file from the folder. The document view screen opens as shown below.
4. Select the **Play** button (see 4 below) to begin presenting the document or photo. The **Play** button becomes a **Stop** button, which can be pressed to stop the presentation.



- 1 **Back button** – Exit document and return to the previous screen.
- 2 **Document view screen** – Displays the section shown during a presentation.
- 3 **Quadrant view button** – Choose whether to show the document full-screen or on a quadrant on the display device (top left, top right, bottom left, or bottom right) (see the *ShareLink 200 N User Guide* for details).
- 4 **Play button** – Press to start or stop presentation.
- 5 **Annotation tool** – Allows the presenter to draw anywhere on the document screen (see the *ShareLink 200 N User Guide* for details).



MirrorOp Sender for Galaxy

Downloading MirrorOp Sender for Galaxy

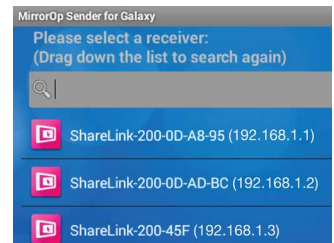
This app is supported by Samsung Galaxy phones and tablets. Follow these steps to download the app:

1. Open the Google Play app store on your device.
2. Search for MirrorOp Sender for Galaxy.
3. Install the app on your mobile device.

Using MirrorOp Sender for Galaxy

1. Ensure that the ShareLink 200 N is powered on and connected to the network.
2. Connect your device to the ShareLink through Wi-Fi (see step 2 of **Connecting to a Receiver** on the previous page).
3. Open MirrorOp Sender. The discovered receivers list appears as shown at right.
4. Select your ShareLink receiver from the discovered receivers list.

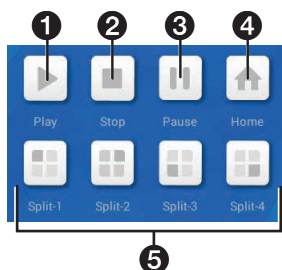
NOTE: To refresh the list, drag down and release the list. You may also search for the receiver by entering the hostname in the search bar.



The login screen appears after a receiver is selected.

5. If the login code is activated, enter the login code shown on the standby screen (figure 3, page 2) and press **Connect**. After login, the main menu opens as shown below.

The main menu has the following options:



- 1 **Play button** – Press to begin sharing your screen.
- 2 **Stop button** – Press to stop sharing your screen.
- 3 **Pause button** – Press to pause or unpause screen sharing. This allows the presenter to navigate through the mobile device while the menu screen remains on the display device.
- 4 **Home button** – Press to go to the mobile device home screen.
- 5 **Split buttons** – Choose one of the Split buttons to share your screen on the top left, top right, bottom left, or bottom right of the display. This allows up to four users to present their screens on the display simultaneously.

ShareLink 200 N • Setup Guide (Continued)

Using the Embedded Web Pages

The ShareLink 200 Embedded Web Pages contain the following features:

- **WebShare:** Allows users to view a presentation remotely on their mobile devices or computers.
- **Moderator mode:** Allows a designated moderator to play or stop user presentations, and to choose where to display the presentations on the main screen.
- **Admin mode:** Allows a designated administrator to configure the ShareLink 200 N settings (See the *ShareLink 200 User Guide* for instructions on using the Admin pages).

Opening the Embedded Web Pages

To access the embedded Web pages, enter the ShareLink IP address (shown on the standby screen) into the Web browser.

The landing page appears on the Web browser as shown here:

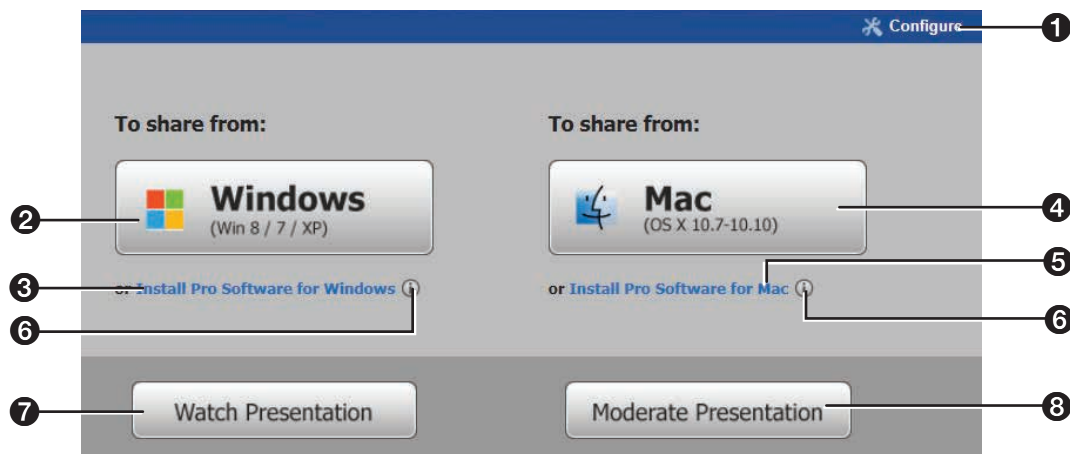


Figure 4. ShareLink 200 Landing Page

- 1 Configure** — Click to access the Admin pages and configure presentation settings (see the *ShareLink 200 N User Guide* for instructions on using the Admin pages).
- 2 Windows** — Click to run the Lite version of the ShareLink 200 software for Windows.
- 3 Install Pro Software for Windows** — Click to install the Pro version of the ShareLink 200 software for Windows (see the *ShareLink 200 N User Guide* for details).
- 4 Mac** — Click to run the Lite version of the ShareLink 200 software for Mac.
- 5 Install Pro Software for Mac** — Click to install the Pro version of the ShareLink 200 software for Mac (see the *ShareLink 200 N User Guide* for details).
- 6 Information (i)** — Click this icon to see a list of the different Lite and Pro software features.
- 7 Watch Presentation** — Click to access the WebShare feature (see Using WebShare to Watch a Presentation, below).
- 8 Moderate Presentation** — See **Using Moderator Mode** on the next page.

Using WebShare to Watch a Presentation

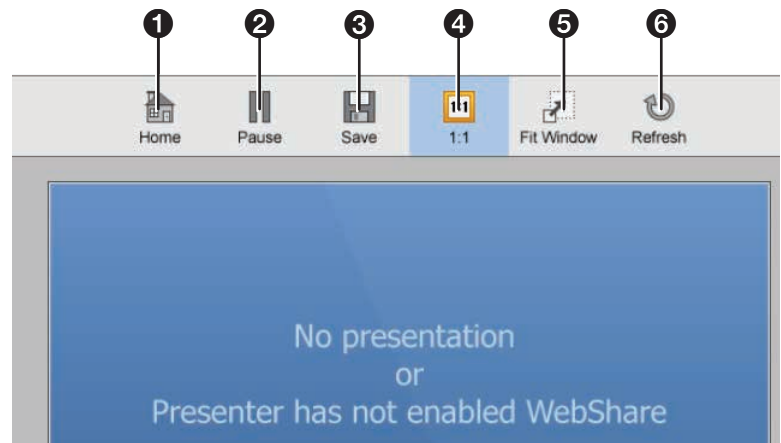
WebShare allows audience members to view a presentation on their computers or mobile devices through a Web browser. The presenter may broadcast the presentation so that the image shown on the display can be viewed remotely (see the next page for instructions).

NOTE: WebShare must be enabled on the client software or mobile app in order for the presentation to be viewed remotely by other users.

Audience members must follow these steps to watch a presentation:

1. Open a Web browser on the mobile device or computer and connect to the IP address of the ShareLink 200 N.
2. On the landing page, click **Watch Presentation**. The presentation page (shown below) opens in the Web browser.
3. Click the **1:1** button (see 4, at right) to watch the presentation.

- 1 **Home** — Click to go to the ShareLink 200 landing page.
- 2 **Pause** — Click to pause the presentation.
- 3 **Save** — Click to save the slide being presented.
- 4 **1:1** — Click to watch the presentation.
- 5 **Fit Window** — Click to fit the presentation screen to the size of the browser window.
- 6 **Refresh** — Click to refresh the presentation if necessary.



Using Moderator Mode

Moderator Mode allows a single user to control the presentation of all connected users. To moderate a presentation:

1. Click **Moderate Presentation** on the landing page. The login page appears.
2. Enter the default password (moderate) and click **Login**. This password can be changed (see the *ShareLink 200 N User Guide* for instructions). After login, the following page opens:

Figure 5. ShareLink 200 Moderator Page

- 1 **Allow control from this page only** — This option is unchecked by default, meaning that moderator control is disabled and all connected users are free to share content. Check the box to allow control to the moderator only.

NOTE: Individual users can choose to stop showing their screen by selecting the stop button from the client software on their device.

- 2 **Connected User** — This column lists the user names of all users connected to the ShareLink.
- 3 **Share Control** — This column allows the moderator to do the following:
 - **Play or stop a user presentation:** Click **Play** (▶) next to the Connected User that you wish to present. The row becomes green and the **Play** button becomes a **Stop** button. Click the **Stop** button to stop sharing content.
 - **Choose where on the screen to display the presentation** (full screen, top left, top right, bottom left, or bottom right): Click the drop-down list and make a selection. **Share to Full Screen** is selected by default.
- 4 **IP Address** — This column lists the IP address of each connected user device.

| | | | | | | | | | |
|--|--|--|--|--|---|---|---|---|--|
| Extron Headquarters +800.633.9876 Inside USA/Canada Only Extron USA - West +1.714.491.1500 +1.714.491.1517 FAX | | Extron USA - East +1.919.850.1000 +1.919.850.1001 FAX | Extron Europe +800.3987.6673 Inside Europe Only +31.33.453.4040 +31.33.453.4050 FAX | Extron Asia +65.6383.4400 +65.6383.4664 FAX | Extron Japan +81.3.3511.7655 +81.3.3511.7656 FAX | Extron China +86.21.3760.1568 +86.21.3760.1566 FAX | Extron Middle East +971.4.299.1800 +971.4.299.1880 FAX | Extron Korea +82.2.3444.1571 +82.2.3444.1575 FAX | Extron India 1800.3070.3777 (Inside India Only) +91.80.3055.3777 +91.80.3055.3737 FAX |
|--|--|--|--|--|---|---|---|---|--|