

ProTeam FreeFlex®

107499 FreeFlex Hybrid Cordless/Cordless

\$1,499

107503 FreeFlex Corded

\$599

ProTeam introduces the new standard of upright innovation, the FreeFlex battery-powered hybrid upright vacuum. A state-of-the-art Lithium Ion battery provides approximately 72-minute runtime with the option to plug into an outlet for ongoing cleaning.

Cordless cleaning improves safety and eliminates time-consuming cord management tasks for a focused clean. You will be surprised how far you can go with this latest technology by ProTeam.



Hybrid

Corded



HYBRID POWER OPTIONS



SAFETY



LONG RUNTIME

*The filtration value of ProTeam's ProLevel Filtration System in this vacuum is achieved by the use of a multi-stage filtration system, including foam filter bag housing and four-layer synthetic filter made from HEPA media, as tested per ASTM F3150.

RELATED PRODUCTS

107502 Intercept Micro Filters, 10/pk	\$27.04
107500 Replacement Battery	\$899
107501 Battery Charger	289
843108 Clog Removal Tool	9.99

107499 FreeFlex Cordless includes battery, charger and cord.
All units come equipped with one clog removal tool.

Specifications

	Cordless	Corded
Weight:	17.6 lbs./7.98 kg	13.9 lbs./6.3 kg
Handle Weight:	1.8 lbs./0.82 kg	1.4 lbs./0.64 kg
Vacuum Airflow:	53 CFM	68 CFM
Static Lift:	14 in.	25 in.
Motor:	220 W/92 VDC/2.4 A	400 W/120 VAC/ 2.4 A (low), 3.4 A (high)
Decibel:	75 dBA	75 dBA (low) 82 dBA (high)
Capacity:	3.25 qt/3 L	3.25 qt/3 L
Cord Length:	40'	40'
Battery Type:	Lithium Ion	—
Approximate Runtime:	72 mins.	—
Approximate Charge Time:	93 mins.	—
Charge Cycles:	up to 850	—
ProLevel Filtration®:	295 sq. in. total area	295 sq. in. total area

*ProLevel Filtration System with HEPA Media

captures 99.70% at 0.3-.5 microns per ASTM F3150

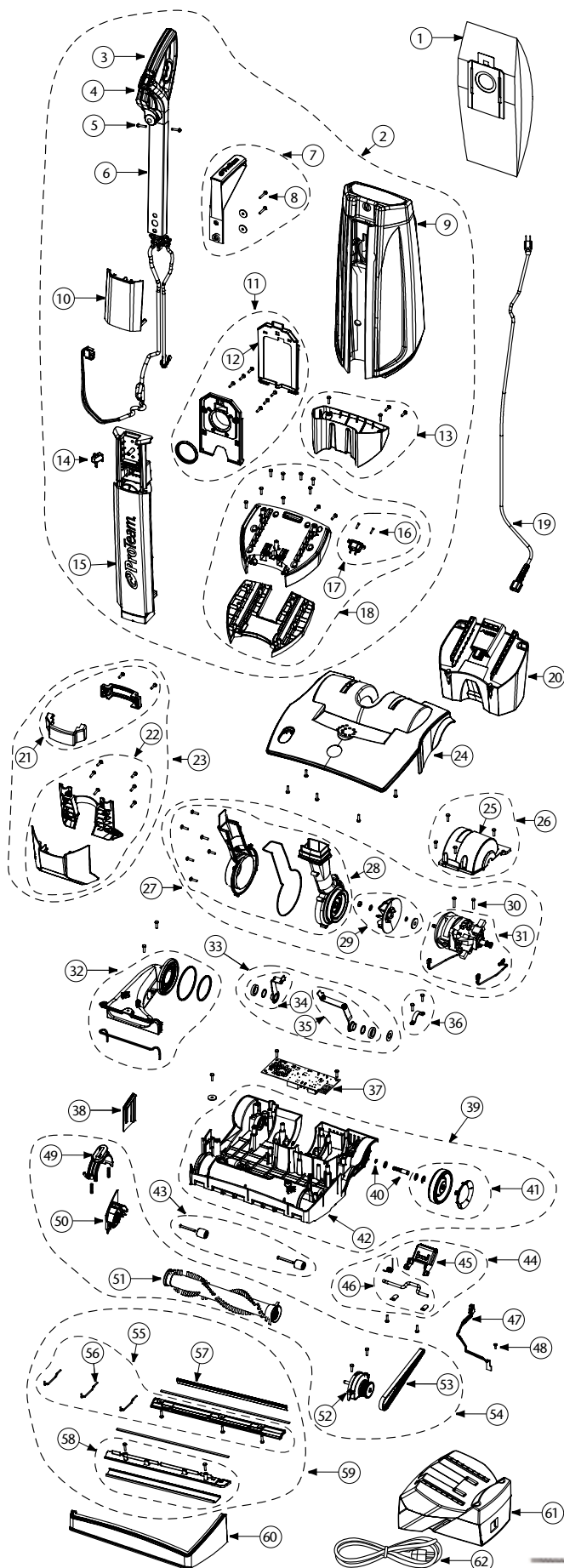
Warranty

2 years motor, battery and charger

3 years parts, labor and molded body parts (except wear items)

Specification calculations are based on average vacuum system performance.

FREEFLEX PARTS



No.	Product Name	Qty	List Price
1 107502	Four-Layer Synthetic Filter, Fits FreeFlex	10/pk	\$ 27.04
2 510657	Upper Service Assembly (includes: #3-18)	1 set	229.07
3 841322	Handle Assembly	1 ea.	34.26
4 840495	On-Off-On Switch	1 ea.	2.49
5 835348	Screw, Machine M5	1 set	2.89
6 510425	Aluminum Tube Handle	1 ea.	8.67
7 510427	Carry Handle Assembly (includes: #8)	1 set	9.23
8 835345-1	Screw M4 Pan HD	1 set	2.71
9 840386	Foam Filter Bag Housing	1 ea.	94.04
10 840414	Aluminum Handle Mount Bracket	1 ea.	6.34
11 510433	Filter Mount Brackets Assembly (includes: #12)	1 set	12.03
12 840509	Filter Mount Pivot Bracket	1 set	5.54
13 510434	Bottom Filter Plate Assembly	1 set	8.32
14 510654	Bag Switch Detect	1 ea.	6.39
15 840499	Debris Tube	1 ea.	17.38
16 840506	Screw M3 CS Pan HD	1 set	5.78
17 510430	IEC Connector Plug Assembly (includes: #16)	1 set	11.09
18 510429	Battery Mount Plates Assembly (includes: 16, 17)	1 set	26.19
19 840377	Power Cord	1 ea.	25.58
20 107500	FreeFlex Cordless Upright Replacement Battery	1 ea.	899.00
21 510428	Debris Tube Brackets Assembly	1 set	8.06
22 510431	Debris Tube Clamp Assembly	1 set	11.11
23 510655	Debris Tube Brackets (includes: 21, 22)	1 set	16.29
24 510437	Base Cover Assembly	1 ea.	28.47
25 510661	Motor Cover	1 ea.	27.77
26 510420	Motor Cover Assembly (includes: 25)	1 set	7.97
27 510664	Blower Motor (includes: 38-31)	1 set	96.82
28 510435	Blower Housing Assembly	1 set	15.93
29 510416	Blower Wheel Assembly	1 set	9.45
30 835345-1	Screw M4 Pan HD	1 set	2.71
31 510415	Motor Assembly	1 set	70.76
32 510658	Inlet Nozzle	1 set	13.67
33 510656	Pivot Bracket (includes: 34, 35)	1 set	26.92
34 510418	Right Pivot Bracket Assembly	1 set	14.01
35 510417	Left Pivot Bracket Assembly	1 set	13.86
36 510421	Pivot Bracket Clamp Assembly	1 set	3.98
37 840490	Main Control Board	1 ea.	81.83
38 840070	Side Base Upright Bumper	1 ea.	7.75
39 510662	Base with Rear Wheels (includes: 40-42)	1 set	46.67
40 510414	Rear Wheel Shaft Assembly	1 set	2.74
41 841324	Rear Wheel Assembly	1 set	6.12
42 840369	Power Nozzle Base	1 ea.	33.02
43 834363	Wheel/Axle Replacement Kit	1 set	7.61
44 510659	Foot Pedal Assembly (includes: 45, 46)	1 set	8.52
45 840475	Foot Pedal	1 ea.	6.90
46 510422	Foot Pedal Shaft Assembly	1 set	6.00
47 843009	Control Board Hall Effect Sensor	1 ea.	19.14
48 835937	Screw M3 Pan HD	1 ea.	2.43
49 510424	Brush Release Button Assembly	1 set	4.12
50 841325	Brush Removal Cover Assembly	1 ea.	7.88
51 840167	Brush Roller Assembly	1 ea.	15.47
52 841814	Clutch Assembly	1 ea.	14.83
53 841744	Belt 168XL037	1 ea.	9.04
54 510663	Drive Brush (includes: 49-53)	1 set	44.82
55 510423	Rear Base Plate Assembly (includes: 56)	1 set	4.79
56 840194	Base Wire Brace	1 set	4.13
57 840191	Squeegee Blade	1 ea.	2.35
58 841323	Front Plate Assembly	1 set	10.78
59 510660	Front Rear Plates (includes: 55-58)	1 set	18.52
60 840069	Front Base Upright Bumper	1 ea.	11.12
61 107501	FreeFlex Cordless Upright Replacement Charger	1 ea.	289.00
62 834678	Charger Cord	1 ea.	27.40
63 843108	Clog Removal Tool	1 ea.	9.99
510432	Screw / Washer Assortment (22 piece set)	1 set	5.37
510436	Gasket Assortment (5 piece set)	1 set	4.97