



ON BOARD

A round of applause for Flying Fox

Flying Fox made an immediate impression in 2019 thanks to her length of 136m, the elegant look and curvy lines. This wonder of the sea is now available for unforgettable thrills through the Monaco-based brokerage company Imperial, which acted as Owner's Representative and Build Supervisor at Lürssen shipyard.

With the courtesy of © Guillaume Plisson for Imperial









A round of applause for Flying Fox

Flying Fox is an exceptional superyacht, with an elegant look and curvy lines drawn by the expert and creative pen of designer Espen Øino. Her extraordinary size is reinforced by the dove grey colour of her hull, making her spectacular and unique.

Built at the German shipyard Lürssen, which specialises in the construction of exceptional vessels in compliance with the strictest PYC standards and offering superb craftsmanship, she made an immediate impression in 2019 thanks to her length of 136m (446'2") and impressive beam of 22.5m (73'10"), allowing her to sail on any ocean.

She has a steel hull and aluminium superstructure, and immense volumes of 9,022 GT over 6 guest decks. She can accommodate up to 36 guests in navigation (PYC-compliant) and 25 guests in night mode with 11 Double cabins (1 Master + 10 VIP, all en-suite), and ensure a level of comfort that goes beyond normal expectations for a superyacht, offering truly remarkable height on both the outside and inside.

Guests arriving on Flying Fox from the air can land in extreme privacy and rely on a state-of-the-art safety system on board as

well as two helipads, one a 14-metre pad at the bow and an 18-metre diameter pad on which a craft such as the Airbus H175 can land. The same deck can also be used for relaxation and fun by a large number of people.

The imposing decks have wide corridors for getting comfortably from the stern to the bow. While designing such large volumes is a more complicated task, it also gives the designer more freedom to express unbridled creativity.

Interior designer Mark Berryman has already worked in the past with the expert and practical owner of Flying Fox and with Espen Øino, and has come up with an amazing interior design inspired by a passionate drive towards wellness.

Luxurious and contemporary, but with a practical and relaxing layout. The inspiration is a zen-style wellness centre, with bamboo walls and marble floors.

Everything is world class, in which the natural green element, obtained with cleverly positioned real plants and trees - like ficus benjamins - works in tandem with the warm colours of the furnishings and floors, using precious woods such as bamboo, teak and oak, and precious stones such as Travertine and Jerusalem Stone. >



FLYING FOX









The fine leathers, decorations and wonderful natural light entering through the generous windows go to complete a very cosy atmosphere.

The hall on the Bridge deck truly calls out its message of welcome. It is an open lounge connected to the owner's deck to form a single expression, the height of elegance and spaciousness, with a wooden fireplace and a huge 24-seats dining table, plus comfortable lounge areas offering panoramic sea views.

Moving downstairs there are 10 VIP cabins equipped with every comfort and modern technology, also offering a large lounge area with sofas, chairs and desks found in the best suites, plus a balcony with sea view, as well as all possible lighting.

To get from one deck to another you can take the large oval spiral staircase or a semi-transparent lift with a skylight at the top, moving with the utmost comfort.

On the Owner's deck there is an inviting lounge area with a fireplace, for cooler evenings, and spaces set aside for work, with an entirely private office and conference room. There is also a private relaxation area designed for the owner only. There is a great sense of elegance in the

magnificent, private and independent Master suite, a 100sqm area that includes a private salon with fire place and a bathroom that is worthy of a luxury villa. The wellness theme is pursued further with a beauty centre included in this private area, containing a Jacuzzi from which, by opening windows, guests have a private paradise for enjoying views of the most beautiful and remote landscapes.

Flying Fox stands out for her concept of general on-board wellbeing. On Main deck aft is a 12-metre-long pool, positioned athwartships, practical for swimming and for poolside entertainment, with chat and drinks. For guests seeking a more private form of wellbeing, the 400 sq.m two-deck spa, rivalling those offered by top-quality resorts, provides invigorating and regenerating experiences, such as a sauna, hammam and an amazing Cryosauna, the first ever to be installed on a yacht. There are naturally body treatments, a massage room with water bed and rain shower, under the guidance of expert therapists, and a beauty experience focusing on face, body and hair. To keep fit there is a 90sqm-Gym containing top-of-the-range gear and personal trainers able to get guests back in shape, all aided by >



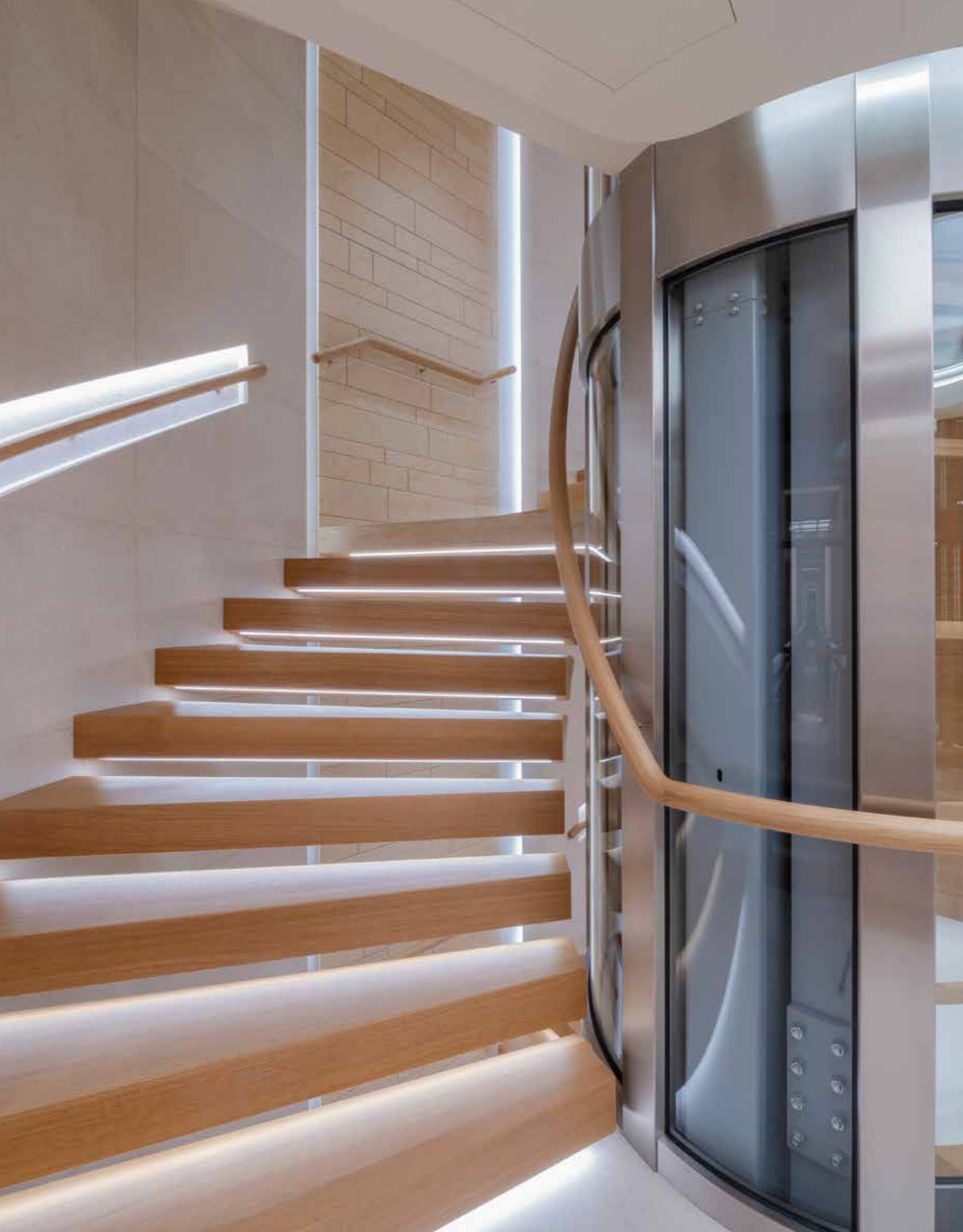












splendid sea view.

For those seeking more playful and adventurous activities, the Dive Sore is an unrivaled area on any yachts of the world, with PADI-certified instructors trained to help guests use the utmost diving equipments and experience activities such as kite surfing, jet boarding, flyboarding and hoverboarding (Frank Zapata), as well as Scuba diving to a depth of 100 metres. There is also a 3-seats decompression chamber to experience extreme conditions without danger.

Nine types of support craft are at guests' disposal for all available activities, including a Beach landing craft, a powerful Super Air Nautique Coastal and two custom limo-tenders, respectively 12.5m and 11m in length, suitable for glamorous transfers to golden beaches.

Guests' appetites are fully satisfied by the refined on-board cuisine, offering a large variety of sensorial pleasures in a practical and attractive layout for family and friends at any time of the day.

Highly qualified chefs create culinary experiences of all kinds in their external galley on the Bridge deck aft. This galley is really unique on board a superyacht, a first of a kind in its shape, and guests can

watch gourmet dishes being prepared on a Teppanyaki station, rotisserie oven, Churrasco grill and Tandoori oven.

Also on offer are traditional pizzas or simple snacks and appetisers to be savoured at the chef's table or sitting at the large 24-seat table, with a drink, in the shadow of the original and functional triangular awnings designed for functionality and aesthetics, cleverly covering the external decks and ensuring a crucial air flow and touch of style.

If guests want to watch a classic or action movie at the end of a long and intense day, an outdoor cinema can be set up on Owner's deck. If the weather does not allow it or guests want a top-of-the-range cinematic experience, there is a private cinema inside, accommodating up to 14 people in absolute comfort with interactive seats and a D Box 4D system. This cinema also include Dolby Atmos sound system, and offers a large selection of game stations such as Xbox or Playstation 4 with the latest games available. In addition, a special computer is set up on board for VR and the corresponding gears, and it can be placed on Bridge deck forward helipad.

For a megayacht of this standing, >>







the crew is naturally a crucial element. The 54 crew members, coordinated by an expert Captain, have been fully trained to offer guests an unforgettable experience, dealing with any situation that might occur anywhere in the world. The huge Flying Fox is a perfect combination of performance and luxury, with a cruising speed of 17 knots and a top speed of 20 knots, incredible speeds for such a large craft, and a sailing range of 6,500 nm. Flying Fox is now proposed as a charter craft and is the largest superyacht ever available on this market. This wonder of the sea is now available for unforgettable thrills through the Monaco-based brokerage company Imperial, which acted as Owner's Representative and Build Supervisor for the build of the yacht at Lürssen shipyard.

* * * * *

For more details, please contact:
conciierge@superyachtone.com
+44 (0) 20 3290 3707

lurssen.com
espenocino.com
markberrymandesign.com

imperial-yachts.com
Eric Lepeingle
Head of Sales & Charter
+33 607 93 09 09
charter@imperial-yachts.com