

# MOBILE PHONE WATCH

MOBILE PHONE WATCH

# Contents

<b>I.Basic knowledge</b> .....	4
1> Brief.....	4
2> Safety notice .....	4
3> Safety alert and notice .....	4
4> Battery using .....	6
5> Using notice.....	6
<b>II.Introduction to your watch mobile</b> .....	8
1> Picture induction .....	8
2> key pad .....	8
3> Screen includes three parts: .....	8
4> Dial call.....	9
5> Answer phone.....	9
6> Input switch .....	10
7> Battery charging .....	12
<b>III.Menu</b> .....	13
1> Phone book .....	14
2.> Message .....	17
(1) SMS .....	17

(2) MMS .....	17
(3) Voice mail server .....	18
(4) Broadcast Message .....	18
3> Call history .....	22
4> Settings .....	22
(1) Pen Calibration .....	22
(2) User Profiles .....	23
(3) Phone setup .....	26
(4) Call setup .....	28
(5) Network setup .....	33
(6) Security setup .....	33
(7) Restore factory settings .....	35
<b>5&gt; Multimedia</b> .....	35
(1) Organizer .....	35
(2) File manager .....	37
(3) Camera .....	37
(4) Image viewer .....	37
(5) Video Recorder .....	37
(6) Video player .....	38
(7) Audio Payer .....	38

(8) Sound Recorder .....	38
(9) FM Radio .....	38
<b>6&gt; Network Services</b> .....	39
(1) Service Information .....	39
(2) Bluetooth .....	39
(3) WAP .....	39
(4) Data account .....	40
<b>IV. Phone book</b> .....	41
1> IP dial .....	41
2> Send MES: .....	41
3> Send MMS: .....	41
4> Browse: .....	41
<b>V. addenda</b> .....	42
1> Simple fault eliminate .....	42

# User Guide

## I、Basic knowledge

### 1.1 Brief

To keep your mobile phone in good using condition, please read this manual carefully before you use it.

This mobile is the perfect production of personality design and delicate craftsmanship, having flown line figure, comfortable touch feel, perfect combination of convenient hand writing function and keypad, colorful touch screen, dulcet ring tones, cartoon incoming call icons, huge manage function of files, fashionable camera and video function, long time voice record function, MP3/MP4 players, supports MMS, WAP. We are sure our watches mobile will bring convenience and fun to your work and life.

### 1.2 Safety notice

★ If your phone is lost or theft, please notice telecom to ban using of this phone and SIM card. (This function needs the support of network), which can avoid economic loss caused by imitating calls.

★ To avoid misuse of your phone, please take safety measure, such as Setting SIM card and PIN No.

Setting phone PIN

### 1.3 Safety alert and notice

Please do not use your mobile phone watch when you are driving. If have to dial,

please use hand free accessories. Please remember, it is illegal in some countries to having call when driving.

Mobile phone may cause interference to radio devices, using phone on plane is illegal and dangerous, please make sure keep your phone power off during flight.

Power off within dangerous area

At gas station, oil digging plant, chemical plant or explosion spot, please abide by relevant law or rules, and power off your phone.

Abide by special regulations

Abide by special regulation, and keep your phone power off at phone taboo places or any place may cause interference or danger (such as hospital)

Interference

Any phone may have talk quality interference by radio wave.

Specialization service

The mobile phone watch must be installed and maintained by professionals; unauthorized installing and repairing may cause danger, and will lead to free maintenance service.

Fittings and battery

Only use the fittings and battery approved by suppliers

Use properly

Emergency call

Make sure your phone is power on and at service, input emergency call NO, (such as 112 and others), dial to call, tell your position and make a brief of status, and please do not terminate conversation without permission.

Note: As any other mobiles, for the reason of network or signal transfer status

may not support all the functions of this mobile. Certain network may even not support 112 emergency calls. So you can not depend on your mobiles totally when there is important communications, (such as medical first aid). Please contact local network supplier for information and check.

#### 1.4 Battery using

(1) You need to completely charge the battery before use, for a new product, it's better that charge the battery to 14 hours at beginning times, so the battery can achieve full performance.

(2) When you charge the battery, the mobile watch will have a little fever, but it is installed temperature protection to control the change of temperature and the charge, usually you need charge for 4 hours.

(3) When the battery volum is too low, the screen will show "electricity low" to remind for charge.

Notice: the battery's functions ( such as standby time and talk time) is different when working due to operation fashion and network system

#### 1.5 Using notice

Your mobile watch is nice design and delicate craftsmanship, it should be protected carefully. The following suggestions will help your machine serve you well for many years.

(1) Don't touch screen with sharp objects and keep screen clean. Never use the product when it is damaged. It is normal if the screen startup slowly under low temperature.

(2) Keep your mobile watch other parts and fittings beyond the reach of children.

(3) Please note: you must avoid to spatter water into the mobile watch or on its body , if it happen , and not work , it is not covered in the standard warranty policy.

Keep the product dry, keep away from rain, moisture and liquid which may contain corrosive matters, if the mobile is wetted, please take out battery and repute it in after complete drying.

(4) Do not use or store the product at dusty places in order to avoid its parts be damaged?

(5) Do not put the product at hot places. High temperature will shorten the life of electronic circuit board.

(6) Do not put the product at cold places, otherwise the mobile will have humidity and damage electronic circuit board.

(7) Do not throw, beat or vibrate your mobile which will damage the electronic circuit board and structure.

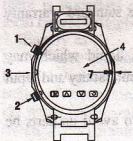
(8) Do not use corrosive chemical product, cleanser or scour to clean the watch mobile. Please dip little suds with a soft towel to clean.

(9) If your product or accessories could not work, please send to professional services station, Professionals there will provide maintain service for you.



## II. Introduction to your watch mobile

### 1>picture induction



1: On / off button 2: OK key 3: USB interface 4: Touch Screen 5: Camera 6: Back cover arrowhead mark(point to camera is turn on,30 degree is turn off) 7: Back cover contraposition

### 2> Key pad

Power key: Press this key to turn on or turn off the mobile watch, Return to the standby mode by pressing this key under the turning-on status.

Confirmation key: perform the words at down left on screen bottom line.

### 3>Screen includes three parts:

The top row shows a variety of icons, said received signal strength and battery status of remaining power, etc..

### ☑GPRS function

### ☑ MMS

### ☑ Internet Signal

### ☑ Earphone

### ☑ Lock key is open

### ☑ Lock key is close

### ☑ bluetooth

### ☑ Alarm

### ☑ common mode

### ☑ Missed call

### ☑ Having SMS or MMS full

### ☑ Battery volume

(2) Middle area indicate messages, indication and other input content, including numbers, words and dynamic icons.

(3) Bottom area has two divisions: two icons and four function icons.

☑ OK ☑ uppage ☑ downpage ☑ back

### 4> Dial call

Touch **SEND** icon with touch pen at standby status ,then show the number simulate keypad, use touch pen to press number, key in area no. and tell No., then press confirm key to dial call, press On-off key or press Cancel on the screen to end call.

### 5> Answer phone

Press "confirmation key" to answer.

Press "On-off key" to stop a call.

Press "On-off key" to refuse a call.

Press "Option" to "Pause, stop, new call, phone book, message, voice record, mute/restore, double music multi frequency and so on.

### 6> Input switch

This mobile support hand write, spell, number, English, capital English input, and could be used in editing phonebook, message, memo, file management, greetings and other file editing.

#### (1) Input icon

After enter into editing windows (include editing phonebook, message, and memo), the icons are following:

Spell input: "拼"

Number: "123"

English capital: "ABC"

English: "abs"


#### (2) Hand writes input

Handwrite input in an important input of this mobile, this mobile also take advantage of words identity technology, could input Chinese, English and number

quickly and could be used in all kinds of words input function.

Click ABC to switch capital English when input English


Need to ascertain the type importing characters before taking notes by oneself importing characters first, come point note to ascertain the characters type being going to import Chinese character, English and figure in screen. The cursor instructs current entering location. Use touch screen. The cursor instructs current entering location. Use touch screen to write witching writing area, the pause once queen screen will demonstrate the Chinese character result that the automation choice distinguishes, area display all chooses a Chinese character and in waiting for the selections character. You need to use the character arriving at if the screen demonstrates fault, can choose according to waiting for selections character area replace. Mobile telephone supports many times Chinese character to associate a function, strike a screen after hitting the target all choosing a character, meeting demonstrate second characters being able to be composed of often-used words with the first characters. Direct point strikes second characters, is ok to be imported to cursor position.

(3) Spell input Choose "Pin" and press icon , the simulate keypad will show on screen.


Can use phonetic transcription method to import a Chinese character. According to


what is needed entering character phonetic transcription order, point note simulates the corresponding keyboard middle letter, the letter or letter combination being imported appears in phonetic transcription display area, the corresponding Chinese character appears to choose character area in waiting. Find the what be needed a Chinese character display go queen, touch screen pen point note is a character's turn, current cursor location gets along in being a character's turn to will be imported to importing a fence. Phonetic transcription is imported holding out associating a function.

#### (4) Number input

Choose "123" and press the icon , then show the simulate keypad and number sign, press number and input at Insert.

#### (5) English input

Choose "abs" or "ABC" and press the icon , then simulate screen will be

shown on screen, use touch pen to input English letter or word. Click ABC  to switch Capital status.

#### 7> Battery charging

The watch mobile can be charged completely at first three times after use up, so

that the battery can be up to best status.

Please run out the battery and fully charge for the first three time, that could make battery in best using condition.

#### Battery indication:

Your watch mobile can inspect and show battery status, you could see battery volume from left up screen. And the screen will show "electricity low".

#### Using USB charger function:

One end of USB connected to computer, and other end to slot of watch mobile. When charging, the icon in battery will show the changing status until the battery is full.

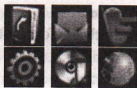
#### Use travel charger :

Battery can be charged by travel charger, connect charger adapter with slot on the mobile and the plugs of charger with correct power socket., the icon in battery will show the changing status until the battery is full. And stop changing when complete charging.

#### III, Menu

In the standby mode by entering the left button (menu) to enter the menu interface, the screen shows the status of icon. Light point will enter the relevant icon menu.





## 1> Phone book

The storage capacity of telephone numbers depends on SIM cards. The telephone numbers of cell phones and SIM memory can be used as a unified telephone directory inquiry. Each record could perform the following operations according to the "Option".

Browse: browse all the telephone content.

Edit: edit this telephone number.

Copy: copies of the records will be replicated from mobile phone to SIM card, or SIM copy to the phone records; the records copy to cell phone from mobile records, or copying of records on the SIM to SIM card.

Move: If the record keeps in the cell phone, the mobile operators will submit the records to the SIM, contrarily, move to their SIM card.

### (1) Search Entry

The function is available in the telephone directory by name alphabet sequencing. Use of the function, you can search the directory of telephone numbers you need.

"Input names" or full-spelling of the names to investigate the importation of Chinese characters and Chinese characters can be imported or full-spelling of the first name, change its input method "importation name" a little screen interface beneath the "ABC" or "abs" or "拼".

Choose "Search" out of telephone direction to meet the requirements of all the records. Visit by or under the direction of records with the touch pen, then press confirmation key could be crucial for dial-up call.

### (2) Add New Entry

This function is to add a new telephone directory records, could be added to the cell phone or SIM card as follows:

Touch "To phone", imported names at first, light spots "Edit" to enter the names of picture editing, importing names lightly choose "option"- "Done", then select or to be imported under the direction of information items: telephone numbers, home telephone, company name, e-mail, phone, fax, birthday, Key or right direction for diazotize film links, rings chosen, the groups set up calls, if your entry errors light spots "clear" remove to last import. To eliminate all input, press "clear" for a while, and click "OK" to complete all procedure.

### (3) Copy all

This function could affect the interactive copy between phone book and SIM.

Note: If the phone book and SIM card have the different volume, copy will follow

the small volume phonebook.

(4) Delete

This function will delete phone book in phone or SIM card, if delete for one time, password of phone will need; this also could delete records one by one.

(5) Caller group

This function could set five group names, incoming call ringbone, incoming call pictures, and incoming call movie and group numbers.

(6) Extra number

This function could set the phone No., Service No. and emergency No.

(7) Settings

Memory status: Display used volume and total volume of phonebook, and SIM card phonebook.

Preferred storage: Setting store position of new numbers, choose acquiescence status to SIM or phone.

Fields: When add new number to phone, please choose the content, include family No., company name, email, company tell, fax, birthday, icon, video, ringtone, and call-in group. Click "Off" or "On" to choose content. Click "Done"- "Yes" to complete setting.


My name card: edit my name card and send my name card.

(8) Caller Picture

After setting, a photo of the person who is calling will appear on the watch screen

(9) Caller ringbone

You can set a special ringbone for some one call, so that you can know who is calling.

2.>  Message

1>SMS

(1) Write Message

(2) In box: press "option" to choose the following step you need:

Reply: to reply your message

Call Sender: call the sender

Forward: send the MMS to others

Delete: delete chosen SMS

Copy to phone (SIM card): Copy the article text messages to mobile phone or SIM card.

Move to mobile phone (SIM card): Mobile article or short message to the mobile phone SIM card.

Delete all: delete all text messages inbox

Copy All: All copy is stored in the SIM card or mobile phone short message.

Move all: Mobile all stored in the SIM card or mobile phone short message.

The use of number: a text message which extracted all the telephone numbers saved to the SIM card or mobile phone.

Use number: use the phone number.

Use URL: short message using the link.

### (3) Outbox

This menu could let you execute, store and send SMS, you can do as follows:

Resend: send the SMS again

Edit: edit the content of SMS

Delete: delete chosen SMS

Copy to phone: copy the SMS to the phone

Move to phone: move the SMS to the phone

Delete all: delete all SMS in outbox

Copy All: All copy is stored in the SIM card or mobile phone short message.

Move all: Mobile all stored in the SIM card or mobile phone short message.

The use of number: a text message which extracted all the telephone numbers saved to the SIM card or mobile phone.

Use number: use the phone number.

Use URL: short message using the link.

### (4) Templates

You can use the templates to shorten your time for sending message.

### (5) SMS settings

Profile settings: to store or modify the information needed to send a short message center number, or from the network operator to obtain the number.

The state of settings: to set the report and respond to the path information, restart information report can be obtained from the short message center to send a text message if the status report success, whether or not to support this functionality and network operators

Memory Status: See the SIM card and mobile phone short message stored in the percentage of the total capacity, the specific capacity is based on the content of text messages and cell phone SIM cards and watch their own circumstances.

Store location: Set Short Message Outbox default storage location, select the SIM card or mobile phone

Preferred Storage: to choose where you want to store the message, phone or SIM card.

### 2> MMS

Your phone could send and receive MMS (Multimedia Messaging Service). Through MMS, you can send pictures, sound and text contained in the news. When sending MMS information, the recipient must use your own MMS function of phone. You can check the news.

### (1) Writing message

- a. Choose writing message, then input information.
  - To: setting the mobile No. or email of receiver.
  - Cc: setting copy mobile no. or email
  - BCC: setting the mobile no. or email as confidential.
  - Subject: setting MMS subject
  - Edit content: edit MMS content, user can add word, pictures, voice and affix.
- b. When input the information, click "Done" to enter next step.
  - Send only: send the edited MMS
  - Save and send: store in outbox and send.
  - Save to drafts: Store MMS in outbox and send
  - Send options: setting the MMS sending option
  - Exit: exit the MMS editing and show the question if you want to store
- (2) Inbox
  - This menu allows you to read MMS, choose one to enter the following:
  - View: read MMS
  - Properties: see the sender, topic, date and volume.
  - Reply: answer message
  - Reply all: answer to all people in "sender" "receiver" "Cc"
  - Forward: send the MMS to others
  - Delete: delete choused MMS

- Delete all: delete all MMS from input
- Use details: use the number in MMS
- (3) Outbox
  - This menu could let you execute, store and send MMS, you can do as follows:
    - View: check the content of MMS
    - Forward: send the choused MMS to others.
    - Delete: delete choused MMS
    - Delete all: delete all MMS in outbox
    - Properties: See the sender, topic, date and volume.
    - Use details: use the number in MMS
  - (4) Drafts
    - Show all MMS in draft and you can do the following:
      - View: check the content of MMS
      - Send: send choused MMS
      - Edit: edit choused MMS
      - Delete all: delete all choused MMS in draft box
      - Properties: see the sender, topic, date and volume.
      - Use details: use the number in MMS.
  - (5) MMS settings
    - Compose: setting edit mode, automatic sign



Send: setting the valid date of MMS, sending return, reading return, priority and interval time and sending time.

Retrieve: Setting the internet, Rome internet, reading report and sending report.

Filter: setting anonymity of sender, receive max volume and ad.

Server profile: setting collocates of internet.

Memory status: see the MMS storage status.

3> Voice mail server

Setting voice box No. and messaging, when you get voice mail, the service supplier will send notice to your mobile, and you can input two group of voice box no..

In message menu, press confirmation key to choose "voice mailbox" and press "OK" to enter.

Edit: input or amend no...

Connect to voice: you can listen to voice message with this function.

4> Broadcast Message

The service allows you to receive the text of a variety of information, such as weather conditions or traffic information. The opening of the world's few network, and relevant information requested advisory network operators.

3> **call history**

(1) Missed call

You can read the missed calls at 20 recently under this function.

Access to this function and press confirmation key to choose a telephone number.

Press "Option" on the recording interface, then you can operate as follows:

Send SMS: edit and send SMS.

Send MMS: edit MMS and send.

Check: read the contents of the telephone records.

Delete: delete the records from the missed calls list.

Save to phone book: save numbers to SIM card or mobile phone.

Dial: dial number.

Edit: edit phone no. and store to SIM or mobile.

Send message: send message to any one directly.

Send MMS: send MMS to any one directly.

(2) Dialed call

With this function, you could visit last 20 dialed calls, after choosing a dialed call, you can operate send messages and MMS, delete, save, dial and edit. Please refer to "Missed calls".

(3) Received calls

With this function, you could visit last 20 received calls, after choosing a received call, you can operate send messages and MMS, delete, save, dial and edit. Please refer to "Missed calls".

#### (4) Delete recent calls

With this function, you could delete the records of missed calls, dialed call and received call one by one, or delete all by a time.

#### (5) Call time

With this function, you could read the records of call time, total send, and total received and operate the reset all time.

Last call time: check the last talk time.

Total sent: check talk time of the dialed call

#### (6) Call cost

You can set the call cost here with the password.

#### (7) SMS Counter

You can check how many messages you have sent and received here.

#### (8) GPRS Counter

You can check how much GPRS you have used here.

#### (9) Auto quick end

### 4> Settings

#### (1) Pen Calibration

To make by touch-screen calibration accuracy

#### (2) User Profiles

#### 2.1 General mode

#### 2.1.1 Activate: start this mode.

#### 2.1.2 Customize

2.1.1.1 Tone setup: include power on, power off, message tone, and keypad. Users can choose the preset ranges, also can choose the self-ringing.

2.1.1.2 Volume: include ringbone and keystone.

2.1.1.3 Alert type:

Ring/vibra/ring and vibra/ring after vibra

2.1.1.4 Ring tpye :

Single: only once ring

Repeat: continue ring

Ascending: the ring volume is louder and louder

2.1.1.5 Extra tone

Warning: need alert to note.

Error: note ring when there is something wrong.

Camp on: when search internet will ring.

Connect: when get connected will ring.

2.1.1.6 Answer mode

Any key: choose random key to answer.

#### 2.2 Meeting mode

Please refer to "General mode".

### 2.3 Outdoor mode

Please refer to "General mode".

### 2.4 Indoor mode

Please refer to "General mode".

### 2.5 Headset mode

Insert earphone enter into earphone mode; please refer to "general mode". If you choose automatic option of answer call automatically.

### 2.6 Bluetooth mode

Please refer to "General mode". Using Bluetooth to enter into Bluetooth mode automatically.

### (3) Phone setup

#### 3.1 Time and date

- ☆ Set home city: 77 cities in the world can be settled up.
- ☆ Set time: Set time, date and daylight saving.
- ☆ Set date and time : Set 12/24 hour system , press direction key to complete.

#### 3.2 Schedule power on/off

There were four groups timing function and the setting up of mobile phone switched on the automatic sundown time, the use of machine timer switch, start must first set up its opening. Then installed option switched on or turned off, setup last time.

### 3.3 Language

Show alternative language menu, choose English and simplified Chinese. Selected the language, information and advice menu would be changed.

### 3.4 Preferred input method

Installed editorial default input method.

#### 3.4.1 Multitap ABC

#### 3.4.2 Multitap abc

#### 3.4.3 Numeric

#### 3.4.4 Smart Pinyin

### 3.5 Display characteristic

Wallpaper: acquiescence photo provide for 4 sites to choose, user can download their own pictures.

Screen saver: The establishment of picture and screen time. The safety net will be opened for the first erected and then set up safety net waiting time, the final site selection safety net pictures, In addition to the mobile pictures, users can download to their own pictures as safety net, for GIF picture format.

Power on display: system provide four pictures for user , user can download pictures from internet..

Power off display: system provide four pictures for user, user can download pictures from internet.



Main menu style: matrix style.

Display date and time: when power on, the date and time will be showed on screen.

Show owner number: when power on, the tel No. will be showed on screen.

Display operator name: when power on, name of net supplier will be showed on screen.

Time type: set six types time display

### 3.6 Greeting Text

Can set as power on/off

### 3.7 Auto update of date and time

Can set as power on/off, this function should be supplied by net operator.

### 3.8 Flight mode

Set up normal mode or flight mode. Set up for flight mode, without signals, the telephone and not phoned sending and receiving short messages.

### 3.9 Handwriting

### 3.10 LCD settings

Setting LCD backlight time and bright.

## (4) Call setup

### 4.1 Caller ID

Network operators can choose the system default, hidden numbers and delivery

numbers. Cell phone to the factory default state system default.

### 4.2 Call waiting

Start: start call waiting function, cell phone will be linked to the net works. Pause, the network will respond, you send a message to confirm the operation. If launched a call waiting function if people call you on the phone when the phone network will provide you with caution. Displayed on the screen while another caller's telephone number.

Power off: if cancel this function, when someone call you during your conversation, net will not note you.

Search: for inquiries to the current state of network

### 4.3 Call divert

The network will be allowed to enter the telephone service you received designated another cell phone. Installed into the phone, cell options exchange, according to the "Ok" to access to the function.

The unconditional transfer function: when opened, all incoming phone calls to numbers on the transfer. Choose open or closed, cell phones will be linked to the networks, pause, and the network responded to the results of this operation.

Unable to be contacted when the transfer functions: opening, when unable to connect incoming calls to numbers on the transfer. Choose open or closed, cell phone will be linked to the networks, pause, and the networks responded to the



results of this operation.  
Non-response to the transfer of functions, if incoming calls within the specified delay time, no one answered. Then onto transfer numbers. Choose open or closed, cell phones will be linked to the networks, pause and the network responded to the results of this operation.

Transfer function when busy: when opened, enter the phone number on the cell phone is too busy to transfer. Choose open or closed, cell phone will be linked to the networks, pause, and the network responded to be the results of this operation.

Note: the above four switching operation:

Opening: Admission reopened after switching numbers.

Closing: the abolition of the transfer function.

Inquiries: a network for the transfer of functions to the current state. Cell phone will be linked to the networks, the networks respond after a short and the results of this inquiry.

All data relay calls: the need for the support network operators can transfer all data calls.

The transfer function for the abolition of all: the abolition of the transfer function, which is to transfer function, which is to transfer all functions as the cancellation.

The choice of functions, cell phones will be linked to the networks, pause, and the network responded to the results of this operation.

#### 4.4 Call barring

Call restricts the use of network service functions, allowing you to call restrictions. Set up this function, the need for network operators to provide limited network passwords. If the password is incorrect, wrong to suggest information. Needed in the selected option, the option to continue or start closing, cell phones will prohibit the importation of password then cell phones and networking, pause, the network will respond and the results of this operation.

#### Dial restrictions

All calls: when starts this function, can not dial calls.

International calls: when start this restrictions, can not dial international call.

International: when start this function, only call in foreign countries or to their local telephone (the country where network supplier locate)

#### Forbid incoming calls

All calls: when starts this function, can not receive calls.

Restrictions on roaming calls start: when you use the phone outside attribution services, could not longer receive telephone.

Note: these two types of prohibited operation:

Opening: after opening the importation of prohibited passwords.

Closing function: the abolition of the restrictions.

Inquiries: for a limited function to the current state of the network. Cell phone will

be linked to the networks, the networks respond after a short and the results of this inquiry.

**Cancel restriction:**

Cancel restriction and these needs the restriction passwords of network supplier.

**Change passwords**

This function use for change restriction passwords, the previous password is needed to input.

**4.5 Line switching**

Can switch line between line 1 and line 2, the acquiescence in line 1.

If choose line 2, whether can dial is related to network supplier.

**4.6 Call time reminder**

The function can be made to users indicate that the end of the phone in order to save the charges. Suggest options for the type of closed soon or cycle, the closure will be set up to suggest the sound; installed whenever the need for the importation of reference 1~3000seconds, and the specific time suggested that the time, will automatically ring for a cell phone; installed as part of a cycle, in the 30-60 ranges to choose between values, the phone. Each whole minute prior to the arrival of this time will automatically ring for a cell phone.

**4.7 Call time display**

Open or close talk time display, option open talk time display, in a telephone

conversation, the screen will show call time, choose closed not to show talk time.

**4.8 Auto redials**

Open or close automatically re-dial, choose open, in response to the dial-up process if the other side did not, over time, would be automatically re-dial cell phone. Automatic reallocation of up to 10 times the number in this period, users can call any other telephone, to end automatic reallocation. As long as the key can be cancelled.

**4.9 Closed user group**

Lightly click "identified", the list of groups showed that "additional" input group names light spots "option" or detected choice "completed", the further importation of contents serial lightly.

**4.10 Blacklist**

You can set your blacklist here.

**(5) Network setup**

With this function, you can set up the network you wanted automatically or manually when your mobile is under roaming status. But you only could choose the network you used after the valid roaming agreement between the networks you belong to with the other network you want to use.

**(6) Security setup**

The functions associated with the safe use of mobile phones and installed option.

## 6.1 Security setup

### 6.1.1 SIM lock

Please input PIN, you can set up if inputting correctly. If setting SIM card as start, you must input PIN password every day for start mobile. Three error for input, you will ask for input PUK (personal unlocking code). PUK code is used and changed the locked PIN code, please contact with the network operators if the PUK code is not provided or lost.

### 6.1.2 Fixed dial

If your SIM card had this function, you can dial nose unlimitedly, when start this function, cannot dial the nose on fixed call list. Settings up this function needs PIN2, this function needs the support of internet.

### 6.1.3 Barred dial

If your SIM card had this function, you can dial Nose unlimitedly, when start this function, can not dial the nose on fixed call list. Setting up this function needs PIN2, this function needs the support of internet.

### 6.1.4 Change password

With this function could change PIN, PIN2 and phone password.

## 6.2 Phone lock

The function can be used for locking/unlocking, operate opened or closed when the walkie-talkie password lock, when the walkie-talkie was locked, if the

replacement SIM cards will be switched on imported mobile phone passwords, 4 to 8 digit password for the mobile phone.

## 6.3 Auto Keypad lock

The functions can be carried out using the cell phone keypad locking/unlocking operation, automatic keyboard lock time: 5seconds, 30seconds, 60seconds, 5minutes, the time did not have any provision in the operation will automatically lock the keyboard. Keyboard locks acquiescence to state relations. Default detected by rapid then manually locked by unlocked dial button and clicked icon.

## 6.4 Change password

With this function could change PIN, PIN2 and phone password.

### (7) Restore factory settings

Please input password as required, click "OK" for restoring.

## 5> Multimedia

### (1) Organizer

#### 5.1.1 Calendar

Users can access and editor of the Memorandum of events specified date. Choice of calendar lightly clicks "Option" for the following functions:

View task: Today editor can check the same day or memorials can be installed



alarm to remind users. Please refer to specific operations "to do list".

Jump to date: go to the designated address or date of the memorandum of editing the day's events.

#### 5.1.2 To do list

You can write what you need to do on a special day and the system will remind you.

#### 5.1.3 Alarm

This mobile has five alarm clocks for users; users can set up according to its own needs. If the alarm clock unopened screen showed no signs alarm clock, open display signs up on screen, lightly click "edit" to enter installed alarm clock functions:

Please use touch pen to choose "On or off".

Setting alarm clock.

Choose the way of alarm you wanted: once, every day, the definition of the choice of day or a few days a week.

Snooze time: set 1-10 minutes

Alert type: choice vibra and ring

Click "Done" to complete, choice if save.

#### 5.1.4 Calculator

Mobile user could use this function to calculate increasing, decreasing, riding, in

addition to arithmetic.

#### 5.1.5 World Clock

Browsing every city time zone in the map of world and displaying correspond time and date of city in the screen below, click "Option" into the "on or off" of "Daylight saving time for foreign city".

#### 5.1.6 E-book reader

With this function, you can read the text with TXT format, you also can search, skip, add bookmark, access or delete bookmark, switch for full screen, etc.

#### (2) File manager

You can read the multimedia file from memory card under this menu; you also do some operations for choused file, such as check, re-named, copy, delete etc.

#### (3) Camera

Please refer to relevant option in "shortcut function"

#### (4) Image viewer



With this function, you can choose one picture to do some operations such as check, send to wallpaper, screen saver, power on display, phonebook, SMS, Bluetooth, renamed, delete, etc. whether the operation is successful or not depend on the size of screen.

#### (5) Video Recorder

Enter into Video Recorder, the interface is under camcorder status, Press "Option"



into the the absorbing options, include to player, camcorder setting, video setting, effect setting, storage, restore default.

After setting, press  or  to start or pause camcorder, after that, press "Stop" to finish and save the current video.

#### (6) Video player

With this function, you can pick up the short what you like to display, also could do operations as delete, etc.

#### (7) Audio player

Please refer to relevant option in "shortcut function"

#### (8) Sounder Recorder

The support of two cell phone, and AMR audio formats: WAV format has long recording time. Users can select functions from the setup option for recording format. Also recording of the conversation, of stored in the mobile phone memory cards; when the choice was originally listed cell phone recordings, click "choice" or "Roan Jean 1997-2000, recording, broadcast added (only for AMR format), rename, delete, deleted all of the creation and operation of transmission.

#### (9) FM Radio

1. Insert the earphone and turn on the radio, you can adjust different frequency and volume.

2. In the setting, there are: frequency list, hand import, auto search and setting.

## 6 > Network Services

(1) Information from the server

(2) Bluetooth

### 6.2.1 Power

Switch on, then make Bluetooth into be working status.

### 6.2.2 Inquiry Audio Device

Search other Bluetooth equipment, finish searching the new Bluetooth equipment, and choose the one you would like to link.

### 6.2.3 My Device

My equipment is that all equipment which has been connected to this mobile phone.

### 6.2.4 Active Device

Equipment that is being used.

### 6.2.5 Settings

Display all detailed information of this setting.

### (3) WAP

The function of the cell phone, you can browse the Internet, you have to provide some way for cell phone access to the Internet. Once it is activated in a manner you can start browsing.

6.3.1 Front page: the first page can be stored on a copy of the address, when using

WAP browsing mode the first visit to the front page.

6.3.2 Bookmark: you can bookmark stored in the mobile phone's memory website address as bookmarks. Choose a bookmark items, according to the "Option" enter into the following menu:

Got: Visit the website has been chosen to set bookmarks.

Edit: edit choused bookmark.

Delete: delete choused bookmark.

Delete all: delete all bookmarks

Add new bookmark: input topic and add to set a new bookmark.

6.3.3 Recent pages: you can browse history website, you can browse history record

6.3.4 Input adress: input website and connect to internet

6.3.5 Service inbox: The boxes are receiving the information will be stored in implanted WAP service boxes. Service Providers Association initiative to send information to your WAP mobile handsets.

6.3.6 Setting

(3)Data Account

This function used to set up account information, account information is already provided by the Manufacturers.

GSM data transmission: the option can be installed include: account numbers,

user names and passwords, lines, patterns and speed, network domain.

#### IV.Phone book

The mobile watch can store 500 phone number, SIM card store depends on the number of telephone number for storage capacity.The telephone numbers of cell phones and SIM memory can be used as a unified telephone directory inquiries.Each name can be stored in the corresponding three mobile telephone number. For each record,according to the "choice", can perform the following operations:

1> IP dial :

If IP has been set up dial-up (call set up the "IP dial) automatically insert in each other's IP prefix numbers for IP call .Otherwise, the general call.

2> Send MES:

Edit MES and send.

3> Send MMS:

Edit MMS and send

4> Browse:

Browse all the telephone content

Edit

Edit this number and name

Delete

Delete this number

Copy

Copies of the records will be replicated to SIM card in mobile watch or SIM copy to the mobile watch records.

movement

If the record keep in the mobile watch, the operation will submit the records to the SIM card; Contrarily move the records in SIM card to mobile watch.

Duplicate

Refer to 7> Copy

Send v card

#### V.addenda

1: Simple fault eliminate

If the watch mobile found abnormal, please restore to original settings, and read the following method, if the problem can not resolved, please contact seller or service person.

If the watch mobile found abnormal, please restore to original settings, and read the following method, if the problem can not resolved, please contact seller or service person.

FAQ	Reason	Solve method
Can not connect to internet	No service or you have no application for this service	Inquire to the network supplier for using
	Wrong setting	Refer to browse introduction
React slowly when touch screen	Touch screen have no proper adjustment	Adjust screen
SIM card problem	SIM card damage	Contact with network supplier
	SIM card fixed improperly	Check SIM card
	SIM card has feculence	Wipe SIM card with clean cloth
Signal weak	Signal weak area, such as high building or basement ,the signal is weak	Please go to signal good areas
Signal weak	The line will be crammed at high density calling period.	Avoid using mobile at high density calling period.
Power on failure	No electricity	Charge battery

Can not have a call	Start dial forbidden function	Cancel forbidden dial setting
Can not connect to network	SIM card inefficient	Contact with network supplier
	Out of GSM service area	Transfer to network service area
	Weak signal	Transfer to strong signal area
Can not charge	Voltage and charge disagree	Use voltage conformity with charger
	Charger nonstandard	Use charger special for this watch mobile
	Touch badness	Check plugs

## Agenda 2: Fittings instruction

**Speaker fittings:** Fittings include earphone and microphone for speaker.

**USB data wire:** When the watch mobile is power off, you can use USB data wire to connect with watch mobile to windows system PC and save files.

When the watch mobile is power on, you can use USB data wire to connect watch mobile and PC, and can start up charging function. If it is Power off, USB data wire can be used as U disk.