



# G2 Family Portfolio

An agile solution to simplify and maximize  
the performance of your network

COMMSCOPE®

# Flexible fiber, simple network solution

Your network needs to be easily upscaled and ready for future expansion. CommScope's G2 portfolio of panels, modules and cassettes is designed to help you get there. Pushing what's possible in your network.

In a reality where the only way to stay ahead of the ever-increasing network demand is with agility and relentless innovation, CommScope offers a simple solution with the G2 Family Portfolio.

A design born from CommScope's 30 year experience, the G2 Family of products not only seamlessly integrate with one another, to maximize the potential in your network with a minimal amount of part numbers. The G2 portfolio of products also offers the quality and reliability only an industry leader can offer.



CommScope's G2 panels, modules, and cassettes' broad range of solutions meet the needs of any in-building network, no matter the size. In the telecom room, the panels, modules, and cassettes allow for easy configurations and quick installations.

## G2 Fiber Panels

The G2 family of panels and modules is a versatile solution that is available in configurations for any application. No matter what polarity, fiber count or performance needed; the G2 family has a solution.

- A modular solution which easily allows for adds and changes to optimize your network with minimal components.
- G2 family modules fit into any AGL, HD or UD panels offering density up to 144f duplex LC per RU or 48f MPO per RU adding flexibility to any configuration.



AGL-1U-FX



AGL-1U-DRW



AGL-1U-ENC-FX



HD-1U



HD-2U



HD-4U



UD-2U



UD-4U

## AGL, HD and UD Panels

The AGL, HD and UD fiber panels support the G2 style module and adapter panels. Available in multiple sizes, you can select the panel which meets your needs and easily plan for the needs of tomorrow.

- The AGL panel is a low-cost solution for usable density in a 1U format.
- The HD (High Density) panel is available in 1U, 2U and 4U sizes, and supports high density applications.
- The UD (Ultra Density) panel is designed for even higher density applications and is available in 2U and 4U sizes.
- HD and UD panels support intelligence through imVision, the Automated Infrastructure Management (AIM) solution. More details on imVision are shown on [page 7](#).

The following high-level overview provides details of the AGL, HD and UD panels and associated modules and components.

Series	Density	Concept	Material ID	Description
<b>AGL - AGILE</b> Simple & Cost Effective	96 LC/RU 32 MPO/RU	Open Rear Fixed	760241517	AGL-1U-FX
			760241518	AGL-1U-ANG-FX
		Open Rear Sliding	760242453	AGL-1U-SL
			760242454	AGL-1U-ANG-SL
		Basic 2-Piece Drawer	760242455	AGL-1U-DRW-SL
		Basic Enclosed Fixed	760242475	AGL-1U-ENC-FX
Basic Enclosed Sliding	760242476	AGL-1U-ENC-SL		
<b>HD - High Density</b> Premium Features	96 LC/RU 32 MPO/RU	Standard Fixed	760210732	HD-1U-FX
			760210740	HD-2U-FX
			760210757	HD-4U-FX
		Standard Sliding	760209940	HD-1U
			760209957	HD-2U
			760209965	HD-4U
		Standard w/Splicing	760231506	HD-1U-SP
			760231514	HD-2U-SP
			760231522	HD-4U-SP
<b>UD - Ultra Density</b> Premium Features	144 LC/RU 48 MPO/RU	Premium Sliding	760227306	UD-2U
			760227314	UD-4U

## G2 Modules

CommScope's Ultra Low Loss (ULL) solution, the G2 module, supports higher speeds over longer distances allowing you to meet the loss budgets of today's ULL links and offer the reliability of the CommScope Application Assurance Guarantee.



360CM12-2x3-LS

- Factory tested to 0.35 dB IL multimode and 0.60 dB singlemode
- The G2 modules are backwards compatible with previous hardware such as the InstaPATCH® 360 and SYSTIMAX 360™ G2 fiber panels.

### G2 MODULES - ULTRA LOW LOSS SOLUTIONS METHOD B ENHANCED

	MPO 8 - 24 Fiber		MPO 12 - 12 Fiber		MPO 12 - 24 Fiber		MPO 24 - 24 Fiber	
	Material ID	Description	Material ID	Description	Material ID	Description	Material ID	Description
LC Multimode (OM3-OM4)	760236108	DM08-24LC-LS-ULL	760238838	DM12-12LC-LS-ULL	760236110	DM12-24LC-LS-ULL	760236112	DM24-24LC-LS-ULL
LC Multimode (OM5)	760236109	DM08-24LC-WB-ULL	760238839	DM12-12LC-WB-ULL	760236111	DM12-24LC-WB-ULL	760236113	DM24-24LC-WB-ULL
LC Singlemode UPC	760238082	DM08-24LC-SM-ULL	760238837	DM12-12LC-SM-ULL	760238083	DM12-24LC-SM-ULL	X	X

# G2 Splice Cassettes With and Without Pigtailed

Adds and changes to an existing network can be challenging. The G2 splice cassette simplifies adds and changes while increasing the flexibility of the entire G2 portfolio by enabling in-panel splicing without the need for a separate splice panels or trays.

- Available in 12 and 24 fiber (LC and SC).
- Supports both stranded and rollable ribbon. Available for multiple fiber types too!
- Bezels are available in multiple colors to help you easily identify fiber type for each cassette.
- Internal shutter reduces dust contamination, automatically actuates with connector insertion or removal and the shutter door illuminates with VFL when checking continuity.



G2-SP-24LCG-PT



G2-SP-24LCV-PT

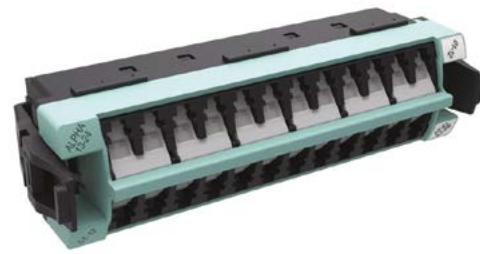
## G2 SPLICE CASSETTES

	Stranded		Ribbon	
	Material ID	Description	Material ID	Description
LC Multimode (OM4)	760244927	G2-SP-24LCX-PT	760244928	G2-SP-24LCX-RPT
	760245399	G2-SP-12LCX-PT	760245400	G2-SP-12LCX-RPT
LC Multimode (OM5)	760245398	G2-SP-24LCV-PT	N/A	N/A
	760245403	G2-SP-12LCV-PT	N/A	N/A
LC UPC Singlemode	760244929	G2-SP-24LCG-PT	760244930	G2-SP-24LCG-RPT
	760245401	G2-SP-12LCG-PT	760245402	G2-SP-12LCG-RPT
LC APC Singlemode	760245961	G2-SP-24LAG-PT	N/A	N/A
	760245960	G2-SP-12LAG-PT	N/A	N/A
Empty Cassette No Fiber	760245494	G2-SP-24LC	N/A	N/A
	760245495	G2-SP-12LC	N/A	N/A
	760245497	G2-SP-0000	N/A	N/A

## G2 PIGTAIL CASSETTES

	No Pigtailed		Pigtailed Included	
	Material ID	Description	Material ID	Description
LC Multimode (OM3-OM4)	760109256	360G2 Cartridge 12-LC-LS-AQ	760109470	360G2 Cartridge 12-LC-LS-AQ-Pigtailed
LC Singlemode UPC	760109272	360G2 Cartridge 12-LC-SM-BL	760109496	360G2 Cartridge 12-LC-SM-BL-Pigtailed
LC Singlemode APC	760109280	360G2 Cartridge 12-LCA-SM-GR	760109504	360G2 Cartridge 12-LCA-SM-GR-Pigtailed
SC Multimode (OM3-OM4)	760109298	360G2 Cartridge 6-SC-LS-AQ	760109512	360G2 Cartridge 6-SC-LS-AQ-Pigtailed A
	X	X	760109520	360G2 Cartridge 6-SC-LS-AQ-Pigtailed B
SC Singlemode UPC	760109314	360G2 Cartridge 6-SC-SM-BL	760109553	360G2 Cartridge 6-SC-SM-BL-Pigtailed A
	X	X	760109561	360G2 Cartridge 6-SC-SM-BL-Pigtailed B
SC Singlemode APC	760109322	360G2 Cartridge 6-SCA-SM-GR	760109579	360G2 Cartridge 6-SCA-SM-GR-Pigtailed A
	X	X	760109587	360G2 Cartridge 6-SCA-SM-GR-Pigtailed B

## G2 Adapter packs



360DPis-24LC-LS



360DP-2MPO



360DP-4MPO



360DP-6MPO-BK



360DP-8MPO

### G2 ADAPTER PACKS

	12 Fiber		24 Fiber	
	Material ID	Description	Material ID	Description
LC Multimode (OM3-OM4)	760230938	360DPis-12LC-LS	760216754	360DPis-24LC-LS
LC Multimode (OM5)	760236043	360DPis-12LC-WB	760236041	360DPis-24LC-WB
LC Singlemode	760230946	360DPis-12LC-SM	760216762	360DPis-24LC-SM
LC Singlemode APC	760230961	360DPis-12LCA-SM	760216770	360DPis-24LCA-SM
SC Multimode (OM3-OM4)	760134551	360DP-12SC-LS	X	X
SC Singlemode	760135087	360DP-12SC-SM	X	X
SC Singlemode APC	760135095	360DP-12SCA-SM	X	X

### G2 MPO ADAPTER PACKS

	Material ID	Description
2 MPO	760107490	360DP-2MPO
4 MPO	760107508	360DP-4MPO
6 MPO	760107516	360DP-6MPO-BK
8 MPO	760107524	360DP-8MPO

## G2 Wall Boxes & G2 Accessoriss

Wall Mount Building enclosures provide fiber distribution management when rack space is at a premium. A simple and reliable way to maximize the potential of your network while minimizing your footprint.

- Compatible with all G2 modules, splice cassettes and adapter packs, the WBE-MOD adds a flexible solution with a reduced footprint.



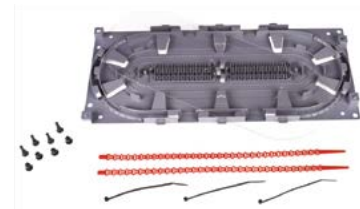
WBE-EMT-BK-4P-MOD



AGL-SPLICE-48



AGL-1U-TROUGH



360 LP-STACK-SPT

### G2 WALLBOXES

Density	Material ID	Description
24 LC	760245881	WBE-EMT-BK-1P-MOD
48 LC	760164616	WBE-EMT-BK-2P-MOD
96 LC	760060426	WBE-EMT-BK-4P-MOD
192 LC	760164624	WBE-EMT-BK-8P-MOD

Note: the G2 splice cassettes are not compatible with WBE-EMT-BK-1P-MOD

### G2 ACCESSORIES

Material ID	Product Code	Description
<b>AGILE Panel Accessories</b>		
760241378	AGL-SPLICE-48	AGILE Splice Tray Kit
760193938	AGL-1U-TROUGH	AGILE panel 1U Jumper Management Trough
<b>Panel Accessories</b>		
760039867	RS-2AF-16SF	RoloSplice Kit with 2 fusion splice trays for 1U and 2U rack mount, 2 and 4 port wall mount
760031856	RS-4AF-16SF	RoloSplice Kit with 4 fusion splice trays for 1U and 2U rack mount, 2 and 4 port wall mount
760031054	SW-6AF-16SF	Fusion Splice Wallet Kit with 6 splice trays for 4U rack mount and 8 port wall mount. See page 2 for reference.
760148502	360-LP-STACK-SPT	Fusion Splice Tray Kit, stackable, large format for 1U and 2U rack mount
<b>Miscellaneous</b>		
760207944	HD-1U-REAR-EXT	1U Rear cable extension
760239082	SD-HD-UD-UDS2U-DOOR-LOCK-KT	Door lock kit for SD, HD, UD and UDS2U panels, including one (1) lock and one (1) key
760209619	CABLE-MOUNT-KIT-12	Cable attachment molding x 12
760058677	RMB-6-1/2	InstaPATCH Plus attachment bracket, rack mounted, six 1/2" fittings
760058685	RMB-6-3/8	InstaPATCH Plus attachment bracket, rack mounted, six 3/8" fittings
760109462	360G2-MOD-BLANK-4PK	Mod Panel Blank Adapter Pack, 4 Panels
760039875	G2-SRF	Small Diameter Cable Entrance Kit
760039883	G2-23BRKT	Mounting Bracket
760185595	KIT, FIBER DRUM	Fiber Drum Kit (2 per kit)
760238380	BK-FP-SML	Ribbon splice cassette blocking kit for HD-1U, HD-2U and UD-2U
760238381	BK-FP-LRG	Ribbon splice cassette blocking kit for HD-4U and UD-4U

# imVision® Automated Infrastructure Management

imVision is the automated infrastructure management system that provides a holistic view of enterprise network connectivity fiber and copper, all in real time. When used in conjunction with the HD and UD panels in the G2 family, imVision shows you exactly where your assets are connected, what they're doing, and how you can get more out of them.

- Document the end-to-end paths to all IP devices, such as fiber switches, IP security cameras, high-definition audio and video equipment.
- Map fiber links between buildings.
- Can be deployed as part of the CommScope G2 HD and UD fiber panel product family, as well as with SYSTIMAX copper panels.
- Intelligent functionality can be factory-ordered for initial deployment, as shown in Figure A, or added via overlays on day 2 as depicted in Figure B.

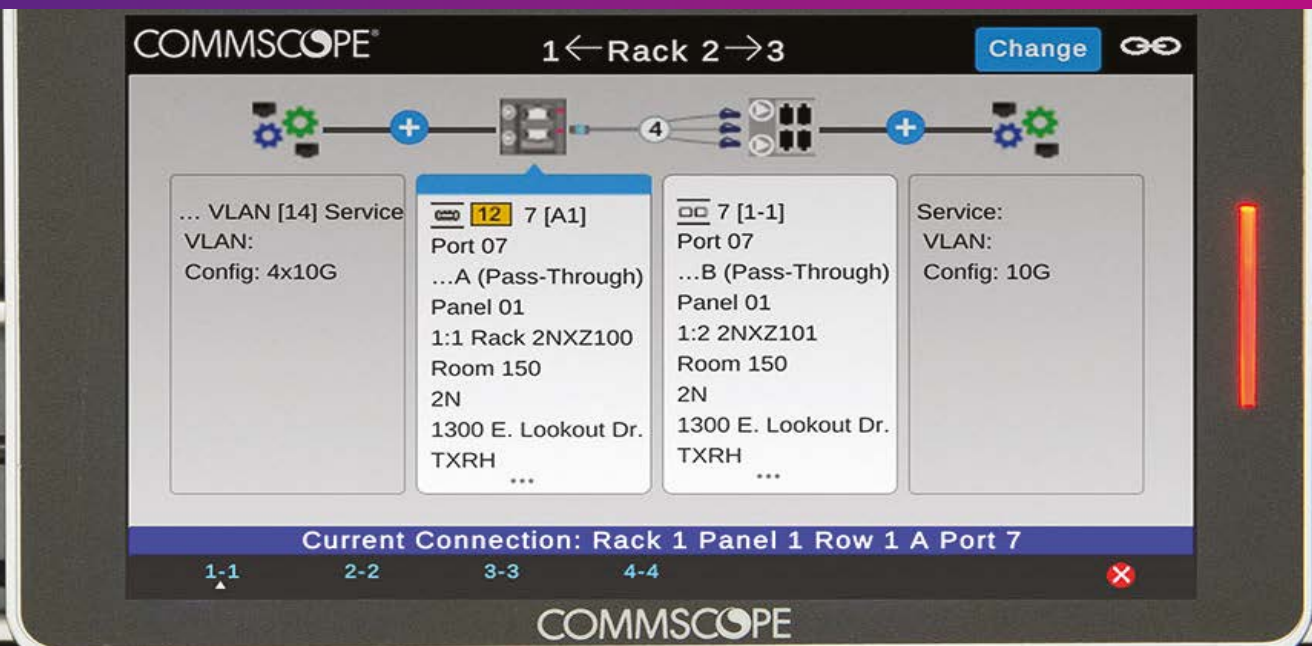
For detailed configuration and ordering information on imVision, please download the [imVision Solutions Guide](#).



Figure A



Figure B



CommScope pushes the boundaries of communications technology with game-changing ideas and ground-breaking discoveries that spark profound human achievement.

We collaborate with our customers and partners to design, create and build the world's most advanced networks. It is our passion and commitment to identify the next opportunity and realize a better tomorrow. Discover more at [commscope.com](https://commscope.com)

**COMMSCOPE®**

---

[commscope.com](https://commscope.com)

Visit our website or contact your local CommScope representative for more information.

© 2020 CommScope, Inc. All rights reserved.

Unless otherwise noted, all trademarks identified by ® or ™ are registered trademarks, respectively, of CommScope, Inc. This document is for planning purposes only and is not intended to modify or supplement any specifications or warranties relating to CommScope products or services. CommScope is committed to the highest standards of business integrity and environmental sustainability with a number of CommScope's facilities across the globe certified in accordance with international standards, including ISO 9001, TL 9000, and ISO 14001.

Further information regarding CommScope's commitment can be found at [www.commscope.com/About-Us/Corporate-Responsibility-and-Sustainability](https://www.commscope.com/About-Us/Corporate-Responsibility-and-Sustainability).

BR-114314-EN (04/20)