



**BY NATIONAL CYCLE**

**Accessories for BMW® R Series GS and R Series R Motorcycles**



# Welcome To ZTechnik Worldwide



*We are pleased to bring you this accessory catalogue and welcome you to the ZTechnik product line. ZTechnik, a division of National Cycle, Inc., specializes in high quality, innovative accessories for BMW Motorcycles.*

*The name itself, ZTechnik, is from the German "Zubehör Technik," which roughly translates to "technical accessories" in English. The philosophy of ZTechnik is to adhere to strict standards to produce only the highest quality accessories possible in order to enhance the rider's total experience.*

*Come ride with us, and you will experience the spark that drives a product into the design phase. It's not where we hang our helmets that these accessories are born... they find a place onto the pages of this catalogue after many miles of riding and talking with other BMW riders. The riders, the roads, and the experiences are all very different, but the one common bond all motorcyclists seem to share is the innate urge to mold their bike to themselves.*

*As great as the machines are, riders need products and accessories to solve problems, to carry gear, or simply for the fun of customizing their motorcycle, for making their bike unique.*

*We would like ZTechnik to augment your needs when it comes time to make your BMW motorcycle special. Our highly trained, technically skilled staff is at your service with our latest innovative products designed to enhance your enjoyment of riding.*

*Good Riding!*

**Barry Willey**  
President, National Cycle, Inc.

## MATERIAL ICONS



**Quantum® hardcoating** takes a quantum leap forward in scratch resistance, superb optics and long outdoor life. National Cycle and ZTechnik apply this crystal clear hardcoating to thick gauged **polycarbonate** material. The combined result is the strongest, most scratch resistant windscreen material available anywhere.



**FMR hardcoated polycarbonate** windscreens provide unbeatable strength, excellent optical quality, and extremely good scratch resistance. FMR polycarbonate is the OEM motorcycle industry standard and was first introduced to the motorcycle industry by National Cycle, Inc.



High strength **Stainless Steel** material is extremely resistant to corrosion and will not fatigue under weight bearing, high stress loads. Finish varies depending on product.



High strength **Steel** material will not fatigue with weight bearing and high stress loads. Finish varies depending on product.



Our **Machined Aluminum** products are impressively milled and solidly constructed. Available in several anodized finishes.



**Cast Metal**, a time-honored method of pouring hot metal into a mold, enables us to create complex and multi-dimensional designs.

## OTHER ICONS



**All Hardware and Fasteners Included** that are required to mount the item. Supplemental hardware may be required for certain models as noted in our application chart.



**Uses Existing Mounting Hardware** and requires no supplemental fasteners.



An exclusive **3-Year Warranty** covers all registered ZTechnik polycarbonate windscreens against breakage. Register yours at [www.ztechnik.com](http://www.ztechnik.com).



**ABE Approved** for German homologation. All ZTechnik windscreens are U.S. DOT approved as well.



**ABE Pending.** U.S. DOT approved.



**New Products** are identified with this icon at the top of each page.

All ZTechnik products are manufactured in Maywood, IL U.S.A.

Z0018  
©2019 National Cycle, Inc.  
Printed in U.S.A.

866-ZTECHNK (866-983-2465)

*Quantum® is an exclusive product and a trademark of National Cycle, Inc., Maywood, IL USA.*

*VStream® is a registered trademark of National Cycle, Inc., Maywood, IL USA and is covered by patent #7387328.*

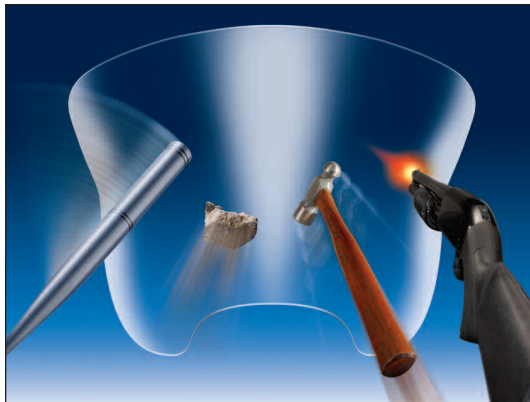
*Motorcycle model names and designations are trademarks of BMW AG and are used for reference only.*

WWW.ZTECHNIK.COM



## POLYCARBONATE... OR ACRYLIC? YOU DECIDE!

When you watch ZTechnik's online video demonstration, you'll see why they manufacture their windscreens from impact resistant polycarbonate material. There is simply nothing else that stands up to its strength and durability.



Compared to standard acrylic windshields, polycarbonate is **20X more impact resistant** and **23X more crack resistant**. That's performance you can feel comfortable riding behind!

For Quality, Value and Price, whether it's FMR or Quantum hardcoated, your polycarbonate windshield from ZTechnik will outperform any other windshield available.

*"The ZTechnik® windscreen on my 2003 R1150GS Adventure saved my life recently, or at least prevented a serious highway accident.*

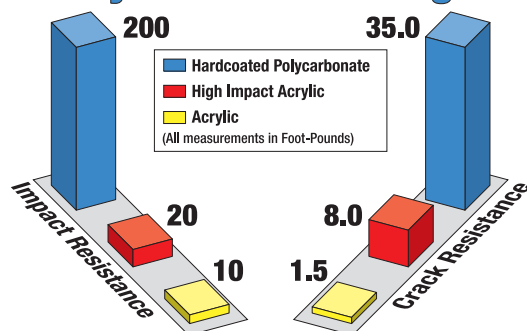
*"While I was riding on the interstate, a landscaping truck in front of me lost a 12"x12" paving tile, which struck my ZTechnik screen. I saw it coming and could do nothing but brace for the impact. The screen deflected under the weight and velocity of the paving tile, but did not break or crack! I was able to maintain control and safely exit the highway to check for damage. There was none!!! Except for some scratches, as you might expect, the screen and the mounts were in good functional order.*

*"I will need to replace the screen due to the scratches, and I will certainly get another ZTechnik screen!*

*"Many thanks for the best windscreen I have ever used!"*

*Jim B.*

## Polycarbonate Strength



## Welcome To ZTechnik Worldwide

## ZTECHNIK'S QUANTUM LEAP IN WINDSCREEN HARDCOATINGS

*What makes ZTechnik's z hardcoated windscreens better than all the others?*

### SUPERIOR SCRATCH RESISTANCE

**30X more scratch resistance than typical acrylic** windscreens is saying a lot! Think of it as 30X more miles per windscreen. FMR hardcoated polycarbonate is a big improvement over acrylic, yet Quantum hardcoated polycarbonate even has **10X better scratch resistance than FMR**. That's the kind of performance and strength you need from a motorcycle windscreen!

### GLARE-FREE OPTICS

Think about riding into the sun – or at oncoming headlights at night – and not having to look through the glare of fine scratches that eventually show up on your screen. Quantum hardcoating gives your windscreen much better optical definition and clarity, and your windscreen will stay that way a lot longer.



*On the left you'll see the motorcycle windscreen with typical surface wear, scratches and abrasions. This is NOT what you want in front of you when facing oncoming traffic!*



*Scientific laboratory monitoring and measurement instruments, like ZTechnik's Tabor 5130 Abraser, test the surface wear on both hardcoated and uncoated windscreen materials.*

## AND... ZTECHNIK'S 3-YEAR UNBREAKABLE WARRANTY

We believe we make the **world's best and toughest windscreens** and we back up that commitment with a **3-Year Warranty against breakage**. If your ZTechnik polycarbonate windscreen breaks, it will be replaced free of charge! No other windscreen manufacturer makes that promise and commitment!

*Registering your ZTechnik windscreen is easy! Just go to [www.ztechnik.com](http://www.ztechnik.com).*



# Welcome To ZTechnik Worldwide



## THE REVOLUTIONARY VSTREAM® WINDSCREENS

### HOW DOES VSTREAM WORK?

ZTechnik revolutionized windscreen performance with their VStream® windscreens. They are well known not only for superior wind-deflecting comfort but also for a riding environment that is calm and quiet. In order to create a more comfortable ride, other manufacturers offer extra-tall windscreens or spoiler tops to try to lift the air stream. But ZTechnik designed, for the first time ever, a windscreen with contours calculated and adjusted to manage the riding environment.

### QUIET

The airflow pattern of the wake from most windscreens is called a *van Karman vortex*. At speeds of 50-90 mph, the air swirls off the windshield in an approximate 90-degree rotational vortex. It then hits the bottom of the rider's neck on the way up, and curves off the shoulders at approximately 45 degrees. The VStream is named for its unique patented "V" shape. This design **quiets the ride** because it pushes that vortex out and away from the side of the rider's head, reducing irritating wind noise.

### COMFORT

The VStream's advanced "V" profile, unique three-dimensional contours, and smooth radiused edges all contribute to **calmness and comfort** in the riding environment. Unsettling wind turbulence is effectively pushed aside, and this fatigue-reducing experience is greatly appreciated by the rider and passenger. Many satisfied customers claim the VStream is definitely the most comfortable windscreen they've owned.

### DURABILITY AND OPTICAL CLARITY

In addition, VStream windscreens have an outstanding level of **durability and optical clarity** that is the result of over 73 years of windscreen manufacturing and advanced technology in forming and coating. Experience the VStream windscreens and see why they are **the most comfortable windscreen you can ride behind** on a BMW® motorcycle.

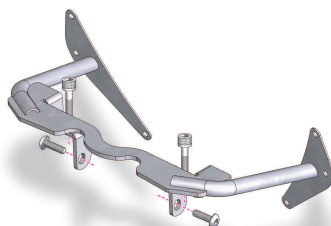
## STATE-OF-THE-ART VSTREAM+® WINDSCREENS

### WHAT IS VSTREAM+?

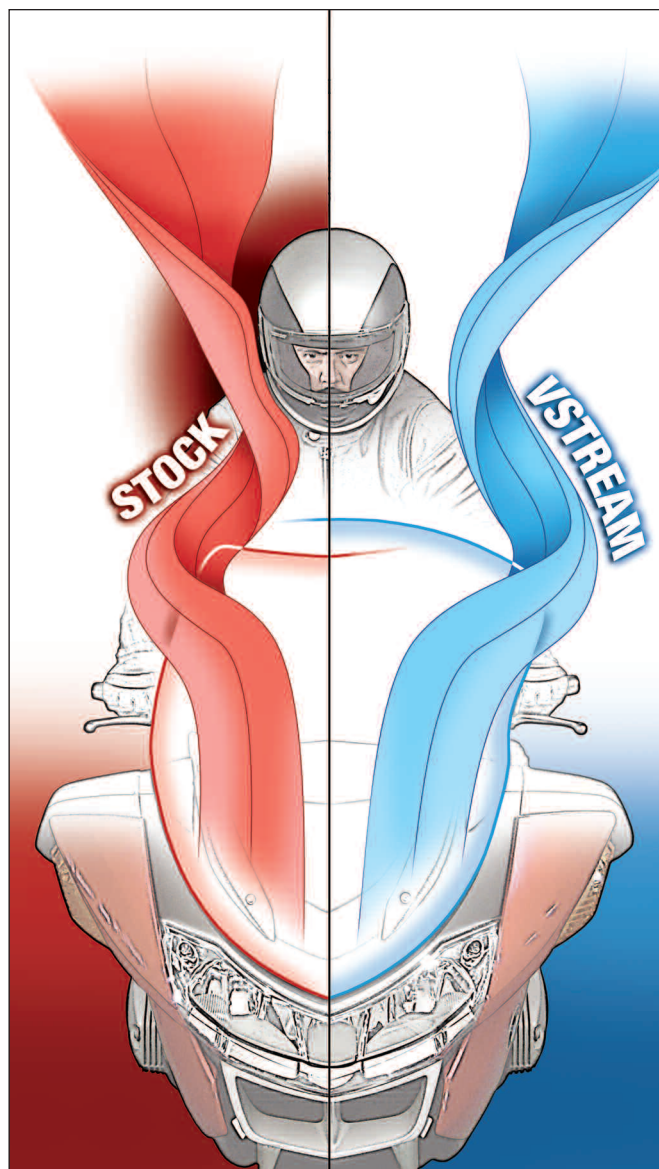
VStream+ windscreens are special **bracket mounted screens utilizing custom designed, highly engineered and perfectly manufactured mount systems**. Some models come from the factory with no provision for mounting a windscreen, while others will accommodate only very small screens that have little effective wind protection value.

ZTechnik believes that if a rider wants a touring windscreen for his or her bike, there should be nothing standing in the way.

VStream+ mounting brackets, included with the windscreen, are a custom fit for each model bike. They're easy to install, require no modifications to existing components, and add strength and rigidity to the windscreen mounting points.



Visit [www.ztechnik.com](http://www.ztechnik.com) to see "Virtual VStream" videos of "On the Road" windscreen testing!



*"The stock BMW screen was one of the best OEM screens I experienced to date with no buffeting at all. It lacked a little in height though, leading to a little wind noise at high speeds. I have a VStream® screen on my 2003 GoldWing and love it – hence the purchase of your Z2487 VStream for my R1200GS. I installed it today and rode a short distance at speed to test it. I can now ride without ear plugs and at 160kph have no buffeting. So nice to buy something that does what it says on the box."*

Corrie

*"My Z2487 VStream® works wonders on my R1200GS! At 6'3", I had a hell of a buffeting problem with my stock windscreen that this screen took away completely. Now, I'm comfortable at speed and it's unobtrusive when I'm up on the pegs off-road."*

*"Thanks for a great product, and since I just bought a GS Adventure, this will be my first upgrade in another week or two!"*

A41Capt





**NEW**

# VStream® Windscreens for 2013-21 R1200GS/R1250GS

Z2485

Z2486

Z2487

Z2488



WINDSCREENS  
AND ACCESSORIES

R SERIES GS

Z5220



The Z5220 Windscreen Stabilizer Kit (shown later in this catalog) adds rock-solid stability to your windscreen. All OEM height adjustments are maintained.

## VStream Windscreens

**Z2485** Sport Windscreen  
**Z2486** Sport Windscreen  
**Z2487** Touring Windscreen  
**Z2488** Touring Deluxe Windscreen

*Fits 2013-18 R1200GS/Adventure, 2019-21 R1250GS/Adventure/HP.*

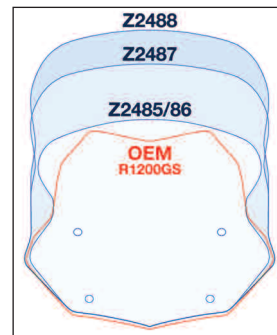
ZTechnik has the VStream solution for the new GS water boxers!

Even the small-sized Z2485 and Z2486 sport versions put the windscreen shape where it's needed most for taming turbulent airflow.

The taller Z2487 Touring Windscreen offers a perfect solution for GS riders who travel long and far. The Z2488 Touring Deluxe is for the dedicated Iron Butt riders. Factory height adjustment is maintained for all sizes.

Like all ZTechnik polycarbonate windscreens, they're covered by an exclusive 3-Year Warranty against breakage.

**NOTE:** We recommend the **Z5220 Windscreen Stabilizer Kit** for the taller Z2487 and Z2488.



## Specifications and Materials



### Z2485/86

H: 15.50" (39.3cm)  
W: 14.25" (36.2cm)  
Color: Dark Tint/Clear

### Z2487

H: 19.50" (49.5cm)  
W: 15.25" (38.7cm)  
Color: Clear

### Z2488

H: 22.00" (55.9cm)  
W: 15.75" (40.0cm)  
Color: Clear



4.5mm Polycarbonate with Quantum Hardcoating;  
ZTechnik 3-Year Warranty Against Breakage;  
Uses Existing Hardware; DOT/ABE Approved

# VStream+® Windscreens for 2004-12 R1200GS



Z2415A



## VStream Windscreen with Accessory Shelf

### Z2415A VStream Windscreen

Fits 2004-12 R1200GS

These VStream Windscreens are the premier wind management performers for the R1200GS! The comfort, clarity and durability are a great upgrade.

A unique lateral bracket adds torsional rigidity and includes an integrated accessory shelf with cutouts to mount standard BMW power outlets for connecting electronic accessories. Factory rake adjustment is retained.

All ZTechnik polycarbonate windscreens are backed by an exclusive 3-Year Warranty against breakage.

**NOTE:** Z2415A require the use of ZTechnik Z5300 Mirror Extenders for proper clearance.

Z2242



## Touring Windscreen

### Z2242 Touring Windscreen

Fits 2004-12 R1200GS.

This windscreen, 3.00" taller and 4.00" wider than the stock screen, is designed for excellent wind and weather protection with substantially improved airflow. The Z2242 utilizes the BMW rake adjust mount points, which remain fully operational.

All polycarbonate replacement windscreens are backed by ZTechnik's 3-Year Warranty against breakage.

## Specifications and Materials



**Z2415A**  
H: 19.38" (49.2cm)  
W: 19.00" (48.2cm)  
Color: Clear



4.5mm Polycarbonate with Quantum Hardcoating;  
ZTechnik 3-Year Warranty Against Breakage;  
All Hardware Included; DOT/ABE Approved

## Specifications and Materials



**Z2242**  
H: 16.00" (40.6cm)  
W: 18.00" (45.7cm)  
Color: Clear



4.5mm Polycarbonate with FMR Hardcoating;  
ZTechnik 3-Year Warranty Against Breakage;  
Uses Existing Hardware; DOT/ABE Approved





# VStream+® Windscreens for 2006-13 R1200GS Adventure

WINDSCREENS  
AND ACCESSORIES

R SERIES GS

Z2416



Z2418



**ZTechnik's Z5202 LeverAction™ Rake Adjust Kit works with this windscreen! See the Windscreen Accessories section for details.**

## VStream Windscreens

**Z2416 VStream Tall Touring Windscreen**

**Z2418 VStream Extra Tall Touring Windscreen**

*Fits 2006-13 R1200GS Adventure.*

The touring sized Z2416 windscreen, 3.00" taller than stock, brings VStream comfort, performance and durability to the 2006-13 R1200GS Adventure. The extra tall Z2418 windscreen is a full 5.00" taller than stock, and is made specially for taller riders or those who want maximum wind protection.

VStream windscreens for the R1200GS Adventure retain the factory rake adjustment for a wide range of individual comfort settings.

All ZTechnik polycarbonate windscreens are backed by an exclusive 3-Year Warranty against breakage.

**NOTE:** These VStream Windscreens require the use of ZTechnik Z5303 Mirror Extenders for proper clearance.

## Specifications and Materials



**Z2416**  
H: 21.00" (53.4cm)  
W: 16.80" (42.7cm)  
Color: Clear

**Z2418**  
H: 23.00" (58.5cm)  
W: 18.50" (47.0cm)  
Color: Clear



4.5mm Polycarbonate with FMR Hardcoating;  
ZTechnik 3-Year Warranty Against Breakage;  
Uses Existing Hardware; DOT/ABE Approved

# VStream+® Windscreens for 2002-05 R1150GS Adventure



Z2422



Z2423



## VStream Windscreens

### Z2422 VStream Tall Touring Windscreen

### Z2423 VStream Sport Touring Windscreen

*Fits 2002-05 R1150GS Adventure.*

Up-to-date VStream style, durability and performance are made for your R1150GS Adventure. This windscreen's rugged 5/8" steel lateral bracket adds stability and strength with two additional mount points for solid and secure 4-point mounting.

The Z2422 measures 3.50" taller than stock, and is geared for touring and wind protection. The Z2423 is a standard height screen but adds extra width. This is a great choice as an everyday windscreen.

Like all ZTechnik polycarbonate windscreens, they're covered by an exclusive 3-Year Warranty against breakage.



**Includes rugged 5/8" steel frame bracket for solid and secure 4-point mounting.**

## Specifications and Materials



### Z2422

H: 23.00" (58.4cm)  
W: 19.75" (50.2cm)  
Color: Clear

### Z2423

H: 20.00" (50.8cm)  
W: 18.00" (45.7cm)  
Color: Light Tint



4.5mm Polycarbonate with Quantum Hardcoating;  
ZTechnik 3-Year Warranty Against Breakage;  
All Hardware Included; DOT/ABE Approved





# VStream+® Windscreens for 1993-98 R850/1100GS

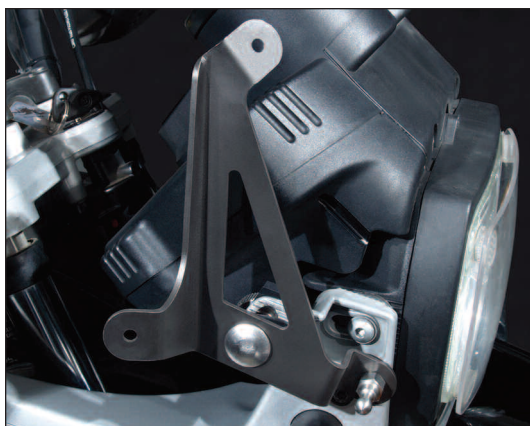
WINDSCREENS  
AND ACCESSORIES

R SERIES GS

Z2437



Z2438



The sturdy, powdercoated mounting brackets maintain OEM rake adjustments and offer solid 6-point mounting. It's rugged hardware for a rugged bike.



## VStream Windscreens

**Z2437 VStream Tall Touring Windscreen**

**Z2438 VStream Sport Touring Windscreen**

*Fits 1993-98 R850/1100GS.*

Up-to-date VStream style, durability and performance are what you need for the original R1100GS. These replacement windscreens offer a solid and secure fit with outstanding performance. The special mounting brackets maintain factory rake adjustment capability for a wide range of individual comfort settings.

The Z2437 is a great choice for long distance touring or maximum wind protection. The Z2438 is the perfect everyday, around-town windscreen.

Like all ZTechnik polycarbonate windscreens, they're covered by an exclusive 3-Year Warranty against breakage.

## Specifications and Materials



**Z2437**  
H: 20.75" (52.7cm)  
W: 18.00" (45.7cm)  
Color: Clear

**Z2438**  
H: 17.75" (45.1cm)  
W: 17.50" (44.5cm)  
Color: Clear



4.5mm Polycarbonate with FMR Hardcoating;  
ZTechnik 3-Year Warranty Against Breakage;  
Uses Existing Hardware; DOT Approved, ABE Pending

# Touring Windscreens for 1999-03 R850GS/R1150GS



WINDSCREENS  
AND ACCESSORIES

R SERIES GS

Z2240



Z2241



## Touring Windscreens

### Z2240 Tall Touring Windscreen

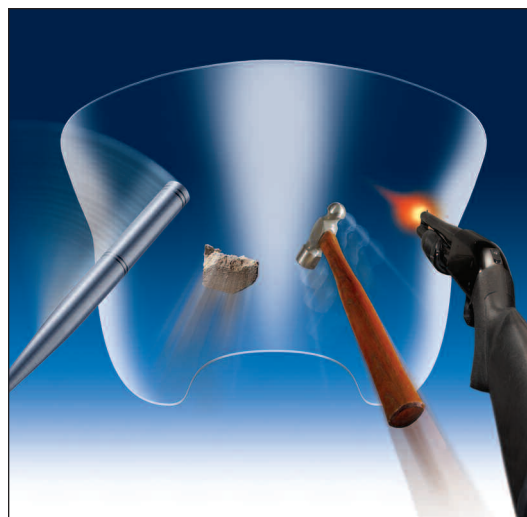
### Z2241 Sport Touring Windscreen

*Fits 1999-03 R850GS/R1150GS.*

Take away irritating wind noise, fatigue, debris, and rain with the Z2240 Tall Replacement Screen. With 7.75" of increased height, it will smooth out wind turbulence, protect you from the elements, and offer a viewing area with superior optical quality.

The Z2241 is a sportier version of the Z2240, but still wider and 4.00" taller than the stock windscreen for a significant improvement in wind protection. Like the Z2240, it features polycarbonate strength and excellent optics.

All ZTechnik polycarbonate windscreens are backed by an exclusive 3-Year Warranty against breakage.



*When you watch our online video demonstration, you'll see why we manufacture our windscreens from rugged polycarbonate material. There is simply nothing else that stands up to its strength and durability. Compared to standard acrylic windscreens, polycarbonate is 20X more impact resistant and 23X more crack resistant. That's performance you can feel comfortable and secure riding behind!*

*All ZTechnik windscreens are Quantum® or FMR hardcoated to give you superior scratch resistance. The type of hardcoat applied will depend on the size and design of windscreen.*

*For Quality, Value and Price, whether FMR or Quantum hardcoated, your polycarbonate windscreen from ZTechnik will outperform any other windscreen available.*

## Specifications and Materials



**Z2240**  
H: 21.75" (55.2cm)  
W: 18.50" (47.0cm)  
Color: Clear

**Z2241**  
H: 18.00" (45.7cm)  
W: 18.00" (45.7cm)  
Color: Light Tint



4.5mm Polycarbonate with FMR Hardcoating;  
ZTechnik 3-Year Warranty Against Breakage;  
Uses Existing Hardware; DOT/ABE Approved

866-ZTECHNK (866-983-2465)

WWW.ZTECHNIK.COM

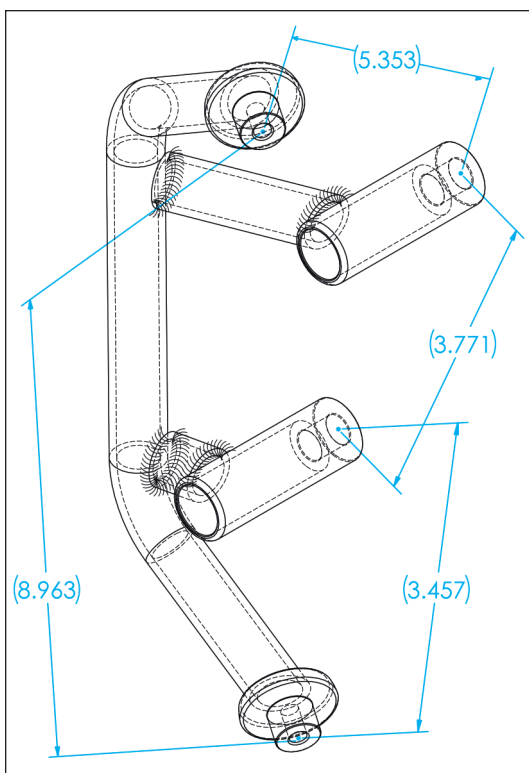




# NEW VStream+® Windscreens for 2015-21 R1200R/R1250R

WINDSCREENS  
AND ACCESSORIES

R SERIES R



*Sophisticated engineering and computer aided design and manufacturing go into every VStream+ mounting system to ensure perfect fit and superior strength.*

## VStream Windscreens

- Z2353** VStream Sport Windscreen
- Z2354** VStream Sport Touring Windscreen
- Z2355** VStream Tall Touring Windscreen

*Fits 2015-18 R1200R.*

- Z2356** VStream Sport Windscreen
- Z2357** VStream Sport Touring Windscreen
- Z2358** VStream Tall Touring Windscreen

*Fits 2019-21 R1250R.*

ZTechnik offers three great VStream windscreens for the liquid-cooled R1200R/R1250R! Choose the tint and size that suits your riding style and wind protection needs.

All three sizes feature integrated lower deflectors to reduce turbulence and backdrafts. They make your windscreen function like a fairing, and make your riding experience more comfortable.

These windscreens include a highly engineered, super-strong mounting bracket that integrates perfectly with the design of the bike. All three sizes work with either U.S.A. or European market turn signals.

All ZTechnik polycarbonate windscreens are backed by an exclusive 3-Year Warranty against breakage.

## Specifications and Materials



**Z2353**  
H: 15.75" (40.0cm)  
W: 17.25" (43.8cm)  
Color: Dark Tint

**Z2354**  
H: 20.50" (52.0cm)  
W: 20.50" (52.0cm)  
Color: Light Tint

**Z2355**  
H: 23.88" (60.6cm)  
W: 20.50" (52.0cm)  
Color: Clear



4.5mm Polycarbonate with FMR Hardcoating;  
ZTechnik 3-Year Warranty Against Breakage;  
All Hardware Included; DOT/ABE Approved

# VStream+® Windscreens for 2011-14 R1200R



## VStream Windscreens

**Z2443** VStream Sport Windscreen

**Z2442** VStream Sport Touring Windscreen

**Z2444** VStream Tall Touring Windscreen

*Fits 2011-14 R1200R.*

ZTechnik offers three state-of-the-art VStream windscreens for the R1200R! Choose the tint and size that suits your riding style and wind protection needs.

The Z2442 and Z2444 feature integrated lower deflectors to reduce turbulence and backdrafts. They make your windscreen function like a fairing, and make your riding experience more comfortable.

These windscreens include a highly engineered, super-strong mounting bracket that integrates perfectly with the bike's upper triple clamp.

All three sizes work with either U.S.A. or European market turn signals.

All ZTechnik polycarbonate windscreens are backed by an exclusive 3-Year Warranty against breakage.



*These windscreens utilize our custom-designed, lightweight and extremely strong 6-point mounting brackets. These are the best R1200R mount brackets made!*

## Specifications and Materials



### Z2443

H: 14.00" (35.5cm)  
W: 18.00" (45.7cm)  
Color: Dark Tint

### Z2442

H: 18.50" (47.0cm)  
W: 18.00" (45.7cm)  
Color: Light Tint

### Z2444

H: 22.50" (57.1cm)  
W: 18.25" (46.3cm)  
Color: Clear



4.5mm Polycarbonate with FMR Hardcoating;  
ZTechnik 3-Year Warranty Against Breakage;  
All Hardware Included; DOT/ABE Approved





# VStream+® Windscreens for 2006-10 R1200R

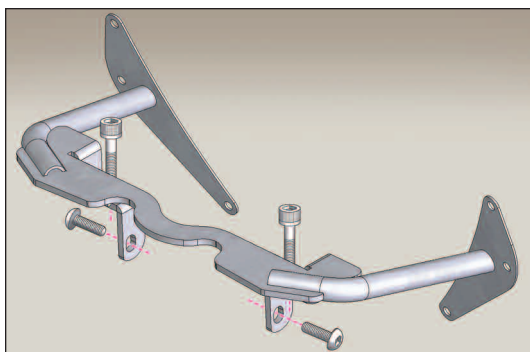
WINDSCREENS  
AND ACCESSORIES

R SERIES R

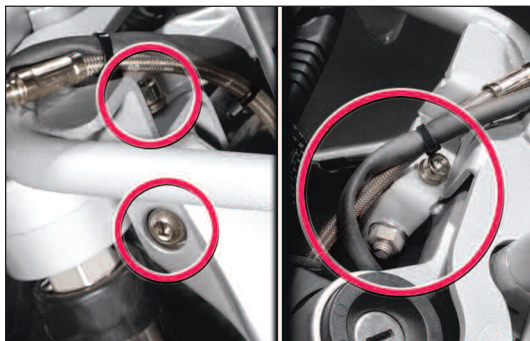
Z2405



Z2406



**This windscreen includes a highly engineered, super-strong mounting bracket that integrates perfectly with the bike's upper triple clamp.**



**This windscreen's special mounting bracket uses quality high strength fasteners and is designed for clear and unobstructed cable passage.**

## VStream Windscreens

**Z2405 VStream Windscreen (US)**

**Z2408 VStream Windscreen (Euro)**

*Fits 2006-10 R1200R.*

ZTechnik adds a world of VStream sport touring comfort to the versatile R1200R. This windscreen includes a highly engineered, super-strong mounting system that integrates with the triple clamp and the handlebar controls.

The Z2405, 5.50" taller than the OEM accessory screen, fits U.S. models only. The Z2408 is same size screen for the European model R1200R.

**Z2406 Tall VStream Windscreen (US)**

**Z2409 Tall VStream Windscreen (Euro)**

*Fits 2006-10 R1200R.*

The Z2406 VStream is a taller – 7.50" more than the OEM accessory screen – and wider version of the Z2405, for the rider who wants a bigger screen or sits taller in the saddle.

The Z2406 fits U.S. models only. The Z2409 is same size screen for the European model R1200R.

All ZTechnik polycarbonate windscreens are backed by an exclusive 3-Year Warranty against breakage.

## Specifications and Materials



**Z2405/Z2408**  
H: 18.50" (47.0cm)  
W: 18.75" (47.6cm)  
Color: Light Tint

**Z2406/Z2409**  
H: 21.50" (54.6cm)  
W: 21.00" (53.3cm)  
Color: Light Tint



4.5mm Polycarbonate with FMR Hardcoating;  
ZTechnik 3-Year Warranty Against Breakage;  
All Hardware Included; DOT/ABE Approved

# Touring Windshields for 2001-06 R1150R



WINDSCREENS  
AND ACCESSORIES

R SERIES R

Z2332



## Touring Windshields

### Z2332 Touring Windshield

*Fits 2001-06 R1150R.*

This superb screen and its sturdy mount system were designed and developed to fit perfectly to the R1150R. The tall touring size gives excellent performance and protection for long distance riding or cold weather commuting.

## Specifications and Materials



**Z2332**  
H: 20.25" (51.5cm)  
W: 17.50" (44.5cm)  
Color: Clear



4.5mm Polycarbonate with FMR Hardcoating;  
ZTechnik 3-Year Warranty Against Breakage;  
All Hardware Included; DOT/ABE Approved

866-ZTECHNK (866-983-2465)

WWW.ZTECHNIK.COM





## Windscreen Accessories

### Z5002 GS Fairing Winglets

*Fits 2013-18 R1200GS.*

ZTechnik's new GS Fairing Winglets raise the performance and comfort level of the 2013-18 R1200GS for both touring and off-road riders.

The GS Fairing Winglets are fuller and higher than the small OEM Cockpit Fairing parts. In all types of riding conditions, touring and adventure riders alike will be happy to have the increased performance of ZTechnik's GS Fairing Winglets on their motorcycle.

GS Fairing Winglets mount easily to existing points on the motorcycle in less than 15 minutes. Mount screws with special offset bushings keep the plastic away from the painted bodywork of the bike. All hardware is included.

GS Fairing Winglets are made from tough Quantum® hardcoated polycarbonate. This material is lightweight but has the durability and scratch resistance to handle the rugged off-road environment. ZTechnik's state-of-the-art manufacturing techniques and attention to detail are evident in the smooth radius edge, precision forming and excellent fit.

GS Fairing Winglets are compatible with ZTechnik VStream® Windcreens, OEM windcreens, and other windshields, as well as ZTechnik's Z5220 Windscreen Stabilizer Kit and ZTechnik Headlight Guards.

## Specifications and Materials



3.0mm Polycarbonate with Quantum Hardcoating;  
ZTechnik 3-Year Warranty Against Breakage;  
All Hardware Included; DOT Approved/ABE Pending

WWW.ZTECHNIK.COM

# Windscreen Accessories

## Mirror Extenders, GS Winglets



## Windscreen Accessories

### Z5300 Mirror Extenders; Pair

*Fits 2004-18 R1200GS; 2014-18 R1200 GS Adventure; 2006-14 R1200R; 2019-21 R1250GS/Adventure.*

### Z5303 Mirror Extenders; Pair

*Fits 2006-13 R1200GS Adventure.*

Give yourself a better view of the road and the vehicles behind you!

The Z5300 Mirror Extenders move your bike's mirrors out an additional 2 inches (52mm) on each side. The Z5303 Mirror Extenders move your bike's mirrors out an additional 2.5 inches (64mm) on each side. Competitive extenders only add 1.5 inches (less than 35mm) on each side.

ZTechnik Mirror Extenders allow you to see more easily past your shoulders, your passenger and your gear. They also move the mirror stalks further out when using a wider than stock windscreen like a ZTechnik VStream®.

This is a great 5-minute do-it-yourself upgrade that you'll appreciate!

## Specifications and Materials



Laser Cut 3-Gauge (.25-inch) Steel with Satin Black Finish;  
All Hardware Included

866-ZTECHNIK (866-983-2465)

# Windscreen Accessories

## ZTechnik Headlight Guards



WINDSCREENS  
AND ACCESSORIES

R SERIES GS



### Windscreen Accessories

#### **Z5403 Polycarbonate LED Headlight Guard**

*Fits 2018 R1200GS/Adventure and 2019-21 R1250GS/Adventure.*

#### **Z5402 Polycarbonate LED Headlight Guard**

*Fits 2013-17 R1200GS and 2014-17 R1200GS Adventure.*

#### **Z5401 Polycarbonate Headlight Guard**

*Fits 2013-17 R1200GS and 2014-17 R1200GS Adventure.*

#### **Z5400 Polycarbonate Headlight Guard**

*Fits 2004-13 R1200GS (Oilcooled) and 2006-13 R1200GS Adventure.*

ZTechnik Headlight Guards perfectly match the contours of your bike's headlight. They're thermoformed to wrap around the headlight frame cover, where they are attached using marine-grade Velcro®. No Velcro on the headlight lens! Crystal clear optics will not distort or reduce the light beam. These Headlight Guards virtually disappear when installed!

Formed from tough 3mm polycarbonate with ZTechnik's exclusive Quantum® hardcoating for 10X more strength and 30X more scratch resistance than fragile acrylic guards. Protect your headlight with a hardcoated polycarbonate Headlight Guard from ZTechnik.

Just like ZTechnik's polycarbonate windscreens, they're covered by an exclusive 3-Year Warranty against breakage.

Why trust your expensive headlight assembly to anything less?

### Specifications and Materials



3.0mm Polycarbonate with Quantum Hardcoating;  
ZTechnik 3-Year Warranty Against Breakage;  
All Hardware Included; DOT Approved/ABE Pending



*The Velcro® mounting for our Headlight Guards is practically invisible when installed!*



866-ZTECHNK (866-983-2465)

WWW.ZTECHNIK.COM





# Windscreen Accessories

## Stabilizer Kit, LeverAction Kit

WINDSCREENS  
AND ACCESSORIES

R SERIES GS

Z5220



Z5202



### Windscreen Accessories

#### Z5220 Windscreen Stabilizer Kit

*Fits 2013-18 R1200GS/Adventure and 2019 R1250GS/Adventure.*

ZTechnik's Z5220 Windscreen Stabilizer Kit adds support, strength and stability to the OEM windscreen mount arms on 2013 and later BMW® R1200GS and GS Adventure motorcycles.

The Stabilizer Kit securely supports even the tallest ZTechnik Touring Deluxe Windscreen (Z2388; 22.00" Height). The Z5220 Kit also works with all OEM and aftermarket windscreens currently available.

The Stabilizer Kit installs easily and is fully compatible with the OEM windscreen height adjust hardware. Simply loosen the two Stabilizer knobs, adjust the windscreen like you normally do, re-tighten the two knobs, and off you go!

### Windscreen Accessories

#### Z5202 LeverAction™ Rake Adjust Kit

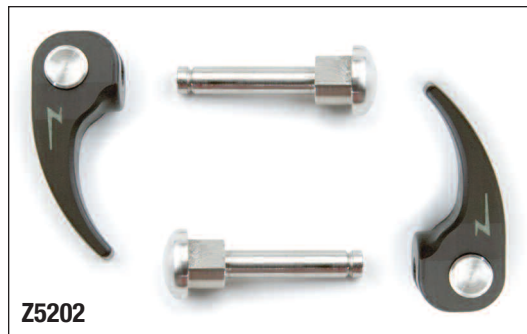
*Fits 2006-13 R1200GS Adventure.*

ZTechnik adds a new twist to a familiar design. The LeverAction™ Rake Adjust Kit is a trick item that obsoletes the knob-and-nut hardware on the R1200GS windscreen.

LeverAction combines the shaft and nut of the traditional windscreen adjustment hardware into a one-piece design, eliminating the possibility of nuts getting loose and falling into your motorcycle. A quick flip of the lever is all it takes to disengage the windscreen – within seconds you will have your screen in its new position and be back on the road!



Z5220



Z5202

#### Specifications and Materials



Injection Molded Nylon Plastic with Powdercoated Steel Hardware;  
Supplement to Existing Parts; All Hardware Included



Injection Molded Nylon Plastic with Powdercoated Steel Hardware;  
Supplement to Existing Parts; All Hardware Included

# Windshield Care for All Windscreens/Faceshields



N1401-01



## Windscreen Accessories

### N1401-01 Shield Wash™ Windscreen Cleaner

*For All Motorcycle Windscreens and Faceshields.*

After extensive road testing and research, our in-house chemical lab hit on the right combination of cloth and chemical that will keep the rider's windscreen as clean as possible while on the road.

Our Shield Wash™ is made to create that low surface tension that is the key to keeping a windscreen clean. Just as important is the cloth. The cleaning cloth we use is soft, but it lifts and holds dirt.

Shield Wash is designed to effectively clean virtually any optical part – windscreens, faceshields, sunglasses, etc. It is fully compatible with our exclusive Quantum® hardcoating, as well as GE's FMR hardcoating. It also works well on all High Impact Acrylic and standard acrylic surfaces.



See how well Shield Wash and RainZip work!  
<http://www.nationalcycle.com/blog/archives/397>

## Materials and Specifications

The Shield Wash cleaning kit includes an eight-ounce bottle of Shield Wash and a one-ounce refillable bottle with a small microfiber cloth to carry on the motorcycle. It's everything a rider needs to keep their windscreen sparkling clean!

N1410-01



## Windscreen Accessories

### N1410-01 RainZip® Rain Repellent Treatment

*For All Motorcycle Windscreens and Faceshields.*

To keep your windscreen clearer in rainy weather, National Cycle and ZTechnik developed RainZip®, a specially formulated rain repellent treatment that is safe to use on any Quantum® or FMR hardcoated Windscreen. And, it's safe to use on ANY motorcycle windscreen, as well as helmet faceshields and goggles.

RainZip is hydrophobic – when rain accumulates on the windscreen, RainZip causes it to effectively bead up and blow away, even at riding speeds of only 20-30MPH. RainZip will give riders a clearer view of the road ahead... especially when it's wet!



104°

RainZip's effectiveness is measured by contact angle. If the angle is greater than 90° it is determined to be nonwetting. All measurements taken on National Cycle's own Tantec® Contact Angle Meter.



59°

104°	Quantum Hardcoated Polycarbonate + RainZip
88°	Quantum Hardcoated Polycarbonate
78°	FMR Hardcoated Polycarbonate
59°	Acrylic

## Materials and Specifications

RainZip is available in a 3-oz. size with a special application cloth – enough for three applications. One application will last 3-4 months.





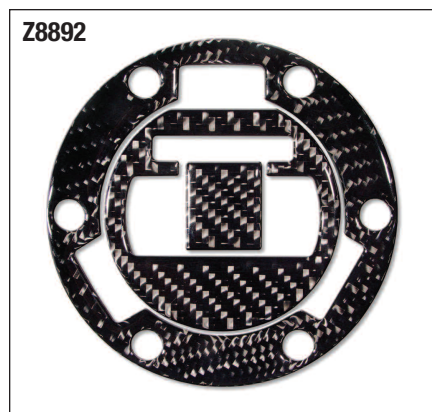
# Genuine Carbon Fiber Fuel Cap, Tank and Gauge Trim



Z8890



Z8891



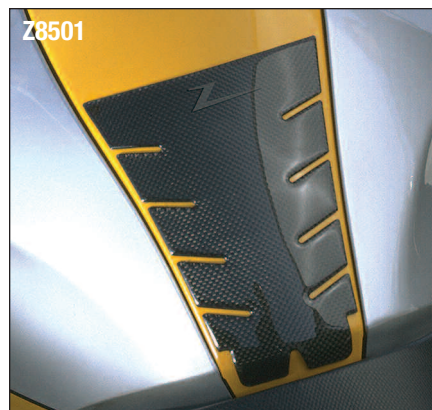
Z8892



Z8500



Z8502



Z8501

## Genuine Carbon Fiber Trim

### Z8890 Carbon Fiber Fuel Cap Trim

Fits a wide range of BMW models with exposed fuel trim ring torx fasteners. Protects filler area from key and fuel pump damage. ZTechnik carbon fiber is protected with a top coat that will not yellow. Secures with 3M® waterproof adhesive that is also fuel resistant.

### Z8891 Carbon Fiber Fuel Cap Trim

Fits a range of BMW models with concealed fuel trim ring fasteners. Protects the fuel trim ring and cap from key and fuel pump damage.

### Z8892 Carbon Fiber Fuel Cap Trim

Fits a range of later model BMW motorcycles with exposed fuel trim ring torx fasteners.

### Z8641 Carbon Fiber Gauge Trim

Dress up the flat plastic on your 2004-13 R1200GS/Adventure gauge panel with ZTechnik's Carbon Fiber Gauge Panel Trim!

### Z8500 Carbon Fiber Fuel Tank Protector

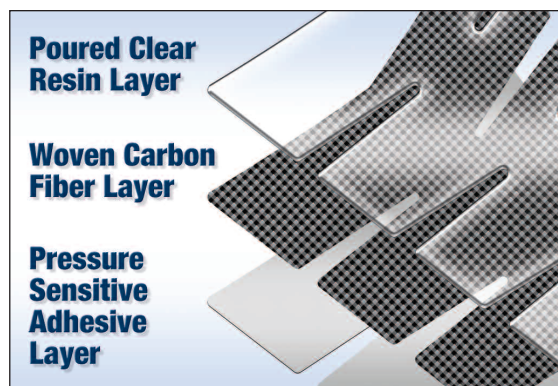
Fits a wide range of GS and R models. Measures 7.50" (19.0cm) long. Genuine carbon fiber cloth is protected by a clear, smooth resin top coat that will not yellow. 3M® waterproof adhesive means no peeling like the lower cost protectors. Styled for the BMW rider.

### Z8501 Carbon Fiber Fuel Tank Protector

Fits a wide range of GS and R models. Measures 8.00" (20.3cm) long. Designed to be a perfect fit for the center section of your tank.

### Z8502 Carbon Fiber Fuel Tank Protector

Fits a wide range of R1200R models. The compact size will not interfere with most tank bag mounts.



Z8641

APPEARANCE  
AND TRIM

R SERIES GS, R SERIES R

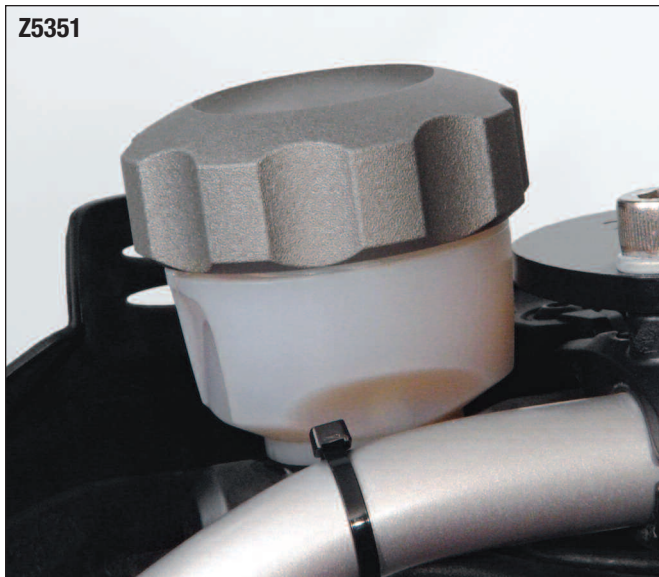
Refer to the ZTechnik Application Guide for the latest fitment information and updates.



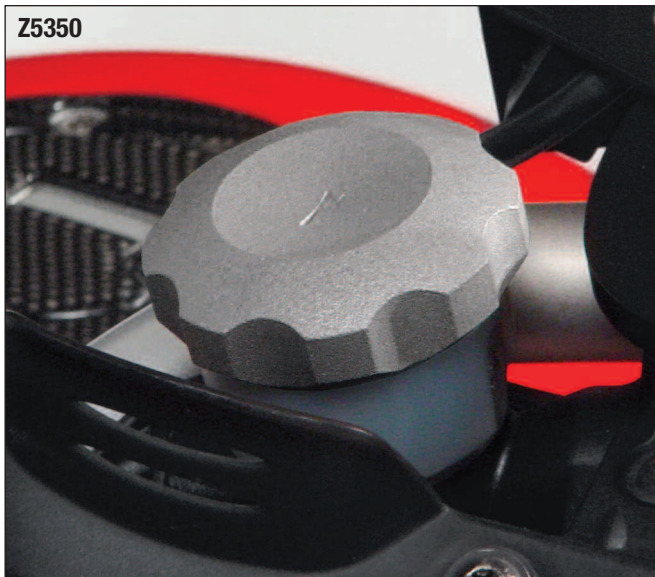
# ZTechnik® ZCaps/ZPlugs for Reservoirs and Chassis



Z5351



Z5350



## Machined Aluminum ZCaps and ZPlugs

### Z5350 Clutch Reservoir

*Fits 2004-13 R1200GS (Oilcooled), 2006-13 R1200GS Adventure, 2006-14 R1200R.*

### Z5351 Brake Reservoir

*Fits 2004-13 R1200GS (Oilcooled), 2006-13 R1200GS Adventure, 2006-14 R1200R.*

Replace the plain plastic clutch and brake reservoir covers with these beautiful Machined Aluminum ZCaps™. They have a beadblasted, durable hard-anodized gray finish to match the Boxer's valve covers. Precise tolerances ensure a perfect and exact fit.

The ZCap's anti-rotational threads hold more securely than other after-market replacement caps, aligning and gripping the OEM reservoir's locking detents.

### Z5360 Left/Right Telelever Pivots: Pair

*Fits 2004-13 R1200GS (Oilcooled), 2006-13 R1200GS Adventure, 2006-14 R1200R.*

### Z5361 Large Right Rear Frame Junction

*Fits 2004-13 R1200GS (Oilcooled), 2006-13 R1200GS Adventure, 2006-10 R1200R.*

### Z5362 Small Right Rear Frame Junction

*Fits 2004-13 R1200GS (Oilcooled), 2006-13 R1200GS Adventure.*

### Z5363 Large Left Rear Frame Junction

*Fits 2004-13 R1200GS (Oilcooled), 2006-13 R1200GS Adventure.*

Replace the black plastic frame plugs and empty holes on the telelever pivots and frame junctions with these beautifully machined aluminum ZPlugs. They have a beadblasted, durable hard-anodized grey finish to match the Boxer's cylinder head covers. Precise tolerances and channeled rubber o-rings ensure a perfect and exact fit. Kit includes a tool for removing the OEM plastic plugs.

Z5360



Z5361



Z5362



Z5363



## Specifications and Materials



*Machined Aluminum with Anodized Gray Finish; ZCaps are Direct Replacement – No Tools Required; ZPlugs include a simple installation tool.*





# **NEW** ZTechnik® Engine Guards for R Series GS/R Series R

Z7106-002



Z7107-003



#### **Maintenance-Friendly Design and a Handy Accessory Bracket**

ZTechnik's Engine Guards are carefully designed to allow clearance for valve cover access or oil changes, so they don't need to be removed for routine maintenance. An integrated top bracket on each Engine Guard allows you to mount aftermarket accessory lights, video cameras or whatever you can imagine.

### **Touring, Comfort, and Convenience**

#### **Z7106-002 Powdercoated Steel Engine Guards**

*Fits 2019-Later R1250GS*

#### **Z7107-003 Stainless Steel Engine Guards**

*Fits 2019-Later R1250GS*

ZTechnik's Engine Guards are now available in both the original Electropolished/Beadblasted Stainless Steel finish and a new E-Coated/Powdercoated Black finish that looks great on the new models.

The E-Coat (Electrophoretic Coating) is applied inside and out to eliminate rust and corrosion, and the Black Powdercoating makes the finish tough and long lasting.

ZTechnik Engine Guards attach to the engine mounts – not the engine covers – to protect the motor's heads/valve covers. Integrated top brackets on each guard allow the rider to mount accessory lights, video cameras, or whatever they can imagine. These Engine Guards are carefully designed to allow clearance for oil changes or valve cover access, so they don't need to be removed for routine maintenance.

For greater comfort on longer rides, mount 1-inch clamp-on foot pegs to the Engine Guard's upper or forward sections.

All mounting hardware is included, along with easy-to-follow installation instructions.

#### **Materials and Specifications**



**High Strength Steel with E-Coating and Black Epoxy Powdercoat, Stainless Steel Fasteners; All Hardware Included**



**Electropolished/Beadblasted Stainless Steel; 304 Stainless Steel Tubing, Stainless Steel Fasteners; All Hardware Included**



# ZTechnik® Engine Guards for R Series GS/R Series R



Z7103



## Touring, Comfort, and Convenience

**Z7101 Stainless Steel Engine Guards**  
*Fits 2004-09 R1200GS, 2007-10 R1200R.*

**Z7102 Stainless Steel Engine Guards**  
*Fits 2010-13 R1200GS (Oilcooled), 2011-13 R1200R.*

**Z7103 Stainless Steel Engine Guards**  
*Fits 2013-17 R1200GS/Adventure (Watercooled), 2015-17 R1200R.*

**Z7105 Stainless Steel Engine Guards**  
*Fits 1996-01 R850GS, 1993-98 R1100GS, 1995-00 R1100R, 1999-03 R1150GS, 2001-06 R1150R, 2003-06 Rockster.*

ZTechnik Engine Guards attach to the engine mounts – not the engine covers – to protect the motor's heads/valve covers. Integrated top brackets on each guard allow the rider to mount accessory lights, video cameras, or whatever they can imagine.

For greater comfort on longer rides, mount 1-inch clamp-on foot pegs to the Engine Guard's upper or forward sections.

ZTechnik Engine Guards are media blasted, then electropolished for a textured matte finish.

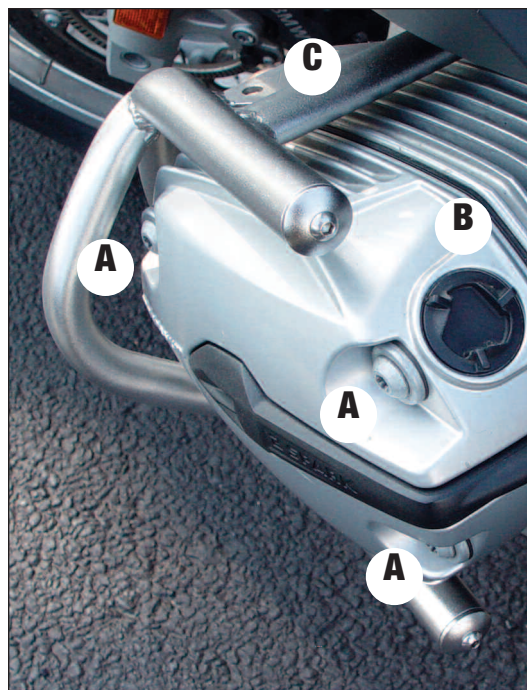
**NOTE:** Not compatible with ZTechnik or aftermarket exhaust headers, as they will not allow for installation of O<sup>2</sup> sensor.

**NOTE:** Z7105 will not work on models with twin spark motors.

## Materials and Specifications



Electropolished/Beadblasted Stainless Steel; 304 Stainless Steel Tubing, Stainless Steel Fasteners; All Hardware Included



## Maintenance-Friendly Design and a Handy Accessory Bracket

ZTechnik's Engine Guards are carefully designed to (A) allow clearance for valve cover access or (B) oil changes, so they don't need to be removed for routine maintenance. An integrated top bracket (C) on each Engine Guard allows you to mount aftermarket accessory lights, video cameras or whatever you can imagine (accessible on all but the R1200RT model).

TOURING, COMFORT,  
AND CONVENIENCE

R SERIES GS, R SERIES R

866-ZTECHNK (866-983-2465)

WWW.ZTECHNIK.COM





# ZTechnik® Great Ideas for All BMW® Motorcycles



## Touring, Comfort, and Convenience

### Z5505A License Plate Bracket Helmet Locks

*Fits All USA, Canadian and Australian Models.*

### Z5506 License Plate Bracket Helmet Locks

*Fits All Japanese Models.*

The ZTechnik Helmet Lock for BMW motorcycles uses the easily accessible license plate bracket to provide leave-behind security for two full-face helmets. A sturdy push-lock mechanism accepts D-ring or similar helmet closures.

The Helmet Lock is made from high strength steel with black powdercoat, and is furnished with two matched keys.

**Note:** Because the state of Wisconsin does not comply with SAE license plate standards, fitment of Wisconsin plates to the Z5505A is marginal. Wisconsin plates may be mounted, however only the top two holes will match the plates.



## Materials and Specifications



High Strength Steel with Black Epoxy Powdercoat;  
Uses Existing License Plate Hardware and Fasteners;  
Height: 6.50" (16.5cm); Width: 6.75" (17.1cm)

WWW.ZTECHNIK.COM



*There's room for storage beneath the tray, or remove the tray altogether for one large compartment*

*Three main zippered storage pockets plus document/map compartment on a removable tray*

## Touring, Comfort, and Convenience

### Z1210 Storage Pod

*Fits All Models.*

ZTechnik's extremely versatile 4-liter rear Storage Pod offers a stylish and practical way to carry the essentials. It features a Velcro® fastened, removable tray with three zippered storage pockets and a zippered document/map holder.



Sturdy double zippers keep everything secured inside while the Pod's web straps and rubber coated hooks attach it to the bike.

The dense thermo-molded Pod is covered with a durable canvas outside with a soft inner shell.

## Materials and Specifications



Durable Black Canvas Over a Thermo-Molded Pod;  
All Mounting Hardware Included; Height: 4.50-6.00" (11.4-15.2cm);  
Width: 9.00-12.50" (22.9-31.8cm); Length: 13.75" (35.0cm)

866-ZTECHNIK (866-983-2465)

TOURING, COMFORT,  
AND CONVENIENCE

MULTI-FIT





*ZTechnik was formed in 2000 to provide BMW riders with windscreens and accessories of OEM quality. Over the years, the ZTechnik brand has gained worldwide recognition, and our mission remains the same.*

*ZTechnik products are designed, engineered and manufactured by National Cycle, Inc. in the U.S.A. Our windscreen line is the finest you can buy. We start with the best materials and incorporate our state-of-the-art manufacturing technology. Each product is engineered directly on the bike for an OEM-quality fit and finish.*

*At ZTechnik, we think about every product from the rider's perspective. We measure the value of any accessory by how it increases the rider's enjoyment and whether it gives him or her more confidence and ability on the road.*

*ZTechnik is releasing new products almost every month of the year! This new catalogue provides up-to-date information for riders worldwide.*

*We get constant feedback from dealers and customers for new products and features. The ZTechnik Engineering and Production Teams are working hard to bring these to you and your customers!*

*Thank you for your support, and good riding!*

#### **ZTECHNIK CONTACT INFORMATION**

For Sales Assistance  
Call ZTechnik Toll Free (USA Only):  
**866-ZTECHNK (866-983-2465)**

Place Your Order Online  
**[www.ztechnik.com](http://www.ztechnik.com)**

**ZTechnik by National Cycle, Inc.**  
2200 S. Maywood Drive  
Maywood, IL 60153 USA

Phone: 708-343-0400  
Fax: 708-343-0625  
E-Mail: **[info@ztechnik.com](mailto:info@ztechnik.com)**



**National Cycle is ISO 9001 Certified.**

**\$2.50**  
**NC10002**  
**©2020-21 National Cycle, Inc.**