



Description:

POWERFORCE® Oil & Gas industry generators are designed to meet the rugged demands of the Oil & Gas industry environment, from exploration to production.

Each model has been designed to provide reliable continuous power for typical Oil & Gas industry electrical loads. All models are extensively tested to ensure they meet the performance requirements of the industry.

POWERFORCE® generators are packaged in our purpose built generator assembly and test facility. Each set goes through a fully documented test procedure before leaving our plant.

POWERFORCE® models utilize the PSI Natural Gas engines governed to run at 1800 rpm for long life and durability.

All Oil & Gas industry generators are designed and packaged as Prime Power Rated sets. See rating below for prime power kW.

Standard Features:

- Oil Makeup Tank - 5 Gallon Kenco
- Air Filter System - Single Stage Replaceable Filter
- Gas Treatment - Gas Max GMFGS24 Scrubber
- Dual Fuel - LPG, NG, Wellhead NG Compatible with Auto Switch
- Exhaust System: Catalyst and USFS Spark Arrestor
- Lubrication - Murphy/Kenco Oil Replenishment
- Basler DCG2020HD Generator Controller
- Safety Shutdown - Low Oil Pressure; Low Coolant Level, High Oil Temp

Optional Equipment:

- Block Heater - Kim Hotstart 6000W; 7.2A; 480V
- Cold Weather Options - CCV, Fuel Train, Scrubber Available

POWER RATINGS	STANDBY		PRIME	
Gaseous Fuel	kW	kVA	kW	kVA
LPG	192.0	240.0	175.0	218.8
Natural Gas (NG)	300.0	375.0	260.0	325.0
Amperage 0.8 PF 480V	451		391	

ENGINE SPECIFICATION:

Manufacturer	PSI
Model	D14.6L
Emissions	US EPA Certified
Engine speed (rpm)	1800
Max. HP Power 1800 rpm	459 per ISO3046
Cylinder arrangement	V-12
Combustion system	Stoichiometric
Aspiration	Turbocharged
Engine type	Diesel Derivative
Fuel	Natural Gas / LPG
Number of Cylinders	12
Displacement in³ (liters)	14.6
Bore and Stroke inches (mm)	5.04x5.04 128x128
Cooling	Coil and Tube
Governor	Integrated Isochrones
Starting aids	None
Compression ratio	10.5:1
Air cleaner type	Dry
Exhaust Silencer dBA	USFS Spark Arrestor
Fuel switch	Automatic

ENGINE ELECTRICAL SYSTEM:

Starting motor voltage	24DCV
Charger Amps	45
Battery Ampere Hours	150AH/900CCA

ALTERNATOR:

Configuration	4 Pole 3 Phase/NEMA Class H Insulation
Frequency	60HZ
Voltage regulation	Automatic
No load to full load voltage regulation	Digital
Coupling	Direct
Bearing	Single
Manufacturer	Marathon
Model	432CSL6212
Load acceptance	100 % Single Step
Compliance	NEMA, IEEE, CSA
Construction	Single Bearing Marine Insulation

The image shows the front panel of a Digital Genset Controller (DGC-2020HD). The interface includes a digital display, several status LEDs, and control buttons.

Display: The display shows the following information:

- Units:** VOLT, AMP, PH, Hz
- Mode:** NOT IN AUTO
- Diagram:** A diagram showing the generator (G) connected to the load (L) via a circuit breaker (GG).
- Values:** 150, 100, 320, 0.00
- Labels:** OIL, FUEL, TEMP, BATT

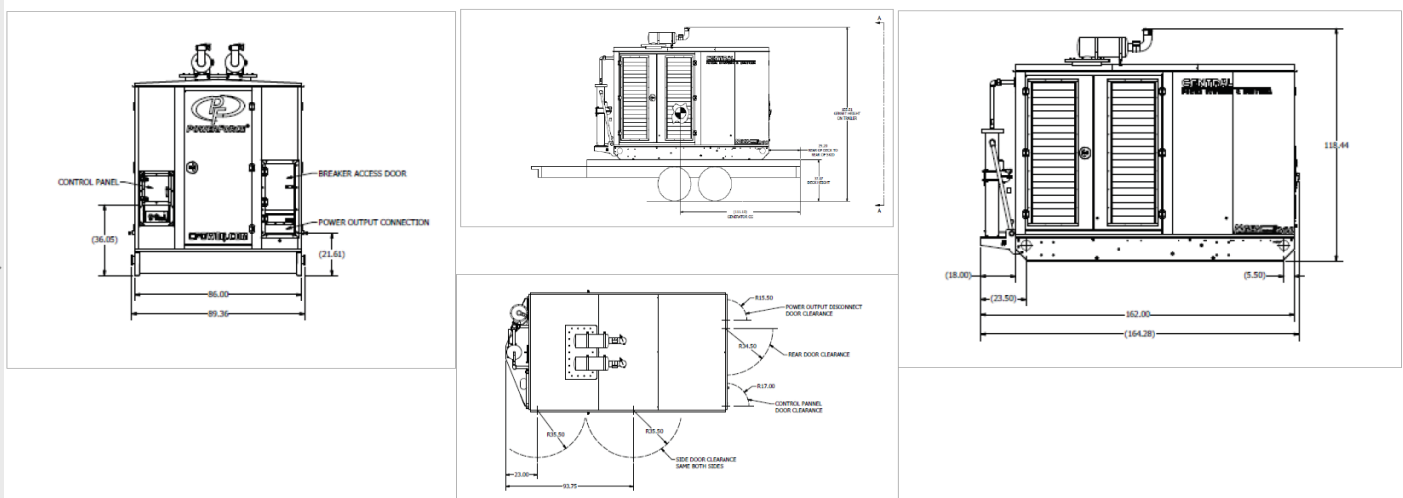
Controls and Indicators:

- Navigation:** Four arrow buttons (Up, Down, Left, Right) and a **Reset** button.
- Supplying Load:** A button with a checkmark icon and a corresponding input field.
- Alarm:** A button with a triangle icon and a corresponding input field.
- Not In Auto:** A button with a cross icon and a corresponding input field.
- Alarm Silence:** A button with a crossed-out alarm icon.
- Lamp Test:** A button with a crossed-out lamp icon.
- Run:** A button with a vertical bar icon.
- Off:** A button with a circle icon.
- Auto:** A button with a power icon.

Except as may be expressly covered under applicable manufacturer(s) parts/product warranty, Central Power Systems & Services (CPS&S) liability arising out of service, repairs, or workmanship shall not exceed the cost of the original repair or service. Further, under no circumstances shall CPS&S be liable for incidental, consequential or other economic loss damages to customer. This includes but may not be limited to loss of use of equipment or vehicle, down time, inconvenience, cargo damage, overtime or any other costs or expenses resulting from services, repairs or workmanship.

- NFPA-110 compliant
- User friendly, fully-configurable, programmable, microprocessor based logic controller
- Off-line Simulator Best-logic™ helps identify and troubleshoot the logic
- High contrast display is easy to read outdoors

DIMENSIONS, WEIGHTS & SOUND LEVELS



POWERFORCE.COM-3305 South West St Wichita, KS 67217 316-789.7370 Info@CPower@Com **MODEL# NGEN260**