

## Which Baby Moon Hubcaps Will Fit My Wheel?



Nubs Point Away  
From the Hub

Nubs Point Toward  
the Hub



### 3 or 4 Outside Bumps

(bumps facing toward the hub)

(nubs) on the Wheel Flange

8 23/32" = 's IMP-M8  
9 5/16" = 's IMP-M9  
10 1/8" = 's IMP-M10  
11 5/8" = 's IMP-M12  
11 3/4" = 's IMP-M12



### 3 or 4 Inside Bumps

(bumps facing toward the hub)

(nubs) on the Wheel Flange

7" = 's rc1m  
7 1/2" = 's rc2m  
8 1/8" = 's 01AS-1130-SS



## Wheel with 3-6 Clips

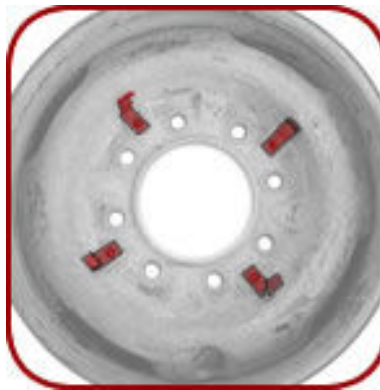


**Airstream Travel Trailer**  
6 Lug Wheels With  
3 - 6 Hubcap Clips



1940 to 1975 Airstream  
Trailer Baby Moons.  
1940 - 1963 Chevy trucks  
1940 - 1948 Chevy  
passenger cars

L159

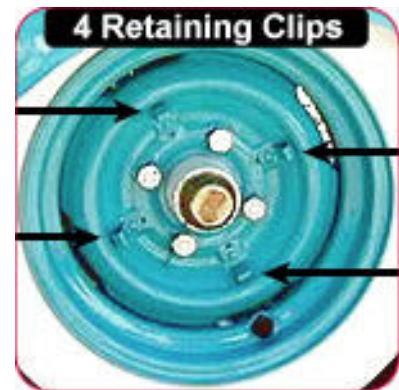


**47'-70' Chevy Truck**  
8 Lug Wheels With  
Baby Moon Retention  
Clips on the Wheel.



1947 to 1970 Chevy  
Baby Moons.  
Fits  $\frac{3}{4}$  ton and 1 ton  
trucks, 3600, 3800 series,  
c30 and c20 Trucks

Go to HubCapMike.com  
For your specific vehicle



**Tee Nee, Holsclaw,  
Gator and Dilly trailers.**  
These 12" wheels were  
used for Crosley cars and  
by General Tire in the  
1950's - 1960's.

Go to HubCapMike.com  
For more information

L16

8 \_\_\_\_\_

7 \_\_\_\_\_

6 \_\_\_\_\_

5 \_\_\_\_\_

4 \_\_\_\_\_

3 \_\_\_\_\_

2 \_\_\_\_\_

1 \_\_\_\_\_

IMP-M12

IMP-10

IMP-9-3/4

IMP-M9

IMP-M8

O1AS-1130-SS

## Instructions

Check printer settings:

- Turn off fit to page
- Use 8.5x11 Ltr setting

Print a sample and compare scale to a ruler. If they do not match adjust your page or printer settings.

Print two copies. Rotate one copy 180 degrees, then overlay the vertical lines, match up the arcs and tape together.

If you have the hubcap overlay it onto the template. Otherwise, overlay onto the wheel to help find the correct hubcap for your wheel. Note: Cut holes in the template to help align the circles to the wheel bumps (see pic below).

