



FIELD LOADER CONVEYOR

EQUIPMENT REVISION :01A



PARTS MANUAL

Document: MD-09-06-5018

Revision: A1

Effective Date: 04-2020



INTRODUCTION

Thank you for choosing USC, LLC for your equipment needs. We appreciate your business and will work diligently to ensure that you are satisfied with your choice.

OVERVIEW

The purpose of this manual is to provide you with the basic information needed to operate and maintain the Field Loader Conveyor. It does not hold USC, LLC liable for any accidents or injuries that may occur.

The technical information provided in this document is based on extensive testing under controlled conditions at the USC research and development facility. This information is given without guarantee as the conditions of operation and storage of the equipment are beyond our control. Variables such as temperature, humidity, viscosity of chemical products and changes in seed size or variety may all effect the accuracy of application and seed coverage. Periodically check the equipment calibration while treating and make adjustments as required. This will insure the optimum seed coverage.

OPERATOR RESPONSIBILITIES

As the purchaser/owner/operator of this equipment and control system, you have an obligation to install, operate, and maintain the equipment in a manner that minimizes the exposure of people in your care to any potential hazards inherent in using this equipment. It is critical that the owner of this equipment:

- Has a clear and documented understanding of the process this machine is being used in and of any resulting hazards or special requirements arising from this specific application.
- Allow only properly trained and instructed personnel to install, operate or service this equipment.
- Maintain a comprehensive safety program involving all who work with this machine and other associated process equipment.
- Establish clear areas of staff responsibility (e.g. operation, setup, sanitation, maintenance, and repairs).
- Provide all personnel with necessary safety equipment.
- Periodically inspect the equipment to insure that the doors, covers, guards, and safety devices are in place and functioning, that all safety instructions and warning labels are intact and legible, and that the equipment is in good working order.
- In addition to the operating instructions, observe and enforce the applicable legal and other binding regulations, national and local codes.

FIELD LOADER CONVEYOR

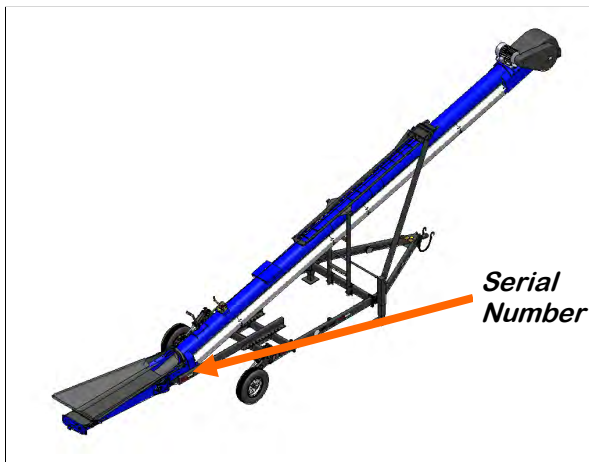
As the person with the most to gain or lose from working safely, it is important that you work responsibly and stay alert. By following a few simple rules, you can prevent an accident that could injure or kill you or a co-worker.

- Disconnect, lockout, and tagout electrical and all other energy sources before inspecting, cleaning, servicing, repairing, or any other activity that would expose you to the hazards of electrical shock.
- Do not operate, clean, or service this equipment until you have read and understood the contents of this manual. If you do not understand the information in this manual, bring it to the attention of your supervisor, or call your authorized dealer.
- Any operator who is known or suspected to be under the influence of alcohol or drugs should not be allowed to operate the equipment.
- Understand and follow the safety practices required by your employer and this manual.
- **PAY ATTENTION** to what you and other personnel are doing and how these activities may affect your safety.
- **Failure to follow these instructions may result in serious personal injury or death.**

RECEIVING YOUR EQUIPMENT

As soon as the equipment is received, it should be carefully inspected to make certain that it has sustained no damage during shipment and that all items listed on the packing list are accounted for. If there is any damage or shortages, the purchaser must immediately notify USC, LLC. Ownership passes to purchaser when the unit leaves the USC, LLC. premises. The purchaser is responsible for unloading and mounting all components of the equipment.

Document the serial number of the machine for future reference. The serialization label is located on the inlet end the conveyor near the transition.



SERIAL NUMBER: _____

TABLE OF CONTENTS

<u>Section</u>	<u>Contents</u>	<u>Page #</u>
Section A	Safety Instructions	5
Section B	Mechanical Drawings	20
	Index by Part Number.....	66
Section C	Limited Warranty	68

SAFETY INSTRUCTIONS

SECTION A

Every year accidents in the work place maim, kill and injure people. Although it may be impossible to prevent all accidents, with the right combination of training, operating practices, safety devices and operator vigilance, the number of accidents can be significantly reduced. The purpose of this section is to educate equipment users about hazards, unsafe practices and recommended hazard avoidance techniques.

SAFETY WORDS AND SYMBOLS

It is very important that operators and maintenance personnel understand the words and symbols that are used to communicate safety information. Safety words, their meaning and format, have been standardized for U.S. manufacturers and published by the American National Standards Institute (ANSI). The European Community (E.C.) has adopted a different format based on the International Standards Organization (I.S.O.) and applicable machinery directives. Both formats are presented below. Graphic symbols are not standardized but most manufacturers will use some variation of the ones seen in this manual.



Indicates an imminently hazardous situation which, if not avoided, **will** result in death or serious injury.



Indicates a potentially hazardous situation which, if not avoided, **could** result in death or serious injury.



Indicates a potentially hazardous situation which, if not avoided, **may** result in minor or moderate injury and/or property damage.



Provides additional information that the operator needs to be aware of to avoid a potentially hazardous situation.



Mandatory Lockout Power Symbol. Disconnect, lockout and tag-out electrical and other energy sources before inspecting, cleaning or performing maintenance on this panel.



International Safety Alert Symbol. The exclamation point (!) surrounded by a yellow triangle indicates that an injury hazard exists. However, it does not indicate the seriousness of potential injury. The exclamation point (!) is also used with the DANGER, WARNING and CAUTION symbols so the potential injury is indicated.



Electrocution Hazard Symbol. This symbol indicates that an electrocution hazard exists. Serious injury or death could result from contacting high voltage.



International Electrocution Hazard. This symbol indicates that an electrocution hazard exists. Serious injury or death could result from contacting high voltage.



Mandatory Read Manual Action Symbol. (I.S.O. format) This symbol instructs personnel to read the Operators Manual before servicing or operating the equipment.



Mandatory Read Manual Action Symbol. This symbol instructs personnel to read the Operators Manual before servicing or operating the equipment.

NOTICE

Notice is used to notify people of important installation, operation or maintenance information which is not hazard related.

LOCKOUT / TAGOUT PROCEDURES

Lockout/Tagout is the placement of a lock/tag on an energy isolating device in accordance with an established procedure. When taking equipment out of service to perform maintenance or repair work, always follow the lockout/tagout procedures as outlined in ANSI Z344.1 and/or OSHA Standard 1910.147. This standard “requires employers to establish a program and utilize procedures for affixing appropriate lockout devices or tagout devices to energy isolating devices and to otherwise disable machines or equipment to prevent unexpected energizing, start-up, or release of stored energy in order to prevent injury to employees.”

CONTROLLED STOP

This is the stopping of machine motion by reducing the electrical command signal to 0 (zero) once the stop signal has been recognized.

HAZARD REVIEW

Electrocution Hazard



Electrocution accidents are most likely to occur during maintenance of the electrical system or when working on or near exposed high voltage wiring. This hazard does not exist when the electrical power has been disconnected, properly locked, and tagged out.

Automatic Start Hazard



This equipment may be controlled by an automated system and may start without warning. Failure to properly disconnect, lockout, and tagout all energy sources of remotely controlled equipment creates a very hazardous situation and could cause injury or even death. PLEASE STAY CLEAR AND BE ALERT.

YOU are responsible for the **SAFE** operation and maintenance of your USC, LLC equipment . **YOU** must ensure that you and anyone else who is going to operate, maintain or work around the equipment be familiar with the operating and maintenance procedures and related **SAFETY** information contained in this manual. This manual will take you step-by-step through your working day and alert you to good safety practices that should be adhered to while operating the equipment

Remember, **YOU** are the key to safety. Good safety practices not only protect you, but also the people around you. Make these practices a working part of your safety program. Be certain that **EVERYONE** operating this equipment is familiar with the recommended operating and maintenance procedures and follows all the safety precautions. Most accidents can be prevented. Do not risk injury or death by ignoring good safety practices.

- Equipment owners must give operating instructions to operators or employees before allowing them to operate the machine, and at least annually thereafter per OSHA (Occupational Safety and Health Administration) regulation 1928.57.
- The most important safety device on this equipment is a **SAFE** operator. It is the operator's responsibility to read and understand **ALL** Safety and Operating instructions in the manual and to follow them. All accidents can be avoided.
- A person who has not read and understood all operating and safety instructions is not qualified to operate the machine. An untrained operator exposes himself and bystanders to possible serious injury or death.
- Do not modify the equipment in any way. Unauthorized modification may impair the function and/or safety and could affect the life of the equipment.
- Think SAFETY! Work SAFELY!

GENERAL SAFETY

1. Read and understand the operator's manual and all safety labels before operating, maintaining, adjusting or unplugging the equipment .
2. Only trained persons shall operate the equipment . An untrained operator is not qualified to operate the machine.
3. Have a first-aid kit available for use should the need arise, and know how to use it.



4. Provide a fire extinguisher for use in case of an accident. Store in a highly visible place.
5. Do not allow children, spectators or bystanders within hazard area of machine.
6. Wear appropriate protective gear. This includes but is not limited to:
 - A hard hat
 - Protective shoes with slip resistant soles
 - Protective goggles
 - Heavy gloves
 - Hearing protection
 - Respirator or filter mask
7. Place all controls in neutral or off, stop motor, and wait for all moving parts to stop. Then disable power source before servicing, adjusting, repairing, or unplugging.
8. Review safety related items annually with all personnel who will be operating or maintaining the equipment.

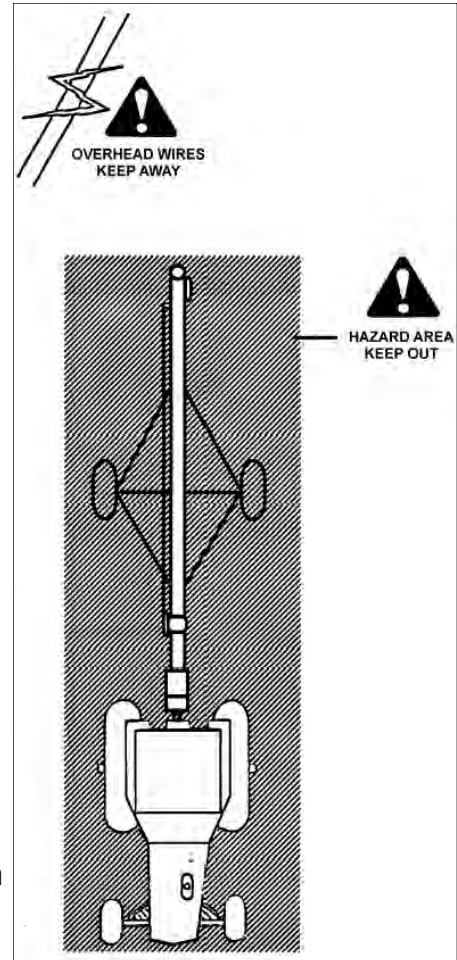


OPERATING SAFETY:

1. Read and understand the operator's manual and all safety labels before using.
2. Disconnect and disable electrical supply completely and wait for all moving parts to stop before servicing, adjusting, repairing or unplugging.
3. Clear the area of bystanders, especially children, before starting.
4. Be familiar with the machine hazard area. If anyone enters hazard area, shut down machine immediately. Clear the area before restarting.
5. Keep hands, feet, hair and clothing away from all moving and/or rotating parts.
6. Stay away from overhead obstructions and power lines during operation and transporting. Electrocutation can occur without direct contact.
7. Do not operate machine when any guards are removed.
8. Inspect welds and repair if needed.

TRANSPORT SAFETY

1. Read and understand ALL the information in the operator's manuals regarding procedures and SAFETY when moving or transporting the conveyor.
2. Check with local authorities regarding conveyor transport on public roads. Obey all applicable laws and regulations.
3. Always travel at a safe speed. Use caution when making corners or meeting traffic.
4. Make sure the SMV (Slow Moving Vehicle) emblem and all the lights and reflectors that are required by the local highway and transport authorities are in place, are clean and can be seen clearly by all overtaking and oncoming traffic.
5. Do not allow riders on the conveyor or the towing vehicle when transporting.
6. Attach conveyor to towing vehicle with a pin and retainer.
7. Lower conveyor to its lowest position for transporting.
8. Keep to the right and yield the right-of-way to allow faster traffic to pass. Drive on the road shoulder, if permitted by law.
9. Do not exceed 25 m.p.h. (40 km/h). Reduce speed on rough roads and surfaces.
10. Stay away from overhead obstructions and power lines when transporting. Electrocutation can occur without direct contact.
11. Always use hazard warning flashers on tractor when transporting unless prohibited by law.



PLACEMENT SAFETY

1. Move only with the appropriate equipment
2. Stay away from overhead power lines when moving the conveyor. Electrocutation can occur without direct contact.
3. Be familiar with machine hazard area. If anyone enters hazard areas, shut down machine immediately. Clear the area before restarting.
4. Operate the conveyor on level ground free of debris. Anchor the conveyor to prevent tipping or upending.

TIRE SAFETY

1. Failure to follow proper procedures when mounting a tire on a wheel or rim can produce an explosion which may result in serious injury or death.
2. Do not attempt to mount a tire unless you have the proper equipment and experience to do the job.
3. Have a qualified tire dealer or repair service perform required tire maintenance.
4. When replacing worn tires, make sure they meet the original tire specifications. Never undersize.



Before placement of the conveyor, be sure that ground is reasonably level. The conveyor may topple or work improperly if the ground is too uneven, damaging the equipment and/or causing personal injury.



When releasing the conveyor from the towing vehicle, test the intake end for downward weight. Do not raise the intake end above drawbar height. When the intake end is elevated too high with machine in raise position, the balance of weight quickly transfers to the discharge end,

MAINTENANCE SAFETY

1. Review the operator's manual and all safety items before working with, maintaining or operating the equipment.
2. Place all controls in neutral or off, stop motors, disable power source, and wait for all moving parts to stop before servicing, adjusting, repairing or unplugging.
3. Follow good shop practices:

Keep service area clean and dry.

Be sure electrical outlets and tools are properly grounded.

Use adequate light for the job at hand.

4. Keep hands, feet, hair and clothing away from all moving and/or rotating parts.
5. Clear the area of bystanders, especially children, when carrying out any maintenance and repairs or making any adjustments.
6. Before resuming work, install and secure all guards when maintenance work is completed.
7. Keep safety signs clean. Replace any sign that is damaged or not clearly visible.



SAFETY LABELS

1. Keep safety labels clean and legible at all times.
2. Replace safety labels that are missing or have become illegible.
3. Replaced parts that displayed a safety label should also display the current label.
4. Replacement safety labels are available. Contact your authorized dealer.

How to Install Safety Labels:

- Be sure that the installation area is clean and dry.
- Be sure temperature is above 50°F (10°C).
- Decide on the exact position before you remove the backing paper.
- Remove the smallest portion of the split backing paper.
- Align the sign over the specified area and carefully press the small portion with the exposed sticky backing in place.
- Slowly peel back the remaining paper and carefully smooth the remaining portion of the sign in place.
- Small air pockets can be pierced with a pin and smoothed out using the piece of sign backing paper.



Located on the USC equipment you will find safety labels. Always be sure to read and follow all directions on the labels.

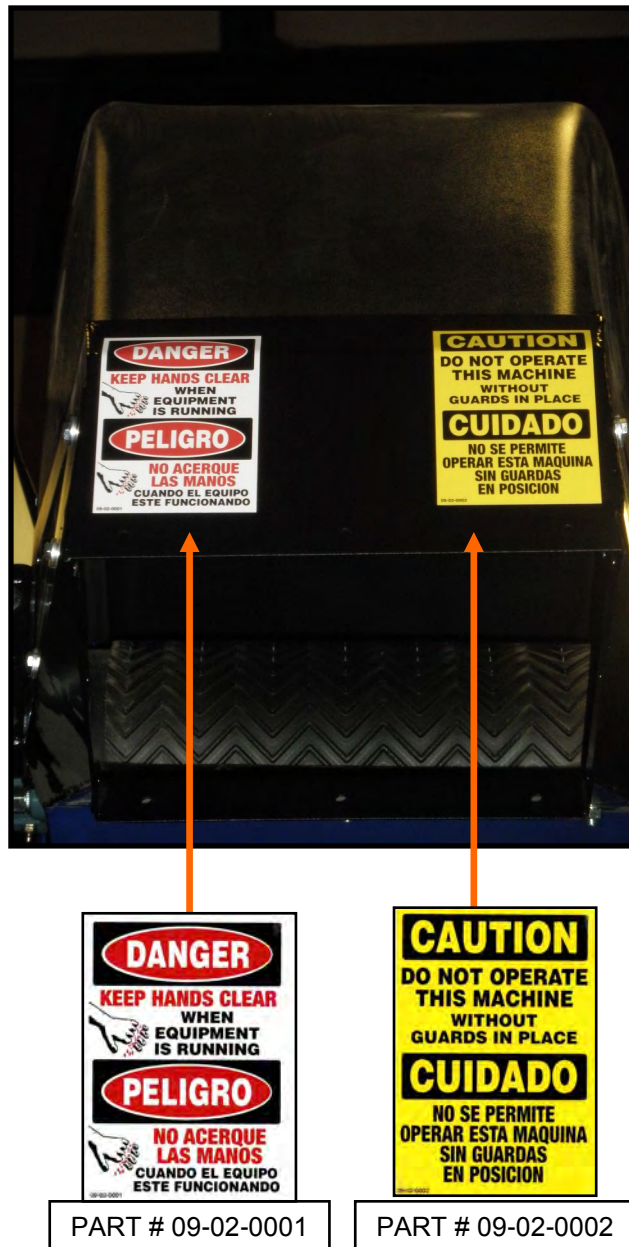


Guards provided with USC equipment are to remain in place during operation.

FIELD LOADER CONVEYOR

Think **SAFETY!** Work **SAFELY!**

REMEMBER—If safety labels have been damaged, removed, become illegible, or parts replaced without safety labels, new labels must be applied. New safety labels are available from your authorized dealer.



FIELD LOADER CONVEYOR



PART # 09-02-0009



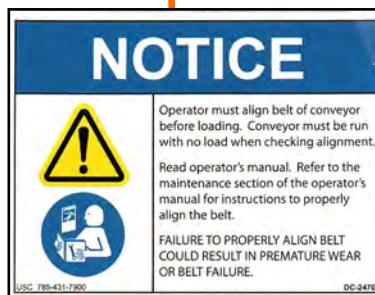
PART # 09-02-0011

Located
Under
guard



PART # 09-02-0012

FIELD LOADER CONVEYOR

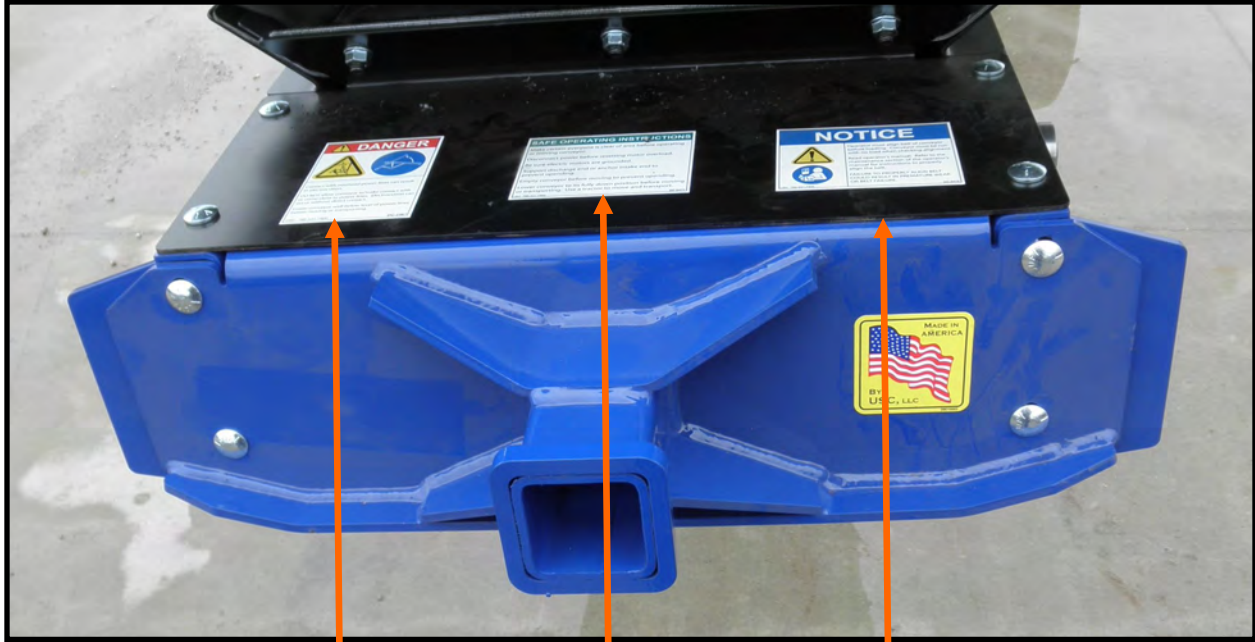


PART # 09-02-0031

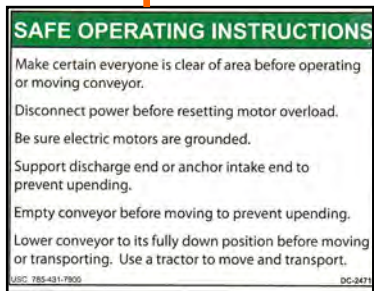


PART # 09-02-0015

FIELD LOADER CONVEYOR



PART # 09-02-0008



PART # 09-02-0032

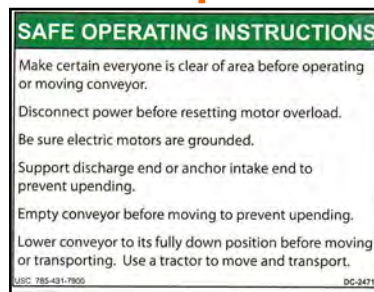


PART # 09-02-0031



PART # 09-02-0027

FIELD LOADER CONVEYOR



PART # 09-02-0032



PART # 09-02-0028

FIELD LOADER CONVEYOR



PART # 09-02-0027

FIELD LOADER CONVEYOR

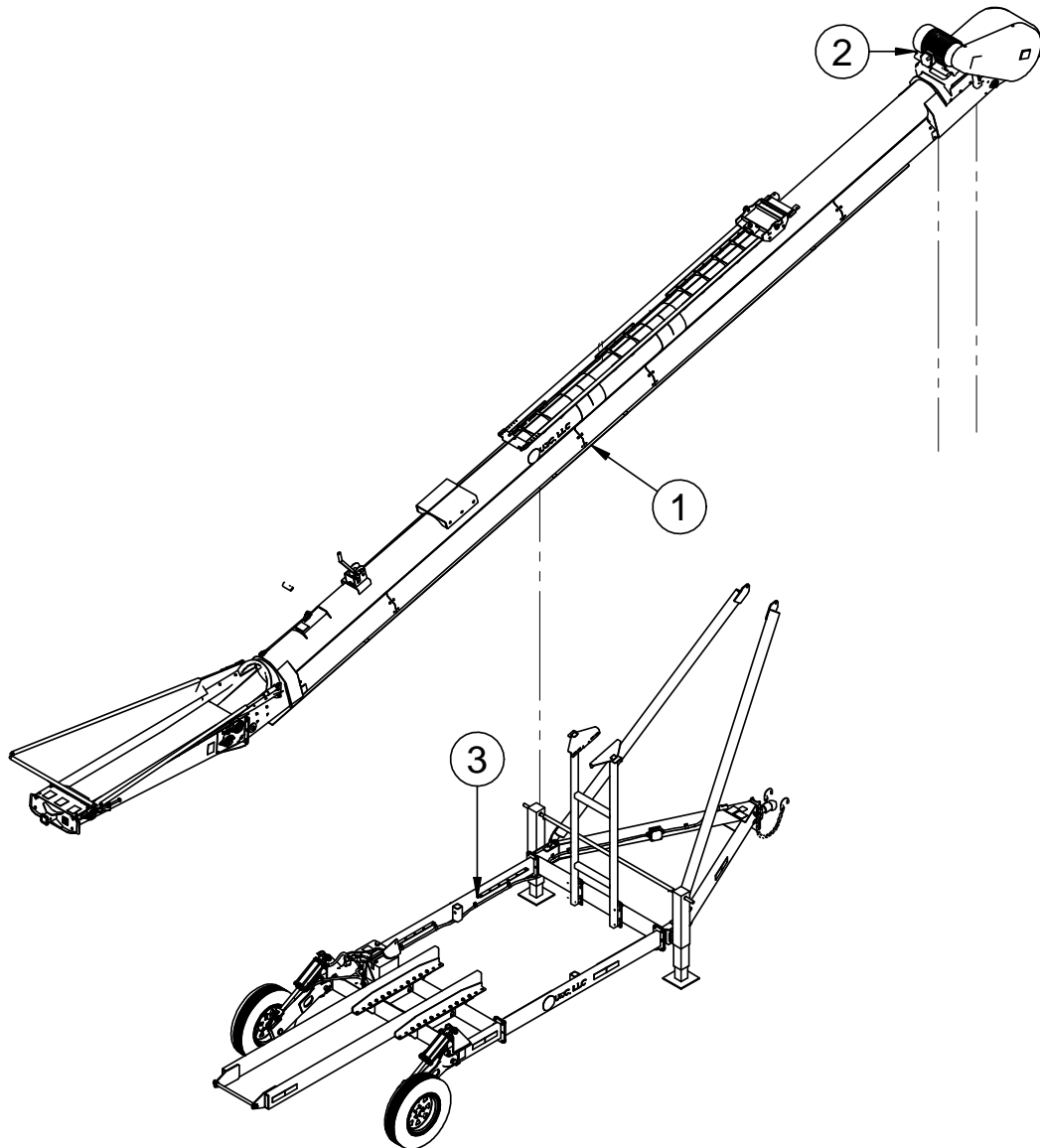


PART # 09-02-0033

SECTION B MECHANICAL DRAWINGS

The following pages show the parts of the Field Loader conveyor. Please have the serial number and part number ready when ordering parts.

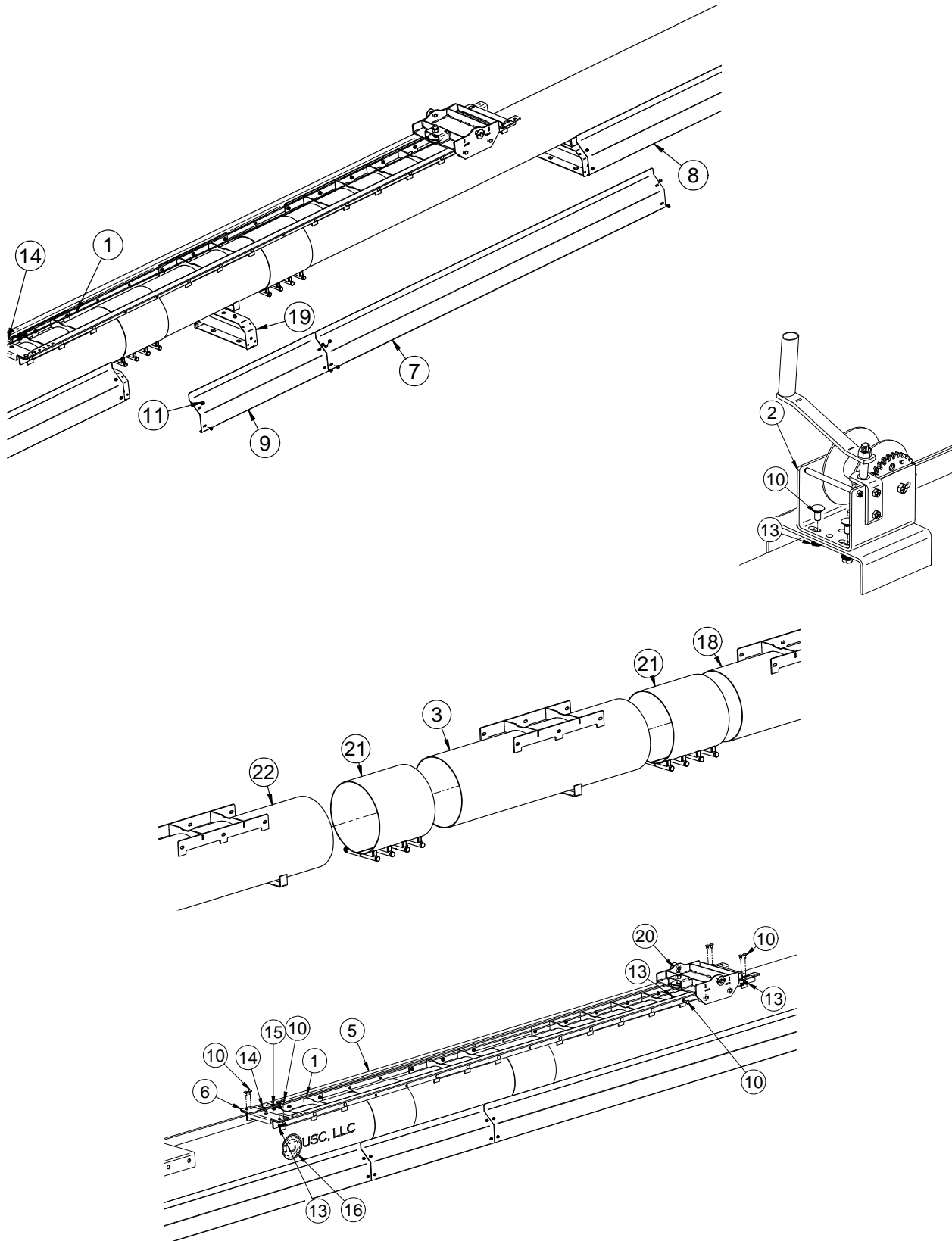
STANDARD ASSEMBLY



Item #	Description	See Page
1	ASSY FL3 CONVEYOR BASE	21—50
2	MOTORS AND DRIVE KITS	26—37
3	UNDERCARRIAGE AND TRAILER	50—62
4	OPTIONAL EQUIPMENT	63—65

FIELD LOADER CONVEYOR

ASSEMBLY FIELD LOADER CONVEYOR (13-08-0925 REV A0)

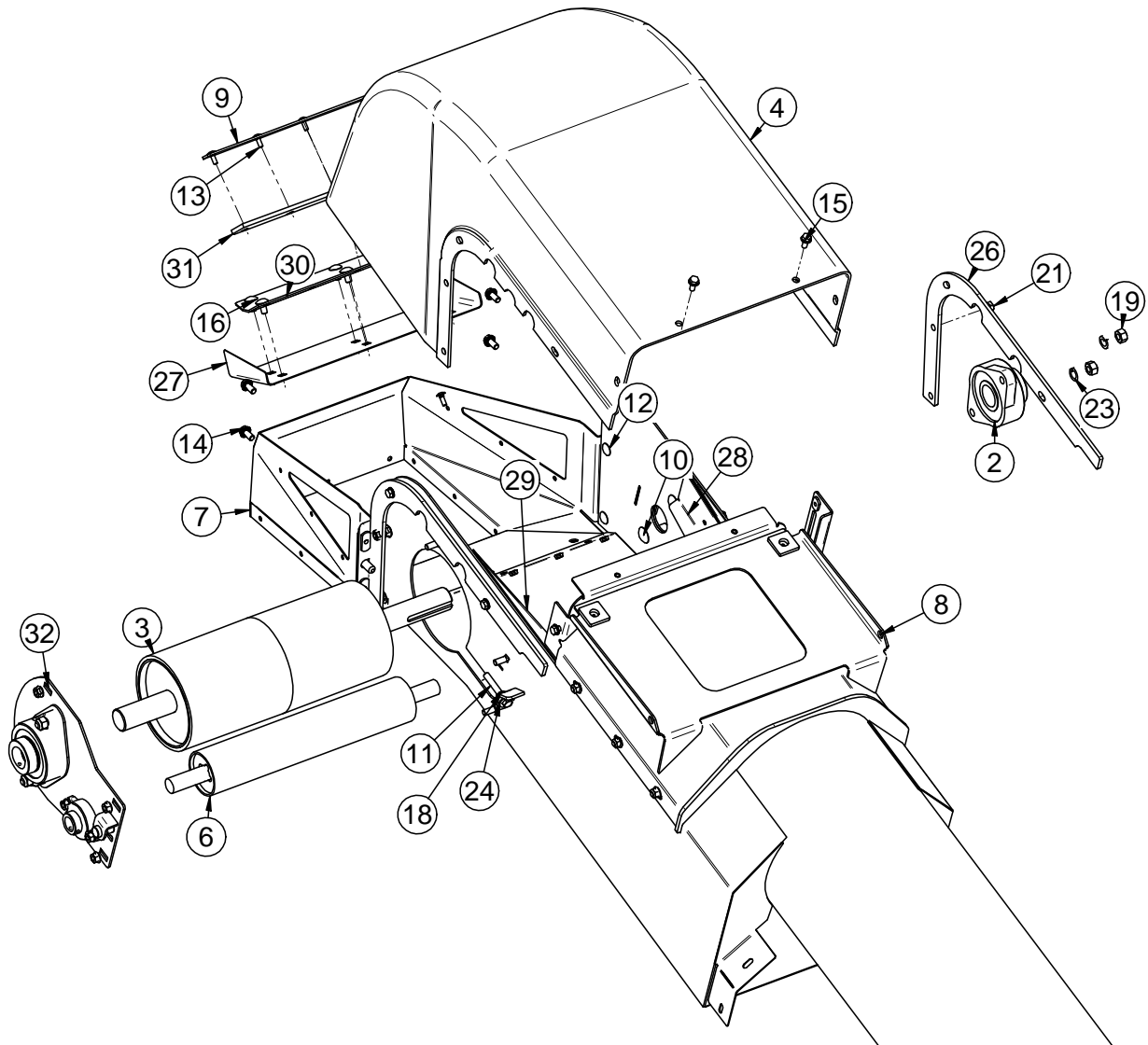


FIELD LOADER CONVEYOR

ASSEMBLY FIELD LOADER CONVEYOR (13-08-0925 REV A0)

PART #		13-05-0925 REV A0		
Item #	Part #	Description	Qty	See Page
1	01-04-0031	WIRE ROPE .250 DIA 7 X 19 CLASS STR	29	
2	01-08-0157	DUTTON-LAINSON WG1500	1	
3	05-08-0879-17	WDMT TUBE 12IN MID 35FT FL3	1	
4	05-10-4909-11	PLT STOP SLIDE TOP FL3	1	
5	05-10-4910-11	PLT SLIDE BENT FL3	2	
6	05-10-4911-11	PLT STOP SLIDE LOWER FL3	1	
7	05-10-4914	GRD BELT RETURN SIDE	4	
8	05-10-4938	GRD BELT RETURN END	4	
9	05-10-4939	GRD BELT RETURN SIDE	2	
10	06-01-0153	BOLT CRG .375-16X.750 ZP SHORT NECK	38	
11	06-01-0299	BOLT FLG .250-20 X .500 ZP GR5	40	
12	06-03-0013	NUT LOCK FLG .250-20 ZP GR5	9	
13	06-03-0014	NUT LOCK FLG .375-16 ZP GR5	38	
14	06-07-0023	THIMBLE .250 WIRE ROPE HD	1	
15	06-07-0026	CBL CLIP ROPE .313	2	
16	11-02-0268	BELT CRES FL3 35FT	1	
17	13-05-0901	ASSY HEAD FL3	1	23
18	13-05-0902	ASSY RETURN ROLLER FL3	4	38
19	13-05-0903	ASSY SLIDE TOP MNT	1	39
20	13-05-0915	ASSY CLMP 4 BOLT 12IN ID CS FL3	2	40
21	13-08-0923	ASSY INLET FL3	1	41

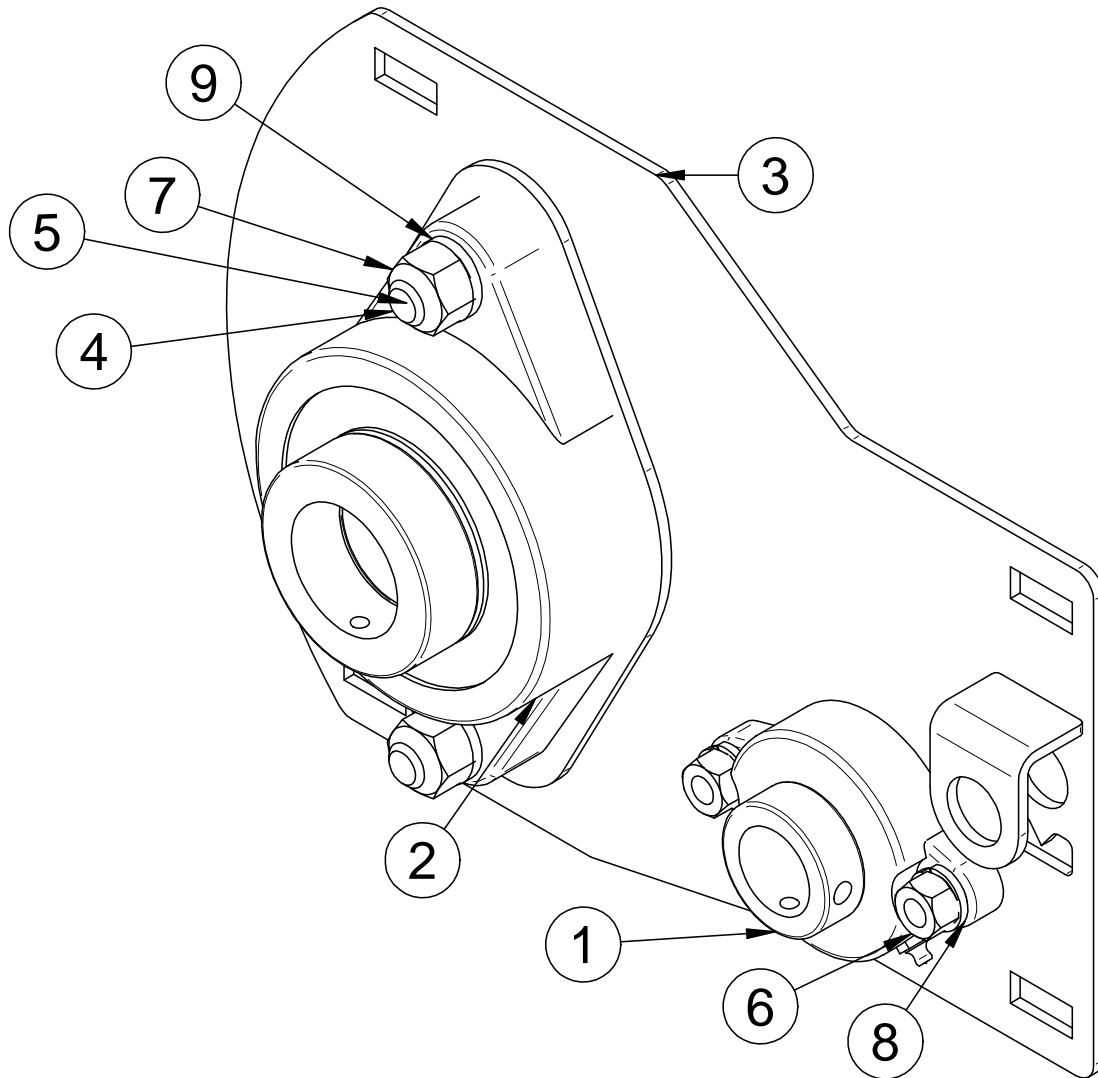
ASSEMBLY HEAD FIELD LOADER CONVEYOR (13-05-0901 REV A0)



FIELD LOADER CONVEYOR

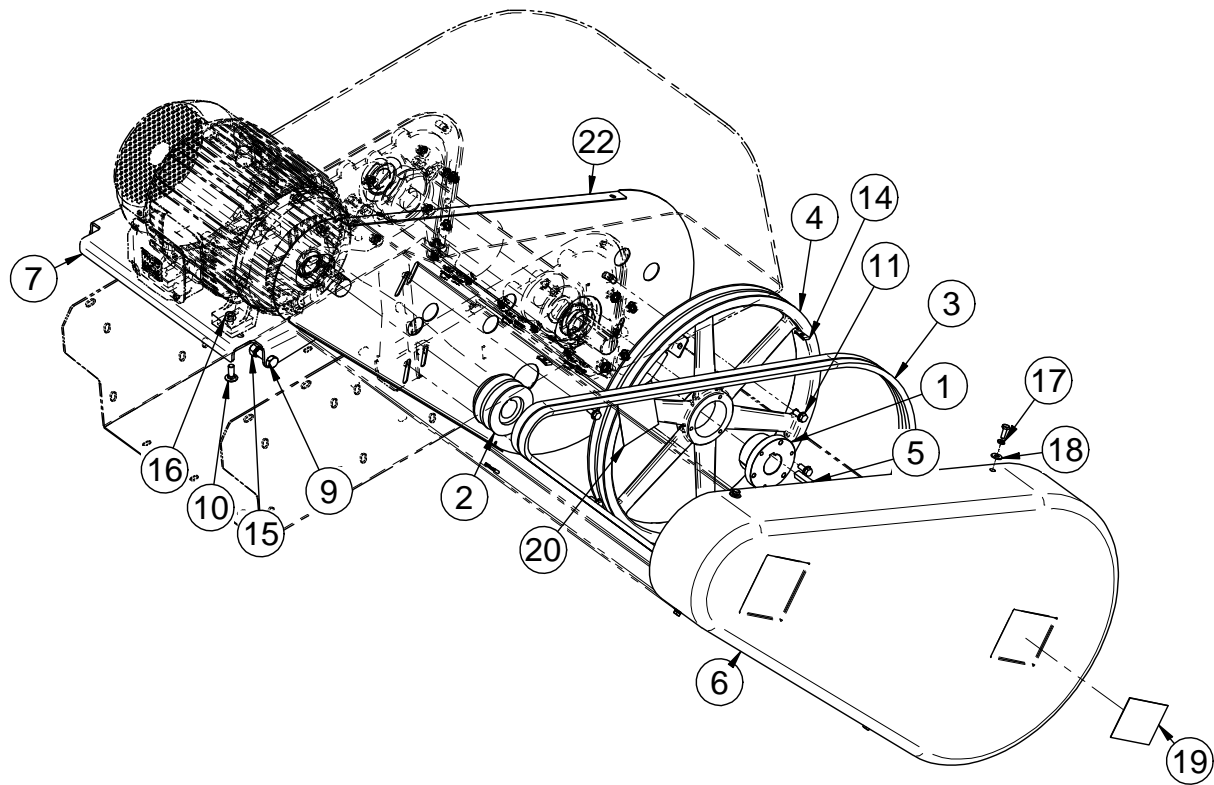
ASSEMBLY HEAD FIELD LOADER CONVEYOR (13-05-0901 REV A0)

PART #		13-05-0901 REV A0		
Item #	Part #	Description	Qty	See Page
1	01-03-0042	BRG FLG MNT 1.000ID 2BOLT ECNTRC	1	
2	01-03-0077	BRG FLG MNT 1.500ID 2BOLT ECNTRC	1	
3	01-08-0138	PULLEY HD 6.50 DIA X 15.50L LG BRG	1	
4	05-06-0128	CVR HD TS35 DD	1	
5	05-08-0568	WDMT DSCHG HD MNT PLT	2	
6	05-08-0853	WDMT SNUB ROLLER 3 IN	1	
7	05-08-0856	WDMT DSCHG HD SPOUT 12	1	
8	05-08-0870-17	WDMT OUTLET FL3	1	
9	05-10-3986	PLT S2000 CNVR BLT SCRAPER HLDR	1	
10	06-01-0026	BOLT CRG .500-13 X 1.75 ZP GR5	2	
11	06-01-0071	BOLT .375-16 X 2.50 ZP GR5	1	
12	06-01-0115	BOLT CRG .375-16 X 1.00 ZP GR5	9	
13	06-01-0122	BOLT CRG .250-20 X .750 ZP GR5	5	
14	06-01-0124	BOLT FLG .375-16 X .750 ZP GR5	4	
15	06-01-0138	BOLT FLG .3125-18 X .750 ZP GR5	4	
16	06-01-0153	BOLT CRG .375-16X.750 ZP SHORT NECK	1	
17	06-01-0343	BOLT FLG .3125-18 X 1.25 ZP GR5	4	
18	06-02-0003	NUT FULL .375-16 ZP GR5	3	
19	06-02-0004	NUT FULL .500-13 ZP GR5	2	
20	06-03-0013	NUT LOCK FLG .250-20 ZP GR5	5	
21	06-03-0014	NUT LOCK FLG .375-16 ZP GR5	2	
22	06-04-0003	WSHR LOCK SPLT .375 ZP	2	
23	06-04-0004	WSHR LOCK SPLT .500 ZP	2	
24	06-05-0004	WSHR FLAT .375 ZP	2	
25	104079	PIN TRACKING PIVOT	1	
26	106987	PLT HD REINF TS35	2	
27	106989	RBBR SEAL HD TS35	1	
28	106CE2	OUTLET TRANS HALF RH FL45	1	
29	106CE3	OUTLET TRANS HALF LH FL45	1	
30	106CEA	SCRAPER BRKT FL45	1	
31	106CEB	RBBR SCRAPER FL45	1	
32	13-05-0844-17	ASSY BEARING ADJ FL45	1	25

ASSEMBLY BEARING ADJUSTER (13-05-0844-17 REV A0)

PART #		13-05-0844-17 REV A0	
Item #	Part #	Description	Qty
1	01-03-0042	BRG FLG MNT 1.000ID 2BOLT ECNTRC	1
2	01-03-0077	BRG FLG MNT 1.500ID 2BOLT ECNTRC	1
3	05-08-0850-17	WDMT BEARING ADJ FL45	1
4	06-01-0026	BOLT CRG .500-13 X 1.75 ZP GR5	2
5	06-01-0115	BOLT CRG .375-16 X 1.00 ZP GR5	2
6	06-02-0003	NUT FULL .375-16 ZP GR5	2
7	06-02-0004	NUT FULL .500-13 ZP GR5	2
8	06-04-0003	WSHR LOCK SPLT .375 ZP	2
9	06-04-0004	WSHR LOCK SPLT .500 ZP	2

FIELD LOADER CONVEYOR
KIT DRIVE 10HP TFL CONVEYORS (13-05-0953 REV A0)



FIELD LOADER CONVEYOR

KIT DRIVE 10HP TFL CONVEYORS (13-05-0953 REV A0)

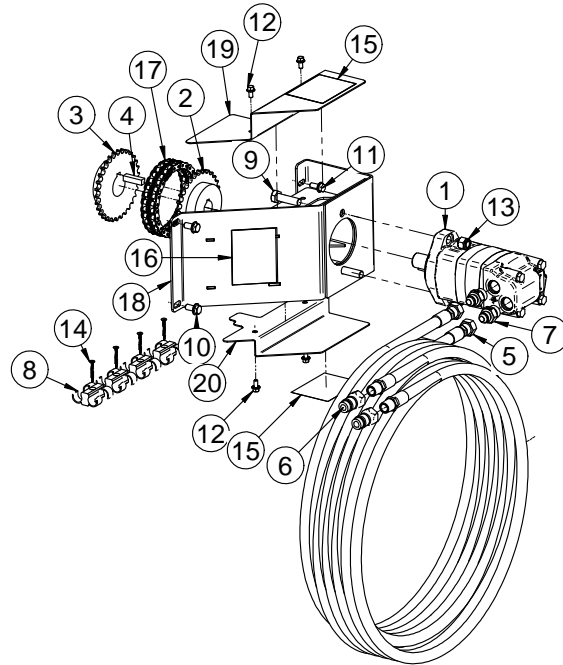
PART #		13-05-0953 REV A0	
Item #	Part #	Description	Qty
1	01-02-0143	BUSH 1.50IN BORE TYPE SK	1
2	01-08-0119	SHV 2BK36 X 1.375 FSH BORE	1
3	01-08-0121	BELT BX88	2
4	01-08-0147	SHV 2B18.4-SK	1
5	01-10-0015	KEY .375 X 1.50 CS	1
6	05-06-0127	CVR BELT DD	1
7	05-08-0842-17	WDMT MTR MNT PLT FL	1
8	06-01-0006	BOLT .250-20 X .750 ZP GR5	5
9	06-01-0080	BOLT .500-13 X 1.25 ZP GR5	2
10	06-01-0115	BOLT CRG .375-16 X 1.00 ZP GR5	4
11	06-01-0138	BOLT FLG .3125-18 X .750 ZP GR5	4
12	06-01-0157	BOLT .500-13 X 4.00 ZP GR5 FTH	2
13	06-02-0004	NUT FULL .500-13 ZP GR5	2
14	06-02-0047	NUT U-CLIP .250-20	5
15	06-03-0004	NUT NYL LOCK .500-13 ZP GR5	2
16	06-03-0014	NUT LOCK FLG .375-16 ZP GR5	4
17	06-04-0001	WSHR LOCK SPLT .250 ZP	5
18	06-05-0001	WSHR FLAT .250 ZP	5
19	09-02-0029	LBL ATWRK GSI ROTATE PARTS DC-2468	1
20	09-02-0030	LBL ATWRK GSI MISSING GUARD DC-2469	1
21	10414A	PIN MTR PIVOT	2
22	106CED-11	BACKPLATE BELT COVER FL45	1

MOTORS

MOTORS			
VOLTAGE	PART #	DESCRIPTION	HP
240V / 1PH	01-01-0295	MTR FD 10HP 1730RPM 215T TEFC 1PH	10 HP
240V / 480V / 3PH	01-01-0291	MTR FD 10HP 1770RPM 215T TEFC 3PH	10 HP
380 - 415V / 3PH	01-01-0220	MTR 10HP 1450RPM 215T TEFC 3PH 50HZ	10 HP
575V / 3PH	01-01-0173	MTR EE 10HP 1760 215T TEFC 575V 3PH	10 HP

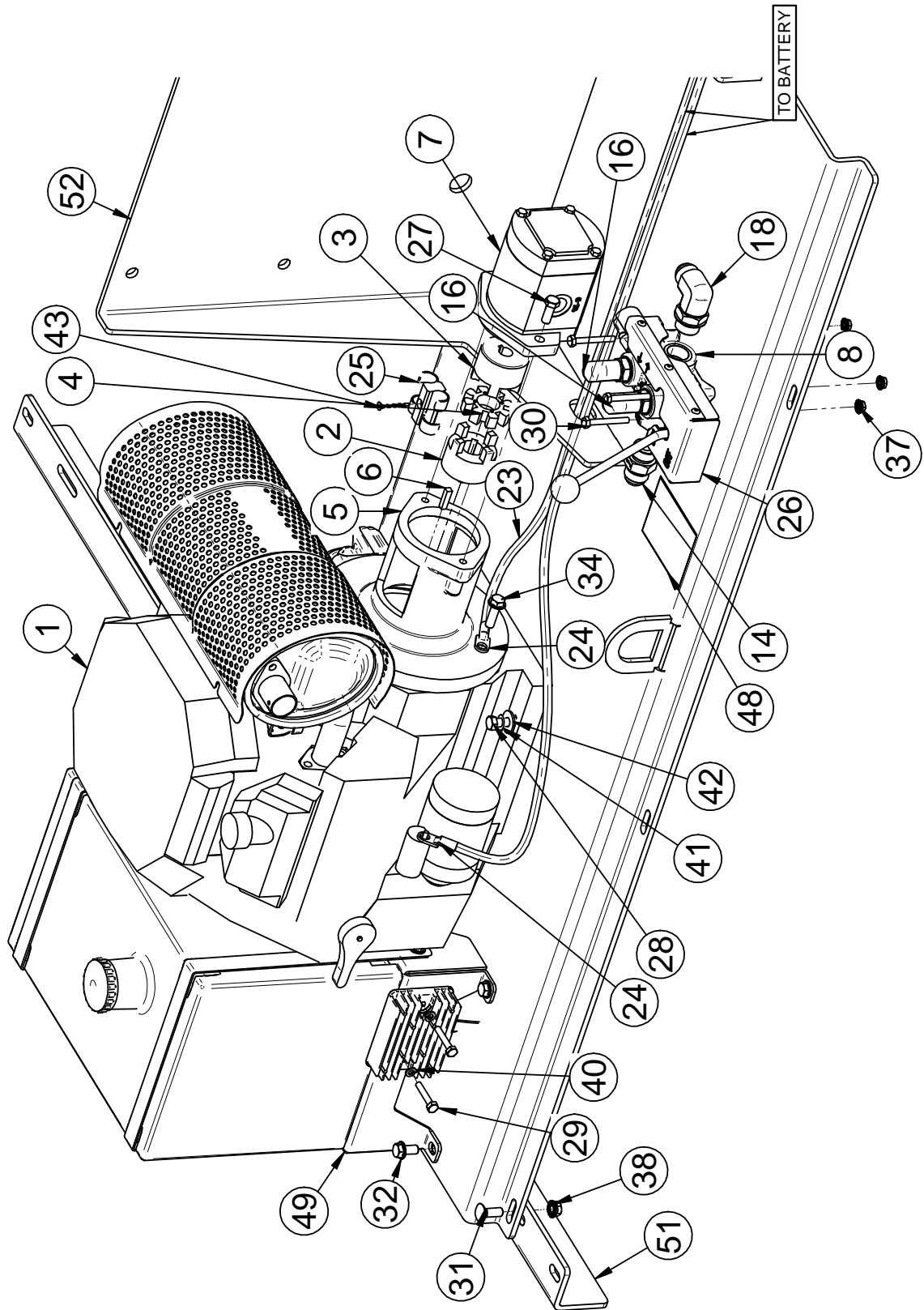
FIELD LOADER CONVEYOR

ASSEMBLY HYDRAULIC DRIVE (13-08-0929 REV A0)



PART #		13-08-0929 REV A0	
Item #	Part #	Description	Qty
1	01-01-0311	MTR HYD 7.63 CU IN	1
2	01-02-0065	SPKT 30T 40P 1.00ID KQY TYPE B	1
3	01-02-0144	SPKT 30T 40P 1.50ID .375 KQY TYPE B	1
4	01-10-0015	KEY .375 X 1.50 CS	1
5	02-03-0055	HHA .375ID 050.0FT -08FJX -08MP	2
6	02-05-0067	FTTG HYD QCK .5 ML BODY X .500 FNPT	2
7	02-05-0078	FTTG HYD STGHT 8MJ-10MOR	2
8	03-08-0432	CNDT .500 2X CLMP	4
9	06-01-0054	BOLT .500-13 X 1.75 ZP GR5	2
10	06-01-0124	BOLT FLG .375-16 X .750 ZP GR5	2
11	06-01-0138	BOLT FLG .3125-18 X .750 ZP GR5	2
12	06-01-0299	BOLT FLG .250-20 X .500 ZP GR5	4
13	06-03-0004	NUT NYL LOCK .500-13 ZP GR5	2
14	06-06-0125	SCRW SDST 10-16 X 1.50 FLHD ZP	4
15	09-02-0029	LBL ATWRK GSI ROTATE PARTS DC-2468	2
16	09-02-0033	LBL ATWRK GSI SKIN HAZZARD DC-2486	1
17	105C2B	ASSY RC 40-2 29-LINKS (14.5")	1
18	10756A-17	WDMT HYD MTR MNT	1
19	107573	CVR TOP HYD DRV	1
20	107574	COVER BOTTOM HYD DRV	1

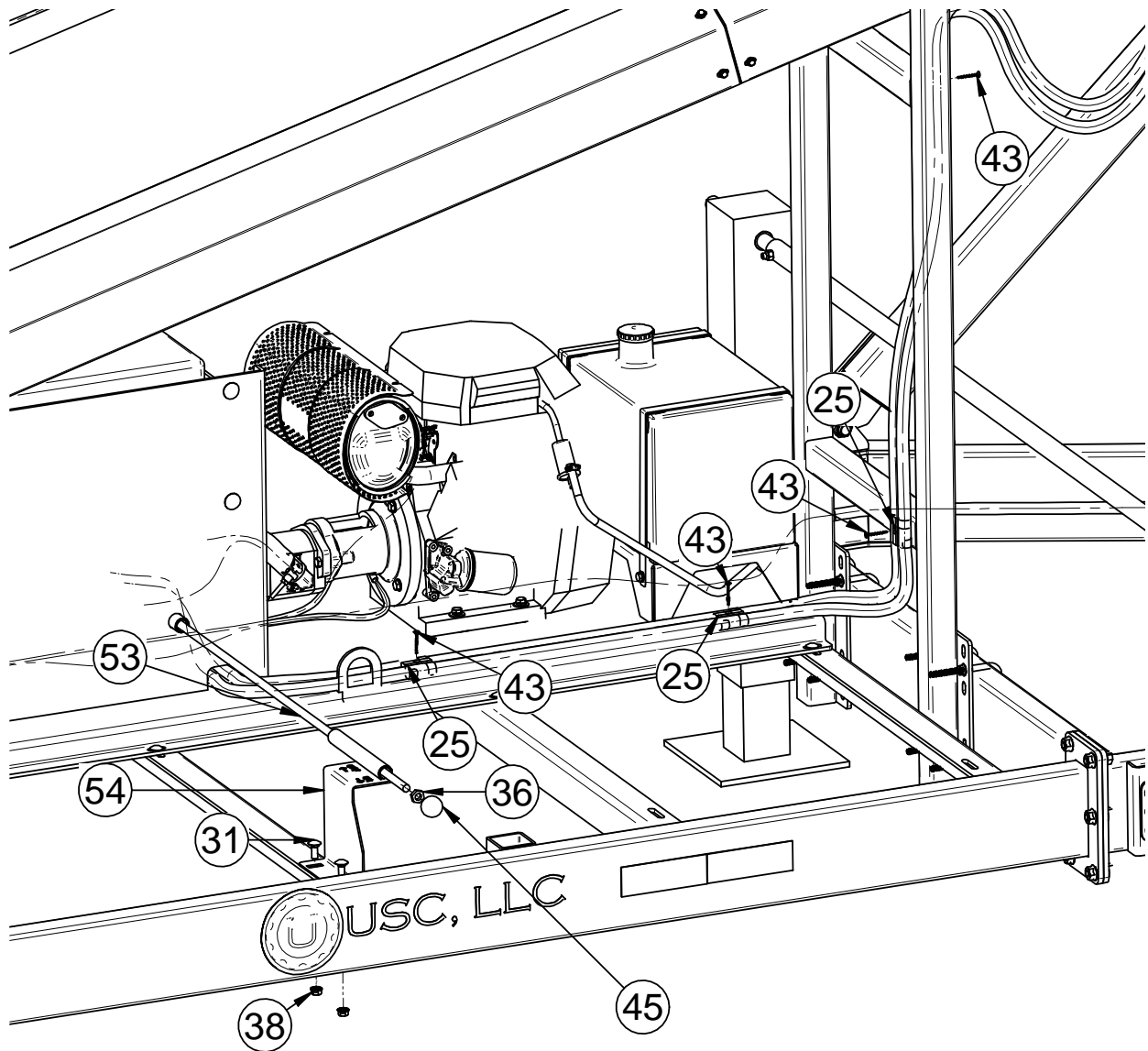
ASSEMBLY HYDRAULIC POWER PACK 20 HP (01-01-0310 REV A0)



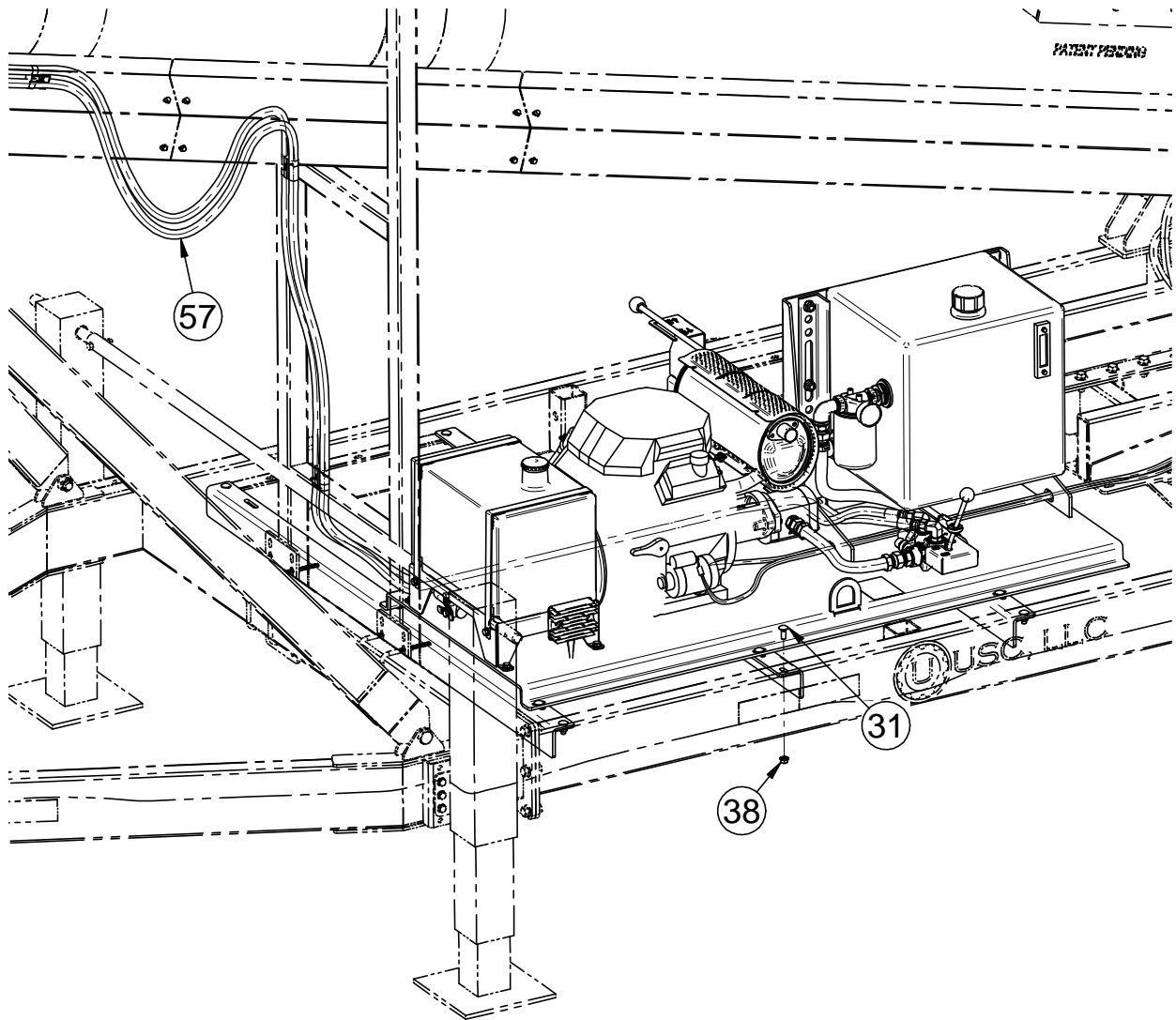
This exploded view diagram illustrates the assembly of a gas control valve system. The components are numbered as follows:

- 7**: Gas control valve body
- 9**: Gas line connection fitting
- 10**: Gas line connection fitting
- 11**: Gas line connection fitting
- 12**: Gas line connection fitting
- 13**: Gas line connection fitting
- 15**: Gas line connection fitting
- 17**: Gas line connection fitting
- 19**: Gas line connection fitting
- 20**: Gas line connection fitting
- 21**: Gas line connection fitting
- 22**: Gas line connection fitting
- 35**: Gas line connection fitting
- 36**: Gas line connection fitting
- 39**: Gas line connection fitting
- 44**: Gas line connection fitting
- 46**: Gas line connection fitting
- 47**: Gas line connection fitting
- 48**: Gas line connection fitting
- 53**: Gas line connection fitting
- 58**: Gas line connection fitting
- 59**: Gas line connection fitting

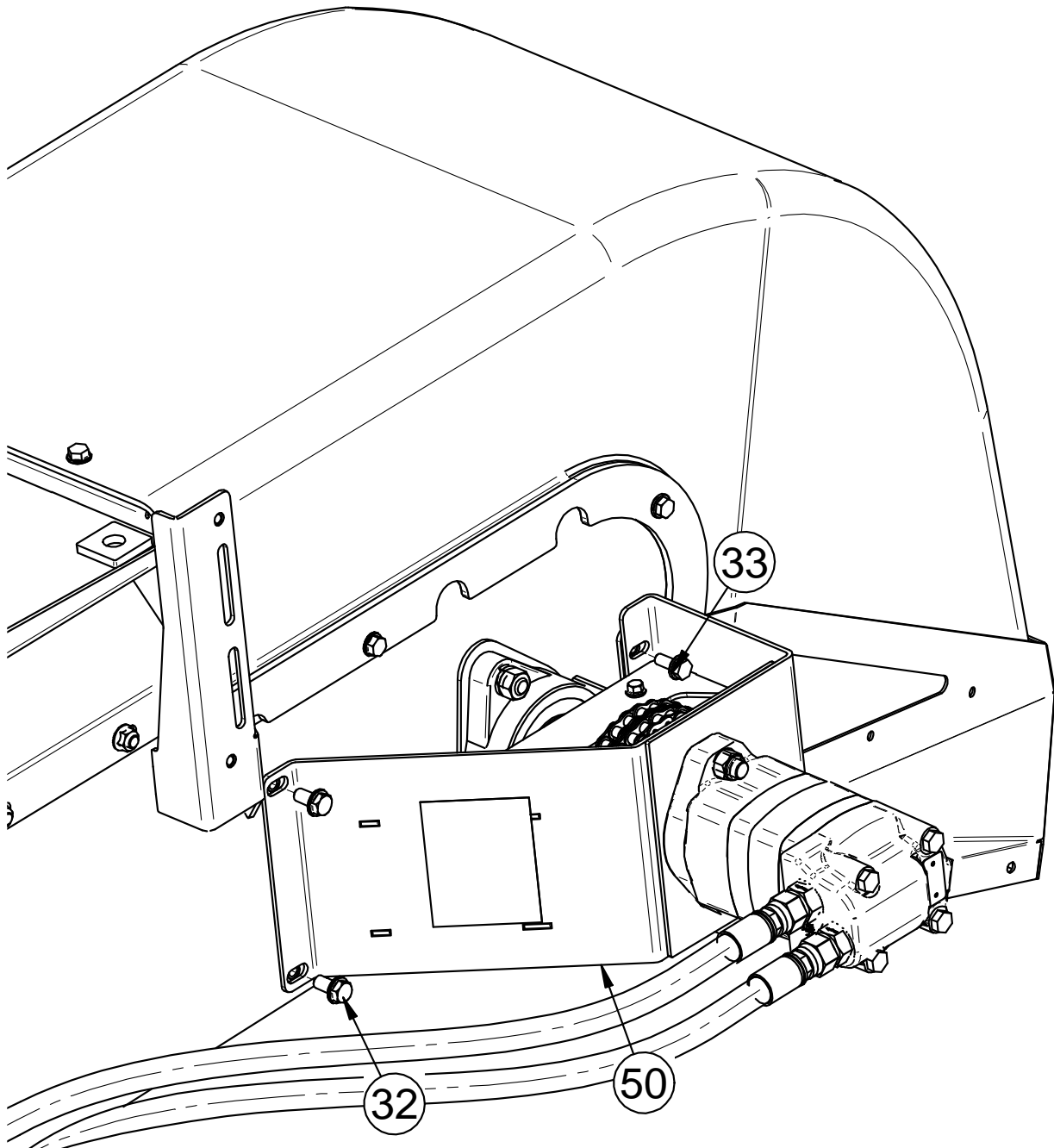
ASSEMBLY HYDRAULIC POWER PACK 20 HP (01-01-0310 REV A0)



ASSEMBLY HYDRAULIC POWER PACK 20 HP (01-01-0310 REV A0)



ASSEMBLY HYDRAULIC POWER PACK 20 HP (01-01-0310 REV A0)



FIELD LOADER CONVEYOR

ASSEMBLY HYDRAULIC POWER PACK 20 HP (01-01-0310 REV A0)

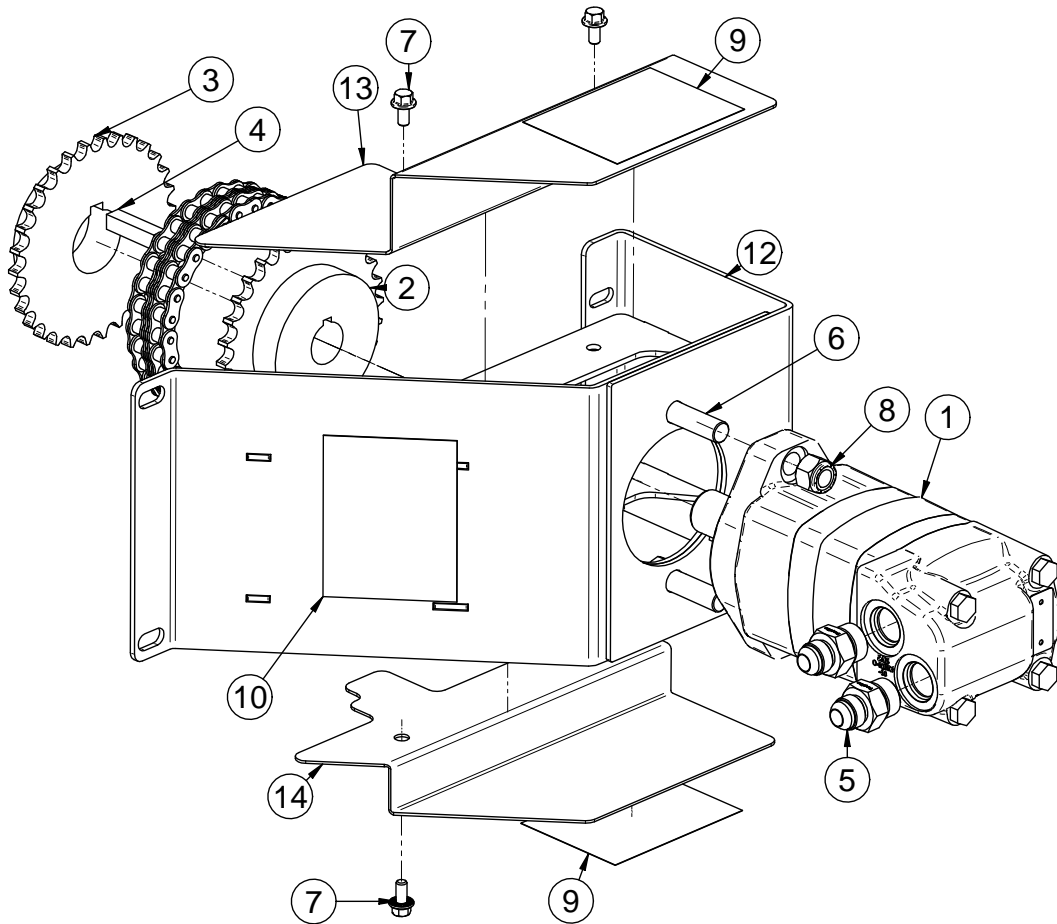
PART #		01-01-0310 REV A0	
Item #	Part #	Description	Qty
1	01-01-0227	MTR GX630 HONDA	1
2	01-07-0035	24/32 PM JAW B HUB ONLY 1.0 BORE	1
3	01-07-0036	24/32 PM JAW B HUB ONLY .625 BORE	1
4	01-07-0037	24/32 98 DURO RED SPIDER	1
5	01-07-0044	FR PUMP MTR BRKT 5.75 PLTD X 5.625L	1
6	01-10-0004	KEY .250 X 1.00 CS	1
7	02-01-0060	PUMP HYD 16CC	1
8	02-02-0134	VLV HYD SLTR MNL 12FOR IN 10FOR OUT	1
9	02-03-0058	HOSE HYD SUCTION 1.00 ID RED	0.614
10	02-04-0035	FTTG BUSH 2.00NPT X 1.00NPT STL	1
11	02-04-0065	FTTG BUSH 1.25NPT X .75NPT BLK	1
12	02-05-0088	FTTG HYD STGHT 16HOSE-16MP	1
13	02-05-0157	FTTG HYD STGHT 12MJ-10MOR	1
14	02-05-0160	FTTG HYD STGHT 12MJ-12MOR	1
15	02-05-0171	FTTG HYD STGHT 12MJ-12MP	1
16	02-06-0066	FTTG HYD 90 DEG 8MJ-10MOR	2
17	02-06-0098	FTTG 90 DEG STRT .750NPT GALV	1
18	02-06-0119	FTTG HYD 90 DEG 12MJ-12MOR	1
19	02-06-0135	FTTG HYD 90 DEG 16HOSE-12MOR	1
20	02-07-0071	FTTG NIP .75 NPT X 1.50 GALV SCH 40	1
21	02-12-0015	FILTER VISUAL IND 0-100PSI .125 NPT	1
22	02-12-0021	FLTR HYD .75NPT 25GPM	1
23	03-07-0071	WIRE 3 AWG THHN BLK	11.5
24	03-08-0376	CONN CRIMP ON LUG 3GA W/3/8 HOLE	4
25	03-08-0432	CNDT .500 2X CLMP	9
26	05-06-0161	GRD LBL-STOP MAIN CNVR	1
27	06-01-0016	BOLT .375-16 X 1.00 ZP GR5	2
28	06-01-0019	BOLT .375-16 X 1.75 ZP GR5	4
29	06-01-0052	BOLT .250-20 X 1.50 ZP GR5	2
30	06-01-0097	BOLT .250-20 X 2.00 ZP GR5	3
31	06-01-0115	BOLT CRG .375-16 X 1.00 ZP GR5	13
32	06-01-0124	BOLT FLG .375-16 X .750 ZP GR5	7
33	06-01-0138	BOLT FLG .3125-18 X .750 ZP GR5	2
34	06-01-0189	BOLT FLG .375-16 X 1.250 ZP GR5	4
35	06-01-0270	BOLT CRG .500-13 X 1.00 ZP GR5	4
36	06-02-0015	NUT JAM .500-20 ZP GR5	2

ASSEMBLY HYDRAULIC POWER PACK 20 HP (01-01-0310 REV A0)

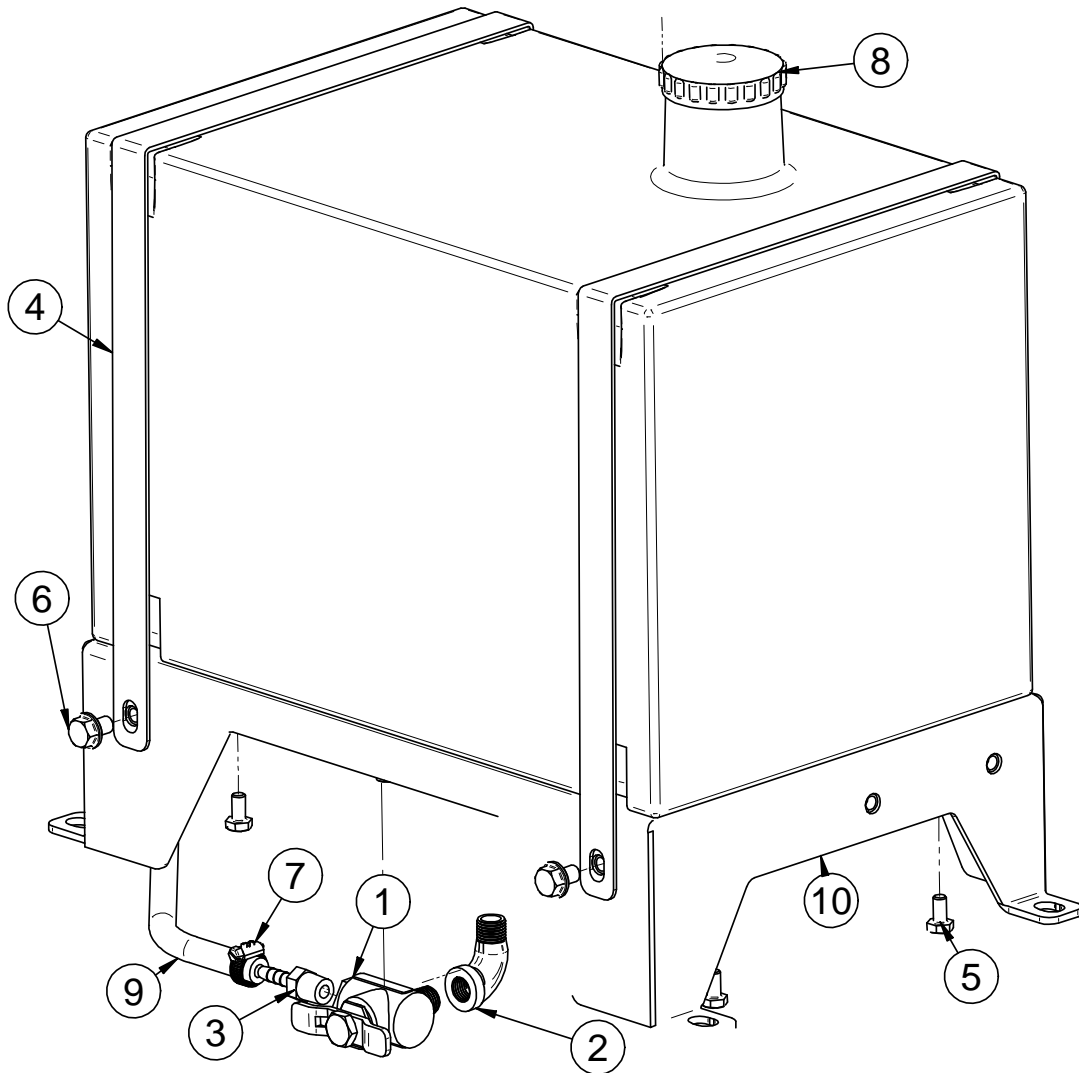
PART #		01-01-0310 REV A0	
Item #	Part #	Description	Qty
37	06-03-0013	NUT LOCK FLG .250-20 ZP GR5	3
38	06-03-0014	NUT LOCK FLG .375-16 ZP GR5	13
39	06-03-0015	NUT LOCK FLG .500-13 ZP GR5	4
40	06-04-0001	WSHR LOCK SPLT .250 ZP	2
41	06-04-0003	WSHR LOCK SPLT .375 ZP	4
42	06-05-0004	WSHR FLAT .375 ZP	4
43	06-06-0125	SCRW SDST 10-16 X 1.50 FLHD ZP	9
44	06-07-0031	CLMP HOSE T-BOLT 1.375-1.625 SS ZP	2
45	06-09-0138	KNOB BALL .500-20 RED	1
46	06-12-0010	REND .500-20 BALL RH FM	1
47	07-02-0023	TNK HYD 15GAL 16X14X16	1
48	09-02-0033	LBL ATWRK GSI SKIN HAZZARD DC-2486	1
49	10755E	ASSY TANK FUEL 6 GAL	1
50	107569-17	ASSY HYD DRV TFL	1
51	107572-11	PLT MNT BRKT	3
52	10757C-11	WDMT FR HYD PWR PKG	1
53	10758F	SWITCH ROD	1
54	107594-11	WDMT SWITCH MNT	1
55	11-14-0002	OIL HYD DTE 24 5GAL	3
56	11-14-0003	OIL ENGINE 10W-30	2
57	13-05-0946	HHA .500ID 320.0IN -08FJX -08FJX	2
58	13-05-0949	HHA .750ID 025.0IN -12FJX -12FJX	1
59	13-05-0950	HHA .750ID 012.0IN -12FJX -12FJX	1

FIELD LOADER CONVEYOR

ASSEMBLY HYDRAULIC DRIVE (107569-17 REV A0)

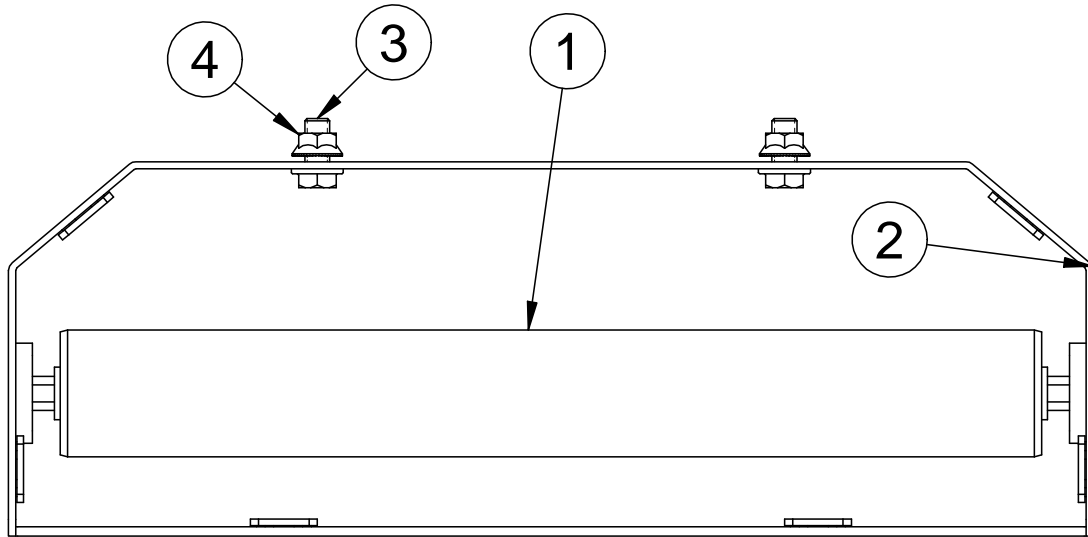


PART #		107569-17 REV A0	
Item #	Part #	Description	Qty
1	01-01-0311	MTR HYD 7.63 CU IN	1
2	01-02-0065	SPKT 30T 40P 1.00ID KQY TYPE B	1
3	01-02-0144	SPKT 30T 40P 1.50ID .375 KQY TYPE B	1
4	01-10-0015	KEY .375 X 1.50 CS	1
5	02-05-0078	FTTG HYD STGHT 8MJ-10MOR	2
6	06-01-0054	BOLT .500-13 X 1.75 ZP GR5	2
7	06-01-0299	BOLT FLG .250-20 X .500 ZP GR5	4
8	06-03-0004	NUT NYL LOCK .500-13 ZP GR5	2
9	09-02-0029	LBL ATWRK GSI ROTATE PARTS DC-2468	2
10	09-02-0033	LBL ATWRK GSI SKIN HAZZARD DC-2486	1
11	105C2B	ASSY RC 40-2 29-LINKS (14.5")	1
12	10756A-17	WDMT HYD MTR MNT	1
13	107573	CVR TOP HYD DRV	1
14	107574	COVER BOTTOM HYD DRV	1

ASSEMBLY FUEL TANK 6 GALLON (10755E REV A0)

PART #		10755E REV A0	
Item #	Part #	Description	Qty
1	02-02-0101	VLV BALL .250NPT 90DEG BRSS	1
2	02-06-0035	FTTG 90 DEG STRT .250NPTX .250NPT *	1
3	02-08-0032	FTTG STGHT .250HB X .250NPT ML BRSS	1
4	05-10-4388-11	BRKT TANK HLDN	2
5	06-01-0004	BOLT .250-20 X .500 ZP GR5	4
6	06-01-0261	BOLT FLG .3125-18 X .500 ZP GR5	4
7	06-07-0005	CLMP HOSE .219 TO .625 X .313W ZP	2
8	07-02-0037	TNK FUEL 6 GAL .250NPT OTLT - CAP*	1
9	1042FC	HOSE FUEL (02-03-0068)	1
10	10755F-11	WDMT MNT FUEL TANK	1

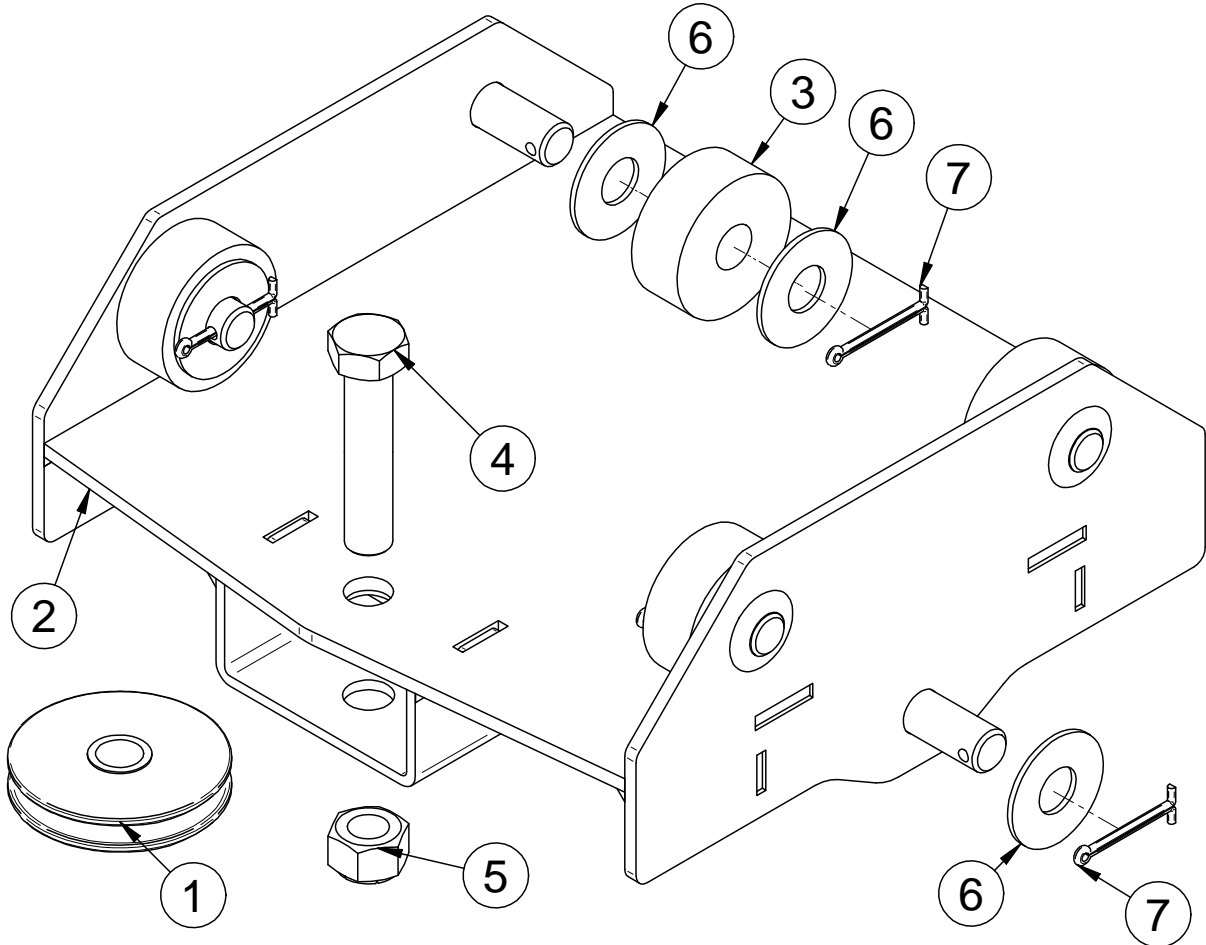
FIELD LOADER CONVEYOR
ASSEMBLY RETURN ROLLER (13-05-0902 REV A0)



PART #		13-05-0902 REV A0	
Item #	Part #	Description	Qty
1	01-08-0156	ROLLER SMOOTH 2IN DIA X 15IN L	1
2	05-08-0877-11	WDMT RETURN ROLLER FL3	1
3	06-01-0124	BOLT FLG .375-16 X .750 ZP GR5	2
4	06-03-0014	NUT LOCK FLG .375-16 ZP GR5	2

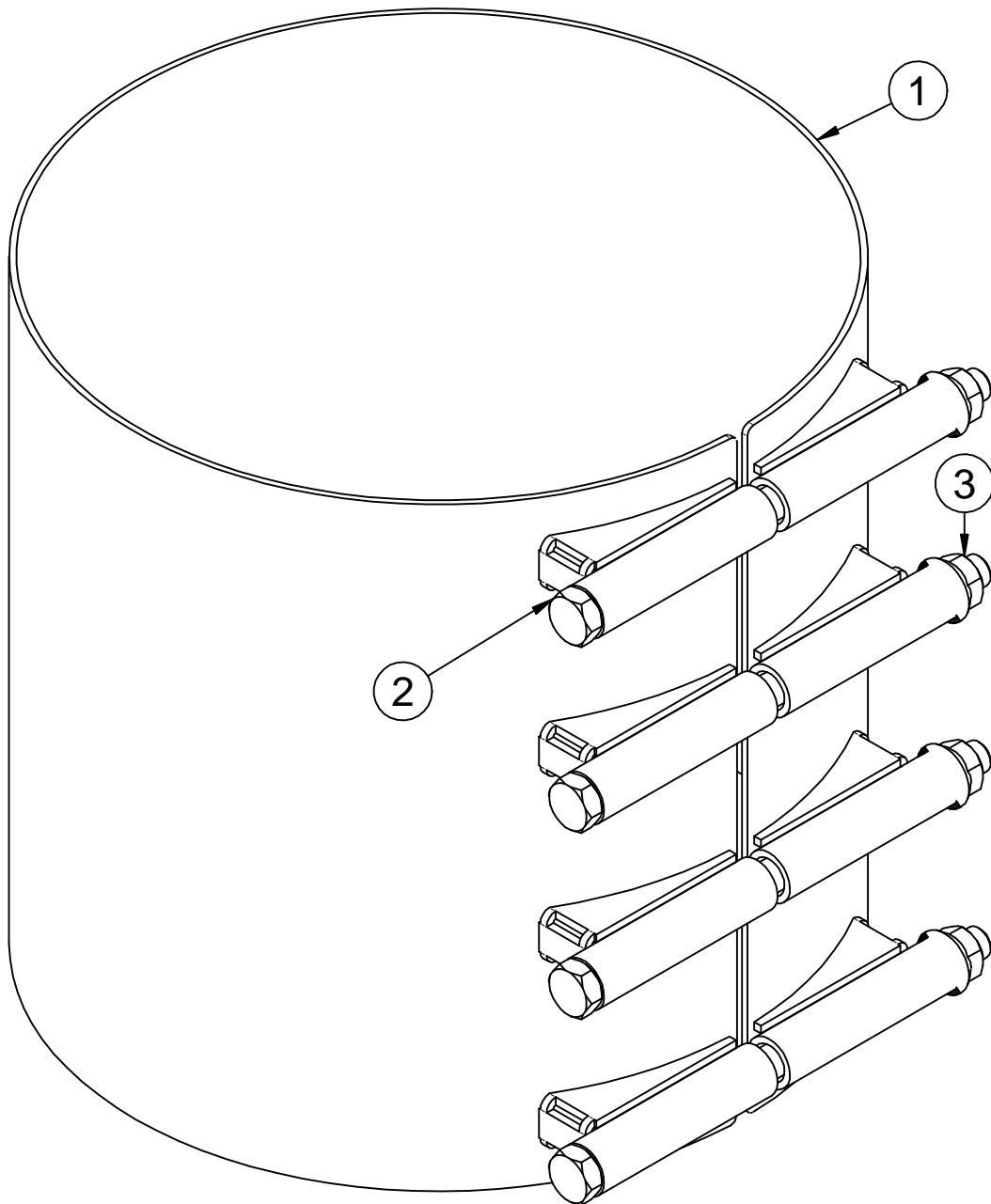
FIELD LOADER CONVEYOR

ASSEMBLY SLIDE TOP MOUNT (13-05-0903 REV A0)



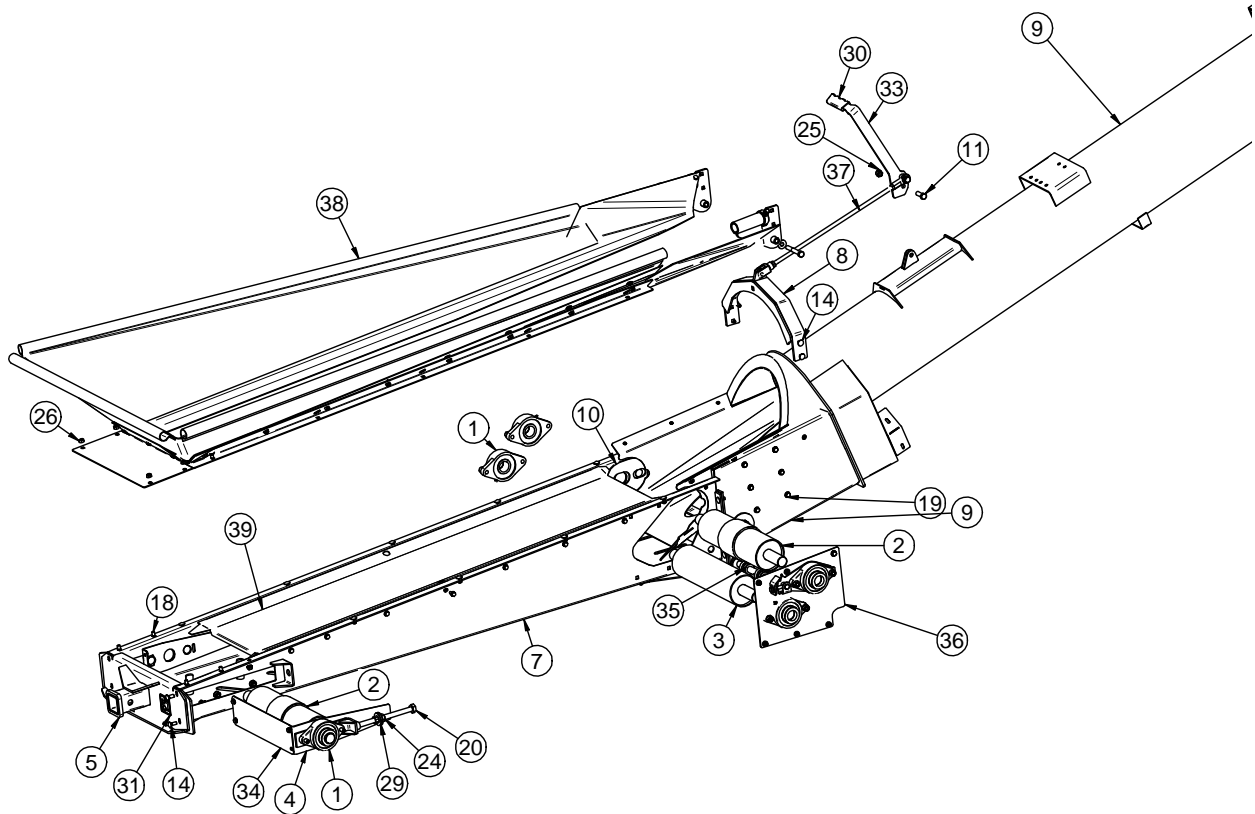
PART #		13-05-0903 REV A0	
Item #	Part #	Description	Qty
1	01-02-0074	PLY WIRE ROPE 3 IN DIA	1
2	05-08-0876-11	WDMT SLIDE TOP MNT	1
3	05-11-0573	WHL 2.5 OD X .781 ID X 1.0 THK UHMW	4
4	06-01-0059	BOLT .750-10 X 3.50 ZP GR5	1
5	06-02-0029	NUT NYL LOCK .750-10 ZP GR5	1
6	06-05-0007	WSHR FLAT .750 ZP	11
7	06-09-0023	PIN CTR .188 X 2.00 ZP	6

FIELD LOADER CONVEYOR
ASSEMBLY 4 BOLT CLAMP (13-05-0915 REV A0)



PART #		13-05-0915 REV A0	
Item #	Part #	Description	Qty
1	05-07-1095-17	WDMT CLMP 12IN UNI-TUBE FL3	1
2	06-01-0268	BOLT .500-13 X 8.00 ZP GR5	4
3	06-03-0015	NUT LOCK FLG .500-13 ZP GR5	4

FIELD LOADER CONVEYOR
ASSEMBLY INLET (13-08-0923 REV A0)



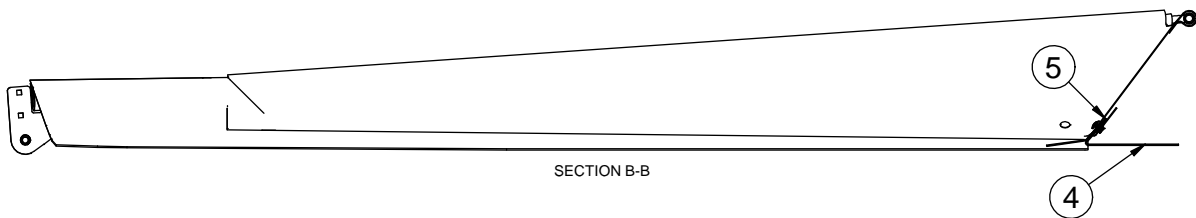
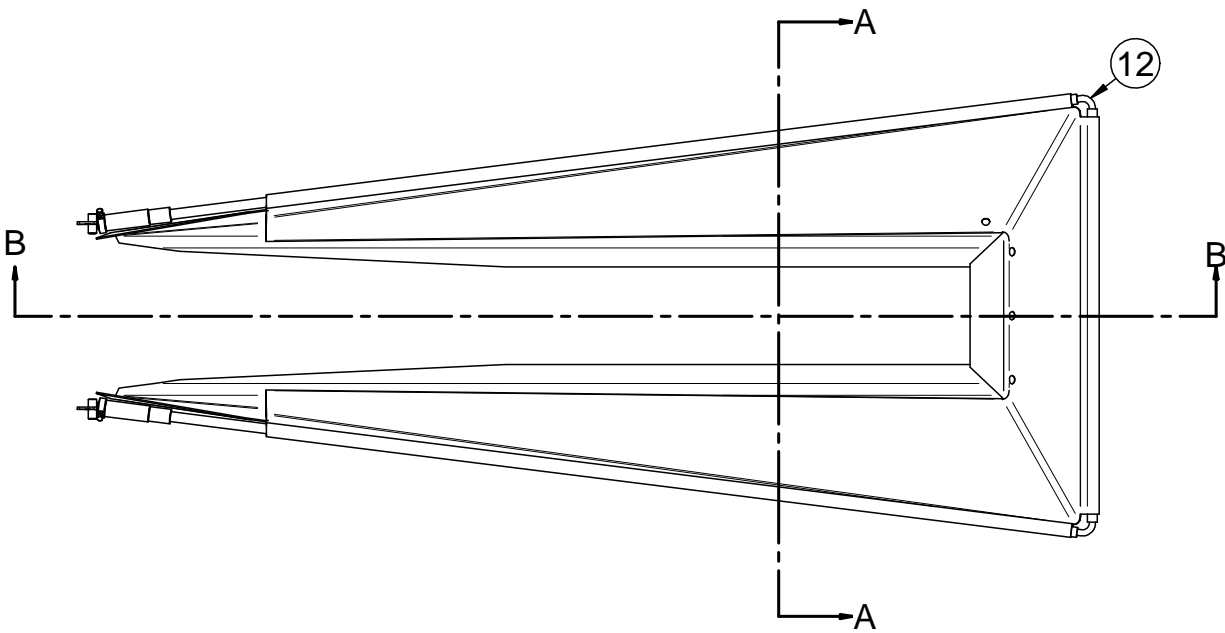
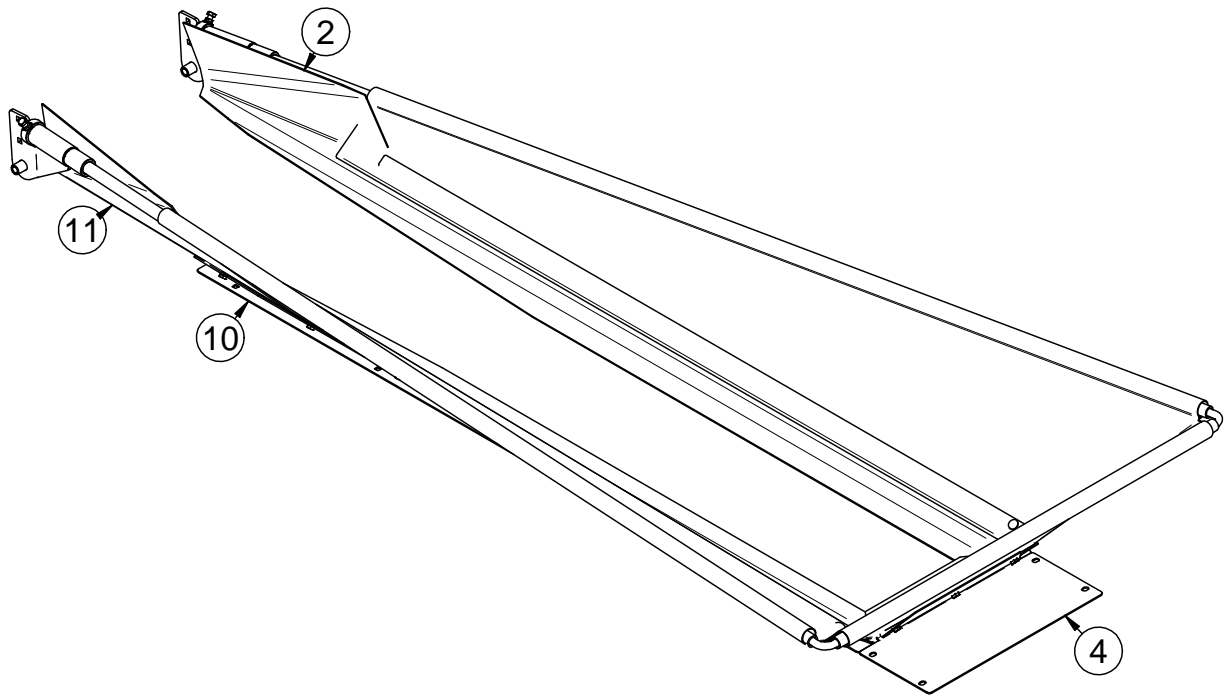
PART #		13-08-0923 REV A0		
Item #	Part #	Description	Qty	See Page
1	01-03-0077	BRG FLG MNT 1.500ID 2BOLT ECNTRC	4	
2	01-08-0144	PULLEY TAIL 4.50DIA X 15.50W LG BRG	2	
3	01-08-0155	PULLEY TAIL 4.5 X 15.5 X 1.5 SHAFT	1	
4	05-08-0722-01	WDMT TAK-UP PLT LG BRG	2	
5	05-08-0817-17	WDMT HITCH FLD LDR	1	
6	05-08-0818	THROAT SEAL RETAINER	2	
7	05-08-0821-17	INLT FRAME WDMT W RVT FL 12IN	1	
8	05-08-0822	WDMT TARP LIFT	1	
9	05-08-0868-17	WDMT INLET TRANS FL3	1	
10	05-10-4788	S-DRIVE SEAL	1	
11	06-01-0025	BOLT .500-13 X 1.50 ZP GR5	1	
12	06-01-0026	BOLT CRG .500-13 X 1.75 ZP GR5	4	
13	06-01-0027	BOLT .500-13 X 2.00 ZP GR5	1	
14	06-01-0115	BOLT CRG .375-16 X 1.00 ZP GR5	15	
15	06-01-0127	BOLT CRG .375-16 X 1.25 ZP GR5	3	

FIELD LOADER CONVEYOR

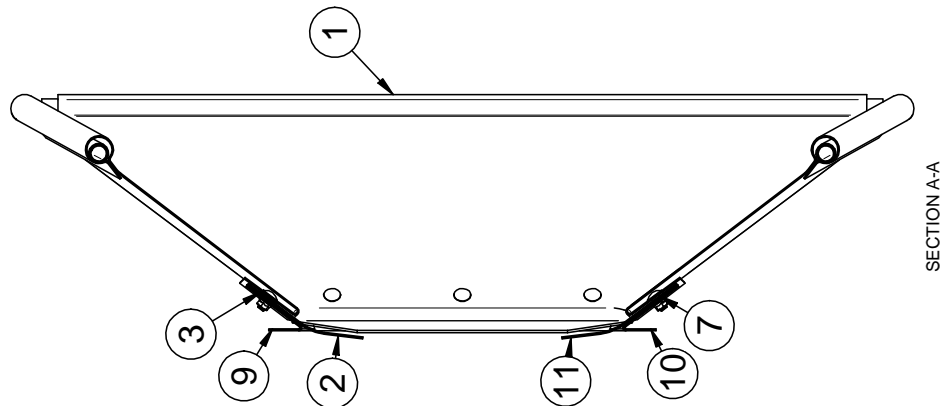
ASSEMBLY INLET (13-08-0923 REV A0)

PART #		13-08-0923 REV A0		
Item #	Part #	Description	Qty	See Page
16	06-01-0138	BOLT FLG .3125-18 X .750 ZP GR5	14	
17	06-01-0147	BOLT .500-13 X 3.50 ZP GR5	2	
18	06-01-0153	BOLT CRG .375-16X.750 ZP SHORT NECK	23	
19	06-01-0189	BOLT FLG .375-16 X 1.250 ZP GR5	6	
20	06-01-0249	BOLT .625-11 X 9.00 ZP GR5 FTH	2	
21	06-01-0261	BOLT FLG .3125-18 X .500 ZP GR5	4	
22	06-01-0343	BOLT FLG .3125-18 X 1.25 ZP GR5	1	
23	06-02-0004	NUT FULL .500-13 ZP GR5	8	
24	06-02-0005	NUT FULL .625-11 ZP GR5	4	
25	06-03-0004	NUT NYL LOCK .500-13 ZP GR5	1	
26	06-03-0014	NUT LOCK FLG .375-16 ZP GR5	41	
27	06-04-0004	WSHR LOCK SPLT .500 ZP	8	
28	06-05-0005	WSHR FLAT .500 ZP	5	
29	06-05-0006	WSHR FLAT .625 ZP	4	
30	06-09-0085	CLPSBL HOPP HNDL GRIP	1	
31	09-01-0003	ATWK LBL MADE IN USA YEL 2.50X2.50	1	
32	104083-17	PLT BASE SKID	1	
33	10408C	PLT LEVER	1	
34	1061DC	END ROLLER BRACE PLT	1	
35	13-05-0659	ASSY BELT SHAFT W/BRGS	1	48
36	13-05-0774-17	BEAR ADJ PLT ASSY FL	1	47
37	13-08-0761	ASSY LINK TARP LIFT FL	1	46
38	13-08-0885-01	HOPPER ASM FL	1	43
39	13-08-0916	ASSY PAN BELT SUPPORT	1	

FIELD LOADER CONVEYOR
ASSEMBLY HOPPER (13-08-0885 REV A0)

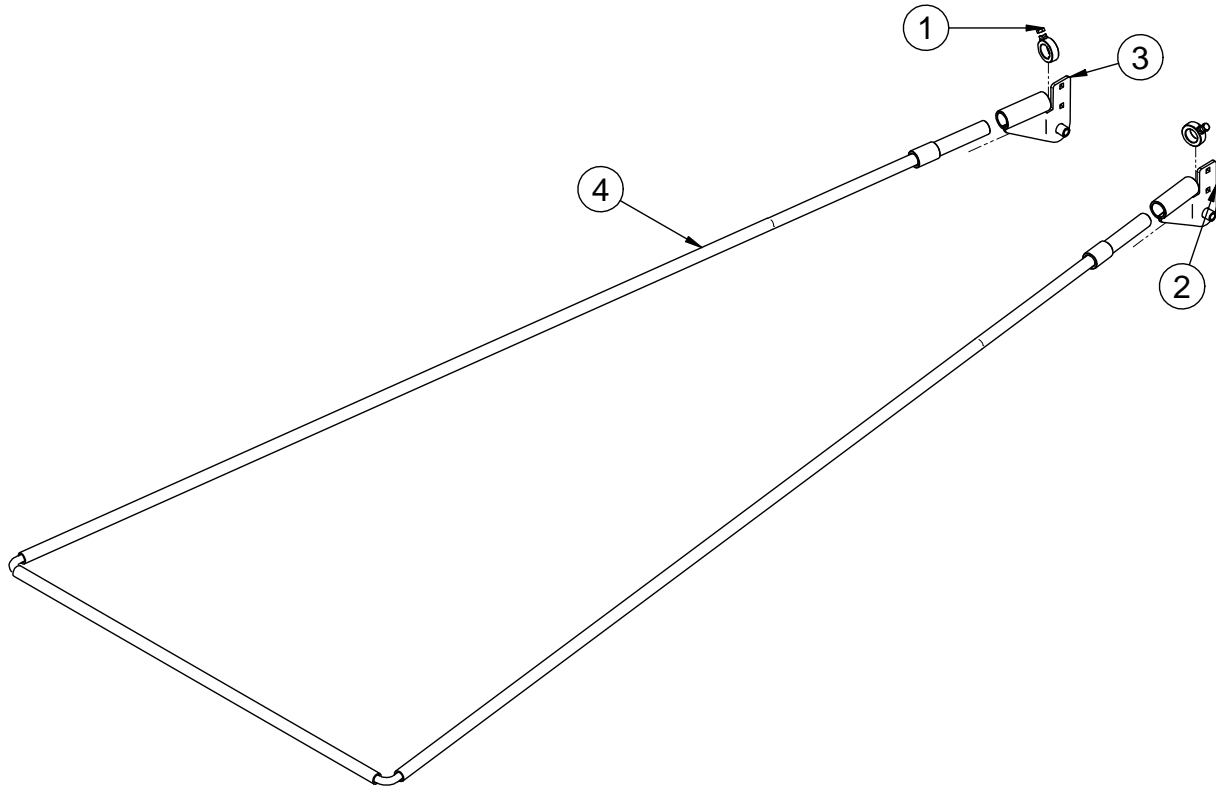


FIELD LOADER CONVEYOR
ASSEMBLY HOPPER (13-08-0885 REV A0)



PART #		13-08-0885-01 REV A0		
Item #	Part #	Description	Qty	See Page
1	05-08-0858	HOPPER FLAP RH TRIMMED	1	
2	05-08-0859	HOPPER FLAP LH TRIMMED	1	
3	05-08-0860	HOPPER FLAP, REAR TRIMMED	1	
4	05-10-4784-01	HOPPER END PLATE	1	
5	05-10-4786-01	HOPPER TAB RH	1	
6	05-10-4787-01	HOPPER TAB LH	1	
7	06-01-0387	ELEVATOR BOLT .375 X 1.00	19	
8	06-03-0014	NUT LOCK FLG .375-16 ZP GR5	19	
9	1040D3	PLT CLMP SKIRT	2	
10	1040D6	PLT CLMP SKIRT REAR	1	
11	13-05-0775	HOPPER, FL35 12IN	1	
12	13-08-0886	HOPPER FRAME ASSY	1	45

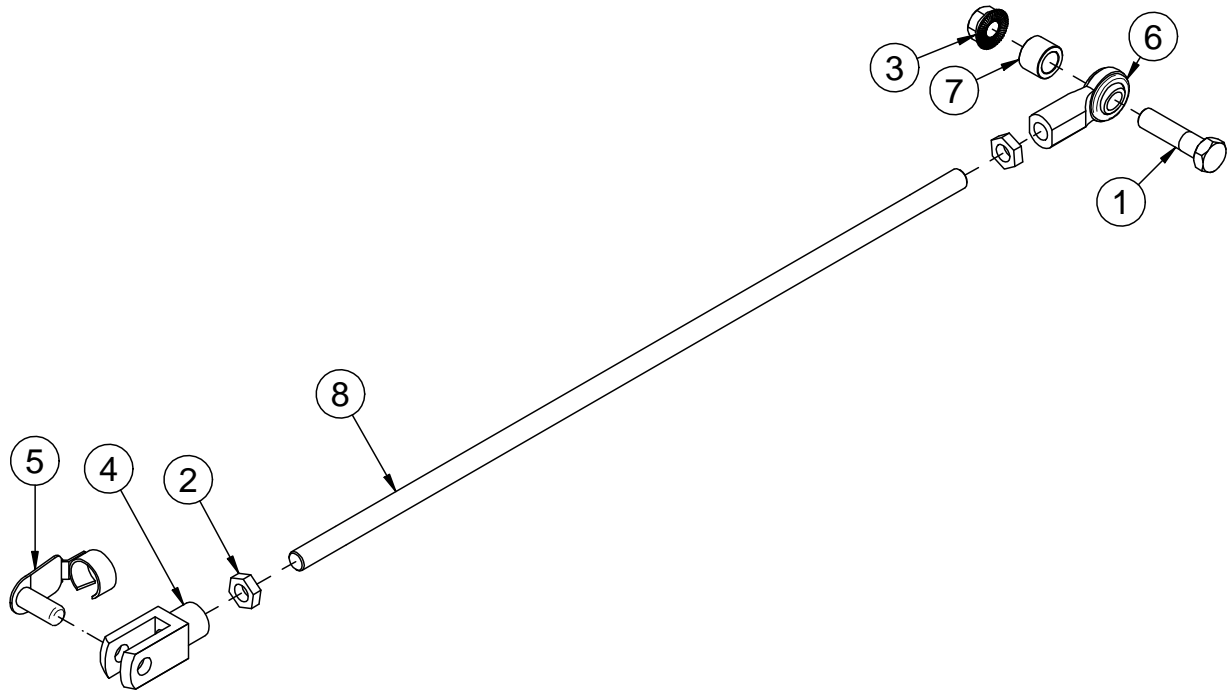
FIELD LOADER CONVEYOR
ASSEMBLY HOPPER FRAME (13-08-0886 REV A0)



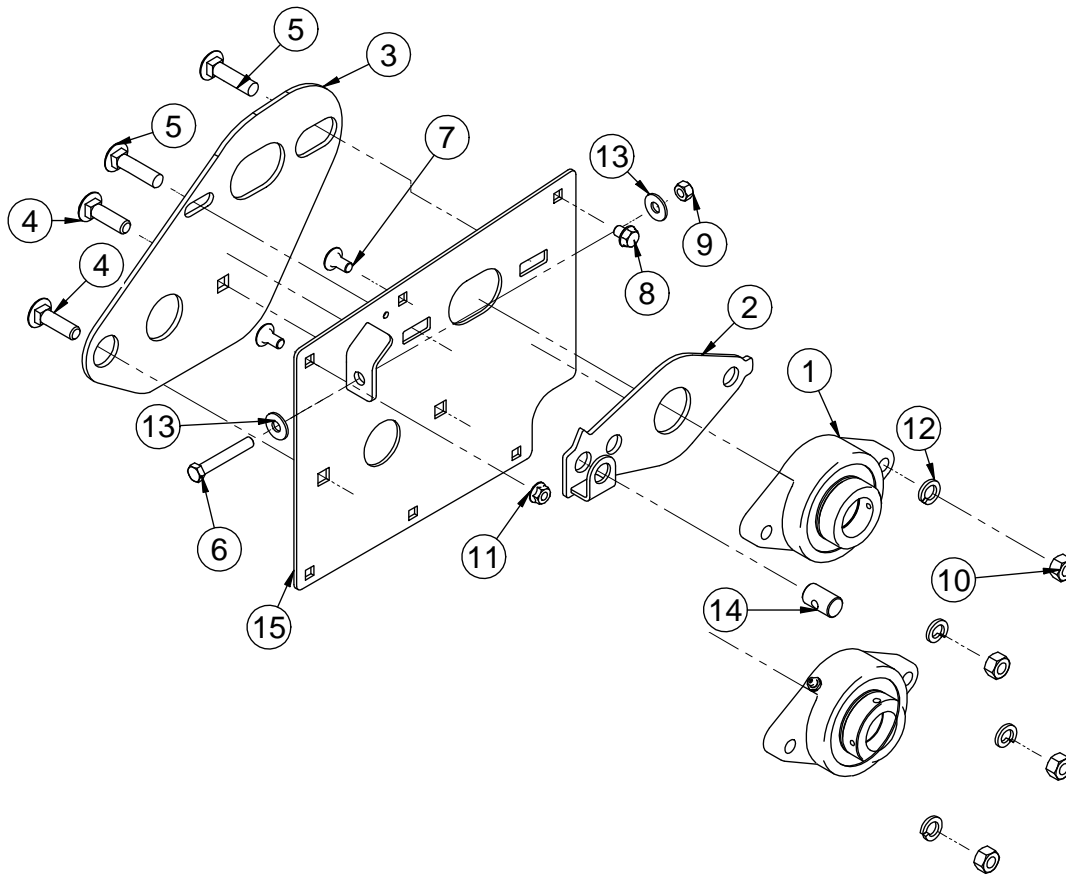
PART #		13-08-0886 REV A0	
Item #	Part #	Description	Qty
1	06-12-0049	COLLAR SET 2"OD X 1 1/4"ID	2
2	106251	TARP PIVOT WDMT, RH	1
3	106258	TARP PIVOT WDMT, LH	1
4	13-08-0904	WDMNT HOPPER FRAME FL	1

FIELD LOADER CONVEYOR

ASSEMBLY TARP LIFT LINK (13-08-0761 REV A0)



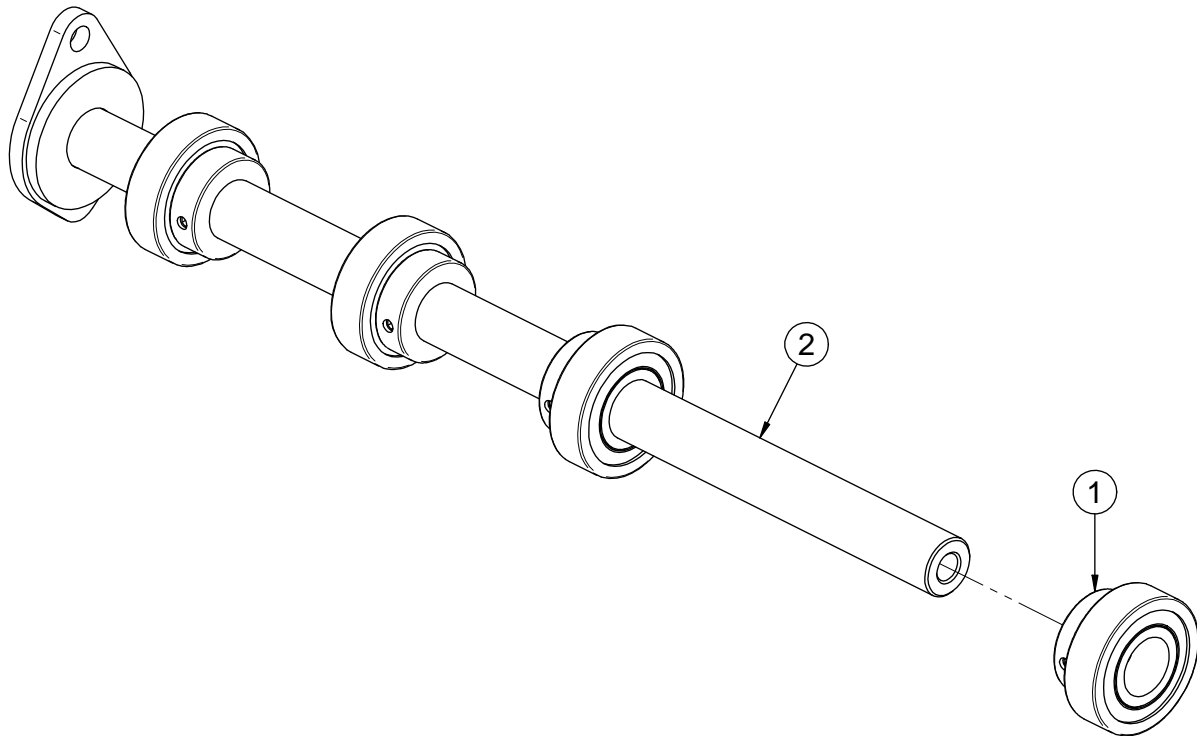
PART #		13-08-0761 REV A0	
Item #	Part #	Description	Qty
1	06-01-0027	BOLT .500-13 X 2.00 ZP GR5	1
2	06-02-0015	NUT JAM .500-20 ZP GR5	2
3	06-03-0015	NUT LOCK FLG .500-13 ZP GR5	1
4	06-12-0008	CLVS .500-20 X .500	1
5	06-12-0009	PIN CLIP SPRING .500	1
6	06-12-0010	REND .500-20 BALL RH FM	1
7	10411A	SPACER LINK	1
8	105CAE	ROD THREADED TARP ADJ	1

ASSEMBLY BEARING PLATE (13-05-0774 REV A0)

PART #		13-05-0774-01 REV A0	
Item #	Part #	Description	Qty
1	01-03-0077	BRG FLG MNT 1.500ID 2BOLT ECNTRC	2
2	05-08-0706-01	WDMT TRACKING PIVOT LG BRG	1
3	05-10-4788	S-DRIVE SEAL	1
4	06-01-0026	BOLT CRG .500-13 X 1.75 ZP GR5	2
5	06-01-0070	BOLT CRG .500-13 X 2.00 ZP GR5	2
6	06-01-0071	BOLT .375-16 X 2.50 ZP GR5	1
7	06-01-0153	BOLT CRG .375-16X.750 ZP SHORT NECK	5
8	06-01-0341	BOLT FLG .375-16 X .500 ZP GR5	1
9	06-02-0003	NUT FULL .375-16 ZP GR5	1
10	06-02-0004	NUT FULL .500-13 ZP GR5	4
11	06-03-0014	NUT LOCK FLG .375-16 ZP GR5	5
12	06-04-0004	WSHR LOCK SPLT .500 ZP	2
13	06-05-0004	WSHR FLAT .375 ZP	2
14	104079	PIN TRACKING PIVOT	1
15	1061A0-01	BEAR ADJ PLT WDMT	1

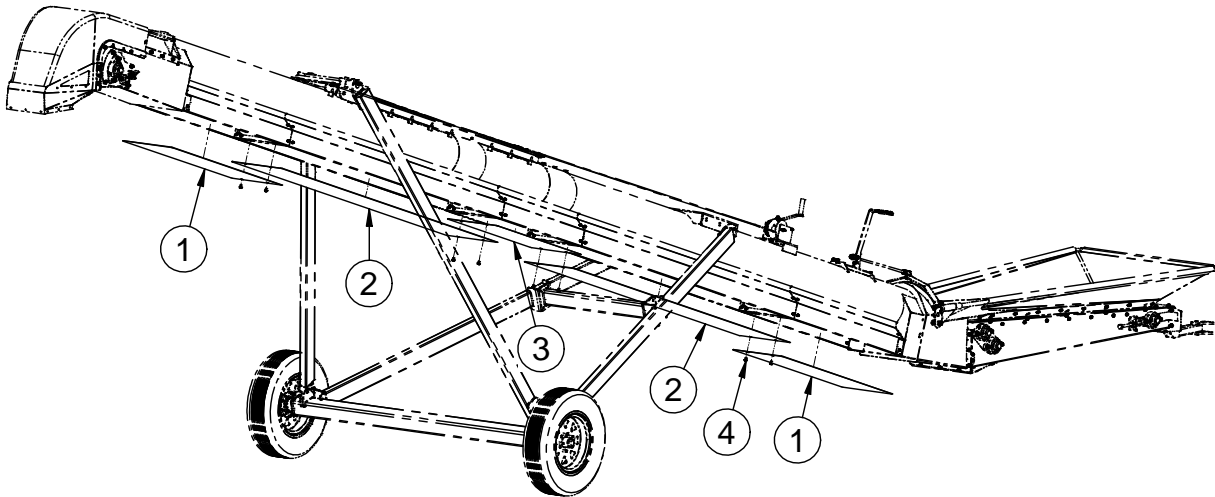
FIELD LOADER CONVEYOR

ASSEMBLY BELT SHAFT WITH BEARINGS (13-05-0659 REV A0)



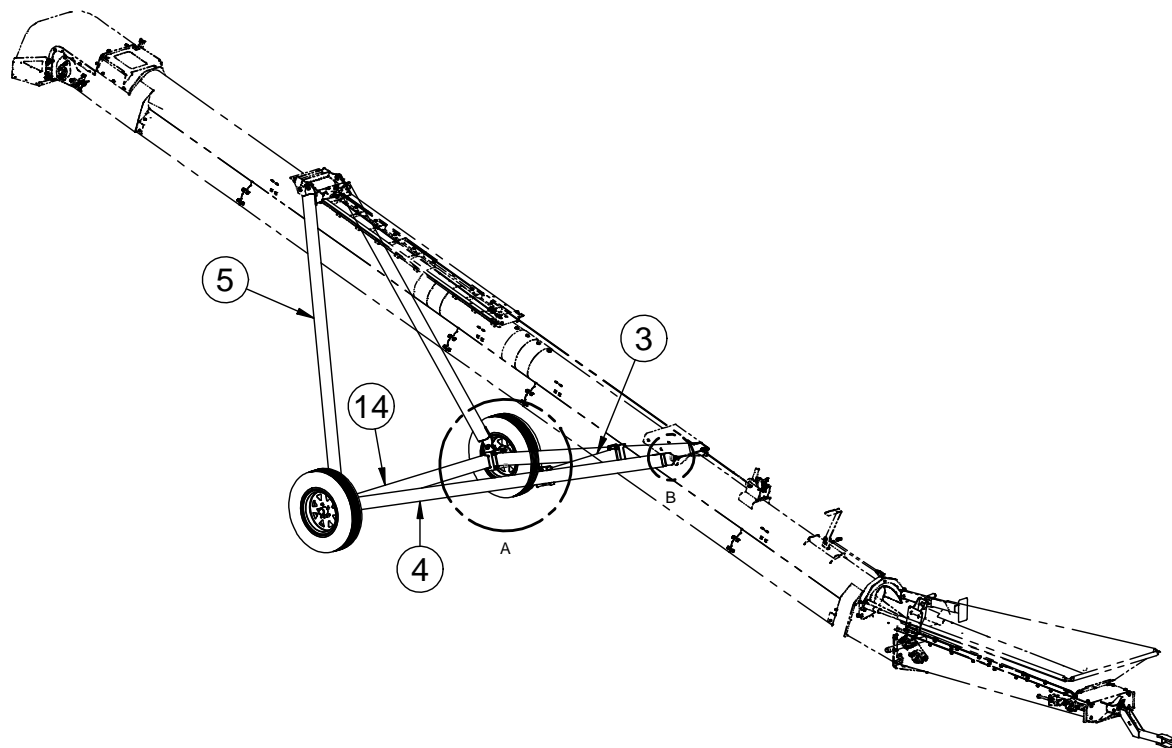
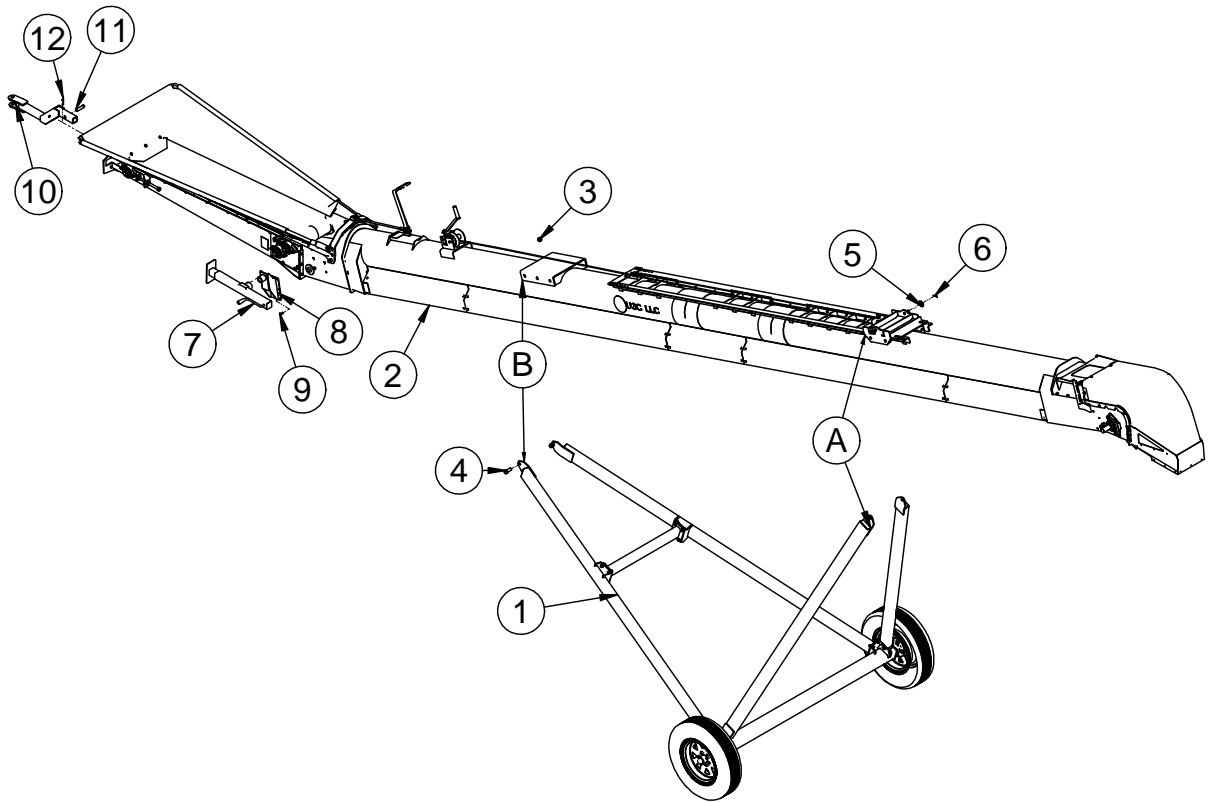
PART #		13-05-0659-01 REV A0	
Item #	Part #	Description	Qty
1	01-03-0073	BRG BALL .875ID X 2.047OD	4
2	05-08-0717-01	WDMT PIN ROLLER	1

FIELD LOADER CONVEYOR
KIT BELLY PAN (13-05-0916 REV A0)

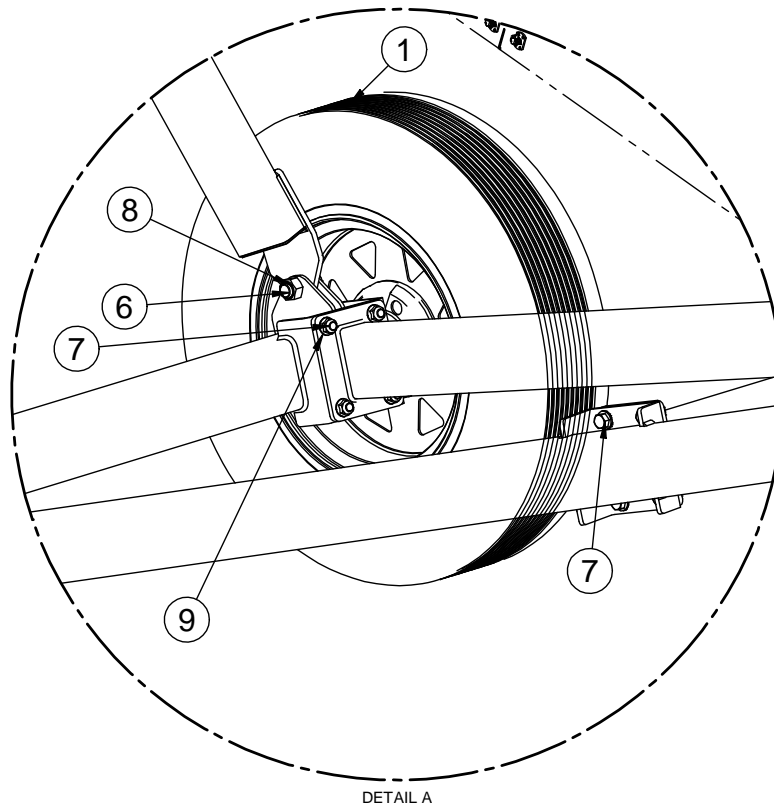
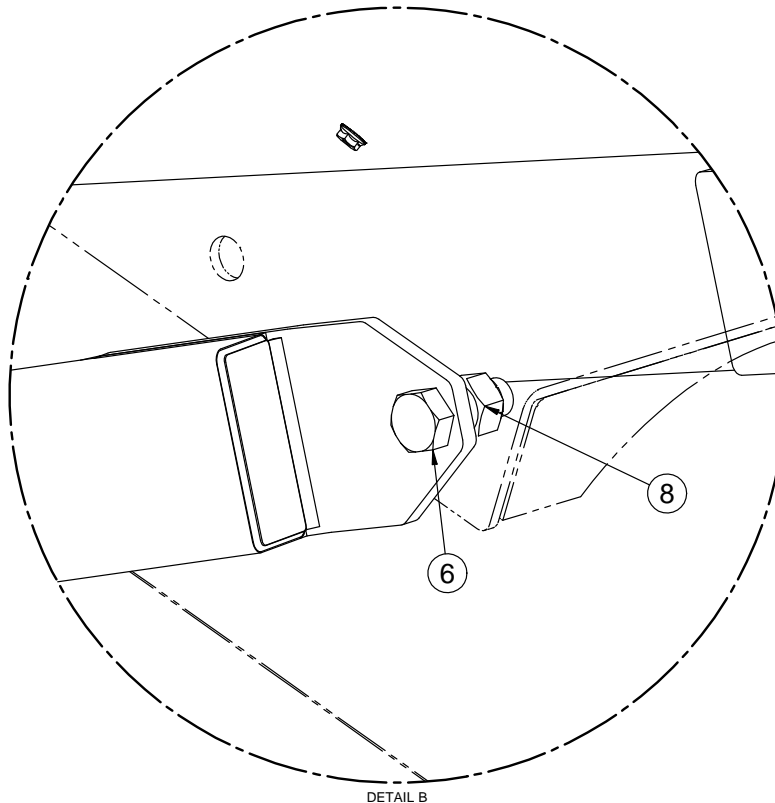


PART #		13-05-0916 REV A0	
Item #	Part #	Description	Qty
1	05-10-4940	FL3 BELLY PAN END SECT	2
2	05-10-4941	FL3 BELLY PAN MID SECT	2
3	05-10-4942	FL3 BELLY PAN MID SECT 35FT	1
4	06-01-0299	BOLT FLG .250-20 X .500 ZP GR5	8

FIELD LOADER CONVEYOR
ASSEMBLY UNDERCARRIAGE (13-08-0926 REV A0)



FIELD LOADER CONVEYOR
ASSEMBLY UNDERCARRIAGE (13-08-0926 REV A0)

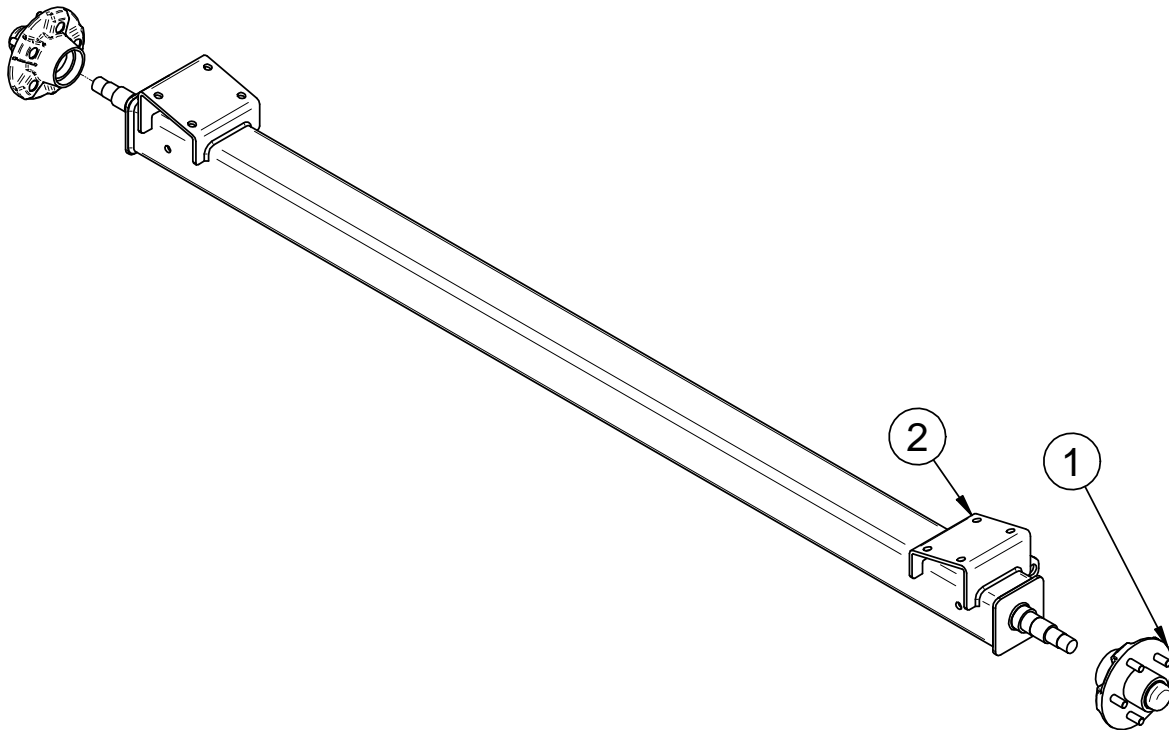


FIELD LOADER CONVEYOR

ASSEMBLY UNDERCARRIAGE (13-08-0926 REV A0)

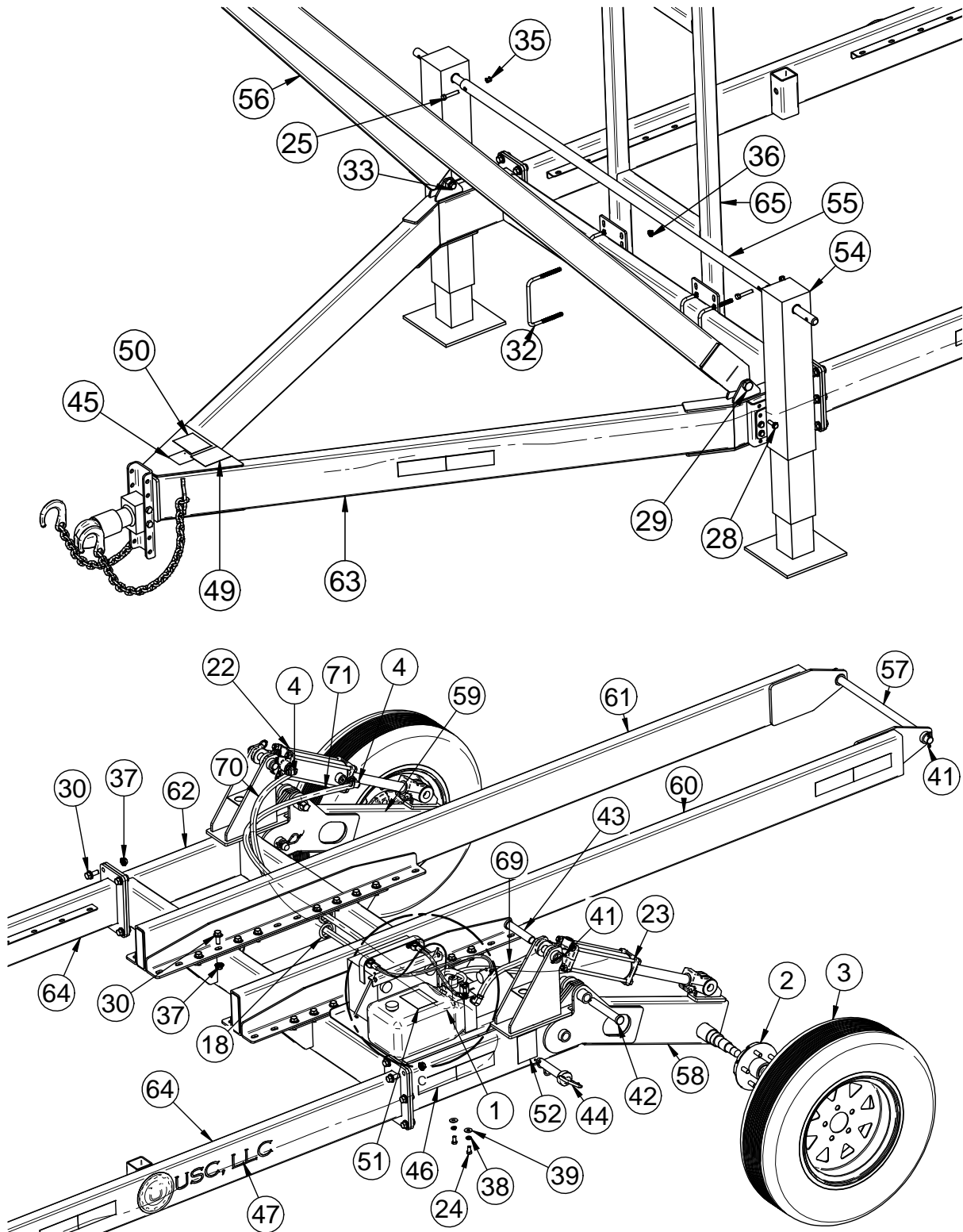
PART #		13-08-0926 REV A0		
Item #	Part #	Description	Qty	See Page
1	01-06-0150	ASSY WHL/TIRE 5BLT-15.0X6.0 6PLY	2	
2	05-08-0704	WDMT HITCH OFFSET	1	
3	05-08-0871	WDMT BRACE CROSS UC	1	
4	05-08-0874	WDMT ARM LOWER FL3 UNCG	2	
5	05-08-0880	WDMT ARM UPPER FL3 35FT UNCG	2	
6	06-01-0065	BOLT .750-10 X 2.00 ZP GR5	4	
7	06-01-0232	BOLT FLG .500-13 X 1.250 ZP GR5	16	
8	06-02-0029	NUT NYL LOCK .750-10 ZP GR5	4	
9	06-03-0015	NUT LOCK FLG .500-13 ZP GR5	16	
10	06-09-0039	PIN CLIP HITCH 2.625 #11 1/8 IN ZP	1	
11	06-09-0095	PIN CLVS .750 X 3.00 ZP	1	
12	08-08-0229	TRLR JACK 2000LB 15IN	1	
13	13-08-0918	WDMT JACK FRAME FL	1	
14	13-08-0922	ASSY AXLE FL3 UNCG	1	53

FIELD LOADER CONVEYOR
ASSEMBLY AXLE (13-08-0922 REV A0)

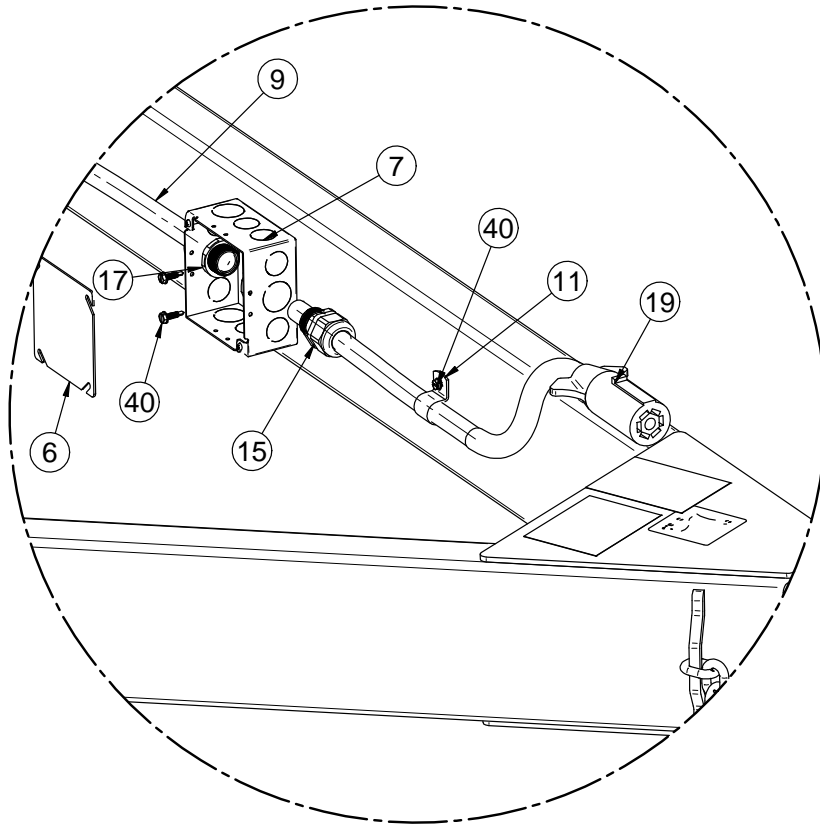
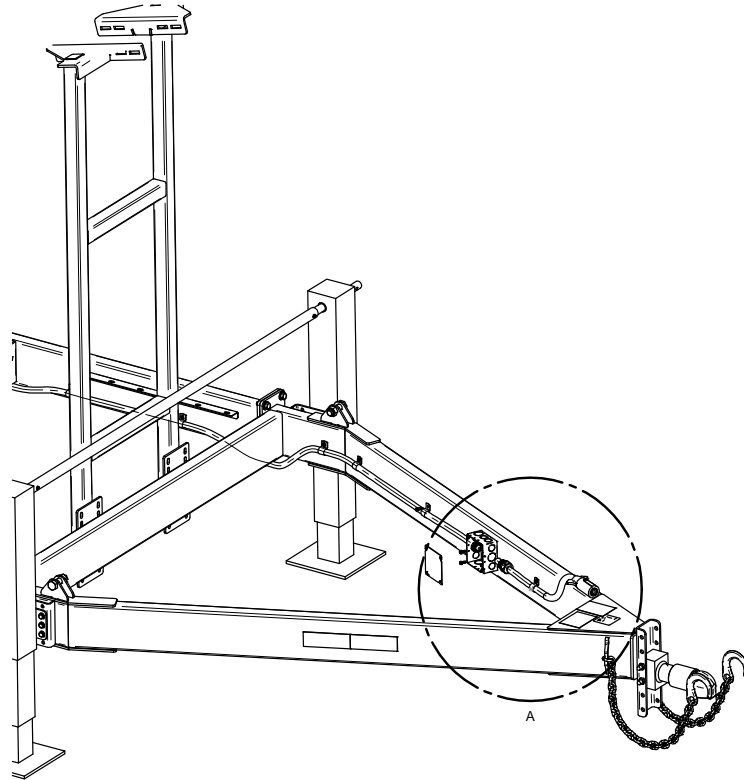


11		13-08-0922 REV A0	
Item #	Part #	Description	Qty
1	01-06-0053	HUB 5 ON 4.5IN CTR	2
2	05-08-0875	WDMT AXLE FL3 UNCG	1

ASSEMBLY TRAILER (13-05-0941 REV A0)



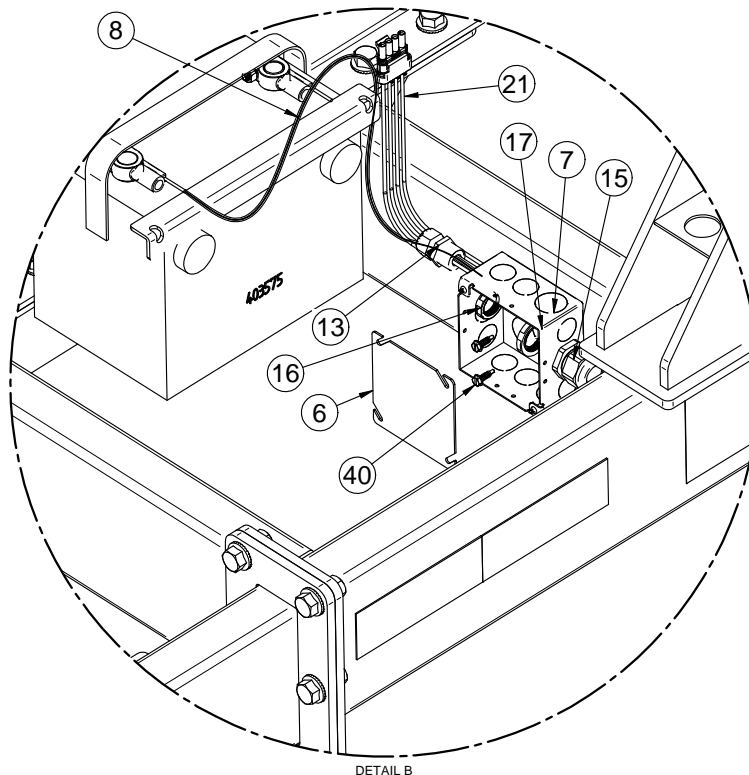
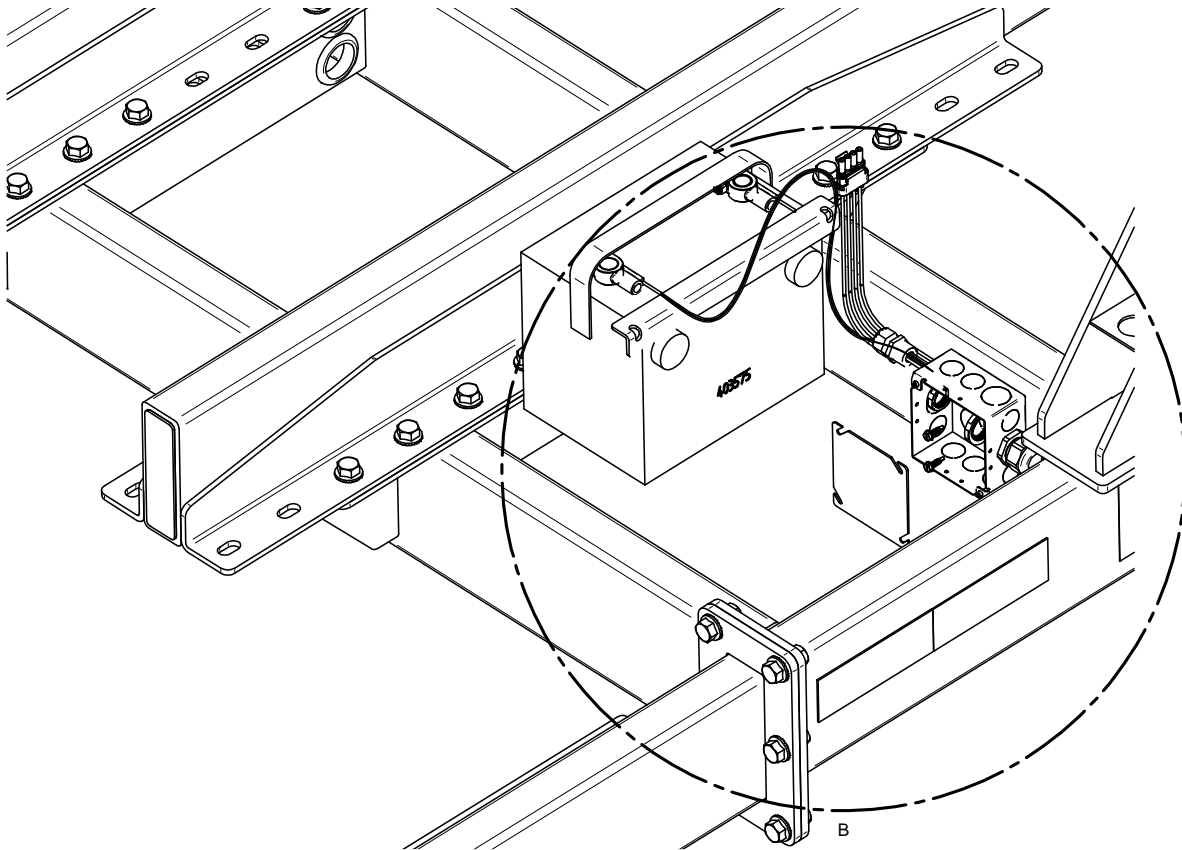
ASSEMBLY TRAILER (13-05-0941 REV A0)



DETAIL A

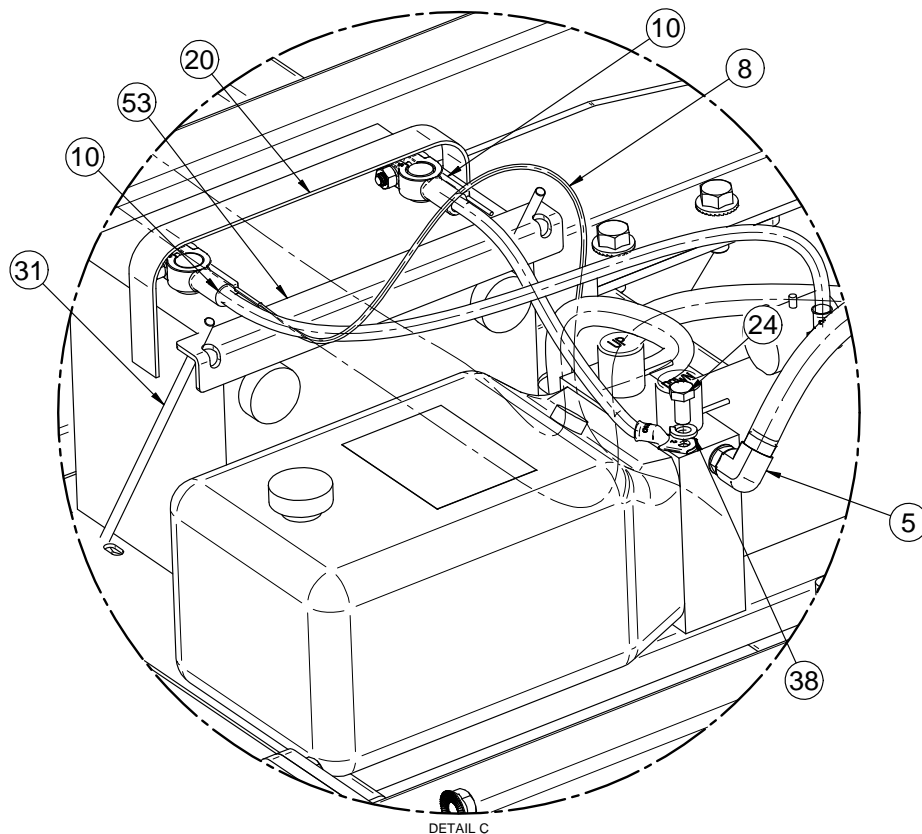
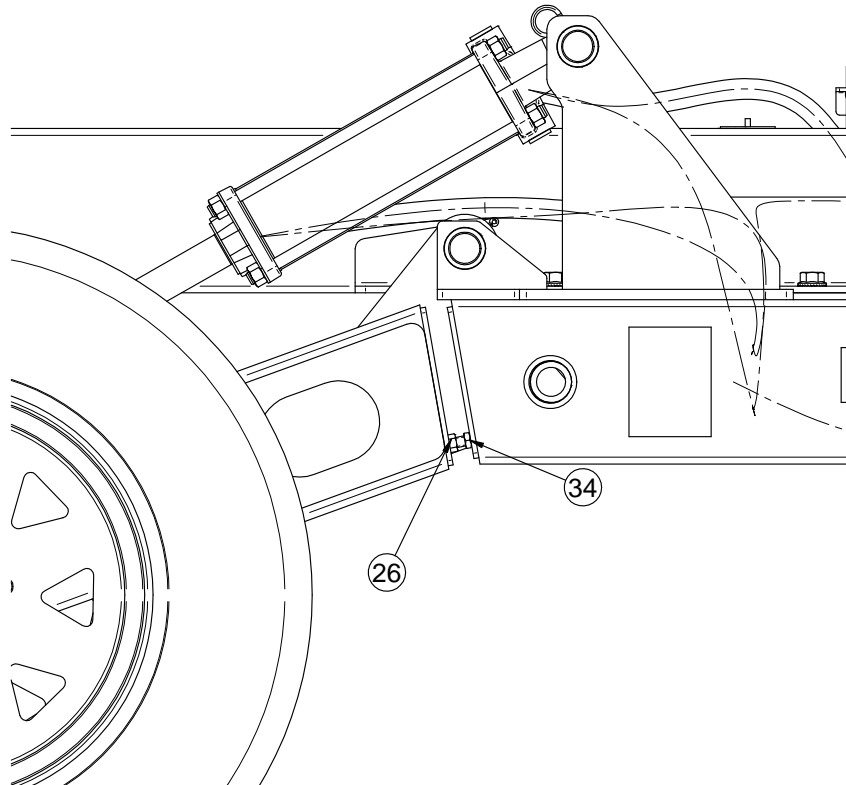
FIELD LOADER CONVEYOR

ASSEMBLY TRAILER (13-05-0941 REV A0)



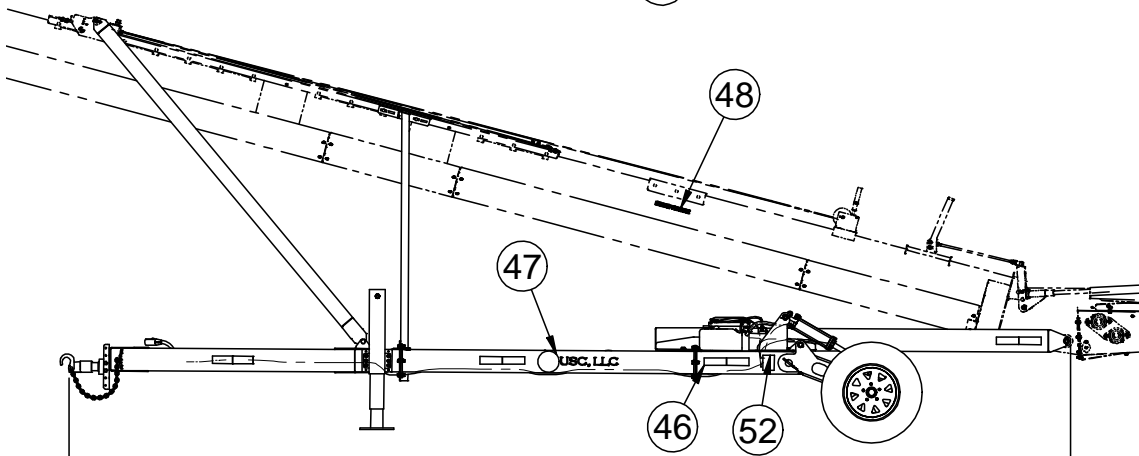
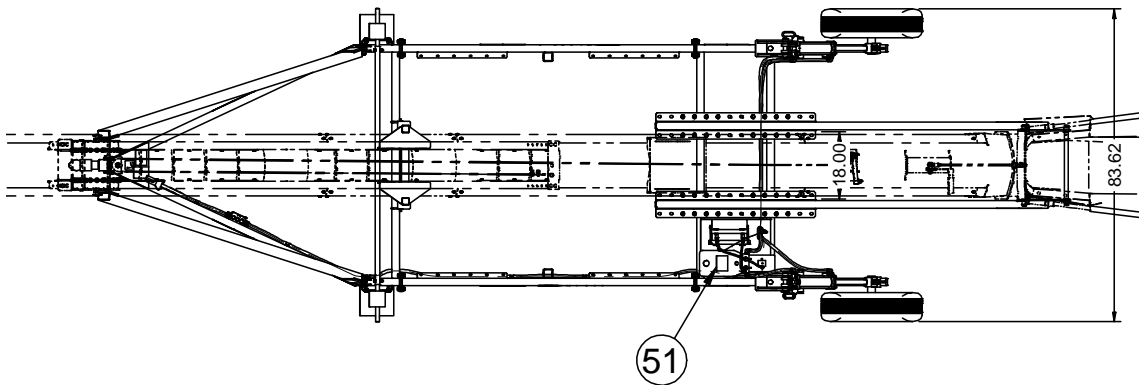
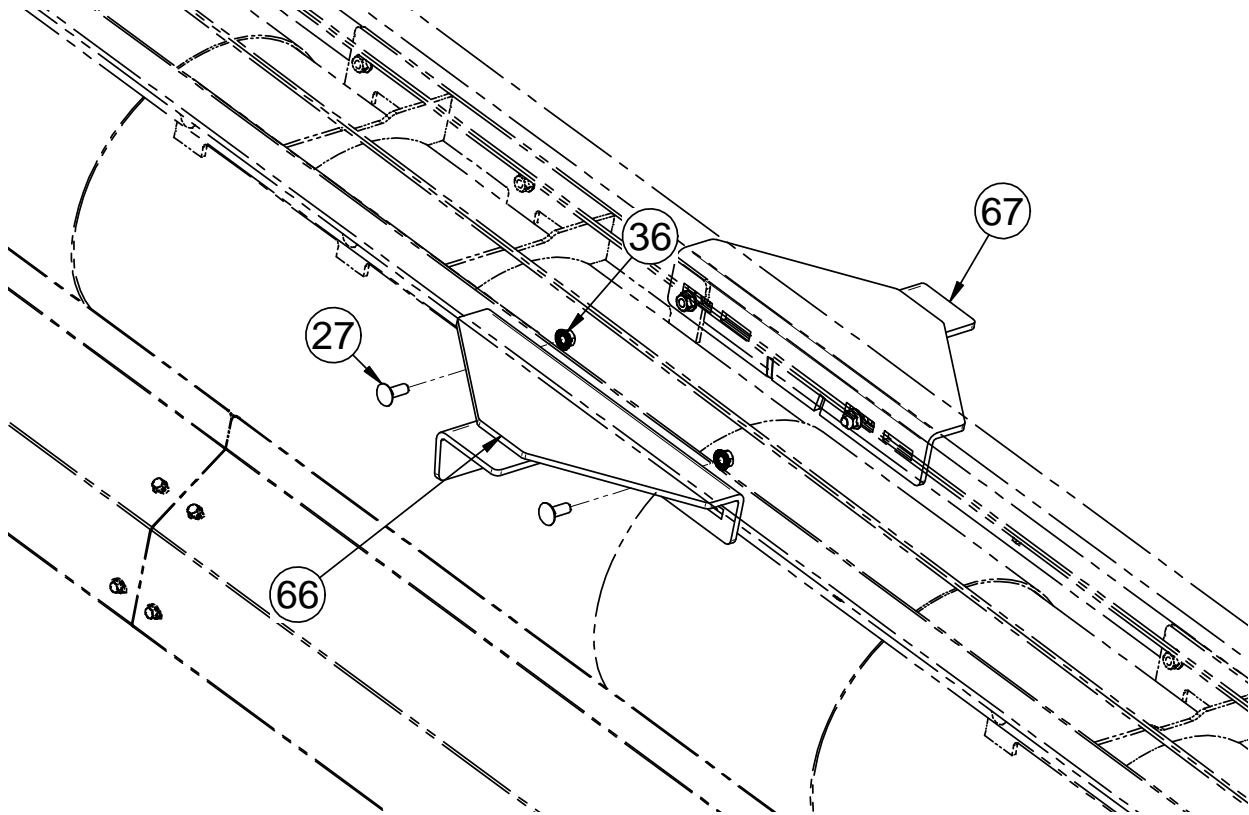
DETAIL B

FIELD LOADER CONVEYOR
ASSEMBLY TRAILER (13-05-0941 REV A0)



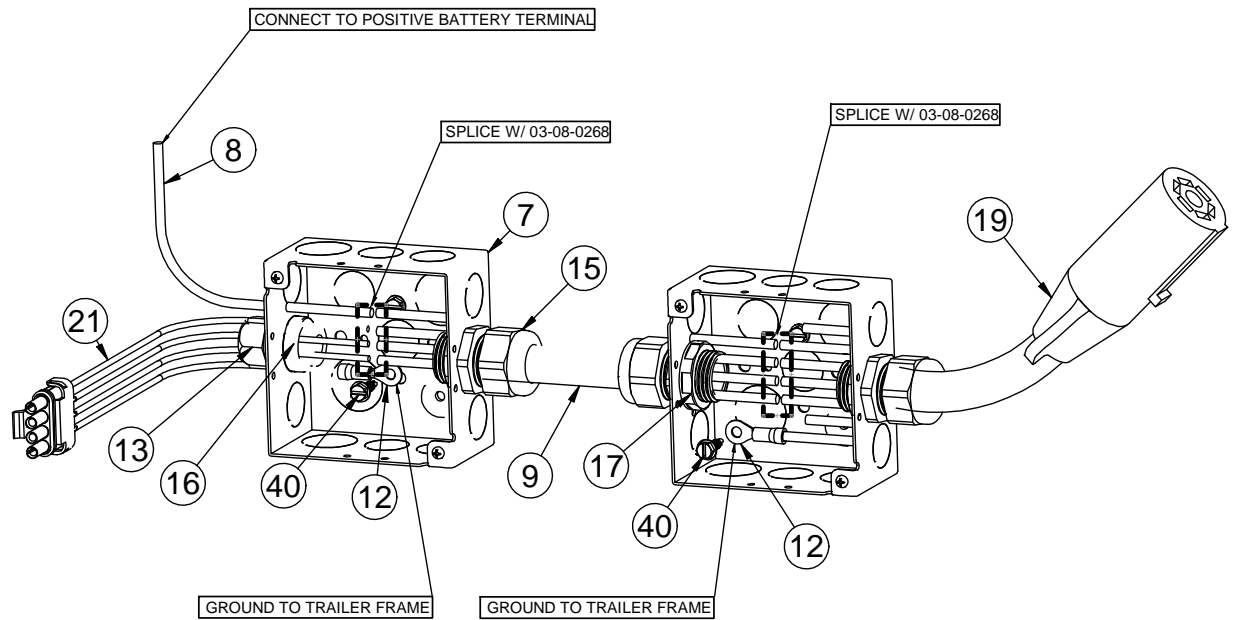
DETAIL C

ASSEMBLY TRAILER (13-05-0941 REV A0)



FIELD LOADER CONVEYOR
ASSEMBLY TRAILER (13-05-0941 REV A0)

WIRING DETAIL



FIELD LOADER CONVEYOR

ASSEMBLY TRAILER (13-05-0941 REV A0)

PART #		13-05-0941 REV A0	
Item #	Part #	Description	Qty
1	01-01-0308	HYD POWER PACK 12VDC 1.3GPM 2500PSI	1
2	01-06-0053	HUB 5 ON 4.5IN CTR	2
3	01-06-0150	ASSY WHL/TIRE 5BLT-15.0X6.0 6PLY	2
4	02-06-0058	FTTG HYD 90 DEG 8MJ-8MOR	4
5	02-06-0065	FTTG HYD 90 DEG 8MJ-6MOR	2
6	03-05-0028	JB CVR 4SQ BLANK	2
7	03-05-0057	JB 4SQ 2.00 WITH .500 & .750 KO	2
8	03-07-0031	WIRE 12AWG THHN BLK	2.33
9	03-07-0066	CORD 4COND 12AWG SEOW	13.33
10	03-07-0087	CBL BTRY 19IN TOP POST	2
11	03-08-0050	CNDT .500 STRP EMT	9
12	03-08-0122	CONN RING TNML 12-10AWG .250 STUD	2
13	03-08-0134	CONN CG PLAS 0.5NPT .100-.300	1
14	03-08-0268	CONN COMPACT TNML BLK 2-CON	8
15	03-08-0300	CONN CG .75NPT .450-.709 3235LTF	3
16	03-08-0308	NUT NYLOC .500 NPT 8464	1
17	03-08-0309	NUT NYLOC .750 NPT 8466	3
18	03-09-0035	GRMT RBBR 1.5 ID X 2.125 OD	8
19	03-14-0008	TRLR CORD 8FT WITH 7 POLE PLUG	1
20	03-14-0009	BTRY 12V	1
21	03-14-0012	TRLR HARNESS 4 PIN VHCL END 48"	1
22	03-17-0168	CYL HYD REPHG 3.00 X 8 3000PSI	1
23	03-17-0169	CYL HYD REPHG 3.25 X 8 3000PSI	1
24	06-01-0015	BOLT .375-16 X .750 ZP GR5	3
25	06-01-0020	BOLT .375-16 X 2.00 ZP GR5	2
26	06-01-0066	BOLT .375-16 X 1.25 SS 18-8	2
27	06-01-0115	BOLT CRG .375-16 X 1.00 ZP GR5	4
28	06-01-0189	BOLT FLG .375-16 X 1.250 ZP GR5	12
29	06-01-0213	BOLT .750-10 X 2.50 ZP GR8	2
30	06-01-0232	BOLT FLG .500-13 X 1.250 ZP GR5	52
31	06-01-0285	BOLT J .250-20 X 10 (PKG OF 2)	1
32	06-01-0395	BOLT U .375-16 X 6.00 X 4.625 ZP SQ	4
33	06-02-0029	NUT NYL LOCK .750-10 ZP GR5	2
34	06-02-0061	NUT JAM .375-16 ZP GR5	2
35	06-03-0003	NUT NYL LOCK .375-16 ZP GR5	3
36	06-03-0014	NUT LOCK FLG .375-16 ZP GR5	24

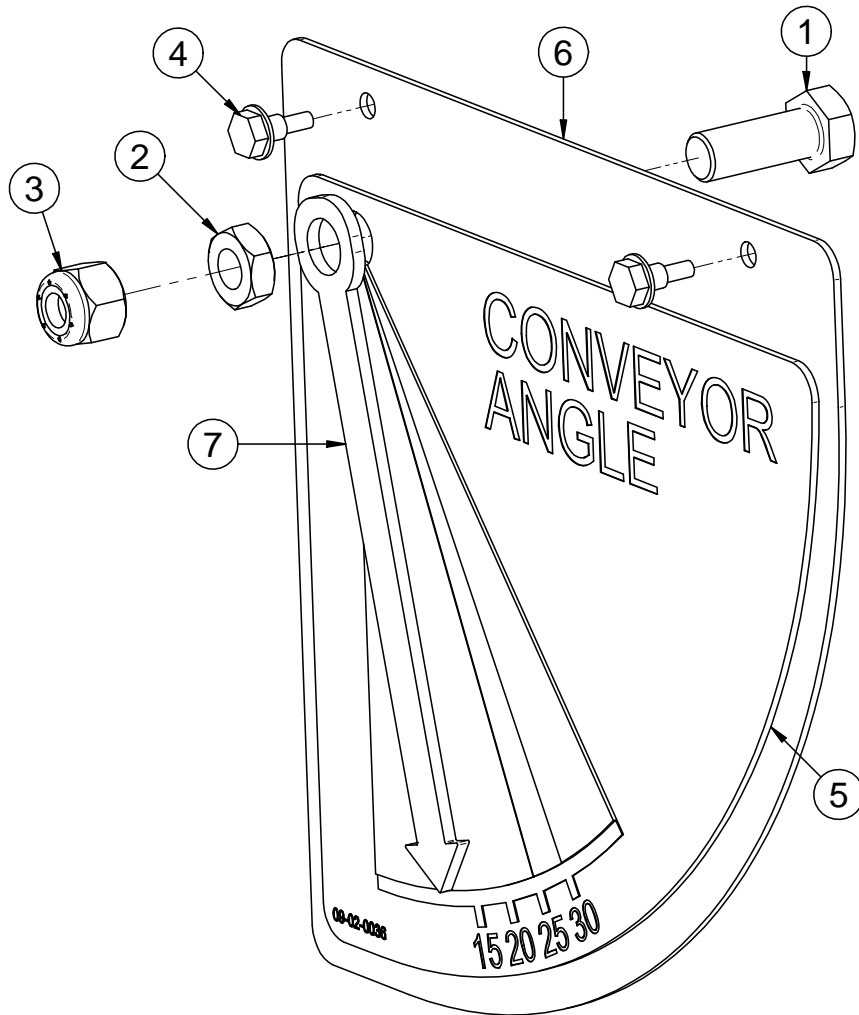
FIELD LOADER CONVEYOR

ASSEMBLY TRAILER (13-05-0941 REV A0)

PART #		13-05-0941 REV A0	
Item #	Part #	Description	Qty
37	06-03-0015	NUT LOCK FLG .500-13 ZP GR5	52
38	06-04-0003	WSHR LOCK SPLT .375 ZP	2
39	06-05-0004	WSHR FLAT .375 ZP	2
40	06-06-0023	SCRW SDST 10-16 X .750 HH WSHR ZP	13
41	06-09-0023	PIN CTTR .188 X 2.00 ZP	6
42	06-09-0067	PIN CLVS 1.00 X 6.00 ZP	2
43	06-09-0108	PIN CLVS 1.00 X 5.0 ZP	2
44	06-09-0137	PIN HITCH 1.00 X 4.50	2
45	09-01-0003	ATWK LBL MADE IN USA YEL 2.50X2.50	1
46	09-01-0012	TRLR TAPE REFLECTIVE RED WHT 2.00	8
47	09-01-0043	ATWK LBL USC 22.00 X 5.75 PRO-CUT	2
48	09-01-0064	LBL ATWK PAT PEND	2
49	09-02-0028	LBL ATWRK GSI OVERHEAD LINE DC-2467	1
50	09-02-0032	LBL ATWRK GSI CNVR OPP DC-2471	1
51	09-02-0033	LBL ATWRK GSI SKIN HAZZARD DC-2486	1
52	09-02-0034	LBL ATWRK GSI CRUSH HAZRD DC-2487	2
53	10319D-11	ANGLE BATTERY HOLD-DOWN	1
54	1073D3-11	JACK WDMT	1
55	1073D4-11	JACK EXTENSION TUBE	1
56	1073E2-11	WDMT UPPER ARM	2
57	1073EA-11	CNVR MNT PIN	1
58	1073F0-11	AXLE WDMT LT	1
59	1073F1-11	AXLE WDMT RT	1
60	107405-11	WDMT CNVR MNT LT	1
61	107406-11	WDMT CNVR MNT RT	1
62	1074B9-11	WDMT REAR TRLR FRM	1
63	1074BE-11	WDMT FRONT TRLR FRM	1
64	1074C2-11	WDMT MID FRM 35FT	2
65	1074DE-11	WDMT CNVR STOP	1
66	1074E2-11	WDMT CNVR STOP LT	1
67	1074E6-11	WDMT CNVR STOP RT	1
68	11-14-0002	OIL HYD DTE 24 5GAL	0
69	13-05-0459	HHA .375ID 013.5IN -08FJX -08FJX	1
70	13-05-0600	HHA .375ID 090.0IN -08FJX -08FJX	1
71	13-05-0841	HHA .375ID 077.0IN -08FJX -08FJX	1

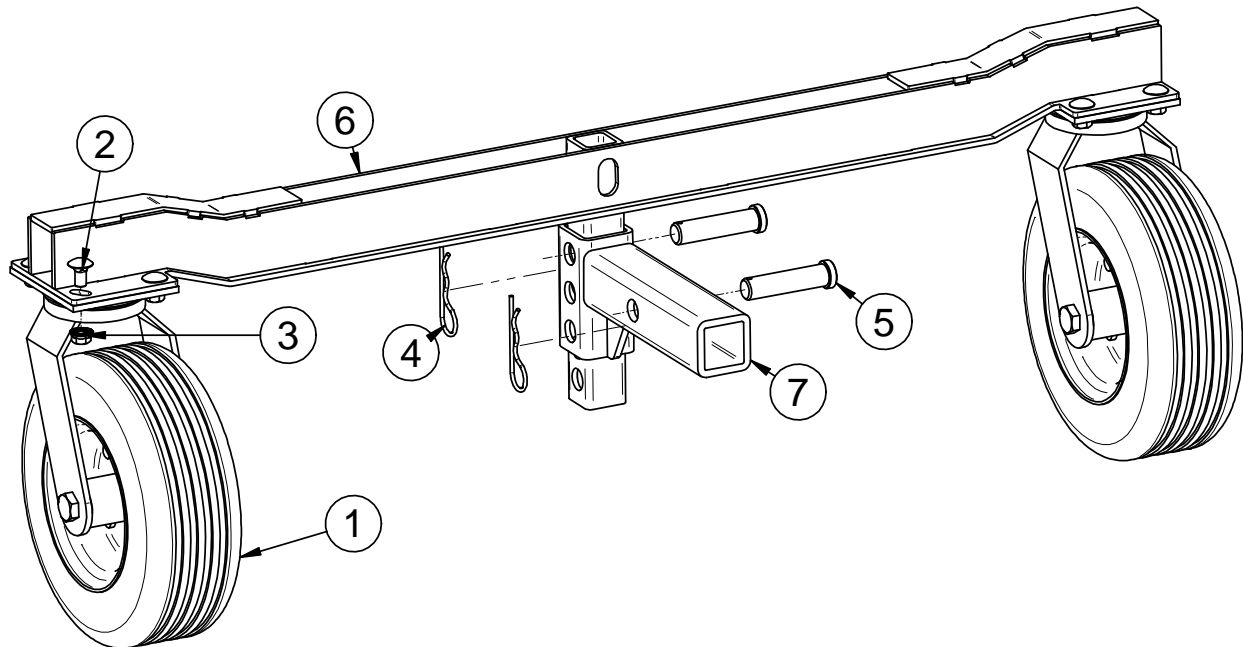
FIELD LOADER CONVEYOR

ASSEMBLY ANGLE INDICATOR (1075B1 REV A0)



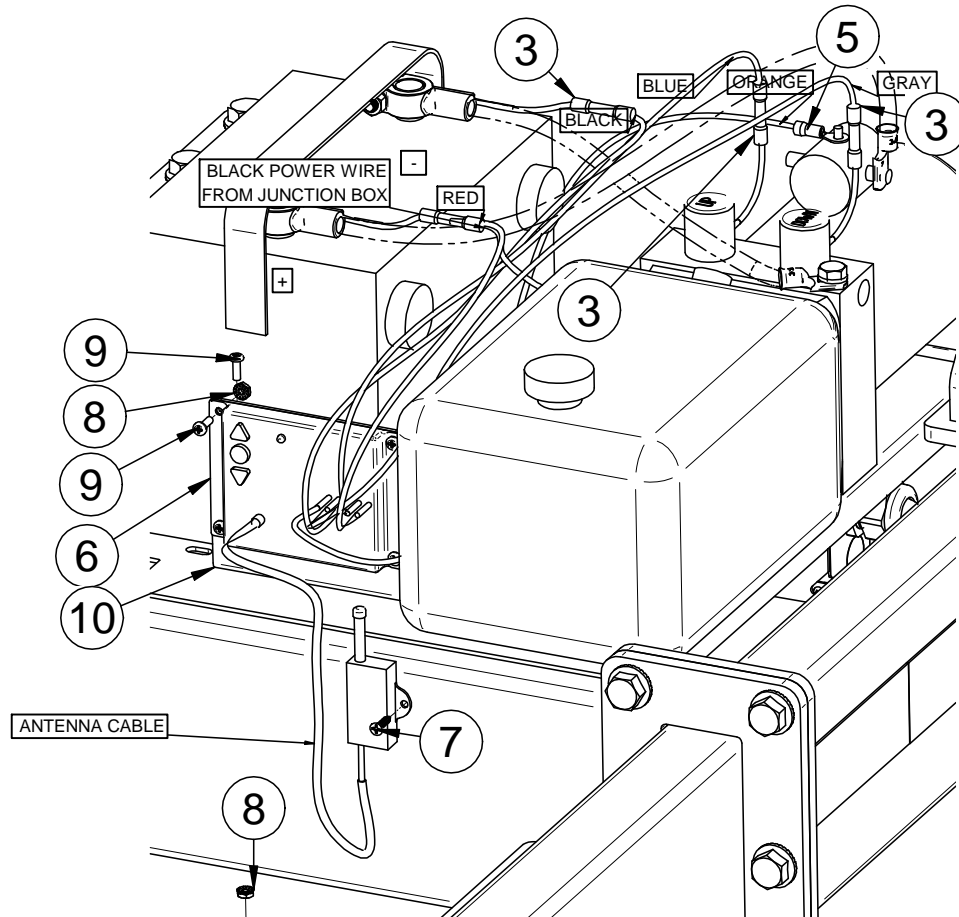
PART #		1075B1 REV A0	
Item #	Part #	Description	Qty
1	06-01-0016	BOLT .375-16 X 1.00 ZP GR5	1
2	06-02-0061	NUT JAM .375-16 ZP GR5	1
3	06-03-0003	NUT NYL LOCK .375-16 ZP GR5	1
4	06-06-0005	SCRW SDST 10-16 X .500 HH WSHR ZP	2
5	09-02-0036	LBL ATWRK CNVR ANGLE	1
6	107516	PLT ANGLE INDI BACK	1
7	107517-11	PLT ANGLE INDI	1

FIELD LOADER CONVEYOR
ASSEMBLY CASTER KIT (13-05-0942 REV A0)



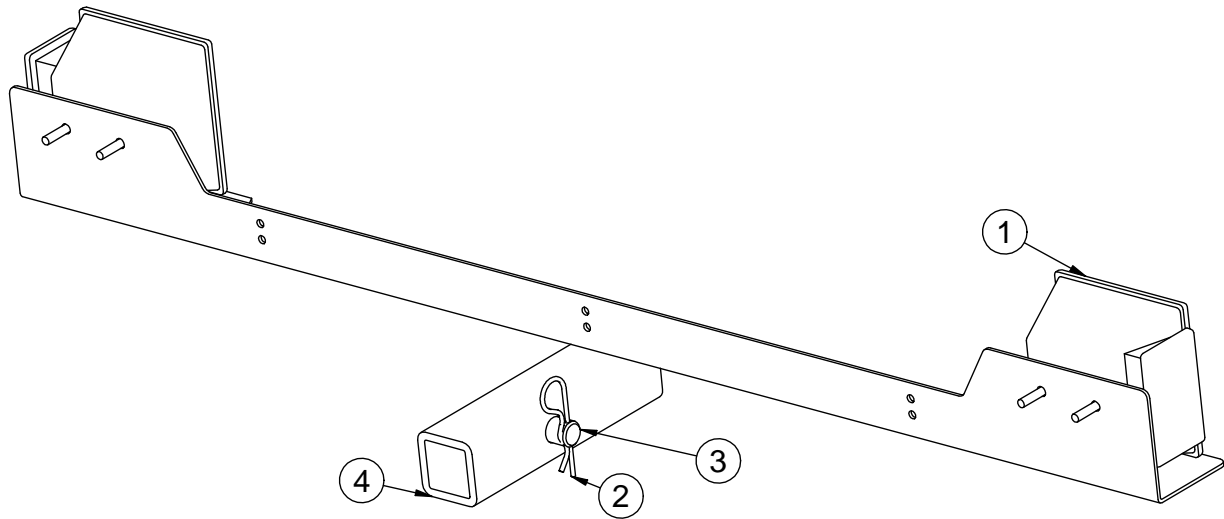
PART #		13-05-0942 REV A0	
Item #	Part #	Description	Qty
1	01-06-0184	WHL CSTR 10.0 X 3.5 SWVL	2
2	06-01-0153	BOLT CRG .375-16X.750 ZP SHORT NECK	8
3	06-03-0014	NUT LOCK FLG .375-16 ZP GR5	8
4	06-09-0039	PIN CLIP HITCH 2.625 #11 1/8 IN ZP	2
5	06-09-0095	PIN CLVS .750 X 3.00 ZP	2
6	1074F0-11	WDMT CSTR MNT	1
7	1074F4-11	WDMT CSTR RCVR ADPTR	1

FIELD LOADER CONVEYOR
KIT HYDRAULIC REMOTE (13-05-0944 REV A0)



PART #		13-05-0944 REV A0	
Item #	Part #	Description	Qty
1	03-07-0004	WIRE 14AWG THHN BLK	5
2	03-08-0020	CONN BS HS 12-10AWG	1
3	03-08-0021	CONN BS HS 16-14AWG	8
4	03-08-0086	TBG HS .375 EXPD .188 SHRANK PVC*	10
5	03-08-0201	CONN RING TMNL 14-16AWG #6-10 STUD	1
6	03-10-0178	REMOTE CNTL 2-FNCT 12VDC	1
7	06-01-0183	SCRW SDST 8-18 X .750 FH ZP	1
8	06-02-0034	NUT KLOCK 8-32 ZP	6
9	06-06-0004	SCRW MACH 8-32 X .500 PHLP RDHD ZP	6
10	10752D-11	PLT REMOTE MNT BRKT	1

FIELD LOADER CONVEYOR
KIT LIGHTS (13-05-0943 REV A0)



PART #		13-05-0943 REV A0	
Item #	Part #	Description	Qty
1	03-10-0177	TRLR 2 LGHT KIT	1
2	06-09-0039	PIN CLIP HITCH 2.625 #11 1/8 IN ZP	1
3	06-09-0095	PIN CLVS .750 X 3.00 ZP	1
4	107471-11	WDMT LIGHT BRKT	1

FIELD LOADER CONVEYOR
INDEX BY PART NUMBER

PART #	DESCRIPTION	PAGE #
	EXPLODED VIEW OF SYSTEM. TRAILER	20
	MOTOR CHART	27
01-01-0310	HYD PWR PKG 20HP TFL 35FT	29
10755E	ASSY TANK FUEL 6 GAL	37
107569-17	ASSY HYD DRV TFL	36
1075B1	ASSY ANGLE INDI	62
13-05-0659	ASSY BELT SHAFT W/BRGS	48
13-05-0774	BEAR ADJ PLT ASSY FL	47
13-05-0844	ASSY BEARING ADJ FL45	25
13-05-0901	ASSY HEAD FL3	23
13-05-0902	ASSY RETURN ROLLER FL3	38
13-05-0903	ASSY SLIDE TOP MNT	39
13-05-0915	ASSY CLMP 4 BOLT 12IN ID CS FL3	40
13-05-0916	KIT BELLY PAN FL3 35FT	49
13-05-0941	ASSY TFL TRLR 35FT	55
13-05-0942	ASSY TFL CSTR KIT	63
13-05-0943	ASSY TFL LIGHT KIT	65
13-05-0944	ASSY TFL REMOTE HYD KIT	64
13-05-0953	KIT DRV 10HP TFL CNVRS	26
13-08-0761	ASSY LINK TARP LIFT FL	46
13-08-0885	HOPPER ASM FL	43
13-08-0886	HOPPER FRAME ASSY	45
13-08-0922	ASSY AXLE FL3 UNCG	53
13-08-0923	ASSY INLET FL3	41
13-08-0925	ASSY FL3 35FT BASE	21
13-08-0926	UNCRG FL3 35FT ASM	50
13-08-0929	ASSY HYD MTR TFL	28

FIELD LOADER CONVEYOR

NOTES:

USC LIMITED WARRANTY

SECTION I

USC, LLC, (Manufacturer) warrants its seed treating equipment as follows:

1. **Limited Warranty:** Manufacturer warrants that the Products sold hereunder will be free from defects in material and workmanship for a period of 12 months from date of USC receipt of warranty card. If the Products do not conform to this Limited Warranty during the warranty period, Buyer shall notify Manufacturer in writing of the claimed defects and demonstrate to Manufacturer satisfaction that said defects are covered by this Limited Warranty. If the defects are properly reported to Manufacturer within the warranty period, and the defects are of such type and nature as to be covered by this warranty, Manufacturer shall, at its expense, furnish replacement Products or, at Manufacturer's option, replacement parts for the defective products. Shipping and installation of the replacement Products or replacement parts shall be at the Buyer's expense.

2. **Other Limits:** THE FOREGOING IS IN LIEU OF ALL OTHER WARRANTIES, EXPRESSED OR IMPLIED, INCLUDING BUT NOT LIMITED TO THE IMPLIED WARRANTIES OF MERCHANTABILITY AND FITNESS FOR A PARTICULAR PURPOSE. Manufacturer does not warrant against damages or defects arising from improper installation (where installation is by persons other than Manufacturer), against defects in products or components not manufactured by Manufacturer, or against damages resulting from such non-Manufacturer made products or components. Manufacturer passes on to the Buyer the warranty it received (if any) from the maker of such non-Manufacturer made products or components. This warranty also does not apply to Products upon which repairs and / or modifications have been effected or attempted by persons other than pursuant to written authorization by Manufacturer. This includes any welding on equipment which could damage electrical components. Manufacturer does not warrant against casualties or damages resulting from misuse and / or abuse of Products, improper storage or handling, acts of nature, effects of weather, including effects of weather due to outside storage, accidents, or damages incurred during transportation by common carrier.

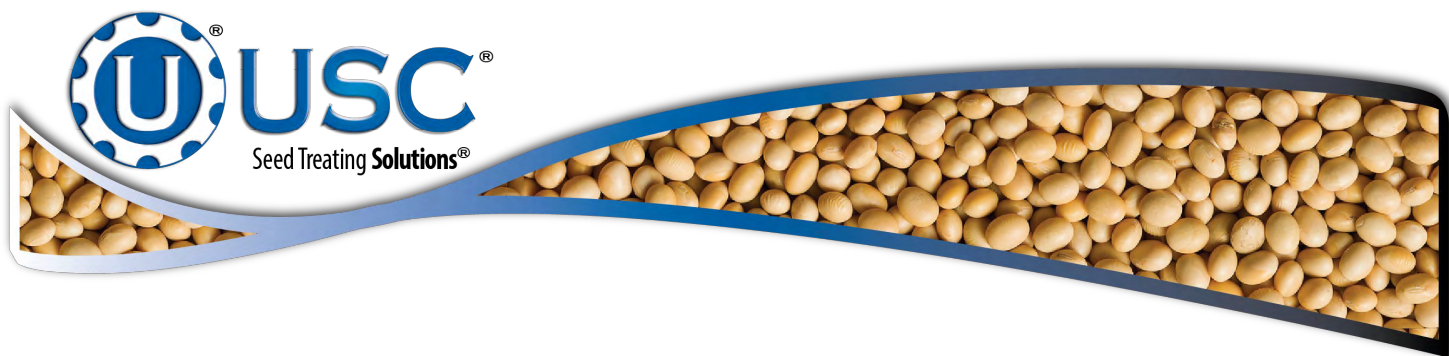
3. **Exclusive Obligation:** THIS WARRANTY IS EXCLUSIVE. The sole and exclusive obligation of Manufacturer shall be to repair or replace the defective Products in the manner and for the period provided above. Manufacturer shall not have any other obligation with respect to the Products or any part thereof, whether based on contract, tort, strict liability or otherwise. Under no circumstances, whether based on this Limited Warranty or otherwise, shall Manufacturer be liable for lost profits, lost revenue, lost sales (whether direct or indirect damages), incidental, special, punitive, indirect or consequential damages.

4. **Other Statements:** Manufacturer's employees or representatives' oral or other written statements do not constitute warranties, shall not be relied upon by Buyer, and are not a part of the contract for sale or this limited warranty.

5. **Return Policy:** Approval is required prior to returning goods to Manufacturer. A restocking fee will apply.

6. **Entire Obligation:** This Limited Warranty states the entire obligation of Manufacturer with respect to the Products. If any part of this Limited Warranty is determined to be void or illegal, the remainder shall remain in full force and effect.

US / Canada Non-Exclusive 2016



DOCUMENT REVIEW RECORD	
DATE	BY
04-2020	BT

USC, LLC

2320 124th road

Sabetha, KS 66534

PHONE: (785) 431-7900

EMAIL: sales-team@uscllc.com

WEB: www.uscllc.com