



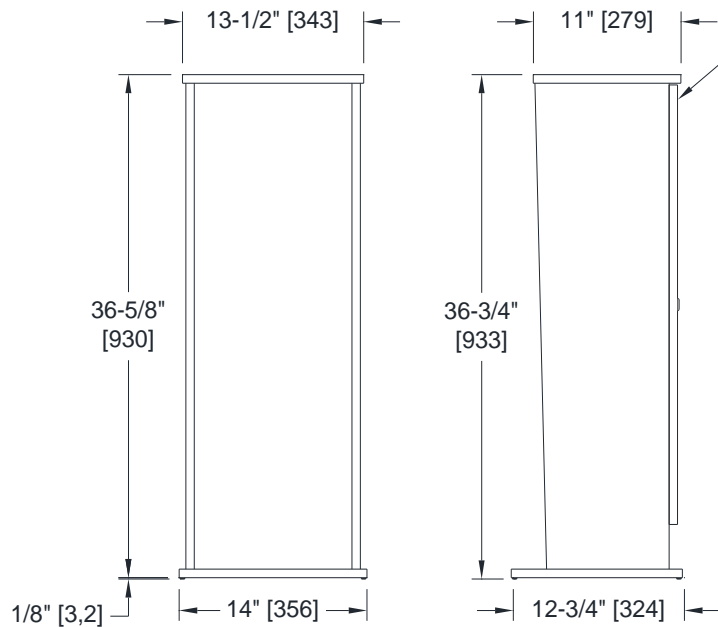
**AMERICAN SPECIALTIES, INC.**  
441 Saw Mill River Road, Yonkers, NY 10701  
(914) 476.9000 • (914) 476.0688  
www.americanspecialties.com

**MODEL №:** FS-0700

**ISSUED:** 15 SEP 2020

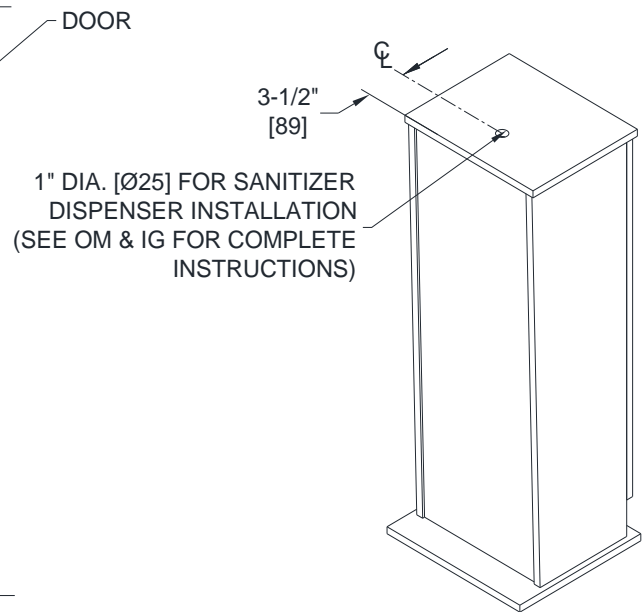
**REVISED:** 16 OCT 2020

## FREESTANDING PLASTIC LAMINATE SANITIZING STATION (Pg 1 of 2)

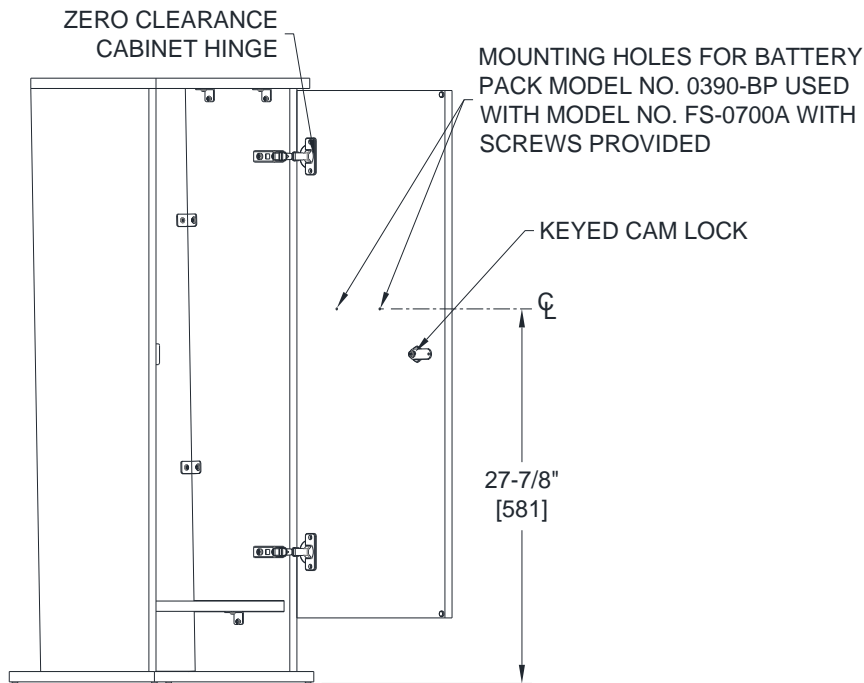


**FRONT VIEW**

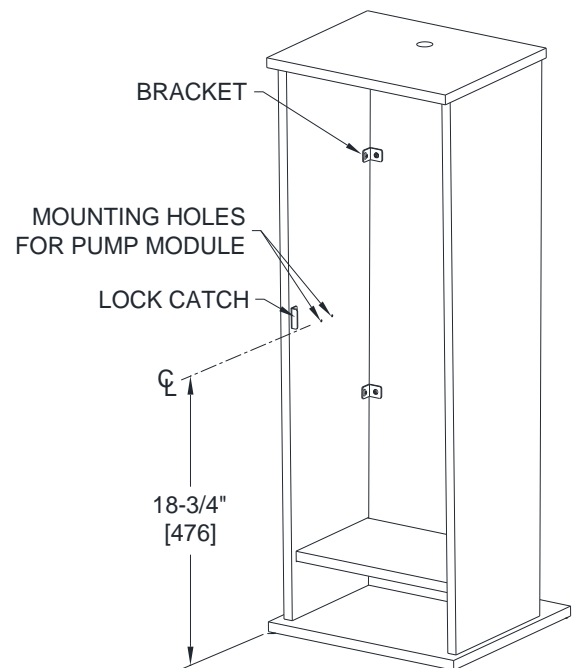
**SIDE VIEW**



**ISOMETRIC**



**INTERIOR VIEW /  
DOOR OPEN**



**INTERIOR VIEW /  
DOOR NOT SHOWN FOR CLARITY**

### **NOTE**

ALL DIM'S INCH [MM]

ILLUSTRATION FOR REF ONLY AND NTS

FOR CLEANING INSTRUCTIONS SEE APPROPRIATE SECTIONS IN PRODUCT CARE & MAINTENANCE BULLETIN (PCM) ON ASI WEBSITE



**AMERICAN SPECIALTIES, INC.**  
441 Saw Mill River Road, Yonkers, NY 10701  
(914) 476.9000 • (914) 476.0688  
www.americanspecialties.com

**MODEL №: FS-0700**

**ISSUED: 15 SEP 2020**

**REVISED: 16 OCT 2020**

## **FREESTANDING PLASTIC LAMINATE SANITIZING STATION (Pg 2 of 2)**

### **SPECIFICATION**

Freestanding Plastic Laminate Sanitizer Station shall be constructed with panels made of antimicrobial plastic laminate bonded with non-toxic adhesive to particle board core and shall be 5/8" [16] thick. The Plastic laminate color shall be Cosmic Strandz (see product page on website for reference). Stand shall be freestanding to enable placement by Facility Manager/Owner in any convenient location desired to serve occupant/visitor traffic. Interior of stand is accessible from lockable door on back of stand. Door shall be attached to back of stand with two (2) zero-clearance concealed cabinet hinges and shall be held closed with a keyed, nickel-plated zinc cam lock. Top surface of stand shall have 1" Dia. [Ø25] hole for dispenser spout installation. Side panel inside (RH) shall have mounting holes to accommodate pump module wall bracket and inside face of door shall have mounting holes to accommodate battery box. Brackets shall be used for structural assembly of cabinet panel components and shall be 16 gage type 304 stainless steel alloy 18-8 with polished finish. The bottom shelf in stand shall have a gap to inside of closed door (see OM&IG for retaining method) for cord to exit cabinet when using the 0390-HSD-1AC unit. Fasteners used on the interior of the cabinet shall be zinc-plated steel. Fasteners used on base shall be stainless steel. Base has silicone rubber feet to prevent sliding. Stand is freestanding for flexibility of placement and repositioning. All edges and corners have 1/16" Radius [R 1,6] for smooth surface transitions. Unit is shipped assembled.

**Freestanding Plastic Laminate Sanitizing Station shall be Model № FS-0700-(n)-\_\_\_ {insert A for battery or AC for AC Adapter operation} as manufactured by American Specialties, Inc., 441 Saw Mill River Road, Yonkers, NY 10701-4913**

### **INSTALLATION**

Hardware is provided to install dispenser components inside the stand using the pre-drilled mounting holes. Unit should be placed in location to maximize access by pedestrian traffic and not interfere with any accessible route clearances. See OM & IG for complete installation of dispenser units onto and within stand.

### **OPERATION**

Sanitizing Station provides stable, tip and skid resistant location for sanitizer dispenser convenient to visitor and facility occupant traffic flow. Locked Station door prevents unauthorized access or removal of dispenser from the stand. See OM & IG for complete description of features and operations.



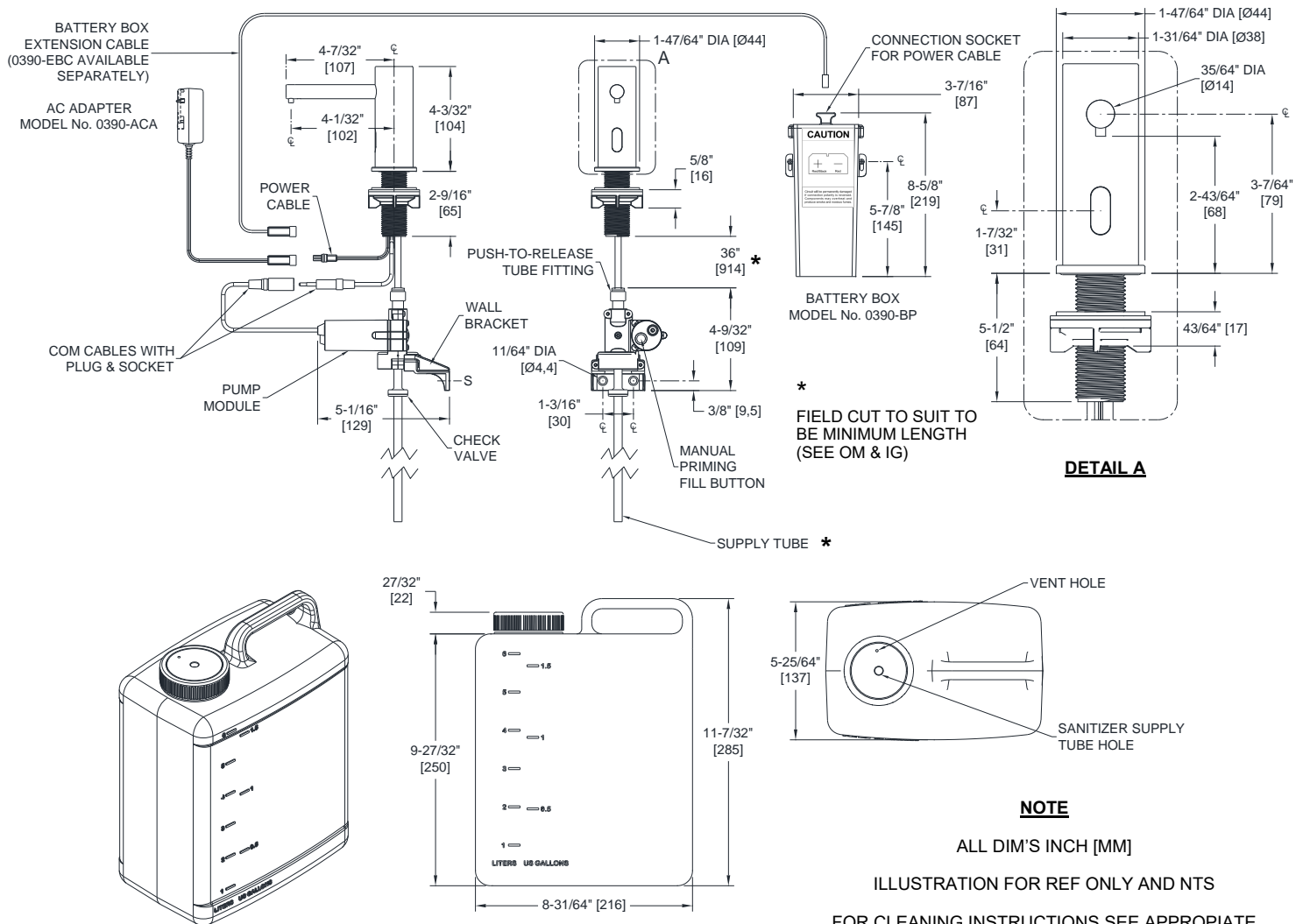
**AMERICAN SPECIALTIES, INC.**  
441 Saw Mill River Road, Yonkers, NY 10701  
(914) 476.9000 • (914) 476.0688  
www.americanspecialties.com

**MODEL №:** 0390-HSD

**ISSUED:** 8 AUG 2020

**REVISED:**

## PODIUM MOUNTED AUTOMATIC GEL HAND SANITIZER DISPENSER (HSD)



### NOTE

ALL DIM'S INCH [MM]

ILLUSTRATION FOR REF ONLY AND NTS

FOR CLEANING INSTRUCTIONS SEE APPROPRIATE  
SECTIONS IN PRODUCT CARE & MAINTENANCE BULLETIN  
(PCM) ON ASI WEBSITE

## SPECIFICATION

Podium Mounted Automatic Gel Hand Sanitizer Dispenser (HSD) System shall dispense Gel Sanitizer in stream cycles with volume of approximately 0.03 oz (0.8 ml). Gel Sanitizer must be within the viscosity range of 3.5k – 6.5k cP (mPa·s) and have a pH in range of  $7 \pm 1.5$ . Operation is initiated by no-touch sensor controlled by microprocessor digital circuitry. Delivery is accomplished by peristaltic pump powered by six (6) D size 1.5 V batteries (supplied by others) in a screw-locked IP67 rated battery box (Model № 0390-BP, provided) located inside podium or an AC Adapter (also IP67 rated, provided, Model № 0390-ACA) plugged into GFCI outlet (by others) as chosen by HSD Model № selected. HSD shall have chrome plated spout and sensor housing with a highly polished finish over all exposed surfaces and shall have an LED in sensor to indicate function and battery condition (if so provided). HSD shall mount on vanity deck up to 1-53/64" (46,7) thick through 1" DIA [Ø25] hole minimum to 1-1/4" [Ø32] max. Gel Sanitizer supply shall be from Tank (supplied) with capacity of 205 oz (1.6 Gal) [6L] of Sanitizer containing no abrasives or particulates, located inside podium, through connection to provided supply tubing. Owner's Manual and Installation Guide (OM & IG) shall be provided with unit in carton.

**Podium Mounted Automatic Gel Hand Sanitizer Dispenser (HSD) System shall be Model № 0390- HSD-(n) {insert -1A or -1AC for "n", see chart} of American Specialties, Inc., 441 Saw Mill River Road, Yonkers, NY 10701-4913**



**AMERICAN SPECIALTIES, INC.**  
441 Saw Mill River Road, Yonkers, NY 10701  
(914) 476.9000 • (914) 476.0688  
www.americanspecialties.com

**MODEL №:** 0390-HSD

**ISSUED:** 8 AUG 2020

**REVISED:**

## PODIUM MOUNTED AUTOMATIC GEL HAND SANITIZER DISPENSER (HSD)

### INSTALLATION

Install spout and sensor housing to vanity with rubber washers and basin nut (supplied) through 1" DIA [Ø25] mounting hole provided on top of podium. Mount pump-motor-control module to predrilled holes inside podium (see OM & IG) with two (2) № 8 x 1/2" Phillips pan head self-threading screws (supplied). Use tubing cutter to trim length of black flex supply tube from dispenser shank to 16" [406] long measured from shank bottom. Connect black flex tubing from shank to fitting on top of pump/control module. Cut clear flex tubing (provided attached to fitting on bottom of pump/control housing) from pump to 36" [914] long measured from pump bottom. Connect supply flex tubing to through-hole on tank cap (supplied) so that tube end is approximately 3/8" [10] above bottom of tank. Connect spout control cable plug into control unit inline cable connector. Mount battery box (Model № 0390-BP, provided) in location indicated (see OM & IG) with two (2) № 8 x 1/2" Phillips pan head self-threading screws (supplied) into pre-drilled holes. Ensure battery box cap is within easy reach of access door. Install six (6) D size 1.5 V cells (supplied by others) into battery compartment according to polarity indication, plug spout power cable jack into battery box socket in cover handle (note polarity indication on 0390-BP label) and screw lock cover. Alternatively plug AC Adapter into GFCI power outlet located under vanity within 13.5 ft (412 cm) of pump/control housing and plug connector into mating inline power connector (note polarity of plug and socket).

### OPERATION

System shall operate each time an object is positioned within the sensing range of 1-3/16" to 3-15/16"  $\pm$  3/8" (30 to 100  $\pm$  10) directly in front of the spout of the dispenser. A stream of appropriate viscosity nonabrasive Gel Sanitizer drops with total dispense amount of 0.03 oz (0.8 ml) will be pumped from the nozzle during each activation. HSD will dispense Sanitizer while batteries are at suitable charge level (or AC adapter is connected) and correct viscosity Gel Sanitizer is present in the tank and system is correctly maintained to enable dispensing (blue LED is not flashing continuously or does not remain dark when trigger attempt is made). LED will display blue flash for sensing and continuous flashing for low battery condition. Push-button on pump motor releases Gel Sanitizer for easy soap priming. HSD will draw Gel Sanitizer from tank as required to operate until supply level is depleted to below supply tube intake. Sanitizer is manually replenished and batteries are replaced on service interval determined by maintenance schedule. See OM & IG for complete description of Features and Operations.

Schedule of Model № Suffix Codes and Application

Model № Suffix	Service Application
1A	Universal Model, Battery Operation
1AC	Universal Model, AC Adapter Operation