

# PREMIER

THE ORIGINAL SOURCE / THE ORIGINAL DESIGN

## Skid Steer Loader & Tractor Loader **SNOW PLOW**

# OPERATOR'S MANUAL

Serial Number \_\_\_\_\_

Model Number \_\_\_\_\_



**WARNING!** Avoid injury or death. Read and understand this entire manual before installing, operating or servicing this equipment.

# TABLE OF CONTENTS

To The Owner .....	1
Warranty Registration Form .....	2
Warranty Policy .....	3
Safety Information .....	4 - 5
Operating Procedures .....	6 - 7
To Use Plow as Light Duty Dozer .....	7
Optional Wing Kit .....	8
Main Parts Identification .....	9
Maintenance Instructions .....	10
Parts List .....	11
Troubleshooting.....	12

## ***Congratulations on the purchase of your PREMIER Snow Plow Attachment.***

You have invested in a quality piece of equipment backed by people with years of experience. But only by proper installation, operation, and maintenance can you expect to receive the dependable performance and long life for which the snow plow was designed.

This operator's manual contains information regarding the installation, operation, safe use, and maintenance of your Premier Snow Plow Attachment. ***Please be sure all operators study this manual carefully and keep it on file for future reference.***

After reading this manual, if you have any questions about your Premier Snow Plow Attachment please contact us immediately as follows:

**Toll Free:** (866) 458-0008  
**Local:** (260) 456-8518  
**Fax:** (260) 456-6868  
**Web:** [www.premierauger.com](http://www.premierauger.com)  
**E-Mail:** [greg@premierauger.com](mailto:greg@premierauger.com)

Premier strives to provide superior products and the highest level of customer service. If you have any suggestions on how we can improve for the future, we would appreciate hearing from you.

*Thank you for putting your trust in PREMIER.*

## **PREMIER**

1631 East Pontiac Street  
Fort Wayne, IN 46803

## PREMIER WARRANTY REGISTRATION

Date of Purchase: \_\_\_\_\_

Model #: \_\_\_\_\_ Serial #: \_\_\_\_\_

### Owner Information:

Owner's Name \_\_\_\_\_ Phone \_\_\_\_\_

Company Name \_\_\_\_\_

Address \_\_\_\_\_

City \_\_\_\_\_ State \_\_\_\_\_

Zip Code \_\_\_\_\_ Country \_\_\_\_\_

### Dealer Information:

Dealer Salesman \_\_\_\_\_ Phone \_\_\_\_\_

Dealer Name \_\_\_\_\_

Address \_\_\_\_\_

City \_\_\_\_\_ State \_\_\_\_\_

Zip Code \_\_\_\_\_ Country \_\_\_\_\_

### Installation & Application Information:

This Premier Snow Plow will be mounted on: \_\_\_\_\_

This Premier Snow Plow Attachment has been accepted in good condition and I have been instructed by the dealer and/or read and understand the entire Operator's Manual for proper installation, proper and safe operation, preventative maintenance and service, warranty and all other information covered in the Operator's Manual. I also understand that all operators must read and understand the entire Operator's Manual.

Owners Signature \_\_\_\_\_

***This page must be returned within 10 days of purchase to validate warranty.***

**Return To:** Premier  
1631 East Pontiac Street  
Fort Wayne, IN 46803

# PREMIER SNOW PLOW WARRANTY POLICY

**Model #** \_\_\_\_\_ **Serial #** \_\_\_\_\_

Premier warrants its products to be free from defects in material or workmanship for a warranty period as stated below.

## **STRUCTURAL WARRANTY: 12 MONTHS**

The warranty period begins on the date of purchase by the original purchaser.

### **Warranty Performance**

To make a claim under this warranty, contact the dealer purchased from, who will then obtain written return authorization from Premier. All warranty returns must be accompanied by a Premier Return Authorization.

### **Remedy**

During the applicable warranty period Premier at its option will repair or replace, free of charge, any product determined by it to be defective. Such repair or replacement shall take place at a location designated by Premier.

### **Exclusions From Warranty Coverage**

1. This warranty automatically is void if any attempt is made to make field repairs to hydraulic motors. To qualify for warranty performance the complete unit must be available for Premier's inspection in its original "failed" condition.
2. There is no warranty against failures caused by or related to alterations or modifications made without the express written consent of Premier.
3. Under no circumstances shall Premier be responsible for the cost of labor for field replacement or repair, nor for damage caused by accident, misapplication, abuse, misuse, operator error, or environmental elements.
4. This warranty does not apply to parts subject to normal wear, nor to damage caused by failure to perform recommended maintenance or to replace worn parts.
5. Under no circumstances shall Premier be obligated for the cost of any repair or replacement by anyone other than Premier, without its express written consent.

### **Limitations And Exclusions**

This warranty is in lieu of all other warranties written or oral, express or implied, statutory or otherwise arising by operation of law, including any warranty of merchantability or fitness for purpose.

The liability of Premier arising out of the supplying of any product covered by this warranty contract, negligence or otherwise shall not in any case exceed the cost of parts or labor required to rebuild or replace such defective product, together with the transportation costs attributable thereto. Upon the expiration of the applicable warranty period herein specified, all such liability shall terminate.

This warranty constitutes the entire warranty of Premier, and no oral representations, warranties or guarantees by any agent of Premier, or the seller shall be binding on Premier, and no part of this warranty may be modified or extended except upon the express written consent of Premier.

### **Improvements**

Premier continually strives to improve our products. Premier reserves the right to make changes or additions to any product without incurring any obligation whatsoever to make such changes or additions to products previously sold.

# TO THE OPERATOR

*Your personal safety is a concern of ours. It should also be of concern to you. It is the responsibility of all operators to read and understand this entire manual before installing, operating or servicing this equipment. Pay particular attention to cautions, warnings and safe operating procedures. Be a safe and qualified operator. Operate your equipment with care and good judgment and see to it that it is properly maintained.*

## SAFETY ALERT SYMBOL

*This Safety Alert Symbol Means...*

**ATTENTION! BECOME ALERT!**

**YOUR SAFETY IS INVOLVED!**



***When you see it pay attention and follow the instructions in the safety message.***

## SAFETY INFORMATION

THE USE OF THIS EQUIPMENT IS SUBJECT TO CERTAIN HAZARDS WHICH CANNOT BE PROTECTED AGAINST MECHANICAL MEANS OR PRODUCT DESIGN. ALL OPERATORS OF THIS EQUIPMENT MUST READ AND UNDERSTAND THIS ENTIRE MANUAL, PAYING PARTICULAR ATTENTION TO SAFETY AND OPERATING INSTRUCTIONS, PRIOR TO USING THE PREMIER SNOW PLOW. IF THERE IS SOMETHING IN THIS MANUAL YOU DO NOT UNDERSTAND, ASK YOUR SUPERVISOR TO EXPLAIN IT TO YOU. FAILURE TO OBSERVE THESE SAFETY PRECAUTIONS CAN RESULT IN DEATH OR SERIOUS INJURY OR SERIOUS EQUIPMENT DAMAGE.



All bystanders should be kept a minimum of 10 feet away from working area.



Always wear an OSHA approved hard hat and safety eye protection when operating or servicing this equipment. Do not wear loose fitting clothing, flopping cuffs, dangling neckties and scarves, or rings and wrist watches that can catch moving parts.



An operator must not use drugs or alcohol, which can alter his alertness or coordination. An operator taking prescription or over the counter drugs should seek medical advice on whether or not he can safely operate equipment.



Never alter or remove any safety decals or safety shields. Check this manual for location of these items and replace immediately if damaged or illegible.



Never adjust a relief valve for pressure higher than recommended by vehicle manufacturer.



Whenever changing or installing this or other attachments, make sure all connections are securely fastened.

*(continued)*

# SAFETY INFORMATION



Travel with the snow plow in a lowered position at all times to prevent uncontrolled movement. Drive slowly over rough ground and on slopes.



Before exiting the vehicle, lower the snow plow to the ground, turn off vehicle engine and lock vehicle breaks.



Never check a pressurized system for leaks with your bare hand. Oil escaping from pin-hole leaks under pressure can penetrate skin and could cause serious infection. Hold a piece of cardboard up next to suspected leaks and wear a face shield or safety eye protection. If any fluid is injected into the skin, it must be removed immediately by a doctor familiar with this type of injury.



Before disconnecting hydraulic lines or fittings be sure to relieve all pressure by cycling all hydraulic controls after shutdown. Remember hydraulic systems are under pressure whenever the engine is running and may hold pressure after shutdown. Before applying pressure to the system make sure all connections are tight and that there is no damage to lines, fittings, and hoses.



Flow and pressure gauges, fitting, and hoses must have a continuous operating pressure rating of at least 25% higher than highest pressures of the system.



Check all controls and operating functions of the machine in a safe area before starting to work.



Avoid steep hillside operation, which could cause the vehicle to overturn. Consult your vehicle operator's and safety manuals for the maximum incline allowable.



Before operation, always visually check for worn, damaged or cracked parts before starting use. Replace these with genuine Premier Parts.



Never perform any work on a snow plow unless you are authorized and qualified to do so. Always read the operator service manual before any repair is made. After completing maintenance or repair, check for correct functioning of the snow plow. If not functioning properly always tag "DO NOT OPERATE" until all problems are corrected.



Do not service or otherwise handle a plow in the raised position unless it is securely blocked against unexpected falling.



This manual covers the safe use, installation, operation, and service instructions for the snow plow only. Always read the operating and safety manuals prepared for your vehicle and any other attachments before using them.

# OPERATING PROCEDURES

## ATTACHING THE SNOW PLOW

**NOTE:** BECAUSE OF THE DIFFERENCES IN ATTACHMENT MOUNTING METHODS AMONG THE VARIOUS BRANDS OF SKID STEER LOADERS, IT IS IMPORTANT TO CONSULT YOUR SKID STEER OWNERS MANUAL FOR THE PROPER ATTACHMENT MOUNTING METHOD.

1. Insert loader attachment plate into Snow Plow Mounting Bracket by driving the loader into the mount frame.
2. Set the brakes and relieve hydraulic pressure before exiting the cab.
3. Secure all locking levers or pins in their proper position.
4. Connect two hydraulic hoses from the Snow Plow to the loader's auxiliary hydraulic system.
5. Fully angle the Snow Plow Blade 6 times to purge any air in lines.
6. Test the lifting and angling functions in a safe and level area before using the plow.
7. You are now ready to operate your Premier Snow Plow.

## REMOVING THE SNOW PLOW

**NOTE:** BECAUSE OF THE DIFFERENCES IN ATTACHMENT MOUNTING AND REMOVAL METHODS AMONG THE VARIOUS BRANDS OF SKID STEERS, IT IS IMPORTANT TO CONSULT YOUR SKID STEER OWNERS MANUAL FOR THE PROPER ATTACHMENT REMOVAL METHOD.

1. Park the plow on a solid level surface with the blade straight across the loader.
2. Roll the loader's tilt arms back and lower lift arms to lay attachment level and set the brakes on the loader.
3. Stop the engine, release hydraulic pressure in hoses and disconnect auxiliary hoses.
4. Release locking levers or pins.
5. Start the engine and disengage loader mounting plate for snow plow mounting bracket. Slowly drive the loader back away from the plow.

## TRANSPORTING THE PLOW

Raise the blade to a position where it does not block your view forward. Transport the plow with hydraulic flow off or in neutral to prevent accidental lowering of the plow.



**WARNING:** Never adjust the blade position while driving.



## PLOWING SNOW



**WARNING:** Always wear the seat belt and lower the seat bar, if equipped, when plowing snow. Sudden contact with a hidden object can result in serious personal injury. Inspect areas to be plowed before snowfall for potential hazards, and mark obstructions with stakes that will be seen when snow covers the ground. Identify any emergency equipment and utility outlets that may need to be cleared in the event of a storm.

Adjust the Skid Shoes at the back of the moldboard according to the surface to be plowed. To adjust height, add or remove shims as needed. The bottom of the skids should be about 1/2" below the cutting edge when plowing gravel roads or lots. Skid shoes should be even with the cutting edge on hard surfaces such as asphalt or concrete.

The snow plow mainframe should be level with the ground during operation. Use the bucket function control to level and engage loader lift arms in float mode. This allows the plow to follow the contour of the ground and clean up low areas while plowing snow.

Always plow snow as it accumulates.

**NOTE:** Wet snow weighs about 12 lbs. per cubic foot, therefore the weight of snow being pushed by your plow can increase to several tons.

**WARNING:** Allowing the depth of snow to over-accumulate increases removal problems and can be costly in terms of equipment wear.



**WARNING:** *Do not exceed 10 mph while plowing.* Serious personal injury can result from plowing at excessive speeds, as well as costly damage to equipment and property, if an obstruction is encountered while plowing.



Clear large lots by angling the blade and creating a single path. Push snow to outer edges of the lot by taking successive passes with the blade angled.

When plowing very deep snow, it may be necessary to raise the blade and shear off layers of snow until a working area is cleared. Work small areas in multiple passes to push snow to outer edges.

## TO USE PLOW AS LIGHT DUTY DOZER

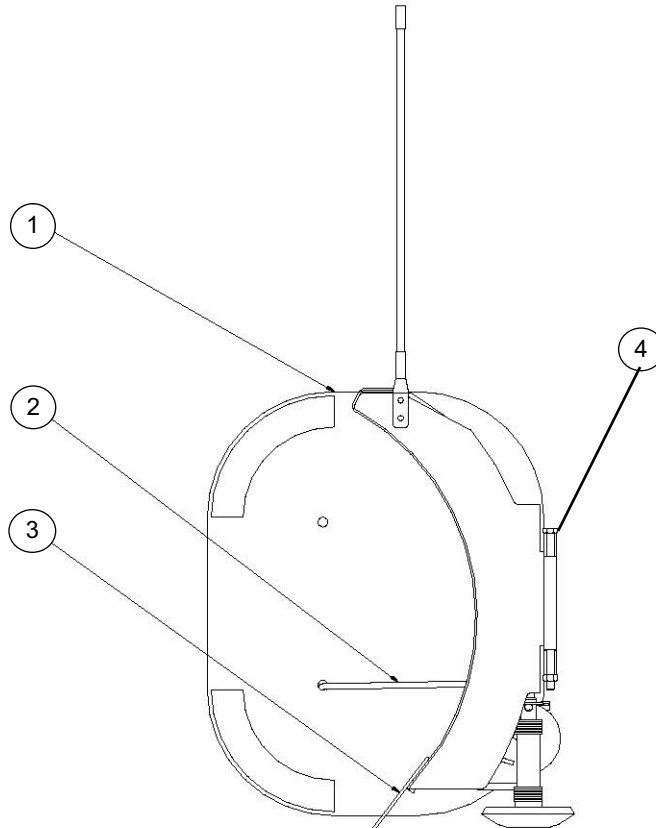
Your Premier Snow Plow is equipped with a Moldboard Trip Lock-Out feature which enables the plow to function as a Light Duty Dozer. Insert 1/2" x 1-1/2" bolt to the Lock-Out bolt holes.

# OPTIONAL WING KIT

## USING PLOW WITH OPTIONAL WING KIT

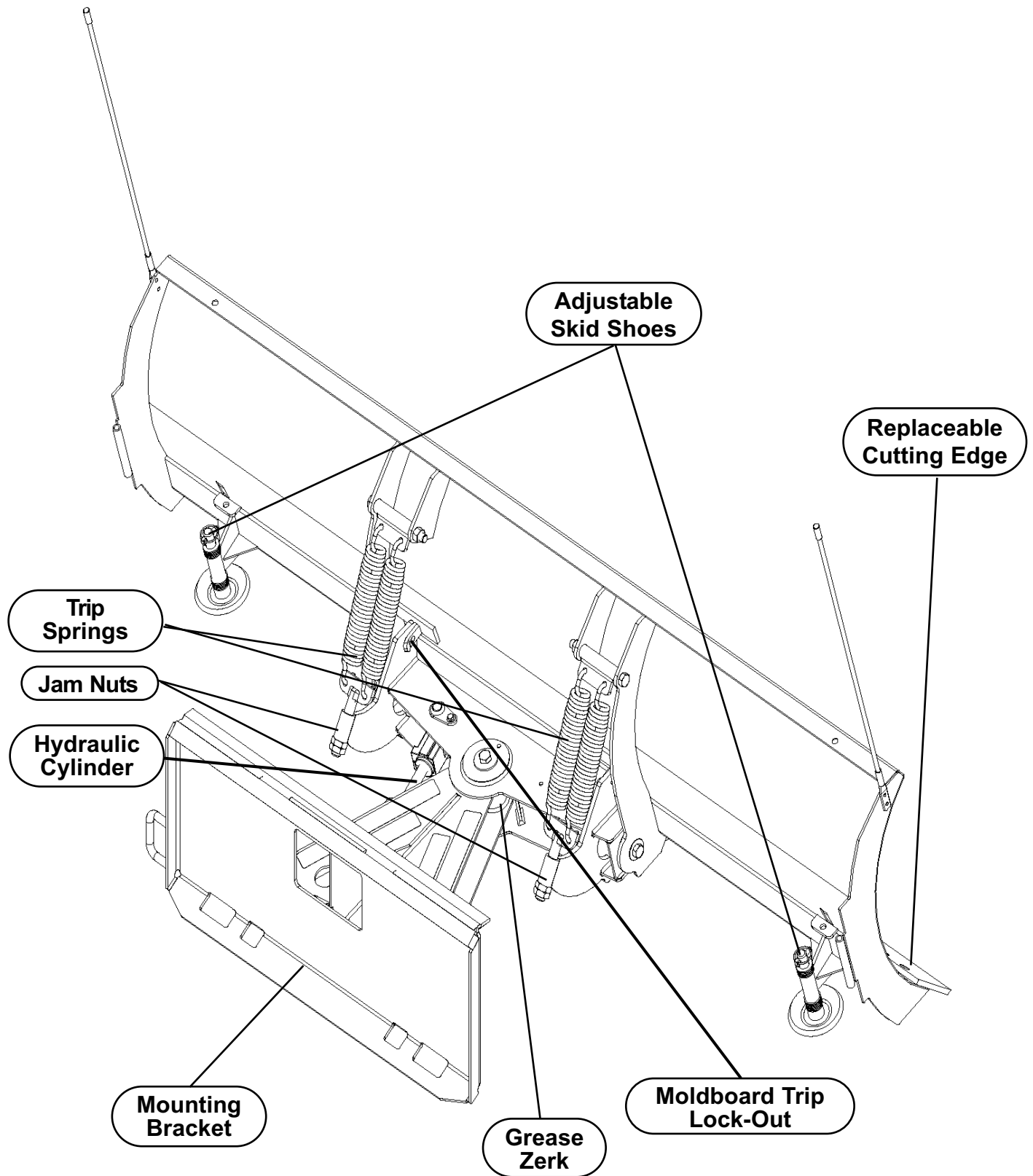
The Optional Wing Kit is designed to increase productivity.

**To Assemble:** Line up the tubes of each Wing with the tubes on each side of the plow. Insert the Wing Retaining Rod into the Wing. Insert the opposite end of the Rod through the Blade and drop into the Wing Retaining Rod hole.



REF. #	PART #	DESCRIPTION	QTY. REQ.
1.....	92011	.....SNOW PLOW WING .....	2
2.....	22029	.....WING RETAINER ROD .....	2
3.....	41013	.....1/8" R PIN.....	2
4.....	41007	.....WING MOUNT PIN.....	2

# MAIN PARTS IDENTIFICATION



# MAINTENANCE



**WARNING:** Do not service or otherwise handle a plow in the raised position unless it is securely blocked against unexpected failing.

Dependable snowplow operation is the result of following good maintenance procedures. Inspect your plow frequently to ensure that all parts are working smoothly, and develop a schedule for maintenance at required intervals.

## GENERAL

Wash salt and dirt off the plow before storage. Apply a light coating of grease to extended cylinder rods to prevent corrosion.

Grease the Zerk every 10 hours of plow use.

Replace all worn bolts and lock nuts. Check all hardware periodically during operation and keep tightened. **IMPORTANT:** Loose bolts can cause hole elongation and part failure resulting in dangerous operating conditions and equipment breakdown.

Inspect wear of the cutting edge before every plowing season and frequently throughout the season. Replace the cutting edge before wear reaches the main plow blade.

**IMPORTANT:** Excessive wear can cause serious damage to the plows mainframe.

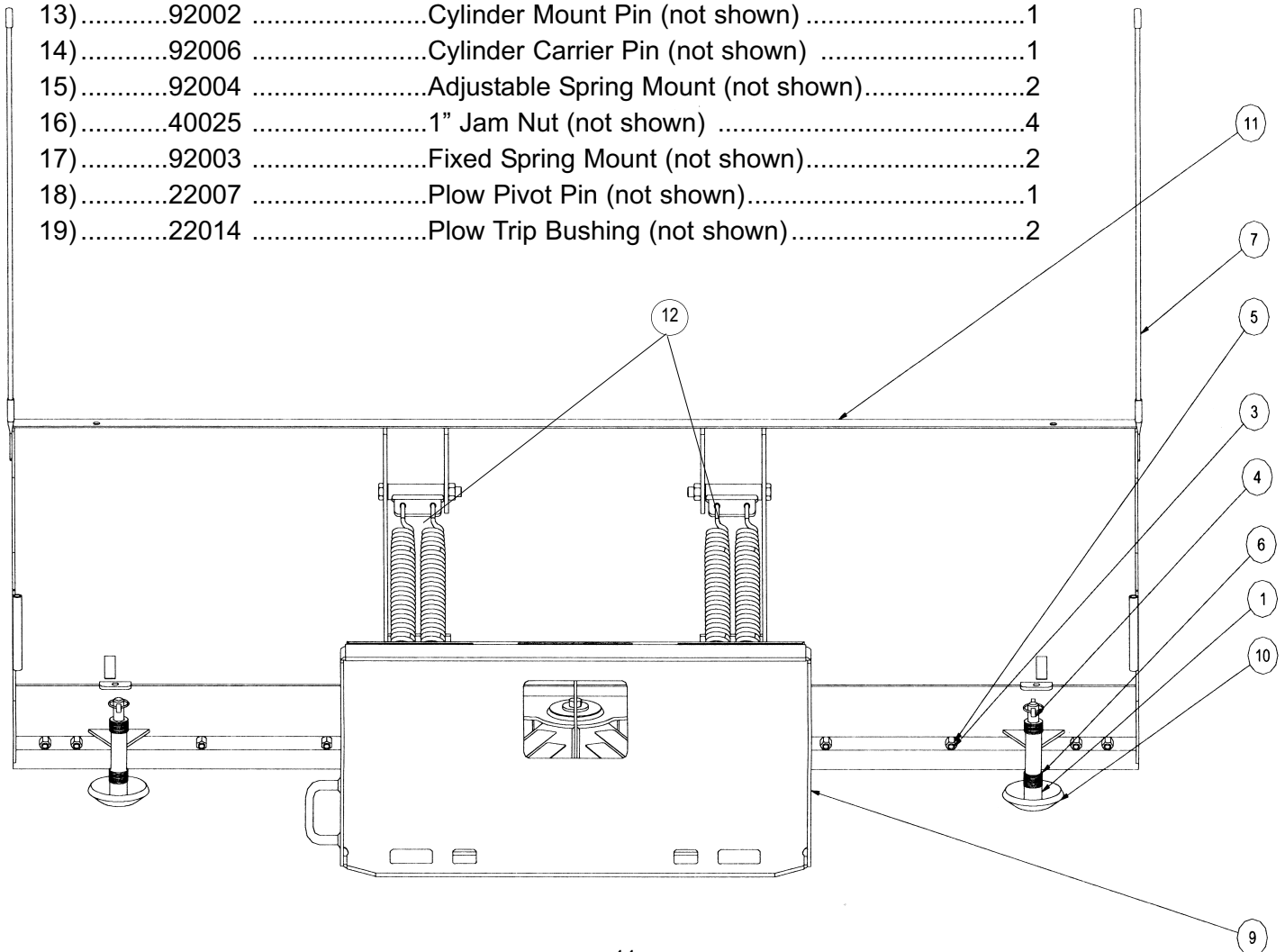
Inspect Spring Tension for wear. Spring tension should be firm.

**IMPORTANT:** Do not over tighten compression springs.

Inspect hydraulic cylinder for signs of leaks. If a leak exists, repair or replace.

# PARTS LIST

REF. #	PART #	DESCRIPTION	QTY. REQ.
1)	22022	Skid Shoe Spacer	2
2)	22034	72" Hardened Cutting Edge (not shown)	1
	22030	84" Hardened Cutting Edge (not shown)	1
	22042	96" Hardened Cutting Edge (not shown)	1
	22048	108" Hardened Cutting Edge (not shown)	1
3)	41008	5/8"-11 Plow Bolt, 1-1/4" Long	Varies
4)	41009	7/16" Lynch Pin	2
5)	40001	5/8" Crown Lock Nut	Varies
6)	40026	Skid Shoe Shims	36
7)	41012	Snow Plow End Marker	2
8)	60100	Hydraulic Cylinder (not shown)	1
9)	92001	Mount Weldment	1
10)	92009	Steel Skid Shoe	2
11)	92013	72" Moldboard Weldment	1
	92010	84" Moldboard Weldment	1
	92015	96" Moldboard Weldment	1
	92020	108" Moldboard Weldment	1
12)	22016	Trip Springs	4
13)	92002	Cylinder Mount Pin (not shown)	1
14)	92006	Cylinder Carrier Pin (not shown)	1
15)	92004	Adjustable Spring Mount (not shown)	2
16)	40025	1" Jam Nut (not shown)	4
17)	92003	Fixed Spring Mount (not shown)	2
18)	22007	Plow Pivot Pin (not shown)	1
19)	22014	Plow Trip Bushing (not shown)	2



# TROUBLESHOOTING

Problem	Possible Cause	Solution
Hydraulic cylinder does not function or functions slowly when hydraulics are activated.	<p>Cold hydraulic oil</p> <p>Oil level low.</p> <p>Hydraulic connection leak.</p>	<p>Allow machine time for oil temperature to warm.</p> <p>Add oil (do not overfill).</p> <p>Tighten or reconnect hoses.</p>
Plow angles opposite expected direction.	Hoses reversed.	Re-install hoses correctly.
Plow leaves snow behind with blade fully angled during use.	Frame of blade is not level with ground.	Use the bucket curl function to level blade frame to ground to insure proper ground contact.
Plow does not clean-up snow from low areas.	Loader arms not engaged in float mode.	Engage loader arms in float mode.