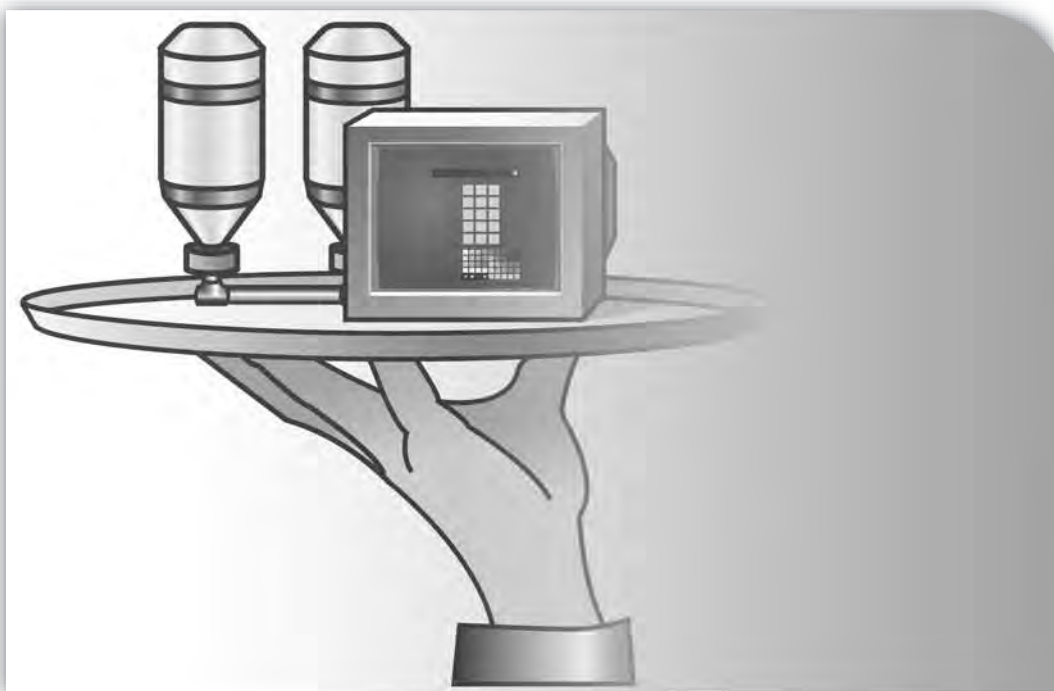


LISTEN.
THINK.
SOLVE.SM

RSView[®]32



ACTIVE DISPLAY SYSTEM GETTING RESULTS GUIDE

PUBLICATION VW32AD-GR001E-EN-E-July 2011

Supersedes Publication VW32AD-GR001D-EN-E

ALLEN-BRADLEY • ROCKWELL SOFTWARE

**Rockwell
Automation**

Contact Rockwell	<p>Customer Support Telephone — 1.440.646.3434</p> <p>Online Support — http://support.rockwellautomation.com</p>
Copyright Notice	<p>© 2011 Rockwell Automation Technologies, Inc. All rights reserved. Printed in USA.</p> <p>This document and any accompanying Rockwell Software products are copyrighted by Rockwell Automation Technologies, Inc. Any reproduction and/or distribution without prior written consent from Rockwell Automation Technologies, Inc. is strictly prohibited. Please refer to the license agreement for details.</p>
Trademark Notices	<p>Allen-Bradley, ControlLogix, FactoryTalk, Rockwell Automation, Rockwell Software, RSLinx, RSView and the Rockwell Software logo are registered trademarks of Rockwell Automation, Inc.</p> <p>The following logos and products are trademarks of Rockwell Automation, Inc.:</p> <p>AdvanceDDE, ControlView, Data Highway Plus, DH+, RSView32, RSView32 Resource Kit, and WINTelligent.</p> <p>FactoryTalk Activation, FactoryTalk Live Data, and FactoryTalk Transaction Manager.</p> <p>RSLinx Classic, SLC 5, SLC 500, and SoftLogix.</p>
Other Trademarks	<p>ActiveX, Microsoft, Microsoft Access, SQL Server, Visual Basic, Visual C++, Visual SourceSafe, Windows, Windows ME, Windows NT, Windows 2000, Windows Server 2003, Windows XP, and Windows Vista are either registered trademarks or trademarks of Microsoft Corporation in the United States and/or other countries.</p> <p>Adobe, Acrobat, and Reader are either registered trademarks or trademarks of Adobe Systems Incorporated in the United States and/or other countries.</p> <p>ControlNet is a registered trademark of ControlNet International.</p> <p>DeviceNet is a trademark of the Open DeviceNet Vendor Association, Inc. (ODVA).</p> <p>Ethernet is a registered trademark of Digital Equipment Corporation, Intel, and Xerox Corporation.</p> <p>OLE for Process Control (OPC) is a registered trademark of the OPC Foundation.</p> <p>Oracle, SQL*Net, and SQL*Plus are registered trademarks of Oracle Corporation.</p> <p>All other trademarks are the property of their respective holders and are hereby acknowledged.</p>
Warranty	<p>This product is warranted in accordance with the product license. The product's performance may be affected by system configuration, the application being performed, operator control, maintenance, and other related factors. Rockwell Automation is not responsible for these intervening factors. The instructions in this document do not cover all the details or variations in the equipment, procedure, or process described, nor do they provide directions for meeting every possible contingency during installation, operation, or maintenance. This product's implementation may vary among users.</p> <p>This document is current as of the time of release of the product; however, the accompanying software may have changed since the release. Rockwell Automation, Inc. reserves the right to change any information contained in this document or the software at anytime without prior notice. It is your responsibility to obtain the most current information available from Rockwell when installing or using this product.</p>

Contents

Getting started.....	1
Quick start steps	1
Step 1 ■ Plan your implementation.....	2
Step 2 ■ Determine system requirements	2
Step 3 ■ Install supporting software	3
Step 4 ■ Set up the server	6
Step 5 ■ Set up the station.....	6
Step 6 ■ Set up the browser	6

Chapter 1

Setting up the server	7
Determining system requirements.....	7
Step 1 ■ Total your points	7
Step 2 ■ Determine the recommended system configuration	8
Determining which software components to install	9
Microsoft Internet Information Server	9
Windows network connections	11
Windows 2000 network connections.....	11
Windows Vista/ Windows 7 network connections.....	11
Windows Server 2008 network connections.	12
In the Windows Control Panel, select Network and Sharing Center. In the left pane, select Manage network connections. From the File menu, select Set up a connection or network and then work through the remaining steps in the wizard.	12
Installing the RSView32 Active Display Server	12
Activation keys	13
FactoryTalk® Activation Grace Period	14
Increasing the number of clients you can connect to the server.....	14

Starting and stopping the server	16
If you don't want to use the browser	16
If you do want to use the browser	17
Stopping the server.....	20
Starting and stopping the server automatically	21

Chapter 2

Setting up the station	23
About the RSView32 Active Display Station	23
Determining system requirements	23
Step 1 ■ Total your points	24
Step 2 ■ Determine the recommended system configuration	25
Installing the RSView32 Active Display Station	25
Installing the client software from CD-ROM.....	26
Installing the client software from a network	27
Activation keys	27
FactoryTalk® Activation Grace Period	28
Configuring stations	28
Editing station configurations.....	29
Using clients with a dial-up connection	31
Configuring Windows Server 2003 or Windows XP for dial-up networking	31
Configuring Windows 2000 for dial-up networking	33
Configuring Windows Vista Business for dial-up networking	34
Starting the RSView32 Active Display Station	36
Bypassing proxy server connections.....	36
Starting a station using a direct network or dial-up connection.....	37
Bypassing the station login dialog box	38
Starting the station automatically when Windows starts	39

Chapter 3

Setting up the browser	41
Determining system requirements	41

Installing the RSView32 Active Display Browser.....	42
Connecting to an RSView32 Active Display Server.....	42
Connecting to a server using a direct Internet connection	42
Connecting to an Active Display Server using a dial-up connection.....	43

Chapter 4

Using the Active Display System	45
Integrating your RSView32 project with the Active Display System.....	45
Activity bar support.....	45
Activity logging	46
Alarms.....	46
File locations.....	46
Key definitions	47
Security	47
Startup and shutdown macros	49
Trends.....	49
RSView32 VBA code	50
Runtime features not supported in the Active Display System.....	50
Configuring your RSView32 project for browser navigation	60
Modifying the Display and Abort commands.....	60
Integrating the browser with other web sites	60
Adding parameters to the Display command.....	62
Making your RSView32 project work with a browser	63
Avoiding navigation among graphic displays on different servers.....	63
Maintaining the connection to the server	64
Deploying ActiveX components automatically	64
Differences between the station and the browser.....	65

Chapter 5

Commands.....	67
---------------	----

Chapter 6

Getting the information you need.....	71
Using Help	71
Viewing the Help contents.....	72
Using the index	73
Finding words or topics.....	74
Technical support	75
When you call.....	75
Index	77

Getting started

The RSView32™ Active Display System is an optional client/server extension to RSView32. It enables you to load, run, and interact remotely with RSView32 graphic displays, from almost any computer on a network.

The RSView32 Active Display System consists of the *RSView32 Active Display Server*, that runs on the computer on which RSView32 is installed, and one or more clients that run remotely on machines connected to the server. There are two kinds of client:

- the RSView32 Active Display Station, a complete runtime operation environment that can run on a remote client computer
- the RSView32 Active Display Browser, a “rich” web client implementation, for integrating fully interactive, real-time RSView32 graphic displays into the Microsoft® Internet Explorer web browser. The Active Display Browser allows you to link your RSView32 graphic displays to other web pages, providing a common, browser-style method of navigation to multiple information systems in a single web browser (for example, an intranet application).

Quick start steps

The following steps explain how to get up and running with the RSView32 Active Display System. To work with the RSView32 Active Display System, you will need at least one server, and one client. Complete steps 1 and 2 in order. The other steps can be completed in any order.

Step 1 ■ Plan your implementation

To help ensure that your RSVIEW32 project works effectively in the client/server environment of the Active Display System, there are some things to plan. To help you plan, more detail about the following topics is provided in Chapter 4, *Using the Active Display System*.

Integrating your RSVIEW32 application with the Active Display System

Parts of RSVIEW32 appear or react differently when viewed from a client than at the server or when RSVIEW32 is used as a standalone product. To integrate your RSVIEW32 project with the Active Display System, configure your project with these differences in mind. For more information, see page 45.

Configuring your RSVIEW32 project for browser navigation

Because web browsers use URLs, and a ‘previous page-next page’ method of navigation, your RSVIEW32 project needs to be modified to work with the Active Display Browser. For more information, see page 60.

Deploying ActiveX components automatically

If your RSVIEW32 project uses ActiveX controls, they must be located in a specific place on the server computer, and must be wrapped in CAB files for clients to be able to use them. For more information, see page 64.

Step 2 ■ Determine system requirements

The RSVIEW32 Active Display System consists of a server, and two kinds of clients. Because the server and the clients can perform different functions, they have different system requirements.

For details about determining the system requirements for the server, see page 7.

For details about determining the system requirements for the station and the browser, see page 23.

Step 3 ■ Install supporting software

For the RSView32 Active Display System to run, you may need to install and configure some software components that provide services to the Windows® operating system you are using. To perform its tasks at runtime, the Active Display System “piggy-backs” on these services.

If you are using this operating system	And you want to install the	You will need to install
Windows Server 2003	Active Display Server	<ul style="list-style-type: none">■ Internet Information Server version 6.0■ Internet Explorer* version 6.0 or later
	Active Display Station	<ul style="list-style-type: none">■ Dial-Up Connections (optional)■ Internet Explorer* version 6.0 or later
	Active Display Browser	<ul style="list-style-type: none">■ Internet Explorer version 6.0 or later■ Dial-Up Connections (optional)
Windows XP	Active Display Server	<ul style="list-style-type: none">■ Internet Information Server version 5.0■ Internet Explorer* version 5.0 or later
	Active Display Station	<ul style="list-style-type: none">■ Dial-Up Connections (optional)■ Internet Explorer* version 5.0 or later

If you are using this operating system	And you want to install the	You will need to install
Windows XP	Active Display Browser	<ul style="list-style-type: none"> ■ Internet Explorer version 5.0 or later ■ Dial-Up Connections (optional)
Windows 2000	Active Display Server	<ul style="list-style-type: none"> ■ Internet Information Server version 5.0 ■ Internet Explorer* version 5.0 or later
	Active Display Station	<ul style="list-style-type: none"> ■ Dial-Up Connections (optional) ■ Internet Explorer* version 5.0 or later
	Active Display Browser	<ul style="list-style-type: none"> ■ Internet Explorer version 5.0 or later ■ Dial-Up Connections (optional)
Windows Vista (32-Bit)	Active Display Server	<ul style="list-style-type: none"> ■ Internet Information Server version 7.0 ■ Internet Explorer* version 7.0 and 8.0
	Active Display Station	<ul style="list-style-type: none"> ■ Dial-Up Connections (optional) ■ Internet Explorer* version 7.0 and 8.0
	Active Display Browser	<ul style="list-style-type: none"> ■ Internet Explorer version 7.0 and 8.0 ■ Dial-Up Connections (optional)
Windows 7 Professional (32-Bit)	Active Display Server	<ul style="list-style-type: none"> ■ Internet Information Server version 7.5 ■ Internet Explorer* version 8.0
	Active Display Station	<ul style="list-style-type: none"> ■ Dial-Up Connections (optional) ■ Internet Explorer* version 8.0
	Active Display Browser	<ul style="list-style-type: none"> ■ Internet Explorer version 8.0 ■ Dial-Up Connections (optional)

If you are using this operating system	And you want to install the	You will need to install
Windows Server 2008 (32-Bit)	Active Display Server	<ul style="list-style-type: none"> ■ Internet Information Server version 7.0 ■ Internet Explorer* version 8.0
	Active Display Station	<ul style="list-style-type: none"> ■ Dial-Up Connections (optional) ■ Internet Explorer* version 8.0
	Active Display Browser	<ul style="list-style-type: none"> ■ Internet Explorer version 8.0 ■ Dial-Up Connections (optional)
<p>* Some components installed with Internet Explorer are required for the Active Display System to work. That is why Internet Explorer must be installed, even if it is not being used.</p>		

For details, see the chapter for the Active Display System software you are installing.

Step 4 ■ Set up the server

For details about setting up and starting or stopping the server, see Chapter 1.

Step 5 ■ Set up the station

For details about setting up and using the Active Display Station, see Chapter 2.

Step 6 ■ Set up the browser

For details about setting up and using the Active Display Browser, see Chapter 3.

Setting up the server

Determining system requirements

The hardware and software you use with the Active Display Server depends on the demands your project places on the system. The greater the demand, the more powerful a system you need.

The recommendations below are based on field experience. It is possible that your application will operate on a platform below these recommendations.

In the following tables, the demands your project places on the system are represented by points. Total your points in step 1, and then use the table in step 2 to determine the hardware and software you need.

Step 1 ■ Total your points

For	If you are	Add points
RSView32™ project	running displays, or editing your project on the RSView32 Active Display Server computer	1
	using more than 30,000 tags	2
	using more than 5,000 tags	1
	changing displays, on average, more than five times per minute on the RSView32 Active Display Server computer	1
Alarms	displaying alarm summaries with more than 500 outstanding transactions (the number of lines in an unfiltered alarm summary)	2
	displaying more than 100 outstanding alarm transactions	1

For	If you are	Add points
Commands	using startup or shutdown macros in displays	1
	using macros containing more than 10 commands in displays on the client	2
Simultaneously active clients	using typically more than 10 active clients*	10
	using typically more than five active clients*	2
	using typically more than two active clients*	1
Total your points here		
* Any client type counts, including view-only clients and the Active Display Browser.		

Step 2 ■ Determine the recommended system configuration

For this number of points	You need this hardware	You need this software
10 or more	Pentium® II 400 MHz 256 MB RAM 100 Megabit Ethernet® Network Data Switch (not a network hub)	<ul style="list-style-type: none"> Windows® Server 2003* or Windows XP Professional** or Windows 2000 Server*** or Windows Vista**** or Windows 7 Professional or Windows Server 2008***** Internet Information Server (IIS)
7 to 9	Pentium II 400 MHz 128 MB RAM 100 Megabit Ethernet	<ul style="list-style-type: none"> Windows Server 2003 * or Windows XP Professional** or Windows 2000 Server*** or Windows Vista**** or Windows 7 Professional or Windows Server 2008***** Internet Information Server (IIS)
5 to 6	Pentium II 300 MHz 128 MB RAM 10 Megabit Ethernet	<ul style="list-style-type: none"> Windows XP Professional** or Windows 2000 Professional*** or Internet Information Server 5.0
2 to 4	Pentium MMX 200 MHz 64 MB RAM 10 Megabit Ethernet	<ul style="list-style-type: none"> Windows 2000 Professional*** or Internet Information Server 5.0 (for Windows 2000)

For this number of points	You need this hardware	You need this software
0 to 1	Pentium 133 MHz 32 MB RAM 10 Megabit Ethernet	<ul style="list-style-type: none"> ■ Windows 2000 Professional*** or ■ Internet Information Server 5.0 (for Windows 2000)

Important: The hardware should meet or exceed the minimum hardware requirements of the operating system you will run.

* With Service Pack 1 or later.
 ** With Service Pack 1 or later.
 *** With Service Pack 3 or later.
 **** With Service Pack 1 or later.
 ***** With Service Pack 2.

Determining which software components to install

For the RSView32 Active Display Server to run, in addition to installing the Active Display server software, you may need to install and configure some software components that provide services to the Windows operating system. To perform its tasks at runtime, the Active Display Server “piggy-backs” on these services.

The following sections provide information about installing and configuring these components. You may not need to install and configure all of the following components.

IMPORTANT

The order in which you install components is important. Follow the instructions in the order in which they appear. The Windows service pack must be installed after all other components have been installed.

Microsoft Internet Information Server

The Microsoft® Internet Information Server is a set of services that allows the Windows Server 2003, Windows XP, Windows 2000 or Windows Vista Business computer to run as an Internet server. The

Active Display Server needs these services to communicate with Active Display Stations and Active Display Browsers.

Where to obtain the software

Internet services for Windows Server 2003, Windows XP, Windows 2000 and Windows Vista Business are available on the operating system CD.

If you want to use the Active Display Browser, you must install version 5.0 or later of Internet Information Server on the server..

How to check what version is installed

To identify the version of Internet Information Server you have installed on the Active Display Server computer:

1. Start Internet Explorer.
2. Type the following URL and then press Enter:

`http://server_computer_name`

where *server_computer_name* is the name of the computer on which the Active Display Server is installed. Internet Explorer displays version information for Internet Information Server installed on the server computer.

What you need to install

The Microsoft Internet Information Server consists of several components, which you may or may not need for other programs you are running. At a minimum, you must install the following two components, for the Active Display Server to run:

- Internet Service Manager
- World Wide Web Service

Windows network connections

If the Active Display Server is running on Windows Server 2003, Windows XP, Windows 2000, or Windows Vista Business, and you want Active Display Stations or Active Display Browsers to be able to dial up to the Active Display Server using a phone line, you must set up network connections on the computer on which the Active Display Server is installed.

Windows Server 2003 /XP network connections .

In the Windows Control Panel, select **Network Connections**, and then start the New Connections wizard. Select **Set up an advanced connection** and **Accept incoming connections**, then work through the remaining steps in the wizard.

Windows 2000 network connections.

In the Windows Control Panel, select **Network and Dial-up Connections**, and then start the Network Connections wizard. Select **Accept incoming calls**, and then work through the remaining steps in the wizard.

Windows Vista/ Windows 7 network connections.

In the Windows Control Panel, select **Network and Sharing Center**. In the left pane, select **Manage connections**. From the File menu, select **New incoming connection** and then work through the remaining steps in the wizard.

Windows Server 2008 network connections.

In the Windows Control Panel, select **Network and Sharing Center**. In the left pane, select **Manage network connections**. From the File menu, select **Set up a connection or network** and then work through the remaining steps in the wizard.

Installing the RSVIEW32 Active Display Server

The steps below explain how to install the Active Display Server from the CD-ROM to your computer.

Important: RSVIEW32 Works or RSVIEW32 Runtime must be installed, and the computer must be restarted, before the Active Display Server can be installed.

To install the RSVIEW32 Active Display Server

1. Close all open Windows programs.
2. Place the RSVIEW32 Active Display System CD-ROM into your CD-ROM drive. The CD should start running automatically.

If the CD does not start automatically, run D:\SETUP.EXE, where D is the drive containing the CD.

3. Choose to install the RSVIEW32 Active Display Server.
4. Follow the on-screen instructions.
5. During installation, you will be prompted to activate the RSVIEW32 Active Display Server. Insert the Master disk in the disk drive, and then click Activate. For details about activation, see the activation utilities Help file, COPYPROT.CHM.

During installation, only one activation key of each type is moved to the server. To connect more than one client to the Active Display Server, you must install additional activation keys for each client. These client keys are either installed on the Active Display Server or on the Active

Display Client. For more information, see “Activation keys” on page 13 and “‘Dedicated’ client licenses” on page 16.

Activation keys

The following table lists the activation keys for the RSView32 Active Display System. The terms ‘floating’ and ‘dedicated’ are defined on the following pages

This key	is installed on the	and is for use with
RSVRADS.CLI	RSView32 Active Display Server	‘floating’ read-write clients. This key is used by any read-write client that connects to an RSView32 Active Display Server. One install of this key is required for each client that is connected.
RSVRADS.ROC	RSView32 Active Display Server	‘floating’ view-only clients. This key is used by any view-only client that connects to an RSView32 Active Display Server. One install of this key is required for each client that is connected.
RSVRADS.GCS	RSView32 Active Display Client	‘dedicated’ clients. This key allows a client access to any RSView32 Active Display Server, (even if the server does not have ‘floating’ client license keys available) provided the maximum of 20 connections has not been exceeded.
RSVRADS.SVR	RSView32 Active Display Server	the server. This key is required for the server to run.

Important: EvRSI activation is replaced by FactoryTalk® Activation in this release. If you are using EvRSI activation, please contact your local Rockwell Automation Sales office or Technical Support for information on migrating your activations to FactoryTalk® Activation.

For Rockwell Automation Technical Support in the U.S. call (440)646-3434.

Outside the U.S. see <http://www.rockwellautomation.com/locations/>

FactoryTalk® Activation Grace Period

FactoryTalk® Activation provides customers with access to critical software components for a grace period of 7 days regardless of availability of valid activations. When a product is successfully activated, all grace period records will be cleared and the product will proceed with valid activations.

RSView32 Active Display Server

- During the grace period, FactoryTalk® Activation will display a warning message box to the user and log a diagnostic warning message to FactoryTalk® Diagnostics every four hours if no valid activation key detected.
- When the grace period expires, Active Display Server will continue to run as in the grace period until it is restarted; however, after Active Display Server is restarted, the DisplayServerOn command will not work.

Increasing the number of clients you can connect to the server

By default, when you activate the RSView32 Active Display Server, you receive one server activation.

If you see the following error message when you attempt to connect clients to the Active Display Server, you need to increase the number of client activations on the server. For example, if you move three client 'floating' activations to the server's hard disk, a maximum of three floating clients will be able to use the Active Display Server at any one time.



For information about how to add, remove, or update activation keys, see the activation utilities Help file, COPYPROT.CHM.

Simultaneous client connections

Up to 20 licensed clients can connect to a server at one time.

‘Floating’ client licenses

Floating client licenses are installed on the server and “float” to whichever client needs them. This means that the license is granted for the exclusive use of any client while that client is connected. When the client disconnects, the license becomes available for other client connections.

There are two types of floating licenses: read-write licenses and view-only licenses. Read-write licenses allow full read-write privileges. View-only licenses allow read-only privileges.

If a client is configured as read-write, and only view-only licenses are available, the client will be view-only, and the activation key will override the read-write configuration of the client.

If a client is configured as view-only, and only read-write licenses are available, the client will use a read-write license, but the view-only configuration of the client will override the read-write activation key, and will allow view-only access to the project on the server.

Do not rely on the activation key to determine whether the client is view-only. Always configure the client deliberately as view-only.

Each floating license requires one installation of the appropriate activation key on the server. For read-write licenses, the RSVRADS.CLI key is required. For view-only licenses, the RSVRADS.ROC key is required. To increase the number of client licenses available, install additional activation keys on the server. Keep in mind, however, that no matter how many licenses you have, the maximum number of clients that can be connected at one time is 20.

‘Dedicated’ client licenses

Dedicated client licenses are installed on the client. These licenses ensure a particular client will always have a license to connect to any RSVIEW32 Active Display Server. Keep in mind, however, that no matter how many licenses you have, the maximum number of clients that can be connected to a server at one time is 20. The client checks for locally installed, dedicated licenses before requesting a floating license from the server.

Starting and stopping the server

You cannot start or stop an Active Display Server from a remote computer. Starting or stopping the server must take place at the server computer, and can take place automatically when RSVIEW32 starts or stops. For details, see page 21.

The method you choose for starting the RSVIEW32 Active Display Server depends on whether you want to connect RSVIEW32 Active Display Browsers to the server.

If you don’t want to use the browser

To start the RSVIEW32 Active Display Server

1. Click the Windows Start button, point to Programs, Rockwell Software, RSVIEW32, and then click RSVIEW32 Works or RSVIEW32 Runtime.
2. Open a project: on the File menu, click Open, and then double-click a project name.
3. Open the RSVIEW32 System folder in the Project Manager, and then double-click Command Line.

4. Type `DisplayServerOn`. You can also execute the command in a startup macro, or you can assign it to a touch control or an object, such as a button.

The Active Display Server icon appears in the taskbar:



IMPORTANT

The project you load must have at least one user account, other than the default, before clients can connect and log in. For more information about security and the RSVIEW32 Active Display System, see page 47.

If you do want to use the browser

Deciding what users see

The `default.htm` file that is generated when you start the Active Display Server gives the user of the Active Display Browser different options, depending on whether:

- the Active Display Server is running on the computer to which the Active Display Browser is connected
- you specified a default graphic display for browsers when you issued the `DisplayServerOn` command at the server

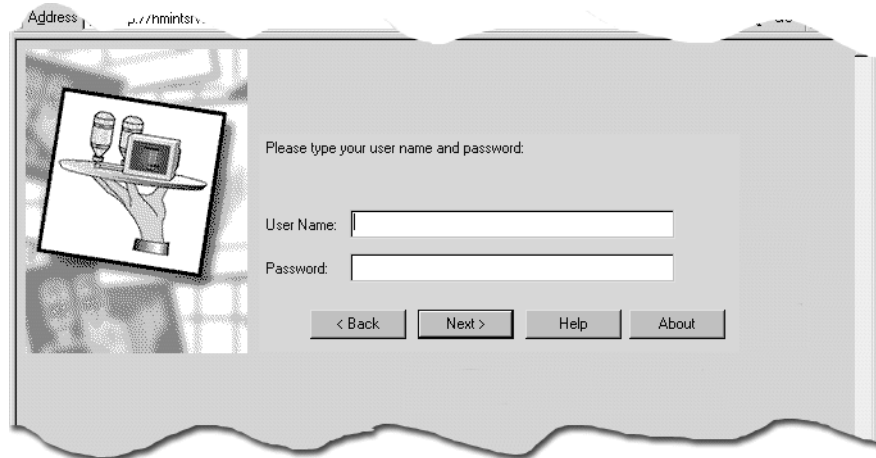
If the Active Display Server is running, and you specified an initial graphic display

To specify a graphic display that appears automatically when the user connects to the Active Display Server, start the RSVIEW32 Active Display Server with the `/G` parameter. For example, the command

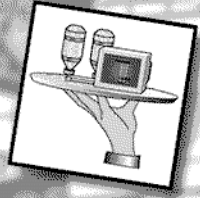
`DisplayServerOn /GMain`

starts the RSView32 Active Display Server, and points Active Display Browsers to the Main graphic display file in the RSView32 project running on the server.

If the RSView32 project does not use Windows Security Options, when the user clicks Next, the following screen appears in the browser window:



Address http://hmintrv...



Please type your user name and password:

User Name:

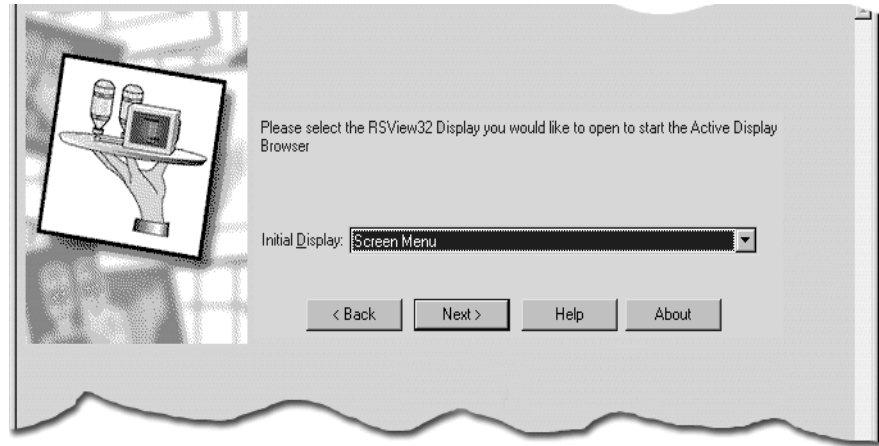
Password:

< Back Next > Help About

If the user name and password are correct, when the user clicks OK, the initial graphic specified for the DisplayServerOn command appears in the browser window.

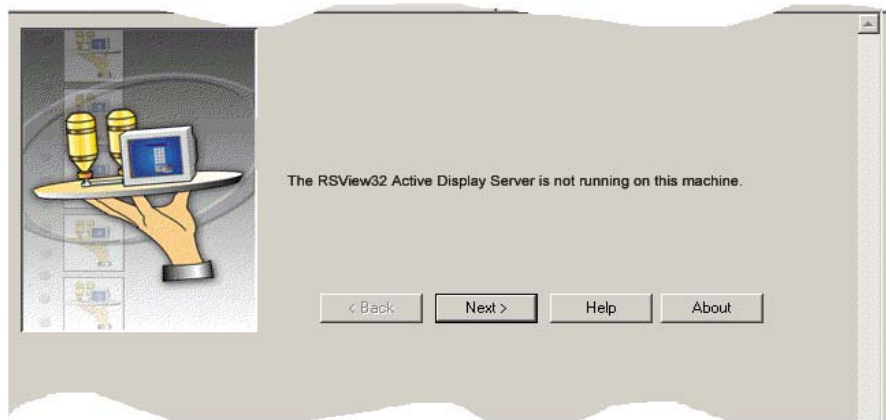
If the Active Display Server is running, and you did not specify an initial graphic display

If the Active Display Server is running on the computer the user is connecting to, but you did not specify an initial graphic display, after logging in the user is prompted to select a graphic display from the current project.



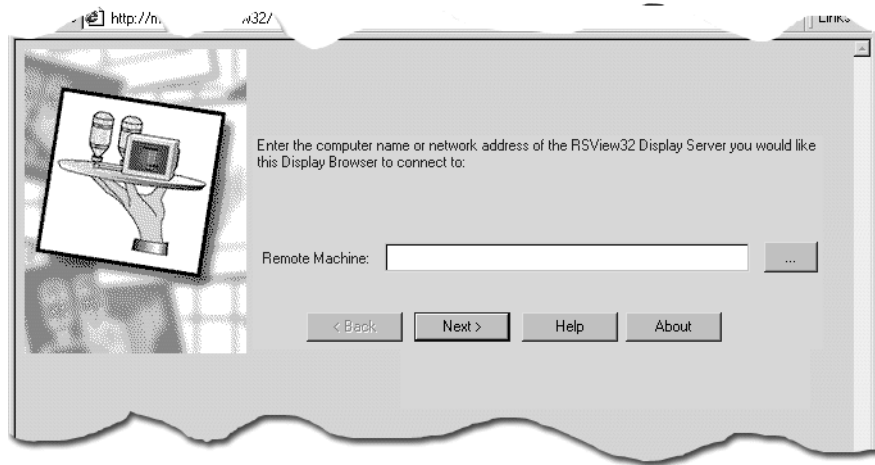
If the Active Display Server is not running

If the Active Display Server is not running when the user browses to the server's location, the following screen appears in the browser window, allowing the user to browse for another Active Display Server:



If another Active Display Server computer is accessible via the local network, the user can browse for another server computer on the network.

If another Active Display Server computer is not accessible via Network Neighborhood, the user must type the computer's name or network address.



DisplayServerOn command syntax

For information about the syntax for the DisplayServerOn command, see Chapter 5, *Commands*.

Stopping the server

To stop the RSView32 Active Display Server

1. Open the System folder of the project that is open on the Active Display Server, and double-click Command Line.
2. Type DisplayServerOff.
3. The Active Display Server icon disappears from the taskbar.

Starting and stopping the server automatically

When you run your project, the `DisplayServerOn` command can be executed automatically. To do this, add the `DisplayServerOn` command to a startup macro for your project. When you close your project, the `DisplayServerOff` command is executed automatically.

Setting up the station

About the RSVIEW32 Active Display Station

Install the RSVIEW32™ Active Display Station on workstations you want to connect to a project on an Active Display Server.

You can use the Active Display Station to perform all the activities of RSVIEW32 Runtime, including:

- loading, viewing, and interacting with graphic displays
- adjusting set points
- viewing real-time and historical trends
- performing global alarm management
- providing a secure runtime operator environment

Determining system requirements

The hardware and software you use with the RSVIEW32 Active Display Station depend on the demands your project places on the system. The greater the demand, the more powerful a system you need.

The recommendations below are based on field experience. It is possible that your application will operate on a platform below these recommendations.

In the following tables, the demands your project places on the system are represented by points. Total your points in step 1, and then use the table in step 2 to determine the hardware and software you need.

Step 1 ■ Total your points

For	If you are	Add points
RSView32 graphics	using complex displays, or displays containing lots of animation	1
	running displays on the client that contain more than 300 tag references*	2
	running displays on the client that contain more than 100 tag references*	1
	changing displays on the client, on average, more than five times per minute	1
Alarms	using any alarm summaries on the client	2
	using more than four simultaneously active alarm summaries on the client	2
	displaying alarm summaries with more than 500 outstanding transactions (the number of lines in an unfiltered alarm summary)	1
Commands	using startup or shutdown macros in displays	1
	using macros containing more than 10 commands in client displays	1
Total your points here		
* A tag reference is a link between a graphic object in a display running on the client and a tag in the tag data-base on the server that provides the graphic object with runtime data.		

Step 2 ■ Determine the recommended system configuration

For this number of points	You need this hardware	You need this software
7 or more	Pentium® II 266 MHz 64 MB RAM 100 Megabit Ethernet®	Windows® XP Professional* or Windows 2000 Professional**
5 to 6	Pentium MMX 200 MHz 64 MB RAM 10 Megabit Ethernet	Windows 2000 Professional**
2 to 4	Pentium MMX 166 MHz 64 MB RAM 10 Megabit Ethernet	Windows 2000 Professional**
0 to 1	Pentium 100 MHz 24 MB RAM 10 Megabit Ethernet	Windows 2000 Professional**
* With Service Pack 1 or later.		
** With Service Pack 3 or later.		

Installing the RSView32 Active Display Station

There are two ways to install the RSView32 Active Display Station software:

- The CD-ROM install requires that you have a CD-ROM and are physically able to access each Active Display Station computer. For details, see page 26.
- The network install allows you to install or upgrade the Active Display Client software from the server, without installing from a CD-ROM on each client computer. To use the network install or upgrade option, clients must have Internet Explorer 5.0 or a later version of Internet Explorer installed.

For details about installing the station software from the network, see page 27.

How clients install the software over the network

When you start the Active Display Server using the `DisplayServerOn` command, the server generates a web page called `default.htm` in the RSVIEW32 project directory. You can connect to the project running on the server using Internet Explorer, by browsing to the URL:

`http://<ServerComputer>/RSView32`

where *ServerComputer* is the name of the computer on which the Active Display Server is running.

The `default.htm` file connects Internet Explorer to the project running on the server, and checks if the RSVIEW32 Active Display Station software is installed on the client computer.

If the software is installed, the browser connects to the server. If the software is not installed, or if the software is out of date, the software is installed or upgraded automatically from a default directory on the RSVIEW32 Active Display Server.

You can specify an alternate location for the Active Display Station setup files. For details about using the `DisplayServerOn` command, see page 67.

Installing the client software from CD-ROM

The steps below explain how to install the Active Display Station from the CD-ROM to your computer.

To install the RSVIEW32 Active Display Station on Windows Server 2003, Windows XP, Windows 2000 or Windows Vista

1. Close all open Windows programs.
2. Place the RSVIEW32 Active Display System CD-ROM into your CD-ROM drive. The CD should start running automatically.

If the CD does not start automatically, run `D:\SETUP.EXE`, where D is the drive containing the CD.

3. Follow the instructions on the screen.
4. During installation, you will be prompted to activate the RSVIEW32 Active Display Station.
 - If you want to install a dedicated client license, insert the Master disk in the disk drive, and then click Activate.
 - If you want to install a floating client license, you must install it on the server.

For more information about the different kinds of licenses and activation keys, see “Activation keys” on page 13.
5. When prompted, restart Windows.

Installing the client software from a network

1. Start Internet Explorer.
2. Browse to the address `http://Servername/RSVIEW32`, where *Servername* is the name of the server computer.
3. Wait for the Active Display Client setup program to download. When it is finished downloading, the Active Display Client setup program will start automatically.
4. To install the Active Display Client software, follow the instructions on the screen.

To install the required software, the Internet Explorer security level for your local intranet zone must be medium or lower. For information about changing the security level of your local intranet zone, see Internet Explorer Help.

Activation keys

If you are using ‘floating’ client licences, the RSVIEW32 Active Display Station uses any RSVRADS.CLI (for read-write licenses) or RSVRADS.ROC (for view-only licenses) activation keys that are not in

use on the server. You do not need to activate the RSVIEW32 Active Display Station after installation.

If you want to ensure that a particular client will have a license to connect to an RSVIEW32 Active Display Server (even if the server does not have a license available), you must activate the RSVIEW32 Active Display Station by installing a dedicated client activation key (RSVRADS.GCS) on the RSVIEW32 Active Display Station. Keep in mind, though, that no matter how many licenses you have, the maximum number of simultaneous client connections on the server is 20. For more information, see “Activation keys” on page 13 and “‘Dedicated’ client licenses” on page 16.

FactoryTalk® Activation Grace Period

FactoryTalk® Activation provides customers with access to critical software components for a grace period of 7 days regardless of availability of valid activations. When a product is successfully activated, all grace period records will be cleared and the product will proceed with valid activations.

RSVIEW32 Active Display Station

- During the grace period, FactoryTalk® Activation will display a Grace Period warning message box to the user and log a diagnostic warning message to FactoryTalk® Diagnostics every four hours if no valid activation key located on Station side detected.
- If there is more than one RSVIEW32 Active Display Station running on the same computer, the grace period start time is counted from the time when the first client launches. When the grace period expires, RSVIEW32 Active Display Client will not be launched.

Configuring stations

Once the Active Display Station (client) software has been installed on your computer, you need to configure it with information about:

- which display server to connect to
- which RSVIEW32 components to load from the server
- the runtime properties of the Active Display Station window (for example, whether the window is maximized or whether it has a title bar)
- whether the station is view-only or read-write

There are six steps in configuring an Active Display Station. The Active Display Station Configuration Wizard walks you through the process of configuring client windows. The configuration information is stored in a file with a .dst extension.

To connect with multiple Display Servers, or to load different components when establishing a connection, you can configure multiple windows on an Active Display Station. Each client window can connect to only one Active Display Server.

To configure a new RSVIEW32 Active Display Station window

1. Click the Windows Start button, point to Programs, Rockwell Software, RAD System, and then click RSVIEW32 Active Display Station.
2. The configuration wizard appears. Follow the instructions on the screen.

If you need more information as you use the configuration wizard, click Help.

Editing station configurations

To edit an Active Display Station configuration, right-click the configuration file's icon from My Computer, Windows Explorer, or File Manager.

To edit an RSView32 Active Display Station configuration

1. Locate the configuration file using My Computer, Windows Explorer, or File Manager, and right-click the file's icon.
2. Click Edit.
3. Follow the configuration wizard's steps to edit the configuration.

To rename an RSView32 Active Display Station configuration

1. Locate the configuration file using My Computer, Windows Explorer, or File Manager, and right-click the file's icon.
2. Click Rename.
3. Type the new name for the configuration. The configuration file must have the extension .dst.

To delete an RSView32 Active Display Station configuration

1. Locate the configuration file using My Computer, Windows Explorer, or File Manager, and right-click the file's icon.
2. Click Delete.

Creating shortcuts to an RSView32 Active Display Station configuration

1. Locate the configuration file using My Computer, Windows Explorer, or File Manager, and right-click the file's icon.
2. Click Create Shortcut.
3. Drag the shortcut to the desired folder, or to the Windows desktop.

Using clients with a dial-up connection

If you do not want to connect Active Display Stations to an Active Display Server through dial-up networking, proceed to “Starting the RSVIEW32 Active Display Station” on page 36.

If you want to use dial-up networking to connect Active Display Stations or Active Display Browsers to an Active Display Server, you must configure the following:

- for the server:
 - On Windows Server 2003/XP/2000, set up network connections on the server. If you have not already done so, see “Windows Server 2003 /XP network connections .” on page 11 or “Windows 2000 network connections.” on page 11.
- for the clients, install and configure Dial-Up Networking. For more information, see the sections that follow.

Configuring Windows Server 2003 or Windows XP for dial-up networking

Step 1 ■ Install TCP/IP

1. Click Start, point to Settings, and then click Control Panel.
2. Double-click Network Connections.
3. Right-click Local Area Connections, and then select Properties.
4. Click Install.
5. Select Protocol, and then click Add.
6. Select Internet Protocol (TCP/IP).

7. Configure the TCP/IP settings for your network in the Microsoft® TCP/IP Properties dialog box.

For information about the settings in this dialog box, see your network administrator.

Step 2 ■ Create a network connection

1. Click Start, point to Settings, and then click Control Panel.
2. In the Control Panel double-click Network Connections.
3. Select Create a new connection.
4. Work through the dialog boxes in the Network Connection wizard, selecting Connect to the network at my workplace, and Dial-up connection.
5. In the phone number box in the wizard, type the phone number of the computer that is running the Active Display Server.

Step 3 ■ Configure the network connection

1. Right-click the connection you just created, and then click Properties.
2. Click the Networking tab, and in the list for Type of dial-up server I am calling, click PPP: Windows 95/98/NT4/2000, Internet.
3. Select the Internet Protocol (TCP/IP) check box. And then click the Properties button.
4. Select the following before clicking OK:
 - Obtain an IP address automatically
 - Obtain DNS server address automatically
 - Use default gateway on remote network
 - Use IP header compression
5. Click Settings, and then click Enable LCP extensions and Enable software compression.

6. Click the Security tab, and then select Allow unsecured password.
7. Click OK to save the changes.

Configuring Windows 2000 for dial-up networking

Step 1 ■ Install TCP/IP

1. Click Start, point to Settings, and then click Control Panel.
2. Double-click Network and Dial-up Connections.
3. Right-click Local Area Connections, and then select Properties.
4. Click Install.
5. Select Protocol, and then click Add.
6. Select Internet Protocol (TCP/IP).
7. Configure the TCP/IP settings for your network in the Microsoft TCP/IP Properties dialog box.

For information about the settings in this dialog box, see your network administrator.

Step 2 ■ Create a network connection

1. Click Start, point to Settings, and then click Control Panel.
2. Double-click Network and Dial-up Connections.
3. Double-click Make New Connection.
4. Work through the dialog boxes in the Network Connection wizard, selecting Dial-up to a private network.
5. In the phone number box in the wizard, type the phone number of the computer that is running the Active Display Server.

Step 3 ■ Configure the network connection

1. Right-click the connection you just created, and then click Properties.
2. Click the Networking tab, and in the list for Type of dial-up server I am calling, click PPP: Windows 95/98/NT4/2000, Internet.
3. Select the Internet Protocol (TCP/IP) check box. And then click the Properties button.
4. Select the following before clicking OK:
 - Obtain an IP address automatically
 - Obtain DNS server address automatically
 - Use default gateway on remote network
 - Use IP header compression
5. Click Settings, and then click Enable LCP extensions and Enable software compression.
6. Click the Security tab, and then select Allow unsecured password.
7. Click OK to save the changes.

Configuring Windows Vista Business for dial-up networking

Step 1 ■ Install TCP/IP

1. Click Start, and then click Control Panel.
2. Double-click Network and Sharing Center.
3. At Local Area Connections, click View Status.
4. Click Properties.
5. Click Install.
6. Select Protocol, and then click Add.

7. Select Internet Protocol (TCP/IP).
8. Configure the TCP/IP settings for your network in the Microsoft® TCP/IP Properties dialog box.

For information about the settings in this dialog box, see your network administrator.

Step 2 ■ Create a network connection

1. Click Start, and then click Control Panel.
2. In the Control Panel double-click Network and Sharing Center.
3. In the left hand pane, click Set up a connection or network.
4. Select Connect to a workplace and click Next.
5. Select Set up a dial-up connection, and then Dial Directly.
6. In the phone number box in the wizard, type the phone number of the computer that is running the Active Display Server.

Step 3 ■ Configure the network connection

1. In the left hand pane, select Manage network connections.
2. Right-click the dial-up connection you have just created, and then click Properties.
3. Click the Networking tab.
4. Select the Internet Protocol (TCP/IP/4) check box, and then click the Properties button.
5. Check the following boxes in the General tab:
 - Obtain an IP address automatically
 - Obtain DNS server address automatically

6. Click the Advanced button and check the following boxes:
 - Use default gateway on remote network
 - Use IP header compression
 7. In the Options tab, click PPP Settings, and then click Enable LCP extensions and Enable software compression.
 8. In the Security tab, select Allow unsecured password.
- Click OK to save the changes.

Starting the RSView32 Active Display Station

When you have configured one or more Active Display Station windows, you are ready to connect to an Active Display Server.

Bypassing proxy server connections

If your network makes use of proxy connections, you must bypass them before connecting to an Active Display Server.

To bypass proxy server connections in Windows Server 2003, Windows XP and Windows 2000

1. Click Start, point to Settings, and then click Control Panel. (For Windows Server 2003, just click Start and then click Control Panel.)
2. Double-click Internet Options.
3. Click the Connections tab.
4. Do one of the following:
 - If you are using a dial-up connection to connect to the server computer, click the dial-up connection, and then click Settings.
 - If you are using a direct network connection to the server computer, click LAN Settings.

5. Select Bypass proxy server for local addresses.
6. Click OK.

Starting a station using a direct network or dial-up connection

1. If you are not connecting to the server using dial-up networking, skip to the next step. Otherwise, connect to the computer running the Active Display Server.

For details about connecting to a remote computer using dial-up networking, see Help for your Windows operating system.

2. Do one of the following:

- Locate the configuration file using My Computer, Windows Explorer, or File Manager, and double-click it.
- Click the Windows Start button, point to Programs, Rockwell Software, RAD System, and then click RSVIEW32 Active Display Station. The client configuration wizard appears.

Choose Run an Existing Client Window Connection, then select a configuration file from the list, or choose the Browse button to locate a configuration file. When you have located a configuration file, click OK.

If you want to open an Active Display Station automatically when Windows starts, place a shortcut to its configuration file in the Windows Startup folder.

3. If your RSVIEW32 project does not use Windows Security Options you will be prompted to type the user name and password assigned to you by the system administrator of the Active Display Server to which you are connecting.

If you don't want to type your user name and password every time you log in, check the "Remember name and password" option. However, the login dialog box appears each time, prompting for

confirmation of the user name and password. You can omit this prompt by starting the Active Display Station from the command line using the /AUTOLOGIN option, described in the next section.

4. Once you have entered all the information, click OK.

Bypassing the station login dialog box

If you are using RSView32 security and have not configured your project for Windows Security Options, you can have the Active Display Station log you into the server automatically, bypassing the login dialog box on every login after the first.

1. Supply a valid user name and password, and check the “Remember name and password” option the first time you log in.
2. On subsequent logins, use the /AutoLogin option and a configuration file as command-line parameters to the RADSTATION32.EXE program. To do this, modify the text in the shortcut’s Target box to read:

```
C:\<path>\RADSTATION32.EXE C:\<path>\SERVER1.DST  
/AUTOLOGIN
```

This logs the user into the server specified in the SERVER1.DST file, using the login name and password you specified the first time you logged in. The login user name and password are saved in the SERVER1.DST file. The login dialog box is not displayed.

You can also bypass the login screen by configuring your RSView32 project for Windows Security Options. For more information, see the *RSView32 User’s Guide*, or see Help.

Starting the station automatically when Windows starts

- Create a shortcut to the .dst file you want to start automatically, and put the shortcut in the Windows Startup folder.

Setting up the browser

The Active Display Browser helps you integrate fully interactive, real-time RSVIEW32™ graphic displays into the Microsoft® Internet Explorer web browser, version 5.0 or later. The Active Display Browser allows you to link your RSVIEW32 graphic displays to other web pages, providing a common, browser-style method of navigation to multiple information systems in a single web browser (for example, an intranet application).

It is not necessary to use the Active Display Browser for remote dial-up use. Use the Active Display Station instead, because the Active Display Station has capabilities not available with the Active Display Browser. For more information about the differences between the Active Display Station and the Active Display Browser, see page 65.

IMPORTANT

The Active Display Browser is not intended for long-term system operation, because it depends on third-party software that is not guaranteed to be fully compatible or reliable when used with the RSVIEW32 Active Display System. The Active Display Browser also has no “lockdown” capabilities, and features limited window management.

This chapter describes how to install and configure the Active Display Browser. For information about installing and configuring the Active Display Station, see Chapter 2, *Setting up the station*.

Determining system requirements

The system requirements for the browser are the same as for the station. For details, see page 23.

Installing the RSView32 Active Display Browser

To use the Active Display Browser, you must have Microsoft Internet Explorer version 5.0 or later installed on your computer.

The Active Display Browser uses the same client setup program as the Active Display Station. When you first connect to a server, using Internet Explorer, the client setup program is downloaded and started automatically. For more information, see “Installing the client software from a network” on page 27.

Connecting to an RSView32 Active Display Server

You cannot access an Active Display Server located on the protected side of a firewall. For information about bypassing proxy server connections for local network addresses, see “Bypassing proxy server connections” on page 36.

Connecting to a server using a direct Internet connection

To connect to an Active Display Server

1. Start Internet Explorer
2. In the Address box, type:

`http://<ServerComputer>/RSView32`

where <ServerComputer> is the host name, Windows® computer name, or TCP/IP address of a computer running the Active Display Server.

3. Follow the instructions on the screen. If you need more information as you connect to a graphic display, click Help.

Connecting to an Active Display Server using a dial-up connection

To connect to an Active Display Server using a dial-up connection, you must first configure the operating system you are using for Dial-Up Networking, establish a connection with the server computer, and then browse to the URL for the RSView32 project running on the server.

Step 1 ■ Configure your operating system for dial-up networking

The procedure for configuring an Active Display Browser computer for Dial-Up Networking is the same as for an Active Display Station computer. For details, see “Using clients with a dial-up connection” on page 31.

Step 2 ■ Connect to the server computer

For information about using Dial-Up Networking to establish a connection with the RSView32 Active Display Server computer, see Help for your Windows operating system.

Step 3 ■ Type the address for the project

When you are connected to the Windows Vista, Windows Server 2003, Windows XP or Windows 2000 network on which the Active Display Server is running, in the browser’s Address box type the address for the project that is running on the server.

To connect to an Active Display Server

1. Start Internet Explorer
2. In the Address box, type:

`http://<ServerComputer>/RSView32`

where *<ServerComputer>* is the host name, Windows computer name, or TCP/IP address of a computer running the Active Display Server.

3. Follow the instructions on the screen. If you need more information as you connect to a graphic display, click Help.

Using the Active Display System

Integrating your RSVIEW32 project with the Active Display System

Parts of RSVIEW32™ appear or react differently when viewed from a client than at the server or when RSVIEW32 is used as a standalone product. To integrate your RSVIEW32 project with the Active Display System, configure your project with these differences in mind.

Activity bar support

The activity bar is supported in the station, but not in the browser.

The activity bar displays client-side information or error messages. You can use the configuration wizard to specify whether or not to display an activity bar along the bottom of each Active Display Station window. The activity bar is exactly the same as the RSVIEW32 activity bar, except that you cannot specify what information the activity bar displays—all the information categories are displayed.

Use the configuration wizard to enable or disable the activity bar. The activity bar is enabled by default for the Active Display Station.

To scroll through entries in the activity bar, click an entry and use the scrollbars to view the history of messages. To display more messages, you can undock the activity bar and resize it.

Activity logging

Clients do not have a locally-stored activity log. Only commands sent to the Active Display Server are logged in the server's log file.

Alarms

Clients do not support objects not contained in graphic displays. Only graphic displays with *embedded objects* are supported. You can only use commands that are related to embedded alarm summaries (for example, AcknowledgeAll).

Each alarm summary object displays the state of the alarms found on the Active Display Server with which the Active Display Station is associated.

Only the internal bell on the server sounds to announce an alarm.

All alarm-related commands operate on the alarms found on the server. This provides global alarm management capabilities. When alarms are acknowledged from a client, the user name recorded in the alarm log file is the name of the user that is logged in at the server, not the client.

File locations

Store all project-related files in their default locations at the server. When you issue the DisplayServerOn command for the first time for a project, an alias for the project's directory is created by the Windows® Internet Service Manager. If the project uses files that are not in their default locations, clients will not be able to access them, unless you set up an alias for them manually in the Internet Service Manager.

Key definitions

Object and display keys that are associated with a graphic display can be used with stations and browsers just as they would be at runtime if the graphic display were running with RSVIEW32.

You can also configure the Active Display Station to download and run a global key definition file when the connection is established with the server, or when a Key command is issued. Global keys are active only when the Active Display Station window has focus.

Global keys cannot be used with the Active Display Browser.

Security

Starting a client connection

- If your RSVIEW32 project uses Windows Security Options, when a client first connects to an Active Display Server the user is validated by the Windows domain controller, and the user is not prompted again for a name and password to access the project.

To use Windows Security Options, the user accounts must be set up for Windows User Lists in the RSVIEW32 project.

- If your project is not using Windows Security Options, when a client first connects to a server the user is prompted for a login name and password.

For the client to use the RSVIEW32 internal user list, at least one account must exist in the RSVIEW32 project.

Before a client can log in, you must make either of the above configurations.

Once logged in, all commands issued from a client are checked for privileges (as they are at runtime by RSVIEW32).

Use the RSVIEW32 Security Codes and User Accounts editors on the Active Display Server to configure security access for users of the system.

If your project uses Windows Security Options, users must have an operating system user account on the Active Display Server. If your project does not use Windows Security Options, users do not need an operating system user account on the server.

Configuring clients as read-only

If you want to configure a client as ‘read-only’ (the client cannot write to tags), you can do so in several ways:

- for the station, configure the client window to be view-only. For information about editing Active Display Station configurations, see page 29.
- Alternatively, secure all the RSVIEW32 commands that result in tag writes. For example, assign the Set, =, Ramp, Download, and DownloadAll commands to a security code to which the client user account does not have access. This works for both stations and browsers.
- To prevent only Active Display Browsers from writing tag information, start the Active Display Server with the command, DisplayServerOn /V.

Changing the logged-in user

To log a different user into the RSVIEW32 Active Display System without disconnecting the client, you can configure a display to issue the login command. If no match is found for the name or password, the current user remains logged in. If you configure a display to issue the logout command, the login dialog box is displayed. If the new login is successful, the previous user is logged out.

Operating system access control

You cannot prevent users of Active Display Browsers from accessing the Windows operating system or other Windows applications.

To prevent the operator of an Active Display Station from accessing the Windows operating system or other Windows applications, disable all the relevant keyboard shortcuts, and configure the Active Display Station window to display maximized and without a title bar.

For Windows Vista, Windows Server 2003, Windows XP, and Windows 2000, operating system access can be disabled using the Win2K XP DeskLock software included with the RSView32 Active Display System. For information about configuring the DeskLock tool, click the Windows Start button, point to Programs, Rockwell Software, RAD System, and then click Win2K XP DeskLock Help.

For Windows Vista, Windows Server 2003, Windows XP, and Windows 2000, you must also configure Active Display Station windows to disable access to the operating system, using the Active Display Station Configuration Wizard. For details about editing station configurations, see page 29.

Startup and shutdown macros

Display startup and shutdown commands or macros execute every time a client or server opens or closes a graphic display. Avoid using tags in your startup or shutdown macros, because tag operations like starting and stopping derived tag files, event files, or setting and resetting tags can have unexpected results.

Trends

Clients can run graphic displays with embedded Trend objects with real-time or historical data sources. For historical trends, the client

retrieves the data for the trend object from the data log that is running on the Active Display Server to which the client is connected.

IMPORTANT

It is possible for one client to affect the behavior of a Trend object running on another client, by writing to a common Trend control tag. To avoid this problem, set up your application so that each client uses unique Trend control tags.

RSView32 VBA code

VBA code is processed at the Active Display Server, but can be started from a client. VBA forms or message boxes display only at the Active Display Server.

VBA code stops running while the forms are visible. For this reason, avoid executing VBA code that launches forms from a client.

Runtime features not supported in the Active Display System

The following features of RSView32 Runtime are not supported in the Active Display System:

Activity logging and printing. Activity logging cannot be performed on a client, and activity logs cannot be printed from the client. However, all commands sent to the Active Display Server, and any errors that result, are logged in the server's activity log.

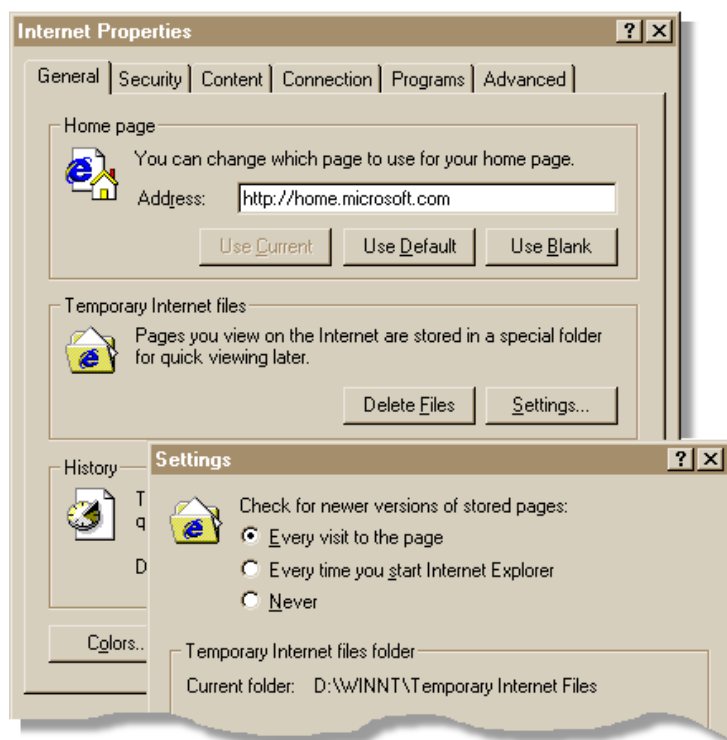
Alarm logging and printing. Alarm logging cannot be performed on a client, and alarm logs cannot be printed from the client.

Data logging. Data logging cannot be performed on a client. However, you can view logged data stored on an Active Display Server through historical trend objects. For more information, see “Trends” on page 49.

Electronic signatures. The functions of the electronic signature button do not work on a client.

Event detection and derived tags. These features are not supported for use with clients (they run on the Active Display Server). However, you can start or stop these components by issuing the appropriate commands remotely, embedded in an object key, push button, macro, and so on.

Graphics display caching. The Display /z command is ignored. The client uses the setting “Check for newer versions of stored pages” in the Internet Settings/Internet Options in Control Panel to determine how client displays are cached. This is a disk cache.



Change the “Check for newer versions of stored pages” setting to “Every visit to the page,” otherwise client windows might not reflect the latest version of the displays on the Active Display Server.

To improve performance over a dial-up connection, change the “Check for newer versions of stored pages” setting to “Never,” to prevent graphic displays from being downloaded over the modem every time a display is opened.

Command processing. Commands in graphic displays or global key files are ignored by the client or are sent to the Active Display Server for processing. Commands processed by the server are global commands—they apply to all clients connected to that project on that server. All other commands are either processed locally by the client, or are ignored because they are not applicable.

When issued at the client, this command	is processed at the
=	server
Abort	client (station only)
Account	n/a
Acknowledge	server
AcknowledgeAll	server
Activity	n/a
ActivityBarOff	n/a
ActivityBarOn	n/a
ActivityLogSendToODBC	n/a
ActivityOff	server
ActivityOn	server
ActivityPrintOff	n/a
ActivityPrintOn	n/a

When issued at the client, this command	is processed at the
ActivityViewer	n/a
Alarm	n/a
AlarmEvent	server
AlarmLogOff	server
AlarmLogOn	server
AlarmLogRemark	server
AlarmLogSendToODBC	n/a
AlarmOff	server
AlarmOn	server
AlarmPrintOff	n/a
AlarmPrintOn	n/a
AlarmViewer	n/a
AppAbort	client
AppActivate	client
AppStart	client
Beep	client
Channel	n/a
Class	n/a
CommandLine	n/a

When issued at the client, this command	is processed at the
ComStatusOff	server
ComStatusOn	server
Database	n/a
DatabaseSync	n/a
DataLog	n/a
DataLogChangeRate	server
DataLogMergeToPrimary	server
DataLogNewFile	server
DataLogOff	server
DataLogOn	server
DataLogPath	n/a
DataLogRenameFile	server
DataLogSnapshot	server
DataLogSwitchBack	server
DDEExecute	client
DDEPokeDisable	server
DDEPokeEnable	server
DDEServerOff	server
DDEServerOn	server

When issued at the client, this command	is processed at the
Define	client
Derived	n/a
DerivedOff	server
DerivedOn	server
Display	client (station only) Display /z is ignored, but Display / za is supported
DisplayServerMonitor	n/a
DisplayServerOff	n/a
DisplayServerOn	n/a
DisplayStationClose	client (station only)
DisplayStationOpen	client (station only)
DownloadAll	client
Download	client
DriverPrimary	server
DriverSecondary	server
DriverToggle	server
EchoOff	server
EchoOn	server
Event	n/a

When issued at the client, this command	is processed at the
EventOff	server
EventOn	server
FlushCache	client
FTDataServerOff	server
FTDataServerOn	server
FTDataWriteDisable	server
FTDataWriteEnable	server
Graphic	n/a
HandshakeOn	server
HandshakeOff	server
Help	n/a
Identify	client
Invoke	client
Key	client
KeyEdit	n/a
LInsertStringTag	server
Login	client (station only)
Logout	client (station only) (Logout issues the Login command)
LTagSubstitute	server

When issued at the client, this command	is processed at the
MacroEdit	n/a
Monitor	n/a
NavigateGFX	client (browser only)
NavigateURL	client (browser only)
NextPosition	client
NextWindow	client (station only)
Node	n/a
NodeDisable	server
NodeEnable	server
NodeSwitch	server
Parameter	n/a
Password	n/a
Pause	client
PlayWave	client (the wave file must be on the client computer)
Position	client
PrevPosition	client
PrevWindow	client (station only)
PrintDisplay	client (station only)
Project	n/a

When issued at the client, this command	is processed at the
ProjectHide	n/a
ProjectRun	n/a
ProjectShow	n/a
ProjectStop	n/a
PullForward	client (station only)
PushBack	client (station only)
Quit	n/a
RecipeEdit	n/a
RecipeRestore	client
RecipeSave	server
Remark	server
RTDataWriteDisable	server
RTDataWriteEnable	server
RTDataServerOff	server
RTDataServerOn	server
ScreenPrint	n/a
Security	n/a
SendKeys	client
Set	server

When issued at the client, this command	is processed at the
SetFocus	client (station only)
Silence	server
SilenceAll	server
StartupConfig	n/a
Summary	n/a
SuppressOff	server
SuppressOn	server
Suppressed	n/a
SuppressOffAll	server
Ramp	server
Toggle	server
Undefine	client
UploadAll	client
Upload	client
VBAEdit	n/a
VBAExec	server

Configuring your RSVIEW32 project for browser navigation

Because web browsers use Universal Resource Locators (URLs) and a ‘previous page - next page’ method of navigation, your RSVIEW32 project needs to be modified to work with the Active Display Browser.

Modifying the Display and Abort commands

The Display and Abort commands used in RSVIEW32 to open and close graphic displays are ignored by the Active Display Browser.

To navigate from one graphic display to another on the same server, the Active Display Browser uses the NavigateGFX command. The browser does not require an equivalent of the Abort command, because only one graphic display can appear in a browser window at one time, and each graphic display replaces the previous one.

Using the NavigateGFX command

The NavigateGFX command requires the name of a graphic display on the same server. For example, the command `NavigateGFX ProcessSummary` displays the current project’s graphic display `ProcessSummary.gfx`. You do not need to specify the `.gfx` extension with the `NavigateGFX` command.

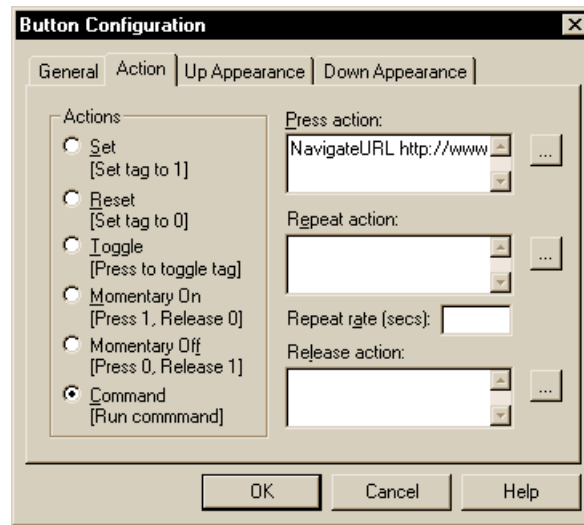
For more information about the `NavigateGFX` command, see page 69.

Integrating the browser with other web sites

The `NavigateURL` command provides a means of browsing from RSVIEW32 to another URL or address, and back again. Use the `NavigateURL` command to integrate RSVIEW32 with other web sites (for example, into your corporate intranet), providing users with a simple, common user interface.

Using the NavigateURL command

You can use the NavigateURL command to specify a new URL from a graphic button or display key.



For example, if your company's intranet is accessible via the URL <http://www.mycompany.com/intranet>, to navigate to your company's intranet page, issue the command

NavigateURL <http://www.mycompany.com/intranet>

To navigate back to the graphic display ProcessSummary, use your browser's Back button.

Navigating to a project's initial graphic display

You can navigate to a project's initial graphic display only if the DisplayServerOn command was started with the /G parameter.

To navigate to the RSView32 project's initial graphic display, add the following link to one of your intranet pages, or type the following address in the browser's Address box:

<http://<ServerComputer>/RSView32>

You can also navigate to the project's initial graphic display using the NavigateGFX command:

NavigateGFX RSVIEW32

Navigating to a project's list of graphic displays

If you did not start the server using the /G parameter to the DisplayServerOn command, the following address will show a list of graphic displays in the project:

<http://<ServerComputer>/RSView32>

You can then select the graphic display you want to navigate to.

Navigating to a specific graphic display

You can navigate from a web page to a specific RSVIEW32 graphic display. For example, if the graphic display ProcessSummary is one you use frequently, you can navigate to it directly. To do this, use a URL of the form:

[http://<ServerComputer>/RSView32/
default.htm?gfx=ProcessSummary](http://<ServerComputer>/RSView32/default.htm?gfx=ProcessSummary)

Similarly, you can navigate to any graphic display on the RSVIEW32 Active Display Server by substituting the name of the graphic display for ProcessSummary in the link shown above.

For more information about the NavigateURL command, see page 70.

Adding parameters to the Display command

You can use most of the command line parameters for the Display command with the URL for a graphic display, or with the NavigateGFX command. However, because all graphic displays occupy the entire browser window, the command line parameters used for screen size and positioning are ignored.

For example, to specify the parameter file “AssemblyLineEast” with the ProcessSummary display, type the URL

```
http://Servername/RSView32/default.htm?gfx=ProcessSummary  
/pAssemblyLineEast
```

If you are using the NavigateGFX command, the command would read

```
NavigateGFX ProcessSummary /pAssemblyLineEast
```

Making your RSView32 project work with a browser

You can make your RSView32 project work with a browser by adding a NavigateGFX command everywhere you have a Display command. By using both commands, you can make objects work both in RSView32 Runtime, and in the Active Display Browser.

To do this, copy and paste the Display command and its parameters, and replace the command Display with NavigateGFX.

For example, the command for a button might be

```
Display ProcessSummary /pAssemblyLineEast
```

You can make this button browser capable by modifying the button’s command to read

```
Display ProcessSummary /pAssemblyLineEast;  
NavigateGFX ProcessSummary /pAssemblyLineEast
```

Avoiding navigation among graphic displays on different servers

While it is possible to navigate from a graphic display on one server to a graphic display on a different server using the NavigateURL command, this is not recommended, because the NavigateURL command requires that you specify the name of the computer on which the Active Display Server is running. If you move the RSView32

project to a computer with a different network address, browser navigation will no longer work.

Maintaining the connection to the server

The connection between the Active Display Browser and the server is maintained for as long as the browser is displaying a graphic on the server.

If the user navigates to an address that is not part of the RSVIEW32 project (for example, the company intranet page), the connection between the browser and the server is maintained for five minutes, to enable the user to go back to the RSVIEW32 graphic display without having to log in again, or be re-authenticated by the server.

If the user views a page that is not part of the RSVIEW32 project for more than five minutes, the connection between the browser and the server is dropped, and the user will have to log in, or be re-authenticated the next time he or she attempts to view an RSVIEW32 graphic display on the server. If a dedicated license is not being used, the client will once again have to acquire a floating client license from the server.

If your RSVIEW32 project is using Windows Security Options, users will be re-authenticated after the five-minute timeout period, but they will not be prompted for a user name and password.

Deploying ActiveX components automatically

RSVIEW32 Active Display Clients can automatically install the correct versions of ActiveX controls required for RSVIEW32 graphic displays.

To deploy ActiveX controls automatically, you must create .cab files for your ActiveX controls using the program CABARC.exe located in the directory \ActiveXControlSetup in the same directory where you installed RSVIEW32.

For information about creating .cab files, see the text file, `CreatingCabFiles.txt` in the `\ActiveXControlSetup` directory. The text file contains examples for creating CAB files, and information about the naming conventions that must be used.

If you open a graphic file containing an embedded ActiveX object that is not installed on the Active Display Client, the file will run, but a rectangle containing the text “ActiveX Component Not Installed on Client” will appear in place of the embedded ActiveX object.

Differences between the station and the browser

The Active Display Browser is identical to the Active Display Station, except:

- global keys are not supported in the browser. Display and object keys are supported.
- it is not possible to disable access to the Windows operating system or other windows applications in the browser.
- the Client Window Configuration wizard is not used to set up the Active Display Browser. The browser relies on URLs for locating graphic displays.
- all displays opened in the Active Display Browser occupy the entire browser window—Windows-style pop-up windows (for messages, for example) are not supported.
- tooltips are not supported in the browser.
- the activity bar and status bar are not supported in the browser.
- the Display and Abort commands are ignored by the browser. Use the `NavigateGFX` command instead.

Commands

The following commands are specific to the RSVIEW32™ Active Display System. They are added to RSVIEW32 automatically when you install the Active Display Server.

DisplayServerOn `DisplayServerOn [/G<display>] [/V]`

This command starts the Active Display Server.

`/G<display>` For use with the RSVIEW32 Active Display Browser. Opens the specified graphic display in the Active Display Browser when the browser first connects to the server. The specified graphic display is the browser's initial graphic display.

If the display name contains spaces, enclose the display name in quotes, for example, `DisplayServerOn /G"Process Overview"`.

`/V` For use only with the RSVIEW32 Active Display Browser. Opens the browser as read-only, and any commands normally executed at the server, are ignored.

**DisplayServer
Off** `DisplayServerOff [/Q]`

This command stops the Active Display Server. This command is ignored if it is given from a client. If a client is active when the command is given, a warning message is displayed on the server. You can continue to shut down the server or cancel the command. If you proceed with shutting down the server, all active connections are closed.

`/Q` Closes all active client connections without prompting the user for confirmation.

DisplayServer Monitor

DisplayServerMonitor

This command is issued from the Active Display Server. It has no parameters. It displays the list of clients currently connected to the Active Display Server. The Display Server Monitor also displays version and serial number information in the Help About box.

You can terminate a client connection by selecting the connection and pressing Delete.

DisplayStation Open

DisplayStationOpen <[display_station_path]filename>

This command, when executed from an Active Display Station, opens the specified Active Display Station window.

For example, the command

```
DisplayStationOpen \\Production1\Program Files\Rockwell  
Software\Samples\RSView\Samples\Samples.dst
```

opens the Sample Active Display Station Window on the Production1 server.

If the client you are opening is not in the path of the client you are issuing the command from, you must use the *<display_station_path>* parameter.

Examples

- To open a client that is on the local drive and in the path:
DisplayStationOpen Client1.dst
- To open a client that is on a local drive but not in the path:
DisplayStationOpen C:\DST\Client1.dst
- To open a client that is on a network drive but not in the path:
DisplayStationOpen J:\DST\Client1.dst

DisplayStation Close

DisplayStationClose [display_station_path] [parameter]

When executed from an Active Display Station, this command closes the specified Active Display Station window if it is open. If you use this command without a parameter, the current Active Display Station window closes.

Parameter can be:

[DST file] The .dst file for the client window you want to close.

Me Closes the client window that has focus.

[title bar text] Closes the client window with the specified text in its title bar.

If the client you are closing is not in the path of the client you are issuing the command from, you must use the `<display_station_path>` parameter.

NavigateGFX

NavigateGFX <file> [/E] [/U] [/O] [/Pfile] [/Ttag_name]

This command opens and runs the specified graphic display file in the Active Display Browser. Any parameters specified here override settings in the Display Settings dialog box in the Graphic Display editor.

<file> The name of a graphic display file without a file extension.

[/E] Disables the Enter key so it does not download values in numeric input fields to the programmable controller or server, unless the Display On-Screen Keyboard option is selected (in the Behavior tab of the Display Settings dialog box).

[/U] Updates tag values in all input fields when the display first opens.

[/O] Suppresses the display of the key list.

[/Pfile] The name of the parameter file that contains the tag names to be substituted for placeholders in the display. If the display does not contain placeholders, do not use this parameter.

If the parameter file has a long file name, enclose the file name in quotes, for example /P“Long file name”.

[/Ttag_name] One or more tags, separated by commas and no spaces, to be substituted for placeholders in the display. If the display does not contain placeholders, do not use this parameter.

NavigateURL

NavigateURL <URL>

This command navigates to the web page specified by the URL. The NavigateURL command must be issued from the Active Display Browser.

<URL> The address for any web page.

Example

To open the Rockwell Software home page, type:
NavigateURL www.rockwellsoftware.com

Getting the information you need

Using Help

The RSVIEW32™ Active Display System Help provides procedures and reference information for working with all the features in the RSVIEW32 Active Display System. To open Help while the RSVIEW32 Active Display System is running:

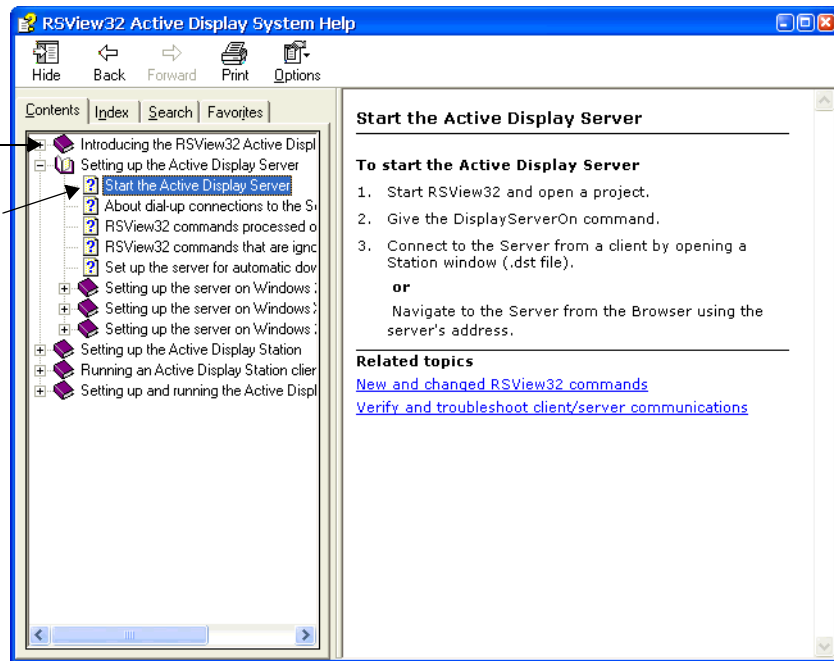
- on the taskbar, click Start, point to Programs, Rockwell Software, RAD System, and then click RSVIEW32 Active Display System Help
- click the Help button in the RSVIEW32 Active Display Station Configuration Wizard

Viewing the Help contents

For an overview of the RSVIEW32 Active Display System Help, click the Contents tab.

To see the topics in a book, double-click the book.

To see a topic, click the topic.



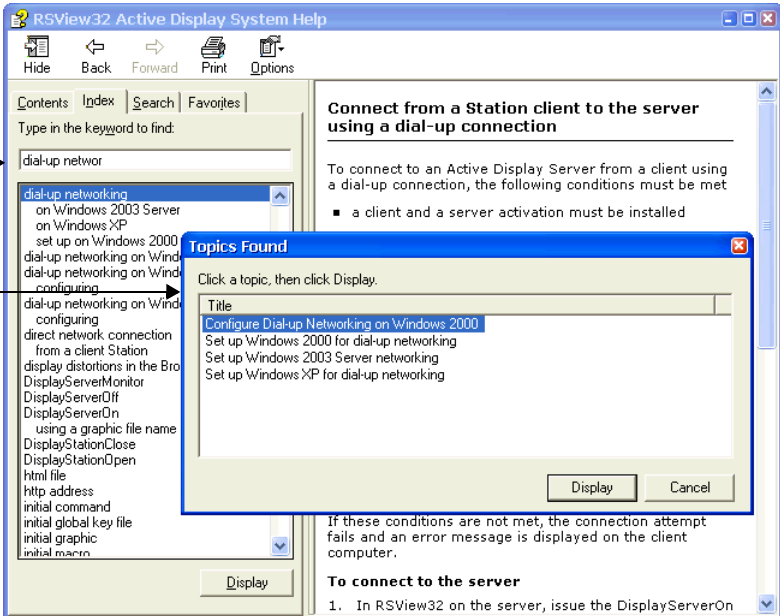
Using the index

The Help index is similar to an index in a book, listing keywords for topics in the Help. To see the index, click the Index tab.

As you type a word here, index entries are listed below.

If the index entry refers to more than one topic, the Topics Found box opens.

To open a topic, double-click the highlighted topic, or click Display.

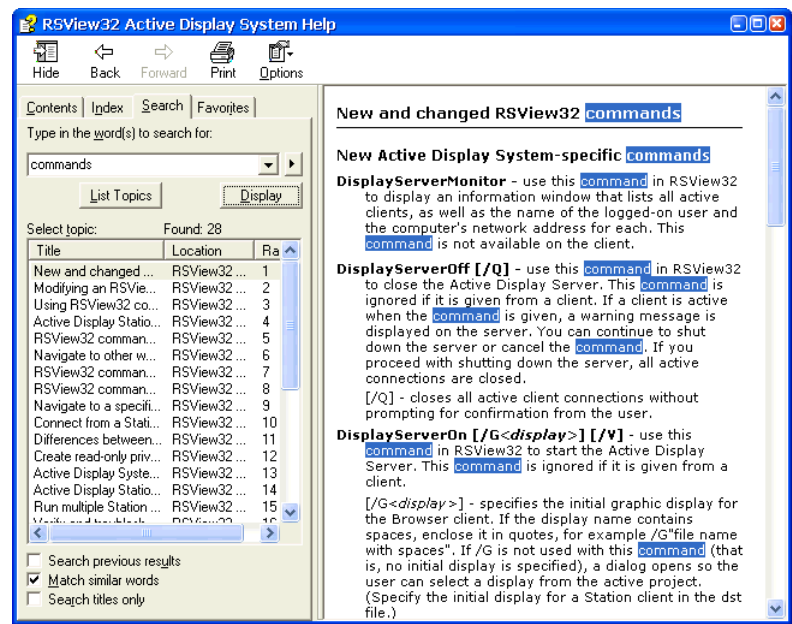


The screenshot shows the 'RSView32 Active Display System Help' window. The 'Index' tab is selected. The search bar contains the text 'dial-up network'. Below the search bar, a list of index entries is displayed, including 'dial-up networking on Windows 2000', 'dial-up networking on Windows XP', and 'dial-up networking on Windows 2003 Server'. The entry 'dial-up networking on Windows 2000' is highlighted. A 'Topics Found' dialog box is open, showing a list of topics related to dial-up networking on Windows 2000. The topics listed are 'Configure Dial-up Networking on Windows 2000', 'Set up Windows 2000 for dial-up networking', 'Set up Windows 2003 Server networking', and 'Set up Windows XP for dial-up networking'. The 'Display' button is visible at the bottom of the dialog box.

Finding words or topics

To search the entire text of the Help, click the Search tab.

Type in a word to search for and click List Topics. To see a particular topic, double-click the topic, or highlight the topic and click Display.



Technical support

If you have questions about configuring network connections, consult your Windows® documentation. For information about configuring your web browser, consult the documentation for your web browser.

If you have questions about RSView32, consult the user's guides or the Help. Or, click Help, Rockwell Software on the Web, and then click the name of the web page you want to view. To use Rockwell Software on the Web, you must have a web browser installed on your computer and a current internet connection.

If you can't find the answers, contact Rockwell Software Technical Support:

Telephone 440-646-3434

Internet support <http://www.rockwellsoftware.com> or
<http://support.rockwellautomation.com>

Support staff are available Monday through Friday from 8 A.M. to 5 P.M. eastern time, except during holidays.

When you call

When you call, be at your computer and be prepared to give the following information:

- the product serial number and product version number

You'll find these numbers on the Activation Disk label, or in either of the following places in the software:

- in RSView32, click Help, and then click About RSView32. Click the Add-Ons button, click RSView32 Active Display System, and then click the Details button
- in the Help About box of the Active Display Server Monitor (not in the Active Display Station Help About dialog box)
- the type of hardware you are using

- the exact wording of any messages that appeared on your screen
- a description of what happened and what you were doing when the problem occurred
- a description of how you tried to solve the problem

You may also be required to provide information about the RSVIEW32 add-ons and updates that are installed on your computer.

To view the list of installed add-ons and updates

1. With the Project Manager window active, click Help, About RSVIEW32.
2. Click Add-ons to view the list of installed add-ons. Click Updates to view the list of installed updates.

Index

A

Abort command

troubleshooting ■ 65

About

Active Display Browser ■ 41

Active Display Server ■ 1

Active Display Station ■ 23

security ■ 47

Activation

Active Display Station ■ 27

client activations ■ 14

dedicated licenses ■ 16, 27

errors ■ 14

floating licenses ■ 15

read-write licenses ■ 27

server activations ■ 14

view-only licenses ■ 15, 27

Activation disk

activation keys ■ 13

Activation keys

for RSView32 Active Display System ■ 13

Active Display Browser

about ■ 41

commands ■ 52

configuring as view-only ■ 48, 67

configuring for navigation ■ 60

connecting to server ■ 42

connecting to server via dial-up ■ 43

differences from Active Display Station ■ 65

initial graphic display ■ 17

installing ■ 42

integrating with web sites ■ 60

navigating to initial display ■ 61

navigating to list of displays ■ 62

navigating to specific display ■ 62

using with dial-up connection ■ 31

Active Display Server

about ■ 1

commands ■ 52

installing ■ 12

specifying initial graphic display ■ 17

starting and stopping ■ 16

starting and stopping automatically ■ 21

starting for use with the browser ■ 17

stopping ■ 20

Active Display Station

about ■ 23

activation ■ 27

bypassing login ■ 38

CD-ROM install ■ 26

commands ■ 52

configuring as view-only ■ 29, 48

creating shortcuts ■ 30

deleting ■ 30

differences from Active Display Browser ■ 65

editing configuration ■ 29

network install ■ 27

new configuration ■ 29

renaming ■ 30

starting ■ 36, 37

starting automatically ■ 39

using ■ 36

using with dial-up connection ■ 31

ActiveX objects

deploying automatically ■ 64

troubleshooting ■ 65

Activity bar

using ■ 45

Activity logging

troubleshooting ■ 50

using ■ 46

Alarm logging

- troubleshooting ■ 50
- Alarm printing
 - troubleshooting ■ 50
- Alarms
 - using ■ 46
- Aliases for directories ■ 46
- AUTOLOGIN option ■ 39
- Automatic deployment of ActiveX controls ■ 65

B

- Bypassing logins ■ 38
- Bypassing proxy server ■ 36

C

- CAB files ■ 65
- Caching
 - troubleshooting ■ 51
- Commands
 - Abort ■ 60
 - Display ■ 60, 62
 - DisplayServerMonitor ■ 68
 - DisplayServerOff ■ 67
 - DisplayServerOn ■ 67
 - DisplayStationClose ■ 69
 - DisplayStationOpen ■ 68
 - NavigateGFX ■ 60, 69
 - NavigateURL ■ 61, 70
 - processing at server or client ■ 52
 - troubleshooting ■ 52
- Configuring
 - Active Display Stations ■ 29
 - Internet Information Server ■ 9

D

- Data logging
 - troubleshooting ■ 50
- default.htm file ■ 17, 26, 62, 63
- Deleting
 - Active Display Station configurations ■ 30
- Deploying ActiveX controls ■ 65
- Derived tags
 - troubleshooting ■ 51

- Dial-up connections
 - using clients with ■ 31
- Dial-up networking
 - configuring in Windows 2000 ■ 33
 - configuring in Windows Server 2003 ■ 31, 34
 - configuring in Windows XP ■ 31, 34
- Directory aliases ■ 46
- Disabling operating system access ■ 49
- Display command
 - troubleshooting ■ 65
- DisplayServerMonitor command ■ 68
- DisplayServerOff command ■ 67
- DisplayServerOn command ■ 67
- DisplayStationClose command ■ 69
- DisplayStationOpen command ■ 68

E

- Electronic signatures
 - troubleshooting ■ 51
- Embedded alarm objects ■ 46
- Event detection
 - troubleshooting ■ 51

F

- File locations ■ 46
- Forms
 - problems with at clients ■ 50

G

- Global key file
 - using ■ 47
- Global keys
 - troubleshooting ■ 65
- Graphic displays
 - troubleshooting caching ■ 51

H

- Help
 - contents ■ 72
 - finding words in ■ 74
 - index ■ 73
 - opening ■ 71

I

Initial display

navigating to ■ 61

Installation

Active Display Browser ■ 42

Active Display Server ■ 12

Active Display Station from CD-ROM ■ 26

Active Display Station from network ■ 27

before you begin ■ 9

Microsoft Internet Information Server ■ 9

Internet Information Server

installing and configuring ■ 9

K

Key definitions

using ■ 47

L

Licences

all in use ■ 14

List of displays

navigating to ■ 62

Login

at runtime ■ 47

bypassing ■ 38

changing the current user ■ 48

M

Macros ■ 49

Modifying

RSView32 project for browser ■ 63

N

NavigateGFX command ■ 69

NavigateURL command ■ 70

O

Objects

embedded ■ 46

Operating system access

disabling ■ 49

troubleshooting ■ 65

P

Printing

troubleshooting ■ 50

Proxy server

bypassing ■ 36

Q

Quick start ■ 1

R

Read-only clients

configuring ■ 48

Renaming

Active Display Station configurations ■ 30

RSView32 project

modifying for browser ■ 63

S

Security

at runtime ■ 47

disabling operating system access ■ 49

logging in at runtime ■ 47

Setup

Active Display Server ■ 12

Active Display Station from CD-ROM ■ 26

Active Display Station from network ■ 27

before you begin ■ 9

Microsoft Internet Information Server ■ 9

Shortcuts

to Active Display Station configurations ■ 30

Starting

Active Display Stations ■ 37

Active Display Stations automatically ■ 39

Starting Active Display Stations ■ 36

Startup and shutdown macros ■ 49

Status bar

troubleshooting ■ 65

Support ■ 75

T

Technical support ■ 75

Tooltips

- troubleshooting ■ 65
- Trends
 - affected by other clients ■ 49
 - using ■ 49
- Troubleshooting ■ 75
 - Abort command ■ 65
 - ActiveX objects ■ 65
 - activity logging ■ 50
 - alarm logging ■ 50
 - alarm printing ■ 50
 - browser navigation ■ 63
 - commands ■ 52
 - connections to server ■ 64
 - data logging ■ 50
 - derived tags ■ 51
 - differences between clients ■ 65
 - Display command ■ 65
 - electronic signatures ■ 51
 - event detection ■ 51
 - global keys ■ 65
 - graphics display caching ■ 51
 - operating system access ■ 65
 - printing ■ 50
 - RSView32 features not supported on Active Display System ■ 50
 - status bar ■ 65
 - tooltips ■ 65
 - VBA forms ■ 50
 - window sizing in browser ■ 65

U

- Using
 - Active Display Stations ■ 36

- activity bar ■ 45
- activity logging ■ 46
- alarms ■ 46
- global key file ■ 47
- key definitions ■ 47
- startup and shutdown macros ■ 49
- trends ■ 49
- VBA code ■ 50

V

- VBA code
 - at runtime ■ 50
 - problems with forms ■ 50

W

- Win2K XP DeskLock tool ■ 49
- Windows 2000
 - configuring for dial-up networking ■ 33
 - network connections, setting up ■ 11, 12
 - Service Pack ■ 9, 25
- Windows Security Options ■ 47
- Windows Server 2003
 - configuring for dial-up networking ■ 31, 34
 - network connections, setting up ■ 11
 - Service Pack ■ 9
- Windows Service Packs ■ 9, 25
- Windows Vista
 - network connections, setting up ■ 11, 12
- Windows XP
 - configuring for dial-up networking ■ 31, 34
 - network connections, setting up ■ 11
 - Service Pack ■ 9, 25