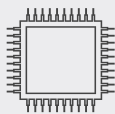




High performance, industrial-grade desktop with long-term stability

OPTIPLEX XE3 OEM-READY TOWER AND SMALL FORM FACTOR



IMPRESSIVELY POWERFUL

Intel® 8th generation processors allow for the fastest OptiPlex yet. Next gen discrete graphics robust SSD and hard drive options power productivity.



DURABLE BY DESIGN

Sustainably built with premium materials, it is designed for high heat tolerance up to 45° C ambient. XE3 is Marine certified and stands up to rigorous testing including MIL-STD 810G.



ULTIMATE EXPANDABILITY

Tool-less design with extensive scalability, including advanced M.2 PCIe NVMe SSD, optional 2nd NIC and Thunderbolt port, plus legacy support provide the most expandable desktop.



OEM-READY

Make it your own, with Dell OEM-Ready that removes Dell branding from physical product, BIOS, BIOS splash screen, systems management menus, packaging and documentation. Plus a minimum three-and-a-half-year purchase lifecycle stability to minimize change.

25 YEARS

OptiPlex

Recommended Accessories

OPTIPLEX XE3 OEM-READY TOWER AND SMALL FORM FACTOR



OPTIPLEX SMALL FORM FACTOR ALL-IN-ONE STAND

Small footprint mounting solution featuring integrated monitor power and Ethernet cables, as well as monitor adjustability with height, tilt, swivel and pivot functions.



DELL 24 MONITOR - P2419H

23.8" ultrathin bezel optimized for dual display productivity. Easy Arrange feature enables multitasking efficiency and its small base frees valuable workspace.



OPTIPLEX CABLE COVERS

Thermally tested custom cable covers offer an easy to install and attractive way to manage cables and secure ports.



OPTIPLEX DUST FILTERS FOR SMALL FORM FACTOR AND TOWERS

Custom dust filters safeguard internal components in factory, warehouse, or retail environments.

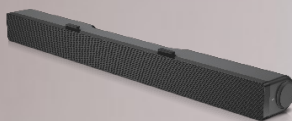


DELL PRO STEREO HEADSET - UC350

Communicate clearly with a headset optimized to provide in-person sound quality, certified for Microsoft Skype for Business.

OPTIPLEX XE3 REMOTE PS/2 POWER SWITCH CABLE

Cable connected to the PS2 port on the back of the XE3 provides access to a power button away from the box.



DELL PROFESSIONAL SOUND BAR - AE515

Optimize conference calls and multimedia streaming with exceptional audio clarity. Minimize background noise with the dual mic array and echo cancellation feature.



DELL ULTRASHARP 24 MONITOR - U2417H

Get up to 18% more done with dual monitors, and see more with virtually borderless InfinityEdge. Attain vividly clear visuals across an ultrawide 23.8" Full HD viewing angle.



DELL BUSINESS MULTIMEDIA KEYBOARD - KB522

Robust keyboard features mid-profile keycap for great typing experience, quiet acoustics and durability for daily business usage.



DELL WIRED MOUSE WITH FINGERPRINT READER - MS819

Swipe the integrated fingerprint reader for secure sign on, designed to operate seamlessly with Microsoft's biometric sign-in features.



DELL LASER SCROLL USB 6-BUTTONS SILVER AND BLACK MOUSE

Best-seller mouse is ideal for productivity users looking for fast, accurate response



DELL WIRELESS KEYBOARD AND MOUSE - KM636

Compact design and chiclet keys, this essential desktop solution offers the convenience of wireless and clutter-free performance.

Built for business



SECURE

Only Dell provides innovative data security solutions that meet security challenges and business concerns head-on to protect your most critical and at-risk asset, your data. With Dell Data Security solutions, end users can work where and how they want knowing that data is protected. Dell Data Guardian protects data where ever it goes. Dell Endpoint Security Suite, powered by Cylance, stops up to 99% of malware.



MANAGEABLE

The world's most manageable desktop is built to allow flexible and automated BIOS and system configurations through Dell Client Command Suite free tools. We make it easy to deploy, monitor and update your OptiPlex fleet.



RELIABLE

Features a reliable, built-to-last chassis that has undergone extensive testing including military-grade MIL-STD 810G, as well as component, accessory and lifecycle testing. OptiPlex beats the stress of the highly accelerated life test (HALT), ensuring premium quality from concept to production.

Features & Technical Specifications

Feature	OptiPlex XE3 OEM-Ready Technical Specifications ¹
Processors ¹	Intel Celeron™ G4900 (2 Cores/2MB/2T/3.1GHz/65W); supports Windows 10/Linux Intel Pentium™ Gold G5400 (2 Cores/4MB/4T/3.7GHz/65W); supports Windows 10/Linux Intel® Core™ i3-8100 (4 Cores/6MB/4T/3.6GHz/65W); supports Windows 10/Linux Intel® Core™ i5-8500 (6 Cores/9MB/6T/up to 4.1GHz/65W); supports Windows 10/Linux Intel® Core™ i7-8700 (6 Cores/12MB/12T/up to 4.6GHz/65W); supports Windows 10/Linux
Chipset	Intel® Q370 Chipset
Operating System Options ¹	Microsoft® Windows 10 Home (64-bit) Microsoft® Windows 10 Pro (64-bit) Microsoft® Windows 10 IoT Enterprise LTSC 2019 EMB - Value (requires Customer License Agreement CLA) Microsoft® Windows 10 IoT Enterprise LTSC 2019 EMB - High End (requires Customer License Agreement CLA) Ubuntu® 16.04 LTS (64-bit)
Graphics Options ²	Integrated Intel® HD Graphics 630 AMD Radeon™ R5 430, 2GB AMD Radeon™ RX 550, 4GB NVIDIA GeForce® GT 730, 2GB NVIDIA GeForce® GTX 1050, 4GB (Tower only) Dual AMD Radeon™ R5 430, 2GB Dual AMD Radeon™ RX 550, 4GB (Tower only)
Memory	4 DIMM slots; Non-ECC dual-channel 2666Hz DDR4 SDRAM (Memory performance on Intel® Core i3 processor and below will be at 2400MHz). Max memory is 64GB 4GB (1x4GB) 2666MHz DDR4 Memory 8GB (2x4GB) 2666MHz DDR4 Memory 8GB (1x8GB) 2666MHz DDR4 Memory 16GB (2x8GB) 2666MHz DDR4 Memory 16GB (1x16GB) 2666MHz DDR4 Memory 32GB (4x8GB) 2666MHz DDR4 Memory 32GB (2x16GB) 2666MHz DDR4 Memory 64GB (4x16GB) 2666MHz DDR4 Memory
Networking ¹⁴	Integrated Intel I219-LM Ethernet LAN 10/100/1000 Qualcomm® QCA61x4A Dual-band 2x2 802.11ac Wireless with MU-MIMO + Bluetooth 4.2 Intel® Wireless-AC 9560, Dual-band 2x2 802.11ac Wi-Fi with MU-MIMO + Bluetooth 5
I/O Ports	Tower/SFF 10 External USB: 1 x USB Type-C 3.1 Gen 2; 5 x 3.1 Gen 1 Type-A (1 front, 4 rear) and 4 x 2.0 (2 Type-A front (one with PowerShare), 2 Type A rear (both SmartPower On) 1 RJ-45 2-Displayport 1-Serial 2-PS/2 1 Optional 3 rd Video Port (VGA/DP/HDMI 2.0b/USB Type-C alt-mode) Optional Powered USB add-in card, Optional Powered Serial add-in card 1 Universal Audio Jack 1 Line-Out
Removable Media Options	Optional 8x DVD-ROM 9.5mm ODD Optional 8x DVD+/-RW 9.5mm ODD Optional SD Media Card Reader
Storage Options ⁴	2.5 inch 500GB 5400rpm SATA Hard Disk Drive 2.5 inch 500GB 7200rpm SATA Hard Disk Drive 2.5 inch 500GB 5400rpm SATA Solid State Hybrid Drive w/ 8GB Flash 2.5 inch 500GB 7200rpm FIPS Self Encrypting Opal 2.0 Hard Disk Drive 2.5 inch 1TB 7200rpm SATA Hard Disk Drive 2.5 inch 1TB 5400rpm SATA Solid State Hybrid Drive w/ 8GB Flash 2.5 inch 2TB 5400rpm SATA Hard Disk Drive 3.5 inch 500GB 7200rpm SATA Hard Disk Drive 3.5 inch 1TB 7200rpm SATA Hard Disk Drive 3.5 inch 2TB 7200rpm SATA Hard Disk Drive

Features & Technical Specifications

Feature

OptiPlex XE3 Technical Specifications¹

M.2 128GB SATA Class 20 Solid State Drive
 M.2 1TB PCIe Class 40 Solid State Drive
 M.2 256GB PCIe NVMe Class 40 Solid State Drive
 M.2 256GB SATA Class 20 Solid State Drive
 M.2 256GB SATA Class 20 Self Encrypting Opal 2.0 Solid State Drive
 M.2 512GB PCIe NVMe Class 40 Self Encrypting Opal 2.0 Solid State Drive
 M.2 512GB PCIe NVMe Class 40 Solid State Drive
 M.2 512GB SATA Class 20 Solid State Drive
 M.2 512GB SATA Class 20 Self Encrypting Opal 2.0 Solid State Drive
 M.2 Intel® Optane™ Memory 16GB

Chassis

Form Factor	Tower	Small Form Factor (SFF)
Dimensions (H x W x D)	13.8" x 6.1" x 10.8"	11.42" x 3.7 x 11.50"
Dimensions (H x W x D) (cm)	35 x 15.4 x 27.4	29.0 x 9.26 x 29.2
Min. Weight (lbs/kg)	17.49 / 7.93	11.57 / 5.26
Number of Bays (max)	1 internal 3.5" HDD 2 internal 2.5" HDD 1 internal slim ODD Optional 5.25" bay	1 x 3.5" or 2 x 2.5" HDD
		1 internal slim ODD
Expansion Slots	1 Full Height PCIe x16 1 Full Height PCIe x16 (wired x4) 1 Full Height PCI and 1 Full Height PCIe x1	1 Half Height PCIe x16 1 Half Height PCIe x16 (wired x4) 1 M.2 for wireless (22x30mm)
	1 M.2 for wireless (22x30mm)	1 M.2 for storage (22x80mm / 22x30mm)
	1 M.2 for storage (22x80mm / 22x30mm)	
Power Supply¹⁶	360W typical 90% Efficient PSU (80 PLUS Gold); ENERGY STAR compliant, Active PFC	300W typical 90% Efficient PSU (80 PLUS Gold); ENERGY STAR compliant, Active PFC

Recommended accessories

Monitors: qualified with select Dell UltraSharp, Professional, and E series monitors
Small Form Factor mounting option: Small Form Factor All-in-One Stand
Keyboards: Dell wired keyboard with multimedia functionality, Dell Smart Card keyboard, Dell wireless keyboard
Mouse: Dell wired mouse, Dell wireless mouse, Dell Laser mouse, Dell Wired Fingerprint Reader Mouse
Audio Speakers: Internal Dell Business audio speaker, Dell stereo speaker systems available; Dell sound bar for select flat-panel displays. Dell Wireless Speaker System available.
Audio Headsets: Dell Pro Stereo headsets

Security Options

Trusted Platform Module⁶ TPM 2.0, Dell Data Protection| Encryption, Microsoft Windows BitLocker, Local HDD data wipe via BIOS ("Secure Erase"), Encryption - SED HDD (Opal FIPS), Chassis lock slot support, Lockable Port Cover, Chassis Intrusion Switch, D-Pedigree (Secure Supply Chain Functionality), Setup/BIOS Password, Optional Smart Card keyboards, Intel® Trusted Execution Technology, Intel® Identity Protection Technology, Firmware support for optional Absolute Data & Device Security (formerly Computrace)⁷, Intel Software Guard eXtensions

Systems Management Options⁹

Dell Client Command Suite for In-Band Systems Management, Optional Intel Standard Manageability

Environmental, Ergonomic & Regulatory Standards¹⁰

Environmental Standards (eco-labels): ENERGY STAR, EPEAT Registered⁹, TCO Certified, CEL, WEEE, Japan Energy Law, South Korea E-standby, South Korea Eco-label, EU RoHS, China RoHS¹⁴. Please see your local representative or www.dell.com for specific details.

Warranty

Limited Hardware Warranty¹⁰; Standard Next Business Day On Site Service after Remote Diagnosis¹¹; Optional Dell ProSupport offers premium support from expert technicians and 24x7 availability¹².

Configuration Services

Factory Image load, BIOS Customization, Hardware Customization, Asset Tagging and Reporting.



OPTIPLEX XE3 OEM-READY

OPTIPLEX XE3 OEM-READY TECHNICAL SPECIFICATIONS¹

Discover professional class desktops at www.DellTechnologies.com/OptiPlex

¹ Offering may vary by region. Some items may be available after product introduction. For complete details, refer to the Technical Guidebook published on www.dell.com.

² System Memory and Graphics: Significant system memory may be used to support graphics, depending on system memory size and other factors.

³ 4GB or Greater System Memory Capability: A 64-bit operating system is required to support 4GB or more of system memory.

⁴ Particular versions of Microsoft Windows may not support the full Bluetooth 4.2 functionality

⁵ Storage: GB means 1 billion bytes and TB equals 1 trillion bytes; actual capacity varies with preloaded material and operating environment and will be less.

⁶ PSU: This form factor utilizes a more efficient Active Power Factor Correction (APFC) power supply. Dell recommends only Universal Power Supplies (UPS) based on Sine Wave output for APFC PSUs, not an approximation of a Sine Wave, Square Wave, or quasi-Square Wave (see UPS technical specifications). If you have questions please contact the manufacturer to confirm the output type.

⁷ TPM is not available in all regions.

⁸ Absolute™ Data & Device Security: An Absolute™ offer. Some conditions apply. Terms and Conditions at www.absolute.com/legal

⁹ Systems Management Options: Desktop and mobile Architecture for System Hardware (DASH) - Fully enabled at point of purchase.

¹⁰ For complete listing of declarations and certifications, refer to the Dell Regulatory and Environmental Datasheet found in the Manuals section of Product Support information at www.dell.com/support/home/us/en/19

¹¹ Please refer to www.epeat.net for specific country registration rating and participation.

¹² Limited Hardware Warranty: For copy of Ltd Hardware Warranty, write Dell USA LP, Attn: Warranties, One Dell Way, Round Rock, TX 78682 or see www.dell.com/warranty

¹³ Onsite Service after Remote Diagnosis: Remote Diagnosis is determination by online/phone technician of cause of issue; may involve customer access to inside of system and multiple or extended sessions. If issue is covered by Limited Hardware Warranty (www.dell.com/warranty) and not resolved remotely, technician and/or part will be dispatched, usually within 1 business day following completion of Remote Diagnosis. Availability varies. Other conditions apply.

¹⁴ Dell Services: Availability and terms of Dell Services vary by region. For more information, visit www.dell.com/servicesdescriptions