

**VOICE RECOGNITION TIPS** (If equipped)

**BLUETOOTH®**

**Command**      **Example**  
 Dial <Phone #> — “Dial 7-1-4-9-6-5-3-0-0-0”  
 Call <Name> — “Call John Smith”

Improving how you store your contacts can optimize your Bluetooth® Voice Recognition performance:  
 • Use full names instead of short or single-syllable names (“John or Dad”)  
 • Avoid using special characters/emojis or abbreviations (“Dr.”) when saving contacts

**NAVIGATION**

**Command**      **Example**  
 Find Address — “1-2-3-4-5 1st Street, <House #, Street, City, State>  
 Find <POI Name> — “Find McDonald’s”

**WALK THE CUSTOMER THROUGH EACH OF THE FOLLOWING KEY DELIVERY FEATURES**

- MANUAL / AUTOMATIC CLIMATE CONTROL – pages 19
  - Explain different air modes to a customer.


**Manual**



**Automatic**



- DEFROST – page 19

- Press the front defrost button.  FRONT
- Set to warmest temperature setting.
- Set to highest fan speed.

- TIRE PRESSURE MONITORING SYSTEM (TPMS) – page 52

- Explain TPMS function to customer.
- When illuminated, one or more tires are under-inflated.
- Blinks for approximately one minute then remains illuminated when there is a malfunction with the TPMS.
- You can also check the individual tire pressures in the Information Display mode in the LCD cluster. Tire pressures are displayed in the cluster after a few minutes of driving.



- VEHICLE SETTINGS – page 15

- Demonstrate vehicle settings in either the LCD cluster or the multimedia screen (vehicles w/navigation)
- Demonstrate navigation use, enter dealer address
- Show radio presets

- BLUETOOTH – page 23

- Demonstrate phone pairing
- Refer to [www.hyundaiusa.com/bluetooth](http://www.hyundaiusa.com/bluetooth)
- Demonstrate QR code

- BLUE LINK – pages 26

- Assist with creating MyHyundai.com account
- Assist with Blue Link enrollment
- Show Blue Link Users Manual
- Encourage customer to download the MyHyundai with Blue Link app

- VOICE RECOGNITION – page 25

- Review Voice Recognition tips
- Show Voice Recognition tear off card and have owner place in convenient location

**MAINTENANCE**

Unit: mile

Scheduled Maintenance (Normal Usage)	Smartstream G2.5 GDI
Engine Oil and Filter	Replace 8,000 or 12 mos.
Fuel Additives	Add 7,500 or 12 mos.
Tire Rotation	Perform 7,500
Vacuum Hose	Inspect 7,500 or 12 mos.
Air Cleaner Filter	Inspect 7,500 or 12 mos. Replace 22,500 or 36 mos.
Climate Control Air Filter (for Evaporator and Blower Unit) Air Conditioning Refrigerant	Replace Every 12 mos.
Brake Hoses & Lines	
Drive Shafts & Boots	
Front Brake Disc/Pads, Calipers	Inspect 7,500 or 12 mos.
Rear Brake Disc/Pads	
Steering Gear Box, Linkage & Boots / Lower Arm Ball Joint, Upper Arm Ball Joint	
Suspension Mounting Bolts	
Exhaust Pipe & Muffler	
Fuel Tank Air Filter	
Vapor Hose & Fuel Filler Cap, Fuel Tank	
Brake Fluid	Inspect 15,000 or 24 mos.
Parking Brake	
Fuel Filter	
Fuel Lines, Fuel Hoses and Connections	Inspect 30,000 or 48 mos.
Drive Belt	Inspect First 48,000 or 72 mos. Subsequent, every 8,000 or 12 mos.
Spark Plugs	Replace 97,500
Coolant	Replace First 120,000 or 120 mos. Subsequent, every 30,000 or 24 mos.
Automatic Transmission Fluid	No checks or services required for Normal Usage driving.

\*Check the engine oil regularly between recommended oil change intervals. We recommend Quaker State oil.

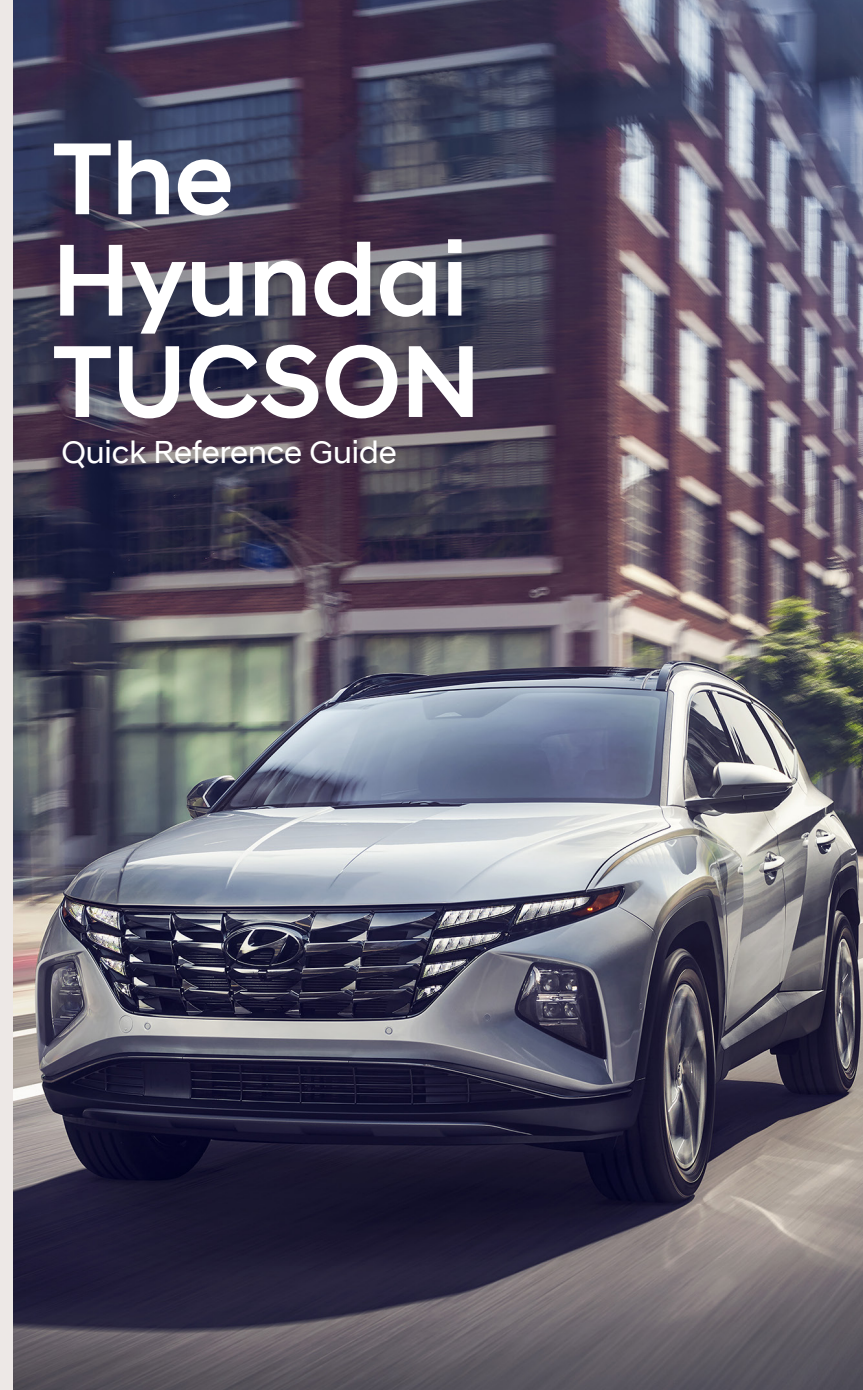
\*See Owner's Manual for details regarding Severe Usage maintenance recommendations.

Looking for more detailed information? This Quick Reference Guide does not replace your vehicle's Owner's Manual. If you require additional information or are unsure of a specific issue, you should always refer to the vehicle's Owner's Manual or contact your authorized Hyundai dealer.

The information contained in this Quick Reference Guide was correct at the time of printing; however, specifications and equipment can change without notice. No warranty or guarantee is being extended in this Quick Reference Guide, and Hyundai reserves the right to change product specifications and equipment at any time without incurring obligations. Some vehicles are shown with optional equipment. Specifications apply to U.S. vehicles only. Please contact your Hyundai dealer for current vehicle specifications.

# The Hyundai TUCSON

Quick Reference Guide



Roadside Assistance: 1-800-243-7766  
 Consumer Affairs: 1-800-633-5151  
 Sirius XM® Radio: 1-800-967-2346  
 Blue Link: 1-855-2BLUELINK (1-855-225-8354)

## **HYUNDAI VEHICLE OWNER PRIVACY POLICY**

Your Hyundai vehicle may be equipped with technologies and services that use information collected, generated, recorded or stored by the vehicle. Hyundai has created a Vehicle Owner Privacy Policy to explain how these technologies and services collect, use, and share this information.

You may read our Vehicle Owner Privacy Policy on the Hyundaiusa.com website at <https://www.hyundaiusa.com/owner-privacy-policy.aspx>. If you would like to receive a hard copy of our Vehicle Owner Privacy Policy, please contact our Customer Care Center at:

Hyundai Customer Care  
P.O. Box 20850  
Fountain Valley, CA 92728  
800-633-5151  
[consumeraffairs@hmausa.com](mailto:consumeraffairs@hmausa.com)

Hyundai's Customer Care Center representatives are available Monday through Friday, between the hours of 6:00 AM and 5:00 PM PST and Saturday between 6:30 AM and 3:00 PM PST (English). For Customer Connect Center assistance in Spanish or Korean, representatives are available Monday through Friday between 6:30 AM and 3:00 PM PST.

Headlights  
Page 13

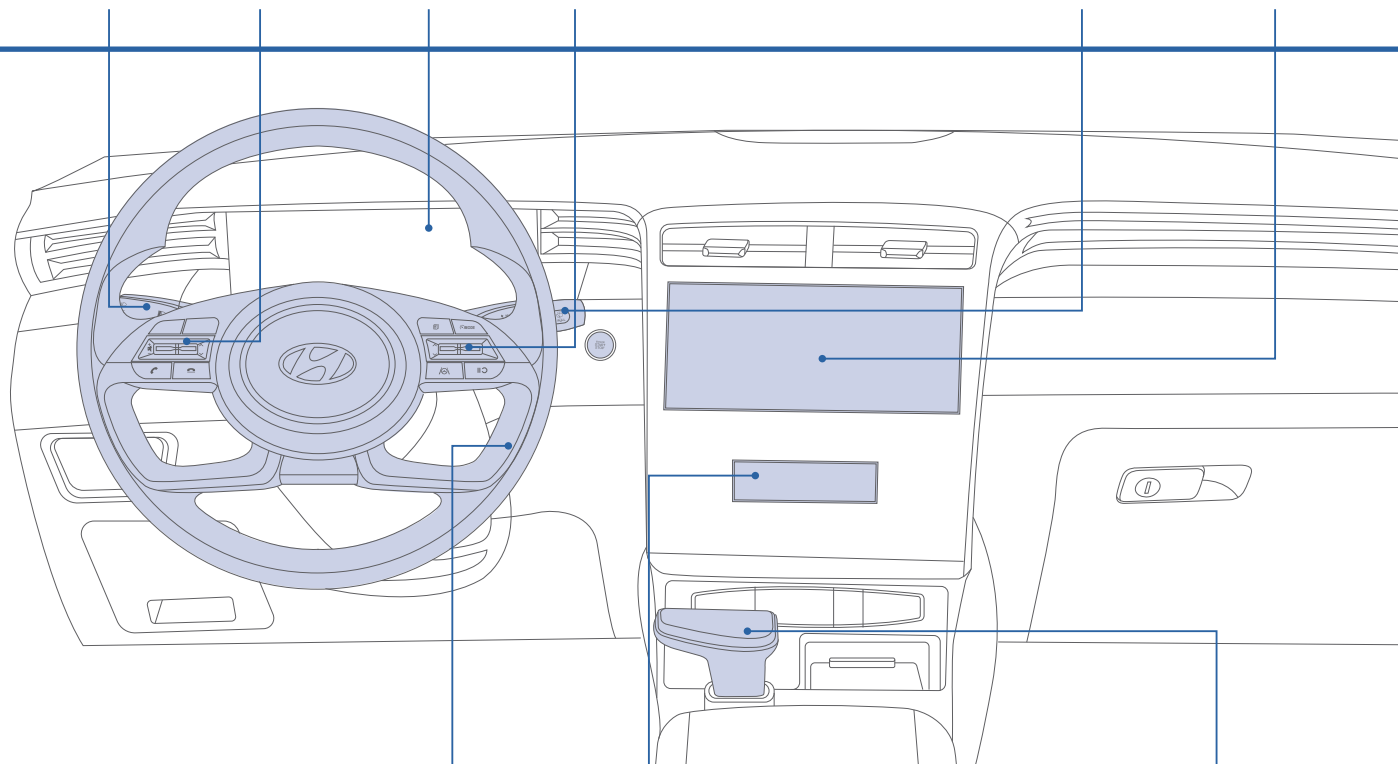
Steering  
Wheel Audio  
Control  
Page 23

Instrument  
Cluster  
Page 15

Smart Cruise  
Control  
Page 54

Wiper and Washer  
Page 14

Navigation  
Page 30



Steering Wheel  
Adjustment  
Page 03

Climate  
Control  
Page 19

Automatic  
Transmission  
Page 43

**WARNING!**

To reduce the risk of serious injury to yourself and others, read and understand the important SAFETY INFORMATION in your Owner's Manual.

Use this Quick Reference Guide to learn about the features that will enhance your enjoyment of your Hyundai. More detailed information about these features are available in your Owner's Manual.

**FEATURES AND CONTROLS**

Child-Protector Rear Door Lock	07
Climate Control	19
Door Locks	02
Driver's Main Controls	07
Engine Start / Stop Button	03
Front Seat Adjustment	05
Fuel Filler Door	02
Hands Free Smart Liftgate	08
Headlights	13
Headrest Adjustment	04
Heated and Ventilated Front Seats	06
Heated Steering Wheel Button	21
Homelink wireless garage control system	11
Instrument Cluster	15
Instrument Panel Illumination	17
Interior Lights	10
LCD Display Modes	17
Panoramic Sunroof	09
Power Liftgate Operation	08
Rear Seat Folding	04
Seat Belt Adjustment	04
Service Interval Reminder System	17
Smart Key	01
Steering Wheel Adjustment	03
Trip Computer	18
Warnings and Indicators	18
Wiper and Washer	14
Wiper blades	14

**INFOTAINMENT**

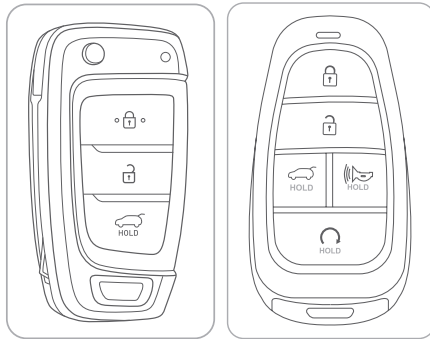
Android Auto™	31
Android Auto™ wireless	33
Apple Carplay™	35
Apple Carplay™ wireless	39
Audio Operation	29
Blue Link Telematics System	26
Bluetooth Operational Tips	24
Bluetooth Phone Operation	23
Bluetooth Phone Pairing	23
Multimedia with Navigation Operation	30
Rear USB Outlet	41
Steering Wheel Audio Control	23
USB Port	41
Voice Recognition Tips	25
Wireless charging pad	42





**DRIVING**

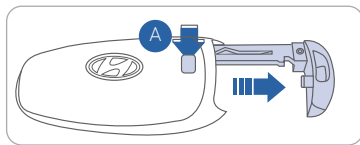
Automatic Transmission	43
Blind-Spot Collision-Avoidance Assist (BCA)	46
Digital Key Pairing	57
Driver Attention Warning System	53
Drive Mode	51
Electric Parking Brake (EPB)	56
Forward Collision-Avoidance Assist (FCA)	45
Idle Stop and Go (ISG)	50
Lane Following Assist (LFA)	45
Lane Keeping Assist (LKA)	44
Leading vehicle departure alert	55
Near Field Communication (NFC)	58
Rear Cross-Traffic Collision-Avoidance Assist (RCCA)	47
Rear Occupant Alert (ROA)	49
Safe Exit Warning (SEW)	48
Smart Cruise Control(SCC)	54
Surround View Monitor (SVM)	55
Tire Pressure Monitoring System (TPMS)	52

\* Some vehicles may not be equipped with all the listed features.

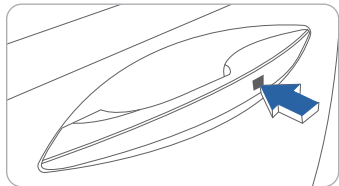
## SMART KEY



-  **Lock**
-  **Unlock**
-  **Liftgate Unlock/Open**  
(Press and hold. Liftgate will open if equipped with Power Liftgate.)
-  **Panic (press and hold)**

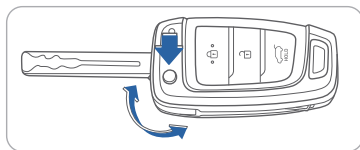


**Removing the mechanical key**  
Slide and hold the release button **A** to remove the mechanical key.



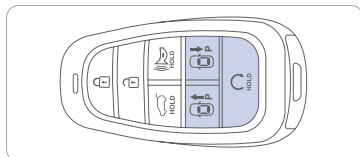
**Driver's door Lock / Unlock**  
Smart key must be within 28~40in. from the outside door handle.  
**Press:** Once - Unlock driver door  
Twice - Unlock all doors  
Third - Lock all doors



**NOTE:** User selectable option : Please see section 3 from Owner's Manual for more details.



To unfold the mechanical key, press the release button on the remote.

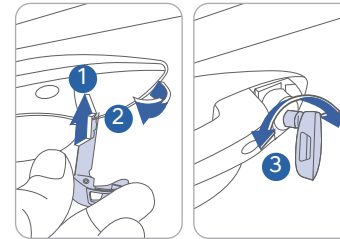
## Remote Smart Parking Assist button



-  **Forward button**
-  **Backward button**

When using the Remote Forward/ Backward function, the vehicle moves in the direction of the button while the button is pressed.

## DOOR LOCKS



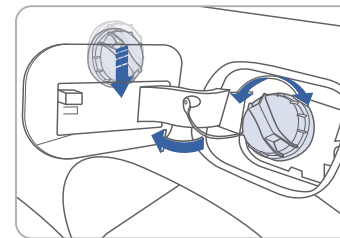
### To access the key hole:

If the smart key is not working properly, there is an alternative way to unlock the doors through the keyhole on the driver's door.

1. Pull open the driver's door handle **1**
2. While holding the door handle open, use mechanical key to release the clip **2** behind the door handle.
3. Remove the key hole cover **3**

After removing the cover, turn the key toward the front of the vehicle to unlock and toward the rear of the vehicle to lock. Once the door is unlocked it may be opened by pulling the handle.

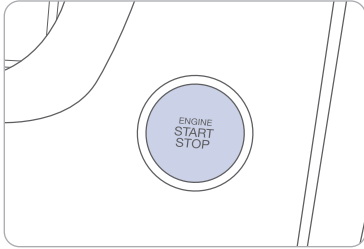
## FUEL FILLER DOOR



To open fuel filler door:  
Turn engine off and unlock driver door.  
Push the fuel filler door in.  
Pull the fuel filler door outward to access the fuel tank cap.

**NOTE:** The fuel filler door will lock when all doors are locked.

## ENGINE START / STOP BUTTON



With the ignition OFF and foot OFF of the brake pedal, press the Engine Start / Stop button.

- Once for ACC (Accessory) mode.
- Twice for ON mode.
- Third for OFF.

To start the engine in any mode (including OFF), press the Engine Start / Stop button while pressing down on the brake pedal. To shut the engine OFF, place the shift lever in P (Park) and press the Engine Start / Stop button again.

### Emergency Situations

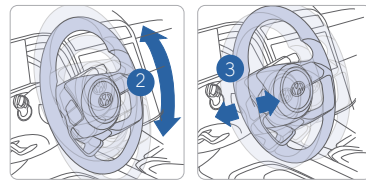
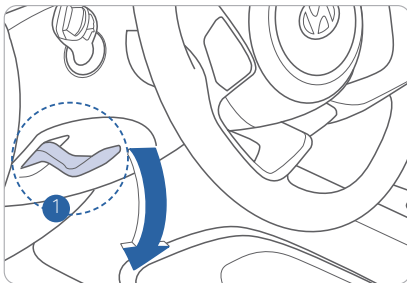
#### Shutting Off the Engine while Driving

- Press the engine Start / Stop button for 2 seconds or more or 3 times consecutively within 3 seconds.

#### Restarting the Engine while Driving

- Press the engine Start / Stop button with the shift lever in N (Neutral).

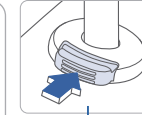
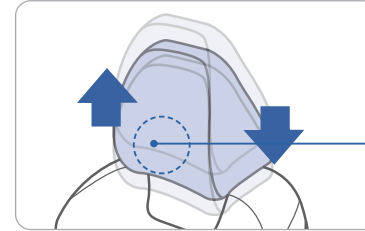
## STEERING WHEEL ADJUSTMENT



**NOTE :** Do not adjust while driving.

1. Pull the ① lever down.
2. Set the ② angle and ③ distance.
3. Pull the ① lever up to lock position.

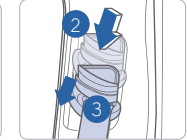
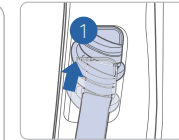
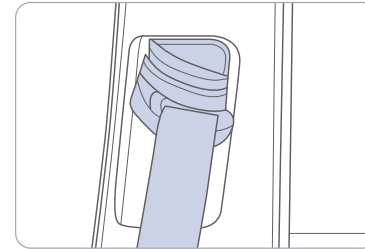
## HEADREST ADJUSTMENT



To Raise the Headrest:  
Pull the headrest up.

To Lower the Headrest:  
Press the lock button while pressing down on the headrest.

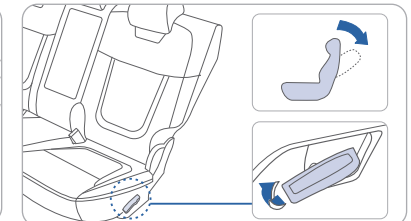
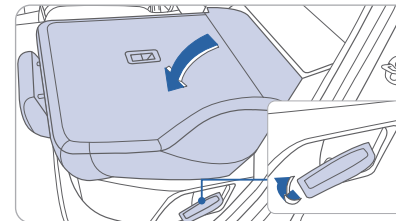
## SEAT BELT ADJUSTMENT (front seat)



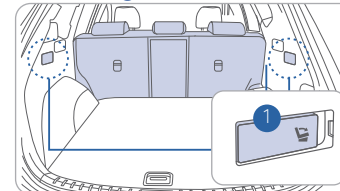
Pull up to raise. Press the button and push down to lower.

## REAR SEAT FOLDING

### 2<sup>nd</sup> row seat



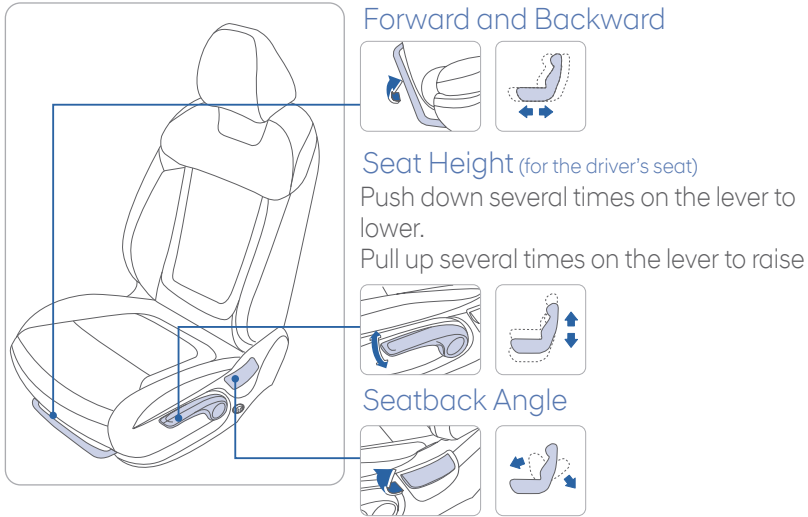
### From cargo area



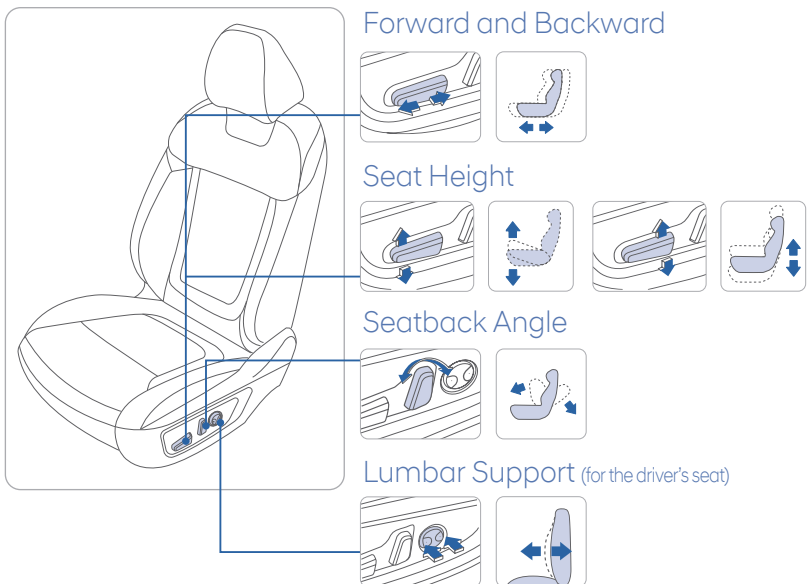
To fold the rear seats from the cargo area, push the 2nd row seat back folding switch ① located on both sides of the tailgate.

L: Left seatback folding  
R: Right seatback folding

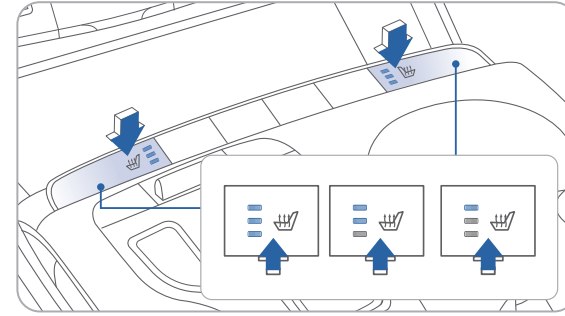
## FRONT SEAT ADJUSTMENT (manual)



## FRONT SEAT ADJUSTMENT (power)



## HEATED FRONT SEATS

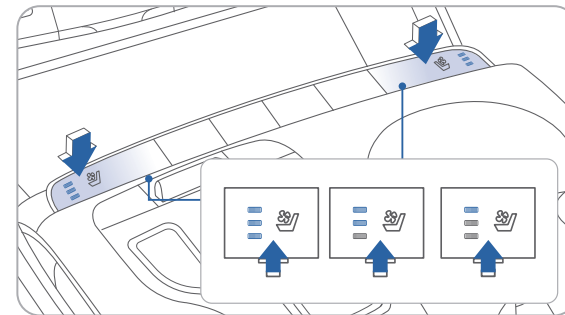


Each time you press the button, the setting is changed as follows:

**OFF** → **HIGH** → **MEDIUM** → **LOW**

↑

## VENTILATED FRONT SEATS



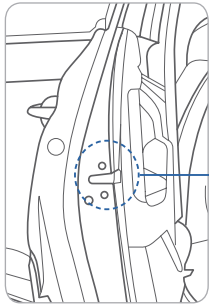
Each time you press the button, the setting is changed as follows:

**OFF** → **HIGH** → **MEDIUM** → **LOW**

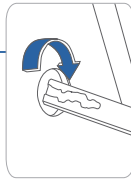
↑

Use with A/C  on and Bi-Level mode  for effective ventilation.

## CHILD-PROTECTOR REAR DOOR LOCK

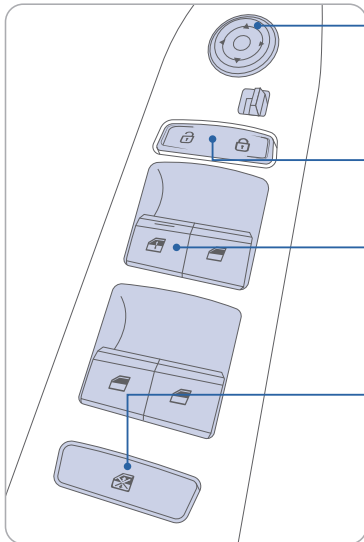


**Lock**  
Insert a key into the hole and turn it to the lock position.



**Unlock**  
Insert a key into the hole and turn clockwise to the unlock position.

## DRIVER'S MAIN CONTROLS



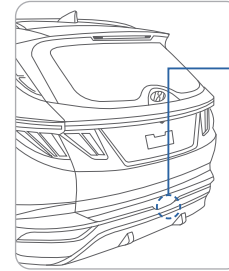
**Outside Rearview Mirrors**  
Press L (left) or R (right) on the switch. Adjust the mirror by using the mirror adjustment control switch.

**Door Lock**  
Locks / unlocks all doors and tailgate.

**Window Auto Up / Down (if equipped)**  
Press past detent to fully open / close the window.

**Power Window Lock Switch**  
Disables the power window switches on the rear passenger doors.

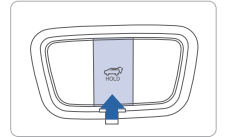
## POWER LIFTGATE OPERATION



Press to open. Smart key must be within the range.

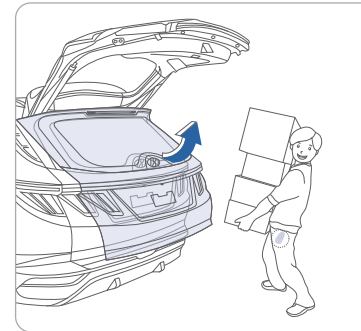


Press for about 1 second to open. Press and hold to close.



Car must be in Park (P). Press for about 1 second to open. Press and hold to close.

## HANDS FREE SMART LIFTGATE



On vehicles equipped with Smart Liftgate, the liftgate can be opened with no-touch activation.

### To activate

To enable Smart Liftgate, go to User Settings mode on the LCD display, or Setup, then Vehicle on the Navigation display and under the Door menu make sure the Power Liftgate and Smart Liftgate boxes are checked.

### Power Liftgate Opening Height

For your convenience, there are four levels to adjust the liftgate opening height. These can be selected in the User Settings menu.

1. Select User Settings from the LCD Display, or Setup - Vehicle from the Navigation screen.
2. Select Door Menu, then Power Liftgate Opening Height
3. Choose between Level 1 ~ 3 or Full Open

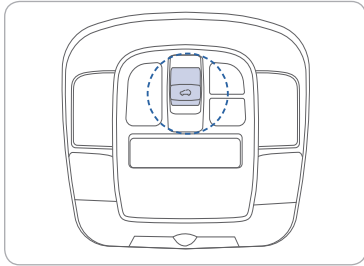
### Hands Free Smart Liftgate Operation

The liftgate can be opened with no-touch activation after the below conditions are met:

- After 15 seconds from when all doors are closed and locked
- You approach the rear of the vehicle (liftgate area) for at least 3 seconds with the Smart Key in your possession

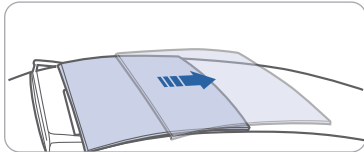
## PANORAMIC SUNROOF

### Sunshade

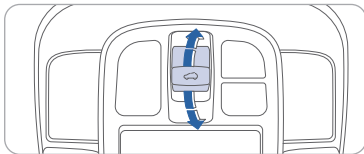


To open the sunshade, pull the sunroof control switch rearward to the first detent position. To close the sunshade when the sunroof glass is closed, push the sunroof control switch forward.

### Sliding the Sunroof

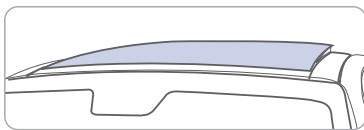


Pull the sunroof control switch backward to the second detent position. First the sunshade will open and then the sunroof will open automatically.

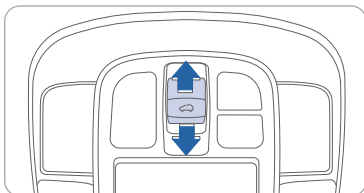


Push the sunroof control switch forward to the first detent position to close the sunroof. Push the sunroof control switch to the second detent position to close both the sunroof and the sunshade automatically.

### Tilting the Sunroof

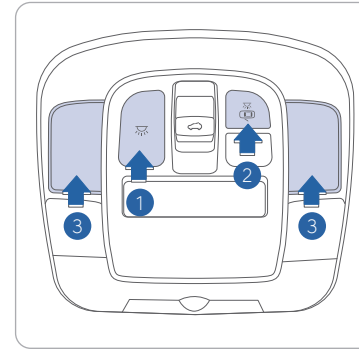


**Open**  
Push the sunroof control switch upward to tilt the sunroof.



**Close**  
Push it upward again to close the sunroof. You can also push the sunroof control switch forward to close the sunroof. Push it forward to the second detent position to close the sunroof and the sunshade.

## INTERIOR LIGHTS



### Master Switch 1

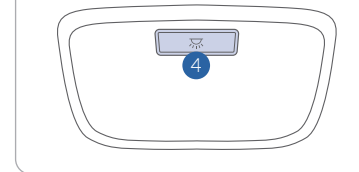
Push the switch to turn the map lamp 3 and room lamp 4 on or off.

When the Master Switch 1 is pushed, the other switches 3, 4 do not operate.

### Door Mode Switch ( ) 2

When the Door Mode Switch 2 is pushed, map lamp 3 and room lamp 4 turn on if any door is opened and will turn off after all doors are closed.

### Room Lamp (Rear)



### Map Lamp (Lens Switch) 3

Press the lens to turn on and off for each side of map lamp.

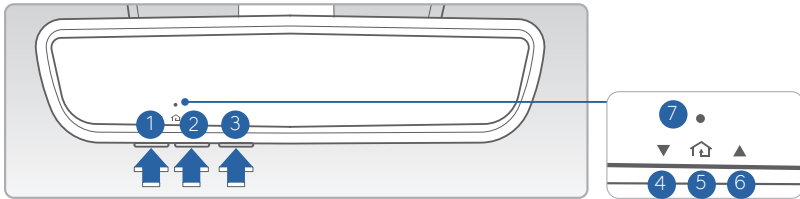
### Room Lamp Switch ( ) 4

Press the switch to turn on and off the room lamp.

When this switch is pushed, master switch can't control room lamp



## HOMELINK WIRELESS GARAGE CONTROL SYSTEM

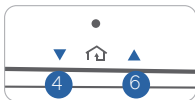


1. Press and release ①, ② or ③ button.
  - If the indicator ⑦ is turned ON in Orange, go to Step 3 (programming mode)
  - If the indicator ⑦ is continuously turned ON or flashes in Green rapidly several times, go to Step 2 (erasing mode)
2. Press and hold the button you wish to program for approximately 15- 25 seconds until the LED flashes in Orange for several times.
3. Hold the Garage Door Opener Original Transmitter near the HomeLink Mirror.
4. Press the Original Transmitter button until the indicator ⑦ is turned continuously ON or flashes in Green for approximately 10 seconds and it indicates the programing is completed.

**NOTE:** If the indicator ⑦ flashes in Green continuously, but if the garage door opener does not operate, please continue to follow Rolling Code Programming steps below.

### Two Way Communication

Some new garage door openers come equipped with a two-way communication feature. If your garage door opener has this feature, please also continue to follow the Rolling Code Programming steps below. For more information and programming tips on two-way communication please visit [www.homelink.com/compatible/two-waycommunication](http://www.homelink.com/compatible/two-waycommunication) or call (800)-355-3515.

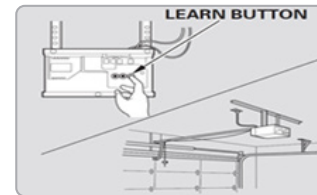


Indicator ④ & ⑥:  
 Flashes in orange → “Closing” & “Opening”  
 Solid Green → “Closed” & “Opened”

**NOTE:** If your garage door opener has Two-Way Communication functionality, it is possible for HomeLink to stop functioning the garage door shortly after initial programming, if the Two-Way Communication Programming wasn't properly completed. If you experience this, completing the “Programming a New HomeLink Button” and “Two-Way Communication Programming” will restore door operation.

### Rolling Code Programming

- You may need a ladder to access your garage door opener.
  - You may need help from a second person.
  - Be prepared some of the steps are time sensitive.
1. Firmly press and release the “Learn”, Smart”, or “ Program” button of garage door opener on the ceiling while the indicator ⑦ flashes in Green. Once the button is pressed, you have approximately 30 seconds to initiate the next step.

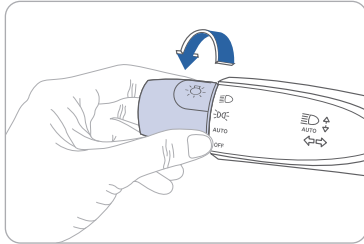


2. Return to the vehicle and firmly press the HomeLink button, hold for two seconds and release the button up to three times. Do not press the HomeLink button rapidly. At this point programming is complete and your device should operate.

For more detailed information, please refer to your Owner's manual or visit [www.homelink.com](http://www.homelink.com) or call (800) 355-3515



## HEADLIGHTS

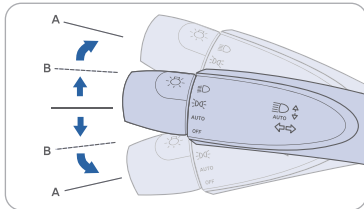


- Headlights
- Parking Lights
- AUTO** Auto Lights
- OFF** All Lights Off

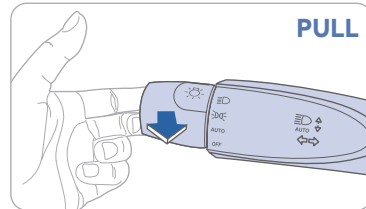
### Headlights Delay

Headlights may stay on for 15 seconds after exiting and locking up the vehicle. Press the remote lock button twice to turn the headlights off. Please refer to your Owner's Manual for further information.

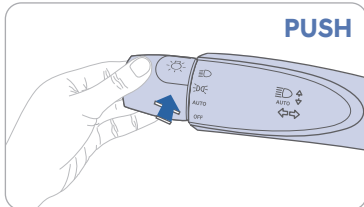
### Turn Signals and Lane Change Signals



### Flashing the Headlights



### High Beams

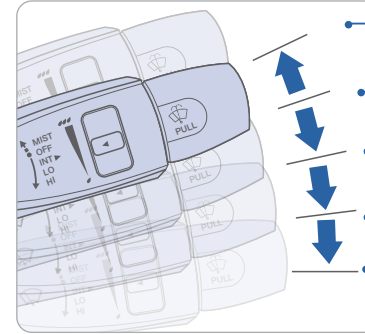


To turn on the high beams, push the lever away from you. The lever will return to its original position and the high beam indicator in the cluster will illuminate.

To turn the high beams off, pull the lever towards you.

To flash the high beams, pull the lever towards you, then release the lever. The high beams will remain ON as long as you hold the lever towards you.

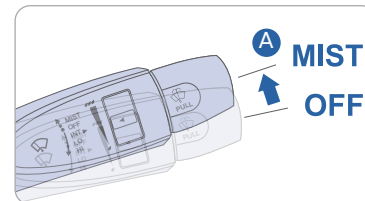
## WIPER AND WASHER



- MIST** - Single wipe
- OFF** - Off
- INT** - Intermittent wipe
- LO** - Low wiper speed
- HI** - High wiper speed

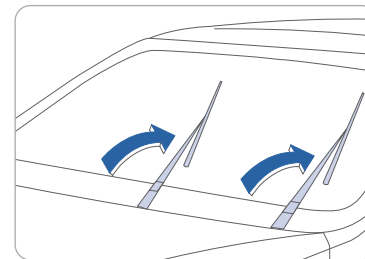
**NOTE:** The rear wiper is controlled by the knob at the end of the wiper stalk. Turn the knob forward one stop for low wipe speed and two stops for high wipe speed.

## WIPER BLADES



This vehicle has a "hidden" wiper design which means they cannot be lifted in their bottom resting position

### Wiper Blade Removal

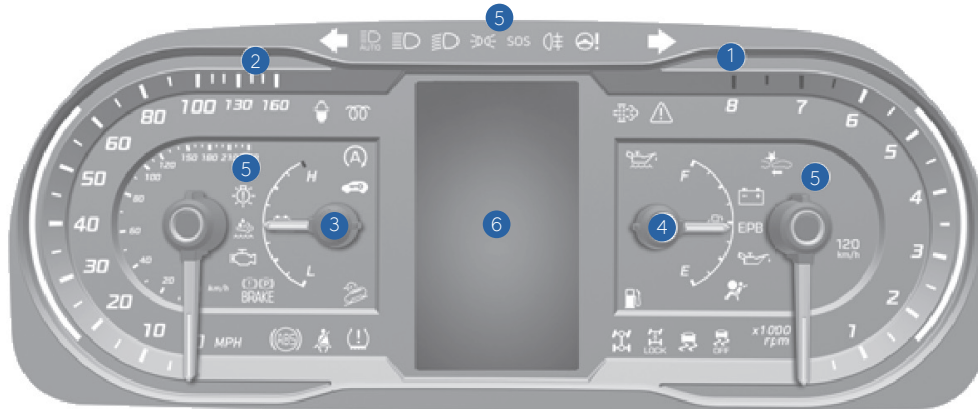


1. Within 20 seconds of turning off the engine, lift and hold the wiper lever up to the MIST **A** position for about 2 seconds until the wipers move to the top wipe position.
2. At this position, you are able to lift the wipers off the windshield.
3. Gently put wipers back down onto windshield.
4. Turn the wipers to any ON position to return to resting position.

**NOTE:** To prevent damage to the hood and wiper arms, the wiper arms should only be lifted when in the top wiping position.

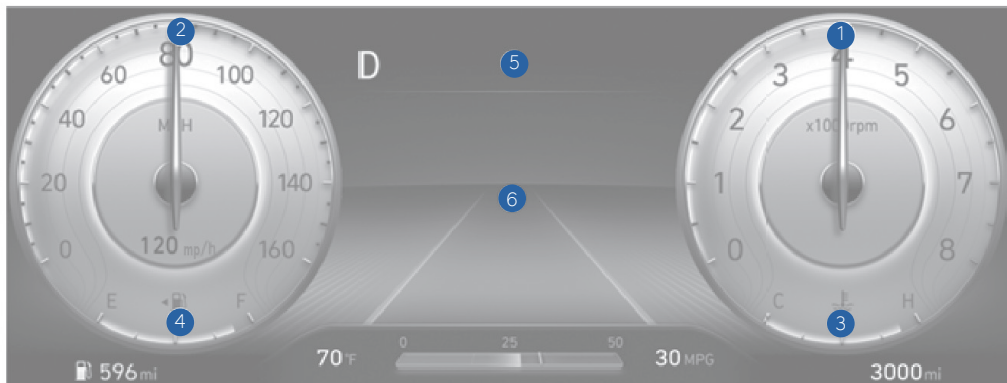
## INSTRUMENT CLUSTER

### Type A



1. Tachometer
2. Speedometer
3. Engine Coolant Temperature Gauge
4. Fuel Gauge
5. Warning and Indicator Lights
6. LCD Display (Including Trip Computer)

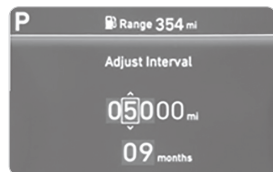
### Type B



## LCD DISPLAY MODES

Modes	Symbol	Description
Trip Computer		Displays the most recent driving information including average fuel economy, trip, odometer, average speed, etc.
Turn BY Turn (TBT)		Displays turn-by-turn directions in the LCD cluster with navigation.
Driver Assist		Displays Smart Cruise, Lane Keep Assist, Driver Attention Warning, FWD/AWD Traction Force, Tire Pressure.
Information		Displays the service interval and warning messages.
User Settings		Select options for settings including door lock/unlock features, driver assistance features, and others.

## SERVICE INTERVAL REMINDER SYSTEM



This system is designed to notify you of your next vehicle maintenance interval.

To Activate:

Press the (Mode) button on steering wheel and navigate to user settings and select the following:

Service Interval > Enable Service Interval > Set/Adjust Interval.

## INSTRUMENT PANEL ILLUMINATION

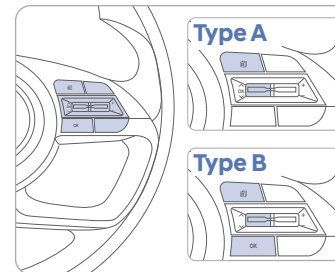


Press + or - to adjust the illumination brightness of the instrument cluster.

## WARNINGS AND INDICATORS

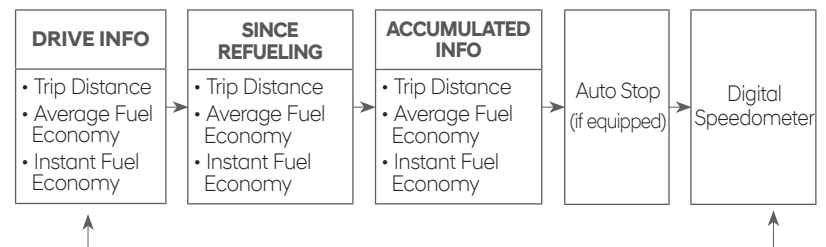
Airbag warning light	Seat belt warning light	Parking brake & Brake fluid warning light
ABS warning light	Electronic Brake force Distribution (EBD) System warning light	
Electric Power Steering (EPS) warning light	Malfunction Indicator Lamp (MIL)	Charging system warning light
Engine coolant temperature warning light	Engine oil pressure warning light	Low fuel level warning light
Low Tire Pressure Warning Light/TPMS system malfunction light	Electronic Stability Control (ESC) indicator	Electronic Stability Control (ESC) OFF indicator
AWD warning light	Immobilizer indicator	Turn signal indicator
High beam indicator	Light ON indicator	AUTO HOLD indicator Light
AWD LOCK indicator	High Beam Assist	SET Cruise SET indicator
Downhill Brake Control (DBC) indicator	Forward Safety Warning Light	EPB Electric Parking Brake (EPB) warning light

## TRIP COMPUTER

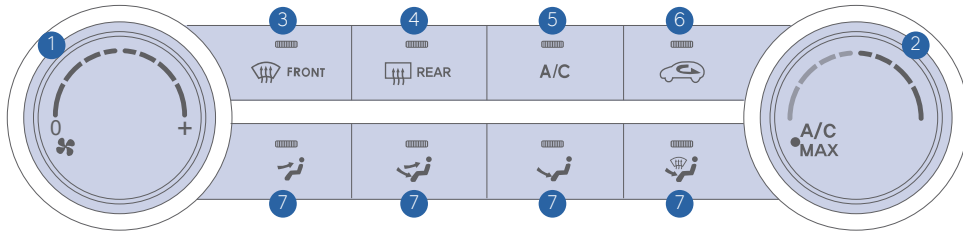


- : VIEW MODE button for changing modes.
- : MOVE switch up and down to change selected item.
- : PUSH switch for setting or resetting the selected item.

To change the trip mode as follows, press the MOVE button .



## MANUAL CLIMATE CONTROL

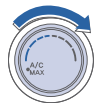


1. Fan speed control knob
2. Temperature control knob
3. Front windshield defroster button
4. Rear window defroster button
5. A/C (air conditioning) button
6. Air intake control button
7. Mode selection buttons

### DEFROSTING / DEFOGGING



1. Press the front windshield defroster button.



2. Set the temperature control to the warmest setting.



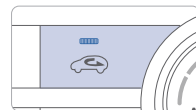
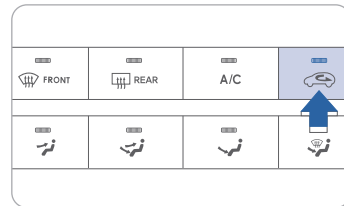
3. Set the fan speed to the medium setting.

#### NOTE:

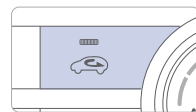
To reduce the tendency of the glass to fog up and also to improve visibility, keep the surface of the windshield clean by wiping it occasionally with glass cleaner and a clean cloth.

In addition, select air intake control to the outside (fresh) air position whenever possible while operating the vehicle.

### AIR INTAKE CONTROL

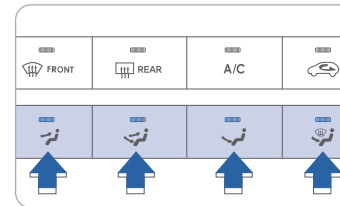


Recirculated air position (indicator ON)



Outside (fresh) air position (indicator OFF)

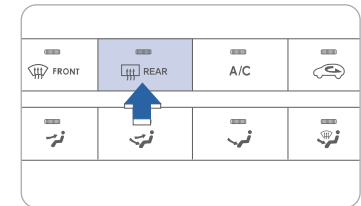
### MODE SELECTION



Changes the direction of the air flow as following:

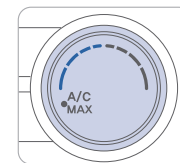
- Face Level
- Bi-Level
- Floor Level
- Floor / Defrost Level

### REAR WINDOW DEFROSTER



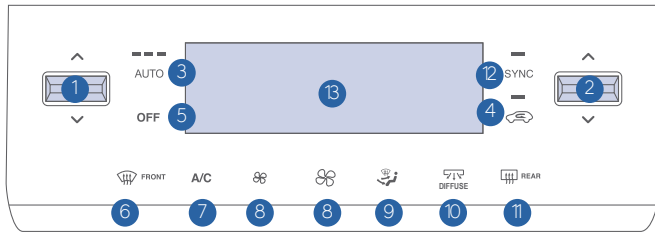
Press to activate / deactivate the rear defroster.

### MAX A/C MODE



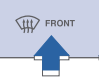
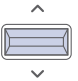

The MAX A/C automatically selects the A/C, recirculated air, and face level vents. This helps to cool the cabin down more quickly. Select normal A/C after initial cool down to resume fresh airflow and maintain efficiency.

## AUTOMATIC CLIMATE CONTROL



- 1 Driver's temperature control switch or touch button
- 2 Passenger's temperature control switch or touch button
- 3 AUTO (automatic control) touch button
- 4 Air intake control touch button
- 5 OFF touch button
- 6 Front windshield defroster touch button
- 7 A/C (air conditioning) touch button
- 8 Fan Speed Control touch button
- 9 Mode selection touch button
- 10 Multi Air Mode touch button
- 11 Rear window defroster touch button
- 12 SYNC touch button
- 13 Climate control information screen

### DEFROSTING / DEFOGGING

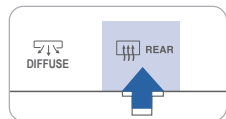
1. Press the front windshield defroster button.
 
2. Set the temperature control to the warmest setting.
 
3. Set the fan speed to the medium setting.
 

### SYSTEM OFF MODE

Pressing the OFF button will turn the automatic climate control system off.

- The fan will turn off.
- The outside (fresh) air position will be selected.
- The vented air temperature will be at the last temperature setting.

### REAR WINDOW DEFROSTER

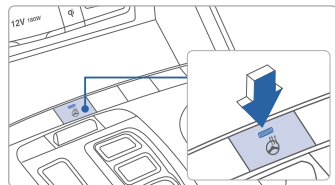


Press to activate/deactivate the rear defroster.

NOTE: To reduce the tendency of the glass to fog up and also to improve visibility, keep the surface of the windshield clean by wiping it occasionally with glass cleaner and a clean cloth.


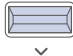
In addition, select air intake control to the outside (fresh) air position whenever possible while operating the vehicle.

### HEATED STEERING WHEEL BUTTON



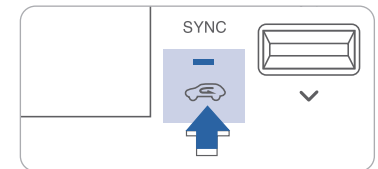
Press the heated steering wheel button to warm the steering wheel. The indicator on the button will illuminate. Press the button again to turn the heated steering wheel off.




### AUTOMATIC HEATING AND COOLING

1. Press the AUTO button.
 
2. Set the temperature control to the desired setting.
 

The modes, fan speeds, air intake and air conditioning will be controlled automatically according to the temperature setting.

### AIR INTAKE CONTROL




-  Recirculated air position (indicator ON)
-  Outside (fresh) air position (Type A) (indicator ON)
-  Outside (fresh) air position (Type B) (indicator OFF)

### SYNC BUTTON



Press the SYNC button ON to operate the driver and passenger temperature equally. Press the SYNC button OFF to operate the driver and passenger side temperature individually. The button indicator will turn off.

### MODE SELECTION

- Changes the direction of the air flow as following:
- 
- Face Level
  - Bi-Level
  - Floor Level
  - Floor & Defrost

## BLUETOOTH PHONE PAIRING

Pairing tutorials, phone compatibility and operational tips can be found through the Smart QR code using the QR reader application on your Smartphone.



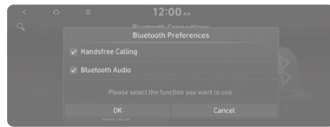
## BLUETOOTH PHONE OPERATION

### Phone setup (pairing phone)

1. Turn Bluetooth® on from your mobile phone. : All Menus > Setup > Device Connections > Bluetooth > Bluetooth Connections > Add New.



2. Select the function to connect.



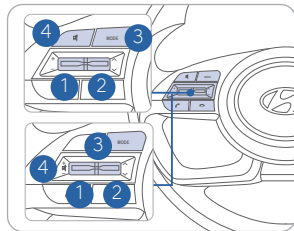
3. Turn on Bluetooth on the Bluetooth device to connect and select the vehicle system on the list of searched devices.



4. Bluetooth is connected.

**NOTE:** Vehicle must be parked to complete pairing process.

## STEERING WHEEL AUDIO CONTROL



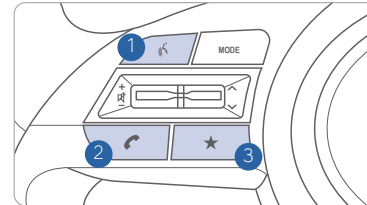
- 1 **VOLUME**  
Raises or lowers the speaker volume. Press to Mute.
- 2 **SEEK / PRESET**  
Changes the station.
- 3 **MODE**  
Changes the audio source.
- 4 **MUTE**  
Press the MUTE button to mute the sound  
Press the MUTE button again to activate the sound

## BLUETOOTH OPERATIONAL TIPS

In the following situations you or the other party may have difficulty hearing each other:

1. Keep the Bluetooth volume low. High level volume may result in distortion and echo.
2. When driving on a rough road, high speeds and/or with the window open.
3. When the air conditioning vents are facing the microphone and/or when the air conditioning fan is at the max speed.

### Steering wheel bluetooth control



- 1 **VOICE RECOGNITION**  
Activates voice recognition of a connected smartphone via phone projection. Activates system voice recognition on vehicles equipped with navigation.

- 2 **CALL/ANSWER/CALL END**  
Answer a call or end a call. Press and hold to reject an incoming call.

- 3 **CUSTOM**  
Use a custom function.  
Press and hold to access the Custom Button settings screen.

#### To Answer a Call:

- Press the button on the steering wheel.

#### To Reject a Call:

- Press the button on the steering wheel.

#### To Adjust Ring Volume:

- Use the VOLUME buttons on the steering wheel.

#### To Transfer a Call to the handset (private mode):

- Press and hold the button on the steering wheel until the audio system transfers a call to the phone.

#### To Finish a Call:

- Press the button on the steering wheel.


### Making a call using voice recognition:

Use your smartphone's functions, such as calling and messaging, from the [push to talk] button.

On vehicles equipped with navigation, use the [push to talk] button to activate the system voice recognition.

The menu tree identifies available voice recognition Bluetooth® functions.

#### Calling by Name:

1. Press the  button.
2. Say the following command:
  - "Call <John>": Connects the call to John.
  - "Call <John> <on Mobile / at Work / at Home >": Connects the call to John's Mobile, Home, or at Work phone number.

#### Dialing by Number:

1. Press the  button.
2. Say "Dial Number".
3. Say the desired phone number.

For the complete list of commands, please refer to your Owner's Manual.

## VOICE RECOGNITION TIPS

Your vehicle may be equipped with a Voice Recognition technology which allows drivers to operate their phones without having to take their eyes off of the road to minimize distractions.

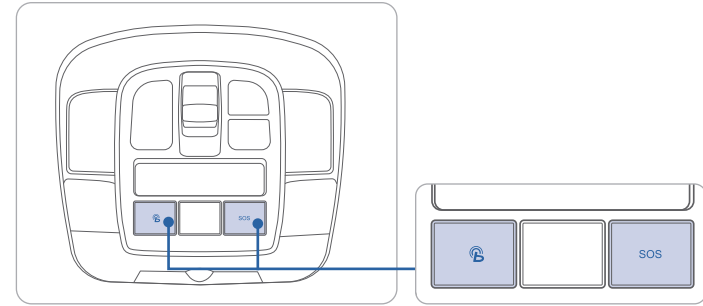
Voice recognition performance may be affected if driving with windows and sunroof open; when the heating-cooling system is on; when passing in a tunnel or when driving on rugged and uneven roads.

Quick reference on using voice commands:

To start a voice command, press the  button, the following commands are available:

Command	Function
More Help	Provides guidance on commands that can be used anywhere in the system.
Help	Provides guidance on commands that can be used within the current mode.
Calls <Name>	Calls <Name> saved in Contacts. Ex) Call "John"
Dial <Number>	Call can be made by dialing the spoken numbers. Ex) Call "123"
Phone	Provides guidance on Phone related commands. After saying this command, say "Call History", "Contacts" to execute the corresponding functions.
Contacts (Call by Name)	Displays the Contacts screen. After saying this command, say the name of a contact saved in the Contacts to automatically connect a call.
Dial Number	Displays the Dial number screen. After saying this command, you can say the number which you want to call.

## BLUE LINK TELEMATICS SYSTEM



Press the  button for access to the voice-response menu of services.

You can say:

- "Service Link" to schedule a service appointment.
- "Roadside Assistance" for roadside services.
- "Blue Link Account Assistance" for help with your Blue Link subscription.
- Press the **SOS** button for SOS Emergency Assistance.
- Refer to your Blue Link User's Manual for detailed information on system operation.
- For immediate assistance with subscription services, please call 1-855-2BLUELINK (1-855-225-8354).

**NOTE:** \*Remote Start is only available for Push Button Start equipped vehicles with an Automatic Transmission or a Dual Clutch Transmission (DCT).



## Remote Start

### Remote Start



You can download the Blue Link mobile app to your compatible smart phone from the following sites:

- iPhone® — Apple® App Store
- Android® — Google Play

Remote Start enables you to remotely start your vehicle from virtually anywhere. For navigation vehicles, you can also enable climate control remotely and turn on the rear-window defroster, ensuring a warm or cool car is ready to go when you are.

- To use this feature, you must have a Blue Link Personal Identification Number (PIN). To create or change your PIN, log on to [www.MyHyundai.com](http://www.MyHyundai.com).

### Remember:

- Remote Start with Climate Control will automatically shut off after 10 minutes or after selected engine timer runs out in navigation vehicles.
- While this feature is active, the parking lights will blink until vehicle is turned off or when vehicle is in operation.
- To continue operation of the vehicle, the proximity key must be inside the vehicle with the driver prior to pressing the brake and being able to move the gearshift from the P (Park) position.

**NOTE:** Remote Vehicle Start is only available for Push Button Start equipped vehicles with an Automatic Transmission or a Dual Clutch Transmission (DCT).

### Preconditions:

- Ignition is OFF
- Alarm is armed (i.e., vehicle locked by key fob Remote Door Lock)
- Gearshift level is in the P (Park) position
- Brake pedal is not depressed
- Engine hood is securely closed
- All the doors are closed and locked
- The tailgate or trunk lid is closed
- The security/panic system is not activated
- The battery power is not low
- Vehicle is located in an open area
- It has been less than 4 days since last vehicle ignition off
- Vehicle located in area with good cell reception

### Remote Start will terminate:

- After 10 minutes or after selected engine timer runs out in navigation vehicles
- Brake is pressed without proximity key inside vehicle
- Alarm is triggered without proximity key inside vehicle
- Door/trunk is opened from inside the vehicle

Notice: Laws in some communities may restrict the use of the features that remotely start the engine. For example, some laws may require a person using the remote start feature to have the vehicle in view when doing so or limit the length of time a vehicle engine may idle. Please check local and state regulations for any requirements and restrictions on remote starting of vehicles and engine idling time.

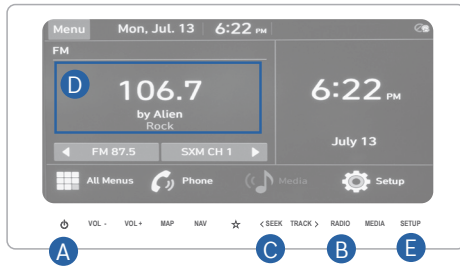
**WARNING!**

Do not remote start vehicle in an enclosed environment (i.e., closed garage). Prolonged operation of a motor vehicle in an enclosed environment can cause a harmful build-up of carbon monoxide. Carbon monoxide is harmful to your health. Exposure to high levels of carbon monoxide can cause headaches, dizziness or in extreme cases unconsciousness and/or death. Do not leave children or animals unattended in a vehicle while using the remote start function.

**CAUTION!**

If the vehicle's windshield wipers are left on when the vehicle was last driven, then the wipers will turn on if the remote start function is activated. To avoid damage to the wiper blades (i.e., due to heavy ice or snow accumulated on the windshield), please always turn the vehicle's windshield wipers off when parking the vehicle.

## AUDIO OPERATION



Press POWER button **A** to turn radio on.

### • TUNING/LISTENING TO CHANNELS

1. Press the RADIO button **B**.
2. Press the search backward button SEEK **C** or the search forward button TRACK to desired channel.

**NOTE:** A clear view of the southern sky is recommended to ensure SXM<sup>®</sup> radio reception.

### • SETTING PRESET MEMORY BUTTONS (FM/AM/SXM<sup>®</sup>)

Press and hold any preset button **D** until an audible beep is heard to store current channel.

### • ADJUSTING THE SOUND CONTROL

1. Press SETUP button **E**.
2. Select Sound button on screen.
3. Touch on-screen arrows to adjust desired setting.

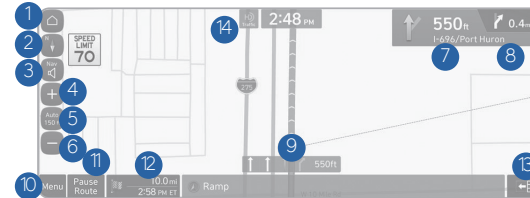


### NOTE:

1. Users can set the volume level of each source (FM, AM, SXM, USB, BT and etc.) : individually by adjusting the volume UP and DOWN buttons.
2. When the volume of a source is adjusted to the desired level, it will be automatically saved at that setting. Thus, when the user changes source and reverts back, the volume will be set at the last desired level.

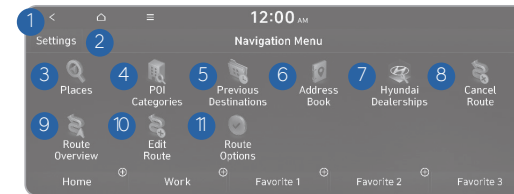
## MULTIMEDIA WITH NAVIGATION OPERATION

Basic features on the map screen



- 1 Displays the Home screen.
- 2 Used to change the map display mode.
- 3 You can adjust the volume of navigation or GPS warning sound.
- 4 Zooms in the map.
- 5 The scale of the map automatically changes.
- 6 Zooms out the map.
- 7 Displays the point to change the driving direction.
- 8 Displays the next point to change the driving direction.
- 9 Displays the lanes in different colors.
- 10 Displays quick menu items that can be used during guidance.
- 11 Can pause or cancel the route guidance. > See "Stopping the route guidance."
- 12 Displays the remaining distance to the destination and the estimated time of arrival.
- 13 Displays or hides the detailed guidance.
- 14 Displays the system information on the map.

### Destination search screen



Press [NAV] button in the navigation head unit, and finds a destination by using the [Destination] menu.

- 1 Returns to the previous step.
- 2 You can change the Navigation-related settings.
- 3 Search for a location by entering various types of keywords such as place name and address.
- 4 Search for POIs by category to set as a destination.
- 5 Select any of previous destinations to set as a destination.
- 6 Register the location or use the address book for setting a destination.
- 7 You can easily search for Hyundai Dealerships.
- 8 You can cancel guidance to the destination.
- 9 You can see the entire route information to the destination.
- 10 You can edit the current route so that you can travel via waypoints on the way to the destination.
- 11 You can change the route search criteria to resume routing

## ANDROID AUTO™

### REQUIREMENTS:

- Micro USB cable
- OS Android™ 5.0 or higher
- Compatible Android Phone
- Data and wireless plan for applicable features

### BEFORE YOU BEGIN:

- Android Auto features may operate differently than on your phone.
- Message and data charges may apply when using Android Auto.
- Android Auto relies on the performance of your phone. If you experience performance issues:
  - Close all apps and then restart them or
  - Disconnect and then reconnect your phone
- Using the micro USB cable that was provided with your phone is recommended.

### ANDROID AUTO SUPPORT



<https://support.google.com/androidauto/>

## PHONE SETUP

Turn on Bluetooth® on your phone and connect the micro USB cable to your phone and the USB port on the vehicle.

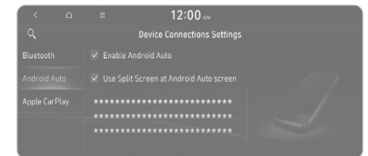
Phone will prompt you to download the Android Auto app and update other needed apps (e.g. Google Maps™, Google Play Music™, Google Now™).

**NOTE:** Vehicle must be parked.

- Location mode setting should be set to High accuracy.
- Car and phone setup should be completed in one sitting. If phone setup needs to be resumed, recommend to Force Stop the Android Auto app on the Phone then reopen the app and accept the Disclaimer notifications.

## CAR SETUP

1. Press the SETUP button on the radio.
2. Touch the “Device Connections” icon on screen.
3. Select Android Auto
4. Select Enable Android Auto
5. Connect your Android phone to the vehicle USB port. Agree to the notification and disclaimers on your phone then the “Android Auto” icon will appear confirming the setup.



For more detailed information on how to operate Android Auto, please refer to your display audio or navigation manual.

For additional Android Auto support, please refer to the Android Auto Support Website  
<https://support.google.com/androidauto/>

Android Auto, Google Play, Android, and other marks are trademarks of Google Inc.

## ANDROID AUTO™ WIRELESS (IF EQUIPPED)

### REQUIREMENTS:

- Compatible Android Phone that supports Android Auto Wireless
- Data and wireless plan for applicable features
- Bluetooth & Wifi must be enabled

### BEFORE YOU BEGIN:

- Android Auto can be set up and utilized with both the Wi-Fi and USB Chord
- Refer to previous page for more details

## PHONE SETUP

- Turn on Bluetooth and Wifi on your phone
- Download Android Auto App, and update other needed apps (e.g. Google Maps, Google Play Music, Google Now)

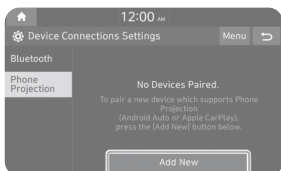
## CAR SETUP



### Activate Wireless Connectivity

On the Home Screen, select the following:

All Menus > Setup > Wi-Fi > **Use Wi-fi Connection**



### Pairing Smartphone With Phone Projection

On the Home Screen, select the following:

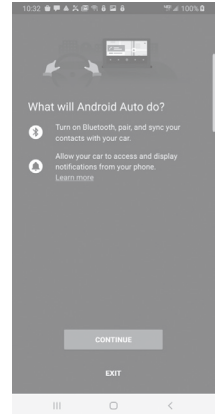
All Menus > Setup > Device Connections > Phone Projection > **Add New**

## ON YOUR SMARTPHONE

- Activate Bluetooth and Wifi
- Search for your vehicle on Bluetooth device list
- Select your Vehicle
- Confirm Bluetooth passkeys match the touch screen display
- Read and accept prompts from the touch screen display

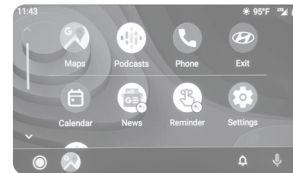
### NOTE:

If the smartphone has been added to the system's Bluetooth device list, first delete the smartphone from the Bluetooth list, and add it to the phone projection list. Smartphone will also be registered to Bluetooth after registering to Phone Projection.



### Connect to Android Auto

On the Home Screen, select the following: All Menus > Android Auto



### - REMINDERS:

- Android Auto™ compatibility requirements for connection:
  - Bluelink with Navigation (USB cable connection only)
    - : OS Android™ 5.0 or higher, phone manufacturer's USB cable and data plan with applicable feature(s)
  - Standard Audio System-Value (USB cable & wireless connection)
    - : (USB cable connection): OS Android™ 5.0 or higher, phone manufacturer's USB cable and data plan with applicable feature(s)
    - : (Wireless connection): OS Android™ 9.0 or higher with data plan for applicable feature(s)

## APPLE CARPLAY™

### REQUIREMENTS

- Apple Lightning® cable (Apple-certified cable)
- iOS software 8.0 and higher
- iPhone® 5 or above
- Data and wireless plan for applicable features

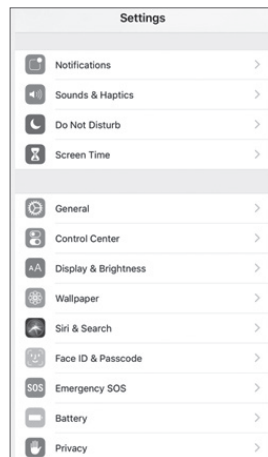
### BEFORE YOU BEGIN

- Apple® CarPlay features may operate differently than on your phone.
- Message and data charges may apply when using Apple CarPlay.
- Apple CarPlay relies on the performance of your phone. If you experience performance issues:
  - Close all apps and then restart them
  - Disconnect and then reconnect your phone
- Using the Apple Lightning cable that was provided with your phone is recommended.

### PHONE SETUP

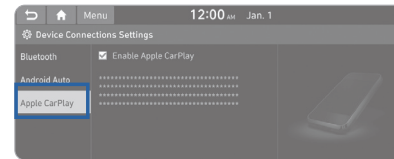
On your phone, go to Settings > General > CarPlay to allow CarPlay access.

On your phone, go to Settings > Siri and ensure Siri is turned ON.



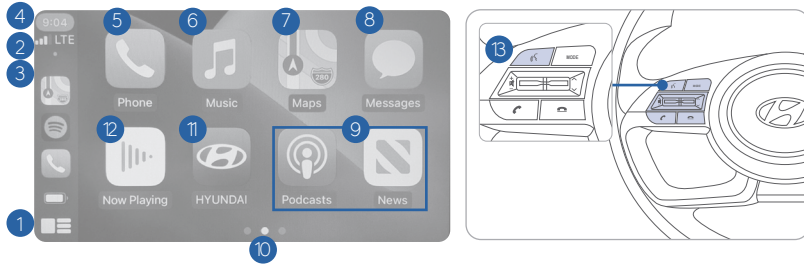
### CAR SETUP

1. Press the SETUP button.
2. Touch the “Device Connections” icon on the screen.
3. Touch Apple CarPlay.
4. Touch Enable Apple CarPlay.
5. Connect your Apple iPhone to the vehicle USB port then touch ‘OK’ when the pop-up message appears. The Apple CarPlay icon will now appear on the vehicle Home screen confirming the setup.



Apple CarPlay, Apple, and other marks are trademarks of Apple Inc.

## CarPlay Home Screen



- |                         |                                  |
|-------------------------|----------------------------------|
| 1 HOME ICON             | 7 APPLE MAPS                     |
| 2 WIRELESS CONNECTIVITY | 8 MESSAGES                       |
| 3 CELLULAR SIGNAL       | 9 3RD PARTY APPS                 |
| 4 PHONE TIME            | 10 SCREEN PAGE INDICATOR         |
| 5 PHONE                 | 11 EXIT TO HYUNDAI               |
| 6 APPLE MUSIC™          | 12 CURRENT CARPLAY AUDIO PLAYING |
|                         | 13 VOICE RECOGNITION TIPS        |

## SIRI

Apple CarPlay uses Siri to perform many actions like sending messages, placing calls, and looking up/setting POI/Destinations. A Siri session can be initiated on any screen by:

1. Touch and holding the HOME icon (1) on the CarPlay screen or
2. Press and HOLD the steering wheel VOICE RECOGNITION (13) button.

Note: Ensure Siri feature is set to ON in your phone (Go to Settings > General > Siri).

3. Say any of the following commands;
  - “Text <John Smith> ‘Call you later!’” to send a text message.
  - “Read text messages” to read available text message.
  - “Call <John Smith>” to make a phone call.
  - “Find <POI/Destination>” to locate a POI/Destination.

## PHONE

Touch the PHONE (5) icon to access the Phone screen. Siri will automatically ask ‘Who would you like to call’ when the PHONE (5) icon is selected.

NOTE: Phone call sound quality is dependent on the wired connection. Using the Lightning cable that came with the phone is recommended.

## APPLE MUSIC

Touch the APPLE MUSIC (6) icon to access the Apple Music screen.

## APPLE MAPS

Touch the APPLE MAPS (7) icon to access the Apple Map screen.

## MESSAGES

Touch the MESSAGES (8) icon to access the Message screen. Siri will automatically ask ‘To hear unread messages or create a new one’ when the MESSAGE icon is selected.

## 3rd PARTY APPS

Supported CarPlay apps that are downloaded on your phone will appear on the CarPlay screen. Touch the apps icons to access those supported apps.

NOTE: A list of the supported CarPlay supported apps can be found at <http://www.apple.com/ios/carplay/>

Ensure phone has latest version of the 3rd Party Apps.

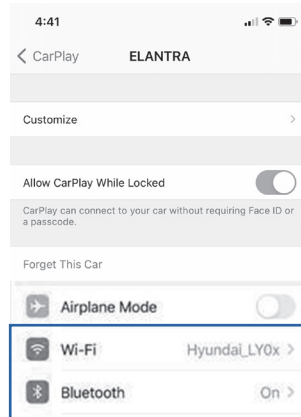
## APPLE CARPLAY™ WIRELESS (IF EQUIPPED)

### REQUIREMENTS:

- iOS software 10 and higher
- Compatible iOS Phone that supports Wireless Carplay
- Data and Wireless plan for applicable features

### BEFORE YOU BEGIN:

- Carplay is only available via Wi-Fi Phone Projection



## PHONE SETUP

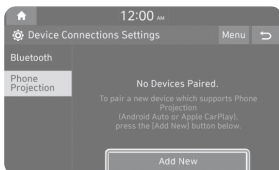
1. On your phone, go to Settings > General > Carplay to allow Carplay access.
2. On your phone, go to Settings > Siri, Wi-Fi and Bluetooth and ensure they are turned ON.

## CAR SETUP



### Activate Wireless Connectivity

On the Home Screen, select the following:  
All Menus > Setup > Wi-Fi > **Use Wi-fi Connection**

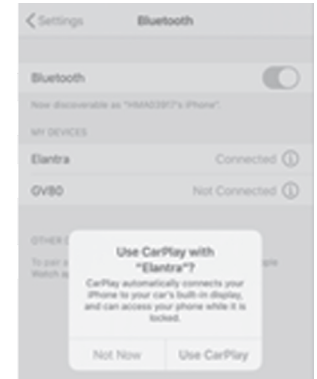


### Pairing Smartphone With Phone Projection

On the Home Screen, select the following:  
All Menus > Setup > Device Connections > Phone Projection > **Add New**

## ON YOUR SMARTPHONE

- Activate Bluetooth and Wifi
- Search for your vehicle on Bluetooth device list
- Select your Vehicle
- Confirm Bluetooth passkeys match the touch screen display
- Read and accept prompts from the touch screen display

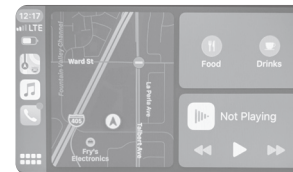


### NOTE:

If the smartphone has been added to the system's Bluetooth device list, first delete the smartphone from the Bluetooth list, and add it to the phone projection list. Smartphone will also be registered to Bluetooth after registering to Phone Projection.

### Connect to CarPlay

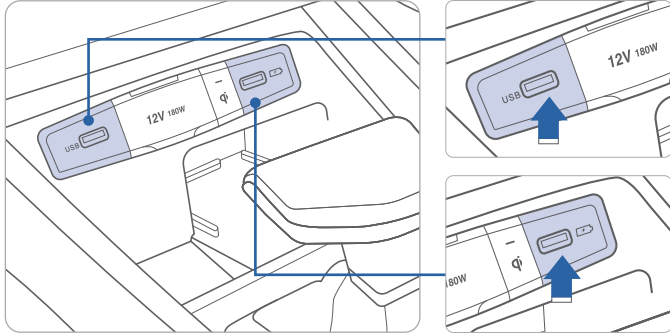
On the Home Screen, select the following: All Menus > CarPlay



### - REMINDERS:

- Apple CarPlay® compatibility requirements for connection:
  - Bluelink link with Navigation (USB cable connection only): iOS software 8.0 and higher with data plan for applicable feature(s)
  - Standard Audio System-Value (Wireless connection only): iOS software 10.0 and higher with data plan for applicable feature(s)

## USB PORT

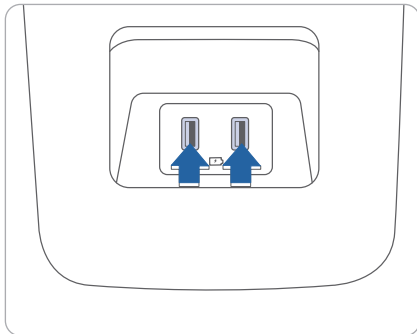


When using wireless Android Auto® or Apple CarPlay®, note that the USB port will operate as a charging port.

For vehicles equipped with navigation, use the USB port to access features on your smartphone using Apple CarPlay® or Android Auto® phone projection.

Or use either USB port to charge an external device such as a cell phone.

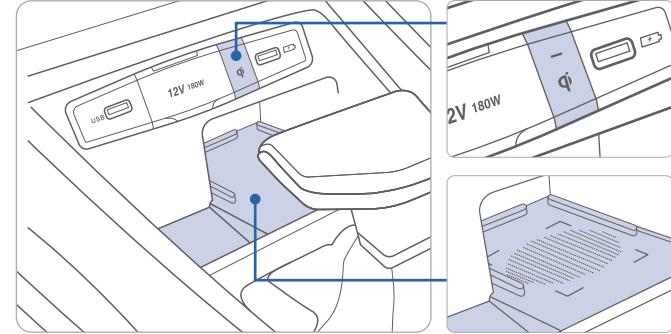
## REAR USB OUTLET



On some models, the 2nd row center console is equipped with an additional USB port that can be used for device charging.

The USB charging port is powered only when the ignition switch is ON.

## WIRELESS CHARGING PAD



There is a wireless cellular phone charging pad in the center console. The system operates with all doors closed and the ignition in the ON position.

The wireless charging must be enabled in the User Settings prior to using.

### Using the Wireless Phone Charging System

1. Place a compatible (Qi enabled) device in the charging slot in the center console with the battery facing the driver.
2. The wireless charging symbol will be shown on the upper right corner of the audio display and the Wireless charging LED will illuminate in the center console.

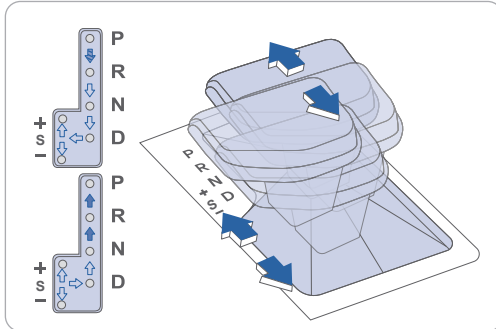
#### NOTE:

- Wireless charging systems are less efficient than conventional charging using a cable. As a result, higher device operating temperatures may be experienced during use and, thick phone cases may negatively affect charging speed and temperature.
- Do not place credit cards or other magnetic media on the pad as they could be damaged by the magnetic field. In addition, avoid placing any metallic objects near the pad as they may impede charging performance.



## AUTOMATIC TRANSMISSION

### Lever type

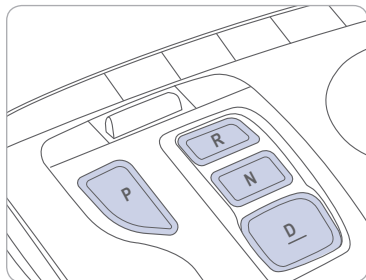


(Shift Release Button): Depress the brake pedal and press the shift release button while moving the shift lever.

(Shift Release Button): Press the shift release button while moving the shift lever.

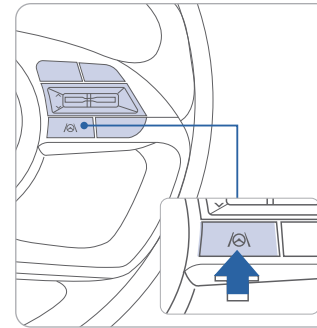
(Shift Release Button): The shift lever can freely operate.

### Push button drive selector



P (Park)  
R (Reverse)  
N (Neutral)  
D (Drive)

## LANE KEEPING ASSIST (LKA)



Lane Keeping Assist is designed to help detect lane markings (or road edges) while driving over a certain speed. The system will warn the driver if the vehicle leaves the lane without using the turn signal, or will automatically assist the driver's steering to help prevent the vehicle from departing the lane.

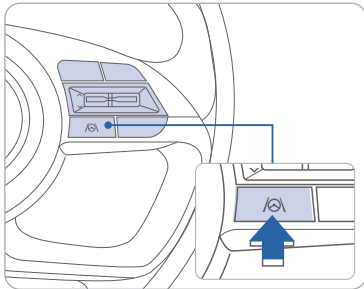
With the engine on, press and hold the Lane Driving Assist (LKA) button located on the steering wheel to turn on Lane Keeping Assist. The grey (LKA) indicator light will illuminate on the cluster. Press and hold the button again to turn off the system.



LKAS operates only when the vehicle speed is above 40 mph and when the LKAS indicator is green displayed in the instrument cluster. LKAS will not operate properly if the lane line is not clear, sharp bend in the road, or in heavy fog. Refer to the Owner's Manual for more detailed information.

**NOTE:** LKA Settings can be adjusted between warning only and Active Assist in the User Settings page of the instrument cluster or AVN Screen under Driving Assist.

## LANE FOLLOWING ASSIST (LFA)



Lane Following Assist detects lane markers on the road using the front view camera mounted on the front windshield. LFA helps to assist the driver steering to help keep the vehicle centered in the lane.

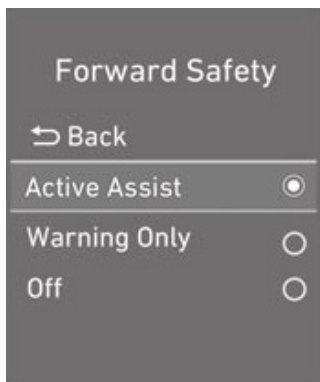
To enable LFA while driving, press the Lane Driving Assist button on the steering wheel.

### Operating conditions

When LFA is activated, the indicator (🚦) on the cluster will illuminate. The color of the indicator will change depending on the condition of LFA .

- Green: When LFA assist the steering
- White: When LFA can not assist the steering

## FORWARD COLLISION-AVOIDANCE ASSIST (FCA)



Forward Collision-Avoidance Assist is designed to help detect and monitor the vehicle ahead or help detect a pedestrian or cyclist in the roadway and warn the driver that a collision is imminent with a warning message and an audible warning, and if necessary, apply emergency braking.

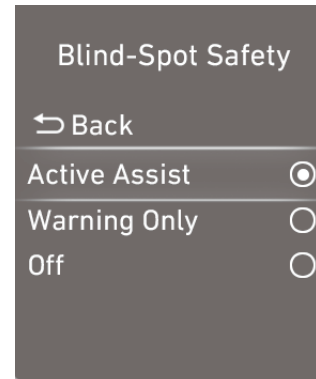
To operate FCA, select the Forward Safety sub menu under User Settings in the LCD cluster or infotainment system. Please refer to your Owner's Manual for further information.

**Active Assist:** FCA will warn the driver with a warning message and an audible warning depending on the collision risk levels. Braking assist will be applied depending on the collision risk.

**Warning Only:** FCA will warn the driver with a warning message and an audible warning depending on the collision risk levels. Braking will not be assisted.

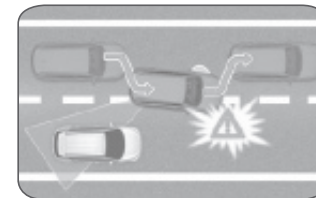
**Off:** FCA will turn off. The warning light will illuminate on the cluster.

## BLIND-SPOT COLLISION-AVOIDANCE ASSIST (BCA)

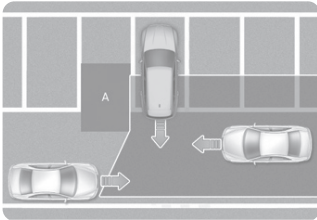
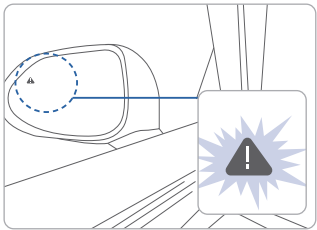


Blind-Spot Collision-Avoidance Assist (BCA) system is designed to help detect and monitor approaching vehicles in the driver's blind spot area and warn the driver of a possible collision with a warning message and audible warning. In addition, if there is a risk of collision when changing lanes or driving forward out of a parking space, the system will help avoid a collision by applying the brake.

BCA Settings can be adjusted between warning only and Active Assist in the User Settings page of the instrument cluster or AVN Screen under Driving Assist.



## REAR CROSS-TRAFFIC COLLISION-AVOIDANCE ASSIST (RCCA)



The RCCA system uses radar sensors to monitor approaching vehicles to the left and right while your vehicle is in reverse. If the risk of collision is detected while the RCCW is generated, brake is controlled. The warning light on the side view mirror will blink and a warning will appear on the instrument cluster of brake control. At the same time, an audible warning will sound. If Rear View Monitor is operating, a warning will also appear on the infotainment system screen.

### Activate/Deactivate

Select the following items on the instrument cluster in order:

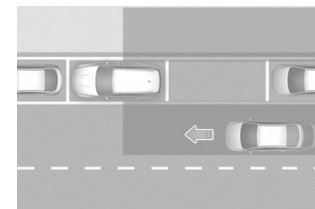
1. Select User Settings
2. Select Driver Assistance
3. Select Blind Spot Safety
4. Select Rear Cross Traffic Safety

### Warning Volume

With the engine on, select 'Driver Assistance → Warning Volume' from the Settings menu to change the Warning Volume to 'High', 'Medium' or 'Low' for LKA, BCA and LFA systems.

## SAFE EXIT WARNING (SEW)

The Safe Exit Assist system helps prevent passengers from opening the door when a vehicle is approaching from the rear area. When an approaching vehicle from the rear is detected at the moment a door is opened, the 'Watch for traffic' warning message will appear on the cluster, and an audible warning will sound.



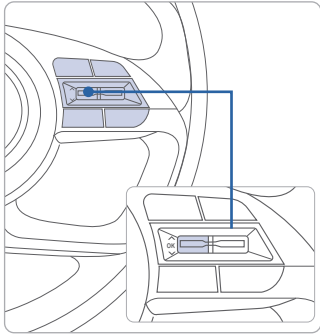
When an approaching vehicle from the rear is detected and the door is already opened, a "watch for traffic" warning message appears and a warning sound will go off.

### Activate/Deactivate

Select the following items on the instrument cluster in order:

1. Select user settings mode in the cluster LCD display
2. Select Driver Assistance
3. Select Blind-Spot Safety
4. Select Safe Exit Assistance

## REAR OCCUPANT ALERT (ROA)



The Rear Occupant Alert system helps prevent exiting the vehicle with the rear passengers left in the vehicle.

### 1st Alert

When you open the front door after opening and closing the rear door and the engine is off, a “check rear seats” warning message appears.

### Activate/Deactivate

Select the following items on the instrument cluster in order:

1. Select User Settings on the cluster LCD display
2. Select Convenience
3. Select Rear Seat Alert



**NOTE:** The overhead sensor is located above the rear passenger seats.

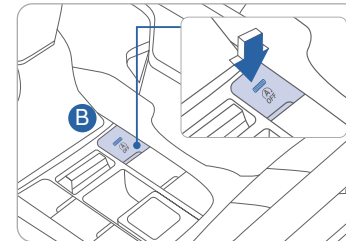
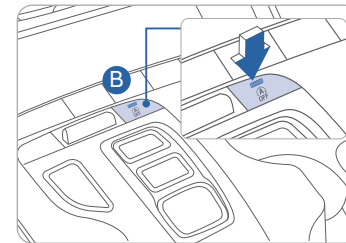
## IDLE STOP AND GO (ISG)



The ISG system will automatically shut off the engine when the vehicle is at a standstill (i.e. red stop light, stop sign, and traffic jam) to increase vehicle’s fuel economy. The auto stop indicator **A** will illuminate in Green on the instrument cluster when activated. To restart the engine in auto stop mode, release the brake pedal and press on the accelerator. The auto stop indicator goes OFF on the instrument cluster once the engine is restarted.

### Prerequisite for activation:

- The driver’s seatbelt is fastened.
- The driver’s door and the hood are closed.
- The brake vacuum pressure is adequate.
- The battery is sufficiently charged.
- The outside temperature is between 14°F and 95°F (-10°C and 35°C).
- The engine coolant temperature is not too low.
- The system is not in the diagnostic mode.



**NOTE:** The engine will not shut off if the prerequisites are not satisfied. In that case, the Auto Stop indicator will illuminate in yellow on the instrument cluster.

### To deactivate

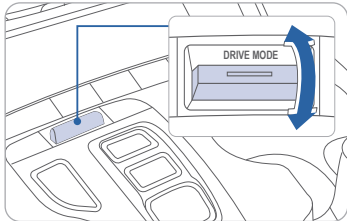
Press the ISG OFF **B** button, indicator illuminates.

### To activate

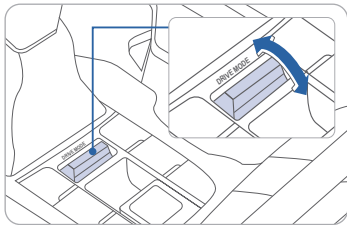
Press the ISG OFF **B** button, indicator turns OFF.

**NOTE:** If ISG is deactivated, it will be turned on again with key cycle.

## DRIVE MODE



The mode changes, as below, whenever the DRIVE MODE button is pressed. An indicator will illuminate on the instrument cluster when the vehicle is in sport mode or smart mode. When the vehicle is in comfort mode, it is not displayed on the instrument cluster.



### NORMAL mode:

Normal mode provides smooth driving and comfortable riding.

### SPORT mode:

Sport mode manages the driving dynamics by automatically adjusting the steering effort, and the engine and transmission control logic for enhanced driving performance. When sport mode is activated, the engine RPM will be a little higher than normal.

### SMART mode:

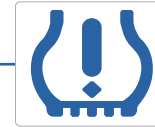
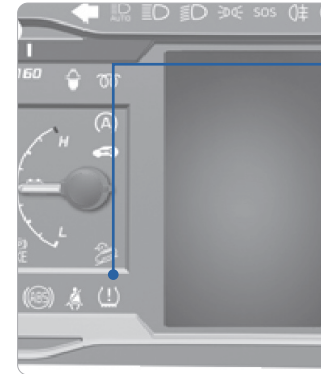
Smart mode selects the proper driving mode between comfort and sport by judging the driver's driving habits.

### SNOW mode:

In Snow mode, the engine's driving power is properly distributed to the wheels, to help start the vehicle stably on slippery roads or keep tires from slipping. Use this mode when driving on slippery roads.

**NOTE:** Whenever the engine is restarted, the drive mode will revert back to the default comfort mode

## TIRE PRESSURE MONITORING SYSTEM (TPMS)



Low Tire Pressure Indicator / TPMS Malfunction Indicator



Low Tire Pressure / Tire Pressure Monitor / TPMS Malfunction Display (shown on the cluster LCD display)

### LOW TIRE PRESSURE INDICATOR



Illuminates if one or more of your tires are significantly under-inflated.

### TPMS MALFUNCTION INDICATOR

Blinks for approximately one minute, then remains illuminated when there is a malfunction with the TPMS. Inspect all tires and adjust the tire pressure to specification. If the lamp remains illuminated, we recommend the vehicle be checked by an authorized HYUNDAI dealer.

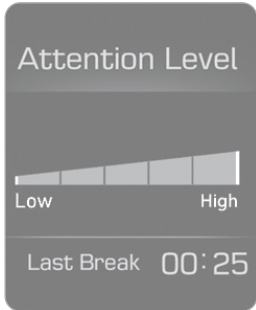
### LOW TIRE PRESSURE / TIRE PRESSURE MONITOR / TPMS MALFUNCTION DISPLAY(LCD DISPLAY)

Select the Driving Assist mode  by pressing the mode button on the steering wheel to display tire pressure.

Tire pressures will display after driving a short distance. If a tire pressure drops lower than predetermined specification, the Low Tire Pressure Indicator  will illuminate and the cluster  display will indicate tire(s) requiring air.

**NOTE:** Environmental factors can affect the tire pressure. The two main environmental factors are ambient air temperature and elevation. Colder ambient air will reduce tire pressure, while hotter ambient air will increase tire pressure. High elevation may also increase tire pressure.

## DRIVER ATTENTION WARNING SYSTEM



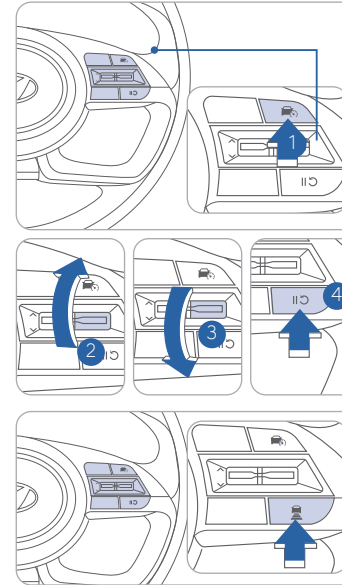
The Driver Attention Warning system displays a bar graph that is intended to represent the driver's attention and fatigue level while driving.

To turn ON the Driver Attention Warning system, turn on the engine, and then select 'User Settings → Driving Assist → Driver Attention Warning → Normal / Early' on the LCD Display.

The Driver Attention Warning system is enabled at vehicle speeds above 40 mph. The system automatically resets when the driver turns the engine OFF.

For more detailed information on any of these topics, please refer to Section 5 of the Owner's Manual.

## SMART CRUISE CONTROL (SCC)



Smart Cruise Control allows you to program the vehicle to maintain a constant speed without holding the accelerator pedal, while maintaining a consistent distance with the vehicle ahead.

- 1 To turn On/Off Smart Cruise Control.
- 2 Toggle switch UP to Set or Increase the cruise control speed.
- 3 Toggle switch DOWN to Set or Decrease the cruise control speed.
- 4 To Pause or resume Smart Cruise Control.

### Setting Vehicle Distance

SCC assist you in setting the distance from the vehicle ahead and will maintain the selected distance without you depressing the accelerator or the brake pedal.



Press the Vehicle distance button to set and maintain the vehicle distance without pressing the accelerator or brake pedal.

The vehicle distance will automatically activate previous setting value when you activate SCC.

Each time the button is pressed, the vehicle distance changes as follows:



### Adjusting the vehicle speed

1. Push the + switch 2 UP to increase cruising speed.
2. Push the - switch 3 DOWN to decrease cruising speed.

**NOTE:** Quick toggle up/down will change speed by 1 mph. Holding switch up/down will change speed by 5 mph.

### To Cancel Cruise Control/Smart Cruise Control

Press the Driving Assist button 1 or depress the brake pedal.

Please refer to your Owner's Manual for more information.

## LEADING VEHICLE DEPARTURE ALERT

The Leading Vehicle Departure Alert function alerts the driver of the departure of the vehicle in front when the vehicle is stopped.

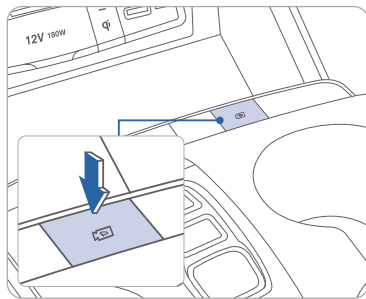
### To activate

Select the following items on the instrument cluster in order:

1. Select User Settings on LCD display or infotainment system.
2. Select Driver Assistance
3. Select Driver Attention Warning
4. Select "Leading Vehicle Departure Alert"

The function stops operation when the setting is deactivated. However, if the engine is turned off then on again, the function maintains in the previous state.

## SURROUND VIEW MONITOR (SVM)

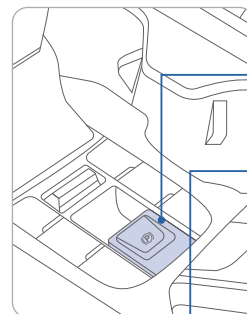


Surround View Monitor can help assist in parking using the cameras installed on the vehicle and displays images around the vehicle through the infotainment system screen.

- Parking Assist View function helps the driver to see the surroundings of the vehicle in a parking situation in various view modes.



## ELECTRIC PARKING BRAKE (EPB)



### Applying



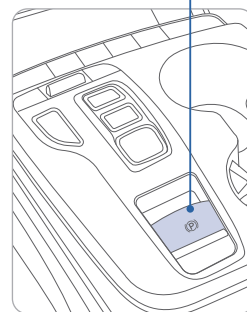
Stop the vehicle then pull the EPB switch.



### Releasing



Press the EPB switch while depressing the brake pedal.



The EPB will automatically be applied when:

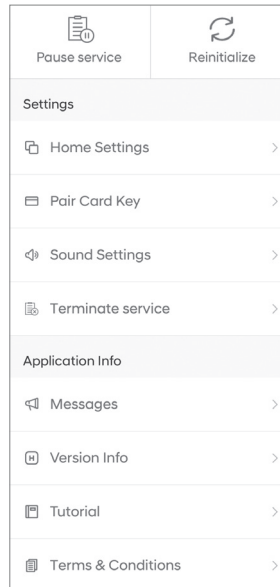
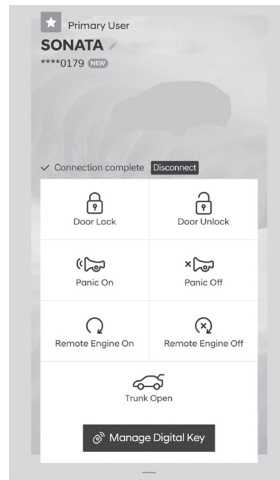
- Shift to park on a slope
- Engine off while Auto Hold is enabled
- When the vehicle moves a bit in park
- Condition below while Auto Hold is activated
  - \* Driver's door open/hood open/trunk(tailgate) open
  - \* Vehicle stops for more than 10minutes, stands on a steep slope

To release the automatic EPB:

1. Ensure seatbelts are fastened and the doors, hood and trunk are closed
2. With engine running, depress the brake pedal and shift into R(Reverse) or D(Drive) and then depress accelerator pedal.

**NOTE:** Please see the owner's manual for additional details not written

## DIGITAL KEY PAIRING (if equipped)



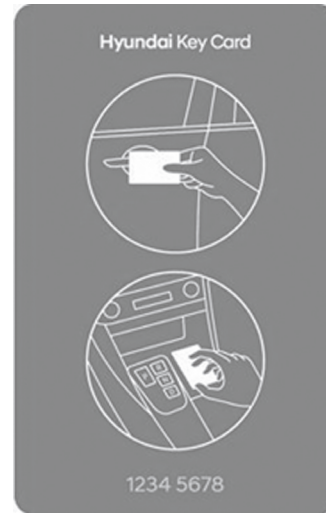
Hyundai Digital Key allows drivers to start the engine of their car using a smartphone app and Near-Field Communication (NFC). Hyundai Digital Key provides many of the same functions as your physical key. To pair your smartphone, complete the following steps:

1. Login to the Hyundai Digital Key Application using your MyHyundai username and password
2. Start the vehicle with the proximity key
3. Pair the phone to the vehicle as follows:
  - Navigation Vehicles: Settings → Vehicle → Digital Key → Smartphone Key → Save
  - Display Audio: Instrument Cluster User Settings Mode → Digital Key → Smartphone Key → Save
4. Open the Hyundai Digital Key Application on the primary user's smartphone. Select the + Icon on the main screen of the smartphone app.
5. Place the smartphone on the Wireless Phone Charger in the vehicle and the process will begin automatically
6. Once the screen in the vehicle says saved, your Digital Key is ready to use.

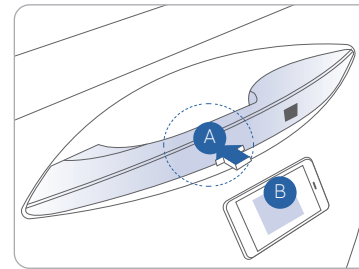
**NOTE:** This application is only available for Android users.

If the NFC card is lost or stolen, please contact your local Hyundai dealer for replacement.

## NEAR FIELD COMMUNICATION (NFC)



**Pair Card Key authentication**  
 Authenticate using NFC  
 Authenticate using BLE



To lock/unlock your vehicle using the NFC key card, hold the key card up to the center of the door handle **A**.

If you try to lock your vehicle with the NFC card under the following conditions, it will not work:

- The Smart Key is in the vehicle.
- The POWER button is in ACC or ON position.
- Any of the doors, hood and trunk are open.

**NOTE:** If you overlap and use the key card with other NFC-enabled cards such as a transportation card or credit card, it will not work.

\*For security reasons, the vehicle can only have one NFC key card paired to it at one time. Any time that a new Key card is paired to the car it will disable the previously paired Key Card .

## TUCSON CUSTOMER DELIVERY CHECKLIST

HYUNDAI OWNER	DEALERSHIP NAME
SALES CONSULTANT	DATE
VIN	PREVIOUS VEHICLE

### BEFORE DELIVERY

- SET TIRE PRESSURE LF\_\_\_ RF\_\_\_ RR\_\_\_ LR\_\_\_
- VERIFY VEHICLE IS CLEAN, IN GOOD CONDITION, FREE OF CHIPS AND SCRATCHES · CLEAN WINDSHIELD AND BACK WINDOW
- ENSURE FLOORMATS ARE SNAPPED INTO PLACE

BLUETOOTH® HANDS-FREE HYUNDAI

### CONNECTING YOUR PHONE

**On the radio:**

1. Push the **SETUP** button.
2. Select **Bluetooth**.
3. Select **Bluetooth Connection**.
4. Select **Add New**.

**In your phone's Bluetooth settings:**

5. Select the <Vehicle Name> on your phone.
6. Enter the passkey from the radio or accept the authorization pop-up on your phone.

### SWITCHING BETWEEN PAIRED PHONES

**Using Voice Command:**  
 "Change Bluetooth device"

**On the radio:**

1. Push the **SETUP** button.
2. Select **Bluetooth**.
3. Select **Bluetooth Connection**.
4. Select **Connect** next to the desired phone.

For more information, visit [HyundaiBluetooth.com](http://HyundaiBluetooth.com)