

# Parrot®

## BEBOP-PRO 3D MODELING

ALL-IN-ONE DRONE SOLUTION  
FOR 3D MODELING



PHOTO & VIDEO  
FULL HD 1080P - 14MPX  
3-AXIS STABILIZATION

AUGMENTED POWER  
30MIN FLIGHT TIME  
32GB INTERNAL MEMORY

INCLUDES  
3D MODELING  
SOFTWARE

SAFE  
EASY TO PILOT  
AUTO. RETURN HOME

VIEW & SHARE  
3D MODELS ON DEVICES  
& ON THE CLOUD

3D MODELING  
AUTOMATIC  
3D RECONSTRUCTION



ONE YEAR  
LICENCE\*

# OVERVIEW

## PARROT BEBOP-PRO 3D MODELING: THE MULTI-PURPOSE FIELD TOOL FOR BUILDING PROFESSIONALS

### Measure

Parrot Bebop-Pro 3D Modeling enables construction and real estate professionals to quickly assess the house status, to estimate the work to be done and to share and promote to their customers and partners.

### Inspect

Parrot Bebop-Pro 3D Modeling makes possible quick properties inspections thanks to live video streaming and photo capture

### Promote

Parrot Bebop-Pro 3D Modeling allows architects, construction craftsmen and real estate agencies to easily create photorealistic 3D models, videos and photos of houses and properties from the Parrot Bebop 2 drone images.

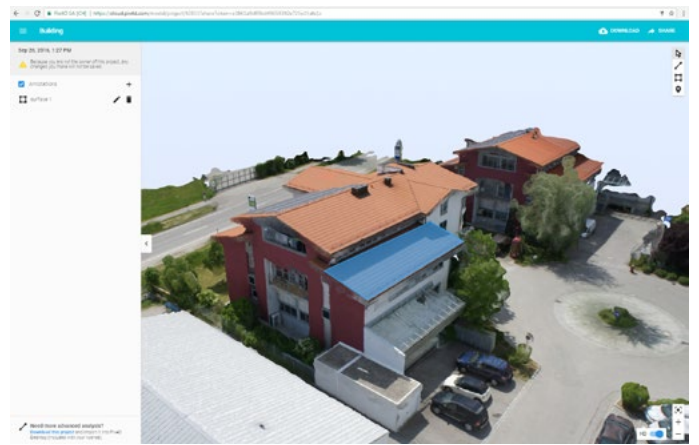
## VISUAL INSPECTION

- A quick and easy access to visual inspection of buildings or properties (roofs, walls, windows, ...)
- Live video streaming to identify quickly damages
- Photo capture to illustrate project reports



## 3D MODELING

- Take measurements in minutes to easily estimate the scope of works to be done and to quickly define quotations
- Show and promote your property in 3D
- Start drafting your project proposal in your architecture software



This solution is a combination of the easy to use and reliable consumer proven drone Parrot Bebop 2 and the advanced 3D reconstruction software Pix4Dmodel from Pix4D.



### FLY

Fly safe and easily the Parrot Bebop 2



### CAPTURE

Parrot Bebop 2 will automatically fly and capture the necessary pictures thanks to Pix4Dcapture



### PROCESS

Process the captured data to create a 3D model with the advanced 3D modeling software: Pix4Dmodel



# THE COMPACT DRONE YOU CAN TAKE ANYWHERE

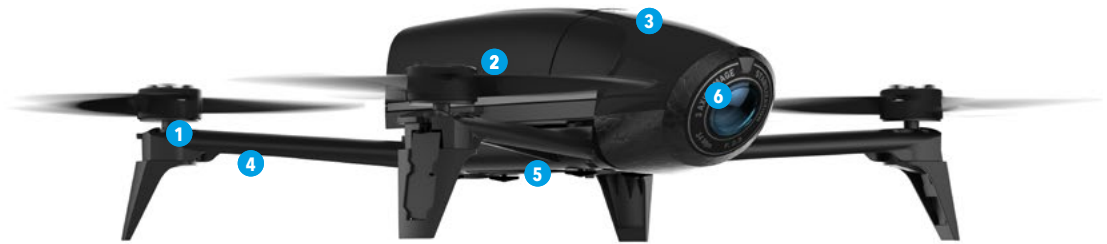
## FAST, AGILE AND LIGHTWEIGHT CAMERA DRONE FOR EVERYDAY

**Parrot Bebop 2 is a compact and robust camera drone in the 500g category with 30 minutes of flight time**

Shoot full HD videos and aerial photos like a professional enabled by RAW format and 14Mpx wide-angle camera. Unmatched 3-axis digital stabilization system ensuring smooth and stable videos regardless of the drone's movements.

### Safe and easy to pilot :

Parrot Bebop 2 has numerous safety systems, you can fly with complete peace of mind  
Parrot Bebop 2 uses 7 sensors simultaneously to ensure maximum stability of flight



- 1. Highspeed engines with 6" propellers - 2. High capacity 3500mAh battery
- 3. CPU Dual core with GPU quad-core GPS, altimeter, magnetometer, 3-axis Inertial measurement unit
- 4. Reinforced central cross - 5. Ground sensors: Optical flow camera, ultrasound sensor
- 6. Full HD 1080p wide-angle camera

**Parrot Skycontroller 2 is the long-range compact controller to enjoy your flights with precise piloting controls:**

- Accurate control for better flights with two precise joysticks
- Customizable controls with 8 shortcut buttons and 2 joysticks
- Extended range of up to 1.2 miles (2km) without obstacles and interferences
- Compact design for easy transport
- Live video streaming on your tablet with USB link and removable holder



### FreeFlight Pro, the dedicated app for Parrot drones:

- Dedicated app with easy pairing for your drones
- New intuitive design with better look & feel and advanced settings
- Access live video streaming, Flight Recorder gallery, Drone Academy, updates and more

Use **FlightPlan** (in-app purchase) to create autonomous flight path by positioning waypoints on your smartphone screen and then let your drone do the rest.



FreeFlight Pro



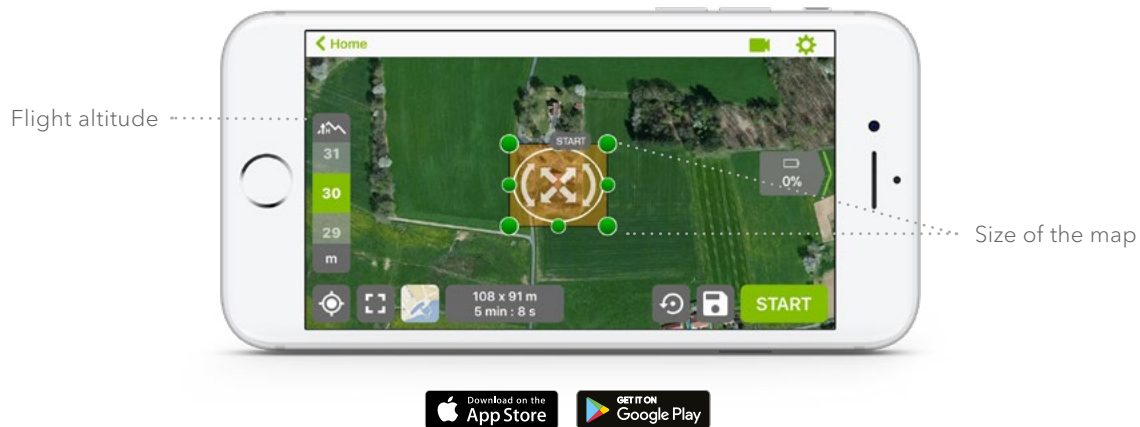
# CAPTURE

## CAPTURE WITH PIX4DCAPTURE FOR 3D MODELING

No need to be an experienced pilot. Pix4Dcapture is the perfect tool to automatically capture image data for optimal 3D models.

### Pix4Dcapture features include:

- Circular Mission for point-of-interest 3D model reconstructions
- Polygon and Grid Mission for general mapping<sup>(1)</sup>
- Double Grid Mission for better 3D models reconstruction<sup>(1)</sup>
- Free Flight Mission for vertical object mapping with manual flight control<sup>(2)</sup>



The Parrot Bebop 2 will automatically fly around the targeted property and take relevant photos all along the flight path



Photos are automatically taken at precise locations on the flight path to ensure a proper 3D modeling of the property. Once finished the Parrot Bebop 2 will automatically come back to its start point and land safely. Pictures are transferred on the smartphone and the app propose to upload them on Pix4Dcloud.

(1) only on iOS  
(2) only on Android

# PROCESS

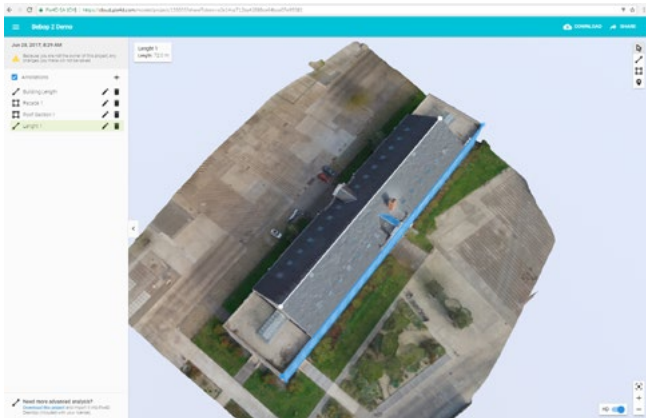
## PROCESS WITH PIX4DMODEL



With the pictures of the Parrot Bebop-Pro 3D Modeling transferred on the cloud, Pix4Dmodel processes the data collected to turns those images into 3D model. Advanced featured are available:

- Annotate the 3D model
- Take measurements easily:

length



surfaces



- Download project on desktop for advanced editing
- Edit processing settings for different resolutions (custom resolution, density of point cloud...)\*
- Export 3D files for architecture and animation software

- Share and promote with a simple URL on other websites
- Create 3D videos animations\*
- Create 3D printed mock-ups
- Use embeded 3D model on websites\*



\* only available on desktop software



# TECHNICAL SPECIFICATIONS

## PARROT BEBOP 2 POWER 32GB

### GENERAL

- Photo: 14 mega-pixels wide angle
- Video: Full HD 1080p
- Stabilisation: 3-axis digital stabilisation
- Battery life: 30 minutes flying time (with 3350 mAh battery)
- GPS: Yes
- Storage: 32 GB flash storage system
- Weight: 500g
- Range: up to 2km with Parrot Skycontroller 2 in an interference free and unobstructed environment

### CAMERA

- Sensor: CMOS 14 Mpx
- Optical: 180° fish-eye lens: 1/2.3» aperture
- Video stabilizer: 3-axis digital system
- Video resolution: 1920 x 1080p (30fps)
- Photo resolution: 4096 x 3072 pixels
- Video encoding: H264
- Photo format: JPEG, RAW, DNG
- Internal memory: 8 GB Flash

### CONNECTIVITY & PERFORMANCE :

- Wi-Fi 802.11a/b/g/n/ac
- Network: MIMO Dual band
- Wi-Fi Aerials: 2.4 and 5 GHz dual dipole aerials
- Max horizontal speed: 16 m/s
- Max upward speed: 6 m/s

### PACK CONTENT:

- 1 Parrot Bebop 2 Power 32 GB
- 3 Batteries
- 1 Skycontroller 2
- 1 Backpack
- 2 Chargers with 3 country adaptors
- 8 propellers
- 1 propeller mount tool
- 1 Quick Start Guide
- 1 Pix4Dmodel
- 1 year software and cloud license

## PARROT SKYCONTROLLER 2

### GENERAL FEATURES :

- Weight: 500 g
- Dimensions : 200 x 180 x 110 mm
- 2 joysticks
- 8 shortcut buttons
- Li-Po battery: 2700 mAh
- Battery life: 240 minutes
- USB plug
- WiFi MIMO antennas

## PIX4DMODEL LICENCE

- 1 Year software license with desktop and cloud access
- Updates included
- Desktop and cloud access
- Technical assistance not included

